



# GarageBand 3

## Getting Started

Includes a complete tour of the  
GarageBand window, plus step-by-step  
lessons on working with GarageBand

# Contents

<b>Chapter 1</b>	<b>7 Welcome to GarageBand</b>
	8 What's New in GarageBand 3
	9 Before You Begin
	9     What You'll Learn
	9     What You Need
	10 Finding Out More
<b>Chapter 2</b>	<b>11 GarageBand at a Glance</b>
	12 <i>GarageBand Window</i>
	14 Timeline
	16 <i>Editor</i>
	16 For Real Instruments
	17 For Software Instruments—Graphic View
	18 For Software Instruments—Notation View
	19 For Podcasts and Video—Marker View
	20 <i>Loop Browser</i>
	20 Button View
	21 Column View and Podcast Sounds View
	22 <i>Track Info Pane</i>
	22 Real and Software Instrument Tracks
	24 Master Track
	26 <i>Media Browser</i>
<b>Chapter 3</b>	<b>27 Working With Projects</b>
	27 Creating a Project
	28 Setting the Tempo
	29 Setting the Key
	29 Setting the Time Signature
	29 Opening an Existing Project
	30 Saving a Project
	31 Sending a Project to iTunes

<b>Chapter 4</b>	<b>32 Using Apple Loops</b>
	33 Finding Loops With the Loop Browser
	33 Finding Loops in Column View
	34 Finding Loops in Button View
	34 Finding Loops in Podcast Sounds View
	35 Previewing Loops in the Loop Browser
	35 Refining Your Searches
	36 Displaying Loops From a Jam Pack or Folder
	36 Searching by Scale Type
	36 Limiting Searches to Nearby Keys
	37 Searching for Specific Text
	37 Adding Loops to the Timeline
	38 Creating Your Own Apple Loops
	39 Adding Loops to the Loop Library
<b>Chapter 5</b>	<b>40 Working in the Timeline</b>
	40 About Regions
	41 Selecting Regions
	41 Cutting, Copying, and Pasting Regions
	42 Looping Regions
	42 Resizing Regions
	43 Moving Regions
	43 Transposing Regions
	44 Splitting Regions
	44 Joining Regions
	44 Fixing the Timing of Software Instrument Regions
	45 Setting Real Instrument Regions to Keep Their Original Tempo
	45 Renaming Regions
	45 Using the Grid
	46 Using Undo and Redo
<b>Chapter 6</b>	<b>47 Working With Real Instruments</b>
	47 Adding a Real Instrument Track
	48 Monitoring Real Instrument Input
	48 Getting Ready to Record
	49 Recording a Real Instrument
	50 Recording a Real Instrument With the Cycle Region
	51 Recording Multiple Real Instrument Tracks
	51 Changing Real Instrument Settings
	51 Changing the Instrument

	52	Changing the Input Channel
	53	Adjusting Input Volume
	53	Using the Instrument Tuner
	54	Adding an Audio File From the Finder
<b>Chapter 7</b>	<b>55</b>	<b>Working With Software Instruments</b>
	55	Using Musical Typing
	56	Using the Onscreen Music Keyboard
	57	Adding a Software Instrument Track
	57	Getting Ready to Record
	58	Recording a Software Instrument
	58	Recording a Software Instrument With the Cycle Region
	59	Changing Software Instrument Settings
<b>Chapter 8</b>	<b>60</b>	<b>Working in the Editor</b>
	60	Selecting Regions
	61	Editing Real Instrument Regions
	61	Moving Real Instrument Regions
	61	Cropping Part of a Real Instrument Region
	62	Joining Real Instrument Regions
	62	Enhancing the Tuning of Real Instrument Tracks
	62	Enhancing the Timing of Real Instrument Tracks
	63	Editing Software Instrument Regions
	63	Editing Notes in a Software Instrument Region
	64	Editing Controller Information in a Software Instrument Region
<b>Chapter 9</b>	<b>66</b>	<b>Working in Notation View</b>
	66	About Notation View
	68	Editing Notes in Notation View
	69	Adding Notes
	69	Selecting Notes
	69	Moving Notes
	69	Copying Notes
	70	Changing the Pitch of Notes
	70	Changing the Duration of Notes
	70	Deleting Notes
	70	Changing Note Velocity
	70	Adding Pedal Down and Pedal Up Symbols
<b>Chapter 10</b>	<b>72</b>	<b>Mixing and Adding Effects</b>
	72	What Is Mixing?
	73	Setting Track Volume Levels
	73	Setting Track Pan Position

- 73 Using Volume and Pan Curves
- 74 Setting the Output Volume
- 75 Adding Fade Ins and Fade Outs
- 75 Transposing Part of a Project to a Different Key
- 76 Using Effects
  - 76 Types of Effects
  - 77 Adding Effects
  - 78 Adjusting Effects
  - 78 Turning Effects On and Off
  - 78 Choosing Effect Presets
  - 79 Editing Effect Presets
  - 79 Saving Effect Presets

## Chapter 11

- 80 **Creating Podcasts in GarageBand**
- 81 Creating a Podcast Episode
  - 81 Creating the Podcast Audio
  - 83 Ducking Backing Tracks
  - 83 Adding and Editing Markers
  - 84 Adding Marker Region Artwork
  - 85 Adding a URL to a Marker
  - 85 Adding Chapter Titles
  - 85 Deleting Markers
  - 86 Adding Episode Artwork
  - 86 Editing Artwork
  - 86 Editing Episode Information
- 87 Creating a Video Podcast Episode
- 87 Sending a Podcast to iWeb
- 87 Exporting a Podcast Episode

## Chapter 12

- 88 **Creating a Musical Score for an iMovie or Video**
- 88 Sending an iMovie Project to GarageBand
- 89 Importing a Video File From the Media Browser
- 90 Viewing the Video
- 90 Working With the Video's Audio Track
- 90 Adding and Editing Markers
  - 91 Adding a URL to a Marker
  - 91 Adding a Chapter Title
- 91 Sending a Movie to iDVD
- 92 Sending a Video Podcast to iWeb
- 92 Exporting a Project as a QuickTime Movie

<b>Appendix A</b>	<b>93</b>	<b>Keyboard Shortcuts</b>
<b>Appendix B</b>	<b>96</b>	<b>Connecting Music Equipment to Your Computer</b>
	96	Connecting a Musical Instrument or Microphone
	97	Connecting a Music Keyboard to Your Computer

This document gives you useful information and step-by-step instructions for creating projects with GarageBand.

The following chapters give you a tour of the GarageBand windows and a series of lessons to help you create your own music projects. The chapters in GarageBand Getting Started cover the following topics:

- “GarageBand at a Glance” provides a tour of the windows and controls in GarageBand.
- “Working With Projects” describes how to create a new project, as well as how to save, archive, and export your projects.
- “Using Apple Loops” describes how to find and preview Apple Loops in the loop browser, add them to the timeline, and create your own Apple Loops.
- “Working in the Timeline” describes how to build your project by arranging regions in the timeline.
- “Working With Real Instruments” describes how to add a Real Instrument track, turn on monitoring, set the input channel and format, record a Real Instrument, and change Real Instrument settings.
- “Working With Software Instruments” describes how to add a Software Instrument track, record a Software Instrument, and change Software Instrument settings.
- “Working in the Editor” describes the different ways you can edit Real and Software Instrument regions.
- “Working in Notation View” describes how to view Software Instrument regions as music notation, and how to edit notes, note velocity, and pedal markings in notation view.
- “Mixing and Adding Effects” describes the steps to follow in mixing your project, and how to use the effects included with GarageBand.
- “Creating Podcasts in GarageBand” describes how to create audio and video podcast episodes and send them to iWeb or export them.

- “Creating a Musical Score for an iMovie or Video” describes how to import a video file into a project, view the video, edit the video’s audio, add markers, URLs, and chapter titles, and send the finished movie to iDVD or to iWeb, or export it as a QuickTime movie.

GarageBand Getting Started also includes appendixes listing keyboard shortcuts and describing how to connect music equipment to your computer.

## What’s New in GarageBand 3

GarageBand 3 includes the following new features and enhancements:

- Using the Media Browser, you can find and preview photos from your iPhoto library, songs from your iTunes library, and iMovie projects from your Movies folder, then import them into a project. You can also import other GarageBand projects saved with an iLife preview into a project.
- You can create podcasts in GarageBand, including enhanced podcasts and video podcasts. You can view your podcast in the podcast preview pane as you record and mix the audio. You can also add and edit markers, which can include artwork, URLs, and chapter titles. When you finish creating your podcast episode, you can send it to iWeb to publish on the Internet, or export it and publish it using another application.
- You can send an iMovie project to GarageBand, or import a video file, and create a musical score for the video. You can view the video as you work, edit the video’s audio track, and add markers. When you finish creating your musical score, you can send the project to iDVD, export it as a video podcast, or export it as a QuickTime movie.
- You can record iChat audio and video conferences in a GarageBand project.
- GarageBand includes new Apple Loops designed to be used in podcast episodes. You can add podcast sounds from the loop browser, and use them with the new Sound Effects Software Instrument when you create a podcast.
- The Track Info pane is now integrated into the main GarageBand window. When you show the Track Info pane, it appears on the right side of the timeline, without covering other parts of the main window.
- By default, Real Instrument recordings and loops match the song tempo. Now you can set individual Real Instrument regions to follow their original tempo.
- You can compact a project to reduce the file size for easier sharing.
- GarageBand projects can now be up to 1999 measures long (twice as long as before).



## Before You Begin

To make it easier to follow the lessons as you work, print each lesson before you start.

In many of the tasks shown in this document you need to choose menu commands. In the lessons, and in GarageBand Help, menu commands appear like this:

Choose Edit > Join Selected.

The first term after *Choose* is the name of the menu in the GarageBand menu bar. The term (or terms) following the angle bracket are the items you choose from that menu.

## What You'll Learn

GarageBand lets you be the composer, the bandleader, and the mixing engineer as you create your own original projects. You can create projects by adding Apple Loops, by connecting a musical instrument or microphone to your computer and recording it in a Real Instrument track, by playing the Software Instruments included with GarageBand, or using any combination of these methods. You'll learn how to:

- Create, open, and save projects
- Set project tempo, key, time signature, and length
- Find and preview Apple Loops using the loop browser, then add them to your projects
- Play and record both Real and Software Instruments
- Arrange Real and Software Instrument regions in the timeline, and edit them in the editor
- View and edit Software Instrument regions as music notation
- Send a movie from iMovie so you can create a soundtrack in GarageBand, edit the movie's audio track, add markers, and send the movie to iDVD
- Create an enhanced podcast or enhanced video podcast in GarageBand and send it to iWeb, or export it as a podcast episode

## What You Need

All you need to create music in GarageBand is a Macintosh computer that meets the system requirements, as listed in the Read Me file. Optionally, you can use any of the following equipment to expand your music creation possibilities:

- A microphone to record your voice or any acoustic musical instrument
- Electronic musical instruments, including guitars, basses, and keyboards
- A music keyboard (USB or MIDI) to play and record Software Instruments
- An audio interface to connect musical instruments or microphones
- A pair of speakers or monitors to hear the music you create with greater audio quality

## Finding Out More

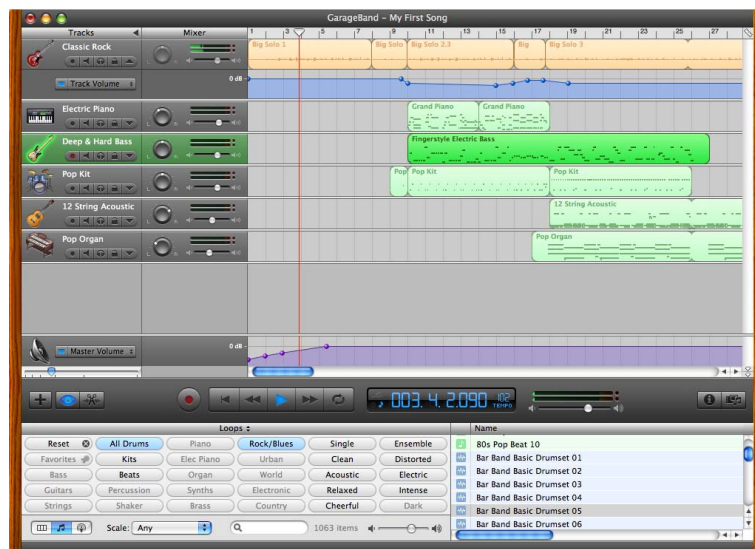
For complete and up-to-date information on GarageBand, including news about new features, user tips, and a list of supported music equipment, go to the GarageBand website at [www.apple.com/ilife/garageband](http://www.apple.com/ilife/garageband).

To get help while you're using GarageBand, look in GarageBand Help, available in the Help menu when GarageBand is open. You'll find more information about the topics covered in this document, as well as information and instructions for many more topics.

For support, go to the GarageBand support site at [www.apple.com/support/garageband](http://www.apple.com/support/garageband).

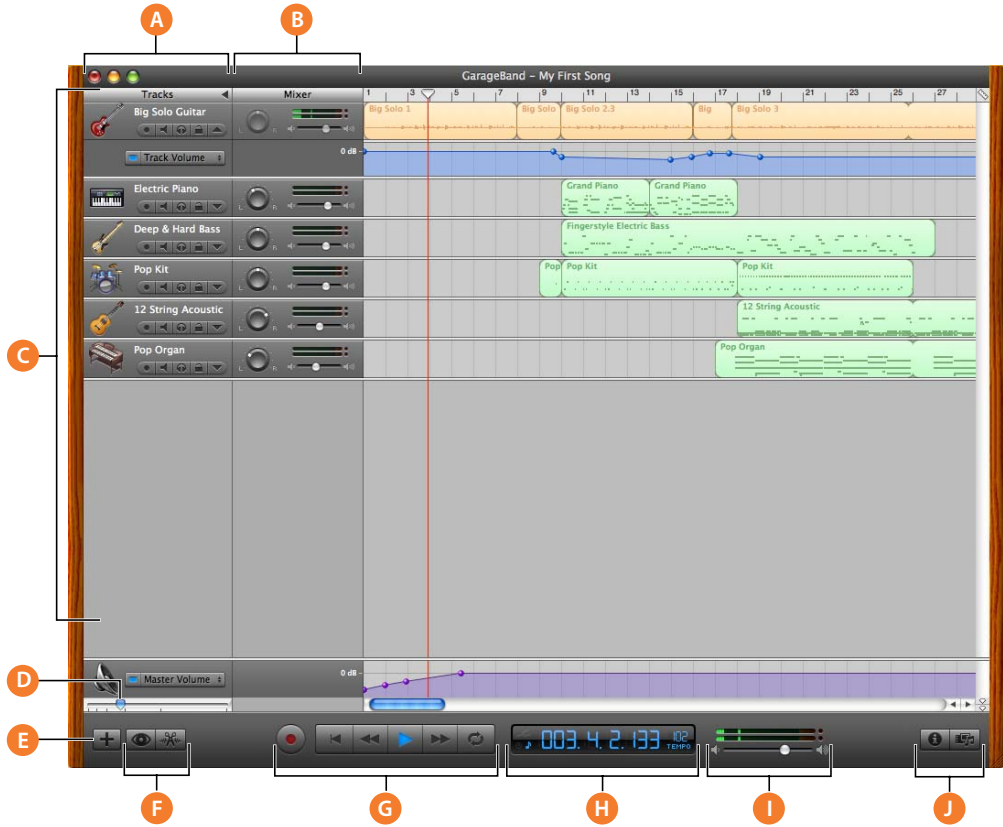
“GarageBand at a Glance” introduces you to the features and controls in the GarageBand windows. You use these controls to create your projects in GarageBand.

Take a look at these pages even if you don’t plan to complete the lessons in GarageBand Getting Started, because knowing the names and functions of the GarageBand controls will make it easier to find answers to your questions in GarageBand Help.



The pages that follow introduce you to the GarageBand window—including the timeline, the loop browser, and the editor—and to the Track Info pane. You record Real and Software Instruments and arrange and mix your projects in the timeline, find and preview loops in the loop browser, and change track instrument, effects, and input settings in the Track Info pane.

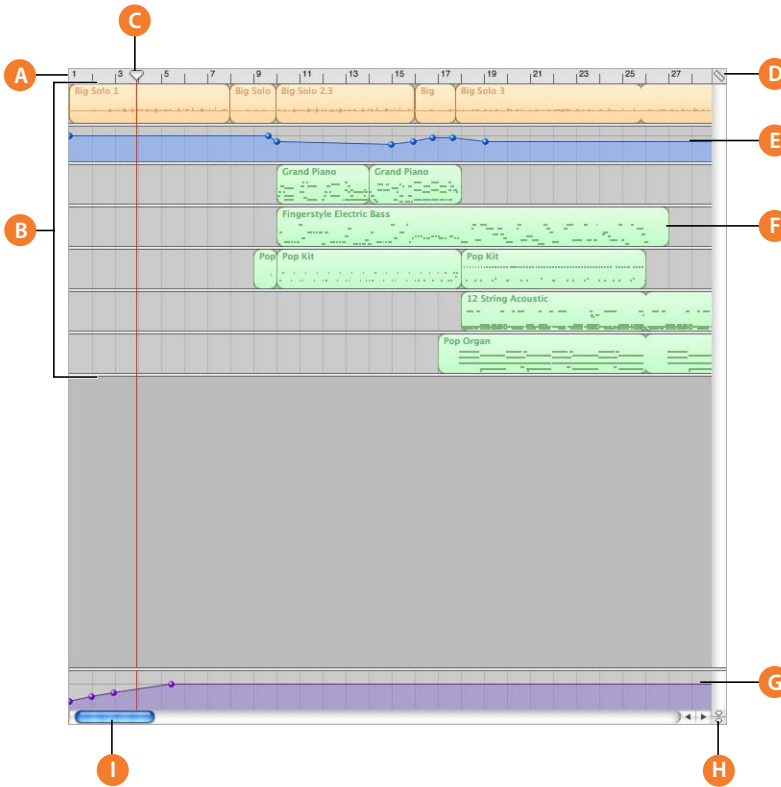
# GarageBand Window



- 
- A Track headers:** The instrument icon and name are shown at the left of each track's header. Click the name to type a new track name. Click the Record Enable button (with the red circle) to turn on the track for recording. Click the Mute button (with the speaker icon) to silence the track. Click the Solo button (with the headphone icon) to hear the track by itself. Click the Lock Track button to lock the track. Click the triangle to show the track's volume curve.
- 
- B Track mixer:** Drag the pan dial to adjust the pan position of the track (the left-to-right placement in the stereo field). Drag the volume slider to adjust the track's volume. Watch the level meters to see the track's volume level as you record and play.
- 
- C Timeline:** Contains the tracks where you record Real and Software Instruments, add loops, and arrange regions. Also includes the beat ruler, which you use to move the playhead and align items in the timeline with beats and measures. See "Timeline" on page 14 for a description of the features and controls in the timeline.
- 
- D Zoom slider:** Drag the zoom slider to zoom in for a closer view of part of the timeline, or to zoom out to see more of the timeline.
- 
- E Add Track button:** Click to add a track below the existing tracks in the timeline.
- 
- F Loop Browser and Editor buttons:** Click to open the loop browser or the editor.
- 
- G Transport controls:** Click the Record button to start recording. Click the Play button to start or stop the project playing. Click the Go to Beginning, Rewind, or Fast Forward buttons to move the playhead to different parts of the project. Click the Cycle button to turn the cycle region on or off.
- 
- H Time display/instrument tuner:** The time display shows the playhead's position in musical time (measures, beats, ticks) or absolute time (hours, minutes, seconds, fractions). Drag or double-click the numerals to enter a new playhead position.
- The right side of the time display shows the project's tempo. Press and hold the tempo, then drag the slider to set a new tempo.
- You can also show the instrument tuner in the time display by clicking the small tuning fork, and use it to check the tuning of a Real Instrument connected to your computer.
- 
- I Master volume slider and level meters:** Drag the volume slider to adjust the project's master output volume level. Watch the level meters to see if clipping is occurring before you export a project.
- 
- J Track Info and Media Browser buttons:** Click to open the Track Info pane or the Media Browser.
-

## Timeline

The timeline contains the tracks where you record Real and Software Instruments, add loops, and arrange regions.



- 
- A Beat ruler:** Shows beats and measures, the units of musical time in the timeline. You can click the beat ruler to move the playhead to a specific point in the timeline.

---

  - B Tracks:** You record Real and Software Instruments in tracks, and drag loops to tracks to add them to a project. You arrange the project by working with regions in the tracks in the timeline.

---

  - C Playhead:** Shows the point in the project currently playing, or the point where playback starts when you click the Play button. Also shows where cut and copied items are pasted in the timeline. You can move the playhead to change what part of the project is playing.

---

  - D Grid button:** Choose a note value for the timeline grid, or choose Automatic to have the value change when you zoom in or out.

---

  - E Volume and pan curves:** Add a volume or pan curve to a track, then add and adjust control points on the volume or pan curve to add dynamic changes to different parts of a project.

---

  - F Regions:** When you record a Real Instrument or Software Instrument, or add a loop, you create a region in the timeline. You can cut, copy, and paste regions, loop and resize them, move and transpose them, and make other changes to build the arrangement of the project.

---

  - G Master track:** You can change the loudness of the overall project by adding a volume curve to the master track. and transpose parts of your project to a different key by adding a pitch curve.

---

  - H Playhead Lock button:** Click to unlock the playheads in the timeline and the editor, so that you can see different parts of the project in the editor and the timeline.

---

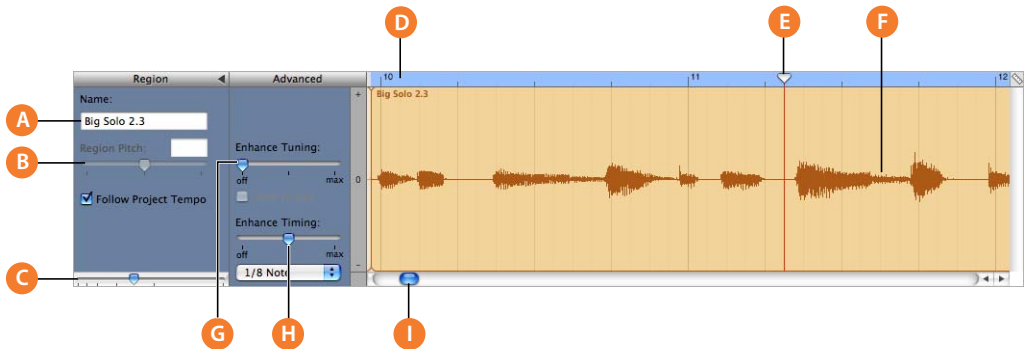
  - I Scroll bars:** Drag the horizontal scroller to move to a different part of a project. Drag the vertical scroller to see tracks not currently visible.
-

## Editor

The editor is like a microscope showing a close-up view of part of a track. You can edit Real and Software Instrument regions in a variety of ways in the editor.

### For Real Instruments

When you select a Real Instrument track, the editor shows the waveform of the track or selected region. You can move, crop, join, transpose, and rename regions in the editor.

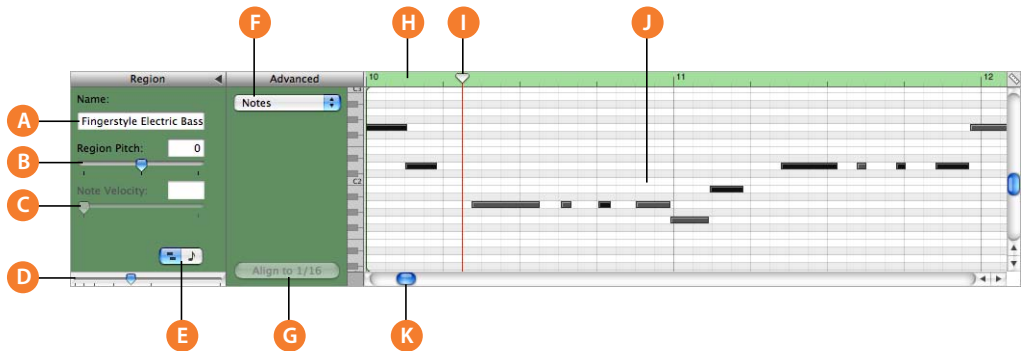


- A Region Name field:** Type a new name for the selected region in the field.
- B Region Pitch slider and field:** Drag the slider to transpose the selected Real Instrument region up or down by up to 12 semitones. You can also type the number of semitones in the field.
- C Zoom slider:** Drag to zoom in for a closer view or to zoom out to see more of the track or selected region. Zooming in the editor is independent of the timeline.
- D Beat ruler:** Shows beats and measures for the area visible in the editor.
- E Playhead:** Shows the point in the project currently playing.
- F Waveform display:** Shows the waveform of the regions in the track.
- G Enhance Tuning slider and checkbox:** Drag right to increase the amount of tuning enhancement, or drag left to lower the amount. The limit to key checkbox limits tuning enhancement to the project's key.
- H Enhance Timing slider and pop-up menu:** Drag right to increase the amount of timing enhancement, or drag left to lower the amount. Choose the note value to use and the basis for timing enhancement from the pop-up menu.
- I Scroll bar:** Drag the scroller to move to a different part of the track.



## For Software Instruments—Graphic View

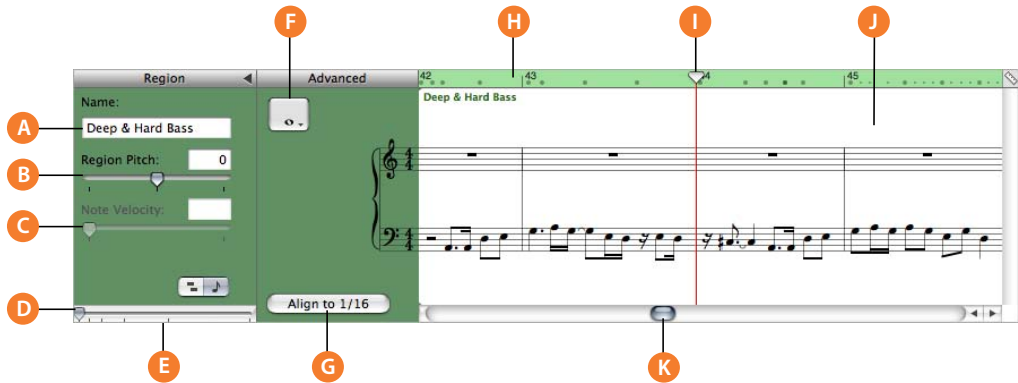
When you select a Software Instrument track, the editor shows a graphic display of the track or selected region. You can edit individual notes in Software Instrument regions, fix the timing of notes, and transpose and rename regions. You can also show and edit controller data for pitch bend, a modulation wheel, or a sustain pedal, recorded when you play your music keyboard.



- A Region Name field:** Type a new name for the selected region in the field.
- B Region Pitch slider and field:** Drag the slider to transpose the selected Software Instrument region up or down by up to 36 semitones. You can also type the number of semitones in the field.
- C Velocity slider and field:** Drag the slider to change the velocity of selected notes. You can also type the velocity value in the field. A note's velocity reflects how hard the key is pressed when you play the note.
- D Zoom slider:** Drag to zoom in for a closer view or to zoom out to see more of the track.
- E Graphic/Notation View buttons:** Click to change the editor to graphic view or notation view.
- F Display pop-up menu:** Choose whether to show notes or controller data in the editor.
- G Fix Timing button:** Click to fix the timing of notes in the selected region, or notes selected in the editor, so that notes move to the nearest grid position.
- H Beat ruler:** Shows beats and measures for the area visible in the editor.
- I Playhead:** Shows the point in the project currently playing.
- J Notes/controller data display:** Shows the individual notes of Software Instrument regions in a graphic format. You can move and resize notes to adjust their pitch, where they start playing, and how long they play. Shows controller data when chosen in the Display pop-up menu.
- K Scroll bar:** Drag the scroller to move to a different part of a track.

## For Software Instruments—Notation View

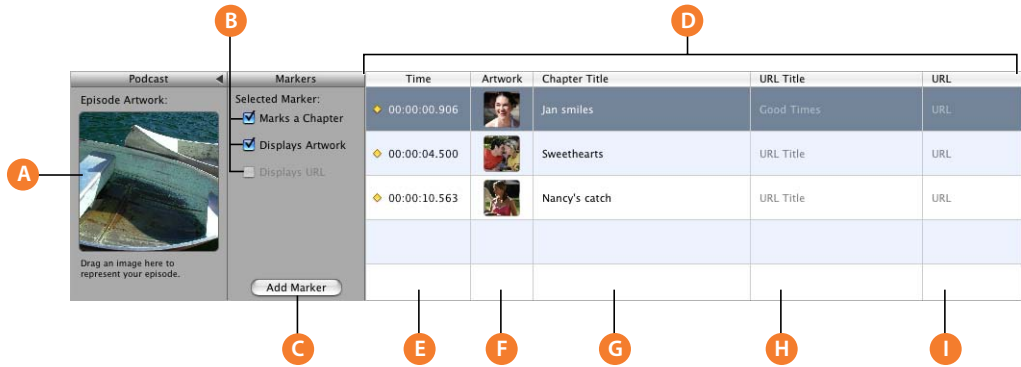
You can also view Software Instrument tracks and regions in notation view. In notation view, notes and other musical events are shown in standard music notation. You can edit notes and edit controller information (including velocity and pedal markings for sustain) in notation view.



- A Region Name field:** Type a new name for the selected region in the field.
- B Region Pitch slider and field:** Drag the slider to transpose the selected Software Instrument region up or down by up to 36 semitones. You can also type the number of semitones in the field.
- C Velocity slider and field:** Drag the slider to change the velocity of selected notes. You can also type the velocity value in the field. A note's velocity reflects how hard the key is pressed when you play the note.
- D Zoom slider:** Drag to zoom in for a closer view or to zoom out to see more of the track.
- E Graphic/Notation View buttons:** Click to change the editor to graphic view or notation view.
- F Note Value button:** Click to choose the note value for notes you add.
- G Fix Timing button:** Click to fix the timing of notes in the selected region, or notes selected in the editor, so that notes move to the nearest grid position.
- H Beat ruler:** Shows beats and measures for the area visible in the editor.
- I Playhead:** Shows the point in the project currently playing.
- J Notation display:** Shows the musical events of Software Instrument regions in standard music notation. You can move notes to adjust their pitch and where they start playing, and change how long they play.
- K Scroll bar:** Drag the scroller to move to a different part of a track.

## For Podcasts and Video—Marker View

When you are working on a podcast episode, you can view and edit markers in the editor. In the marker list you can edit each marker's time position, marker region artwork, URL, URL title, and chapter title. You can also add episode artwork in the editor.



**A Episode Artwork well:** Drag artwork here to represent the podcast. (Appears only when creating a podcast.)

**B Marks a Chapter checkbox:** Shows whether the selected marker marks a chapter.

**Displays Artwork checkbox:** Shows whether the selected marker contains marker region artwork. (Appears only when creating a podcast.)

**Displays URL checkbox:** Shows whether the selected marker has a URL.

**C Add Marker button:** Add a marker at the playhead position.

**D Marker list:** Shows each marker's start time, artwork (for podcasts) or video frame (for videos), chapter title, URL, and URL title.

**E Time column:** Shows the start time for each marker.

**F Artwork column:** Shows the artwork for each marker region. Add artwork by dragging image files from the Media Browser. (Appears only when creating a podcast.)

**Still Frame column:** Shows the video frame at the position of each marker. (Appears only when working with a video.)

**G Chapter Title column:** Shows the title of each chapter marker. Click and type a title for a marker.

**H URL Title column:** Shows the title of each marker region's URL. Click and type a title for the URL.

**I URL column:** Shows the URL for each marker region. Type a URL (address) for the website for which you want to show a link.

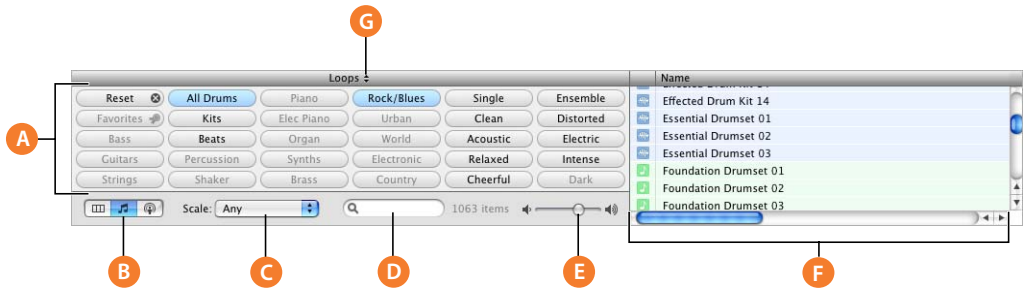
## Loop Browser

The loop browser lets you quickly find loops to add to your projects. You can find loops using keywords for instrument, musical genre, or mood. You can also perform text searches, and refine your results in several ways. The loop browser shows the tempo, key, and number of beats for each matching loop. You can preview loops in the loop browser before you add them to a project, and add more loops to GarageBand by dragging them onto the loop browser.

The loop browser gives you two ways to find loops: button view and column view.

### Button View

In button view, the loop browser contains a set of keyword buttons. Click a button to show matching loops in the results list. Clicking multiple buttons narrows the results to those loops that match all of the selected keywords.

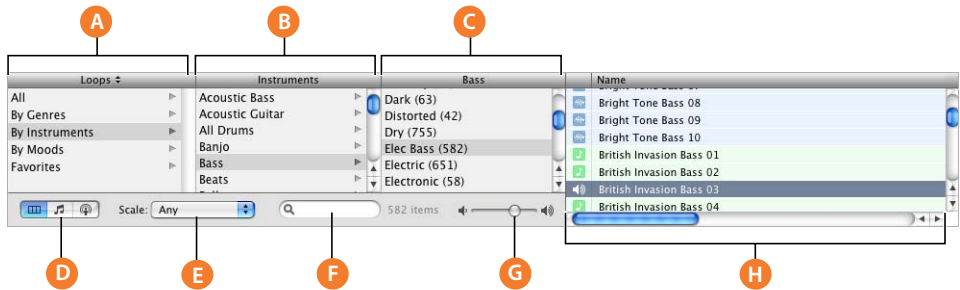


- A Keyword buttons:** Click a keyword button to display matching loops in the results list. You can click multiple keyword buttons to narrow your results.
- B View buttons:** Click one of the buttons to show column view, button view, or podcast sounds view.
- C Scale pop-up menu:** Choose a scale type to see only loops using that musical scale.
- D Search field:** Type text in the field to see loops with the text in their file name or path.
- E Preview volume slider:** Drag the slider to adjust the volume of the loop being previewed.
- F Results list:** Shows loops that match the selected keywords. Also displays the tempo, key, and number of beats for each loop. Click a loop in the results list to preview it. Click the Fav's checkbox for a loop to add it to your favorites.
- G Loop library pop-up menu:** Choose the loops you want to show in the loop browser from the pop-up menu.

## Column View and Podcast Sounds View

In column view, the loop browser features columns for keyword type, categories, and keywords. Click a keyword type to show categories for that type, click a category to show keywords, then click a keyword to show matching loops in the results list. Clicking multiple keywords expands the results to those loops matching any of the selected keywords.

In podcast sounds view, the loop browser shows a different set of columns, featuring sound effects, jingles, and other loops suitable for podcasts. You work with the columns in podcast sounds view the same way you do in columns view.



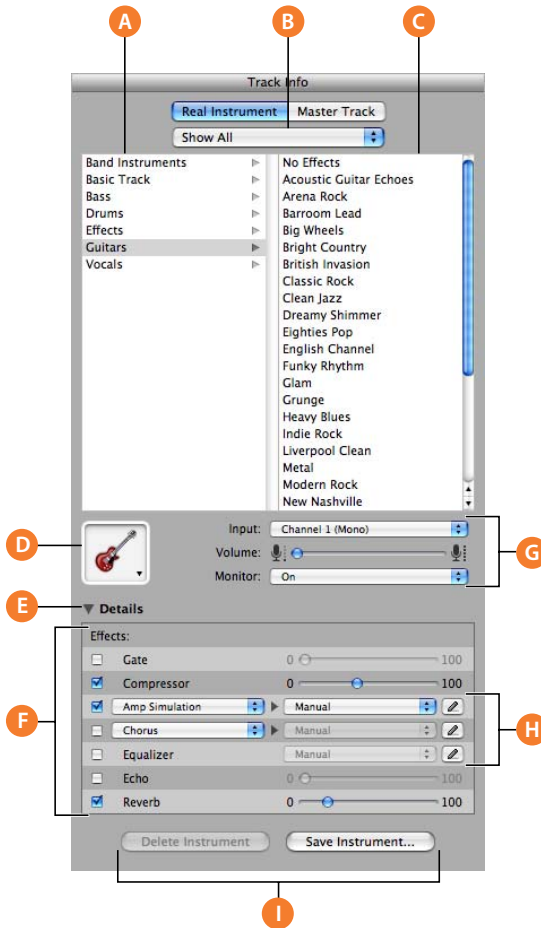
- A Keyword type column:** Click a keyword type to show the categories for that keyword type in the middle column.
- B Category column:** Click a category to show keywords for that category in the right column.
- C Keyword column:** Click a keyword to show matching loops in the results list. You can click multiple keywords to expand your results.
- D View buttons:** Click one of the buttons to change the view between column, button, or podcast sounds view.
- E Scale pop-up menu:** Choose a scale type to see only loops using that scale.
- F Search field:** Type text in the field to see loops with the text in their file name or path.
- G Preview volume slider:** Drag the slider to adjust the volume of the loop being previewed.
- H Results list:** Shows the loops that match the selected keywords. Also displays the tempo, key, and number of beats for each loop. Click a loop in the results list to preview it. Click the Favs checkbox for a loop to add it to your favorites.

## Track Info Pane

The Track Info pane shows the current instrument, effects, and input settings for the selected track, or the master effects settings for the master track. You can change these settings in the Track Info pane.

## Real and Software Instrument Tracks

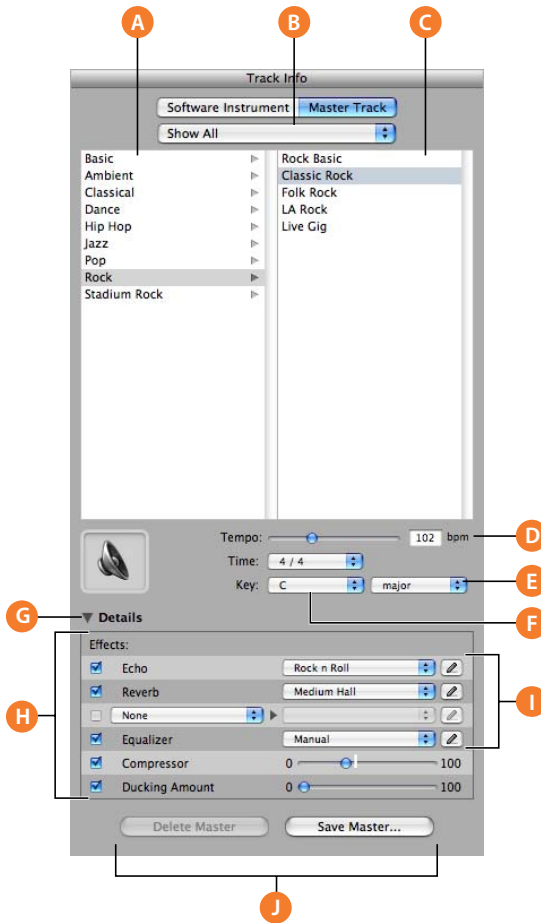
Some controls in the Track Info pane are different for Real Instrument tracks than for Software Instrument tracks (as noted below).



- 
- A Instrument category list:** Click an instrument category to see the instruments for that category in the instrument list on the right.
- 
- B Instrument library pop-up menu:** Choose which instruments you want to see in the category and instrument lists from the pop-up menu.
- 
- C Instrument list:** Click an instrument from the list.
- 
- D Instrument icon pop-up menu:** Click to choose a new instrument icon from the icon menu that appears. Icons make it easy to distinguish tracks that use similar instruments.
- 
- E Details triangle:** Click to show the instrument and effects settings.
- 
- F Effect checkboxes, sliders, and pop-up menus:** Click an effect checkbox to turn the effect on or off. Drag the sliders to adjust the level of the effects, or choose an item from the pop-up menus. The Track Info pane includes the following effects for Real and Software Instruments:
- **Noise gate slider (Real Instrument tracks only):** Drag the slider to adjust the amount of gating.
  - **Generator and generator preset pop-up menus (Software Instrument tracks only):** Choose an instrument generator, and generator preset, from the menus.
  - **Compression slider:** Drag the slider to adjust the amount of compression.
  - **Equalizer pop-up menu:** Choose an EQ setting from the pop-up menu.
  - **Effect and effect setting pop-up menus:** Click a checkbox to turn additional effects on or off. Choose an effect from a pop-up menu on the left, then choose an effect preset from the pop-up menu on the right.
  - **Echo slider:** Drag the slider to adjust the amount of echo.
  - **Reverb slider:** Drag the slider to adjust the amount of reverb.
- 
- G Input channel pop-up menu and buttons (Real Instrument tracks only):** Choose the input channel or channels for the instrument from the Input pop-up menu. Drag the Volume slider to set the input volume for the selected channel. Turn monitoring on or off using the Monitor pop-up menu.
- 
- H Effect edit buttons:** Click to show an effect's preset window, where you can edit the effect preset.
- 
- I Save Instrument and Delete Instrument buttons:** Click the Save Instrument button to save an instrument. Click the Delete Instrument button to delete a saved instrument.
-

## Master Track

The Track Info pane for the master track shows the global project settings and effects settings for the overall project. Global project settings include tempo, time signature, and key. Global effects settings include master echo, reverb, equalizer, and compressor.





The Echo and Reverb sliders for each track control the amount of echo and reverb sent from that track to the master echo and reverb effects. In the Track Info pane for the master track, you can change the master echo and reverb effects.

- 
- A Master effects category list:** Click a category to see the effects for that category in the master effects list on the right.
- 
- B Master effects pop-up menu:** Choose which master effects you want to see in the category and effects lists from the pop-up menu.
- 
- C Master effects list:** Click a set of master effects from the list.
- 
- D Tempo slider and field:** Drag the slider to change the project's tempo, or type a new tempo in the field.
- 
- E Time pop-up menu and field:** Choose a time signature from the pop-up menu.
- 
- F Key pop-up menu:** Choose a key from the pop-up menu.
- 
- G Details triangle:** Click to show the global effects settings.
- 
- H Effect checkboxes, pop-up menus, and slider:** Click an effect checkbox to turn the effect on or off. Choose an item from the pop-up menus, or drag the slider, to adjust an effect. The Track Info pane includes the following effects for the master track:
- **Echo pop-up menu:** Choose a global echo preset.
  - **Reverb pop-up menu:** Choose a global reverb preset.
  - **Effect and effect setting pop-up menus:** Click a checkbox to turn an additional effect on or off. Choose an effect from a pop-up menu on the left, then choose an effect preset from the pop-up menu on the right.
  - **Equalizer pop-up menu:** Choose a global equalizer setting from the pop-up menu.
  - **Compression slider:** Drag the slider to adjust the amount of global compression.
  - **Ducking Amount slider:** When ducking is enabled, drag the slider to adjust the amount of ducking applied to backing tracks.
- 
- I Effect edit buttons:** Click to show an effect's preset window, where you can edit the effect preset.
- 
- J Save Master and Delete Master buttons:** Click the Save Master button to save a set of master effects. Click the Delete Master button to delete a saved set of master effects.
-

## Media Browser

The Media Browser lets you find and add songs from your iTunes library, photos from your iPhoto library, iMovie projects, and other video files.



- A Audio, Photos, and Movies buttons:** Click the button for the type of media files you want to work with.
- B Source list:** Navigate to the folder containing the files you want to use. You can also add folders by dragging them from the Finder.
- C Media list:** View, preview, and select media files to add to your project.
- D Play button:** Click to preview the selected audio or video file. (not shown—only visible when viewing audio files or movies).
- E Search field:** Type text to search for files with matching names.

You start working in GarageBand by creating a project. Projects hold your music and all the changes you make.

Each project has a tempo, a time signature, and a key, which last for the entire length of the project. When you create a project, you set the tempo, time signature, and key in the New Project dialog. You can save a project as an archive, and export a project to iTunes or another iLife application.

In this lesson, you'll learn how to:

- Create a new project
- Set a project's tempo, key, and time signature
- Open existing projects
- Save projects

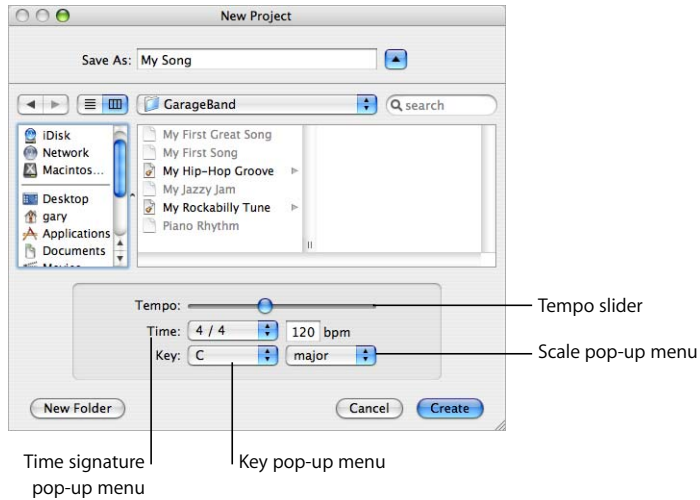
## Creating a Project

You start working in GarageBand by creating a new project.

**To create a new project:**

- 1 Choose File > New.
- 2 In the New Project dialog, select the type of project you want to create.
- 3 In the dialog that appears, browse to the location where you want to store the project, then type a name for the project in the Name field.
- 4 Set the project's tempo, key, and time signature as described in the following sections.

- 5 When you have finished making the project settings, click Create.



## Setting the Tempo

Each project has a speed, or *tempo*. The tempo defines the rate at which beats, the basic rhythmic pulse, occur in the project. The tempo is measured in beats per minute, or *bpm*. You can set the tempo to any speed between 60 and 240 bpm. The default tempo is 120 bpm, which is a common tempo used in popular music.

### To set the tempo:

- In the New Project dialog, drag the Tempo slider left to slow down the tempo, or right to speed up the tempo.

**Note:** You can change the tempo later in the time display, located below the timeline, or in the Track Info pane for the master track.



## Setting the Key

Each project has a key, which defines the central note to which the other notes in the music relate, and the scale used (either “major” or “minor”).

### To set the key:

- 1 In the New Project dialog, choose a key from the Key pop-up menu.
- 2 Choose the scale from the Scale pop-up menu to the right of the Key pop-up menu.

**Note:** You can change the key later in the Track Info pane for the master track.

If you change the key of a project after recording instruments or adding loops, all Software Instrument recordings and loops are transposed to the new key. Real Instrument recordings are not transposed.

## Setting the Time Signature

Each project also has a time signature, which controls the relationship between beats and measures. A project’s time signature consists of two numbers separated by a forward slash, which look similar to a fraction. The number on the left controls the number of beats in each measure, and the number on the right controls the beat value (the length of the note that gets one beat).

You can use any of the following time signatures in a GarageBand project: 2/2, 2/4, 3/4, 4/4, 5/4, 7/4, 6/8, 7/8, 9/8, or 12/8. The default is 4/4, the most commonly used time signature.

### To set the time signature:

- In the New Project dialog, choose a time signature from the Time pop-up menu.

**Note:** You can change the time signature later in the Track Info pane for the master track.

## Opening an Existing Project

You can open an existing project to continue working.

### To open an existing project:

- Choose File > Open, locate and select the project you want to open, then click OK.

You can also open a recently open project by choosing File > Open Recent and choosing a project from the submenu.

If you close the currently open project, a dialog appears, asking if you want to create a new project or open an existing project.

## Saving a Project

As you work, it's important to save your project often so you don't lose your changes.

### To save a project:

- Choose File > Save (or press Command-S).

When you save a project, by default GarageBand creates an iLife preview that is saved with the project. An iLife preview lets you preview the project in the Media Browser and in other iLife applications, but can increase the project's file size. You can select whether to create an iLife preview for projects in the General pane of GarageBand Preferences.

You can also save a project as an archive. When you save a project as an archive, all the audio files, loops, and other media the project uses are saved in the project file. This is especially useful if you want to copy the project to another computer, or are duplicating a project with your own Real Instrument recordings.

### To save a project as an archive:

- 1 Choose File > Save as.
- 2 In the Save As dialog, select the Save As Archive checkbox.

You can also compact projects to make sharing easier. Compacting a project reduces the file size by compressing audio in the project. Compacting can result in some loss of audio quality.

### To compact a project:

- 1 Choose File > Save as.
- 2 In the Save As dialog, select the Compact Project checkbox.
- 3 Choose the compression settings you want to use from the pop-up menu next to the Compact Project checkbox.

## Sending a Project to iTunes

You can send a project to an iTunes playlist, then play your exported projects in iTunes, download them to an iPod, or burn the playlist to a CD. Files are exported to iTunes in AIFF format. You can convert the exported file to another format, such as AAC or MP3, from within iTunes.

### To send a project to an iTunes playlist:

- Choose Share > Send to iTunes. The entire project, from the beginning (measure 1) to the end of the last region, is exported.

You can set the name of the iTunes playlist to which files will be exported, and also set the name of the album and composer, in the Export pane of GarageBand Preferences.

You can also export a single track, or a group of tracks, to an iTunes playlist. To export a single track, solo the track (or mute all other tracks) before exporting. To export a group of tracks, solo the tracks (or mute all other tracks) before exporting.

You can use Apple Loops to add backing and rhythm tracks to your projects. You can also add Apple Loops to your loop library, and create your own Apple Loops.

Most popular music today is based on repeating rhythmic patterns (sometimes called “grooves” or “riffs”), especially in the drum and bass parts. To create music in a groove-based style, an effective way of working is to add loops for the drum parts, then add loops for bass and other rhythm parts. This lets you define the rhythmic feel of the project, and also lets you build the basic arrangement of the project by blocking out sections with different grooves. Once the basic rhythm parts are in place, you can record Real and Software Instrument regions to add lead, solo, and harmony parts.

You can quickly define the feel of a project by adding Apple Loops. Apple Loops are prerecorded music files designed to seamlessly repeat a rhythmic pattern. When you add a loop to the timeline, you can extend it to fill any amount of time, making it easy to create drum parts and other rhythm parts.

When you add a loop to a project, GarageBand matches the loop’s tempo and key to the tempo and key of the project. This lets you use loops that were originally recorded at different speeds, and in different keys, and have them sound as though they were made to be played together.

In this lesson, you’ll learn how to:

- Find and preview loops in the loop browser
- Add loops to the timeline
- Create your own Apple Loops
- Add loops to the loop library



## Finding Loops With the Loop Browser

GarageBand includes a loop browser that lets you find loops by musical instrument, genre, or mood. You can also perform text searches, and refine your searches for loops in several other ways. No matter how large your collection of loops becomes, you can quickly find loops with the sound you want using the loop browser.

### To show the loop browser:

- Click the Loop Browser button (the button with the open eye).

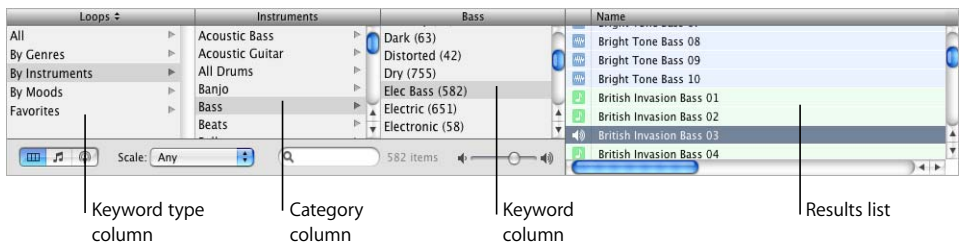
The loop browser has three views: column view, button view, and podcast sounds view. In button view, you click keyword buttons to show loops that match the keywords. In column view and podcast sounds view, you choose from different keyword types, categories, and keywords to show matching loops. You can select the loop browser view you want using the view buttons in the lower-left corner of the loop browser.

### To choose the type of view:

- Click the button with columns to show column view, click the button with musical notes to show button view, or click the button with a bell to show podcast sounds view.

## Finding Loops in Column View

In column view, clicking a keyword type in the left column shows categories for that keyword type in the middle column. Clicking a category shows keywords for that category in the right column. Clicking a keyword shows matching loops in the results list. You can expand your results by clicking multiple keywords.



### To find loops in column view:

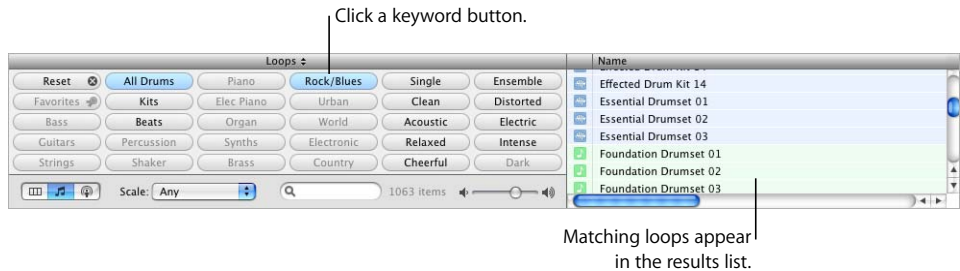
- 1 Click the column button in the lower-left corner of the loop browser to switch to column view.
- 2 Click a keyword type in the left column.
- 3 Click a category in the middle column.
- 4 Click a keyword in the right column to show matching loops in the results list.
- 5 To refine your results, click multiple categories or keywords. This expands the matching loops to include those that match any of the selected categories or keywords.

Now find some bass loops in column view by first selecting the By Instruments keyword type, then the Bass category, then the Grooving keyword.

When you find loops in either button view or column view, the total number of matching loops is shown next to the search field at the bottom of the loop browser.

## Finding Loops in Button View

Button view features a grid of keyword buttons. You click a button to see the loops matching the selected keyword in the results list to the right. You can narrow your results by clicking multiple buttons.



### To find loops in button view:

- 1 Click the button with musical notes in the lower-left corner of the loop browser to switch to button view.
- 2 Click a keyword button to show matching loops in the results list. The columns in the results list show the type of loop, name, tempo, key, and number of beats for each loop.
- 3 To refine your results, click multiple keyword buttons. This narrows the matching loops to only those that match all of the selected keywords.
- 4 To end a search, either click the selected keyword again to deselect it, or click the Reset button to deselect all selected keywords.

When you click a keyword, incompatible keywords (those that share no loop with the selected keyword) are dimmed.

Now find some drum loops in button view by clicking the Drums keyword button. Scroll through the list to see all the matching loops. Notice that the number of matching loops is shown next to the search field.

## Finding Loops in Podcast Sounds View

Podcast sounds view features a different set of columns letting you easily find and add podcast sounds. You find loops in podcast sounds view in the same way as in column view. For more information about creating podcasts, see “Creating Podcasts in GarageBand” on page 80.

## Previewing Loops in the Loop Browser

When you find loops that fit the criteria you want, you can preview them in the loop browser to hear which loop will sound best in your project. You can preview the loop by itself (solo), or hear it playing together with the project.

### To preview a loop:

- Click the loop in the results list. Click the loop again to stop previewing it.

Once you have added loops or recorded instruments in your project, you can preview a loop together with the project by clicking the Play button before you click the loop. When you preview a loop with a project, GarageBand matches the tempo and key of the loop to the project's tempo and key, and syncs the loop with the project so it starts playing on the beat.

When you preview a loop, you can also control the volume of the loop using the volume slider in the loop browser.



Drag the volume slider to adjust the volume of the loop.

### To adjust the volume of a loop being previewed:

- Drag the volume slider in the loop browser left to lower the loop's volume, or right to raise the loop's volume.

If you adjust the volume of a loop in the loop browser, then add the loop to your project by dragging it to an empty part of the timeline, the volume of the track created for the loop is set to the same volume.

Now try previewing the loops you found earlier, and see which ones you like.

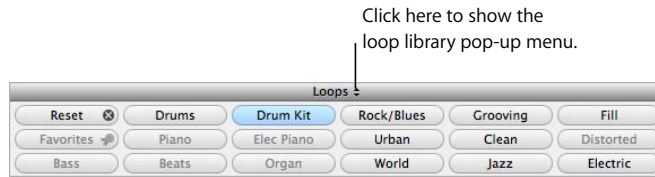
## Refining Your Searches

There are several ways you can refine your searches in the loop browser. You can:

- Display only loops from a specific Jam Pack or folder
- Display loops using a particular scale type
- Display only loops in keys near the project's key
- Perform text searches

## Displaying Loops From a Jam Pack or Folder

If you have installed one or more of the GarageBand Jam Packs on your computer, your loop library can contain many thousands of loops. To make searching for loops easier, you can choose to display only loops from a specific Jam Pack, or only the loops included with GarageBand. If you have created your own loops or added loops from another source, you can also choose to display only those loops.



### To display loops from a specific Jam Pack or folder:

- Choose the Jam Pack or folder with the loops you want to see from the loop library pop-up menu, located to the right of the word “Loops” at the top of the loop browser.

## Searching by Scale Type

Most loops other than drum loops are recorded using a particular musical scale. In most cases, when you arrange several loops so that they play together, you’ll want to use loops with the same scale type. You can narrow the loops shown in the results list to those using either the major or minor scale, those using neither scale, or those good for both.



### To display only loops with a particular scale type:

- Choose the scale type from the Scale pop-up menu.

Drum loops don’t usually have a scale type, so try refining the bass loops you found earlier to show only those using the major scale.

## Limiting Searches to Nearby Keys

Loops with melody and harmony instruments are recorded in a specific musical key. When you add a loop to a project, GarageBand matches the loop’s key with the key of the project. The closer the loop’s original key is to the key of the project, the more natural the loop will sound when transposed to the project’s key. When a loop is transposed by a large number of semitones, the result can sometimes sound unnatural or distorted.

### To display loops only in keys near the project's key:

- 1 Choose GarageBand > Preferences, then click Loops.
- 2 In the Loops pane, click the “Filter for more relevant results” checkbox.

**Note:** The “Filter for more relevant results” checkbox is selected by default. To see loops in keys farther away from the project's key, deselect the checkbox.

### Searching for Specific Text

You can quickly find loops with specific text in their file name or path using the search field. This makes it easy to find a loop by name, or to find all loops in a specific folder.

#### To perform text searches for loops:

- Type the text you want to search for in the search field, then press Return. Loops with the text in either their file name or path will be shown in the results list.

Try refining the drum loops you found earlier by typing “acoustic,” “club,” or “funk” in the search field. You can try typing other words to see what results you get.

You can use several methods together to find specific loops. For instance, you can use keywords with the Scale pop-up menu, or with the search field, to find only bass loops using the major scale, or to find only percussion loops with “latin” in the file name.

### Adding Loops to the Timeline

When you find a loop you want to use in your project, you add the loop to the timeline.



Drag a loop to an empty part of the timeline to create a new track for the loop.

#### To add a loop to the timeline:

- Drag the loop from the loop browser to an empty part of the timeline where there is no track. A new track of the appropriate type is created, and the loop is added to the new track.

You can also create a new track, then drag a loop of the same type (Real or Software Instrument) to the track. To learn about creating tracks, see Chapter 6 and Chapter 7.

There are two types of Apple Loops: Real Instrument loops or Software Instrument loops. In the loop browser, the loop's icon shows which type each loop is. Real Instrument loops can be dragged only to a Real Instrument track, and Software Instrument loops can be dragged to either a Real or Software Instrument track. Either type can be dragged to an empty part of the timeline to create a new track.

You can also convert a Software Instrument loop to a Real Instrument loop when you drag it to the timeline. Real Instrument loops require less processing power for playback, which can allow you to use more tracks and effects in your project, especially for projects with many loops.

**To convert a Software Instrument loop to a Real Instrument loop:**

- Option-drag the loop from the loop browser to the timeline.

By default, Option-dragging a Software Instrument loop converts it to a Real Instrument loop. You can change the default so that dragging a Software Instrument loop converts it to a Real Instrument loop, and Option-dragging does not convert it.

**To change the default behavior for converting Software Instrument loops:**

- 1 Choose GarageBand > Preferences, then click Loops.
- 2 Select the “Convert to Real Instrument” checkbox next to “Adding Loops to the Timeline.”

When you add a loop to a project, a region is created from the loop in the timeline. The edits you make to the region do not change the original loop, so you can always return to the original sound of the loop or use it in another project.

Now try adding some of the drum and bass loops you found earlier to the timeline.

## Creating Your Own Apple Loops

You can save Real and Software Instrument regions you record as Apple Loops. When you save a region as an Apple Loop, it is added to the loop library and appears in the loop browser, so you can use it in other projects.

Apple Loops you create from recorded regions match the tempo and key of the project, just like the Apple Loops included with GarageBand.

**To save a region as an Apple Loop:**

- 1 Select the region in the timeline.
- 2 Choose Edit > Add To Loop Library, or drag the region over the loop browser.
- 3 In the Add Loop dialog, do the following:
  - a Type a name for the loop.
  - b Choose the scale and genre from the pop-up menus.
  - c Choose an instrument category and instrument name from the list.
  - d Click the appropriate mood buttons for easy searching.
- 4 Click Create.

For information about recording Real and Software Instruments and creating regions, see Chapter 6 and Chapter 7.

## Adding Loops to the Loop Library

When you install GarageBand, the loops included with the application are installed in the Apple Loops library. When you add more loops to your collection, they are installed in the loop library, and appear in the loop browser for you to use.

### To add Apple Loops to your loop library:

- Drag the loops, or the folder containing the loops, over the loop browser. The loops are added to the Apple Loops library and are immediately available to use in your projects.

If you add loops located on a different hard disk or partition, a dialog appears asking whether you want to copy them to the loop library, or index them in their current location. If you add loops from the desktop, a dialog asks if you want to move them or index them in their current location.

If you add loops located on a CD or DVD, GarageBand copies them to the loop library.

## You build your projects by arranging Real and Software Instrument regions in the timeline.

Once you've added several loops to the timeline, you can make changes to their regions in the timeline to start building the arrangement of the project.

You can arrange regions in the timeline by cutting, copying, and pasting, moving and resizing, looping, and transposing them, by splitting and joining them, by fixing the timing of Software Instrument regions, and by renaming regions.

In this lesson, you'll learn how to:

- Select a single region or multiple regions
- Cut, copy, and paste regions
- Loop, resize, and move regions
- Transpose regions
- Split and join regions
- Fix the timing of Software Instrument regions
- Set Real Instrument regions to keep their original tempo
- Rename regions
- Use the timeline grid to snap regions to measures, beats, and other units of time
- Use Undo and Redo in GarageBand

### About Regions

Each time you record a Real or Software Instrument, you create a *region* in the instrument's track containing the music you record. When you drag a loop to the timeline, you create a region from the loop. Any changes you make to the region, such as splitting or transposing it, do not change the original recording or loop.

A region's color indicates what type of region it is:

- Purple—Real Instrument regions you record
- Blue—Real Instrument regions created from loops



- Orange—Regions from imported audio files
- Green—Software Instrument regions from both recordings and loops

Regions are the building blocks of a project. You define the feeling, build the structure, and create change and interest in a project by arranging regions in the timeline.

## Selecting Regions

In order to make changes to a region, you must first select it in the timeline.

**To select a region, do one of the following:**

- Select a single region by clicking it.
- Select multiple regions by Shift-clicking.
- Drag from a point before the first region to a point after the last one to select the regions in between.

**Note:** To select regions and perform other actions such as looping and resizing, you may need to zoom in on the region so that it is large enough to select.

## Cutting, Copying, and Pasting Regions

You can cut, copy, and paste regions using the standard Mac OS menu commands and keyboard shortcuts.

**To cut a region:**

- Select the region, then choose Edit > Cut.

**To copy a region, do one of the following:**

- Select the region, then choose Edit > Copy.
- Option-drag the region.

**To paste a region:**

- Move the playhead to the point in the timeline where you want the region to start, then choose Edit > Paste.

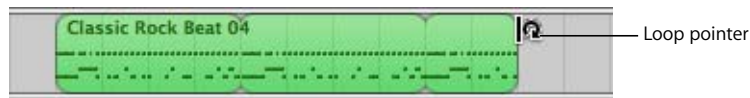
When you paste a region, the playhead moves to the end of the pasted region. You can paste additional copies of the region, and each one starts at the point in the timeline where the previous one ends.

## Looping Regions

You can loop a region so that it repeats. When you loop a region, it plays for as much time as you extend it in the timeline.

### To loop a region:

- 1 Move the pointer over the upper half of the right edge of the region. The pointer changes to a loop pointer, with a circular arrow.
- 2 Drag the edge of the region to the point where you want it to stop playing. The region will loop repeatedly to that point.



When you loop a region, the notches at the top and bottom of the region show the beginning and end of each repetition. You can drag to the end of a repetition, or have it end in the middle of a repetition.

Try looping the drum and bass regions you added to the timeline. Rhythm patterns in most popular music last for some multiple of four measures. For example, the verse and chorus of a popular project often last for 16 or 32 measures each.

## Resizing Regions

You can resize regions by either shortening or lengthening them.

- When you shorten a region, only the visible part of the loop plays.
- When you lengthen a region, you add silence (blank space) to its beginning or end.

### To resize a region:

- 1 Move the pointer over the lower half of either edge of the region. The pointer changes to a resize pointer, with an arrow pointing away from the region.
- 2 Drag the edge of the region to shorten it or lengthen it.



Resizing a region by lengthening adds silence to the region. This can be useful if you want to make copies of the region, each lasting for a certain number of beats.

**Note:** You can't lengthen a Real Instrument region beyond its original length.

## Moving Regions

You can move a region by dragging it to a new point in the timeline. You can also move a region to another track of the same type as the region (Real Instrument regions can only be moved to Real Instrument tracks, and Software Instrument regions can only be moved to Software Instrument tracks).

### To move a region:

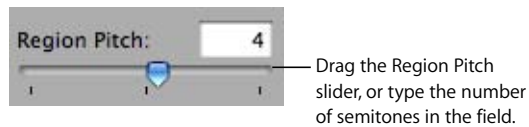
- Drag the region left or right to a new point in the timeline.
- Drag the region up or down to another track of the same type.

Two regions cannot overlap in the same track. If you drag a region over part of another region, the region being covered is shortened to the edge of the overlapping region. If one region completely covers another region, the region being covered is deleted from the track.

Try adding a new drum or bass loop to the timeline. Move it so it starts at the end of the one you added earlier, then loop it to create a new rhythmic groove.

## Transposing Regions

When you add a region to the timeline, the region is matched, or *transposed*, to the key of the project. In most situations, you'll want regions to be in the same key as the project. You can transpose a region to a different key when you want the project to temporarily move to a new key, or to create tension between the region and the rest of the project (called *dissonance*).



### To transpose a region:

- 1 Select the region in the timeline, then click the Editor button to open the editor. You can also double-click the region to open the editor.
- 2 Drag the Region Pitch slider to transpose the region up or down. You can also type the number of semitones you want to transpose the region in the field next to the slider. A *semitone* is the smallest distance between two musical notes.

Try adding a new bass loop after the one that you already dragged to the timeline, then transposing it. The most common transpositions are five and seven semitones up or down, but feel free to try whatever sounds good.

## Splitting Regions

You can split a region in the timeline. Splitting a region lets you start playing the region from a point other than the beginning, or use parts of a region in different places in the timeline.

- 1 Select the region you want to split.
- 2 Move the playhead over the point in the region where you want to split it.
- 3 Choose Edit > Split.

The selected region is split into two regions at the playhead. Only the selected region is split, even if regions in other tracks are under the playhead as well. If multiple regions are selected and are under the playhead, they will all be split.

When you split a Software Instrument region, any notes at the split point are shortened to that point.

## Joining Regions

You can join multiple regions into a single region. To be joined, the regions must be adjacent to each other on the same track, with no space between them.

Real Instrument regions from loops (blue) can't be joined. Recorded Real Instrument regions (purple) can only be joined to other Real Instrument regions, and Software Instrument regions (green) can only be joined to other Software Instrument regions.

- 1 Make sure the regions are the same type, on the same track, and adjacent to each other.
- 2 Select the regions.
- 3 Choose Edit > Join.

When you join Real Instrument regions, a dialog appears asking if you want to create a new audio file. Click Create to join the regions in a new Real Instrument region.

## Fixing the Timing of Software Instrument Regions

You can fix the timing of Software Instrument regions you record. When you fix the timing of a region, the notes in the region move to the nearest grid position, as set in the timeline grid menu in the upper-right corner of the editor.

### To fix the timing of a recorded region:

- Select the region, then click the Fix Timing button (with the words “Align to” followed by the current note value).

**To set the note value for Fix Timing:**

- Click the Grid button at the upper-right corner of the editor, then choose a note value from the menu, or choose Automatic.

## Setting Real Instrument Regions to Keep Their Original Tempo

By default, Real Instrument recordings (purple) and Real Instrument loops (blue) in the timeline follow the project tempo. You can set a Real Instrument region to keep its original tempo.

**To set a Real Instrument region to follow its original tempo:**

- 1 In the timeline, select the Real Instrument region.
- 2 Open the editor.
- 3 Deselect the Follow Project Tempo checkbox.
- 4 If you decide you want the region to follow the project tempo, select the region, then select the Follow Project Tempo checkbox.

The Follow Project Tempo checkbox is unavailable when an audio file (orange), a Real Instrument loop tagged as a “one-shot,” or a Software Instrument region (green) is selected. You can convert a Software Instrument loop to a Real Instrument loop when you add it to the timeline, then set the Real Instrument loop to keep its original tempo.

## Renaming Regions

You can rename a region in the editor.

**To rename a region:**

- 1 Click the region in the timeline to select it, then click the Editor button. You can also double-click the region to open the editor. The waveform of the region appears in the editor. Be sure the header over the Name field says Region before you type the new name.
- 2 Select the text in the Name field, then type the new name in the field.

## Using the Grid

When working with regions in the timeline, you usually want them to align with the beats and measures in the beat ruler, so they start playing on the beat. GarageBand features a grid that makes it easy to align regions with beats and measures in the beat ruler, and with other musical note values.

When you turn on the grid, the playhead, regions, and other items in the timeline snap to the nearest grid position in the timeline and the editor when you move or resize them.

**To turn the grid on or off:**

- Choose Control > Snap to Grid.

The grid can be set to any of the following note values:

- 1/4 notes, 1/8 notes, 1/16 notes, or 1/32 notes
- 1/4 note triplets, 1/8 note triplets, or 1/16 note triplets
- 1/8 note swing light or swing heavy, 1/16 note swing light or swing heavy

The grid can also be set to Automatic. When set to Automatic, the grid changes when you zoom in or zoom out. The grid division moves between measures, 1/4 notes, 1/8 notes, 1/16 notes, and 1/32 notes, depending on the zoom level.

**To set the grid value:**

- Click the Grid button in the upper-right corner of the timeline, then choose a note value from the menu, or choose Automatic.

## Using Undo and Redo

As you build your arrangement in the timeline, you may want to undo or redo some of the changes you make. If you decide you don't like the last change you made to a project, it can usually be undone. After undoing it, if you decide you like the project better with the change, you can redo it.

You can also use the Undo and Redo commands as a quick way of trying out changes to a project. You can make several changes to the project, then step back through the changes using Undo. If you change your mind after undoing a step, you can recover the changes using Redo. You can undo or redo any number of actions, since the last time you saved. At any point, you can save a new version of the project by choosing File > Save As.

**To undo the last change:**

- Choose Edit > Undo.

**To redo the last change:**

- Choose Edit > Redo.

You can play and record guitars, basses, and any musical instrument you can capture using a microphone in Real Instrument tracks.

When you record a microphone or musical instrument, the recording appears as a Real Instrument region in the Real Instrument track. You can change input settings and add effects to a Real Instrument track in the Track Info pane.

In this lesson, you'll learn how to:

- Add a Real Instrument track or a basic track
- Monitor Real Instrument input
- Record a Real Instrument
- Use the cycle region to record over a specific part of a project
- Change Real Instrument settings
- Use the instrument tuner with Real Instruments
- Add audio files from the Finder

## Adding a Real Instrument Track

To record a Real Instrument, you can add a new Real Instrument track or record on an existing Real Instrument track.

**To add a Real Instrument track:**

- 1 Click the Add Track button, or choose Track > New Track.
- 2 In the New Track dialog, click Real Instrument, then click Create.  
The new track appears in the timeline, and the Track Info pane opens.
- 3 In the Track Info pane, select an instrument category from the Category list, then select an instrument from the Instrument list.
- 4 Select the input format by clicking either the Mono or Stereo format button, then choose the input channel from the Input pop-up menu.

If the instrument you are recording has a single input, select the Mono format. If the instrument has left and right inputs, select the Stereo format. If only mono inputs are available, you can't select Stereo.

You can also add a basic track. A basic track is a stereo Real Instrument track containing no effects. You can change the input format and effects settings of a basic track after adding it to the project.

**To add a basic track:**

- Choose Track > New Basic Track.

## Monitoring Real Instrument Input

Hearing your instrument while you play and record is called *monitoring*. When you create a Real Instrument track, you can turn on monitoring for the track in the New Track dialog. You can turn monitoring on or off in the Track Info pane.

**To turn monitoring on or off for a Real Instrument track:**

- 1 Select a Real Instrument track, then click the Track Info button to open the Track Info pane.
- 2 Choose On or Off from the Monitor pop-up menu.

Turning on monitoring can produce feedback (loud, sharp noise) if the audio input picks up the sound being output through your speakers. This is the reason monitoring is off by default. You may want to turn off monitoring for a Real Instrument track when you are not singing into the microphone or playing the instrument connected to the track. If you are recording multiple Real Instrument tracks, be sure to turn off monitoring when you finish recording a track to prevent feedback.

## Getting Ready to Record

Once you have connected your instrument and added a track to record in, there are a few things to check before you start recording:

- Make sure the microphone or instrument is connected properly and is working.
- Make sure the correct audio drivers are selected in the Audio/MIDI pane of GarageBand Preferences.
- Open the Track Info pane to make sure the instrument has the instrument and effects settings you want, and is using the correct input channel (or pair of channels). See “Changing Real Instrument Settings” on page 51 for more information.
- Sing or play a few notes and watch the track's level meters in the track mixer to make sure the track is receiving input, and isn't clipping. If the red dots at the right of the level meters (called *clipping indicators*) light up, try dragging the volume slider to the left a little to lower the input volume.



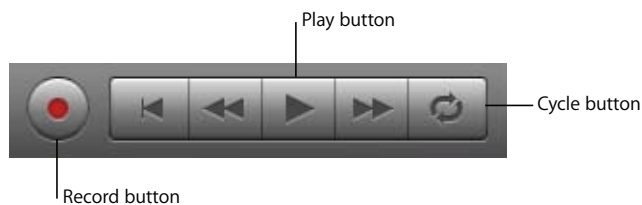
- You may want to set the project tempo and key before recording a Real Instrument. Real Instrument recordings are fixed in tempo and key, unlike loops and Software Instrument recordings, and cannot be changed after they are recorded.

## Recording a Real Instrument

Now you're ready to record your Real Instrument. You can record one Real Instrument track at a time.

### To record a Real Instrument:

- 1 Click the header of the Real Instrument track you want to record in to select the track.
- 2 Move the playhead to the point in the timeline where you want to start recording.
- 3 Choose Control > Count In to have the metronome play a one-measure count-in before recording starts. You can also set the playhead a few beats before the point where you want the music to come in to make it easier to start playing on the beat.
- 4 Click the Record button to start recording.



- 5 Start playing your instrument, or singing into your microphone. As you record, a new region appears in the selected Real Instrument track with the music you record.
- 6 When you are finished, click the Play button to stop recording.

An audio waveform appears in the newly recorded region.

After you record, you can listen to your new recorded part to see how you like it.

### To hear the new recording:

- 1 Move the playhead to the point in the timeline where the new region starts (align it with the left edge of the region). You can also move the playhead to an earlier point in the project, or to the beginning of the project, to hear the new recording in the context of the project.
- 2 Click the Play button, or press the Space bar.

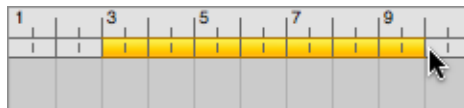
## Recording a Real Instrument With the Cycle Region

GarageBand lets you record over a specific part of a project. Musicians sometimes call this “punching in” and “punching out,” and call the points where you start and stop recording “punch points.”

To record over a specific part of a project, you set the cycle region in the timeline.

### To set the cycle region:

- 1 Click the Cycle button. The cycle region appears as a yellow strip just below the beat ruler.
- 2 Move the cycle region to the point in the timeline where you want to start recording, then drag the end of the cycle region to the point in the timeline where you want to end recording. You can drag in the cycle region ruler (below the beat ruler) to move the cycle region to a new part of the timeline.



You may want to have the cycle region start a few extra beats before the point where you want to start recording, to make it easier to start playing on the beat, and end a few beats after you want to stop recording, in case your last note extends past the end of the cycle region.

### To record using a cycle region:

- 1 Select the Real Instrument track you want to record in.
- 2 Click the Record button to start recording.
- 3 Play your musical instrument, or sing into your microphone. As you record, a new region appears in the selected Real Instrument track.  
Real Instruments only record the first time through the cycle region. When the cycle region repeats, you hear the newly recorded region.
- 4 When you are finished, click the Play button to stop the cycle region.
- 5 If you want to replace the recorded region, click the Record button and play the part again.
- 6 When you have finished using the cycle region, click the Cycle button again to turn it off.

## Recording Multiple Real Instrument Tracks

You can record up to eight Real Instruments and one Software Instrument at the same time. This lets you record voices and instruments together, and simultaneously record a backing track, for example.

When you select a track, recording is enabled for that track (meaning that recording will start on that track when you click the Record button). You can enable up to seven additional tracks by clicking the round Record Enable button in each track's header. The Record Enable button turns red to show that the track is enabled for recording.

To disable a track for recording, click the Record Enable button in the track's header again.

### To record multiple Real instruments at the same time:

- 1 Be sure each Real Instrument track is set to use a different input channel (or pair of channels) in the Track Info pane.
- 2 Enable the tracks you want to record by clicking their Record Enable buttons.
- 3 Click the Record button in the transport controls to start recording.

### To record a Software Instrument at the same time as one or more Real Instruments:

- 1 Enable the Software Instrument track for recording by clicking its Record Enable button.
- 2 Click the Record button in the transport controls to start recording.

If you enable more than eight Real Instrument tracks or more than one Software Instrument track, the track farthest from the last track you enable is disabled for recording, so as not to exceed the maximum number of recording tracks.

To record on multiple tracks, you need to have an audio interface with at least two input channels for recording.

## Changing Real Instrument Settings

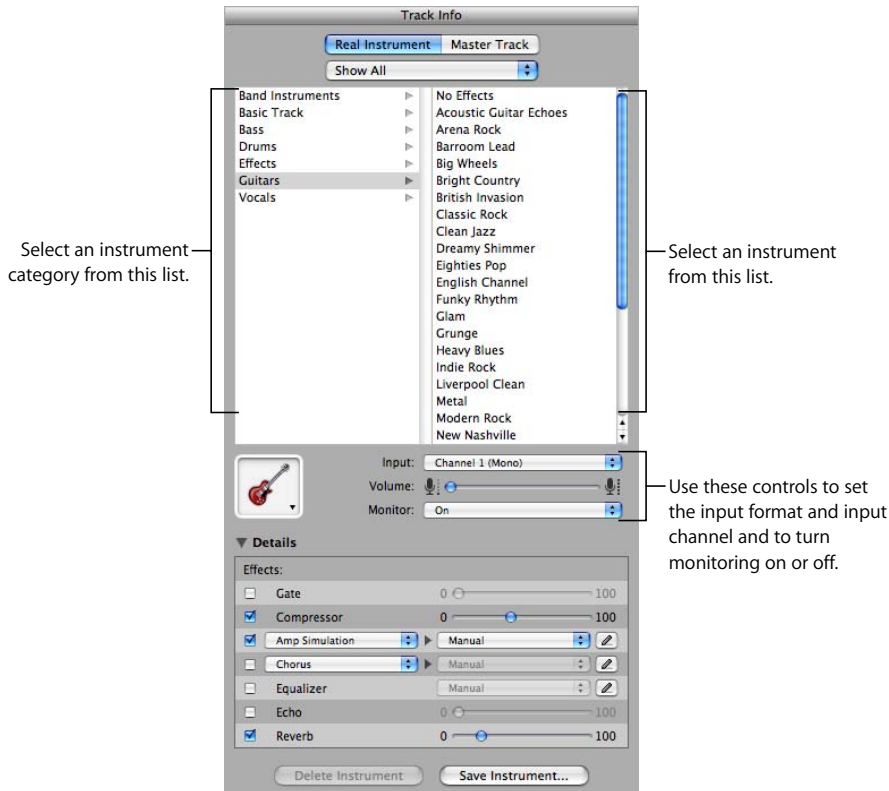
When you create a Real Instrument track, you select an instrument for the track in the New Track dialog. You can change the instrument, effects, and input settings in the Track Info pane.

### Changing the Instrument

You can change the instrument for a Real Instrument track. Each instrument includes preset effects optimized for the instrument.

### To change the instrument for a Real Instrument track:

- 1 Select the track, then click the Track Info button to open the Track Info pane.
- 2 Select an instrument category from the list on the left, then select a track instrument from the list on the right.



## Changing the Input Channel

When you create a Real Instrument track, you set the input channel (for mono input) or pair of channels (for stereo input). You can change these settings in the Track Info pane.

### To change the input channel:

- 1 Select the track, then click the Track Info button to open the Track Info pane.
- 2 Choose an input channel, or pair of channels, from the Input pop-up menu.

The number and format of input channels varies, depending on what type of audio interface is connected to your computer.

## Adjusting Input Volume

You can adjust the input volume for a Real Instrument track. The input volume controls the volume of the signal coming from the instrument or microphone. In general, set the input volume as high as possible without causing clipping or distortion for the best results.

**To adjust the input volume, do one of the following:**

- If the instrument or microphone has a volume control, adjust the volume control on the device.
- If the instrument or microphone is connected to an audio interface, adjust the volume control on the audio interface.
- In the Track Info pane, drag the Volume slider left to lower the input volume for the selected channel, or drag it right to raise the input volume.

**Note:** You can't control the volume of some audio interfaces and other devices from GarageBand. If the Volume slider in the Track Info pane is dimmed, you cannot adjust the input volume in GarageBand.

You can also add and adjust effects for a Real Instrument track. For information about using effects, see “Mixing and Adding Effects” on page 72.

## Using the Instrument Tuner

GarageBand includes an instrument tuner that you can use to check the tuning of any Real Instrument connected to your computer. The tuner is especially helpful when playing and recording guitars, basses, and other instruments that may need regular retuning.

The instrument tuner shows a horizontal scale with zero (0) in the center. The note name is displayed to the left of the scale. When you play a single note on your Real Instrument, the pitch is shown in relation to the correct pitch for the note displayed.



**To use the instrument tuner:**

- 1 Make sure the Real Instrument you want to tune is connected to your computer.
- 2 Select the Real Instrument track for the instrument you want to tune.
- 3 Click the tuner icon (the tuning fork) at the left of the time display, or choose Control > Show Instrument Tuner.

Be sure to play only a single note while tuning. The instrument tuner can't tune to a chord, or if you play different notes rapidly.

The instrument tuner works for Real Instruments, but not for Software Instruments.

## Adding an Audio File From the Finder

In addition to recording audio in a Real Instrument track, you can add audio files from the Finder to your projects. You can add an audio file in any of the following formats:

- AIFF
- WAV (including Sony ACID WAV files)
- AAC (except protected AAC files)
- Apple Lossless
- MP3

When you add a compressed file to a project, it stays compressed, saving space and time.

**To add an audio file:**

- Drag the file from the Finder to the timeline, either to a Real Instrument track or to the empty area below the existing tracks.

If you drag an audio file to the empty area below the existing tracks, a new basic track is added to the timeline, and the audio file is placed in the new track.

**Note:** Audio files you drag from the Finder will not change to match the tempo or key of the project.

# Working With Software Instruments

# 7

GarageBand includes an extensive set of Software Instruments, including drums, guitars, pianos, organs, and synthesizers.

You can play and record Software Instruments using the onscreen music keyboard in GarageBand, or by connecting a MIDI-compatible music keyboard to your computer. You can add effects to a Software Instrument, and edit Software Instrument regions in the editor.

In this lesson, you'll learn how to:

- Play and record Software Instruments using Musical Typing, the onscreen keyboard, or a connected music keyboard
- Change Software Instrument settings

## Using Musical Typing

Using Musical Typing, you can play and record Software Instruments using your computer keyboard. When you show the Musical Typing window, you can play the top and middle row of your computer keyboard just like the keys on a music keyboard to play notes.

**To show the Musical Typing keyboard:**

- Choose Window > Musical Typing (or press Command–Shift–K).



### To play notes using Musical Typing:

- With the Musical Typing window open, play the keys shown on the Musical Typing keyboard.
  - The keys in the middle row of your computer keyboard play the “white keys” on the piano keyboard, in a one and one-half octave range from C through F.
  - The keys W, E, T, Y, U, O, and P in the top row of your computer keyboard play the “black keys” (sharps and flats).

### To move up or down by octaves, do one of the following:

- Press Z to move down by an octave.
- Press X to move up by an octave.
- Click the small keyboard at the top of the Musical Typing window to move to the octave shown, or drag the blue rectangle. The blue rectangle shows the current range of Musical Typing.

### To change the velocity level of notes you play using Musical Typing:

- Press C to lower the velocity level.
- Press V to raise the velocity level.

### To add pitch bend to notes you play using Musical Typing:

- Press 1 to lower the pitch of notes.
- Press 2 to raise the pitch of notes.

The pitch is bent for as long as you press the key.

### To add modulation to notes you play using Musical Typing:

- Press 4 through 8 to add increasing amounts of modulation. Press 3 to turn off modulation.

The level of modulation lasts until you change it or turn it off by pressing another key.

## Using the Onscreen Music Keyboard

You can use the onscreen music keyboard to play and record Software Instruments. When you show the onscreen music keyboard, by default it displays a four-octave range of keys. You can resize the keyboard to display up to 10 octaves.

### To show the onscreen music keyboard:

- Choose Window > Keyboard.





**To play the onscreen music keyboard:**

- Click the notes on the keyboard. You can click when the project is playing, when it is stopped, or when recording.

Clicking a note lower on the key plays the note with a higher velocity (equivalent to pressing the key harder), and clicking a note higher on the key plays the note with a lower velocity (equivalent to pressing the key more softly).

**To move the keyboard:**

- Place the pointer anywhere in the space above the keys and drag.

**To resize the keyboard:**

- Drag the resize control in the lower-right corner of the keyboard window.

**To change the range of notes you can play:**

- Click the small triangle to the left or right of the keys. Clicking the triangle to the left lowers the keys by an octave, and clicking the triangle on the right raises the keys by an octave.

## Adding a Software Instrument Track

To record a Software Instrument, you can add a new Software Instrument track or record on an existing Software Instrument track.

**To add a Software Instrument track:**

- 1 Click the Add Track button, or choose Track > New Track.
- 2 In the New Track dialog, click Software Instrument, then click Create.  
The new track appears in the timeline, and the Track Info pane opens.
- 3 In the Track Info pane, select an instrument category from the Category list, then select the instrument you want to use from the Instrument list.

## Getting Ready to Record

If you are recording Software Instruments using a music keyboard, there are a few things to check before you start recording:

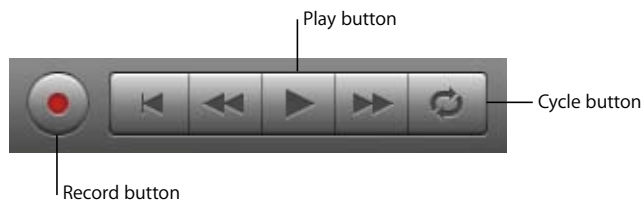
- Make sure your music keyboard is connected to your computer and is working.
- Select a Software Instrument track and try playing your music keyboard, clicking notes on the onscreen music keyboard, or using Musical Typing. You should hear the Software Instrument as you play.

## Recording a Software Instrument

Now you're ready to record a Software Instrument. You can record one Software Instrument track at a time.

### To record a Software Instrument:

- 1 Click the header of the Software Instrument track you want to record in to select the track.
- 2 Move the playhead to the point in the timeline where you want to start recording.
- 3 Choose Control > Count In to have the metronome play a one-measure count-in before recording starts. You can also set the playhead a few beats before the point where you want the music to come in to make it easier to start on the beat.
- 4 Click the Record button to start recording.



- 5 Start playing your music keyboard, clicking notes on the onscreen music keyboard, or using Musical Typing. As you record, a new region appears in the selected Software Instrument track.
- 6 When you are finished, click the Record button again to stop recording. Click the Play button to stop the project playing.

After you record, you can listen to your new recorded part to see how you like it.

### To hear the new recording:

- 1 Move the playhead to the point in the timeline where the new region starts (align it with the left edge of the region). You can also move the playhead to an earlier point in the project, or to the beginning of the project, to hear the new recording in the context of the project.
- 2 Click the Play button, or press the Space bar.

## Recording a Software Instrument With the Cycle Region

You can record a Software Instrument using a cycle region, similar to how you would with a Real Instrument. When you record a Software Instrument with a cycle region, you can keep recording for as many times as the cycle region repeats. Each new cycle is merged with the region created the first time through the cycle region. For information on recording using a cycle region, see "Recording a Real Instrument With the Cycle Region" on page 50.

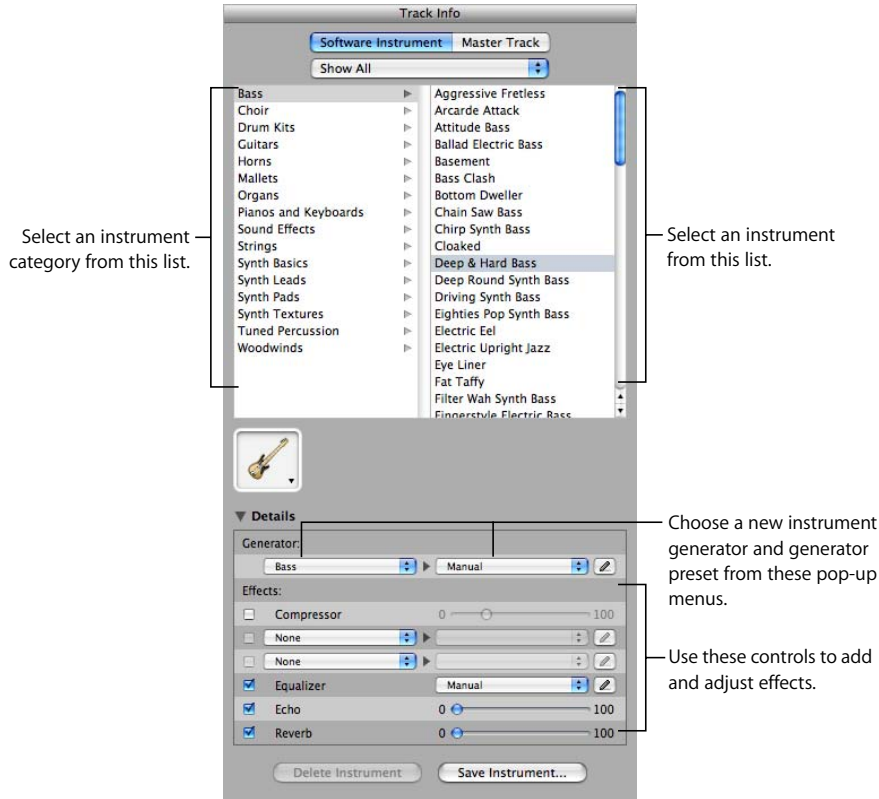
## Changing Software Instrument Settings

When you create a Software Instrument track, you select an instrument for the track in the New Track dialog. You can change the instrument in the Track Info pane.

### To change the instrument for a Software Instrument track:

- 1 Select the track, then click the Track Info button to open the Track Info pane.
- 2 Select an instrument category from the list on the left, then select a track instrument from the list on the right.

The output of a Software Instrument is always stereo.



You can also add and adjust effects for a Software Instrument track. For information about using effects, see “Mixing and Adding Effects” on page 72.

The editor, located below the timeline, is where you edit Real and Software Instrument regions. You can edit each type of region in a variety of ways.

In the editor, Real Instrument regions appear as audio waveforms. Software Instrument regions appear as either a graphic note display, or as music notation, depending on which view you select. For both Real and Software Instrument regions, the editor features a beat ruler to help you make precise edits, and a playhead which you can lock to the timeline playhead, or unlock to see a different part of the project in the editor.

In this lesson, you'll learn how to:

- Select a single region or multiple regions
- Edit Real Instrument regions in the editor (by moving, cropping, and joining them)
- Enhance the tuning and timing of Real Instrument tracks
- Edit notes and controller information in a Software Instrument region

## Selecting Regions

In order to edit a region in the editor, you first select the region in the timeline.

**To select a region, do one of the following:**

- Select a single region by clicking it.
- Select multiple regions by Shift-clicking.
- Drag from a point before the first region to a point after the last one to select the regions in between.

## Editing Real Instrument Regions

You can edit Real Instrument regions in the editor in several ways. You can:

- Move regions
- Crop part of a region
- Join regions
- Enhance the tuning of single-note (monophonic) regions
- Enhance the timing of regions

The editor includes its own grid, which you can set independently of the grid for the timeline, using the Grid button in the upper-right corner of the editor.

### Moving Real Instrument Regions

You can move Real Instrument regions in the editor in order to align them precisely with measures and beats, or with other regions.

#### To move a Real Instrument region in the editor:

- 1 Move the pointer over the top part of the region, close to the beat ruler.  
The pointer becomes a move pointer (a vertical line with arrows pointing left and right).
- 2 Drag the region to its new position.

### Cropping Part of a Real Instrument Region

You can easily cut part of a Real Instrument region, whether at the beginning, the end, or in the middle of the region. This is especially useful if you want to delete, move, or copy an individual note, chord, or phrase in a region.

#### To crop part of a Real Instrument region:

- 1 Move the pointer over the place where you want to cut the region (except at the top).  
The pointer becomes a crop pointer (a crosshair).
- 2 Drag to select the part of the region you want to crop.  
The selected part of the region appears darker blue.
- 3 Click the selected part of the region.
- 4 The selected part is cropped from the rest of the region, and is now a separate region.  
You can select it, delete it, move it, or copy it, just as you would any Real Instrument region.

## Joining Real Instrument Regions

You can join Real Instrument regions that are next to each other in the editor.

### To join regions:

- Select the regions, then choose Edit > Join (or press Command-J).

## Enhancing the Tuning of Real Instrument Tracks

You can enhance the tuning of a Real Instrument track. This is especially useful when you record Real Instrument regions that have the right “feel” and timing but are not perfectly in tune.

When you use the Enhance Tuning slider, all regions on the selected track (both your own recordings and loops) are enhanced. Enhance Tuning can only produce accurate results on single-note (monophonic) Real Instrument regions, so be sure the track does not include regions with chords or unpitched sounds.

By default, Enhance Tuning enhances the tuning of notes by moving them to the closest note in the project’s key. You can limit the enhancement to the notes of the chromatic scale instead by deselecting the “Limit to key” checkbox.

### To enhance the tuning of a Real Instrument track:

- 1 In the timeline, select the Real Instrument track you want to enhance.
- 2 Drag the Enhance Tuning slider right to increase the amount of tuning enhancement, or drag it left to decrease the amount of enhancement.
- 3 To limit tuning enhancement to the chromatic scale, deselect the “Limit to key” checkbox below the slider.

You hear the results immediately as the project plays.

Setting the Enhance Tuning slider to higher values can sometimes lead to undesirable results. Listen carefully to the results of using the slider and set it to the value that sounds best.

## Enhancing the Timing of Real Instrument Tracks

You can enhance the timing of a Real Instrument track. This is especially useful when you record Real Instrument regions where the notes are the right pitch, but are not perfectly in time with the project.

When you use the Enhance Timing slider, all regions on the selected track (both your own recordings and loops) are enhanced. You can enhance the timing of single-note, chordal, and percussion (unpitched) Real Instrument regions. Enhance Timing works better with regions that contain distinct patterns of notes than with pads or ambient sounds.

### To enhance the timing of a Real Instrument track:

- 1 In the timeline, select the Real Instrument region you want to enhance.
- 2 Drag the Enhance Timing slider to the right to increase the amount of timing enhancement, or drag it left to decrease the amount of enhancement.

If you move the Enhance Timing slider while the project is playing, it may take a moment for it to “catch up” with the music.

The Enhance Timing slider may not work equally well with all musical material, especially when set to higher values. Listen carefully to the results of using the slider and set it to the value that sounds best.

## Editing Software Instrument Regions

You can edit Software Instrument regions in the editor in several ways. You can:

- Edit individual notes (including the note’s pitch, duration, and timing)
- Edit controller information (including velocity, mod wheel, pitch bend, and sustain)

### Editing Notes in a Software Instrument Region

You can edit individual notes of a Software Instrument region. When you view the region in the editor, individual notes in the region are displayed in a graphic format:

- The left edge of the note shows the point in the timeline it starts playing.
- The width of the note shows how long it plays.
- The vertical position of the note shows its pitch, in relation to the piano keyboard displayed vertically along the left edge of the editor.

You can drag notes to a new starting point, resize notes to shorten or lengthen how long they play, and drag notes up or down to a different pitch. You can also select multiple notes and edit them at the same time.

**Note:** To edit notes in the editor, you may need to zoom in so that the notes are large enough to select and edit.

#### To edit notes in a Software Instrument region:

- Drag the note left or right to a new starting point. You can use the beat ruler in the editor to align the note with a specific beat or measure.
- Drag the lower-right corner of the note to resize it.
- Drag the note up or down to raise or lower its pitch. Use the piano keyboard along the left edge of the editor to see the pitches.

You can also select multiple notes in the editor, and edit them at the same time.

**To select multiple notes:**

- Shift-click or Command-click the notes you want to select.
- Drag from a point before the first note to a point after the last note, enclosing the notes you want to select.

When you edit multiple notes, each note is changed by the same amount. For example, if you select several notes and drag them to a new starting point, each note is moved by the same number of beats. If you resize several notes at the same time, each note is shortened or lengthened by the same amount. If you drag several notes up or down to a different pitch, each note is changed by the same number of semitones.

You can also fix the timing of individual notes in the editor. When you fix the timing of notes in the editor, the selected notes move to the nearest grid position, as set in the timeline grid menu in the upper-right corner of the editor.

**To fix the timing of individual notes:**

- Select the notes you want to fix in the editor, then click the Fix Timing button (with the text “Align to” followed by a note value).

**Editing Controller Information in a Software Instrument Region**

Most music keyboards designed to be used with computer music programs include “controllers” for pitch bend and modulation. These controllers are often circular “wheels” placed at the left end of the keyboard. Some keyboards also include other controllers, such as a sustain pedal, a foot controller, or an expression control.

Moving the pitch bend wheel while you play causes the notes you play to bend up or down in pitch, like a guitar. Moving the modulation wheel creates changes in the sound of the Software Instrument. The changes are different for different instruments, but often involve changing the frequency, rate, or intensity of a filter applied to the instrument.

If you move a controller while recording a Software Instrument, the movements are recorded in the Software Instrument region. You can see the movements you recorded and edit them in the editor.

**To display controller information for a Software Instrument region:**

- 1 Double-click the region to open it in the editor.
- 2 Choose the type of controller information you want to see from the Display pop-up menu.



Controller information is displayed as a line with “dots” at different points in time, similar to the way volume and pan curves are displayed in the timeline. Each “dot” (called a control point) shows a change in value (in this case the movements of the controller) at that point in time. You can edit the controller information by adding new control points, and by adjusting control points to change their value or to change where in the timeline they occur.

**To add a control point:**

- Click the line in the editor at the point where you want to add a control point.

**To adjust a control point, do one of the following:**

- Drag the control point up or down to a new value.
- Drag the control point left or right to move it to a different point in time.

You can also view and edit Software Instrument regions in notation view in the editor. For information about notation view, see “Working in Notation View” on page 66.

You can view and edit Software Instrument regions in standard music notation format. In notation view, you can edit notes and other musical events, including adding pedal markings.

In this lesson, you'll learn some basics about music notation, and learn how to:

- View Software Instrument regions as musical notation
- Choose the note value for notation view
- Add, select, and edit notes in notation view
- Add pedal symbols

## About Notation View

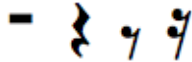
In addition to the editor's graphic "piano roll" view, you can view Software Instrument regions (both those you record and those from loops) in notation view. In notation view, the notes in a region are shown as musical notes. Notation view includes other musical symbols such as rests, staves, clef signs, time signatures, key signatures, and pedal markings. The following section briefly describes some of these symbols, for users unfamiliar with music notation.

- **Notes:** A musical note has several parts, including the note head and stem. The note head (the round part of the note) indicates the note's duration (how long the note lasts). Notes of shorter duration (shorter than a quarter note) have flags, and sometimes these notes are joined together by beams. Each note shown below is half as long as the note to its left (from left to right, the notes are: whole note, half note, quarter note, and eighth note).



- **Rests:** When reading music while playing, it is as important to know the space between notes as the notes themselves. The silences between notes are shown by rests. Rests, like notes, have different symbols for different lengths of time, and shorter rests use flags.

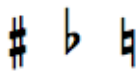
Each rest shown below is half as long as the rest to its left (from left to right, the rests are half rest, quarter rest, eighth rest, and sixteenth rest).



- **Staves:** The set of five horizontal lines on which the notes appear is called a *staff* (the plural is *staves*). The lines of the staff let you see the pitch of the notes from high to low, like a grid. In notation view, GarageBand always shows two staves, similar to piano notation. This shows a range of three octaves with middle C in the center (between the two staves). Most instruments and voices except the lowest bass instruments fall in this range.
- **Clefs:** The symbol at the left edge of each staff is called a *clef*. Clefs indicate the range of notes the lines of the staff display. The staves in notation view use the two most common clefs, the treble and bass clef.



- **Key signs:** If the project is in a key other than C, the sharps or flats in the key appear between the clef and the time signature. Sharps are raised a semitone above the natural note (so, for instance, C# is a semitone higher than C), and flats are lowered a semitone (so Bb is a semitone lower than B). The symbols for sharps and flats are shown below, followed by the “natural” symbol that cancels a sharp or flat.



- **Bar lines:** The vertical lines extending through both staves show the beginning of each measure (measures are also called *bars*).

In addition to standard music notation symbols, notation view includes the following features to make working easier:

- **Duration bars:** In addition to the musical note itself, each note has a duration bar that graphically displays the note's duration (the amount of time the note lasts).
- **Beat guides:** In notation view, the beat ruler not only shows measures and beats, but also includes *beat guides*. Beat guides help you see the exact position of notes in time. A beat guide appears as a small gray circle or dot above each note; when you move a note, the beat guide moves with it to indicate the note's position.

**To view a Software Instrument region in notation view:**

- 1 In the timeline, select a Software Instrument region.
- 2 Click the Notation View button (the musical note icon) in the lower-right corner of the editor's Region area.



In music notation, the position of notes is shown in terms of musical values (note values). When you play music, you may play some notes slightly off the beat (ahead of the beat or behind the beat) to achieve different types of feeling. These small differences are not shown in musical notation.

In notation view, GarageBand shows the position of notes “rounded” to the nearest note value. You can choose the note value to round the display of notes to from the timeline grid menu at the upper-right corner of the editor. This does not change how the note plays; it only changes the display, so that notes slightly out of time are shown at the intended position.

**To choose the note value for notation view:**

- Click the Grid button in the upper-right corner of the editor, then choose a note value from the timeline grid menu.

## Editing Notes in Notation View

You can edit notes and controller information for a Software Instrument region in notation view, just as you can in graphic view. You can:

- Add notes
- Select notes
- Move notes in time
- Cut and copy notes
- Change the pitch of notes
- Change the duration of notes

- Change the velocity of notes
- Add pedal markings to sustain notes

## Adding Notes

You add a note by choosing the note value for the note, then clicking in the editor.



In notation view, a square Note Value button appears at the upper-right corner of the Advanced area of the editor. The Note Value button displays a musical note showing the current note value.

### To choose a note value:

- Click the Note Value button, then choose the note value you want from the menu that appears.

### To add a note:

- In the editor, Command-click at the point you want to add the note.

## Selecting Notes

Before editing notes in notation view, you must first select them.

### To select a note:

- Click the note head (the round part of the note). You can select multiple notes by Shift-clicking or by dragging around the notes to enclose them.

## Moving Notes

You can move notes in time in notation view, in the same way as in the editor's graphic view.

### To move a note in time:

- Select the note, then drag it left or right. You can also move selected notes by pressing the Left or Right Arrow keys.

Above each note in the beat ruler is a beat guide. As you move a note, the beat guide moves to help you see the note's exact position in time.

## Copying Notes

You can copy notes in notation view.

### To copy a note:

- Option-drag the note head to a new position.

## Changing the Pitch of Notes

You can change the pitch of, or *transpose*, notes in notation view.

### To change the pitch of a note:

- Select the note, then drag it up or down. You can also change the pitch of selected notes by pressing the Up or Down Arrow keys.

You hear the note's new pitch as it moves.

## Changing the Duration of Notes

When you select a note, a duration bar for the note appears. You can change the note's duration (how long the note lasts) using the duration bar.

### To change the duration of a note:

- 1 Select the note.
- 2 Drag the right edge of the duration bar left (to shorten the note) or right (to lengthen the note). Duration bars work just like the notes in graphic view.

## Deleting Notes

You can delete notes that you no longer want to include in your project.

### To delete a note:

- Select the note, then press the Delete key.

## Changing Note Velocity

For many Software Instruments, the sound changes depending on the note's velocity. You can change the velocity of notes in notation view, in the same way as in graphic view.

### To change a note's velocity:

- Select the note, then drag the Velocity slider left (to lower the velocity) or right (to raise the velocity). You can also change a selected note's velocity by holding down the Command key and dragging the note up or down.

## Adding Pedal Down and Pedal Up Symbols

Music notation for piano and some other instruments includes symbols for the sustain pedal. When the sustain pedal is down, the instrument sustains all notes until the pedal is released (up). You can add pedal down and pedal up symbols, which control whether the notes are sustained in GarageBand.

When you add pedal symbols, you can either place the pedal up symbol manually, or have GarageBand place the pedal up symbol automatically.

**To add pedal symbols and place the pedal up symbol manually:**

- 1 Click the Note Value button and choose the pedal symbol from the menu.
- 2 Hold down the Command key and place the pointer in the editor at the point where you want the pedal down marker.
- 3 Press the mouse button.

The pedal down symbol appears at the current position of the pointer.



- 4 Without releasing the mouse button, drag to the point where you want the pedal up marker.
- 5 Release the mouse button.

The pedal up symbol appears at the current position of the pointer.



**To add pedal symbols with the pedal up symbol placed automatically:**

- 1 Click the Note Value button and choose the pedal symbol from the menu.
- 2 Hold down the Command key and place the pointer in the editor at the point where you want the pedal down marker.
- 3 Press the mouse button.

The pedal down symbol appears at the current position of the pointer.



- 4 Release the mouse button.

The pedal up symbol appears at the next sixteenth note after the pedal down symbol. You can move it to a new position.

**To move the pedal up symbol:**

- 1 Click the pedal symbol to select it.

The pedal down and pedal up symbols become green, indicating that they are selected.

- 2 Drag the pedal up symbol to its new position, then release the mouse button.

GarageBand puts a complete recording studio on your desktop, so you can mix your projects and add professional-sounding effects.

In this lesson, you'll learn some basics about mixing and effects, and learn how to:

- Set track volume levels and pan position
- Add dynamic changes using volume and pan curves
- Set the output (master) volume
- Add fade ins and fade outs to the master track
- Transpose parts of a project to different keys
- Add and adjust track effects
- Turn effects on and off
- Edit and save effect presets

## What Is Mixing?

When you've built the arrangement of your project, the next step is to *mix* the project. Mixing is where you step back and listen to the overall sound of the music, and make changes to tracks and the project to balance the different parts, bring the music into focus, and give it the right "sound."

Mixing typically consists of the following steps:

- Balancing volume levels
- Setting pan positions
- Creating dynamic changes with volume and pan curves
- Shaping the music with effects



## Setting Track Volume Levels

The instruments and loops you use in your project may have different volume (loudness) levels. In order to hear all the parts you've added, you balance the volume levels so that no track overwhelms the others, and no track is lost in the mix.

This doesn't mean that every track should be set to the same volume level. In commercial mixes, certain tracks (typically the lead vocals, drums, and lead or solo instruments) are louder, while other tracks (the backing instruments and vocals) are softer.

### To set track volume levels:

- For each track, drag the volume slider left to lower the volume level, or drag it right to raise the volume level.

## Setting Track Pan Position

Setting different tracks to different positions in the stereo field (panning) helps make it easier to distinguish each track in the mix, and create a sense of three-dimensional space to your project.

In commercial music, the most important tracks (typically the lead vocals, drums, and lead or solo instruments) are panned to the center or close to center, while other tracks (the backing instruments and vocals) are panned left and right. Panning tracks no farther than 50 percent left or right creates a natural sense of space, while panning tracks to the extreme left or right creates a more unusual, artificial sound.

### To set track pan positions:

- For each track, drag the pan dial left to pan the track farther to the left, or drag it right to pan the track farther to the right. You can also click along the edge of the dial to set it to a specific position.

## Using Volume and Pan Curves

In addition to setting track volume and pan, you can add volume and pan changes over time using volume curves and pan curves. Making changes over time is called *automation*, and GarageBand lets you automate volume and pan changes for each track.

### To turn on a track's volume or pan curve:

- 1 Click the triangle to the right of the Solo button in the track's header.  
A blank row for the track's volume and pan curves appears below the track.
- 2 From the pop-up menu on the left side of the row, choose Track Volume or Track Pan.

Once you turn on a track's volume or pan curve, you make changes by adding control points to the curve, then dragging the control points to change the value for volume or pan at that point in time.

**To add a control point:**

- Click the line in the editor at the point in time where you want to add a control point.

**To adjust a control point, do one of the following:**

- Drag the control point up or down to a new value.
- Drag the control point left or right to move it to a different point in time.

You can use the vertical lines in the row to line control points up with measures and beats in the timeline.

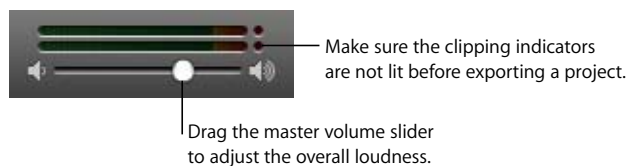
## Setting the Output Volume

You can set the output volume of a project using the master volume slider, located below the lower-right corner of the timeline. You should adjust the output volume to a level high enough to eliminate background noise, but not high enough to cause clipping.

The master volume slider controls the volume of the project when it is exported. Use your computer's volume control to adjust the volume at which you listen to the project play.

**To set the master volume:**

- Drag the master volume slider left to lower the output volume, or right to raise the output volume. Option-click the slider to return it to a neutral value (0 dB gain).
- As the project plays, watch the master level meters located above the master volume slider. Before you export a project, make sure the small red dots to the right of the level meters are not lit. These dots (called *clipping indicators*) light to show that the volume level of the project at some point is too high, which will cause distortion or "clipping" in the exported project.



## Adding Fade Ins and Fade Outs

A very common mixing technique is to add a fade in at the beginning of a project, and a fade out at the end of the project. Fade ins make the music seem to “come out of nowhere,” and fade outs create the feeling that the project continues playing. You can easily add fade ins and fade outs to your projects, and add other volume changes to the project over time.

### To add a fade in:

- 1 Choose Track > Show Master Track.  
The master track appears at the bottom of the timeline.
- 2 From the pop-up menu in the master track’s header, choose Master Volume.  
The master volume curve appears in the master track.
- 3 Click the master volume curve at the point you want the fade in to end.
- 4 Drag the control point at the beginning of the master track down to the volume level at which you want the fade in to start. To start with complete silence, drag it all the way down.

Now play the project from the beginning. You’ll hear all the tracks in the project fade in gradually to their final volume level.

### To add a fade out:

- 1 Choose Track > Show Master Track.  
The master track appears at the bottom of the timeline.
- 2 From the pop-up menu in the master track’s header, choose Master Volume.  
The master volume curve appears in the master track.
- 3 Click the master volume curve at the point you want the fade out to begin, then click at the point you want the fade out to end.
- 4 Drag the second control point down to the volume level at which you want the fade out to end. To end with complete silence, drag it all the way down.

Now play the project from a point before the fade out begins. You’ll hear all the tracks in the project fade out gradually to their final volume level.

## Transposing Part of a Project to a Different Key

Many projects move to different keys at some point in the project; they may stay in the new key, or return to the original key at a later point in time. You can move an entire project to a new key, called *transposing* (or *modulating*), in the project’s master track.

### To transpose part of a project to a different key:

- 1 Choose Track > Show Master Track.  
The master track appears at the bottom of the timeline.
- 2 From the pop-up menu in the master track's header, choose Master Pitch.  
The master pitch curve appears in the master track.
- 3 Click the box to the left of the words "Master Pitch" to turn on the master pitch curve.
- 4 Click the master pitch curve at the point you want to change the pitch of the project.
- 5 Drag the control point up or down to the new key. Unlike with volume and pan curves, the control points on the master pitch curve move in discrete steps of a semitone.

**Note:** When you transpose a project to a new key, Real and Software Instruments (both those you've recorded and loops) are transposed. Any audio files added from the Finder are not transposed.

## Using Effects

Effects let you shape and enhance the sound of your music in a variety of ways. Anyone who's listened to popular music on the radio, or listened to the soundtrack of a movie, has heard the different effects used in contemporary music. GarageBand includes a complete set of studio-quality effects that you can use on individual tracks or the overall project to shape the sound of your music.

### Types of Effects

GarageBand includes the following types of effects:

**Equalization (EQ):** EQ is a powerful and versatile effect that lets you change the level of selected frequencies. You can use EQ to make both subtle and dramatic changes to your projects. EQ is likely the most commonly used effect in popular music.

**Dynamics:** Dynamics effects, which include compressors and noise gates, let you control the volume of your music over time.

**Reverb and Echo:** Reverb and echo are both time-based effects. Time-based effects store a copy of the sound and play it back at a later point in time, creating a sense of space.

**Modulation:** Modulation effects, which include chorus, flangers, and phasers, build on the time-based effects by shifting or modulating when the copied signal plays back. They can also involve detuning the copied signal relative to the original.

**Distortion:** Distortion effects, which include amp simulation and overdrive (and, of course, distortion!), change the tone of the original sound to recreate analog or digital distortion.

**Other effects:** Other effects included with GarageBand, such as tremolo and Auto Filter, change the sound in different ways.

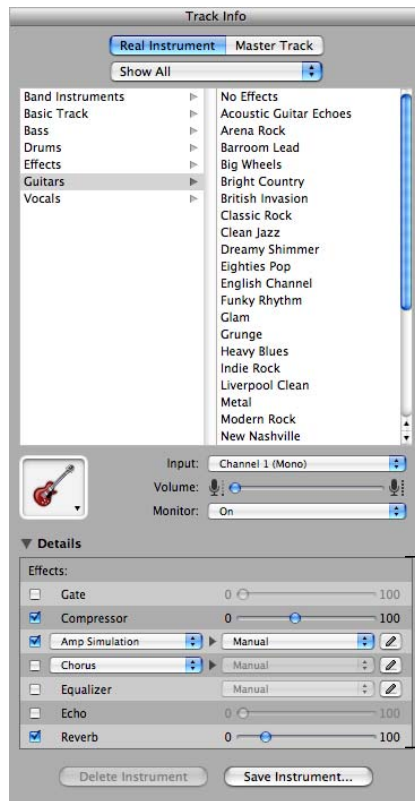
## Adding Effects

Each Real and Software Instrument track has a set of effects, which include a compressor, equalizer (EQ), echo, and reverb. You can adjust a track's effects, and add up to two additional effects, in the Track Info pane. Real Instrument tracks also include a noise gate effect.

The master track includes its own effects. You can adjust the master effects and add one additional effect to the master track in the Track Info pane.

### To add an effect:

- 1 Click the Track Info button (the letter “i”) or choose Track > Show Track Info to show the Track Info pane.
- 2 If needed, click the Details triangle to show the Effects section of the window.
- 3 Choose the effect you want to add from one of the pop-up menus along the left. Instrument tracks have two effect pop-up menus, and the master track has one.



## Adjusting Effects

Each effect has either a slider that you can use to adjust the amount of the effect, or a pop-up menu from which you can choose different effect presets.

### To adjust a track's effects:

- 1 Select the track, then click the Track Info button to open the Track Info pane.
- 2 Click the Details triangle to reveal the track's effects settings.
- 3 Drag the sliders for the Gate, Compressor, Echo, and Reverb effects to adjust the amount of each effect. Choose a new setting from the Equalizer pop-up menu to adjust the equalization. If your project is playing, you hear the changes in real time.
- 4 Choose an effect from one of the effect pop-up menus on the left, then choose an effect setting for the effect from the preset pop-up menu on the right.

Additional effects you can add include treble reduction, bass reduction, amp simulation, chorus, flanging, phase shifting, and tremolo.

## Turning Effects On and Off

You can turn individual effects on or off (turning an effect off temporarily is called *bypassing* the effect). This has several advantages: It lets you hear how each effect changes the sound of your music, and lets you see which effects have the greatest impact on your computer's performance.

When you turn off an effect, the effect's current settings are retained, so any adjustments you have made are not lost.

### To turn an effect off:

- In the Effects section of the Track Info pane, deselect the checkbox next to the effect. Select the checkbox to turn the effect on again.

## Choosing Effect Presets

Some effects includes several presets, which let you easily adjust the effect's settings to achieve a particular sound.

### To choose an effect preset:

- Choose the preset you want from the pop-up menu to the right of the effect.

## Editing Effect Presets

You can adjust effect presets to fine tune the sound of the effect, and save your own presets to use with other instruments or in another project.

### To edit an effect preset:

- 1 Click the Edit button (with the pencil icon) to the right of the effect's preset pop-up menu.

The effect's Preset window appears. Each preset setting has a slider, button, or other control, which is labeled to indicate its purpose.

- 2 Drag the sliders in the Preset window to adjust the settings for the preset.

When you adjust an effect preset, it appears as "Manual" in the pop-up menu, so you know you've changed it from the original preset. You can go back and forth between your Manual settings and other presets to compare them before saving the new preset.

## Saving Effect Presets

You can create your own effect presets and save them to use on another track or in another project.

### To save an effect preset:

- 1 Adjust the settings for the preset to get the sound that you want.
- 2 Choose Make Preset from the pop-up menu, then type a name for the preset in the Save dialog.

## You can create podcasts in GarageBand, then send them to iWeb to publish over the Internet.

Podcasts are like radio or TV shows that people can download over the Internet. Users can download an individual podcast *episode* or subscribe to a podcast *series*. You can create podcast episodes in GarageBand, then publish them on the Internet using iWeb or another application.

There are several types of podcast you can create in GarageBand:

- *Audio podcast episodes* contain an audio file.
- *Enhanced podcast episodes* contain audio along with markers, artwork, and URLs.
- *Video podcast episodes* contain a movie and can also contain audio.
- *Enhanced video podcast episodes* contain a movie along with audio, markers, and URLs.

In this lesson, you'll learn how to:

- Find, preview, and import iTunes songs and GarageBand projects using the Media Browser
- Duck backing tracks to make narration and dialogue easier to hear
- Show the podcast track
- Add and edit markers and marker regions
- Add artwork, URLs, URL titles, and chapter titles to markers
- Add episode artwork and episode information
- Edit marker region and episode artwork
- Send a podcast to iWeb
- Export a podcast episode



## Creating a Podcast Episode

You can create an enhanced podcast episode in GarageBand using the following steps:

- 1 Create the podcast audio by recording and adding audio in GarageBand.
- 2 Apply ducking to backing tracks.
- 3 Show the podcast track.
- 4 Add and edit marker regions.
- 5 Add artwork and/or URLs to marker regions.
- 6 Add episode artwork.
- 7 Edit episode information.

When you have created your podcast in GarageBand, you can send it to iWeb or export it and publish it using another application.

## Creating the Podcast Audio

You can create podcasts with only spoken narration or dialog, or add musical backing tracks, sound effects, and other sounds. You record narration by connecting a microphone to your computer (or using your computer's built-in microphone, if it has one), enabling a Real Instrument track for recording, then recording from the microphone to the Real Instrument track, as described in "Working With Real Instruments" on page 47.

You can add Apple Loops and record Real and Software Instruments to use as backing tracks for your podcast. The loop browser includes a variety of loops created for use in your podcasts. For information about working with Apple Loops, see "Using Apple Loops" on page 32. For information about recording Real Instruments, see "Working With Real Instruments" on page 47. For information about recording Software Instruments, see "Working With Software Instruments" on page 55.

You can add and adjust effects, including the Speech Enhancer effect, which is especially useful for recorded narration and dialogue.

You can also import songs from your iTunes library and import other GarageBand projects that have been saved with an iLife preview into your podcast. You can find and preview iTunes songs and GarageBand projects in the Media Browser.

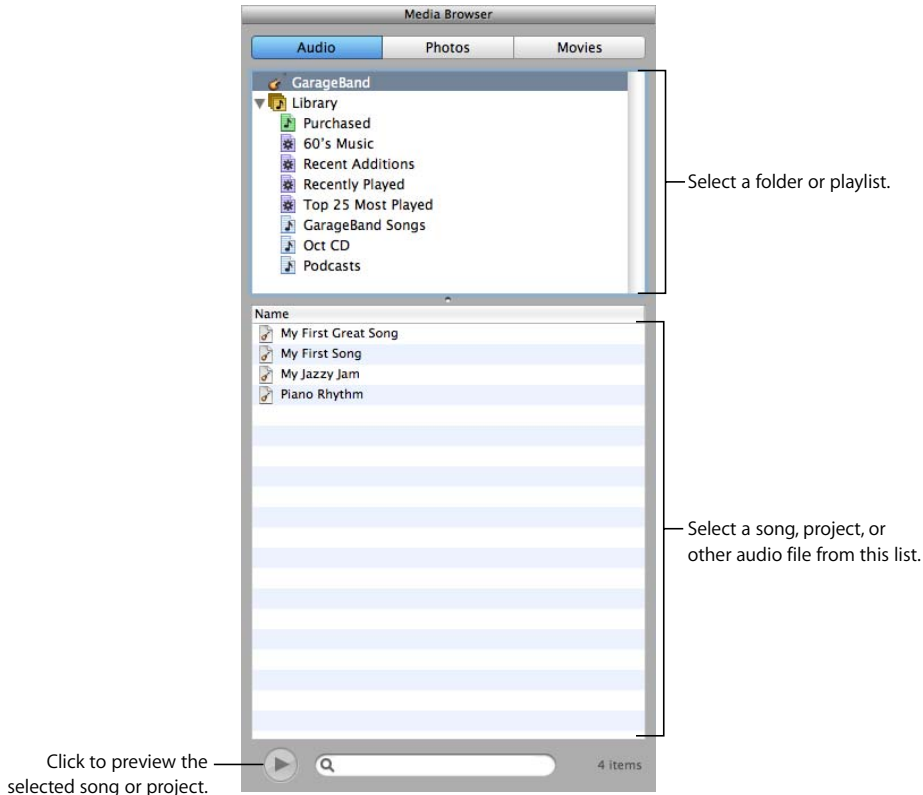
### To find audio files in the Media Browser:

- 1 Choose Control > Media Browser.  
The Media Browser opens to the right of the timeline.
- 2 Click the Audio button.
- 3 In the file area, navigate to the folder containing the audio files you want to use. You can also search for files by name by typing in the search field.

**To preview an audio file in the Media Browser, do one of the following:**

- Select the file in the media list, then click the Play button at the bottom of the Media Browser.
- Double-click the file in the media list.

The audio file starts playing.



**To stop preview playback, do one of the following:**

- Click the Play button at the bottom of the Media Browser.
- Select another audio file.

**To import an audio file:**

- Drag the audio file from the Media Browser to the timeline.

You can add other folders to the Media Browser so you can add media files in the folders to your projects.

**To add a folder to the Media Browser:**

- Drag the folder from the Finder to the middle area of the Media Browser.

## Ducking Backing Tracks

When you are creating a podcast, you may sometimes want to lower the volume of backing tracks to hear spoken narration or dialogue more easily. Lowering the volume of some tracks to make others easier to hear is called “ducking.”

You apply ducking by setting which tracks are lead tracks and which are backing tracks. Whenever there is sound on a lead track, the volume of the backing tracks is lowered while the volume of all other tracks stays the same. You can apply ducking to any Real or Software Instrument track in your podcast.

### To make a track a lead track:

- 1 Choose Control > Ducking.

A ducking control appears in each track’s header, with arrows pointing up and down.

- 2 Click the upper part of the track’s ducking control (the arrow pointing up).

### To make a track a backing track:

- 1 Choose Control > Ducking.

A ducking control appears in each track’s header, with arrows pointing up and down.

- 2 Click the lower part of the track’s ducking control (the arrow pointing down).

When you play the project, send it to iWeb, or export it, the backing tracks are ducked whenever there is sound on any lead track. You can adjust the amount of ducking (volume reduction) on these tracks using the Ducking Amount slider.

### To adjust the amount of ducking:

- 1 Open the Track Info pane.
- 2 Click Master Track, then click the Details triangle.
- 3 Drag the Ducking Amount slider right to increase the amount of ducking, or drag it left to decrease it.

## Adding and Editing Markers

You can add markers to an podcast, making it an *enhanced* podcast. When you add a marker to a podcast, it appears in the podcast track as a marker region. Marker regions show how long the artwork or URLs you add to a marker last, and you can move them or resize them to change their duration.

### To show the podcast track:

- Choose Track > Show Podcast Track.

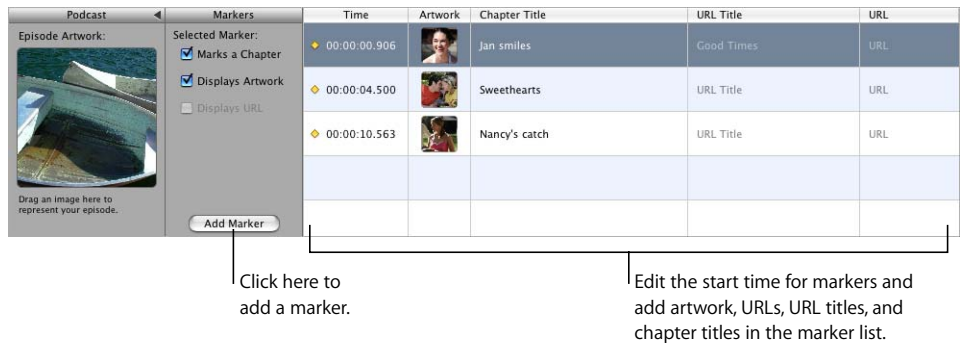
The podcast track appears above the other tracks in the timeline, and the editor opens showing the marker list, with columns for the start time, artwork, chapter title, URL title, and URL for each marker.

**Note:** A project can have either a podcast track or a video track, but not both. If you try to show the podcast track for a project that contains a video track, a dialog appears asking if you want to replace the video track with a podcast track.

**To add a marker:**

- 1 Move the playhead to the place where you want to add the marker.
- 2 Click the Add Marker button.

The marker appears in the editor, and the start time for the marker appears in the Time column in the marker's row. The marker also appears as a marker region in the podcast track. You can edit marker regions just like other regions in the timeline to control when artwork and URLs appear and how long they are visible when you play the podcast.



**To move a marker region, do one of the following:**

- In the podcast track, drag the marker region to a new position.
- In the editor, click the start time for the marker region and enter a new start time.

**To resize a marker region:**

- Drag either the left or right edge of the marker region to the point where you want to resize it.

You can't loop a marker region.

### Adding Marker Region Artwork

You can add artwork to individual marker regions. When you play the podcast, the marker region artwork appears from the start to the end of the marker region.

**To add artwork to a marker region:**

- 1 Open the Media Browser, then click the Photos button.
- 2 In the Media Browser, locate the artwork you want to add.

- 3 Drag the artwork from the Media Browser to the Artwork box in the marker's row in the editor. You can also drag artwork directly to the podcast track, which adds a new marker region with the artwork.

The artwork appears in the marker region in the podcast track and in the Artwork column for the region in the editor. The Displays Artwork checkbox is selected. You can change the artwork for a marker by dragging a new image to the Artwork column in the marker's row.

### Adding a URL to a Marker

You can add a URL to a marker and give the URL a title. When you play the podcast, the URL is visible from the start to the end of the marker region. When you click the URL, your web browser opens and displays the webpage for the URL.

#### To add a URL to a marker:

- 1 In the editor, click the placeholder text in the URL column of the marker's row, then type the URL.

The Displays URL checkbox is selected for the marker.

- 2 In the editor, click the placeholder text in the URL Title column of the marker's row, then type the title.

When you add a URL title, the title appears in place of the actual URL when you play the podcast, but clicking the title opens your web browser to the webpage for the URL.

### Adding Chapter Titles

You can add a chapter title to a marker, making it a chapter marker. When you play the movie in iTunes, iDVD, or QuickTime Player, you can easily move back and forth between chapters.

#### To add a chapter title to a marker:

- In the editor, select the placeholder text in the Chapter Title column of the marker's row, then type a title.

### Deleting Markers

You can delete a marker if you decide you no longer want it in your podcast.

#### To delete a marker, do one of the following:

- In the podcast track, select the marker region, then press the Delete key.
- In the editor, select the marker in the marker list, then press the Delete key.

## Adding Episode Artwork

You can add episode artwork to the podcast track. When you play the podcast in iTunes or view it in iWeb, the episode artwork is visible whenever there is no marker region with its own artwork.

### To add episode artwork:

- 1 In the Media Browser, locate the artwork you want to add.
- 2 Drag the artwork from the Media Browser to the Episode Artwork well in the editor.  
The episode artwork appears in the Episode Artwork well. When you play the podcast, the episode artwork appears when there is no marker region with artwork.

## Editing Artwork

You can resize and crop both marker region and episode artwork. In the image editor, you can resize and crop your artwork to show all or part of the original image.

### To edit artwork:

- 1 Double-click artwork in either the Episode Artwork well or the marker list.  
The image editor opens, showing the artwork.
- 2 Drag the size slider to resize the artwork as large or small as you want. The black square shows what part of the artwork will be displayed when you play the podcast.
- 3 Drag the artwork so that the part you want to display is within the borders of the square.
- 4 You can replace the artwork by dragging a new image to the image editor.
- 5 When you are finished, click Set.

## Editing Episode Information

Each podcast episode can contain information, including the episode title, author, and description. An episode can also have a parental advisory, which appears when you play the podcast in iTunes.

### To edit episode information:

- 1 Select the podcast track.
- 2 Open the Track Info pane by choosing Track > Show Track Info.  
The Track Info pane appears, showing the Episode Info pane.
- 3 To give the podcast episode a title, click the Title field, then type a title.
- 4 To add artist information, click the Artist field, then type the artist's name.
- 5 Choose a parental advisory from the Parental Advisory pop-up menu. The choices are "none," "clean," and "explicit." The default is "none."
- 6 To include a description of the podcast episode, click the Description field, then type a description.

## Creating a Video Podcast Episode

Creating a video podcast is similar to creating an audio podcast, except that the video podcast includes a video file and does not include artwork. You can create an enhanced video podcast episode in GarageBand using the following steps:

- 1 Send an iMovie project to GarageBand or import a video file from the Media Browser.
- 2 Create the podcast audio in GarageBand.
- 3 Apply ducking to backing tracks.
- 4 Add and edit marker regions.
- 5 Add URLs and chapter titles.
- 6 Edit episode information.

You create the podcast audio using the same steps described in “Creating a Podcast Episode” on page 81. For information about sending an iMovie project to GarageBand, importing a video file, and working with video in a GarageBand project, see “Creating a Musical Score for an iMovie or Video” on page 88.

When you have created your video podcast in GarageBand, you can send it to iWeb or export it and publish it using another application.

## Sending a Podcast to iWeb

You can send a podcast to iWeb, where you can publish it as part of a series.

### To send a podcast to iWeb:

- Choose Share > Send Podcast to iWeb.

The entire project, from the beginning to the end of the last region, is exported.

## Exporting a Podcast Episode

You can export a project as a podcast episode, and publish it using another podcasting application. By default, the Share menu lets you export podcasts to iWeb. If you want to export podcasts using another application, you can change the menu command to let you save your podcast episode to disk.

### To export a project as a podcast episode:

- 1 Choose GarageBand > Preferences, then click Export.
- 2 In the Export pane, select the “Save to Disk” button under Publish Podcast.
- 3 Close the Preferences window.
- 4 Choose Share > Export as Podcast.

The file is exported using the current video and audio compression settings.

## GarageBand makes it easy to create music for your iMovie projects and other video files.

You can work with an iMovie project or other QuickTime-compatible video file in a GarageBand project, view the video as you create the score, add and edit markers, and send the finished movie (containing both video and audio) to iDVD to burn to a DVD or send it to iWeb to publish as a video podcast. You can also export it as a QuickTime movie.

In this lesson, you'll learn how to:

- Send an iMovie project to GarageBand
- Find and preview video files in the Media Browser
- Import a video file into a project
- View the video as you work
- Edit the video's audio track
- Add and edit markers
- Add URLs, URL titles, and chapter titles to markers
- Add episode information
- Send a movie to iDVD
- Export a movie as a QuickTime movie

## Sending an iMovie Project to GarageBand

You can send an iMovie project from iMovie to GarageBand. When you send an iMovie project, GarageBand opens and a new project is created that contains the iMovie project. If GarageBand is already open, the current project closes before the new project is created.

**To send an iMovie project from iMovie to GarageBand:**

- In iMovie, choose Share > GarageBand.



## Importing a Video File From the Media Browser

You can import an iMovie project or other video file from the Media Browser. The Media Browser lets you quickly locate iMovie projects and other video files in your computer's Movies folder, as well as other media files. You can search for files by name, and preview video files before you add them to your GarageBand project.

### To open the Media Browser, do one of the following:

- Choose Control > Show Media Browser.
- Click the Media Browser button (next to the Track Info button).

The Media Browser contains buttons for different types of media files, a browser where you can navigate to the media files you want to use, and a media list showing the media files in the current location. You can preview movies in the Media Browser to find the one you want to work with in GarageBand. Once you find the movie you want to work with, you drag it to the timeline to import it into the project.

### To find video files using the Media Browser:

- 1 Click the Movies button.
- 2 Navigate to the folder containing the movie you want to use.
- 3 Optionally, you can also search for movies by name by typing in the search field.

### To preview a video file in the Media Browser, do one of the following:

- Select the file in the media list, then click the Play button at the bottom of the Media Browser.
- Double-click the file in the media list.

The movie icon becomes a small preview of the movie.

### To stop preview playback, do one of the following:

- Click the Play button at the bottom of the Media Browser.
- Select another video file.

### To import a video file:

- Drag the video file from the Media Browser to the timeline.

The video file appears in the video track, beginning at the start of the project. You can't change the position of the video in a project.

**Note:** A project can contain only one video file. If you import a video file into a project that already contains one, a dialog appears asking if you want to replace the existing video with the new one.

The Media Browser shows the movies in your Movies folder. You can add other folders to the Media Browser so you can add media files in the folders to your projects.

### To add a folder to the Media Browser:

- Drag the folder from the Finder to the middle area of the Media Browser.

## Viewing the Video

When you import a video file into a project, the video track appears at the top of the timeline, showing still frames from the video file. The Track Info pane appears in place of the Media Browser, with a video preview at the top where you can view the video as you play the project.

### To show the video track and video preview:

- Choose Track > Show Video Track.

### To hide the video track and video preview:

- Choose Track > Hide Video Track.

## Working With the Video's Audio Track

If the video contains an audio track, a new Real Instrument track named Video Sound is created below the video track for the video's audio. You can edit the Video Sound track exactly like any Real Instrument track: You can mute or solo it, adjust the volume level and pan position, and add effects.

**Note:** If you mute the Video Sound track, the video's audio will not be included when you send the movie to iDVD or iWeb or when you export as a QuickTime movie.

## Adding and Editing Markers

You can add markers to a project, and then add URLs and chapter titles to markers. Markers make it easy to navigate to different parts of the finished movie, and let you add links to webpages. You can add and edit markers in the editor.

### To show marker information in the editor:

- Select the video track, then choose Control > Show Editor or click the Editor button.

The editor opens. In marker view, the editor contains the marker list, with columns showing the start time, still video frame, and chapter title for each marker.

### To add a marker:

- 1 Move the playhead to the place where you want to add the marker.
- 2 Click the Add Marker button at the bottom of the editor.

In the editor, the time position where you added the marker appears in the Time column, and the frame of the video at that position appears in the Still Frame column.

## Adding a URL to a Marker

You can add a URL to a marker and give the URL a title. When you play the movie in iTunes, iDVD, or QuickTime Player, the URL appears until the start point of the next marker. When a user clicks the URL, their web browser opens to the webpage for the URL.

### To add a URL to a marker:

- 1 In the editor, click the placeholder text in the URL column of the marker's row, then type the URL.

The Displays URL checkbox is selected for the marker.

- 2 In the editor, click the placeholder text in the URL Title column of the marker's row, then type the title.

When you add a URL title, the title appears in place of the actual URL when you play the movie, but clicking the title opens your web browser to the webpage for the URL.

## Adding a Chapter Title

You can add a chapter title to a marker, making it a chapter marker. When you play the movie in iTunes, iDVD, or QuickTime Player, you can move back and forth between chapters.

### To add a chapter title to a marker:

- In the editor, select the placeholder text in the Chapter Title column of the marker's row, then type a new title.

In the time ruler, a yellow diamond appears at the marker's start position. In the editor, the Marks a Chapter checkbox is selected.

## Sending a Movie to iDVD

You can send the project containing both video and audio to iDVD so you can burn it to a DVD disc. Viewers watching the DVD can use the chapter markers in the project to move to different parts of the movie. URLs and URL titles will not appear in the movie on DVD.

### To send a movie to iDVD:

- Choose Share > Send Movie to iDVD.

**Note:** When you send a project to iDVD, no video compression is applied to the project. In most cases, you'll want to make these changes in iDVD.

## Sending a Video Podcast to iWeb

You can send a project containing a video to iWeb as a video podcast, and publish it on the Internet. When subscribers view the video podcast, they can click a URL to have a relevant webpage appear in their web browser, and move back and forth between chapters. For information about creating video podcasts, see “Creating Podcasts in GarageBand” on page 80. For information about exporting video podcasts, see “Sending a Podcast to iWeb” on page 87.

## Exporting a Project as a QuickTime Movie

You can export a project containing a video as a QuickTime movie (.mov). When you export a project as a movie, the exported movie includes both the video and the soundtrack you created in GarageBand. The video’s audio is also included unless the Video Sound track is muted when you export the movie.

### To export a project as a QuickTime movie:

- Choose Share > Export as QuickTime Movie.

The project is exported using the current movie compression settings. Movie compression settings compress both the video and audio in the exported movie. You can change the compression settings to suit how you want to use the exported movie. Compression settings are stored as part of the GarageBand project until you change them while the project is open.

### To choose the video compression settings:

- 1 Choose GarageBand > Preferences, then click Export.
- 2 In the Export pane, choose the settings you want to use from the Movie Settings pop-up menu.

# Keyboard Shortcuts

# A

Action	Shortcut
<b>Navigation/Moving the playhead</b>	
Play/Pause	Space bar
Go to beginning	Home or Z
Go to end	End or Option-Z
Move back by one measure	Left Arrow
Move forward by one measure	Right Arrow
Move back by the visible width of the timeline	Page Up
Move forward by the visible width of the timeline	Page Down
Zoom out	Control-Left Arrow
Zoom in	Control-Right Arrow
<b>Tracks</b>	
Create new track	Command-Option-N
Duplicate track	Command-D
Delete selected track	Command-Delete
Select next higher track	Up Arrow
Select next lower track	Down Arrow
Mute/Unmute selected track	M
Solo/Unsolo selected track	S
Show/Hide track volume curve	A
Show/Hide master track	Command-B
Show/Hide podcast track	Command-Shift-B
Show/Hide video track	Command-Option-B
<b>Track Info pane</b>	
Show/Hide Track Info	Command-I
Select next higher category or instrument	Up Arrow (when Track Info pane is open and either a category or an instrument is selected)

Action	Shortcut
Select next lower category or instrument	Down Arrow (when Track Info pane is open and either a category or an instrument is selected)
Move from instrument column to category column	Left Arrow (when Track Info pane is open and an instrument is selected)
Move from category column to instrument column	Right Arrow (when Track Info pane is open and a category is selected)
<b>Editing and arranging</b>	
Undo	Command-Z
Redo	Command-Shift-Z
Cut	Command-X
Copy	Command-C
Paste	Command-V
Delete	Delete
Select all	Command-A
Split region	Command-T
Join selected regions	Command-J
Snap to grid	Command-G
Enable/disable ducking	Command-Shift-F
<b>Recording</b>	
Record Start/Stop	R
Turn cycle region on/off	C
Turn metronome on/off	Command-U
Turn count in on/off	Command-Shift-U
Show/Hide instrument tuner	Command-F
<b>Notation view</b>	
Move selected notes to previous grid position	Left Arrow
Move selected notes to next grid position	Right Arrow
Move selected notes back one measure	Shift-Left Arrow
Move selected notes forward one measure	Shift-Right Arrow
Transpose selected notes up a semitone	Up Arrow
Transpose selected notes down a semitone	Down Arrow
Transpose selected notes up an octave	Shift-Up Arrow
Transpose selected notes down an octave	Shift-Down Arrow
<b>Adjusting master volume</b>	

Action	Shortcut
Raise master volume	Command-Up Arrow
Lower master volume	Command-Down Arrow
<b>Showing windows and editors</b>	
Show track mixer	Command-Y
Show Track Info pane	Command-I
Show editor	Command-E
Show Media Browser	Command-R
Show loop browser	Command-L
Show onscreen keyboard	Command-K
Show Musical Typing window	Command-Shift-K
<b>File menu functions</b>	
New	Command-N
Open	Command-O
Close	Command-W
Save	Command-S
Save As	Command-Shift-S
<b>Application menu functions</b>	
Show/Hide GarageBand Preferences	Command-comma (,)
Hide GarageBand	Command-H
Hide other applications	Command-Option-H
Quit GarageBand	Command-Q
<b>Help menu functions</b>	
GarageBand Help	Command-question mark (?)

# Connecting Music Equipment to Your Computer

## B

If you sing or play a musical instrument, you can connect a musical instrument or a microphone to your computer and record your performances in your GarageBand projects.

Each recording appears as a region in a track in the timeline. You can add effects to the track, and edit the region in the editor.

### Connecting a Musical Instrument or Microphone

You can connect an electric musical instrument or microphone to your computer and record it in a Real Instrument track.

You can connect a microphone to your computer using the computer's audio input port, if your computer has one. You can also connect an audio interface to your computer, then connect instruments and microphones to the audio interface for recording. Audio interfaces are available in a variety of compatible formats, including USB, FireWire, PCI, and PC card formats. You can also connect an audio mixer or console to your computer, and record microphones or instruments through the mixer.

If you use an audio interface to connect musical instruments, check the manufacturer's specifications to make sure the interface is compatible with Mac OS X 10.2.6 or later. Also make sure the audio interface uses a format supported by your computer. Follow the manufacturer's instructions, which may include installing the correct driver on your computer.

If you connect an instrument or microphone to your computer's audio input port, open System Preferences, click the button for Sound preferences, click the Input tab in the Sound pane, select Line In in the sound input list, then drag the Input volume slider to set the input level.



## Connecting a Music Keyboard to Your Computer

If you play a keyboard instrument, you can connect a MIDI-compatible music keyboard to your computer to play and record Software Instruments.

### To connect a music keyboard to play Software Instruments:

- If the keyboard is a USB MIDI keyboard, connect the USB cable to the keyboard and to your computer.
- If the keyboard is a standard MIDI keyboard, connect the keyboard to a MIDI interface using standard MIDI cables, and connect the interface to your computer.

Be sure to follow the instructions that came with the keyboard, which may include installing the correct driver on your computer.

### Connecting Other Music Equipment

You may also want to connect speakers or monitors to your computer to hear your projects play back with greater audio quality than possible from your computer's speaker. A variety of monitors and speakers are available, including speakers you can connect directly to your computer's audio out port, through a USB port, or using an audio interface.

If you connect an audio interface to your computer, you set the audio interface as the audio input device for GarageBand. Before setting the audio input device, be sure to install any necessary driver software for the audio interface.

### To set an audio interface as the audio input device:

- 1 Choose GarageBand > Preferences, then click Audio/MIDI.
- 2 In the Audio/MIDI pane, choose the audio interface from the Audio Input pop-up menu.

If you connect a microphone, an instrument, or other audio device directly to your computer's audio input port, you set may need to configure input settings for it in the Sound pane of System Preferences.

### To configure input settings in System Preferences:

- 1 Choose Apple () > System Preferences, then click Sound.
- 2 In the Sound pane, click the Input button.
- 3 Select Line In from the sound input devices list, then drag the Input volume slider to set the input level.

[www.apple.com/garageband](http://www.apple.com/garageband)

© 2006 Apple Computer, Inc. All rights reserved.  
Apple, the Apple logo, iDVD, iLife, iMovie, iPhoto, iPod, iTunes, Macintosh, and QuickTime are trademarks of Apple Computer, Inc., registered in the U.S. and other countries. Finder, GarageBand, and iWeb are trademarks of Apple Computer, Inc.  
019-0541 01/2006