



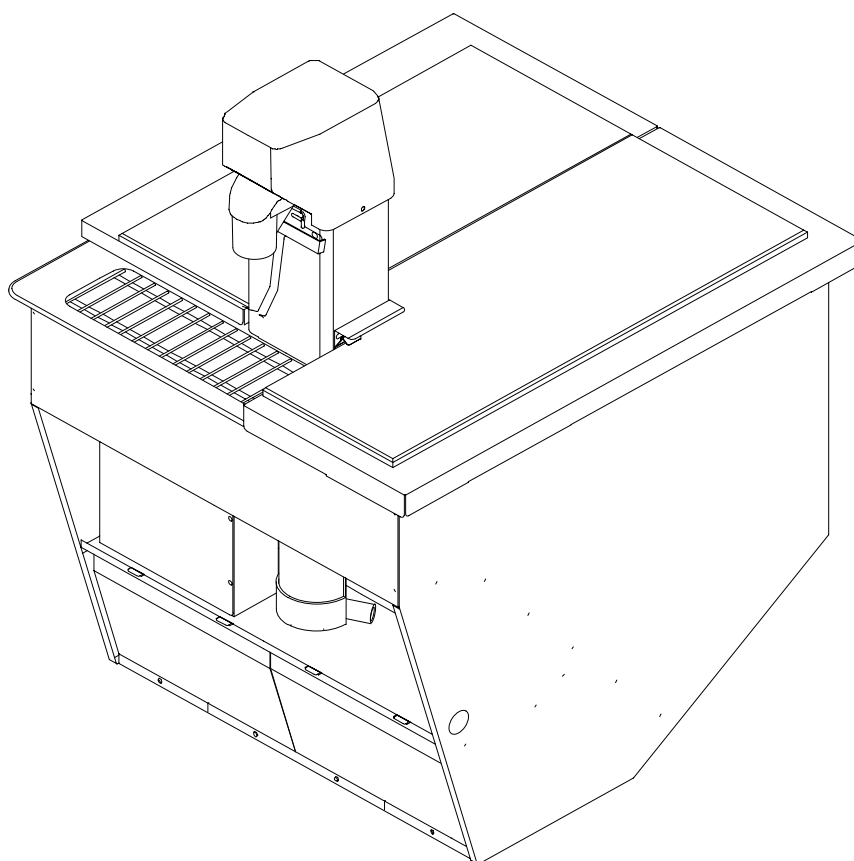
IMI CORNELIUS INC

www.cornelius.com

ICE DISPENSER

Model: UC150 ICE ONLY

Operator's Manual



Part No. 620917311

August, 1999

Revision Date: December 16, 2005

Revision: B

THIS DOCUMENT CONTAINS IMPORTANT INFORMATION

This Manual must be read and understood before installing or operating this equipment

TABLE OF CONTENTS

| | Page |
|---|-----------|
| SAFETY INFORMATION | 1 |
| RECOGNIZE SAFETY INFORMATION | 1 |
| UNDERSTAND SIGNAL WORDS | 1 |
| FOLLOW SAFETY INSTRUCTIONS | 1 |
| CO ₂ (CARBON DIOXIDE) WARNING | 1 |
| SHIPPING, STORING, OR RELOCATING UNIT | 1 |
| SAFETY PRECAUTIONS | 3 |
| DESCRIPTION | 3 |
| SPECIFICATIONS | 3 |
| INSTALLATION INSTRUCTIONS | 6 |
| MAINTENANCE | 7 |
| DAILY (OR AS REQUIRED) | 7 |
| MONTHLY | 7 |
| START-UP & OPERATING INSTRUCTIONS | 7 |
| TORSION BAR REMOVAL | 7 |
| CLEANING AND SANITIZING INSTRUCTIONS | 9 |
| DISPENSER | 9 |
| AUGER ASSEMBLY BREAKDOWN | 10 |
| SPEED CONTROL FOR ICE DELIVERY | 11 |
| TROUBLESHOOTING | 15 |
| BLOWN FUSE OR CIRCUIT BREAKER. | 15 |
| AGITATOR DOES NOT TURN, AUGER DOES NOT TURN. | 15 |
| ICE DISPENSES CONTINUOUSLY. | 15 |
| SLUSHY ICE. WATER IN HOPPER. | 15 |
| AGITATOR TURNS, AUGER DOES NOT TURN. | 15 |
| AUGER TURNS, AGITATOR DOES NOT. | 15 |
| UC 150 PARTS LIST | 20 |
| UC 150 PARTS LIST (CONT'D) | 21 |
| UC 150 PART LIST (CONT'D) | 22 |
| WARRANTY | 23 |

LIST OF FIGURES

| | |
|---|----|
| FIGURE 1. TEMPLATE | 4 |
| FIGURE 2. DIMENSIONS TEMPLATE | 5 |
| FIGURE 3. TORSION BAR REMOVAL | 8 |
| FIGURE 4. AUGER ASSEMBLY | 10 |
| FIGURE 5. ICE AUGER MOTOR | 11 |
| FIGURE 6. WIRING DIAGRAM | 12 |
| FIGURE 7. LADDER DIAGRAM | 13 |
| FIGURE 8. US 150 EXPLODED VIEW | 16 |
| FIGURE 9. AGITATOR MOTOR AND DISPENSE SWITCH WIRING DETAIL .. | 17 |
| FIGURE 10. WIRING DIAGRAM | 18 |
| FIGURE 11. UC 150 PLUMBING | 19 |

SAFETY INFORMATION

Recognize Safety Information

This is the safety-alert symbol. When you see this symbol on our machine or in this manual, be alert to the potentially of personal injury.

Follow recommended precautions and safe operating practices.



Understand Signal Words

A signal word - **DANGER**, **WARNING**, OR **CAUTION** is used with the safety-alert symbol. **DANGER** identifies the most serious hazards.

Safety signs with signal word **DANGER** or **WARNING** are typically near specific hazards.

General precautions are listed on **CAUTION** safety signs. **CAUTION** also calls attention to safety messages in this manual.



DANGER



WARNING



CAUTION

Follow Safety Instructions

Carefully read all safety messages in this manual and on your machine safety signs. Keep safety signs in good condition. Replace missing or damaged safety signs. Learn how to operate the machine and how to use the controls properly. Do not let anyone operate the machine without instructions. Keep your machine in proper working condition. Unauthorized modifications to the machine may impair function and/or safety and affect the machine life.

CO₂ (Carbon Dioxide) Warning

CO₂ Displaces Oxygen. Strict Attention *must* be observed in the prevention of CO₂ (carbon dioxide) gas leaks in the entire CO₂ and soft drink system. If a CO₂ gas leak is suspected, particularly in a small area, *immediately* ventilate the contaminated area before attempting to repair the leak. Personnel exposed to high concentration of CO₂ gas will experience tremors which are followed rapidly by loss of consciousness and suffocation.

Shipping, Storing, Or Relocating Unit

CAUTION: Before shipping, storing, or relocating this Unit, the syrup systems must be sanitized and all sanitizing solution *must* be purged from the syrup systems. All water *must* also be purged from the plain and carbonated water systems. A freezing ambient temperature will cause residual water remaining inside the Unit to freeze resulting in damage to internal components of the Unit.

THIS PAGE LEFT BLANK INTENTIONALLY

SAFETY PRECAUTIONS

This ice dispenser has been specifically designed to provide protection against personal injury and eliminate contamination of ice. To ensure continued protection and sanitation, observe the following:

ALWAYS: disconnect power to the dispenser before servicing or cleaning.

NEVER: place hands inside of hopper or gate area without disconnecting power to the dispenser. Agitator rotation occurs automatically when dispenser is energized!

ALWAYS: be sure the removable lid is properly installed to prevent unauthorized access to the hopper interior and possible contamination of the ice.

ALWAYS: be sure the upper and lower front panels are securely fastened.

ALWAYS: keep area around the dispenser clean of ice cubes.



CAUTION: Dispenser cannot be used with crushed or flaked ice. Use of bagged, ice which has frozen into large chunks, can void warranty. The dispenser agitator is not designed to be an ice crusher. Use of large chunks of ice which “jam up” inside the hopper will cause failure of the agitator motor and damage to the hopper. If bagged ice is used, it must be carefully and completely broken into small, cube-sized pieces before filling into the dispenser hopper.

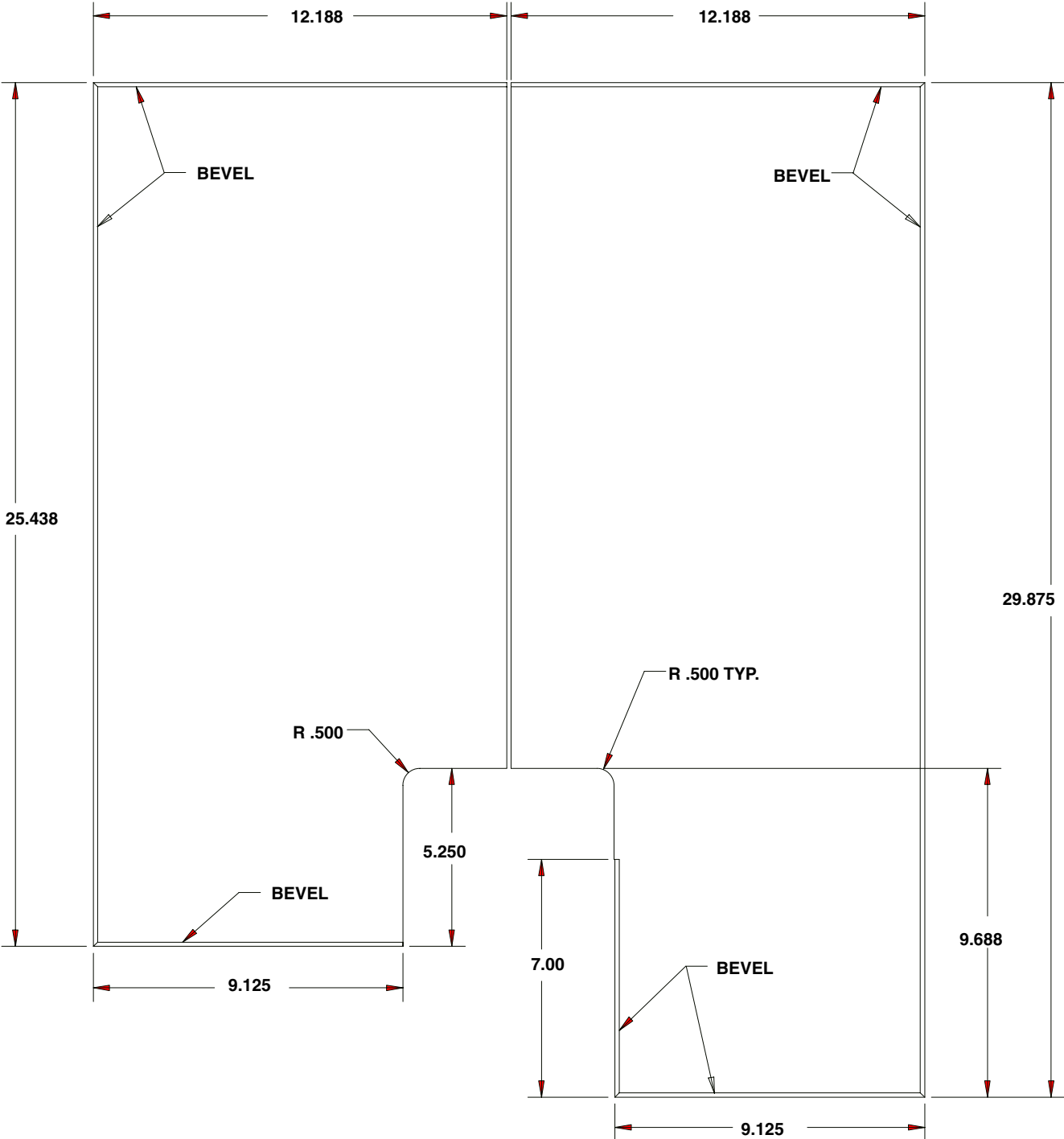
DESCRIPTION

The Undercounter ice dispenser solves your ice service needs in a sanitary, space saving, economical way. Designed to be manually filled with ice this dispenser will dispense cubes (up to 1-1/4" in size), cubelets and hard-chipped or cracked ice

SPECIFICATIONS

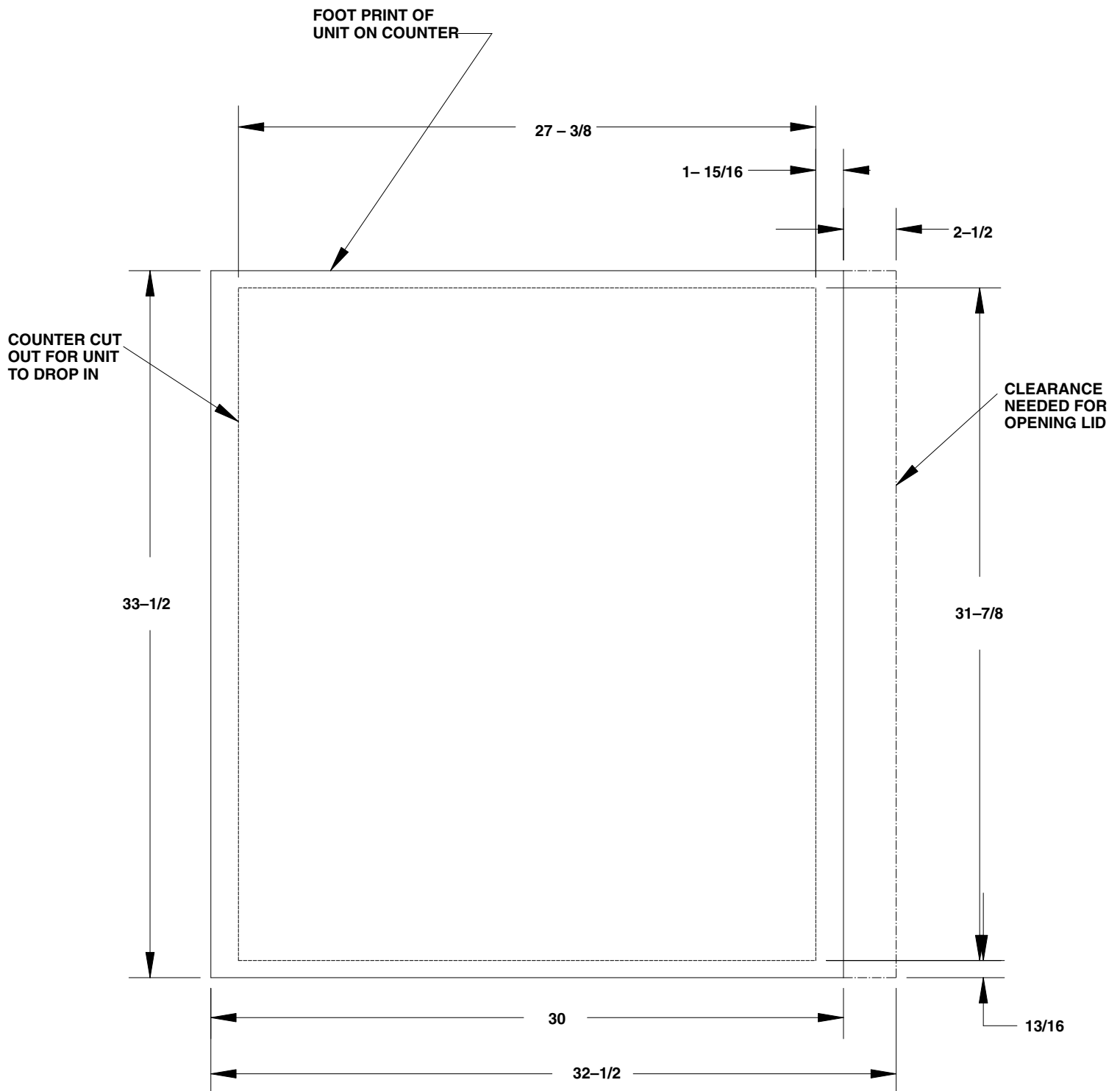
| | |
|--------------|--|
| Model: | UC150 |
| Ice Storage: | 150 lbs |
| Electrical: | 120/1/60, 3 amps total unit draw |
| Dimensions: | 30" Wide X 33-5/8" Deep X 27" Below Countertop 16-9/16" High Above Countertop |

OPTIONAL: CORIAN COUNTERTOPS ARE ATTACHABLE AND BLEND INTO RESTAURANT DECOR. (SUPPLIED BY KES). CORIAN IS CUT FROM COUNTER AND FABRICATED (SEE FIGURE 1).



CORIAN IS CUT FROM COUNTER AND IS REWORKED AS SHOWN ABOVE BEFORE BEING GLUED TO UC 150 DOOR LIDS

FIGURE 1. TEMPLATE



THE ABOVE FIGURE SHOWS THE REQUIRED CUTOUT FOR PLACING THE ICE DISPENSER INTO A COUNTER TOP. THE DOTTED LINE IS THE ACTUAL CUTOUT DIMENSIONS WHILE THE SOLID LINE SHOWS THE AMOUNT OF OVERHANG FOR THE DISPENSER.

FIGURE 2. DIMENSIONS TEMPLATE

INSTALLATION INSTRUCTIONS

IMPORTANT: It is the responsibility of the installer to ensure that the drains from the dispensing equipment is installed and maintained according to Federal, State and Local Laws.

1. Locate the dispenser indoors on a level counter top.

A. COUNTER MOUNTING

The ice dispenser must be sealed to the counter. The template drawing indicates the opening that must be cut in the counter. Locate the desired position for the dispenser, then mark the outline dimensions on the counter using the template drawings. Cut openings in counter.

Apply a continuous bead of NSF International (NSF) listed silastic sealant (Dow 732 or equal) approximately 1/4" inside of the unit outline dimensions and around all openings. Then, position the unit on the counter within the outline dimensions. All excess sealant must be wiped away immediately.

2. The drain tube is routed through the large opening in the bottom of the unit. See the MOUNTING TEMPLATE (page 5) for locating the required clearance hole in the counter for these utility lines. The power cord is routed through the holes in the side of the unit.
3. SINK DRAIN ASSEMBLY: Connect the drain tube to an open drain. Additional drain tubing is provided with the unit. The drain tube must continuously pitch downward and contain no "traps" or improper drainage will result.
 - A. Use 3/4" nominal plastic pipe.
 - B. To assure proper drainage, do not allow "trap" to form in drain line. Be sure drain line runs flat with bottom of dispenser.

NOTE: This equipment must be installed with adequate backflow protection to comply with federal, state, and local codes.

4. Clean the hopper interior (see CLEANING INSTRUCTIONS in Operator's Manual).
5. Connect the power cord to a 120 volt, 60 cycle, 15-Amp, 3-wire grounded receptacle.

MAINTENANCE

The following dispenser maintenance should be performed at the intervals indicated:

DAILY (or as required)

Remove foreign material from vending area drip tray to prevent drain blockage. Clean vending area. Check for proper water drainage from the vending area drip tray.

MONTHLY

Clean and sanitize the hopper interior and beverage system if applicable (see CLEANING INSTRUCTIONS).

START-UP & OPERATING INSTRUCTIONS

Fill the hopper with ice. Dispense a large cup of ice. Repeat this procedure whenever the dispenser has run out of ice.

In normal operation, pushing the ice dispenser lever will cause ice to flow from the ice chute. Ice flow will continue to flow as long as the lever is held depressed.



CAUTION: Use caution to avoid spilling ice when filling dispenser. Clean up immediately any spilled ice from filling or operating the unit. To prevent contamination of ice, the lid must be installed on the unit at all times.

If the dispenser fails to dispense ice, see troubleshooting guide.

TORSION BAR REMOVAL

The hinged door as shipped from the factory is set up for the mounting of Corian on the top. In the case where Corian will not be used, it is recommended that the rear torsion bar be removed so as to decrease the spring force. To accomplish this task, the recommended procedure is as follows.

1. Remove balloon Item 46 Ice Deflector by removing the three knurled screws that hold the Ice Deflector in place.
2. Break the RTV seal that holds the polymeric inner lid in place. This should be done with a sharp instrument.
3. Gently pry the inner lid out of the stainless steel cover.
4. Now that the complete Torsion Bar Assembly is visible, locate the Counter Balance Pivot which is balloon item 71. Using an 11/32" socket or equivalent, remove the two 8-32 hex nuts.
5. Carefully pry the pivot up and away from the mounting studs. As you do this, the torsion shafts will move along with the pivot.
6. Once the pivot is free of the studs, moving it a little further towards you should allow the torsion shafts to come free of the pivot.
7. You should be able to grab the rear torsion bar at this time and pull away from the end that is captured in the sheetmetal bracket.
8. Reverse the steps to reassemble the door.
9. RTV liner back in place.

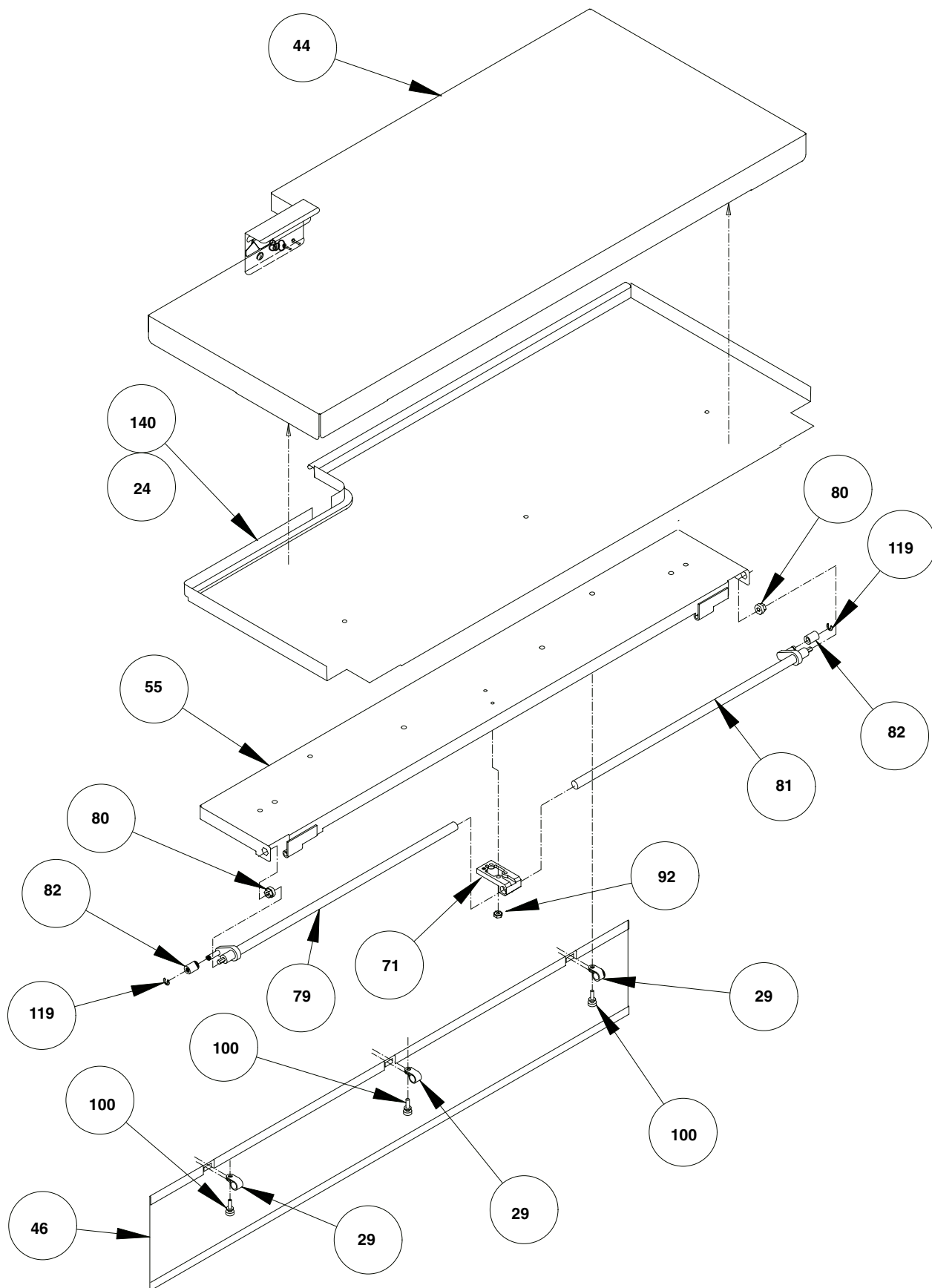


FIGURE 3. TORSION BAR REMOVAL

CLEANING AND SANITIZING INSTRUCTIONS



WARNING: Disconnect Power Before Cleaning! Do not use metal scrapers, sharp objects or abrasives on the ice storage hopper, top cover and the agitator disk, as damage may result. Do not use solvents or other cleaning agents, as they may attack the plastic material.

Soap solution - Use a mixture of mild detergent and warm (100 F) potable water.

Sanitizing solution - Use 1/2 ounce of household bleach in 1 gallon of potable water. Preparing the sanitizing solution to this ratio will create a solution of 200 PPM.

DISPENSER

1. CLEANING EXTERIOR SURFACES

Important: Perform the following daily.

- A. Remove the cup rest from drip tray.
- B. Wash the drip tray with soap solution. Rinse with potable water and allow solution to run down the drain.
- C. Wash cup rest with soap solution and rinse in potable water. Install the cup rest into the drip tray.
- D. Clean all exterior surfaces with soap solution and rinse with potable water.

2. CLEANING INTERIOR SURFACES



CAUTION: When pouring liquid into the hopper, do not exceed the rate of 1/2 gallon per minute.

Important: Perform the following at least once a month.

- A. Open right hand hopper cover, then remove all ice from hopper.
- B. Lift up and remove the left hand hopper cover.
- C. Remove agitator disk and agitator assembly.
- D. Remove tower cover by removing three thumb screws.
- E. Move the retaining bail to the rear of the tower which will allow removal of the ice chute assembly.
- F. Grasp the ice auger by the shaft end and lift out the auger tube. Take care not to damage either end of the auger.
- G. Remove the auger tube by lifting upward. The tube will separate into two halves for easy cleaning when fully removed.
- H. Open the front door of the cabinet below the hopper, this will give you access to the lower auger drive area and the passage between the hopper and the auger for cleaning.
- I. Using the previously prepared detergent solution clean the hopper covers, agitator disk, and agitator assembly, interior of the hopper, both halves of the ice chute, auger, auger tubes, and the lower auger area of the auger housing. Thoroughly rinse all of the previously cleaned with potable water.
- J. Reassemble the agitator assembly and disc into the hopper. Make certain that the retaining screw is tight.
- K. Using a mechanical spray bottle filled with sanitizing solution, spray the entire interior of the hopper and the agitator assembly. Go to the lower auger drive area and also spray with sanitizing solution. Allow to air dry.

- L. Using the spray bottle, spray the inside of the two halves of the auger tube, the auger, the two halves of the chute assembly and the undersides of the right and left covers. Allow to air dry.
- M. Reassemble the two halves of the auger tube and place back into its mounting. Holding the auger by the upper shaft end, insert into the guide tube. Make certain that the auger slips into its drive pin. Chute assembly will not assemble properly if the auger is not seated on its drive pin. Reassemble the upper auger and chute assembly onto the auger and lock down by snapping the bail onto the upper housing. Reinstall the tower cover with the thumb screws.
- N. Reinstall the covers. Put the right cover on first before you close the left cover.

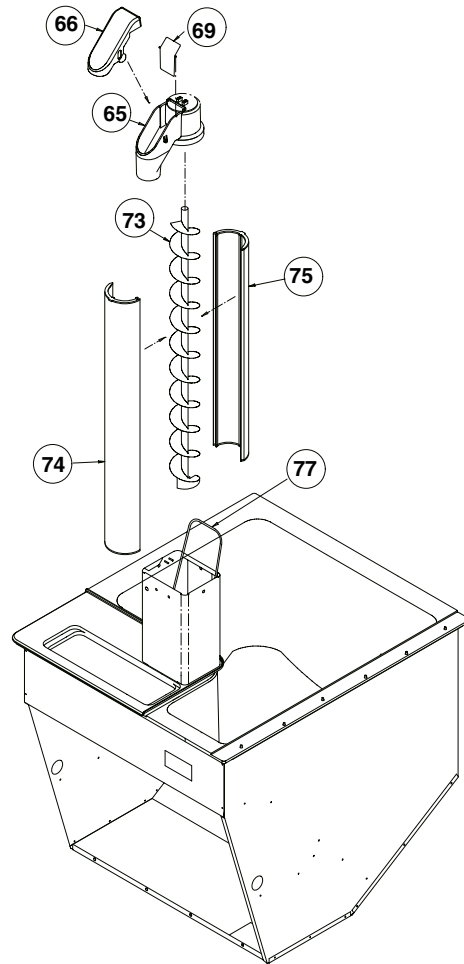
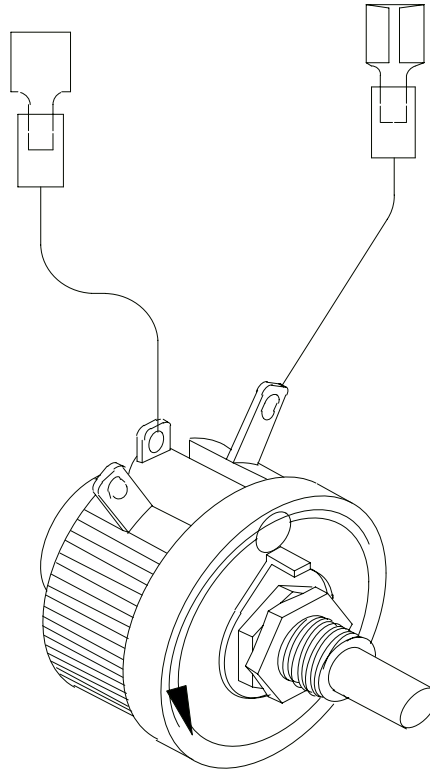


FIGURE 4. AUGER ASSEMBLY

AUGER ASSEMBLY BREAKDOWN

1. For cleaning, the auger assembly is constructed for simple not tools required breakdown. First remove the tower cap (item 69) by removing the 3 knurled screws.
2. Once the tower cap is out of the way you will see a wire retainer (item 77). By placing your fingers on the backside of the ice chute (item 65) with your thumbs pointing upward, place the thumbs on the retainer wire and with a slight upward movement push the wire retainer towards the rear of the unit. The retainer should pop out of the saddle and swing backwards.
3. At this point, you should be able to pull up on the ice chute and remove it from the assembly. You will notice that the ice chute is made up of three pieces. That is the ice chute, the ice chute cover and the auger gate which is respectively (Items 65, 66, and 69). Take not so that when reassembling the ice chute, the auger gate cradles in the ice chute with the short tang side up.
4. The auger (Item 73) can now be removed by just grasping it and pulling up. Notice that the bottom of the auger has a depression in the form of a D pattern. When replacing the auger, it will be necessary to rotate the auger after insertion in the tube to engage the motor shaft.

5. Last are the auger housings (Items 74 and 75). They are dislodged by pulling upward. Check their orientation and the fact that the longer tube is on the front side. When positioning the housings back in the dispenser, the longer tube should be placed first so as to seat in the lower housing to set up the orientation (top and bottom are marked on end of the tube tab at the top), otherwise the ice chute spout will not point towards the front of the dispenser.



ARROW SHOWS CCW DIRECTION FOR INCREASING SPEED OF ICE AUGER MOTOR.

FIGURE 5. ICE AUGER MOTOR

SPEED CONTROL FOR ICE DELIVERY

The ice auger is a variable speed device. A potentiometer is used to control this speed. The potentiometer is located in the electrical box which is below the counter.

The output shaft of the potentiometer protrudes through an opening on the bottom side of the electrical box. For adjustment the output shaft (Items 62 and 59) is easily reached by removing the left side panel cover (item 42).

By turning the knob CCW (counterclockwise), you will increase the speed of the ice delivery. Please note that the potentiometer position is upside down so the actual motion for increasing the speed is from left to right.

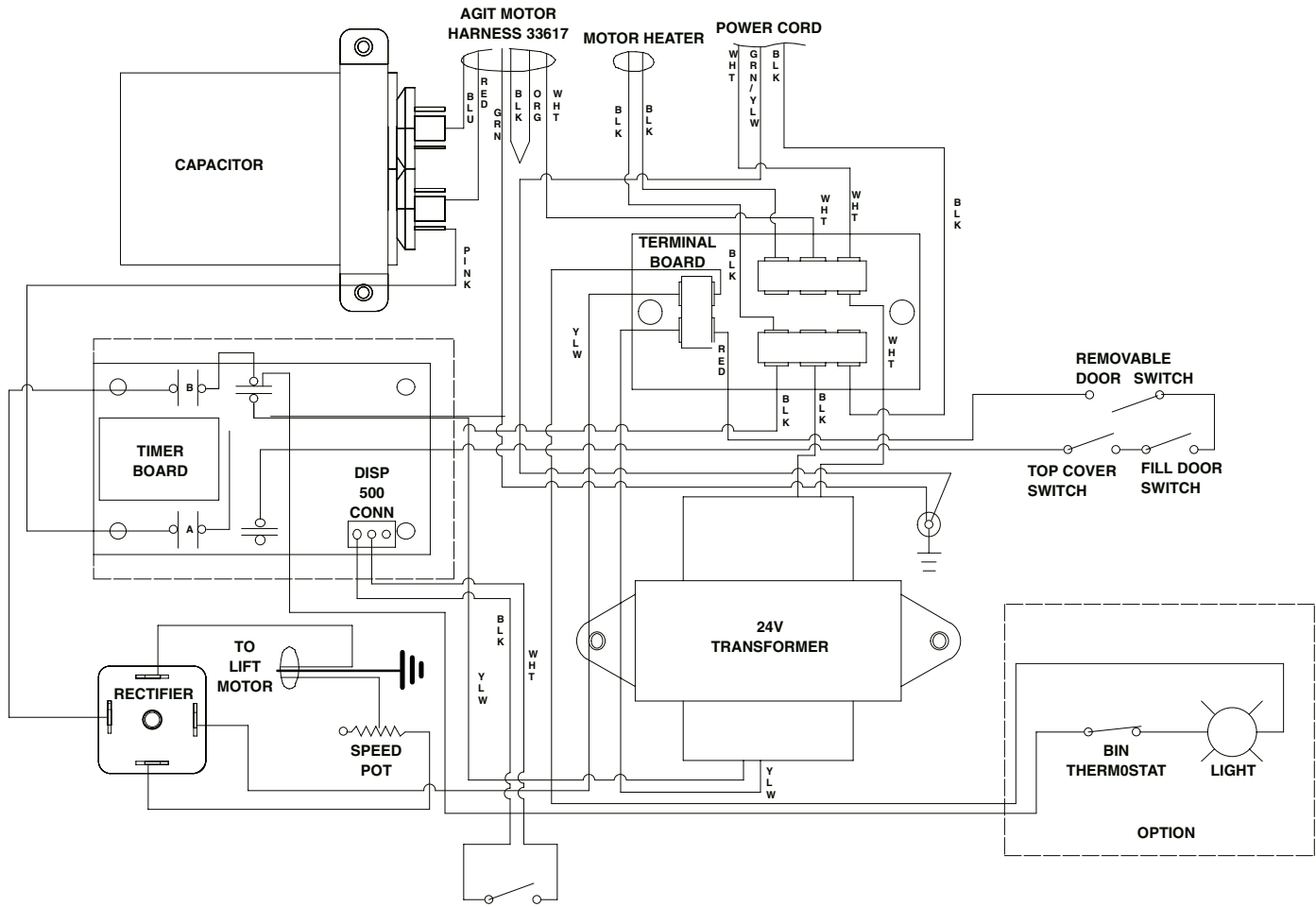


FIGURE 6. WIRING DIAGRAM

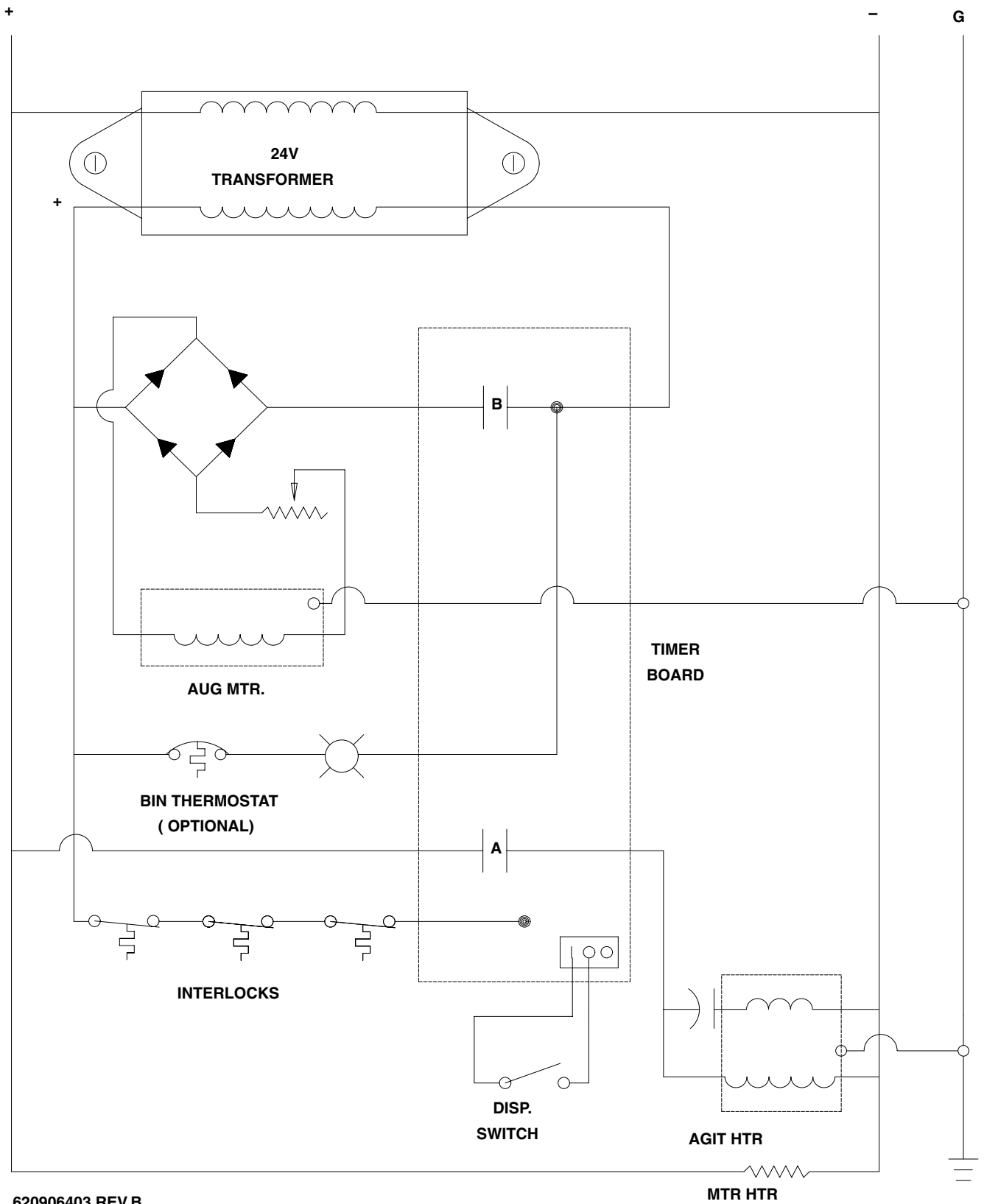


FIGURE 7. LADDER DIAGRAM

THIS PAGE LEFT BLANK INTENTIONALLY

TROUBLESHOOTING

IMPORTANT: Only qualified Personnel should service internal components or electrical wiring.

Should your unit fail to operate properly, check that there is power to the unit and that the hopper contains ice. If the unit does not dispense, check the following chart under the appropriate symptoms to aid in locating the defect.

| Trouble | Probable Cause |
|--|--|
| BLOWN FUSE OR CIRCUIT BREAKER. | <ul style="list-style-type: none"> A. Short circuit in wiring. B. Defective 24 VAC transformer.. C. Defective agitator motor. D. Shorted motor. |
| AGITATOR DOES NOT TURN, AUGER DOES NOT TURN. | <ul style="list-style-type: none"> A. No power. B. Bent depressor plate (does not actuate switch). C. Defective dispensing switch. D. Defective interlocks, lids not closed. E. Defective timer board F. Defective 24 VAC transformer. |
| ICE DISPENSES CONTINUOUSLY. | <ul style="list-style-type: none"> A. Stuck or bent depressor plate (does not release switch). B. Defective dispensing switch. C. Improper switch installation. D. Defective timer board. |
| SLUSHY ICE. WATER IN HOPPER. | <ul style="list-style-type: none"> A. Blocked drain. B. Unit not level. C. Poor ice quality due to water quality or icemaker problems. D. Improper use of flaked ice. |
| AGITATOR TURNS, AUGER DOES NOT TURN. | <ul style="list-style-type: none"> A. Defective auger motor. B. Defective or improper setting of speed control. C. Defective rectifier. D. Ice jam. E. Defective timer board. |
| AUGER TURNS, AGITATOR DOES NOT. | <ul style="list-style-type: none"> A. Defective agitator motor. B. Defective motor capacitor. C. Defective timer board. |



Part # Corrections/Update Document

| Unit Type/Model # | Manual # |
|---|-----------|
| OPERATORS MANUAL ICE DISPENSER UC150 ICE ONLY | 620917311 |
| Revision 2 2/10/06 | |

| Page | Item | Old Part | Desc. | New Part | Desc. | Agent | Date | Notes |
|------|------|-----------|-------------------|-----------|--|-------|----------|---|
| 21 | 57 | 620305201 | AUGER MOTOR | 629087456 | SUPER SEAL MOTOR KIT OR | Jls | 03/10/03 | Motor w/ceramic seal and lower housing. |
| | | | | 629087489 | MOTOR & SUPER SEAL ASY KIT OR | | | Motor with seal installed (no lower housing). |
| | | | | 629087431 | KIT SEAL REPLACEMENT UCXX | | | Contains the seal only. |
| 21 | 58 | 620305202 | AGITATOR TIMER | 620311701 | AGITATOR TIMER BOARD ONLY | Jls | 01/22/03 | If unit has old timer board on it must order Timer Board Update Kit 629087410. |
| n/a | n/a | n/a | | 620045952 | AUGER MOTOR MOUNTING BRACKET | Jls | 01/22/03 | |
| n/a | n/a | n/a | | 620046706 | REMOVABLE ICE BASKET HOLDER | Jls | 01/22/03 | |
| n/a | n/a | n/a | | 620504025 | HINGE COVER ASSY | | | |
| n/a | n/a | n/a | | 629087428 | TOWER BASE REPAIR KIT | Jls | 01/22/03 | Used if base breaks. Kit contains support brackets that hold ice chute retainer in place. |
| n/a | n/a | | | 629085201 | DOOR ASSY RH KIT | Jls | 01/22/03 | |
| n/a | n/a | | | 620048801 | DOOR ASSY LH | Jls | 01/22/03 | |
| n/a | n/a | | | 620506540 | HINGE END CAP | Jls | 01/22/03 | |
| n/a | n/a | | | 620503702 | DRIP TRAY | Jls | 01/22/03 | |
| n/a | n/a | | | 620024906 | LATCH HANDLE ASSY | Jls | 01/22/03 | |

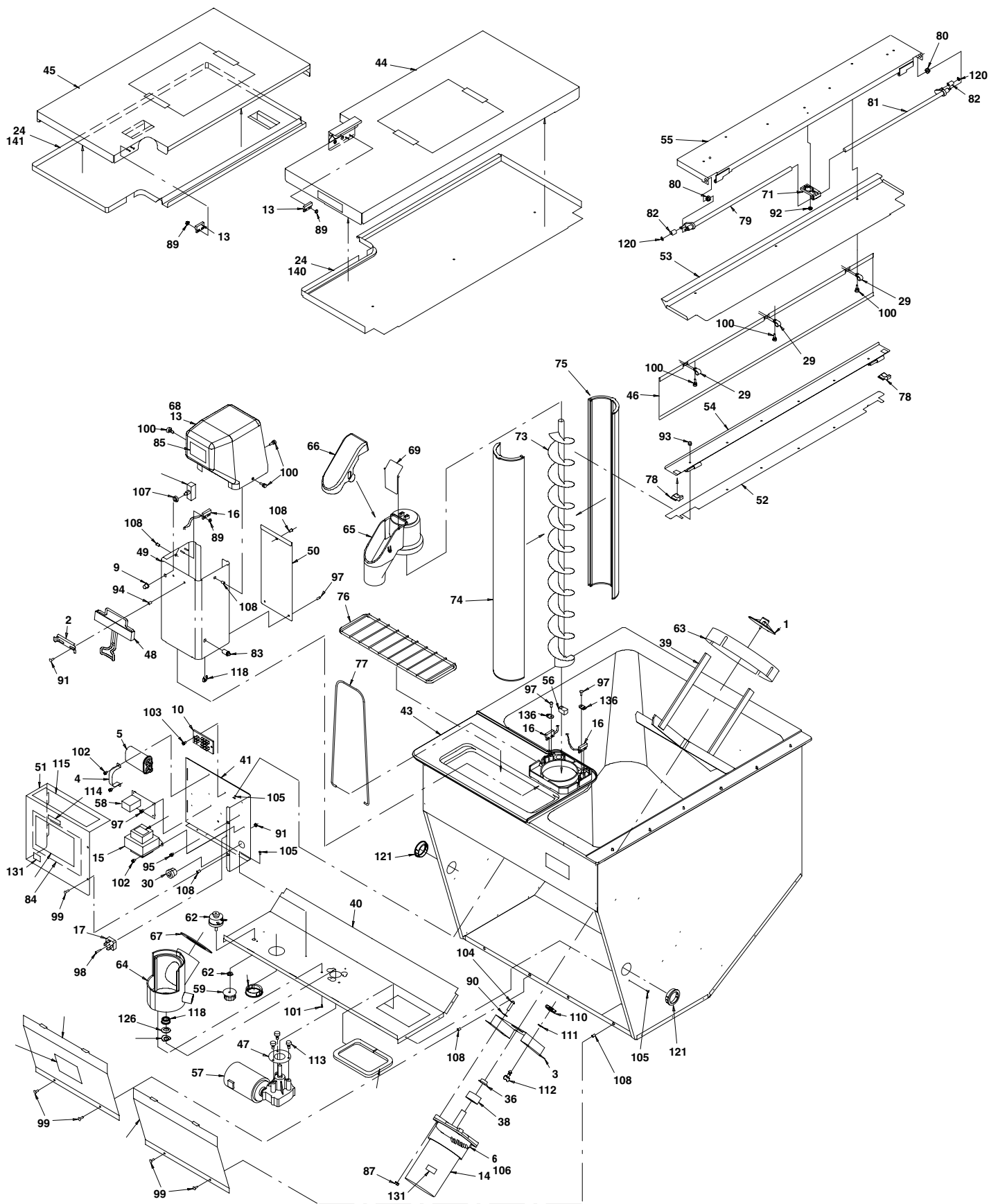
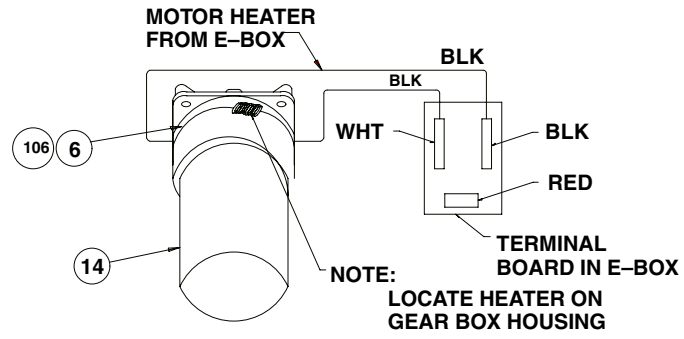
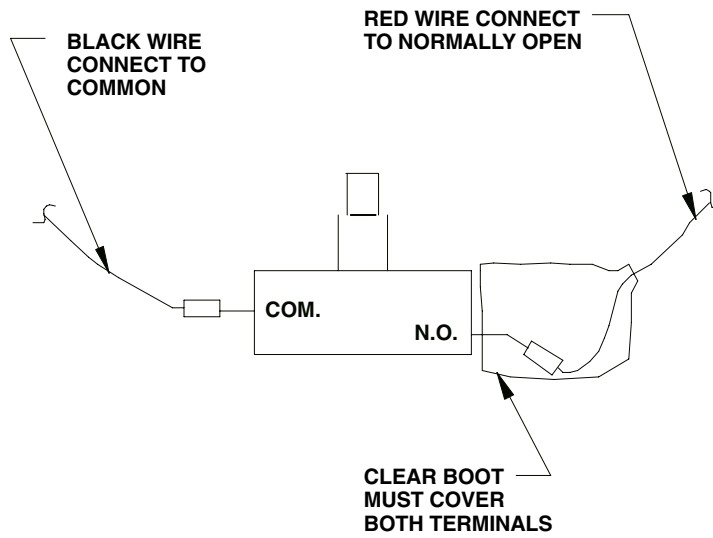


FIGURE 8. US 150 EXPLODED VIEW

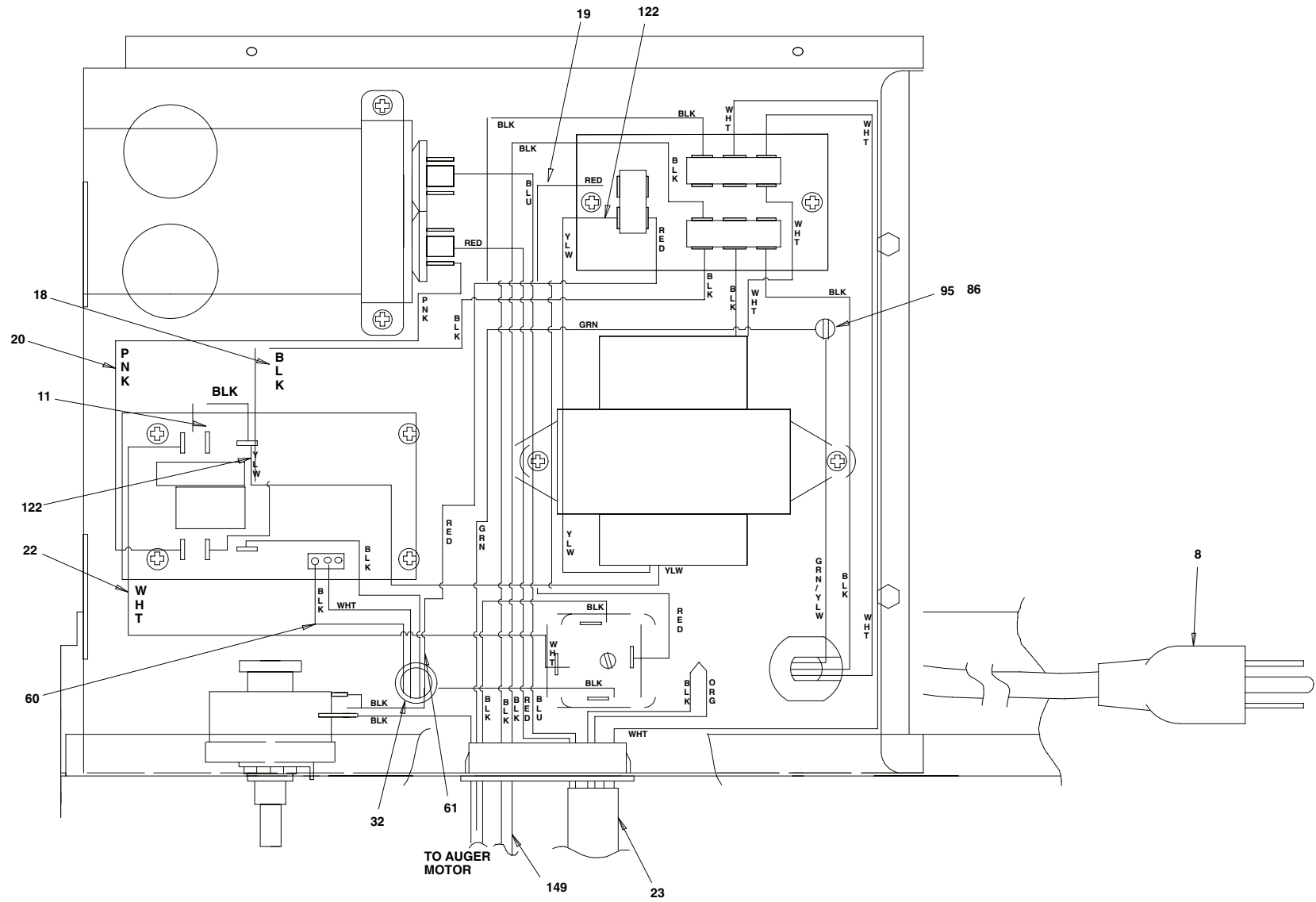


AGITATOR MOTOR HEATER WIRING DETAIL



DISPENSE SWITCH WIRING DETAIL

FIGURE 9. AGITATOR MOTOR AND DISPENSE SWITCH WIRING DETAIL



“A”, “B”, and “C”

FIGURE 10. WIRING DIAGRAM

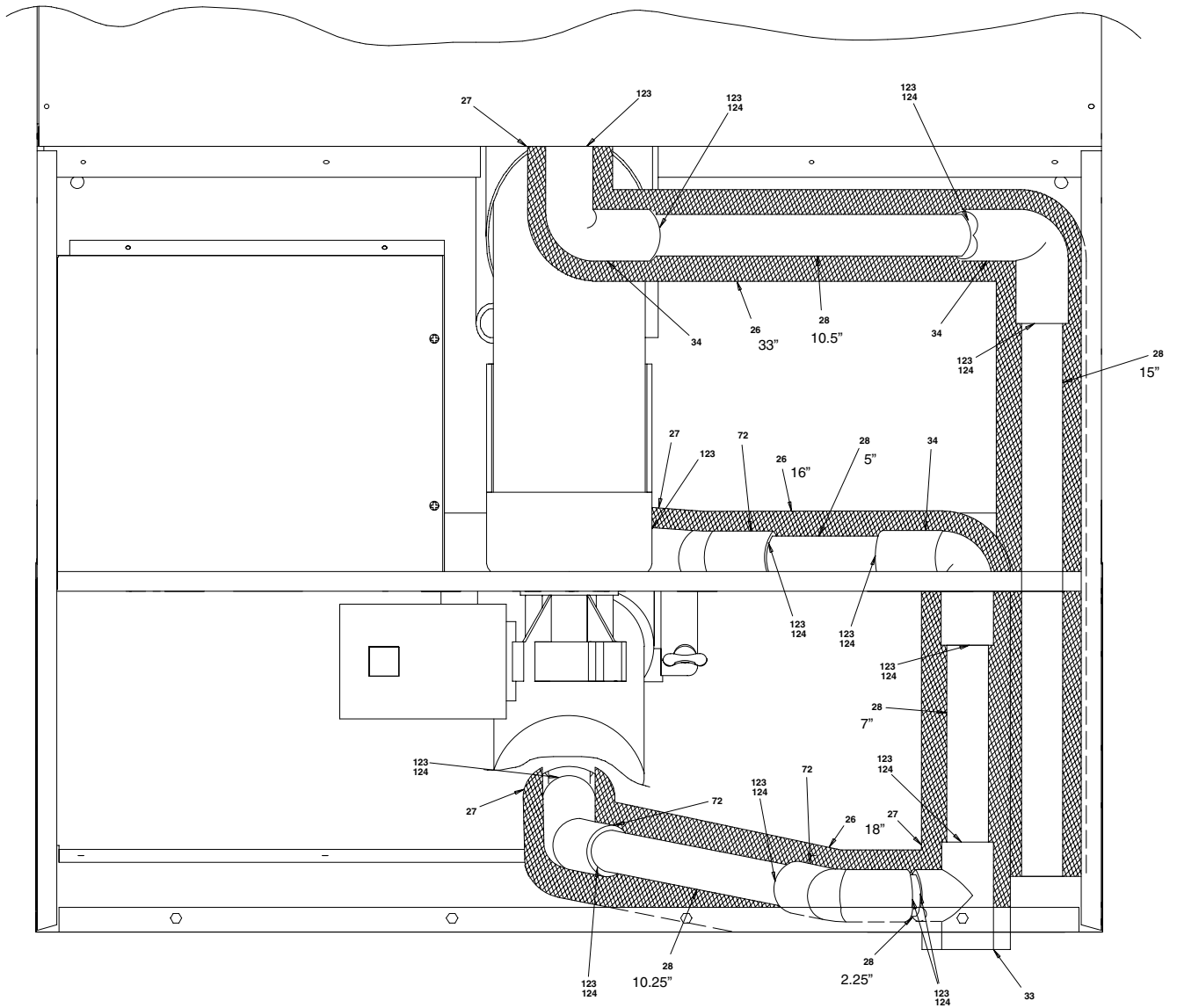


FIGURE 11. UC 150 PLUMBING

UC 150 PARTS LIST

| Item No. | Part No. | Name | Qty. |
|----------|-----------|--------------------------------|------|
| 1 | 15087 | Retainer, Agitator | 1 |
| 2 | 27107 | Retainer Lever Ice Disp | 1 |
| 3 | 29303R | Plate, Motor Mounting R00 | 1 |
| 4 | 30514 | Saddle Clamp For Capacitor | 1 |
| 5 | 30774 | Capac Motor Agit 2230AK6 | 1 |
| 6 | 30794 | Heater Agit Mtr 2230AK6 | 1 |
| 7 | 30895 | Actuator Swt 223AK6 | 1 |
| 8 | 30995 | Power Cord Assy R02 | 1 |
| 9 | 31007 | Boot Switch 2230AK6 | 1 |
| 10 | 31107 | Board Term | 1 |
| 11 | 31655 | Jumper, Blk 3" 16GA | 1 |
| 12 | 31945 | Jumper, Red 18" 16GA R00 | 1 |
| 13 | 31981 | Actuator Hamlin Magnetic | 2 |
| 14 | 620307901 | Kit, Agitator Motor, 115 VAC | 1 |
| | 620307902 | Kit, Agitator Motor, 220 VAC | 1 |
| 15 | 32682 | Transformer Asy 120/25VAC 80VA | 1 |
| 16 | 32953 | Reed Switch Assy | 2 |
| 17 | 32958 | Rectifier 10Amp. 800V | 1 |
| 18 | 33611 | Lead Jump Blk 9" | 1 |
| 19 | 33612 | Lead Jump Red 9" | 1 |
| 20 | 33613 | Lead Jump PK 7" | 1 |
| 21 | 33614 | Lead Jump White 15" | 1 |
| 22 | 33616 | Lead Jump White 9" | 1 |
| 23 | 33617 | Harness Wire Motor Agit | 1 |
| 24 | 50200 | RTV, Dow #732 Clear 10.3 Oz | |
| 25 | 50228 | Heat Conductor Compound | |
| 26 | 50279 | Tube Insul 1-1/8ID x 3/8W x 6' | 60 |
| 27 | 50326 | Insulation Tape 1/8" x 2" x 30 | |
| 28 | 50336 | Pipe PVC Sch. 40 3/4" x 20' | 48.5 |
| 29 | 50456 | Nylon-Wire Clamp | 3 |
| 30 | 50458 | Strain Relief Bushing | 1 |
| 31 | 50475 | Bushing Heyco 7/8 | 1 |
| 32 | 50573 | Snap Bushing 1/2 | 1 |
| 33 | 50950 | Tee - 3/4 | 1 |
| 34 | 50951 | Ell-90 3/4 SOC x 3/4 SOC | 3 |
| 35 | 50952 | Adpt-3/4 SOC x 3/4 FPT | 2 |
| 36 | 51859 | Seal Shaft Motor 2230AK6/DB150 | 1 |
| 37 | 52132 | Adhesive Loctite 242 | .001 |
| 38 | 52876 | Gasket, Motor Shaft | 1 |
| 39 | 620024001 | Agitator Asy UC Ice Only | 1 |
| 40 | 620024305 | Brkt Mtr Mtg Auger UC150 | 1 |
| 41 | | Obsolete | |
| 42 | 620024307 | Panel Cover Elect Box UC150 | 2 |
| 43 | 620024309 | Cabt/Hopper Foamed Asy UC150 | 1 |
| 44 | 620024310 | Ice Fill Cvr Weldment UC150 | 1 |
| 45 | 620024311 | Cover Weldment UC150 | 1 |
| 46 | 620024316 | Ice Deflector UC150 | 1 |
| 47 | 620024501 | Auger Motor Bolt Plate UC150 | 1 |
| 48 | 620024701 | Lever Dispense UC150 | 1 |
| 49 | 620024702 | Tower UC150 | 1 |
| 50 | 620024705 | Access Plate Tower UC150 | 1 |
| 51 | 620024904 | Cover E-Box UC150 McD | 1 |
| 52 | 620024913 | Spacer Hinge Hopper UC150 McD | 1 |
| 53 | | Obsolete | |
| 54 | 620024919 | Asy Hinge Shield UC150 McD | 1 |

UC 150 PARTS LIST (CONT'D)

| Item No. | Part No. | Name | Qty. |
|----------|-----------|---|------|
| 55 | 620024920 | Asy C/B Brkt UC150 McD | 1 |
| 56 | 620024921 | Bushing Auger Drive UC150 | 1 |
| 57 | 629087456 | Super Seal Kit (Includes motor, foamed auger housing, seals, and Hardware) | 1 |
| N/A | 620045952 | Auger Motor Mounting Bracket | |
| N/A | 620046706 | Removable Ice Basket Holder | |
| N/A | 620504025 | Hinge Cover Assy | |
| N/A | 629087428 | Tower Base Repair Kit | |
| 58 | 620311701 | Agitator Timer (Order Timer Board Update Kit, 629087410, if unit has old timer board) | 1 |
| 59 | 620305204 | Knob Rheostat | 1 |
| 60 | 620305701 | Harness Wire Disp Switch UC150 | 1 |
| 61 | 620305702 | Harness Reed Switch UC150 | 1 |
| 62 | 620305704 | Rheostat Asy | 1 |
| 63 | 620503801 | Agitator Disk UC150 | 1 |
| 64 | 620503803 | Lower Tube UC | 1 |
| 65 | 620504001 | Ice Chute Under Counter | 1 |
| 66 | 620504002 | Ice Chute Cover Under Counter | 1 |
| 67 | 620504006 | Hopper Conduit Seal | 1 |
| 68 | 620504010 | Tower Cap UC150 McD | 1 |
| 69 | 620504011 | Auger Gate UC150 McD | 1 |
| 70 | | Obsolete | |
| 71 | 620504020 | Pivot C/P UC150 | 1 |
| 72 | 620504021 | Ell 45 PVC Slide x Slip | 3 |
| 73 | 620505501 | Auger Plastic UC150 | 1 |
| 74 | 620505701 | Asy Auger Housing Front UC150 | 1 |
| 75 | 620505702 | Asy Auger Housing Rear UC150 | 1 |
| 76 | 620700901 | Cup Rest UC Ice Only | 1 |
| 77 | 620701104 | Ice Chute Retainer UC150 | 1 |
| 78 | 620701110 | Cam C/B UC150 | 2 |
| 79 | 620701111 | Arm C/B Front | 1 |
| 80 | 620701112 | Hex C/B UC150 | 2 |
| 81 | 620701114 | Arm C/B Rear | 1 |
| 82 | 620701115 | Roller C/B | 2 |
| 83 | 620701117 | Latch Asy Bullet UC150 | 1 |
| 84 | 620906401 | Wiring Diagram UC150 | 1 |
| 85 | 620906404 | Label Ice | 1 |
| 86 | 70015 | Nut Hex 10-32 Keps | 2 |
| 87 | 70018 | Nut Hex 1/4-20 Keps | 4 |
| 88 | 70021 | Nut Hex 08-32 SS 18-8 | 2 |
| 89 | 70023 | Nut Hex 04-40 STCA Deps | 2 |
| 90 | 70048 | Washer SR 225 449 062 STZI INT | 4 |
| 91 | 70075 | Nut Hex 06-32 STZI Keps | 1 |
| 92 | 70076 | Nut Hex 08-32 STCA KEPS 1/8 | 2 |
| 93 | 70085 | Nut Acorn 08-32 SS | 6 |
| 94 | 70104 | Insert THD 08-32 Thin Sht | 5 |
| 95 | 70120 | Screw MA 10-32 16 GRD | 1 |
| 96 | 70134 | Screw MA 04-40 RDSL 12 | 2 |
| 97 | 70147 | Screw SM 06 TB RDPH 16 STCA | 4 |
| 98 | 70153 | Screw MA 06-32 RDPH 14 | 1 |
| 99 | 70171 | Screw MA 08-32 TRPH 12 SS | 8 |
| 100 | 70188 | Screw WG 08-32 KN 16 | 6 |
| 101 | 70204 | Screw SM 08 TA TRPH 16 SS | 3 |
| 102 | 70215 | Screw SM 08 TB HXWS 08 | 4 |
| 103 | 70217 | Screw SM 08 TB HX 16 | 2 |
| 104 | 70260 | Bolt MA 1/4-20 RDPH 32 SS | 4 |

UC 150 PARTS LIST (CONT'D)

| Item No. | Part No. | Name | Qty. |
|----------|-----------|------------------------------------|------|
| 105 | 70320 | Rivet Pop 125D 063-125 | 10 |
| 106 | 70341 | Gate Slide Spring | 1 |
| 107 | 70847 | Spacer SWT 2230 | 1 |
| 108 | 70959 | 8-32 STL. PL HEX TSN | 4 |
| 109 | 70992 | Receptacle, 1/4 Turn | 4 |
| 110 | 70993 | 1/4 Turn Retainer | 4 |
| 111 | 70994 | 1/4 Turn Stud Wing Head | 4 |
| 112 | 71028 | Bolt SH 1/4-20 | 3 |
| 113 | 90580 | Label Elec 115V Brady #CV2C NV | 1 |
| 114 | 92067 | Label Adjust QFD Agit Timer | 1 |
| 115 | 92305 | Label Auto Trans | 1 |
| 116 | | Obsolete | |
| 117 | 620701121 | Seal Motor Shaft Auger UC150 | 1 |
| 118 | 620701119 | E Ring Stainless Stil Bullet Latch | 1 |
| 119 | 620701120 | E Ring Stainless Steel C/B | 2 |
| 120 | 50767 | Heyco Snap Bushing | 3 |
| 121 | 620906403 | Wiring Diagram Ladder UC150 | 1 |
| 122 | 30064 | Q C Terminal, 1/4 | 2 |
| 123 | 50332 | PVC Cement | .001 |
| 124 | 50346 | E Z Weld Primer-CPVC PVC | .001 |
| 125 | 620701123 | Wash Thrust 14GA 9/16 ID SS | 1 |
| 126 | 620701122 | Wash Spr Curv Disc SS .525ID | 1 |
| 127 | 70122 | Screw SM 04 TA TRPH 12 SS | 2 |
| 128 | 30455 | #10 Insul Eyelet Terminal | 1 |
| 129 | 620504009 | Bucket Ice Fill LP150 McD | 1 |
| 130 | 91956 | Label Warn Elec Shock | 1 |
| 131 | 90432 | Label Caution Heater | 1 |
| 132 | 620802101 | S-Support Pallet 31-1/2 x 36 | 1 |
| 133 | 620802102 | A-Carton 36-1/8 x 31-1/2 x 52-1/8 | 1 |
| 134 | 620802103 | S-in Support 40-3/4 x 36-1/8 | 2 |
| 135 | 620802104 | S-in Support 48 x 31-1/2 | 1 |
| 136 | 52972 | Flush Nylon Clip | 1 |
| 137 | | Obsolete | |
| 138 | 620917311 | Owner's Manual | 1 |
| 139 | | | |
| 140 | 620508901 | Liner Lid RH | 1 |
| 141 | 620508902 | Liner Lid LH | 1 |
| 142 | 620909702 | Installation Manual | 1 |
| 143 | 80412 | Staple 7/8 x 1/4 | 6 |
| 144 | 80056 | Steel Strapping 1/2 x .015 | 190" |
| 145 | 80058 | Strapping Clip | 1 |
| 146 | 50418 | Plastic Bag | 1 |
| 147 | 80333 | Corner Protector | 2 |
| 148 | 90629 | Label Cleaning Caution | 1 |
| 149 | 620305705 | Motor Harness | 1 |
| 150 | 91574 | Plate, Identification | 1 |
| 151 | 620911201 | Label, Corian | 3 |
| 152 | 620911202 | Label, Speed Control | 1 |
| 153 | 620911203 | Sht Instl Corian Top | |
| 154 | 53219 | Blk Triom 1/32 | 18 |
| N/A | 829085201 | Door Assy RH Kit | |
| N/A | 620048801 | Door Assy LH | |
| N/A | 620506540 | Hinge End Cap | |
| N/A | 620503702 | Drip Tray | |
| N/A | 620024906 | Latch Handle Assy | |

WARRANTY

IMI Cornelius Inc. warrants that all equipment and parts are free from defects in material and workmanship under normal use and service. For a copy of the warranty applicable to your Cornelius, Remcor or Wilshire product, in your country, please write, fax or telephone the IMI Cornelius office nearest you. Please provide the equipment model number, serial number and the date of purchase.

Locate your local office on www.cornelius.com under the contact menu.

IMI CORNELIUS INC.

www.cornelius.com