

NEW PRODUCT BULLETIN

npb.2010

NEW SINGLE POLE RCBO

Slim in size, big on performance



CFL DIMMER



*Truly compatible
with dimmable CFLs*

OUTDOOR MOTION SENSOR



*Safety, security and
convenience.*

LIGHTING



*Energy efficient
lighting solutions.*

CAT 6A PATCH PANEL



*Open your mind
to Actassi.*

C-BUS WISER HOME CONTROL



*C-Bus control, all
from an iPhone.*

Pioneering Real Solutions for Real Problems

Welcome to the 2010 edition of Clipsal's New Product Bulletin. This year, Clipsal has made a considerable investment towards innovative products that offer true functionality, technology, stylish design, and above all, energy efficiency.

With energy prices set to increase rapidly over the coming years, offering energy efficient solutions to customers could open the door to many new opportunities for businesses. To help you with this, Clipsal has invested a great deal in planning, training and communication. We are continuously identifying areas, in which we can reduce, control and eliminate environmental risks.

This high importance on energy efficiency has resulted in the release of products such as our Spark-e-mate, Energy Controller and Motion Sensors – just to name a few. Another major product release for Clipsal in 2010 is Actassi Category 6 cabling and accessories. This new addition to Datacomms, provides the next level in data communication and is ideal for installations that require high speed and high bandwidth.

Our lighting range also continues to go from strength to strength, as you will see by the additional products represented right here in this year's New Product Bulletin. All products in our lighting range have been carefully selected, offering you excellent quality and reliability, and are backed by Clipsal's warranty and after sales service.

To complement our extensive lighting range, is the new CFL dimmer. This exciting new product pioneers dimming technology as we know it, taking it to the next level by making it possible to dim CFLs – something which was previously not possible. The Clipsal CFL Dimmer is an industry leading innovation that was developed here at Clipsal.

I hope that you will take advantage of the exciting new products and opportunities that have been designed to help your business grow. Thank you for your ongoing support to Clipsal, and for taking the time to consider our many new solutions, as featured here in this edition of the 2010 New Product Bulletin.



Damien Cummins

Executive General Manager,
Clipsal Australia Pty Ltd.

A handwritten signature in black ink, appearing to read 'Damien Cummins'. The signature is fluid and cursive.

Energy efficient opportunities

The Right Solutions to Save Energy

At Clipsal, we are convinced that offering clients an energy efficient solution is an important part of our business strategy. In the residential market, energy bills in excess of \$1350 per annum are starting to bite householders where it hurts.

The demand for energy efficiency is continually increasing and we encourage you to embrace this rapidly growing market. This is a great opportunity for electrical contractors to expand and diversify your business offering. With Clipsal's energy solutions, you can assist customers to reduce their energy consumption.

So how can you help customers reduce energy costs? Our innovative solutions in this New Product Bulletin is a great place to start, which includes:

- the only purpose-built CFL Dimmer for Dimmable CFLs
- a growing range of energy efficient lighting products
- intelligent outdoor motion sensors
- Wiser™ smart home control.

We are committed to continuous innovation and development of energy efficient products and solutions for Australia. Clipsal's energy saving offer also includes:

- EzAudit™ professional energy auditing tool
- Clipsal Energy Consumption Monitor
- exhaust fans with backdraft shutters
- dimmers
- timers
- PIRs
- a growing range of super quiet ceiling sweep fans
- fan speed controllers
- the ultimate in energy efficient solutions – C-Bus smart automation systems.

Energy Management



EZAUDIT

Lighting



741/11WH



L960W/12WH

Dimmers



4062E450UDN



32E2CFLDM

Motion Sensors



750WP

Airflow



ACES48R,SS

Timer Controls



2031VETR

Fan Speed Controllers



C2032E500F

C-Bus Control and Management System



5085DL,GF

Impress C2000 Plate Ranges

Impress is Now a Classic

Until now, Impress has only been available as a mechanism preloaded in our Slimline and Eclipse ranges. Due to the success and uptake of Impress, it now comes preloaded in our most popular C2000 range. It's available in one to six gang switch plates, and one or two gang architrave switch plates, with or without blue LED indicators.

The state-of-the-art Impress mechanism also has a whopping 20A/16AX rating – nothing

compares! The switching action occurs deep within the mechanism, greatly reducing noise, arc flash and carbon deposits around the switch.

Clipsal's Impress not only provides your customers with the latest innovation in push button switch operation, but also incorporates an easy to install retrofit solution. This will save you valuable time and in turn add value to your business.

Features

- Now comes preloaded in our most popular C2000 range.
- Shrouded terminals.
- One way/two way switching facility with loop terminal.
- 20A/16AX rating.
- Available with or without soft blue LED indicator.



C2032VAPBL,WE

visit clipsal.com/impress



450VC Corrugated Mounting Block

New Mount on the Block

Clipsal continues to innovate, with the introduction of the new 450VC mounting block for corrugated wall structures. The 450VC mounting block conveniently adapts Clipsal Weathershield GPOs and typical 84mm switches and sockets directly onto vertical corrugated wall cladding.

Available in two neutral colours of grey (450VC, GY) and white (450VC, WE), Clipsal's 450VC provides a practical solution for mounting switches on corrugated surfaces, while maintaining the IP rating of Clipsal WSC227/2 weather proof switches.



450VC,WE

Catalogue Numbers

450VC,WE
Blockmount corrugated, white

450VC,GY
Blockmount corrugated, grey

*Suits standard corrugated iron
(not mini orb or CGI mini)*

Upgraded Fan/Light/Heater Units

Turn Your Bathroom into an Oasis

The Clipsal Sunshine range of fan, light and heater combination units offer an ideal solution for your bathroom, where instant warmth and maximum comfort are a must. To optimise energy use and tailor the temperature to your individual requirements, the Sunshine 6500A allows you to select the heat output, only using the energy that is needed.

For added convenience, a powerful exhaust fan is incorporated into the unit. For those applications where only lighting is required, Clipsal provides a low energy, long life fluorescent lamp.

Clipsal engineers have also made some design changes to keep the Sunshine range as a market leader in fan/light/heater units. These include angled grille slots for improved aesthetics, centre CFL lamp to improve energy savings and increased clearance around the heat lamps for improved safety.

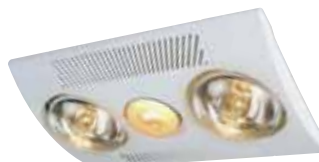
Features

- Energy saving CFL lamp.
- Selectable heat output.
- Angled grille slots - improved aesthetic design.
- Increased clearance around heat lamps - improved safety.

Catalogue Numbers

6500A
Threesome Fan/light/heater
(4 x 275W heat globes), 338m³/h

6600A
En Suite Fan/light/heater
(2 x 275W heat globes), 338m³/h



6600A



6500A

CFL Dimmer

The First True CFL Dimmer

Clipsal continues to prove itself as the market leader with the release of the first true CFL Dimmer option available on the Australian market. Now you can offer your customers greater lighting options, giving them the ability to dim their CFL lighting, while enjoying the benefits of saving energy.

Designed specifically to provide optimum performance

with Dimmable CFL lamps, Clipsal's new C-Thru CFL Dimmer is a separately switched modular dimming mechanism rated at 300W.

Utilising Clipsal's patented Trailing Edge Dimming Technology, the new CFL Dimmer incorporates a unique 'kick-start' feature, which ignites the lamp and overcomes CFL lamp strike limitations.

In addition, the performance has been optimised to ensure smooth, linear, flicker-free dimming across the control range. Best of all, you can make full use of the 300W CFL dimming power without the need for derating!

Clipsal's new C-Thru CFL Dimmers also offer considerable flexibility and can be used to control other types of loads such

as incandescent lamps, 240V halogen and dichroic lamps, and low voltage lighting using iron-core or electronic transformers.

The Clipsal C-Thru CFL Dimmers are an industry first, boasting true compatibility with Dimmable CFL lamps.



Features

- Based on Clipsal's Trailing Edge Dimming Technology.
- Suitable for use with Dimmable CFLs.
- Incorporates a 'kick-start' to ensure the CFL lamp strikes properly.
- Maximises usable dimming range.
- 300W power rating - no derating required.
- Complies with Australian and International EMC Standards.
- Suitable for other load types:
 - Incandescent (tungsten filament) lamps, 300W.
 - 240V halogen/dichroic lamps, 300W.
 - Low voltage downlights using electronic transformers 300W.
 - Low voltage downlights using iron-core transformers 200W.

CFL Dimmer (220-240V, 50Hz, 300W) Cat Nos.

Dimmer Mechanisms

- 32E2CFLDM**
30 Series Mechanism
- P2032E2CFLDM**
Prestige Mechanism
- 1920E2CFLDM**
Heritage Mechanism
- 4062E2CFLDM**
Saturn Series Mechanism

Dimmer Plates

- 32E2CFLD**
Standard Range
- 2032E2CFLD**
2000 Series
- C2032E2CFLD**
Classic Series
- SC2032E2CFLD**
Slimline Series
- SL2032E2CFLD**
Eclipse Series
- P2032E2CFLD**
Prestige Series
- 4062E2CFLD**
Saturn Series
- 4062E2CFLDN**
Saturn Series c/w Neon

Kinesis 100 Series Outdoor Motion Sensor

Sensors that Make Sense

Kinesis 100 Series passive infrared (PIR) sensor automates switching of outdoor lighting in response to movement; perfect for welcoming guests and deterring intruders. It offers a combination of security, safety and convenience for many outdoor residential, commercial and industrial applications.

Automated switching also ensures that lighting is only activated as

needed, making it an extremely valuable addition to any building and energy management strategy.

The Kinesis 100 Series outdoor motion sensor offers a highly flexible array of mounting options and can be mounted on flat surfaces, walls (vertical) or eaves (horizontal), as well as internal or external corner mounting.



Features

- 140° field of view.
- 12m detection range.
- Light-on time setting - preset lights to turn on for 4 seconds to 30 minutes.
- Adjustable 2 to 2000 lux.
- Quick connect wiring system for easy installation.
- Various mounting options - wall (vertical), under eave (horizontal) or corner (internal or external).
- Customisable detection area (zone mask supplied).
- Corner mounting kit included.
- Surge protected.
- IP44 weather proof rating.
- 12-month product warranty.

Catalogue Numbers

100SA140,WH
140° PIR Outdoor Motion Sensor,
IP44, White

100SA140,BK
140° PIR Outdoor Motion Sensor,
IP44, Black



100SA140,WH Wall-mount



Under-eave mount



100SA140,BK Wall-mount



Under-eave mount

Single Pole RCBO

Slim in Size, Big on Performance

Clipsal's new DIN mounted, 30mA RCBOs are available as single module devices to save valuable switchboard space.

If you require high performance circuit protection but you're limited for space, Clipsal's 30mA RCBO is the perfect solution.

Clipsal's combination RCD/MCBs are super slim at only 18mm wide, which allows for a greater number of RCD/MCBs to be installed into one enclosure.

Clipsal's RCBOs are top or bottom line and load compatible for ease of installation, with a 6kA fault level that is suited to both residential and commercial applications.

They're also ideal for retrofit installations where pole space is a problem.

Available in 10, 16, 20 and 25A current ratings.

Features & Benefits

- Only 18mm wide and available in four current ratings.
- Short circuit interrupting capacity of 6kA.
- Top or bottom line/load compatible for ease of installation.
- Rated at 240V, 30mA, type A, C-curve.
- One module wide – ideal for retrofit installations where space is limited.
- Two-pole safety feature allows switching of both Active and Neutral contacts.
- Trip free locking device (lockable "on" or "off" position).
- Compatible with Clipsal's 4LD Lock Dog.
- AS/NZS 61009 compliance.
- Two year warranty.



Catalogue Numbers

4RCBE210/30S
2 Pole 1M 10A 30mA Slim RCBO

4RCBE216/30S
2 Pole 1M 16A 30mA Slim RCBO

4RCBE220/30S
2 Pole 1M 20A 30mA Slim RCBO

4RCBE225/30S
2 Pole 1M 25A 30mA Slim RCBO

4BB5/26
Combined A+N busbar (26 pole)

4BB5
Connector (25mm² conductor)

Braided Industrial Extension Leads

Industry Leader in Power Safety

Clipsal remain as the innovative industry leaders, with the introduction of braided industrial extension leads. The braided shield is Earthed for extra protection, so your safety is never compromised. If you need performance in power with superior protection, insist on Clipsal's new 800 Series braided leads.

Clipsal's new braided industrial extension leads provide you with the additional protection against electric shock, especially in work environments where your power leads are exposed to being damaged or cut. The clever design of the Earthed braid will instantly activate RCD protection if the lead is cut, preventing exposure to dangerous Active wiring.

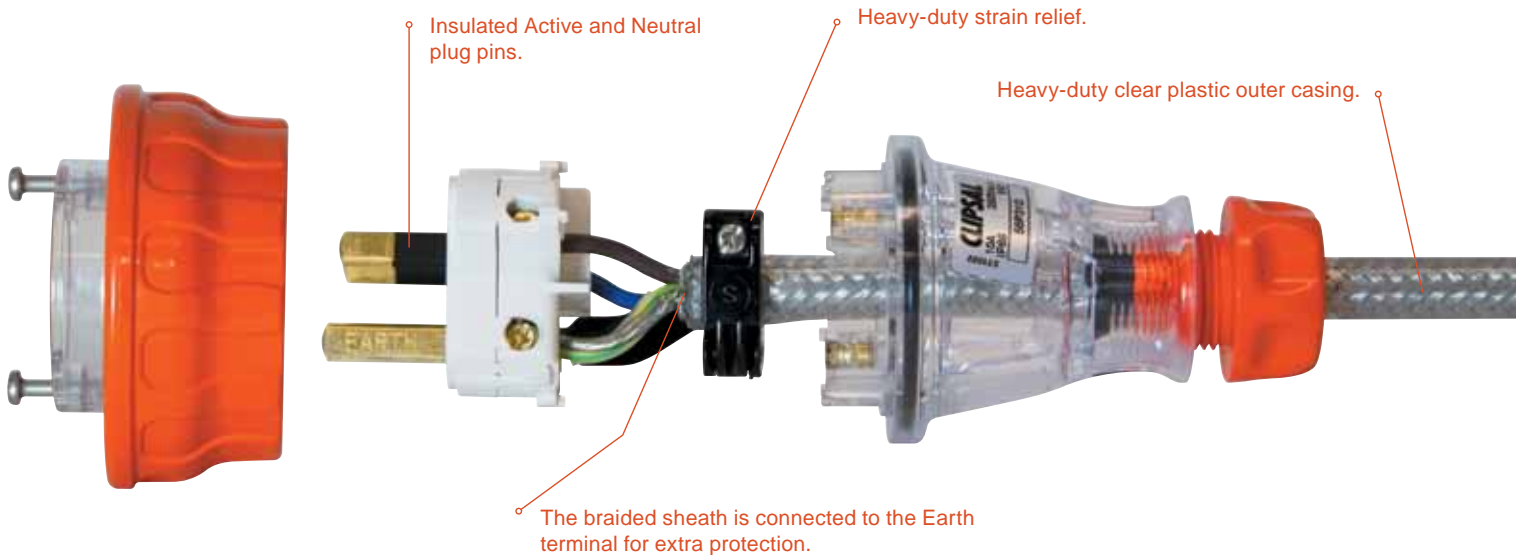
In addition, Clipsal braided industrial extension leads have multiple features and benefits; OH&S compliant Earthed braid, extra soft flex to avoid tangles, 56 Series plug and socket ends with an IP56 rating option available and multiple length options. Clipsal's 800 Series braided industrial leads provide superior safety and true performance in power!

Features & Benefits

- Earthed braid is a safety feature recommended for OH&S "duty of care".
- Available in a comprehensive range of lengths with 10Amp or 15Amp options.
- Tinned copper braid offers extra strength and protection.
- Triple insulated braided flex for conductor protection.
- Extra soft flex to avoid tangles.
- Clear plug, socket and lead – easy terminal and cable inspection.
- 56 Series IP56 rated plug and socket option available.
- 12 Month warranty.



800IND5/10/56



Catalogue Numbers

800IND5/10

5m 10Amp Braided Industrial Extension Lead

800IND10/10

10m 10Amp Braided Industrial Extension Lead

800IND15/10

15m 10Amp Braided Industrial Extension Lead

800IND5/15

5m 15Amp Braided Industrial Extension Lead

800IND10/15

10m 15Amp Braided Industrial Extension Lead

800IND15/15

15m 15Amp Braided Industrial Extension Lead

800IND20/15

20m 15Amp Braided Industrial Extension Lead

800IND5/10/56

IP56 5m 10Amp Braided Industrial Extension Lead

800IND5/15/56

IP56 5m 15Amp Braided Industrial Extension Lead

800IND10/15/56

IP56 10m 15Amp Braided Industrial Extension Lead

800IND15/15/56

IP56 15m 15Amp Braided Industrial Extension Lead

Spark-e-Mate

Installation Testing Made Easy

Forget about carrying around different testers for various applications. The Clipsal Spark-e-Mate has you tested and covered. One instrument does it all!

The Clipsal Spark-e-Mate performs comprehensive electrical wiring tests relevant to Australian and New Zealand Standards, from a single socket outlet, without the need for a separate Earth. Put it to the test... every test.

Clipsal's Spark-e-Mate can test for:

- Earth continuity
- Insulation resistance
- Polarity
- Correct circuit connections
- Earth fault loop impedance (without tripping RCDs)
- Residual current device (Earth leakage detector or Safety Switch)
- Extension leads and power accessories
- Supply voltage
- Mains frequency.

Features

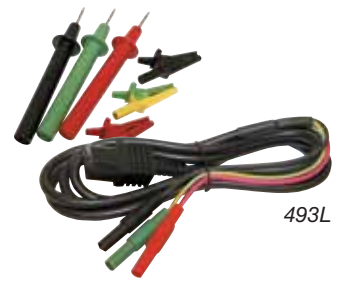
- Three-pin plug for socket testing and test probes for lighting.
- Dimensions: 220mm x 110mm x 45mm (HxWxD).
- Thermal plastic rubber protective cover.
- Complies with AS/NZS Standards: AS/NZS3300, AS/NZS3017, AS/NZS3260 (AS/NZS60950), AS/NZS3100, AS/NZS3350.1, AS/NZS61010.1 Category III.



Catalogue Numbers

493
Spark-e-Mate Multiple Function Tester- Earth, Insulation, Circuit, RCD'S, Voltage, Frequency- 240V 50Hz

493L
Test Lead with Clips and Probes



Queensland Meter Box

Meter Boxes that make the Grade

Due to recent wiring regulations implemented by the Queensland Electricity Connection and Metering Manual, Clipsal have made some important new changes to the 230DRAQ meter boxes.

These include a meter isolation lock off facility (in the "off" position only) with sealing facilities for single customer installations, specifically designed to meet the new Queensland Electricity Connection and Metering Manual requirements (Section 6).

Catalogue Numbers

230DRAQ
21 Module Switchboard and Meter Box, H680 x W470 x D280mm

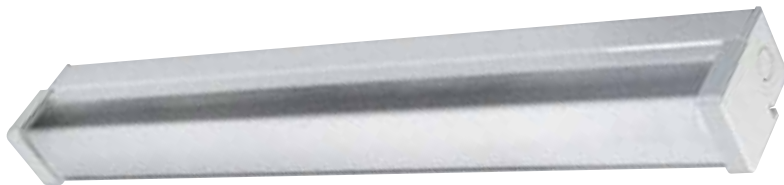
230DRAQTP
21 Module Switchboard and Meter Box (suitable for temporary supply AS/NZS3012 compliant), H680 x W470 x D280mm

230MI
Meter Isolator Enclosure. Pad lockable less MCB insulated panel mounting



Linear Diffused Battens

See the Light and Save Energy



DB118FREL

Linear diffused battens are ideal for any application where you require constant lighting for long periods of time, while consuming a minimal amount of energy.

Clipsal's Linear Diffused Battens are the perfect solution for residential and commercial applications.

They offer optimum lighting with a stylish diffuser and its electronic high frequency models offer substantial energy savings.

Features

- Body formed in steel white powder coating.
- Polycarbonate end caps and lamp holders.
- Colour 840 lamps included.
- End-to-end mounting possible, with pre formed cable entry punch-outs.
- Large terminal blocks for looping applications.
- Control options available DSI DALI.
- Emergency inverters on request.
- Supplied with electronic high frequency non-dimming ballasts.

Catalogue Numbers

DB118FREL

1 x 18W Linear Diffused - T8 Electronic

DB218FREL

2 x 18W Linear Diffused - T8 Electronic

DB136FREL

1 x 36W Linear Diffused - T8 Electronic

DB236FREL

2 x 36W Linear Diffused - T8 Electronic

Enclosed Downlights

Style with Safety

Downlights are the most stylish way to shed light for general applications. Now an integral part of any well designed interior, downlights not only illuminate a room, but can also be used to create dramatic lighting effects.

Clipsal's range of enclosed downlights give your customers a stylish lighting option, with the added safety benefit of intumescent material, which will seal the downlight in the event of overheating. They're available in White, Chrome and Satin Silver with gimble and fixed options.

Features

- Integrated intumescent material that seals the downlight and cuts out in the event of overheating.
- Complete with MR16 35W lamp.
- Transformer is included.
- Fixed or gimble options available.
- Cast aluminium construction.

Catalogue Numbers

991BWH

Fixed Round White

991BSS

Fixed Round Satin Silver

991BCH

Fixed Round Chrome

992BWH

Gimble Round White

992BSS

Gimble Round Satin Silver

992BCH

Gimble Round Chrome



991BWH



992BWH

Bulkhead Exterior Lights

Durable Outdoor Lighting

Clipsal's bulkhead exterior lights are a practical, affordable outdoor lighting solution for light commercial applications such as schools and car parks. Available in round or square models with opal or clear diffuser options, Clipsal's bulkhead exterior lights are manufactured from tough polycarbonate and have an IP65 rating so they can handle the harshest Aussie weather conditions.

Not to mention their impact resistance, making Clipsal bulkhead exterior lights an ideal alternative when weatherproof fluorescent battens are not suitable.

Features

- Non-dimmable electronic ballast.
- Cool white 2D lamp.
- Impact resistant.
- Round or square models.
- Clear or opal diffuser options.
- IP65 rated.

Catalogue Numbers

BHRC28
Outdoor Fluorescent Round, 28W, Clear Diffuser

BHR028
Outdoor Fluorescent Round, 28W, Opal Diffuser

BHSC28
Outdoor Fluorescent Square, 28W, Clear Diffuser

BHS028
Outdoor Fluorescent Square, 28W, Opal Diffuser



BHRC28



BHR028



BHSC28



BHS028

Emergency Lighting - DALI

Intelligent Emergency Lighting

Clipsal emergency lighting uses advanced LED lamp technology that provides unsurpassed energy conservation with extended lamp life. Clipsal emergency lights are easy to install, and their modern design ensures they compliment any modern interior. Now available with DALI control option.

Features

- Easy to install.
- Emergency light comes in two size reflector dishes in one box (85mm and 140mm).
- Dual rate constant current and charger, and high temperature nickel metal hydride batteries.
- Complete with flex and plug supplied and fitted.
- Complies with AS/NZS2293.
- D20 classification.

Catalogue Numbers

EMGDALI
SENTINEL Emergency - With DALI Control - SMPS dual rate charge NiMH battery with flex & plug and 85/140mm reflectors - complete with lamp.

EXITSMDALI
QUICKSMART Universal Exit - With DALI Control

EXITRECDALI
WAFER Recessed Edgelite Exit - With DALI Control



EMGDALI



EXITSMDALI



EXITRECDALI

Emergency Lighting - Maintained

The Leading Light for Emergencies

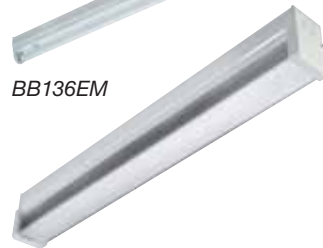
A new addition to Clipsal's extensive lighting range is Clipsal's emergency batten lighting. With the added benefit of an emergency ballast, Clipsal's emergency batten lighting remains on when the mains power supply is cut off. These lights comply with the safety requirements for commercial buildings and will provide adequate light to safely guide people out of buildings in emergency situations.

Features

- Maintained emergency ballast.
- Available as stocked item.
- Improved batten design.
- Prismatic diffuser.
- Simple end-to-end looping.



BB136EM



DB136EM

Catalogue Numbers

BB136EM
Batten Narrow Body 1x36W
Emergency

DB136EM
Diffused Batten Narrow Body 1x36W
Emergency

WB136EM
Batten Wide Body 1x36W
Emergency

WDB136EM
Diffused Batten Wide Body 1x36W
Emergency

Weatherproof Lighting – Tropic

Lighting to Survive the Elements

Clipsal's range of weatherproof Tropic lighting is ideal for any exterior lighting applications where excellent illumination and superior weather protection is required. Perfect for security lighting, factories, warehouses and public places, Clipsal's weatherproof lighting is an affordable budget range that offers high-level weather protection often found in more expensive lighting.



WPT118

Features

- Stainless steel lockable latches supplied as standard.
- IP65 rated.
- Electronic ballast as standard.
- T8 models only.

Catalogue Numbers

WPT118
Weatherproof IP65 T8 1x18W

WPT218
Weatherproof IP65 T8 2x18W

WPT136
Weatherproof IP65 T8 1x36W

WPT236
Weatherproof IP65 T8 2x36W

Energy Controller

Control your Energy Consumption

The Clipsal Energy Controller is a stand-alone energy device designed for retrofitting into commercial and industrial fluorescent lighting applications.

The controller saves energy consumed by linear fluorescent lamps operated with magnetic ballasts. This is achieved by reducing lighting power in up to three programmable stages, thereby providing greater flexibility and optimisation of light and power levels at each site. Take control of energy consumption with Clipsal's Energy Controller.



5610/240/4800

Catalogue Number

5610/240/4800
Energy Controller, 240V, 50Hz,
4800VA

C-Bus® Architectural Dimmers

High Powered Dimming Control

Clipsal now offers an innovative range of Architectural high-powered dimmers. These purpose designed commercial dimmers are the perfect platform upon which to build a lighting control strategy, offering a range of user-friendly dimmers that provide unrivalled flexibility, integration and energy management.

Clipsal's Architectural dimmers fully integrate into Clipsal's C-Bus automation system, providing access to Clipsal's world leading range of switches, touch screens, sensors and other C-Bus devices. They form part of a wider integrated approach to building lighting control, giving integrated capabilities with building management systems, SCADA data acquisition solutions and numerous other third party devices and applications.

With the use of a Clipsal C-Bus OPC server or a C-Bus BACnet gateway, integrating a Clipsal C-Bus Architectural dimmer with an existing building management system is straightforward, giving greater flexibility of control and further opportunities for energy savings.

Clipsal's range of Architectural dimmers are constructed to the highest standards and provide a long-term robust and reliable service in the most demanding environments. They've been cleverly designed without cooling fans or any other moving parts, which eliminates high maintenance costs and the whisper quiet operation will suit the most stringent requirements.

In addition, channel cards can be mixed together in a single dimmer if required, permitting wider flexibility in rating the whole dimmer. Each channel card has individual overload protection and is capable of sustaining full fault current. The channel cards also carry an individual load bypass switch, completely bypassing all electronics and allowing the load to be forced on.

Flexibility for the installer is the main advantage. They can upgrade the dimmer installation in the field without disturbing the wiring, minimising the cost impact of changes and allowing for fast, easy repair if needed.

Features

- Universal dimming.
- Modular dimmer cards - field replaceable.
- On-board RCD protection - complies with AS/NZS3000: 2007.
- Robust terminal strip and generous space for sub circuit termination.
- Optional output module for ballast control.
- Top, bottom and rear cable entry.
- Local C-Bus override control and indicator panel.
- Wall mounting bracket supplied.
- C-Bus or DMX-512 operation modes.
- Support for onboard lighting scenes.

Catalogue Number Methodology:

L51xxDyyUARzz
 xx: No. of Channels
 yy: Current Rating Per Channel (A)
 zz: No. of RCDs (RCD model only)

Examples:

L5112D10UA
 12 Channel C-Bus Architectural Dimmer, Universal Dimming - 10A Per Channel

L5106D5UAR3
 6 Channel C-Bus Architectural Dimmer, Universal Dimming - 5A Per Channel, 3 RCDs On-Board



L5103D10UA



L5112D5UA



L5106D10UA



L5106D5UAR3



L5112D10UAR6



L5103D10UAR1

C-Bus Architectural Dimmers	No. of Channels					
	12		6		3	
Current Rating Per Channel (A)	Non-RCD model	RCD model (No. of RCDs)	Non-RCD model	RCD model (No. of RCDs)	Non-RCD model	RCD model (No. of RCDs)
10	✓	✓ (6 - 2CH/RCD)	✓	✓ (3 - 2CH/RCD)	✓	✓ 1
5	✓	✓ (6 - 2CH/RCD)	✓	✓ (3 - 2CH/RCD)	✓	✓ 1

C-Bus® Multi-Room Audio

Multi-Faceted, Multi-Talented, Multi-Room Audio

C-Bus Multi-Room Audio (MRA) is a system of C-Bus networked audio devices that distribute audio sources to multiple locations or areas (known as zones). The concept behind multi-room, multi-source music is the ability to listen to different music in different zones at different volumes. A typical C-Bus MRA system consists of a matrix switcher, which co-ordinates what source is routed to each zone and several zone amplifiers, which amplify the audio and provide volume control for each zone.

C-Bus Multi-Room Audio (MRA) is a scalable system that can play music into a single location such as a balcony or patio, or can be installed to distribute different music sources to different rooms in a large installation. Regardless of the installation type, Clipsal MRA uses existing C-Bus switches and touch screens to control the music without the need to put additional controllers on the wall.

With different tastes of entertainment within a home, it makes sense to offer the ability to select from a range of audio material and choose where and when they may be played. From a simple news broadcast whilst getting ready for work to party music on the patio, the MRA system offers a full flexible range of sources and control.

The heart of the multi-room, multi-source audio system is the Clipsal Matrix Switcher. Produced in a black anodised aluminium finish, the matrix switcher is designed to fit in with audio visual equipment installed into entertainment cabinets or rack-mount installations. Two models of the matrix switcher are available; with and without MP3 streaming capabilities.

Even if the non-streaming model is chosen, it can be upgraded at a later date to include streaming. The LCD screen with backlight control on the front of the matrix switcher, can display the currently selected radio stations from the in-built radio tuners along with their signal strength. The front fascia also includes a 3.5mm socket for the connection of a personal music player as well as a user USB socket to accommodate MP3 files streaming from a USB drive.

The new C-Bus MRA Remote Amplifier is a robust 10 Watt per channel stereo amplifier. The amplifier can be installed in roof spaces or placed on top of the matrix switcher, where four can be ganged together to achieve full 19" width. The highly engineered black anodised aluminium finish of the new matrix switcher and new remote amplifier make them ideal for installation into home entertainment cabinets or racks.



Features & Benefits (Matrix Switcher)

- Black anodised aluminium finish to complement all equipment.
- Built-in dual AM/FM tuners.
- MP3 streaming and Internet radio capabilities.
- Quick inputs for USB drives and personal music players.
- Control from any C-Bus touch screen or switch.
- Supports up to 8 zones.
- Flexible wiring topology.

Features & Benefits (Remote Stereo Amplifier)

- Black anodised aluminium finish to complement AV equipment.
- 10 Watt per channel RMS.
- Can be ganged together.
- High temperature rated for installation into roof spaces.
- Local line level input.
- Digital audio and power supplied by matrix switcher.
- Standard 24V d.c. power socket for standalone applications.



560884/2E + (4 x) 560110R



560110MB



5600P24/1250

Catalogue Numbers

560884/2E

C-Bus Multi-Room Audio Deluxe Matrix Switcher. 4 stereo input sources, 2 AM/FM radio tuners and streaming audio & 8 digital audio outputs

560110R

C-Bus Multi-Room Audio Stereo Amplifier, Remote Mount Version, High temperature, 10 Watt / channel (RMS)

5600P24/1250

24V d.c. 1.25A power supply, Suits C-Bus 10 Watt / channel (RMS) amplifier. Used for standalone (single zone) applications

560884/2

C-Bus Multi-Room Audio Standard Matrix Switcher. 4 stereo input sources, 2 AM/FM radio tuners & 8 digital audio outputs

560100E

C-Bus Multi-Room Audio Blank Filling Enclosure. Used where 480mm width is required (e.g. 19" rack), Complements C-Bus 10 Watt / channel (RMS) amplifier

560110MB

In-ceiling mounting bracket, suits C-Bus 10 Watt / channel (RMS) remote amplifier. Used to fix amplifier to a beam in a roof space

C-Bus® DMX Gateway

The Gateway to Greater Control

The C-Bus DMX gateway is a new Clipsal product that allows the transfer of information, between a C-Bus network and controlled devices, using the DMX-512 protocol.

It is a one-way gateway that permits C-Bus input devices (such as wall switches, touch screens and PIRs) to control lighting devices with DMX interface capability; from theatrical lighting equipment and associated house lights, to third party lighting such as LED downlights and LED strip lights.

The DIN-rail mounted unit maps up to 12 C-Bus group addresses to up to 512 DMX slots.

Features

- Maps up to 12 C-Bus group addresses to any of the 512 DMX-512 slot addresses per C-Bus DMX gateway.
- DIN rail mounted (4m wide).
- Two C-Bus connections and one wired terminal block for DMX-512 interface connection.
- Powered from C-Bus (does not provide power to C-Bus network).
- Supplied with DMX interface cable.



5500DMX

Catalogue Number

5500DMX
C-Bus to DMX One Way Gateway,
4M Modules Wide. Includes 300mm
DMX interface cable

C-Bus® Wiser™ Home Control

Once there were Smart Homes, Now there are Wiser Homes

Tired of complex and confusing control methods that are required to run multiple systems and devices throughout the home? Thanks to Clipsal, intuitive control is here.

Wiser Home Control is the next generation of C-Bus. The system delivers an innovative level of functionality and connectivity throughout the home by seamlessly connecting different technologies, including: lighting control, security, air conditioning, audio-visual equipment, media players, motorised blinds and curtains.

Wiser's consistent and intuitive user-interface also allows you to operate everything with a simple touch. For example, lights are turned on or off with a light bulb icon; sound systems via a speaker icon; and sweep fans by a fan icon, etc.

The Wiser system architecture provides the ideal platform for supporting some of the most sought after features in the

automation market. With Ethernet and Internet capabilities, Wiser offers features not previously available in C-Bus devices, such as the monitoring and control of a home environment both locally or remotely over the Internet.

Features

- Ethernet and Wi-Fi based control of a C-Bus system.
- Built-in Ethernet router and Wi-Fi access point.
- Choice of user / interface devices.
- Easy to understand Wizard based user-interface graphics.
- Built-in scene, scheduling and logic programming modules.
- Displays up-to-the-minute news, weather, stocks and shares, etc. through RSS feeds.
- Dedicated iPhone/iPod touch App.

Benefits

- Monitor and control the home locally or remotely via the Internet.
- Seamlessly connects different technologies, including lighting, air-conditioning, multi-room audio, etc.
- Easily reprogrammable from outside a home/building by installers (via remote access).
- Control via selected mobile phones or other web-enabled devices (Wi-Fi or 3G).
- Control via email messages.
- Monitor and report power consumption.



5200PG

Catalogue Number

5200PG
Wiser Home Controller for C-Bus



Actassi Structured Cabling

An Evolution in Data

The Clipsal Category 6A UTP system is designed to support 10G Base T applications, and offers a great solution for an installation requiring high-speed and high bandwidth. This solution includes cable, patch panels, patch cables, modular jacks, as well as faceplates and cable management, while offering excellent headroom.

The Clipsal Category 6A UTP patched solution overcomes alien crosstalk (AXT) concerns through the use of shielded patch leads. This passive shielding helps prevent AXT at the patch panel. This system is

designed to meet AXT standards when installed in high-density, active equipment applications. The product is independently verified, and certificates are available on request. Clipsal Australia's R&D department have worked closely with Schneider Electric's R&D department to develop the connector and patch panel we see today. Along with the performance parameters that needed to be met, we have taken all the feedback from the industry to provide a panel that is installer and end user friendly.

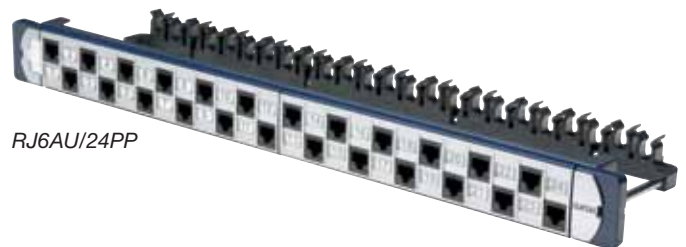
Category 6A UTP Patch Panels 24-Port

The Clipsal range of patch panels feature individual Category 6A modular jacks that are colour coded for both 568A and 568B standards.

This patch panel is loaded with 24-mechs and should be terminated using a 110 Tool (Clipsal 110 Tool recommended, TRJ45PDT).

Features

- Fully compliant with AS/NZS 3080, ISO/IEC 11801, and ANSI/TIA/EIA-568-B Connecting Hardware Standards.
- Powder-coated metal framework.
- Universal colour coding for 568A and 568B Standards.
- Removable rear cable management tray.
- Compatible with standard 19" equipment frames.
- Individual removable modular jacks and cable retention caps.
- Staggered design to eliminate AXT.
- Clear and flexible labelling system, numbered and blank sheets provided.
- Additional label refill sheets can be purchased separately, RJ6AU/24PPLS. Label printing software can be downloaded from clipsal.com/trade/downloads/software. This will enable you to print the labels onto the template.
- Australian design.

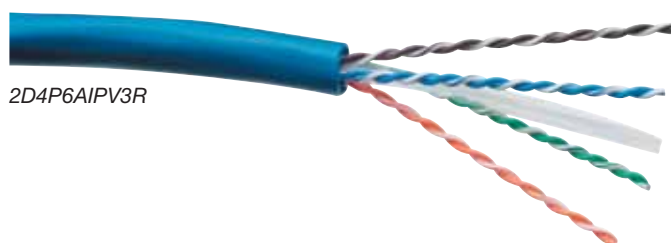


RJ6AU/24PP

Category 6A UTP Cable

The Category 6A UTP cable consists of 4 pairs of solid insulated copper 23 AWG (0.59mm) and is UL listed with a CM fire rating. It is designed for use as horizontal cabling and supplied in 305m (1,000ft) reels.

The Category 6A UTP cable provides a significant margin above the minimum Category 6A near end crosstalk (NEXT) requirement of TIA/EIA 568-B.3-1 and ISO/IEC 11801.



2D4P6AIPV3R

Specifications

- Rated temperature: **75°C**
- Product standard certification: **UL File E197794**
- Flammability test: **CM**
- Application: **Horizontal wiring in LAN**
- Reference standard: **EIA/TIA568 and ISO/IEC 11801, IEC61156-5**
- NVP %: **65.**

Mechanical Characteristics

- Test object: **Jacket**
- Test material: **PVC**
- Before tensile strength (Kg/mm2): **≥1.05**
- Bend radius (mm)
 - Installed: **75**
 - After installed: **40**
- Pulling tension: **110N (25lbf)**
- Storage temp: **-20 to 75°C**
- Operating temp: **-20 to 75°C**
- Installation temp: **0 to 58°C**

Category 6A UTP Jacks, Modular - Suits Clipsal Wall Plates

Clipsal's modular jacks are colour coded for both 568A and 568B standards.

This modular connector is designed to be terminated using a 110 Tool (Clipsal 110 Tool recommended, TRJ45PDT).

Features

- UL 940-0 rated.
- Accepts solid 22 - 24 AWG diameter conductors.
- Shuttered version protects from dust ingress and the insertion of foreign objects.

Benefits

- Fully compliant with AS/NZS 3080, ISO/IEC 11801 and ANSI/TIA/EIA-568-C Connecting Hardware Standards.
- Backward compatible with Category 5e and Category 6 products.
- Various colours for easier circuit identification.
- Can be used in multi-user telecommunication outlet applications (MUTO) and consolidation points (CP).
- Clear wire retaining caps allow for termination verification and assist in cable retention.



30RJ45SMA6A, WE



30RJ45SMA6AS, WE

Category 6A UTP Jacks, Keystone

These UTP modular jacks are colour coded for both 568A and 568B standards.

This keystone connector is designed to be terminated using a 110 Tool (Clipsal 110 Tool recommended, TRJ45PDT).

Features

- UL 94V-0 rated.
- Accepts solid 22 - 24 AWG diameter conductors.
- Shuttered version protects from dust ingress and the insertion of foreign objects.

Benefits

- Fully compliant with AS/NZS 3080, ISO/IEC 11801, ANSI/TIA/EIA-568-C Connecting Hardware Standards.
- Backward compatible with Category 5e and Category 6.
- Various colours for easier circuit identification.
- Can be used in multi-user telecommunication outlet applications (MUTO) and consolidation points (CP).
- Clear wire retention caps allow for termination verification and assist in cable retention.
- Suitable for use with the Clipsal Category 6A UTP patch panel (RJ6AU/24PP and RJ6AU/24PPS).



RJ45SMA6A, WE



RJ45SMA6AS, WE

Category 6A Patch Cord (LSZH)

The Clipsal Category 6A patch cord is a superior product delivering the best network performance when used in conjunction with other Clipsal Category 6A products. The patch cord is constructed of high grade cable and quality RJ45 plugs. It is designed to operate up to 500MHz, which enables it to operate successfully in a Category 6A environment.

Clipsal's Category 6A UTP solution uses an FTP patch cord to assist in mitigating alien cross talk (AXT). The sheath is low smoke zero halogen (LSZH).

Features

- UL LSZH rated jacketing.
- PE insulation on conductors.
- Designed to mitigate AXT.

Benefits

- Fully compliant to AS/NZS 3080, ISO/IEC 11801 and ANSI/TIA/EIA - 568 - C Series Channel and Link Standards.
- Performs to Category 6A International Standards.
- Comes in various lengths to assist with better cable management.
- Backward compatible with Category 5 and 6 products.
- Complies with LSZH requirements.



RJ6AF8A10LPL

In Desk Flip-up Soft Wired Outlet

Flipping Good Outlets

Clipsal in desk flip-up soft-wired outlets are ideal for any office or home environment where the convenience of a desktop power outlet is required. Neat and innovative, Clipsal's in desk flip-up power outlets provide a discreet and tidy flush appearance when not in use and their pop up action is sure to impress.

In addition, the ease of installation offered by the M3 system, with five-pole installation couplers and cabling, allows for the full advantages of a true 'plug and play' system.



MSWIDB4PTD

Saturn Integrated Outlet Fascias for M3

The Stylish M3 Outlet

Clipsal now offer a stylish Saturn power outlet option to complement their practical M3 Soft Wiring Solution. The outlet is double pole and auto switched with neon indicators. And when used in conjunction with M3 workstations, Saturn integrated outlet fascias provide an attractive, flexible "plug and play" option for the office environment.

Utilising cable ducting to desk and floor outlets, an M3 Wiring Solution provides convenient and accessible power and data to isolated workstations and perimeter walls, without unsightly messy cables to look at or trip over.



MM10SW-SN4



MM10SW-SN2

Slimline Integrated Outlet Fascias for M3

Low Profile Power

Clipsal's popular super thin Slimline power outlets are now available as part of the M3 Soft Wiring Solution. The Slimline integrated outlet fascias for M3 offer a stylish, low profile option for customers who require a soft wiring power solution. For added convenience and safety, the outlets are double pole with auto switching.

Provide your customers the practical "plug and play" convenience of M3 Soft Wiring, with a stylish Clipsal Slimline switch option.



MM10SW-SC4

MSC8050 Series Service Columns

Convenience at Your Service

The modern office environment often requires easy access to power and data outlets. Clipsal's MSC8050 Service Columns provide a simple and attractive means of distributing power, telephone and data to remote locations. They can be used as floor to ceiling or as ceiling to desk. Depending on your power, voice and data requirements. Optional configurations of single and two divisions are available.

MSC8050 Service Columns come in standard lengths of 2.8 metres with a natural anodised finish.

Features & Benefits

- Extruded aluminium finish.
- Removable lid for easy access.
- Suits full size outlets.
- Suitable for Category 5 and Category 6 data cabling.
- Supplied with four universal outlet shrouds.
- Supplied with floor and bench mount footplates.
- Fast wiring and easy installation.
- Conforms to AS/NZS3000.
- Precision lid cutting not required for outlets.



MSC80503N

Mini Trunking on a Roll

Our Trunking is on a Roll

Clipsal's mini trunking on a roll is a convenient trunking solution for small quantities of cable. Neat and tidy in appearance, Clipsal's mini trunking can be cut to exact lengths to suit your specific requirements. It comes standard in white and is available in 15 metre rolls; with 16 x 10mm and 25 x 16mm size options.

Coiled Mini Trunking – 15 Metre Lengths

- 16mm x 10mm rectangular duct, white.
- 25mm x 16mm rectangular duct, white.

Catalogue Numbers

MDEAP1610RT,WE
16 x 10mm Rectangular Duct, White

MDEAP2516RT,WE
25 x 16mm Rectangular Duct, White



MDEAP1610RT,WE

Reinforced Steel Channel Nut

No Loose Nuts

Clipsal's innovative reinforced steel channel nut incorporates a high tensile spring, which securely holds nuts in position when exposed to large amounts of vibration or excessive temperature change. Available in plated steel or high-grade stainless steel for exposure in harsh environments, Clipsal's reinforced steel channel nuts stay firmly secured in the most testing conditions. Suits all 41 x 41 channel models.

Features & Benefits

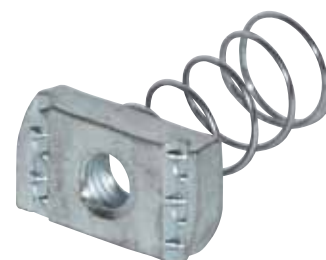
- Suits all standard 41 x 41 channels.
- Available in M10, M8 and M6 plated steel.
- Available in M10 and M8 304 stainless steel.

Catalogue Numbers

2521730
Reinforced Spring Nut M10 EZ

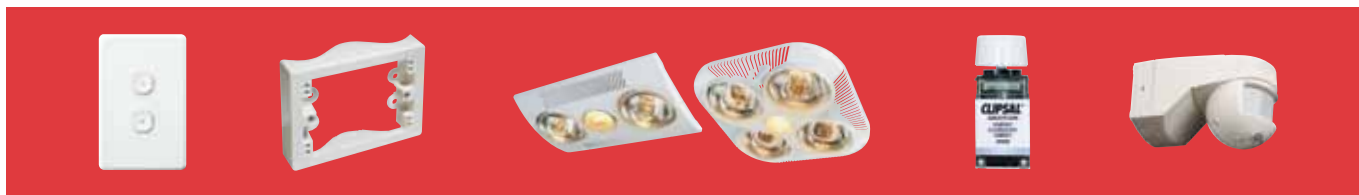
2521728
Reinforced Spring Nut M8 EZ

SZ10
Reinforced Spring Nut M10 55316



2521730

NEW PRODUCTS AT A GLANCE



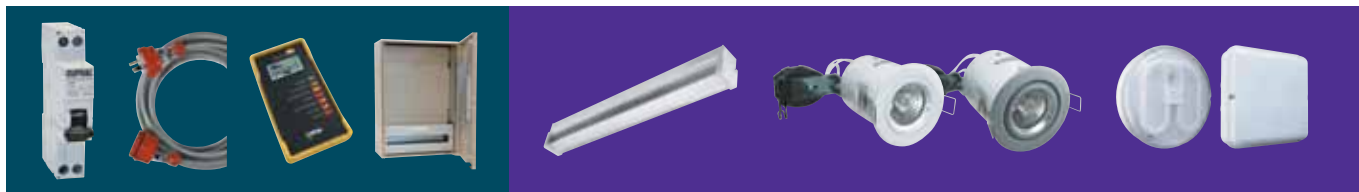
Impress
C2000 Range
Page 4

Corrugated
Mounting Block
Page 4

Upgraded
Fan/Light/Heater Units
Page 4

CFL
Dimmer
Page 5

Kinesis
Motion Sensor
Page 6



Single Pole
RCBO
Page 7

Industrial
Leads
Page 8

Spark-e
-Mate
Page 9

Queensland
Meter Box
Page 9

Linear Diffused
Battens
Page 10

Enclosed
Downlights
Page 10

Bulkhead
Exterior Lights
Page 11



Emergency
Lighting DALI
Pages 11-12

Weatherproof
Lighting - Tropic
Page 12

Energy
Controller
Page 12

C-Bus® Architectural
Dimmers
Page 13

C-Bus® Multi
Room Audio
Page 14

C-Bus DMX
Gateway
Page 15

Wiser Home
Control
Page 15

Cat 6A UTP Patch
Panels 24-Port
Page 16



Cat 6A UTP
Cable
Page 16

Cat 6A UTP
Jacks
Page 17

Cat 6A
Patch Cord
Page 17

In Desk
Flip-up Soft
Wired Outlet
Page 18

Saturn
Integrated
Outlet Fascias
for M3
Page 18

Slimline
Integrated
Outlet Fascias
for M3
Page 18

MSC8050
Series Service
Columns
Page 19

Mini
Trunking
on a Roll
Page 19

Reinforced
Steel
Channel Nut
Page 19

Clipsal Australia Pty Ltd

A member of Schneider Electric

Head Office

33-37 Port Wakefield Road, Gepps Cross,
South Australia 5094

PO Box 132, Enfield Plaza,
South Australia 5085

Telephone (08) 8161 0511
Facsimile (08) 8161 0900
Email plugin@clipsal.com.au
Internet www.clipsal.com

**National Customer Care Enquiries:
1300 2025 25**

**National Customer Care Facsimile:
1300 2025 56**

International Enquiries

International Sales and Marketing

Email export@clipsal.com.au

Schneider Electric (NZ) Ltd

38 Business Parade South, Highbrook,
East Tamaki, Manukau 2013,
NEW ZEALAND

Telephone + 64 9 829 0490
Facsimile + 64 9 829 0491
Internet www.schneider-electric.co.nz

Clipsal Customer Care

Freephone 0800 652 999
Freefax 0800 101 152
Email sales@nz.schneider-electric.com
Internet www.clipsal.co.nz

You can find this brochure and many others
online in PDF format at: clipsal.com

Follow the links off the home page or access
the following page directly:
clipsal.com/brochures

clipsal.com

Clipsal Australia Pty Ltd reserves the right to change
specifications, modify designs and discontinue items
without incurring obligation and whilst every effort is
made to ensure that descriptions, specifications and
other information in this catalogue are correct, no
warranty is given in respect thereof and the company
shall not be liable for any error therein.

♻️ printed on recycled paper

© Clipsal Australia Pty Ltd