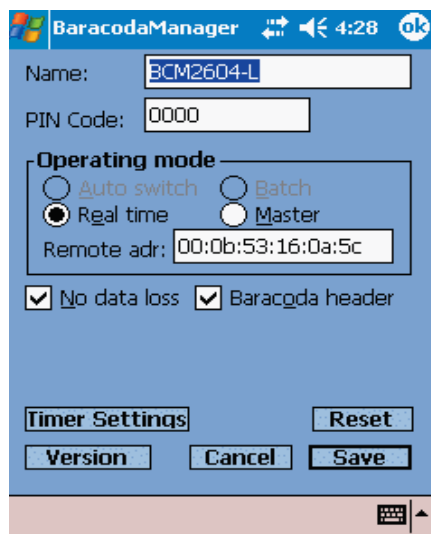




# BaracodaManager (Pocket PC)

*This document is to be used with BaracodaManager Pocket PC v3.20*

## BaracodaManager



### Requirements:

- OS: *Pocket PC 2002 & Pocket PC 2003*
- A compatible Bluetooth driver:
  - Widcomm Bluetooth stack*
  - Microsoft Bluetooth stack*
  - Broadcom Bluetooth stack*

## TABLE OF CONTENTS

<b>1. Introduction</b>	<b>2</b>
<b>2. Overview</b>	<b>2</b>
<b>3. Installation</b>	<b>4</b>
<b>4. Getting started</b>	<b>5</b>
<b>5. Functions</b>	<b>9</b>
5.1. Auto connection to a scanner	9
5.2. Disconnecting a scanner	9
5.3. Setting parameters of a scanner	9
5.3.1. Window settings for the Baracoda Pencil	11
5.3.2. Window settings for the Baracoda BL1000	12
5.3.3. Window settings for the Baracoda 2604 series	12
5.4. Uploading barcodes saved in a scanner's memory	14
<b>6. Plug-ins</b>	<b>15</b>
6.1. Terminal plug-in	15
6.2. KEmul plug-in	15
6.2.1. Using KEmul	15
6.2.2. KEmul settings	16

## 1. Introduction

The Baracoda Manager software allows you to easily operate the barcode reader, including:

- Automatic connection to your scanner
- Inserting the scanned barcode in a field that you select in your application program (Kemul plug-in) or displaying it
- Easy setup of your scanner parameters (PIN code, scanner name, shutdown timers...)
- Upload of the barcodes saved in your scanner.

Requirements:

- OS : PocketPC 2002 & PocketPC2003
- A compatible Bluetooth driver :
  - Widcomm Bluetooth stack
  - Microsoft Bluetooth stack
  - Broadcom Bluetooth stack

## 2. Overview

To set up the Baracoda Manager and to configure it with your scanner refers to the following sections:

- INSTALLATION
- GETTING STARTED.

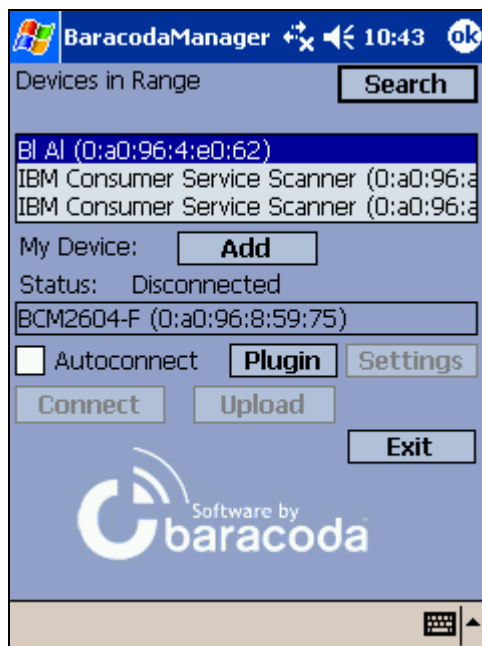
The OVERVIEW section shows you the Baracoda Manager when it is in regular operation: The Baracoda Manager has already been configured with your scanner and has been set to automatic connection mode (See section GETTING STARTED for details).

The Baracoda Manager automatically attempts to connect the scanner.

The Baracoda Manager icon appears on the task bar, when the Baracoda Manager is running.



To open the Baracoda Manager window, click on the Baracoda Manager icon and select **Show** in the menu. The following window appears.



The My Device section shows the configured scanner and its connection status. (Connected/Disconnected/Connecting).

The table below presents the main functionalities of the Baracoda Manager window (for details, see section FUNCTIONS):

Clicking on the button ...	allows you to...
Search	find all discoverable scanners (that is, which are within the Bluetooth radio signal range).
Add	add the selected scanner to My Device
Plugin	Enter the Plugin selector menu
Settings	set the parameters of the connected scanner.
Disconnect	disconnect the selected scanner.
Upload	upload barcodes previously stored in the selected scanner's non-volatile memory.
Exit	end the Baracoda Manager and save information on the configured scanner. The Bluetooth radio connection is cut. The scanner switches to stand-by mode.
Auto Connect check box	Set Auto Connect mode for the scanner: the Baracoda Manager automatically tries to connect to the scanner, at the beginning of the next session.

### 3. Installation

To operate your scanner, you need to complete the following tasks in sequence:

1. Installing the Bluetooth driver software (if not installed yet)
2. Installing the Baracoda Manager
3. Enabling the Bluetooth function
4. Launching and configuring the Baracoda Manager with your scanner.

To complete tasks 1 & 3, refer to your Bluetooth enabler (Compact Flash card, SD card, etc.) supplier documentation. For PocketPC with Bluetooth embedded, refer to your PocketPC documentation.

To complete task 2, follow steps below:

- Contact your Baracoda reseller to obtain the Baracoda Manager installation file for Pocket PC:
- Connect you PDA to the PC with its Usb cable and launch the install.exe file. (or copy the .cab file on your PDA and double-tap on it)
- Restart the PocketPC.

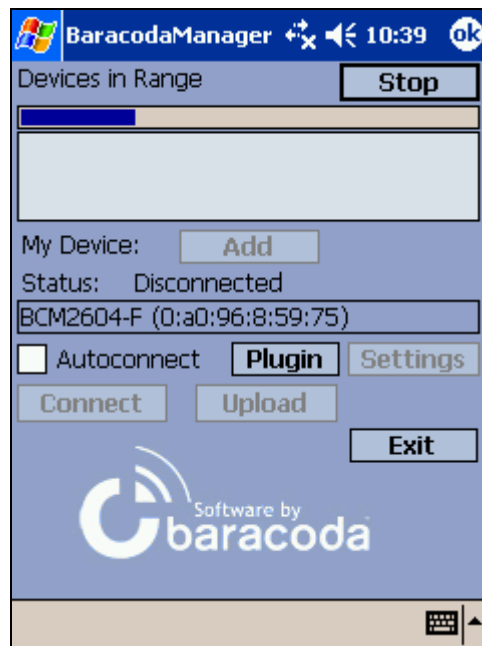
You are ready to complete the fourth task, configuring the Baracoda Manager with your scanner. See the next section, Getting started.

## 4. Getting started

In this section, you will learn how to configure the Baracoda Manager to connect to your scanner.

To configure your scanner:

1. Turn on your scanner and your PocketPC.
2. Start the BaracodaManager : Start > Programs > BM 3.20  
The BaracodaManager window appears:
3. Tap on the **Search** button: The Baracoda Manager displays a status bar while it is looking for discoverable scanners.

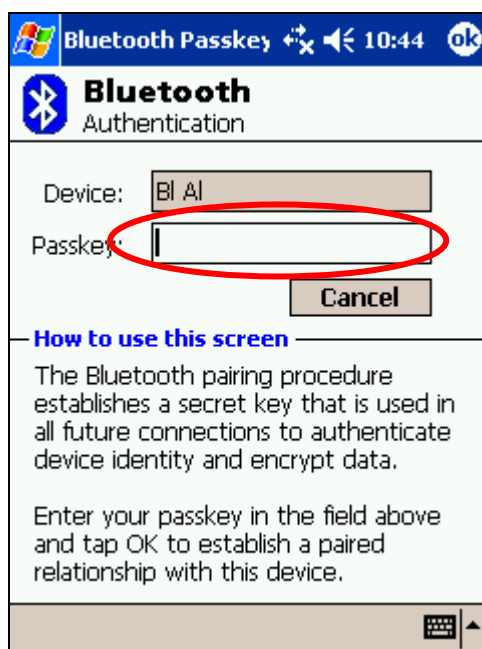


When the search is completed, the devices window lists the Bluetooth devices found :



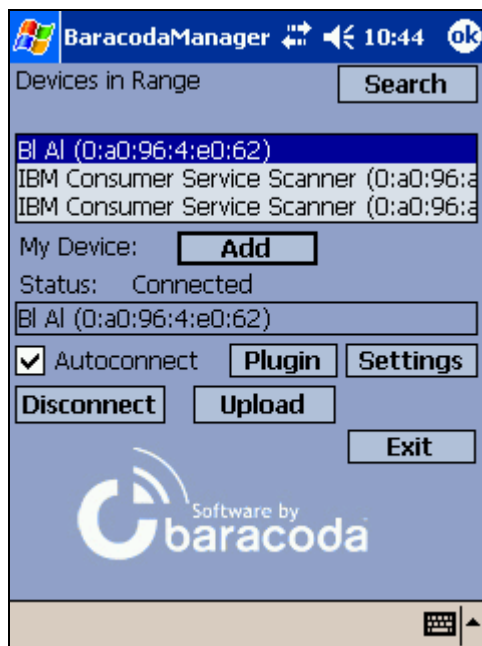
3. Select a scanner in the Devices window by tapping on it, and click on the **Add** button.

A Bluetooth authentication window appears on screen.



Enter the scanner PIN/Passkey code. The default passkey is 0000.

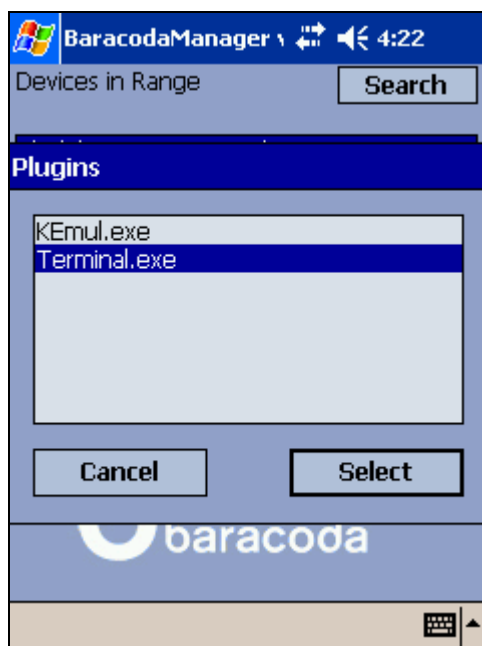
4. The BaracodaManager is configured with your scanner and appears in the **My Paired Devices** section of the screen.



- The connection status of your scanner (here, Connected)
- The name and Bluetooth address.
- Autoconnect is set to True by default (the box is checked)
- The default plug-in is Kemul (see section "FUNCTIONS").

5. To change the plug-in to be used for the scanner:

- Click on Plugin : A window appears.
- Select a plug-in (for more information refer to the Plug-in chapter of this document).
- Click on Select





6. When you end the first session of the Baracoda Manager, click on **Exit** to save the scanner Bluetooth Address. If the autoconnect box is checked, the Baracoda Manager will automatically try to connect to the scanner for each next session until you change this.

Notes:

If the scanner is switched off during a session (time out, low batteries, reset) and then switched on, the Baracoda Manager will reconnect to it if Autoconnect is checked.

If the scanner is moved out of range, barcodes can be memorized in its internal memory and downloaded in the Pocket PC when it reconnects. The scanner must be set to Real Time Mode with Barcodes Buffering enabled (see FUNCTIONS for details)

## 5. Functions

### 5.1. Auto connection to a scanner

Turn on your scanner  
Click on the search button  
Select your scanner in the list  
Click on the Add button and be sure that the auto connect box is checked.

### 5.2. Disconnecting a scanner

To cut the Bluetooth radio connection between the Baracoda Manager and the selected scanner, click on the Disconnect button. The scanner returns to discoverable (stand-by) mode. The Auto Connect mode is disabled.

### 5.3. Setting parameters of a scanner

Click on the Settings button. A Settings window appears.  
This window depends on the scanner you are using.

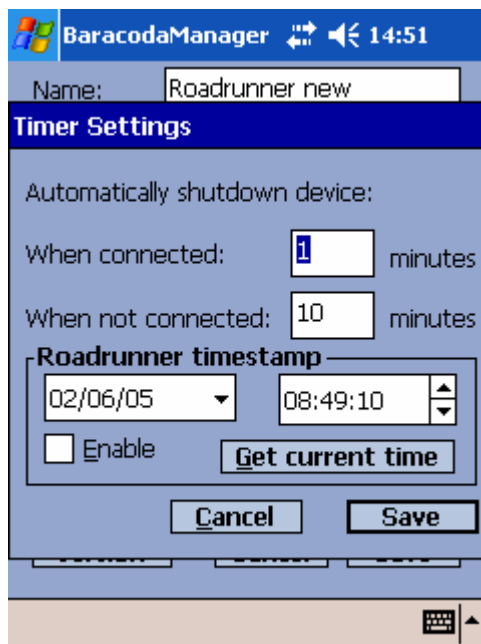
Each field or button you can find on the different settings windows is in those tables :

The field...	Shows and allows you to modify...
Name	the name of the scanner
PIN code	the pin code used to authenticate your scanner
Remote address	The Bluetooth address of the scanner
WAP url	Not implemented

Checking the box...	allows you to...
Batch	barcodes are stored in non-volatile memory and can be uploaded to your application later.
Real-time	the read barcodes are transmitted to your application immediately when the Bluetooth radio connection is active. If the connection is not established the barcodes are stored (70 EAN13 barcode type maximum) in the scanner's volatile memory and are sent when the connection is established or re-established. The stored barcodes are lost if the scanner turns off.
Master	The barcode automatically creates connection to the specified host device when you scan a barcode. Then the reader works as in real time mode. You have to fill the remote address field with the Bluetooth Device Address (BDA) of the host.
Barcode ack	Check the box to activate acknowledgment by the PDA
Enable Wap	Not implemented
Baracoda Header	Check the box to activate Baracoda header (requested to use BaracodaManager and its plugins).
No data loss mode mode	Beep scanner when the barcode is acknowledged

The button...	allows you to...
Cancel	close window with no change
Save	record and send the new parameters to the scanner.
Timer Settings	Display Timer Settings window (see below for details)
Reset	Restore factory settings of the reader.
Version	Shows you the version window (see below for details)

The timer settings window :



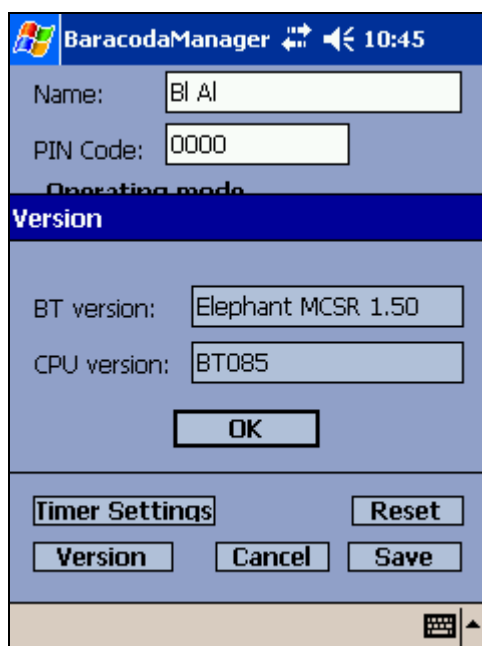
The following table shows the Shutdown Timer fields that you can set:

Field	Value
When connected	set the amount of time after which the scanner switches off, when the scanner is connected but not used.
When not connected	set the amount of time after which the scanner switches off, when the scanner is not connected and not used.

The settings in the RoadRunners timestamp case are available only for the RoadRunners family

Checking the box...	allows you to...
Enable	Transmit with every barcode scanned also the date and the hour the barcode was scanned. The user can manually set the date and the time in the Roadrunners or can press the button Get current time that will synchronise the internal timer of the RoadRunners with the internal timer of PDA

The version window :

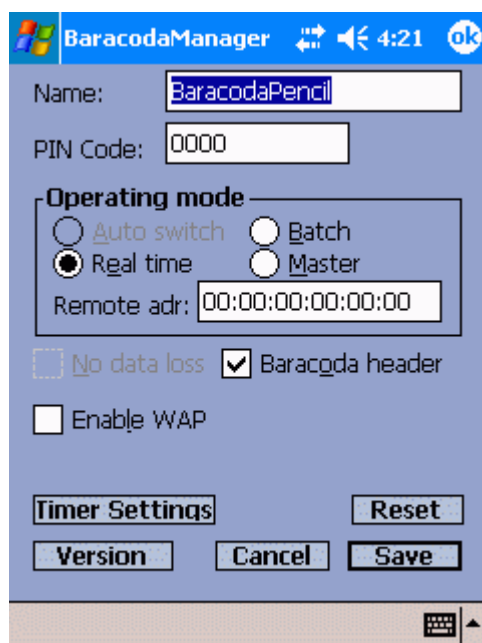


Field	Value
BT version	version number of the Bluetooth firmware
CPU version	Version number of the CPU firmware

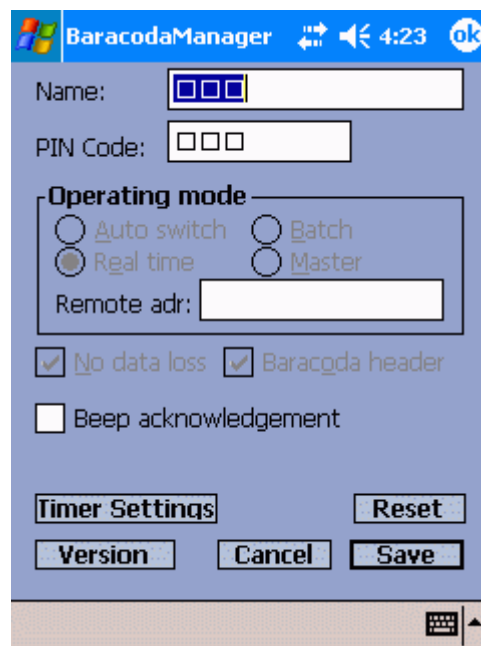
The OK button closes the window.

You will find below the three possible screenshots of the settings window, depending of the scanner you use.

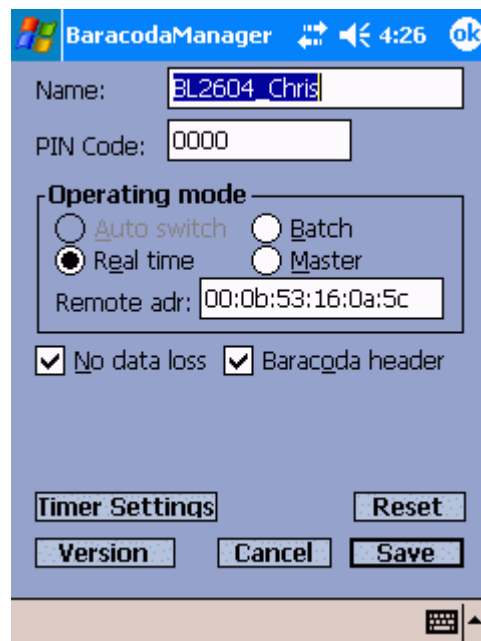
### 5.3.1. Window settings for the Baracoda Pencil



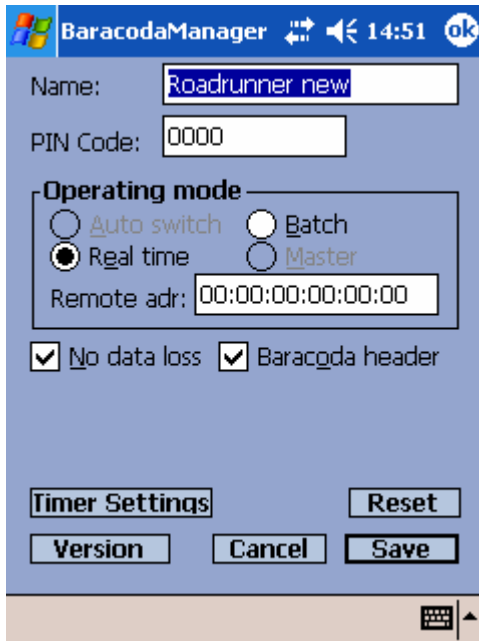
### 5.3.2. Window settings for the Baracoda BL1000



### 5.3.3. Window settings for the Baracoda 2604 series



### 5.3.3. Window settings for the RoadRunners



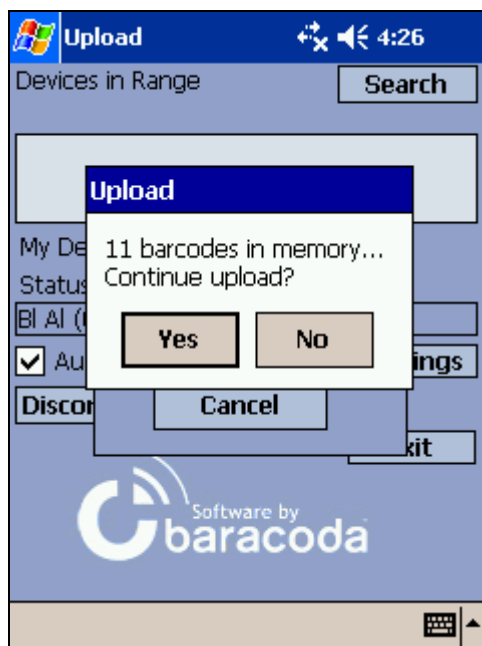
The screenshot shows the 'BaracodaManager' application window on a PocketPC. The title bar includes the Windows logo, the text 'BaracodaManager', and icons for help, volume, and a clock showing '14:51'. The main window has a blue background and contains the following fields and controls:

- Name:** A text field containing 'Roadrunner new'.
- PIN Code:** A text field containing '0000'.
- Operating mode:** A section with four radio buttons: 'Auto switch', 'Batch', 'Real time' (selected), and 'Master'.
- Remote adr:** A text field containing '00:00:00:00:00:00'.
- Checkboxes:** Two checked checkboxes labeled 'No data loss' and 'Baracoda header'.
- Buttons:** At the bottom, there are four buttons: 'Timer Settings', 'Reset', 'Version', and 'Cancel'. A 'Save' button is also present at the bottom right.

## 5.4. Uploading barcodes saved in a scanner's memory

Once connected to the scanner in Batch mode, click on the **Upload** button.

A window shows the number of stored barcodes in the scanner's memory



Click on the Yes button to upload the stored barcodes to a file and display the "Save as" window

Click on the No button to cancel and return to the main window



Click OK to start uploading

When upload is finished, the scanner's memory is automatically purged.

This file « upload.txt » has the following format :

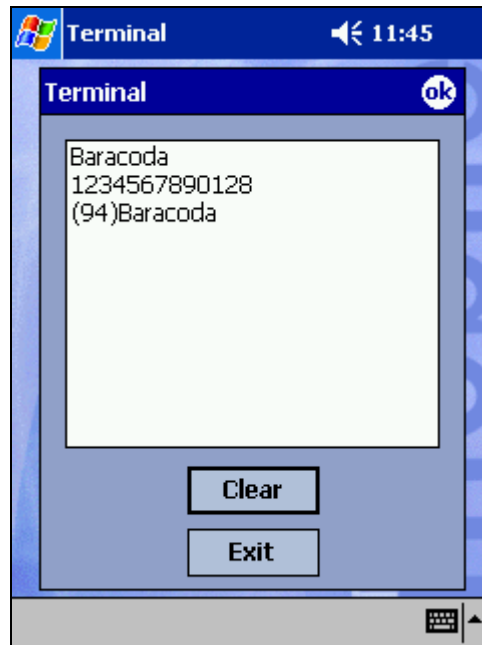
- <value of the first scanned barcode><CR>
- <value of the second scanned barcode><CR>

## 6. Plug-ins

To select your plugin with your connected scanner, click on **Plugin** and select the one you want.

### 6.1. Terminal plug-in

The Terminal function allows you to display the scanned barcodes in a window when reader is connected in Real Time mode.



### 6.2. KEmul plug-in

#### 6.2.1. Using KEmul

The KEmul runs automatically when being previously configured and with scanner connected in Real-time mode.

KEmul is a keyboard emulator : When you scan a barcode with your scanner, it is as if you typed it on your computer, and then typed [ENTER].

You can input the barcode read by the scanner into the selected field of your application.

For example, you can store the barcodes in an MS Excel, MS Word or any active field on screen.



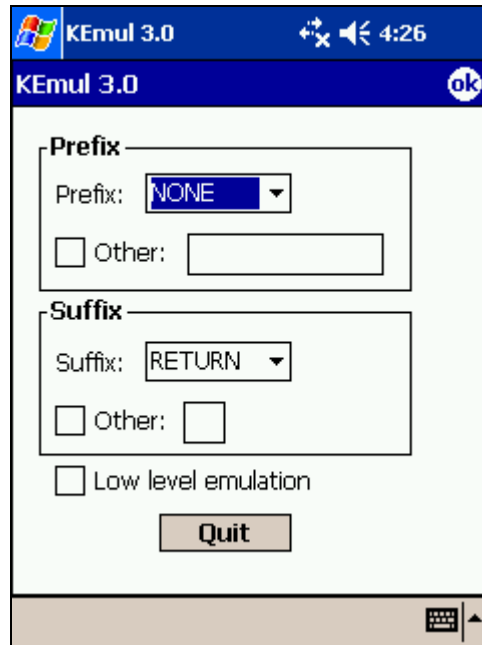
### 6.2.2. KEmul settings

By clicking the KEmul icon in the system tray (right down corner) you can :

- select Show and configure a predefined prefix and /or suffix for every received barcodes;
- select Exit and close the KEmul.

Modifying prefix and suffix:

By default, KEmul uses no prefix and a carriage return <CR> for suffix.



To modify or disable Prefix or/and Suffix, you can:

- select a predefined in the list : NONE; TAB; RETURN; SPACE
- or customize your own: check the **Other** box and type your character in the field beside.

Click OK in the top right corner of the window to save changes.

To close the KEmul, click on Quit.

---

Baracoda develops the BaracodaManager software for best convenience using Baracoda Bluetooth Scanners.  
For any question or support regarding this software, please contact your reseller.