



MOTOROLA RAZR I

pick a topic, get what you need



AT A GLANCE



START



HOME SCREEN & APPS



CONTROL & CUSTOMISE



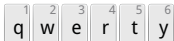
CALLS



CONTACTS



MESSAGES



TYPE



SOCIALISE



BROWSE



PHOTOS & VIDEOS

PLAYLISTS

MUSIC



BOOKS

44 West Street

LOCATE



WORK



CONNECT & TRANSFER



PROTECT



WANT MORE?



TROUBLESHOOT



SAFETY

-

-

#1

TOP TOPICS



SEARCH TOPICS



AT A GLANCE

a quick look

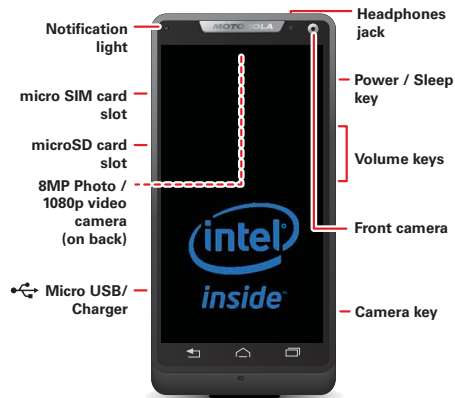


AT A GLANCE YOUR PHONE TOP TOPICS

YOUR PHONE

Your MOTOROLA RAZR™ i, with Intel Inside® offers fast web browsing, a large display in a compact design, strong materials and more:

- **Fast:** get fast web browsing and effortless multi-tasking with an advanced Intel® Atom™ processor.
- **Strong:** protected with Corning® Gorilla® Glass, DuPont™ KEVLAR® fibre and a water-repellent coating. KEVLAR® not available on all smartphones. See www.motorola.com for details.
- **Photographic:** instant launch camera and multi-shot mode.



TIPS & TRICKS

- **Start:** SIM in, charge up and register. See "**START**".
- **Top topics:** just want a quick hit of what your phone can do? See "**TOP TOPICS**".
- **More:** all the topics in this guide and so much more, right on your phone. Touch Apps > **Guide Me** > **HELP TOPICS**. Want even more? See "**GET MORE**".

SAR

This product meets the applicable limit for exposure to radio waves (known as SAR) of 2.0 W/kg (ICNIRP). The limits and guidelines include a substantial safety margin designed to assure the safety of all persons, regardless of age and health. The highest SAR values measured for this device are listed in the regulatory information packaged with your product.

Note: When using the product while worn on your body, maintain a distance of 2.5 cm (1 inch) from the body to ensure compliance with SAR requirements. Note that the product may be transmitting even if you are not making a phone call.



Menu

More



Back

Next





AT A GLANCE



AT A GLANCE YOUR PHONE TOP TOPICS

TOP TOPICS

Try these:

- personalise your Home screen: see "**REDECORATE YOUR HOME**".
- get fast access to main settings: see "**QUICK SETTINGS**".
- go online: see "**BROWSE**".
- learn about Google™: see "**THE BEST OF GOOGLE™**".
- get an app: see "**DOWNLOAD APPS**".
- be social: see "**SOCIALISE**".
- find a place: see "**LOCATE & NAVIGATE**".
- take a photo: see "**TAKE PHOTOS**".
- connect to Wi-Fi: see "**WI-FI NETWORKS**".
- watch a film: see "**FILMS**".
- protect your phone: see "**SCREEN LOCK**".
- get lots of help you need: see "**GET MORE**".

TIPS & TRICKS

- **Intuitive:** to get started quickly, touch Apps > **Guide Me** for interactive tutorials.
- **Helpful:** if you get stuck, there's always Apps > **Guide Me** > **HELP TOPICS**.



Menu

More



Back

Next





START

let's get up & running



START

CHARGE UP

BATTERY LIFE

REGISTER

THE BEST OF GOOGLE™

OLD PHONE TO NEW PHONE



Menu

More



Back

Next

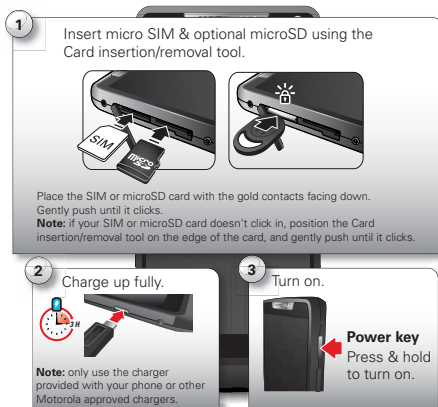


CHARGE UP

Micro SIM in, memory card in (optional), charge up, then power up. Use the SIM tool to push the SIM or memory card in until it clicks into place and locks.

Caution: Before using your phone, please read the safety, regulatory and legal information provided with your product.

Note: Certain apps and features may not be available in all countries.



TIPS & TRICKS

- **Power/Sleep key:** to make the screen sleep or wake up, press the Power key. To turn your phone on or off, press and hold it.
- **Notification light:** the notification light turns on when your phone starts charging and blinks when you have a new message or notification.
- **Battery:** squeeze every bit of juice out of your battery, see "**BATTERY LIFE**".

Note: This product uses a non-removable battery. The battery should only be replaced by a Motorola-approved service facility. Any attempt to remove or replace your battery, unless performed by a service representative, may damage the product and void your warranty.



START



START

CHARGE UP
BATTERY LIFE
REGISTER
THE BEST OF GOOGLE™
OLD PHONE TO NEW PHONE



Menu



Back

More



Next



BATTERY LIFE

Your phone is like a small computer, giving you tons of information and apps at UMTS speed. Depending on what you use, that can take a lot of power.

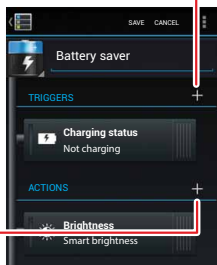
To see what's using up battery power, touch Apps (⋮) > **Settings** > **Battery**.

To set automatic rules to save power, touch Apps (⋮) > **SMARTACTIONS**, see "**SMARTACTIONS**".



Time remaining.

Add **Triggers** (like events, times or places) that start the action.



Add an **Action** (like silencing the ringer) to make it happen at the trigger.

TIPS & TRICKS

To save even more battery life between charges, you could reduce:

- recording or watching videos, listening to music or taking pictures.
- widgets that stream information to your Home screen, such as news or weather.
- unused online accounts that you registered: touch Apps (⋮) > **Settings** > **Accounts & sync**.
- Wi-Fi and Bluetooth™ use: touch Apps (⋮) > **Settings**, then touch the switch next to **Wi-Fi** or **Bluetooth** to turn them **OFF** when you don't need them.
- GPS use: touch Apps (⋮) > **Settings** > **Location services**, and deselect **GPS satellites**.
- display brightness: touch Apps (⋮) > **Settings** > **Display** > **Brightness** > (dimmer setting).
- display timeout delay: touch Apps (⋮) > **Settings** > **Display** > **Sleep** > (shorter setting).

**START****START**

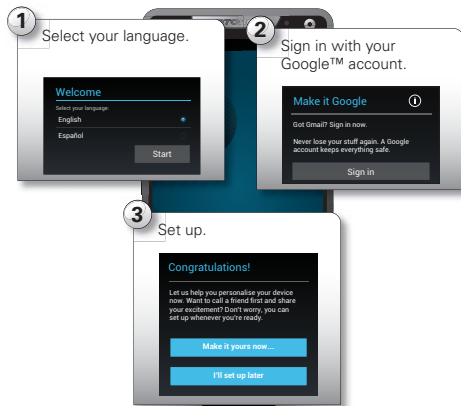
CHARGE UP
BATTERY LIFE
REGISTER
THE BEST OF GOOGLE™
OLD PHONE TO NEW PHONE

REGISTER

After you power up, create or log into a Google™ account to access all of your Google Mobile™ services. Registration is secure and only takes a few minutes.

Tip: To get help transferring your contacts, visit www.motorola.com/transfercontacts.

Note: This phone supports apps and services that use a lot of data, so make sure your data plan meets your needs. Contact your service provider for details.

**TIPS & TRICKS**

- **Wi-Fi network:** for faster Internet access, touch Apps (⌵) > ⚙️ **Settings** > **Wi-Fi**. Touch **ON** to turn Wi-Fi **ON** and search for networks. There's more in "**WI-FI NETWORKS**".
- **Reboot:** in the unlikely event that your phone becomes unresponsive, try a forced reboot. Press and hold both the Power and Volume down keys for more than 15 seconds.
- **Accounts:** to add, edit or delete accounts any time, touch Apps (⌵) > ⚙️ **Settings** > **Accounts & sync**. For more, see "**ADD OR DELETE ACCOUNTS**". To set up email accounts, see "**EMAIL**".

For help with your Google™ account, visit www.google.com/accounts.



Menu

More



Back

Next





START

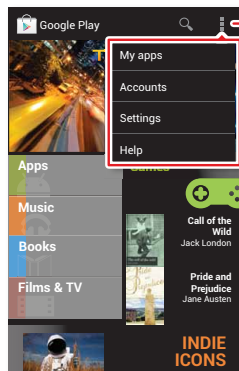


START

CHARGE UP
BATTERY LIFE
REGISTER
THE BEST OF GOOGLE™
OLD PHONE TO NEW PHONE

THE BEST OF GOOGLE™

Your whole world, organised and accessible. Browse, locate, watch, shop, play, work...Google has you covered. One account, access everywhere—phone, tablet, computer.



Search for apps.

Choose your account and settings.



On your computer and Android tablet, sign into your Google account for all your Google apps and Google Play content.

TIPS & TRICKS

- **Find out more about Google products:** see www.google.com/about/products.
- **Log into or open a Google account:** see the Google accounts page, visit www.google.com/accounts.
- **Find answers about Google products:** see www.google.com/support.
- **Download Google apps:** touch Apps ☰ > **Play Store**.
- **All in the cloud:** see "YOUR CLOUD".



Menu

More



Back

Next





START

START

CHARGE UP

BATTERY LIFE

REGISTER

THE BEST OF GOOGLE™

OLD PHONE TO NEW PHONE



Menu



Back

More



Next



MOTOROLA

OLD PHONE TO NEW PHONE

Are you switching from an Apple™ or Blackberry phone? Get all your important information set up on your new Motorola phone in a few easy steps. The **Welcome Home To Motorola** application transfers contacts, email addresses, calendar meetings, events, tasks, music, playlists, photos and videos from your old phone to your new Motorola phone.

Note: If you are switching from another Android™ phone, your Google™ account's contacts, events, Gmail™ and other settings start downloading as soon as you log into your Google account. If you are switching from another type of device, contact your service provider for assistance.

To move information from an Apple or Blackberry phone to your Motorola phone:

- 1 use your computer browser to navigate to www.markspace.com/welcomehome/ and download the free Microsoft™ Windows™ or Apple Macintosh version of the Welcome Home To Motorola application to your computer.
- 2 Install and run the application on your computer. **You can skip registration.**
- 3 Follow the instructions to transfer information from your old phone to your Motorola phone.

The Welcome Home To Motorola application prompts you to connect your old phone to the computer with a USB cable and back up the data you want to transfer.

Next, install the Welcome Home To Motorola app on your Motorola phone, connect the phone to your computer with a USB cable, then transfer the data onto your Motorola phone.



HOME SCREEN & APPS

you have quick access



HOME SCREEN & APPS

QUICK START: HOME SCREEN & APPS

REDECORATE YOUR HOME

GUIDE ME

SEARCH

STATUS & NOTIFICATIONS





DOWNLOAD APPS

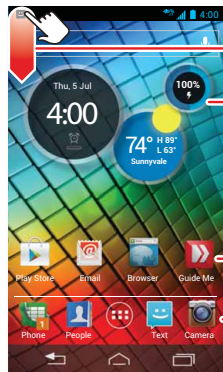
TAKE CARE OF YOUR APPS

UPDATE YOUR PHONE

QUICK START: HOME SCREEN & APPS

Start from the Home screen, to explore apps and more.

- **Home screen:** you'll see the Home screen when you turn on your phone or touch Home .
- **App & widget list:** to show all of your apps and widgets, touch Apps .
- **More:** to download more apps and widgets, touch Apps  >  **Play Store**.



Status & notifications

Click down for details.

Circles widget

Click up/down to see more.
Touch to open.




Shortcuts

Touch to open.

Favourites tray

Touch  to see all your apps & widgets.

TIPS & TRICKS

- **Shortcuts and widgets:** touch to open shortcuts (such as **People**). You can flick to scroll in some widgets (such as **Calendar**).
- **Pages:** to show other pages of shortcuts and widgets, flick the Home screen left. To delete pages from your Home screen, touch Home , touch and hold a page, then drag it up to **Remove**.
- **Uninstall:** to uninstall apps, touch Apps , touch and hold an app, then drag it to  **More options** and choose **Uninstall** (if available).



Menu

More



Back

Next





HOME SCREEN & APPS



HOME SCREEN & APPS

QUICK START: HOME SCREEN & APPS

REDECORATE YOUR HOME

GUIDE ME

SEARCH

STATUS & NOTIFICATIONS

DOWNLOAD APPS

TAKE CARE OF YOUR APPS

UPDATE YOUR PHONE



Menu

More



Back

Next



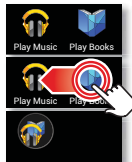
REDECORATE YOUR HOME

For quick access to your favourite things, customise your Home screen the way you want:

- **Change wallpaper:** touch and hold an empty spot on your Home screen to choose your wallpaper.

- **Create shortcut folders:** to create a folder of shortcuts on your Home screen, touch and hold a shortcut, then drop it on top of another shortcut.

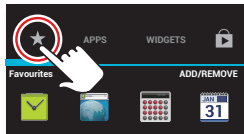
You can create a folder of apps that contains your music and books or whatever goes together for you.



- **Add widgets & shortcuts:** touch

Apps (☰), touch and hold the app or widget, then drag it to one of your Home screen pages.

To see all your apps and widgets, flick the menu to the left, or touch **APPS** or **WIDGETS** at the top. To see your **Favourites** touch ☆, then touch **ADD/REMOVE** to edit your favourite apps.



Tip: Some apps include widgets. To download apps, touch Apps (☰) > **Play Store**.

- **Resize widgets:** you can resize some widgets—touch and hold a widget until you feel a vibration, then release. Drag the blue diamonds at the edges to resize.

- **Move or delete widgets & shortcuts:** touch and hold a widget or shortcut until you feel a vibration, then drag it to another spot, another page or **Remove** at the top of the screen.

- **Add, rearrange or delete pages:** to show other pages of shortcuts and widgets, flick the Home screen right.

To add, reorder or delete pages, from your Home screen, flick right to show **Add a page**. Then, touch **Blank page** or **Start with a template**.

Touch **Manage pages**, then touch and hold a page to rearrange or remove. Touch **+** to add, or touch and hold an existing page and drag it to the left or right to reorder, or drag it up to **Remove**.

- **Ringtones and more:** for more about customising, see "**CONTROL & CUSTOMISE**".



HOME SCREEN & APPS



HOME SCREEN & APPS

QUICK START: HOME SCREEN & APPS

REDECORATE YOUR HOME

GUIDE ME

SEARCH

STATUS & NOTIFICATIONS

DOWNLOAD APPS

TAKE CARE OF YOUR APPS

UPDATE YOUR PHONE



Menu

More



Back

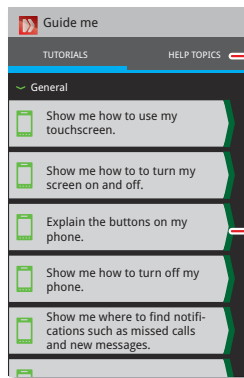
Next



GUIDE ME

To show interactive walk-through tutorials, touch **Guide Me**, from your Home screen.

Guide Me takes you through features on your phone. To choose a tutorial, just touch it.



Open help.

Tutorials

Touch a tutorial to watch it.

SEARCH

Search your apps, contacts, files, places and the web.

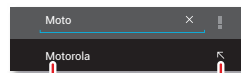
At the top of the Home screen, touch **Google** for a text search or for voice search.

- To choose what your search covers (such as apps and the web) or to change search location and history settings: in the search window, touch Menu > **Settings**.

- To add a suggestion to your search, touch .

For instance, to find *Motorola headsets*, you can enter *moto*, touch , then enter *he* and touch the suggested phrase.

- To become a super searcher, visit www.google.com/insidesearch.



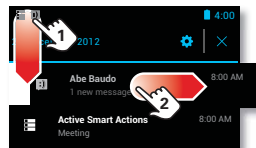
Search on just **Motorola**.

Choose **Motorola** and enter a second word.

STATUS & NOTIFICATIONS

At the top of the screen, icons on the left notify you about new messages or events (flick the bar down for details).

Tip: Touch to show **Settings**.





HOME SCREEN & APPS



HOME SCREEN & APPS

QUICK START: HOME SCREEN & APPS

REDECORATE YOUR HOME

GUIDE ME

SEARCH

STATUS & NOTIFICATIONS

DOWNLOAD APPS

TAKE CARE OF YOUR APPS

UPDATE YOUR PHONE

Icons on the right tell you about the phone's status:

network strength (= UMTS network)	battery charging/full
Wi-Fi in range/connected	mute
Bluetooth™ on/connected	vibrate
GPS active	alarm set
flight mode	warning

Network and Wi-Fi icons turn blue () when your phone exchanges data with your Google™ account.

Note: apps you download from the Google Play™ Store might show other icons in the status bar to alert you to specific events.

DOWNLOAD APPS

GOOGLE PLAY™

Google Play is a new entertainment hub full of music, films, books, apps and games. You can instantly access your content from all your Android devices.

Find it: Apps > Play Store

- **Find:** to search, touch in the top right-hand corner.
- **Review:** to show details and reviews for an app you found, just touch it.

Tip: for the full list of reviews, touch **See all** below the third review, then touch **Most helpful first** or **Options** to customise the list.

- **Download:** to download an app you've found, touch it to open details and then touch **Download** or the price.
 - **Share:** to share an app you've found, touch it to open details and then touch .
 - **Reinstall:** to show or reinstall apps you downloaded from the Google Play Store app, touch Menu > **My apps**.
 - **On a computer:** to find and manage apps from any computer, go to <http://play.google.com> using your Google™ account and password.
- There, you can browse apps on the big screen, manage your apps across multiple devices (such as a phone or tablet) and even set new apps to download to your devices.
- **Music, Books & Films:** you can also use the Google Play Store app to download "**MUSIC**", "**BOOKS**" and "**FILMS**".
 - **Help:** to get help and more, touch Menu in the top right-hand corner.

APPS FROM THE WEB

You can get apps from online app stores using your browser.

Tip: choose your apps and updates carefully, as some may impact your phone's performance—see "**CHOOSE CAREFULLY**".



Menu

More



Back

Next





HOME SCREEN & APPS



HOME SCREEN & APPS

QUICK START: HOME SCREEN & APPS

REDECORATE YOUR HOME

GUIDE ME

SEARCH

STATUS & NOTIFICATIONS

DOWNLOAD APPS

TAKE CARE OF YOUR APPS

UPDATE YOUR PHONE



Menu

More



Back

Next



Note: When installing an app, make sure you read the alerts that tell you what information the app will access. If you don't want the app to have access to this information, cancel the installation.

To let your phone install apps that are not from Google Play, touch Apps > **Settings** > **Security & screen** and check **Unknown sources**.

To download files from your browser, see "**DOWNLOADS**".

CHOOSE CAREFULLY

Apps are great. There's something for everyone. Play, communicate, work or have fun. But remember, choose your apps carefully. Here are a few tips:

- To help prevent spyware, phishing or viruses from affecting your phone or privacy, use apps from trusted sites, such as the Google Play™ Store.
- In the Google Play, check the app's ratings and comments before installing.
- If you doubt the safety of an app, don't install it.
- Like all apps, downloaded apps will use up memory, data, battery and processing power—some more than others. For example, a simple battery level widget will use less than a streaming music player app. After installing an app, if you're not happy with how much memory, data, battery or processing power it's using, uninstall it. You can always install it again later.

- Just like web browsing, you may want to monitor children's access to apps to help prevent exposure to inappropriate content.
- Certain apps may not provide completely accurate information. Take care, especially when it comes to personal health.

TAKE CARE OF YOUR APPS

From your Home screen, touch Apps , then flick left to scroll through apps. To close the apps screen, touch Home or Back .

- **Favourites:** to show your favourite apps, touch at the top of the screen. Then touch **ADD/REMOVE** to edit your favourite apps.

Tip: apps you download are added to your favourites.

- **Uninstall apps:** touch Apps > **Settings** > **Apps** > **ALL**, touch an app, then touch **Disable** or **Uninstall** in the top right of the screen (if available).

Disable removes the app from your menu. To **Enable** it, reopen this window and touch **Enable** (disabled apps are at the bottom of the list).

If an app locks up your phone as soon as you turn it on, restart in Safe Mode: turn off your phone, then turn it back on—when you see the "Motorola" logo during power-up, press and hold both volume keys until you see the Home screen, with **Safe mode** in the lower left of the screen. Then, try removing the app.



HOME SCREEN & APPS



HOME SCREEN & APPS

QUICK START: HOME SCREEN & APPS

REDECORATE YOUR HOME

GUIDE ME

SEARCH

STATUS & NOTIFICATIONS

DOWNLOAD APPS

TAKE CARE OF YOUR APPS

UPDATE YOUR PHONE

- **Reinstall apps:** to reinstall apps from the Google Play™ Store, touch Apps (☰) > **Play Store** > Menu (☰) > **My apps**. The apps you downloaded are listed and available for download.
- **Share, show or clear app details:** touch Apps (☰) > **Settings** > **Apps**. A bar at the bottom tells you how much app storage space you have left. At the top, touch the list of **DOWNLOADED**, **RUNNING**, or **ALL** apps, then touch an app in the list to show its details and storage usage. You can touch **Share**, **Clear data** or other options.

Tip: To quickly show these app details from your app screen: just touch and hold an app, drag it to **More options** at the top of your screen, then choose **App info**.

- **Show app data usage:** to show which apps are using the most data, touch Apps (☰) > **Settings** > **Data usage**. For more, see "**DATA USE**".

UPDATE YOUR PHONE

Use your phone or computer to check, download and install phone software updates:

- Using your phone:
If your phone notifies you about an update, follow the instructions to download and install it.
To manually check for updates, touch Apps (☰) > **Settings** > **About phone** > **System updates**.
Your phone downloads updates over your Wi-Fi connection (if available) or mobile network.
We recommend that you download updates when you have a Wi-Fi connection. Remember, these updates can be quite large (25 MB or more) and may not be available in all countries. If the mobile network updates are not available in your country, update using a computer.
- Using your computer:
on your computer, go to www.motorola.com/support and check the "Software" links. If an update is available, just follow the installation instructions.



Menu

More



Back

Next





CONTROL & CUSTOMISE

how it acts & looks



CONTROL & CUSTOMISE

QUICK START: CONTROL & CUSTOMISE

ON, OFF, LOCK & UNLOCK

TOUCH

PRESS

SPEAK

CUSTOMISE

QUICK SETTINGS

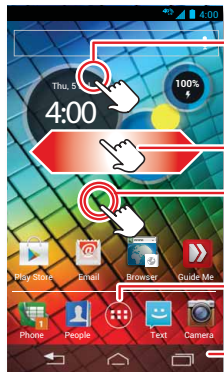
SMARTACTIONS™

ACCESSIBILITY

QUICK START: CONTROL & CUSTOMISE

Take control of your phone:

- **Touch:** it's all in the touch. Simple gestures and touch keys to move about.
- **Speak:** tell your phone what you want—touch Apps (⋮) > **Voice commands**.
- **Customise:** change notifications or display settings—flick the status bar down and touch .



Touch to open.

Touch & hold to move or delete.

Flick left to open or create pages.

Flick right to open **Quick settings**.

Touch & hold an empty spot to change wallpaper.

See your apps & widgets.

Back (one screen)

Home

Recent apps

TIPS & TRICKS

- **Touch:** choose an icon or option.
- **Touch & hold:** move items on the Home screen, or open options for items in lists (such as **People**).
- **Drag or flick:** scroll slowly (drag) or quickly (flick).
- **Pinch or double-tap:** zoom in and out on websites, photos and maps.
- **Twist:** twist a map with two fingers to rotate it, and pull two fingers down to tilt it.
- **Speak:** touch in a search window, in a keypad or Apps (⋮) > **Voice commands**.
- **Ringtone for a contact:** to set a ringtone for a contact, touch Apps (⋮) > **People**, touch the contact, then touch Menu > **Set ringtone**.
- **Quick settings:** to change **Phone ringtone**, **Wi-Fi**, **Bluetooth**, **GPS**, **Flight mode**, **Mobile data** and **Phone lock settings**, flick the Home screen right. Then, touch the switch to turn **ON** or **OFF**.
- **Home screen:** for more about changing your Home screen, see **"REDECORATE YOUR HOME"**.



Menu

More



Back

Next





CONTROL & CUSTOMISE



CONTROL & CUSTOMISE

QUICK START: CONTROL & CUSTOMISE

ON, OFF, LOCK & UNLOCK

TOUCH

PRESS

SPEAK

CUSTOMISE

QUICK SETTINGS

SMARTACTIONS™

ACCESSIBILITY



Menu

More



Back

Next



ON, OFF, LOCK & UNLOCK

Your touchscreen is on when you need it, and off when you don't:

- **Screen off & on:** press the Power key to turn the screen off & on.

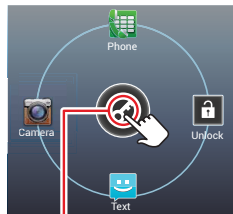
Note: During a call, your touchscreen might stay dark if the sensor just above it is covered. Don't use covers or screen protectors (even clear ones) that cover this sensor.



- **Screen lock:** to unlock the screen, touch and flick to . To add a password or facial recognition security to your unlock screen, touch Apps >

Settings > **Security & screen lock** > **Screen lock**. See "**SCREEN LOCK**".

- **Screen timeout:** to change your timeout (screen locks automatically), touch Apps > **Settings** > **Display** > **Sleep**.



Touch and flick to:

Unlock

Text

Phone

Camera

TOUCH

Find your way around:

- **Back:** touch Back to go to the previous screen.
- **Home:** touch Home to return to the Home screen. On your first Home screen page, touch Home to show all the pages.
- **Recent apps:** touch Recent to show your recent apps, and touch an app to reopen it. To remove an app from the list, flick it left or right. To scroll the list, flick up or down.
- **Menu:** when Menu appears in the corner of the screen, you can touch it to open options for the current screen.

Lost or stuck? If you're not sure what to do next, try one of these:

- to **open** a text message, see contact details or open items in a list, touch the message, contact or item.
- to **show options** for a list item (if available), touch and hold the item.
- to **show a menu** for the current screen, touch Menu in the corner of the screen (if available).
- to **return Home** to the Home screen, touch Home .
- to **go back** just one screen, touch Back .
- to **reopen** an app you closed, touch Recent and touch the app in the list.



CONTROL & CUSTOMISE



CONTROL & CUSTOMISE

QUICK START: CONTROL & CUSTOMISE
ON, OFF, LOCK & UNLOCK

TOUCH

PRESS

SPEAK

CUSTOMISE

QUICK SETTINGS

SMARTACTIONS™

ACCESSIBILITY



Menu

More



Back

Next



- to **reboot** an unresponsive phone, press and hold both Power and Volume down keys for more than 15 seconds.

PRESS

POWER KEY

Press and hold the Power key to choose **Power off**, **Sleep** (no Wi-Fi connections), **Flight mode** (no network or other connections), vibrate }{ or silent 🔇.

To conserve battery, prevent accidental touches or when you want to wipe smudges off your touchscreen, put the touchscreen to sleep by pressing the Power key. To wake up the touchscreen, just press the Power key again.

Tip: To make the screen lock when it goes to sleep, see '**SCREEN LOCK**'.

CAMERA KEY

Press the Camera key to instantly open the camera, and to start taking photos or videos, see "**PHOTOS & VIDEOS**".

To take a photo, press the Camera key then press the Camera key again or touch 📷.



To take photos in rapid succession, press the Camera key, touch 📷 **Modes** and select **Multi-shot**, then touch 📷.

To record a video, press the Camera key and touch 📹; then touch 🛑 to start or stop recording.

VOLUME KEYS

Your volume keys help in a few ways:

- **Ringer volume:** press the keys on the Home screen, or press them when your phone is ringing to silence it.
- **Earpiece volume:** press the keys during a call.
- **Music/video volume:** press the keys during a song or video.

SPEAK

Just tell your phone what you'd like:

Tip: speak naturally but clearly, like using a speakerphone.

- **Dialling and commands:** touch Apps ☰ > 🗣️ **Voice commands**. To dial, say "Call" and then a contact name or phone number. Or, say a command such as "Send Text", "Go to" and app, or "Help" for voice command help.

To choose the confirmations and prompts you want to hear, touch Apps ☰ > 🗣️ **Voice commands**, then touch ⚙️ in the top right of the screen.



CONTROL & CUSTOMISE



CONTROL & CUSTOMISE

QUICK START: CONTROL & CUSTOMISE

ON, OFF, LOCK & UNLOCK

TOUCH

PRESS

SPEAK

CUSTOMISE

QUICK SETTINGS

SMARTACTIONS™

ACCESSIBILITY



Menu

More



Back

Next



- **Search:** enter text in the Google search box at the top of your Home screen, or touch to search by voice.

To change your voice search and text-to-speech settings, touch Apps > **Settings** > **Language & input**.

- **Text entry:** on a touchscreen keyboard, touch , then speak your message. You can also speak punctuation.

Tip: To make your phone read out loud, see "TALKBACK".

CUSTOMISE

Customise your phone's sounds and appearance:

- **Ringtone and notifications:** to choose ringtones or notifications, touch Apps > **Settings** > **Sound**.
- **Vibrate or silent:** to choose whether your phone vibrates for incoming calls, touch Apps > **Settings** > **Sound**. Choose **Silent mode** to set whether it vibrates when you set the lock screen slider to silent. Tick **Vibrate and ring** to make it vibrate when the ringer is not silent.
- **Ringtone for a contact:** to set a ringtone for a contact, touch Apps > **People**, touch the contact, then touch Menu > **Set ringtone**.
- **Volume:** to set volume, just press the volume keys on the Home screen (ringtone volume), during a call (earpiece volume) or while playing music or a video (media volume).

- **Message alert:** to change your new message notification, touch Apps > **Text** > Menu > **Settings**, then choose **Notification settings**.
- **Display settings:** to change brightness, animation and other display settings, touch Apps > **Settings** > **Display**.
- **Rotate:** in many apps, the touchscreen switches from portrait to landscape when you rotate your phone. To turn this on or off, touch Apps > **Settings** > **Display** > **Auto-rotate screen**.
- **Home screen:** to change your wallpaper, touch and hold an empty spot on your Home screen. For more, see "REDECORATE YOUR HOME".
- **Language and region:** to set your menu language and region, touch Apps > **Settings** > **Language & input** > **Locale**.



CONTROL & CUSTOMISE



CONTROL & CUSTOMISE

QUICK START: CONTROL & CUSTOMISE

ON, OFF, LOCK & UNLOCK

TOUCH

PRESS

SPEAK

CUSTOMISE

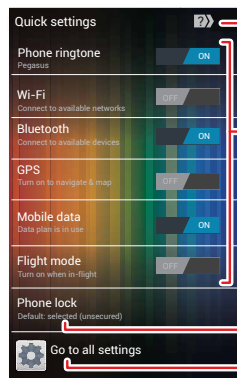
QUICK SETTINGS

SMARTACTIONS™

ACCESSIBILITY

QUICK SETTINGS

To change **Phone ringtone**, **Wi-Fi**, **Bluetooth**, **GPS**, **Mobile data**, **Flight mode** and **Phone lock** settings, from the Home screen flick right. Then, touch the switch to turn **ON** or **OFF**.



Learn more about quick settings.

Turn setting
ON or **OFF**.

Change **Security** settings.

Open **Settings** app.

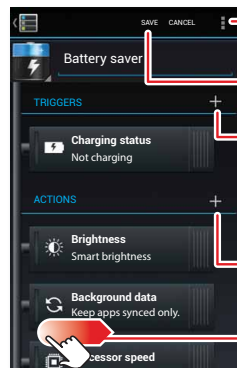
SMARTACTIONS™

Wish your phone could automatically reply to texts when you're driving, silence your ringer during meetings and conserve your battery when it runs low? It can. Smart Actions can automate actions you take on your phone.

Smart Actions suggests actions to automate, based on how you use your phone. When you see a suggestion in the status bar, flick the bar down to accept or delete it.

To open actions, touch Apps > **SMARTACTIONS**.

- To create an action, touch **+**.
- To turn an action off or on, open it and touch **OFF** or **ON** at the top.
- To stop smart actions suggestions, touch Menu > **Settings** and deselect **Suggestion notifications**.
- For help in **SMARTACTIONS**, touch Menu > **Help**.



Change the icon or name.

Save your changes.

Add **Triggers** (like events, times or places) that start the action.

Add an **Action** (like silencing the ringer) to make it happen at the trigger.

Deactivate triggers or actions by dragging them to the right.



Menu

More



Back

Next





CONTROL & CUSTOMISE



CONTROL & CUSTOMISE

QUICK START: CONTROL & CUSTOMISE

ON, OFF, LOCK & UNLOCK

TOUCH

PRESS

SPEAK

CUSTOMISE

QUICK SETTINGS

SMARTACTIONS™

ACCESSIBILITY

ACCESSIBILITY

See, hear, speak, feel and use. Accessibility features are there for everyone, helping to make things easier.

Note: For general information, accessories and more, visit www.motorola.com/accessibility.

VOICE RECOGNITION

Just tell your phone what you'd like to do—dial, browse, search, send a message and a whole range of other actions and commands. Check it out—touch Apps >

Voice commands and see **"SPEAK"**.

TALKBACK

Use **TalkBack** to read out loud—your navigation, your selections, even your books.

To turn on **TalkBack**, touch Apps > **Settings** > **Accessibility** > **TalkBack**, then touch at the top to turn it to .

Note: You might need to download text-to-speech software (data charges may apply).

To use **TalkBack**:

- **Menus and screens:** touch an item in a menu or screen—your phone speaks the name.
- **Dialler & text entry:** start typing—your phone speaks each number or letter.
- **Notifications:** flick the status bar down—your phone speaks all of the notifications.

- **Books & more:** open a book, file, message and more—it's read out loud (app dependent).

Tip: Navigate through your apps and menus to hear how voice readouts work on your phone.

Take **TalkBack** to the next level—see **"EXPLORE BY TOUCH"**.

EXPLORE BY TOUCH

Use **Explore by touch** to expand **TalkBack** and have your touches read out loud as you move your finger around the screen.

To turn on **Explore by touch**, turn on **TalkBack** then touch Apps > **Settings** > **Accessibility** > **Explore by touch**, then touch at the top to turn it to .

Explore by touch changes some touch gestures slightly so that the location of your touches can be read out loud. Just follow the handy tutorial to learn more.

CALLER ID

When you want to hear who's calling:

- **Read out loud:** have your caller announced—touch Apps > **Settings** > **Accessibility** > **Caller ID** **readout**.
- **Ringtones:** assign a unique ringtone to a contact—touch Apps > **People**, touch the contact, then touch Menu > **Set ringtone**.



Menu

More



Back

Next





CONTROL & CUSTOMISE



CONTROL & CUSTOMISE

QUICK START: CONTROL & CUSTOMISE

ON, OFF, LOCK & UNLOCK

TOUCH

PRESS

SPEAK

CUSTOMISE

QUICK SETTINGS

SMARTACTIONS™

ACCESSIBILITY

VOLUME & VIBRATE

Find it: Apps > **Settings** > **Sound** > **Volumes** or **Vibrate and ring**

- **Volumes** opens sliders that let you set different volumes for your music or videos, ringtone, text or email notifications and alarms.
- **Vibrate and ring** determines whether your phone vibrates for incoming calls (even if the ringer is silent).

ZOOM

Get a closer look.

- **Pinch to zoom:** pinch to zoom on maps, webpages and photos: to zoom in, touch the screen with two fingers and then drag them apart. To zoom out, drag your fingers together.

Tip: To zoom in, you can also double-tap.

- **Big text:** show bigger text throughout your phone: touch Apps > **Settings** > **Accessibility** > **Large text**.
- **Browser:** choose zoom, text size and other accessibility settings for your browser: touch Apps > **Browser** > Menu > **Settings** > **Accessibility**.

DISPLAY BRIGHTNESS

Your phone automatically adjusts the screen brightness when you're in bright or dark places. But you can set your own brightness level instead:

Find it: Apps > **Settings** > **Display** > **Brightness**

Deselect **Automatic brightness** to set your own level.

TOUCH SCREEN & KEYS

To hear or feel when you touch the screen, touch Apps > **Settings** > **Sound**:

- **Touchscreen:** to hear screen touches (clicks), select **Touch sounds**.
- **Keys:** to feel screen keyboard touches (vibrate), select **Vibrate on touch**.
- **Screen lock:** to hear when you lock or unlock the screen (click), select **Screen lock sound**.

MESSAGES

To make text entry even easier, use features such as auto-complete, auto-correct and auto-punctuate, touch Apps > **Settings** > **Language & input**, then touch next to a keyboard type. Of course if you don't want to type at all, then use your voice—touch on the touchscreen keyboard.

APPS

Want more? No problem. The Google Play™ Store app provides access to thousands of apps, and many provide useful accessibility features.

Find it: Apps > **Play Store**



Menu

More



Back

Next





CALLS

when you need to talk



CALLS

QUICK START: CALLS

MAKE, ANSWER & END CALLS

RECENT CALLS

PHONEBOOK

SPEED DIAL

VOICE DIAL

HANDS-FREE

MUTE & HOLD

ENTER NUMBERS DURING A CALL

VOICEMAIL

VIDEO CHAT

MULTIPLE CALLS & CONFERENCE CALLS

YOUR NUMBER & CALLER ID

CALL FORWARDING & WAITING

RESTRICT OUTGOING CALLS

COOL DOWN

EMERGENCY CALLS



Menu

More



Back

Next



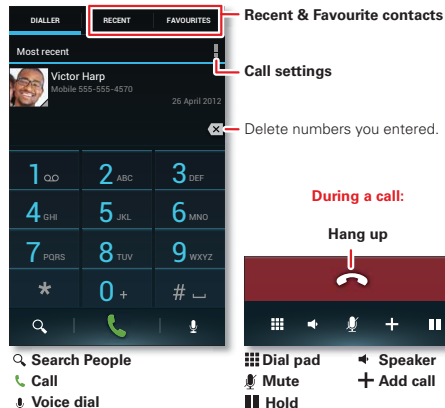
QUICK START: CALLS

Dial numbers, recent calls or contacts, all from one app.

Find it: Apps > **Phone**

Tip: In the phone unlock screen, drag to .

To make a call, enter a number then touch in the **DIALLER**, or flick to the **RECENT** and **FAVOURITES** tabs for quick access to your calls and contacts.



During a call:

Hang up



TIPS & TRICKS

- **During a call:** your touchscreen goes dark to avoid accidental touches. To wake it up, move it away from your face or press the Power key.
- **Multi-task:** touch Home to hide the call display and look up a phone number, address or open other apps during a call. To reopen the call display, flick down the status bar and touch **Current call**.
- **People:** to search your **People**, touch .
- **Voicemail:** shows in the status bar when you have new voicemail. To hear it, touch Apps > **Phone**, then touch and hold 1.
- **Forward:** to forward all calls or unanswered calls, touch Apps > **Phone** > Menu > **Settings** > **Call forwarding**.



CALLS



CALLS

QUICK START: CALLS

MAKE, ANSWER & END CALLS

RECENT CALLS

PHONEBOOK

SPEED DIAL

VOICE DIAL

HANDS-FREE

MUTE & HOLD

ENTER NUMBERS DURING A CALL

VOICEMAIL

VIDEO CHAT

MULTIPLE CALLS & CONFERENCE CALLS

YOUR NUMBER & CALLER ID

CALL FORWARDING & WAITING

RESTRICT OUTGOING CALLS

COOL DOWN

EMERGENCY CALLS



Menu

More



Back

Next



MAKE, ANSWER & END CALLS

When you make or answer a call, you have options:

- **Make a call:** touch Apps > **Phone**, enter a number, then touch .

To enter the international dialling code (+), touch and hold . To add a pause or wait after numbers, touch Menu .

Tip: you can video chat with your friends. To learn how, see "VIDEO CHAT".

- **Answer a call:** touch and flick to .

With call waiting on, touch and flick to to answer the new call, then touch **Hold current call + Answer** or **End current call + Answer**.

- **Ignore a call:** touch and flick to . You can also press the Power key to ignore the call or press a volume key to silence the ring.

- **End a call:** touch .

- **During a call:** touch icons at the bottom of the call display to mute or hold the call. To hide the call display, touch Home . To reopen it, flick down the status bar and touch **Current call**.

Note: when you hold your phone to your ear, the touchscreen goes dark to avoid accidental touches.

When you move your phone away from your ear, the display lights up again.

During a call, your touchscreen might stay dark if the sensor just above it is covered. Don't use covers or screen protectors (even clear ones) that cover this sensor.



RECENT CALLS

Show your calls (with newest first), to call, text or store them:

Find it: Apps > **Phone** > **RECENT**

- To call a number, touch on the right.
- To send a text message, store the number or other options, touch and hold an entry.
- To search the list, touch at the bottom.
- To clear the list, touch Menu > **Clear list**.

PHONEBOOK

To show the phone numbers from your **People** list, touch Apps > **Phone** > . Touch and hold a contact to open option icons at the bottom of your screen (touch and hold an icon to show what it does).

For more about **People**, see "CONTACTS".



CALLS



CALLS

QUICK START: CALLS

MAKE, ANSWER & END CALLS

RECENT CALLS

PHONEBOOK

SPEED DIAL

VOICE DIAL

HANDS-FREE

MUTE & HOLD

ENTER NUMBERS DURING A CALL

VOICEMAIL

VIDEO CHAT

MULTIPLE CALLS & CONFERENCE CALLS

YOUR NUMBER & CALLER ID

CALL FORWARDING & WAITING

RESTRICT OUTGOING CALLS

COOL DOWN

EMERGENCY CALLS



Menu

More



Back

Next



SPEED DIAL

Call your eight most important **People** by just touching and holding one key in **Phone**:

- To choose the numbers for your speed dial list, touch Apps > **Phone** > Menu > **Speed dial setup**. Your voicemail is set as 1, and you can choose 2 through 9.
- To call a number in the list, touch Apps > **Phone**, then touch and hold the list number (such as 1 for voicemail).

Tip: to call a number even faster, add a **Direct dial** widget to your Home screen.

VOICE DIAL

Dial by just saying a number or a name from your **People**:

Find it: Apps > **Phone** >

Say "Call", followed by the number or name.

HANDS-FREE

Switch to hands-free calling during a call:

- To use the speakerphone, touch .
- To use (or stop using) a connected Bluetooth™ device, touch in the call display.

Note: using a mobile device or accessory while driving may cause distraction and may be illegal. Always obey the laws and drive safely.

MUTE & HOLD

During a call:

- To mute the current call, touch .
- To put a call on hold, touch .

ENTER NUMBERS DURING A CALL

To enter numbers during a call, touch **Dial pad**, then touch the numbers.

VOICEMAIL

When you have a new voicemail, shows in your status bar. To access voicemail, touch Apps > **Phone** then touch and hold **1**.

If you need to change your voicemail number, in the **Phone** app touch Menu > **Settings** > **Voicemail settings**.

VIDEO CHAT

You can see friends as you talk, using a phone's front camera or a computer's webcam. To use Google Talk™, see "**CHAT**".

MULTIPLE CALLS & CONFERENCE CALLS

During a call, you can start other calls, switch between them or join them in a conference call:



CALLS

CALLS

QUICK START: CALLS

MAKE, ANSWER & END CALLS

RECENT CALLS

PHONEBOOK

SPEED DIAL

VOICE DIAL

HANDS-FREE

MUTE & HOLD

ENTER NUMBERS DURING A CALL

VOICEMAIL

VIDEO CHAT

MULTIPLE CALLS & CONFERENCE CALLS

YOUR NUMBER & CALLER ID

CALL FORWARDING & WAITING

RESTRICT OUTGOING CALLS

COOL DOWN

EMERGENCY CALLS



Menu

More



Back

Next



MOTOROLA

- To answer a second call, touch and flick to . To ignore it, touch and flick to .

The first call goes on hold if you answer the second call. To switch between calls, touch .

- To dial a second call, touch , enter a number in **DIALLER**, **RECENT** or **FAVOURITES**, then touch .

The first call goes on hold when you touch . To join the calls after the second call answers, touch .

YOUR NUMBER & CALLER ID

To see the phone number on a phone, touch Apps > **Settings** > **About phone** > **Status** > **My phone number**.

To hide your number from people you call, touch Apps > **Phone** > **Menu** > **Settings** > **Additional settings** > **Caller ID**.

CALL FORWARDING & WAITING

Call forwarding can forward calls all the time, or only when your phone is busy, unanswered or unreachable (not on the network). To set call forwarding, touch Apps > **Phone** > **Menu** > **Settings** > **Call forwarding**.

Call waiting lets you answer a second call when you're already on a call. To turn off **Call waiting** and send second calls straight to your voicemail, touch Apps > **Phone** > **Menu** > **Settings** > **Additional settings** > **Call waiting**.

RESTRICT OUTGOING CALLS

To restrict your phone so that it can only dial a few numbers, touch Apps > **Phone** > **Menu** > **Settings** > **Fixed dialling numbers**.

- To turn fixed dialling on, touch **Enable FDN**.
- To add or delete the allowed numbers, touch **FDN list**.

COOL DOWN

In very limited circumstances, such as where your phone has been exposed to extreme heat, you may see "Cool down" messages. To avoid possible damage to your battery and phone, you should follow these instructions until the phone is within its recommended temperature range. When your phone is in "Cool down" mode, only emergency calls can be made.

EMERGENCY CALLS

Note: Your service provider programs one or more emergency phone numbers that you can call under any circumstances, even when your phone is locked. Emergency numbers vary by country. Your pre-programmed emergency number(s) may not work in all locations and sometimes an emergency call cannot be placed due to network, environmental or interference issues.

- Touch Apps > **Phone** (if your phone is locked, touch **Emergency call** or touch **Menu** > **Emergency call**).



CALLS



CALLS

QUICK START: CALLS

MAKE, ANSWER & END CALLS

RECENT CALLS

PHONEBOOK

SPEED DIAL

VOICE DIAL

HANDS-FREE

MUTE & HOLD

ENTER NUMBERS DURING A CALL

VOICEMAIL

VIDEO CHAT

MULTIPLE CALLS & CONFERENCE CALLS

YOUR NUMBER & CALLER ID


CALL FORWARDING & WAITING

RESTRICT OUTGOING CALLS

COOL DOWN

EMERGENCY CALLS

2 Enter the emergency number.

3 Touch  to call the emergency number.

Note: Your phone can use location based services (GPS and AGPS) to help the emergency services find you. See "Location Services" in your legal and safety information.



Menu

More



Back

Next





CONTACTS

you can be a people person



CONTACTS

QUICK START: CONTACTS

CREATE CONTACTS

CALL, TEXT OR EMAIL CONTACTS

FAVOURITE CONTACTS

EDIT, DELETE OR HIDE CONTACTS

GET CONTACTS

LINK CONTACTS

SHARE CONTACTS

GROUPS

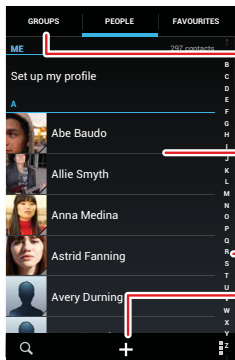
MY DETAILS

QUICK START: CONTACTS

Combine information from your Google™ contacts and social networks for quick access to everyone.

Find it: Apps > **People**

- **Create:** touch below the **People** list.
- **Edit or delete:** touch and hold a contact, then touch or .
- **Call, text or email:** touch a contact, then touch an option.



Create & view groups of contacts.

Touch to view contact information, call, send a text message & more.

Touch a letter to jump to contact names that start with that letter.

Search your **People**.

Add a contact.

Open settings, accounts or share.

TIPS & TRICKS

- **Groups:** to show or create a group of contacts, touch **GROUPS**, then touch the group or .
- **Search contacts:** from the Home screen, just touch **Google** and enter a contact's name. In the **People** list, touch **Q**.
- **Send contacts:** touch a contact, then touch **Menu** > **Share** to send a contact's details in a message or over a Bluetooth™ connection.
- **Shortcuts:** touch Apps , touch **WIDGETS** at the top, then touch and hold a **Contact** widget.
- **Synchronise:** on your computer, upload contacts to your Google™ account at www.google.com/contacts. On your phone, touch Apps > **Settings** > **Accounts & sync**, choose your Google™ account, then check **Sync contacts**. You can also see these contacts at www.gmail.com.

For help with transferring contacts, go to www.motorola.com/TransferContacts.



Menu

More



Back

Next





CONTACTS



CONTACTS

QUICK START: CONTACTS

CREATE CONTACTS

CALL, TEXT OR EMAIL CONTACTS

FAVOURITE CONTACTS

EDIT, DELETE OR HIDE CONTACTS

GET CONTACTS

LINK CONTACTS

SHARE CONTACTS

GROUPS

MY DETAILS

CREATE CONTACTS

Find it: Apps > **People** >

Touch a text box to type the name and details. When you're finished, touch **SAVE** at the top.

Note: To import contacts or change where they're stored, see "**GET CONTACTS**".

CALL, TEXT OR EMAIL CONTACTS

Find it: Apps > **People**

Touch and hold the contact to open option icons at the bottom of your screen (touch and hold an icon to show what it does).

You can also use "**VOICE DIAL**".

FAVOURITE CONTACTS

To see your favourite contacts, touch Apps

> **People** > **FAVOURITES**.

To tag a favourite, touch Apps > **People** > **PEOPLE**, touch a contact to open it, then touch next to their name.

EDIT, DELETE OR HIDE CONTACTS

Find it: Apps > **People**

- To edit a contact, touch it, then touch Menu > **Edit**. Then, touch a field to edit or touch to choose the contact's picture.

- To set a special ringtone for the contact, touch it, then touch Menu > **Set ringtone**.

- To delete the contact, touch it, then touch Menu > **Delete**.

Contacts from social networks (such as Facebook™) will become hidden if you select **Delete**. To view these contacts, or delete them permanently, use the social network's app or website.

- To hide the contacts from an account or group in your **People** list, touch Menu > **Contacts to display**. Touch a group name to show it, or touch **Customise** to deselect groups you always want to hide.

GET CONTACTS

- To add your social networking contacts, add your account in "**ADD OR DELETE ACCOUNTS**".
- To add your email contacts, see "**EMAIL**".

Tip: If you add a **Corporate sync** account, you can send messages to your co-workers, even if you don't have them stored in your contacts.

- To import contacts from your SIM card (if that didn't happen automatically): touch Apps > **People** > Menu > **Import/export** > **Import contacts from SIM card**. Touch **OK** to confirm.
- To import contacts from your computer, upload the contacts to your Google™ account at contacts.google.com.



Menu

More



Back

Next





CONTACTS



CONTACTS

QUICK START: CONTACTS

CREATE CONTACTS

CALL, TEXT OR EMAIL CONTACTS

FAVOURITE CONTACTS

EDIT, DELETE OR HIDE CONTACTS



GET CONTACTS






LINK CONTACTS

SHARE CONTACTS

GROUPS

MY DETAILS

On your phone, touch Apps  >  **Settings**
> **Accounts & sync**, choose your Google™ account,
then choose **Sync contacts**. You can also see these
contacts at www.gmail.com.


Where are contacts stored? Your phone can store
contacts in its memory or your Google™ account: to
choose where contacts are stored, touch Apps 
>  **People** > Menu  > **Settings** > **Contact storage** >
Contact storage account. If you don't see your Google
account listed, make sure you're syncing contacts with it:
touch Apps  >  **Settings** > **Accounts & sync**, touch the
account and check **Sync contacts**. Contacts are not stored
on your SIM card.

For help with transferring contacts, go to
www.motorola.com/TransferContacts.

LINK CONTACTS

You might have two **Contacts** for the same
person—maybe a Facebook™ friend, or one friend with
two email addresses. To combine these two contacts:


Find it: Apps  >  **People**

Touch a contact to open it, then touch Menu  > **Link
contact** and touch the second entry. Your phone
remembers this connection.

SHARE CONTACTS

Send a contact with a Bluetooth™ connection, text
message or email:


Find it: Apps  >  **People**

To send a contact, touch it, then touch Menu  > **Share**
and choose how you want to send it.

Note: you can't send your social network contacts.

GROUPS

Create groups of **Contacts** (such as "friends", "family" or
"work"), then find contacts faster by showing one group.

To create or show a group in your **Contacts**, touch **People**
> **GROUPS** at the top of your screen. Choose from groups
listed or touch  to create a new group.

MY DETAILS

Find it: Apps  >  **People** > **Set up my profile**

To edit details, touch **Set up my profile**.



Menu

More



Back

Next





MESSAGES

say it & go



MESSAGES

QUICK START: MESSAGES

READ, REPLY, FORWARD & DELETE TEXT MESSAGES

CREATE TEXT MESSAGES

EMAIL

CHAT

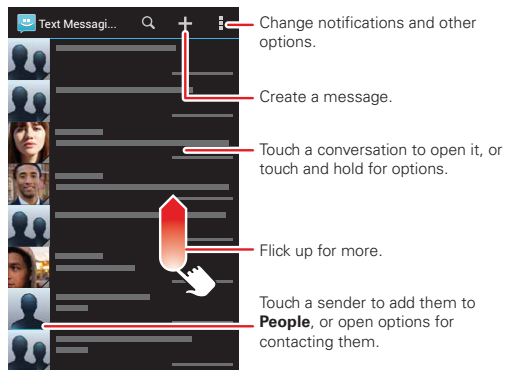
QUICK START: MESSAGES

Stay in touch with messages and pictures.

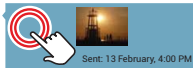
Find it: Apps > **Text**

Tip: When the phone is locked, drag to **Text**.

- **Create:** touch above the inbox list.
- **Attach:** when you're typing a message, touch to attach a picture, video or other file.



TIPS & TRICKS

- **Forward, or save attachments:** open a conversation, touch and hold a message, then touch to forward. Touch and hold a picture to save it. 
- **Voice entry:** just touch a text box, then touch on the touchscreen keyboard.
- **Reply to all in text messages:** when you send a text message to multiple people, you can let everyone see the other recipients and reply to all, or hide the other recipients so that replies only go to you. To change this, touch Apps > **Text** > Menu > **Settings** > **Set group message type**.
- **Text your best friend:** use a widget to text your favourite contact quickly: touch Apps , touch **WIDGETS** at the top, touch and hold **Direct message** to drag it to your Home screen, then choose a contact.



Menu



More



Back

Next





MESSAGES

MESSAGES

QUICK START: MESSAGES

READ, REPLY, FORWARD & DELETE TEXT MESSAGES

CREATE TEXT MESSAGES

EMAIL

CHAT



Menu

More



Back

Next



READ, REPLY, FORWARD & DELETE TEXT MESSAGES

Find it: Apps > Text

Tip: When the phone is locked, drag to Text.

- **Open:** touch a conversation to open it.
- **Attachments:** when you open a message with an attachment, touch the attachment to open it, or touch and hold it to save it.
- **Reply:** open a conversation, then enter your response in the text box at the bottom.
- **Forward:** open a conversation, touch and hold the message you want to forward, then touch at the top.
- **Delete:** touch and hold a conversation you want to delete (or open the conversation and touch and hold just one message), then touch at the top.
- **Settings:** touch Menu > **Settings** to change your ringtone and other options.

CREATE TEXT MESSAGES

Find it: Apps > Text >

- 1 Enter the recipients at the top.
- 2 Touch the text box at the bottom to enter the message. For text entry details, see "TYPE".

To add an attachment, touch . To send and receive large attachments faster, use "WI-FI NETWORKS".

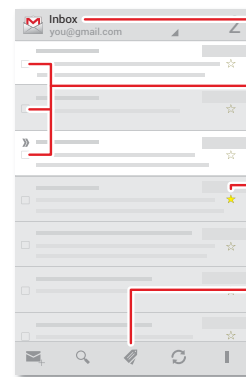


MOTOROLA

EMAIL

Check email accounts and send responses, photos, websites and more.

Find it: Apps > Gmail or Email



Choose accounts or folders.

Choose multiple messages, then choose an action at the bottom.

"Star" a message to add it to the **Starred** Gmail label.

- Create an email.
- Search Gmail.
- Show Gmail labels.
- Check Gmail.
- Open settings & options.

Touch & hold icons to show labels.

- **Add Gmail™ accounts:** the first time you turned on your phone, you probably set up or logged into your Google™ account—that sets up the **Gmail** app for one account, but you can add more in Apps > **Settings** > **Accounts & sync**.



MESSAGES



MESSAGES

QUICK START: MESSAGES

READ, REPLY, FORWARD & DELETE TEXT MESSAGES

CREATE TEXT MESSAGES

EMAIL

CHAT



Menu

More



Back

Next



- **Add email accounts:** to add accounts for **Email**, follow the prompts when you first open the app or touch > **ADD ACCOUNT**, then enter details. For Microsoft™ Exchange server work email accounts, enter details from your IT administrator.
- **Change or delete accounts:** to change an account's sync and notifications, or delete it, touch Apps > **Settings** > **Accounts & sync**, touch an account, then touch Menu > **Settings** or **Remove account**.

CHAT

Sign in and try a quick chat.

Find it: Apps > **Talk** and select your Google™ account. Your friends list opens, and icons tell you who is available for text chat, video chat, voice chat or who is offline.

- **Invite a friend:** touch in the top right-hand corner, then enter the email address for a friend's Google account. They'll receive the invitation when they sign into Google Talk™.
- **Start a text chat:** touch a name in your list of friends, then enter text and touch .
- **Start a voice or video chat:** touch the voice or video icon next to a friend's name.
- **Chat from a computer:** you can chat from a computer, too. Find out more at www.google.com/talk.

For other chat options, use:

- **Web browser:** in your Home screen, touch Google and enter your IM provider's website. Once you're there, follow the link to sign in.
- **Apps:** to search for an instant messaging app, touch Apps > **Play Store**. Your IM options will depend on your IM provider.



TYPE

keypad when you need it

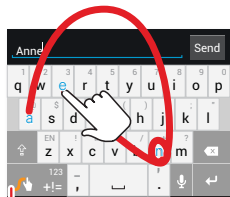
TYPE

QUICK START: TYPE TEXT ENTRY SETTINGS & DICTIONARY CUT, COPY & PASTE

QUICK START: TYPE

When you touch a text box, such as in a message or search, you have keyboard options.

- **Choose a keyboard:** in a text box, flick down the status bar and touch **Select input method**.
- **Close the keyboard:** touch Back .



Swype™ keyboard:

To enter a word, just trace a path through the letters. To capitalise, go above the keypad. For double letters, circle the letter.

To switch keyboards, touch & hold.



Motorola keyboard:

Touch a key for each letter, then touch predicted words to enter them.

TIPS & TRICKS

- **Move the cursor:** touch a spot in the text to place the cursor, then drag the arrow under the cursor to move it.
 - **Copy & paste:** double-tap a word to highlight it (if needed, drag the ends of the highlight). Touch icons at the top to select all, cut, copy or paste (touch and hold the icons to show labels).
 - **Your dictionary:** to add a word you enter often, enter it, touch the word in the word list below the text box, then touch there again to add it to your dictionary.
- If Swype doesn't know a word, touch individual letters to enter it.

- **Symbols:** touch and hold a key to enter the small number or symbol at the top of it.
- To enter several numbers or symbols, touch .



Menu

More



Back

Next





TYPE

QUICK START: TYPE

TEXT ENTRY SETTINGS & DICTIONARY

CUT, COPY & PASTE

TEXT ENTRY SETTINGS & DICTIONARY

Choose your keyboard style and edit the dictionary of words your phone suggests:

Find it: Apps > **Settings** > **Language & input**

- To choose your display keyboard, touch **Default**.

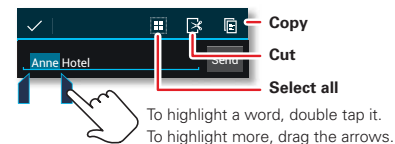
Motorola input lets you enter text one letter at a time. As you type, your phone suggests words. If you enter a word that wasn't one of the suggestions, touch the completed word in the suggestion bar twice to add it to your dictionary for next time.

Swype™ lets you enter words with one continuous motion. Just drag your finger over the letters in the word. If Swype doesn't know a word, you can touch letters to enter it—then, touch the word in the suggestion bar and touch **Add to dictionary** for next time.

- To change the preferences for your keyboards, touch next to a keyboard type. You can change the language, automatic punctuation and more.
- To add or edit the words that your phone suggests and recognises, touch **Personal dictionary**.

CUT, COPY & PASTE

Cut, copy and paste names, phone numbers, addresses, quotes or anything else in a text box.



- 1 To highlight a word, double-tap it.

To highlight more words, drag the selector arrow at the edge of the highlight.

- 2 Touch the icons for cut or copy.

Tip: touch and hold icons to show labels.

- 3 Open the text box where you want to paste the text (even if it's in a different app).

- 4 Touch in the text box, then touch and hold to show the **PASTE** option. Touch **PASTE** to paste the text.



Menu

More



Back

Next





SOCIALISE

your life & your friends



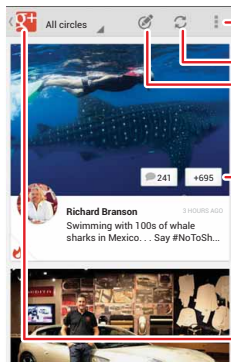
SOCIALISE

QUICK START: SOCIALISE ADD OR DELETE ACCOUNTS

QUICK START: SOCIALISE

Google+™ makes connecting on the web more like connecting in the real world. Share your thoughts, links and photos with the right circles.

Find it: Apps > **Google+**



Open options, such as **Search posts & Sign out**.

Refresh.

Share a thought, photos & your location.

Add your thought or comment.

Navigation menu (**Home, Profile, Circles & more**).

TIPS & TRICKS

- **Create a circle:** touch > **Circles** > , enter circle name and touch **OK**. To add people, touch **Suggested**

people. Select a person (touch **ADD**), then touch a circle and **OK**.

- **Show or delete circles:** touch > **Circles** and touch a circle name. Flick up and down to see the circle's **People**, **Posts** and **Photos**. To delete the circle, touch **Menu** > **Delete circle**.
- **Add a widget:** in your Home screen, touch Apps , touch **Widgets** at the top, then touch and hold **Google+ posts** to drag them to your Home screen.
- **Help:** for more about Google+, visit www.google.com/+.
- **Other social networks:** you can also use Facebook™, Twitter and more. Use the Google Play™ Store app to find the latest official apps and widgets.



Menu

More



Back

Next





SOCIALISE

QUICK START: SOCIALISE


ADD OR DELETE ACCOUNTS

ADD OR DELETE ACCOUNTS

The first time you turned on your phone, you probably set up or logged into your Google™ account—that sets up the **Google+** app for social networking.


Note: Use Google Play™ to download the Facebook app.




To add your account for the  **Facebook** app:

- 1 touch Apps  >  **Settings** > **Accounts & sync** > **ADD ACCOUNT** > **Facebook**.

Tip: Your network or other factors might affect the download speeds. To download faster, see "**WI-FI NETWORKS**".

- 2 Sign into your account with the username or email and password that you set up at www.facebook.com. Your Facebook™ friends will appear in your **People** list.

If you don't see your Facebook friends in **People**, choose your account in the **Accounts & sync** list and make sure **Contacts** is ticked. In your **People** list, touch Menu  > **Contacts to display** > **Customise** and make sure your Facebook account has **All contacts** ticked.

To delete an account (along with its contacts and messages on your phone), touch Apps  >  **Settings** > **Accounts & sync**, touch the account, then touch Menu  > **Remove account**.



Menu

More



Back

Next





BROWSE

explore & find

BROWSE

QUICK START: BROWSE

WEB CONNECTION

BOOKMARKS

DOWNLOADS

BROWSER OPTIONS

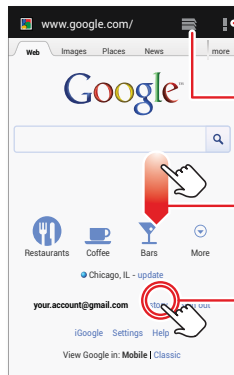
SAFE SURFING & SEARCHING

QUICK START: BROWSE

Access to the world. Find a webpage or just explore:

Find it: Apps ⋮ > **Browser**

- **Go to a webpage:** touch the address bar at the top of a page and enter an address.
- **Create or open bookmarks:** open the address bar (flick down), then touch Menu ⋮ > **Save to bookmarks** or **Bookmarks**.



Open options for the browser & page.

Show other browser tabs, or open a new one.

If you don't see the URL bar at the top, drag the page down.

Touch a link to select it. Touch & hold for more options.



TIPS & TRICKS

- **Go to a webpage:** in your Home screen, just touch **Google** at the top and enter a webpage address.
Note: If you can't connect, contact your service provider.
- **Mobile sites:** some websites automatically show you a "mobile" version of their page. If you want to see the standard computer versions of all websites, touch Menu ⋮ > **Request desktop site**.
- **Reload:** if a page doesn't load correctly, try touch Menu ⋮ > **Refresh**.
- **Clear history:** in the browser, touch Menu ⋮ > **Settings**, then choose history, cache, cookies and other options.



Menu

More



Back

Next





BROWSE



BROWSE

QUICK START: BROWSE

WEB CONNECTION

BOOKMARKS

DOWNLOADS

BROWSER OPTIONS

SAFE SURFING & SEARCHING



Menu

More



Back

Next



WEB CONNECTION

To access the web, your phone uses your Wi-Fi network (or your mobile phone network if no Wi-Fi network is connected).

Note: your service provider may charge to surf the web or download data over your mobile phone network.

To connect to a Wi-Fi network, see "**WI-FI NETWORKS**".

BOOKMARKS

To bookmark a page in your browser, touch Menu > **Save to bookmarks**.

To go to a bookmark, touch Menu > **Bookmarks**, then touch the bookmark.

Tip: in your browser, touch to show the tabs you have open, then touch at the top to open bookmarks.

DOWNLOADS

Warning: apps downloaded from the web can be from unknown sources. To protect your phone and personal data, only download apps from sources you trust, such as "**GOOGLE PLAY™**".

To download a file, picture or webpage, touch Apps > **Browser** and go to the website:

- **Files:** touch the download link. To show the file or app, touch Apps > **Downloads**.

- **Pictures:** touch and hold it to choose **Save image**. To show the picture, touch Apps > **Gallery** > **Download**.
- **Webpages:** touch Menu > **Save for offline reading**. To reopen the page, touch Apps > **Browser** > Menu > **Saved pages**.

To download apps or phone updates, see "**DOWNLOAD APPS**" or "**UPDATE YOUR PHONE**".

BROWSER OPTIONS

To change your browser Homepage, security settings, text size and other options, touch Menu > **Settings**.

SAFE SURFING & SEARCHING

Keep track of what your browser and searches show:

- **Browse incognito:** to open a tab that won't appear in your browser or search history, touch Apps > **Browser** > Menu > **New incognito tab**.
- **Browser history, cache and passwords:** to clear your browser history and other saved information, touch Apps > **Browser** > Menu > **Settings** > **Privacy & security**.
- **Automatic form completion:** when you enter your name in an online form, your browser can automatically enter your address information. If you don't want that, touch Apps > **Browser** > Menu > **Settings** > **General**, then deselect **Form auto-fill**.



BROWSE



BROWSE

QUICK START: BROWSE





WEB CONNECTION

BOOKMARKS

DOWNLOADS

BROWSER OPTIONS

SAFE SURFING & SEARCHING

- **Browser pop-ups:** to stop pop-up windows from opening, touch Apps  >  **Browser** > Menu  > **Settings** > **Advanced** > **Block pop-ups**.
- **Search history and location:** in your Home screen, touch Google to open the search window, then touch Menu  > **Settings** > **Google Search**, then deselect the options you don't want.



Menu

More



Back

Next





PHOTOS & VIDEOS

see it, capture it, share it.



PHOTOS & VIDEOS

QUICK START: PHOTOS & VIDEOS

INSTANT ON

TAKE PHOTOS

RECORD VIDEOS

THE PERFECT SHOT

EDIT, SHARE OR DELETE PHOTOS & VIDEOS

CAPTURE YOUR SCREEN

FILMS

YOUTUBE™

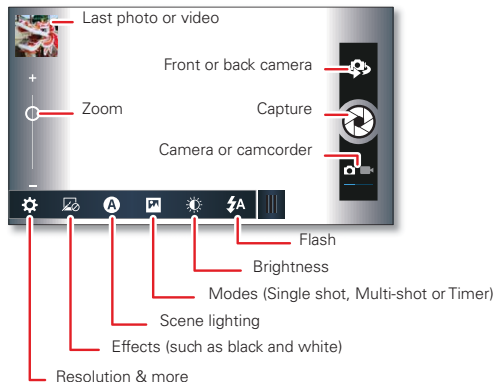
QUICK START: PHOTOS & VIDEOS

Capture super clear photos and HD videos to savour that "Wow!" moment. Send them to friends or save them for later.

Find it: Press the Camera key or touch Apps (⋮)

> **Camera**

Tip: When the phone is locked, press the Camera key.



TIPS & TRICKS

- **Instant on:** press the Camera key, even when your screen is off.
- **Take a photo:** press the Camera key to open your camera, and press it again to take a photo.
- **Record a video:** touch in the camera, then touch to start or stop recording.
- **Burst mode:** take photos in rapid succession, open the camera, touch **Modes** and select **Multi-shot**, then touch .
- **HDR mode:** In certain lighting conditions your phone will automatically suggest that you turn on HDR to improve the quality of the image. HDR (High dynamic range) imaging is a set of methods used in imaging and photography to allow a greater dynamic range between the lightest and darkest areas of an image. When using HDR, your phone will take three images and merge the exposures in each to create one single optimum image. Touch the pop-up to go to HDR mode or touch the viewfinder to cancel. Do not move your phone before the photo is saved. Touch Apps (⋮) > **Guide Me** for more details.
- **View, share or delete:** touch your last photo/video in the corner of your viewfinder or touch Apps (⋮) > **Gallery** and touch a photo or video. You can choose play on media device (DLNA), share, delete, Menu and more.
- **Zoom:** press the volume keys.



Menu

More



Back

Next





PHOTOS & VIDEOS



PHOTOS & VIDEOS

QUICK START: PHOTOS & VIDEOS

INSTANT ON

TAKE PHOTOS

RECORD VIDEOS

THE PERFECT SHOT

EDIT, SHARE OR DELETE PHOTOS & VIDEOS

CAPTURE YOUR SCREEN

FILMS

YOUTUBE™



Menu

More



Back

Next



- **Focus and flash:** to choose an off-centre focus point and test the automatic flash, touch a spot in the viewfinder before you take the picture. A green square marks the focus point—touch to take the picture.
- **Memory card:** photos and videos are stored in your phone memory unless you open the viewfinder and touch > **Storage** > **SD card**.
- **Clarify:** for the clearest photos and videos, clean the lens with a soft, dry cloth.

INSTANT ON

Press the Camera key, even when your screen is off or your phone is locked. Press the Camera key or touch to take a photo.

To turn **Instant on** off, drag right to open the menu bar, touch **Camera settings**, then un-tick the **Instant on** box.

Your Camera key can still be used to take photos, just touch Apps > **Camera**.

Note: The feature to disable **Instant on** is only available in the settings menu, after you have used the **Instant on** feature once by pressing the Camera key.

TAKE PHOTOS

Find it: Press the Camera key

Press the Camera key or touch to take a photo. Take photos in rapid succession, touch **Modes** and select **Multi-shot**, then press the Camera key or touch .

RECORD VIDEOS

Find it: Press the Camera key, then touch .

Press the Camera key or touch to start or stop recording.

Tip: To send a video in a text message, set the video quality first: touch to switch to the camcorder, then, touch > **Video resolution** > **QVGA**. After you record the video, touch its thumbnail, then touch it for sharing options.

THE PERFECT SHOT

Point and click—done. But when you want the perfect shot or something a little different, play with these camera options:

Options

Settings

- **Widescreen** (6MP or 8MP photo resolution)
- **Volume key function** (use volume keys to zoom)
- **Instant on** (deselect to turn off)
- **Geo-tag** (auto-location information)
- **Storage location** (phone or microSD memory card).



PHOTOS & VIDEOS



PHOTOS & VIDEOS

QUICK START: PHOTOS & VIDEOS

INSTANT ON

TAKE PHOTOS

RECORD VIDEOS

THE PERFECT SHOT

EDIT, SHARE OR DELETE PHOTOS & VIDEOS

CAPTURE YOUR SCREEN

FILMS

YOUTUBE™



Menu

More



Back

Next



Options

Effects	Set a photo effect: Normal, Black & White, Negative and Sepia .
Scenes	Set the type of photo you want to take: Auto, Portrait, Landscape and Night portrait .
Modes	Set to Single shot, Multi-shot, Timer or HDR .
Exposure	Select an exposure setting.
Flash	Set Flash on, Flash off or Auto-flash .

Or these video options:

Options

Settings	<ul style="list-style-type: none"> Video resolution (1080p, 720p, DVD, VGA or QVGA) Volume key function (use volume keys to zoom) Geo-tag (auto-location information) Storage location (phone or microSD memory card).
Effects	Set a photo effect: Normal, Black & white, Negative and Sepia .

Options

Modes	Set to Normal video, Video message or Time lapse .
Exposure	Select an exposure setting.
Light	Set Light on or Light off .

EDIT, SHARE OR DELETE PHOTOS & VIDEOS

Find it: Apps > Gallery

- View, share or delete:** touch a thumbnail to open it, then choose play on media device (DLNA), share, delete, Menu and more.

Tip: To select multiple files, open a folder, touch and hold a photo, then touch others.

- Zoom:** open a photo, then drag two fingers apart or together on the screen.

Tip: Turn the phone sideways for a widescreen view.

- Wallpaper or contact photo:** open a picture, then touch Menu > **Set picture as**.
- Edit:** open a picture, then touch Menu > **Edit**.





PHOTOS & VIDEOS



PHOTOS & VIDEOS

QUICK START: PHOTOS & VIDEOS

INSTANT ON

TAKE PHOTOS

RECORD VIDEOS

THE PERFECT SHOT

EDIT, SHARE OR DELETE PHOTOS & VIDEOS

CAPTURE YOUR SCREEN

FILMS

YOUTUBE™



Menu



More



Back

Next



- **Slideshow:** open a folder, then touch  at the top. To stop the slideshow, touch the display or Back .



Tip: To show the slideshow on a television or other device, see "**CONNECT & TRANSFER**".

To copy photos to/from a computer, go to "**MEMORY CARD & FILE MANAGEMENT**".

CAPTURE YOUR SCREEN

Sometimes a picture speaks louder than words. Share a screen capture of your favourite playlist, your new high score or a friend's contact information. If you can show it on your phone, you can share it with your friends.

To capture your phone's screen, press and hold the Power and Volume down keys at the same time.

To see the screen capture, touch Apps  >  **Gallery** > **Screenshots**.

FILMS

Find and rent films to watch on your phone or computer:

Find it: Apps  >  **Play Films**



To shop, rent or watch on a computer, go to www.google.com/play and choose "Movies".

To pay for rentals, set up your Google Wallet™ at www.google.com/wallet.

YOUTUBE™

Watch videos from YouTube users everywhere—or log into your account to share your own.

Find it: Apps  >  **YouTube**

- **Watch:** touch **BROWSE** or  search to find a video, then touch the image to play it.
- **Upload:** touch **ACCOUNT**, choose your Google™ account, then touch .



MUSIC

when life needs a soundtrack



MUSIC

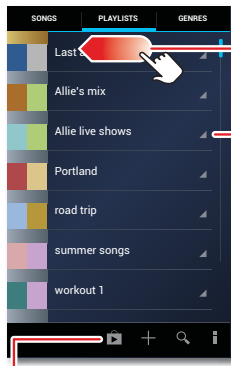
QUICK START: MUSIC

QUICK START: MUSIC

Music everywhere, literally—stream it, buy it, save it, play it. Listen and create playlists any time.

Find it: Apps > Play Music

To access your Google Play™ Music app with a computer, visit www.play.google.com/music/listen.



Flick left or right for songs, playlists & more.

Touch for options.

During a song:

Open details & settings.



Touch to skip or hold to scan.

TIPS & TRICKS

- **Go back:** when you open a song or artist list, touch in the top left of the screen to go back.
- **Shuffle or repeat:** during a song, touch to show shuffle and repeat at the bottom. Touch once to repeat the current song list or twice to repeat only the current song.
- **Volume:** press the volume keys.
- **Hide the music player:** to use another app while your music plays, touch Home . To return to the music player, flick down the status bar and touch the song title.
- **Home screen:** control music playback from the Home screen by adding the **Google Play Music** widget.
- **Shop:** touch to shop for more music.
- **Playlists:** touch and hold a song in your library to add it to a playlist or show other options. To edit, delete and rename a playlist, touch and hold its name in the music library.
- **During a flight:** press and hold the Power key > **Flight mode** to turn off all your network and wireless connections and listen to music during a flight.
- **File types:** your phone can play AAC, AAC+, AMR NB, eAAC+, H.263, H.264, MIDI, MP3, MPEG-4, WAV, WMA10, WMA9 and WMA v9 files.



Menu

More



Back

Next





BOOKS

even thick books fit



BOOKS

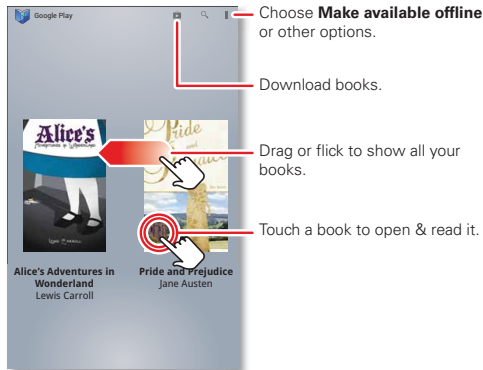
QUICK START: BOOKS

QUICK START: BOOKS

Read your favourite books, magazines and newspapers when and where you want.

Find it: Apps > **Play Books**

- **Open:** flick left and right to see more books in your library. To open a book, touch it.
- **Read offline:** to store books for reading when you're not connected, touch Menu > **Make available offline**, choose the books, then touch .



TIPS & TRICKS

- **Turn pages:** while reading the book, turn the pages by flicking them.
- **Recent page:** when you open a book, it shows the last page you were reading.
- **Table of contents:** touch a book page, then touch Menu to open its table of contents or your book display options.
- **Close:** to return to your book list, touch in the top left of the screen.
- **Shop:** to shop for books, touch Apps > **Play Books**, then in the top right of the screen.

Browse by category, or touch and search for a title or author. Touch a book to show details. Then, touch the book's price to buy it (or touch **OPEN** to open a free book). After you confirm a purchase, the book is added to your library.



Menu

More



Back

Next





LOCATE & NAVIGATE

where you are, where you're going



LOCATE & NAVIGATE

QUICK START: LOCATE & NAVIGATE

GOOGLE LOCAL™

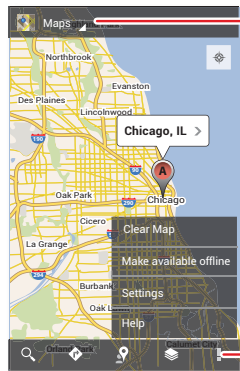
GOOGLE MAPS™ WITH NAVIGATION (BETA)

GOOGLE LATITUDE™

QUICK START: LOCATE & NAVIGATE

Find an address, find a place, see what's close by, get directions or full navigation and so much more—all with the Google Maps™ you know and love.




Find it: Apps > Maps



Open **Navigation**, **Latitude**,
history and more.

Search
Directions
Local
Layers
Menu

TIPS & TRICKS

- **Find an address:** enter the address in the search box at the top. The map moves to show the address.
- **Get directions:** find an address on the map, touch it, then touch .
- **Save an address:** touch the address, then touch the star by its name. To show your starred places, touch **Maps** and choose **My Places**. Touch a star to remove it.
- **Zoom:** to zoom in or out, drag two fingers together or apart on the screen.
- **Turn and tilt:** rotate two fingers on the map to turn it or drag down/up to tilt.
- **Send your location:** to tell others where you are, touch your location on the map, touch the **My Location** bubble, then choose **Send location to others**.
- **Find nearby businesses or attractions:** touch  at the bottom.
- **Identify address:** touch and hold a spot on the map to show the nearest address.
- **Get map help:** touch Menu  > **Help**.



Menu

More



Back

Next





LOCATE & NAVIGATE



LOCATE & NAVIGATE

QUICK START: LOCATE & NAVIGATE

GOOGLE LOCAL™

GOOGLE MAPS™ WITH NAVIGATION (BETA)

GOOGLE LATITUDE™

GOOGLE LOCAL™

Google Local lets you find the restaurants, cafes, bars and attractions that are close to you:

Find it: Apps > **Local**

Tip: In **Maps**, just touch at the bottom.

GOOGLE MAPS™ WITH NAVIGATION (BETA)

Get spoken turn-by-turn directions to the destination you specify.

Find it: Apps > **Navigation**

Speak, type or select your destination. **Navigation** shows a map and starts telling you directions.

Tip: To add to your **STARRED** places, open Google Maps™, find an address, then touch the ☆ next to it.

To **Exit navigation** or see other options, touch at the bottom. Touch to show petrol stations and other points along the way.

Note: Using a mobile device or accessory while driving may cause distraction and may be illegal. Always obey the laws and drive safely.

For more, go to www.google.com/mobile/navigation.

GOOGLE LATITUDE™

Google Latitude lets you see where your friends and family are on Google Maps™. Plan to meet up, check that they got home safely or just stay in touch. Don't worry, your location is not shared unless you agree to it. After you join Google Latitude, you can invite your friends to view your location or accept their invitations.

To join Google Latitude, touch Apps > **Maps**, touch **Maps** at the top, then choose **Join Latitude**.

To use Google Latitude after you join, touch Apps > **Latitude**:

- To **add** friends, touch .

Touch **Select from contacts** or **Add via email address**. Your friend will receive an email notice.

- To **remove** friends, touch next to their name.
- To **share** your location when you receive a request, you can choose **Accept and share back** (show your location and see theirs), **Accept, but hide my location** (hide your location, but see theirs) or **Don't accept** (hide both locations).
- To **hide** your location, touch Menu > **Location settings** > **Location reporting** > **Do not update your location**.
- To **sign out**, touch Menu > **Location settings** > **Sign out of Latitude**.



Menu

More



Back

Next





WORK

get it done any time



WORK

QUICK START: WORK

CORPORATE SYNC

QUICKOFFICE

OFFICE NETWORK

ALARM

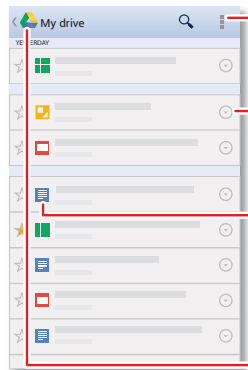
CALENDAR

QUICK START: WORK

Google Drive™ lets you create documents on the web to share with any computer, phone or smart phone.

Find it: Apps ⋮ > Drive > My Drive

If you don't have Drive, you can download it for free: touch Apps ⋮ > Play Store and search on Google Drive.



Sort the list, or create a new document.

Share, send, rename, download offline and more.

Document
 Drawing
 Presentation
 Spreadsheet
 Other file type

Return to the main Drive screen.

TIPS & TRICKS

- **Create:** to create a new document, touch Menu ⋮ > **New**.
- **Share:** touch next to a document in your list to share it, make it available offline and more.
- **Import:** on your computer, access your documents at www.drive.google.com. There, you can create or upload documents from your computer.
- **Help:** for help or more information on Google Drive, visit www.google.com/support/drive.
- **Accelerate:** use a dock or Bluetooth™ keyboard and mouse when you want to make your phone more like a laptop computer. To connect them, turn them on and touch Apps ⋮ > Settings > Bluetooth. To disconnect them, turn them off. For more, see "**BLUETOOTH™ WIRELESS**".



Menu

More



Back

Next





WORK

QUICK START: WORK

CORPORATE SYNC

QUICKOFFICE

OFFICE NETWORK

ALARM

CALENDAR

CORPORATE SYNC

If you use Microsoft™ Office Outlook on your work computer, your phone can synchronise emails, events and contacts with your Microsoft Exchange server.

- To add your **Corporate** account, see "**EMAIL**".
- To choose what to sync from your **Corporate** account, touch Apps > **Settings** > **Accounts & sync**, touch your account, then choose options such as **Calendar**, **Contacts** or **Email**.

QUICKOFFICE

Use **Quickoffice** to view and edit files.

Find it: Apps > **Quickoffice**

Touch a file or folder to open, or touch and hold a file for options. You can edit most text or spreadsheet files:

- Place your cursor by touching the text.
- Select text by double-tapping it.
- Open a keyboard, choose formatting, save the file, or choose other options by touching Menu .

OFFICE NETWORK

To connect your office network with a Virtual Private Network connection, see "**VIRTUAL PRIVATE NETWORKS (VPN)**".

ALARM

Find it: Apps > **Clock**

- **Alarm:** touch the tickbox next to an alarm to set it. Touch an alarm to edit it or touch to add a new alarm.

When an alarm sounds, touch **Dismiss** to turn it off or **Snooze** to delay for ten minutes.

- **Settings:** to change your alarm sound, snooze delay or other settings, touch Menu .

Tip: To set your date, time, time zone and formats, touch Apps > **Settings** > **Date & time**.



Menu

More



Back

Next





WORK

QUICK START: WORK
CORPORATE SYNC
QUICKOFFICE
OFFICE NETWORK
ALARM
CALENDAR

CALENDAR

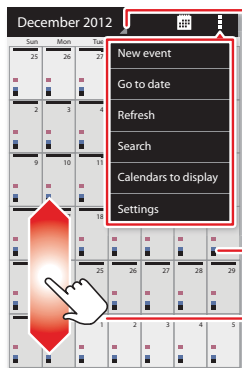
Show events stored on your phone and in your online calendars, all together in one place.

Find it: Apps > Calendar

- **Change the view:** touch the date at the top left to choose **Day, Week, Month** or **Diary**.

To set your default view, touch Menu > **Settings**
> **General settings** > **Default view**.

To go to a date, touch Menu > **Go to date**.



View options

Event colours indicate different calendars.

Click to see previous/next month.

- **Add events:** from any view, touch Menu > **New event**, enter event details, then touch **SAVE**.
 - **Show, edit or delete events:** touch an event to open it, then touch edit or delete .
 - **Show, hide or add calendars:** touch Menu > **Calendars to display** to show or hide calendars from your Google™ account. You can use a computer to add or remove calendars on your Google account at www.google.com/calendar.
- Where are events stored and changed?** Your phone can store your events in your Google account or on your phone: touch Menu > **Settings** > **General settings** > **Default calendar**.

Tip: Add a **Calendar** widget to your Home screen. Touch Apps > **WIDGETS**, then touch and hold the **Calendar** widget to add it to your Home screen.



Menu

More



Back

Next





CONNECT & TRANSFER

wired up or wireless



CONNECT & TRANSFER

QUICK START: CONNECT & TRANSFER

BLUETOOTH™ WIRELESS

WI-FI NETWORKS

USB CABLES

MEMORY CARD & FILE MANAGEMENT

SHARE YOUR DATA CONNECTION

DATA USE

NFC

YOUR CLOUD

PHONE & TABLET

DLNA™ MEDIA DEVICES

VIRTUAL PRIVATE NETWORKS (VPN)

MOBILE NETWORK

FLIGHT MODE



Menu

More



Back

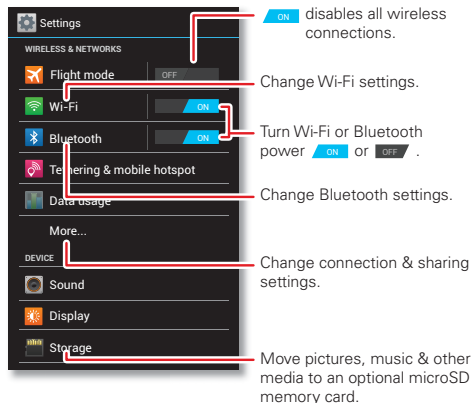
Next



QUICK START: CONNECT & TRANSFER

Connect accessories, computers, networks and more.

Find it: Apps > Settings



TIPS & TRICKS

- **Bluetooth™ devices:** to connect a Bluetooth headset, keypad or other device, touch **Bluetooth**.
- **Wi-Fi networks:** to connect, touch **Wi-Fi**.
- **Wi-Fi hotspot:** to make your phone a hotspot, touch **Tethering & mobile hotspot**, then tick **Mobile hotspot**. You can change hotspot security.
- **Google Drive™:** upload files to the web, so that you can access them from the browser in Microsoft™ Windows™ or Apple™ Macintosh™ computers, as well as other Android™ devices. See "**QUICK START: WORK**" and visit <http://drive.google.com>.
- **USB cable:** your phone's micro USB port lets you exchange media and other files with a connected computer. To change the type of USB connection, touch Apps > Settings > Storage > Menu > **USB computer connection**.
- **Automatic connections:** when Bluetooth™ or Wi-Fi power is , your phone automatically reconnects to available devices or networks it has used before.



CONNECT & TRANSFER



CONNECT & TRANSFER

QUICK START: CONNECT & TRANSFER

BLUETOOTH™ WIRELESS

WI-FI NETWORKS

USB CABLES

MEMORY CARD & FILE MANAGEMENT

SHARE YOUR DATA CONNECTION

DATA USE

NFC

YOUR CLOUD

PHONE & TABLET

DLNA™ MEDIA DEVICES

VIRTUAL PRIVATE NETWORKS (VPN)

MOBILE NETWORK

FLIGHT MODE



Menu

More



Back

Next



BLUETOOTH™ WIRELESS

TURN BLUETOOTH POWER ON/OFF

Find it: Apps > **Settings**, then touch the **Bluetooth** switch to turn it ON.

Tip: To extend battery life or stop connections, turn the Bluetooth switch OFF when you're not using it.

CONNECT DEVICES

The **first time** you connect a device, follow these steps:

- 1 make sure the device you are pairing with is in discoverable mode (for details, refer to the guide that came with the device).
- 2 Touch Apps > **Settings** > **Bluetooth**.
- 3 Make sure the switch at the top is ON, then touch **SEARCH FOR DEVICES**.
- 4 Touch a found device to connect it (if necessary, touch **Pair** or enter a passkey such as **0000**).

Tip: Touch next to a device to rename it.

When the device connects, the Bluetooth status indicator turns blue .

To automatically **disconnect** or **reconnect** a device any time, just turn it off or on.

Note: Using a mobile device or accessory while driving may cause distraction and may be illegal. Always obey the laws and drive safely.

MANAGE DEVICES

To manually reconnect your phone with a paired device, touch the device name in the **AVAILABLE DEVICES** list.

To manually disconnect your phone from a paired device, touch the device name in the devices list, then touch **OK**.

To remove a paired device, touch next to the device name in the **PAIRED DEVICES** list, then touch **Unpair**.

Touch Apps > **Settings** > **Bluetooth**, turn Bluetooth power on, then touch Menu > **Rename phone**. Enter a name and touch **OK**.

LET DEVICES FIND YOUR PHONE

To let a Bluetooth device discover your phone:

- 1 Touch Apps > **Settings** > **Bluetooth**.
- 2 Touch **Only visible to paired devices** to make your phone visible to all devices for two minutes.

TRANSFER FILES

- **Photos or videos:** open the photo or video, then touch > **Bluetooth**.
- **People:** touch Apps > **People** > Menu > **Share contacts**, tick what you want to share (you can choose **Unselect all**), then touch **OK** > **Bluetooth**.



CONNECT & TRANSFER



CONNECT & TRANSFER

QUICK START: CONNECT & TRANSFER

BLUETOOTH™ WIRELESS

WI-FI NETWORKS

USB CABLES

MEMORY CARD & FILE MANAGEMENT

SHARE YOUR DATA CONNECTION

DATA USE

NFC

YOUR CLOUD

PHONE & TABLET

DLNA™ MEDIA DEVICES

VIRTUAL PRIVATE NETWORKS (VPN)

MOBILE NETWORK

FLIGHT MODE



Menu

More



Back

Next



WI-FI NETWORKS

TURN WI-FI POWER ON/OFF

Find it: Apps > **Settings**, then touch the **Wi-Fi** switch to turn it **ON**.

Note: To extend battery life, turn the Wi-Fi switch **OFF** when you're not using it.

CONNECT TO NETWORKS

To find networks in your range:

- 1 Touch Apps > **Settings** > **Wi-Fi**.

Tip: To see your phone's MAC address and Wi-Fi settings, touch Menu > **Advanced**.

- 2 Make sure the switch at the top is **ON**, then touch **SCAN**.

- 3 Touch a found network to connect it (if necessary, enter **Network SSID**, **Security** and **Wireless password**, and touch **Connect**).

When your phone connects, the Wi-Fi status indicator appears in the status bar.

Note: If you see a question mark in the Wi-Fi status indicator , pull down the status bar, touch the network and enter the network's password.

Tip: When Wi-Fi power is on, your phone automatically reconnects to available networks it has used before.

MANAGE NETWORKS

To remove a network, touch it in the list, then touch **Forget**.

To manage your networks, touch Apps > **Settings** > **Wi-Fi**, turn Wi-Fi power on, then touch Menu > **Manage Networks**.

WI-FI HOTSPOT

You can make your phone a Wi-Fi hotspot to provide portable, convenient Internet access to other Wi-Fi enabled devices.

Note: Keep it secure. To protect your phone and hotspot from unauthorised access, it is strongly recommended that you set up hotspot **Security** (WPA2 is the most secure), including password.

Find it: Apps > **Settings** > **Tethering & mobile hotspot** and tick **Mobile hotspot**.

- 1 Your phone turns off **Wi-Fi** power and uses the mobile network for Internet access. Touch **Mobile hotspot settings** > **Configure mobile hotspot** to set up security:

- **SSID**—Enter a unique name for your hotspot.
- **Security**—Select the type of security you want: **Open** or **WPA2**. For **WPA2**, enter a unique password that others will need to access your Wi-Fi hotspot.

Note: **WPA2** is recommended by IEEE.

- **Channel**—If you notice interference after your hotspot has been active for a while, try different channels.



CONNECT & TRANSFER



CONNECT & TRANSFER

QUICK START: CONNECT & TRANSFER

BLUETOOTH™ WIRELESS

WI-FI NETWORKS

USB CABLES

MEMORY CARD & FILE MANAGEMENT

SHARE YOUR DATA CONNECTION

DATA USE

NFC

YOUR CLOUD

PHONE & TABLET

DLNA™ MEDIA DEVICES

VIRTUAL PRIVATE NETWORKS (VPN)

MOBILE NETWORK

FLIGHT MODE



Menu

More



Back

Next



2 Touch **Save** when the settings are complete.

When **Mobile hotspot** is active, other Wi-Fi enabled devices can connect by entering your hotspot's **SSID**, selecting a **Security** type and entering the correct **Wireless password**.

WI-FI MODES

For those who like to get a bit more technical, your phone supports the following Wi-Fi modes: 802.11a, b, g, n.

USB CABLES

Note: Copyright—do you have the right? Always follow the rules. See "**CONTENT COPYRIGHT**" in your legal and safety information.

To load music, pictures, videos, documents or other files from your computer, connect your tablet to your computer with a USB cable. To change the type of USB connection, touch Apps > **Settings** > **Storage** > Menu > **USB computer connection**.

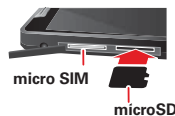
- For Microsoft™ Windows™ XP, Windows Vista and Windows 7: on your computer, choose Start, then select Windows Explorer from your list of programs. In Windows Explorer, your phone will appear as an MTP or PTP device that lets you use Windows Media Player to transfer files. For more instructions or driver files, visit www.motorola.com/myrazri.
- For Apple™ Macintosh™: use Android File Transfer, available at www.android.com/filetransfer.

MEMORY CARD & FILE MANAGEMENT

Your photos, videos and other files are automatically stored in your phone's internal memory.

Optional microSD memory cards can help store more files.

Tip: To move media from internal memory to a microSD card, touch Apps > **Settings** > **Storage** > **Manage internal storage**.



REMOVE OR ERASE A MEMORY CARD

Note: Do not remove a microSD memory card while your phone is using it or writing files on it.

Before you remove a microSD card you need to unmount it. Touch Apps > **Settings** > **Storage** > **Unmount SD card**.

To erase a microSD card, touch Apps > **Settings** > **Storage** > **Erase SD card**.

Warning: All data on the microSD card will be deleted.

USB CONNECTION

You can connect your phone to a computer with a USB cable.

Note: The first time you use a USB connection, your computer may indicate that drivers are being installed. Follow any prompts you see to complete the installation. This may take a few minutes.



CONNECT & TRANSFER



CONNECT & TRANSFER

QUICK START: CONNECT & TRANSFER

BLUETOOTH™ WIRELESS

WI-FI NETWORKS

USB CABLES

MEMORY CARD & FILE MANAGEMENT

SHARE YOUR DATA CONNECTION

DATA USE

NFC

YOUR CLOUD


PHONE & TABLET




DLNA™ MEDIA DEVICES

VIRTUAL PRIVATE NETWORKS (VPN)

MOBILE NETWORK

FLIGHT MODE

- 1 With the Home screen showing, connect a Motorola micro USB data cable from your phone's micro USB port to a USB port on your computer. Your phone should show  in the status bar.

Note: Make sure you connect the phone to a high power USB port. Typically, these are located directly on your computer. To change the type of USB connection if necessary, touch Apps  >  **Settings** > **Storage** > Menu  > **USB computer connection** > **Media device (MTP)** or **Camera (PTP)**.

- 2 Your phone and microSD memory card appear as two separate removable disks on your computer.

Drag and drop files between your computer and the phone or microSD card folders. When you have finished, use "Safely remove hardware" before disconnecting the USB cable.

Note: You can't use files on the microSD card while your phone is connected to the computer.




SHARE YOUR DATA CONNECTION

Your computer can access the Internet through your phone's mobile network—you just need a USB cable.

Tip: To share a Wi-Fi connection, see "**WI-FI HOTSPOT**".

- 1 Connect your phone to your computer using a USB cable.

Note: If your computer is running something older than Microsoft™ Windows™ 7 or Apple™ Macintosh™ OSX, it might require special configuration.

- 2 On your phone, touch Apps  >  **Settings**, then make sure the **Wi-Fi** switch is set to .
- 3 In **Settings**, touch **Tethering & mobile hotspot**, then tick **USB tethering** to start the connection.

To stop the connection, deselect **USB tethering**, then disconnect your phone from your computer.

DATA USE

You can track and set limits on your data usage.

Note: Usage information is provided to help you manage your phone. This may not match the amounts charged by your service provider, as they're not measured in the same way.

Find it: Apps  >  **Settings** > **Data usage**



Menu

More



Back

Next





CONNECT & TRANSFER

CONNECT & TRANSFER

QUICK START: CONNECT & TRANSFER

BLUETOOTH™ WIRELESS

WI-FI NETWORKS

USB CABLES

MEMORY CARD & FILE MANAGEMENT

SHARE YOUR DATA CONNECTION

DATA USE

NFC

YOUR CLOUD

PHONE & TABLET

DLNA™ MEDIA DEVICES

VIRTUAL PRIVATE NETWORKS (VPN)

MOBILE NETWORK

FLIGHT MODE



Menu

More



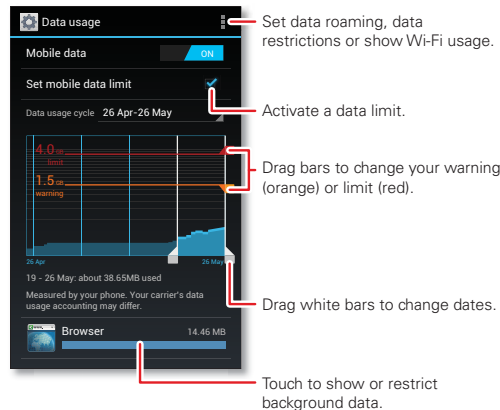
Back

Next



MOTOROLA

Your phone shows a data usage graph, followed by a list of the apps that are running, from highest data usage down to least. Touch an app to open its details. Apps that use a lot of data might also use a lot of battery power.



The data usage screen shows information and settings for data transferred over your service provider's mobile network.

Tip: To track Wi-Fi usage, touch Apps ⋮ > ⚙ Settings > Data usage > Menu ☰ > Show Wi-Fi usage.

SET A DATA USAGE WARNING

Touch Apps ⋮ > ⚙ Settings > Data usage, then drag the right side of the orange bar up/down to set the data warning level. You'll receive a notification when your data usage reaches the specified level.

SET A DATA USAGE LIMIT

Touch Apps ⋮ > ⚙ Settings > Data usage > Set mobile data limit, then drag the right side of the red bar up/down to set the data usage limit.

When you reach your data usage limit, mobile data is turned off automatically and many of your phone's features won't work correctly. You'll receive a notification when mobile data is turned off.

RESTRICT BACKGROUND DATA

Some apps transfer data in the background when you're not using them. You can restrict background data usage for individual apps to help reduce your overall data usage.

Touch Apps ⋮ > ⚙ Settings > Data usage, and scroll down to see which apps are transferring data over the mobile network. Touch an app, then touch **Restrict background data**.

You can also restrict background data for all apps across all available networks (mobile or Wi-Fi).

Find it: Menu ☰ > System settings > Data usage > Menu ☰ > Restrict background data

Note: Restricting all background data can cause some features to stop working.



CONNECT & TRANSFER



CONNECT & TRANSFER

QUICK START: CONNECT & TRANSFER

BLUETOOTH™ WIRELESS

WI-FI NETWORKS

USB CABLES

MEMORY CARD & FILE MANAGEMENT

SHARE YOUR DATA CONNECTION

DATA USE

NFC

YOUR CLOUD

PHONE & TABLET

DLNA™ MEDIA DEVICES

VIRTUAL PRIVATE NETWORKS (VPN)

MOBILE NETWORK

FLIGHT MODE



Menu

More



Back

Next



NFC

Near Field Communication technology lets you instantly share content (such as web links, contacts and photos), information and more, by touching the back of your phone to another NFC-enabled device.



NFC antenna

ACTIVATE NFC & ANDROID BEAM™

To activate NFC on your phone, touch Apps ⋮ > **Settings** > **More** > **NFC**. Make sure the tickbox is ticked.

To activate Android Beam, touch Apps ⋮ > **Settings** > **More** > **Android Beam**, then touch the power switch to turn it **ON**.

SHARE WITH ANDROID BEAM

Use Android beam to share content on your phone with another NFC-enabled phone or tablet.

Note: The other device must support NFC too.

- 1 Open the screen that contains what you want to share—map page, browser page, photo, whatever.
- 2 Touch the back of your phone to the back of the other device.

When the devices connect, you'll see **Touch to beam** on your phone.

- 3 Touch your screen to share your content.

RECEIVE WITH NFC

Receive web links, e-coupons, brochures, maps and more from an NFC tag. Look for the NFC logo on posters, signs, shop displays and other areas. Just touch the back of your phone to the logo to receive its tag information.

BLUETOOTH & WI-FI ONE-TOUCH SETUP

Just touch your phone to an NFC-enabled Bluetooth device or Wi-Fi access point to automatically pair or connect with the device.

MOBILE PAYMENT

You can use Google Wallet™ or another secure payment app to pay for your purchase (where available).

Look for the NFC logo to confirm that you can make a mobile payment. Touch the back of your phone to the payment device to pay for your purchase.

SECURITY

Mobile payments, wireless connections and content sharing all demand security:

- **Range:** NFC only works over a short range (about 4 cm/1.5 inches), so it's unlikely you'll connect by mistake—if you did, you would still have to accept the connection to send or receive information.
- **Encryption:** your phone uses the latest security, encryption and authentication features to protect your personal information for mobile payments and content sharing.



CONNECT & TRANSFER



CONNECT & TRANSFER

QUICK START: CONNECT & TRANSFER

BLUETOOTH™ WIRELESS

WI-FI NETWORKS

USB CABLES

MEMORY CARD & FILE MANAGEMENT

SHARE YOUR DATA CONNECTION

DATA USE

NFC

YOUR CLOUD

PHONE & TABLET

DLNA™ MEDIA DEVICES

VIRTUAL PRIVATE NETWORKS (VPN)

MOBILE NETWORK

FLIGHT MODE



Menu

More



Back

Next



YOUR CLOUD

One account with access to everything, everywhere—phone, tablet, computer.

SYNC YOUR GOOGLE™ ACCOUNT

When you log into the same Google account, all devices can get to all the same apps, films, books and music from "GOOGLE PLAY™"—plus you share the same Google Drive™, Gmail™, Google Calendar™ and other Google services. To add accounts to your phone, touch Apps (⋮) > ⚙️ **Settings** > **Accounts & sync**.

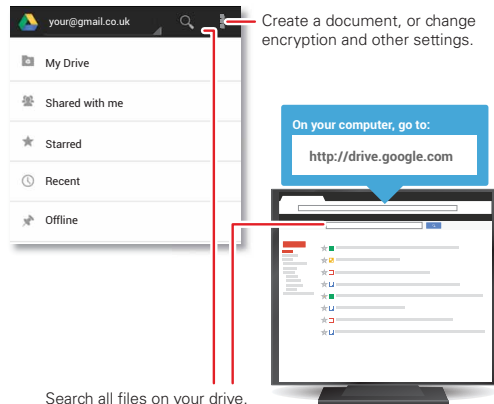
GOOGLE DRIVE™

Google Drive is everywhere you are—on the web, in your home, at the office and on the go (see "**QUICK START: WORK**"). Your files are protected in your Google account.

Find it: Apps (⋮) > 📁 **Drive**

- **Upload:** touch Menu (⋮) > **New...** > **Upload** to choose a song, file, picture or other file to upload.
- **Download or share:** touch **All items**, then touch (⌵) next to a file to share it, make it available offline and more. Touch **Offline** to show your downloaded documents.
- **Documents:** touch **My Drive** to open and edit your Google Drive.
- **Update the file list:** touch Menu (⋮) > **Refresh** to update the list of files from your computer.

- **From any browser:** go to <http://drive.google.com> and log into your account to see your files.



Search all files on your drive.

PHONE & TABLET

Your Android™ phone and tablet can work together to help you get the most out of both:

- **Your cloud:** access to all your stuff on both devices. See "**YOUR CLOUD**".
- **Transfer media and files:** upload files to your "GOOGLE DRIVE™" from any Android device on your Google account, or you can copy files to your phone's memory



CONNECT & TRANSFER



CONNECT & TRANSFER

QUICK START: CONNECT & TRANSFER

BLUETOOTH™ WIRELESS

WI-FI NETWORKS

USB CABLES

MEMORY CARD & FILE MANAGEMENT

SHARE YOUR DATA CONNECTION

DATA USE

NFC

YOUR CLOUD

PHONE & TABLET

DLNA™ MEDIA DEVICES

VIRTUAL PRIVATE NETWORKS (VPN)

MOBILE NETWORK

FLIGHT MODE



Menu

More



Back

Next



card and transfer it to other devices with "**MEMORY CARD & FILE MANAGEMENT**".

- **Phone hotspot:** if you have a Wi-Fi tablet, turn your phone into a Wi-Fi hotspot to let your tablet access the Internet anywhere—see "**WI-FI HOTSPOT**".
- **Bluetooth accessories:** if you have a Bluetooth keyboard or other accessories to use with your tablet, remember you can use them with your phone too. To connect them, see "**BLUETOOTH™ WIRELESS**".

DLNA™ MEDIA DEVICES

Use DLNA-certified computers, TVs and other devices to show the videos and pictures stored on your phone.



- 1 Make sure your phone is connected to a Wi-Fi network that has another DLNA certified device.
- 2 Touch Apps > **Gallery**, then open the picture or video you want to show.
- 3 Touch at the top of the screen.
Your phone searches for DLNA devices on your network.
- 4 Choose a device to connect.

To turn on media share so other DLNA-certified devices on your Wi-Fi network can view the videos and pictures stored on your phone, touch Apps > **Settings** > **More** > **Media share settings** > **Media share**.

For more about DLNA devices, visit www.dlna.org.

VIRTUAL PRIVATE NETWORKS (VPN)

A VPN lets you access files on a secured network (such as an office network with a firewall). Contact the network administrator to ask for VPN settings and any additional apps or other requirements.

To enter VPN settings, touch Apps > **Settings** > **More...** > **VPN**. Choose the type of VPN and enter settings from the network administrator. The network is stored in the **VPN** list so that you can select it whenever you need to connect.

MOBILE NETWORK

You should not need to change any network settings. Contact your service provider for help.

Touch Apps > **Settings** > **More...** > **Mobile networks** to see network settings options.

FLIGHT MODE

Use flight mode to turn all your wireless connections off—useful when flying. Press and hold the Power key > **Flight mode**.

Note: When you select flight mode, all wireless services are disabled. You can then turn Wi-Fi and/or Bluetooth power back on, if permitted by your airline. Other wireless voice and data services (such as calls and text messages) remain off in flight mode. Emergency calls to your region's emergency number can still be made.



PROTECT

help keep it safe



PROTECT

QUICK START: PROTECT

SCREEN LOCK

SIM LOCK

ENCRYPT YOUR PHONE

BACK UP & RESTORE

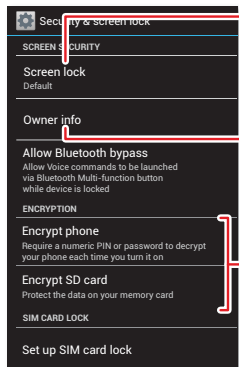
RESET

QUICK START: PROTECT

Make sure your information is protected, in case your phone is lost or stolen.

Find it: Apps > **Settings** > **Security & screen lock**

The easiest way to protect your phone is to use **Screen lock**. You can choose facial recognition, a pattern or a PIN to unlock your phone.



Change your screen lock to use a slide, facial recognition, a pattern, PIN, password or no lock.

Your info can be displayed on the unlock screen.

Encrypt the data stored on your phone or memory card.

TIPS & TRICKS

- **Face unlock:** unlock your phone by looking at it. Touch Apps > **Settings** > **Security & screen lock** > **Screen lock** > **Face unlock** and follow the prompts.
- **Forgotten pattern:** if you enter the wrong unlock **Pattern** five times, your device shows a **Forgotten pattern?** option that lets you enter your Google™ account email and password to unlock your device.
- **Forgotten password:** if you enter the wrong unlock **Password** five times, your device shows a **Forgotten password?** option that lets you enter your Google™ account email and password to unlock your device.
- **Restrict dialling:** to restrict your phone so that it can only dial a few numbers, touch Apps > **Phone** > **Menu** > **Settings** > **Fixed dialling numbers**.



Menu

More



Back

Next





PROTECT



PROTECT

QUICK START: PROTECT

SCREEN LOCK

SIM LOCK

ENCRYPT YOUR PHONE

BACK UP & RESTORE

RESET

SCREEN LOCK

To keep your phone secure, you can make the touchscreen lock when it goes to sleep.

Find it: Apps > **Settings** > **Security & screen lock** > **Screen lock**, then select the lock type:

- **None**—turn off the screen lock.
- **Default**—flick to the right to unlock.
- **Face unlock**—look at your phone to unlock it.

Follow the prompts to capture your face and enter a PIN or password (for back-up or to change the lock setting). When the screen is dark, press the Power key, then frame your face in the square at the bottom to unlock.

Note: This feature is less secure than a pattern, PIN or password.

- **Pattern**—draw a pattern to unlock.
- **PIN**—enter four to sixteen digits to unlock.
- **Password**—enter four to sixteen letters, digits or symbols to unlock.

To change when your touchscreen goes to sleep, see **"POWER KEY"**.

Note: You can make emergency calls on a locked phone (see **"EMERGENCY CALLS"**). A locked phone still rings, **but you need to unlock it to answer.**

CAN'T UNLOCK?

Face unlock: if your phone doesn't recognise your face, you'll be prompted to enter your back-up pattern or PIN code to unlock it.

Pattern, PIN or password: if you forget your pattern, PIN or password, your device shows an option that lets you enter your Google™ account email and password to unlock your device.

SIM LOCK

Caution: If you enter an incorrect PIN code three times, your phone locks your SIM card and asks for your PIN unlock code. Contact your service provider for your PIN unlock code.

To set a SIM card PIN that you must enter when you turn on your phone:

Find it: Apps > **Settings** > **Security & screen lock** > **Set up SIM card lock** > **Lock SIM card**

To set your SIM PIN, enter a 4-digit code. To change your code, choose **Change SIM PIN**.

ENCRYPT YOUR PHONE

Caution: If you forget your encryption code, you cannot recover the data stored on your phone or memory card. Encrypting your files can take an hour or more. Leave your phone plugged in and be careful not to interrupt the process.



Menu

More



Back

Next





PROTECT



MOTOROLA

PROTECT

QUICK START: PROTECT

SCREEN LOCK

SIM LOCK



ENCRYPT YOUR PHONE

BACK UP & RESTORE



RESET

Encryption protects the accounts, settings, apps and files on your phone, so that people cannot access them if your phone is stolen.

To encrypt your phone and require a PIN or password whenever you turn on your phone:

Find it: Apps  >  **Settings** > **Security & screen lock** > **Encrypt phone**

BACK UP & RESTORE

Your Google™ account data is backed up online. So, if you reset or replace your phone, just log into your Google account to restore the contacts, events and other details you synced with the account. To choose what syncs with the account, touch Apps  >  **Settings** > **Accounts & sync**, touch your Google™ account and tick things to sync. Please note that text messages, call logs and items stored on your phone will not be restored. To restore your apps from Google Play™, see **"TAKE CARE OF YOUR APPS"**.

RESET

To reset your phone to factory settings and erase all the data on your phone, touch Apps  >  **Settings** > **Privacy** > **Factory data reset** > **Reset phone**.

Warning: All downloaded apps and user data on your phone will be deleted. Data on your memory card will not be deleted.



Menu

More



Back

Next





WANT MORE?

there's always more



**WANT MORE?
GET MORE.**



Menu



Back



GET MORE.

There's more help, updates and information right here:

- **Tutorials & answers:** touch Apps > **Guide Me** to get walk-through tutorials. For **HELP TOPICS**, touch the tab.
- **Updates:** get phone updates, PC software, online help, guides and more at www.motorola.com/myrazri
- **Accessories:** find accessories for your phone at www.motorola.com/mobility.
- **Apps:** touch Apps > **Play Store**.
- **News:** get the latest news, apps, tips & tricks, videos and so much more—join us on:



YouTube™ www.youtube.com/motorola



Facebook™ www.facebook.com/motorola



Twitter www.twitter.com/motomobile



Google+ www.google.com/+



Grab a barcode scanner from Google Play and scan this code.

TIPS & TRICKS

- **Google™ help:** in Google apps touch Menu > **Help**. You can also view the Google Help Centres online at www.google.com/support.



TROUBLESHOOTING

we can help



TRoubleshooting
CRASH RECOVERY
SERVICE & REPAIRS

CRASH RECOVERY

In the unlikely event that your phone stops responding to touches and key presses, try a forced reboot—press and hold both the Power and Volume down keys for more than 15 seconds. If necessary, hold the Power key to turn your phone back on.

SERVICE & REPAIRS

If you have questions or need assistance, we're here to help.

Go to www.motorola.com/myrazri, where you can select from a number of customer care options. You can also contact the Motorola Customer Support Centre at 0870-9010-555 (UK) and 1850-909-555 (Ireland).



Menu

More



Back

Next





Product safety & legal

safe, smart, protected



PRODUCT SAFETY & LEGAL

BATTERY USE & SAFETY

BATTERY CHARGING

THIRD PARTY ACCESSORIES

DRIVING PRECAUTIONS

SEIZURES, BLACKOUTS & EYESTRAIN

HIGH VOLUME

REPETITIVE MOTION

CHILDREN

GLASS PARTS

OPERATIONAL WARNINGS

RF ENERGY

REGULATORY INFORMATION

LOCATION

NAVIGATION

PRIVACY & DATA SECURITY

USE & CARE

RECYCLING

SOFTWARE COPYRIGHT

CONTENT COPYRIGHT

OS INFORMATION

COPYRIGHT & TRADEMARKS



Menu

More



Back

Next



Battery use & safety

The following battery use and safety information applies to all Motorola mobile devices.

If your mobile device uses a non-removable main battery (as stated in your product information), **details related to handling and replacing your battery should be disregarded**—the battery should only be replaced by a Motorola-approved service facility and **any attempt to remove or replace your battery, unless performed by a service representative, may damage the product and void your warranty.**

Important: handle and store batteries properly to avoid injury or damage. Most battery safety issues arise from improper handling of batteries and particularly from the continued use of damaged batteries.

DON'Ts

- **Don't disassemble, crush, puncture, shred or otherwise attempt to change the form of your battery.**
- **Don't use tools, sharp objects or excessive force to insert or remove the battery as this can damage the battery.**
- **Don't let the mobile device or battery come in contact with liquids.*** Liquids can get into the mobile device's circuits, leading to corrosion.
- **Don't allow the battery to touch metal objects.** If metal objects, such as jewellery, stay in prolonged contact with the battery contact points, the battery could become very hot.
- **Don't place your mobile device or battery near a heat source.*** High temperatures can cause the battery to swell, leak or malfunction.
- **Don't dry a wet or damp battery with an appliance or heat source,** such as a hair-dryer or microwave oven.

DOs

- **Do avoid leaving your mobile device in your car in high temperatures.***
- **Do avoid dropping the mobile device or battery.*** Dropping these items, especially on a hard surface, can potentially cause damage.*
- **Do contact your service provider or Motorola if your mobile device or battery has been damaged in any of the ways listed here.**

*** Note:** always make sure that any battery, connector and compartment covers are closed and secure to avoid direct exposure of the battery to any of these conditions, even if your product information states that your **mobile device** can resist damage from these conditions.

Important: Motorola recommends you always use Motorola-branded batteries and chargers for quality assurance and safeguards. Motorola's warranty does not cover damage to the mobile device caused by non-Motorola batteries and/or chargers. To help you identify authentic Motorola batteries from non-original or counterfeit batteries (that may not

have adequate safety protection), Motorola provides holograms on its batteries. You should confirm that any battery you purchase has a "Motorola Original" hologram. If you see a message on your display such as **Invalid battery** or **Unable to charge**, take the following steps:

- Remove the battery and inspect it to confirm that it has a "Motorola Original" hologram;
- If there is no hologram, the battery is not a Motorola battery;
- if there is a hologram, replace the battery and try charging it again;
- If the message remains, contact a Motorola authorised service centre.

Warning: Use of a non-Motorola battery or charger may present a risk of fire, explosion, leakage or other hazard.

Proper and safe battery disposal and recycling: proper battery disposal is not only important for safety, it also benefits the environment. You can recycle your used batteries in many retail or service provider locations. Additional information on proper disposal and recycling can be found at www.motorola.com/recycling

Disposal: promptly dispose of used batteries in accordance with local regulations. Contact your local recycling centre or national recycling organisations for more information on how to dispose of batteries.



Warning: Never dispose of batteries in a fire because they may explode.

Battery charging

Notes for charging your product's battery:

- During charging, keep your battery and charger near room temperature for efficient battery charging.
- New batteries are not fully charged.
- New batteries or batteries stored for a long time may take more time to charge.
- Motorola batteries and charging systems have circuitry that protects the battery from damage from overcharging.

Third party accessories

Use of third party accessories, including, but not limited to, batteries, chargers, headsets, covers, cases, screen protectors and memory cards, may have an impact on your mobile device's performance. In some circumstances, third party accessories can be dangerous and may void your mobile device's warranty. For a list of Motorola accessories, visit www.motorola.com/products

Driving precautions

Responsible and safe driving is your primary responsibility when behind the wheel of a vehicle. Using a mobile device or accessory for a call or other application whilst driving may cause



Product safety & legal

PRODUCT SAFETY & LEGAL

BATTERY USE & SAFETY

BATTERY CHARGING

THIRD PARTY ACCESSORIES

DRIVING PRECAUTIONS

SEIZURES, BLACKOUTS & EYESTRAIN

HIGH VOLUME

REPETITIVE MOTION

CHILDREN

GLASS PARTS

OPERATIONAL WARNINGS

RF ENERGY

REGULATORY INFORMATION

LOCATION

NAVIGATION

PRIVACY & DATA SECURITY

USE & CARE

RECYCLING

SOFTWARE COPYRIGHT

CONTENT COPYRIGHT

OS&S INFORMATION

COPYRIGHT & TRADEMARKS

distraction and may be prohibited or restricted in certain areas—always obey the laws and regulations on the use of these products.

While driving, NEVER:

- type, read, enter or review texts, emails or any other written data.
- surf the web.
- input navigation information.
- perform any other functions that divert your attention from driving.

While driving, ALWAYS:

- keep your eyes on the road.
- use a hands-free device if available or required by law in your area.
- enter destination information into a navigation device **before** driving.
- use voice-activated features (such as voice dial) and speaking features (such as audible directions), if available.
- obey all local laws and regulations for the use of mobile devices and accessories in the vehicle.
- end your call or other task if you cannot concentrate on driving.

remember to follow the "Smart practices whilst driving" at

www.motorola.com/callsmart (in English only).

Seizures, blackouts & eyestrain

To reduce eyestrain and avoid headaches, it is always a good idea to hold the screen at a comfortable distance from your eyes, use in a well-lit area and take frequent breaks.

Some people may be susceptible to seizures or blackouts (even if they have never had one before) when exposed to flashing lights or light patterns, such as when playing video games or watching videos with flashing-light effects.

Discontinue use and consult a doctor if any of the following symptoms occur: seizures, blackout, convulsion, eye or muscle twitching, loss of awareness or disorientation.

If you or someone in your family has experienced seizures or blackouts, please consult your doctor before using an application that produces flashing-light effects on your mobile device.

Caution about high volume usage

Warning: Exposure to loud noise from any source for extended periods of time may affect your hearing. The louder the volume sound level, the less time is required before your hearing could be affected. To protect your hearing:

- Limit the amount of time you use headsets or headphones at high volume.
- Avoid turning up the volume to block out noisy surroundings.
- Turn the volume down if you can't hear people speaking near you.



If you experience hearing discomfort, including the sensation of pressure or fullness in your ears, ringing in your ears or muffled speech, you should stop listening to the device through your headset or headphones and get your hearing checked.

For more information about hearing, see our website at

<http://direct.motorola.com/hellomoto/nss/AcousticSafety.asp> (in English only).

Repetitive motion

When you repetitively perform actions such as pressing keys or entering finger-written characters, you may experience occasional discomfort in your hands, arms, shoulders, neck or other parts of your body. If you continue to have discomfort during or after such use, stop use and see a doctor.

Children

Keep your mobile device and its accessories away from small children. These

products are not toys and may be hazardous to small children. For example:

- A choking hazard may exist for small, detachable parts.
- Improper use could result in loud sounds, possibly causing hearing injury.
- Improperly handled batteries could overheat and cause a burn.

Supervise access for older children. Similar to a computer, if an older child does use your mobile device, you may want to monitor their access to help prevent:

- exposure to inappropriate apps or content.
- improper use of apps or content.
- loss of data.

Glass parts

Some parts of your mobile device may be made of glass. This glass could break if the product receives a substantial impact. If glass breaks, do not touch or attempt to remove. Stop using your mobile device until the glass is replaced by a qualified service centre.

Operational warnings

Obey all posted signs when using mobile devices in public areas.

Potentially explosive areas

Potentially explosive areas are often, but not always, posted and can include blasting areas, fuelling stations, fuelling areas (such as below decks on boats), fuel or chemical transfer or storage facilities, or areas where the air contains chemicals or particles, such as grain dust or metal powders.



Menu

More



Back

Next





Product safety & legal



PRODUCT SAFETY & LEGAL

BATTERY USE & SAFETY

BATTERY CHARGING

THIRD PARTY ACCESSORIES

DRIVING PRECAUTIONS

SEIZURES, BLACKOUTS & EYESTRAIN

HIGH VOLUME

REPETITIVE MOTION

CHILDREN

GLASS PARTS

OPERATIONAL WARNINGS

RF ENERGY

REGULATORY INFORMATION

LOCATION

NAVIGATION

PRIVACY & DATA SECURITY

USE & CARE

RECYCLING

SOFTWARE COPYRIGHT

CONTENT COPYRIGHT

OSS INFORMATION

COPYRIGHT & TRADEMARKS

When you are in such an area, turn off your mobile device and do not remove, install or charge batteries, unless it is a radio product type especially qualified for use in such areas and certified as "Intrinsically safe" (for example, Factory Mutual, CSA or UL approved). In such areas, sparks can occur and cause an explosion or fire.

Symbol key

Your battery, charger or mobile device may contain symbols, defined as follows:

Symbol	Definition
	Important safety information follows.
	Do not dispose of your battery or mobile device in a fire.
	Your battery or mobile device may require recycling in accordance with local laws. Contact your local regulatory authorities for more information.
	Do not dispose of your battery or mobile device with your household waste. See "Recycling" for more information.
	Do not use tools.
	For indoor use only.
	Listening at full volume to music or voice through a headset may damage your hearing.

Radio frequency (RF) energy

Exposure to RF energy

Your mobile device contains a transmitter and receiver. When it is ON, it receives and transmits RF energy. When you communicate using your mobile device, the system handling your call controls the power level at which your mobile device transmits.

Your mobile device is designed to comply with local regulatory requirements in your country concerning exposure of human beings to RF energy.

RF energy operational precautions

For optimum mobile device performance and to be sure that human exposure to RF energy does not exceed the guidelines set forth in the relevant standards, always follow these instructions and precautions:

- When placing or receiving a phone call, hold your mobile device just like you would a landline phone.
- If you wear the mobile device on your body, ensure that the device is positioned at least 2.5 cm (1 inch) away from the body and if you use an accessory case or holder, ensure it is free of any metal.

Government of India

The Government of India requires the following information to be provided as a measure of precaution:

- use a wireless hands-free system (headphone, headset) with a low power Bluetooth emitter.
- make sure the mobile device has a low SAR value.
- keep your calls short or send a text message (SMS) instead. This advice applies especially to children, adolescents and pregnant women.
- Use the mobile device when the signal quality is good.

Motorola emphasizes that it has never been proven that non-compliance with these recommendations, or the use of a mobile device in general, is likely to produce effects that could be detrimental to the health of users. The inclusion of these recommendations does not reflect the opinion of Motorola, but is done so in compliance with government requirements.

RF energy interference/compatibility

Nearly every electronic device is subject to RF energy interference from external sources if inadequately shielded, designed or otherwise configured for RF energy compatibility. In some circumstances, your mobile device may cause interference with other devices.



Menu

More



Back

Next





Product safety & legal

PRODUCT SAFETY & LEGAL

BATTERY USE & SAFETY

BATTERY CHARGING

THIRD PARTY ACCESSORIES

DRIVING PRECAUTIONS

SEIZURES, BLACKOUTS & EYESTRAIN

HIGH VOLUME

REPETITIVE MOTION

CHILDREN

GLASS PARTS

OPERATIONAL WARNINGS

RF ENERGY

REGULATORY INFORMATION

LOCATION

NAVIGATION

PRIVACY & DATA SECURITY

USE & CARE

RECYCLING

SOFTWARE COPYRIGHT

CONTENT COPYRIGHT

OSS INFORMATION

COPYRIGHT & TRADEMARKS

Follow instructions to avoid interference problems

Turn off your mobile device in any location where posted notices instruct you to do so, such as hospitals or healthcare facilities.

In an aircraft, turn off your mobile device whenever instructed to do so by airline staff. If your mobile device offers a flight mode or similar feature, consult airline staff about using it in-flight.

Medical devices

If you have a medical device, including an implantable medical device such as a pacemaker or defibrillator, consult your healthcare provider and the device manufacturer's directions before using this mobile device.

Persons with implantable medical devices should observe the following precautions:

- ALWAYS keep the mobile device more than 20 centimetres (8 inches) from the implantable medical device when the mobile device is turned ON.
- DO NOT carry the mobile device in the breast pocket.
- Use the ear opposite the implantable medical device to minimise the potential for interference.
- Turn OFF the mobile device immediately if you have any reason to suspect that interference is taking place.

Regulatory information

Your Motorola mobile device is designed to comply with national and international regulatory requirements. For full compliance statements and details, please refer to the regulatory information in your printed product guide.

Location services

The following information is applicable to Motorola mobile devices that provide location-based functionality. Location sources can include GPS, AGPS and Wi-Fi. Your mobile device can use *Global Positioning System* (GPS) signals for location-based applications. GPS uses satellites controlled by the U.S. government that are subject to changes implemented in accordance with the Department of Defense policy and the Federal Radionavigation Plan. These changes may affect the performance of location technology on your mobile device.

Your mobile device can also use *Assisted Global Positioning System* (AGPS), which obtains information from the mobile network to improve GPS performance. AGPS uses your wireless service provider's network and therefore airtime, data charges and/or additional charges may apply in accordance with your service plan. Contact your wireless service provider for details. Your mobile device can also use *Wi-Fi* signals to determine your approximate location, using information from known and available Wi-Fi networks.



Your location

Location-based information includes information that can be used to determine the approximate location of a mobile device. Mobile devices that are connected to a wireless network transmit location-based information. Devices enabled with location technology also transmit location-based information. Additionally, if you use applications that require location-based information (e.g. driving directions), such applications transmit location-based information. This location-based information may be shared with third parties, including your wireless service provider, applications providers, Motorola and other third parties providing services.

Emergency calls

When you make an emergency call, the mobile network may activate the AGPS technology in your mobile device to tell the emergency responders your approximate location. AGPS has limitations and **might not work in your area**. Therefore:

- Always tell the emergency responder your location to the best of your ability; and
- Remain on the phone for as long as the emergency responder instructs you.

Navigation

The following information is applicable to Motorola mobile devices that provide navigation features.

When using navigation features, note that mapping information, directions and other navigational data may contain inaccurate or incomplete data. In some countries, complete information may not be available. Therefore, you should visually confirm that the navigational instructions are consistent with what you see. All drivers should pay attention to road conditions, closures, traffic and all other factors that may impact driving. Always obey posted road signs.

Privacy & data security

Motorola understands that privacy and data security are important to everyone. Given that some features of your mobile device may affect your privacy or data security, please follow these recommendations to enhance protection of your information:

- **Monitor access**—Keep your mobile device with you and do not leave it where others may have unmonitored access. Use your device's security and lock features, where available.
- **Keep software up to date**—If Motorola or a software/application vendor releases a patch or software fix for your mobile device that updates the device's security, install it as soon as possible.



Menu

More



Back

Next





Product safety & legal



PRODUCT SAFETY & LEGAL

BATTERY USE & SAFETY

BATTERY CHARGING

THIRD PARTY ACCESSORIES

DRIVING PRECAUTIONS

SEIZURES, BLACKOUTS & EYESTRAIN

HIGH VOLUME

REPETITIVE MOTION

CHILDREN

GLASS PARTS

OPERATIONAL WARNINGS

RF ENERGY

REGULATORY INFORMATION

LOCATION

NAVIGATION

PRIVACY & DATA SECURITY

USE & CARE

RECYCLING

SOFTWARE COPYRIGHT

CONTENT COPYRIGHT

OS&S INFORMATION

COPYRIGHT & TRADEMARKS

- **Secure personal information**—Your mobile device can store personal information in various locations including your SIM card, memory card and phone memory. Make sure you remove or clear all personal information before you recycle, return or give away your device. You can also back up your personal data to transfer to a new device.

Note: For information on how to back up or wipe data from your mobile device, go to www.motorola.com/support

- **Online accounts**—Some mobile devices provide a Motorola online account (such as MOTOBLUR). Go to your account for information on how to manage the account and how to use security features such as remote wipe and device location (where available).
- **Applications and updates**—Choose your apps and updates carefully and install from trusted sources only. Some apps can impact your phone's performance and/or have access to private information including account details, call data, location details and network resources.
- **Wireless**—For mobile devices with Wi-Fi features, only connect to trusted Wi-Fi networks. Also, when using your device as a hotspot (where available) use network security. These precautions will help prevent unauthorised access to your device.
- **Location-based information**—Mobile devices enabled with location based technologies such as GPS, AGPS or Wi-Fi, can transmit location-based information. See "Location services" for more details.
- **Other information your device may transmit**—Your device may also transmit testing and other diagnostic (including location-based) information, and other non-personal information to Motorola or other third-party servers. This information is used to help improve products and services offered by Motorola.

If you have further questions regarding how the use of your mobile device may impact your privacy or data security, please contact Motorola at privacy@motorola.com, or contact your service provider.

Use & care

To care for your Motorola mobile device, please observe the following:



liquids

Don't expose your mobile device to water, rain, extreme humidity, sweat or other liquids.



drying

Don't try to dry your device using a microwave oven, conventional oven or dryer, as this may damage the device.



extreme heat or cold

Don't store or use your mobile device in temperatures below -10°C (14°F) or above 60°C (140°F). Don't recharge your mobile device in temperatures below 0°C (32°F) or above 45°C (113°F).



dust and dirt

Don't expose your mobile device to dust, dirt, sand, food or other inappropriate materials.



cleaning

To clean your device, use only a dry soft cloth. Do not use alcohol or other cleaning solutions.



shock and vibration

Don't drop your mobile device.



protection

To help protect your mobile device, always make sure that any battery, connector and compartment covers are closed and secure.

Recycling

Mobile devices & accessories

Please do not dispose of mobile devices or electrical accessories (such as chargers, headsets or batteries) with your household waste or in a fire. These items should be disposed of in accordance with the national collection and recycling schemes operated by your local or regional authority. Alternatively, you may return unwanted mobile devices and electrical accessories to any Motorola approved service centre in your region. Details of Motorola-approved national recycling schemes and further information on Motorola recycling activities can be found at: www.motorola.com/recycling



Packaging & product guides

Product packaging and product guides should only be disposed of in accordance with national collection and recycling requirements. Please contact your regional authorities for more details.



Menu

More



Back

Next





Product safety & legal



PRODUCT SAFETY & LEGAL

BATTERY USE & SAFETY

BATTERY CHARGING

THIRD PARTY ACCESSORIES

DRIVING PRECAUTIONS

SEIZURES, BLACKOUTS & EYESTRAIN

HIGH VOLUME

REPETITIVE MOTION

CHILDREN

GLASS PARTS

OPERATIONAL WARNINGS

RF ENERGY

REGULATORY INFORMATION

LOCATION

NAVIGATION

PRIVACY & DATA SECURITY

USE & CARE

RECYCLING

SOFTWARE COPYRIGHT

CONTENT COPYRIGHT

OSS INFORMATION

COPYRIGHT & TRADEMARKS

Software copyright

Motorola products may include copyrighted Motorola and third-party software stored in semiconductor memories or other media. Laws in the United States and other countries preserve for Motorola and third-party software providers certain exclusive rights for copyrighted software, such as the exclusive rights to distribute or reproduce the copyrighted software. Accordingly, any copyrighted software contained in Motorola products may not be modified, reverse-engineered, distributed or reproduced in any manner to the extent allowed by law. Furthermore, the purchase of Motorola products shall not be deemed to grant, either directly or by implication or estoppel or otherwise, any licence under the copyrights, patents or patent applications of Motorola or any third-party software provider, except for the normal, non-exclusive, royalty-free licence to use that arises by operation of law in the sale of a product.

Content copyright

The unauthorised copying of copyrighted materials is contrary to the provisions of the copyright laws of the United States and other countries. This device is intended solely for copying non-copyrighted materials, materials in which you own the copyright or materials which you are authorised or legally permitted to copy. If you are uncertain about your right to copy any material, please contact your legal advisor.

Open source software information

For instructions on how to obtain a copy of any source code being made publicly available by Motorola related to software used in this Motorola mobile device, you may send your request in writing to the address below. Please make sure that the request includes the model number and the software version number.

MOTOROLA MOBILITY LLC

OSS Management

600 North US Hwy 45

Libertyville, IL 60048

USA

The Motorola website opensource.motorola.com (in English only) also contains information regarding Motorola's use of open source.

Motorola has created the opensource.motorola.com website to serve as a portal for interaction with the software community-at-large.

To view additional information regarding licences, acknowledgements and required copyright notices for open source packages used in this Motorola mobile device, please go to Apps

> **Settings** > **About phone** > **Legal information**

> **Open source licences**. In addition, this Motorola device may include self-contained applications that present supplemental notices for open source packages used in those applications.



Menu

More



Back

Next





PRODUCT SAFETY & LEGAL

BATTERY USE & SAFETY

BATTERY CHARGING

THIRD PARTY ACCESSORIES

DRIVING PRECAUTIONS

SEIZURES, BLACKOUTS & EYESTRAIN

HIGH VOLUME

REPETITIVE MOTION

CHILDREN

GLASS PARTS

OPERATIONAL WARNINGS

RF ENERGY

REGULATORY INFORMATION

LOCATION

NAVIGATION

PRIVACY & DATA SECURITY

USE & CARE

RECYCLING

SOFTWARE COPYRIGHT

CONTENT COPYRIGHT

OS INFORMATION

COPYRIGHT & TRADEMARKS

Copyright & trademarks

www.motorola.com

Certain features, services and applications are network-dependent and may not be available in all areas; additional terms, conditions and/or charges may apply. Contact your service provider for details.

All features, functionality and other product specifications, as well as the information contained in this guide, are based upon the latest available information and believed to be accurate at the time of printing. Motorola reserves the right to change or modify any information or specifications without notice or obligation.

Note: the images in this guide are examples only.

MOTOROLA and the Stylised M Logo are trademarks or registered trademarks of Motorola Trademark Holdings, LLC. Android, Google and other trademarks are owned by Google Inc. The Android robot is reproduced or modified from work created and shared by Google and used according to terms described in the Creative Commons 3.0 Attribution Licence. All other product or service names are the property of their respective owners.

© 2012 Motorola Mobility LLC. All rights reserved.

Caution: Motorola does not take responsibility for changes/modification to the transceiver.

Bluetooth ID: XXXXXX

Product ID: MOTOROLA **RAZR™** i (Model XT890)

Manual number: 68017175030



Menu

More



Back

Next





Product safety & legal



Menu

More



Back

Next

