

Ellett Brothers®

A Division of United Sporting Companies®

FM 180
Effective: 02/10/14 - 03/07/14

1-800-845-3711
www.ellettbrothers.com

GARMIN®

Check Out These New Items From Garmin



ECHOMAP™ 50DV

- Fishfinder/chartplotter combo preloaded w/maps
- 5.0" diagonal VGA color display (480 x 640 pixels)
- Built-in DownVu™ scanning sonar
- Garmin 8-pin all-in-one HD-ID™ & DownVu™ transducer w/transom & trolling motor mounts
- Dual-frequency (50/200 kHz) & Dual-beam (77/200 kHz) sonar capable
- Internal 10Hz high-sensitivity GPS/GLONASS receiver updates your position & heading 10X per sec. to accurately mark & easily navigate 5000 waypoints & 100 routes
- Sonar displays bottom lock, water temp. log & graph, & sonar recording
- Sonar-recording capability saves digital info for PC playback using HomePort™ planning software
- Transmit Power (Sonar): 500W (RMS) / 4000W (peak to peak)
- Voltage Range (Sonar): 10-32 Vdc input
- Max. Depth (Sonar): 2300 ft @ 77kHz (freshwater), 1100 ft @ 77kHz (saltwater)
- Internal antenna
- Waterproof (IPX7)
- Accepts (2) microSD™ cards
- NMEA 0183 Port Connections: (2) input & (2) output
- Wireless connectivity
- Compatible w/Garmin Sonar, NMEA 0183, & BlueChart® Mobile
- Supports AIS (tracks target ships position) & DSC (displays position data from DSC-capable VHF radio)
- Features tide tables
- Includes power/data cable, tilt/swivel mount, flush mount, protective cover & documentation
- Dimensions: 5.9" x 6.1" x 2.4"
- Wt.: 1.6 lbs.

Order #	Mfg. #	Description	Sugg. Ret.
5027588	010-01099-00	Preloaded w/U.S. LakeVu™ HD Maps	\$649.99 \$519.99
5027589	010-01300-00	Preloaded w/BlueChart® U.S. Offshore Maps	749.99 599.99



ECHOMAP™ 70DV

- Fishfinder/chartplotter combo preloaded w/maps
- 7.0" diagonal WVGA touchscreen w/pinch-to-zoom (800 x 480 pixels)
- Built-in DownVu™ scanning sonar
- Garmin 8-pin all-in-one HD-ID™ & DownVu™ transducer w/transom & trolling motor mounts
- Dual-frequency (50/200 kHz) & Dual-beam (77/200 kHz) sonar capable
- Internal 10Hz high-sensitivity GPS/GLONASS receiver updates your position & heading 10X per sec. to accurately mark & easily navigate 5000 waypoints & 100 routes
- Sonar displays bottom lock, water temp. log & graph, & sonar recording
- Sonar-recording capability saves digital info for PC playback using HomePort™ planning software
- Transmit Power (Sonar): 500W (RMS) / 4000W (peak to peak)
- Voltage Range (Sonar): 10-32 Vdc input
- Max. Depth (Sonar): 2300 ft @ 77kHz (freshwater), 1100 ft @ 77kHz (saltwater)
- Internal antenna
- Waterproof (IPX7)
- Accepts (2) microSD™ cards
- Port Connections: (2) input & (2) output for NMEA 0183; (1) for Garmin Marine Network™
- Wireless connectivity
- Compatible w/Garmin Sonar, NMEA 0183, Garmin Marine Network™ (limited capabilities), & BlueChart® Mobile
- Supports AIS (tracks target ships position) & DSC (displays position data from DSC-capable VHF radio)
- Features tide tables
- Includes power/data cable, bail mount, flush mount, protective cover & documentation
- Dimensions: 9.0" x 5.6" x 2.4"
- Wt.: 2.0 lbs.
- NOTE: Supports SideVu™ scanning w/CHIRP sonar technology (requires GCV™ 10, sold separately)

Order #	Mfg. #	Description	Sugg. Ret.
5027590	010-01130-00	Preloaded w/U.S. LakeVu™ HD Maps	\$1149.99 \$919.99
5027591	010-01301-00	Preloaded w/BlueChart® U.S. Offshore Maps	1249.99 999.99



GPSMAP® 1040XS

- Keyed chartplotter/sonar combo preloaded w/both U.S. LakeVu™ HD & BlueChart® g2 U.S. offshore maps for cruising, sailing or fishing
- 10.4" diagonal SVGA color display (800 x 600 pixels)
- Built-in Garmin HD-ID™ 1kW sonar, CHIRP & DownVu™ scanning sonar w/CHIRP technology
- Dual-frequency (50/200 kHz) & Dual-beam (77/200 kHz) sonar capable
- Internal high-sensitivity 10Hz GPS/GLONASS receiver updates your position & heading 10X per sec. to accurately mark & easily navigate up to 5000 waypoints & 100 routes
- Supports all Garmin marine radar
- Sonar displays bottom lock, water temp. log & graph, & sonar recording
- Transmit Power (Sonar): 1 kW traditional; 600W CHIRP
- Voltage Range (Sonar): 10-32 Vdc input
- Internal antenna w/external connection
- Waterproof (IPX7)
- Accepts (2) SD™ cards
- Supported sailing features include laylines, enhanced wind rose, heading & course-over-ground lines, & true wind data fields
- Supports AIS (tracks target ships position) & DSC (displays position data from DSC-capable VHF radio)
- Features tide tables
- Wireless connectivity
- Port Connections: (2) input & (2) output for NMEA 0183; (1) for Garmin Marine Network™
- Compatible w/Garmin Radar, GCV™ 10 Sonar, NMEA 2000®, NMEA 0183, Garmin Marine Network™ (limited capabilities), BlueChart® Mobile, Garmin Helm, & SiriusXM™ weather & radio
- Includes power/data cable, bail mount, flush mount, protective cover & documentation
- Dimensions: 14.1" x 9.3" x 2.9"
- Wt.: 4.7 lbs.
- NOTE: Add the GCV™ 10 (sold separately) for both DownVu™ & SideVu™ scanning sonar w/CHIRP technology to display crystal-clear sonar images detailing fishing hot spots, ship wreckage or diving location

Order #	Mfg. #	Description	Sugg. Ret.
5027600	010-01184-01	No Transducer	\$1999.99 \$1599.99
5027599	010-01184-00	Includes 8-pin all-in-one 77/200 kHz HD-ID™/DownVu™ Transducer w/Transom & Trolling Motor Mounts	2099.99 1679.99

GPS Speed
9.8 _{k_t}

GPS Hdg
241 _{°M}

Depth
64.6 _{f_t}

Temp
76.6 _{°F}

1.8 _{mph}



Check Out
These New
Items From
Garmin



ECHO™ 301C

•Fishfinder w/HD-ID™ tracking technology •3.5" diagonal QVGA color display (240 x 320 pixels) •Dual-frequency (50/200 kHz) & Dual-beam (77/200 kHz) sonar capable •Advanced HD-ID™ sonar technology •Transmit Power: 300W (RMS)/2400W (peak to peak) •Voltage Range: 10V - 28V input •Max. Depth: 1750 ft. @ 77kHz (freshwater) •Cone Angle: 60° or 120° (dual beam) •Split-screen zoom •Ultrascreen™ (displays fish targets at higher boat speeds) •Fish Symbol ID (helps identify fish targets) •AutoGain Technology (minimizes clutter, maximizes targets) •Whiteline (indicates hard or soft bottom) •Adjustable depth line (measures depth of underwater objects) •A-Scope (real time display of fish passing through transducer beam) •Bottom lock (shows return from the bottom up) •Water temperature log & graph •Water temperature sensor •Water speed capable (displays speed on water) •Audible alarms •Waterproof (IPX7) •Includes power cable, tilt/swivel quick-release mount, & documentation •Dimensions: 4.1" x 5.8" x 2.8" •Wt.: 11.6 oz.

Order #	Mfg. #	Description	Sugg.Ret.	
5027613	010-01260-01	No Transducer	\$199.99	\$159.99
5027612	010-01260-00	Dual-Beam Transducer w/Transom Mount & Trolling Motor Mount	219.99	175.99

ECHO™ 301DV

•Fishfinder w/Garmin DownVü™ scanning sonar & HD-ID™ tracking technology •3.5" diagonal QVGA color display (240 x 320 pixels) •Dual-frequency (50/200 kHz) & Dual-beam (77/200 kHz) sonar capable •4-pin all-in-one transducer delivers both advanced HD-ID™ 77/200 kHz sonar & DownVü™ scanning sonar & includes transom & trolling motor mounting kits •Transmit Power: 300W (RMS)/2400W (peak to peak) •Voltage Range: 10V - 28V input •Max. Depth: 1750 ft. @ 77kHz (freshwater) •Split-screen zoom •Ultrascreen™ (displays fish targets at higher boat speeds) •Fish Symbol ID (helps identify fish targets) •AutoGain Technology (minimizes clutter, maximizes targets) •Whiteline (indicates hard or soft bottom) •Adjustable depth line (measures depth of underwater objects) •A-Scope (real time display of fish passing through transducer beam) •Bottom lock (shows return from the bottom up) •Water temperature sensor •Audible alarms •Waterproof (IPX7) •Includes power cable, tilt/swivel quick-release mount, & documentation •Dimensions: 4.1" x 5.8" x 2.8" •Wt.: 11.6 oz.

5027605	010-01255-00			\$215.99
Sugg.Ret. \$269.99				



ECHO™ 551C

•Fishfinder w/HD-ID™ tracking technology & sonar history rewind •5.0" diagonal QVGA color display (234 x 320 pixels) •Dual-frequency (50/200 kHz) & Dual-beam (77/200 kHz) sonar capable •Advanced HD-ID™ sonar technology •Transmit Power: 500W (RMS)/4000W (peak to peak) •Voltage Range: 10V - 28V input •Maximum Depth: 2300 ft. @ 77kHz (freshwater) •Cone Angle: 60° or 120° (dual beam) •Split-screen zoom •Ultrascreen™ (displays fish targets at higher boat speeds) •Fish Symbol ID (helps identify fish targets) •AutoGain Technology (minimizes clutter, maximizes targets) •Whiteline (indicates hard or soft bottom) •Adjustable depth line (measures the depth of underwater objects) •A-Scope (real time display of fish passing through transducer beam) •Bottom lock (shows return from the bottom up) •Water temperature log & graph •Water temperature sensor •Water speed capable (displays speed on the water) •Audible alarms •Waterproof (IPX7) •Includes power cable, tilt/swivel quick-release mount, & documentation •Dimensions: 6.0" x 5.9" x 1.8" •Wt.: 17.6 oz.

Order #	Mfg. #	Description	Sugg.Ret.	
5027615	010-01261-01	No Transducer	\$229.99	\$183.99
5027614	010-01261-00	Dual-Beam Transducer w/Transom Mount & Trolling Motor Mount	249.99	199.99

ECHO™ 551DV

•Fishfinder w/Garmin DownVü™ scanning sonar, HD-ID™ tracking technology & sonar history rewind •5.0" diagonal high-resolution VGA color display (480 x 640 pixels) •Dual-frequency (50/200 kHz) & Dual-beam (77/200 kHz) sonar capable •4-pin all-in-one transducer delivers both advanced HD-ID™ 77/200 kHz sonar & DownVü™ scanning sonar & includes transom & trolling motor mounting kits •Transmit Power: 500W (RMS)/4000W (peak to peak) •Voltage Range: 10V - 28V input •Max. Depth: 2300 ft. @ 77kHz (freshwater) •Split-screen zoom •Ultrascreen™ (displays fish targets at higher boat speeds) •Fish Symbol ID (helps identify fish targets) •AutoGain Technology (minimizes clutter, maximizes targets) •Whiteline (indicates hard or soft bottom) •Adjustable depth line (measures depth of underwater objects) •A-Scope (real time display of fish passing through transducer beam) •Bottom lock (shows return from the bottom up) •Water temperature sensor •Audible alarms •Waterproof (IPX7) •Includes power cable, tilt/swivel quick-release mount, & documentation •Dimensions: 6.0" x 5.9" x 1.8" •Wt.: 17.6 oz.

5027606	010-01256-00			\$335.99
Sugg.Ret. \$419.99				



ECHO™ 101

•Fishfinder w/HD-ID™ tracking technology •4.0" diagonal 8-level grayscale FTSN display (160 x 256 pixels) •Advanced HD-ID™ sonar technology •Dual-beam transducer w/transom mount & trolling motor mount •Transmit Power: 200W (RMS)/1600W (peak to peak) •Voltage Range: 10V - 20V input •Max. Depth: 1500 ft. @ 200kHz (freshwater) •Beam Width: 60° •Ultrascreen™ (displays fish targets at higher boat speeds) •Fish Symbol ID (helps identify fish targets) •AutoGain Technology (minimizes clutter, maximizes targets) •Whiteline (indicates hard or soft bottom) •Water temperature sensor •Audible alarms •Waterproof (IPX7) •Includes power cable, tilt/swivel quick-release mount, & documentation •Dimensions: 4.1" x 5.8" x 2.8" •Wt.: 9.5 oz.

5027607	010-01257-00			\$79.99
Sugg.Ret. \$99.99				

ECHO™ 151

•Fishfinder w/HD-ID™ tracking technology •4.0" diagonal 8-level grayscale FTSN display (160 x 256 pixels) •Dual-frequency (50/200 kHz) & Dual-beam (77/200 kHz) sonar capable •Advanced HD-ID™ sonar technology •Dual-beam transducer w/transom mount & trolling motor mount •Transmit Power: 200W (RMS)/1600W (peak to peak) •Voltage Range: 10V - 20V input •Max. Depth: 1600 ft. @ 77kHz (freshwater) •Cone Angle: 60° or 120° (dual beam) •Ultrascreen™ (displays fish targets at higher boat speeds) •Fish Symbol ID (helps identify fish targets) •AutoGain Technology (minimizes clutter, maximizes targets) •Whiteline (indicates hard or soft bottom) •Water temperature sensor •Audible alarms •Waterproof (IPX7) •Includes power cable, tilt/swivel quick-release mount, & documentation •Dimensions: 4.1" x 5.8" x 2.8" •Wt.: 9.5 oz. •NOTE: Portable Bundle includes suction cup transducer mount, portable bag, base/handle, foam float, rechargeable battery, & AC charger

Order #	Mfg. #	Sugg.Ret.	
5027608	010-01258-00	\$119.99	\$95.99
INCLUDES PORTABLE BUNDLE			
5027609	010-01258-10	179.99	143.99

ECHO™ 151DV

•Fishfinder w/Garmin DownVü™ scanning sonar & HD-ID™ tracking technology •4.0" diagonal 8-level grayscale FTSN display (160 x 256 pixels) •Dual-frequency (50/200 kHz) & Dual-beam (77/200 kHz) sonar capable •4-pin all-in-one transducer delivers both advanced HD-ID™ 77/200 kHz sonar & DownVü™ scanning sonar •Transmit Power: 200W (RMS)/1600W (peak to peak) •Voltage Range: 10V - 20V input •Max. Depth: 1600 ft. @ 77kHz (freshwater) •Ultrascreen™ (displays fish targets at higher boat speeds) •Fish Symbol ID (helps identify fish targets) •AutoGain Technology (minimizes clutter, maximizes targets) •Whiteline (indicates hard or soft bottom) •Water temperature sensor •Audible alarms •Waterproof (IPX7) •Includes power cable, tilt/swivel quick-release mount, & documentation •Dimensions: 4.1" x 5.8" x 2.8" •Wt.: 9.5 oz.

5027603	010-01253-00			\$135.99
Sugg.Ret. \$169.99				



ECHO™ 201

•Fishfinder w/HD-ID™ tracking technology & sonar history rewind •5.0" diagonal 16-level grayscale HVGA display (320 x 480 pixels) •Dual-frequency (50/200 kHz) & Dual-beam (77/200 kHz) sonar capable •Advanced HD-ID™ sonar technology •Transmit Power: 300W (RMS)/2400W (peak to peak) •Voltage Range: 10V - 28V input •Max. Depth: 1750 ft. @ 77kHz (freshwater) •Cone Angle: 60° or 120° (dual beam) •Split-screen zoom •Ultrascreen™ (displays fish targets at higher boat speeds) •Fish Symbol ID (helps identify fish targets) •AutoGain Technology (minimizes clutter, maximizes targets) •Whiteline (indicates hard or soft bottom) •Adjustable depth line (measures depth of underwater objects) •A-Scope (real time display of fish passing through transducer beam) •Bottom lock (shows return from the bottom up) •Water temperature log & graph •Water temperature sensor •Water speed capable (displays speed on water) •Audible alarms •Waterproof (IPX7) •Includes power cable, tilt/swivel quick-release mount, & documentation •Dimensions: 6.0" x 5.9" x 1.8" •Wt.: 17.6 oz.

Order #	Mfg. #	Description	Sugg.Ret.	
5027611	010-01259-01	No Transducer	\$159.99	\$127.99
5027610	010-01259-00	Dual-Beam Transducer w/Transom Mount & Trolling Motor Mount	179.99	143.99

ECHO™ 201DV

•Fishfinder w/Garmin DownVü™ scanning sonar & HD-ID™ tracking technology •5.0" diagonal 16-level grayscale FTSN display (320 x 480 pixels) •Dual-frequency (50/200 kHz) & Dual-beam (77/200 kHz) sonar capable •4-pin all-in-one transducer delivers both advanced HD-ID™ 77/200 kHz sonar & DownVü™ scanning sonar & includes transom & low-profile trolling motor mounting kits •Transmit Power: 300W (RMS)/2400W (peak to peak) •Voltage Range: 10V - 28V input •Max. Depth: 1750 ft. @ 77kHz (freshwater) •Split-screen zoom •Ultrascreen™ (displays fish targets at higher boat speeds) •Fish Symbol ID (helps identify fish targets) •AutoGain Technology (minimizes clutter, maximizes targets) •Whiteline (indicates hard or soft bottom) •Adjustable depth line (measures depth of underwater objects) •A-Scope (real time display of fish passing through transducer beam) •Bottom lock (shows return from the bottom up) •Water temperature sensor •Audible alarms •Waterproof (IPX7) •Includes power cable, tilt/swivel quick-release mount, & documentation •Dimensions: 6.0" x 5.9" x 1.8" •Wt.: 17.6 oz.

5027604	010-01254-00			\$183.99
Sugg.Ret. \$229.99				



EM SERIES - ENGINE MOUNT MK SERIES FRESHWATER

•Cool quiet power •Composite bracket will not interfere with normal performance of outboard or I/O motor •Mounts on cavitation plate of OB or I/O lower unit •No stowing/deploying required •Completely out-of-sight •Keeps deck clear and recreational boats from looking like fishing boats •Once on plane, EM rides completely out of water •Control speed with 18' corded remote that can be mounted or handheld •Offers infinitely variable speed control in forward or reverse •Features neutral (off) detent position •Motor can be steered using boat steering wheel or outboard tiller •Electronics are housed in fully waterproof control module mounted below deck •Electronics are sealed in marine-grade polyurethane for corrosion-proof protection •Extruded aluminum housing features specially designed fins that dissipate heat to keep things cool under high rpm use •Digital Maximizer™ delivers precise amount of power needed, extends battery life, reduces damaging heat, runs 5x longer on single charge •Weedless Wedge™ 2 prop •Sub-Model: MK101EM •Thrust: 101# •36 volts •Mount: Single-composite •FWD/REV: Variable •Boat Length: 22'

5202120 1370630
Sugg.Ret. \$949.99

\$821.14



DIGITAL LINEAR ON-BOARD CHARGER

•Microprocessor based charger provides a more precise, faster charge while protecting & extending battery life •Digitally controlled to monitor temperatures & state of charge to create a faster, regulated & more precise charge •Delivers up to 2x faster charge time in high heat conditions •Enhanced maintenance mode automatically shuts off 24 hours after the battery is fully charged •Charger monitors battery voltage & will automatically turn back on to maintain a full charge •Employs the proven performance of Minn Kota's Multi-Stage Charging (bulk, absorption, maintenance) & Automatic Temperature Compensation technologies •Enhanced status codes - users receive key information through a color-coded LED display •Features arc protection to prevent sparking when connecting to batteries •Waterproof, shock-and vibration-resistant aluminum construction •Saltwater tested & fully resistant to corrosion •Short circuit, reverse polarity, & ignition protected •For use with 12V/6-cell batteries that are flooded/wet cell, maintenance free, or starved electrolyte (AGM) only •FCC compliant •UL listed to 1236 standard •3-Year Warranty

Order #	Mfg. #	Model	Banks	Amps	Total Output	Sugg.Ret.
6033254	1821065	MK-106D	1	6	6	\$99.99
6033255	1821105	MK-110D	1	10	10	149.99
6033256	1822105	MK-210D	2	5	10	149.99
6033258	1822205	MK-220D	2	10	20	249.99
6033261	1822305	MK-230D	2	15	30	299.99
6033257	1823155	MK-315D	3	5	15	199.99
6033259	1823305	MK-330D	3	10	30	329.99
6033262	1823455	MK-345D	3	15	45	399.99
6033260	1824405	MK-440D	4	10	40	429.99
6033263	1824605	MK-460D	4	15	60	499.99

**NEW
FEATURE**



PRECISION ON-BOARD CHARGER

•Designed to create fast, safe charges •On each bank, select your battery type (AGM, gel or flooded lead acid) to guarantee a safe, protected charge •Use LED lights to monitor connection and power status, state of charge, & selected battery type •True-rated output •Low-line voltage compensation •AC plug holder keeps plugs dry, safe & easily accessible •Automatic temperature compensation •Battery equalization (for Flooded Lead Acid batteries only) •Automatic multi-stage charging controls the voltage & current the battery gets throughout the charging cycle •Waterproof, shock- and vibration-resistant •Saltwater-tested, fully corrosion-resistant •Short circuit, reverse polarity, arc & ignition protected •For use with 12-, 24-, 26- or 48-volt systems w 12V/6 cell batteries that are flooded Lead Acid, Maintenance Free, Starved Electrolyte (AGM/HP AGM) or Gel only •FCC compliant •CEC (California Energy Commission) compliant •Designed to UL marine standard 1236

Order #	Mfg. #	Model	Banks	Amps	Tot. Output	Sugg.Ret.
6033612	1831060	MK 106PC	1	6	6	\$119.99
6033613	1831100	MK 110PC	1	10	10	149.99
6033614	1832120	MK 212PC	2	6	12	199.99
6033615	1832200	MK 220PC	2	10	20	299.99
6033616	1833180	MK 318PC	3	6	18	269.99
6033617	1833300	MK 330PC	3	10	30	379.99
6033618	1834400	MK 440PC	4	10	40	479.99



ON-BOARD DC ALTERNATOR CHARGER

•Take charge of up to 30 amps of output •Features waterproof and corrosion-resistant design, a low profile enclosure and turns off when the engine is not in use

Order #	Mfg. #	Model	Banks	Sugg.Ret.
6032757	1821031	MK-1-DC	1	\$99.99
6032758	1821032	MK-2-DC	2	129.99
6032759	1821033	MK-3-DC	3	169.99



PRECISION ON-BOARD CHARGER

•Designed to create fast, safe charges •Precision Chargers take it to a whole new level, adding features like Battery Equalization, Low-Line Voltage Compensation and True-Rated Output to create a fast, protected charge on the water •A comprehensive LED display lets you select your battery type by bank, and monitor each bank's connection status, power status, state of charge & selected battery type •Half the weight and more compact than traditional chargers •A microprocessor-based design enables the charger to continually monitor the temperature and state of charge •It means a faster, more regulated, precise charge for your battery •Waterproof, shock- and vibration-resistant aluminum construction •Saltwater-tested, fully corrosion-resistant construction •Short circuit, reverse polarity, arc and ignition protected •For use with 12-, 24-, 36- or 48-volt systems with 12V/6 cell batteries that are Flooded Lead Acid, Maintenance Free, Starved Electrolyte (AGM/HP AGM) or Gel only (60-180 amp hour rating) •FCC Compliant •Designed to UL 1236 marine standard

Order #	Mfg. #	Model	Banks	Amps	Tot. Output	Sugg.Ret.
6033536	1821151	MK-115PC	1	15	15	\$249.99
6033537	1822301	MK-230PC	2	15	30	349.99
6033538	1823451	MK-345PC	3	15	45	449.99
6033539	1824601	MK-460PC	4	15	60	549.99



PORTABLE CHARGER

•Designed to restore proper charge to trolling batteries faster without over- or undercharging •3-stage charging (bulk, absorption & maintenance) •LED display indicates power ON, charging, full charge & check connection •Low-line voltage compensation delivers true-rated output even when input voltage drops •Waterproof, shock- & vibration-resistant •Short circuit & reverse polarity protection prevents charger from operating if improperly connected to battery •For use with 12V/6-cell batteries (50-130 amp hour rating that are flooded/wet cell, maintenance-free or starved electrolyte only) •FCC compliant. UL listed to marine standard 1236 •Full 3-year warranty

Order #	Mfg. #	Model	Total Output	Sugg.Ret.
6032668	1821051	MK105P	5	\$59.99
6031909	1820110	MK110P	10	84.99
6032669	1822110	MK210P	10	109.99



FORTREX - BOW MOUNT

•Innovative Mono Arm design •Single hinge point has fewer moving parts than traditional scissors mount and has a rear pivot bearing that is 20x larger •Counter-Tension Stability (CTS) design features an integrated spring arm that applies force in both the stowed & deployed positions •Marine-grade anodized extruded aluminum structural beam design •All metal interfaces are isolated w/composite bushings •Side plates have replaceable nylon motor rest inserts •7/16" diameter pivot pin •Extruded marine-grade aluminum bow plate •Removeable Bow Guard 360" •Incorporates enhanced patented Lift-Assist design •Control box is a hybrid composite material improving impact resistance •Lighted directional indicator •Non-marring soft grip rope handle w/improved abrasion resistance •Integrated* bow mount stabilizer comes standard on all Fortrex except 80 lb. 45" models •Hand Control model utilizes the Tilt/Extend Tiller, which tilts (up to 45°) & extends (up to 6") to give you maximum control

Order #	Mfg. #	Sub-Model	Column	Thrust	Volts	Mount	FWD/REV	Boat Length	Sugg.Ret.	
5204422	1368660	Fortrex 80	45"	80#	24	Bowguard 360°™	Variable	25'	\$1,199.99	\$987.71
5204423	1368661	Fortrex 80	52"	80#	24	Bowguard 360°™	Variable	25'	1,229.99	1022.20
5205015	1368687	Fortrex 112	45"	112#	36	Bowguard 360°™	Variable	25'	1,349.99	1111.18
5205016	1368688	Fortrex 112	52"	112#	36	Bowguard 360°™	Variable	25'	1,379.99	1145.67
w/UNIVERSAL SONAR 2*										
5204425	1368670	Fortrex 80/US2	45"	80#	24	Bowguard 360°™	Variable	25'	1,299.99	1070.02
5204426	1368671	Fortrex 80/US2	52"	80#	24	Bowguard 360°™	Variable	25'	1,329.99	1104.51
5204427	1368672	Fortrex 80/US2	62"	80#	24	Bowguard 360°™	Variable	25'	1,359.99	1138.99
5205017	1368695	Fortrex 112/US2	45"	112#	36	Bowguard 360°™	Variable	25'	1,449.99	1193.49
5205018	1368696	Fortrex 112/US2	52"	112#	36	Bowguard 360°™	Variable	25'	1,479.99	1227.98
5205019	1368697	Fortrex 112/US2	62"	112#	36	Bowguard 360°™	Variable	25'	1,509.99	1262.46
HAND CONTROL										
5205020	1368686	Fortrex 112 Hand	52"	112#	36	Bowguard 360°™	Variable	25'	1,199.99	987.71

*Universal Sonar Units Require Purchase of US2 Adaptor Cables



MAXXUM® - BOW MOUNT

•Cool quiet power •Indestructible composite shaft •Digital Maximizer™ controls draw of power at infinitely variable speeds, eliminates wasted energy, conserves battery power •Weedless Wedge™ 2 prop •Cable steer control •Lighted directional indicator •Cable steer foot pedal, ergonomically designed for all-day comfort, heel/toe action, easy-to-use, provides complete control •NOTE: Hand Control Models: Ergonomic contoured tiller handle design incorporates both tilt and extension functions •45° upward tilt •Downward tilt feature for compact storage •Handle extends 6"

Order #	Mfg. #	Sub-Model	Column	Thrust	Volts	Mount	FWD/REV	Boat Length	Sugg.Ret.	
w/FOOT CONTROL										
5201960	1368550	Max 55/SC	42"	55#	12	Bowguard 360°™	5	21'	\$699.99	\$553.41
5201961	1368551	Max 55/SC	52"	55#	12	Bowguard 360°™	5	21'	709.99	577.67
5201962	1368553	Max 55	42"	55#	12	Bowguard 360°™	Variable	21'	799.99	646.94
5201963	1368554	Max 55	52"	55#	12	Bowguard 360°™	Variable	21'	809.99	680.46
5201909	1368560	Max 70/SC	42"	70#	24	Bowguard 360°™	5	23'	729.99	581.99
5201906	1368561	Max 70	42"	70#	24	Bowguard 360°™	Variable	23'	829.99	671.27
5201907	1368562	Max 70	52"	70#	24	Bowguard 360°™	Variable	23'	839.99	704.72
5201912	1368580	Max 80	42"	80#	24	Bowguard 360°™	Variable	25'	1,049.99	824.47
5201913	1368581	Max 80	52"	80#	24	Bowguard 360°™	Variable	25'	1,079.99	882.65
w/HAND CONTROL										
5204434	1368620	Max 55 SC/Hand	52"	55	12	Bowguard 360°™	5/3	21'	549.99	444.76
5204435	1368630	Max 70 SC/Hand	52"	70#	24	Bowguard 360°™	5/3	23'	729.99	590.60
5204436	1368640	Max 80 BG/Hand	52"	80#	24	Bowguard 360°™	Variable	25'	929.99	752.15

*Universal Sonar Units Require Purchase of US2 Adaptor Cables



SIMPLY. CLEARLY. BETTER.



5025967



5026864



5027140



5027142



5027139



5025973



5025968



5026280



5026283



5026862



5027143

FISHFINDER 345C PT

•320Vx240H, 3.5" color LCD •Temp included •Speed capable •DualBeam 83 kHz/60° & 200 kHz/20° •300 watts RMS •2400 watts peak-to-peak •Soft sided case •Suction cup transducer replaces transom transducer •Integral tackle box storage •Gel-cell battery & charger included
5025967 407700-1
Sugg.Ret. \$329.99

\$278.99

FISHFINDER 561

•Features Dual Beam PLUS w/Switchfire™ Sonar that has selectable 20° & 60° beams •The wide beam spots fish over wider areas & the narrow beam provides better bottom definition •5" display (12-level grayscale) •Pixel Matrix: 320Vx320H •Sonar Frequency: 200/83kHz •Sonar Coverage: 20°/60° @ -10db •Depth Capability: 800 ft. •Power Output: 2000 Watts (Peak-to-Peak)
5026864 408460-1
Sugg.Ret. \$149.99

\$126.09

571 HD DI

•High Definition 640Vx320H, 16 level grayscale 5" display •Down Imaging® and exclusive SwitchFire™ Sonar •Down Imaging®: 455kHz/75° @-10db; 800kHz/45° @-10db •DualBeam PLUS™ w/SwitchFire™: 200kHz/28° @-10db; 455kHz/16° @-10db •Temp. Depth 250' (DI), 600' •4000 watts peak-to-peak, 500 watts RMS •Quick disconnect
•408960-1: 571 HD DI - Clamshell packaging
•408970-1: 571 HD DI PT - Includes soft side portable case, battery, charger & suction cup transducer
Order # Mfg. # Model Sugg.Ret.
5027140 408960-1 571 HD DI \$249.99
5027141 408970-1 571 HD DI PT 299.99

**\$223.09
271.59**

581I HD DI COMBO

•High Definition 640Vx320H, 16 level grayscale 5" display •Down Imaging® and exclusive SwitchFire™ Sonar •Down Imaging®: 455kHz/75° @-10db; 800kHz/45° @-10db •DualBeam PLUS™ w/SwitchFire™: 200kHz/28° @-10db; 455kHz/16° @-10db •Internal precision GPS w/built-in UniMap™ •Single SD card slot •Temp. GPS Speed •Depth 250' (DI), 600' •2400 watts peak-to-peak, 300 watts RMS •Quick disconnect mount •Clamshell packaging
5027142 408990-1
Sugg.Ret. \$299.99

\$271.59

561 DI

•320Vx320H, 12 level grayscale 5" display •Down Imaging® and exclusive SwitchFire™ Sonar •Down Imaging®: 455kHz/75° @-10db; 800kHz/45° @-10db •DualBeam PLUS™ w/SwitchFire™: 200kHz/28° @-10db; 455kHz/16° @-10db •Depth 250' (DI), 600' •4000 watts peak-to-peak, 500 watts RMS •Quick disconnect mount •Clamshell packaging
5027139 408980-1
Sugg.Ret. \$199.99

\$179.34

FISHFINDER 581I COMBO

640Vx320H, 5" monochrome FSTN LCD. 16 level grayscale. Front mounted internal GPS allows in-dash mounting. Temp included. GPS speed included. Dual beam 83 kHz/60° & 200 kHz/20°. 250 watts RMS. 2000 watts peak-to-peak. 50 channel GPS w/UniMap® built-in. Single front side SD card slot. Navionics® compatible.
5025973 407330-1
Sugg.Ret. \$349.99

\$290.99

385CI PT COMBO

320Vx240H, 3.5" color LCD. Temp included. GPS speed included. DualBeam 83 kHz/60° & 200 kHz/20°. 300 watts RMS. 2400 watts peak-to-peak. 50 channel GPS UniMap built-in. Housing designed w/SD card slot. Navionics® compatible. Soft sided case. Suction cup transducer replaces transom transducer. Integral tackle box storage. Gel-cell battery & charger included.
5025968 407710-1
Sugg.Ret. \$449.99

\$369.03

597CI HD DI COMBO

5" diagonal Color TFT display. Backlit screen. Display Pixel Matrix: 640Vx640H. 256 Color. Quick disconnect mount. Temp included. GPS speed included. Built-in 50 Channel GPS Humminbird® Unimap™. Down Imaging™ Single Beam Sonar w/SwitchFire™. Sonar Freq.: 455/800/200 kHz. Sonar Coverage: 20°, 55°, 86° @ -10db. Depth Capability: 250ft. DI & 1000ft. Waterproof. Power Output (max.): 500 Watts (RMS) 4000 Watts peak-to-peak. 2-1/2" Target separation. Includes SD memory slot (card not included).
5026280 408120-1
Sugg.Ret. \$599.99

\$504.39

570 DI PORTABLE

5" diagonal FSTN LCD display. Backlit screen. Display Pixel Matrix: 640Vx320H. 16 level grayscale. Quick disconnect mount. Temp included. Speed capable. Down Imaging™ Single Beam Sonar w/SwitchFire™. Sonar Freq.: 455/800/200 kHz. Sonar Coverage: 20°, 55°, 86° @ -10db. Depth Capability: 250ft. DI & 1000ft. Waterproof. Power Output (max.): 300 Watts (RMS) 2400 Watts peak-to-peak. 2-1/2" Target separation. Includes rugged carry case, single SD memory slot (card not included), suction cup transducer & 7Ah battery w/charger.
5026283 408140-1
Sugg.Ret. \$349.99

\$301.01

FISHFINDER 345C DI

Features Down Imaging™ (DI) & Dual Beam PLUS w/SwitchFire™ Sonar. 3.5" Diagonal 256-color TFT display w/backlighting. Pixel Matrix: 320Vx240H. Temperature included. Speed capable. Waterproof. Sonar Frequency: DI - 455/800kHz; Dual Beam - 200/455kHz. Sonar Coverage: DI - 75°/45° @ -10db; Dual Beam - 25°/16° @ -10db. Target separation: 2.5". Depth Capability: 250 ft. DI & 1000 ft. Power Output: 500 Watts (RMS); 4000 Watts (Peak-to-Peak). Current Draw: 380 mA. Quick disconnect mount (optional in-dash).
5026862 408440-1
Sugg.Ret. \$379.99

\$271.59

598CI HD SI COMBO (SIDE IMAGING)

High Definition 640Vx640H, 256 color, 5" display. Side Imaging™/Down Imaging® and exclusive SwitchFire™ Sonar. Side Imaging™/Down Imaging® (180° total coverage): 455kHz/(2) 86° @-10db; 800kHz/(2) 55° @-10db. DualBeam PLUS™ w/SwitchFire™: 200kHz/20° @-10db; 83kHz/60° @-10db. Internal precision GPS w/built-in UniMap™. Single SD card slot. Temp. GPS Speed. Depth 100' (SI/DI), 1500'. 4000 watts peak-to-peak, 500 watts RMS. Quick disconnect mount.
5027143 408950-1
Sugg.Ret. \$799.99

\$678.99



SIMPLY. CLEARLY. BETTER.



398CI SI COMBO

•320Vx240H, 3.5" display w/LED backlight •Side Imaging® & Down Imaging® sonar w/4000 watts PTP power output •Precision internal GPS chartplotting w/built-in UniMap™ cartography with a card slot for optional maps and saving waypoints •Tilt & Swivel Quick Disconnect mounting system
5027349 409380-1
 Sugg.Ret. \$499.99

\$453.40



600 SERIES

•678c HD: 2D Sonar; Color 5" 640x480, Fishfinder, DualBeam, Temp
 •678c HD DI: 2D/DI Sonar; Color 5" 640x480, Fishfinder, Down Imaging, Temp
 •678c HD XD: XD Sonar; Color 5" 640x480, Fishfinder, DualBeam(200/50kHz), Temp
 •688ci HD Combo: 2D GPS Combo; Color 5" 640x480, Internal GPS, DualBeam, Temp/GPS Speed
 •688ci HD DI Combo: 2D/DI GPS Combo; Color 5" 640x480, Internal GPS, Down Imaging, Temp/GPS Speed
 •688ci HD XD Combo: XD GPS Combo; Color 5" 640x480, Internal GPS, DualBeam(200/50kHz), Temp/GPS Speed
 •698ci HD SI Combo: 2D/DI/SI GPS Combo; Color 5" 640x480, Internal GPS, Side Imaging, Temp/GPS Speed
 •698ci HD SI KVD Combo: 2D/DI/SI GPS Combo; Color 5" 640x480, Internal GPS, Side Imaging, Temp/GPS Speed, KVD Edition

Order #	Mfg. #	Model	Sugg.Ret.	
5027430	409410-1	678c HD	\$349.99	\$301.01
5027431	409430-1	678c HD DI	399.99	344.02
5027432	409420-1	678c HD XD	399.99	344.02
5027433	409440-1	688ci HD Combo	499.99	387.99
5027434	409460-1	688ci HD DI Combo	599.99	431.64
5027435	409450-1	688ci HD XD Combo	599.99	431.64
5027436	409470-1	698ci HD SI Combo	799.99	608.04
5027549	409470-1KVD	698ci HD SI KVD Combo	699.99	620.18



386CI DI COMBO

•320Vx240H, 256 color, 3.5" display •Down Imaging® and exclusive SwitchFire™ Sonar •Internal GPS & built-in UniMap™ •Single SD card slot lets you upgrade to LakeMaster™ or Navionics® cartography •Down Imaging™: 455kHz/75° @-10db; 800kHz/45° @-10db •DualBeam PLUS™ w/SwitchFire™: 200kHz/29° @-10db; 455kHz/16° @-10db •Temp. GPS Speed •Depth 250' (DI), 600' •4000 watts peak-to-peak, 500 watts RMS •Quick disconnect mount
5027137 409050-1
 Sugg.Ret. \$399.99

\$362.72



386CI COMBO

•320Vx240H, 256 color, 3.5" display •Internal GPS & built-in UniMap™ •Single SD card slot lets you upgrade to LakeMaster™ or Navionics® cartography •DualBeam PLUS™ w/SwitchFire™: 200kHz/20° @-10db; 83kHz/60° @-10db •Temp. GPS speed •Depth 1500' •4000 watts peak-to-peak, 500 watts RMS •Quick disconnect mount
5027136 409030-1
 Sugg.Ret. \$299.99

\$272.03



386CI COMBO PT

•320Vx240H, 256 color, 3.5" display •Internal GPS & built-in UniMap™ •Single SD card slot lets you upgrade to LakeMaster™ or Navionics® cartography •DualBeam PLUS™ w/SwitchFire™: 200kHz/20° @-10db; 83kHz/60° @-10db •Temp. GPS Speed •Depth 1500' •4000 watts peak-to-peak, 500 watts RMS •Includes soft side portable case, battery, charger & suction cup transducer •Quick disconnect mount
5027138 409040-1
 Sugg.Ret. \$449.99

\$408.06

LOWRANCE®

Seize the Day



**HDS-12 GEN2 TOUCH
FISHFINDER/CHARTPLOTTER**

•Lowrance's largest, high definition 12" widescreen color display w/touchscreen functionality for fast & easy operation •Brilliant, enhanced SolarMAX™ PLUS display for superior sunlight & wider angle viewing
•Built-in, exclusive Insight USA™ mapping, Broadband Sounder & StructureScan HD Sounder •Dual Ethernet ports & full size SD card slots, and video-camera input

Order #	Mfg. #	Description	Sugg.Ret.
5027186	000-10775-001	HDS-12 Gen2 Touch w/Insight USA™, no transducer	\$3,279.99
5027187	000-10776-001	HDS-12 Gen2 Touch w/Insight USA™ 83/200 kHz	3,299.99
5027188	000-10777-001	HDS-12 Gen2 Touch w/Insight USA™ 50/200 kHz	3,369.99
5027494	000-11281-001	HDS-12 Gen2 Touch w/Insight USA™ 83/200 kHz & LSS-2 System	3,499.99

POR



HDS-10 GEN 2 FISHFINDER/CHARTPLOTTER

•High-definition 10.4" super VGA color viewing •Brilliant, enhanced SolarMAX™ PLUS display for superior sunlight and wider-angle viewing •Pure-white LED screen/keypad backlighting fully adjusts to zero-dim for night viewing •Programmable and soft keys controls •Built-in, exclusive Insight USA™ mapping or Enhanced US basemap model choices

Order #	Mfg. #	Description	Sugg.Ret.
5026955	000-10543-001	HDS-10 Gen 2, no transducer, Insight™ USA coverage combines Lake & Nautic maps	\$2,279.99
5026954	000-10542-001	HDS-10 Gen 2, 83/200kHz transducer, Insight™ USA coverage combines Lake & Nautic maps	2,299.99
5026953	000-10541-001	HDS-10 Gen 2, 50/200kHz transducer, Insight™ USA coverage combines Lake & Nautic maps	2,369.99
5026957	000-10625-001	HDS-10 Gen 2, US basemap, 83/200kHz transducer.	2,299.99

POR

LOWRANCE®

Seize the Day

HDS-7 GEN2 TOUCH FISHFINDER/CHARTPLOTTER

- High definition 7" widescreen color display w/touchscreen functionality for fast & easy operation
- Brilliant, enhanced SolarMAX™ PLUS display for superior sunlight & wider angle viewing
- Single Ethernet port & full size SD card slot
- 000-10761-001: HDS-7M Gen2 Touch w/Insight USA™
- 000-10764-001: HDS-7 Gen2 Touch w/Insight USA™, no transducer
- 000-10765-001: HDS-7 Gen2 Touch w/Insight USA™ 83/200 kHz
- 000-10766-001: HDS-7 Gen2 Touch w/Insight USA™ 50/200 kHz
- 000-10778-001: HDS-7 Gen2 Touch w/Insight USA™ 83/200 kHz & SS transducer

Order #	Mfg. #	Sugg.Ret.
5027179	000-10764-001	\$1,449.99
5027180	000-10765-001	1,499.99
5027181	000-10766-001	1,549.99
5027189	000-10778-001	1,699.99
CHARTPLOTTER ONLY		
5027178	000-10761-001	1,299.99

POR



HDS-7 GEN 2 FISHFINDER/GPS CHARTPLOTTER

- Brilliant SolarMAX™ PLUS display for excellent viewing in bright sunlight
- Pure-white LED screen/ keypad backlighting fully adjusts to zero-dim for night viewing
- Built-in, exclusive Insight USA™ mapping or Enhanced US basemap model choices
- 000-10531-001: HDS-7 Gen 2, no transducer, Insight™ USA coverage combines Lake & Nautic maps
- 000-10530-001: HDS-7 Gen 2, 83/200kHz transducer, Insight™ USA coverage combines Lake & Nautic maps
- 000-10529-001: HDS-7, 50/200kHz transducer, Insight™ USA coverage combines Lake & Nautic maps
- 000-10869-001: HDS-7 Gen 2 Insight™ USA 83/200 kHz w/LSS-2 System

Order #	Mfg. #	Sugg.Ret.
5026947	000-10531-001	\$849.99
5026946	000-10530-001	899.99
5026945	000-10529-001	949.99
5027011	000-10869-001	1,299.99
5026948	000-10532-001	999.99

POR



HDS-8 GEN 2 FISHFINDER/CHARTPLOTTER

- High-definition 8.4" super VGA color viewing
- Brilliant, enhanced SolarMAX™ PLUS display for superior sunlight and wider-angle viewing
- Pure-white LED screen/keypad backlighting fully adjusts to zero-dim for night viewing
- Programmable and soft keys controls
- Built-in, exclusive Insight USA™ mapping or Enhanced US basemap model choices
- 000-10538-001: HDS-8 Gen 2, no transducer, Insight™ USA coverage combines Lake & Nautic maps
- 000-10537-001: HDS-8 Gen 2, 83/200kHz transducer, Insight™ USA coverage combines Lake & Nautic maps
- 000-10536-001: HDS-8 Gen 2, 50/200kHz transducer, Insight™ USA coverage combines Lake & Nautic maps
- 000-10870-001: HDS-8 Gen 2 Insight™ USA w/LSS-2 System

Order #	Mfg. #	Sugg.Ret.
5026952	000-10538-001	\$1,249.99
5026951	000-10537-001	1,299.99
5026950	000-10536-001	1,349.99
5027012	000-10870-001	1,699.99

POR





LIFT 'N' LOCK

ANCHOR CONTROLS

- Economical steel/zinc plate anchor lift & nylon pulley system
- Steel sheave controls anchor from any position
- Supports anchor up to 20 lbs. with 1/4" to 7/16" diameter line

6100442 13700-7
Sugg.Ret. \$9.99



\$4.49



PRIMER BULBS

Order #	Mfg. #	Barb Size	Sugg.Ret.
5903785	93014LP7	1/4" ID	\$19.99
5903759	93038LP7	3/8"	27.99
5903760	93516LP7	5/16"	27.99

\$11.66
12.48
12.48

TSUNAMI

BILGE PUMPS

- Compact, low-profile design
- Glass- & mineral-filled polymer body
- Corrosion-resistant, tinned & caulked wiring eliminates wicking & water damage
- High efficiency, permanent magnet motor with composite brushes & lubricated bearings
- 316 SS shaft
- Easy cartridge installation
- Free-flowing water around motor housing keeps motor cool, extends life
- Double filter base resists clogging
- Anti-air lock valve
- High-impact, glass-filled polyester impeller
- Motor cartridges of same GPH capacity can be removed from bilge pump & inserted into aerator pump or vice-versa
- Patented steel-reinforced motor shaft seal
- 3-year warranty



	T500	T800	T1200
GPH Open Flow	500	800	1200
GPH 3.3' Head	400	700	900
GPH 6.7' Head	230	540	700
Max Head	8'	14'	11'
Outlet Style	Barbed	Barbed	Barbed
I.D Diameter	3/4"	3/4"	1-1/8"
Amp Draw	1.3	2.4	2.7
Fuse Size	3	4	5
Volt	12v	12v	12v
Height	3-1/8"	3-1/2"	3-3/4"

Order #	Mfg. #	Model	Sugg.Ret.
6031919	4606-7	T500	\$29.99
6031920	4608-7	T800	44.99
6031921	4612-7	T1200	59.99

\$13.30
19.55
26.62

SAHARA AUTOMATIC

BILGE PUMPS

- Permanent-magnet motor
- Stainless steel shaft
- Steel-reinforced seal
- 36" tinned-copper, 16-ga. wire, caulked to prevent water from wicking through insulation jacket
- Mercury-free, compact design
- Environmentally friendly
- 3-year warranty



	S500	S750	S1100
GPH Open Flow	500	750	1100
GPH 3.3' Head	350	625	973
GPH 6.7' Head	200	450	750
Max Head	9'	16'	11'
Hose Size-I.D.	3/4"	3/4"	1-1/8"
Amp Draw	1.5	2.8	4
Fuse Size	3	5	6
Volt	12v	12v	12v
Height	4"	4"	4"

Order #	Mfg. #	Model	Sugg.Ret.
6031726	4505-7	S500	\$73.99
6031727	4507-7	S750	118.99
6031728	4511-7	S1100	112.99

\$32.14
53.85
63.23

TSUNAMI CARTRIDGE

MOTOR REPLACEMENT

- Dependable, long-lasting
- Boaters can remove cartridge & insert another
- Interchangeable: between bilge & aerator pumps with same GPH capacity
- Twist-&-lock design allows quick, easy removal/replacement
- Compact, easy-to-grasp, ideal for maneuvering in tight spaces
- Each GPH model is color-coded

Order #	Mfg. #	For	Color-Code	Sugg.Ret.
6031922	4620-6	T-500	Red	\$25.99
6033031	4622-6	T-800	Blue	31.99
6033032	4624-6	T-1200	Black	46.99

\$10.87
15.88
21.62



TSUNAMI AERATOR PUMPS

- Glass- & mineral-filled polymer inlet & body withstands stresses associated with hull pounding, resists deteriorating effects of caulks
- Anti-air lock vanes allow pump to regain prime quickly when air lock occurs
- Water-cooled housing reduces heat buildup, extending motor life
- Corrosion-resistant, tinned & caulked wiring eliminates wicking & water damage
- Threaded outlet style with sizes to accommodate standard filter screens
- Depress Tab & Twist motor cartridge
- 12V
- 36" wire

Order #	Mfg. #	Type	ID	Sugg.Ret.
6031925	4640-7	T500	3/4"	\$48.99
6031926	4650-7	T800	3/4"	74.99
6031927	4660-7	T1200	1-1/8"	73.99
W/SEACOCK MOUNT				
6033001	4653-7	T800	3/4"	45.99
6033002	4663-7	T1200	1-1/8"	56.99

\$18.62
23.11
25.95

22.32
27.26



TSUNAMI® DUAL-OUTLET

AERATOR PUMPS

- Feed multiple applications through a single thru-hull fitting
- The thru-hull can be straight thru-transom, remote or seacock mounted
- Feed two livewells or use the second outlet for a low pressure rinse hose
- Or use one outlet to aerate, and route the other outlet to a positive displacement pump, using it as an intake for a high pressure washdown application
- Water-cooled motor inside a tough housing made of engineered alloy resin
- Patented SS reinforced motor shaft seal that ensures perfect alignment and sealing
- Outlets: 3/4" NPSM (garden hose), 3/4" I.D. barbed
- Inlet: 3/4"-14 NPT

Order #	Mfg. #	Inlet Length	Inlet Dia.	Sugg.Ret.
6032425	4670-7	3/4"	3/4"	\$52.99
6032426	4672-7	3-1/2"	3-1/2"	53.99

\$24.77
25.27



SAHARA AUTOMATIC

BILGE PUMPS

- Permanent-magnet motor
- Stainless steel shaft
- Steel-reinforced seal
- 36" tinned-copper, 16-ga. wire, caulked to prevent water from wicking through insulation jacket
- Mercury-free, compact design
- Environmentally friendly
- 3-year warranty



TRANSOM SAVERS

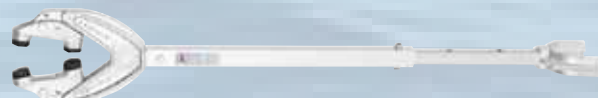
- Support the cantilevered weight of the motor
- Stabilize engine & steering mechanism when trailering
- Tough, adjustable toggles w/replaceable rubber pads
- Shock absorbing spring-loaded transom saver, is designed to reduce damaging effects of road shock
- Works for motors with hydraulic trim/tilt

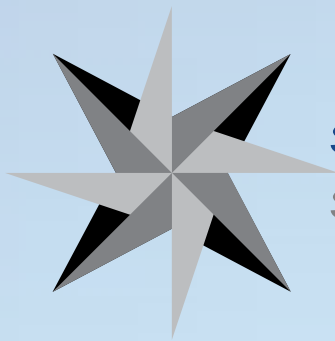
Order #	Mfg. #	Mount	Length	Sugg.Ret.
ADJUSTABLE HEAVY-DUTY w/HEAVY-DUTY HEAD				
6202014	4000-ADJ	Roller	24"-36"	\$60.99
6217652	SP-4000-ADJ-RB	Roller/Bolt	24"-36"	67.99
6217654	SP-422-ADJ-RB	Roller/Bolt	28"-40"	86.99
6206820	424-ADJ	Roller	32"-44"	78.99
6217655	SP-424-ADJ-RB	Roller/Bolt	32"-44"	85.99
6207275	436-ADJ	Roller	44"-56"	82.99
6217656	SP-436-ADJ-RB	Roller/Bolt	44"-56"	91.99
ADJUSTABLE w/COMPOSITE HEAD				
6217653	SP-400-RB	Roller/Bolt	23"-35"	62.99
ADJUSTABLE SHOCK ABSORBING w/HEAVY-DUTY HEAD				
6217659	SP-421-RB	Roller/Bolt	27"-36"	85.99
6207274	SP-429-RB	Roller/Bolt	31"-40"	88.99

\$31.20
33.64
42.62
35.13
38.26
37.75
41.09

26.53

43.91
50.92





SEASTAR
SOLUTIONS®

 **xtreme**



XTREME™ MECHANICAL STEERING SYSTEM

•System is designed to deliver the most efficient mechanical steering possible •Least effort, least lost motion, smooth release of NFB clutch with the best holding power •30% reduction in steering wheel effort compared to the 4.2 Helm •Quick connect feature on both cable & spent travel tube side •Normal steering cable installation side marked on casting •No tools required to snap steering cable or spent travel tube in place •Easy system installation, single steering cable to route with standard 8" bend radius for the cable •No bleeding of hydraulic system or electrical wiring required •Fits standard SeaStar Solutions® dash cut out with standard Safe-T and 4.2 bracket •Gear train is custom designed by SeaStar Solutions® to allow the smallest foot print with the lowest effort available in a mechanical Helm •Helm has smaller footprint than the current 4.2 Helm •Also has an improved NFB clutch "feel" to allow smoother clutch release •"XTREME" Steering Cable designed for this helm •Cable offers lower backlash & is more efficient than a standard steering cable •Helm is part of a system and must use the XTREME SSCX64 Steering Cable •New bezel design for standard Helm •Label w/designation of clutch next to steering cable connection to identify the style of helm •Outer helm casting is a zinc alloy with new design for the clutch mechanism •All castings are designed to reduce weight while offering superior strength

Order #	Mfg. #	Length	Sugg.Ret.
---------	--------	--------	-----------

STANDARD SYSTEM NFB

XTREME™ NFB HELM, BEZEL, HARDWARE KIT & XTREME™ QC STEERING CABLE

6307927	SSX17611	11'	\$346.99	\$216.99
6307928	SSX17612	12'	346.99	216.99
6307929	SSX17613	13'	346.99	216.99
6307930	SSX17614	14'	346.99	216.99
6307931	SSX17615	15'	346.99	216.99
6307932	SSX17616	16'	346.99	216.99
6307933	SSX17617	17'	346.99	216.99
6307934	SSX17618	18'	346.99	216.99
6307935	SSX17619	19'	346.99	216.99
6307936	SSX17620	20'	346.99	216.99
6307937	SSX17621	21'	346.99	216.99
6307938	SSX17622	22'	346.99	216.99
6307939	SSX17623	23'	346.99	216.99
6307940	SSX17624	24'	346.99	216.99
6307941	SSX17625	25'	346.99	216.99

TILT SYSTEM NFB

XTREME™ TILT NFB HELM, BEZEL, HARDWARE KIT & XTREME™ QC STEERING CABLE

6307942	SSX17711	11'	460.99	288.50
6307943	SSX17712	12'	460.99	288.50
6307944	SSX17713	13'	460.99	288.50
6307945	SSX17714	14'	460.99	288.50
6307946	SSX17715	15'	460.99	288.50
6307947	SSX17716	16'	460.99	288.50
6307948	SSX17717	17'	460.99	288.50
6307949	SSX17718	18'	460.99	288.50
6307950	SSX17719	19'	460.99	288.50
6307951	SSX17720	20'	460.99	288.50
6307952	SSX17721	21'	460.99	288.50
6307953	SSX17722	22'	460.99	288.50
6307954	SSX17723	23'	460.99	288.50
6307955	SSX17724	24'	460.99	288.50
6307956	SSX17725	25'	460.99	288.50

 **DETWILER**



D1000 SERIES JACK PLATE

BY SEASTAR® SOLUTIONS

•Interlocking slide guides offer enhanced strength while providing smooth, bind-free travel •Lead screw assembly sets the plate height & the side locks are used to hold the position •Stainless steel lead screw is resistant to corrosion & pre-greased for smooth operation •Maximum supported engine weight of 585 lbs is capable of handling the most demanding outboard engines including the latest generation of 4-strokes

Order #	Mfg. #	Setback	Sugg.Ret.
6218689	JP1040	4"	\$347.99
6218690	JP1060	6"	422.99
6218691	JP1080	8"	437.99

\$250.42
303.94
315.01



D2000 SERIES

EZ-ADJUST JACK PLATE

BY SEASTAR® SOLUTIONS

•Adjustable on the water so there is no need to hoist the engine to make a change •Simple lead screw & nut assembly allows for quick and easy height adjustment •Position is held with a single locking nut •Stainless steel lead screw is corrosion-resistant & pre-greased for smooth operation •Integrated grease fittings allow for easy maintenance & long life •Heavy-duty slide mechanism w/internal bearings allows for smooth travel & a strong resistance to binding •Maximum supported engine weight of 585 lbs is capable of handling the most demanding outboard engines including the latest generation of 4-stroke engines

Order #	Mfg. #	Setback	Sugg.Ret.
6218693	JP2060	6"	\$501.99
6218694	JP2080	8"	517.99

\$361.16
372.24

D3000 SERIES

HYDRAULIC JACK PLATE

BY SEASTAR® SOLUTIONS

BY SEASTAR® SOLUTIONS

•Maximum supported engine weight of 625 lbs is capable of handling the most demanding outboard engines including the latest generation of 4-strokes •Fully integrated hydraulic actuator, with self-purging reservoir, provides smooth powered height adjustment •With the actuator unit integrated into the plate, there is no need to sacrifice boat space for a pump or hydraulic lines •Optimized lift speed provides precise positioning that will not overshoot •Heavy-duty slide mechanism w/internal bearings provides smooth, bind-free travel with a strong resistance to torque lock •Fully captured slide mechanism prevents over-extension of the plate •Integrated grease fittings allow for easy maintenance & long life •Stainless steel guide rods w/wipers are corrosion-resistant & self-cleaning for low maintenance & high reliability •Up to 6" of stroke depending on control method

Order #	Mfg. #	Setback	Sugg.Ret.
6218696	JP3040R	4"	\$1,159.99
6218697	JP3060R	6"	1,159.99
6218698	JP3080R	8"	1,298.99

PRO TRIM CONTROL

6218699	JP3060T	6"	1,315.99
6218700	JP3080T	8"	1,454.99

EX-ZACT DIAL CONTROL

6218701	JP3060X	6"	1,410.99
6218702	JP3080X	8"	1,566.99

\$813.92
813.92
911.44

923.33
1020.85

989.92
1099.33





**PRV250
AM/FM/BLUETOOTH®
MULTIMEDIA RECEIVER**

•Bluetooth® audio streaming •4x50 watts •Solid aluminum chassis
•Aux-in •Portable-media ready •USB input •ASTM 117 salt fog
•1 pair of RCA outputs •IP66 waterproof face •Comes w/flush-
face mounting kit •Charging through USB port •RF remote/wire
remote ready (remotes sold separately) •Size: 6"Lx4"Wx2-1/2"D
5103443 INF-PRV250
Sugg.Ret. \$229.99

\$129.48



MR145S AM/FM/CD RECEIVER

•AM/FM/CD receiver features front aux. input allowing MP3 por-
table media to be plugged into watertight plug •4x45 Watts •Fea-
tures: ESP, electronic volume control, & wired remote ready •Over-
all size: 7-5/26"W x 2-1/4"H x 7-3/4"D •Finish: Silver
5103119 JBLMR145S
Sugg.Ret. \$149.99

\$90.00

**MBB2020 BLUETOOTH®
BLACK BOX SYSTEM**

•Bluetooth® audio streaming •4x50 watts
•AM/FM tuner •Aux in •E-prom •3 pair RCA outputs including
subwoofer •U.S. & European tuning •USB input & control •Built
in RF remote receiver (transmitter, MILRF9, is purchased separately)
•Implements RS485 communication protocol x 2 ports
5103445 JBLMBB2020
Sugg.Ret. \$299.99

\$176.78

**MS9200
MARINE SPEAKERS**

•6" Two-way integrated grille as-
sembly •Power handling: RMS-100 watts, Peak-300 watts •Sen-
sitivity: 91dB •Frequency response: 50Hz-21kHz •Polypropylene
woofer cone •1-3/8" balanced dome tweeter •UV & water-resis-
tant design •Encapsulated motor •SS hardware included •Instal-
lation size: 6"x 8-3/16"x3-1/8"D
5102568 MS9200
Sugg.Ret. \$249.99

\$98.10

**MA6002/MA6004
2-CHANNEL/4-CHANNEL
AMPLIFIERS**

•Fully marinized circuit boards to keep salt
air and corrosion away from the circuit path
•On-board 12dB electronic crossovers to
provide tuning options for systems of any
size •Variable bass-boost •Low-profile heatsink allows for instal-
lation in tight spaces •Large gauge barrier strips allow easy hookup
and use of larger gauge premium power, ground and speaker cable
•MA6002: 160 watts at 2 ohms, 60W RMS x 2 channels at 4 ohms,
less than or equal to 1% THD+N •MA6004: 145 watts at 2 ohms,
60W RMS x 4 channels at 4 ohms, less than or equal to 1%THD+N
Order # Mfg. # Model Sugg.Ret.
5102504 JBLMA6002 2-Channel \$159.99
5102505 JBLMA6004 4-Channel 189.99

**\$100.90
123.75**



**PRV16 AM/FM
MULTIMEDIA
RECEIVER**

•4x40 watts •Solid aluminum chassis •Aux-in •Portable-media
ready •USB input •ASTM 117 salt fog •3-1/4" hole cutout •Fits
in a standard tachometer opening
5103446 MIL-PRV16
Sugg.Ret. \$109.99

\$62.06

**PRV21 AM/FM
BLUETOOTH®
MULTIMEDIA RECEIVER**

•Bluetooth® audio streaming •4x45
watts •Solid aluminum chassis •Aux-in •Portable-media ready
•USB input •ASTM 117 salt fog •IP66 waterproof face •RF remote
ready •Comes w/flush-face mounting kit •Size: 6"Lx4"Wx2-1/2"D
5103448 MIL-PRV21
Sugg.Ret. \$179.99

\$89.99



MIL-MR-60 AM/FM MULTIMEDIA RECEIVER

•Features: 4x40 watts, pre-outs, rotary encoder, portable media
ready, USB, & Aux-in (front), bass/treble, balance controls, elec-
tronic volume, random/repeat play, intro scan, beep-tone-support,
& detachable control panel •Installation size: 7-1/8"Wx2-1/8"Hx4-
1/4"D •Overall size: 7-3/8"W x2-1/4"Hx5-1/8"D •Does not in-
clude cd mechanism •Color: black
5103336 MIL-MR60
Sugg.Ret. \$99.99

\$54.77



AM/FM/CD RECEIVER

•AM/FM/CD stereo receiver •4x45 Watts •USB, SD, & aux-in
front inputs •Electronic Shock Protection (ESP) •Detachable
control panel •Rotary encoder •Bass/treble & balance controls
•Intro scan •Random/repeat play •Installation size: 7-1/8"W x
2-1/8"H x 6-3/4"D
5103114 MILMR380
Sugg.Ret. \$148.99

\$93.55

MIL-SPK552

MARINE SPEAKERS

•5" coaxial marine •100 watts •UV protected •Installation size:
4-1/4" •Overall size: 5-3/4" •Sold in pairs
Order # Mfg. # Color.
5103450 MIL-SPK552B Black
5103451 MIL-SPK552W White
Sugg.Ret. \$49.99

\$23.89

MIL-SPK 652

MARINE SPEAKERS

•150 Watt, 6.5" coaxial speakers feature
20mm tweeter, All-molded waterproof de-
sign, & UV Protection •Installation size:
5-1/4"Wx2-1/2"Dx5-1/4"H •Overall size:
7-1/8"Wx3-1/4"Dx7-1/8"H
Order # Mfg. # Color
5103332 MIL-SPK652B Black
5103333 MIL-SPK652W White
Sugg.Ret. \$69.99

\$36.66



SUPER LUBE HUB KITS

•One replacement wheel hub kit/box •Bearings & hub cavity 100%
pregreased •Grease seal & bearings are preassembled •Includes
bearings, seal, Super Lube dust cap, cotter key & lug nuts or lug bolts

Order #	Mfg. #	Bearing Size	Sugg.Ret.
4-HOLE/BOLT			
5801285	81005	1"	\$57.99
5801286	81010	1-1/16"	54.99
4-STUD			
5801287	81015	1"	59.99
5-HOLE/BOLT			
5801290	81030	1-1/16"	60.99
5-STUD			
5801291	81035	1"	63.99
5801292	81040	1-1/16"	63.99
5-STUD UHI - TAPERED SPINDLE			
5801293	81045	1-1/16" & 1-3/8"	69.99

**\$29.46
28.05**

30.57

30.84

32.46

32.46

37.05



WHEEL HUB KITS

•Includes: bearings, seals, dust
cap, cotter key & lug nuts or bolts •Bearings & hub cavity 100%
pregreased •Grease seal & bearings are preassembled

Order #	Mfg. #	Bearing Size	Sugg.Ret.
4-HOLE/BOLT			
5801294	81050	1"	\$47.99
5801295	81055	1-1/16"	47.99
5-HOLE/BOLT			
5801298	81070	1"	49.99
5801299	81075	1-1/16"	49.99
4-STUD			
5801296	81060	1"	50.99
5801297	81065	1-1/16"	50.99
5-STUD			
5801300	81080	1"	53.99
5801301	81085	1-1/16"	53.99
5-STUD UHI - TAPERED SPINDLE			
5801302	81090	1-1/16" & 1-3/8"	61.99

**\$24.27
24.27**

25.62

25.62

25.97

25.97

27.00

27.00

31.88



5 HOLE TURBO HUB KIT

Oil bath lubricating system rotates individual roller bearings over
four times through oil for each wheel revolution keeping hub &
bearings cooler, reducing wear & friction, increasing tow vehicle
mileage. Unique see-through threaded oil cap assures leak-proof
seal & let's you know if bearings have adequate lubrication.

5806683 81023
Sugg.Ret. \$69.99

\$36.28



5 HOLE/BOLT HUB KIT

One replacement wheel hub kit/box. Bearings & hub cavity 100% pre-
greased. Grease seal & bearings are pre-assembled. Includes bear-
ings, seal, Super Lube dust cap, cotter key & lug nuts or lug bolts.

5801289 81025
Sugg.Ret. \$60.99

\$30.84



5024571



5027237



5025644



5026916



5022319



5025892

COMPONENTS & MOUNTING SYSTEMS

- Allows mounting of anything anywhere
- Over 160 interchangeable accessories offers solutions to most challenging mounting problems
- Reposition or remove electronics for viewing or safe keeping

Order #	Mfg. #	Included Components & Description	Sugg.Ret.	
MISCELLANEOUS COMPONENTS				
BASES				
5024571	RAM B-107-1BU	Unpacked Base w/1" Ball for Cuda Piranha MAX 10, 15, & 20)	\$24.99	\$8.40
5025602	RAM-202	2.5"Dia. Base w/1.5" Ball	15.99	8.78
5027247	RAM-D-202U	3.68" Dia. Base w/2.25" Ball	25.99	16.44
BASE KITS				
5024572	RAM-B-108B	1"-2.1" Rail-Accommodating Base w/1" Ball. Includes (1) 6"L & (1) 8" Metal Clamp Strap, & (1) 5.5" Rubber Strip.	25.99	12.33
DOUBLE SOCKET ARMS				
5027237	RAM-201	Accommodates 1.5" Ball Bases. OAL: 5.625". Socket-to-Socket length: 4.5".	25.99	14.55
5027238	RAM-201-D	Accommodates 1.5" Ball Bases. OAL: 9.125". Socket-to-Socket length: 8.75".	42.99	24.00
5027241	RAM-B-201	Accommodates 1" Ball Bases. OAL: 3.69". Socket-to-Socket length: 3".	14.99	8.34
5027242	RAM-B-201-A	Accommodates 1" Ball Bases. OAL: 2.38". Socket-to-Socket length: 2".	14.99	8.42
5027243	RAM-B-201-C	Accommodates 1" Ball Bases. OAL: 6". Socket-to-Socket length: 5.1875".	23.99	13.45
DOUBLE SOCKET ARMS				
5027245	RAM-D-201-U	Accommodates 2.25" Ball Bases. OAL: 8.375". Socket-to-Socket length: 6.5625".	68.99	39.02
5027246	RAM-D-201-U-C	Accommodates 2.25" Ball Bases. OAL: 5.0625". Socket-to-Socket length: 3.1875".	45.99	25.86
ADAPTER MOUNTS/PLATES				
5025644	RAM-338U	Double (Sonar/GPS) Adapter Plate. Mount Satellite Radio Receiver & Antenna on Single Platform. Stack Devices for Convenient Accessibility	14.99	8.39
5027240	RAM-202U-LO11	Adapter base w/1.5" dia. rubber ball & inserts directly to the back of Lowrance Elite 5 & Mark-5 fishfinders. Acts as quick release mechanism.	13.99	7.82
MOUNTING SYSTEMS				
5027236	RAM-101	RAM-202U Two 2.5"Dia. Bases w/1.5" Balls with RAM-201U Double Ball Socket Arm. Universal AMPS hole pattern.	47.99	26.85
5025394	RAM101G2	RAM-101U (Two 2.5"Dia. Bases & 1.5" Balls w/RAM Double Socket Arm. Mount Ht.: 7.35" tall @ max. extension & is collapsible. For Garmin Fishfinder & GPSMAP models.	47.99	27.32
5026915	RAM101-G4	RAM-101U (Two 2.5"Dia. Bases & 1.5" Balls w/RAM Double Socket Arm. Mount Ht.: 7.35" tall @ max. extension & is collapsible. Includes hardware used to attach Garmin Echo to the Mount.	52.99	29.87
5026916	RAM-101-LO11	RAM-201U (Double Socket Arm [O.A.L.: 5.63"] for 1.5" Ball) & RAM-202U (2.5"Dia. Base w/1.5" Ball). For Lowrance Elite-5 & Mark-5 Series fishfinders.	47.99	27.23
5027252	RAM-B-101-LO11	RAM-B-201U Double Socket Arm for 1" Ball & RAM-B-202U 2-7/16" dia. Base w/1" Ball for Lowrance Elite-4 & Mark-4 Fishfinders.	31.99	17.69
5022315	RAM 109H	RAM-111BT (Flat 6.25"x2" Rect. Universal Base w/Tightening Knob) connects to RAM-109H-BU (Horizontal Swing Arm Mount Bracket). Hardware included.	70.99	36.55
5022316	RAM 109V	RAM-111BT (Flat 6.25"x2" Rect. Universal Base w/Tightening Knob) connects to RAM-109V-BU (Vertical Swing Arm Mount Bracket). Hardware included.	69.99	44.79
5022318	RAM-B-107	RAM-B-201U (Double Socket Arm [O.A.L.: 3.69"] for 1" Ball) connects to RAM-B-202U (2-6/17"Dia. Base w/1" Ball).	38.99	22.25
5022322	RAM-B-138-GA1	RAM-B-138U (Two 2.5"Dia. Bases w/1" Balls & RAM Double Socket Arm), & RAM-HOL-GA1U (RAM Cradle for Garmin GPS 12, 12CX, 12XL, 12MAP, 38). Hardware included.	38.99	22.12
5022323	RAM-B-138-GA2	RAM-B-138U (Two 2.5"Dia. Bases w/1" Balls & RAM Double Socket Arm), & RAM-HOL-GA2U (RAM Cradle for Garmin GPS II, III, III+, V, V Deluxe). Hardware included.	38.99	22.01
5022325	RAM-B-138-MA1	RAM-B-138U (Two 2.5"Dia. Bases w/1" Balls & RAM Double Socket Arm), & RAM-HOL-MA1U (RAM Cradle for Magellan GPS 12, 310, 315, 320, GPSMAP 330 & 330M). Hardware included.	37.99	21.59
5503305	RAM-B-138-UN4	RAM-B-138U (Two 2.5"Dia. Bases & 1" Balls w/RAM Double Socket Arm), & RAM-HOL-UN4U (RAM Composite Universal Finger Grip™ Holder). Hardware included.	42.99	24.50
5025301	RAM137U	RAM-201U (Double Socket Arm [O.A.L.: 5.63"] for 1.5" Ball), RAM-202U (2.5"Dia. Base w/1.5" Ball), & RAM-137BU (3"x11" Rect. Base w/1.5" Ball). Hardware included.	65.99	38.06
5022319	RAM-B-111	RAM-B-201U (Double Socket Arm [O.A.L.: 3.69"] for 1" Ball), RAM-B-202U (2-6/17"Dia. Base w/1" Ball), & RAM-B-111BU (Flat 6.25"x2" Rect. Electronics Base w/1" Ball for Garmin GPSMAP 162,168, 175, 180, 180C, 182, 185, 188, 232, & 238). Hardware included.	31.99	18.65
5022317	RAM 111	RAM-201U (Double Socket Arm [O.A.L.: 5.63"] for 1.5" Ball), RAM-202U (2.5"Dia. Base w/1.5" Ball), & RAM-111BU (Flat 6.25"x2" Rect. Electronics Base w/1.5" Ball). Hardware included.	45.99	29.27
5025601	RAM-B-107-1	RAM-B-201U (Double Socket Arm [O.A.L.: 3.69"] for 1" Ball), RAM-B-202U (2-6/17"Dia. Base w/1" Ball), & RAM-B-107-1BU (Base w/1" Ball for Cuda Piranha MAX 10, 15, & 20). Hardware included.	36.99	18.34
5022313	RAM 107	RAM-201U (Double Socket Arm [O.A.L.: 5.63"] for 1.5" Ball), RAM-202U (2.5"Dia. Base w/1.5" Ball), & RAM-107BU (Base w/1.5" Ball for Hummingbird Series 700, 500, 300, 100, Matrix [excl. Matrix 97], & Ray Marine Apelco Fishfinder w/Matching Pattern Hole). Hardware included.	53.99	31.70
5025600	RAM-B-101-235U	RAM-B-201U (Double Socket Arm [O.A.L.: 3.69"] for 1" Ball), RAM-B-202U (2-6/17"Dia. Base w/1" Ball), & RAM-B-235U (Double U-Bolt Base w/1" Ball). Hardware included.	38.99	20.64
5025188	RAM-D-111U	RAM-D-201U (Double Socket Arm [O.A.L.: 8.375"] for 2.25" Ball), RAM-D-202U (3.68"Dia. Base w/2.25" Ball) & RAM-D-111BU (3"x11" Rect. Base w/2.25" Ball) Hardware included.	138.99	78.71
5025625	RAM-D-111UC	RAM-D-201U-C (Double Socket Arm [O.A.L.: 5.06"] for 2.25" Ball), RAM-D-202U (3.68"Dia. Base w/2.25" Ball) & RAM-D-111BU (3"x11" Rect. Base w/2.25" Ball) Hardware included.	106.99	61.34
5025892	RAM-111U-B	RAM-201U-B (Double Socket Arm [O.A.L.: 3.5"] for 1.5" Ball), RAM-202U (2.5"Dia. Base w/1.5" Ball), & RAM-111BU (Flat 6.25"x2" Rect. Electronics Base w/1.5" Ball). Hardware	45.99	26.42



HANDLE WRENCH FOR "D" SIZE BALL ARMS & MOUNTS

- Designed to be used with the knob found on the "D" size ball arms & mounts
- Matches the shape of the knob found on the side of "D" arms, & lets you give the arm an extra tight grip
- Powder coated Marine Grade aluminum
- Ball size: 2.25"

5027339 RAM-KNOB9HU
Sugg.Ret. \$19.99



\$11.24

TROLLING MOTOR STABILIZER MOUNT

- Consists of a double ball socket arm, 2.5" diameter round base that contains the universal AMPS hole pattern & single strap base
- Strap will accommodate rails from 0.5" to 2" in diameter
- Trolling motor stabilizer will take every bit of the vibration out of your trolling motor while all the time protecting the head, shaft & mount from damage
- Powder coated marine grade aluminum
- 1.5" rubber ball size

5204946 RAM-108
Sugg.Ret. \$52.99



\$29.96

TROLLING MOTOR STABILIZERS

- Safely and securely attach the shaft of your trolling motor to your boat
- Accommodates shafts up to 2" in diameter

Order #	Mfg. #	Kit Features	Sugg.Ret.
5204466	RAM-108-1	5-5/8" arm & hardware	\$49.99
5204467	RAM-108-1-D	9-1/8" arm & hardware	69.99



\$28.45
40.41

RAM-ROD™ 2000 HOLDER W/MOUNT

- High strength composite construction
- The mount included rotates the rod holder 360-degrees, while tilting the cradle forward and back for the optimum angle
- Packaged in clear clam shell
- Made in the USA
- Includes Bulkhead mount
- Mounts vertically
- 1.5" Rubber Ball Size

5503502 RAM-114-B
Sugg.Ret. \$34.99



\$16.02

RAM-TUBE™ 2008

- RAP-119 consists of the RAM-TUBE™ 2008 fishing rod holder & 2.5" diameter round base that contains the universal AMPS hole pattern
- RAM rubber ball, socket & ratcheting feature
- RAM-TUBE™ 2008 tube holder integrates the patented rubber ball & socket design with a self draining & quick to access tube for the butt of most any fishing rod
- Tube is made of extremely durable composite
- Ideally suited for anything from Kayaks to Tournaments boats
- Compact & simply design is ready for your next day on the water

5504774 RAP-119
Sugg.Ret. \$29.99



\$16.35

SUBMERSIBLE "OVER 80"

TAIL LAMP

- For trailers 80" wide or wider •Unique, compact size •Lens sonically-sealed to base providing "bell jar", making lamp fully submersible with easily replaceable bulbs
- Pre-wired with molded plugs for easy installation •Size: 6"Lx3-1/2"Hx2-1/4"D

Order #	Mfg. #	Type	Sugg.Ret.
5806697	403025	8-Function, Roadside	\$20.99
5806698	403075	7-Function, Curbside	22.99



\$10.48
11.40

SUBMERSIBLE

OVER 80" TAIL LAMP

- For boat & PWC trailers 80" wide or wider •Gasketed lens protect bulbs & contacts using the "bell jar" principle when trailer is submerged in water •Properly mounted, economically meets all DOT-108 requirements •Easy replacement of bulbs & lens using standard #1157 & #193 bulbs •Prewired for easy installation
- Size: 6-1/4"Lx5-1/2"Hx2-1/2"D

Order #	Mfg. #	Style	Sugg.Ret.
5807419	2523074	8-Function Tail Lamp, Roadside	\$7.99
5807420	2523024	7-Function Tail Lamp, Curbside	8.99



\$4.54
4.72

WATERPROOF "OVER 80"

LOW-PROFILE TAIL LAMP

- Sealed capsule protects bulbs from corrosion & thermoshock failure •Popular, reliable waterproof design •Properly mounted, meets all DOT-108 lighting requirements for trailers 80" or wider •Size: 8"Lx2-7/8"Hx2-3/4"D

Order #	Mfg. #	Style	Sugg.Ret.
5800289	403026	8-Function, Roadside	\$11.99
5800298	403076	7-Function, Curbside	12.99



\$6.15
6.48

STANDARD "OVER 80" TAIL LAMP

- For trailers 80" wide or wider •Easy replacement of bulbs & lens using standard #1157 & #193 bulbs •Uses Wesbar's Quick Connect/Disconnect Wiring feature
- Size: 6"Lx4-1/2"Hx2-9/16"D

Order #	Mfg. #	Style	Sugg.Ret.
5807415	2823293	8-Function Tail Lamp, Roadside	\$9.99
5807414	2823294	7-Function Tail Lamp, Curbside	9.99



\$5.56
5.32

STANDARD "UNDER 80" TAIL LAMP

- For variety of trailers •Bulbs & lens are easily replaceable, uses standard #1157 & #57 bulbs •Uses Wesbar's Quick Connect/Disconnect wiring feature •Size: 4-3/4"Lx4-1/2"Hx2-9/16"D

Order #	Mfg. #	Type	Sugg.Ret.
5807412	2823283	7-Function, Rail, Roadside	\$8.99
5807413	2823284	6-Function, Rail, Curbside	8.99



\$4.46
4.42

SUBMERSIBLE "UNDER 80"

TAIL LAMP

- Ideal for boat & PWC trailers less than 80" wide Gasketed lens protect bulbs & contacts using the "bell jar" principle when trailer is submerged in water •Properly mounted, economically meets all DOT-108 requirements •Easy replacement of bulbs & lens using standard #1157 & #193 bulbs •Prewired for easy installation •Size: 5"Lx5-1/2"Hx2-1/2"D

Order #	Mfg. #	Style	Sugg.Ret.
5807416	2523023	7-Function Tail Lamp, Roadside	\$8.99
5807417	2523073	6-Function Tail lamp, Curbside	6.99



\$4.43
3.94

OVAL TAIL LAMP "60 SERIES"

- Sonically-sealed polycarbonate lens & housing protect heavy-duty, shock-mounted dual filament bulb •Mounts vertically or horizontally in flush mount grommet •Tail lamp kit
- Lamp module, grommet & plug •Red

5801076 403080
Sugg.Ret. \$11.99



\$6.33

F2™ TRAILER JACK

- Precision extruded aluminum alloy inner & outer tubes, combined w/twin alignment bushings for a precision alignment •Anodized finish keeps tubes virtually corrosion free
- Adjustable mount & swivel system that can be adjusted to any desired height •Integrated pull pin w/ergonomic grip makes it easy to swivel into position for lifting or transport •Twin track 7" wheels are designed to roll independently to make changing direction smooth & effortless •5-1/2" wide track wheel base adds to superior stability •Lift capacity: 1600 lbs.
- Screw travel: 10" •Mount travel: 8"

Order #	Mfg. #	Model	Sugg.Ret.
5807214	1413020134	Twin Track	\$277.99
5807215	1413040134	Wide Track	277.99



\$113.65
113.65

BOLT-THRU JACKS

- Sidewind handle •Zinc
- 5802330: 6" caster wheels, Retracted/11.25", Extended/22.75"
- 5807425: 8" caster wheels, Retracted/12.75", Extended/22.75"
- 5802319: 8" caster wheels, Retracted/14.25", Extended/24.75"
- 5802320: 6" dual caster wheels, Retracted/12.75", Extended/24.75"

Order #	Mfg. #	Clearance	Capacity	Sugg.Ret.
5802330	XP100101	10.50"	1000 lbs.	\$94.99
5807425	XP150101	12.50"	1500 lbs.	114.99
5802319	XP15L 0101	14.50"	1500 lbs.	135.99

DUAL WHEEL

Order #	Mfg. #	Clearance	Capacity	Sugg.Ret.
5802320	XPD15L 0101	12.50"	1500 lbs.	152.99



\$41.68
61.32
65.13

73.46

VALUE SERIES JACK

- 3/8" spring-loaded locking pin for secure operation •Corrosion-resistant zinc finish •Retaining ring swivel •10" travel •Sidewind handle •6" polyolefin wheel
- Retracted: 12.8" •Extended: 22.8" •Clearance: 10.1" •Capacity: 1000 lbs.

5807079 EJ10000101
Sugg.Ret. \$51.99

\$21.71



RETAINING RING SWIVEL JACK

- Industry leading corrosion protection •Z-Max™ 600 clear zinc finish •600 hour salt spray rating per ASTM B117 standard •1,200 lbs. capacity •10" travel •Bolt-on •6" wheel •Mounting hardware included

5807426 TJ12000101
Sugg.Ret. \$56.99

\$30.76



SWIVEL TRAILER STAND W/WHEEL

- Ideal for dinghy, personal watercraft and light boats under 12' •Retaining ring swivel mount •Clear zinc finish •6" thermoplastic wheel •400 lb. capacity

5807211 1410050149
Sugg.Ret. \$58.99

\$24.05



A-FRAME JACKS

- Easy cranking •Smooth comfortable ergonomic handles
- Dependable vertical & side load capacity •Precision-fitted parts •Painted outer & inner tube •2" tube dia.
- 5807206: Topwind •15" travel •Retracted: 8.80" •Extended: 23.80" •Clearance: 12.20" •Cap.: 2000 lbs.
- 5806930: Sidewind •13" travel •Retracted: 8.60" •Extended: 21.50" •Clearance: 13.00" •Cap.: 2000 lbs.
- 5807207: Topwind •15" travel •Retracted: 10.30" •Extended: 25.30" •Clearance: 10.20" •Cap.: 5000 lbs.
- 5807205: Sidewind •15" travel •Retracted: 8.60" •Extended: 23.60" •Clearance: 12.75" •Cap.: 5000 lbs.

Order #	Mfg. #	Sugg.Ret.
5807206	1550220117	\$72.99
5806930	1551570117	68.99
5807207	1550320117	78.99
5807205	1700100117	112.99

\$31.78
35.69
32.28
45.94



BASE PLATE KIT

- Removable disc foot w/pin. 2.1" tall
- Capacity 2000-5000 lbs.

5807050 500244
Sugg.Ret. \$21.99

\$9.40



NEW!

SHOCK-LOCK™ SUPER DUTY ELECTRONICS MOUNT

•Swivel head electronics mount is designed to securely hold the heaviest electronics in place under any condition •Tested in the most severe conditions •Anodized aircraft aluminum & SS for strength & durability •Designed for universal use from the smallest to largest screens •Two 180° pivot points allow for max location adjustment •Easy On/Off w/spring-loaded release mechanism
5027475 RMC-501ES-DP
Sugg.Ret. \$149.99

\$93.50



ATLAS MICRO JACKER™

•Smallest & lightest hydraulic jack on the market - weighs 23 pounds
•Perfect for shallow water skiffs & flat boats •Smallest footprint available: 14-5/8"W x 11-1/2"H •Strong & fast actuator - 8 seconds top to bottom
•75 HP outboards max.
6217797 AHJM-4-DP
Sugg.Ret. \$1032.99

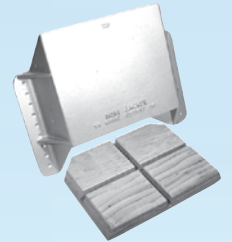
\$629.85



MINI-JACKER™

•Clamp-style small outboard jack plate •Cast aluminum bracket •Marine grade transom block 4" setback •3" vertical •Maximum weight: 150 lbs. •Maximum HP: 35
6201164 MJ-1-DP
Sugg.Ret. \$131.99

\$74.35



STANDOFF ROD HOLDER

•Rocket Launcher-style with reel slot •Injection molded poly material •Fixed standoff for individual mounting •Color: Off White
5501666 RHSF-3W-DP
Sugg.Ret. \$7.99

\$3.20



HI-JACKER™ FIXED JACK PLATE

•Inexpensive short transom fix •Solid 3/8" aluminum extrusion •3 engine mount holes, 2 transom holes •Total vertical of 5-1/2" •Max HP: 150 •Setback: 4"
6240687 JP-4FA-DP
Sugg.Ret. \$164.99

\$91.45



PRO HI-JACKER™ JACK PLATE

•4" vertical height adjustment •6" setback •3/8" high strength aluminum with polished mirror finish •1-piece design, top adjust •Locking bars allow one wrench adjust •Handles all V6 outboards •Setback: 6" •Aluminum finish
6209199 JP-6PW-DP
Sugg.Ret. \$310.99

\$207.40



ROD HOLDERS

•Durable UV stabilized tubes •1-piece design for easy installation •Rod index in bottom •8-3/4"Lx1-1/4"ID

Order #	Mfg. #	Style	Color	Sugg.Ret.
3-1/2"x4-1/4" ON THE FLANGE				
5500140	RH-1-DP	30° Angled Top	Black	\$6.99
5501792	RH-1FW-DP	30° Angled Top	White	6.99
2-1/2"x4"				
5500141	RH-2-DP	Flat Top	Black	6.99
5501793	RH-2FW-DP	Flat Top	White	6.99

\$3.20
3.20
3.20
3.20



ROD RACKS

•UV stabilized polypro tube with reel slots •High density polyethylene racks •Knife & pliers holders •Stainless steel mounting hardware

Order #	Mfg. #	Holds	Color	Sugg.Ret.
5501566	RHRB-2B-DP	2	Black	\$42.99
5501567	RHRB-3B-DP	3	Black	49.99

\$22.45
28.70

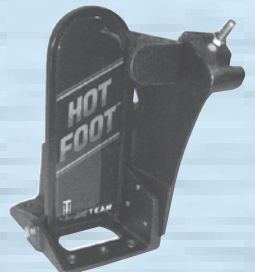


HOT FOOT™ PRO TOP LOAD FOOT THROTTLE

•Improved safety & throttle control •Topside cable connections •Patented idle stop for FICHT & Optimax •SS hardware with Teflon® bearings

Order #	Mfg. #	Fits	Sugg.Ret.
6240688	HF-1T-DP	OMC, Merc., Mariner	\$198.99
6216864	HF-1CT-DP	Honda, Yamaha, Chrysler, Suzuki	154.99

\$90.85
90.85



ROD TAMER™ ROD STRAPS

•Holds rods securely, can't snag hooks •Polyurethane cord, UV & chemical-resistant •Non-corrosive molded ends & hooks •GUNWALE MOUNT: Retracts into gunwale when unused •Requires 3/4" hole

•DECK MOUNT: Strap end mounts directly to deck

Order #	Mfg. #	Length	Holds	Sugg.Ret.
---------	--------	--------	-------	-----------

GUNWALE MOUNT

BULK

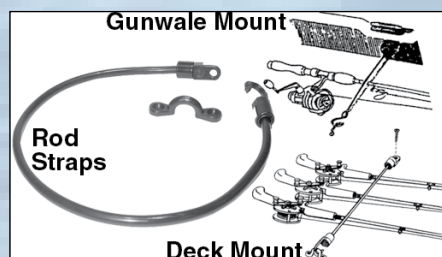
5501384	RHD-1-DP	12"	3 Rods	\$12.99
----------------	----------	-----	--------	---------

DISPLAY PACK

5501791	RHD-2-DP	18"	6 Rods	13.99
----------------	----------	-----	--------	-------

DECK MOUNT

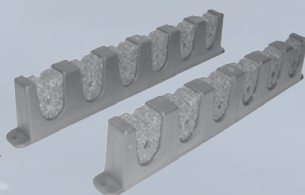
5501667	RT-18-DP	18"	7 Rods	7.99
----------------	----------	-----	--------	------



ROD STORAGE HOLDER

•Mount horizontally or vertically •Foam insert holds rods securely •Holds up to 6 rods
5501668 FRH-1P-DP
Sugg.Ret. \$14.99

\$8.20



PT-130

POWER TILT & TRIM

•Incorporates a 6" setback which enhances boat stability and enables the prop to get a better "bite" at a higher prop setting •With the touch of a switch, you can raise the motor to protect the prop from damage and also your back from strain •20° of Trim and 90° of Trim & Tilt •Tuck your motor in to get the boat on plane smoother and faster •Change the angle of the motor to obtain the best performance for your load and water conditions •Constructed of 1/2" 6061 T6 alloy aluminum extrusions and fastened w/stainless steel fasteners •100% non-ferrous material which makes it impervious to saltwater and freshwater •Totally waterproof marine electric hydraulic system that is rated over 7800 lbs. of thrust •Fits on virtually any type of boat and outboard motor •Rated for 10hp-130hp motors and fits standard B.I.A. bolt pattern motors without drilling holes •OPTIONAL Tilt & Trim gauge is sealed, drip-proof, mounts in dash •Sending unit is completely sealed & waterproof

Order #	Mfg. #	Type	Sugg.Ret.
6204005	13001	With Trim Gauge	\$885.99
6204006	13002	Without Trim Gauge	751.99

\$674.00
571.80





V-HULL RUNABOUT BOATS TRAILERABLE BOAT COVERS

•Includes euro-style with windshields & bow rails

Order # Mfg. # Max. C/L-Beam Color Sugg.Ret.

PERFORMANCE POLY-GUARD: 8 OZ. POLYESTER OUTBOARD MODELS

5708699	77015PII-10	15'-6"-80"	Gray	\$221.99	\$115.60
5708700	77016PII-10	16'-6"-86"	Gray	243.99	126.85
5707432	77017PII-10	17'-6"-90"	Gray	250.99	135.30
5707433	77018PII-10	18'-6"-96"	Gray	269.99	145.20
5707434	77019PII-10	19'-6"-96"	Gray	282.99	152.25
5707435	77020PII-10	20'-6"-102"	Gray	329.99	178.35
5708514	77021PII-10	21'-6"-102"	Gray	358.99	193.85
5707882	77022PII-10	22'-6"-102"	Gray	409.99	203.70

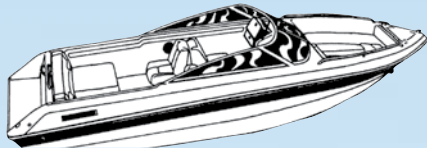
PERFORMANCE POLY-GUARD: 8 OZ. POLYESTER INBOARD/OUTDRIVE MODELS

5707436	77117PII-10	17'-6"-90"	Gray	250.99	135.30
5707437	77118PII-10	18'-6"-96"	Gray	269.99	145.20
5707438	77119PII-10	19'-6"-96"	Gray	282.99	152.25
5707439	77120PII-10	20'-6"-102"	Gray	329.99	178.35
5707440	77121PII-10	21'-6"-102"	Gray	358.99	193.85
5708057	77122PII-10	22'-6"-102"	Gray	377.99	203.70
5708058	77123PII-10	23'-6"-102"	Gray	408.99	212.85
5708702	77124PII-10	24'-6"-102"	Gray	425.99	222.00

SUN-DURA™ - 7 OZ. POLYESTER

OUTBOARD MODELS

5710297	77017S-31	17'-6"-90"	Admiral Navy	303.99	153.75
5710298	77018S-31	18'-6"-96"	Admiral Navy	326.99	164.99
5710299	77018S-02	18'-6"-96"	Black	326.99	164.99
5710300	77020S-31	20'-6"-102"	Admiral Navy	400.99	202.65
5710301	77020S-02	20'-6"-102"	Black	400.99	202.65
5710302	77022S-31	22'-6"-102"	Admiral Navy	457.99	231.50



JON STYLE BASS BOAT

TRAILERABLE BOAT COVERS

•Coverage provided for trolling motors, depth finders & pedestal seats (w/seats on pedestals & backs of seats folded down) •Designed for single console •If motor is mounted on a jack plate, order next larger size

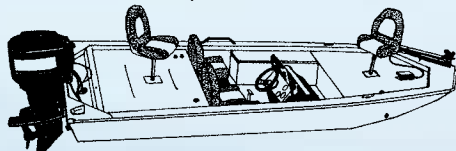
Order # Mfg. # Max. C/L-Beam Color Sugg.Ret.

PERFORMANCE POLY-GUARD: 8 OZ. POLYESTER OUTBOARD

5708737	77814PII-10	14'-6"-68"	Gray	\$202.99	\$104.99
5708738	77815PII-10	15'-6"-70"	Gray	215.99	112.05
5708739	77816PII-10	16'-6"-72"	Gray	224.99	116.99
5708740	77817PII-10	17'-6"-74"	Gray	236.99	123.30
5708741	77818PII-10	18'-6"-84"	Gray	256.99	133.45

EXTRA WIDE

5710110	77816EPII-10	16'-6"-84"	Gray	242.99	122.35
5710111	77817EPII-10	17'-6"-84"	Gray	265.99	134.25
5710112	77818EPII-10	18'-6"-94"	Gray	263.99	133.45



OPEN JON BOAT

TRAILERABLE BOAT COVERS

Order # Mfg. # Max. C/L-Beam Color Sugg.Ret.

PERFORMANCE POLY-GUARD: 8 OZ. POLYESTER OUTBOARD

5708742	74200PII-10	12'-6"-58"	Gray	\$172.99	\$89.50
5708743	74201PII-10	14'-6"-60"	Gray	181.99	94.45
5708744	74202PII-10	15'-6"-60"	Gray	196.99	102.20
5708745	74203PII-10	16'-6"-72"	Gray	213.99	111.35
5708746	74204PII-10	17'-6"-80"	Gray	226.99	116.99
5709274	74205PII-10	18'-6"-84"	Gray	231.99	118.40

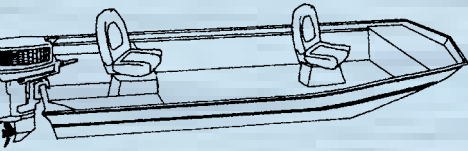
BAY STYLE CENTER CONSOLE FISHING BOATS TRAILERABLE BOAT COVERS

•Center console bay style fishing boats with shallow draft hulls •Cover accommodates up to 55" center console & up to 8" bow rails

Order # Mfg. # Max. C/L-Beam Color Sugg.Ret.

PERFORMANCE POLY-GUARD: 8 OZ. POLYESTER OUTBOARD

5708853	71016PII-10	16'-6"-90"	Gray	\$276.99	\$141.65
5708067	71017PII-10	17'-6"-90"	Gray	277.99	144.45
5708068	71018PII-10	18'-6"-94"	Gray	301.99	157.15
5708069	71019PII-10	19'-6"-96"	Gray	323.99	168.45
5708070	71020PII-10	20'-6"-96"	Gray	351.99	183.25
5708851	71021PII-10	21'-6"-96"	Gray	384.99	193.10
5708859	71023PII-10	23'-6"-96"	Gray	439.99	225.50

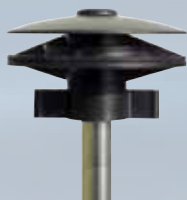


VENT II

•High impact, black plastic vent allows moisture to escape from beneath the boat cover to help prevent mildew •Use with any 3/4" or 7/8" support pole •Pole not included •Diameter: 4-1/2"

5708827 VENT II

Sugg.Ret. \$13.99



\$7.20



ROD RIGGER

•Increase your trolling spread & catch more fish w/swept-back outrigger design •Made of highly polished 316 stainless steel •Features strong 48" nylon rod safety strap long enough to fight fish without unlatching •Includes an integrally-cast gimbal pin & white vinyl liner to protect rods •For use in metal gunnel rod holders only •Silver

5504468 53630

Sugg.Ret. \$184.99

\$93.45



TOURNAMENT

ROD RACK & TOOL HOLDER

•Durable one-piece polyurethane construction •Corrosion-free •Mount on boat, in garage, or home •Features (3) rod holders, (7) lure hanging holes, one knife storage slot & one pliers slot •11"Hx12.5"W •Stainless mounting screws included

Order # Mfg. # Color

5503588 55110A White

5504469 55111A Black

Sugg.Ret. \$24.99

\$12.70



NYLON ROD HOLDERS

•Corrosion-free, 30-degree light-duty fishing rod holders •Tough, UV-resistant, one-piece nylon molded •10" tube •Cap is 4"Lx3.5"W •Installs into 2-1/16" hole •Mount with 3/16" screws (not included)

Order # Mfg. # Color

5504470 55120A White

5504471 55121A Black

Sugg.Ret. \$9.99

\$4.60



SINGLE ROD HOLDER

•Durable, one-piece polyurethane construction •Corrosion-free •Mount on boat, in garage, or home •Holds fresh/saltwater rods •Integrated mounting stand-offs •Mounting hardware not included

Order # Mfg. # Color

5503589 55115A White

5504640 55116A Black

Sugg.Ret. \$8.99

\$4.60



30 DEGREE ROD HOLDER W/CAP

•304 Stainless steel construction •Mirror polished •UV resistant black PVC cap & liner •Features 9" deep tube with 1-9/16" inside diameter •Includes 1/4" 304 stainless steel gimbal pin •Mounts with 3/16" screws (Not Included)

5503657 55100A

Sugg.Ret. \$41.99

\$21.15



ADJUSTABLE CLAMP-ON ROD HOLDER

•304 Stainless steel tube lined with UV resistant black PVC & fitted with chrome zinc alloy adjustable clamp •Features 9" deep tube with 1-5/8" inside diameter •Fits any rail between 3/4"OD & 1-1/16"OD •Angle from the rail adjusts in 15 degree increments •Solid cap protects rails from dents •Includes (4) 304 stainless mounting screws & Allen key

5503658 55105A

Sugg.Ret. \$68.99

\$34.60



PONTOON ADJUSTABLE ROD HOLDERS

•Rod holder includes (2) protective liners to fit 1.0" & 1.25" square rails •Liners are rounded on the outside so rod holder can be adjusted to any angle above water •Hidden left or right adjustment •Made from 304 stainless steel tube lined w/UV resistant black PVC & fitted w/chrome zinc alloy adjustable clamp •Angle around rail is infinitely adjustable •Angle to left or right adjusts in 15° increments •9.0" tall tube w/1-5/8" ID •Includes installation hardware, mounting screws & hex key for angle adjustments & tightening clamp in place

5504829 55108A

Sugg.Ret. \$69.99

\$40.60



Johnny Ray LLC

New Ideas for Better Fishing !!



5000634



5001128



5002259



5026986



5001031



5025398

PATENTED SWIVEL MOUNTS

•Features simple, one-handed operation to adjust the viewing angle •Securely holds the unit in place, no matter the boating conditions •No knobs to tighten or multiple joints to move •Mounts keep the electronic units close to the boat, not "out-on-a-limb" where vibration and rough water can make viewing the unit virtually impossible •Every model features a fully rotational swivel top that automatically locks in its turned position and can be removed by using its patented top removal feature to allow for storage of the unit •Mounts are injection molded from DuPont® 6/6 Nylon material and assembled w/stainless steel springs and screws

Order #	Mfg. #	Style	Description	Sugg.Ret.	
5000634	JR-300	JR-300	45 position automatically locking swivel top. Push-button top removal mechanism. Low profile design - only 1-1/4" tall. Supports weights up to 7 lbs.	\$31.99	\$16.60
5001128	JR-400	JR-400	45 position automatically locking swivel top. Push-button top removal mechanism. Low profile design - only 1-1/4" tall. Supports weights up to 7 lbs.	31.99	16.60
5002259	JR500	JR-500	45 position automatically locking swivel top. Push-button top removal mechanism. Low profile design - only 1-1/4" tall. Supports weights up to 7 lbs.	31.99	16.60
5026986	JR-205	JR-205	24 position automatically locking top. Lever-release top removal mechanism. Heavy-duty.	44.99	23.35
5001031	JR-206	JR-206	24 position automatically locking swivel top. Lever release top removal mechanism. Heavy-duty for larger electronics. Supports up to 14 lbs.	44.99	23.35
5025398	JR-207	JR-207	24 position automatic locking top. Lever release top removal feature. Heavy-duty design for larger electronics. Supports up to 14 lbs.	44.99	23.35
ACCESSORIES					
5001132	JR-300B		Swivel base only, push-button release, for 300,400 & 500 tops	24.99	12.99
5001130	JR-205B		Swivel base only, lever release, for JR-206 tops	34.99	18.15



TRANSDUCER MOUNTING BRACKET

•Designed to provide a solid, secure and easy way to mount the transducer of your electronic unit to the shaft of your trolling motor •Brackets offset the transducer to the side of the motor to protect it from damage •Also allows for easy cone angle adjustments to make the unit perform to its true potential •The brackets have the ability to convert any conventional electronic unit to a side-scanning unit by turning the transducer 90° to the lake bottom •Die-formed from .093 aircraft grade aluminum, anodized to eliminate electrical interference and include zinc-plated mounting hardware

•Model JR-1: Fits 1" dia. shaft: MotorGuide, Evinrude, Johnson, OMC

•Model JR-2: Fits: Minn Kota

Order #	Mfg. #	Model	Sugg.Ret.	
5000631	JR-1	JR-1	\$16.99	\$11.40
5000632	JR-2	JR-2	16.99	11.40

JR-400HLP-M

COMPLETE

SWIVEL MOUNT ASSEMBLY

•Machined from durable 6/6 Nylon for corrosion resistance & long life •Features the JR-400 swivel mount top already installed w/HLP Plate & hardware, & JR-300B swivel base •Simply locate your unit's base onto the plate, & drill the electronics pattern accordingly into the HLP Plate •Smaller Humminbird models like PiranhaMAX, can be drilled & reverse bolted from underside to match Electronic hole pattern •Nuts and washers exposed at top

5026893 JR-400HLP-M

Sugg.Ret. \$41.99

\$33.11



SPEED READER

UNIVERSAL

TRANSOM MOUNTED

TRANSDUCER BRACKET

•Eliminates your high speed depth sounder reading problems •Constructed of heavy 16 gauge T-304 Stainless Steel & assembled w/stainless steel hardware •Designed & developed specifically to provide flawless depth finder reading at high speed or while cornering •Unique two-piece adjustable design provides an infinite number of settings to match your boat's transom angle & the water's surface •Keeps the transducer in clean (non-turbulent) water at speed or when cornering •"Kick-up" design protects your transducer from floating or hidden objects under water

5026891 JR-3

Sugg.Ret. \$34.99

\$22.75



ACCESSORY WIRING

TERMINALS

•Developed to simplify the battery compartment of your boat, RV, or any other 12V battery application where multiple accessory wiring is needed •Compact size allows them to be used under virtually any battery enclosure without interference •Each die-formed contact plate has been designed to accept the correct battery post stud on deep cycle or marine cranking batteries •Every terminal is supplied w/four each #12-10 ga. and #16-14 ga. wiring connectors secured to the contact plate w/stainless steel screws •High density injection-molded polyethylene outer cases •.090" thick contact plates to minimize current resistance •Color coded casing to ensure proper polarity retention •Brass •For: Freshwater/Saltwater

6033532 JR-600-B

Sugg.Ret. \$24.99

\$15.55

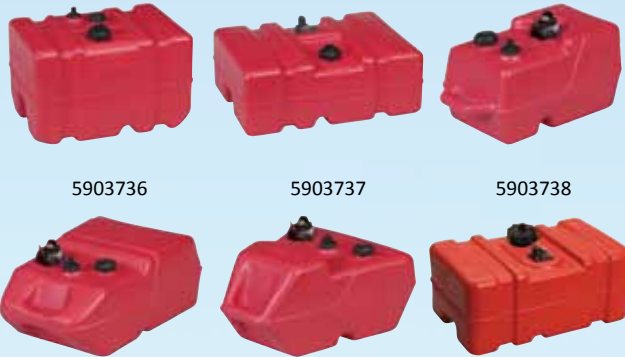


FISHING ROD HOLDERS

•Kit comes complete w/four 7" lengths of aluminum track, 8 vinyl rod holders & hardware •Securely holds rod tip & handle •Permanent set not required •Adjustable, mounts vertical or horizontal in boats or storage areas •Ideal for bow/stern light staff holder •Black
5502954 091025-10
 Sugg.Ret. \$27.99



\$14.40



5903736

5903737

5903738

5903739

5903740

5903823

EPA COMPLIANT

PORTABLE PLASTIC FUEL TANKS

•Manufactured from high-density polyurethane w/ultraviolet inhibitors •Advanced manufacturing techniques provide the highest quality components available & meet the new Low Permeation Standards put in place by the EPA/CARB regulations effective 1/1/2011 •All portable tanks 12 gallons & under meet current U.S. Coast Guard & ABYC Standards •Includes EPA compliant 2-stage "Click When Closed" self-venting fuel cap •Seamless one-piece construction •NOTE: Ultra Tanks include 90-degree fuel withdrawal assembly that rotates 360-degrees to reduce fuel gauge w/glass lens for years of clear viewing (Rotation not applicable for models 630012LP, 630013LP & 620009LP)

Order #	Mfg. #	Gal.	Dimensions	Sugg.Ret.	
5903736	630012LP	12	22.90"Lx14.30"Wx13.60"H	\$144.99	\$75.45
LOW PROFILE DESIGN					
5903737	630013LP	12	24.30"Lx18.10"Wx10.75"H	144.99	75.45
BOW DESIGN w/HANDLE					
5903740	620040LP	6	19.5"Lx16"-to-6.5"Wx12"H	108.99	56.65
ULTRA TANKS w/HANDLE					
5903738	620003LP	3	16.75"Lx10.75"Wx8"H	78.99	41.15
5903739	620049LP	6	20.50"Lx12.75"Wx10.50"H	84.99	44.30
5903823	620009LP	9	22.9"Lx14.3"Wx11.75"H	131.99	68.80

FLO N' GO™ MAXFLO COMBO KIT

•Kit includes maxflo fuel siphon & 6.6 gallon AB series jerry can •At-the-handle pump control allows auto shut-off & restart •Hassle-free siphon control •Pump gas in any direction (including upward) for easy, clean fill-ups even in hard to reach places •Includes multi-function safety shut-off valve •EPA approved



Order #	Mfg. #	Description	Sugg.Ret.	
5903818	008341	MaxFlow Fuel Siphon & Jerry Can	\$105.99	\$54.90
MAXFLO FUEL SIPHON - HIGH FLOW MODEL				
5903819	008338	Pumps Apx. 2 Gallons Per Minute	71.99	37.45

UNIVERSAL FUEL LEVEL SENDER™

•With diesel return •Designed for top mounting in aluminum, plastic or stainless fuel tanks in all types of marine vessels •All stainless steel construction resists & is ethanol compliant •SS 1/4" NPT female thread with 3/8" Barb •1/4" ground spade terminal •Pre-bent 90 degree float arm •Tank Depth: 6-24"/152-610mm
5903837 035789-10
 Sugg.Ret. \$72.99

\$37.70

ELECTRIC SENDING UNITS

•Internal measurement components will not rust or corrode •Electrical senders & dash-mounted gauge are calibrated to 33 to 240 Ohm's •100% inspected during manufacturing to ensure quality •Swingarm float rotates easily in 90° increments for tank wall or baffle clearance

Order #	Mfg. #	Tank Depth	Sugg.Ret.	
5903548	035725-10	4" to 27"	\$31.99	
5903318	035722-10	6" to 12"	33.99	
5903319	035729-10*	12" to 24"	30.99	
UNIVERSAL UNIT KIT W/DASH MOUNTED GAUGE				
5903549	035726-10	4" TO 27"	58.99	
DASH MOUNTED GAUGE				
5903550	035727-10		38.99	
5-HOLE GASKET				
5903551	035728-10		9.99	

\$17.20
17.75
16.50

33.20

21.10

6.10

FUEL LINE VALVES

•Constructed of brass •Provide anti-siphon protection

Order #	Mfg. #	Style	Sugg.Ret.	
SHUT-OFF VALVE				
5903467	033300-10	1/4 FNPT Male/Female	\$38.99	\$20.80
5903468	033301-10	1/4 FNPT Male/Male	39.99	21.40
5903469	033303-10	1/4 FNPT Female/Female	40.99	22.10
THREE-WAY VALVE				
5903470	033302-10	1/4 FNPT	34.99	19.00
5903471	033305-10	1/4 FNPT Valve-Click	34.99	18.95
5903472	033312-10	3/8 FNPT	39.99	21.30
FOUR-WAY VALVE				
5903473	033304-10	1/4 FNPT	37.99	20.30



EPA/CARB LOW PERMEATION

FUEL LINE ASSEMBLY

•Meets requirements for low permeation levels as regulated by Federal & State agencies (EPA & CARB) •OE compatible replacement assembly promotes maximum fuel flow •Assembly uses a compounded, tough & pliable UV-resistant hose •Includes fittings built to OEM specifications for replacement parts •Uses O-ring construction on all fittings for tight, leak-free connections •Incorporates primer bulb with a low permeation rate (<1.5g/m2/day) in all hose construction for maximum fuel flow & prevents back flow

Order #	Mfg. #	Replaces OEM	Sugg.Ret.	
UNIVERSAL				
5903734	034390-10LPA	No. J/E 176667/174513, Mercury 32-822379A	\$51.99	\$26.85
5903732	033389-10LPA	3/8" I.D., 12' Hose	65.99	34.15
5903733	034395-10LPA	5/16" I.D., 80" Hose	53.99	28.00
HONDA				
5903836	034386-10LPA	3/8" I.D.	63.99	32.95
JOHNSON/EVINRUDE				
5903727	034391-10LPA	No. 398549	57.99	30.00
MERCURY 2-PRONG CLIP STYLE, 1998 & NEWER				
5903729	034385-10LPA	No. 32-827927A	59.99	31.10
MERCURY BAYONET-STYLE, CAST ALUMINUM FITTINGS				
5903731	034388-10LPA	No. 32-80188A 2	68.99	35.70
MERCURY/MARINER BAYONET-STYLE TANK CONNECTOR & CLIP-STYLE ENGINE CONNECTOR				
5903728	034399-10LPA	3/8" I.D.	62.99	32.70
YAMAHA				
5903735	034394-10LPA	No. 6Y2-24306-05-00	64.99	33.85



LP PRIMER BULBS

•Gasoline, ethanol & solvent-resistant construction •Stainless steel clamps •Internal check valve to prevent fuel flow back •Meets updated EPA low permeation requirements, effective 1/1/2011

Order #	Mfg. #	Hose Barbs	Sugg.Ret.	
5903723	034790-10LP	1/4"	\$29.99	\$15.30
5903724	034590-10LP	3/8"	30.99	15.75
5903725	034690-10LP	5/16"	30.99	15.75



BATTERY BOXES

•Injection-molded, heavy-grade polyethylene high-strength construction •Corrosion-, chemical- & rust-resistant •Maintains tough properties with nominal 0.220" wall thickness •Complies to industry requirements •Includes hold-down strap

Order #	Mfg. #	Holds	For	Sugg.Ret.	
6032276	042213	One	24 Series	\$13.99	\$6.99
6032277	042214	One	27 or 31 Series	14.99	7.75



NEW!

STRAP BATTERY TRAYS

•Heavy-duty battery tray includes quick release buckle & strap •Strap height: 14.5" •042233: For 24 Series batteries - Dim.: 11.25"Lx7"Wx1.25"H; Holds batteries up to 10.25"Lx6.75"Wx8.12"H •042234: For 27 Series batteries - Dim.: 12.50"Lx7"Wx1.50H; Holds batteries up to 11.75"Lx6.75"Wx7.75"H

Order #	Mfg. #	Style	Sugg.Ret.	
6033631	042233	24 Series	\$8.99	\$4.60
6033632	042234	27 Series	8.99	4.85

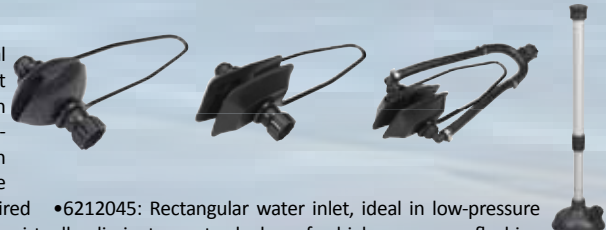


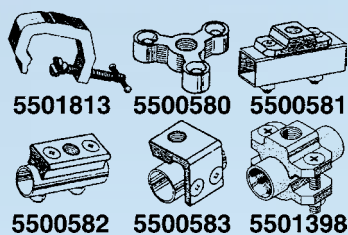
MOTOR FLUSHER

•Quickly removes salt & mineral build-up with simple flush that slips over side water inlets on most IB & OB lower units •Installs in seconds using garden hose •6203409: Round style

•For lower units, no tools required •6212045: Rectangular water inlet, ideal in low-pressure conditions, improved water flow virtually eliminates water leakage for higher-pressure flushing •6215689: Fits 200, 250, 270, 280, & 290 hp lower units •No tools required •6212046: Dual water feed for rectangular water inlets, great for engines 50+HP, improved water flow virtually eliminates water leakage for higher-pressure flushing •6215299: Large cup prevents water blow-by or fall-off turning usage •Telescoping tube allows precise alignment for hard-to-reach areas •No tools required •Installs in minutes

Order #	Mfg. #	Style	Sugg.Ret.	
6203409	099076-00	Round Cup	\$5.99	\$2.60
6212045	099077-00	Universal, Rectangular	7.99	4.10
6215689	099080	Volvo, Round Cup	13.99	7.25
6212046	099082-00	Dual Feed, Rectangular Cup	30.99	15.90
6215299	099081-00	Adjustable Inboard Engine	29.99	16.10





RODHOLDER BASES

•PRO SERIES BASES: 1/2" dia. threaded center hole •Maximum holding power •Interchangeable with all Pro Series rodholders •Accepts lantern holder •LI'L PRO BASES: 3/8" dia. threaded center hole •Accepts LI'L Pro Series rodholders •Will not accept lantern holder •NOTE: Pro Series & LI'L Pro are not interchangeable •Universal Clamp: Opens to 1-7/8" •Star Base: Fits 2" flat surface •1/4" mounting holes •Flat Rail Base: For 1" or wider flat rails or any flat surface •3/16" mounting holes •V-Round Rail Base: V-shape on bottom allows base to be mounted on any size rail or curved surface •3/16" mounting holes •Side Mount Base: Designed for jonboat gunnels where vertical holes cannot be drilled •May be bent to fit most mounting locations •1/4" mounting holes •Round Rail Clamp Base: For 7/8" or 1" dia. rails •Adjustable rod angle •Square Rail Clamp Base: Up to 1-1/4" square rails

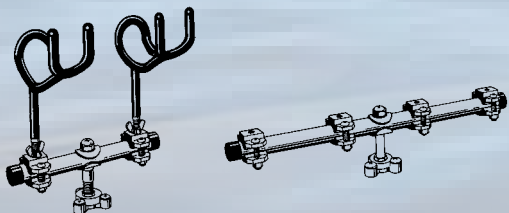
Order #	Mfg. #	Style	Sugg.Ret.	
PRO/PRO GUIDE				
5501813	208-B	Universal Clamp	\$15.99	\$9.45
5500580	200B	Star	7.99	4.80
5503168	200BL	Star - Left Thread	8.99	4.80
5500581	201B	Flat Rail	7.99	4.80
5503223	201BL	Flat Rail - Left Thread	7.99	4.80
5500582	202B	V-Round Rail	7.99	4.80
5500583	203B	Side Mount	7.99	4.80
5501398	204B	7/8" Round Rail Clamp	11.99	7.00
5502231	205-B	1" Round Rail Clamp	11.99	7.00
5503224	205BL	1" Round Rail - Left Thread	11.99	7.00
5502035	206BR	Square Rail Clamp	11.99	6.65
LI'L PRO/LI'L GUIDE				
5502032	218B	Universal Clamp	14.99	9.40
5500871	210B	Star	6.99	4.00
5503169	210BL	Star - Left Thread	6.99	4.00
5500872	211B	Flat Rail	6.99	4.00
5503220	211BL	Flat Rail - Left Thread	6.99	4.00
5501814	212B	V-Round	6.99	4.00
5500873	213B	Side Mount	6.99	4.00
5501628	214B	7/8" Round Rail Clamp	9.99	5.90
5501629	215B	1" Round Rail Clamp	9.99	5.90
5502283	216B	1-1/4" Square Rail Clamp	9.99	5.90
5502036	216BL	Square Rail Clamp	9.99	5.90



TROLLING BAR

•18" tall, 24" wide •Allows unlimited rod angle adjustment •Includes 3" square mounting base and (4) 214-B clamp bases

Order #	Mfg. #	Sugg.Ret.	
5503282	T250	\$91.99	\$54.30
BAR w/(4) 210-H LI'L PRO ROD HOLDERS			
5503472	T-250-H	152.99	92.55



ROD HOLDER TROLLING BARS

•Fully adjustable for fishing multiple rods •Full horizontal & vertical adjustment •Stem-lock sprocket locks T-Bar in 12 horizontal positions

Order #	Mfg. #	Style	Sugg.Ret.	
5502232	T009H	9" w/Rod Holders	\$78.99	\$46.70
5502233	T118	24" w/o Rod Holders, Base	66.99	39.35
FLAT BAR				
5502235	FT18	18" w/o Rod Holders, Base	42.99	24.70

PRO SERIES "DUO" ROD HOLDER

•2 position rod holder •For drift fishing or trolling •Holds rod at 0° or 30°

Order #	Mfg. #	Stem Dia.	Sugg.Ret.	
5502302	255-H	1/2"	\$26.99	\$15.90
LEFT THREADS				
5503221	255HL	1/2"	26.99	15.90



PRO SERIES

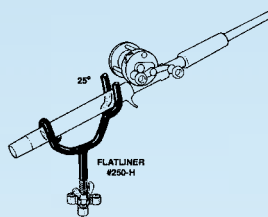
FLATLINER ROD HOLDER WITHOUT BASE

•Holds rod tip at 25° angle •For straight down fishing or where bait is cast away from boat, such as flat-lining (free-lining) or corks fishing

•Stem Dia.: 1/2" •Stem Lng.: 4"

5501806 250H

Sugg.Ret. \$22.99

\$13.20

PRO SERIES

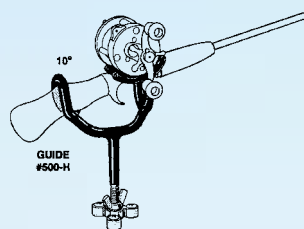
GUIDE ROD HOLDER

WITHOUT BASE

•Holds any style rod or cane pole •Cradles & cushions sideplates of today's high-tech casting reels •Holds most rods at 0° when only handle is inserted, will hold casting reels at 10° when sideplates are placed in cradle •Stem Dia.: 1/2" •Stem Lng.: 4"

5501187 500H

Sugg.Ret. \$24.99

\$14.50

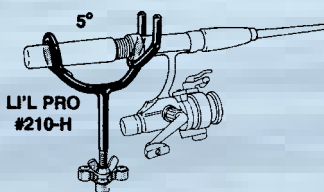
LI'L PRO SERIES

LEAN GREEN ROD HOLDER

•Rod holder only •Functional "no frills" design •Quality, durability & performance •3/8" dia. stem •Holds rod at 20°

5502303 100-H

Sugg.Ret. \$11.99

\$7.20

LI'L PRO SERIES

PRO ROD HOLDER

•Holds rod tip at a 5° angle, keeps long pole tips from dipping into the water •Favorite in crappie tournaments for trolling jigs

Order #	Mfg. #	Stem Dia.	Stem Lng.	Sugg.Ret.	
5501809	210-H	3/8"	4"	\$16.99	\$9.70
5502033	210HL	3/8"	4"	16.99	9.70
5501815	2108-H	3/8"	8"	20.99	12.40

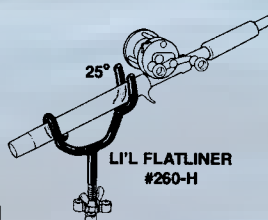
LI'L PRO SERIES

FLATLINER ROD HOLDER

•Holds rod tip at 25° angle •Good on bass & jonboats with low sides

•Keeps rod tip out of water. For straight down fishing or where the bait is cast away from the boat, such as flat-lining (free-lining) or corks fishing

Order #	Mfg. #	Stem Dia.	Stem Lng.	Sugg.Ret.	
5501810	260-H	3/8"	4"	\$16.99	\$9.70
5502034	260HL	3/8"	4"	16.99	9.70



TWISTED NYLON

DOCK & MOORING LINE

•3-strand, 4-stage rope •100% nylon w/optimum specifications for handling, stretch, shock absorption & abrasion resistance •12" eye splice

Order #	Mfg. #	Size	Color	Sugg.Ret.	
5405677	20-11210	3/8"x10'	White	\$6.99	\$3.15
5404556	20-11215	3/8"x15'	White	9.99	3.95
5404559	20-11220	3/8"x20'	White	10.99	4.80
5404561	20-11225	3/8"x25'	White	12.99	6.10
5404562	20-11615	1/2"x15'	White	12.99	5.95
5404563	20-11620	1/2"x20'	White	15.99	7.85
5404564	20-11625	1/2"x25'	White	19.99	9.55
5404566	20-12020	5/8"x20'	White	29.99	15.25
5404567	20-12025	5/8"x25'	White	30.99	15.99
5404569	20-21544	3/8"x15'	Black	11.99	5.75
5404570	20-22544	3/8"x25'	Black	16.99	8.40
5404571	20-61544	1/2"x15'	Black	19.99	9.60
5404572	20-62544	1/2"x25'	Black	28.99	14.65
5404959	20-21588	3/8"x15'	Navy Blue	11.99	5.75
5404960	20-22088	3/8"x20'	Navy Blue	13.99	7.10
5404962	20-62588	1/2"x25'	Navy Blue	27.99	14.35



PREMIUM TWISTED NYLON

MOORING & DOCK LINE

•3-strand, 4-stage medium-lay nylon dock line •12" eye splice •High-abrasion resistance •White w/single blue strand

Order #	Mfg. #	Size	Sugg.Ret.	
5405362	21-51215	3/8"x15'	\$10.99	\$5.30
5405363	21-51220	3/8"x20'	12.99	6.25
5405364	21-51225	3/8"x25'	13.99	7.20
5405365	21-51615	1/2"x15'	15.99	8.15
5405366	21-51620	1/2"x20'	20.99	10.30
5405367	21-51625	1/2"x25'	23.99	12.35



PREMIUM WHITE TWISTED NYLON ANCHOR LINE

•4-stage, 3-strand, medium lay nylon anchor line •Spliced-in hot dipped, nylon thimble on one end & heat-sealed on the other end •High-abrasion resistance

•Extra strong to handle shock loads while protecting boat

Order #	Mfg. #	Size	Sugg.Ret.	
5405370	21-51250	3/8"x50'	\$25.99	\$13.75
5405371	21-12100	3/8"x100'	45.99	24.20
5405372	21-12150	3/8"x150'	69.99	36.40
5405373	21-16100	1/2"x100'	80.99	42.20
5405374	21-16150	1/2"x150'	116.99	61.55



WHITE TWISTED NYLON ANCHOR LINE

•3-strand, 4-stage, 100% nylon with optimum specifications for handling, stretch, shock absorption and abrasion resistance •Anchor lines should be 7 to 8 times the water depth •Galvanized thimbles •Packaged on a paper spool

Order #	Mfg. #	Size	Sugg.Ret.	
5404586	20-20500	3/8"x50'	\$22.99	\$11.45
5404587	20-21000	3/8"x100'	33.99	17.25
5404588	20-21500	3/8"x150'	57.99	30.15
5404589	20-22000	3/8"x200'	78.99	40.95
5404590	20-61000	1/2"x100'	66.99	34.20
5404591	20-61500	1/2"x150'	97.99	51.35
5404592	20-62000	1/2"x200'	133.99	70.20
5404598	20-62500	1/2"x250'	173.99	90.90
5404600	20-02500	5/8"x250'	276.99	146.40



WHITE TWISTED NYLON ROPE-REELS

•High strength, 3-strand, 4-stage 100% nylon •Absorbs shock loads, holds knots well •Resistant to abrasion, rot, mildew, oil, grease & most chemicals

Order #	Mfg. #	Size	Sugg.Ret.	
5404601	20-08006	1/4"x600'	\$90.99	\$47.30
5404993	20-12300	3/8"x300'	85.99	45.35
5404604	20-12006	3/8"x600'	174.99	90.65
5404606	20-16300	1/2"x300'	151.99	80.75
5404607	20-16006	1/2"x600'	306.99	161.45
5404609	20-20300	5/8"x300'	254.99	133.95





DIGI-TROLL 5

DOWNRIGGER

- Vertical, easy access spool
- Improved switch & connector location
- Boom post 2.5x stronger
- Design reduces cable jump of pulley
- Stronger glass-filled polypropylene frame
- Electronics are fully enclosed & protected
- O-ring gasket assures a watertight housing
- Re-engineered electric motor makes downrigger significantly quieter
- Modular design motor housing can be removed easily to allow easy access to components
- Easily accessible spool
- 250' per minute cable retrieval rate
- Short-Stop feature
- Adjustable PIC (Positive Ion Control)
- LCD keypad w/easy-to-navigate menu
- Keypad controlled up/down (1 speed)
- Soft Start/Stop
- Digital line counter
- Compatible w/CannonLink™ Fishing system
- 24"-53" black telescopic boom
- Redesigned dual axis rod holder w/unique ratcheting system for quick angle changes
- Rod holders can rotate 360°
- Dual rear rod holder
- 400' of SS cable
- Universal line release (2)
- Plastic spool
- Self sealing power cord connection
- Black swivel base
- Stronger mounting base & hardware
- Slide frame into base & secure front knob
- Single terminator
- Improved ball storage hook
- Power loss crank handle included

5503624 1902315

Sugg.Ret. \$899.99



\$663.86

DIGI-TROLL 5TS

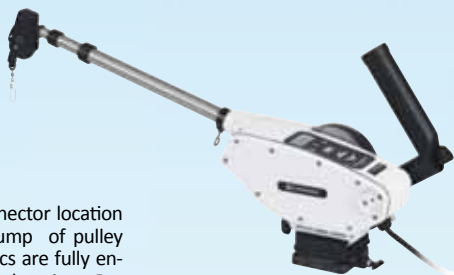
TOURNAMENT SERIES

DOWNRIGGER

- Vertical, easy access spool
- Improved switch & connector location
- Boom post 2.5x stronger
- Design reduces cable jump of pulley
- Stronger glass-filled polypropylene frame
- Electronics are fully enclosed & protected
- O-ring gasket assures a watertight housing
- Re-engineered electric motor makes downrigger significantly quieter
- Modular design motor housing can be removed easily to allow easy access to components
- Easily accessible spool
- 250' per minute cable retrieval rate
- Short-Stop feature
- Adjustable PIC (Positive Ion Control)
- LCD keypad w/easy-to-navigate menu
- Keypad controlled up/down (1 speed)
- Soft Start/Stop
- Digital line counter (non-backlit)
- Compatible w/CannonLink™ Fishing system
- 24"-53" SS telescopic boom
- Redesigned dual axis rod holder w/unique ratcheting system for quick angle changes
- Rod holders can rotate 360°
- Single rear rod holder
- 400' of SS cable
- Offshore saltwater line release (2)
- SS spool
- Self sealing power cord connection
- Black swivel base
- Stronger mounting base & hardware
- Slide frame into base & secure front knob
- Single terminator
- Improved ball storage hook
- Power loss crank handle included

5503625 1902320

Sugg.Ret. \$1,099.99



\$836.48

DIGI-TROLL 10

DOWNRIGGER

- Vertical, easy access spool
- Improved switch & connector location
- Design reduces cable jump of pulley
- Stronger glass-filled polypropylene frame
- Electronics are fully enclosed & protected
- O-ring gasket assures a watertight housing
- Re-engineered electric motor makes downrigger significantly quieter
- Modular design motor housing can be removed easily to allow easy access to components
- Easily accessible spool
- 250' per minute cable retrieval rate
- Short-Stop feature
- Adjustable PIC (Positive Ion Control)
- LCD keypad w/easy-to-navigate menu
- Keypad & software controls up/down (variable speed for both, 1-5 setting)
- Screen can be integrated with Cannon's IntelliTroll™ speed, depth & temp sensor
- Can be programmed to cycle between different depths or track bottom contours, all directly from the downrigger
- Soft Start/Stop
- Backlit digital line counter
- Memory storage to remember up to 5 different depth settings
- Sonar display
- Bottom tracking mode (ability to network up to 6 Mag 20, Dig-Troll 5 or Digi-Troll 10)
- Compatible w/CannonLink™ Fishing system
- 24"-53" black telescopic boom
- Redesigned dual axis rod holder w/unique ratcheting system for quick angle changes
- Rod holders can rotate 360°
- Dual rear rod holder
- 400' of SS cable
- Universal line release (2)
- Plastic spool
- Self sealing power cord connection
- Black swivel base
- Stronger mounting base & hardware
- Slide frame into base & secure front knob
- Single terminator
- Improved ball storage hook
- Power loss crank handle included

5503626 1902325

Sugg.Ret. \$1,399.99



\$1032.68

DIGI-TROLL 10TS

TOURNAMENT SERIES

DOWNRIGGER

- Vertical, easy access spool
- Improved switch & connector location
- Boom post 2.5x stronger
- Design reduces cable jump of pulley
- Stronger glass-filled polypropylene frame
- Electronics are fully enclosed & protected
- O-ring gasket assures a watertight housing
- Re-engineered electric motor makes downrigger significantly quieter
- Modular design motor housing can be removed easily to allow easy access to components
- Easily accessible spool
- 250' per minute cable retrieval rate
- Short-Stop feature
- Adjustable PIC (Positive Ion Control)
- LCD keypad w/easy-to-navigate menu
- Keypad & software controls up/down (variable speed for both, 1-5 setting)
- Screen can be integrated with Cannon's IntelliTroll™ speed, depth & temp sensor
- Can be programmed to cycle between different depths or track bottom contours, all directly from the downrigger
- Soft Start/Stop
- Backlit digital line counter
- Memory storage to remember up to 5 different depth settings
- Sonar display
- Bottom tracking mode (ability to network up to 6 Mag 20, Dig-Troll 5 or Digi-Troll 10)
- Compatible w/CannonLink™ Fishing system
- 24"-53" SS telescopic boom
- Redesigned dual axis rod holder w/unique ratcheting system for quick angle changes
- Rod holders can rotate 360°
- Single rear rod holder
- 400' of SS cable
- Universal line release (2)
- SS spool
- Self sealing power cord connection
- Tilt-Up Boom
- Black swivel base
- Stronger mounting base & hardware
- Slide frame into base & secure front knob
- Single terminator
- Improved ball storage hook
- Power loss crank handle included

5503627 1902330

Sugg.Ret. \$1,499.99



\$1140.66

DIGI-TROLL IV HS

DOWNRIGGER

5503193 1902000

Sugg.Ret. \$1399.99



\$1032.68

MAGNUM 5ST

DOWNRIGGER

- Vertical, easy access spool
- Improved switch & connector location
- Boom post 2.5x stronger
- Design reduces cable jump of pulley
- Stronger glass-filled polypropylene frame
- Electronics are fully enclosed and protected
- O-ring gasket assures a watertight housing
- Re-engineered electric motor makes downrigger significantly quieter
- Modular design motor housing can be removed easily to allow easy access to components
- Easily accessible spool
- 250' per minute cable retrieval rate
- Short-Stop feature
- Fixed Positive Ion Control (.6vdc)
- Toggle switch control
- Auto Up function
- Mechanical line counter
- 24" fixed boom
- Redesigned dual axis rod holder w/unique ratcheting system for quick angle changes
- Rod holders can rotate 360°
- Single rear rod holder
- 250' of SS cable
- Universal line release (1)
- Plastic spool
- Self sealing power cord connection
- Stronger mounting base & hardware
- Fixed base
- Slide frame into base & secure front knob
- Single terminator
- Improved ball storage hook
- Power loss crank handle included

5503621 1902300

Sugg.Ret. \$399.99



\$343.25

MAGNUM 10STX

DOWNRIGGER

- Vertical, easy access spool
- Improved switch & connector location
- Boom post 2.5x stronger
- Design reduces cable jump of pulley
- Stronger glass-filled polypropylene frame
- Electronics are fully enclosed and protected
- O-ring gasket assures a watertight housing
- Re-engineered electric motor makes downrigger significantly quieter
- Modular design motor housing can be removed easily to allow easy access to components
- Easily accessible spool
- 250' per minute cable retrieval rate
- Short-Stop feature
- Fixed Positive Ion Control (.6vdc)
- Toggle switch control
- Auto Up function
- Mechanical line counter
- 24"-53" telescopic boom
- Black swivel base
- Redesigned dual axis rod holder w/unique ratcheting system for quick angle changes
- Rod holders can rotate 360°
- Single rear rod holder
- 250' of SS cable
- Universal line release (1)
- Plastic spool
- Self sealing power cord connection
- Stronger mounting base & hardware
- Slide frame into base & secure front knob
- Single terminator
- Improved ball storage hook
- Power loss crank handle included

5503622 1902305

Sugg.Ret. \$549.99



\$471.98

MAGNUM 10STX TS

TOURNAMENT SERIES

DOWNRIGGER

- Vertical, easy access spool
- Improved switch & connector location
- Boom post 2.5x stronger
- Design reduces cable jump of pulley
- Stronger glass-filled polypropylene frame
- Electronics are fully enclosed & protected
- O-ring gasket assures a watertight housing
- Re-engineered electric motor makes downrigger significantly quieter
- Modular design motor housing can be removed easily to allow easy access to components
- Easily accessible spool
- 250' per minute cable retrieval rate
- Short-Stop feature
- Fixed Positive Ion Control (.6vdc)
- Toggle switch controlled up/down
- Auto Up feature
- Mechanical line counter
- 24"-53" telescopic stainless steel boom
- Black swivel base
- Redesigned dual axis rod holder w/unique ratcheting system for quick angle changes
- Single rear rod holder
- 250' of SS cable
- Offshore saltwater line release (1)
- Stainless steel spool
- Self sealing power cord connection
- Stronger mounting base & hardware
- Slide frame into base & secure front knob
- Single terminator
- Improved ball storage hook
- Power loss crank handle included

5503623 1902310

Sugg.Ret. \$799.99



\$675.94

MINI-TROLL

PORTABLE

DOWNRIGGER

- Portable, manual downrigger for saltwater or freshwater use
- Features: Lexan® frame; integral 2-1/2" C-clamp base; horizontal cable reel w/handle and manual brake; 100 ft./120 lb test SS cable; snap-on terminator

5503182 1901200

Sugg.Ret. \$69.99



\$62.66

MINI-TROLL™

ACCESSORY PACK

- Includes: 4 lb. flash weight, rod holder & Uni-Line release

5500613 2250005

Sugg.Ret. \$56.99



\$39.03

Ellett Brothers®
267 Columbia Ave • PO Box 128
Chapin, South Carolina
29036

www.ellettbrothers.com

CHANGE SERVICE
REQUESTED



Scan with your
smartphone to access

Postmaster Please Deliver Between: 01/28/14 - 01/31/14

PRSR STD
U.S. POSTAGE
PAID
CHARLESTON, SC
PERMIT NO.
1193

Prices in this publication are subject to change without notice. Any terms quoted are subject to prior credit approval. We are not responsible for errors in printing as a result of typing/proofing or misinformation of products supplied by the manufacturers. Only the warranties supplied by the manufacturers of the products listed are offered. Some products in this publication are dangerous; misuse or careless use may cause serious injury or death. The purchaser/user should carefully read and follow the manufacturer's instructions. Due to time involved in the preparation, printing and mailing of this publication, as well as pending legislation of the demand for certain products, availability of some items may be limited. We are making every effort to provide you with the products advertised. We appreciate your patience and your business.

© Ellett Brothers, LLC - 2014

NOTICE: Even though the US Postal Service says they deliver bulk mail on a timely basis, we find there are delays. One avenue that seems to provide results is the use of the US Postal Service Form PS 4314 Consumer Service Card. If your copy of the Ellett Brothers® Flyer is arriving late, go to your local post office and fill out the Consumer Service Card. Earlier cases have had positive results.

Thank You, Ellett Brothers®

Raymarine®

NEW!

DRAGONFLY™ SONAR/GPS

- CHIRP powered Dual Channel sonar
- High resolution, photo like imagery of bottom structure using CHIRP DownVision™
- View structure images & target fish w/CHIRP sonar simultaneously using dual sonar mode
- Dual-beam CHIRP transducer with a wide 60"x1.4" fan beam for DownVision™ imagery plus a conical 25° beam for targeting fish
- Down-Vision™ & sonar images down to 600'
- High accuracy temp sensor built into transducer
- Built-in 50 channel GPS sensor w/fast-acquisition technology
- Simple user interface for easy access to menu options & display choices - simple 3-button control
- 5.7" Ultra-bright 1500 nit optically bonded sunlight display for max readability in all conditions
- Tilt/Swivel quick-release drop-in base can be secured w/optional Thule lock core for added security

Order #	Mfg. #	Model	Sugg.Ret.
5027332	E70085-SLV	w/Navionics® Silver US Coastal & Lake Charts	\$669.99
5027354	E70085-GLD	w/Navionics® Gold Charts	719.99
Order #	Mfg. #	Type	Sugg.Ret.

ACCESSORIES

5027333	A80223	Flush Mt. Kit	\$19.99
5027334	A80206	Carrier Pouch	24.99
5027335	R70134	Sun Cover	14.99
5027337	A80207	Trans. Trolling Mtr. Bracket	24.99
5027336	R70135	Mounting Bracket Kit (Spare)	19.99

TRANSDUCERS

5027338	A80195	CPT-60 Transom Mt.	89.99
---------	--------	--------------------	-------



NEW FEATURE

RAY 49 V2 VHF

- Upgraded DSC capabilities - fully compliant
- Compact, rugged, submersible (IPX7) & reliable
- Easy-to-use rotary controls for volume, squelch & menu operation
- Large 7-segment, backlight LCD display
- Standard microphone includes integrated controls for channel selection as well as a built-in speaker
- Class D Digital Selective Calling with a built-in DSC distress key for 1 touch digital broadcast of your boat's GPS position & digital mayday
- 25 watts of transmitter power
- Receiver w/excellent noise rejection, best-in-class audio output and a standard external speaker connection
- 4 Scan modes as well as NOAA weather alert & programmable scanning are all included
- Sun cover, yoke mounting bracket, power/speaker/data cable, mounting hardware & instructions included
- Grey

5103512 E70101
Sugg.Ret. \$249.99

\$199.00



RAY 49 V2 VHF



RAY 55 VHF

RAY 55 VHF

- Class D DSC (Digital Selective Calling) transceiver
- DSC Distress key transmits GPS position and a digital mayday
- NOAA weather alert
- NMEA 0183 input w/GPS position, COG & SOG display
- Chartplotter position polling using NMEA 0183 output
- Easy-to-use rotary controls for channel, volume, squelch & menu operation
- Extra large dot matrix LCD
- Speaker microphone w/ controls & remote mount option
- Dual Channel Display (2UP Mode) displays active channel & stand-by channel
- Programmable favorite channel soft keys (1UP Mode)
- Quick access 16/9 key
- 4 Scan Modes: All Scan, Saved (Memory) Scan, Priority All Scan and Priority Saved Scan
- Submersible (IPX7 Standard)
- Superior receiver w/excellent intermodulation rejection
- Rugged housing
- Optional Raymic remote station handset serves as a full function second station
- Raymic enables intercom capabilities between RAY 55 and Raymic at a remote station

5102786 E43036
Sugg.Ret. \$269.99

\$219.00

GPS Speed

9.8 _{k_t}

GPS Hdg

241 _{°M}

Depth

64.6 _{f_t}

Temp

76.6 _{°F}

1.8 _{mph}