



WRAPTOR[™]

WIRE ID PRINTER APPLICATOR



User's Guide

www.bradyid.com/wraptor

Copyright

This guide is copyrighted with all rights reserved. No portion of this guide may be copied or reproduced by any means without the prior written consent of Brady Worldwide, Inc.

While every precaution has been taken in the preparation of this document, Brady assumes no liability to any party for any loss or damage caused by errors or omissions or by statements resulting from negligence, accident, or any other cause. Brady further assumes no liability arising out of the application or use of any product or system described, herein; nor any liability for incidental or consequential damages arising from the use of this document. Brady disclaims all warranties of merchantability of fitness for a particular purpose.

Trademarks

*Wraptor*TM and *LabelMark*TM (hereafter “*Wraptor*” and “*LabelMark*”) are trademarks of Brady Worldwide, Inc.

Microsoft and Windows are registered trademarks of Microsoft Corporation.

Brady reserves the right to make changes without further notice to any product or system described herein to improve reliability, function, or design.

© 2004 Brady Worldwide, Inc. All Rights Reserved

Revision A, 03/2004

Wraptor Utility Menu and *Control Menu* software version: 1.0

Brady Worldwide, Inc.
6555 West Good Hope Road
P.O. Box 2131
Milwaukee, WI 53201

Main Switchboard:	(800) 541-1686 (414) 358-6600
FAX:	(800) 292-2289
Sales/Customer Service:	(800) 537- 8791

Regulatory Information

CAUTION: The user is cautioned that any changes or modifications not expressly approved by Brady Worldwide, Inc. could void the user's authority to use the equipment.

Note: This equipment has been tested and found to comply with the limits for a Class A digital device, pursuant to part 15 of the FCC Rules. These limits are designed to provide reasonable protection against harmful interference when the equipment is operated in a commercial environment. This equipment generates, uses, and can radiate radio frequency energy and, if not installed and used in accordance with the instruction guide, may cause harmful interference to radio communications. Operation of this equipment in a residential area is likely to cause harmful interference in which case the user will be required to correct the interference at his own expense.

This Class A digital apparatus meets all requirements of the Canadian Interference-Causing Equipment Regulations.

Cet appareil numérique de la classe A respecte toutes les exigences du Règlement sur le matériel brouilleur du Canada.

This is a Class A product. In a domestic environment this product may cause radio interference, in which case the user may be required to take adequate measures.

Éste es un aparato de la clase A y podría provocar interferencias de radio en un entorno doméstico, en cuyo caso el propietario tendría que tomar las medidas oportunas.

Il s'agit d'un produit de Classe A. Dans un environnement domestique, ce produit est susceptible de provoquer des interférences radio, auquel cas l'utilisateur peut se voir obligé de prendre les mesures appropriées.

Brady Warranty

Our products are sold with the understanding that the buyer will test them in actual use and determine for him or herself their adaptability to his/her intended uses. Brady warrants to the buyer that its products are free from defects in material and workmanship, but limits its obligations under this warranty to replacement of the product shown to Brady's satisfaction to have been defective at the time Brady sold it. This warranty does not extend to any persons obtaining the product from the buyer.

THIS WARRANTY IS IN LIEU OF ANY OTHER WARRANTY, EXPRESS OR IMPLIED INCLUDING, BUT NOT LIMITED TO ANY IMPLIED WARRANTY OF MERCHANTABILITY OR FITNESS FOR A PARTICULAR PURPOSE, AND OF ANY OTHER OBLIGATIONS OR LIABILITY ON BRADY'S PART. UNDER NO CIRCUMSTANCES WILL BRADY BE LIABLE FOR ANY LOSS, DAMAGE, EXPENSE OR CONSEQUENTIAL DAMAGES OF ANY KIND ARISING IN CONNECTION WITH THE USE, OR INABILITY TO USE, BRADY'S PRODUCTS.

Technical Support

Choose one of the following options to contact system support provided by Brady Corporation:

U.S. and Canada

Phone: (800) 643-8766, Monday - Friday 7:00 a.m. - 6:00 p.m. (CST).

Fax: (414) 358-6767.

E-Mail: tech_support@bradycorp.com.

Assistance is available 24 hours per day / 7 days per week. Go to: www.bradyid.com, and then select **Knowledge Base** from the left-hand panel.

Belgium / Luxembourg / The Netherlands

Phone: +32 52 457 937

Fax: +32 52 457 800

E-Mail: tsbelgium@bradycorp.com

Italy

Phone: +39 02 96 28 60 14

Fax: +39 02 96 70 08 82

E-Mail: tsitaly@bradycorp.com

UK / Ireland

Phone: +44 1295 228 205

Fax: +44 1295 27 17 55

E-Mail: tsuk@bradycorp.com

Mexico

Phone: 01 800 112 7239

Fax: 52 55 5527 55 86

E-Mail: bradymexico@bradycorp.com

Latin America & Caribbean

Phone: (414) 438-6868

Fax: (414) 438-6870

E-Mail: bradyintl@bradycorp.com

Spain

Phone: +33 437 245 234

Fax: +33 472 74 45 54

E-Mail: tsspain@bradycorp.com

France

Phone: +33 169.296 717

+800 907 107

Fax: +33 169 296 718

E-Mail: tsfrance@bradycorp.com

Germany / Austria / Switzerland

Phone: +49 6103 75 98 451

Fax: +49 6103 7598 670

E-Mail: tsgermany@bradycorp.com

Sweden / Norway / Finland

Phone: 46 85 90 057 33

Fax: 46 85 90 818 68

E-Mail: tssweden@bradycorp.com

Brazil

Phone: 55 11 3604 7729/7715

Fax: 55 11 3686-5236

E-Mail: brady_service_brazil@bradycorp.com

Africa

Denmark

Israel

Middle East

Turkey

Phone: +32 52 457 937

Fax: +32 52 457 800

E-Mail: tsbelgium@bradycorp.com

Eastern Europe

Greece

Portugal

Malta

Russia

Table of Contents

Chapter 1 Introduction.....	1
1.1 INTRODUCING THE WRAPTOR	1
1.2 REGISTRATION	1
1.3 ABOUT THE USER'S GUIDE	1
1.4 TECHNICAL SPECIFICATIONS	2
1.4.1 Physical Dimensions	2
1.4.2 Environmental Ranges	2
1.4.3 Materials Storage Specifications	2
1.4.4 Electrical Specifications	2
1.4.5 Power Cord Specifications	2
1.4.6 System Requirements	3
Chapter 2 Safety.....	4
2.1 AUTOMATIC STOPS	4
2.1.1 Front Door	4
2.1.2 Side Door	4
2.2 ELECTRICAL SAFETY	5
2.3 WARNING LABELS	5
Chapter 3 Component Locations.....	6
3.1 EXTERNAL PARTS.....	6
Chapter 4 Installation and Preparation.....	8
4.1 INITIAL SETUP	8
4.1.1 Unpack and Setup the Wraptor Unit.....	8
4.1.2 Load Software on the Computer and Connect Wraptor	10
4.1.3 Power Up the Wraptor	16
4.2 LOAD LABEL MATERIAL	17
4.3 LOAD THE PRINTER RIBBON	23
Chapter 5 General Operation	26
5.1 CREATING, PRINTING AND WRAPPING LABELS	26
5.1.1 Wrap Quality.....	27
5.1.2 Print details.....	28
5.1.3 Managing print files.....	28
5.2 USING THE TOUCH SCREEN.....	28
5.3 THE WRAPTOR CONTROL PANEL.....	29
5.3.1 File Tab Commands.....	29
5.3.2 Run Tab Commands.....	31
5.3.3 Setup Tab Commands	33
5.3.4 Adj Tab Commands.....	34
5.3.5 Config Tab Commands	36
5.3.6 IP Tab Commands.....	37
5.4 THE WRAPTOR UTILITY MENU	41
5.4.1 Run Command.....	41
5.4.2 Calibrate Touch Screen Command.....	41
5.4.3 Set Language Command.....	42
5.4.4 Upgrade System Command.....	43
5.5 POWER OFF	43
Chapter 6 The File Management Utility	44
6.1 LAUNCHING THE FILE MANAGEMENT UTILITY	44
6.2 ESTABLISHING COMMUNICATION	44
6.3 FILE MANAGEMENT UTILITY OPTIONS.....	45
6.3.1 Transfer Files TO Printer	46

6.3.2	<i>Transfer Files FROM Printer</i>	47
6.3.3	<i>Manage Printer Files</i>	48
6.3.4	<i>Upgrade Printer Files</i>	49
Chapter 7	Maintenance	50
7.1	CLEANING	50
7.1.1	<i>Before You Begin</i>	50
7.1.2	<i>Cleaning the Wrapper Surface</i>	51
7.1.3	<i>Cleaning the Printhead</i>	52
7.1.4	<i>Cleaning the Rollers</i>	53
7.1.5	<i>Cleaning the V-Roller</i>	54
7.1.6	<i>Cleaning the Sensors</i>	54
7.2	LUBRICATION	57
7.2.1	<i>Oiling the Slide Track</i>	57
7.2.2	<i>Clean and Re-grease the Wrapper Hub</i>	58
7.3	REPLACE WRAPPER FOAM V-BLOCK	59
7.4	REPLACE PRINTHEAD ASSEMBLY	59
Chapter 8	Error Messages	61
Chapter 9	Accessories Parts List	65
9.1	CONSUMABLE MATERIAL	65
9.2	ACCESSORIES	65

Table of Figures

Figure 1.	Hazardous Moving Parts Label—Front of Unit	5
Figure 2.	Hazardous Moving Parts Label—Inside Cover	5
Figure 3.	External Parts—Front	6
Figure 4.	External Parts—Back	7
Figure 5.	Wraptor Installation Menu	11
Figure 6.	Wraptor Control Panel	16
Figure 7.	Material Path Parts	17
Figure 8.	Wraptor with Side Door Open	18
Figure 9.	Ribbon Path Parts	23
Figure 10.	Wraptor with Side Door Open	24
Figure 11.	Wraptor Control Panel on the Touch Screen	29
Figure 12.	File Tab Menu	29
Figure 13.	Label Mismatch Warning Message	30
Figure 14.	Run Tab Menu	31
Figure 15.	Goto... Dialog	32
Figure 16.	Setup Tab Menu	33
Figure 17.	Adj Tab Menu	34
Figure 18.	Advanced Settings Menu	35
Figure 19.	System Information	36
Figure 20.	Config Tab Menu	36
Figure 21.	IP Tab Menu	37
Figure 22.	Touch Screen Keyboard Dialog	39
Figure 23.	DNS/WINS Server Address Entry	39
Figure 24.	Fixed IP Address Entry	39
Figure 25.	IP Number Keypad	40
Figure 26.	Default Gateway Entry	40
Figure 27.	Wraptor Utility Menu	41
Figure 28.	Contrast Control Knob	41
Figure 29.	Set Language Utility	42
Figure 30.	File Management Utility Main Menu	44
Figure 31.	File Management Utility Communication Successful	45
Figure 32.	Clean Wrapper Surface	51
Figure 33.	Clean Printhead	52
Figure 34.	Clean Rollers	53
Figure 35.	Clean V-Rollers	54
Figure 36.	Clean Label Notch Sensor	54
Figure 37.	Wrapper and Shuttle Home Sensors	55
Figure 38.	Tilt and Ribbon Out Sensors	56
Figure 39.	Oil Slide Track	57
Figure 40.	Clean and Grease Wrapper Hub	58

Chapter 1 Introduction

This section contains introductory information on the *Wraptor™*, including specifications. It also provides information about the User's Guide.

1.1 Introducing the Wraptor

The *Wraptor™* is a semi-automatic computerized system that integrates the print-and-apply processes used for labeling wire and cable. You design labels on your computer using Brady's *LabelMark™* software, included with your unit. You then transfer the labels to the *Wraptor* for printing and wrapping on a variety of wires and cables.

For instructions on general use, please see *Creating, printing and wrapping labels* on page 26 of this guide.

The *Wraptor* can be run in either local or remote mode. This guide describes how to run *Wraptor* in local mode. For details on programming the *Wraptor* for remote operation, please refer to the *Wraptor Programmer's Guide*.

1.2 Registration

Please register your Wraptor online at www.bradyid.com/productregistration. Your Wraptor must be registered within 30 days to validate warranty and machine support.

1.3 About the User's Guide

A printable version of the *Wraptor User's Guide* in Adobe PDF format is available from the Wraptor CD Installation Menu. ***See Insert the Wraptor CD, page 11 of this guide.***

The *User's Guide* contains information on the features, functions and operation of the *Wraptor*. For information on using *LabelMark* software, please refer to the *LabelMark User's Guide*.

Read the *Safety* information starting on page 4 prior to setting up or operating the *Wraptor*. It contains information necessary for the safe operation of the unit. Important information contained in this guide is marked as follows:



WARNING: Impending Danger!
May cause death or physical injury.



CAUTION: Dangerous Situation!
May cause equipment/material damage or data loss.



NOTE: Helpful additional information and tips
for use.

1.4 Technical Specifications

The *Wraptor* has the following specifications:

- 300 dots per inch (11.8 dots per mm) print resolution
- 1.75 inches per second (44.45 mm per second) print speed
- The following wrap speeds:
 - 4 seconds (apply only)
 - 4.5 seconds (wrap and apply)
- Accommodates wires between 0.060" (1.524 mm) min. and 0.600" max. (15.24 mm) without adjustment
- Supports labels up to 2" (50.8 mm) wide
- Support for labels from 0.75" (19.05 mm) min. to 3.0" (76.2 mm) max. height. (1.625" max. printable height)
- One-year Warranty
- Accepts CompactFlash Memory Cards for added storage capability and standalone operation

1.4.1 Physical Dimensions

Physical	Metric Units	U.S. Units
Dimensions (width, height, depth)	381 x 458 x 572 mm	15 x 18 x 22.5 in
Weight	36 kg	80 lb

1.4.2 Environmental Ranges

Environmental	Operation	Storage
Temperature*	50 to 105°F (10 to 41°C)	0 to 140°F (-18 to 60°C)
Relative Humidity	20 to 80% non-condensing	10 to 95% non-condensing

*Exposing the *Wraptor* to direct sunlight is not recommended.

1.4.3 Materials Storage Specifications



CAUTION: Consumable material for use with this unit must be stored in its original packaging in an environment in which the temperature is *below* 80°F and 60% Relative Humidity.

1.4.4 Electrical Specifications

Input Voltage	100 - 240 V~
Current	2A
Frequency	50/60 Hz

1.4.5 Power Cord Specifications

Users in countries outside of North America may be required to supply their own power cord for connecting the system to an AC electrical outlet. Choose an AC power cord and plug that is suitable for the country in which the equipment is to be installed. The AC power cord and plug must meet all national regulations and requirements for that intended country.

The table below shows the specifications for the power cord to be used in various countries:

In this country:	Use this power cord:
Sweden, Denmark, Norway, Finland, Holland, Switzerland, Austria, Germany, Italy, Belgium, France, Spain, Portugal, Hungary	Specifications plug: CEE-7 connector: IEC 320 conductor size: 3 x 1.00 mm ² description: H05VVF3G1.0 typ. stranding: 32/0.2 mm current rating: 10A voltage rating: 250 VAC maximum length: less than 3 meters
United Kingdom, Ireland, South Africa	Specifications plug: BS 1363A connector: IEC 320 conductor size: 3 x 1.00 mm ² description: H05VVF3G1.0 typ. stranding: 32/0.2 mm current rating: 10A voltage rating: 250 VAC maximum length: less than 3 meters
Australia, New Zealand	Specifications plug: AS 3112-1981 connector: IEC 320 conductor size: 3 x 1.00 mm ² description: AS 3191 typ. stranding: 32/0.2 mm current rating: 10A voltage rating: 250 VAC maximum length: less than 3 meters

1.4.6 System Requirements

Following are the *recommended* requirements for the computer on which you will install and run *LabelMark*, the *File Management Utility* and the *Wraptor Printer Driver*:

- Intel® Pentium® processor (*minimum 66 MHz 486DX2*)
- Operating system:
 - Microsoft® Windows® 2000 with Service Pack 1
 - Microsoft® Windows® NT with Service Pack 6a
 - Microsoft® Windows® XP
- Microsoft® Internet Explorer 5.01
- 64MB of RAM (*minimum 16 MB of RAM*)
- 100 MB of available hard-disk space
- 16-bit or greater video display card
- 800x600 or greater monitor resolution
- CD-ROM Drive

Chapter 2 Safety

This section contains safety information necessary for the safe operation of the *Wraptor*. Be sure to read this section prior to setting up or operating the unit.

Always be sure to adhere to the safety standards regulating your operating environment. Also adhere to the following safety rules included in or in addition to your specific standards:



WARNING: Do not wear loose clothing—such as long sleeves or scarves—that could become caught in the unit.



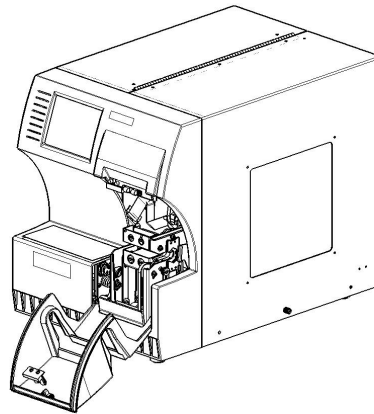
CAUTION: Keep areas around the unit clean at all times.

2.1 Automatic Stops

The *Wraptor* employs the following automatic safety stops:

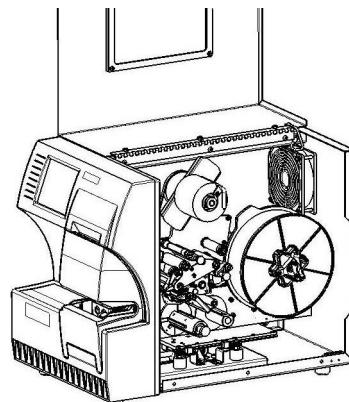
2.1.1 Front Door

A plastic cover protects the jaws of the unit. The unit is designed to automatically stop all moving parts when the plastic cover is open.



2.1.2 Side Door

The unit is designed to automatically stop all moving parts when the side door is opened. You may view the materials in motion through the plastic viewing window when the side door is closed.



WARNING: Do not attempt to disable the front or side door auto-stop mechanisms as doing so may cause injury.

2.2 Electrical Safety



CAUTION: Connect the three-conductor plug to an North American standard 120 VAC outlet. Make sure the outlet is **grounded**.



WARNING: Turn off power and unplug unit before performing any service or maintenance on the *Wraptor*.

2.3 Warning Labels

The following warning label appears on the front of the unit:



Figure 1. Hazardous Moving Parts Label—Front of Unit

The following warning label appears on the inside cover of the unit:

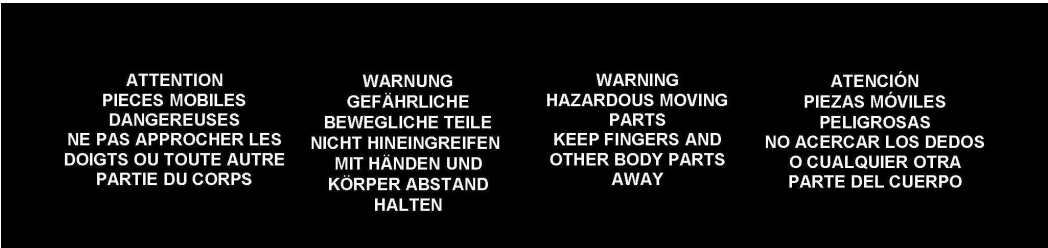


Figure 2. Hazardous Moving Parts Label—Inside Cover

Chapter 3 Component Locations

This section provides the locations and descriptions of the components that make up the *Wraptor*.

3.1 External Parts

The following figure shows the external parts located on the front of the *Wraptor*.

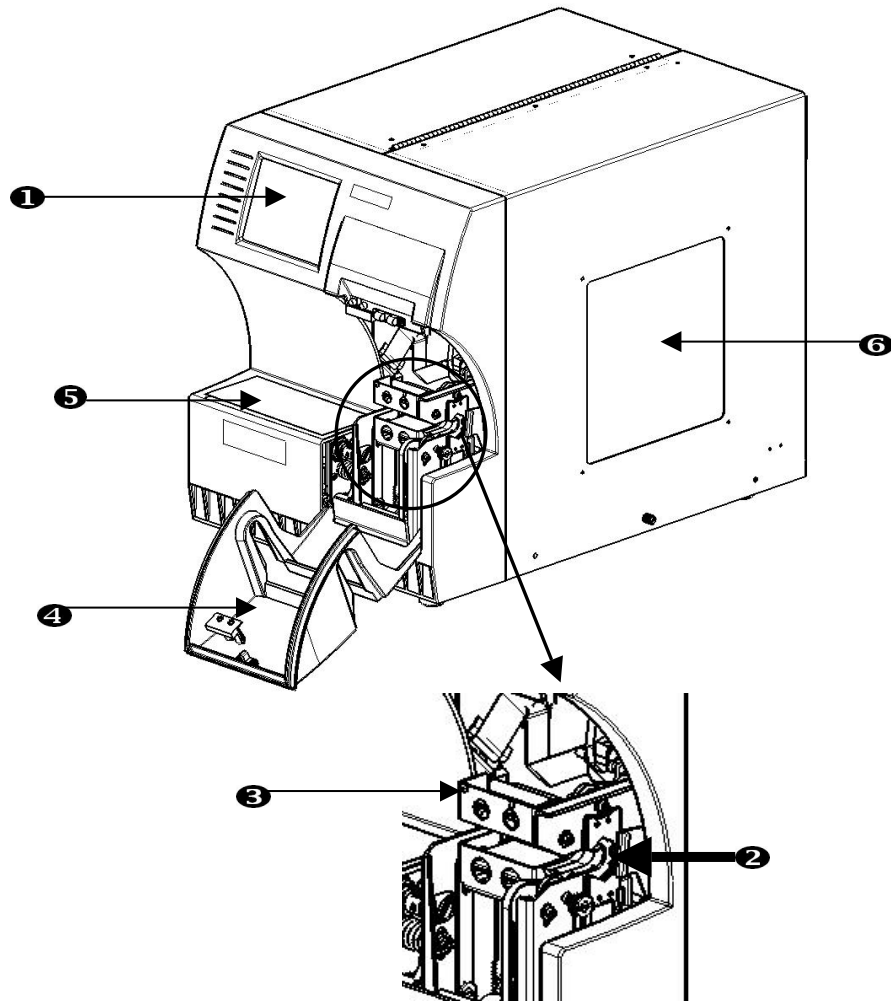


Figure 3. External Parts—Front

1. **Touch Screen**—Use the *Utility Menu* and *Control Panel* by touching this screen with your finger.
2. **Jaws**—The jaws hold the wire in place as the label is applied.
3. **Wrapper**—This is the mechanism that wraps a label around the wire.
4. **Front Door**—This clear plastic safety cover—shown in open position—protects the jaws of the unit. The unit is designed to automatically stop all moving parts when the front door is open.
5. **Hazardous Moving Parts Warning Label**—A label is affixed to the ledge on the front of the unit to warn users to keep fingers and body parts away from hazardous moving parts. The same label is also affixed to the inside cover of the unit.
6. **Viewing Window**—Allows you to view the material path while the *Wraptor* is running.

The following figure shows the external parts located on the back of the *Wraptor*.

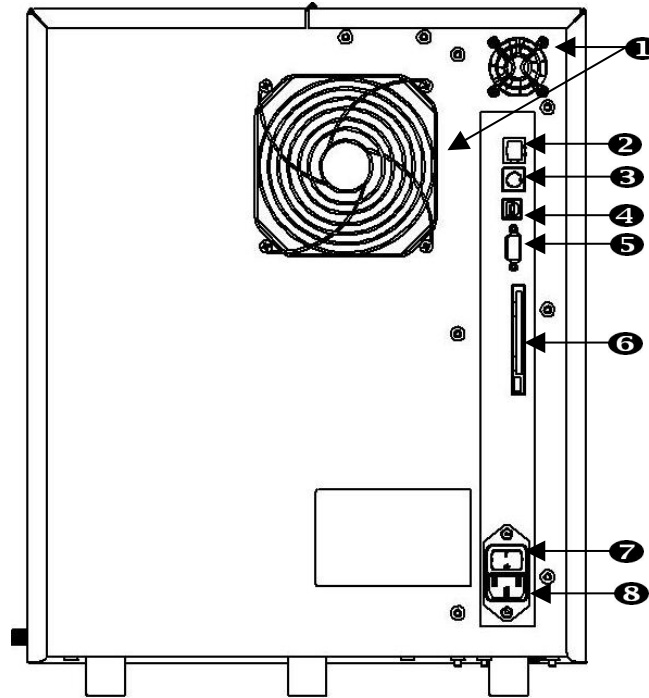


Figure 4. External Parts—Back

1. **Exhaust Fans**—The exhaust fans run continually when the *Wraptor* is powered on to keep operating components cool.
2. **Ethernet Connection**— Allows you to connect the *Wraptor* to a Local Area Network (LAN).
3. **Keyboard Connection**—Allows connection of a standard computer keyboard to the *Wraptor* (not used at this time).
4. **USB Port**—Allows you to connect the *Wraptor* to the computer's Universal Serial Bus.
5. **Serial Port**—Allows you to connect the *Wraptor* to a computer.
6. **PCMCIA Connection**—Allows connection of a PC Card Adapter so you can read/write to the CompactFlash Memory Cards.
7. **On/Off Switch**—Controls the main power to the unit.
8. **Power Inlet**—This connection uses an IEC60320 3-conductor cord with a NEMA 15 plug (N. American standard) and connects with a standard outlet supplying 120 VAC, 60 Hz power. Users in countries outside of North America may be required to supply their own power cord. See *Power Cord Specifications* on page 2.

Chapter 4 Installation and Preparation

4.1 Initial Setup

This section provides information on installing and preparing the *Wraptor* for initial use. Follow these steps before creating and printing labels:

4.1.1 Unpack and Setup the Wraptor Unit

Step 1. Unpack



WARNING: The Wraptor weighs 80 lbs. Get assistance to lift!



NOTE: Make sure the Wraptor boxes remains in the upright position at all times. Do not lay the box on its side.

1. The Wraptor comes in a cardboard box banded to a pallet. Cut the band.
2. Lift the top cover off the base.
3. Lift the Wraptor out of the protective foam surrounds and place the unit on a flat, level surface.



NOTE: Be sure to place the *Wraptor* unit on a flat, level surface that can easily support 125lbs.



NOTE: Save all packaging materials! These will be needed if you must ship the Wraptor.

4. Remove the following additional items from the Wraptor box:

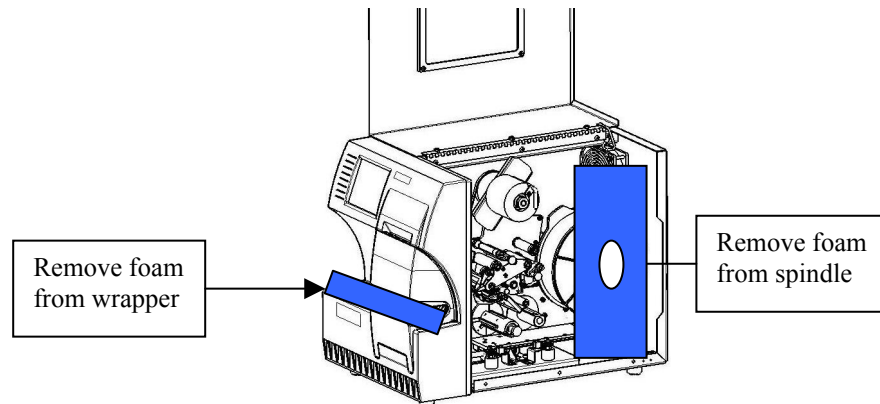
- Wraptor Utilities CD containing the following:
 - ▲ Print Driver
 - ▲ File Management Utility (FMU) software
 - ▲ *Wraptor™ User's Guide*
 - ▲ *Wraptor™ Programmer's Guide*
 - ▲ Link to Product Registration
- LabelMark CD
- Power Cord
- USB Cable

The following items come pre-installed in the Wraptor:

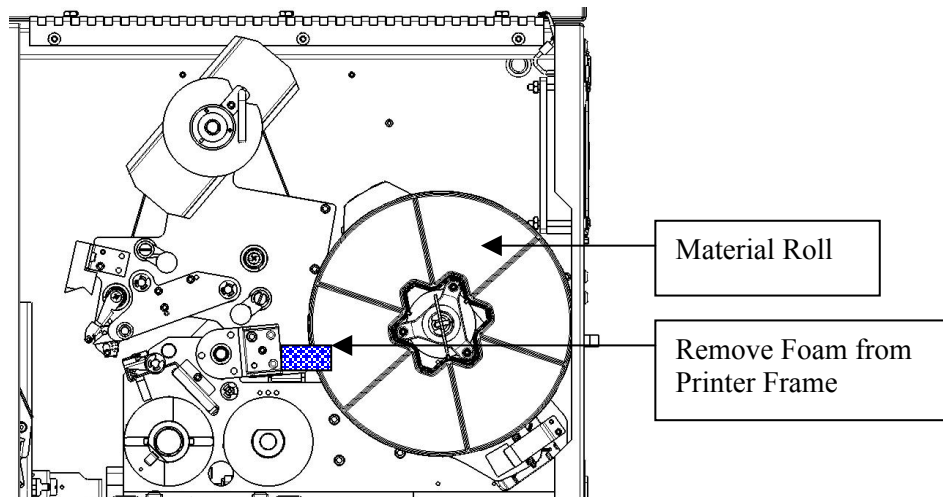
- Label Material (1" x 1.5")
- Ribbon
- CompactFlash® Memory Card

Step 2. Remove protective foam inserts

1. Remove protective foam insert from the wrapper.

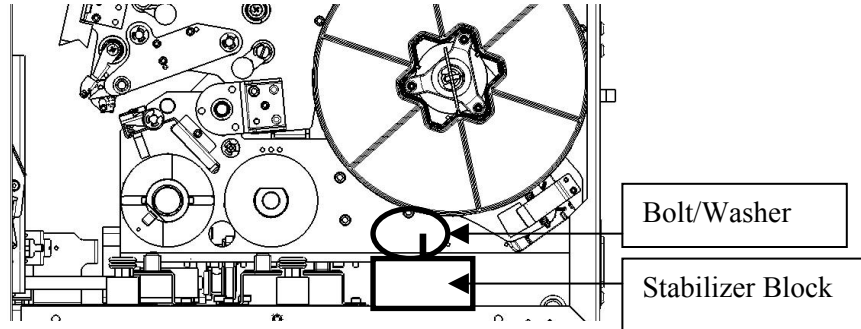


2. Open the side door, and remove protective foam covering from the material spindle.
3. Remove foam insert from underneath the right side of the printer frame. To do this:
 - ▲ Remove the material roll from the spindle.
 - ▲ Remove the foam insert.



- ▲ Replace the material roll onto the spindle. Ensure that the touch memory cell is securely positioned in the reader clip. *See Put Label Material on Spool on page 20 of this guide for instructions.*

4. Remove the stabilizer block from underneath shuttle base plate. To do this:
 - Remove the ribbon from the feed spool. *See Load the Printer Ribbon on page 23 of this guide for instructions.*



- Remove the stabilizer block bolt and washer.
- Remove the stabilizer (white) block from underneath shuttle base plate.
- Replace the ribbon onto the feed spool.
- Close the side door.

4.1.2 Load Software on the Computer and Connect Wraptor

The Wraptor Utilities CD-ROM and LabelMark CD contain the applications necessary to create, print and manage your labels and label files:

- **LabelMark**—*LabelMark* allows you to create and format labels for a variety of industrial applications.
- **File Management Utility**—This application allows you to transfer label files between your computer, the *Wraptor* and the *Wraptor's* CompactFlash Memory Card.
- **Wraptor Printer Driver**—The printer driver allows your computer to print labels to the *Wraptor* unit.

Step 1. Install LabelMark on Your Computer

1. Insert the LabelMark CD into your CD drive. The install screen appears.

If the install does not start automatically, select **Start → Run**, type **D:\setup.exe** and click **OK** (replace *D:* with your CD drive.)

2. Click **Install LabelMark**.
3. Follow the prompts on your screen.



NOTE: Refer to the *LabelMark User's Guide* for more information.

Step 2. Insert the Wraptor CD.

Insert the enclosed *Wraptor Utilities CD-ROM* into your computer's CD Drive. The *Wraptor Installation Menu* appears:



Figure 5. Wraptor Installation Menu



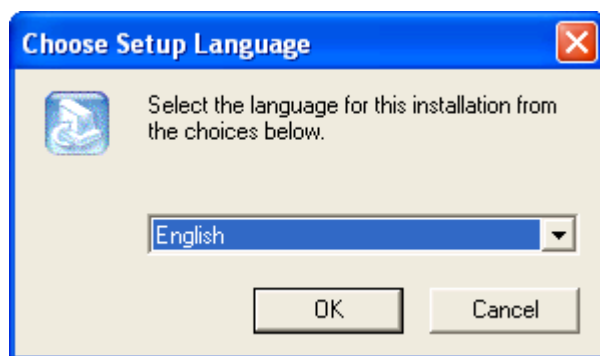
NOTE: If the CD does not start automatically: Click **Start** → **Run**, then type **D:\CDSETUP.exe** and click **OK** (where *D:* is your CD-ROM drive).

Step 3. Install the File Management Utility

Click **Install File Management Utility** on the *Wraptor Installation Menu* and follow the screen prompts.

Step 4. Install the Wraptor Printer Driver

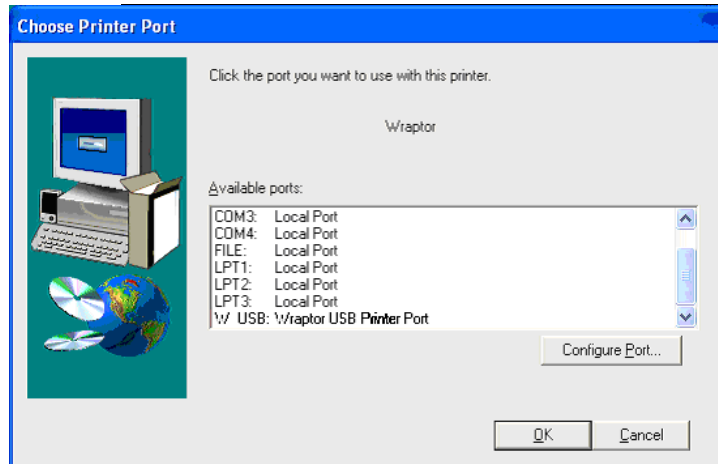
1. Click **Install Wraptor Printer Driver** on the *Wraptor Installation Menu*.
2. Select the language and click **OK**.



3. Select the port (Serial, USB or FILE) you want to install from the list of *Available ports*:



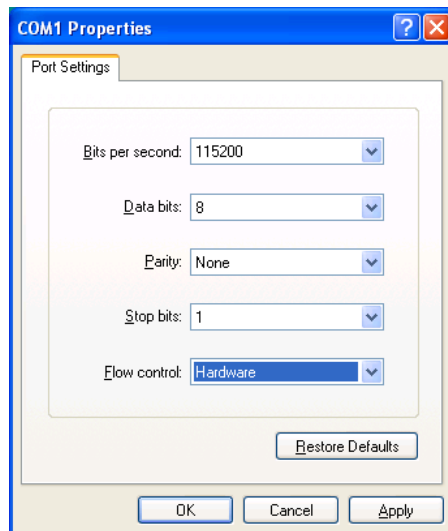
NOTE: If you will access the *Wraptor* via a Local Area Network (Ethernet/TCP/IP), select **FILE** as the printer port.



4. If you selected as the port type:
- A *USB port* or *FILE*, click **OK**.
 - A *serial port*, click **Configure Port...**, set the values as shown below, click **Apply** and then click **OK**.



NOTE: If you are connecting your computer to the *Wraptor* with a serial cable, you **must** configure the port or the computer will not be able to communicate with the *Wraptor*.



5. Next a dialog will prompt you to reboot the computer.

Select **Yes** and **Finish** to reboot the computer and complete the installation. Then, complete the appropriate configuration step below to finalize the printer driver installation.

Step 5. Configure for USB Operation

This step describes how to configure the computer and *Wraptor* to communicate via a USB cable. If you are not using a USB cable, skip this step.



NOTE: You must complete the *Install the Wraptor Printer Driver* procedure on page 11 before configuring the printer driver for USB operation.

To configure for USB operation:

1. Plug the provided USB cable into the computer and the Wraptor unit.
2. On the Wraptor Control Panel:
 - Select the **CONFIG** tab.
 - Select **USB** as the *Connection Type*.

The *Wraptor* is ready to print and wrap via the USB connection.

Step 6. Configure for Serial Operation

This step describes how to configure the computer and *Wraptor* to communicate via a serial cable. If you are not using a serial cable, skip this step.



NOTE: You must complete the *Install the Wraptor Printer Driver* procedure on page 11 before configuring the printer driver for serial operation.

1. Connect the computer to the *Wraptor* with a *DB9 female to DB9 male straight through cable*.
2. On the *Wraptor Control Panel*:
 - Select the **CONFIG** tab.
 - Select **Serial** as the *Connection Type*.



NOTE: Remote control uses the serial port to communicate with the *Wraptor*. Therefore, the *Connection Type* cannot be *Serial* when remote control is in use.

The *Wraptor* is ready to print and wrap via the serial connection.

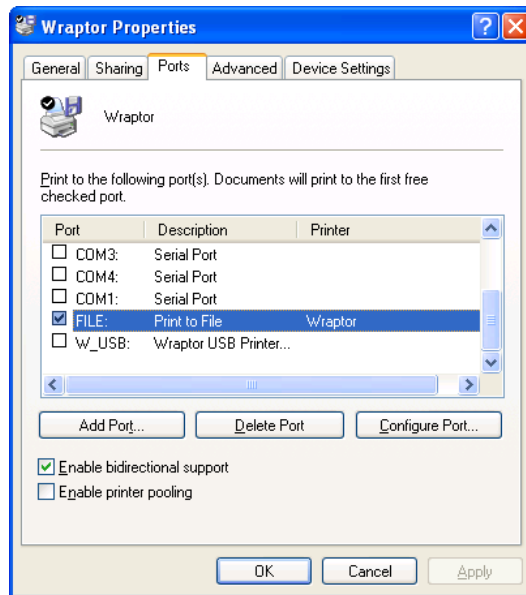
Step 7. Configure for Ethernet (TCP/IP) Operation

This step describes how to configure the computer and *Wraptor* to communicate via an Ethernet (TCP/IP) connection. If you are not using a local area network, skip this step.

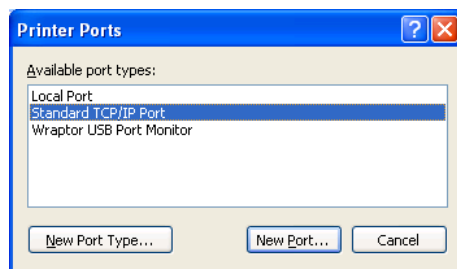


NOTE: You must complete the *Install the Wraptor Printer Driver* procedure on page 11 before configuring the printer driver for Ethernet (TCP/IP) operation.

1. Connect the computer to the LAN and connect the *Wraptor* to the LAN.
2. Power the *Wraptor* on.
3. Select **Start → Settings → Printers**.
4. Right-click on the **Wraptor** icon. The *Wraptor Properties* dialog appears.
5. Click the **Ports** tab.

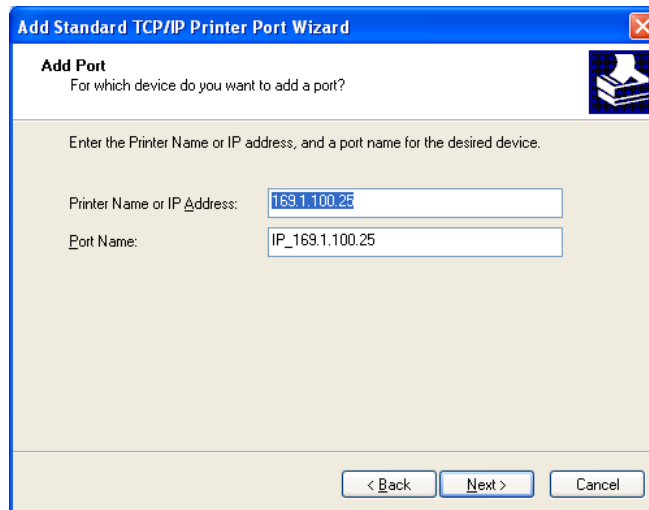


6. Click the **Add Port...** button.
7. Select **Standard TCP/IP Port** from *Available port types* list, click **New Port...** and then click **Next**.

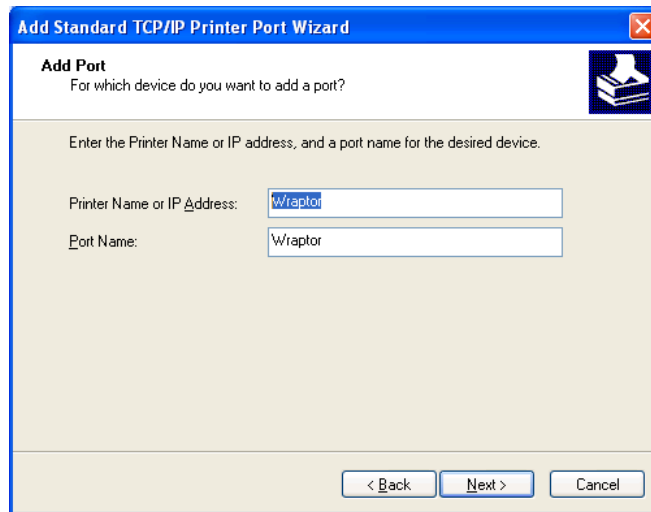


8. Enter the *Printer Name or IP Address* and click **Next**.

NOTE: The *Port Name* fills in automatically.

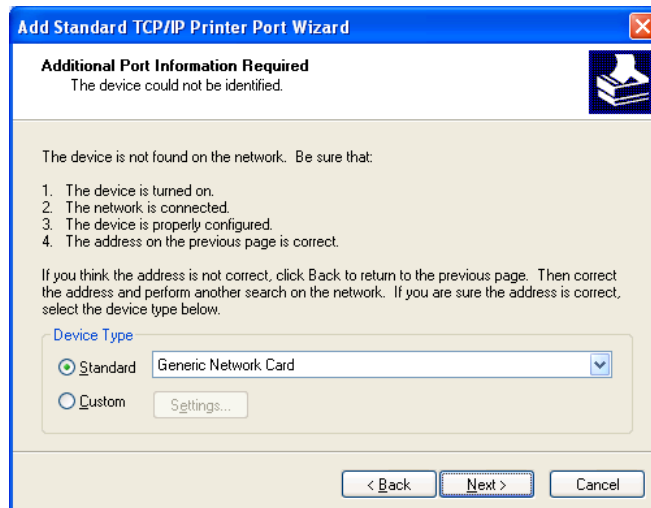


IP Address Option



Printer Name Option

9. Select the **Standard Device Type** option and **Generic Network Card** from the list and click **Next**.



10. Click **Finish** and then click **Close** twice to exit the *Printer Ports* and *Wraptor Properties* dialog boxes.
11. On the *Wraptor Control Panel*:
 - Select the **CONFIG** tab and select **TCP** as the *Connection Type*
 - If you entered a *fixed IP address* in the printer driver (step 8):
 - ✦ Select the **IP** tab
 - ✦ Select the **Specify IP Address** option
 - ✦ Select the **Enter IP Number...** button
 - ✦ Enter the same *IP address* you entered earlier
 - ✦ Select the **OK** button
 - If you entered a *printer name* in the printer driver (step 8):
 - ✦ Select the **Obtain DHCP Address** option
 - ✦ Type the same *printer name* you entered earlier in the *Name:* field of the *IP tab*

- ▲ Press the **Enter DNS Number...** button
- ▲ Enter the *DNS Server* or *WINS Server*
- ▲ Select the **OK** button

The *Wraptor* is ready to print and wrap via the Ethernet/TCPIP connection.

4.1.3 Power Up the Wraptor

Step 1. Connect Unit to Power

1. Obtain a suitable alternate power cord if outside of North America. See *Power Cord Specifications* on page 2 for appropriate substitutes.
2. Connect the power cord to the back of the *Wraptor* and into the outlet.



CAUTION: Make sure the outlet is **grounded**.

Step 2. Power Unit ON

If you haven't already done so, power on the *Wraptor* unit. The touch screen automatically initializes and the *Wraptor Control Panel* screen appears. See *The Wraptor Control Panel* on page 29 of this guide for details.

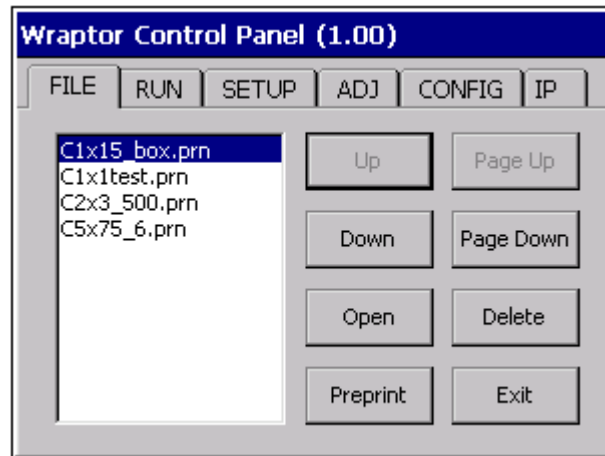


Figure 6. Wraptor Control Panel

Complete the *Load Label Material* and *Load the Printer Ribbon* steps to prepare the *Wraptor* for printing/wrapping.

4.2 Load Label Material

Follow the steps below to load label material in the *Wraptor* unit. Use the material path shown below as your guide:

The following figure shows the *Wraptor*'s material path. The material path is the route a roll of labels takes through the printer. Open the side cover of the *Wraptor* unit to see the material path.

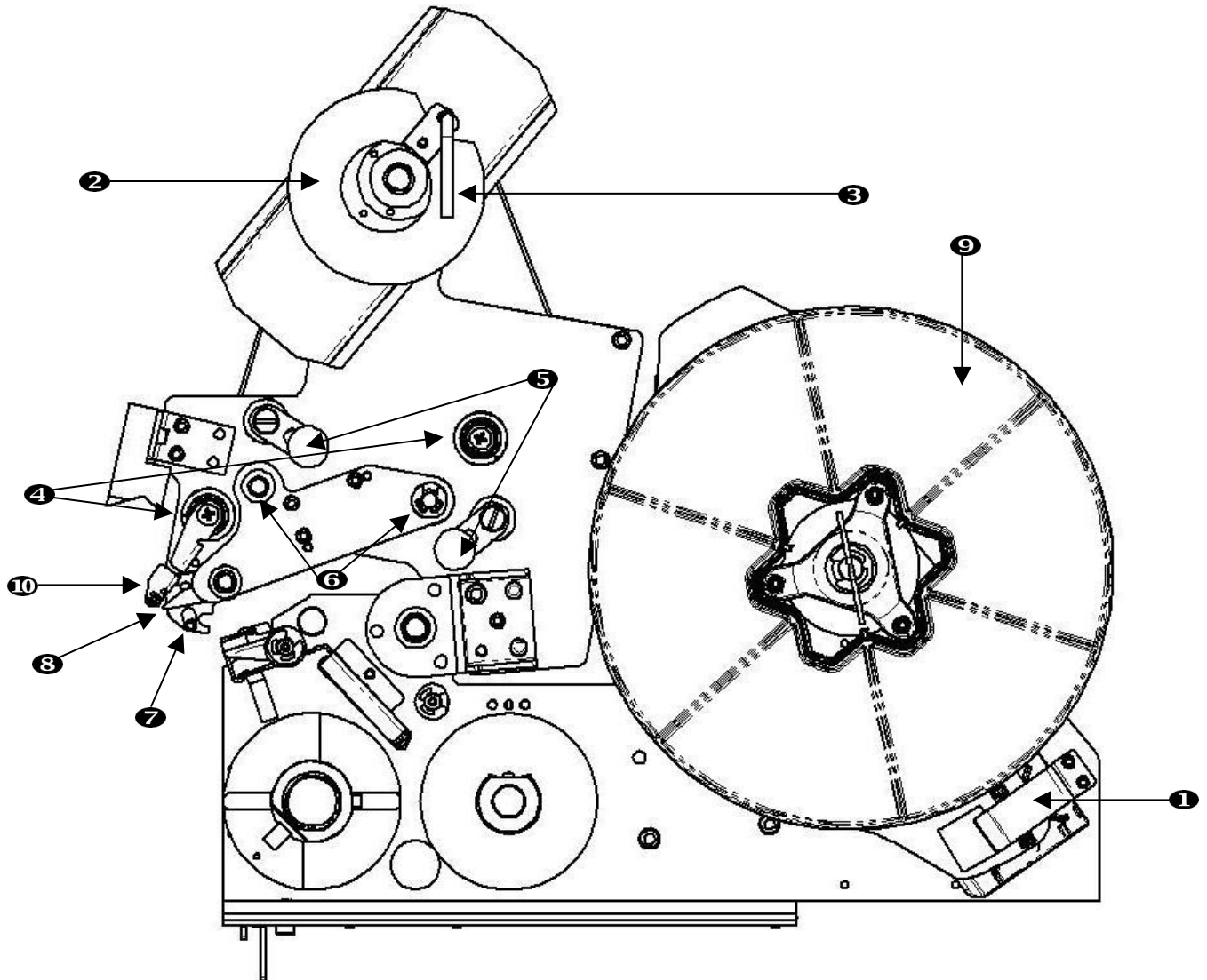


Figure 7. Material Path Parts

- | | |
|-------------------------------|---------------------|
| 1. Material Reader | 6. Drive Rollers |
| 2. Label Take-Up Spool | 7. Optic Sensor Bar |
| 3. Label Take-Up Spool Handle | 8. Peel Plate |
| 4. Guide Rollers | 9. Label Roll |
| 5. Nip Rollers | 10. Label Deflector |

Step 1. Initiate Label Load in Control Panel

From the *Wraptor Control Panel*, select **SETUP → LOAD LABELS**.



NOTE: The print/wrap assembly automatically slides back for easy access during the material loading process.

Step 2. Open the Wraptor Unit

Lift the side door of the *Wraptor* unit.

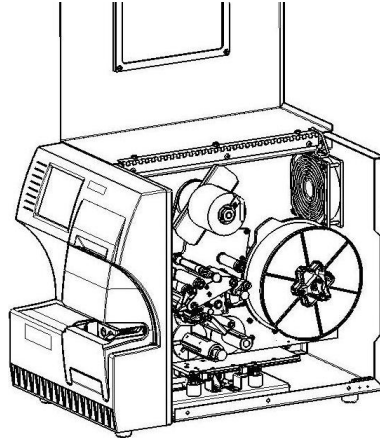


Figure 8. Wraptor with Side Door Open



NOTE: Material threading instructions are also located on the inside of the side door.

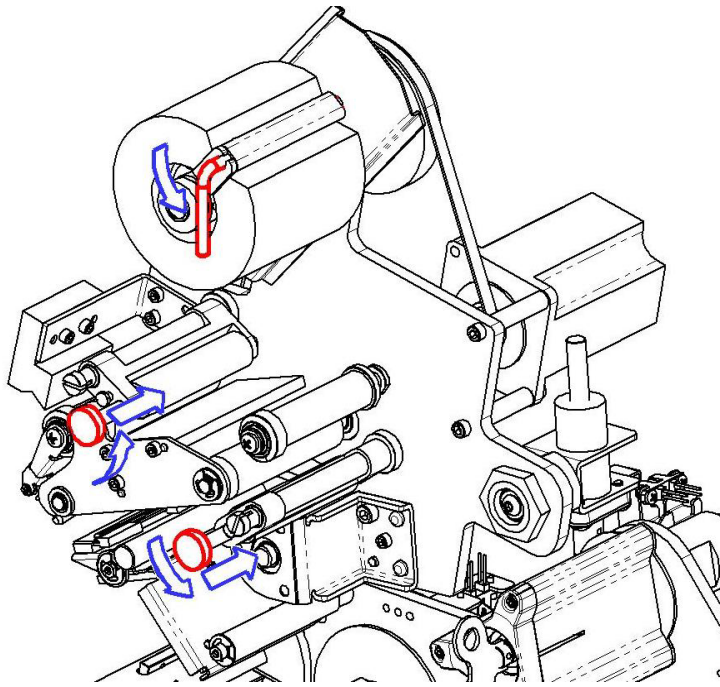
Step 3. Open Rollers



WARNING

**The take-up reel motor is active when the side door is open.
KEEP FINGERS AND OTHER BODY PARTS AWAY**

- Open the take-up spool handle (turn counter-clockwise)
- Open the nip rollers:
 - Open the left roller by swinging it up and then pushing in
 - Open the right roller by swinging it down and then pushing in

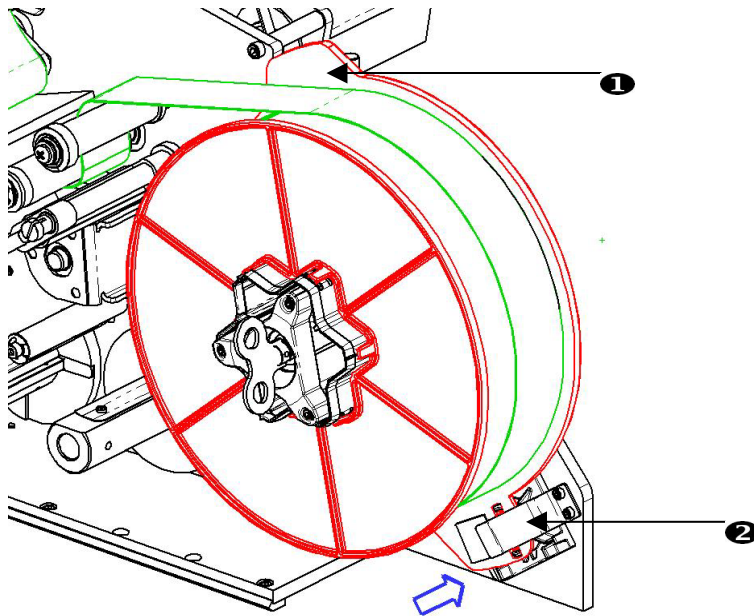


Step 4. Remove Previously Used Material

- If material is currently loaded, remove it.
 - Open the label take-up spool handle.
 - Open the nip rollers.
 - Use a scissors to cut the label material between the liner and remaining labels. You may leave about 8" of liner on the roll for future threading.
 - Remove the used liner from unit and discard.
 - Remove the remaining label roll from unit.
 - Use tape to secure the end of the label roll. Be careful not to let the material spool unwind from the core.

Step 5. Put Label Material on Spool

- Place the label roll on the spool
- Turn flange counter-clockwise to rotate the label roll so the touch memory cell is *securely* positioned in the reader clip



1. Flange
2. Reader Clip

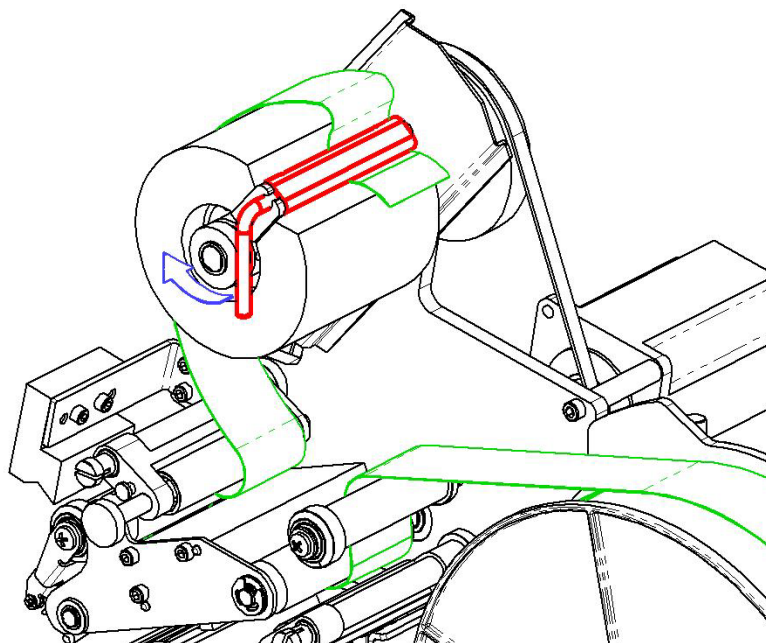
Step 6. Thread Labels

Thread the label:

- Over the first guide roller
- Under the first drive roller and over the first nip roller
- Above the optic sensor bar
- Lift the label deflector and thread the material between the peel plate and deflector. Continue to thread the label:
- Under the second guide roller and over the second drive roller
- Under the second nip roller

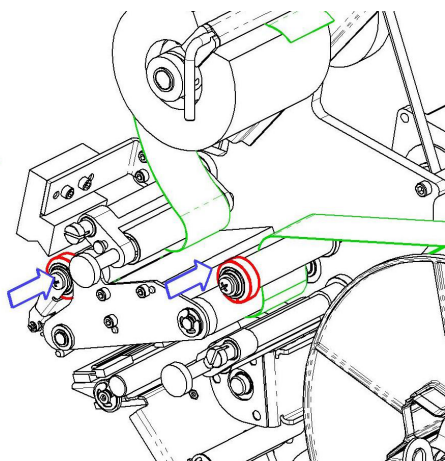
Step 7. Thread Labels Under Take-Up Bar

- Thread the labels under the take-up bar.
- Close the take-up spool handle (turn clockwise).
- Rotate the take-up spool to remove slack.



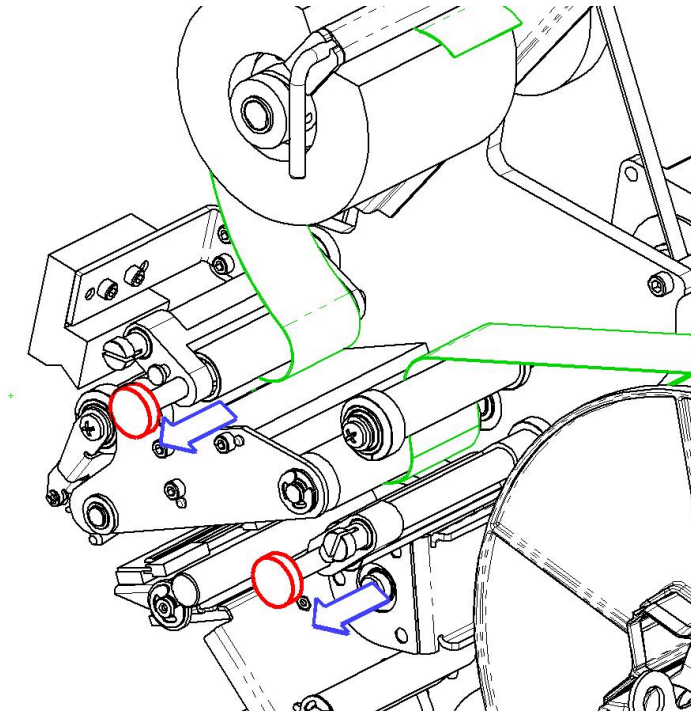
Step 8. Adjust Guide Rollers

- Be sure labels are up against the far side of the rollers.
- Position guide rings snug to the label liner.



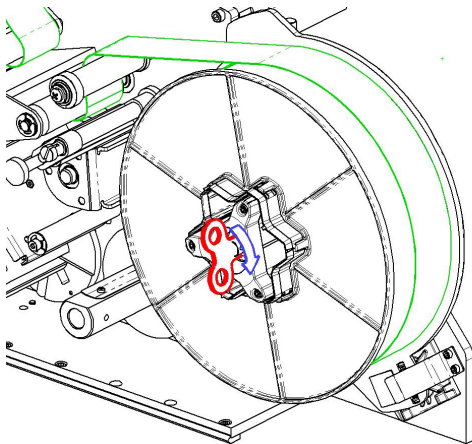
Step 9. Close Nip Rollers

Pull out and snap closed.



Step 10. Tighten With Key

Turn spool key clockwise to remove slack.



Step 11. Feed a label

Press the **Feed Label** button on the *Wraptor Control Panel* until a label dispenses.



IMPORTANT: Be sure to remove the dispensed label. Failure to do so will jam the print mechanism.

Step 12. Close the Wraptor Unit

Close the side door of the *Wraptor* unit.

Step 13. Place the Wraptor online

Press the **Online** button on the *Wraptor Control Panel* to prepare the *Wraptor* to print.

This shuttles the print/wrapper mechanism forward and tilts the print head closed.

4.3 Load the Printer Ribbon

Follow the steps below to load a ribbon in the *Wraptor* unit. Use the ribbon path shown below as your guide:

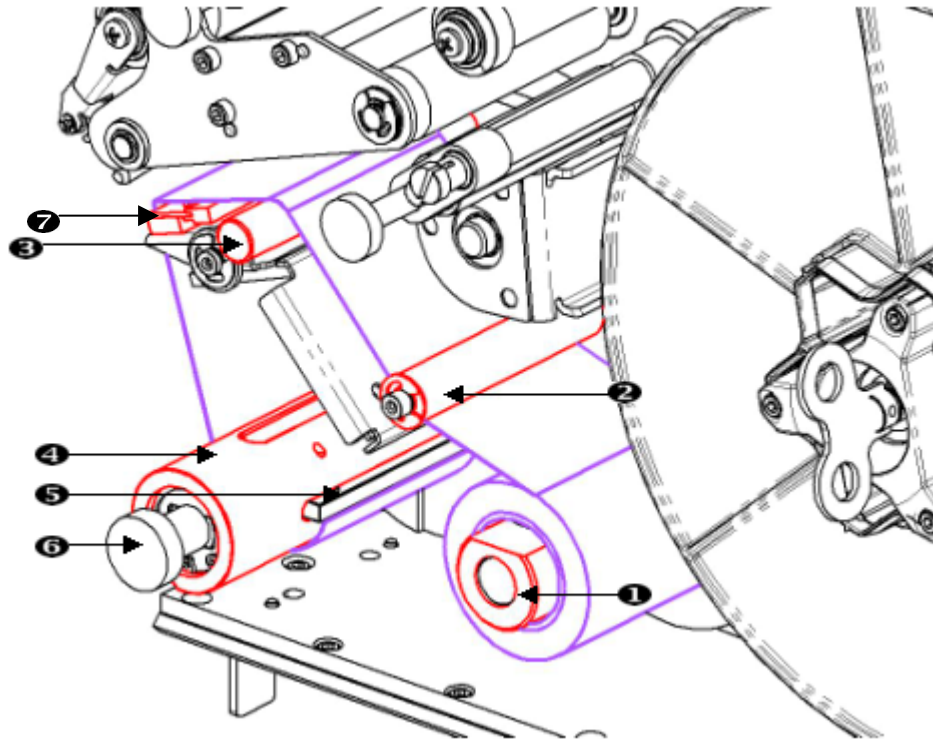


Figure 9. Ribbon Path Parts

1. Feed Spool
2. Guide Roller
3. Guide Bar
4. Take-up Spool
5. Clip
6. Take-up Spool Knob
7. Printhead

Step 1. Initiate Ribbon Load in Control Panel

From the *Wraptor Control Panel*, select **SETUP → LOAD RIBBON**.

Step 2. Open the Wraptor Unit

Lift the side door of the *Wraptor* unit.

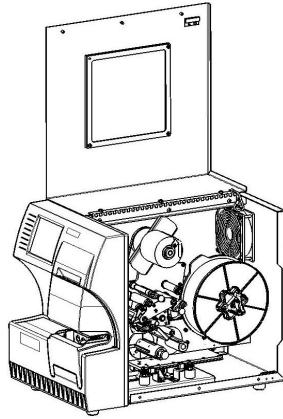


Figure 10. Wraptor with Side Door Open

Follow the steps below to load the ribbon.



NOTE: Ribbon threading instructions are also located on the inside of the side door.

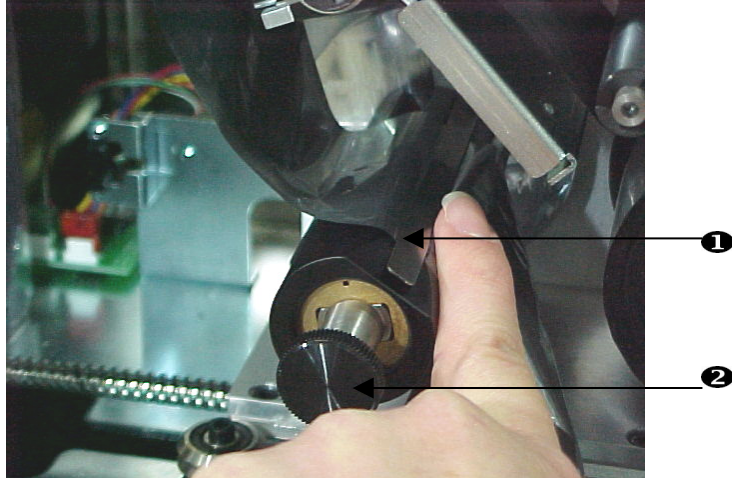
Step 3. Remove the Old Ribbon

If ribbon is currently loaded, remove it:

- Cut the ribbon between the guide bar and take-up spool.
- Hold the edge of the take-up spool while turning the knob clockwise until it stops.
- Pull the take-up spool knob to remove the used ribbon from the take-up spool and discard.
- Re-engage the take-up spool by pushing it in all the way until the knob auto-rotates back to its original position. **Failure to re-engage the take-up spool will make it difficult to remove the old ribbon next time!**
- Remove remaining ribbon, if any, from the feed spool.
- Use tape to secure the end of the ribbon roll.

Step 4. Thread Ribbon

- Place the ribbon roll on the feed spool.
- Thread the ribbon under the guide roller and over the guide bar and printhead.
- Feed ribbon under the clip as shown below until approximately 1/4" of ribbon is past the clip.
- Turn the take-up spool knob counter-clockwise until the ribbon is wrapped around the take-up spool several times to ensure that it won't unravel.



1. Ribbon Clip
2. Ribbon take-up spool

Step 5. Close the Wraptor Unit

Close the side door of the *Wraptor* unit.

Step 6. Place the Wraptor online

Press the **Online** button on the *Wraptor Control Panel* to prepare the *Wraptor* to print.

Chapter 5 General Operation

This section provides an overview of the *Wraptor* operation process.

5.1 Creating, printing and wrapping labels

The *Wraptor* works in conjunction with your computer and software applications included with the unit. The process flow is as follows:

On your computer:

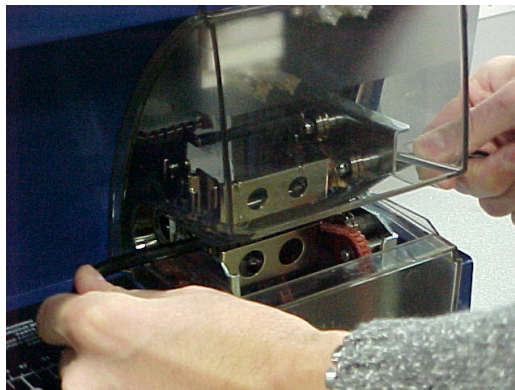
1. “Design labels on your computer using Brady’s LabelMark software.
2. Print” your completed labels to the Wraptor printer with the Print command.

On the Wraptor printer:

1. *Open* the print file you want to work with on the *Wraptor Control Panel’s* File tab.
2. Physically insert a cable/wire into the *Wraptor* jaws to print/wrap or wrap a label.



**WARNING: The wrapper mechanism contains
HAZARDOUS MOVING PARTS
KEEP FINGERS AND OTHER BODY PARTS AWAY**



NOTE: Be sure to hold the wire straight and tight during the wrapping process.



CAUTION: The maximum wire diameter that can be used in Wraptor™, INCLUDING the wire's outer jacket, is 0.600". Exceeding this diameter will jam and potentially damage the machine. If a wire diameter less than 0.060" (including wire jacket) is used, the label will not wrap successfully.

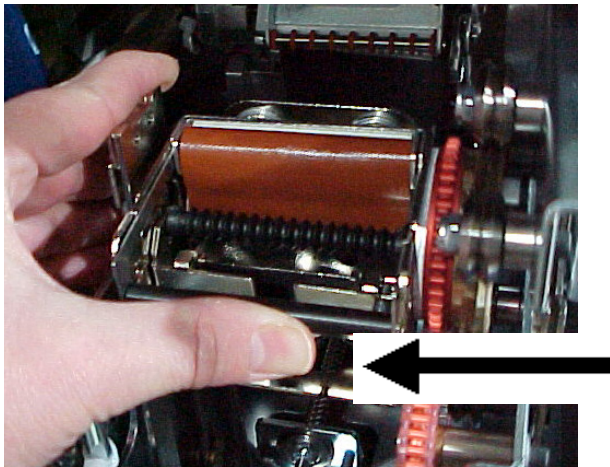
5.1.1 Wrap Quality

Please heed the following tips as not doing so may effect the quality of your wrap:

- ◆ Make sure to hold the wires tight and straight during wrapping. Kinked or curved wire may cause spiraling or bubbling.
- ◆ Make sure to use the correct size label for the wire you intend to wrap.
- ◆ Do not use wire jackets with greasy coatings or the label will not wrap properly.
- ◆ Inspect the peel plate area—especially below—to ensure there are no stuck labels.
- ◆ Clean rollers to ensure that there is no adhesive build-up. *See Cleaning on page 50 of this guide for cleaning and maintenance recommendations.*

Adjustment for Wire Bundles

You will sometimes (not always) need to adjust the wrapper for wire bundles. This will most likely be necessary when the bundle contains large wires. To do this:



1. Press the **Load Labels** button on the *Setup* tab menu. This shuttles the printer to the “shuttle-back” position.
2. Power off and unplug the *Wraptor*.



WARNING: You must power off and unplug the *Wraptor* prior to performing any cleaning or maintenance!

3. Open the front (clear) door on the *Wraptor*.
4. Unscrew the #8-32 socket head cap screw as necessary to retract the roller enough to accommodate the wire bundle.
5. Close the front door.
6. Wrap the large wire bundles.



CAUTION: You must re-screw the #8-32 socket head cap screw to bring the roller back out before attempting to wrap other wires. The roller must be brought back out **completely** in order run in normal operating mode. Failure to do so will compromise wrap quality.

5.1.2 Print details

When you “print” your labels to the *Wraptor*, the computer creates a print file:

- Print files are saved with the *LabelMark* file name and a PRN extension.
- The PRN file contains all the information necessary to print your labels.
- PRN files can be stored in the *Wraptor*’s internal memory, on your computer’s hard drive or on the *Wraptor*’s CompactFlash Memory Card.
- The *Wraptor* unit does not immediately print the labels, you must select the print file on the *Wraptor Control Panel* before performing the printing and wrapping processes.

If your computer is connected to the *Wraptor* with a Serial, USB, or Ethernet (TCP) connection, “printing” sends the print file directly to the *Wraptor* unit.

If your computer is not connected to the *Wraptor*, you can print your labels to a file on the computer and then transfer it to a CompactFlash Memory Card with the *File Management Utility*.

5.1.3 Managing print files

Wraptor can keep approximately 30 print files in its internal memory depending on the label file size.

Use the *File Management Utility* to:

- Move print files between the computer, the *Wraptor* and CompactFlash Memory Cards.
- Delete print files you no longer need.

5.2 Using the Touch Screen

The *Wraptor* includes a touch screen that you use to control the unit. Touch the screen with your finger to make a selection from the menus.



NOTE: Do not use a writing pen or other sharp object. Doing so may mar the touch screen surface.



NOTE: If you are having difficulty selecting items on the touch screen, see the *Calibrate Touch Screen Command* section on page 41.

5.3 The Wraptor Control Panel

You control the *Wraptor* through the touch screen *Control Panel*. When you turn the *Wraptor* unit on, the touch screen initializes itself and the *Wraptor Control Panel* appears:

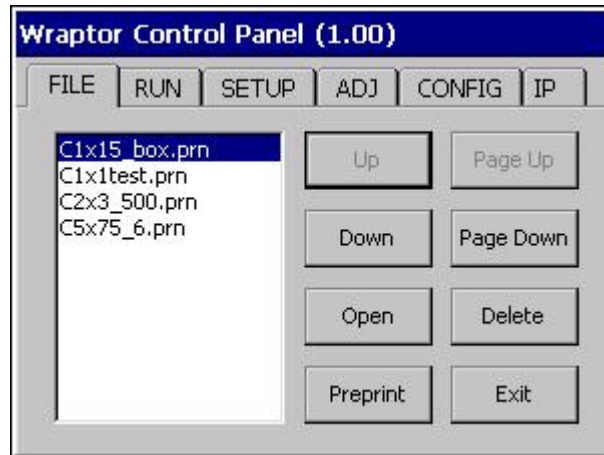


Figure 11. *Wraptor Control Panel on the Touch Screen*

The *Control Panel* has six tabs with printer-related commands: File, Run, Setup, Adj, Config and IP. Press a tab or button on the touch screen with a finger to select it.

The following sections provide information on the tabs and their commands.

5.3.1 File Tab Commands

The *File* tab allows you to open and delete print files. You can also use the *File* tab to wrap preprinted labels. The following table shows the command buttons found under the *File* tab with their corresponding uses.

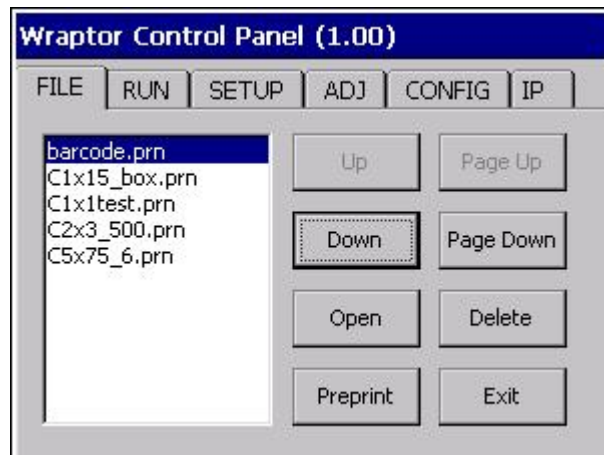


Figure 12. *File Tab Menu*



NOTE: Print files (PRN) are stored in the *Wraptor*'s internal memory and on CompactFlash Memory Cards. See information on the *Configuration* tab to learn how to switch locations.

Button	Description
Up, Down, Page Up, Page Down	Use to highlight a print file in the list.
Open	Use to launch the highlighted file and begin printing/wrapping labels. The open command reads the print file and displays its first label in the <i>Run</i> tab.
Preprint	Use for pre-printed labels – <i>Wraptor</i> wraps but does not print the labels. The word <i>PREPRINT</i> is displayed in the <i>Run</i> tab.
Delete	Use to remove the highlighted file from the <i>Wraptor</i> internal memory. <i>Wraptor</i> displays a message box to confirm the deletion.
Exit	Use to leave the <i>Wraptor Control Panel</i> and display the <i>Utility Menu</i> . The <i>Utility Menu</i> allows you to upgrade the system software, calibrate the touch screen, and change languages.

Open Command

The *Open* command ensures that the file selected to be opened is a valid print file and compares the label type embedded in the file with the label material currently loaded in the *Wraptor* printer. If the wrong label material is loaded in the printer, a message displays similar to the one shown in *Figure 13*.



Figure 13. Label Mismatch Warning Message

Press **Yes** to continue the print/wrap operation and **No** to cancel the operation.



CAUTION: Use caution when overriding this warning message. The label size loaded in the printer may not be appropriate for the print file and will generate scrap.

5.3.2 Run Tab Commands

The *Run* tab menu allows you to set the label to be wrapped (see *Figure 14*). This menu displays the current label, allows you to move to a different label and provides status information about the printing/wrapping process.

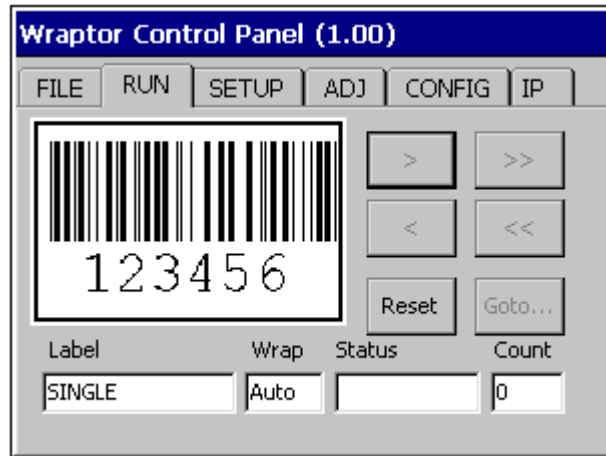


Figure 14. Run Tab Menu

The following table describes the *Run* tab command buttons and status fields:

NOTE: The “go to” buttons are disabled if the print file only contains one label.

Button	Description
>	Goes to the next label.
<	Goes to the previous label.
>>	Goes to the last label in the file.
<<	Goes to the first label in the file.
Goto...	Prompts for the label number to jump to.
Reset	Sets the <i>Count</i> (number of labels wrapped) to zero.
Wrap	Shows the operating mode of the printer: Auto or Manual. See <i>Config Tab Commands</i> on page 36 for details.
Count	Displays the number of labels wrapped.
Label	Displays the position in the label file. If the print file only contains one label this field displays <i>SINGLE</i> .
Status	The <i>Busy...</i> message is displayed in this field when the printer is repositioning to another label in the print file.

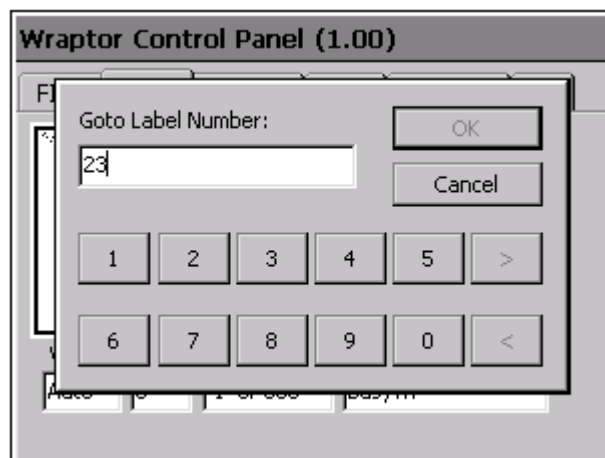


Figure 15. Goto... Dialog

5.3.3 Setup Tab Commands

The *Setup* tab menu allows you to load labels and ribbons and to clear jams.

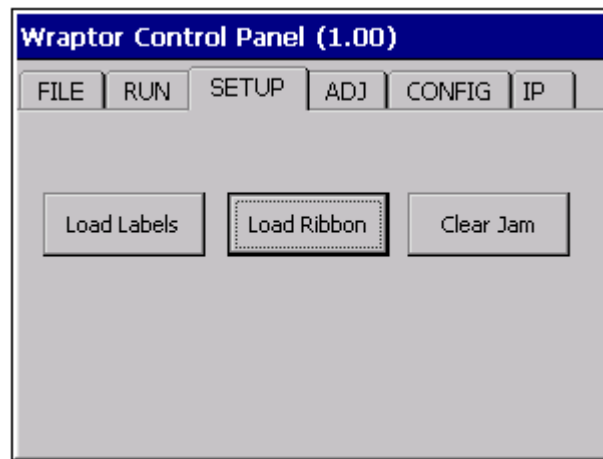
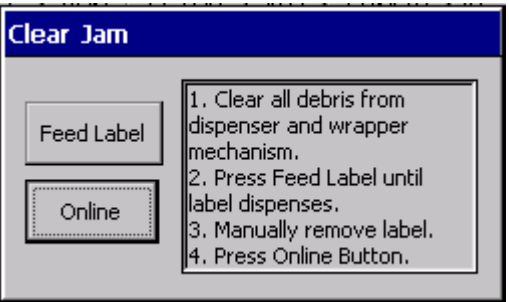


Figure 16. Setup Tab Menu

The following table describes the *Setup* tab command buttons:

Button	Description	Wraptor Dialog
Load Labels	<p>Shuttles the print/wrapper mechanism back, tilts the print head open and displays the <i>Load Labels</i> dialog. To load labels:</p> <ul style="list-style-type: none"> Physically load the labels in the <i>Wraptor</i> unit as described in <i>Load Label Material</i>. Press Feed Label until a label dispenses. IMPORTANT: Be sure to remove the dispensed label. Failure to do so will jam the print mechanism. Press Online to shuttle the print/wrapper mechanism forward, tilt the print head closed and prepare the <i>Wraptor</i> to print. 	<p>Load Labels Instructions</p>
Load Ribbon	<p>Shuttles the print/wrapper mechanism back, tilts the print head open and displays the <i>Load Ribbon</i> dialog. To load the ribbon:</p> <ul style="list-style-type: none"> Physically load the ribbon in the <i>Wraptor</i> unit as described in <i>Load the Printer Ribbon</i> section. Press the Online button to prepare the <i>Wraptor</i> to print. This shuttles the print/wrapper mechanism forward and tilts the print head closed. 	<p>Load Ribbon Instructions</p>

Clear Jam	Shuttles the print/wrapper mechanism back, tilts the print head open and displays the <i>Clear Jam</i> dialog. To clear the jam: <ul style="list-style-type: none"> • Clear the debris from the wrapper and dispenser mechanisms. • Press the Feed Label button until a label dispenses. • IMPORTANT: Be sure to remove the dispensed label. Failure to do so may jam the print mechanism again. • Press the Online button to prepare the <i>Wraptor</i> to print. 	 <p>Clear Jam Instructions</p>
------------------	---	--

5.3.4 Adj Tab Commands

The *Adj* tab menu is used to adjust print density and margins relative to the factory settings. It also offers an *Advanced...* button to adjust other print settings that typically require some detailed printer knowledge.

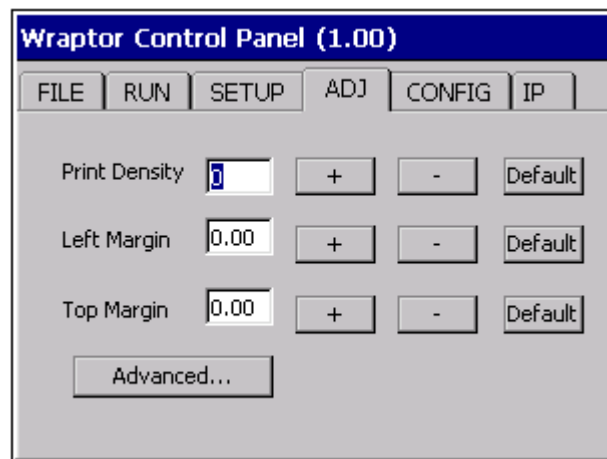


Figure 17. Adj Tab Menu

The following table describes the *Adj* tab commands:

Setting	Description
Print Density	Adjusts the print darkness. Allowable adjustment range is -10 to +10.
Left Margin	Moves the starting position of all text on a label left or right.
Top Margin	Moves the starting position of all text on a label up and down.
-	Decreases the adjustment by 0.01" (0.25 mm).
+	Increases the adjustment by 0.01" (0.25 mm).
Default	Changes the setting back to zero.
Advanced	Displays a dialog of advanced settings.

Advanced Settings Menu

The *Advanced Settings* menu (shown in *Figure 18*) appears when you press **Advanced....** It allows you to adjust the *Feed to Wire* setting. It also displays the total number of cycles the *Wraptor* has run and the *Wraptor's* software version number.

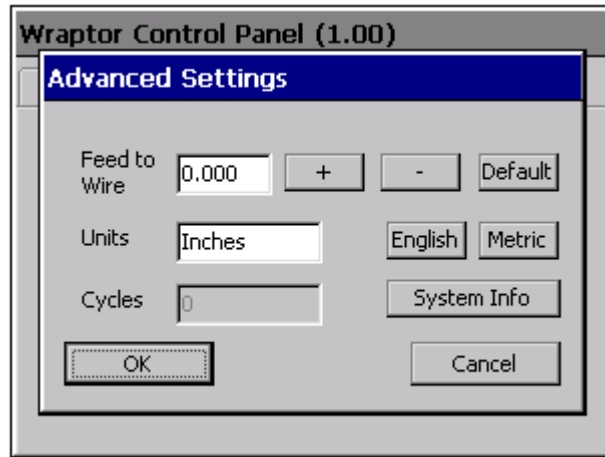


Figure 18. Advanced Settings Menu

Advanced Settings Commands

Button	Description
Feed to Wire	Adjusts the amount that <i>Wraptor</i> peels a label prior to wrapping it. CAUTION: Inappropriate adjustment can result in a poor label wrap.
-	Decreases the <i>Feed to Wire</i> distance by 1/300 inch (0.08 mm) relative to the factory setting.
+	Increases the <i>Feed to Wire</i> distance by 1/300 inch (0.08 mm) relative to the factory setting.
Default	Changes the <i>Feed to Wire</i> distance back to the factory setting (i.e. zero).
Units	Changes the units of measure.
English	Sets <i>Units</i> to inches.
Metric	Sets <i>Units</i> to millimeters.
Cycles	Displays total number of print/wrap cycles on the printer. The cycle value is not adjustable.
System Info	Displays software version information.
OK	Saves changes and closes the dialog.
Cancel	Closes dialog without saving changes.



Figure 19. System Information

5.3.5 Config Tab Commands

The *Config* tab menu (Figure 20) allows you to set the *Wraptr* printer configuration. For example, the connection type, operating mode and file location. Descriptions of the options follow:

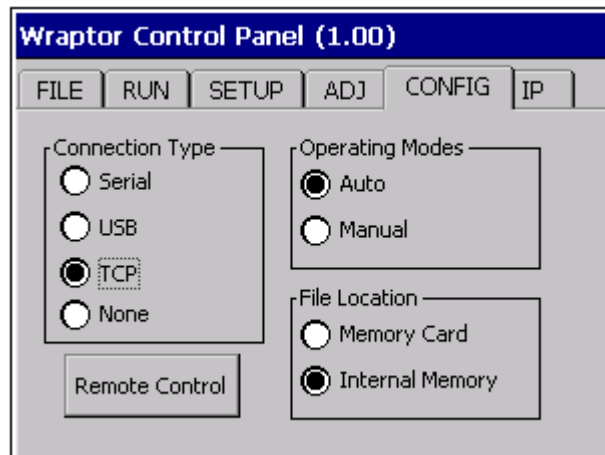


Figure 20. Config Tab Menu

Connection Type

You can connect your computer (running Brady's *LabelMark* software and the *Wraptr* printer driver) to the *Wraptr* unit in one of three ways: Serial cable, USB cable or Ethernet (TCP/IP) connection. The *Connection Type* determines the way the computer transfers files to the *Wraptr* printer.

You can also run the *Wraptr* in stand-alone mode by setting the *Connection Type* to *None*. In stand-alone mode, you must use an CompactFlash Memory Card to transfer print files from the computer to the *Wraptr*.

Operating Modes

Two operating modes are available: Auto and Manual. In *Auto* mode, the printer automatically advances to the next label after a print/wrap cycle. In *Manual* mode, you must advance the printer to the next label using the *Run* tab menu keys. Typically, the *Auto* mode is used.

File Location

Wraptor supports two file locations: *Memory Card* and *Internal Memory*.

- ◆ If you select *Memory Card*, the *File* tab menu displays print file names in the “Spool” subdirectory on the CompactFlash Memory Card.
- ◆ If you select *Internal Memory*, the *File* tab menu displays print file names in the *Wraptor*’s internal memory.

Remote Control

This button toggles between **Remote Control** and **Local Control**. *Remote Control* allows another computer to take control and operate the *Wraptor* via the *Wraptor Programming Language*. **Note:** You can also use the touch screen in remote control mode. See the *Wraptor Programmer’s Guide* for the details of the remote control feature. *Local Control* allows you to control the *Wraptor* via the touch screen.



NOTE: Remote control uses the serial port to communicate with the *Wraptor*. Therefore, the *Connection Type* cannot be *Serial* when remote control is in use.

5.3.6 IP Tab Commands

The *IP* tab menu (*Figure 21*) is used to set up communications between the computer and *Wraptor* unit on a local area network. The settings in this menu are required only for the *TCP Connection Type*, not for *Serial*, *USB*, or *None*.

Figure 21. IP Tab Menu



NOTE: Consult your network or site administrator to obtain the IP settings for DNS, WINS, Gateway, etc.

Wraptor supports two types of TCP connections:

- ◆ DHCP (or dynamic) addressing. DHCP addressing is simpler and requires less information to configure.
- ◆ Fixed IP addressing.

The following table lists the information required for *DHCP* and *Fixed IP* addressing schemes:

Settings	DHCP	Fixed IP
Printer Name	X	X
Desc	X	X
Port	X	X
Obtain DHCP Address	X	
Specify IP Address		X
DNS Number Menu		
WINS Server 1	X	
WINS Server 2	X ⁽²⁾	
DNS Server 1	X ⁽¹⁾	
DNS Server 2	X ⁽¹⁾⁽²⁾	
IP Number Menu		
IP Address		X
Subnet Mask		X
Gateway Address		X

(1) Typically networks use either WINS or DNS servers.

(2) The second WINS/DNS server is used as a redundant backup and may not be used at some locations.

Entering Text

To type the *Printer Name:* and *Desc:*, press the appropriate **Enter...** button. This displays a touch screen keyboard.

- ◆ Press the >> to insert a space.
- ◆ Press << to backspace.
- ◆ Press **LC** to change to lower case.
- ◆ Press **UC** to change to upper case.
- ◆ Press **OK** when you are finished.

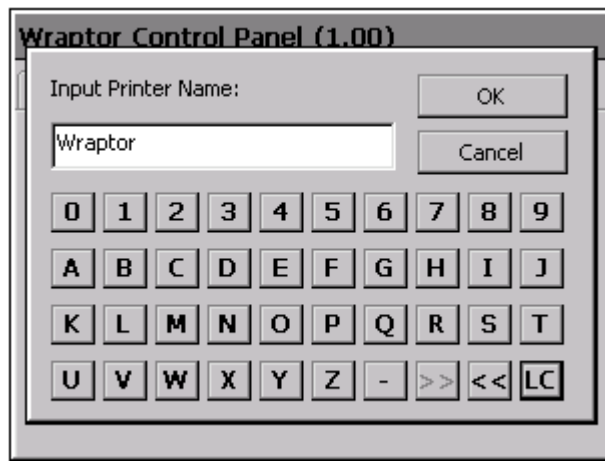


Figure 22. Touch Screen Keyboard Dialog

Description of Settings

Name: The computer will use this name to locate the printer on the network. The name must be unique if multiple *Wraprator* printers are in use on the network. Change the name by pressing the **Enter...** button to the right of the *Name* field.

Desc: The description setting provides a field to enter in extra information about the device like the location or the type of label material typically loaded in the printer. Change the description by pressing the **Enter...** button to the right of the *Desc* field.

Port: The port number is required for the TCP connection and you should always use the default value of 9100. Change the port number by pressing the **Enter** button to the right of the **Port** field.

Obtain DHCP Address: If you select this option (by pressing it with your finger), the network automatically configures the rest of the settings.

Specify IP Address: If you select this option (by pressing it with your finger), you must manually enter the IP address information in the *DNS Number* and *IP Number* dialogs.

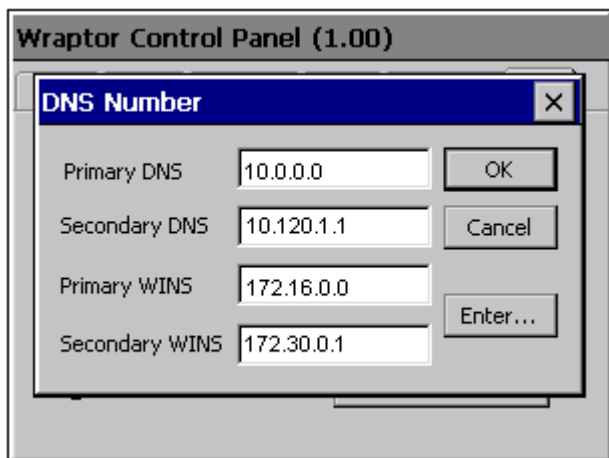


Figure 23. DNS/WINS Server Address Entry

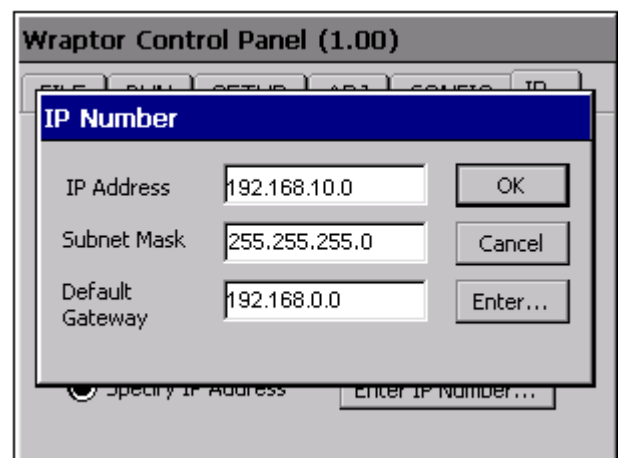


Figure 24. Fixed IP Address Entry

To enter an IP Address:

- ◆ Press **Enter DNS Number...** on the *IP* tab.
- ◆ The DNS Number dialog (*Figure 23*) appears.
- ◆ To enter an IP address:
 - Touch the field you want to enter the IP address for.
 - Press the **Enter** button to display the keypad (*Figure 25*).
 - Use the < and > keys to move from field to field with the IP address.
 - Use the numbers to change the address.
 - Press **OK** to save the address.
 - Press **Cancel** to exit without saving.
- ◆ Repeat this process for the other IP addresses in the *DNS Number* dialog.
- ◆ When you are finished with the *DNS Number* dialog, press **OK**.
- ◆ Press the **Enter IP Number...** button to display the *IP Number* dialog (*Figure 24*) appears. Repeat the process to enter the IP addresses in this dialog.

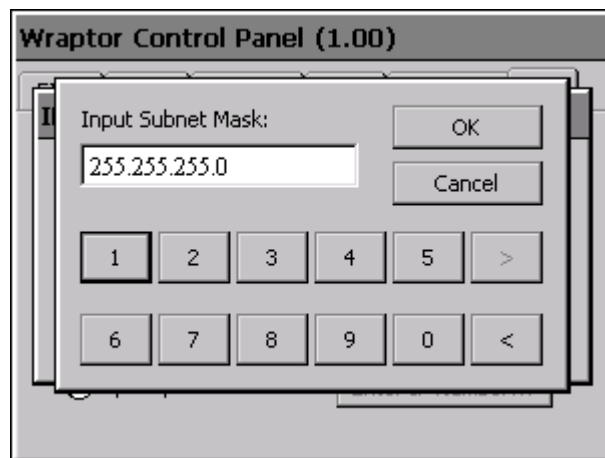


Figure 25. IP Number Keypad.

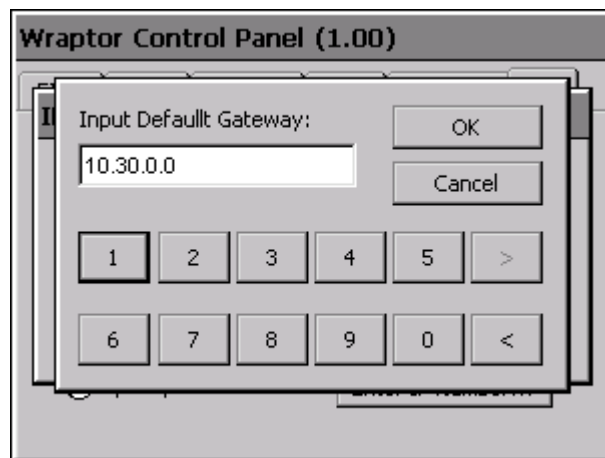


Figure 26. Default Gateway Entry

5.4 The Wraptor Utility Menu

The *Wraptor Utility Menu* allows you to display the *Wraptor Control Panel*, calibrate the touch screen, change the language and upgrade the system.

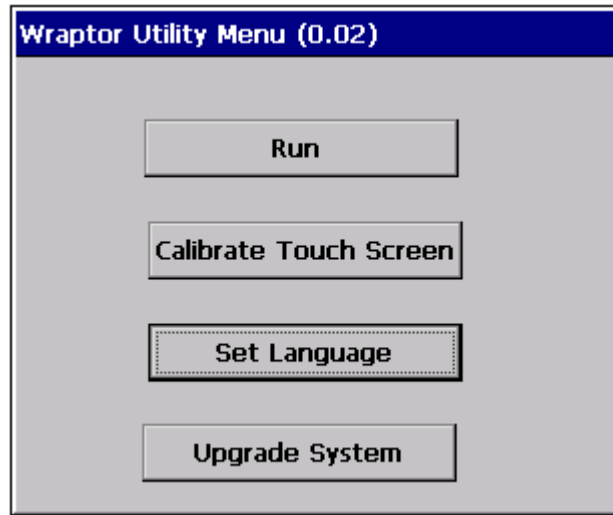


Figure 27. *Wraptor Utility Menu*

5.4.1 Run Command

The **Run** command displays the *Wraptor Control Panel*.

5.4.2 Calibrate Touch Screen Command

The **Calibrate Touch Screen** command allows you to recalibrate the touch screen.

The screen displays a series of five crosses. Hold your finger on each crosshair for a second or two and then release.



NOTE: Adjust the contrast of the LCD screen by turning the contrast control knob.

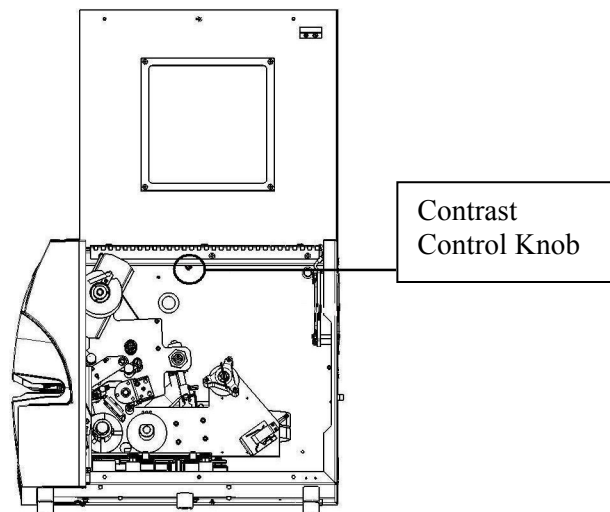


Figure 28. *Contrast Control Knob*

5.4.3 Set Language Command



Figure 29. Set Language Utility

The **Set Language** command changes the language for the printer. Press **Up** or **Down** to select the desired language and press **OK**.



NOTE: If you select a different language, you must restart the printer so the *Utility Menu* can reload with the new language.

5.4.4 Upgrade System Command

The **Upgrade System** command allows you to install upgraded *Wraptor* system software from the CompactFlash Memory Card. You must first transfer the updated *Wraptor* software to the CompactFlash Memory Card (see *Upgrade Printer Files* on page 49).

5.5 Power Off

Before turning the *Wraptor* printer's power off, return to the *Utility Menu* by pressing the **Exit** button on the *File* tab menu. Press the **Run** button to return to the *Wraptor Control Panel*.



NOTE: Returning to the *Utility Menu* before powering down saves the cycle count to permanent memory. The *Wraptor* saves cycle count data to permanent memory every 100 cycles or whenever the *Wraptor Utility Menu* is displayed.

Chapter 6 The File Management Utility

This section provides instructions on using the *File Management Utility* (FMU). The FMU is an application included with the *Wraptor* that allows you to transfer label files between your computer, the *Wraptor* and the *Wraptor's* CompactFlash Memory Card.

6.1 Launching the File Management Utility

Click the **File Management Utility** icon on your desktop to launch the application. The *File Management Utility* main menu appears:



Figure 30. File Management Utility Main Menu

6.2 Establishing Communication

To establish communication between your computer and the *Wraptor*:

- Use the *Port:* list box to select the appropriate port.
- Click on *Test Connection*.
- The *Status* field shows the communication status between the computer and printer



Figure 31. File Management Utility Communication Successful

If the *Communication Successful* message displays, proceed to the next section.

If the *Communication Failed* message displays, manually establish communication by completing the following steps:

- Check the *Port* setting to be sure it matches the *Wraptror* printer to which it is connected.
- Click the **Configure Port** button to verify the selected *Port*'s settings. This button directs you to the *Microsoft Windows Port Configuration* utility.
- Check the cable connections.
- Click the **Test Connection** button after all communication selections are verified.



NOTE: You may have to repeat this process if the *Port* or *Configure Port* selections are incorrect.

6.3 File Management Utility Options

The *File Management Utility* displays the following functions:

- **Transfer Files to Printer** lets you transfer files on your computer's hard drive to your printer's internal memory or CompactFlash Memory Card.
- **Transfer Files from Printer** lets you transfer files from either your printer's internal memory or CompactFlash Memory Card to your computer's hard drive.
- **Manage Printer Files** lets you administer (move, copy and delete) files on your printer's internal memory and on the external storage card inserted into your printer.
- **Upgrade Printer Files** lets you transfer updated *Wraptror* software to an CompactFlash Memory Card.



NOTE: If you print to FILE, print files are stored with a PRN extension in *C:\Program Files\Brady\LabelMark 3\Files*.

6.3.1 Transfer Files TO Printer

Transfer Files TO Printer allows you to send files from your computer to the *Wraptor's* internal memory or to an CompactFlash Memory Card in the *Wraptor* unit.

To transfer files to the printer, complete the following steps:

1. Select Transfer Files TO Printer.
2. Select an option from the Source File Type list to filter the displayed files.
3. Select an option from the **Source** list to choose the location of the file you want to delete or copy or move to the printer.



NOTE: The *Source* list displays the drives to which you have access (e.g. 3.5" floppy, hard drive, compact disc, etc.).

4. Select an option from the **Destination** list to display one of the following folders:
 - Wraptor\Internal (printer's internal memory)
 - Wraptor\External (printer's CompactFlash Memory Card)



NOTE: The *File Management Utility* automatically creates missing folders for you. For example, if your *Destination* is *External* and you select a *Source File Type* of *Graphics*, the FMU creates an *External\Graphics\My Graphics* folder for you.

5. Double-click a folder in the *Source* or *Destination* window and to display its folders and files. Only files of the selected *Source File Type* appear.
6. If desired, select **New Category** to create a new category (or folder) on the *Destination* drive.
7. Select the desired *print file* from the **Source** or **Destination**.
8. Select one of the following:
 - Select **Copy** to duplicate the file in the new location.
 - Select **Move** to relocate the file to the new location.

When the process completes, the status window displays. If the process fails, the *operation failed* message displays and one of the error messages displays:

- **Insufficient Space**—Displays if there is not enough memory within the destination to transfer the selected files.
- **Loss of Communication**—Displays if communication is lost between the attached printer and computer. You will need to exit the utility and follow the steps for connecting again.
- **Verify Valid Destination**—Displays if the entered file destination is incorrect. You will need to enter another destination for the files you have selected.



NOTE: Select **Refresh** to update the contents of the file directory structure as needed. (For example, use this button when you replace one CompactFlash Memory Card with another.)

9. Select **Back to Main Screen** to return to the main menu. Select **Exit** to close the *File Management Utility*.

6.3.2 Transfer Files FROM Printer

Transfer Files FROM Printer allows you to send files from the *Wraptor's* internal memory or CompactFlash Memory Card to your computer.

To transfer files from the printer, complete the following steps:

1. Select Transfer Files FROM Printer.
2. Select an option from the **Source File Type** list to filter the displayed files.
3. Select an option from the **Source** list to choose the location of the file you want to delete or copy or move to the computer.



NOTE: The *Source* list displays the locations to which you have access e.g. internal memory or CompactFlash Memory Card.

4. Select an option from the **Destination** list to display one of the following folders:



NOTE: The *Destination* list displays the drives to which you have access (e.g. 3.5" floppy, hard drive, compact disc, etc.).

5. Double-click a folder in the *Source* or *Destination* window and to display its folders and files. Only files of the selected *Source File Type* appear.
6. If desired, select **New Category** to create a new category (or folder) on the *Destination* drive.
7. Select the desired *print file* from the **Source** or **Destination**.
8. Select one of the following:
 - Select **Copy** to duplicate the file in the new location.
 - Select **Move** to relocate the file to the new location.

When the process completes, the status window displays. If the process fails, the *operation failed* message displays and one of the error messages displays:

- **Insufficient Space**—Displays if there is not enough memory within the destination to transfer the selected files.
- **Loss of Communication**—Displays if communication is lost between the attached printer and computer. You will need to exit the utility and follow the steps for connecting again.
- **Verify Valid Destination**—Displays if the entered file destination is incorrect. You will need to enter another destination for the files you have selected.



NOTE: Select **Refresh** to update the contents of the file directory structure as needed. (For example, use this button when you replace one memory storage card with another.)

9. Select **Back to Main Screen** to return to the main menu. Select **Exit** to close the *File Management Utility*.

6.3.3 Manage Printer Files

Manage Printer Files allows you to work with the files in the *Wraptor*'s internal memory or CompactFlash Memory Card. For example, you can move files from internal memory to the CompactFlash Memory Card for storage. Or, you can copy files from the CompactFlash Memory Card to internal memory for printing.

To manage printer files, complete the following steps:

1. Select **Manage Printer Files**.
2. Select an option from the **Source File Type** list to filter the displayed files.
3. Select an option from the **Source** list to choose the location of the file you want to delete or copy or move.



NOTE: The *Source* list displays the locations to which you have access e.g. internal memory or CompactFlash Memory Card.

4. Select an option from the **Destination** list to display one of the following folders:



NOTE: The *Destination* list displays the locations to which you have access e.g. internal memory or CompactFlash Memory Card.

5. Double-click a folder in the *Source* or *Destination* window and to display its folders and files. Only files of the selected *Source File Type* appear.
6. If desired, select **New Category** to create a new category (or folder) on the *Destination* drive.
7. Select the desired *print file* from the **Source** or **Destination**.
8. Select one of the following:
 - Select **Copy** to duplicate the file in the new location.
 - Select **Move** to relocate the file to the new location.
 - Select **Delete** to permanently erase the file from the *Source*.

The **Verify Delete** window displays, listing the file you are about to delete. To continue the delete process, select the **Yes** button. Select **No** to cancel the delete process.

When the process completes, the status window displays. If the process fails, the *operation failed* message displays and one of the error messages displays:

- **Insufficient Space**—Displays if there is not enough memory within the destination to transfer the selected files.
- **Loss of Communication**—Displays if communication is lost between the attached printer and computer. You will need to exit the utility and follow the steps for connecting again.
- **Verify Valid Destination**—Displays if the entered file destination is incorrect. You will need to enter another destination for the files you have selected.



NOTE: Select **Refresh** to update the contents of the file directory structure as needed. (For example, use this button when you replace one memory storage card with another.)

9. Select **Back to Main Screen** to return to the main menu. Select **Exit** to close the *File Management Utility*.

6.3.4 Upgrade Printer Files

The **Upgrade Printer Files** function lets you prepare a new release of the *Wraptor*'s software for installation. If your *Wraptor* is up-to-date, you will see a *No updates at this time* message. If your *Wraptor* software needs to be upgraded:

- ◆ A prompt appears asking if you want to obtain the updated software from the update web site or from a Brady-provided upgrade CD-ROM.
- ◆ The system then transfers the updated software to the CompactFlash Memory Card on the *Wraptor* unit.
- ◆ Run the **Upgrade System** command on the *Wraptor Utility* menu to install the new software on the *Wraptor* (see *Upgrade System Command* on page 43).

Chapter 7 Maintenance

The *Wraptor* requires periodic maintenance to ensure trouble-free operation. The system uses the *Cycle* count to determine when maintenance is required. A maintenance reminder dialog is displayed when the cycle interval is reached.

7.1 Cleaning

Perform the following cleaning routine when prompted to do so or at least every 5,000 labels to keep the *Wraptor* running at optimal performance. The unit comes with a cleaning kit which includes an applicator bottle and narrow cotton swabs. Fill the bottle with isopropyl alcohol (not included) and follow these instructions to clean the wrapper surface, printhead, rollers, and sensors.

7.1.1 Before You Begin

Prior to performing any cleaning or maintenance on the *Wraptor*, you must perform the following steps:

1. Press the **Load Labels** button on the *Setup* tab menu. This shuttles the printer to the “shuttle-back” position.
2. Power off and unplug the *Wraptor*.



WARNING: You must power off and unplug the *Wraptor* prior to performing any cleaning or maintenance!

3. Open the side door on the *Wraptor*.
4. Remove label material.
5. Close the side door.



NOTE: Remember to reload label material before attempting to print/wrap labels.

7.1.2 Cleaning the Wrapper Surface

1. Follow the steps in *Before You Begin* on page 50 of this guide.
2. Open the front (clear) door on the *Wraptor*.
3. Dip a cotton swab in the isopropyl alcohol.
4. Using the moistened swab, clean the wrapper surface. Make sure the wrapper is free of dust, debris and label adhesive build-up.



NOTE: Failure to remove adhesive build-up will cause labels to jam on the wrapper surface.

5. Close the front door.

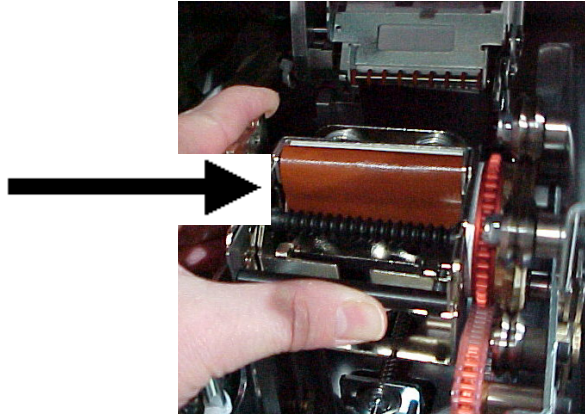


Figure 32. Clean Wrapper Surface

7.1.3 Cleaning the Printhead

1. Follow the steps in *Before You Begin* on page 50 of this guide.
2. Open the side door on the *Wraptor*.
3. Dip a cotton swab in the isopropyl alcohol.
4. Using the moistened swab, thoroughly clean the top surface of the printhead.
5. Close the side door.

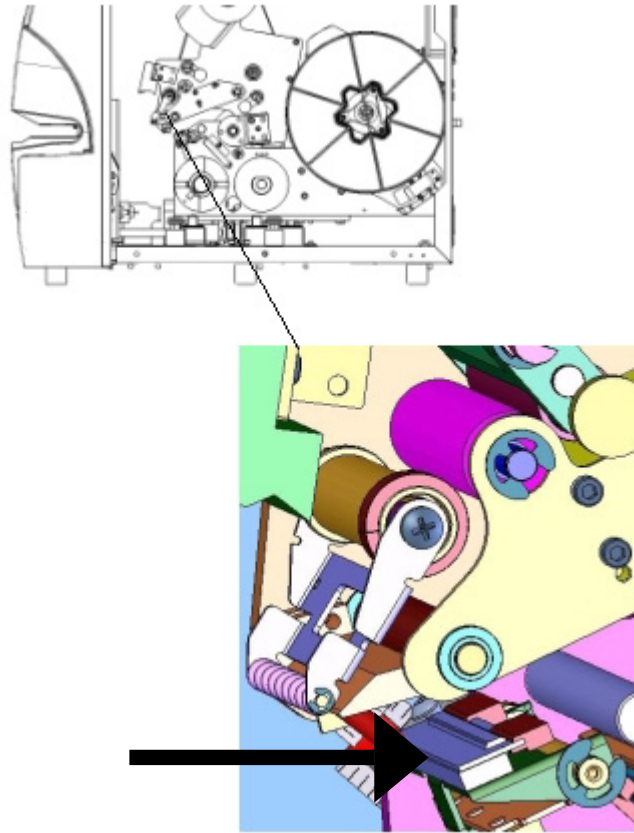


Figure 33. Clean Printhead

7.1.4 Cleaning the Rollers

Follow these steps to clean the rollers:

1. Follow the steps in ***Before You Begin*** on page **50** of this guide.
2. Open the side door on the *Wraptor*.
3. Dip a cotton swab in the isopropyl alcohol.
4. Using the moistened swab, clean the rollers (drive rollers, nip rollers, and guide rollers). Make sure each roller is free of dust, debris and label adhesive.



NOTE: Drive rollers can be advanced manually for cleaning by turning the large pulley behind the label rewind hub.



NOTE: Use as many swabs as necessary so that you are always using a fairly clean swab.

5. Close the side door.

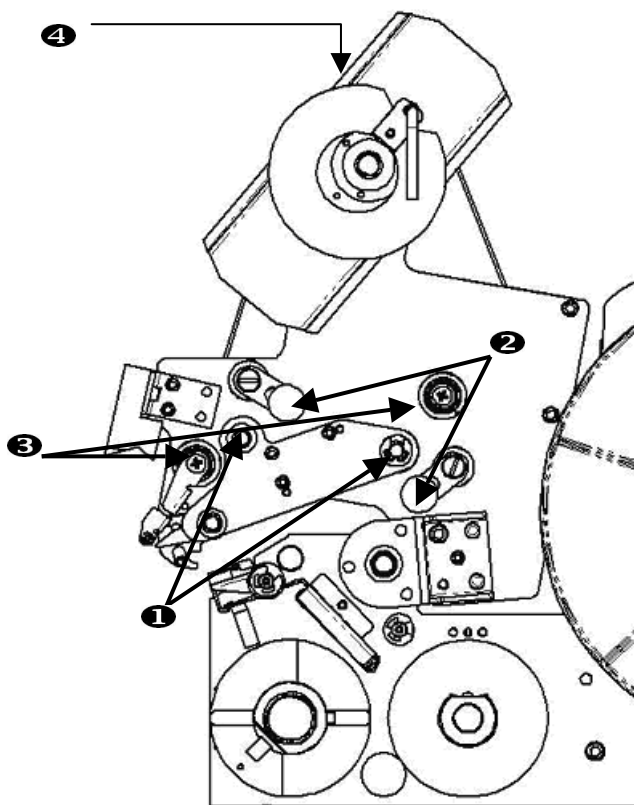


Figure 34. Clean Rollers

1. Drive Rollers
2. Nip Rollers
3. Guide Rollers
4. Pulley

7.1.5 Cleaning the V-Roller

1. Follow the steps in ***Before You Begin*** on page 50 of this guide.
2. Open the front (clear) door.
3. Dip a cotton swab in the isopropyl alcohol.
4. Using the moistened swab, clean all label adhesive from the serrated v-roller inside the wrapper with a clean swab.
5. Close the front door.

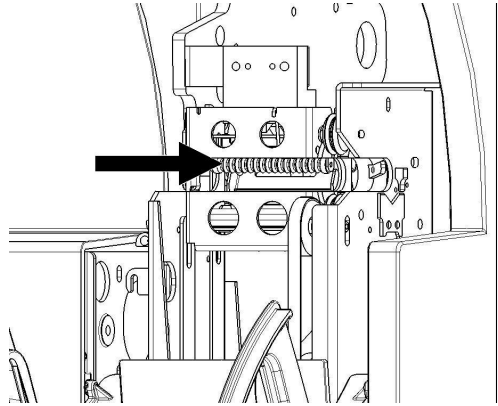


Figure 35. Clean V-Rollers

7.1.6 Cleaning the Sensors

The wrapper contains five sensors that will require occasional cleaning. To do this:

1. Follow the steps in ***Before You Begin*** on page 50 of this guide.
2. Open the front and side doors of the unit.
3. Locate the **label notch sensor** using the graphic below as your guide.
4. Clean the label notch sensor with a clean swab dipped in isopropyl alcohol.

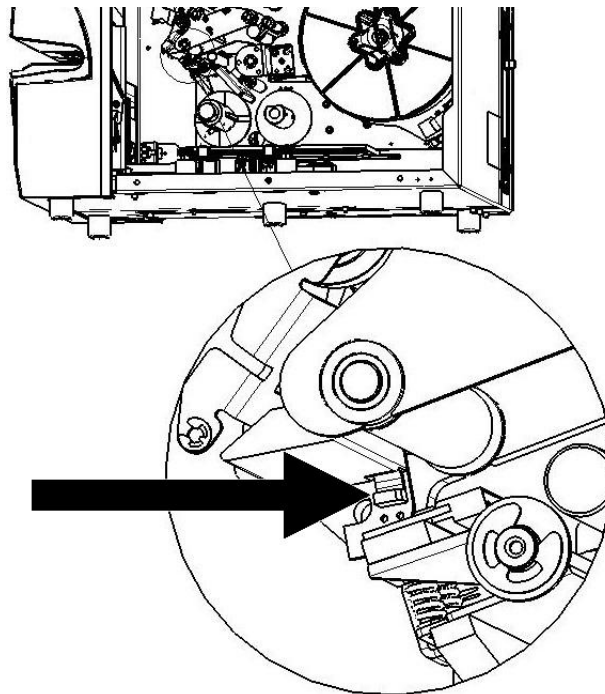


Figure 36. Clean Label Notch Sensor

5. Continue to clean the other sensors as needed.

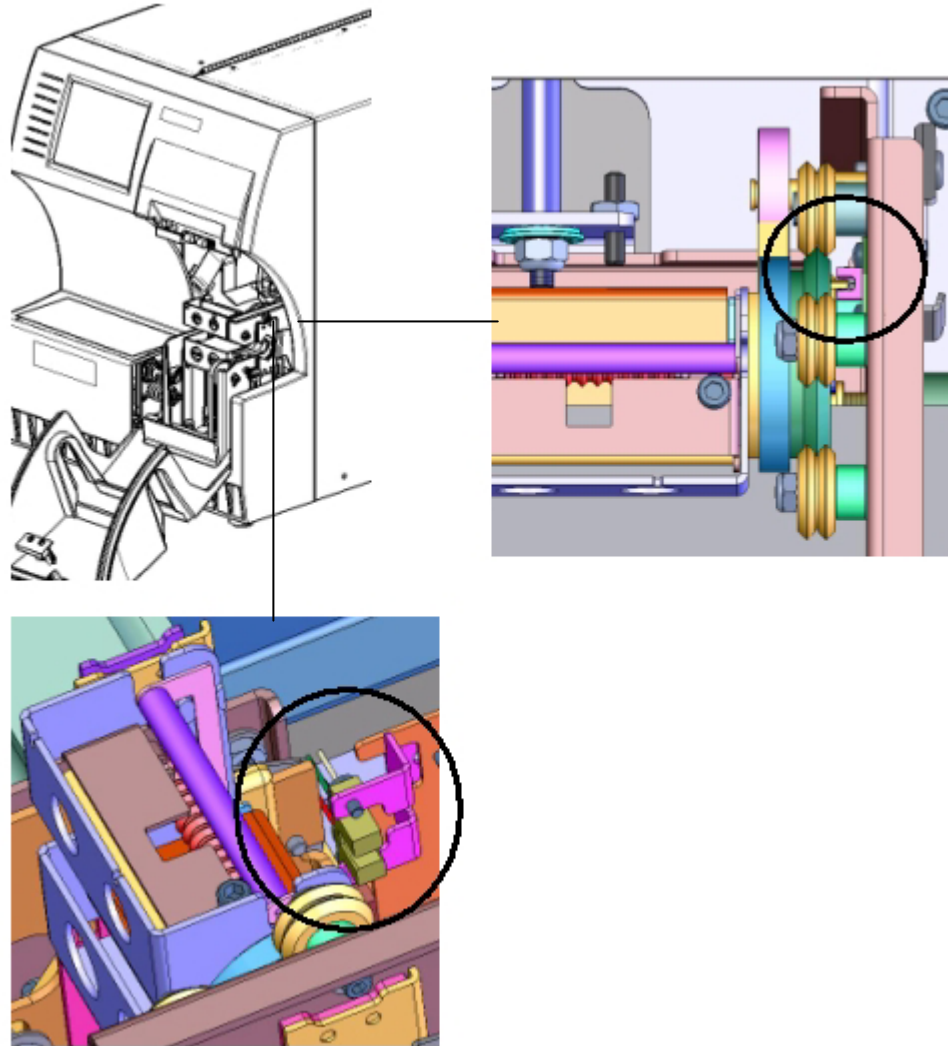


Figure 37. Wrapper and Shuttle Home Sensors

- The **wrapper home sensor** is located inside the front door to the right of the wrapper. You will need to rotate the wrapper so that its opening is near the sensor.
- The **shuttle home sensor** is located in front of the printer mechanism.

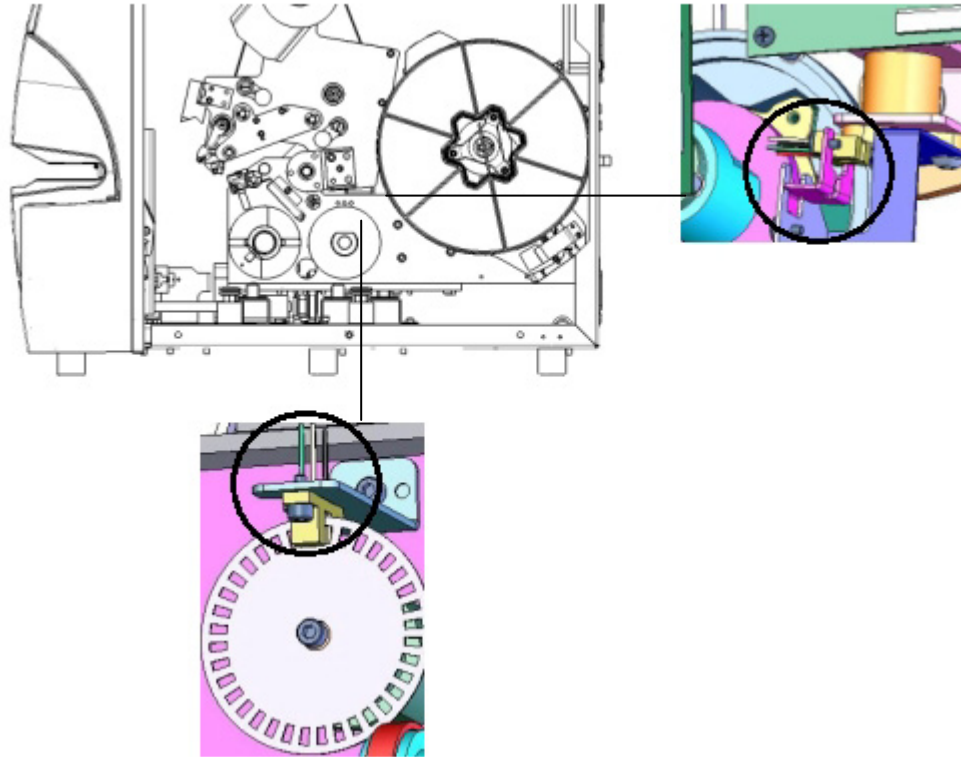


Figure 38. Tilt and Ribbon Out Sensors

- The **tilt sensor** is located behind the printer mechanism on the upper right-hand side.
 - The **ribbon out sensor** is located behind the ribbon path. The ribbon sensor should rarely, if ever, require cleaning.
6. Close the unit doors.

7.2 Lubrication

Some *Wraptor* parts will need occasional lubrication in order to keep the unit running smoothly. It is recommended that you check the following items for proper lubrication every 6 months to one year.



NOTE: Do not over-lubricate any of the parts. Make sure to wipe off any excess oil or grease.



NOTE: The following procedures require that you remove the label material and/or ribbon prior to performing the maintenance. Remember to reload material before attempting to print/wrap labels.

7.2.1 Oiling the Slide Track

The slide track carries the printer back and forth. Although it comes pre-oiled, you should inspect it and re-oil as needed.

1. Press the **Load Labels** button on the *Setup* tab menu. This shuttles the printer to the “shuttle-back” position.
2. Power off and unplug the *Wraptor*.

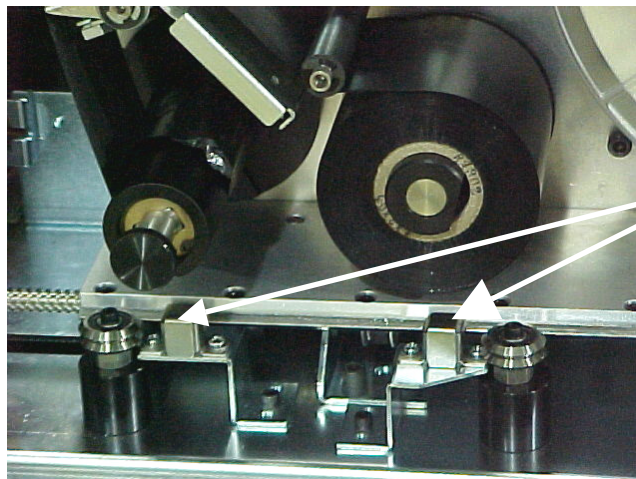


WARNING: You must power off and unplug the *Wraptor* prior to performing any cleaning or maintenance!

3. Open the side door on the *Wraptor*.
4. Remove the ribbon.
5. Inspect the two oilers (shown below) on the outside of the slide track.
6. If dry, add a few drops of light machine oil.



NOTE: There are **four** oilers. Two are on the outside of the slide track (shown below), and two are located opposite these on the inside of the slide track.



Oilers
(Outside)

Figure 39. Oil Slide Track

7. Inspect the two oilers on the inside of the slide track: To access the inside oilers:
 - Manually shuttle the slide track back until the access hole (on the bottom of the track) is aligned with the front/inside oiler.

- Manually shuttle the slide track forward until the back/inside oiler is exposed.
8. Inspect and add a few drops of light machine oil to each oiler as needed.
 9. Close the side door.

7.2.2 Clean and Re-grease the Wrapper Hub

1. Press the **Load Labels** button on the *Setup* tab menu. This shuttles the printer to the “shuttle-back” position.
2. Power off and unplug the *Wraptor*.



WARNING: You must power off and unplug the *Wraptor* prior to performing any cleaning or maintenance!

3. Open the front (clear) door on the *Wraptor*.
4. Clean the two surfaces of the “V” on the wrapper hub with a soft, lint-free cloth or a clean swab dipped in isopropyl alcohol.
5. Apply high pressure grease to a soft, lint-free cloth or a clean swab.
6. Using the greased cloth or swab, apply a very thin layer of grease to the wrapper hub as you rotate it. Make sure not to get any grease in the opening of the hub.
7. Close the front door.

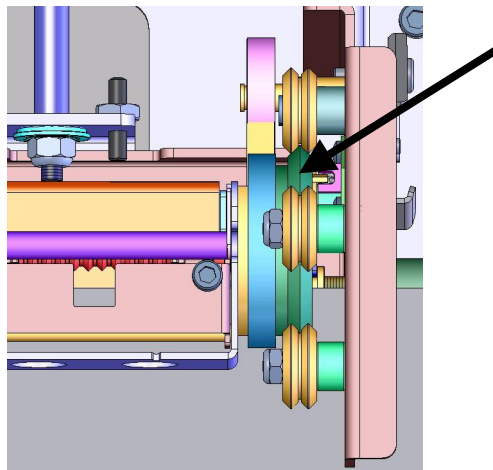


Figure 40. *Clean and Grease Wrapper Hub*

7.3 Replace Wrapper Foam V-Block

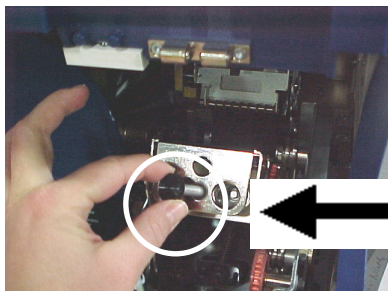
The Wrapper Foam V-Block is a replacement part that you can order. *See Accessories on page 65.* To replace the Wrapper Foam V-Block:

1. Press the **Load Labels** button on the *Setup* tab menu. This shuttles the printer to the “shuttle-back” position.
2. Power off and unplug the *Wraptor*.



WARNING: You must power off and unplug the *Wraptor* prior to performing any cleaning or maintenance!

3. Open the front (clear) cover on the *Wraptor*.
4. Rotate wrapper so that the opening is in the up position.
5. Unscrew the retaining post that keeps the wrapper in place.



Retaining Post

6. Reach behind the wrapper and jog the spring-loaded slide until the Wrapper Foam V-Block falls out.
7. Separate the foam V-Block from the stamping.
8. Discard the old foam V-Block, and insert a new V-Block into the stamping.
9. Rotate the wrapper so that the opening is in the down position.
10. Replace the V-block/stamping. Insert so nubs in stamping are positioned through the holes in the frame of the slider.
11. Rotate the wrapper so that the opening is in the up position.
12. Replace the retaining post.
13. Close the front cover.

7.4 Replace Printhead Assembly

The Printhead assembly is a replacement part that you can order. *See Accessories on page 65.* To remove the old printhead assembly:

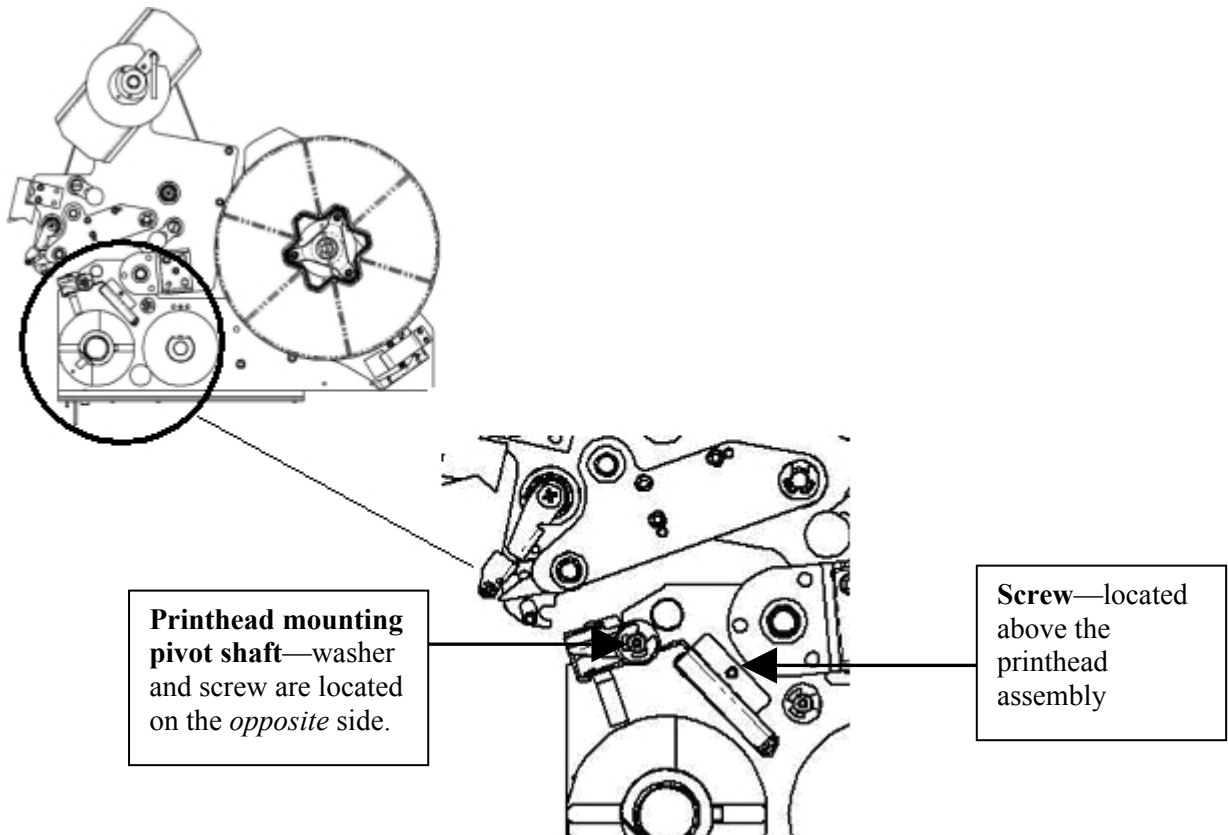
1. Press the **Load Labels** button on the *Setup* tab menu. This shuttles the printer to the “shuttle-back” position.
2. Power off and unplug the *Wraptor*.



WARNING: You must power off and unplug the *Wraptor* prior to performing any cleaning or maintenance!

3. Open the side door on the *Wraptor*.
4. Remove label material and ribbon.

- Using a 7/64" Allen wrench, remove the screw that is located above the printhead assembly stamping. **Save the screw for installation of the new assembly.**



- Using a 5/32" Allen wrench, remove the washer and screw located *opposite* the printhead mounting pivot shaft. You will need to reach around to the back of the printer to remove the washer and screw. **Save the washer and screw for installation of the new assembly.**
- Remove the printhead assembly. Make sure that the printhead ribbon cable is eased part way through the cable slot.
- Remove the strain relief tape (if present) from the printhead ribbon cable.
- Disconnect the printhead ribbon cable from the printhead assembly, noting the orientation of the cable.



NOTE: It is important to note the orientation of the printhead ribbon cable when disconnecting it as you will need to connect it the same way.

To install the new printhead assembly:

- Connect the printhead ribbon cable to the printhead assembly, orientating it the same way as it was when removed. (See Step 9 above.)
- Replace strain relief tape if it was present on the printhead ribbon cable at the time it was disconnected. (See Step 8 above.)
- Install the printhead assembly, ensuring that the printhead ribbon cable and connector are eased back through the cable slot.
- Using a 5/32" Allen wrench, replace the washer and screw located *opposite* the printhead mounting pivot shaft.
- Using a 7/64" Allen wrench, replace the screw that is located above the printhead assembly stamping.
- Replace label material and ribbon, and close the side door.

Chapter 8 Error Messages

Error Message	Possible Cause/Resolution
Cannot change connection to serial port. It's used by remote control.	Cause: User tried to connect to printer from computer using Connection Type = Serial in the <i>Config</i> tab while the printer is in remote control mode. Resolution: Shut down remote control mode by pressing the Local Control button in the <i>Config</i> tab. Then select the <i>Serial</i> connection type.
Cannot go to another label.	Cause: Error occurred in moving to another label in the print file. Resolution: Reopen the file and try again. If problem persists the PRN file may be corrupt.
Cannot read Wraptor settings from the registry.	Cause: Registry settings are corrupted. Resolution: Stop and restart the program. Default settings will be automatically re-initialized.
Cannot save Wraptor settings to the registry.	Cause: Persistent storage manager not working. Resolution: Contact Brady Technical Support.
Check Labels	Cause: Out of labels. Resolution: Load new labels in the <i>Wraptor</i> unit.
Check Ribbon	Cause: Out of ribbon. Resolution: Load a new ribbon in the <i>Wraptor</i> unit.
Command Not Recognized	Cause: Print file contains a command that is not recognized. Resolution: Reprint the file from LabelMark and try again..
Door is Open	Cause: The door is open. Resolution: Close the side door.
Door is Open. This operation is not allowed with door open.	Cause: The user pressed the Load Labels, Load Ribbon, Clear Jam, or Online button with the unit door open. Resolution: Close the door.
Each segment of an IP address must be less than 255.	Cause: IP Address segment entered by the user is greater than 255. Resolution: Enter a valid segment number.
Error Reading Touch Memory	Cause: The <i>Wraptor's</i> material reader cannot read the touch memory button. Resolution: Confirm that roll of labels is correctly installed and the touch memory button is in the material reader.
Invalid Name: Names Must use (A-Z) or (a-z) or (0-9) or Hyphens.	Cause: Printer Name contains an invalid character. Resolution: Enter a different printer name using valid characters.
Firmware Memory Full	Cause: The <i>Wraptor's</i> internal memory is full.

Error Message	Possible Cause/Resolution
	CompactFlash Memory Card is full. Resolution: Use the <i>File Management Utility</i> to move some print files out of the <i>Wraptor's</i> internal memory to make room for the new file.
Labels not present or bad Touch Cell	Cause: <i>Wraptor</i> cannot sense the loaded labels. Resolution: Confirm that roll of labels is correctly installed and the touch memory button is in the material reader.
Print file has invalid command.	Cause: The printer firmware generates this message. Resolution: The most likely cause is lost data. Try printing the file again. If problem persists contact Brady Technical Support.
Print Head is too hot	Cause: Print head is too hot. Resolution: Open the print head and allow it to cool down.
Print Head Open	Cause: The print head is open. Resolution: Press the Online button on the <i>Setup</i> tab.
Remote Device is not receiving Data. Please Check Remote Connection.	Cause: <i>Wraptor</i> software is in remote control and no connection is available to an external device. Can also occur if printer is turned off when in remote control. Printer will start up in Remote Control mode later when printer is turned back on. Resolution: If a remote control type connection is desired ensure cable and remote device are online. If a remote connection is not desired machine will revert automatically to local control on this error.
Serial Port Time Out	Cause: <i>Wraptor</i> had a problem sending a label to the print/wrap mechanism. Resolution: Reopen print file and try again.
Set focus on an input text box first.	Cause: User selected an Enter... button before selecting a field in the dialog. Resolution: Select a field and then select the Enter... button.
Shuttle is not in home position	Cause: Shuttle mechanism is not in home position. Resolution: Press the Online button on the <i>Setup</i> tab.
Slide is not in dispense position	Cause: Slide/Shuttle error Resolution: Press the Online button on the <i>Setup</i> tab.
The file %s cannot be opened.	Cause: If <i>Wraptor</i> is set to use an CompactFlash Memory Card, the file was not found. Resolution: CompactFlash Memory Card may have been removed prior to opening a file. Re-insert CompactFlash Memory Card and try again.
The file is too large to open.	Cause: The print file the user is attempting to open has too many labels in it. Resolution: Reduce the number of labels in the file

Error Message	Possible Cause/Resolution
	and reprint the job.
The IP address is invalid.	Cause: The user entered an invalid IP address. Resolution: Check for proper IP address format: xxx.xxx.xxx.xxx where xxx can be a number from 1 to 255.
The label index is out of range.	Cause: Error occurred in moving through label file. Possible corruption to print file. Resolution: Reload file and try again.
The label number must be between 1 and %d.	Cause: User entered a label number outside the range of labels in the opened file in the Go To Label dialog. Resolution: Enter a number in the label range. Label range is displayed in the <i>Run</i> tab.
The port number must be a positive integer between 1 and 9999.	Cause: Printer Port number must be greater than zero and less than 10000. The default port number is 9100. Resolution: Use default number of 9100.
The selected file %s is read-only. Do you want to delete it?	Cause: The user pressed the delete button and the selected file has a read-only attribute. Resolution: It is OK to delete Read-Only files. This message simply distinguished them from non-Read-Only files.
The print file uses label size: %s. A different label size is loaded in the printer. Do you want to proceed anyway?	Cause: User opened a print file designed with a different label size than currently loaded in the printer. Resolution: Override and proceed with caution or cancel open operation and load correct label material in printer before running print job.
The serial port is currently used for PC connection. Please change connection type first.	Cause: User try to establish a remote control connection with the <i>Connection Type</i> set to <i>Serial</i> in the <i>Config</i> tab. Resolution: Remote control and <i>Connection Type</i> = serial cannot be used at the same time. Select a different <i>Connection Type</i> in the <i>Config</i> tab menu before attempting to use remote control.
The serial port is currently used for Remote Control. Please change to Local Control first.	Cause: See “Cannot change connection to serial port. It's used by remote control.” Resolution: Shut down remote control mode by pressing the Local Control button in the <i>Config</i> tab. Then select the <i>Serial</i> connection type.
The total Left Margin Offset setting of %d pixels is out of range. Upper limit of 90 pixels is used.	Cause: Remote Control Message. Parameter Out of Range. Resolution: Reduce Adjustment to be within range allowed.
The total Left Margin Offset setting of %d pixels is out of range. Upper limit of -90 pixels is used.	Cause: Remote Control Message. Parameter Out of Range. Resolution: Reduce Adjustment to be within range allowed.

Error Message	Possible Cause/Resolution
The total Peel to Feed setting of %d pixels is out of range. Upper limit of 90 pixels is used.	Cause: Remote Control Message. Parameter Out of Range. Resolution: Reduce Adjustment to be within range allowed.
The total Peel to Feed setting of %d pixels is out of range. Upper limit of -90 pixels is used.	Cause: Remote Control Message. Parameter Out of Range. Resolution: Reduce Adjustment to be within range allowed.
The total Print Density setting of %d is out of range. Upper limit of 10 is used.	Cause: Remote Control Message. Parameter Out of Range. Resolution: Reduce Adjustment to be within range allowed.
The total Print Density setting of %d is out of range. Upper limit of 10 is used.	Cause: Remote Control Message. Parameter Out of Range. Resolution: Reduce Adjustment to be within range allowed.
The total Top Margin Offset setting of %d pixels is out of range. Upper limit of 90 pixels is used.	Cause: Remote Control Message. Parameter Out of Range. Resolution: Reduce Adjustment to be within range allowed.
The total Top Margin Offset setting of %d pixels is out of range. Upper limit of -90 pixels is used.	Cause: Remote Control Message. Parameter Out of Range. Resolution: Reduce Adjustment to be within range allowed.
This is an invalid print file.	Cause: Print file is corrupt or wrong version. Resolution: Reprint the label file from the computer. Call Brady Technical Support if this does not resolve the problem.
Wrapper mechanism is not in home position	Cause: Wrapper mechanism is not in home position. Resolution: Press the Online button on the <i>Setup</i> tab.

Chapter 9 Accessories Parts List

Following is a list of parts and accessories that can be ordered for the *Wraptor*:

9.1 Consumable material

Product ID	Label Part	Width	Height
Y381713	Wraptor Self-Lam	.5"	.75"
Y381714	Wraptor Self-Lam	1"	1"
Y381715	Wraptor Self-Lam	1"	1.25"
Y381716	Wraptor Self-Lam	1"	1.5"
Y381717	Wraptor Self-Lam	1.5"	2.5"
Y381718	Wraptor Self-Lam	2"	3"
Y381719	Wraptor Nylon Cloth	.5"	.75"
Y381720	Wraptor Nylon Cloth	1"	1.5"
Y381721	Wraptor Nylon Cloth	2"	2"
Y31131	R4311	1"	984'
Y36204	R4302	2.36"	984'
*Y381924	Wraptor Self-Lam Unpkg.	1"	1.5"

*This is the unpackaged material that comes with the *Wraptor*.

9.2 Accessories

Product ID	Description
Y90840	32 MB CompactFlash Memory Card
Y367839	CompactFlash Adapter Card
Y60449	Cleaning Kit
Y362539	Printhead
Y389517	Assy-Wrapper Tarp (Wrapper Foam V-Block, sub-assembly)