

MEGAPIX

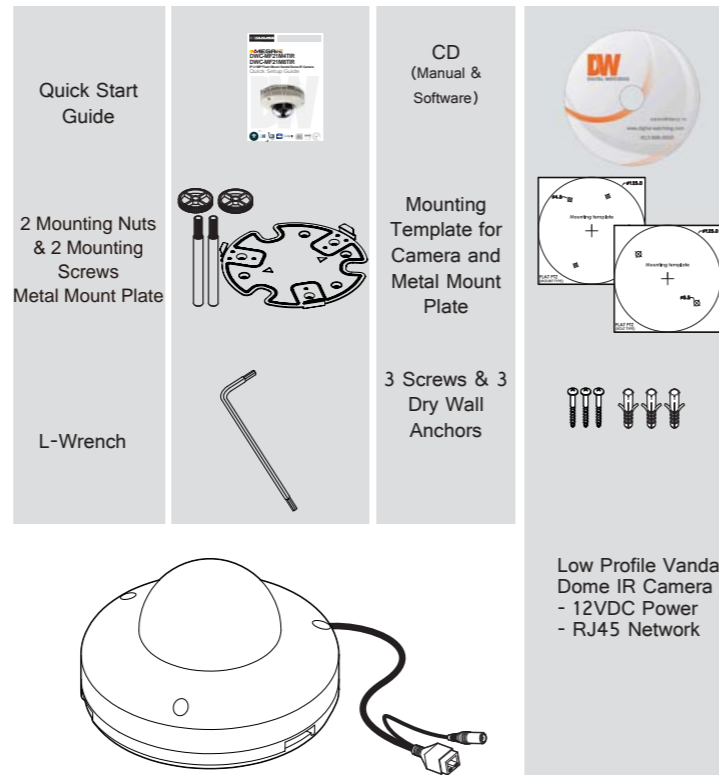
DWC-MF21M4TIR
DWC-MF21M8TIR

IP 2.1MP Low Profile Vandal Dome IR Camera
Quick Setup Guide



PREPARATION

The following items are included with your MEGAPIX Camera



Thank you for purchasing Digital Watchdog's MEGAPIX Flat Vandal Dome Camera. Before installing the camera, please verify your model and read this guide carefully.

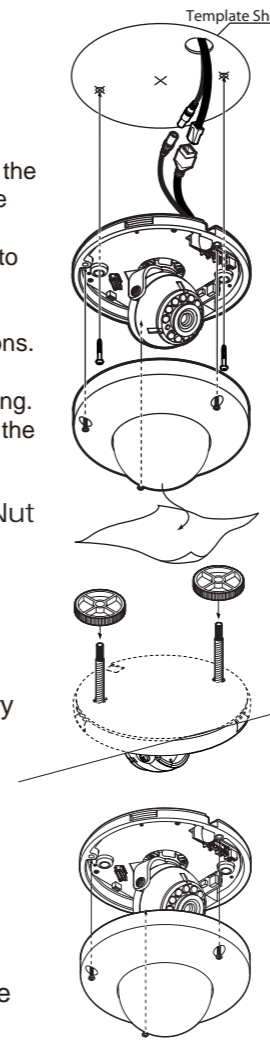
INSTALLATION

Easy Camera Installation

1. Detach the camera's cover dome from the camera's module by unscrewing the three cover dome screws using the L-Wrench.
2. Use the camera or mounting template to mark and drill the necessary holes in the wall or ceiling.
3. Pull wires through and make connections.
4. Using three (3) included screws mount and secure the camera to the wall or ceiling.
5. Secure the camera's cover dome onto the camera base to complete the installation.

Installation Using Mount Bolt & Nut

1. Detach the camera's cover dome from the camera's module by unscrewing the three cover dome screws.
2. Using the camera or mounting template, mark and drill the necessary holes in the wall or ceiling.
3. Secure the two long mounting screws to the camera's base.
4. Pull wires through and make connections.
5. Mount the camera to the mounting surface using the 2 mounting nuts.
6. Secure the camera's cover dome onto the camera base to complete the installation.



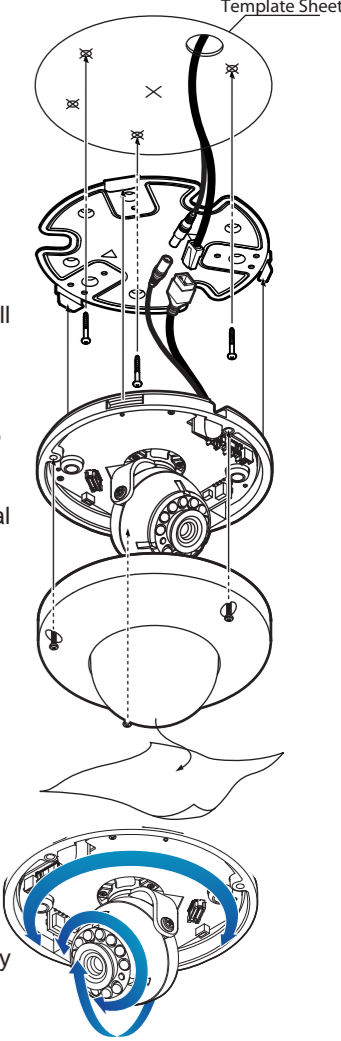
INSTALLATION

Installation Using Mount Plate

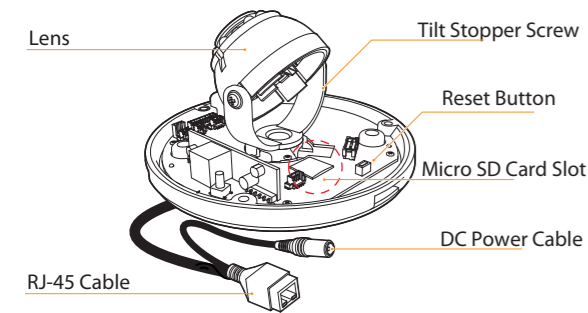
1. Detach the camera's cover dome from the camera's module by unscrewing the three cover dome screws.
2. Using the metal mount plate, mark and drill the necessary holes in the wall or ceiling.
3. Pull wires through and make connections.
4. Using the three (3) included screws, mount and secure the camera to the wall or ceiling.
5. Attach the camera base to the metal mount by snapping it into place using the two metal handles.
6. Secure the camera's cover dome onto the camera base to complete the installation.

Adjusting the Camera's Angle

- To adjust the camera's orientation:
1. Loosen the tilt stopper screw at the base of the camera's Gimbals by rotating it counter clock-wise.
 2. Move the camera to the desired angle.
 3. Secure the camera's lens position by screwing the tilt stopper screw clock-wise.



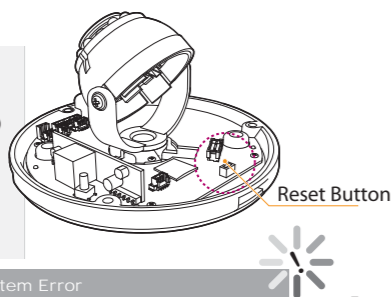
Parts and Description



Resetting the Camera

Pressing the reset button on the camera's control board for five (5) seconds will initialize all environmental variables to factory default. Previous setup for IP default, time, etcetera will be deleted. If a system IP address is lost, reset the camera back to factory default. The following are the default network settings:

IP Mode	DHCP
IP Address	192.168.1.123
Subnet Mask	255.255.255.0
Gateway	192.168.1.123
Command Port	7000
HTTP Port	80
Live Port	7001



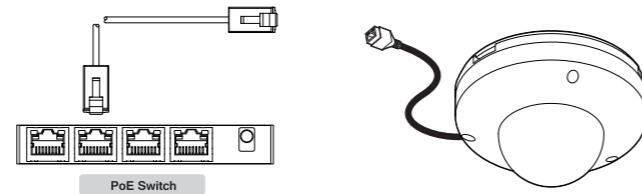
Frequent use may cause a System Error

Network Connection

There are two options.*

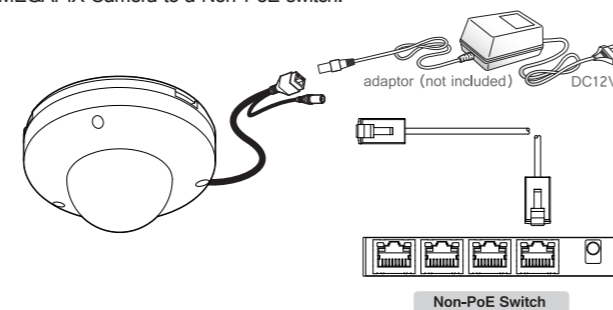
1 Using a PoE-Enabled Switch

The MEGAPIX Camera is PoE-compliant, allowing transmission of power and data via a single ethernet cable. Follow the illustrations below to connect the camera to a PoE-enabled switch using an ethernet cable.



2 Using a Non-PoE Switch

If a PoE-enabled switch is not used, use a power adaptor to connect the MEGAPIX Camera to a Non-PoE switch.



Recommended Settings

Camera Default Color Settings

Please refer to the table below for the default camera settings. You can reset the camera's settings to its default color settings by pressing the 'Default' button at the bottom of the screen.

White Balance	
Mode	Auto
Manual Exposure	
Brightness	10
Shutter Mode	Auto
Digital Slow Shutter	Off
AGC Gain	41dB
WDR/BLC/HLC Mode	Off
Day & Night	
Mode	Auto
Switching from Color to BW	10
Switching from BW to Color	10
Extra Setting	
Frequency	60Hz
Defog	Off
IR LED Mode	Active
LED Saturation	2
Chroma	10
Sharpness	5
Mirror	Off
Flip	Off
Digital Noise Reduction	Middle

SPECIFICATIONS

Camera Specifications

IMAGE	
Image Sensor	1/2.8" Sony CMOS Sensor
Effective Pixels	1920 (H) X 1080 (V)
Minimum Scene Illumination	F2.0 (30IRE): 2.4 Lux [Color], F2.0 (30IRE): 0.5 Lux [B/W]
LENS	
Focal Length	4.0mm [DWC-MF21M4TIR] / 8.0mm [DWC-MF21M8TIR]
Zoom	12x Digital Zoom
Lens Type	Fixed Lens
IR Distance	30ft Range IR
Angle of View	Horizontal: 42° Wide Angle
NETWORK	
LAN	802.3 Compliance 10/100 LAN
Video Compression Type	H.264, MPEG4, MJPEG (Super Fine-Low)
Resolution	1920X1080 (16:9) ~ 320X240 (4:3)
Frame Rate	Up to 30fps at All Resolutions
Streaming Capability	Dual-Stream at Different Rates and Resolutions
IP	IPv4, IPv6
Protocol	TCP/IP, HTTP, DHCP, PPPoE, ICMP, ARP, RARP, RTSP, NTP, UDP, Multicast
Maximum User Access	5 Users
ONVIF Conformance	Yes
Web Viewer	OS: Windows XP / Vista / 7, MAC OS Browser: Internet Explorer, Chrome, Firefox, Safari
Video Management Software	NxMS, DW Spectrum, Pivot
Memory Slot	24 hours recording to Micro SDHC Card (4GB-32GB) Card Not Included*
ENVIRONMENTAL	
Operating Temperature/ Humidity	-10°C ~ 50°C (14°F ~ 122°F)
Operating Humidity	Less than 90% (Non-Condensing)
IP Rating	IP66 (Protects against dust and high pressure water)
Other Certifications	CE, FCC, RoHS
ELECTRICAL	
Power Requirement	DC 12V, PoE (IEEE802.3af Class 2)
Power Consumption	3.6W, 300mA / LED ON: 4.3W, 360mA
MECHANICAL	
Material	Aluminum Housing
Dimensions	125 x 74.3 mm (4.9 X 2.9 in)
Weight	1.0 lbs

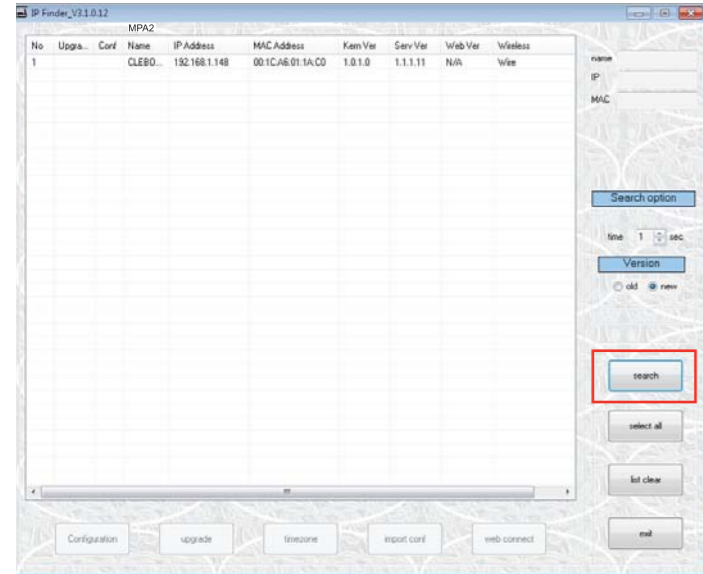
*Specification is subject to change without prior notice.

MEGApix CAMERA SETUP

Installing IP Finder

IP Finder searches for all the available network devices on your local area network.

- 1 Install **IP Finder** to find your MEGApix Camera on the local network. The **IP Finder** software is on the included mini-CD. Run **IP Finder** and install onto your PC.
- 2 When setup is complete, launch the **IP Finder** software.
- 3 To find your MEGApix camera, click **Search** button. Your MEGApix camera will appear as "DWC-MF21M4TIR."
- 4 To access the camera directly via Internet Explorer, select the desired device and click **Web Connect**.
- 5 To change basic network settings through the IP Finder software, select the desired device and click **Configuration**.



Setting the Camera on IP Finder

Set the Camera for Internal Use

If you wish to connect your MEGApix Camera internally from within the same network:

- 1 Find your MEGApix Camera on IP Finder software and click **Configuration**.
- 2 Select an IP Configuration Mode - **DHCP**, **PPPoE**, or **Static** - that is available to you. Recommended Setting is **DHCP**.*
- 3 If you wish to use **DDNS**, select the **Use DDNS** option. See page 10 for further information.
- 4 When the setup is complete, select **Apply**.
- 5 Then, select **Reboot** button. The rebooting process usually takes up to a minute.
- 6 Select **Exit**.
- 7 On the IP Finder window, select **Search** and confirm that your changes have been made.

Set the Camera for External Use

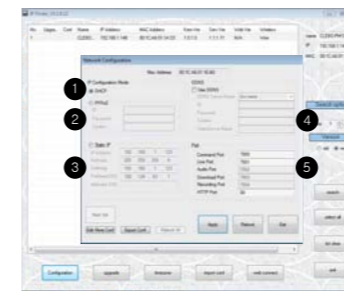
If you wish to connect your MEGApix Camera to an external network, please use Static IP.

- 1 Find your MEGApix Camera on IP Finder software and click **Configuration**.
- 2 Select **Static IP** Configuration Mode.
- 3 If you wish to use **DDNS**, select the **Use DDNS** option. See page 10 for further information.
- 4 When the setup is complete, select **Apply**.
- 5 Then, select **Reboot** button. The rebooting process usually takes up to a minute.
- 6 Select **Exit**.
- 7 On the IP Finder window, select **Search** and confirm that your changes have been made.

10

Setting the Camera on IP Finder

User can use the IP Finder software to setup the basic network settings.



- 1 **DHCP**: If **DHCP** is selected, an IP address will automatically be assigned to the camera. If your network does not support **DHCP**, a default IP address and subnet mask will automatically be assigned.
- 2 **PPPoE**: Select this option, when you use WAN service or a **PPPoE**-based internet service. Contact your Internet Service Provider for a **User ID** and **Password**.*

3 **Static IP**: This option will assign a static (fixed) IP to your camera. A static IP address will prevent the network from changing the camera's IP address and make it easier to access, especially when the camera is on a large network and accessed by multiple users. Contact your Internet Service Provider for more information.*

4 **Use DDNS**: Check this option to use **DDNS** (Dynamic DNS). **DDNS** allows users to setup a unique URL for the IP camera. To use **DDNS**, you must register for a **DDNS ID** from a **DDNS Hosting Service**.*

5 **Port**: This section displays all the port numbers that are required for remote communication.

Webviewer Specifications

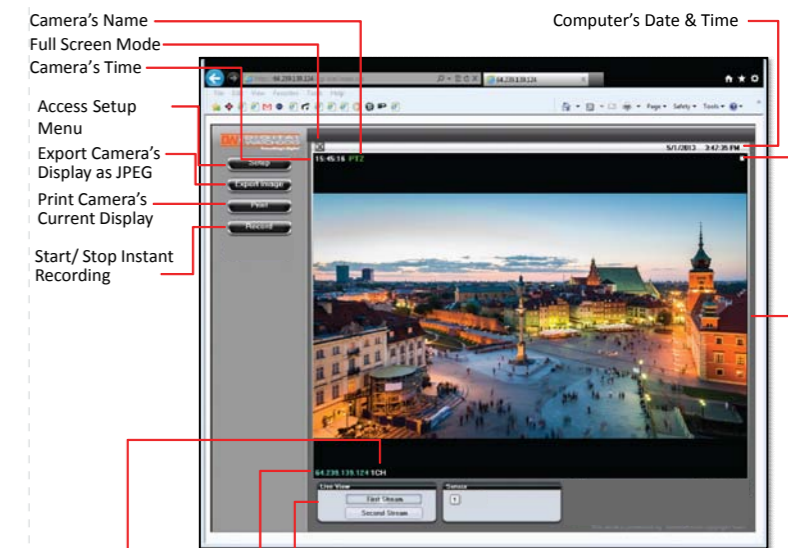
Minimum Requirements for PC

CPU	Intel P4 2.0GHz Dual Core
RAM	More than 1GB
HDD	200GB Required for Saving Clip Image
OS	Microsoft Windows XP or Higher
Resolution	Higher than 1024X768

11

Accessing the Camera

Accessing the Camera



Stream's Name Camera's IP Address Stream Control

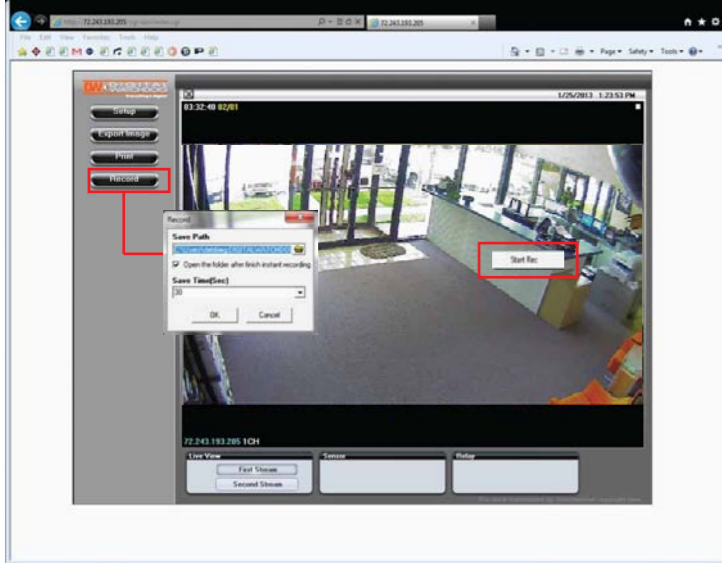
- 1 Enter the IP address of the camera on the Internet Explorer window. Example: <http://192.168.1.123> (Factory Default)
- 2 Enter Username and Password.
Username: admin
Password: admin
- 3 The web browser will ask to install Active-X Control. Once it has been installed, Internet Explorer will display video images from the camera.

The web viewer can also be accessed via Google Chrome, Firefox Mozilla and Safari if one of the streams is set to MJPEG

12

Instant Recording

Instantly record live video to your local drive.



To Setup Instant Recording

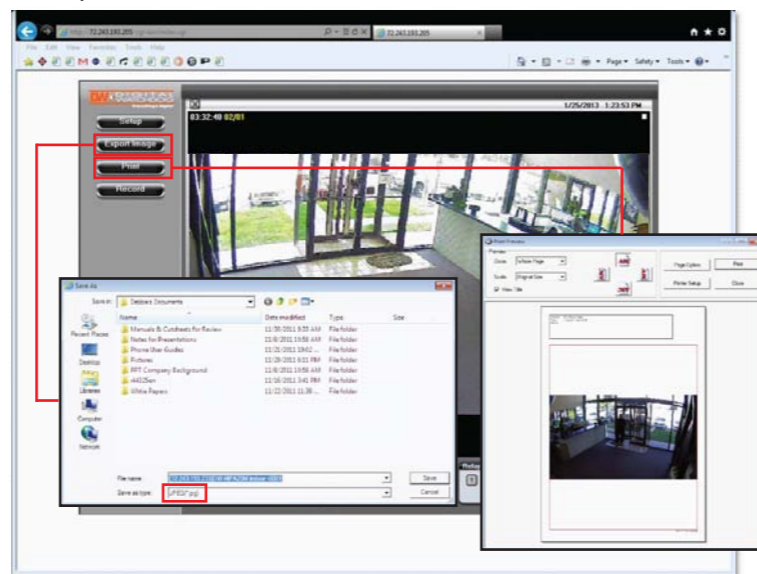
Select the **Record** button.
Indicate where you want the videos to be saved.
Setup the duration of the instant recording. You can record up to 120 seconds of live video.
When setup is complete, click **OK** to save changes or **Cancel** to cancel any changes.

To Start and Stop Instant Recording

To Start, right-click anywhere on the display screen.
Select **Start Rec**. The icon on the top right of the screen will change to **INSTANT**.
To Stop, right-click anywhere on the display screen.
Select **Stop Rec**. The video will be displayed in the designated folder when recording is complete.

13

Export & Print



To Export an Image:

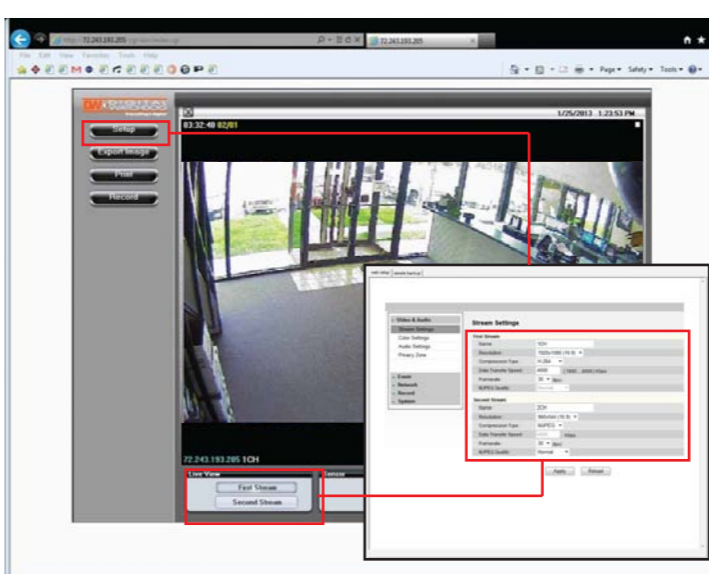
- 1 Select the **Export Image** button. A 'Save As' window will appear.
- 2 Select the folder you wish to Save in and type a File Name.

To Print an Image:

- 1 Select the **Print** button. The **Print Preview** window will appear.
- 2 Adjust the orientation of the screenshot.
- 3 Zoom in on a portion of an image prior to printing or select the image's scale on the page.
- 4 To print information about the screenshot, select **View Title**.
- 5 To add a memo for the screenshot, select **Page Option**.
- 6 Go to **Printer Setup** to select the printer and manage printer properties. Select **Print** to print the page, or **Close** to cancel the print.

14

First Stream & Second Stream



Configure two different stream settings (**First Stream** and **Second Stream**) for monitoring and recording. **Second Stream** is used to record on Motion Detection and the SD card local backup.

- 1 Click **Setup** to adjust the two available stream settings: **First Stream** and **Second Stream**. The two streams can differ in Resolution, Compression Type, Data Transfer Speed, and Framerate.
- 2 On the main monitoring page, user can view the camera with the **First Stream** settings or the **Second Stream** Settings. Below the display screen, click **First Stream** button to view the camera with the **First Stream** settings, and click **Second Stream** button to view the camera with the **Second Stream** settings.

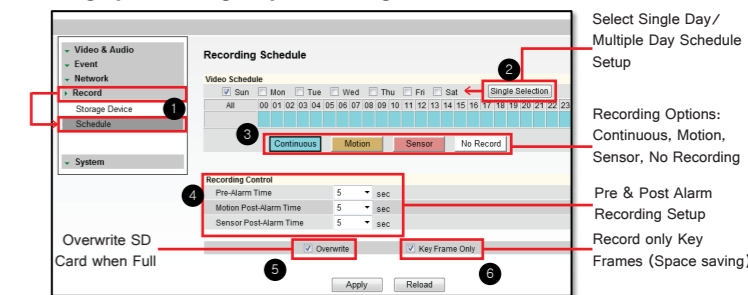
*Stream settings are disabled if accessing the camera from the DW Spectrum software.

15

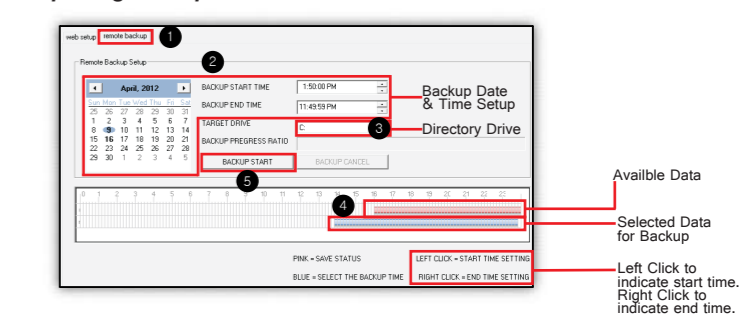
SD Card Installation & Setup

The MEGApix cameras offer local backup in case of network loss.

Setting up an Emergency Recording Schedule:



Exporting Backup Data from the SD Card:



SD card is for Recording Loss emergency recording.

16