

# Start Here

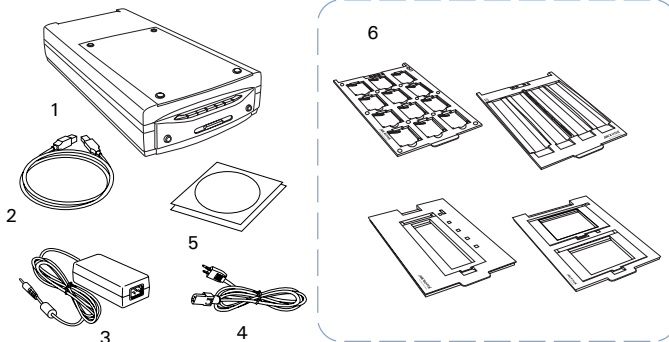
## ▼ Installing your Microtek ScanMaker i800 Plus

### Step 1

### Unpack Contents

Unpack your scanner package and check for major components.

1. ScanMaker i800 Plus
2. USB cable
3. Power adapter
4. Power cord
5. Software CDs/DVDs
6. EZ-Lock™ Film Holders



### Step 2

### Install Software

**Important:** Do not remove the yellow stickers from your scanner until you are told to do so. You must install software before connecting your scanner.

**Always close any open programs, and turn off Anti-virus utilities before installing software.**

#### PC:

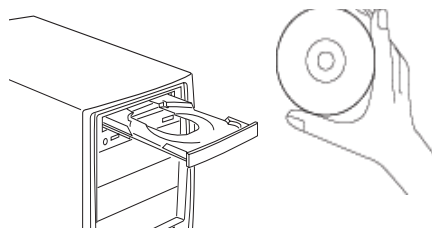
- A. Place the **Adobe DVD** into a drive, and install the software. Skip this step if you have a newer version of Photoshop Elements already installed on your computer.
- B. Place the **Microtek Software CD/DVD** into a drive, and follow the on-screen instructions to install the scanner driver and software.
- C. Restart your computer at the end of all software installation.

**NOTE:** If the Microtek Software Installer screen does not come up automatically, double-click the following in succession: "My Computer"; the CD-ROM (or DVD-ROM) icon; then cdsetup.exe to start the installer program.

#### MAC:

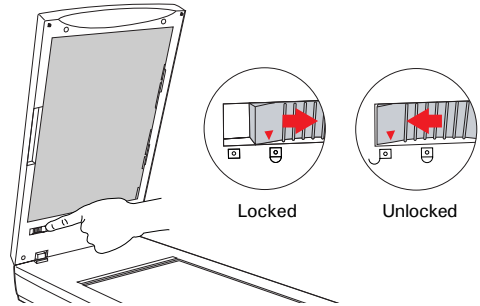
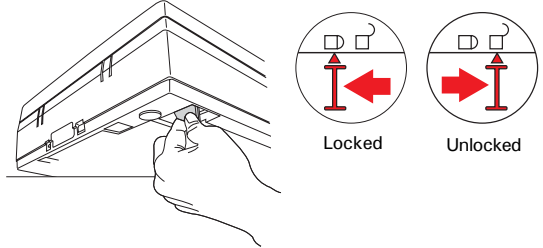
- A. Place the **Adobe DVD** into a drive, and install the software. Skip this step if you have a newer version of Photoshop Elements already installed on your computer.
- B. Place the **Microtek Software CD/DVD (ScanPotter)** into a drive, and double-click the **ScanPotter** installer icon to install ScanPotter.
- C. Install the remaining software components, then restart your computer at the end of all software installation.

**NOTE:** After rebooting your Macintosh, the Microtek software will attempt to locate your scanner on the system. Since this is your first install and you have not yet connected the scanner, simply ignore the message that appears and proceed to the next step.



## Step 3 Unlock Scanner

- Remove the yellow "Step 3" sticker from your scanner.
- With the scanner power off, tilt the back left corner of the scanner to see the locking switch at the bottom.
- Push the locking switch to the position (as indicated by the graphic on the right), with the icon on the lock showing as "unlocked".
- Raise the scanner lid (TMA), and look for the locking switch at the base of the TMA.
- Push the locking switch to the position (as indicated by the graphic on the right), with the icon on the lock showing as "unlocked".

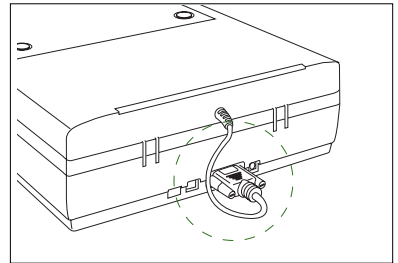


**NOTE:** To lock the scanner (for shipping and other reasons), refer to the ScanMaker i800 Plus Supplement.

## Step 4 Connect Scanner

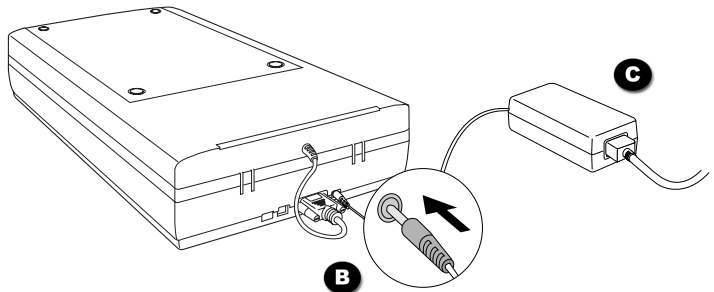
### To the digitizer lid

Make sure the scanner lid (TMA) is properly installed, with its connector securely connected to the scanner's 15-pin accessory port.



### To the power adapter

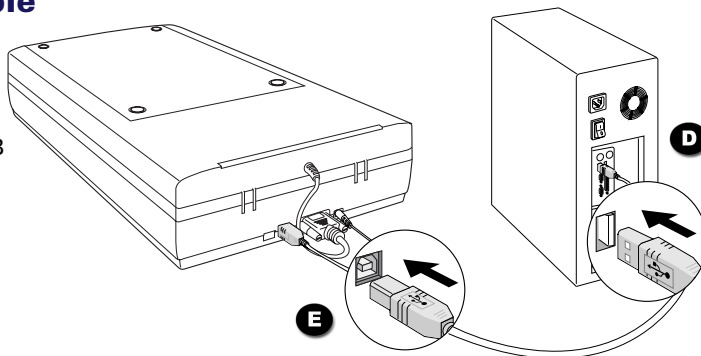
- Remove the yellow "Step 4" sticker from your scanner.
- Connect the power adapter to the back of the scanner.
- Plug one end of the power cord into the socket of the power adapter, and plug the other end into a wall outlet or other power source.



## Step 4: Connect Scanner (cont.)

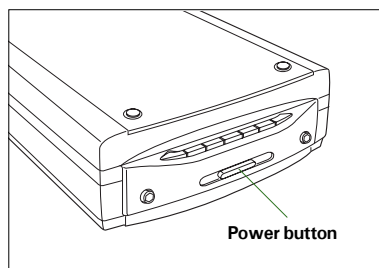
**To the Hi-Speed USB cable**

- D.** Connect one end of the Hi-Speed USB cable to your computer.
- E.** Connect the other end of the Hi-Speed cable to the scanner's USB port.



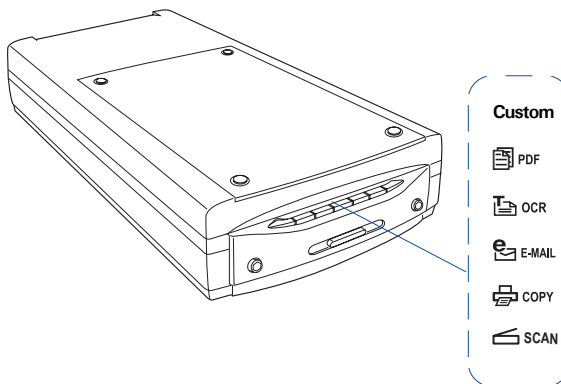
- F.** Press the power button at the front panel of your scanner, and wait for the LEDs to stop blinking and stay on steady.

The scanner will be detected by your system automatically.

**Scanner Buttons**

The **ScanMaker i800 Plus** is equipped with six scanner buttons, providing quick access to the most frequently used functions. These buttons are **Scan**, **Copy**, **E-mail**, **OCR**, **PDF**, and **Custom**.

- **Scan:** Captures images that can be saved as files or sent to an image-editing application.
- **Copy:** Scans the image and sends it to your printer.
- **E-mail:** Scans the image and delivers it directly to your e-mail editor.
- **OCR:** Scans a text document, converts, and saves it in text file format.
- **PDF:** Scans the image and saves it in the Adobe Acrobat PDF format.
- **Custom:** Customizes this button to perform your preferred function, such as Power Saving, Scan, Fax, or Launch Application.

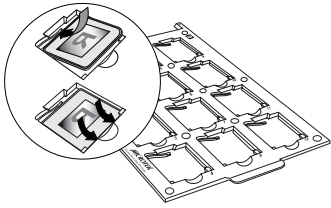


# Using the TMA

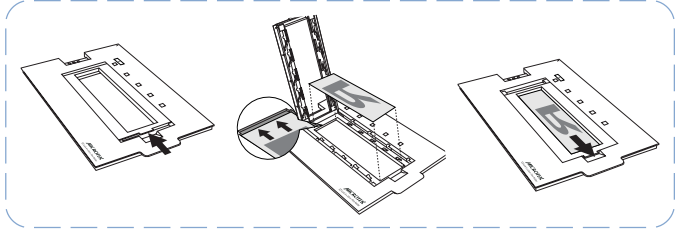
## A. To load film:

1. Load the film inside the EZ-Lock™ Film Holder, with the film's shiny base facing down.

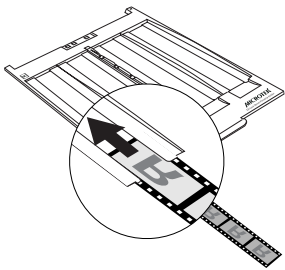
• EZ-Lock 35mm Slide Holder



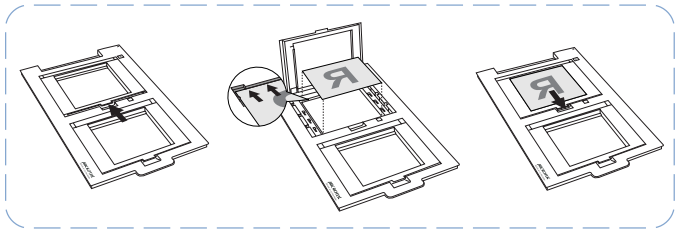
• EZ-Lock 6 x 22 cm Film Holder



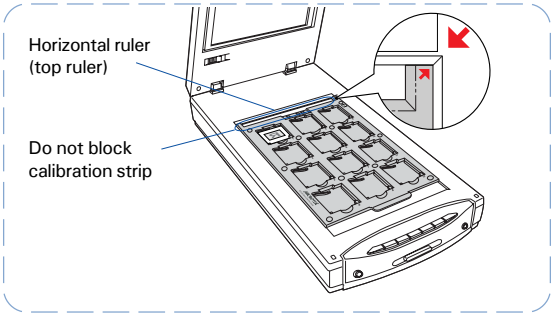
• EZ-Lock 35mm Filmstrip Holder



• EZ-Lock 4" x 5" Film Holder



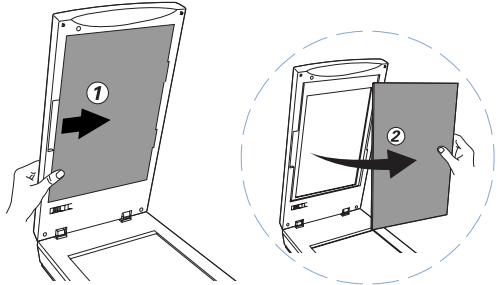
2. Raise the scanner lid (TMA), and place the film holder with the loaded film on the scanner glass bed. Align the arrows so that the holder is flush against the top ruler of the scan bed, with the calibration strip of the holder facing towards the back of the scanner.



## B. Remove the Black Mat:

Raise the scanner lid, and push the Black Mat to the side to remove it from the scanner lid.

For more details on the use of the EZ-Lock Film Holders as well as information on how to scan non-standard-size film, refer to the ScanMaker i800 Plus Supplement.



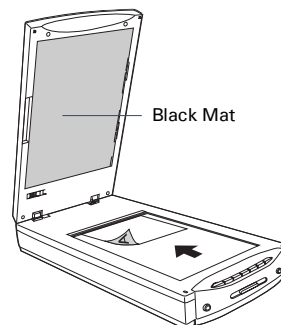
# Basic Scanning for PC Users

## Scanning Photos

### 1. Place the photo.

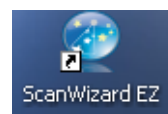
To scan a photo, place the photo on the scanner bed. The top end of the original should be positioned towards the **back** of the scanner, with the surface to be scanned facing down.

**NOTE:** For the automatic cropping feature to work correctly during the preview scan of your photo, make sure the Black Mat is attached to the scanner lid.



### 2. Launch ScanWizard EZ.

To launch ScanWizard EZ as a stand-alone program, double-click the **ScanWizard EZ** icon on your desktop. When ScanWizard EZ is launched for the first time, the control panel of **ScanWizard EZ - EZ Mode** appears automatically.



### 3. Scan your material.

Click the **Scan** button on the control panel of **EZ Mode** to start scanning.

The ScanWizard EZ will detect the photo on the scanner glass surface first, next automatically calibrate the scanner, crop the image, and finally perform the image scan with factory settings. When done, the scanned image can be saved in a file and delivered to the specified location.

## Select preferences if necessary

Before you start scanning, specify image settings related to your output image in the Preferences window according to your preferences.

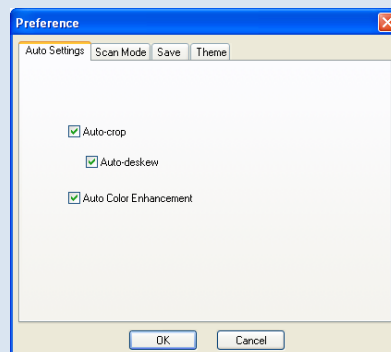
**Auto Settings** – Switches on/off Auto-crop and Auto-deskew, and applies ACE (Automatic Color Enhancement) to the image.

**Scan Mode** – Sets the image resolution and scan quality to match your target application.

**Save** – Assigns the folder location, a file name, and the file format for the output image. Also, it allows you to specify an application to open the image.

**Theme** – Changes the appearance of the control panel for the EZ mode.

**NOTE:** For details about how to use the ScanWizard EZ 's Advanced Mode and Professional Mode, refer to the ScanMaker i800 Plus Supplement.



## Scanning Film

1. Place the film.

To scan film, use the film holder. Refer to “Using the TMA” in this guide for more details.

2. Launch ScanWizard EZ.

Follow the step 2 in “Scanning Photos” on previous page to launch ScanWizard EZ.

3. Switch to ScanWizard EZ - Professional Mode.

Click the **Professional Mode** button on the control panel of the EZ Mode to switch to the Professional Mode.

4. In the Preview window of the Professional Mode, click the **Scan Material** button to choose **Negative Film** for negatives; choose **Positive Film** for transparencies and slides, depending on the film type you are using.

5. In the Scan Job Queue window, check the “Multiple Auto-crop for EZ Lock Film Holder” option.

6. Click the **Overview** button to auto-crop and perform a preliminary scan of the film loaded onto the scanner.

7. Specify your scanning requirements in the Settings window. Choose the desired image type and resolution, and adjust the scan frame settings if necessary.

8. Adjust image quality if necessary, using the Advanced Image Correction tools.

9. Click the **Scan to** button in the Preview window to scan the film.

The screenshot displays the ScanWizard EZ software interface. On the left is the **Settings** window, with callout 7 pointing to the 'Scan Frame' section and callout 8 pointing to the 'Color Correction' section. The 'Film Type' is set to 'Generic Negative Film'. In the center is the **Preview** window, with callout 6 pointing to the 'Overview' button, callout 9 pointing to the 'Scan to' button, and callout 4 pointing to the 'Material' button. On the right is the **Scan Job Queue** window, with callout 5 pointing to the 'Multiple Auto-crop for EZ Lock Film Holder' checkbox. Below the queue window is the label 'Scan Job Queue window'. At the bottom of the Preview window, there is a note: 'While selecting, press "CTRL" key to keep aspect ratio selection, or press "SHIFT" key to add new job.'

Press to switch to ScanWizard EZ - EZ Mode

Press to switch to ScanWizard EZ - Advanced Mode

## Basic Scanning for Mac Users

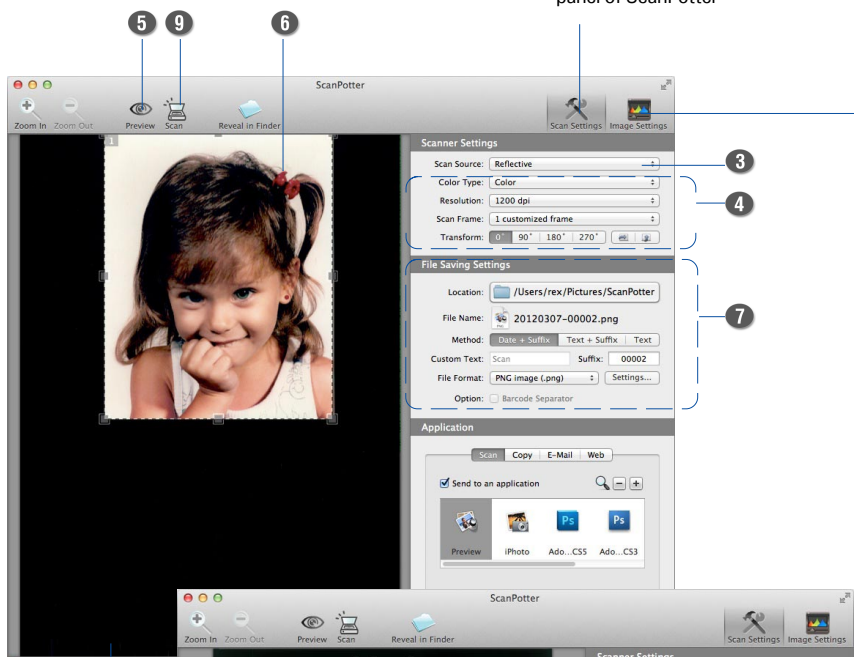
1. Place the scan material.
  - A. To scan a photo, place the photo to be scanned on the scanner bed. The top end of the original should be positioned towards the **back** of the scanner, with the surface to be scanned facing down.

*NOTE: For the automatic cropping feature to work correctly during the preview scan of your photo, make sure the Black Mat is attached to the scanner lid.*
  - B. To scan film, use the film holders. Refer to "Using the TMA" in this guide for more details.
2. Launch **ScanPotter** as a stand-alone by clicking on the program icon, or by selecting it from the application folder in your Mac OS X system.
3. In the Scan Source options menu, depending on the scan material you are using, choose **either Reflective** for photos, **Negative Film** for negatives, or **Positive Film** for transparencies and slides.
4. Specify your scanning requirements in the Scanner Settings column.
  - a) Select the appropriate image type (e.g., RGB Color) in the Color Type as your image output type.
    - Select **Color** to scan the image in color.
    - Select **Grayscale** to scan the image in grayscale.
    - Select **Black & White** to scan the image in black-and-white.
  - b) Select a desired resolution in the Resolution for your image output resolution.
  - c) Select **Automatic Detection** or a desired dimension in the Scan Frame as your preview image size.
5. Click the **Preview** button to perform a preliminary scan of the image in the Preview window.
6. If necessary, resize the scan frame (floating dotted rectangle) around the image by dragging on the square spots on the edge or on the corner of the scan frame to determine the final size of the actual scan.
7. If necessary, specify file settings for your output image files, using the options offered in the File Saving Settings column.
8. If necessary, click the **Image Settings** button to switch to a window in which you can select a preset image effect to the image directly or adjust image quality manually by using the additional image correction tools.
9. Click the **Scan** button to start scanning.

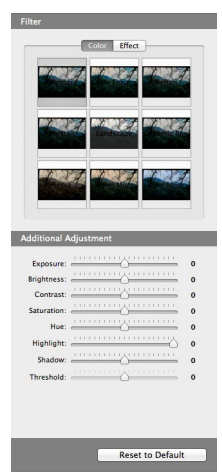
*NOTE: For details on scanning photos and film, see the ScanMaker i800 Plus Supplement in the Microtek Software CD/DVD.*

Scan frame (enclosed by dotted lines)

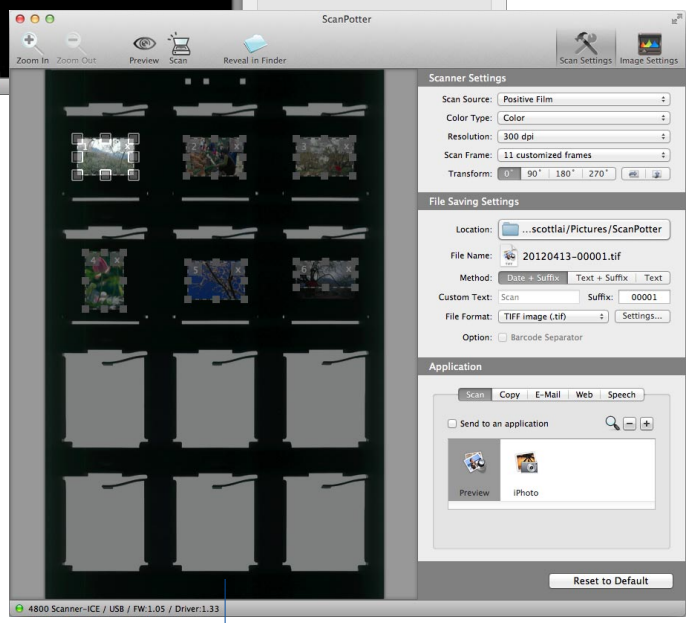
Click the **Scan Settings** button to switch back to the default control panel of ScanPotter



Click the **Image Settings** button to switch to a window where contains a composite display of nine-image-effects (Filter column) and additional image correction tools (Additional Adjustment column) for your scanned image.



Preview window when scanning photos











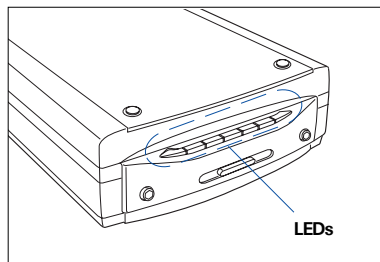
Preview window when scanning slides



## Problems?

The LEDs on the button panel indicate the status of the scanner.

Green LED	Orange LED	
		<b>On</b> - Ready to scan
		<b>Flashing</b> - Scanning
		<b>Sleep</b> - Power saving
		<b>Off</b> - Scanner is off



First, make sure that you have followed installation steps 1 through 4. If your problem is listed here, try the suggested solution.

- 1. No light comes on when the scanner is turned on.**  
Make sure your scanner is connected to your computer and plugged into a power source.
- 2. The "Add/Remove Hardware Wizard" appears on your screen.**  
Click the "Cancel" button and close the Control Panel. Disconnect the USB cable from the back of your computer, and refer to the installation instructions in this guide or in the ScanMaker i800 Plus Supplement.
- 3. When trying to scan, an error message appears on your screen that reads, "Can't Find Scanners".**  
Make sure your scanner is unlocked (see Step 3).  
  
Make sure your scanner is connected to your computer and plugged in to a power source (see Step 4).  
  
Uninstall and reinstall the ScanWizard EZ or ScanPotter software.
- 4. After clicking "Scan," a blank screen appears.**  
Make sure your scanner is unlocked (see Step 3).  
  
Uninstall and reinstall the ScanWizard EZ or ScanPotter software.
- 5. Having trouble scanning negatives or slides?**  
Make sure the scanner lid (TMA) is properly installed, with its connector securely connected to the scanner's 15-pin accessory port.  
  
Make sure you place the EZ-Lock Film Holder properly on the scan bed. Do not block the calibration area (as indicated in the "Using the TMA" section).  
  
From the **ScanWizard EZ - Professional Mode**, go to the Preview window, then click the **Scan Material** button to select either the **Positive** or **Negative** Film option.  
  
From the **ScanPotter**, go to the **Scanner Settings** column, then click the **Scan Source** drop-down menu to select either the **Positive Film** or **Negative Film** option.  
  
Uninstall and reinstall the ScanWizard EZ or ScanPotter software.

## Do You Need Assistance?

### Manuals

If you have additional questions and need further instruction or information, we provide electronic manuals for:

1. Using your ScanMaker i800 Plus Supplement
2. Using the ScanWizard EZ and ScanPotter scanning software
3. Using the bundled third-party software

To access the electronic manuals: Insert the scanner's software CD/DVD into your computer's CD-ROM (or DVD-ROM) drive. Next, locate and click the "Manuals" option when the software installer window appears on your screen. Finally, select and click the title of the manual you wish to view.

### Missing Items

If your package is missing items, please call Microtek Customer Service Department.

### Drivers & Software Upgrades

After you finish the installation of software, if you found that the installed drivers and software cannot run your product or your computer system properly later, please go to the Microtek **Download Service** site at [ww7.microtek.com.tw/service.php](http://ww7.microtek.com.tw/service.php) to download and install any updates you may require.

For additional information about Microtek products, please visit our website at [www.microtek.com](http://www.microtek.com).