

BiPAC 8501/8521

SHDSL.bis (VPN) Firewall Bridge/Router

Quick Start Guide

Declaration of Conformity

Konformitätserklärung

**in accordance with the Radio and Telecommunications Terminal Equipment Act (FTEG)
and Directive 1999/5/EC (R&TTE Directive)**

gemäß dem Gesetz über Funkanlagen und Telekommunikationsendeinrichtungen (FTEG)
und der Richtlinie 1999/5/EG (R&TTE)

The Manufacturer: *Billion Electric Co., Ltd.*

Hersteller:

*8F, No. 192, Sec. 2, Chung Hsing Rd.,
Hsin Tien City, Taipei Hsien
Taiwan*

declares that the product: *BiPAC 8501/8500/8520/8521*

erklärt, dass das Produkt:

*Telecommunications terminal equipment
Telekommunikations(Tk-)endeinrichtung*

Intended purpose: *SHDSL (VPN) Firewall Bridge/Router*

Verwendungszweck:

**complies with the essential requirements of §3 and the other relevant provisions of the FTEG
(Article 3 of the R&TTE Directive), when used for its intended purpose.**

bei bestimmungsgemäßer Verwendung den grundlegenden Anforderungen des § 3 und den übrigen
einschlägigen Bestimmungen des FTEG (Artikel 3 der R&TTE) entspricht.

Harmonised standards: Health and Safety requirements contained in §3 (1) 1. (Article 3 (1) a))

Harmonisierte Normen: Gesundheit und Sicherheit gemäß §3 (1) 1. (Artikel 3 (1) a))

EN 60950: 2000

Harmonised standards: Protection requirements with respect to EMC §3 (1) 2, (Article 3 (1) b))

Harmonisierte Normen: Schutzanforderungen in Bezug auf die EMV §3 (1) 2, Artikel 3 (1) b))

EN 55022 : 2006, EN 61000-3-2: 2006,

EN 61000-3-3: 1995 +A1: 2001 +A2: 2005, EN 55024: 1998 +A1: 2001 +A2: 2003,

IEC 61000-4-3:2006, IEC 61000-4-4:2004, IEC 61000-4-5:2005, IEC 61000-4-6:2007,

IEC 61000-4-8:1993+A1:2000, IEC 61000-4-11:2004

This declaration is issued by:

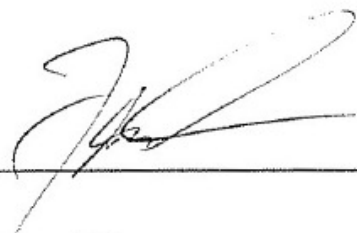
Diese Erklärung wird verantwortlich abgegeben durch:

LONDON

(Place)

2 June 2008

(Date)



Edward Kung

Managing Director

Etec Components Ltd.



For more detailed instructions on configuring and using the Billion SHDSL.bis (VPN) Firewall Bridge/Router, please refer to the on-line manual.

Package Contents

- BiPAC 8501/8521 SHDSL.bis (VPN) Firewall Bridge/ Router
- CD-ROM containing the online manual
- RJ-11 SHDSL/telephone Cable (**Note: BiPAC 8521 contains two RJ-11 cables**)
- Ethernet (CAT-5 LAN) Cable
- Console (PS2-RS232) Cable
- AC-DC power adapter (12VDC, 1A)
- This Quick Start Guide



Warning

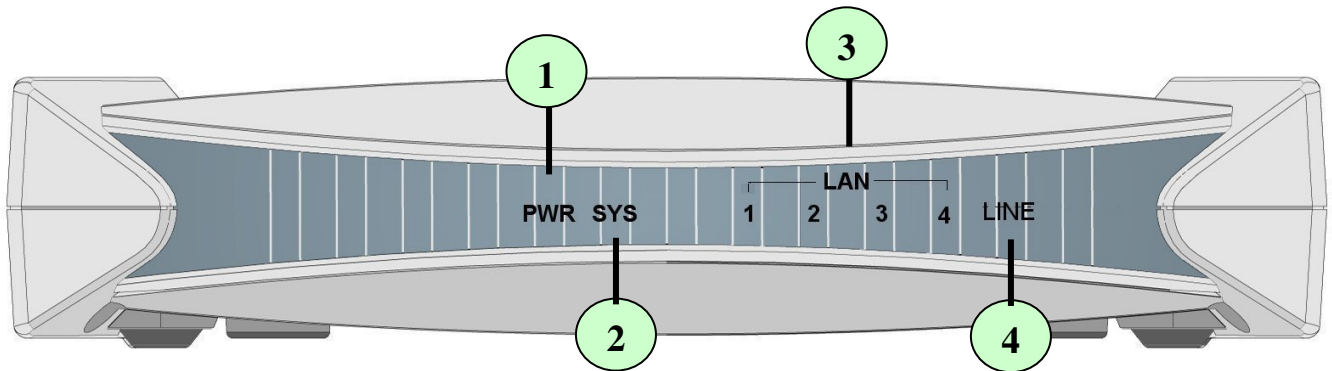
- ✓ Do not use the BiPAC 8501/8521 in high humidity or high temperatures.
- ✓ Do not use the same power source for this router as other equipment.
- ✓ Do not open or repair the case yourself. If this router is too hot, turn off the power immediately and have it repaired at a qualified service center.
- ✓ Avoid using this product and all accessories outdoors.



Attention

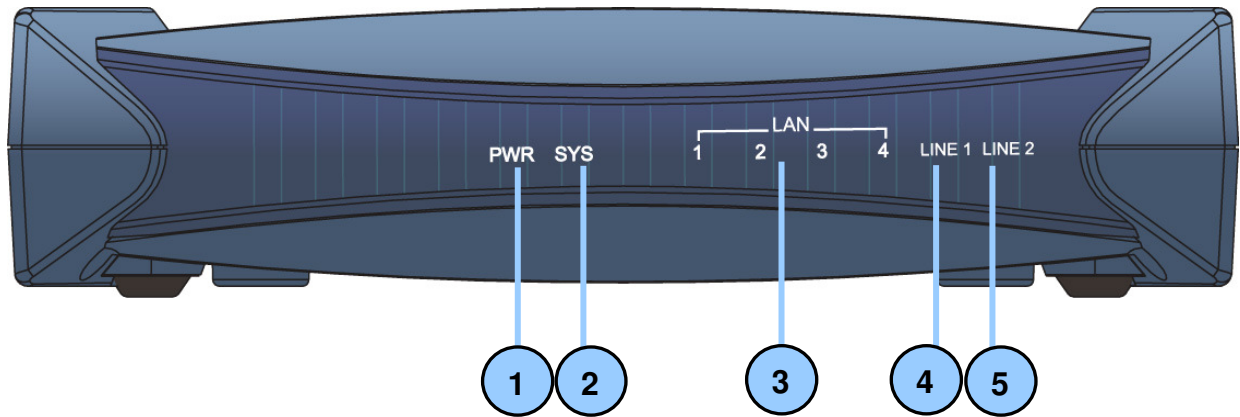
- ✓ Place this router on a stable surface.
- ✓ Only use the power adapter that comes with the package. Using a different voltage rating power adaptor may damage this router.

The Front LEDs of BiPAC 8501



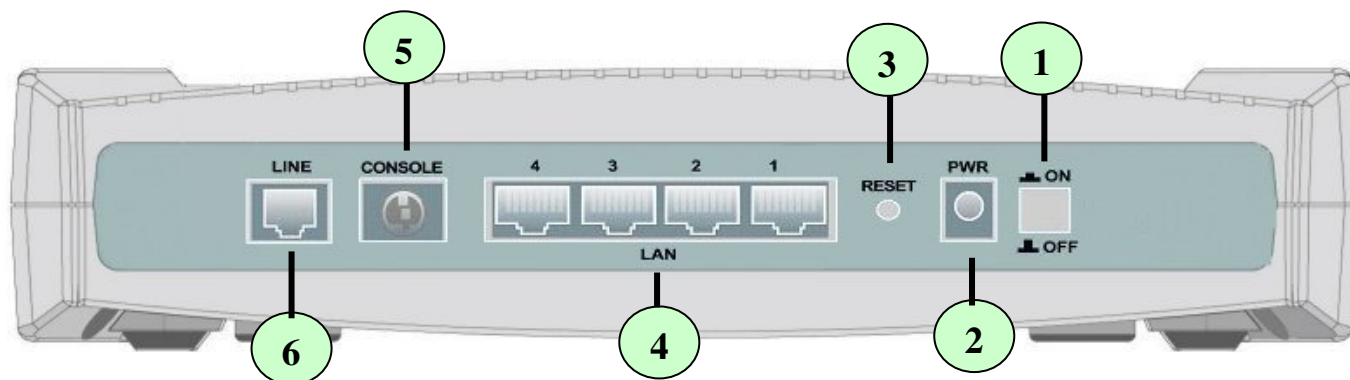
LED		Meaning
1	PWR	Lit when power is ON.
2	SYS	Lit when the system is ready.
3	LAN Port 1X — 4X (RJ-45 connector)	Lit when connected to an Ethernet device. Green for 100Mbps; Orange for 10Mbps. Blinking when data is Transmitted / Received.
4	LINE	Lit when successfully connected to SHDSL line and when it is synchronized.

The Front LEDs of BiPAC 8521



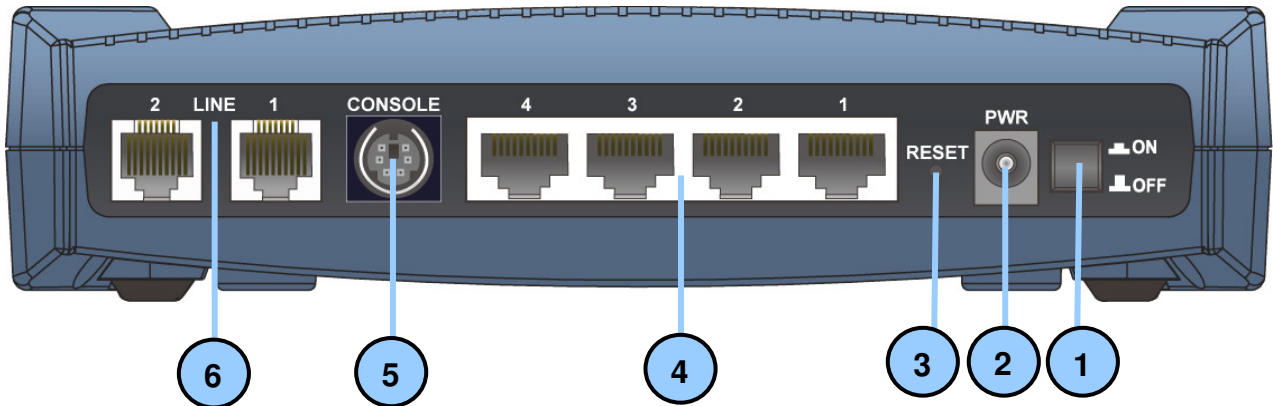
LED		Meaning
1	PWR	Lit green when power is ON.
2	SYS	Flashes when the system is being started. Then lit green when the system is ready.
3	LAN Port 1X — 4X (RJ-45 connector)	Lit when connected to an Ethernet device. Green for 100Mbps; Orange for 10Mbps. Blinking when data is Transmitted / Received.
4	LINE 1 & 2	The green LED will flash steadily when successfully connected to SHDSL line and when it is synchronized.
5		

The Rear Ports of BiPAC 8501



Port		Meaning
1	Power Switch	Power ON/OFF switch
2	PWR	Connect the supplied power adapter to this jack.
3	RESET	To be sure the device is being turned on->press RESET button for: 1-3 seconds: quick reset the device. 6 seconds above, and power off, power on the device: restore to factory default settings. (Cannot login to the router or forgot your Username/Password. Press the button for more than 6 seconds). Caution: After pressing the RESET button for more than 6 seconds, to be sure you power cycle the device again.
4	LAN 1X — 4X (RJ-45 connector)	Connect a UTP Ethernet cable (Cat-5 or Cat-5e) to one of the four LAN ports when connecting to a PC or an office/home network of 10Mbps or 100Mbps.
5	CONSOLE	Connect a PS2/RS-232 cable to this port when connecting to a PC's RS-232 port (9-pin serial port).
6	LINE	Connect the supplied RJ-11 ("telephone") cable to this port when connecting to SHDSL line.

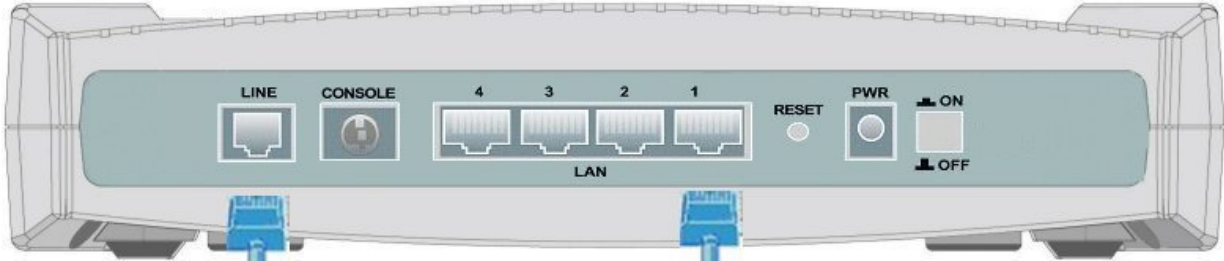
The Rear Ports of BiPAC 8521



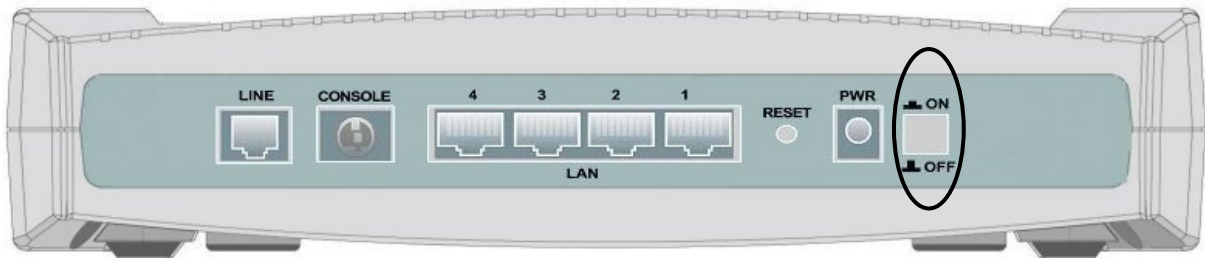
Port		Meaning
1	Power Switch	Power ON/OFF switch
2	PWR	Connect the supplied power adapter to this jack.
3	RESET	To be sure the device is being turned on->press RESET button for: 1-3 seconds : quick reset the device. Press 6 seconds above to power off the device, then power on the device to restore the factory default settings. (Used when cannot login to the router or forgot your Username/Password. Press the button for more than 6 seconds). Caution: After pressing the RESET button for more than 6 seconds, to be sure you power cycle the device again.
4	LAN 1X — 4X (RJ-45 connector)	Connect a UTP Ethernet cable (Cat-5 or Cat-5e) to one of the four LAN ports when connecting to a PC or an office/home network of 10Mbps or 100Mbps.
5	CONSOLE	Connect a PS2/RS-232 cable to this port when connecting to a PC's RS-232 port (9-pin serial port).
6	LINE 1X — 2X (RJ-11 connector)	Connect the supplied RJ-11 ("telephone") cable to this port when connecting to SHDSL line.

Connecting Your SHDSL.bis Bridge/Router

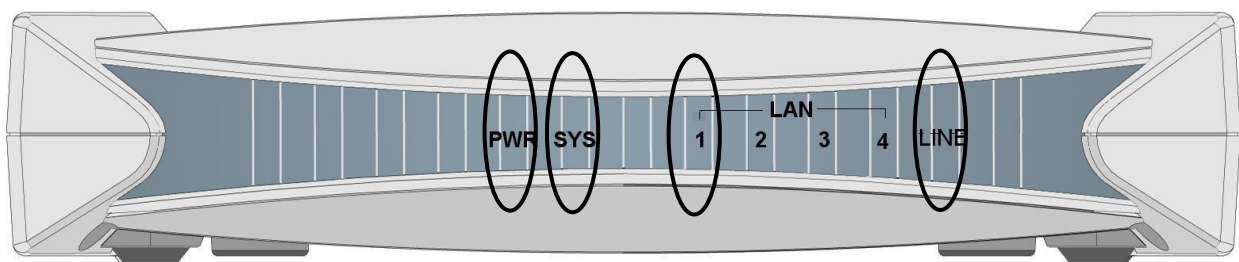
1. Connect the Router to a **LAN** (Local Area Network) and the SHDSL **LINE**.



2. Power on the device.

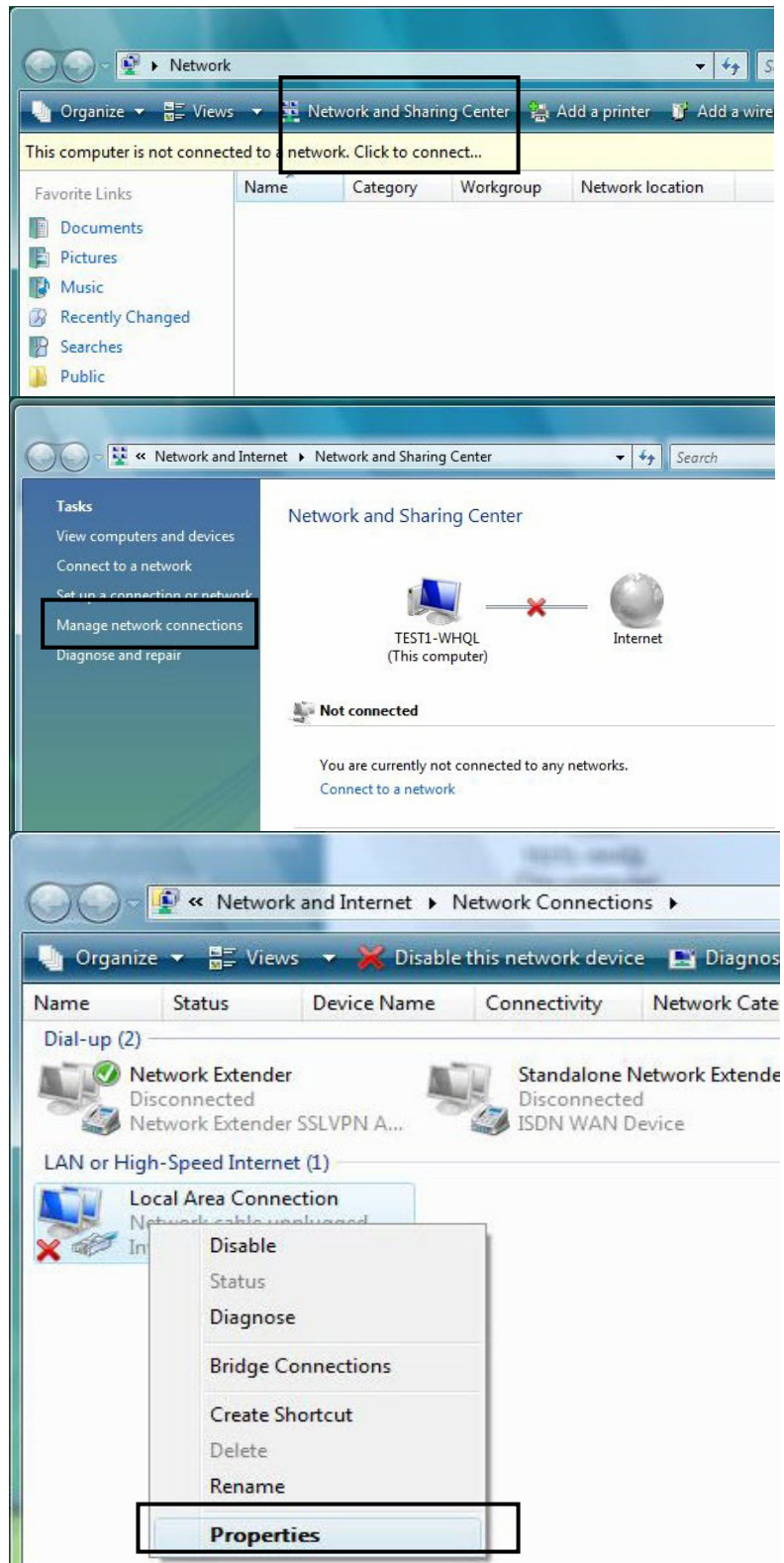


3. Make sure the **PWR** and **SYS** LEDs are lit steadily and that the **relevant LAN and LINE** LED are lit.

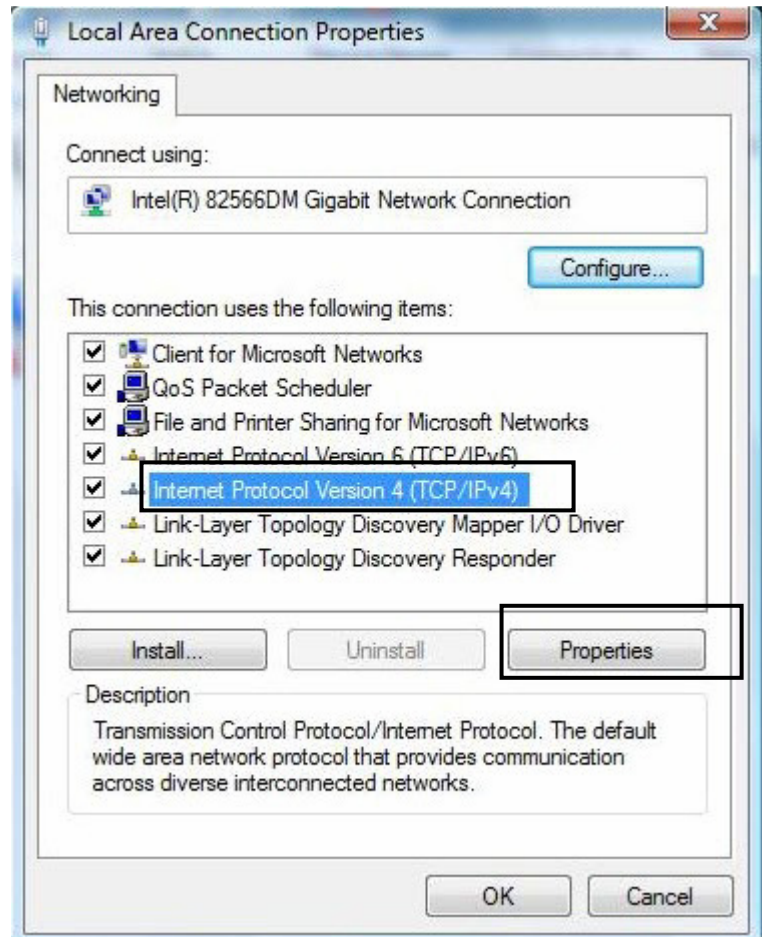


Configuring PC in Windows Vista

1. Go to **Start**. Click on **Network**.
2. Then click on **Network and Sharing Center** at the top bar.
3. When the **Network and Sharing Center** window pops up, select and click on **Manage network connections** on the left window pane.
4. Select the **Local Area Connection**, and right click the icon to select **Properties**.

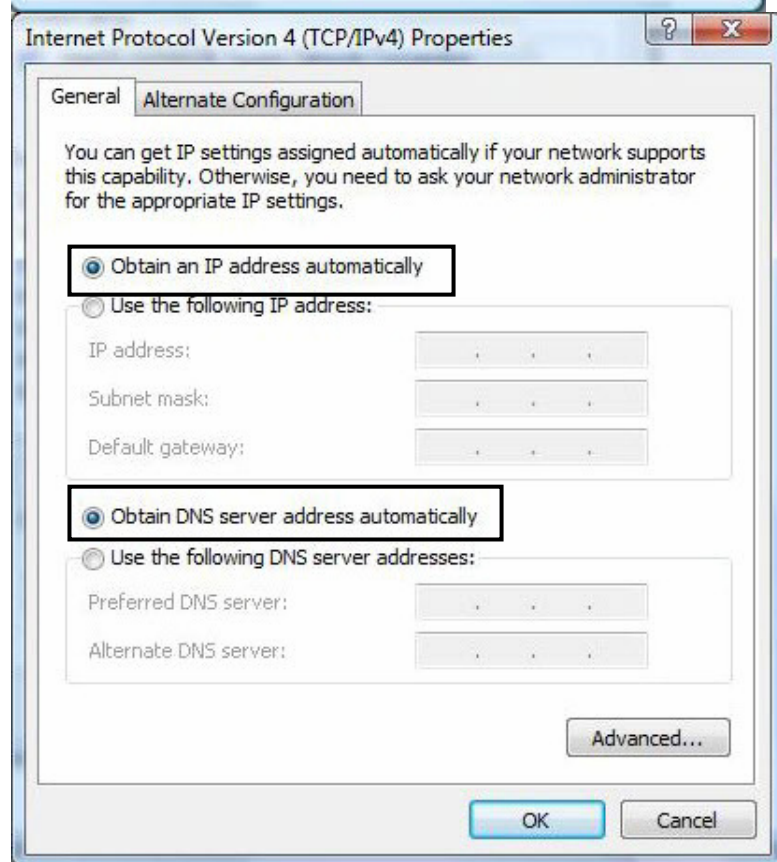


5. Select **Internet Protocol Version 4 (TCP/IPv4)** then click **Properties**.



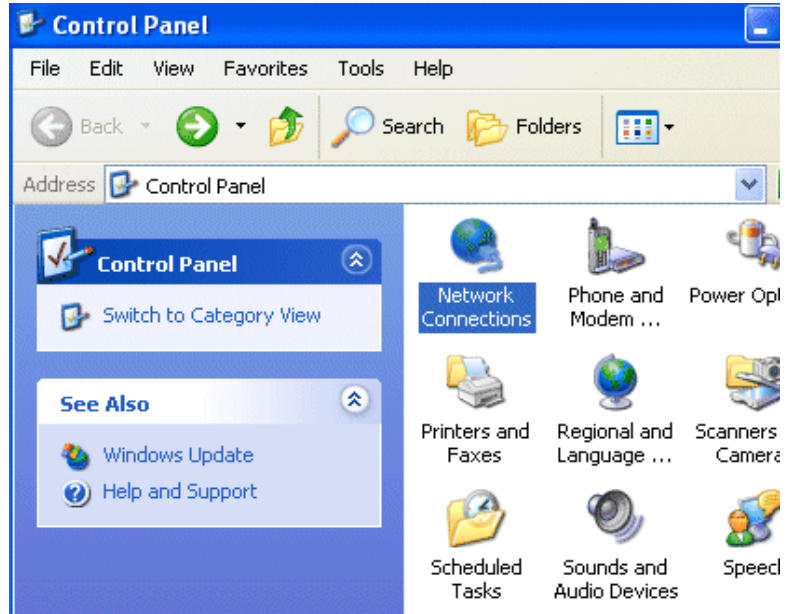
6. In the **TCP/IPv4 properties** window, select the **Obtain an IP address automatically** and **Obtain DNS Server address automatically** radio buttons. Then click **OK** to exit the setting.

7. Click **OK** again in the **Local Area Connection Properties** window to apply the new configuration.

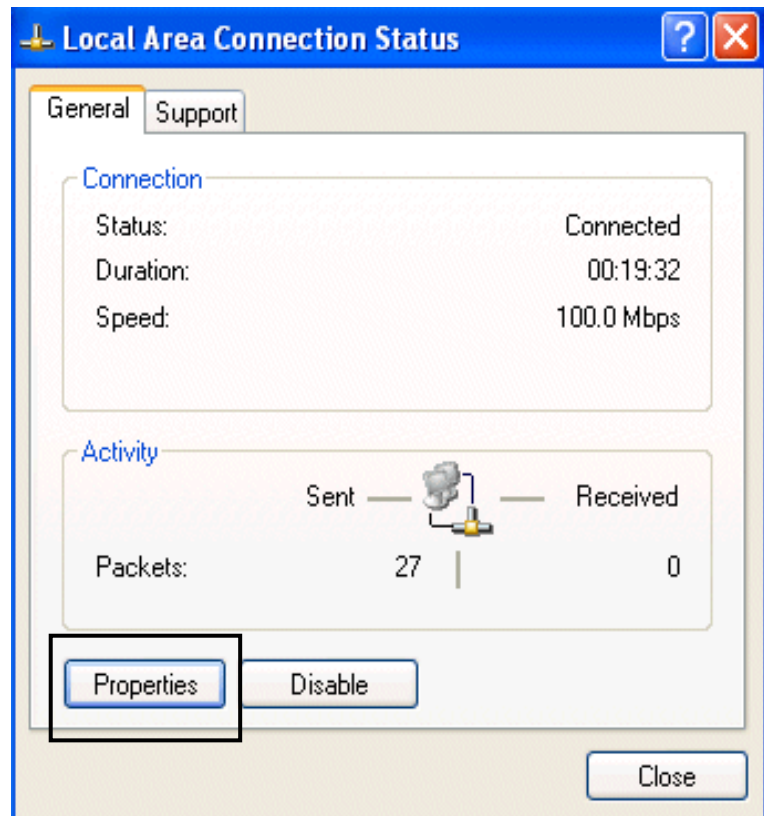


Configuring PC in Windows XP

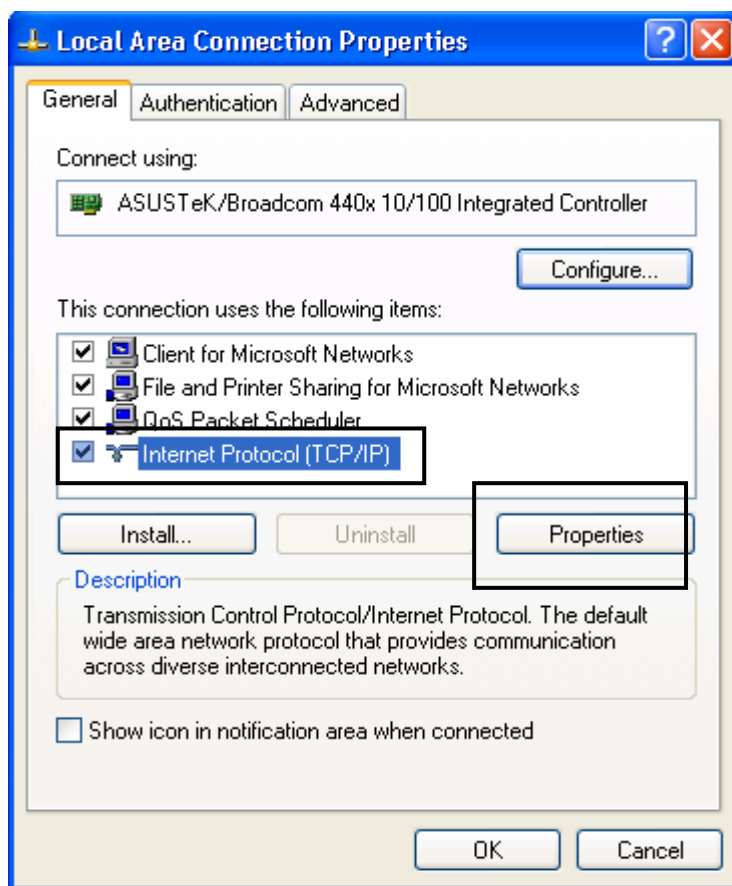
1. Go to **Start / Control Panel (in Classic View)**. In the Control Panel, double-click on **Network Connections**
2. Double-click **Local Area Connection**.



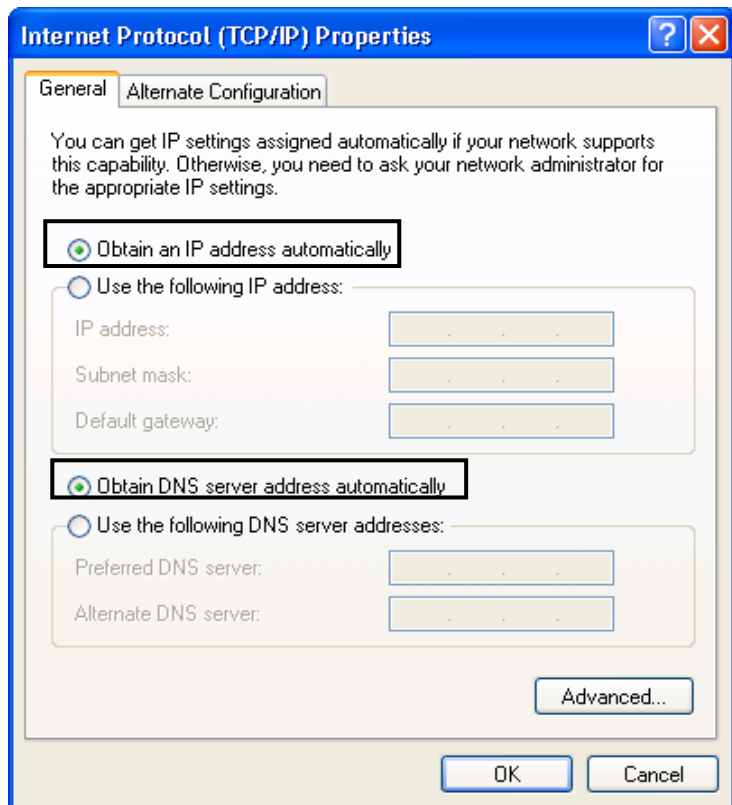
3. In the **Local Area Connection Status** window, click **Properties**.



4. Select **Internet Protocol (TCP/IP)** and click **Properties**.

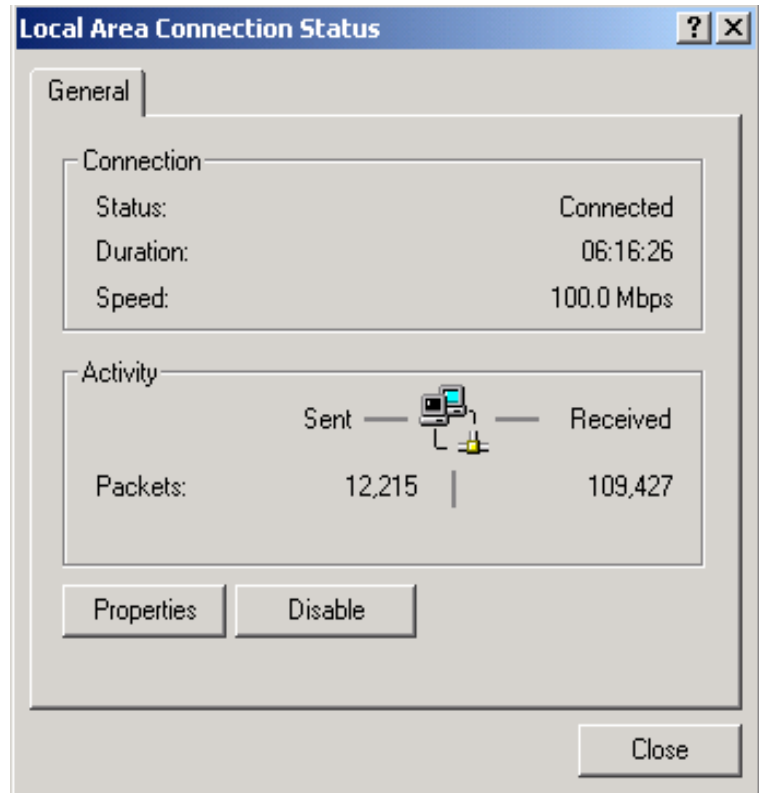
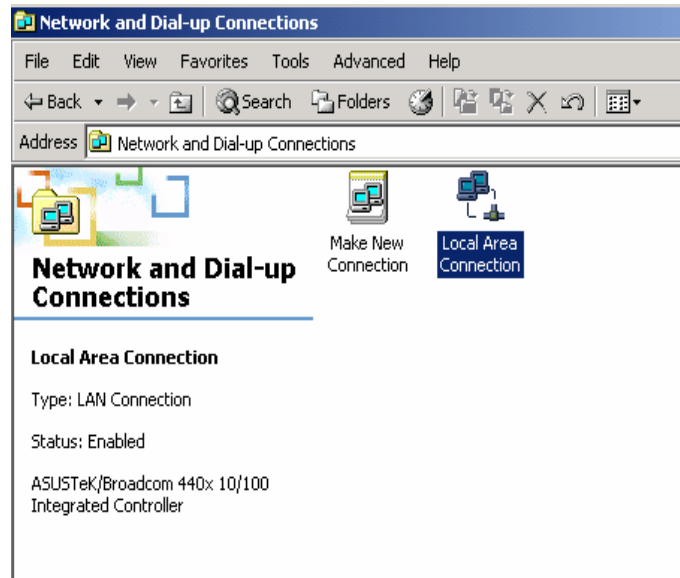


5. Select the **Obtain an IP address automatically** and the **Obtain DNS server address automatically** radio buttons.
6. Click **OK** to finish the configuration.

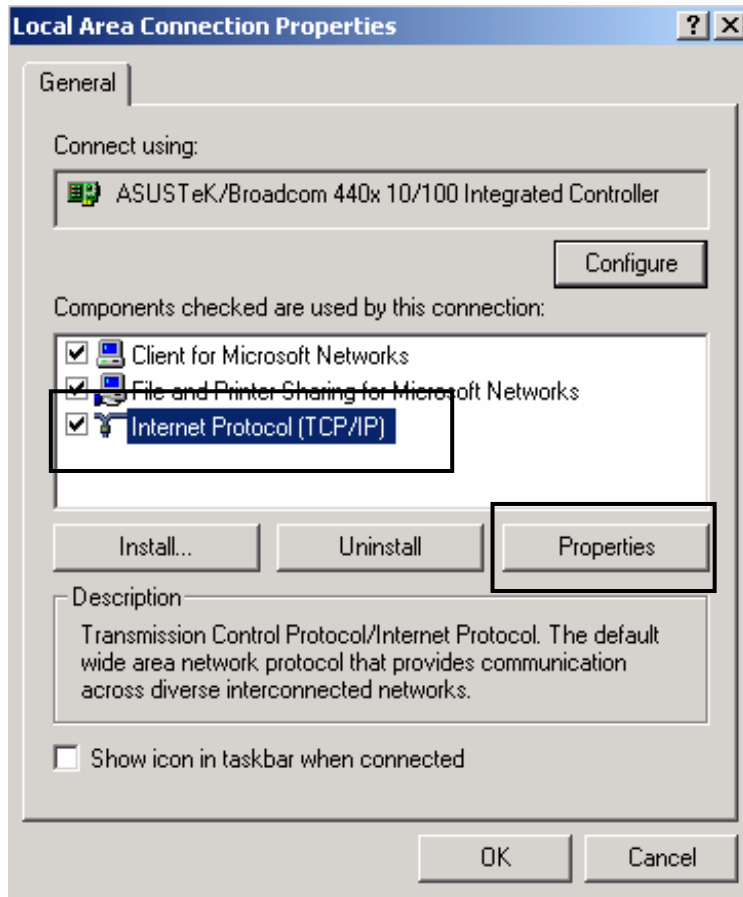


Configuring PC in Windows 2000

1. Go to **Start / Settings / Control Panel**. In the Control Panel, double-click on **Network and Dial-up Connections**.
2. Double-click **Local Area Connection**.
3. In the **Local Area Connection Status** window click **Properties**.

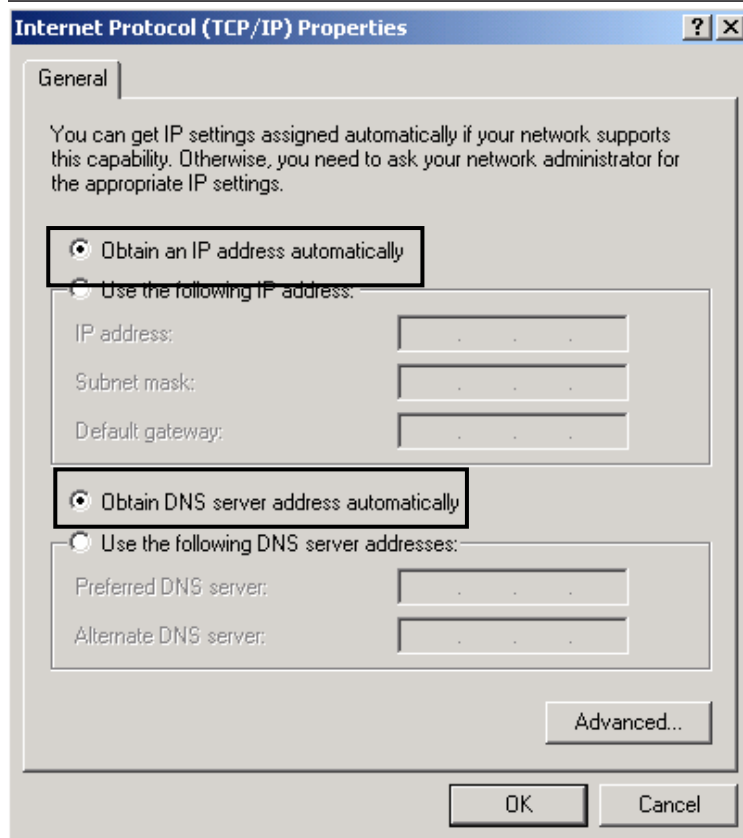


4. Select **Internet Protocol (TCP/IP)** and click **Properties**.



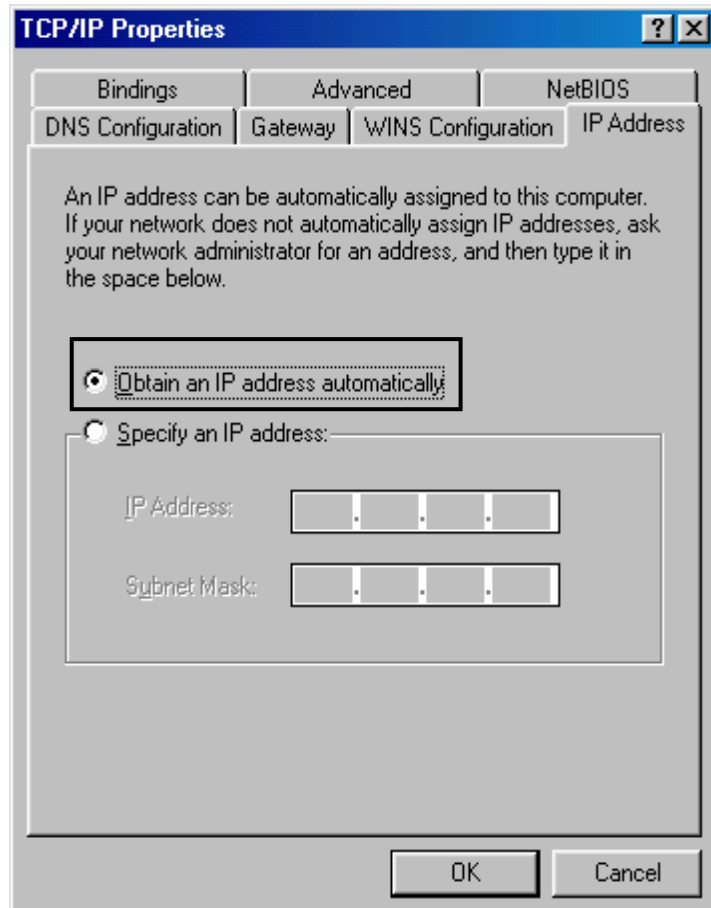
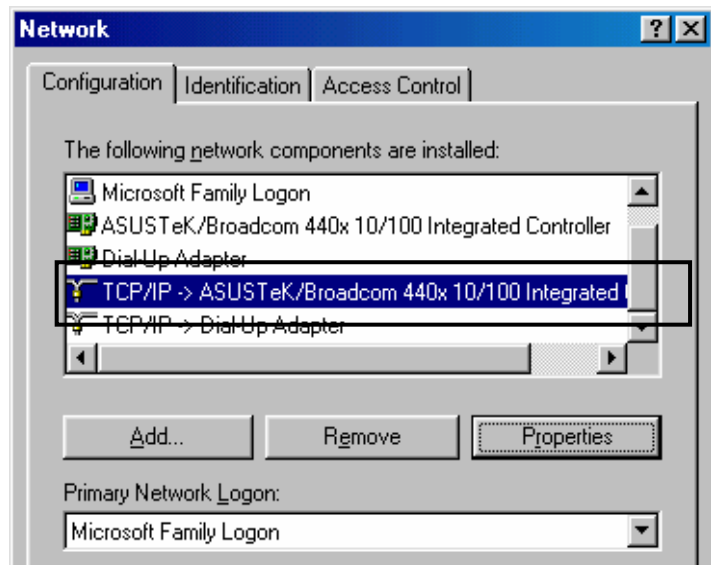
5. Select the **Obtain an IP address automatically** and the **Obtain DNS server address automatically** radio buttons.

6. Click **OK** to finish the configuration.

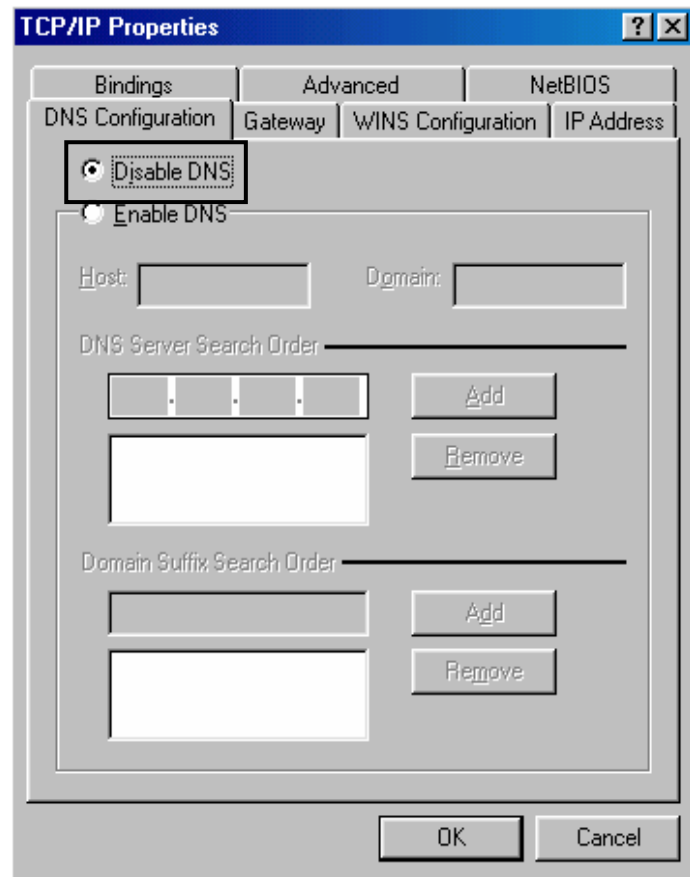


Configuring PC in Windows 98/Me

1. Go to **Start / Settings / Control Panel**. In the Control Panel, double-click on **Network** and choose the **Configuration** tab.
2. Select **TCP/IP ->NE2000 Compatible**, or the name of your Network Interface Card (NIC) in your PC. Then click **Properties**.
3. Select the **Obtain an IP address automatically** radio button.

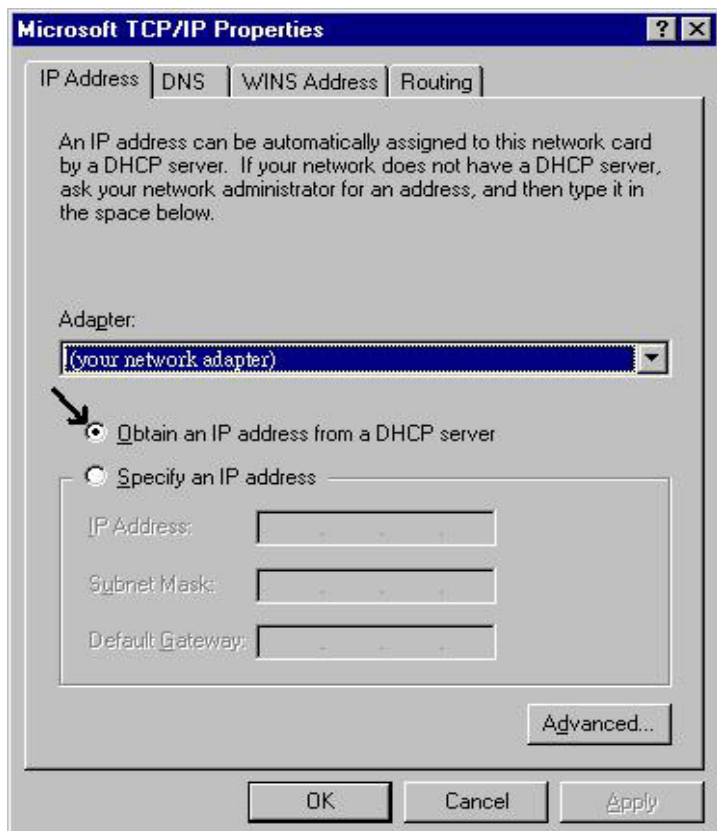
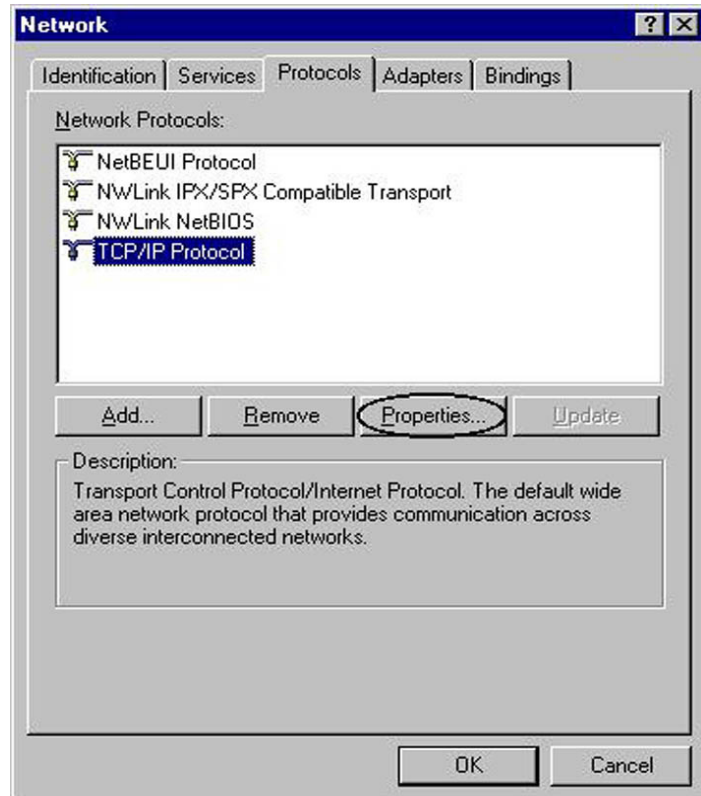


4. Then select the **DNS Configuration** tab.
5. Select the **Disable DNS** radio button and click **OK** to finish the configuration.



Configuring PC in Windows NT4.0

1. Go to **Start / Settings / Control Panel**. In the Control Panel, double-click on **Network** and choose the **Protocols** tab.
2. Select **TCP/IP Protocol** and click **Properties**.
3. Select the **Obtain an IP address from a DHCP server** radio button and click **OK**.



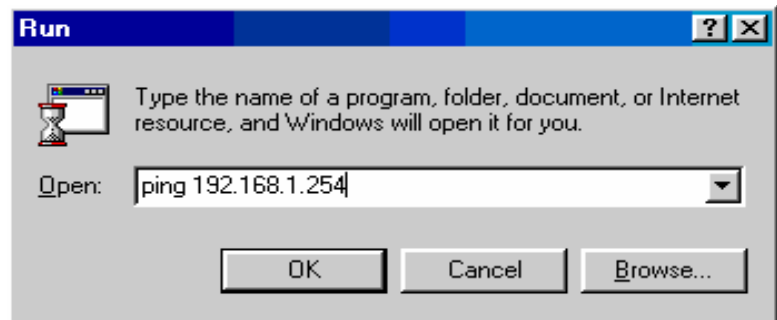
Configuring Your SHDSL.bis (VPN) Firewall Bridge/ Router



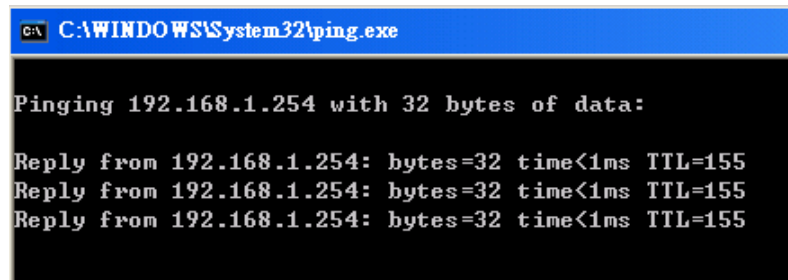
To configure this device, you must have IE 5.0 / Netscape 4.5 or above installed

■ Verifying Your Local Network Connection with the Device

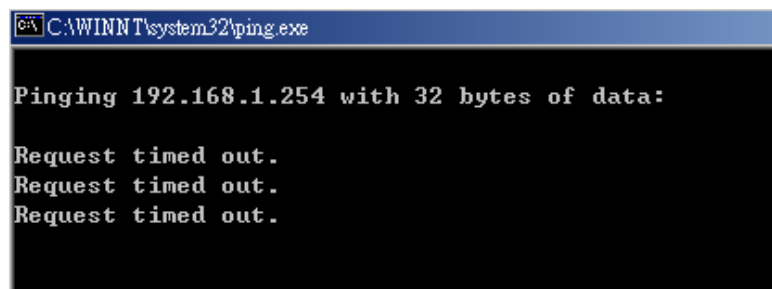
To see if this ADSL Router is visible on the local network, go to **Start / Run**. In the Run dialog box, type “**ping 192.168.1.254**” then press **OK**.



A command prompt window will pop out. If your ping is successful which means your local network is able to reach to the device, then the command prompt window will close up automatically.



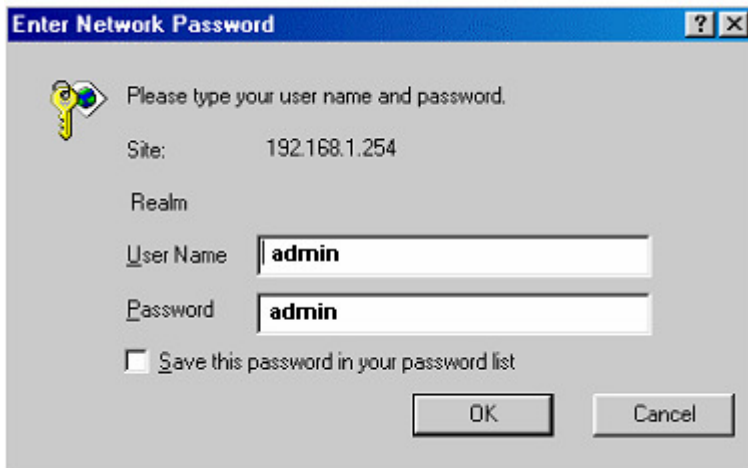
Connection fails, when you see “**Request timed out**” in the command prompt window. You may need to check your set up.



■ Connecting to the Router

Open the web browser and type <http://192.168.1.254> in the browser's address box. This number is the default IP address for this router. Press **Enter**.

A user name and password window will appear. **The default User Name and Password are "admin" and "admin"**. Press **OK** to proceed.



Enter Network Password

Please type your user name and password.

Site: 192.168.1.254

Realm

User Name: admin

Password: admin

Save this password in your password list

OK Cancel

Please see the relevant sections of on-line manual for detailed instructions on how to configure your router.

Product Support and Contact Information

Most problems can be solved by referring to the **Troubleshooting** section in the User's Manual. If you cannot resolve the problem with the **Troubleshooting** chapter, please contact the dealer where you purchased this product.

Contact Billion

WORLDWIDE
<http://www.billion.com>

Billion Product Registration

Billion is committed to before and after sales customer services. You will get the most out of your Billion's products after registration. Please register online at www.billion.com/register to receive valuable services and support from us.