



User manual

**MyiHome AirLinkWiFi
Smurf A Series H.264
Internet Wireless Camera**



NIGHT VISION & REMOTE PAN/TILT ROTATE

User Manual Version 2.0



FCC ID: AMU-A1
CE, R&TTE, ROHS



User manual

Application

1) "Baby monitor"

Sweet BabyiCare

- * Watch, Sing, Talk & Hear baby
- * Anywhere & Anytime in the world

Warning:

All parents and caregivers to put at least 3 feet between any video or audio baby monitor cords and a child in a crib

2) Security

MyiHome Real Time Security & Control anytime anywhere

3) Health Care

4) Pet care

5) Farm care

Important Safeguards and Warnings

>Environment: Please place and use IP camera under temperature between -10~60 degree and humidity less than 90%; Do not use IP camera in smoky or dusty environment;

>Avoid collision or strong fall. Please insure the IP Camera level installation in a stable workplace. Please install in ventilated place. Keep the vent clean. Use within the rating input and output scope.

>Do not touch the lenses of the IP Camera at will. The optimum focus range has been set as default. If you turn the lens, it may cause incorrect focus and vague images.

>Do not turn the Pan/Tilt by force for it may cause damage to internal components of the Pan/Tilt.



User manual

1 Introduction

1.1 Packing List

When you receive internet wireless camera,

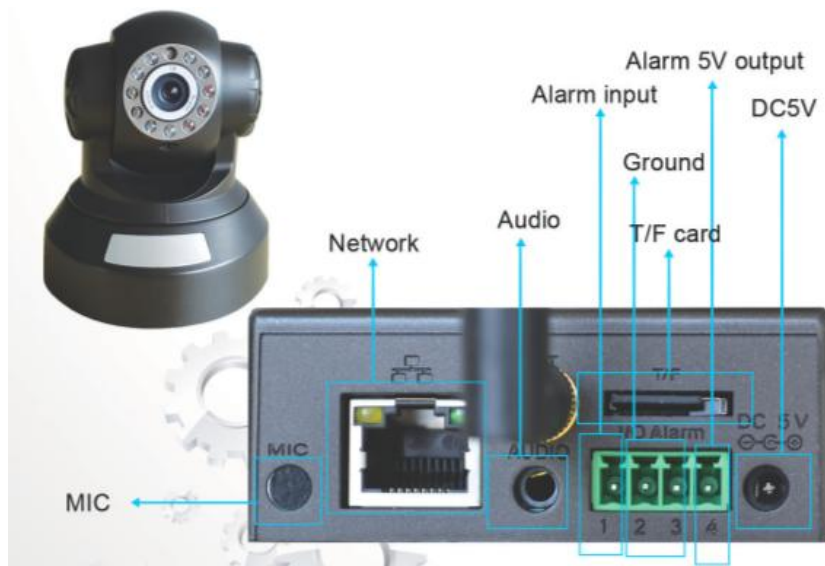
Firstly, check model item on product is the same as what you ordered;

Untie the packing and checking the items contained against the following list;

- Wireless IP Camera 1
- Wi-Fi Antenna(If support in wireless) 1
- DC Power Supply 1
- CD 1
- Network Cable 1
- Mounting bracket 1

NOTE: Contact us immediately in the case of any damaged or short of contents.

1.2 Product views



I/O PINS: 1 Output (+5V) 2 Output B 3 Alarm input 4 Input (GND)



User manual



Power: Outdoor Output (+12V2A)

1.3 PC System Requirements

System configuration requirements :(Example for view four IP Camera)

CPU: 2.06GHZ or above Memory: 256M or above

Network Card: 10M or above Display Card: 64M or above memory

Recommendable Operating system: Window2000 or Window XP or Vista

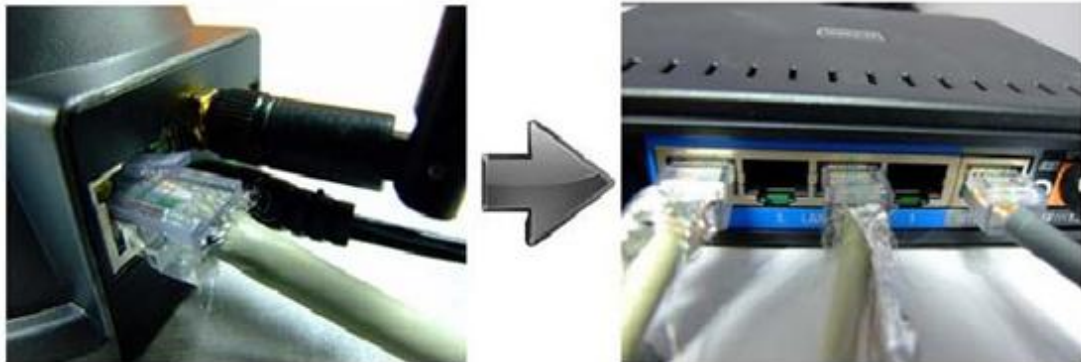
1.4 Hardware Instruction

Follow the steps below to set up your camera hardware. Make sure to follow each step carefully to ensure that the camera operates properly

- 1) Plug the network cable into the camera and then into your Cable/DSL router.
- 2) Plug the power adapter into the camera and then into the power outlet.



User manual



CAUTION: Make sure to only use the power adapter supplied with IP Camera. Using a non-approved power adapter may damage the camera.

3) The camera takes approximately 30 seconds to start up.

4) When the camera is powered and network cable plug correctly. Its head will turn around and the Network Indicator LED is blank.

2 Functions

- >Real-time surveillance
- >Storage
- >Compression format
- >Backup
- >Video playback function
- >Network operation function
- >Alarm linkage function
- >Telecom interface

3 Software installation



User manual

Software installation is the key to the successful use of this product.


- 1 Open the CD, find the software as instruction;
- 2 Double click AirLink CMS **setup.exe** and install the software as instruction.

Default IP address: 192.168.1.10, subnet mask: 255.255.255.0,
gateway: 192.168.1.1 default login: "admin" and password blank

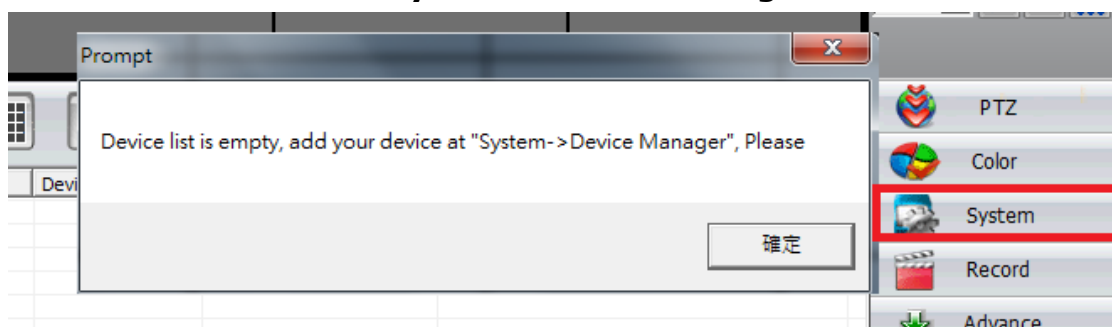


For safety sake, when firstly log-in, please go to "Account" to modify user name and password

3.1 CMS Instructions in Local network

Click CMS icon -> 

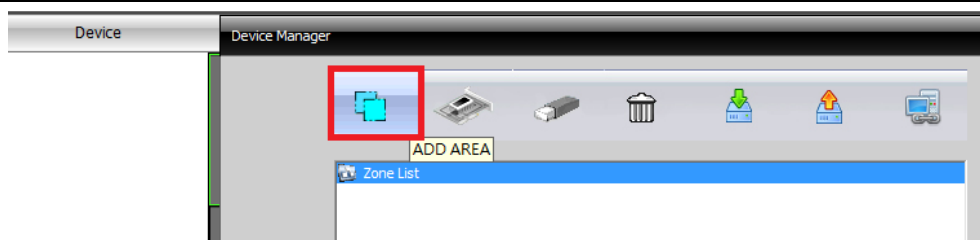
3.2 Add IP Camera at "System->Device Manager"



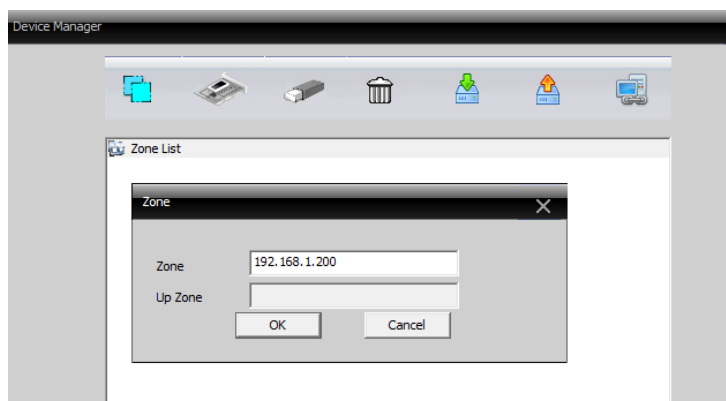
3.3 Device manager ->click  Add area -> Zone List

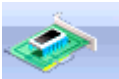


User manual



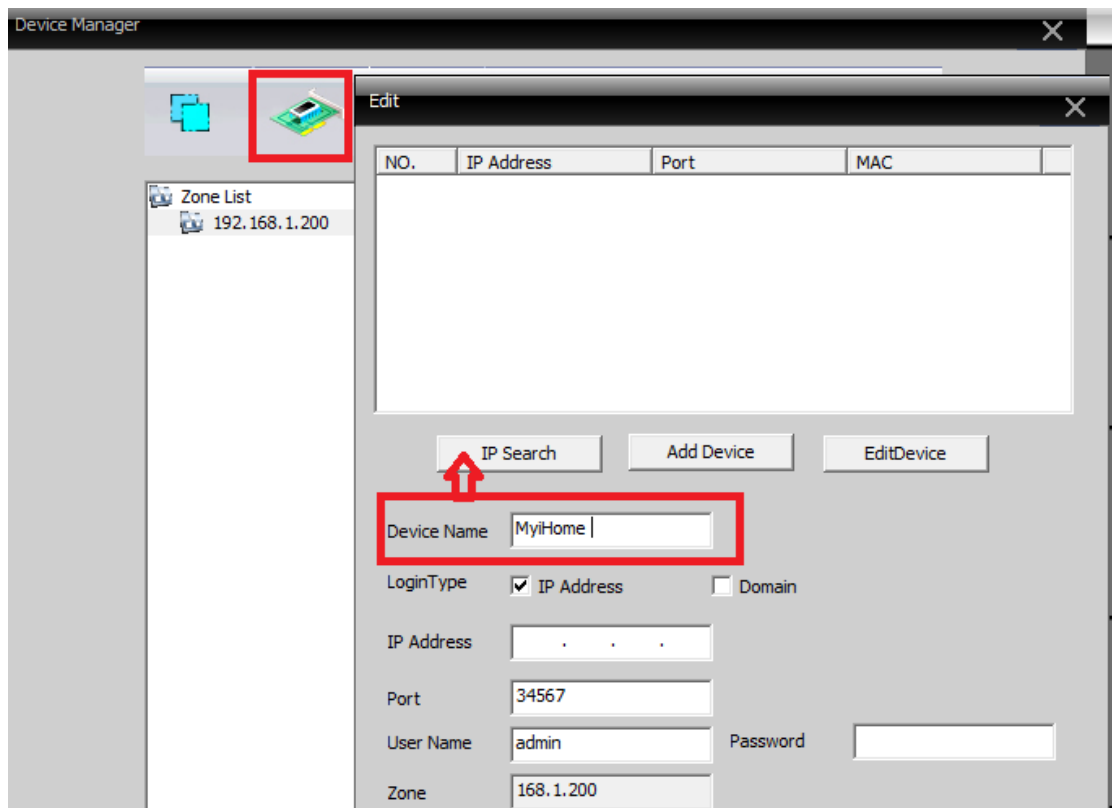
3.4 Zone List -> IP address is your local AP DHCP Client Range:
For Example: Your AP Router IP address is 192.168.1.1, the DHCP range you can give at 192.168.1.200



3.5 IP Search Click  -> Give any word for your Device name
->Select IP Address ->Click ->IP Search after 20 seconds will auto appear your device IP address

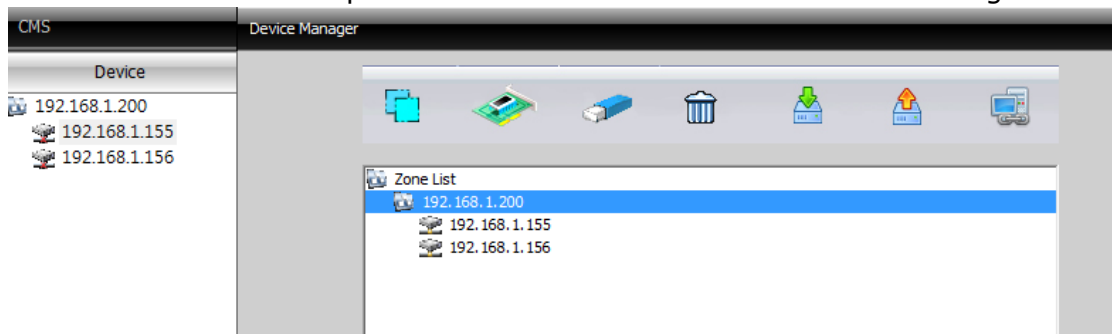


User manual



Please note: User Name default is admin, no Password; Port number should set at "34567"

Click IP address from top list Click ->Add Device -> OK as below image



3.6 Device Monitor

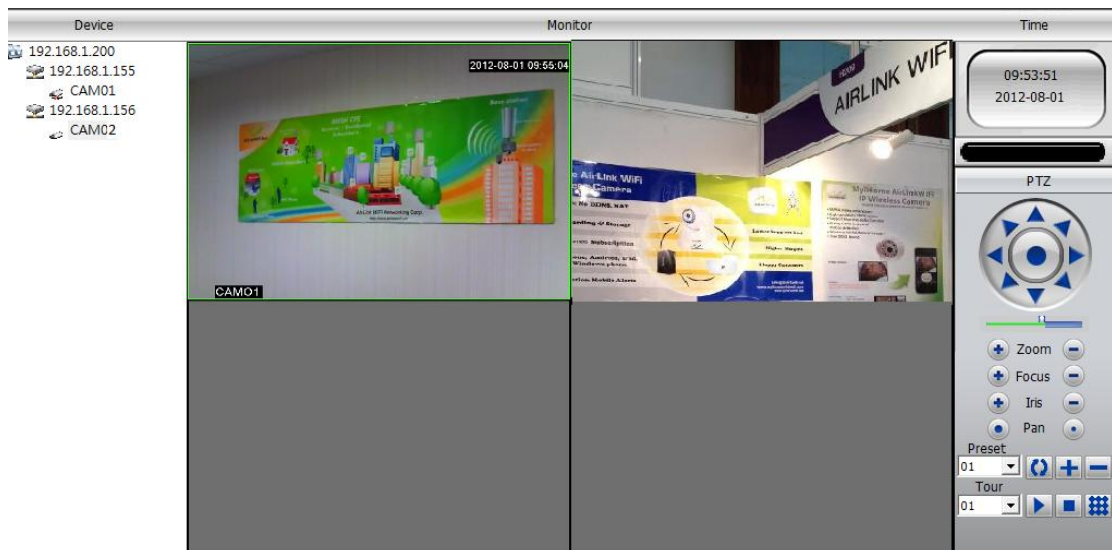
3.6.1 End a list showed Devices Connect Successful

3.6.2 Monitor can be viewing maximum 64 channels

3.6.3 Right side has PTZ adjusted button and others functions button

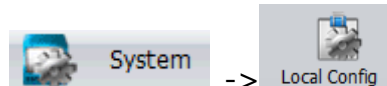


User manual



3.7 Record

3.7.1 Recording Storage setting ->Click



Auto storage list as below image choose what you wish

Base Config | Alarm Setting | DDNSConfig | Version Info

Record Plan

☐ Overwrite Length 60 Min Alarm Record Length 10 Sec

Storage	Total Size(MB)	Used Size(MB)	Free Size(MB)	Free Percent
<input type="checkbox"/> C:\	111610	95023	16587	% 14
<input type="checkbox"/> D:\	111218	52499	58719	% 52
<input checked="" type="checkbox"/> F:\	476821	28859	447962	% 93

Log Maintenance

Alarm log keep days 30 ☒ Show alarm log

Operation log keep days 30

Snapshot

Picture DIR F:\ Browse

Snapshot Format JPG

Local record

Record DIR F:\ Browse

☒ Save local record as AVI

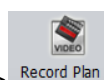
Device

☒ Automatically connect with the last monitoring channel ☒ Automatically expand channel after connected

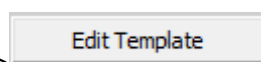
Automatic number 20

Sync time with PC Never

3.7.1 Record Plan ->



->



given a recording



User manual

schedule

Plan Template

Edit Template

Name: Regular Detect Alarm

Period	Start Time	End Time	Regular	Detect	Alarm
Period 1	08 : 00	-- 20 : 00	<input checked="" type="checkbox"/>	<input type="checkbox"/>	<input type="checkbox"/>
Period 2	00 : 00	-- 24 : 00	<input type="checkbox"/>	<input type="checkbox"/>	<input type="checkbox"/>
Period 3	00 : 00	-- 24 : 00	<input type="checkbox"/>	<input type="checkbox"/>	<input type="checkbox"/>
Period 4	00 : 00	-- 24 : 00	<input type="checkbox"/>	<input type="checkbox"/>	<input type="checkbox"/>
Period 5	00 : 00	-- 24 : 00	<input type="checkbox"/>	<input type="checkbox"/>	<input type="checkbox"/>
Period 6	00 : 00	-- 24 : 00	<input type="checkbox"/>	<input type="checkbox"/>	<input type="checkbox"/>

Add MODIFY Delete

Plan Template

Taipei Office

OK

3.7.2 Select cameras list from left side ->Click from Plan Template list add schedule

Record

192.168.1.200
192.168.1.155
192.168.1.156

Channel: CAM1 All

Sun: Taipei Office <---

Mon: Taipei Office <---

Tue: Taipei Office <---

Wed: Taipei Office <---

Thu: Taipei Office <---

Fri: Taipei Office <---

Sat: Taipei Office <---

Plan Template

Taipei Office

Edit Template

0 4 8 12 16 20 24

Sun: [Green bar from 8 to 20]

Mon: [Green bar from 8 to 20]

Tue: [Green bar from 8 to 20]

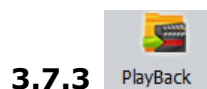
Wed: [Green bar from 8 to 20]

Thu: [Green bar from 8 to 20]

Fri: [Green bar from 8 to 20]

Sat: [Green bar from 8 to 20]

Regular Detect Alarm

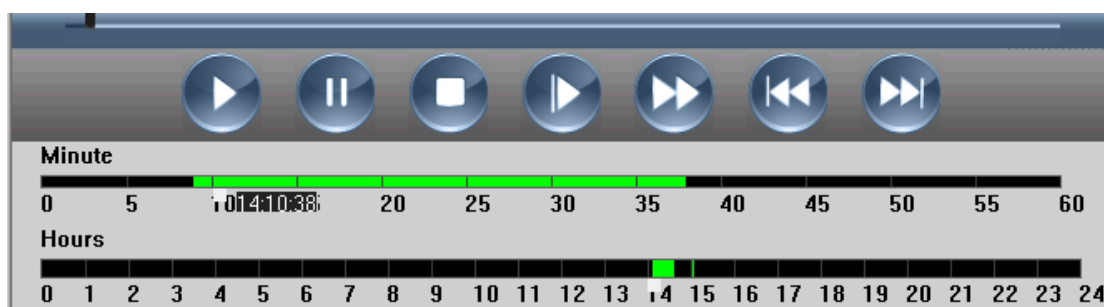
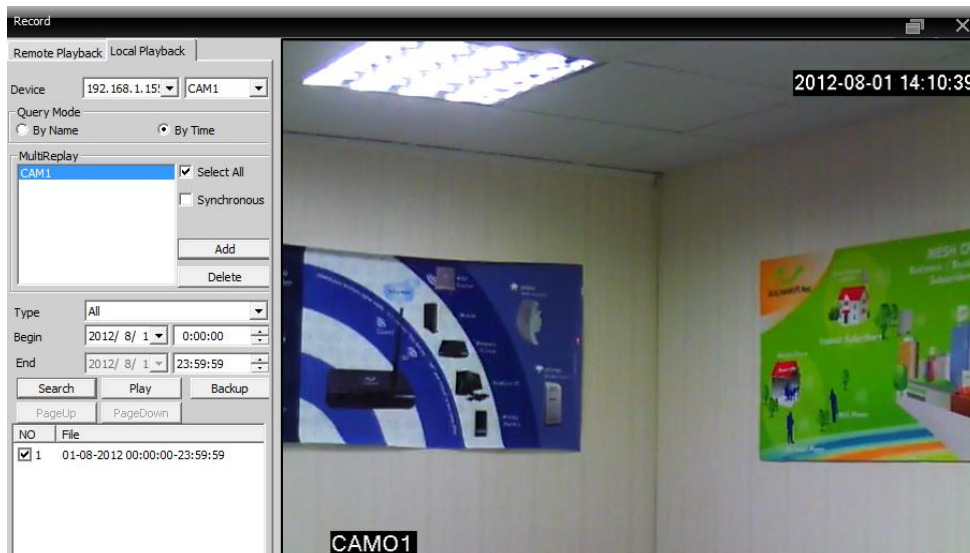


3.7.3 Select "Remote Playback" or "Local Playback"



User manual

Device add "By Name" or "By Time" at left side -> Search -> Auto Recording files appear in a list



【Playback control button】 see detail in below chart;

Button	Function	Button	Function
	Play		Pause
	Slow-play		Fast-play
	Previous frame		Next frame

3.8 Remote Configure

3.8.1 Remote Networking by DDNS domain name

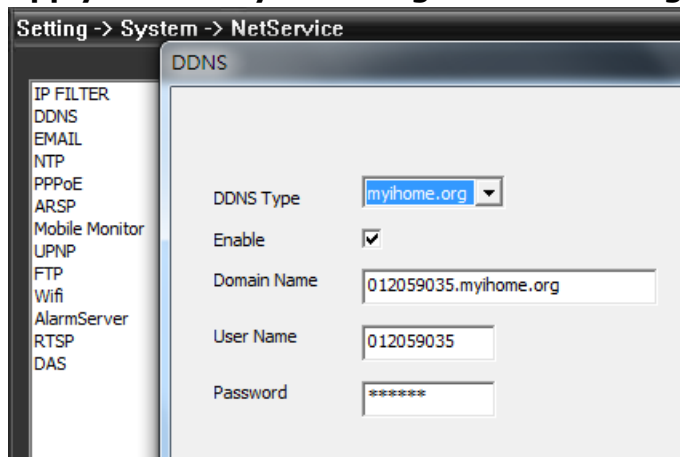
Click -> System -> Remote Config -> NetService -> Click DDNS



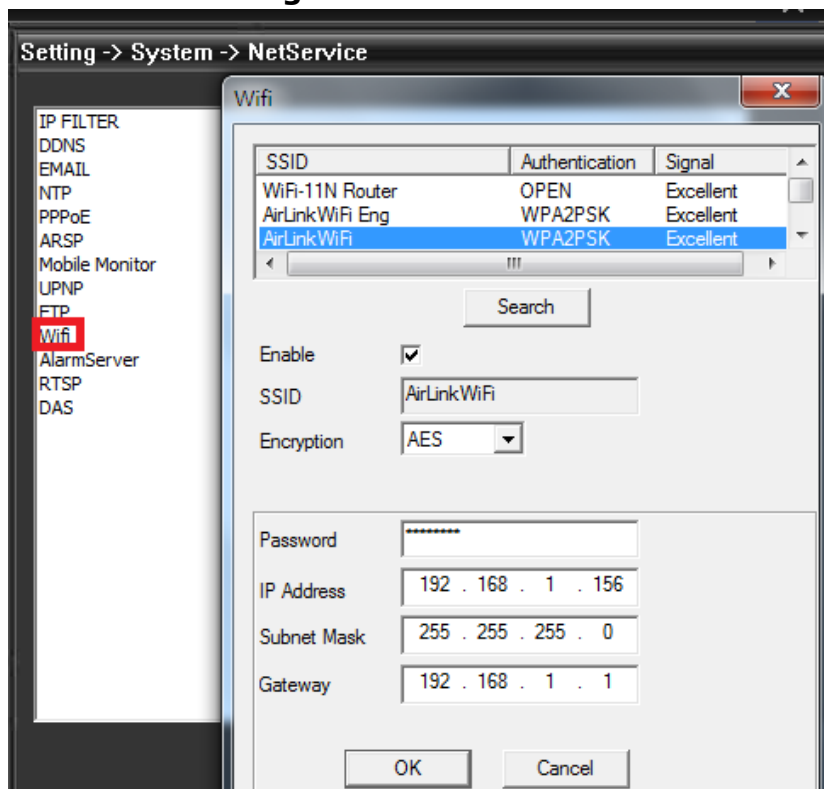
User manual

User and Password: the user name and password used when applying for the domain name or use free **myihome.org** login account and password at each **MyiHomeAirLink** camera base paste up with a label

Apply DDNS "myihome.org" as below image



3.8.2 WiFi Setting



3.8.3 Remote viewing how to set up from your AP Router

3.8.3.1 Give DHCP Client Range suggest setting at 192.168.1.100~200



User manual

AirLinkWiFi 802.11n Wireless Broadband Router

Site contents:

- Setup Wizard
- Operation Mode
- Wireless
- TCP/IP Settings
 - LAN Interface
 - WAN Interface
- Firewall
- QoS
- Route Setup
- Management
- Logout

LAN Interface Setup

This page is used to configure the parameters for local area network which connects to the LAN port of your Access Point. Here you may change the setting for IP address, subnet mask, DHCP, etc..

IP Address: 192.168.1.1
Subnet Mask: 255.255.255.0
Default Gateway: 0.0.0.0
DHCP: Server
DHCP Client Range: 192.168.1.100 - 192.168.1.200 DMZ
Static DHCP: Set Static DHCP
Domain Name: Router
802.1d Spanning Tree: Disabled
Clone MAC Address: 000000000000

3.8.3.2 Enable "UPNP" from TCP/IP Setting

AirLinkWiFi 802.11n Wireless Broadband Router

Site contents:

- Setup Wizard
- Operation Mode
- Wireless
- TCP/IP Settings
 - LAN Interface
 - WAN Interface
- Firewall
- QoS
- Route Setup
- Management
- Logout

WAN Access Type: DHCP Client

Host Name: Router
MTU Size: 1492 (1400-1492 bytes)
☒ **Attain DNS Automatically**
☐ **Set DNS Manually**
DNS 1:
DNS 2:
DNS 3:
Clone MAC Address: 000000000000
☒ **Enable uPNP**
☒ **Enable IGMP Proxy**
☐ **Enable Ping Access on WAN**
☐ **Enable Web Server Access on WAN**
☒ **Enable IPsec pass through on VPN connection**
☒ **Enable PPTP pass through on VPN connection**
☒ **Enable L2TP pass through on VPN connection**

3.8.3.3 Enable "DMZ" from Firewall setting giving a Host IP Address as below image



User manual

AirLinkWiFi 802.11n Wireless Broadband Router

Site contents:

- Setup Wizard
- Operation Mode
- Wireless
- TCP/IP Settings
- Firewall
 - Port Filtering
 - IP Filtering
 - MAC Filtering
 - Port Forwarding
 - URL Filtering
 - DMZ**
- QoS
- Route Setup
- Management
- Logout

DMZ

A Demilitarized Zone is used to provide Internet services without sacrificing unauthorized access to its local private network. Typically, the DMZ host contains devices accessible to Internet traffic, such as Web (HTTP) servers, FTP servers, SMTP (e-mail) servers and DNS servers.

☒ **Enable DMZ**

DMZ Host IP Address:

3.8.3.4 Port Forwarding set up as below image,

Remark: 34567 is media port

: 34599 for 3G smart mobile phone remote viewing

: 8188 is for viewing at IE, default is 80

AirLinkWiFi 802.11n Wireless Broadband Router

Site contents:

- Setup Wizard
- Operation Mode
- Wireless
- TCP/IP Settings
- Firewall
 - Port Filtering
 - IP Filtering
 - MAC Filtering
 - Port Forwarding**
 - URL Filtering
 - DMZ
 - VLAN
- QoS
- Route Setup
- Management
- Logout

Port Forwarding

Entries in this table allow you to automatically redirect common network services to a specific machine behind the NAT firewall. These settings are only necessary if you wish to host some sort of server like a web server or mail server on the private local network behind your Gateway's NAT firewall.

☒ **Enable Port Forwarding**

IP Address:
Protocol:
Port Range: -
Comment:

Current Port Forwarding Table:

Local IP Address	Protocol	Port Range	Comment	Select
192.168.1.155	TCP	34567	554	<input type="checkbox"/>
192.168.1.155	TCP	34599	554	<input type="checkbox"/>
192.168.1.155	TCP	8188	554	<input type="checkbox"/>



User manual

3.9 Remote Viewing via 3G Smart Phone

3.9.1 Search from iPhone / iPad Apple APP Store: "AirLink WiFi Networking Corp." or "MyiHome AirLinkWiFi.H.264"

Process:

Device Name: any word you like

Address: 012059035.myihome.org (according to each IP camera myihome.org user account or you can use static IP address)


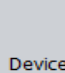
Port: 34599 by fixed.

User ID: default is "admin"


Password: default is blank

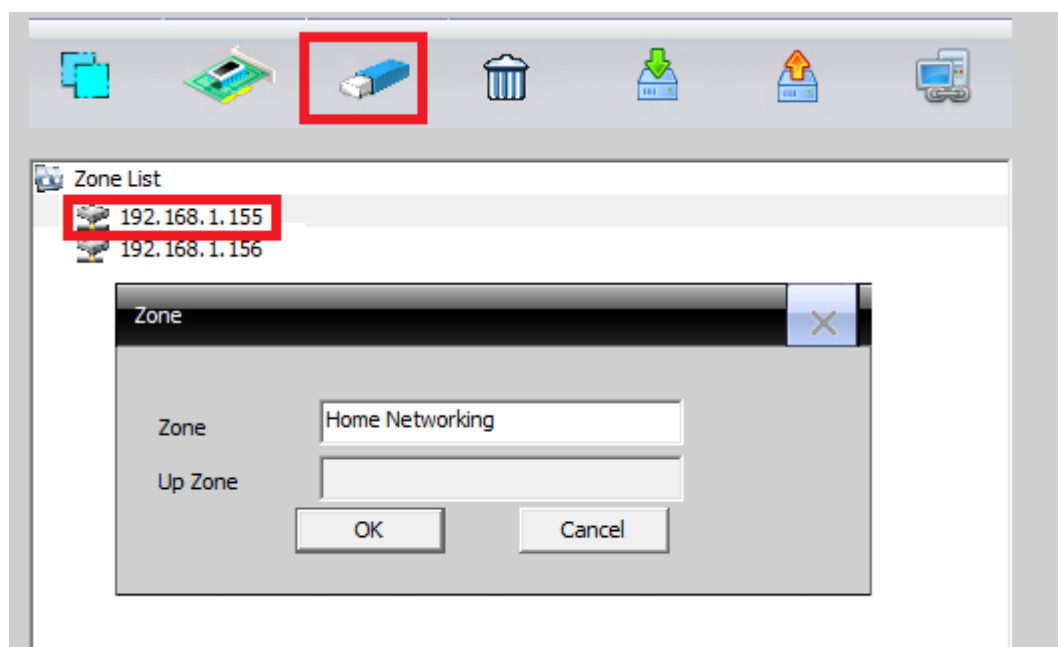
Max Channel: 1 (for camera 1, channel 2 for camera 2)

3.10 Remote control CMS

3.10.1 Click ->  System -> 

3.10.2 Add Zone name

Select top list, click ->  Modify Zone name as below image



3.10.3 Appear at left list -> Select "Domain" add domain at "user account. myihome.org" -> click "Add Device" auto in left list. Now you can remote viewing and control by Out LAN

Caution: The Network is not same as your IP Camera Local Area Network (LAN)



User manual

Zone List

Home Networking

192.168.1.155

192.168.1.156

012059035

IP Search

Add Device

EditDevice

Device Name

012059035

LoginType

☐ IP Address
 ☒ Domain

Domain

012059035.myihome.org

Port

34567

User Name

admin

Password

Zone

Home Networking

Setting -> System -> Network

Net Card

Wire Netcard

☐ DHCP Enable

IP Address

192 . 168 . 1 . 155

Subnet Mask

255 . 255 . 255 . 0

Gateway

192 . 168 . 1 . 1

Use DNS server address below-----

Primary DNS

202 . 101 . 172 . 35

Secondary DNS

202 . 101 . 172 . 35

Media Port

34567

HTTP Port

8888

MAC

00 : 23 : d3 : 00 : 46 : 38

☒ High Speed Download

Transfer Policy

Quality Preferred

Adaptive

Quality Preferred

Fluency Preferred

NetWork Priority

Main menu guideline

Main Menu	Submenu	Function summary
Record	Record	Set record config, record type, record period, etc.



User manual

	Snapshot	Set snapshot period, type , etc.
Alarm	Video motion	Set motion detect alarm channel, sensitivity, area, linkage parameters: alarm output, snapshot, recording, PTZ, email sending, ftp upload, etc.
	Video blind	Set video blind alarm channel, sensitivity, linkage parameters, alarm output, snapshot, recording, PTZ, email sending and ftp upload, etc.
	Video lost	Set video lost alarm channel and linkage parameters: alarm output, recording, snapshot, PTZ, Email sending, FTP upload, etc.
	Alarm input	Set alarm input channel and linkage parameters: alarm output, recording, snapshot, PTZ, email sending, FTP upload, etc.
	Alarm output	Set alarm mode: configuration, manual, stop
	Abnormal	Storage device not exist, not enough space, access storage device fail, IP conflict, network abnormal alarm
System	General	Set system time, data format, language, hard disk full time operation, machine number, video format, output mode, summertime, stay time
	Encode	Set encode mode: encode mode, resolution, frame rate, bit rate, image quality, code stream value; I frame interval parameter, video/audio enable.



User manual

	Network	Set basic net parameter, and DHCP 、 DNS parameter , auto-gain IP address, network high-speed download, net transmission tactics
	Net service	ARSP、 Mobile monitor、 UPNP、 FTP、 WiFi、 3G、 alarm center、 RTSP、 PPPOE、 NTP、 Email、 IP authority、 DDNS parameter, etc.
	GUI display	Set channel title, cover area, time title, channel time overlap and position
	PTZ Config	Set channel, PTZ protocol, address, baud rate, data bit, stop bit, parity
	RS485	Set protocol, address, baud rate, data bit, stop bit, parity
	RS232	Set serial port function, baud rate, data bit, stop bit, parity
	Camera parameter	Exposure mode, Day/Night mode, Backlight compensation, Auto iris, profile, AE reference, AGC, slow shutter, IR_CUT, Image、 Over-turn、 anti-flicker etc
Advanced	HDD Manage	Do operation to TF card, such as set read/writ, read only, redundant, format disk, recover, partition, etc.
	Account	Modify user, group or password. Add user or group. Delete user or group.
	Auto maintain	Set auto reboot system, time to auto delete file



User manual

	Default	Restore setting status of : regular, encode, record, alarm, network, net service, GUI display, serial settings, account manage
	Import & Export	Config import, Config export, Log export
	Upgrade	To do net upgrade via IE or client software
	Reboot	IPC soft reboot
Info	HDD info	Show ttl space of HDD, type, space left, record time, etc
	Log	Can base on record type and time to search log, can clear the log information
	Version	Show alarm input output, system version, build date, etc

Camera hardware notification:

- . Power Port: DC power supply Status Indication Light:
 - . Red - power on or alarm activated
 - . Green - normally Working or Record
- . Alarm Input: normal open(default) and close
- . Alarm Output: alarm activated output
- . RS485: PTZ or other RS485 devices
- . Reset: Press on 5 seconds to reset to factory default settings, include IP settings
- . Audio Input: connect with audio picker
- . Audio Output: connect with speaker
- . Video Output: BNC/TV output, use for adjust camera and view IP settings