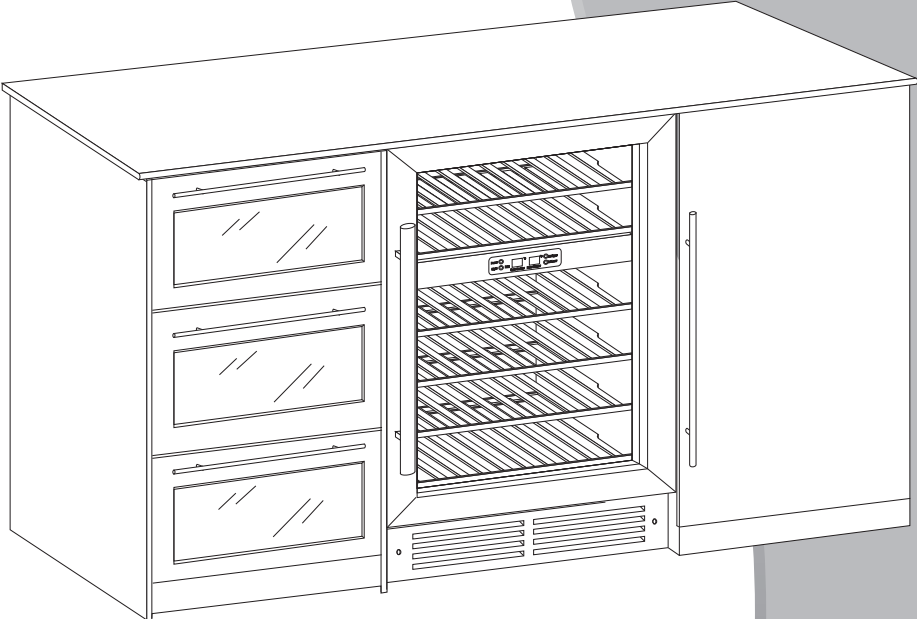


# Built-in Wine Cooler



**BWC600SS**

# *Important Safeguards*

**When using an electrical appliance, basic precautions should always be followed to reduce the risk of fire, electric shock, and injury to persons, including the following:**

## *For Your Safety*

*Read all instructions carefully, even if you are quite familiar with the appliance.*

- Use this appliance only as described in this manual. Other uses not recommended may cause fire, electric shock or personal injury.
- This appliance is not intended for use by young children or infirm persons unless they have been adequately supervised by a responsible person to ensure that they can use the appliance safely.
- Young children should be supervised to ensure that they do not play with the appliance.
- To protect against the risk of electric shock, DO NOT IMMERSE the unit, cord, or plug in water or spray any other liquid.
- Unplug the appliance from the plug socket when not in use, when moving from one location to another and before cleaning.
- To disconnect the appliance, grip the plug and pull it from the wall outlet. Never pull by the cord.
- Do not operate the appliance in the presence of explosive and/or flammable fumes.
- Do not place the appliance or any of its parts near an open flame, cooking or other heating appliance.
- Do not operate the appliance with a damaged cord or plug, if the product malfunctions, or if it is dropped or damaged in any manner.
- The use of attachments not recommended by the manufacturer may be hazardous.
- Place the unit on a dry level surface.

- Do not operate if the housing is removed or damaged.
- A loose fit between the wall socket and plug may cause overheating and damage to the plug. Contact a qualified electrician to replace loose or worn socket.
- Locate the unit away from direct sunlight and sources of heat (stove, heater, radiator, etc.).

**WARNING: To reduce the risk of fire, electric shock or personal injury, unplug or disconnect the appliance from the power supply before servicing.**

## *Save These Instructions*

If you are experiencing problems, check the Troubleshooting Guide at the back of this manual. It lists causes of minor operating problems that you can correct yourself.

# Connection to the Mains Supply

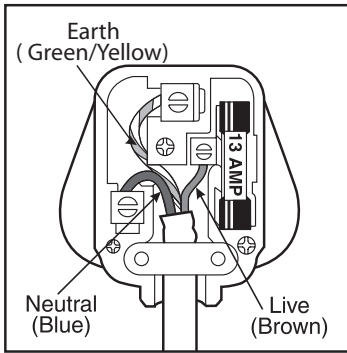
Check that the voltage marked on the product corresponds with your supply voltage.

This product is fitted with a 13A plug complying with BS1363. If this plug is unsuitable or needs to be replaced, please note the following:

## WARNING: THIS APPLIANCE MUST BE EARTHED

**Important:** The wires in the mains lead are coloured in accordance with the following code:

- GREEN/YELLOW - EARTH
- BLUE - NEUTRAL
- BROWN - LIVE



This appliance is fitted with a plug fitted with a 13 amp fuse. Should the fuse fail, then it must be replaced with an ASTA approved fuse (conforming to BS1362) of the same rating. If you need to replace the plug or if the plug is of the incorrect type for your socket, remove it and replace it with an appropriate type. Dispose of the old plug safely.

As the colours of the wires in the mains lead of this appliance may not correspond with the coloured markings identifying the terminals in your plug, proceed as follows: The **GREEN/YELLOW** wire is the **EARTH** and must be connected to the terminal which is marked with the letter 'E' or by the earth symbol (⊕) or coloured **GREEN** or **GREEN/YELLOW**.

The **BLUE** wire is the **NEUTRAL** and must be connected to the terminal which is marked with the letter 'N' or coloured **BLACK**.

The **BROWN** wire is the **LIVE** wire and must be connected to the terminal which is marked with the Letter 'L' or coloured **RED**.

Always ensure that the plug cord grip is fastened correctly.

If in doubt consult a qualified electrician who will be pleased to do this for you. This product conforms to EC Directive 92/31 /EEC with respect to Electromagnetic Compatibility.

## NON-REWIREABLE MAINS PLUG

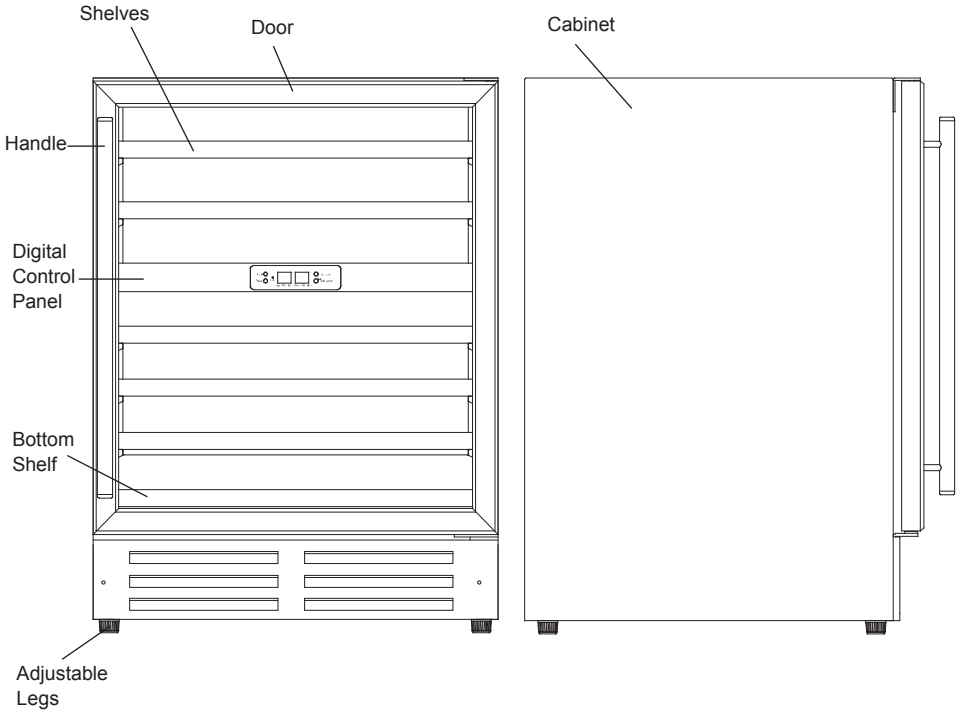
If your appliance is supplied with a nonrewireable plug fitted to the mains lead, you will find that it incorporates a fuse, the value of which is indicated either on the base of the plug or on the fuse carrier. Should the fuse need replacing, you must use an ASTA approved one (conforming to BS1362) of the same rating.

If the fuse cover is lost, the plug must not be used until a replacement is obtained from an electrical supplier.

If you need to remove the plug, cut it from the mains lead and immediately dispose of it. Never attempt to re-use this plug or insert it into a socket outlet as there is a very great risk of an electric shock.



# Features of Your Wine Cooler



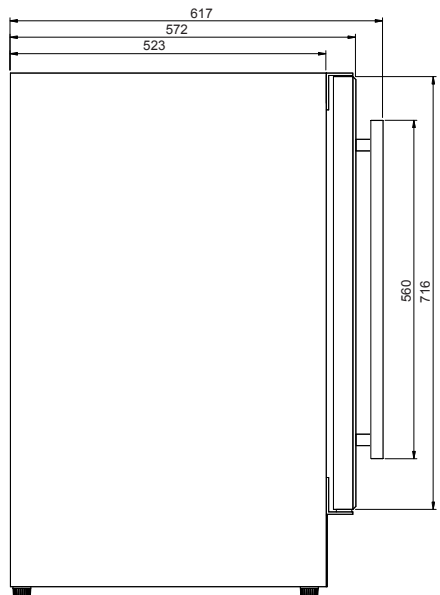
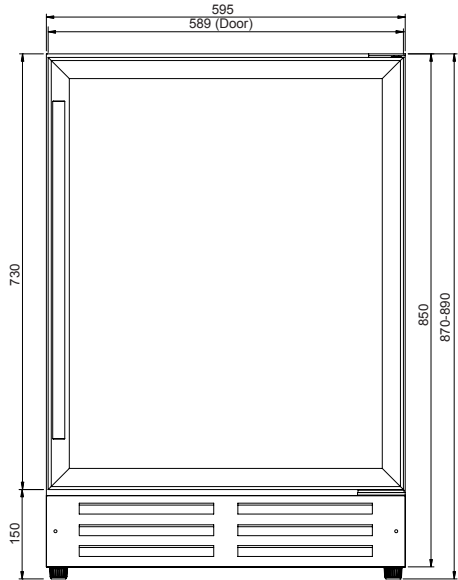
# Installation Instructions

## Before Using Your Wine Cooler

- Remove all exterior and interior packing.
- Before connecting the Wine Cooler to the power source, let it stand upright for approximately 2 hours. This will reduce the possibility of a malfunction in the cooling system caused by handling during transportation.
- Clean the interior surface with lukewarm water using a soft cloth.
- The door on this appliance can be opened from either the left or the right side. The unit is delivered with the door opening on the left side. Should you wish to open the door from the right, follow the instructions 'Reversing the door swing of your appliance'.

## Installation of Your Wine Cooler

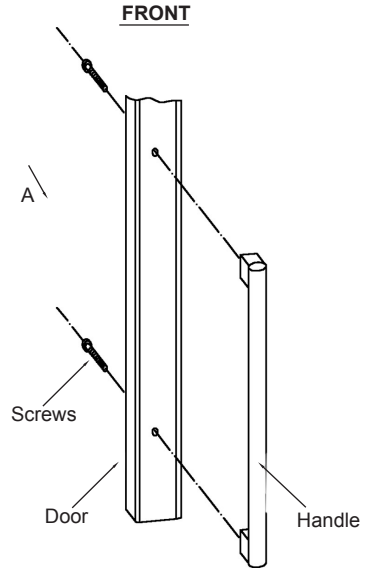
- The appliance is designed to be built in between kitchen cabinets and is supplied with adjustable feet that can be altered to fit various worktop heights. This wine cooler is fully compatible with any 600mm deep kitchen unit.
- Place your Wine Cooler on a floor that is strong enough to support it when it is fully loaded. To level your Wine Cooler, adjust the front leveling leg at the bottom of the Wine Cooler.
- Locate the Wine Cooler away from direct sunlight and sources of heat (stove, heater, radiator, etc.). Direct sunlight may affect the acrylic coating and heat sources may increase electrical consumption. Extreme cold ambient temperatures may also cause the unit not to perform properly.
- Avoid locating the unit in damp areas.
- Plug the Wine Cooler into an exclusive, easily accessible plug socket. Any questions concerning power and/or earthing should be directed towards a qualified electrician or an authorised products service centre.
- The air vent at the front of the appliance must never be covered or blocked in any way.



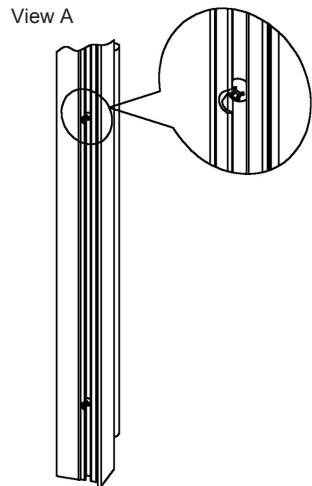
## Attention

- Store wine in sealed bottles.
- Do not overload the cabinet.
- Do not open the door unless necessary.
- Do not cover shelves with aluminum foil or any other shelf material which may prevent air circulation.
- Should the wine cooler be left empty for long periods it is suggested that the appliance is unplugged, and after careful cleaning, leave the door ajar to allow air to circulate inside the cabinet in order to avoid possible condensation, mold or odours forming.

## Installing the Handle



### **BACK**



1. Remove the door gasket on the side you wish to install the handle - you can see two designated holes for handle installation.
2. Install the handle tightly as shown above with two screws provided.
3. Replace the door gasket.

# Reversing the Door Swing of Your Appliance

Should you desire to reverse the opening direction, please follow the instructions below .

Figure 1

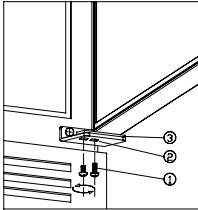


Figure 2

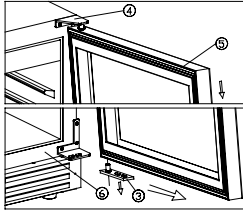


Figure 3

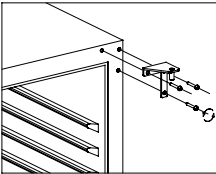
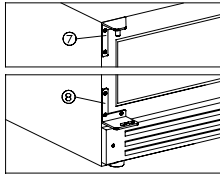


Figure 4



- ① Lock Screws
- ② Right Lower Hinge
- ③ Door Shaft Assembly
- ④ Right Top Hinge
- ⑤ Door
- ⑥ Cabinet
- ⑦ Left Top Hinge
- ⑧ Left Lower Hinge

1. Open the glass door and remove the two screws under the right bottom corner of the glass door that are used to hold the right lower hinge to the glass door. Be careful to support the glass door with hands to prevent it dropping after removing the screws. (Figure 1)
2. Pull down to remove the glass door and place it on a padded surface to prevent scratching it. (Figure 2)
3. Remove the right top hinge and right lower hinge. (Figure 3). Remove the left top hinge and left lower hinge from the plastic bag that includes the instruction manual then install them at the designated positions at the left side of cabinet.
4. Turn around the glass door 180° and reinstall it.

**Note: All parts removed must be saved to allow the door swing to be reversed.**

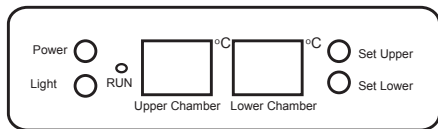
# Operating Your Wine Cooler

The Wine Cooler should be placed in a position where the ambient temperature is between 0-35°C. If the ambient temperature is above or below this range, the performance of the unit may be affected. For example, placing your unit in extreme cold or hot conditions may cause interior temperatures to fluctuate. The range of 5-18°C may not be reached.

## Note:

- **When you use the Wine Cooler for the first time or restart the Wine Cooler after having been shut off for a long time, there could be a few degrees variance between the temperature you select and the one indicated on the LED readout. This is normal and it is due to the length of the activation time. Once the Wine Cooler is running for a few hours everything will be back to normal.**
- **If the unit is unplugged, power lost, or turned off, you must wait 3 to 5 minutes before restarting the unit. If you attempt to restart before this time delay, the Wine Cooler will not start.**

## The Controls of Your Wine Cooler



### RUN

Indicator light illuminates to signify the cooling mode is currently in operation.

### Light

To control the inner light turn on/off.

### Power

To control this appliance turn on/off.

### “Set Upper” Button

Used to set temperature in upper zone.

### “Set Lower” Button

Used to set temperature in lower zone.

## Setting the Temperature Control

The wine cooler has two temperature zones.

- Upper zone – temperature range 5-12°C
- Lower zone – temperature range 12-18°C
- You can set the required temperature in either zone by pushing the **Set Upper** or **Set Lower** button. When you push the button for the first time, the LED readout will show the previously set temperature for that zone (the temperature preset at the factory is 12°C).
- *To set the temperature in the Upper Zone – Press **Set Upper** button once. The present temperature will flash. Scroll through the temperature settings until you reach the required setting. The temperature will decrease by 1°C every time the button is pressed until minimum temperature is reached, at which point it will then revert back to its maximum setting and start again.*
- *To set the temperature in the Lower Zone – Press the **Set Lower** button and follow the instructions above.*
- To view the temperature set in either zone at any time, press the corresponding “**Set Upper**” or “**Set Lower**” button, the “**Set**” temperature will temporarily flash in the LED display for 5 seconds.

## Shelves

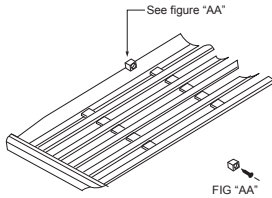
- To prevent damaging the door gasket, make sure the door is fully opened when pulling shelves out.
- For easy access to the bottles stored, pull the shelves out. Shelving is designed with an emergency stop to prevent them being removed too far when loaded.



# Care and Maintenance

## Removing Shelves

- To remove any of the shelves from the rail compartment, remove the plastic stops on either side of the shelf by unscrewing the Phillips screws that holds each post in place. Please ensure these are replaced when the shelf is put back.



## Humidity Control

The wine cooler is equipped with a system for maintaining the correct level of humidity. Fill the small plastic reservoir (humidity box)  $\frac{3}{4}$  full with water, and fit onto the runners found on the top shelf of the wine cooler. Check the water level regularly and refill as necessary.

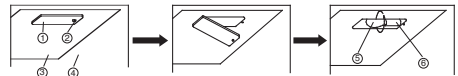
Please ensure the reservoir is positioned correctly on the runners on the top shelf to avoid the possibility of water spillage.

## Replacing Your Light Bulb

### NOTE:

**Before removing the light bulb, turn off the appliance and disconnect from the power supply. Failure to do so could result in electrical shock or personal injury.**

- Turn off the light.
- Remove the screw ② with a Phillips screwdriver.
- Pull down to remove the lamp cover ①.
- Unscrew the bulb ⑤.
- Replace with a 15-watt bulb that is the same shape and size.
- Replace the lamp cover ① and tighten screw ②.



- |              |                    |
|--------------|--------------------|
| ① Lamp Cover | ④ Interior Section |
| ② Screw      | ⑤ Bulb             |
| ③ Top        | ⑥ Lamp Holder      |

**Note: The bulb should not exceed 15 watts.**

## Cleaning Your Wine Cooler

- Turn off the power, unplug the appliance, and remove all items including shelves and rack.
- Wash the inside surfaces with a warm water and baking soda solution. The solution should be about 2 tablespoons of baking soda to a pint of water.
- Wash the shelves with a mild detergent solution.
- Wring excess water out of the sponge or cloth when cleaning any area of the controls.
- Wash the outside cabinet with warm water and mild liquid detergent. Rinse well and wipe dry with a clean soft cloth.

## Power Failure

- Most power failures are corrected within a few hours and should not affect the temperature of your appliance if you minimize the number of times the door is opened. If the power is going to be off for a longer period of time, you need to take the proper steps to protect your contents.

## Holiday Time

- **Short holidays:** Leave the Wine Cooler in operation for holidays of less than three weeks.
- **Long absences:** If the appliance will not be used for several months, remove all items, turn off the appliance and unplug. Clean and dry the interior thoroughly. To prevent odour and mold growth, leave the door open slightly: blocking it open if necessary.

## Moving Your Wine Cooler

- Remove all items.
- Securely tape down all loose items (shelves) inside your appliance.
- Turn the adjustable leg up to the base to avoid damage.
- Tape the door shut.
- Be sure the appliance stays secure in the upright position during transportation. Also protect outside of appliance with a blanket, or similar item.

## Energy Saving Tips

- The Wine Cooler should be located in the coolest area of the room, away from heat producing appliances, and out of the direct sunlight.

# Problems with Your Wine Cooler

You can solve many common Wine Cooler problems easily, saving you the cost of a possible service call. Try the suggestions below to see if you can solve the problem before calling customer service.

## Troubleshooting Guide

<b>Problem</b>	<b>Possible Cause</b>
Wine Cooler does not operate.	Not plugged in. The appliance is turned off. The circuit breaker tripped or a blown fuse.
Wine Cooler is not cold enough.	Check the temperature control setting. External environment may require a higher setting. The door is opened too often. The door is not closed completely. The door gasket does not seal properly.
Turns on and off frequently.	The room temperature is hotter than normal. A large amount of contents has been added to the Wine Cooler. The door is opened too often. The door is not closed completely. The temperature control is not set correctly. The door gasket does not seal properly.
The light does not work.	Not plugged in. The circuit breaker tripped or a blown fuse. The bulb has burned out. The light button is "OFF".
Vibrations.	Check to assure that the Wine Cooler is level.
The Wine Cooler seems to make too much noise.	A slight humming noise may come from the flow of the refrigerant, which is normal. As each cycle ends, you may hear gurgling sounds caused by the flow of refrigerant in your Wine Cooler. Contraction and expansion of the inside walls may cause popping and crackling noises. The Wine Cooler is not level.
The door will not close properly.	The Wine Cooler is not level. The door was reversed and not properly installed. The gasket is dirty. The shelves are out of position.