

# SILVERSATA I INTERNAL™

## USER'S MANUAL

Revised May 4, 2007



### Features

- Swappable tray in a standard 5 1/4" internally mountable bay (same size as most CD-ROM drives). A spare internal SATA port is required.
- Hot-swappable tray allows you to switch drives without shutting down the system. (Assuming your computer's internal SATA host supports this feature.)
- Tray is compatible with other products in the SilverSATA series. Use the SilverSATA I Internal to easily access one of the mirrored drives from a Silver SATA II SR in RAID 1 mode.
- Durable, aluminum alloy case offers excellent heat dissipation.
- Integrated fan ensures the hard drive stays cool.

## Installation Instructions

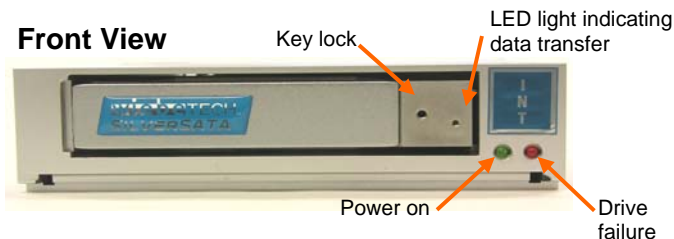
**1. Check the accessories with your SilverSATA I Internal.** Please contact WiebeTech if any parts are missing or damaged. The box should contain the following items:



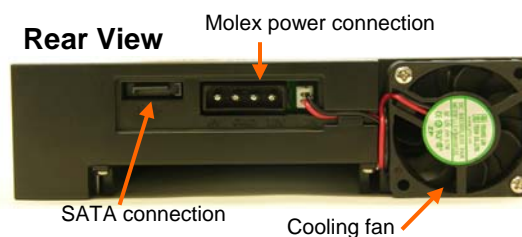
Accessories	Quantity
SilverSATA Tray	1
18" SATA Cable	1

**2. Take a moment to familiarize yourself with the parts of the SilverSATA I Internal.** This will help you to better understand the remaining instructions.

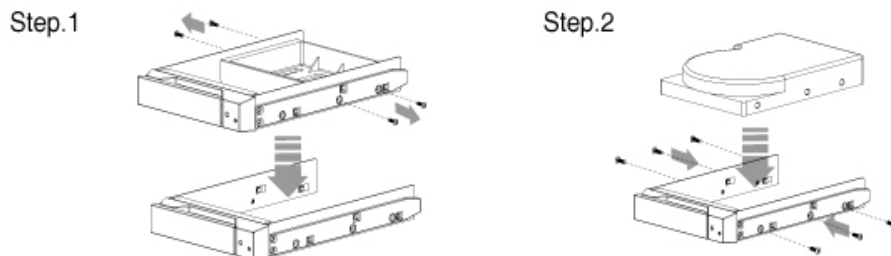
#### Front View



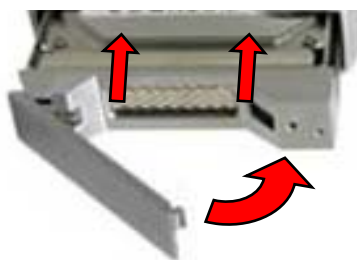
#### Rear View



**3. Install your hard drive into the tray.** Unlock the tray by using the plastic key. Slide the tray out of the outer casing. Remove the plastic spacer. Lay the drive into the frame of the removable tray, making sure it lays flat. Align the 4 screw positions then use the included screws (#6-32) to secure the drive into position.



**4. Insert the tray into the SilverSATA I unit.** Gently push the tray along the sliding track into the hard drive compartment and then close the tray, as shown below.

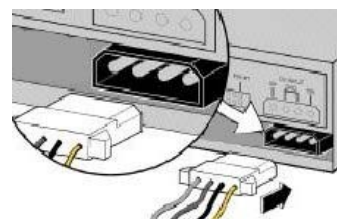


**5. Mount SilverSATA I Internal in your computer.** In an open 5 1/4" bay in your computer, install SilverSATA I Internal just as you would a CD/DVD ROM.

**6. Plug in the data cable.** The SilverSATA I Internal connects to your computer through SATA. One end of the cable connects to the back of the unit. Insert the other end into an available port on your computer's motherboard or add-in card.



**7. Plug in the power.** Take an unused Molex 4-wire power connector from inside your computer and plug that into the back of SilverSATA I Internal. If your drive is already formatted, you can begin using the unit right away. New hard drives will need to be formatted before they can be used.





## Usage with Windows computers

### Compatibility

The SilverSATA I Internal is fully plug-and-play with Windows 2000, XP, Server 2003, and Vista. No additional drivers are needed. However, the SATA host you are plugging into will probably require driver or firmware installation.

### Formatting Volumes

Before you can use a brand new hard drive in your SilverSATA I Internal, you must first format the drive into a volume. Use Disk Management, which you can find by right-clicking on My Computer then selecting Manage. Select NTFS for the format type. If you wish to format FAT-32 for cross-platform compatibility, you will need to use a third-party utility to do so. Windows XP will not create FAT-32 volumes larger than 32GB.

After the volume is formatted, an icon representing the drive volume will appear in My Computer. You can now use the volume just like an internal hard drive.

### Ejecting Volumes

Unlike detachable storage devices that connect via FireWire or USB, devices connected via SATA cannot usually be ejected. It is possible to disable the device using Device Manager. Whether or not you choose to disable the device in this way, always make sure the drive is not being accessed before removing it. If a drive is removed in the middle of a data input/output process, data loss may result.

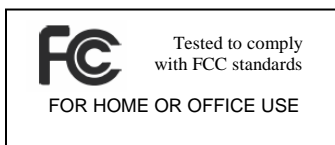
## Technical Specifications

<b>Product name/code:</b>	SilverSATA I Internal
<b>Host Interfaces:</b>	SATA
<b>Data Interface Speeds:</b>	SATA 3.0GHz (up to 300MB/sec)
<b>Hardware Requirements:</b>	<ul style="list-style-type: none"> <li>• Empty 5 ¼" bay in a Windows or Linux-based PC</li> <li>• internal power and SATA ports</li> </ul>
<b>Drive Types Supported:</b>	3.5" SATA (Serial-ATA) hard drives up to 750GB+
<b>Hot-Swap Capable:</b>	Yes, if internal SATA host permits
<b>Operating Temperature:</b>	50 – 85° Fahrenheit (10 – 30° Celsius)
<b>Operating Humidity:</b>	5% to 95%, noncondensing
<b>Cooling Fan:</b>	1 x 4 cm Fan
<b>Certification:</b>	CE/FCC
<b>External Material:</b>	Made of tough, durable aluminum
<b>Shipping Weights:</b>	2.2 pounds, sans drive 3.2 pounds, with drive
<b>Dimensions:</b>	(149mm W x 194mm L x 42mm H)
<b>Warranty:</b>	1-year limited warranty. See warranty statement for details and limitations. WiebeTech offers free phone support for 90 days after purchase. Email support is available at <a href="mailto:support@wiebetech.com">support@wiebetech.com</a> .

SilverSATA is a trademark of WiebeTech LLC. Other marks are the property of their respective owners.

© 2007 WiebeTech LLC. All rights reserved.

**FCC Compliance Statement:** "This device complies with Part 15 of the FCC rules. Operation is subject to the following two conditions: (1) This device may not cause harmful interference, and (2) this device must accept any interference received, including interference that may cause undesired operation."



In the event that you experience Radio Frequency Interference, you should take the following steps to resolve the problem:

- 1) Ensure that your unit is plugged into a grounded electrical outlet.
- 2) Use a data cable with RFI reducing ferrites on each end.
- 3) Use a power supply with an RFI reducing ferrite approximately 5 inches from the DC plug.

If you have any questions or problems, please contact [support@wiebetech.com](mailto:support@wiebetech.com) for technical support. If you are interested in purchasing more WiebeTech products, check our website or contact [sales@wiebetech.com](mailto:sales@wiebetech.com). We appreciate being able to serve you!