

D-Link Quick Installation Guide

This product can be set up using any current web browser, i.e., Internet Explorer 5x, Netscape Navigator 4x.



DI-614+
D-Link AirPlus™
Wireless Broadband Router

Before You Begin

1. If you purchased this router to share your high-speed Internet connection with other computers, you must have either an Ethernet-based Cable or DSL modem with an established Internet account from an Internet Service Provider (ISP).
2. It's best to use the same computer that is connected to your modem for configuring the DI-614+ Wireless Router. The DI-614+ acts as a DHCP server and will assign all the necessary IP address information on your network. **See Appendix at the end of this Quick Installation Guide or the Manual on the CD-ROM for setting each network adapter to automatically obtain an IP address.**

Check Your Package Contents

These are the items included with your DI-614+ purchase:



• **DI-614+ Wireless Broadband Router**



• **CD-ROM (containing Manual and Warranty)**



• **Ethernet (CAT5 UTP) Cable**



• **5V DC, 2.5A Power Adapter**



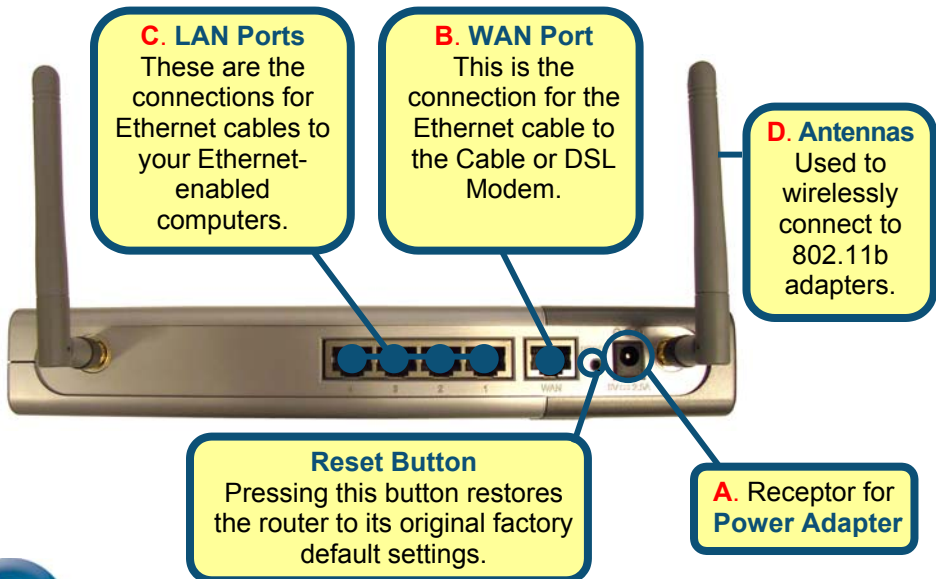
Using a power supply with a different voltage rating will damage and void the warranty for this product.

If any of the above items are missing, please contact your reseller.

1

Connecting The DI-614+ Wireless Router To Your Network

- A.** First, connect the power adapter to the **receptor** at the back panel of the DI-614+ and then plug the other end of the power adapter to a wall outlet or power strip. The Power LED will turn **ON** to indicate proper operation.
- B.** Insert one end of an Ethernet cable to the **WAN port** on the back panel of the DI-614+ and the other end to the Ethernet port located on your Cable or DSL modem. The WAN LED light will illuminate to indicate proper connection.
- C.** Insert an Ethernet cable to **LAN port 1** on the back panel of the DI-614+ and an available Ethernet port on the network adapter in the computer you will use to configure the DI-614+. The LED light for LAN Port 1 will illuminate to indicate proper connection. (Note: Some computers already have network adapters pre-installed.)
- D.** Computers equipped with 802.11b wireless adapters will be able to connect to the DI-614+. The DWL-650+ AirPlus Wireless Cardbus Adapter and the DWL-520+ AirPlus Wireless PCI Adapter will be able to connect out of the box with the router using their default wireless settings.



2

Restart Your Computer

3

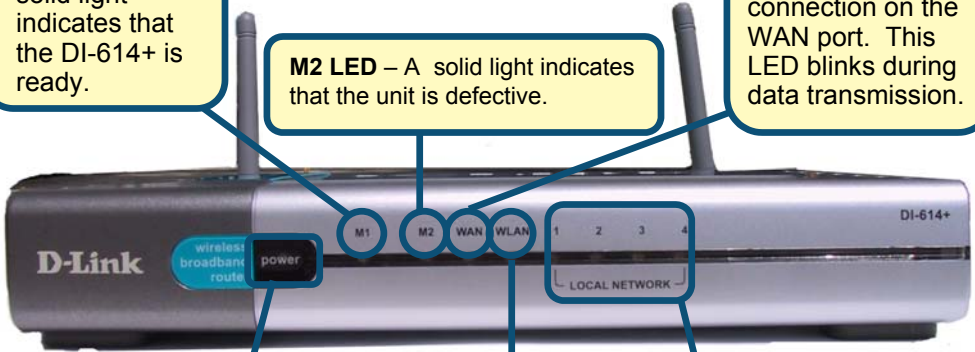
Connecting Additional Computers To The DI-614+ Wireless Router

Using additional Ethernet (CAT5 UTP) cables, connect your Ethernet-equipped computers to the remaining Ethernet LAN ports on the back panel of the DI-614+.

M1 LED – a solid light indicates that the DI-614+ is ready.

M2 LED – A solid light indicates that the unit is defective.

WAN LED – a solid light indicates connection on the WAN port. This LED blinks during data transmission.



POWER LED – a solid light indicates a proper connection to the power supply.

WLAN LED – a solid light indicates that the wireless segment is ready. This LED blinks during wireless data transmission.

LOCAL NETWORK LEDs – a solid light on the port indicates a connection to an Ethernet enabled computer on ports 1-4. This LED blinks during data transmission.

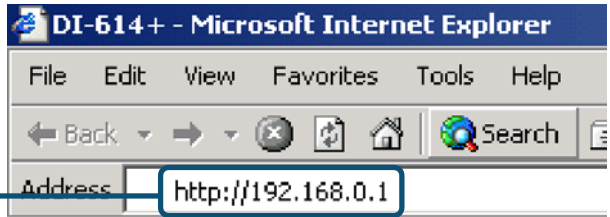
When you have completed the steps in this *Quick Installation Guide*, your connected network should look similar to this:



4

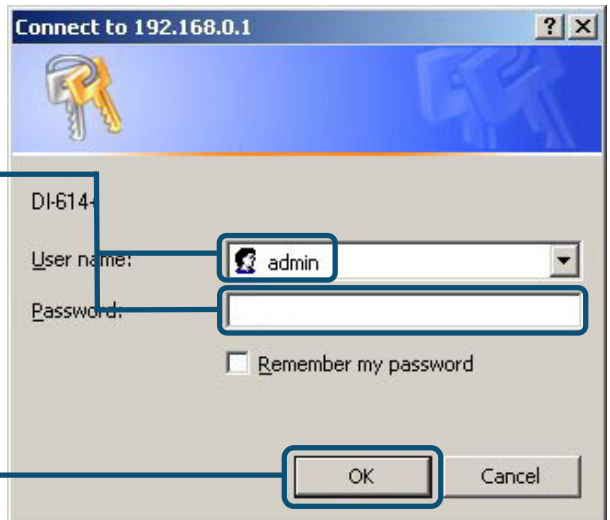
Using The Setup Wizard

Open your **Web browser** and type **“http://192.168.0.1”** into the URL address box. Then press the **Enter** or **Return** key.



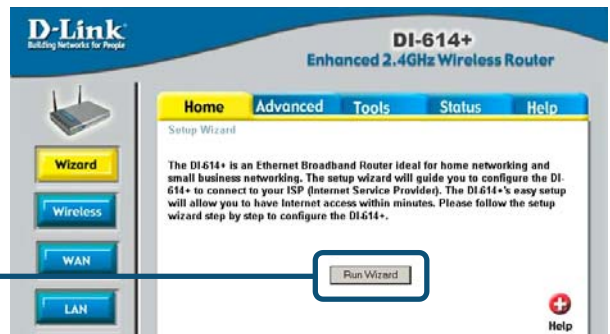
The logon pop-up screen will appear.

Type **“admin”** for the username and leave the password field blank.



Click **OK**

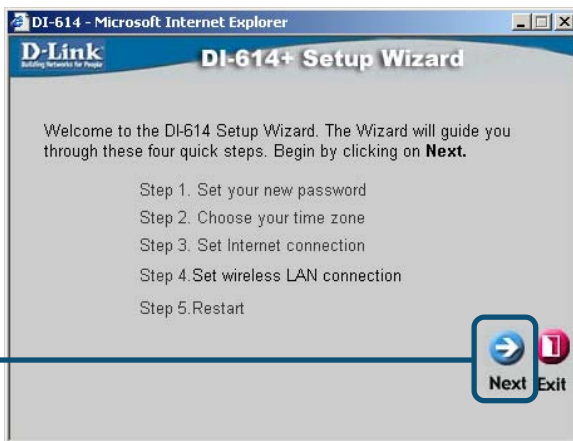
Once you have logged in, the **Home** screen will appear.



Click **Run Wizard**

You will see the following screens.

Click **Next**



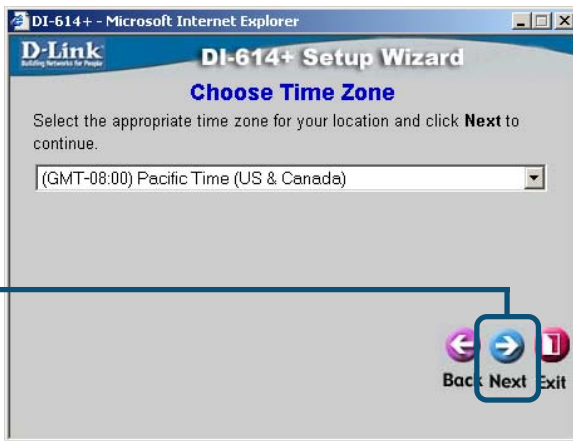
Step 1 - Set up your new password. You have the option to establish a password.

Click **Next**



Step 2 - "Choose your time zone", you will be prompted to select the type of Internet connection for your router (see next page).

Click **Next**

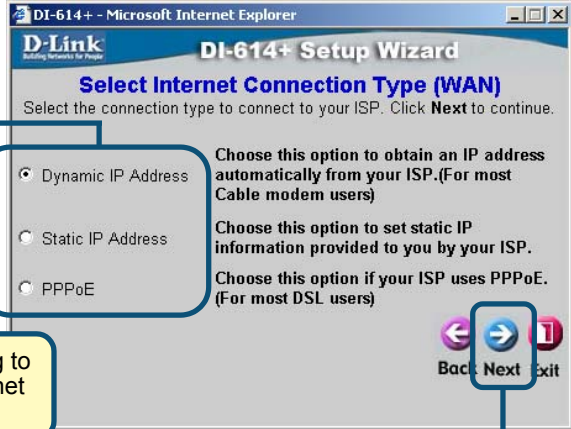


4

The Setup Wizard (continued)

Select the type of Internet connection for your router.

Select one of these settings




- Dynamic IP Address
- Static IP Address
- PPPoE

Choose this option to obtain an IP address automatically from your ISP. (For most Cable modem users)

Choose this option to set static IP information provided to you by your ISP.

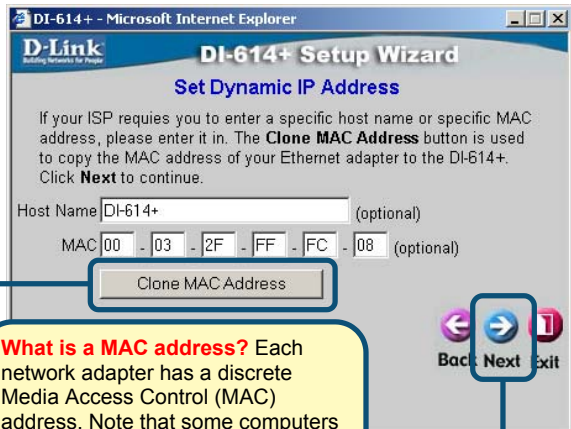
Choose this option if your ISP uses PPPoE. (For most DSL users)

 If you are unsure of which setting to select, please contact your Internet Service Provider.

Click **Next**

If you selected **Dynamic IP Address**, this screen will appear:

Click the **“Clone MAC Address”** button to automatically copy the MAC address of the network adapter in your computer. You can also manually type in the MAC address.

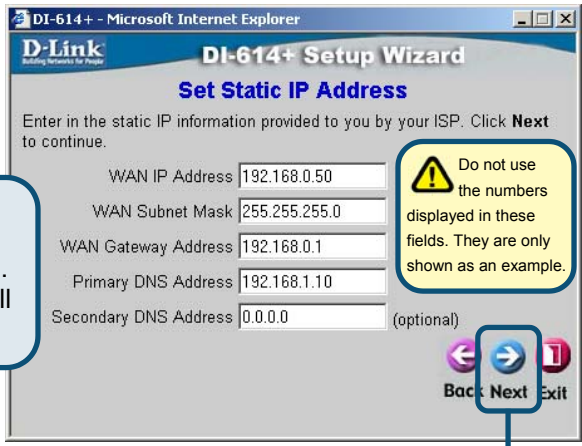


What is a MAC address? Each network adapter has a discrete Media Access Control (MAC) address. Note that some computers and peripherals may already include built-in network adapters.

Click **Next**


If your ISP requires a **Static IP Address**, and this option is selected, then this screen will appear:

Enter the IP address information originally provided to you by your ISP. You will need to complete all the required fields.

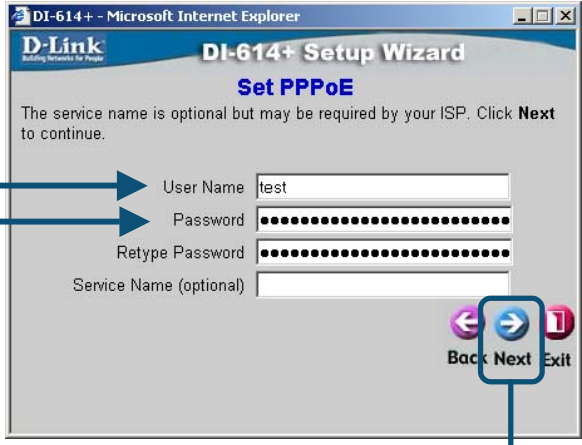


Click **Next**

If your ISP uses **PPPoE** (Point-to-Point Protocol over Ethernet), and this option is selected, then this screen will appear:

 Please be sure to remove any existing PPPoE client software installed on your computers.

Enter in the username and password provided to you by your ISP.



Click **Next**

4

The Setup Wizard (continued)

Wireless Setup

The default wireless settings are:

SSID = **default**

Channel = **6**

You can change these settings to match an existing wireless network.

DI-614+ - Microsoft Internet Explorer

D-Link Building Networks for People

DI-614+ Setup Wizard

Set Wireless LAN Connection

Enter in the SSID name and Channel number to be used for the Wireless Access Point. Click **Next** to continue.

SSID

Channel

Back **Next** Exit

Click **Next**

Encryption

The DI-614+ is capable of three levels of wireless encryption - 64-bit, 128-bit, and 256-bit. **By default the encryption is disabled.** You can change the encryption settings for more secure wireless communication.

DWL-900AP+ - Microsoft Internet Explorer

D-Link Building Networks for People

DI-614+ Setup Wizard

If you wish to use encryption, enable it here and enter the encryption Key Values. Click **Next** to continue.

Wep Enable Disable

Wep encryption

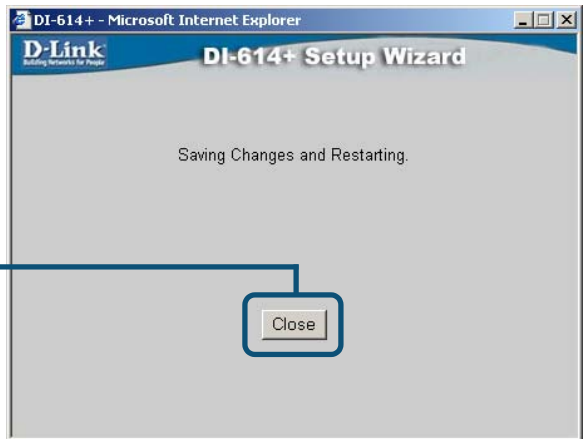
Key 1

Back **Next** Exit

Click **Next**

5

Your Setup is Complete!



You will be returned to the **Home** tab.

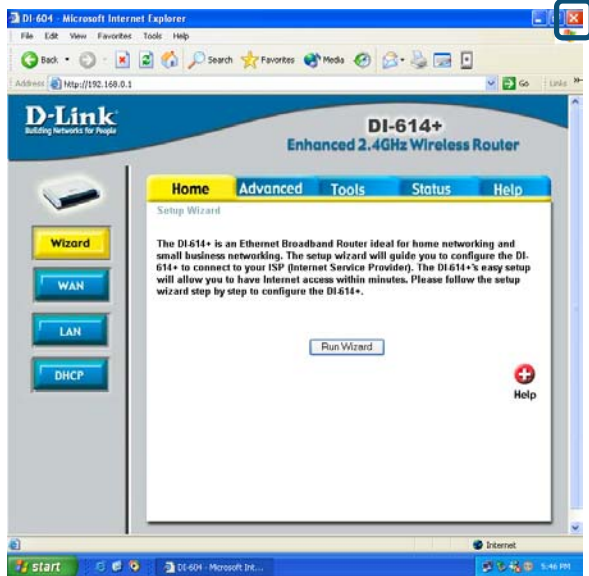
5

Test Your Internet Connection

Click **Exit**

Then **relaunch** your Web browser (i.e., *Internet Explorer* or *Netscape Navigator*), to link to your favorite Web site to test your Internet connection.

For additional settings or information, refer to the **Advanced**, **Tools**, or **Status** tabs on the web-management interface; or to the manual located on the CD-ROM.



Technical Support

You can find the most recent software and user documentation on the **D-Link** website.

D-Link provides free technical support for customers within the United States for the duration of the warranty period on this product.

U.S. customers can contact **D-Link** technical support through our web site or by phone.

D-Link Technical Support over the Telephone:

(877) 453-5465

24 hours a day, seven days a week

D-Link Technical Support over the Internet:

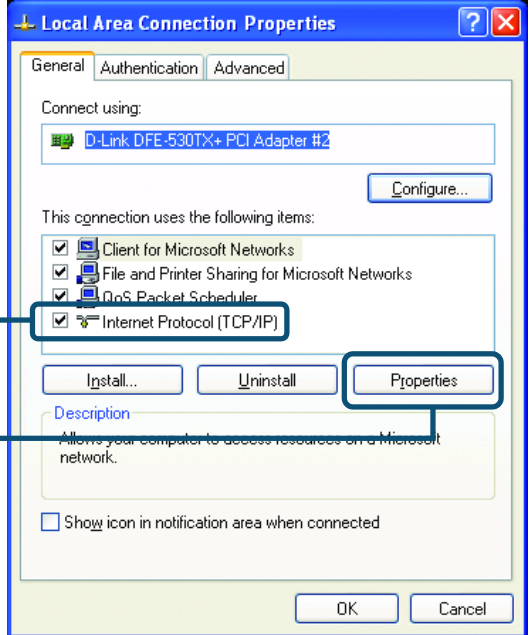
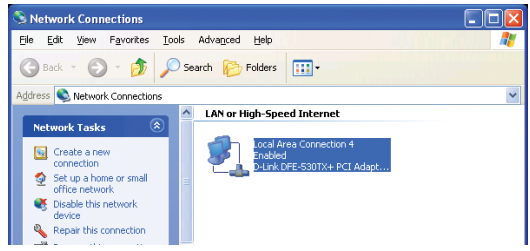
<http://support.dlink.com>

email: support@dlink.com

APPENDIX

To connect to the network, make sure the network adapter in your computer is configured properly. Here's how to configure the network adapter to obtain an IP address automatically for the DI-614+ Wireless Router.

For **Microsoft Windows XP**: Go to **Start > right click on My Network Places > select Properties > Double-click on the Network Connection** associated with the Ethernet adapter (i.e., D-Link DFE-530TX+).



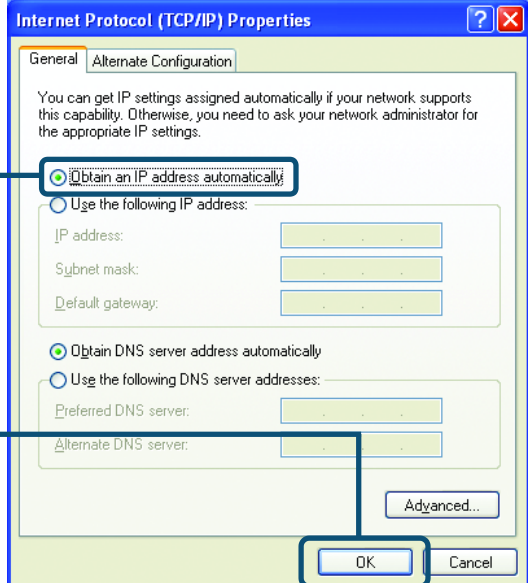
Click **Internet Protocol (TCP/IP)**

Click **Properties**

Select **Obtain an IP address automatically**

Click **OK**

Restart your computer, if required

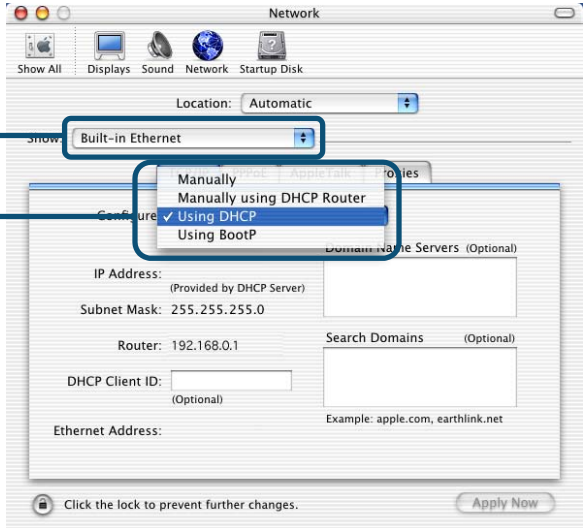


For **Apple Macintosh OS X**:
Go to the **Apple Menu**
and **Select System**
Preferences.

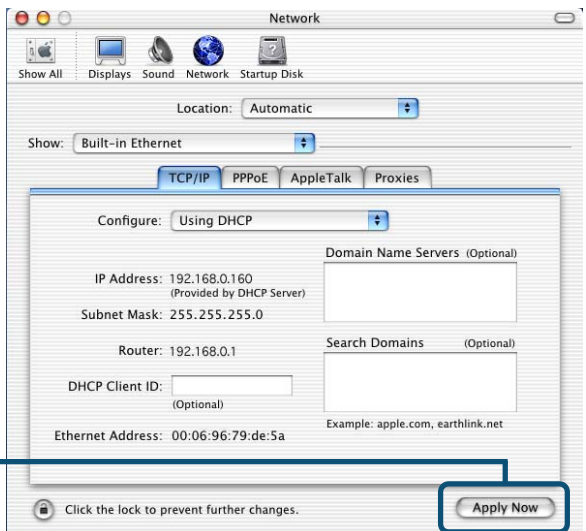
Click on
Network

Select **Built-in Ethernet** in the Show pull-down menu

Select **Using DHCP** in the Configure pull-down menu



Click on
Apply Now



The IP address information,
the Subnet Mask, the Router's
IP address and the Ethernet
adapter address will appear.