

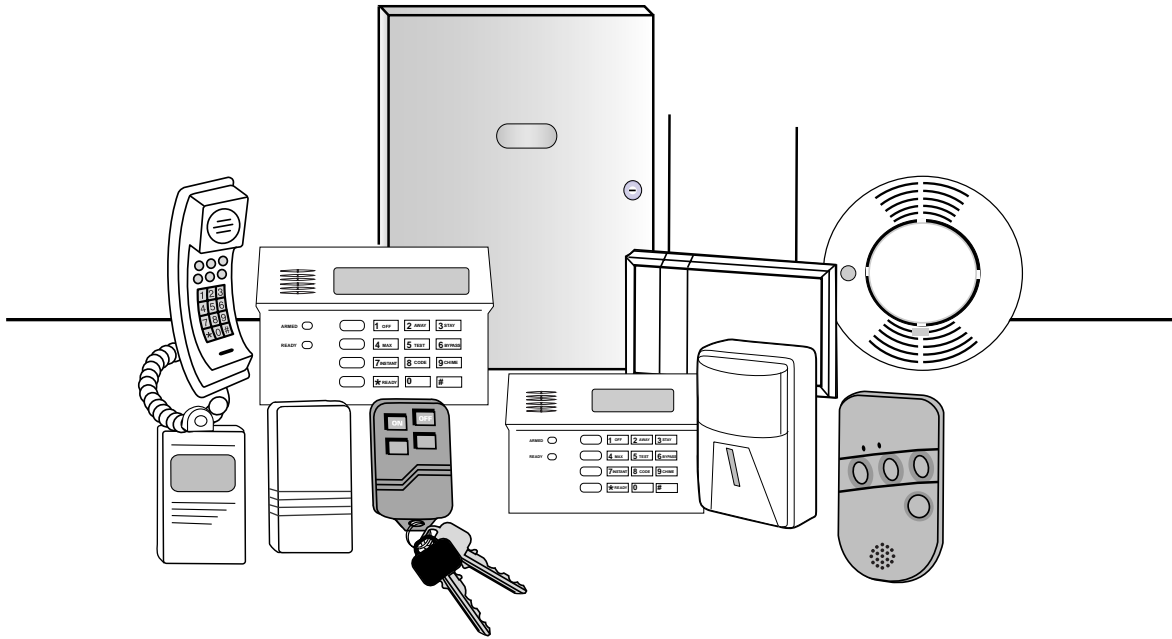
# ***SL150***

## ***Security System***

---

---

### ***User's Guide***





# TABLE OF CONTENTS

---

<b>System Overview</b> .....	5	<b>Arming All Protection (with Entry Delay)</b> .....	17
General Information .....	5	Using the <b>2 AWAY</b> Key.....	18
Zones .....	5	<b>Disarming and Silencing Alarms</b> .....	19
Burglary Protection .....	5	Using the <b>1 OFF</b> Key .....	19
Single-Button Arming Feature.....	6	To Disarm the System .....	19
Security Codes .....	6	To Silence Burglary Alarms.....	19
Fire Protection .....	6	Memory of Alarm.....	20
Paging Feature .....	7	<b>Bypassing Protection Zones</b> .....	20
Alarms.....	7	Using the <b>6 BYPASS</b> Key.....	21
Phone Access & Voice Response Capability .....	7	Quick Bypass .....	22
<b>Entry/Exit Delays</b> .....	8	Displaying Bypassed Zones.....	22
General Information .....	8	<b>Chime Mode</b> .....	23
Exit Alarms.....	9	Using the <b>9 CHIME</b> Key .....	23
<b>About the Keypads</b> .....	10	<b>Panic Keys</b> .....	24
General Information .....	10	Using Panic Keys .....	24
Two-Line Alpha Keypad.....	10	Types of Panic Alarms .....	24
Fixed-Word Keypad.....	10	<b>Macro Key</b> .....	25
Fixed-Word Keypad Displays .....	11	Using a Macro Key (C).....	25
<b>Functions of the Keypads</b> .....	13	Functions that you may want to program into the Macro key.....	25
<b>Checking for Open Zones</b> .....	13	<b>Using Device Commands</b> .....	25
Using the <b>★READY</b> Key.....	15	General Information.....	26
<b>Arming Perimeter (with Entry Delay)</b> .....	16	To Activate Devices.....	26
Using the <b>3 STAY</b> Key .....	16	To De-activate Devices .....	26
<b>Arming Perimeter (with or without Entry Delay)</b> .....	16		
Using the <b>7INSTANT</b> or <b>4 MAX</b> Key.....	17		

## **TABLE OF CONTENTS (cont'd)**

---

<b>Paging Feature</b> .....	27	<b>Recommendations</b>	
General Information .....	27	<b>for Proper Protection</b> .....	38
Code Format.....	27	Recommendations for	
Examples .....	27	Smoke and Heat Detectors .....	38
Single-Button Paging .....	27	Recommendations for Proper	
		Intrusion Protection.....	39
<b>Using the Keyswitch</b> .....	28	<b>Emergency Evacuation</b> .....	40
General .....	28	<b>Maintaining Your System</b> .....	41
Arming/Disarming .....	28	Taking Care of Your System .....	41
<b>Security Codes</b> .....	29	Replacing Batteries in	
General Information .....	29	Wireless Sensors .....	41
Babysitter Code .....	29	Silencing Low Battery Warning Tones ...	42
Duress Code.....	29	Routine Care .....	42
Quick Arming .....	30	<b>Quick Guide to System Functions</b> .....	43
To Add a User or Change a		<b>Summary of Audible Notifications</b> .....	44
User's Code .....	30	(Alpha Keypads	
To Change the Master Code .....	31	<b>Glossary</b> .....	45
To Delete a User.....	31	<b>Limitations Statement</b> .....	49
<b>Testing the System</b> .....	32	<b>Servicing Information</b> .....	50
Using the <b>5 TEST</b> Key.....	32	<b>Owner's Premium Credit Request Form</b> ..	51
<b>Trouble Conditions</b> .....	34	<b>Index</b> .....	53
Typical Check Displays.....	34	<b>Appendix –</b>	
<b>Fire Alarm System (if used)</b> .....	36	<b>Macro Key Programming &amp; Usage</b> .....	56
General Information .....	37	<b>Limited Warranty</b> .....	Back Cover
In Case of Fire .....	37		

# System Overview

---

## General Information

Congratulations on your ownership of a security system. You've made a wise decision in choosing this system because it represents the latest in security protection technology available today.

Your system offers you three forms of protection: burglary, fire, and emergency, and consists of at least one keypad, which provides control of system operation. The system includes various sensors that provide perimeter and interior burglary protection, plus smoke or combustion detectors designed to provide early warning in case of fire.

This system uses microcomputer technology to monitor all protection zones and system status, display appropriate information on the keypad(s) used with the system, and initiate appropriate alarms. Your system may also have been programmed to automatically send alarm or status messages over the phone lines to a central alarm monitoring station.

## Zones

Your system's sensing devices have been assigned to various "zones." For example, the sensing device on your entry/exit door may have been assigned to zone 01, sensing devices on windows in the master bedroom to zone 02, and so on. These numbers will appear on the display, along with a description for that zone (if programmed in 2-line Alpha display keypads), when an alarm or trouble condition occurs.

## Burglary Protection

Your system provides four modes of burglary protection: STAY, INSTANT, MAXIMUM and AWAY, and allows you to bypass selected zones while leaving the rest of the system armed. You must turn on (arm) the burglary protection portion of your system before it will sense burglary alarms.

The system also provides a CHIME mode, for alerting users to the opening of protected doors and windows *while the system is disarmed*. Refer to the other sections of this manual for information on how to use these features.

## ***System Overview (cont'd)***

---

The following table lists the three different arming modes and the features of each.

ARMING MODE	FEATURES OF EACH ARMING MODE			
	Exit Delay	Entry Delay	Perimeter Armed	Interior Armed
STAY	Yes	Yes	Yes	No
INSTANT	Yes	No	Yes	No
AWAY	Yes	Yes	Yes	Yes
MAXIMUM	Yes	No	Yes	Yes

### **Single-Button Arming Feature**

Keys A, B and C on all keypads have been programmed for single-button arming without the use of a security code,

**Key A**, when pressed for 2 seconds, will arm all protection (AWAY mode).

**Key B**, when pressed for 2 seconds, will arm the perimeter (STAY mode).

**\*Key C**, when pressed for 2 seconds, will arm the perimeter (INSTANT mode).

\* Unless programmed as a Macro (Speedkey).

### **Security Codes**

At the time of installation, you were assigned a personal four-digit security code, known only to you. You must enter the security code when arming and disarming the system, and when performing other system functions. As an additional safety feature, other users who do not need to know your code can be assigned different security codes. Refer to the ***Security Codes*** section for procedures on adding security codes to the system.

### **Fire Protection**

The fire protection portion of your security system (if used) is always active and will sound an alarm if a fire condition is detected. Refer to the ***Fire Alarm System*** section for important information concerning fire protection, smoke detectors, and planning emergency exit routes from the premises.

---

## System Overview (cont'd)

---

### Paging Feature

If the paging feature has been programmed for your system, up to two pagers will respond to certain conditions as they occur in your system. The pagers will display code numbers indicating the type of condition that has occurred. Refer to the **Paging Feature** section later in this manual for detailed information

Also available is **Single-Button Paging** on Alpha keypads. The “D” key may be used to signal a Pager. A fixed code is displayed on the pager when this key is pressed. This could mean “call home”, “call your office”, or whatever you decide this code will mean. A similar code (but not identical) is sent when the button on a wireless key fob is pressed. See the *Paging Feature* section.

### Alarms

When an alarm occurs, both the keypad and external sounders will sound, and the keypad will display the zone(s) causing the alarm. If your system is connected to a central monitoring station, an alarm message will also be sent. To stop the alarm sounding, simply disarm the system.

### Memory of Alarm

When an alarm condition occurs, the keypad displays the number(s) of the zone(s) that caused the problem, and displays the type of alarm (e.g., **FIRE, ALARM**). It remains displayed until it is cleared by disarming the system (see the **Disarming and Silencing Alarms** section).

### Phone Access & Voice Response Capability

Your system may include a voice module that permits you to access the system via a TouchTone phone, either on-premises or by call-in when away. The phone access feature will enable you to do the following:

- Receive synthesized voice messages over the telephone regarding the status of the security system.
- Arm and disarm the system and perform most function commands via the telephone, with voice confirmation provided after each command entry.

Complete information regarding the use of this feature is provided in a separate manual entitled *Phone Access User's Guide*, which accompanies the voice module.

# ***Entry/Exit Delays***

---

## **General Information**

This system has preset time delays, known as **exit delay** and **entry delay**. Whenever you arm your system, exit delay gives you time to leave through the designated exit door without setting off an alarm.

### **Exit delay**

This delay begins immediately after entering any arming command, and applies to all modes of arming protection. If it is programmed, a slow beeping will sound throughout the exit delay period; with fast beeps during the last 10 seconds.

### **Entry Delay**

This delay gives you time to disarm the system when you re-enter through the designated entrance door. But you must disarm the system before the entry delay period ends, or an alarm will occur. The keypad beeps during the entry delay period, reminding you to disarm the system. There are two entry delays (if programmed). The first is for your primary entrance and the second can be used for a secondary entrance, where a longer delay is required to give you enough time to walk to the keypad to disarm the system.

You can also arm the system with no entry delay at all by using the INSTANT (perimeter) or MAXIMUM (perimeter and interior) arming modes. The INSTANT mode is used when someone remains on premises, and will provide an immediate alarm if a door or window is opened, thus offering more security than the STAY mode, which has an entry delay. The MAXIMUM mode is used when no one is remaining on the premises, and will provide an immediate alarm if a door or window is opened or if there is any movement within the premises. The MAXIMUM mode should be used with care, particularly if there are pets on the premises. Failure to exercise caution when using this mode may lead to numerous false alarms.

See your installer for your delay times (you may want to record them below).

Exit delay:  seconds

Entry delay 1:  seconds

Entry delay 2:  seconds



## ***Entry/Exit Delays (cont'd)***

---

### **Exit Alarms**

To minimize false alarms sent to the alarm monitoring company, your system may have been programmed for this feature. Ask your installer if Exit Alarm is active for your system.

Exit Alarm Active

Whenever you arm the system, the exit delay begins. If an entry/exit door or interior zone is faulted when the exit delay ends (e.g., exit door left open), the system sounds an alarm and starts the entry delay timer. If you disarm the system before the entry delay ends, the alarm sound stops and the message **CANCELED ALARM** (Alpha keypads) or **CANCELED** (Fixed-word keypads) is displayed, along with a zone number indicating the faulted zone. No message is sent to the alarm monitoring company.

To clear the exit alarm condition, the open zone must be made intact (close window, door, etc.). To clear the display, enter your 4-digit security code plus OFF key.

If you do not disarm the system before the entry delay ends, and an entry/exit door or interior zone is still open, the alarm sound continues and an exit alarm message is sent to the alarm monitoring company. The message **EXIT ALARM** (Alpha keypads) or **EA** (fixed-word keypads) is displayed on the keypad, along with a zone number indicating the faulted zone. To stop the alarm, the system must be disarmed (by entering your 4-digit security code and pressing OFF). To clear the display, enter your security code plus OFF.

An exit alarm also results if an entry/exit door or interior zone is faulted within two minutes after the end of the exit delay.

## About the Keypads

---

### IMPORTANT

If the keypad beeps rapidly when you enter the premises, it means that an alarm has occurred during your absence and an intruder may still be on the premises. See "Important" note on page 19.

**LEAVE IMMEDIATELY AND CONTACT THE POLICE** from a nearby safe location.

### General Information

Your keypads allow you to control all system functions. The keypads feature a telephone-style (digital) keypad and a Liquid Crystal Display (LCD) that shows the nature and location of all occurrences.

The keypads contain a built-in sounder that will sound during alarms and troubles. The keypads also "beep" during certain system functions, such as during entry/exit delay times, in **CHIME** mode, and when you depress any of the keys (to acknowledge the key press). Both types of keypads have a swing-down door for access to the keys. When in the closed position, the ARMED and READY LEDs are still visible, as is the display window.

There are two basic types of keypads: the **Alpha** keypad and the **Fixed-word** keypad (both described below).

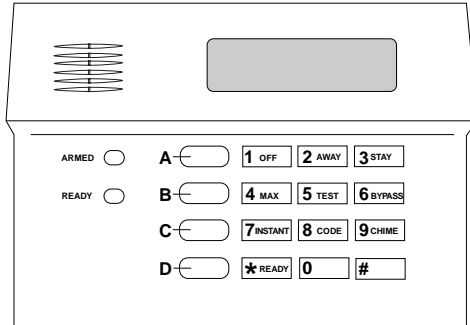
### Two-line Alpha Keypad

Alpha keypads feature a 2-line, 32-character alphanumeric LCD that displays system messages and instructions. The Alpha keypad supported by this system is shown on a following page. This keypad can be programmed with custom zone descriptions. **The screen displays depicted in this manual are those that typically appear on this 2-line Alpha keypad.**

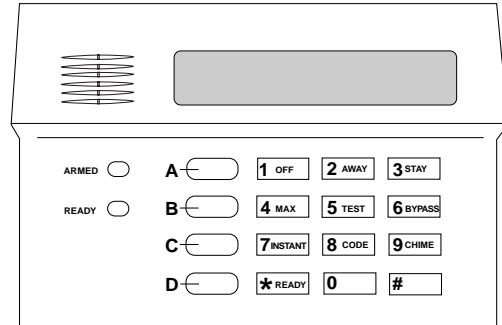
### Fixed-Word Keypad

Fixed-word keypads are functionally identical to Alpha keypads, but the LCD display uses pre-designated words to identify the nature and location of occurrences. The meaning of the various pre-designated words will be found starting on the next page. The fixed-word keypad supported by this system is also shown there.

## About the Keypads (cont'd)



**FIXED-WORD KEYPAD**



**ALPHA KEYPAD**

KEYPADS SHOWN  
WITH DOOR OPEN



**Fixed-Word Keypad Display**  
(showing all pre-designated  
words that can be displayed)

### **What the Fixed-Word Displays mean:**

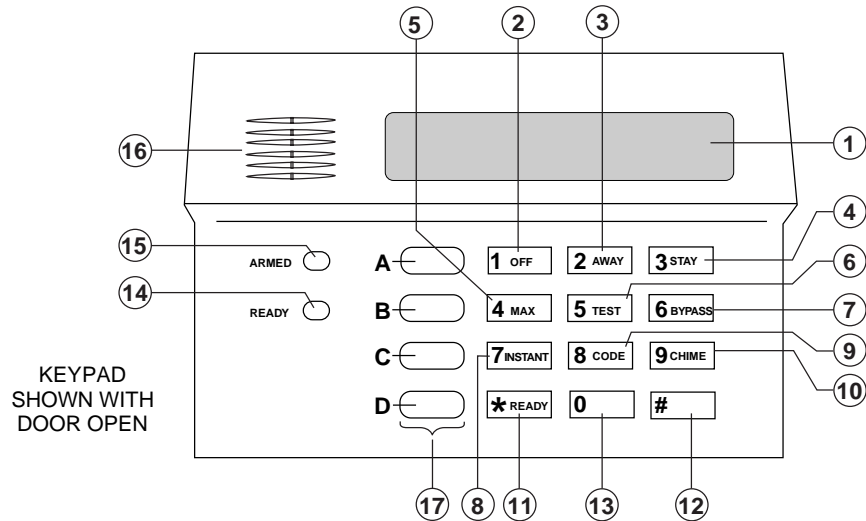
- AWAY:** All burglary zones, interior and perimeter, are protected.
- STAY:** Perimeter burglary zones such as protected windows and doors, are protected.
- INSTANT:** Perimeter burglary zones are protected and Entry Delay is turned off.
- BYPASS:** One or more burglary protection zones have been bypassed.

## ***About the Keypads (cont'd)***

---

- NOT READY:** The burglary portion of the system is not ready for arming (due to open protection zones).
- READY:** The burglary system is ready to be armed.
- NO AC:** AC power has been cut off. System is operating on backup battery power.
- AC:** AC power is present.
- CHIME:** The Chime feature is activated.
- BAT:** There is a low-battery condition in a wireless sensor (if zone number is displayed) or a low system battery (if no zone number is displayed).
- ALARM:** An intrusion has been detected and the system is armed (also appears during a fire alarm or audible emergency alarm). The protection zone in alarm is also displayed.
- FIRE:** A fire alarm is present. The zone in alarm is also displayed.
- CHECK:** A malfunction has been discovered in the system or an open has been detected in a Fire zone. The zone number in trouble is also displayed.
- CANCELED:** Appears when an alarm occurs and the system is disarmed before the monitoring station has been notified.

## Functions of the Keypads



- 1. DISPLAY WINDOW:** Fixed-word and 2-line Alpha Displays use Liquid Crystal Displays (LCDs) to display protection point identification and system status. 2-Line Alpha keypads also display messages and user instructions.
- 1 OFF KEY:** Disarms the burglary portion of the system, silences alarms and audible trouble indicators, and clears visual alarm displays on the keypad after the problem has been corrected.
- 2 AWAY KEY:** Completely arms both perimeter and interior burglary zones for backup protection by sensing an intruder's movements through protected interior areas. Also guards protected doors, windows, etc. Entrance can be made through an entry delay zone without causing an alarm if the system is disarmed before the entry delay time expires.
- 3 STAY KEY:** Arms the perimeter burglary sensors, guarding protected doors, windows, and other perimeter protection points, and sounds an alarm if one is opened. Interior protection is not armed, which allows movement within your house without causing an alarm. Entrance can be made through an entry delay zone without causing an alarm if the system is disarmed before the entry delay time expires.

## Functions of the Keypads (cont'd)

---

5. **4 MAX** **KEY:** Completely arms both perimeter and interior burglary zones for full protection. Entrance to the premises or any movement within the premises will cause an immediate alarm. Use this arming mode with caution.
6. **5 TEST** **KEY:** Used to place the system in the Test mode, which allows testing of the system and the alarm sounder.
7. **6 BYPASS** **KEY:** Removes individual protection zones from being monitored by the system. The keypad displays currently bypassed protection zones.
8. **7 INSTANT** **KEY:** Arms in a manner similar to STAY mode, but turns off the entry delay period, offering greater security while you are inside and not expecting any late visitors. An alarm will occur immediately upon opening any perimeter protection point, including entry delay zones.
9. **8 CODE** **KEY:** Allows the entry of additional user codes that can be given to other users of the system.
10. **9 CHIME** **KEY:** Turns the CHIME mode on and off. When it is on, any entry through a protected zone while the system is disarmed will cause beeping sounds at the keypad(s) to alert the occupants.
11. **★ READY** **KEY:** When this key is depressed prior to arming the system, the keypad will display any open protection zones.
12. **#** **KEY:** Permits arming of the system without entering a security code ("Quick Arm," if programmed).
13. **KEYS 0-9:** Used to enter your individual security access code(s).
14. **READY INDICATOR:** The system is ready to be armed if this indicator is lit. An unlit indicator means the system is not ready (a zone is open).
15. **ARMED INDICATOR: (RED)** Lit when the system has been armed in the STAY, AWAY, or INSTANT mode.
16. **INTERNAL SOUNDER:** Source of audible internal warning and confirmation sounds, as well as alarms (see the *Summary of Audible Notifications* section).
17. **A-B-C-D KEYS:** These keys are function keys that perform specific system functions.

Key	Function
A	Arm AWAY (no code required)
B	Arm STAY (no code required)
C *	Arm INSTANT (no code required)
D	Can be used for single-button paging

\* Unless programmed for macros (speedkey)

---

## Checking for Open Zones

---

### Using the ★ READY Key

Before arming your system, all protected doors, windows, and other protection zones must be closed or bypassed (see *Bypassing Protection Zones* section). Otherwise the keypad will display a NOT READY message. Pressing the [★] key will display all zones that are faulted, making it easier for you to secure any open zones.

**Note:** A SYSTEM READY display will appear and the green READY indicator on the keypad will be lit if the system is ready to be armed. If this does not occur, the system is not ready.

1. NOT READY - press ★  
to show faults **If this display appears,** press the ★READY key to show faulted zones.  
There is no need to enter your security code in order to reveal faulted zones.
  
2. FAULT 05 FRONT  
UPSTAIRS BEDROOM **Secure faulted zones.**  
Typical fault display shows open zone(s). Secure or bypass the zone(s) displayed before arming the system.
  
3. \*\*\*SYSTEM READY\*\*\* **The system can be armed.**  
The SYSTEM READY message is displayed when all protection zones have been either closed or bypassed.  
  
You may now arm the system as described on the following pages.

# Arming Perimeter Only (with Entry Delay on)

---

## Using the 3 STAY Key

Use this key when you are staying home, but expect someone to use the entrance door later.

When armed in STAY mode, the system will sound an alarm if a protected door or window is opened, but you may otherwise move freely throughout the premises. Late visitors can enter through the entrance door without causing an alarm, but the system must be disarmed within the entry delay period or an alarm will occur.

**Close all protected perimeter windows and doors before arming** (see the *Checking for Open Zones* section). A SYSTEM READY display will appear and the green READY indicator on the keypad will be lit if the system is ready to be armed. If this does not occur, the system is not ready.

1.     +  3 STAY  **Enter 4-digit security code, then press the STAY key.**  
(Security Code) Example: Press  7  2  9  6, then  3 STAY  if

*or, for Quick Arming:*

**Simply press the [B] key (this key is programmed for STAY arming) for 2 seconds.**

2.  ARMED \*STAY\*  **Listen for 3 beeps.** The keypad beeps three times and displays the ARMED STAY message. The red ARMED indicator also lights.

ARMED \*STAY\*  
You may exit now  The **You may exit now** portion of the message disappears when the exit delay time expires.

**Note:** If programmed for your system, you can restart the exit delay at any time after arming in INSTANT mode by pressing the  \*READY  key. This is useful if you wish to open the entry/exit door to let someone in or out after arming the system without having to disarm the system and then re-arm it again.

Place a check in the box at the left if your installer has programmed this feature in your system.



# Arming Perimeter Only

(with Entry Delay off)

---

## Using the 7 INSTANT Key

Use this key when you are staying home, but would like increased security by arming pre-selected interior zones.

When armed in INSTANT mode, the system will sound an alarm immediately if a protected window or door is opened, but you may otherwise move freely throughout the premises. Anyone entering through the entrance door will cause an immediate alarm.

**Close all protected perimeter windows and doors before arming** (see *Check for Open Zones* section).

A SYSTEM READY display should be present and the green READY indicator on the keypad should be lit if the system is ready to be armed.

1.     +  7 INSTANT  
(Security Code)

**Enter 4-digit security code, then press the INSTANT key.** *Example:*

Press  7  2  9  6, then  7 INSTANT

\* This key cannot be used if programmed as a Macro Speedkey)

*or, for Quick Arming:*

2.  STAY \*INSTANT\*  
You may exit now

**If available, simply press the [C] key\* for 2 seconds (this key is programmed for STAY INSTANT arming.**

**Listen for 3 beeps.** The keypad beeps three times and displays the INSTANT message. The **You may exit now** portion of the message disappears when the exit delay time expires.

**Note:** If programmed for your system, you can restart the exit delay at any time after arming in INSTANT mode by pressing the  \*READY key. This is useful if you wish to open the entry/exit door to let someone in or out after arming the system without having to disarm the system and then re-arm it again.

Place a check in the box at the left if your installer has programmed this feature in your system.

# Arming Perimeter Only

(with Entry Delay on or Entry Delay off)

---

## Using the or Key

When no one will be staying on the premises, you can arm the system AWAY or MAX (Maximum).

**AWAY Mode** After arming AWAY, you may leave through the entrance door during the exit delay period without causing an alarm. The system will sound an alarm (after the entry delay period) if a protected perimeter door or window is opened, or if any movement is detected inside the premises. You may re-enter through the entrance door, but must disarm the system within the entry delay period or else an alarm will occur.

**MAX Mode** After arming MAX, you may leave through the entrance door during the exit delay period without sounding an alarm. The system will sound an **immediate** alarm (there is no entry delay period) if anyone enters or if any movement is detected inside the premises. When you re-enter, an immediate alarm will sound since there is no entry delay. Keep this in mind when using this mode.

**To Arm the System** **Close all protected perimeter windows and doors before arming** (see **Checking for Open Zones** section). A SYSTEM READY display will appear and the green READY indicator on the keypad will be lit if the system is ready to be armed. If this does not occur, the system is not ready.

- +   
(Security Code)                      or                        
Example: Press , then   
or

*for Quick Arming  
AWAY*

**If available, simply press the [A] key for 2 seconds (this key is programmed for AWAY arming)**

- |                                    |
|------------------------------------|
| ARMED **AWAY**<br>You may exit now |
|------------------------------------|

Or

ARMED** MAXIMUM** You may exit now
---------------------------------------

**Listen.** The keypad beeps twice, or beeps continuously if Exit Warning has been programmed for your system, and displays the ARMED AWAY or ARMED MAXIMUM message. The red ARMED indicator also lights. The **You may exit now** portion of the message disappears when the exit delay time expires.

---

## Disarming and Silencing Alarms

---

### Using the 1 OFF Key

Use the **OFF** key to disarm the system and to silence alarm and trouble sounds. See **Summary of Audible Notification** section for information to help you distinguish between fire and burglary alarm sounds.

**IMPORTANT:** If you return and the main burglary sounder is on, **DO NOT** enter the premises, but call the police from a nearby safe location. If you return after an alarm has occurred and the main sounder has shut itself off, the keypad will beep rapidly when you enter, indicating that an alarm has occurred during your absence and an intruder may still be on the premises. **LEAVE IMMEDIATELY** and **CONTACT THE POLICE** from a nearby safe location.

### To Disarm the System

This disarming method may be used at **any** time, including exit time delay.

- +  1 OFF  
(Security Code)      **Enter 4-digit security code, then press the OFF key.**  
Example: Press  7  2  9  6 then  1 OFF
- \*\*\*SYSTEM READY\*\*\*      **Listen for 1 beep.**  
The keypad displays the SYSTEM READY message and beeps once to confirm that the system is disarmed.

### To Silence Burglary Alarms

- +  1 OFF  
(Security Code)      **Enter 4-digit security code.**  
Example: Press  7  2  9  6 +  1 OFF

## ***Disarming and Silencing Alarms (cont'd)***

---

**To clear the display after silencing an alarm:**

2. 

ALARM 03 BACK DOOR
-----------------------

**Listen for 1 beep.**

The keypad displays the alarm memory.

**Enter 4-digit security code, then press the OFF key.**

Example: Press 

7
---

2
---

9
---

6
---

 then 

1 OFF
-------

3. 

***SYSTEM READY***
--------------------

**Listen for 1 beep.**

The keypad displays the SYSTEM message and beeps once to confirm that the system is disarmed.

### **Memory of Alarm**

If an alarm occurs, the keypad displays the zone number(s) that caused the alarm and the type of alarm. These messages remain displayed until cleared by a user.

**To clear the display:**

Note the zone number displayed and enter an OFF sequence.

--	--	--	--

 + 

1 OFF
-------

 \*  
(Security Code)

**Enter 4-digit security code, then press the OFF key.\***

Example: Press 

7
---

2
---

9
---

6
---

 then 

1 OFF
-------

 \*

If the SYSTEM READY message will not display, go to the displayed zone and correct the fault (close windows, etc.). If the fault cannot be corrected, notify your alarm company.

\* In cases of an alarm, trouble, or **CHECK** message, the 4-digit security code and OFF key must be entered into the system **two times** to clear the display.

---

## Bypassing Protection Zones

---

### Using the BYPASS Key

This key is used when you want to arm your system with one or more zones intentionally unprotected. Bypassed zones are unprotected and will not cause an alarm when violated while your system is armed. **All bypasses are removed when an OFF sequence (security code plus OFF) is performed.** Bypasses are also removed if the arming procedure that follows the bypass command is not successful.

*The system will not allow fire zones to be bypassed.*

**To bypass zones, the system must be disarmed first.**

1.  + BYPASS **Enter 4-digit security code, then press the BYPASS key.**  
(Security Code)

Example: Press  then BYPASS

2.   
(Zone Numbers)

**Enter zone numbers.**

Enter the zone number(s) for the zones to be bypassed (e.g., 01, 02, 03, etc.).

**Important!** All single-digit numbers must be preceded by a zero (for example, enter 01 for zone 1).

3.   
  
Typical bypass message

**Wait.**

The keypad displays the word **BYPASS** along with each bypassed zone number (and a zone descriptor if programmed). Wait for these zones to be displayed, to be sure that intended zones are bypassed.

4.

**Arm as usual.**

Arm the system as usual when the keypad displays the SYSTEM READY message.

## Bypassing Protection Zones (cont'd)

---

### Quick Bypass

Your system may allow you to easily bypass all open (faulted) zones without having to enter zone numbers individually. Ask your installer if this feature is active.

1.     +  **BYPASS**  
(Security Code)

**Enter 4-digit security code, then press the BYPASS key.**

Example: Press     then  **BYPASS**

2. 

BYPASS 07 FRONT UPSTAIRS BEDROOM
-------------------------------------

  
Typical bypass message

**Wait.**

In a few moments, all open zones are displayed along with the word **BYPASS**. Wait for these zones to be displayed before arming. Arming the system before zones are displayed eliminates all bypasses.

3. 

*ZONE BYPASSED* SYSTEM READY
---------------------------------

**Arm as usual.**

Arm the system as usual when the keypad displays the SYSTEM READY message.

### Displaying Bypassed Zones

For determining which zones have been bypassed, all bypassed zones can be displayed only when the system is disarmed, and when the **BYPASS** message shown in step 3 above is displayed.

1.     +  **BYPASS**  
(Security Code)

**Enter 4-digit security code, then press the BYPASS key.**

Example: Press     then  **BYPASS**

2. 

BYPASS 07 FRONT UPSTAIRS BEDROOM
-------------------------------------

  
Typical bypass message

**Wait.**

In a few moments, all open zones are sequentially displayed along with the word **BYPASS**.

## Chime Mode

---

### Using the CHIME Key

Your system can be set to alert you to the opening of a door or window<sup>†</sup> when the system is disarmed by using the CHIME mode. When activated, three beeps sound at the keypad whenever a protected perimeter door or window is opened.

<sup>†</sup> Or selected doors or windows if chime-by-zone feature is active. Ask installer if this feature applies to your system.

Pressing the  key will display the open protection points.

Note that the CHIME mode can be activated only when the system is disarmed.

#### To turn CHIME mode on:

1     +  CHIME  
(Security Code)

**Enter 4-digit security code, then press the CHIME key.**

Example: Press     then  CHIME

2   
SYSTEM READY

**View.**

The word **CHIME** appears on the display. The system is still disarmed as shown.

#### To turn CHIME mode off:

1     +  CHIME  
(Security Code)

**Enter 4-digit security code, then press the CHIME key.**

Example: Press     then  CHIME

2

**View.**

The **CHIME** word disappears from the display. The system remains disarmed as shown.

## **Panic Keys**

**(For Manually Activating Silent and/or Audible Alarms)**

---

### **Using Panic Keys**

Your installer may have programmed your system to use special key pairs to manually activate panic functions. The functions that might be programmed are listed below. Ask your installer what function(s) are, or should be, programmed for your system.

#### **ACTIVE PANIC FUNCTIONS**

<b>KEYS</b>	<b>ZONE DISPLAYED</b>	<b>FUNCTION PERFORMED BY KEY PAIR</b>
1 and ★	95	
3 and #	96	
★ and #	99	

To use a paired-key panic alarm, simply press both keys of the assigned pair at the same time.

### **Types of Panic Alarms**

**A silent emergency** sends an alarm signal to the alarm monitoring company<sup>†</sup>, but there are no audible alarms or visual displays.

**An audible emergency** sends an emergency message to the alarm monitoring company<sup>†</sup> and sounds a loud, steady alarm at your keypad and at any external sounders that are connected. (**ALARM** plus a zone number are also displayed).

**A personal emergency** alarm sends an emergency message to the alarm monitoring company<sup>†</sup> and sounds at keypads, but not at external sounders (**ALARM** plus a zone number are also displayed).

**A fire alarm** sends a fire alarm message to the alarm monitoring company<sup>†</sup> and uniquely activates keypad and external sounders (**FIRE** plus a zone number are also displayed).

<sup>†</sup> *If your system is connected to an alarm monitoring company*



### Using a Macro Key

The “C” key can be used to activate a series of commands of up to 16 keystrokes. These keystrokes, as a group, are called macros and are stored in the system's memory. The “C” key must be initially programmed as a “macro” key (see the *Security Codes* section under “To Add or Change a User’s Code” for the necessary procedure). This will then enable you to program various functions into this key.

Typical macro functions include:

- Arming sequences that first involve bypassing certain zones before arming
- Frequently used command sequences
- Relay activation sequences.

### Functions that may want to program into the “C” key:

Over time you will realize that at certain times of the day you arm or disarm your security system in certain ways. For example, each night before going to bed, you turn off certain lights and arm the security system, leaving interior areas bypassed so that normal movement at night will not set off an alarm.

In this example, you would program your “C” key to:

1. Turn off those certain lights and
2. Arm your security system in the STAY mode

Every night, all you (or another user whom you may have assigned) would have to do is press the “C” key on your keypad, wait for the ENTER USER CODE prompt on the display, and then enter your 4-digit user code. The macro sequence of commands that was programmed will now begin automatically.

For complete information on the programming and use of the macro (C) key, refer to the *Appendix* at the end of this manual.

## Using Device Commands

---

### General Information

Your system may be set up so that certain lights or other devices can be turned on or off by using the device command from the keypad. Ask your installer if this has been done in your system. If programmed for your system, some devices may activate automatically upon certain system conditions. In this case, the following commands can be used to override the device activation. Ask your installer for a full explanation of this feature.

### To Activate Devices

**Enter security code, then press # + 7 + device number.**

+ #  + 7INSTANT +   
(Security Code) (Device Number)

*Example:* Press 7 2 9 6 then press # , then press 7INSTANT, then enter the number representing the device you wish to activate. Ask your installer for the device numbers assigned for your system.

### To Deactivate Devices

**Enter security code, then press # + 8 + device number.**

+ #  + 8 CODE +   
(Security Code) (Device Number)

*Example:* Press 7 2 9 6 then press # , then press 8 CODE, then enter the number representing the device you wish to deactivate. Ask your installer for the device numbers assigned for your system.

Device #	Description	Device #	Description
1		5	
2		6	
3		7	
4		8	

---

## Paging Features

---

### General Information

If the Paging feature has been programmed for your system, up to two separate pagers will automatically respond to certain conditions as they occur in your system. This message appears in a 7-digit format explained below. Up to 16 additional digits may be sent that may consist of PIN numbers, messages, reminders, etc. These 16 digits are programmed by your installer and will appear *before* the standard 7-digit message.

### Code Format

The 7-digit code that follows takes the following form: **SSS-00EE**

SSS = 3-digit event code: 911 = Alarm      101 = Opening (disarm)  
811 = Trouble      102 = Closing (armed)

00EE = The first 2 digits will always be 00. They are followed by the 2-digit user number or zone number, depending on the event code.

**Examples** Examples of typical pager displays follow. Not included in the examples below are the optional 16 digits (preceding the 7-digit status code) that may have been programmed by the installer for additional data.

*Example 1.* Pager displays: **911-0004** = System is reporting an alarm (911) caused by a fault on zone 4 (0004).

*Example 2.* Pager displays: **102-0005** = System is reporting a closing-system arming (102) by user 5 (0005).

**Alarm** and **trouble** codes are always followed by the zone numbers in which they occur.

**Single Button Paging**  
(from a wired keypad or wireless key fob)

Single-button paging, using the “D” key (if present) on your keypad, is also possible. When pressed, the “D” key sends a special message to a pager and displays **Pager in progress** on the keypad for 30 seconds. The message it sends is coded as 999-9999 and signifies ANY message the user and recipient have decided upon beforehand, such as “return to office”, “call home”, etc.

Paging is also possible from a **single-button key fob**. However, the message it sends to the pager is coded as 999-9998.

If necessary, ask your installer if these features are present in your system.

## Using the Keyswitch

---

### General

Your system may be equipped with a keyswitch for use when arming and disarming. A red and green light on the keyswitch plate indicate the status of your system as follows:

**Green Light:** This indicator lights when the system is **disarmed and ready** to be armed (no open zones). If the system is disarmed and the green light is off, it indicates the system is not ready (one or more zones are open).

**Red Light:** This indicator lights when the system is armed or a memory of alarm exists.

*Lit Steady:* System is **armed in AWAY** mode.

*Slow Flashing:* System is **armed in STAY** mode.

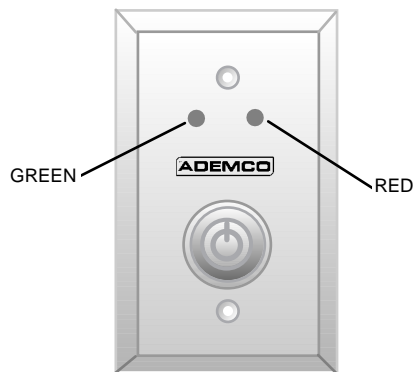
*Rapid Flashing:* Memory of alarm, indicating an alarm has occurred.

### Arming/Disarming

**To arm in the AWAY mode,** turn the key to the right for 1/2 second and release. The keypad will beep twice and the red light will stay on steady.

**To arm in the STAY mode,** turn the key to the right and hold for longer than 1 second, then release. The keypad will beep three times and the red light will flash slowly.

**To disarm the system,** turn the key to the right and release. If an alarm has occurred, the red light will be flashing rapidly (memory of alarm).



# Security Codes

---

## General Information

As an additional safety feature, other users who do not need to know your code can be assigned different security codes. These secondary users are identified by "user numbers," which you select when you assign a user's security code. You can assign up to 14 additional user codes (user numbers 03-16), including the babysitter and Duress codes. Note that the master (primary) user of the system is the only one who can assign codes to secondary users. The master (or primary user of the system) is user number 02; user number 01 is reserved for the installer of the system.

All codes can be used interchangeably when performing system functions (a system armed with one user's code can be disarmed by another user's code), except the special codes, described below.

## Babysitter Code

This code can be used to arm the system, but cannot disarm the system unless the system was armed with this code. It is typically assigned to someone (such as a babysitter) who needs to arm/disarm the system only at certain times. The babysitter code is assigned to user 15. The user of this code should **not** use the Quick Arming feature described later.

## Duress Code

This feature is intended for use when you are forced to disarm or arm the system under threat. When used, the system will operate normally, but can silently notify the alarm monitoring company of your situation, if that service has been provided. The Duress code is assigned to user 16. Ask your installer if this has been programmed in your system. If so, place a check in the box to the left.

**Important:** This code is useful only when the system is connected to an alarm monitoring company.

If Duress code is programmed in your system, enter a check in box at left.

## Security Codes (cont'd)

---

### Single-Button Arming

You can arm the system without the need to enter a security code by pressing a single key on the keypad, as follows:

Pressing the “A” key arms the system AWAY

Pressing the “B” key arms the system STAY

Pressing the “C” key\* arms the system INSTANT

\* Provided the “C” key is not programmed as a “Macro” key.

**Note:** The security code must always be used to disarm the system.

### To Add a User or Change a User's Code

You must make sequential key depressions for all steps in a procedure within 2 seconds of one another (e.g., perform steps 1, 2, and 3 below with no delay between steps), or else the entire entry is aborted and must be repeated from its beginning.

1.     +   
(Master Code)

**Enter 4-digit Master code, then press the  key.**

Example: Press     then

2.    
(User Number)

**Enter the 2-digit user number (03–16) for the user you are adding or changing.**

3.      
(User's Code)

**Enter the new 4-digit security code for that user. The following prompt will appear, accompanied by three beeps.**

4. 

Execute Macros? 0 = Exit 1 or 2
------------------------------------

**Note:** If you are using a fixed-word keypad, this display will not be present, but the three beeps will be heard.

Enter “0” if you are **not** going to program the “C” key for a macro function, or you do not want this user to have the ability to use the macro key. If you **do** intend to use the “C” key for this purpose, enter “1” or “2.” This enables the “C” key for macro programming later (see *Appendix* for macro use and programming information).

---

## Security Codes (cont'd)

---

### To Change the Master Code

Follow the procedure for changing a user's code, but enter user 02. Additionally, when changing the Master code you will be prompted to enter the Master code a second time to confirm accuracy.

1.     +  **Enter 4-digit Master code, then press the  key.**  
(Master Code) Example: Press     then
2.   **Enter user number "02."**  
(User Number) Enter the 2-digit user number (03-16) for the user you are adding or changing.
3.     **Enter new Master code.**  
(New Master Code) Enter the new Master security code.
4.     **Enter the new Master code above again.**  
(Repeat New Master Code)

### To Delete a User

1.     +  **Enter 4-digit Master code, then press the  key.**  
(Master Code) Example: Press     then
2.   **Enter user number.**  
(User Number) Enter the 2-digit user number (03-16) for the user whose code you are deleting.
3. ----- **Stop.**  
Wait (about 3 seconds) until the keypad beeps once before pressing any other key. The code is automatically deleted.

## Testing the System (To be conducted weekly)

---

### Using the TEST Key

The TEST key puts your system into a TEST mode, which allows each protection point to be checked for proper operation. The keypad sounds a single beep every 40 seconds as a reminder that the system is in this TEST mode.

**Note:** An alarm message will not be sent to your alarm monitoring company during the following tests.

1.  **Disarm the system.**  
Disarm the system and close all protected windows, doors, etc. The SYSTEM READY message should be displayed and the green READY indicator should also be lit.
2.     +  TEST **Enter 4-digit security code, then press the TEST key.**  
(Security Code)  
Example: Press     then  TEST
3. **Listen.**  
The external sounder should sound for 2 seconds and then turn off. If the sounder does not sound, **CALL FOR SERVICE AT ONCE.**
4. **Fault zones.**  
Open each protected door and window in turn and listen for three beeps from the keypad. Identification of each faulted protection point should appear on the display. The display will clear when the door or window is closed.  
Walk in front of any interior motion detectors (if used) and listen for three beeps. The keypad should display the identification of the activated detector.



---

## Testing the System (cont'd)

---

The display will clear when no motion is detected. Note that if you are using wireless motion detectors, there is a 3-minute delay between activations. This is to conserve battery life.

To test all smoke detectors, follow the manufacturer's instructions. The keypad should display the identification of each detector when each is activated.

If you experience a problem with any protection point (no confirming sounds, no display), **CALL FOR SERVICE IMMEDIATELY.**

When you have checked (and closed, where necessary) all protection points, no zone identification numbers should be displayed on the keypad.

When you complete testing, exit the TEST mode by continuing with step 5.

5.     +  OFF  
(Security Code)

**Exit TEST mode.**

Enter your security code and press the OFF key.

If you inadvertently leave the test mode active, it automatically turns off after approximately 4 hours.

# Trouble Conditions

---

## Typical Check Displays

The word **CHECK** on the keypad's display, accompanied by a rapid beeping at the keypad, indicates a trouble condition in the system. The displays in parentheses in the left column below may appear on non-Alpha keypads when the associated trouble condition is present.

**To silence the beeping sound** for "CHECK" conditions, press any key.

**CHECK + Zone**  
number or Descriptors

\*Note: A display of **Zone 9** represents a problem with the wireless receiver or other system devices, which are not user-serviceable. **CALL FOR SERVICE IMMEDIATELY**

Indicates that a problem exists with those zone(s).\* First, determine why the zone(s) displayed are faulted (open window or door; open or shorted zone terminals; etc.) and correct the problem. If the zone(s) contain a wireless detector, check that changes in the room (moving furniture, televisions, etc.) are not blocking wireless signals to/from the detector.

If the problem has been corrected, the zone descriptor(s) and CHECK should disappear.

To clear the display if not corrected, key an OFF sequence (enter the 4-digit security code, then press the OFF key).

A **CHECK** condition can also indicate a wiring problem (opens or shorts, for instance). If the **CHECK** display persists, **CALL FOR SERVICE IMMEDIATELY**.

Note that the system will not allow arming if a **CHECK** condition exists. To arm the system with a **CHECK** condition present, you must first bypass the zone(s) having the **CHECK** condition.

---

## ***Trouble Conditions (cont'd)***

---

**Telco Fault**  
(or **CHECK** and  
zone **94**)

If the telephone line monitor feature has been programmed for your system, this display indicates that the telephone line has been disconnected or cut. In some systems, this display is accompanied by a trouble sound from the keypad and an external sounder. **CONTACT YOUR SERVICE COMPANY IMMEDIATELY.**

To silence the trouble sound, enter your security code plus OFF.

**COMM. FAILURE**  
(or **FC**)

Indicates that a failure has occurred in the telephone communication portion of your system. **CALL FOR SERVICE IMMEDIATELY.**

**SYSTEM LO BAT**  
(or **BAT** with no zone  
No.)

Indicates that a low system battery condition exists, and is accompanied by a once-per-minute beeping\* at the keypad. **CALL FOR SERVICE AT ONCE.**

\*You can stop the beeping that accompanies a low battery display by entering an OFF sequence (security code + OFF).

**LO BAT + zone**  
descriptor (or **BAT**  
with zone No.)

Indicates that a low-battery condition exists in the wireless transmitter\*\* displayed, and is accompanied by a once-per-minute beeping at the keypad. **CALL FOR SERVICE IMMEDIATELY.**

\*\* Not all systems use wireless transmitters.

**MODEM COMM**  
(or **CC**)

Indicates that the control is on-line with the central station's remote computer. The control will not operate while on-line. Wait a few minutes. The display should disappear.

## ***Trouble Conditions (cont'd)***

---

<b>POWER</b> indicator (if present) is off. <b>AC LOSS</b> is displayed.	The system is operating on battery power only. If only some lights are out on the premises, check circuit breakers and fuses and reset or replace as necessary. <b>CALL FOR SERVICE</b> if AC power cannot be restored to the system.
<b>Busy-Standby</b> (or <b>dI</b> )	If this remains displayed for more than 1 minute, system is disabled. <b>CALL SERVICE AT ONCE.</b>
<b>OPEN CIRCUIT</b> (or <b>OC</b> )	The keypad is not receiving signals from the control. <b>CALL SERVICE AT ONCE.</b>
<b>Long Rng Trbl</b> (or <b>bF</b> )	If programmed, backup Long Range Radio communication has failed. <b>CALL SERVICE AT ONCE.</b>
<b>Bell failure</b> (or <b>CHECK 70</b> )	Bell/Siren supervision failure. <b>CALL SERVICE AT ONCE.</b>
<b>RF Jam</b> (or <b>Check 90</b> )	If enabled and a Receiver Jam is detected, a report will be sent to the monitoring station and at the same time a <b>Rcvr Jam</b> message will toggle with the present display on the Alpha keypad. When the jam condition is cleared, a Restore message is sent to the monitoring station. To clear the keypad display, enter your 4-digit code and press the OFF key.

### **In The Event Of Telephone Operational Problems**

In the event of telephone operational problems, disconnect the control by removing the plug from the RJ31X (CA38A in Canada) telephone wall jack. We recommend that your certified installer demonstrate disconnecting the phones on installation of the system. Do not disconnect the phone connection inside the control/communicator. Doing so will result in the loss of your phone lines. If the regular phone works correctly after the control/communicator has been disconnected from the phone lines, the control/communicator has a problem and should be returned for repair. If, upon disconnection of the control/communicator, there is still a problem on the line, notify the telephone company that they have a problem and request prompt repair service. The user may not under any circumstances (in or out of warranty) attempt any service or repairs to the system. It must be returned to the factory or an authorized service agency for all repairs.

## ***Fire Alarm System (If Installed)***

---

### **General Information**

Your fire alarm system (if installed) is active 24 hours a day, providing continuous protection. In the event of an emergency, the installed smoke and heat detectors will automatically activate your security system, triggering a loud, interrupted sound from the keypad. Optional exterior sounders will also produce an interrupted sound. Your keypad will display a **FIRE** message (with zone location) until you silence and clear the alarm display.

### **In Case of Fire**

1. Should you become aware of a fire emergency *before* your detectors sense the problem, go to your nearest keypad and press the panic key pair assigned as FIRE emergency (if programmed by the installer). The alarm will sound.
2. Evacuate all occupants from the premises.
3. If flames and/or smoke are present, leave the premises and notify your local fire department immediately.
4. If no flames or smoke are apparent, investigate the cause of the alarm. The keypad will display the zone descriptor of the zone(s) in an alarm condition.

### **Silencing a Fire Alarm**

1. Silence the alarm by pressing the  key.

To clear the alarm display, enter your security code and press the  key again.

2. If the keypad indicates a trouble condition after the second OFF sequence, check smoke detectors to see if they are responding to smoke or heat-producing objects in their vicinity. Should this be the case, eliminate the source of heat or smoke.
3. If this does not remedy the problem, there may still be smoke in the detector. Clear it by fanning the detector for about 30 seconds.
4. When the problem has been corrected, clear the display by entering your code and pressing the  key.

## Recommendations for Proper Protection

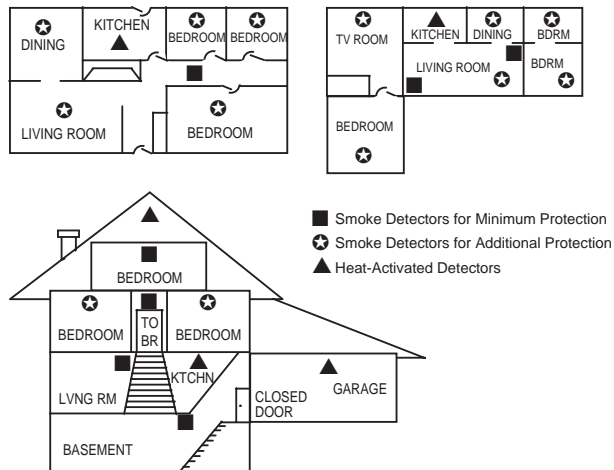
**THE FOLLOWING RECOMMENDATIONS FOR THE LOCATION OF FIRE AND BURGLARY DETECTION DEVICES HELP PROVIDE PROPER COVERAGE FOR THE PROTECTED PREMISES.**

### Recommendations for Smoke and Heat Detectors

With regard to the number and placement of smoke/heat detectors, we subscribe to the recommendations contained in the National Fire Protection Association's (NFPA) Standard #72, noted below.

Early-warning fire detection is best achieved by the installation of fire detection equipment in all rooms and areas of the household as follows: For minimum protection, a smoke detector should be installed outside of each separate sleeping area, and on each additional floor of a multi-floor family living unit, including basements. The installation of smoke detectors in kitchens, attics (finished or unfinished), or in garages is not normally recommended.

For additional protection, the NFPA recommends that you install heat or smoke detectors in the living room, dining room, bedroom(s), kitchen, hallway(s), attic, furnace room, utility and storage rooms, basements, and attached garages.



## ***Recommendations for Proper Protection (cont'd)***

---

### **In addition, we recommend the following:**

- Install a smoke detector inside every bedroom where a smoker sleeps.
- Install a smoke detector inside every bedroom where someone sleeps with the door partly or completely closed. Smoke could be blocked by the closed door. Also, an alarm in the hallway outside may not wake up the sleeper if the door is closed.
- Install a smoke detector inside bedrooms where electrical appliances (such as portable heaters, air conditioners, or humidifiers) are used.
- Install a smoke detector at both ends of a hallway if the hallway is more than 40 feet (12 meters) long.
- Install smoke detectors in any room where an alarm control is located, or in any room where alarm control connections to an AC source or phone lines are made. If detectors are not so located, a fire within the room could prevent the control from reporting a fire or an intrusion.

### **Recommendations for Proper Intrusion Protection**

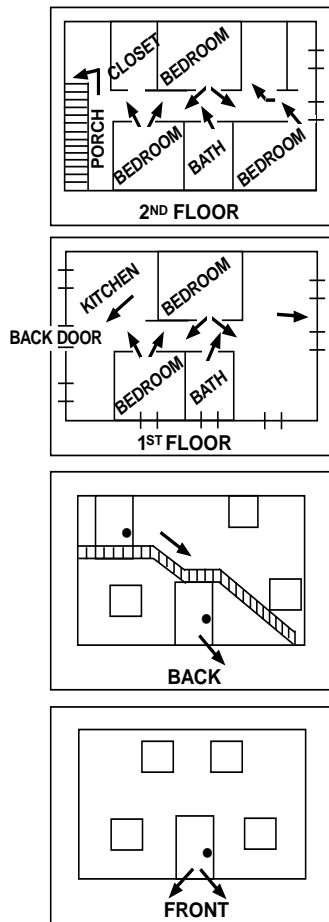
For proper intrusion coverage, sensors should be located at every possible point of entry to a home or commercial premises. This includes skylights and upper windows in a multi-level building.

In addition, we recommend that radio backup be used in a security system so that alarm signals can still be sent to the alarm monitoring station in the event that the telephone lines are out of order (alarm signals are normally sent over the phone lines, if connected to an alarm monitoring station).

# Emergency Evacuation

---

Establish and regularly practice a plan of escape in the event of fire. The following steps are recommended by the National Fire Protection Association:



1. Position your detector or your interior and/or exterior sounders so that they can be heard by all occupants.
2. Determine two means of escape from each room. One path of escape should lead to the door that permits normal exit from the building. The other should be an alternative route, such as a window, should your primary escape path be impassable. Station an escape ladder at such windows if there is a long drop to the ground.
3. Sketch a floor plan of the building. Show windows, doors, stairs, and rooftops that can be used to escape. Indicate escape routes for each room. Keep these routes free from obstruction and post copies of the escape routes in every room.
4. Assure that all bedroom doors are shut while you are asleep. This will prevent deadly smoke from entering while you escape.
5. To determine which escape path to use during a fire, first feel the door. If it is hot, check your alternate escape route. If the door is cool, open it cautiously. Be prepared to slam the door if smoke or heat rushes in.
6. Where smoke is present, crawl on the floor; do not walk upright. Smoke rises and may overcome you. Clearer air is near the floor.
7. Escape quickly; don't panic.
8. Establish a common meeting place outdoors, away from your house, where everyone can meet and then take steps to contact the authorities and account for those missing. Choose someone to assure that nobody returns to the house — many die going back.



---

## Maintaining Your System

---

### Taking Care of Your System

The components of your security system are designed to be as maintenance-free as possible. However, to make sure that your system is in reliable working condition:

1. Test your system weekly.
2. Test your system after any alarm occurs (see *Testing the System* section).

### Replacing Batteries in Wireless Sensors

*Wireless sensors may not have been installed in your security system.*

Each wireless sensor in your system has a 9-volt or 3-volt battery. The system detects a low battery in any wireless sensor, including smoke detectors, the optional personal emergency transmitter, and the optional portable wireless keypad. (The system detects a low battery in a portable wireless keypad as soon as one of its keys is pressed, and responds by displaying **00** on the wired keypad.)

Alkaline batteries provide a minimum of 1 year of operation, and in most units and applications, provide 2–4 years of service. Three-volt lithium batteries provide up to 4 or more years of operation. Actual battery life depends on the environment in which the sensor is used, the number of signals that the transmitter in the sensor has to send, and the specific type of sensor. Factors such as humidity, high or low temperatures, or large swings in temperature may all lead to the reduction of actual battery life in an installation.

If you have a low battery in a wireless sensor, the keypad displays a **LOW BATTERY** message. In addition, a battery-operated smoke detector with a low battery emits a single "chirp" sound approximately once every 20–30 seconds, identifying itself as the smoke detector with the weak battery.

**Note:** The **LOW BATTERY** message comes on as a warning that battery replacement in the indicated sensor(s) is due within 30 days. In the meantime, the sensor causing the low-battery indication is still fully operational.

**Important:** Use only batteries recommended by your installer as replacement

## ***Maintaining Your System (cont'd)***

---

### **Silencing Low Battery Warning Tones at the Keypad**

You can silence the keypad's warning tones by pressing the OFF key, but the keypad's **LOW BATTERY** message display will remain on as a reminder that you have a low-battery condition in one or more of your sensors. When you replace the weak battery with a fresh one, the sensor will send a "good battery" signal to the control as soon as the sensor is activated (opening/closing of door, window, etc.), causing the **LOW BATTERY** display to turn off. If the sensor is not activated, the display will automatically clear within approximately 1 hour.

### **Routine Care**

- Treat the components of your security system as you would any other electrical equipment. Do not slam sensor-protected doors or windows.
- Keep dust from accumulating on the keypad and all protective sensors, particularly on motion sensors and smoke detectors.
- The keypad and sensors should be cleaned carefully with a dry soft cloth. ***Do not spray water or any other fluid on the units.***

## **Quick Guide to System Functions**

<b>Function</b>	<b>Procedure</b>	<b>Comments</b>
<b>Check Zones</b>	Press [★]	Do this to view zones that are faulted when system is “not ready”.
<b>Arm System</b>	a. Enter code b. Press arming key desired (AWAY, STAY, INSTANT or MAXIMUM)	Do this to arm the system in the mode selected. You can also use single-button arming by simply pressing the “A”, “B”, or “C” key for AWAY, STAY or INSTANT arming modes, respectively. <b>Note:</b> The “C” key cannot be used if it has been programmed as a Macro key.
<b>Disarm System</b>	a. Enter code b. Press [1 OFF]	Do this to disarm the system and silence alarms.
<b>Bypass Zones</b>	a. Enter code b. Press [6 BYPASS] c. Enter zone numbers to be bypassed (use 2-digit entries)	Do this to bypass protection zones. Bypassed zones are unprotected and will not cause an alarm if violated.
<b>Quick Bypass</b>	a. Enter code b. Press [6 BYPASS ] and stop	Do this to bypass all faulted zones automatically, if programmed.
<b>Chime Mode ON</b>	a. Enter code b. Press [9 CHIME]	Do this to turn on CHIME mode. Keypad will sound if doors or windows are violated while system is disarmed.
<b>Chime Mode OFF</b>	a. Enter code b. Press [9 CHIME]	Do this to turn CHIME mode off.
<b>Test Mode ON</b>	a. Enter code b. Press [5 TEST]	Do this to enter TEST mode. Activates alarm sounder and allows sensors to be tested.
<b>Test Mode OFF</b>	a. Enter code b. Press [1 OFF]	Do this to turn TEST mode off. System returns to normal mode.
<b>Add or Change a User Code</b>	a. Enter Master code b. Press [8 CODE] key c. Enter user's 2-digit user no. d. Enter code for that user	Do this to add or change a user code.
<b>Delete a User Code</b>	a. Enter Master code b. Press [8 CODE] key c. Enter user number to be deleted	Do this to delete a user code from the system.
<b>Change a Master Code</b>	a. Enter Master code b. Press [8 CODE] key c. Press [0] + [2] (master user #) d. Enter new 4-digit Master code e. Enter new Master code again	Do this to change the existing Master code.

## Summary of Audible Notifications (Alpha Display Keypads)

SOUND	CAUSE	DISPLAY
LOUD, INTERRUPTED* Keypad & External	FIRE ALARM	<b>FIRE</b> is displayed; descriptor of zone in alarm is displayed.
LOUD, CONTINUOUS* Keypad & External	BURGLARY/AUDIBLE EMERGENCY ALARM	<b>ALARM</b> is displayed; descriptor of zone in alarm is also displayed.
ONE SHORT BEEP (not repeated) Keypad only	a. SYSTEM DISARM b. SYSTEM ARMING ATTEMPT WITH AN OPEN ZONE c. BYPASS VERIFY	a. <b>SYSTEM READY</b> is displayed. b. The number and descriptor of the open protection zone is displayed. c. Numbers and descriptors of the bypassed protection zones are displayed (one beep is heard for each zone displayed). Subsequently, the following is displayed: <b>ZONE BYPASSED SYSTEM READY</b> .
ONE SHORT BEEP (once every 40 seconds) Keypad only	SYSTEM IS IN TEST MODE	Opened zone identifications will appear.
ONE BEEP (once every 40 seconds) Keypad only	LOW BATTERY AT A TRANSMITTER	<b>LO BAT</b> displayed with description of transmitter.
TWO SHORT BEEPS Keypad only	ARM AWAY OR MAXIMUM	<b>ARMED AWAY</b> or <b>ARMED MAXIMUM</b> displayed. Red ARMED indicator lit.
THREE SHORT BEEPS Keypad only	a. ARM STAY OR INSTANT b. ZONE OPENED WHILE SYSTEM IS IN CHIME MODE	a. <b>ARMED STAY</b> or <b>ARMED INSTANT</b> displayed. Red ARMED indicator lit. b. <b>CHIME</b> displayed, descriptor of open protection zone displayed if the [*] key is pressed.
RAPID BEEPING Keypad only	a. TROUBLE b. MEMORY OF ALARM c. BELL FAILURE d. SYSTEM LOW BATTERY	a. <b>CHECK</b> displayed; descriptor of troubled protection zone is displayed. b. <b>FIRE</b> or <b>ALARM</b> is displayed; descriptor of zone in alarm is displayed. c. <b>BELL FAILURE</b> or <b>CHECK 70</b> is displayed. d. <b>SYSTEM LO BAT</b> or <b>BAT</b> is displayed.
SLOW BEEPING Keypad only	a. EXIT DELAY WARNING (if programmed) b. ENTRY DELAY WARNING	a. <b>ARMED AWAY</b> or <b>ARMED MAXIMUM</b> is displayed along with <b>You May Exit Now</b> . b. <b>DISARM SYSTEM OR ALARM WILL OCCUR</b> is displayed. Exceeding the delay time without disarming causes alarm.

\* If a bell is used as external sounder, fire alarm is *pulsed ring*; burglary/audible emergency is *steady ring*.

## Glossary

---

- ARM/DISARM:** "Armed" simply means that the burglary portion of your system is turned ON and is in a state of readiness. "Disarmed" means that the burglary system is turned OFF, and must be armed to become operational. However, even in a "disarmed" state, "emergency" and "fire" portions of your system are still operational.
- KEYPAD:** This is the area on your keypad containing numbered pushbuttons similar to those on telephones or calculators. These keys control the arming and disarming of the system, and perform other functions described in this manual.
- ZONE:** A specific area of protection.
- BYPASS:** To disarm a specific area of burglary protection while leaving other areas armed.
- DELAY ZONE:** An area of protection containing doors most frequently used to enter or exit (typically, a front door, back door, or door from the garage into the building). The delay zone allows sufficient time for authorized entry or exit without causing an alarm. Consult your installer for the entry and exit delay times that have been set for your system during installation, and record them in the space provided in the "Entry/exit delays" section at the beginning of this manual.
- SOUNDER:** This refers to any device that produces an alarm or other sound. The sounding device can be in the keypad, or it can consist of an external siren or bell.
- PANIC KEYS:** These are special pairs of keys which, when pressed at the same time, activate an emergency alarm. There are several types of emergency alarms, most are audible, but one is silent and sends a signal to the central monitoring station without any indication of this at the keypad. The *Panic Keys* section in this manual describes the operation of the panic keys in detail.
- WIRELESS DEVICES:** These are wireless sensors that provide burglary and smoke detection. When activated, they send wireless signals to the control panel, which in turn provides keypad sounds and displays to notify you of the problem. **Not all systems contain wireless devices.**
- LONG RANGE RADIO:** If this equipment is present in your system, alarm signals etc., are sent via radio to your monitoring station, in addition to those sent via telephone lines. This feature enables signals to be sent to the monitoring station in the event that the telephone lines are out of order.
-

**UL NOTICE: This is a "GRADE A" system.**

### **FEDERAL COMMUNICATIONS COMMISSION (FCC) Part 15 STATEMENT**

This equipment has been tested to FCC requirements and has been found acceptable for use. The FCC requires the following statement for your information:

This equipment generates and uses radio frequency energy and if not installed and used properly, that is, in strict accordance with the manufacturer's instructions, may cause interference to radio and television reception. It has been type tested and found to comply with the limits for a Class B computing device in accordance with the specifications in Part 15 of FCC Rules, which are designed to provide reasonable protection against such interference in a residential installation. However, there is no guarantee that interference will not occur in a particular installation. If this equipment does cause interference to radio or television reception, which can be determined by turning the equipment off and on, the user is encouraged to try to correct the interference by one or more of the following measures:

- If using an indoor antenna, have a quality outdoor antenna installed.
- Reorient the receiving antenna until interference is reduced or eliminated.
- Move the receiver away from the control/communicator.
- Move the antenna leads away from any wire runs to the control/communicator.
- Plug the control/communicator into a different outlet so that it and the receiver are on different branch circuits.

If necessary, the user should consult the dealer or an experienced radio/television technician for additional suggestions.

The user or installer may find the following booklet prepared by the Federal Communications Commission helpful: "Interference Handbook." This booklet is available from the U.S. Government Printing Office, Washington, DC 20402.

The user shall not make any changes or modifications to the equipment unless authorized by the Installation Instructions or User's Manual. Unauthorized changes or modifications could void the user's authority to operate the equipment.

## **FEDERAL COMMUNICATIONS COMMISSION (FCC) Part 68 NOTICE**

This equipment complies with Part 68 of the FCC rules. On the front cover of this equipment is a label that contains, among other information, the FCC registration number and ringer equivalence number (REN) for this equipment. If requested, this information must be provided to the telephone company.

This equipment uses the following jacks:

An RJ31X is used to connect this equipment to the telephone network.

The REN is used to determine the quantity of devices which may be connected to the telephone line. Excessive RENs on the telephone line may result in the devices not ringing in response to an incoming call. In most, but not all areas, the sum of the RENs should not exceed five (5.0). To be certain of the number of devices that may be connected to the line, as determined by the total RENs, contact the telephone company to determine the maximum REN for the calling area.

If this equipment causes harm to the telephone network, the telephone company will notify you in advance that temporary discontinuance of service may be required. If advance notice is not practical, the telephone company will notify the customer as soon as possible. Also, you will be advised of your right to file a complaint with the FCC if you believe necessary.

The telephone company may make changes in its facilities, equipment, operations, or procedures that could affect the operation of the equipment. If this happens, the telephone company will provide advance notice in order for you to make the necessary modifications in order to maintain uninterrupted service.

If trouble is experienced with this equipment, please contact the manufacturer for repair and warranty information. If the trouble is causing harm to the telephone network, the telephone company may request you remove the equipment from the network until the problem is resolved.

There are no user serviceable components in this product, and all necessary repairs must be made by the manufacturer. Other repair methods may invalidate the FCC registration on this product.

This equipment cannot be used on telephone company-provided coin service. Connection to Party Line Service is subject to state tariffs.

This equipment is hearing-aid compatible.

When programming or making test calls to an emergency number, briefly explain to the dispatcher the reason for the call. Perform such activities in the off-peak hours; such as early morning or late evening.

## CANADIAN DEPARTMENT OF COMMUNICATIONS (DOC) STATEMENT

### NOTICE

The Canadian Department of Communications label identifies certified equipment. This certification means that the equipment meets certain telecommunications network protective, operational and safety requirements. The Department does not guarantee the equipment will operate to the user's satisfaction.

Before installing this equipment, users should ensure that it is permissible to be connected to the facilities of the local telecommunications company. The equipment must also be installed using an acceptable method of connection. In some cases, the company's inside wiring associated with a single line individual service may be extended by means of certified connector assembly (telephone extension cord). The customer should be aware that compliance with the above conditions may not prevent degradation of service in some situations.

Repairs to certified equipment should be made by an authorized Canadian maintenance facility designated by the supplier. Any repairs or alterations made by the user to this equipment, or equipment malfunctions, may give the telecommunications company cause to request the user to disconnect the equipment.

Users should ensure for their own protection that the electrical ground connections of the power utility, telephone lines and internal metallic water pipe system, if present, are connected together. This precaution may be particularly important in rural areas.

**Caution:** User should not attempt to make such connections themselves, but should contact the appropriate electric inspection authority, or electrician, as appropriate.

**The Load Number (LN)** assigned to each terminal device denotes the percentage of the total load to be connected to a telephone loop which is used by the device, to prevent overloading. The termination on a loop may consist of any combination of devices subject only to the requirement that the total of the Load Numbers of all the devices does not exceed 100.

### AVIS

L'étiquette du ministère des Communications du Canada identifie le matériel homologué. Cette étiquette certifie que le matériel est conforme à certaines normes de protection, d'exploitation et de sécurité des réseaux de télécommunications. Le ministère n'assure toutefois pas que le matériel fonctionnera à la satisfaction de l'utilisateur.

Avant d'installer ce matériel, l'utilisateur doit s'assurer qu'il est permis de le raccorder aux installations de l'entreprise locale de télécommunications. Le matériel doit également être installé en suivant une méthode acceptée de raccordement. Dans certains cas, les fils intérieurs de l'entreprise utilisés pour un service individuel à la ligne unique peuvent être prolongés au moyen d'un dispositif homologué de raccordement (cordon prolongateur téléphonique interne). L'abonné ne doit pas oublier qu'il est possible que la conformité aux conditions énoncées ci-dessus n'empêche pas la dégradation du service dans certaines situations. Actuellement, les entreprises de télécommunications ne permettent pas que l'on raccorde leur matériel aux prises d'abonnés, sauf dans les cas précis prévus par les tarifs particuliers de ces entreprises.

Les réparations du matériel homologué doivent être effectuées par un centre d'entretien canadien autorisé désigné par le fournisseur. La compagnie de télécommunications peut demander à l'utilisateur de débrancher un appareil à la suite de réparations ou de modifications effectuées par l'utilisateur ou à cause de mauvais fonctionnement.

Pour sa propre protection, l'utilisateur doit s'assurer que tous les fils de mise en terre de la source d'énergie électrique, des lignes téléphoniques de réseau de conduites d'eau, s'il y en a, soient raccordés ensemble. Cette précaution est particulièrement importante dans les régions rurales.

**Avertissement:** L'utilisateur ne doit pas tenter de faire ces raccordements lui-même; il doit avoir recours à un service d'inspection des installations électriques, ou à un électricien, selon le cas.

**L'indice de charge (IC)** assigné à chaque dispositif terminal pour éviter toute surcharge indique le pourcentage de la charge totale qui peut être raccordé à un circuit téléphonique bouclé utilisé par ce dispositif. La terminaison du circuit bouclé peut être constituée de n'importe quelle combinaison de dispositifs, pourvu que la somme des indices de charge de l'ensemble des dispositifs ne dépasse pas 100.



## **WARNING!**

### **THE LIMITATIONS OF THIS ALARM SYSTEM**

While this system is an advanced design security system, it does not offer guaranteed protection against burglary or fire or other emergency. Any alarm system, whether commercial or residential, is subject to compromise or failure to warn for a variety of reasons. For example:

- Intruders may gain access through unprotected openings or have the technical sophistication to bypass an alarm sensor or disconnect an alarm warning device.
- Intrusion detectors (e.g., passive infrared detectors), smoke detectors, and many other sensing devices will not work without power. Battery-operated devices will not work without batteries, with dead batteries, or if the batteries are not put in properly. Devices powered solely by AC will not work if their AC power supply is cut off for any reason, however briefly.
- Signals sent by wireless transmitters may be blocked or reflected by metal before they reach the alarm receiver. Even if the signal path has been recently checked during a weekly test, blockage can occur if a metal object is moved into the path.
- A user may not be able to reach a panic or emergency button quickly enough.
- While smoke detectors have played a key role in reducing residential fire deaths in the United States, they may not activate or provide early warning for a variety of reasons in as many as 35% of all fires, according to data published by the Federal Emergency Management Agency. Some of the reasons smoke detectors used in conjunction with this System may not work are as follows. Smoke detectors may have been improperly installed and positioned. Smoke detectors may not sense fires that start where smoke cannot reach the detectors, such as in chimneys, in walls, or roofs, or on the other side of closed doors. Smoke detectors also may not sense a fire on another level of a residence or building. A second-floor detector, for example, may not sense a first-floor or basement fire. Moreover, smoke detectors have sensing limitations. No smoke detector can sense every kind of fire every time. In general, detectors may not always warn about fires caused by carelessness and safety hazards like smoking in bed, violent explosions, escaping gas, improper storage of flammable materials, overloaded electrical circuits, children playing with matches, or arson. Depending upon the nature of the fire and/or the locations of the smoke detectors, the detector, even if it operates as anticipated, may not provide sufficient warning to allow all occupants to escape in time to prevent injury or death.
- Passive Infrared Motion Detectors can detect intrusion only within the designed ranges as diagrammed in their installation manual. Passive Infrared Detectors do not provide volumetric area protection. They do create multiple beams of protection, and intrusion can only be detected in unobstructed areas covered by those beams. They cannot detect motion or intrusion that takes place behind walls, ceilings, floors, closed doors, glass partitions, glass doors, or windows. Mechanical tampering, masking, painting or spraying of any material on the mirrors, windows or any part of the optical system can reduce their detection ability. Passive Infrared Detectors sense changes in temperature; however, as the ambient temperature of protected area approaches the temperature range of 90° to 105°F, the detection performance can decrease.

**WARNING!**  
**THE LIMITATIONS OF THIS ALARM SYSTEM (cont'd)**

- Alarm warning devices such as sirens, bells or horns may not alert people or wake up sleepers if they are located on the other side of closed or partly open doors. If warning devices sound on a different level of the residence from the bedrooms, then they are less likely to waken or alert people inside the bedrooms. Even persons who are awake may not hear the warning if the alarm is muffled by a stereo, radio, air conditioner or other appliance, or by passing traffic. Finally, alarm warning devices, however loud, may not warn hearing-impaired people or waken deep sleepers.
- Telephone lines needed to transmit alarm signals from a premises to a central monitoring station may be out of service or temporarily out of service. Telephone lines are also subject to compromise by sophisticated intruders.
- Even if the system responds to the emergency as intended, however, occupants may have insufficient time to protect themselves from the emergency situation. In the case of a monitored alarm system, authorities may not respond appropriately.
- This equipment, like other electrical devices, is subject to component failure. Even though this equipment is designed to last as long as 10 years, the electronic components could fail at any time.

The most common cause of an alarm system not functioning when an intrusion or fire occurs is inadequate maintenance. This alarm system should be tested weekly to make sure all sensors and transmitters are working properly.

Installing an alarm system may make one eligible for lower insurance rates, but an alarm system is not a substitute for insurance. Homeowners, property owners and renters should continue to act prudently in protecting themselves and continue to insure their lives and property.

We continue to develop new and improved protection devices. Users of alarm systems owe it to themselves and their loved ones to learn about these developments.

**SERVICING INFORMATION**

Your authorized alarm dealer is the person best qualified to service your alarm system. Arranging some kind of regular service program with him is advisable.

Your alarm dealer is:

Name: \_\_\_\_\_

Address: \_\_\_\_\_

\_\_\_\_\_

Phone: \_\_\_\_\_

## OWNER'S INSURANCE PREMIUM CREDIT REQUEST

This form should be completed and forwarded to your homeowner's insurance carrier for possible premium credit.

### A. GENERAL INFORMATION:

Insured's Name and Address: \_\_\_\_\_  
\_\_\_\_\_

Insurance Company: \_\_\_\_\_ Policy No.: \_\_\_\_\_

Model: **SL150** Other \_\_\_\_\_

Type of Alarm:  Burglary  Fire  Both

Installed by: \_\_\_\_\_ Serviced by: \_\_\_\_\_  
Name Name  
Address Address

### B. NOTIFIES (Insert B = Burglary, F = Fire)

Local Sounding Device \_\_\_\_\_ Police Dept. \_\_\_\_\_ Fire Dept. \_\_\_\_\_

Monitoring Station

Name: \_\_\_\_\_

Address: \_\_\_\_\_

Phone: \_\_\_\_\_

### C. POWERED BY: AC With Rechargeable Power Supply

D. TESTING:  Quarterly  Monthly  Weekly  Other \_\_\_\_\_

Continued on other side

**OWNER'S INSURANCE PREMIUM CREDIT REQUEST  
(cont'd)**

**E. SMOKE DETECTOR LOCATIONS**

- |                                       |                                      |                                      |                                |
|---------------------------------------|--------------------------------------|--------------------------------------|--------------------------------|
| <input type="checkbox"/> Furnace Room | <input type="checkbox"/> Kitchen     | <input type="checkbox"/> Bedrooms    | <input type="checkbox"/> Attic |
| <input type="checkbox"/> Basement     | <input type="checkbox"/> Living Room | <input type="checkbox"/> Dining Room | <input type="checkbox"/> Hall  |

**F. BURGLARY DETECTING DEVICE LOCATIONS:**

- |   |  |   |   |
|---|--|---|---|
| <input type="checkbox"/> Front Door   | <input type="checkbox"/> Basement Door | <input type="checkbox"/> Rear Door          | <input type="checkbox"/> All Exterior Doors |
| <input type="checkbox"/> 1 <sup>st</sup> Floor Windows  | <input type="checkbox"/> All windows   | <input type="checkbox"/> Interior locations |   |
| <input type="checkbox"/> All Accessible Openings, Including Skylights, Air Conditioners and Vents |  |   |   |

**G. ADDITIONAL PERTINENT INFORMATION:**

---

---

---

---

---

---

---

Signature: \_\_\_\_\_ Date: \_\_\_\_\_

## INDEX

---

[#] Key.....	30	CHECK 70.....	36
[*] Key.....	15	CHECK 90.....	36
4-Digit Code.....	19	CHECK Message.....	20, 34
7-Digit Format.....	27	Chime.....	6, 12, 43, 44
<b>A</b>		Chime Mode.....	23, 43
AC.....	12	Chime-By-Zone Feature.....	23
AC LOSS Message.....	36	COMM. FAILURE.....	35
Adding a User.....	30	<b>D</b>	
Alarm.....	7, 12	D Key.....	27
ALARM Message.....	44	Day/Night Zone.....	45
Alpha Keypad.....	10,11	Deactivate Devices.....	26
Arm.....	5	Delete A User.....	31
Armed INSTANT.....	17, 44	Delete A User Code.....	43
Armed AWAY or MAXIMUM.....	18, 44	Device Command.....	26
Armed STAY.....	16	Device Control.....	26
ARMED Indicator.....	18	dl Message.....	36
Audible Emergency.....	12, 24, 44	Disarm System.....	43
AWAY.....	5, 6, 11, 43	Displaying Bypassed Zones.....	22
AWAY/MAXIMUM Mode.....	18	Duress Code.....	29
<b>B</b>		<b>E</b>	
Babysitter.....	29	EA Message.....	9
BAT Message.....	12, 35	Emergency Evacuation.....	40
Battery Replacement.....	41	Entry Delay.....	8, 16
Beeping.....	8, 34, 35, 44	Entry Delay 1.....	8
Bell Failure.....	36, 44	Entry Delay 2.....	8
bF Message.....	36	Escape Path.....	40
Burglary Protection.....	5	Exit Alarm.....	9
BYPASS.....	11	Exit Delay.....	8, 16, 17, 18
BYPASS Key.....	21, 22	<b>F</b>	
Bypass Zones.....	43	Fault Display.....	15
Bypassing Zones.....	21	FC Message.....	35
<b>C</b>		FCC Registration Number.....	47
C Key.....	25	FCC Statement.....	46
CANCELLED ALARM.....	9	FIRE.....	12
CC Message.....	35	Fire Alarm.....	12, 24, 37
Change Master Code.....	43	Fire Alarm Silencing.....	37
Change User Code.....	43	Fire Emergency.....	37
CHECK.....	12, 43, 44	FIRE Message.....	44

---

## INDEX (cont'd)

---

Fire Protection.....	6
Fire Zone.....	21
Fixed-Word Keypad .....	10, 11
<b>G</b>	
Glossary.....	45
<b>I</b>	
INSTANT.....	5, 8, 11, 17, 43
<b>K</b>	
Keypads.....	10, 11, 13
Keyswitch.....	28
<b>L</b>	
LCD.....	10
LO BAT .....	35, 44
LO BAT Message.....	35
Long Rng Trbl .....	36
Low Battery .....	41
<b>M</b>	
Macro Example.....	Appendix
Macro Key Programming .....	Appendix
Macros .....	25, Appendix
Master Code .....	31
Master Code .....	31
Master Code Change.....	31
Maximum .....	18
Memory of Alarm.....	7, 20, 44
Message .....	7
MODEM COMM.....	35
<b>N</b>	
National Fire Protection	
Association .....	38, 40
New Master Code .....	31
NO AC Message .....	12
<b>O</b>	
OC Message .....	36
OFF.....	9, 21
OFF Key.....	19
OFF Sequence.....	21
Open Circuit.....	36
Owner's Premium Credit Request Form ...	51
<b>P</b>	
Pager Code Format.....	27
"Pager Msg Sent" Display .....	27
Paging Feature.....	6, 27
Panic Alarm .....	24
Panic Key pairs .....	24, 37
Personal Emergency .....	24, 41
<b>Q</b>	
Quick Arming.....	16, 17, 18, 29, 30
Quick Bypass .....	22, 43
Quick Guide to System Functions .....	43
<b>R</b>	
READY TO ARM Message.....	19, 20, 21
RF Jam.....	36
Ringer Equivalence Number .....	47
RJ31X Jack .....	47
<b>S</b>	
Security Codes.....	6, 19, 29
Servicing Information.....	50
Silence Alarm .....	19
Silencing LOW BAT Warnings .....	42
Silent Emergency .....	24
Single-Button Paging.....	27
Smoke Detectors .....	33, 38, 39
Sounder.....	7, 10, 32, 35
Speedkey (macros) .....	25, 43
STAY .....	5
System Care.....	41
System Low Battery .....	44
System Overview .....	5
SYSTEM READY message... ..	15, 16, 17, 18, 19, 22, 32, 44
<b>T</b>	
Telco Fault.....	35
Telephone Communication .....	35
Telephone Problems .....	46
Temporary Users.....	30
Test Mode .....	32, 43, 44
TEST Key .....	32
TROUBLE.....	44

---

## ***INDEX (cont'd)***

---

Trouble Conditions.....	34	W	Warnings/Limitations.....	49
Trouble Sounds .....	19		Weak Battery.....	42
Two-line Alpha Keypad.....	10, 11		Wireless Detector.....	34
Typical Pager Displays .....	27		Wireless Motion Detectors .....	33
U			Wireless Sensor.....	41
User Number.....	27, 29	Z		
V			Zones .....	5, 9
Voice Messages .....	7			
Voice Module .....	7			

## Appendix – Macro Key Programming & Usage

---

### About the Macro Key (C key)

The “C” key can be used to automatically activate a series of commands of up to 16 keystrokes. These keystrokes, as a group, are called macros and are stored in the system's memory.

You (or your installer) can program the “C” key to be used for these commands (check with your installer if necessary).

Typical macro functions can include:

- Arming sequences: STAY, INSTANT, AWAY, or MAXIMUM
- Bypassing particular zones
- Activating relay(s) for turning on (or off) lights, fans, etc.

### What to Include in a Macro Program

Over time, you may find that you frequently enter the same series of commands into your keypad. For example, you may bypass the two upstairs window zones, then turn on an exterior light, and then arm the security system in the AWAY mode. Rather than entering the numerous keystrokes this would normally require each time, you can program the “C” key to perform the entire sequence by simply pressing the “C” key and then entering your 4-digit user code at the prompt that immediately follows – a total of only five keystrokes.

If the “C” key has been set to function as a Macro key\*, you can program this key with any desired series of commands. Using this feature, up to 16 keystrokes can be programmed. *The Macro can be initiated only when the system is disarmed.*

\* Refer to the *Security Codes* section. To enable the “C” key to function as a macro key, follow the procedure under “To Add or Change a User's Code”.

### How to Program a Macro Key

To program macro functions for the “C” key, first do the following:

LRN WHICH MACRO? 0, 1 or 2
-------------------------------

1. Enter your **4-digit security code**, press the [#] key, then press/hold the Macro [C] key for at least two seconds. This prompt appears.
2. Enter “1” or “2”. Remember, there are two macros available, but only one macro can be assigned to a user.



## Appendix – Macro Key Programming & Usage (Continued)

---



SPEED LEARN MODE

This prompt will be displayed.

3. Enter the first of the series of desired commands, (it is **not** necessary to precede any commands with your user code when programming a Macro), then press/hold the “C” key for at least two seconds to complete the first command. Pressing the “C” key acts as a terminator at the end of each separate command, and appears as an “F” in the keypad display.

The keypad beeps to acknowledge your input and displays the command you entered (followed by the letter “F”).

4. Enter the next command, followed by press/holding the “C” key for at least two seconds. The keypad beeps to acknowledge this input and displays all the keystrokes you have entered so far.
5. Repeat until the all the desired commands (up to a total of 16 keystrokes including the Macro key indications of “F”) have been entered.



\*\*\* SYSTEM READY \*\*\*

6. To exit from this Macro programming mode, press/hold the “C” key for at least two seconds. The display returns to system status and indicates system is ready.

### **Typical Example of Macro Programming**

Suppose you want to (1) bypass the two upstairs window zones, then (2) turn on an exterior porch light, and then (3) arm the security system in the AWAY mode. The procedures in the table that follows show you how you would program a macro function sequence consisting of these three commands:

1. Bypass zones 2 and 3 (upstairs windows in this example)
2. Turn a porch light on (relay device operation)
3. Arm your system in the AWAY mode (arming command)

### **Macro Programming Procedure**

You must first enter your **4-digit security code**, press the [#] key, then press/hold the Macro [C] key for at least two seconds.

## Appendix – Macro Key Programming & Usage (Continued)

This provides entry into the “Speed Learn Mode” with its accompanying display.

SPEED LEARN MODE

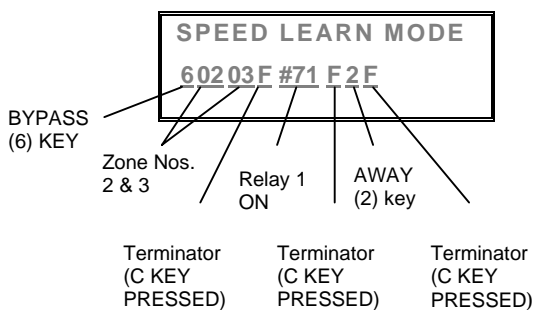
You would then proceed as indicated in the table below.

Function	Keystrokes Required	Keypad Displays
1. Bypass zones 02 and 03	Press BYPASS [6] key, then 2-digit zone numbers 02 & 03.	6 0 2 0 3
2. End this part of the command	Press the “C” key for at least 2 seconds	6 0 2 0 3 F
3. Turn relay 1 on (e.g., relay 1 operates the porch light)	Press [#] and 7 keys for “relay ON”, and [1] key for selecting relay 1	6 0 2 0 3 F # 7 1
4. End this part of the command	Press the macro [C] key for at least 2 seconds	6 0 2 0 3 F # 7 1 F
5. Arm system AWAY	Press AWAY [2] key	6 0 2 0 3 F # 7 1 F 2
6. End this part of the command	Press the macro [C] key for at least 2 seconds	6 0 2 0 3 F # 7 1 F 2 F

At this point, the full display will appear as shown below.

SPEED LEARN MODE  
60203F#71F2F

Always be sure to verify the correctness of your instructions before continuing. If you made a mistake, you must start all over from, “How to Program a Macro Key.”



The display at the left is the same as that above, but identifies each individual command entered for this particular macro sequence.

**To exit the SPEED LEARN MODE**, press the Macro [C] key for at least two seconds again.

**Note:** To erase and re-program the Macro key, simply key in your 4-digit user code plus [#] plus your Macro key and repeat the programming steps.

## ***Appendix – Macro Key Programming & Usage (Continued)***

---

### ***How to Use Your Macro Key after You Have Programmed It***

To initiate a macro at any time **while the system is disarmed**, press the Macro (C) key for at least 2 seconds. The following display appears:



ENTER USER CODE  
\*\*\*\*

Enter your 4-digit user code. The macro sequence that you have programmed now begins automatically.

The “Enter User Code” will remain displayed for less than 10 seconds and the display will clear whether or not you entered your security code. Obviously, if you do not enter your user code, the macro sequence will not be initiated. All the instructions you entered in the macro key will remain inactive until you enter your valid user code at the “Enter User Code” prompt.

### ONE YEAR LIMITED WARRANTY

Alarm Device Manufacturing Company, a Division of Pittway Corporation, and its divisions, subsidiaries and affiliates ("Seller"), 165 Eileen Way, Syosset, New York 11791, warrants its security equipment (the "product") to be free from defects in materials and workmanship for one year from date of original purchase, under normal use and service. Seller's obligation is limited to repairing or replacing, at its option, free of charge for parts, labor, or transportation, any product proven to be defective in materials or workmanship under normal use and service. Seller shall have no obligation under this warranty or otherwise if the product is altered or improperly repaired or serviced by anyone other than the Seller. In case of defect, contact the security professional who installed and maintains your security equipment or the Seller for product repair.

This one year Limited Warranty is in lieu of all other express warranties, obligations or liabilities. THERE ARE NO EXPRESS WARRANTIES, WHICH EXTEND BEYOND THE FACE HEREOF. ANY IMPLIED WARRANTIES, OBLIGATIONS OR LIABILITIES MADE BY SELLER IN CONNECTION WITH THIS PRODUCT, INCLUDING ANY IMPLIED WARRANTY OF MERCHANTABILITY, OR FITNESS FOR A PARTICULAR PURPOSE OR OTHERWISE, ARE LIMITED IN DURATION TO A PERIOD OF ONE YEAR FROM THE DATE OF ORIGINAL PURCHASE. ANY ACTION FOR BREACH OF ANY WARRANTY, INCLUDING BUT NOT LIMITED TO ANY IMPLIED WARRANTY OF MERCHANTABILITY, MUST BE BROUGHT WITHIN 12 MONTHS FROM DATE OF ORIGINAL PURCHASE. IN NO CASE SHALL SELLER BE LIABLE TO ANYONE FOR ANY CONSEQUENTIAL OR INCIDENTAL DAMAGES FOR BREACH OF THIS OR ANY OTHER WARRANTY, EXPRESS OR IMPLIED, OR UPON ANY OTHER BASIS OF LIABILITY WHATSOEVER, EVEN IF THE LOSS OR DAMAGE IS CAUSED BY THE SELLER'S OWN NEGLIGENCE OR FAULT. Some states do not allow limitation on how long an implied warranty lasts or the exclusion or limitation of incidental or consequential damages, so the above limitation or exclusion may not apply to you.

Seller does not represent that the product may not be compromised or circumvented; that the product will prevent any personal injury or property loss by burglary, robbery, fire or otherwise; or that the product will in all cases provide adequate warning or protection. Buyer understands that a properly installed and maintained alarm may only reduce the risk of a burglary, robbery, fire or other events occurring without providing an alarm, but it is not insurance or a guarantee that such will not occur or that there will be no personal injury or property loss as a result.

CONSEQUENTLY, SELLER SHALL HAVE NO LIABILITY FOR ANY PERSONAL INJURY, PROPERTY DAMAGE OR OTHER LOSS BASED ON A CLAIM THE PRODUCT FAILED TO GIVE WARNING. HOWEVER, IF SELLER IS HELD LIABLE, WHETHER DIRECTLY OR INDIRECTLY, FOR ANY LOSS OR DAMAGE ARISING UNDER THIS LIMITED WARRANTY OR OTHERWISE, REGARDLESS OF CAUSE OR ORIGIN, SELLER'S MAXIMUM LIABILITY SHALL NOT IN ANY CASE EXCEED THE PURCHASE PRICE OF THE PRODUCT, WHICH SHALL BE THE COMPLETE AND EXCLUSIVE REMEDY AGAINST SELLER. This warranty gives you specific legal rights, and you may also have other rights which vary from state to state. No increase or alteration, written or verbal, to this warranty is authorized.



*Two Mid America Plaza  
Suite 200  
Oakbrook Terrace, Illinois, 60181*

