

Thank you for choosing AMC WiFi HOTSPOT.

Before using the wireless data card, please read the safety precautions carefully and also let your children know these, so that you can use your wireless data card correctly and safely.

- Do not use your wireless data card while driving
- Switch off your wireless data card in aircraft. The wireless data card may cause interference to control signals of the aircraft
- Follow the rules or regulations in hospitals and health care facilities. Switch off your wireless data card near medical apparatus
- Do not switch on your wireless data card when it is prohibited to use wireless device or when the wireless data card may cause interference or danger
- Switch off your wireless data card near high-precision electronic devices. The wireless data card may affect the performance of these devices.
- Do not attempt to disassemble your wireless data card
- Do not use your wireless data card in a high-temperature place or place with flammable gas such as a gas station
- Keep your wireless data card away from children
- The wireless data card is not water-resistant. Keep it dry. Protect the wireless data card from water or vapor. Do not touch the wireless data card with a wet hand. Otherwise, short-circuit and malfunction of the product or electric shock can be caused
- Do not place magnetic storage media near your wireless data card.
- On a thunder stormy day, do not use your wireless data card outdoors

Content

1	Product Overview.....	3
2	Getting to Know Your USB data card	3
3	Software Installation and Uninstallation	5
3.1	Installing the Application on Windows Serials OS.....	5
3.2	Uninstalling the Application on Windows Serials OS	6
3.3	Installing the Application on MAC OS X	6
3.4	Uninstalling the Application on MAC OS X	6
4	Login HOTSPOT Web Server	6
5	Quick Setup	6
6	Connection.....	7
6.1	Connection Status	7
6.2	Usage History.....	7
6.3	Profile Management.....	7
6.4	Network.....	7
6.5	PIN Code Management	7
6.6	Connected Device(s).....	7
7	SMS.....	7
7.1	Inbox.....	7
7.2	Write SMS.....	8
7.3	Sent.....	8
7.4	Draft	8
7.5	SMS Settings	8
8	Settings.....	8
8.1	WiFi	8
8.2	WPS	8
8.3	Router.....	9
8.4	Language.....	9
8.5	Diagnostic	9
8.6	Advanced Settings.....	9
9	Help.....	9
10	FAQs.....	9

1 Product Overview

AMC WiFi HOTSPOT is the HSPA+ pocket hotspot, which provides up to 21.6Mbps downlink, up to 5.76Mbps uplink. Users can surf internet anywhere and anytime when 3G network covered. The powerful router function which supports for 10 WiFi devices can help users to enjoy their network sharing life.

Main feature

Support HSPA+ / UMTS (2100MHz/900MHz), GSM / GPRS / EDGE (850/900/1800/1900MHz)

Support HSPA+ (21.6 Mbps), HSUPA (5.76 Mbps), UMTS (384 Kbps), EDGE (237 Kbps), GPRS (85.6 Kbps)

1+10:1 NDIS USB access plus 10 WIFI access. (Allows up to 10 Wi-Fi enabled devices to connect to the internet.)

Support SMS

Support USB 2.0 High speed

Support USB Mass Storage, the maximum capacity of 32G

Support Zero-CDROM automatically installs

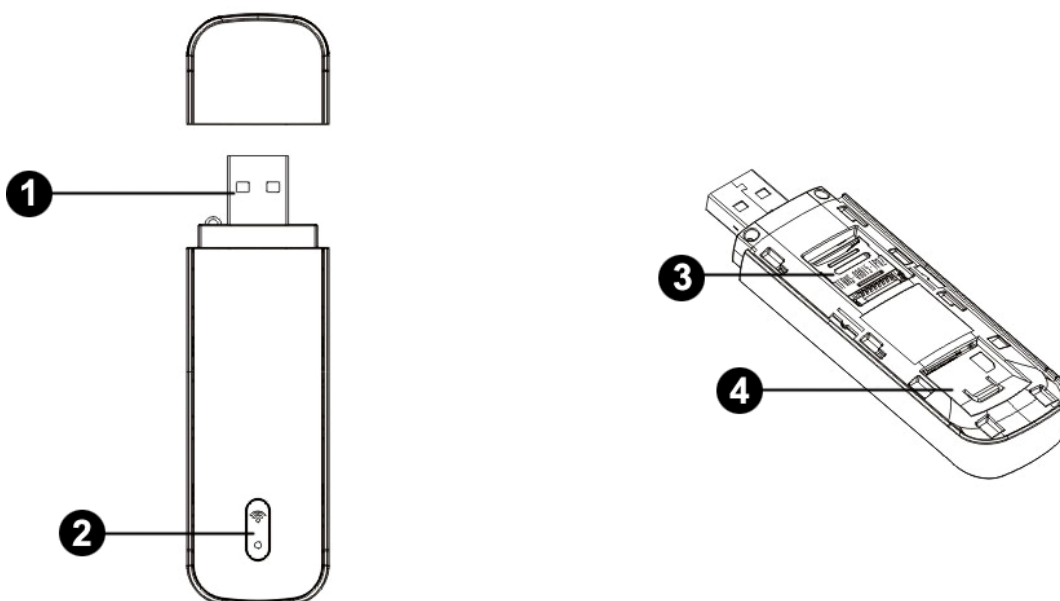
Support plug-and-play

Support multiple languages

Operating system support Windows XP/VISTA/ Windows 7, Mac OS (10.5,10.6,10.7)

2 Getting to Know Your USB data card

The following picture shows the appearance of the USB Stick. This is a schematic picture of the Data Card. Your Data Card may be different from this one



1 USB Connector

It connects the USB Stick to a PC.

2 Indicator

Network LED:

LED Indicator	Description
Lilac Light Flashing for seconds	Power supply finished
Orange Light Slow Flashing	Network Searching
Constant Orange Light	Out of order
Green Light Slow Flashing	Registered to 3G network
Constant Green Light	Connected to 3G network
Red Light Slow Flashing	Registered to 2G network
Constant Red Light	Connected to 2G network

WIFI LED:

LED Indicator	Description
Constant Blue light	Wifi transfer
Blue Light close	Wifi close
Blue Light Slow Flashing (Continuation 5 seconds)	Receive SMS

3 MicroSD Card Slot

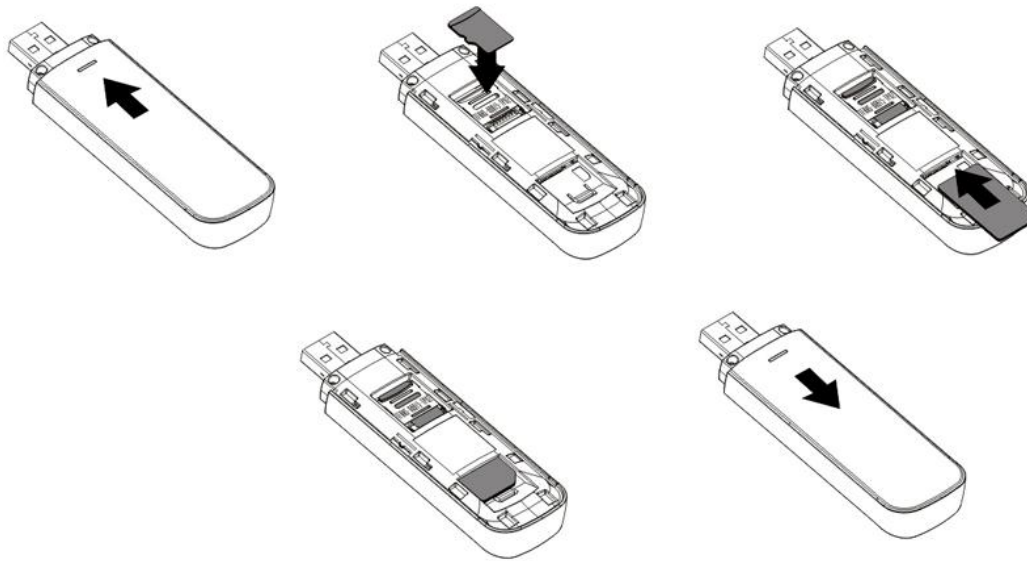
It holds a microSD card

4 SIM Card Slot

It holds a User Identity Module (SIM) card

Getting Your USB Stick Ready

1. Slide the back cover to remove it from the USB Stick.
2. Insert the SIM card and the microSD card into the corresponding card slots, as shown in the following picture
3. Replace the back cover and slide it into place

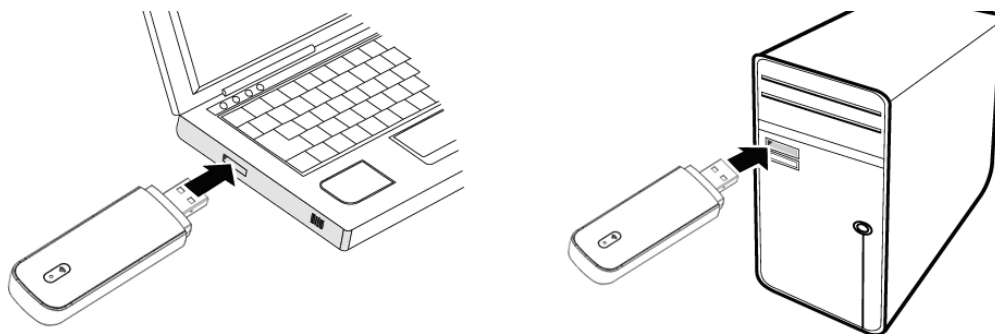


Note:

- The microSD card is an optional accessory. If it is not provided in the package, you can buy one yourself.
- Ensure that the beveled edge of the SIM card is properly aligned with that of the SIM card slot and the microSD card is inserted according to the direction as labeled on the microSD card slot.
- Do not remove the microSD or SIM card when the card is in use. Otherwise, the card as well as your USB Stick may get damaged and the data stored on the card may be corrupted.

Installation/Removal Guide

The procedure for installing as following picture



[3 Software Installation and Uninstallation](#)

[3.1 Installing the Application on Windows Serials OS](#)

Connect the data card to your PC, and follow the on-screen instructions to finish the installation. If installation does not start automatically then go to my computer and

click on the CDROM icon “Web Connection”

3.2 Uninstalling the Application on Windows Serials OS

There are two ways to uninstall the software

First one: Click **Start > All programs > Web Connection**, and choose **Web Connection Uninstall**, follow the on-screen instructions to finish the uninstall

Second one: Go to **Control Panel > Add or Remove Programs**, choose **Web Connection** to remove the application from your PC.

3.3 Installing the Application on MAC OS X

Connect the data card to your PC, and follow the on-screen instructions. Click the **Restart** button to finish installing the software and Please plug in Data Card again. The application runs automatically.

3.4 Uninstalling the Application on MAC OS X

Go to **Applications**, and choose **Web Connection Uninstaller**

4 Login HOTSPOT Web Server

Step1 Search the SSID named as “AMC 3G Wi-Fi_XXXX”.

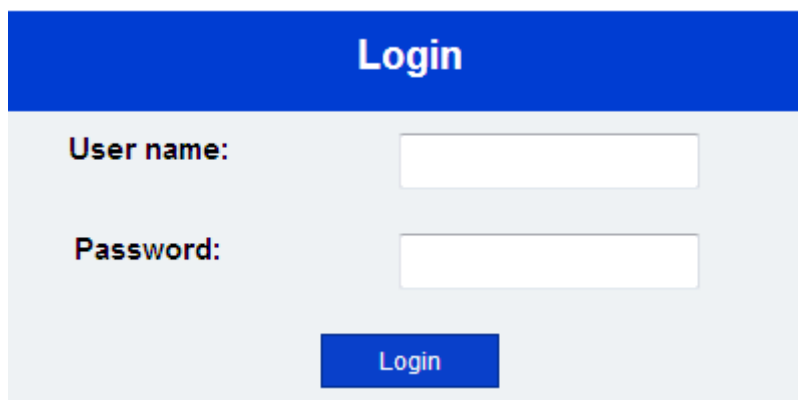
Step2 Join into the “AMC 3G Wi-Fi_XXXX” and the Security is WPA-PSK AES.

Password is “amcalbania”.

Step3 Open the Web browser, enter <http://192.168.1.1> or <http://w600.home> into the address bar.

Step4 Enter the User/Password: admin/admin.

Step5 Click Login button to login in MIFI web server.



The image shows a web browser interface for logging into a MIFI web server. At the top, there is a blue header with the word "Login" in white. Below the header, there are two input fields: "User name:" and "Password:". A blue button labeled "Login" is positioned below the password field.

After Login webserver, you can tap Logout button to quit.

5 Quick Setup

You can adjust some admin set in this interface:

- Connection Mode: Set the connect mode is Auto or Manual
- SSID: Set SSID
- Login Password: Change Login Password

- Security: Set the Security mode, password and so on.

6 Connection

6.1 Connection Status

This interface show Connection Status, contain Current Connection, WAN Status and WLAN Status.

6.2 Usage History

It shows Usage History, you can clear history or refresh it.

6.3 Profile Management

In profile management interface, user can input Profile Name, User name, Number, Password, APN and Protocol information, and select a profile for Connection:

- Save: Save user modify for current profile.
- New: Create a new profile.
- Edit: Select a profile to edit.
- Delete: Delete the selected profile.
- Set Default: Set the current profile as default connection profile.

6.4 Network

You can set Network Mode and Network Selection in this interface:

1. Network mode: Auto, 3G only, 2G only
2. Network selection: Automatic, Manual

6.5 PIN Code Management

- You can management SIM PIN in this interface. It contains Enable, Disable, and Change PIN code. If your PIN code is lock, you can unlock it by input PUK code. If PUK code is lock, this SIM card will invalidate.
- When you are required to enter the Personal Identification Number (PIN) code, enter the correct PIN and click OK. If you fail to enter the correct PIN or PIN Unblocking Key (PUK) code, the network-related functions would be unavailable.
- The (U) UIM card is supplied by the service provider. Please contact your service provider for more details. If you forget PIN code, please contact them as soon as possible.

6.6 Connected Device(s)

This interface display Connected Device(s) list.

7 SMS

7.1 Inbox

You can browse your received SMS in this box. In this box, you can switch page by

previous and next button. And it also support Mark All, Unmark All, Refresh, and delete function in this page.

7.2 Write SMS

You can send or save the SMS in this page.

7.3 Sent

You can browse your sent SMS in this box. In this box, you can switch page by previous and next button. And it also support Mark All, Unmark All, Refresh, and delete function in this page.

7.4 Draft

You can browse your draft SMS in this box. In this box, you can switch page by previous and next button. And it also support Mark All, Unmark All, Refresh, and delete function in this page.

7.5 SMS Settings

In this page, you can set up the Short Message Service center number. And set the SMS save in SIM Card or Device.

8 Settings

8.1 WiFi

You can set wifi configure in this page.

- 802.11 Mode: Select 802.11 Mode which you want.

Note: 802.11n mode only supports WPA/WPA2 AES!

- SSID: Set your SSID.
- WiFi Channel: You can select 1~14, or select auto.
- Max Number of Users: Set Max Number of Users from 1~10.
- Security: Select Security mode, and input corresponding password.

Note:

Input 5 ASCII characters or 10 hexadecimal digits for a 64-bit key.

Input 13 ASCII characters or 26 hexadecimal digits for a 128-bit key.

The WPA Pre-Shared Key (PSK) should be 8-63 ASCII characters or 64 hexadecimal digits.

8.2 WPS

- PBC (Push Button Configuration):
 - 1, On the client (eg PC), open the WiFi access utility and select the PBC;
 - 2, Login web page (192.168.1.1), Settings->WPS;
 - 3, Enable PBC and click the icon on the right.
- PIN:
 - 1, On the client (eg PC), open the WiFi access utility and select the PIN method,

- then a 8 digits PIN code will be generated;
- 2, Login web page(192.168.1.1),Settings->WPS;
- 3,Enable PIN and entered the 8 digits PIN code;
- 4, Click <Apply>

8.3 Router

Set router information in this page. Contain Home Address, Subnet Mask, Host Name, DHCP Server, DHCP IP Pool, and DHCP IP Lease Time.

8.4 Language

Select language in this page.

8.5 Diagnostic

- Show basic Diagnostic information for device. Contain Software Version, Hardware Version, Device Name, IMEI, MAC Address, IP Address, and Subnet Mask.
- Click Reboot button to restart the device.

8.6 Advanced Settings

- Configuration file management:
 - Download (Backup) the configuration.
 - Upload (Restore) a configuration file.
 - Restore Factory Default settings.
- MAC Filter: Set Control and manage the device accessing the WLAN. (improve the security of WLAN). If enable the MAC Filter, only the device in allow list can accessing the WLAN.

9 Help

Tap this button will show User manual.

10 FAQs

- What should I do if I cannot access the Internet?
 1. Check the network signal strength.
 2. Check whether you have activated the wireless online service. You can contact your service provider to further information.