

**MANUFACTURING  
NUMBERS:**

9200580  
9200584  
9200582

***roundup***  
**FOOD EQUIPMENT DIVISION**



Distributed by  
**Comcater Pty Ltd**  
156 Swann Drive  
Derrimut VIC 3030  
Phone: (03) 8369 4600  
Fax: (03) 8369 4696  
[www.comcater.com.au](http://www.comcater.com.au)

# ***VERTICAL CONTACT TOASTER***

***Model VCT-20 Deluxe***



P/N 1010747 Rev. C 06/02



# ***Owner's Manual***

## TABLE OF CONTENTS

|  |   |   |            |
|--|---|---|------------|
| <b>Owner Information</b> .....                         | 1 | <b>Operation</b> .....                      | 7          |
| <i>General</i> .....                                   | 1 | <i>Operating Instructions</i> .....         | 7          |
| <i>Warranty Information</i> .....                      | 1 | <i>Temperature Adjustments</i> .....        | 7          |
| <i>Service/Technical Assistance</i> .....              | 2 | <i>Safety Features</i> .....                | 9          |
| <b>Important Safety Information</b> .....              | 2 | <i>Fault Messages</i> .....                 | 9          |
| <b>Specifications</b> .....                            | 4 | <b>Maintenance</b> .....                    | 10         |
| <i>Electrical Ratings</i> .....                        | 4 | <i>Cleaning Black Release Sheet</i>         |            |
| <i>Electrical Cord &amp; Plug Configurations</i> ..... | 4 | <i>Conveyor Belts &amp; Toaster</i> .....   | 10         |
| <i>Model Designation</i> .....                         | 4 | <i>Replacing Belt Wraps</i> .....           | 11         |
| <i>Dimensions</i> .....                                | 4 | <i>Stainless Steel Conveyor Belts</i> ..... | 12         |
| <b>Installation</b> .....                              | 5 | <i>Replacing Roller Tensioners</i> .....    | 12         |
| <i>Unpacking</i> .....                                 | 5 | <b>Troubleshooting</b> .....                | 13         |
| <i>Assembling the Unit</i> .....                       | 5 | <b>Parts Identification</b> .....           | 15         |
| <i>Equipment Setup</i> .....                           | 6 | <b>Replacement Parts</b> .....              | 16         |
|  |   | <b>Wiring Diagrams</b> .....                | 20         |
|  |   | <b>Warranty</b> .....                       | Back Cover |

## OWNER INFORMATION

### General

The Vertical Contact Toaster Model VCT-20 is designed for contact toasting of buns. The toaster design allows the operator to place buns on both sides of the heated platen at the same time. Buns are placed into the top of the toaster and uniform, golden brown, warm buns are then retrieved at the base of the toaster.

This manual provides the safety, installation and operating procedures for the Vertical Contact Toaster Model VCT-20. We recommend that all information contained in this manual be read prior to installing and operating the unit.

Your Vertical Contact Toaster Model VCT-20 is manufactured from the finest materials available and is assembled to Roundup's strict quality standards. This unit has been tested at the factory to ensure dependable trouble-free operation.

### Warranty Information

Please read the full text of the Limited Warranty in this manual.

If the unit arrives damaged, contact the carrier immediately and file a damage claim with them. Save all packing materials when filing a claim. Freight damage claims are the responsibility of the purchaser and **are not** covered under warranty.

The warranty **does not** extend to:

- Damages caused in shipment or damage as result of improper use.
- Installation of electrical service.
- Normal maintenance as outlined in this manual.
- Malfunction resulting from improper maintenance.
- Damage caused by abuse or careless handling.
- Damage from moisture into electrical components
- Damage from tampering with, removal of, or changing any preset control or safety device.

**IMPORTANT! Keep these instructions for future reference. If the unit changes ownership, be sure this manual accompanies the equipment.**

# VERTICAL CONTACT TOASTER



## Service/Technical Assistance

If you experience any problems with the installation or operation of your unit, contact your local Roundup Authorized Service Agency.

Fill in the information below and have it handy when calling your authorized service agency for assistance. The serial number is on the specification plate located on the rear of the unit.

Purchased From: \_\_\_\_\_

Date of Purchase: \_\_\_\_\_

Model No.: \_\_\_\_\_

Serial No.: \_\_\_\_\_

Mfg. No.: \_\_\_\_\_

Refer to the service agency directory included with your unit.

Authorized Service Agency

Name: \_\_\_\_\_

Phone No.: \_\_\_\_\_

Address: \_\_\_\_\_

Use only genuine Roundup replacement parts in this unit. Use of replacement parts other than those supplied by the manufacturer will void the warranty. Your Authorized Service Agency has been factory trained and has a complete supply of parts for this toaster.

You may also contact the factory at **1-877-392-7854** or **630-784-1000** if you have trouble locating your local authorized service agency.

## IMPORTANT

**A.J. Antunes & Co. reserves the right to change specifications and product design without notice. Such revisions do not entitle the buyer to corresponding changes, improvements, additions or replacements for previously purchased equipment.**

## IMPORTANT SAFETY INFORMATION

Throughout this manual, you will find the following safety words and symbols that signify important safety issues with regards to operating or maintaining the equipment.

### **WARNING**

**GENERAL WARNING.** Indicates information important to the proper operation of the equipment. Failure to observe may result in damage to the equipment and/or severe bodily injury or death.

### **WARNING**

**ELECTRICAL WARNING.** Indicates information relating to possible shock hazard. Failure to observe may result in damage to the equipment and/or severe bodily injury or death.

### **CAUTION**

**GENERAL CAUTION.** Indicates information important to the proper operation of the equipment. Failure to observe may result in damage to the equipment.

### **WARNING**

**HOT SURFACE WARNING.** Indicates information important to the handling of equipment and parts. Failure to observe

In addition to the warnings and cautions in this manual, use the following guidelines for safe operation of the unit.

- Read all instructions before using equipment.
- For your safety, the equipment is furnished with a properly grounded cord connector. Do not attempt to defeat the grounded connector.
- Install or locate the equipment only for its intended use as described in this manual. Do not use corrosive chemicals in this equipment.
- Do not operate this equipment if it has a damaged cord or plug, if it is not working properly, or if it has been damaged or dropped.
- This equipment should be serviced by qualified personnel only. Contact the nearest Roundup authorized service facility for adjustment or repair.
- Do not block or cover any openings on the unit.
- Do not immerse cord or plug in water.
- Keep cord away from heated surfaces.
- Do not allow cord to hang over edge of table or counter.

The following warnings and cautions appear throughout this manual and should be carefully observed.

- Turn the unit off, disconnect the power source and allow unit to cool down before performing any service or maintenance on the unit.
  - The toaster should be grounded according to local electrical codes to prevent the possibility of electrical shock. It requires a grounded receptacle with separate electrical lines, protected by fuses or circuit breaker of the proper rating.
- Bread may burn. Therefore toasters must not be used near or below curtains or other

combustible walls and materials. Failure to maintain safe operating distances may cause discoloration or combustion.

- When installing conveyor belt wrap, be careful not to wrap it over the upper and lower support rods or permanent damage to belt will occur. Make sure belt wrap is positioned **UNDER** the upper and lower support rods.
- Make sure both ends of belt wrap are aligned evenly before installing belt wrap pin.
- Failure to use release sheets may result in damage to the equipment and loss of warranty coverage.
- This appliance shall not be cleaned with a water jet.
- If supply cord is damaged, it must be replaced by the manufacturer or its service agent, or a similarly qualified person.
- All electrical connections must be in accordance with local electrical codes and any other applicable codes.
- **WARNING, ELECTRICAL SHOCK HAZARD. FAILURE TO FOLLOW THESE INSTRUCTIONS COULD RESULT IN SERIOUS INJURY OR DEATH.**
  - Electrical ground is required on this appliance.
  - Do not modify the power supply cord plug. If it does not fit the outlet, have a proper outlet installed by a qualified electrician.
  - Do not use an extension cord with this appliance.
  - Check with a qualified electrician if you are in doubt as to whether the appliance is properly grounded.

## SPECIFICATIONS

### Electrical Specifications at Listed Voltages

| Voltage | Watts | Amps | Hertz |
|---------|-------|------|-------|
| 208     | 4000  | 19.2 | 50/60 |
| 220     | 4480  | 20.4 | 50/60 |
| 240     | 5322  | 22.2 | 50/60 |

#### ⚠ WARNING ⚠

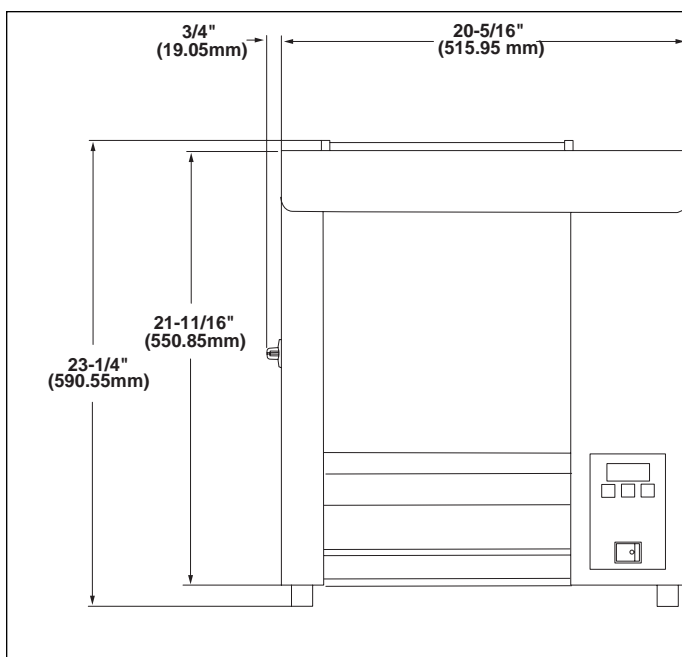
**ELECTRICAL SHOCK HAZARD. FAILURE TO FOLLOW THE INSTRUCTIONS IN THIS MANUAL COULD RESULT IN SERIOUS INJURY OR DEATH.**

- Electrical ground is required on this appliance.
- Do not modify the power supply cord plug. If it does not fit the outlet, have a proper outlet installed by a qualified electrician.
- Do not use an extension cord with this appliance.
- Check with a qualified electrician if you are in doubt as to whether the appliance is properly grounded.

#### ⚠ CAUTION ⚠

All electrical connections must be in accordance with local electrical codes and any other applicable codes.

### Dimensions



### Electrical Cord & Plug Configurations

| Letter Code* | Description  | Configuration |
|--------------|--|---------------|
| S            | Straight Twist Lock<br>30 Amp, 250 VAC                   |               |
| I            | International Pin & Sleeve<br>IEC-309<br>16 Amp, 250 VAC |               |
| C            | Commercial Cord  |               |
| H            | Harmonized Cord  |               |

\* Used in Model Designation

### Model Designation

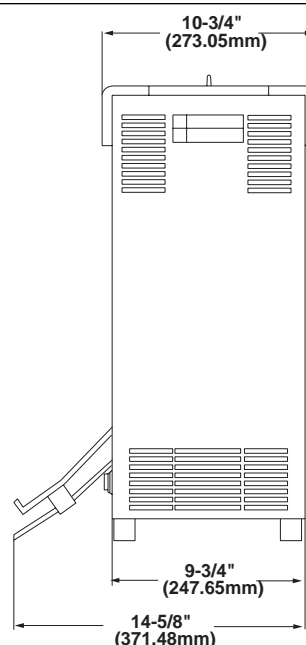
#### VCT-20XX

##### TYPE OF POWER CORD

H = HARMONIZED  
C = COMMERCIAL

##### TYPE OF PLUG

S = Straight Twist-Lock (L6-20P)  
V = NEMA 6-20P  
I = IEC-309



## INSTALLATION

### Unpacking

1. Remove unit and all packing materials from shipping carton.
2. Open the included large box. It should contain the following:
  - bun chute (Figure 1)
  - release sheets (Figure 2)
  - owner's manual
3. Remove all shipping tape and protective coverings from the unit and parts.

**NOTE:** If any parts are missing or damaged, contact Antunes Technical Service IMMEDIATELY at 1-877-392-7854 or 630-784-1000.

### Assembling the Unit

1. Remove bun chute from the additional box and install (Figure 1.)
2. Remove the release sheet from the plastic bag and lay it on a clean, flat surface. Fold the sheet exactly in half (Figure 2).
3. Crease the sheet at the fold using only your fingers (Figure 2).

**IMPORTANT:** Do not use metal tools to crease the release sheet.

4. Install the release sheet by draping it over both sides of the platen surface. The crease should be centered directly on top of the platen (Figure 3).
5. Install the heat shield. The heat shield clips fit over the top of the platen securing the release sheet (Figure 3).

#### ⚠ CAUTION ⚠

Failure to use release sheets may result in damage to the unit and loss of warranty coverage.

**NOTE:** Check the release sheet to make sure it is not caught in the conveyor. Additional release sheets can be obtained through your authorized service agency under part no. 7000249 (3 pack) or 7000250 (10 pack).

**IMPORTANT:** Make sure heat shield assy. is activating (depressing) the conveyor interlock switch (see Figure 3). The conveyors will not rotate unless the heat shield is in place and interlock switch is activated (depressed).

6. Install power cord to the bottom of unit (Figure 1) (Mfg. No. 9200580 only).

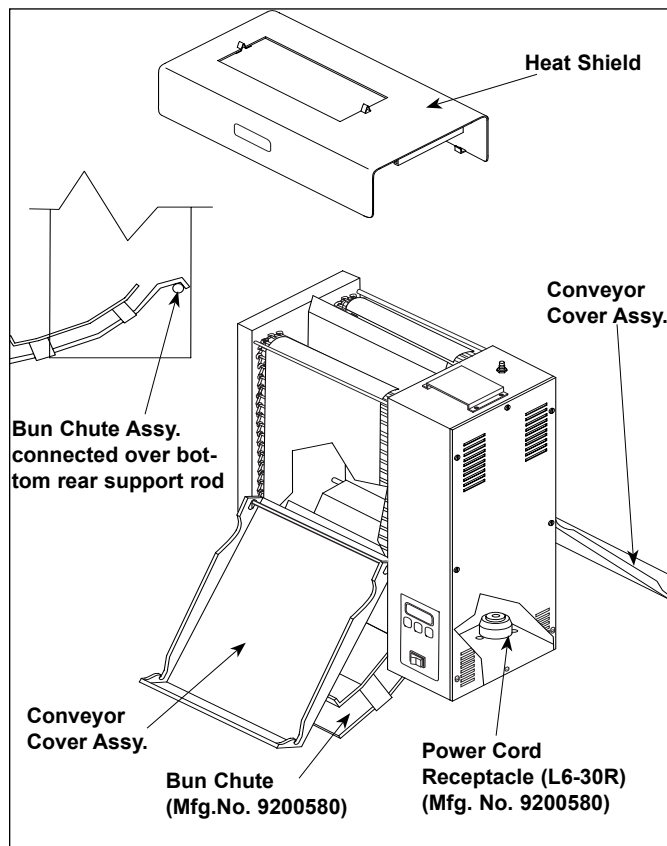


Figure 1. Installing Bun Chute

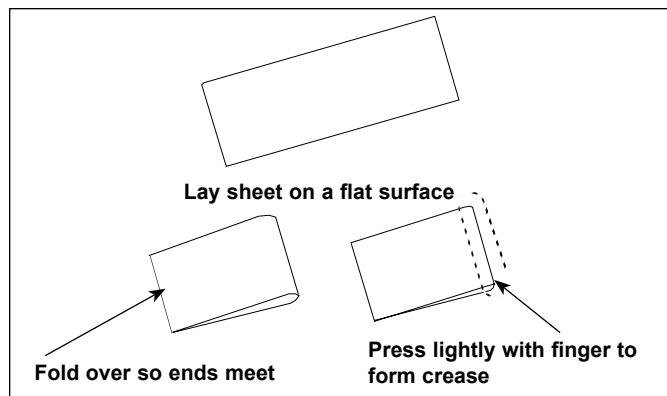


Figure 2. Folding Release Sheet

## Equipment Setup

When placing the toaster into service, pay attention to the following guidelines.

- Make sure power to the unit is off and the toaster is at room temperature.
- Do not block or cover any openings on the unit.
- Do not immerse cord or plug in water.
- Keep cord away from heated surfaces.
- Do not allow cord to hang over edge of table or counter.
- Connect the unit to the proper power supply. Refer to the specification plate for the proper voltage.

### **WARNING**

**ELECTRICAL SHOCK HAZARD. FAILURE TO FOLLOW THE INSTRUCTIONS IN THIS MANUAL COULD RESULT IN SERIOUS INJURY OR DEATH.**

- Electrical ground is required on this appliance.
- Do not modify the power supply cord plug. If it does not fit the outlet, have a proper outlet installed by a qualified electrician.
- Do not use an extension cord with this appliance.
- The toaster should be grounded according to local electrical codes to prevent the possibility of electrical shock. It requires a grounded receptacle with separate electrical lines, protected by fuses or circuit breaker of the proper rating.
- Check with a qualified electrician if you are in doubt as to whether the appliance is properly grounded.

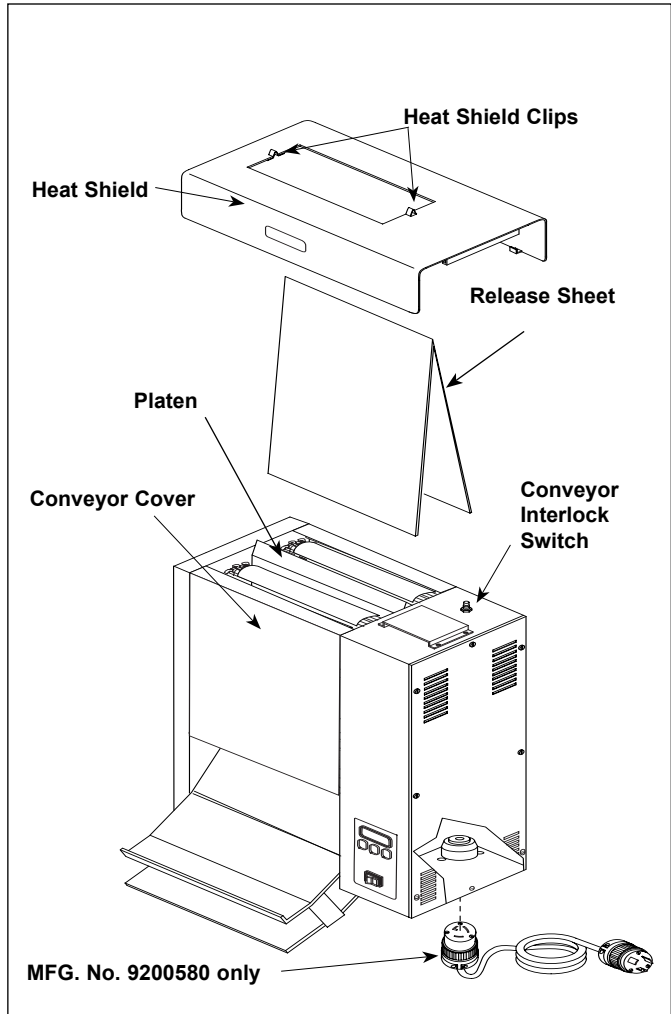


Figure 3. Installing Release Sheet

### **CAUTION**

All electrical connections must be in accordance with local electrical codes and any other applicable codes.

### **CAUTION**

Bread may burn. Therefore toasters must not be used near or below curtains or other combustible walls and materials. Failure to maintain safe operating distances may cause discoloration or combustion.

## OPERATION

### Operating Instructions

1. Set the bun adjustment controls (Figure 5) to desired setting.

**NOTE: Recommended settings are #2 (rear) for heel and #D (front) for crown.**

2. Turn the rocker switch (power on/off) to ON. (Figure 4). Allow 30 minutes warm-up time before proceeding.

**NOTE: The temperature display (Figure 4) will flash "LO" until preset operating temperature is reached. When the toaster approaches the preset temperature of 600°F (315°C), "USE" will appear in the temperature display and the unit is ready to toast buns. If "USE" does not appear in the window after warm-up period of approximately 30 minutes, contact your Roundup authorized service agency.**

3. Drop buns into toaster (Figure 4). **Cut sides of heel and crown must face each other (crown in front, heel in back).**
4. Toasted product will drop into the bun landing area (Figure 4).
5. Test at least 4 buns before putting toaster into service.
6. Turn the rocker switch (power on/off) OFF when finished toasting and proceed with the *daily cleaning* as outlined in the maintenance section of this manual.

### Temperature Adjustments

The VCT-20 uses a platen heater and two auxiliary heaters. The platen heater consists of a heating element built into the platen to toast the cut side of the bun. The two auxiliary heaters assist in providing additional heat to the buns. The first auxiliary heater is located between the conveyor in the front of the toaster. The second auxiliary heater is located between the conveyor and the rear of the unit.

### RECOMMENDED TEMPERATURES

Recommended temperature setting for the platen heater is 600°F (315°C).

Recommended temperature setting for the auxiliary heaters is 420°F (216°C).

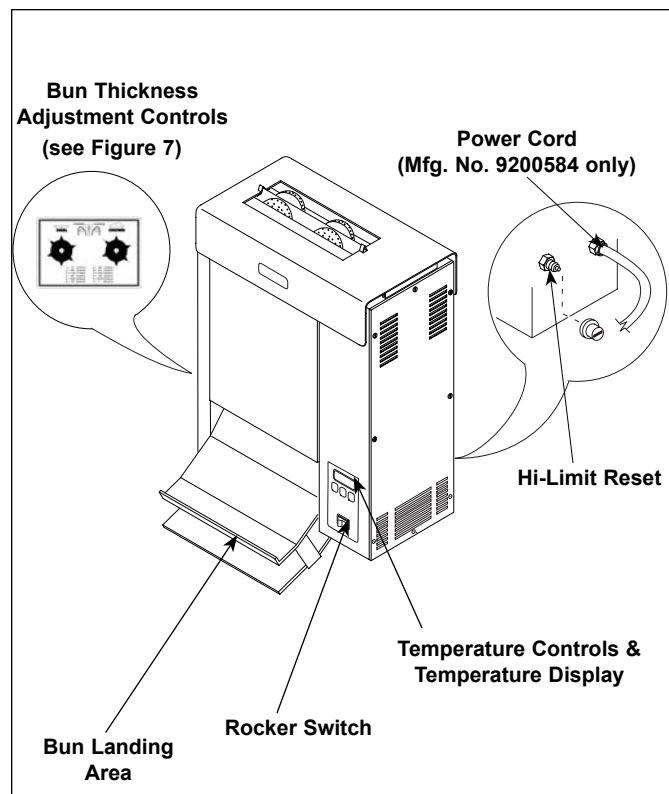


Figure 4. VCT-20 Toaster

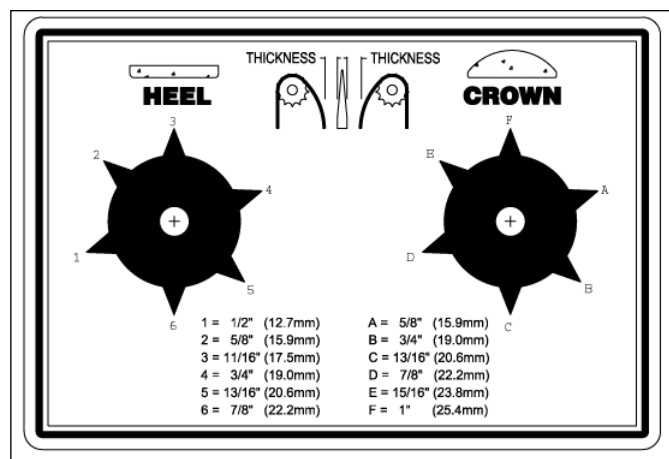


Figure 5. Bun Thickness Adjustment Controls

**NOTE: The toaster is tested and shipped with the heaters set at the above recommended temperatures.**

## TEMPERATURE CONTROL PANEL

**NOTE:** Setpoint Temperature refers to the desired temperature setting.

Pressing the TEMP UP key will display the current platen heater temperature providing the platen temperature is over 440°F (227°C).

Pressing the TEMP DOWN key will display the current auxiliary heaters temperature providing the auxiliary heaters temperature is over 360°F (182°C).

Pressing TEMP SCALE key will switch the temperature display between Fahrenheit (°F) and Celsius (°C).

## PLATEN HEATER TEMPERATURE ADJUSTMENT

1. Turn rocker switch (power on/off) to ON and wait for temperature display to finish the power up sequence (Figure 6).
2. Press and hold both TEMP UP and TEMP DOWN keys for over 1 second until the display flashes the setpoint temperature, then release (Figure 7).
3. Press the TEMP UP key to raise the setpoint temperature or press the TEMP DOWN key to lower the setpoint temperature. The setpoint temperature will adjust 1° every 0.1 seconds.
4. Release the key when the desired setpoint is displayed.

**NOTE:** If no change is made within 5 seconds, the display will revert back to the previous setpoint.

## AUXILIARY HEATER TEMPERATURE ADJUSTMENT

1. Turn rocker switch on and wait for temperature display to finish the power up sequence (Figure 6).
2. Press and hold both TEMP UP and TEMP SCALE keys for over 1 second until the display flashes the setpoint temperature, then release (Figure 8).
3. Press the TEMP UP key to raise the setpoint temperature or press the TEMP DOWN key to lower the setpoint temperature. The setpoint temperature will adjust 1° every 0.5 seconds. Continuing to depress the key for over two consecutive seconds will increase the adjustment speed 1° every 0.1 seconds.
4. Release the key when the desired setpoint is displayed.

**NOTE:** If no change is made within 5 seconds, the display will revert back to the previous setpoint.

## Safety Features

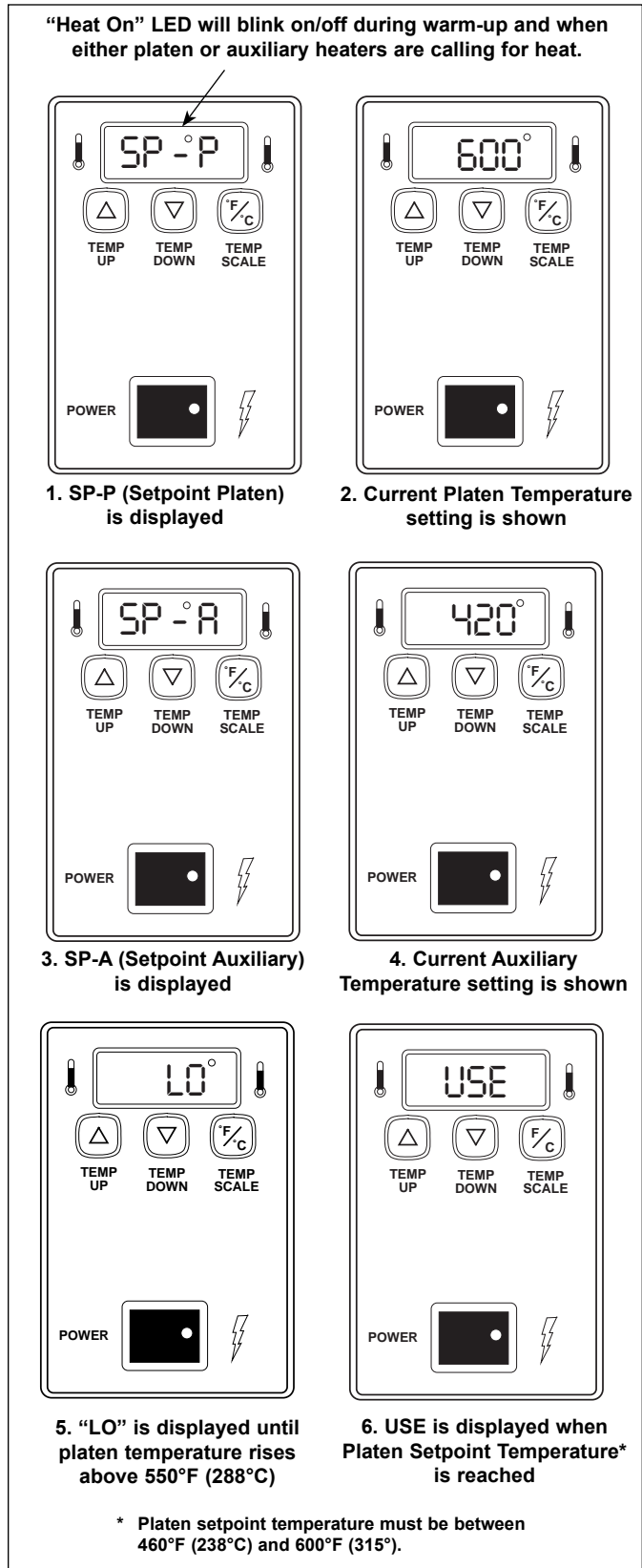
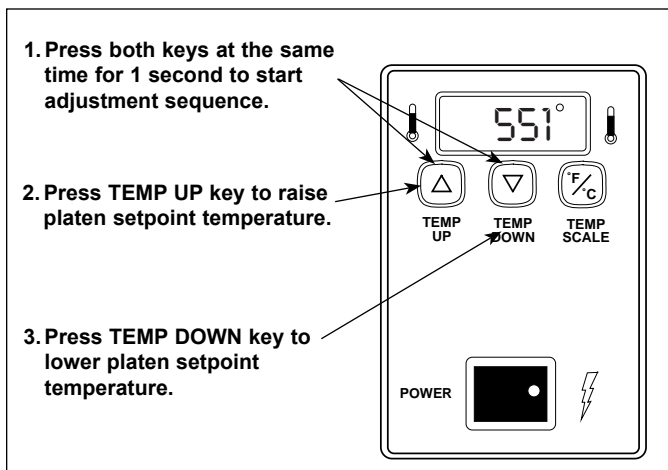
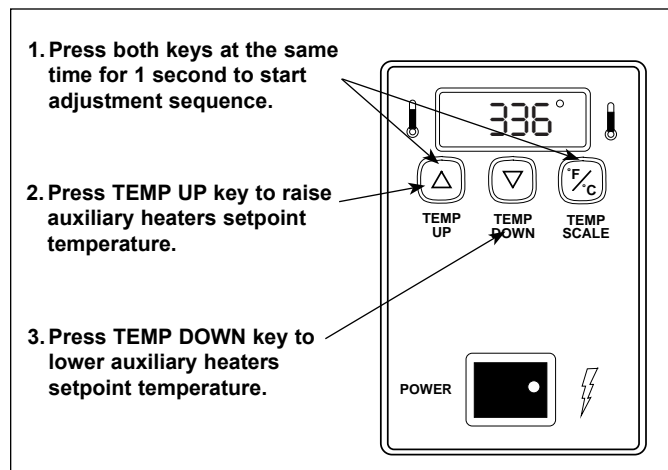


FIGURE 6. TEMPERATURE POWER UP SEQUENCE



**Figure 7. Adjusting Platen Heater Temperature Setpoint**



**Figure 8. Adjusting Auxiliary Heaters Temperature Setpoint**

## HI-LIMIT RESET BUTTON

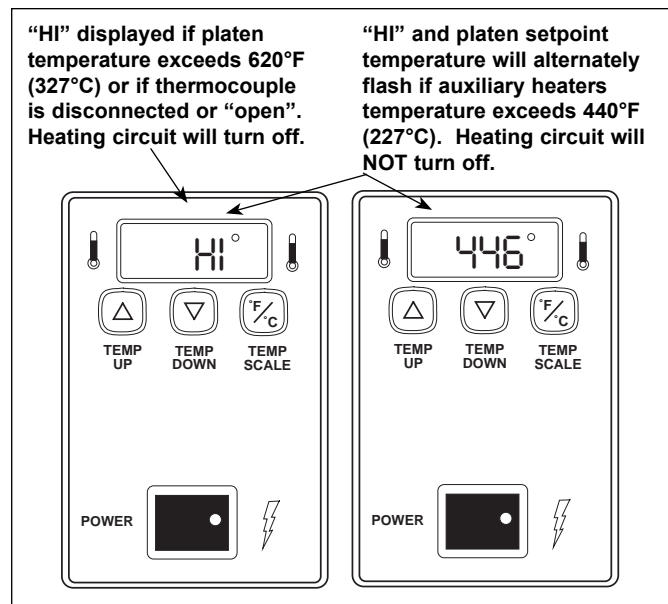
A hi-limit thermostat will turn off electrical power to the heater and control circuits if the unit overheats. To reset this thermostat, allow sufficient time (10-15 minutes) for the unit to cool down, then locate the reset button at the rear of the unit. Remove protective cap, depress the reset button, and reinstall protective cap (Figure 4).

**NOTE:** If the unit requires continuous resetting, contact your authorized service agency.

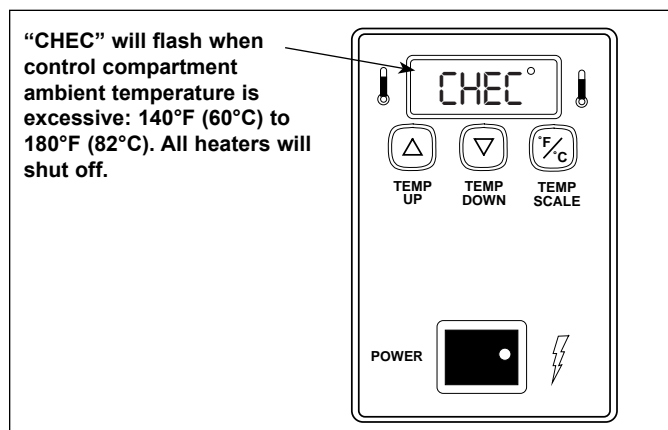
## FAULT MESSAGES

- If the platen thermocouple is disconnected or “open”, the display will read “HI” and the heating circuit will turn off (Figure 9). The platen thermocouple must be reattached or replaced.
- If the platen heater temperature exceeds 620°F (327°C) the display will read “HI” and the heating circuit will turn off (Figure 9). After the toaster has cooled down, the unit must be turned off, then back on to restart. If this condition repeats, contact your Roundup authorized service agency.
- If the auxiliary heating temperature exceeds 440°F (227°C) the display will alternately flash “HI” and the platen setpoint temperature (Figure 9). The heating circuit will not turn off. The toaster must be manually turned off and allowed to cool down. After the toaster has cooled down, the unit must be turned back on. If this condition repeats, contact your Roundup authorized service agency.

## FAULT MESSAGES (continued)



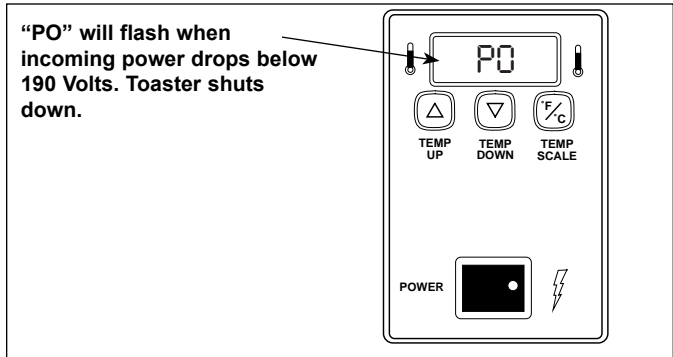
**Figure 9. “HI” Fault Message**



**Figure 10. “CHEC” Fault Message**

When this occurs, the temperature display will flash “CHEC” (Figure 10). To restart the unit, ambient temperature must drop to 140°F (60°C) and the unit must be turned off, then back on.

- If incoming power drops below 190 Volts, the toaster will shut down and the display will read “PO” (Figure 11). To reset, power supply must be over 190 Volts, then the unit must be turned off and back on.



**Figure 11. “PO” Fault Message**

## MAINTENANCE

### ⚠ WARNING ⚠

**Turn the unit off, disconnect the power source and allow the unit to cool down before performing any service or maintenance on the unit.**

### ⚠ CAUTION ⚠

**To prevent damage to the unit, do not use abrasive cleaners on the release sheet or belt wrap.**

### ⚠ CAUTION ⚠

**Failure to use release sheets may result in damage to the unit and loss of warranty coverage.**

## Daily

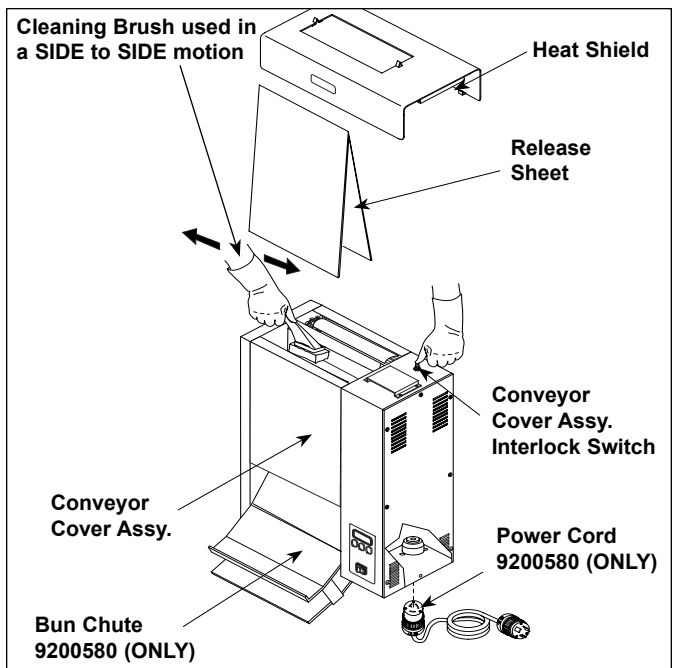
### CLEANING THE BLACK RELEASE SHEET, CONVEYOR BELT WRAPS AND TOASTER

#### Tools Required:

- Heat resistant gloves
- Clean, sanitized towels
- Scrub brush with Sanitizer Solution

1. Turn rocker switch (power on/off) to OFF, and allow the unit to cool sufficiently to handle.
2. Put on protective gloves. Remove heat shield, bun chute. (Figure 12).
3. Remove the release sheet. Wipe both sides of the release sheet with a **clean** towel and a warm sanitizer solution and allow to air dry.
4. Turn rocker switch (power on/off) to ON.
5. Depress and hold the activation button with one hand. Use your other hand, hold the scrub brush after dipping in sanitizer solution (Figure 12).

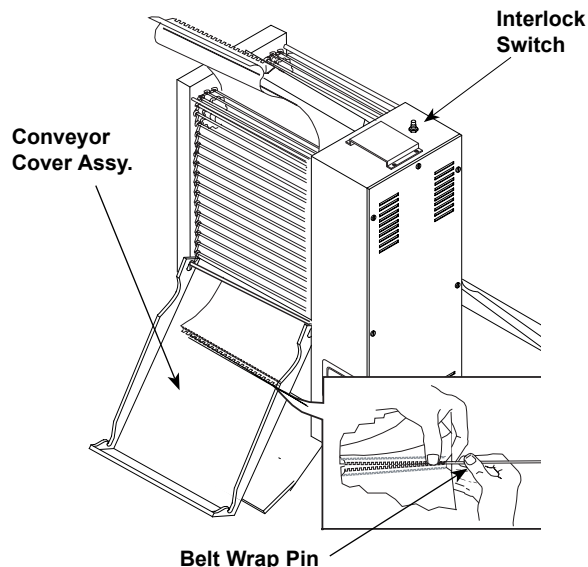
6. Use a back and forth motion covering the belt surface for 20 seconds per side (two rotations of the belt flap). Repeat on second belt (Figure 12)
7. Turn rocker switch (power on/off) to OFF and unplug the power cord.
8. Wipe down the outside of the toaster with a clean, damp, sanitized towel and allow to air dry.
9. Install the release sheet by draping it over both sides of the platen with the crease centered directly on the platen.
10. Install bun chute so hooks are installed over the lower rear yellow support rod. Install the heat shield aligning clips over platen (Figure 3).



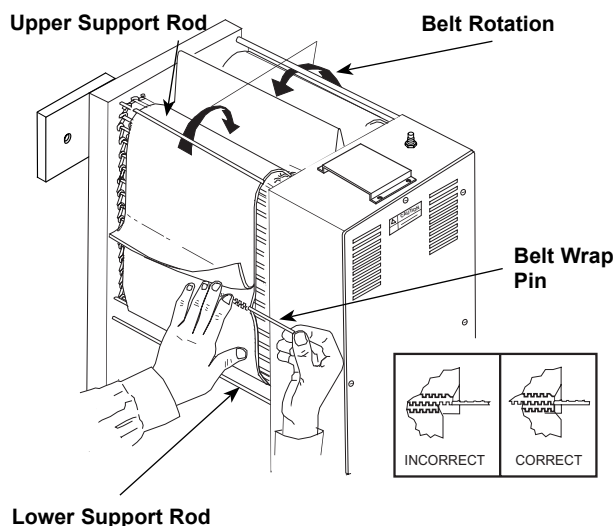
**Figure 12. Components**

## Replacing Belt Wraps

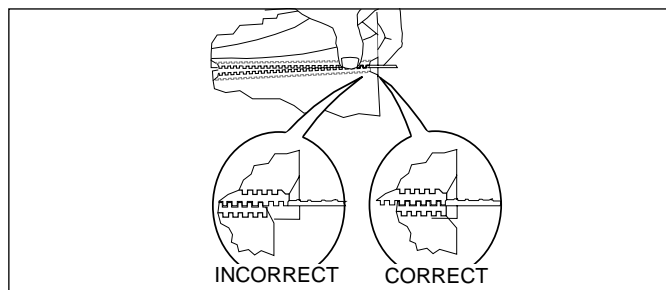
1. Turn rocker switch (power on/off) to OFF, unplug the power cord and allow the unit to cool down before proceeding.
2. Remove the heat shield, Open the front conveyor cover, rear conveyor cover by lifting the covers in an upward motion then tilting the tops away from the unit. Remove the bun chute and release sheet (Figure 12).
3. Turn both bun compression control knobs to "6" (Figure 5).
4. Move belt wraps until connecting hinge is exposed and centered, then remove both front and rear belt wraps (Figure 13).
5. The belt wraps must be installed properly in order to work correctly. Install the belt wraps as shown in Figures 14 & 15.
6. Install a new release sheet (Figure 12).
7. Close the front conveyor cover and rear conveyor covers by lifting the covers and gently pushing upward and into the toaster until the covers latch onto the yellow support rods.(Figure 12).
8. Install bun chute and heat shield (Figure 12).



**Figure 13. Removing Belt Wrap**



**Figure 14. Installing Belt Wrap**



**Figure 15. Aligning Belt Teeth**

### ⚠ CAUTION ⚠

Be sure conveyor belt wrap ends are aligned as shown in Figure 15 or damage to the conveyor belt wrap will occur.

### ⚠ CAUTION ⚠

Be sure conveyor belt wrap is positioned UNDER the upper and lower yellow support rods or damage to the unit will occur.

## Stainless Steel Conveyor Belts

### ⚠ WARNING ⚠

Turn the unit off, disconnect the power source and allow the unit to cool down before performing any service or maintenance on the unit.

### SERVICING CONVEYOR BELTS

After a period of time, the conveyor links will wear and the conveyor belt will stretch, eventually causing buns to stick. This is easily remedied by removing one or more conveyor links from each side of the belt. There are four 1/2" small links on each side of the conveyor belt. The rest of the links are large, 3/4" long (Figure 16).

### REMOVE CONVEYOR BELTS

1. Perform steps 1 - 4 under *Replacing Belt Wraps* on the previous page.
2. Disconnect the conveyor belt by squeezing any two links together and unhooking both ends of one link (Figure 16).
3. To shorten a stretched conveyor belt, remove one 1/2" link from the belt.
4. Reassemble the belt to the sprockets as described below.

**NOTE:** If the belt is too short to be reassembled, remove an additional 1/2" small link and install a 3/4" large link. This will shorten the belt 1/4" overall. See Figure 16 for links part numbers.

### REPLACING CONVEYOR BELTS

1. Remove old conveyor belt as described previously on this page.
2. Place replacement conveyor belt on top sprockets. Check for correct positioning (Figure 16).

**NOTE:** Install conveyor belt so that the ends of the hooks are facing down (Figure 16).

3. Wrap conveyor belt around lower sprockets and connect by hooking both ends of the belt back together.
4. Perform steps 5 - 11 under *Replacing Belt Wraps* (previous page).

**NOTE:** Make sure the conveyor belt is under the upper support rod and over the lower support rod.

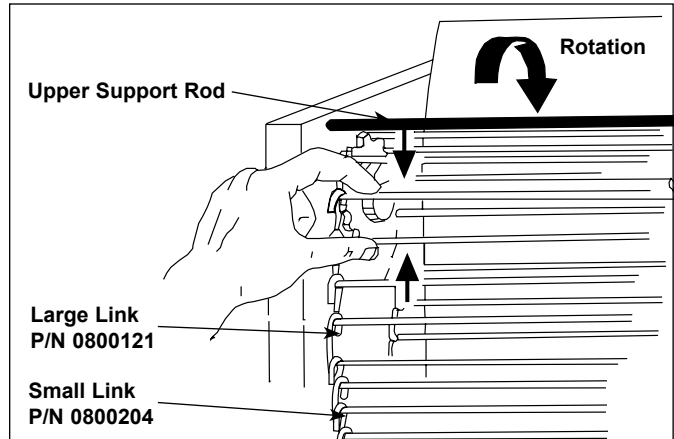


Figure 16. Removing Conveyor Belt

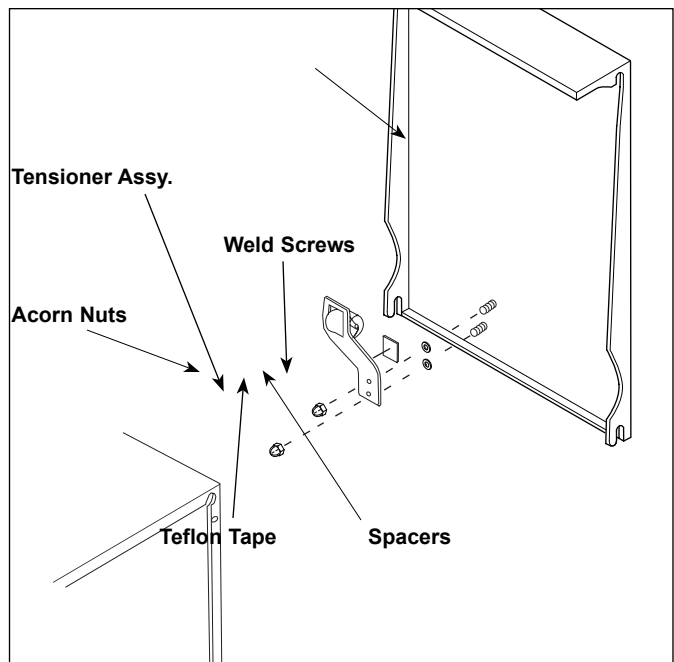


Figure 17. Replacing Roller Tensioner Assy.

### Replacing Roller Tensioners

1. Remove acorn nuts (Figure 17).
2. Remove old roller tensioner assy.
3. Replace tensioner assy. and reassemble.
4. Make sure the spacers are placed inside the tensioner arm. The spacers are smaller than the holes to allow the tensioner to pivot freely.

## TROUBLESHOOTING

### ⚠ WARNING ⚠

**To avoid possible personal injury and/or damage to the unit, inspection, test and repair of electrical equipment should be performed by qualified service personnel. The unit should be unplugged when servicing, except when electrical tests are required. Use extreme care during electrical circuit tests. Live circuits will be exposed.**

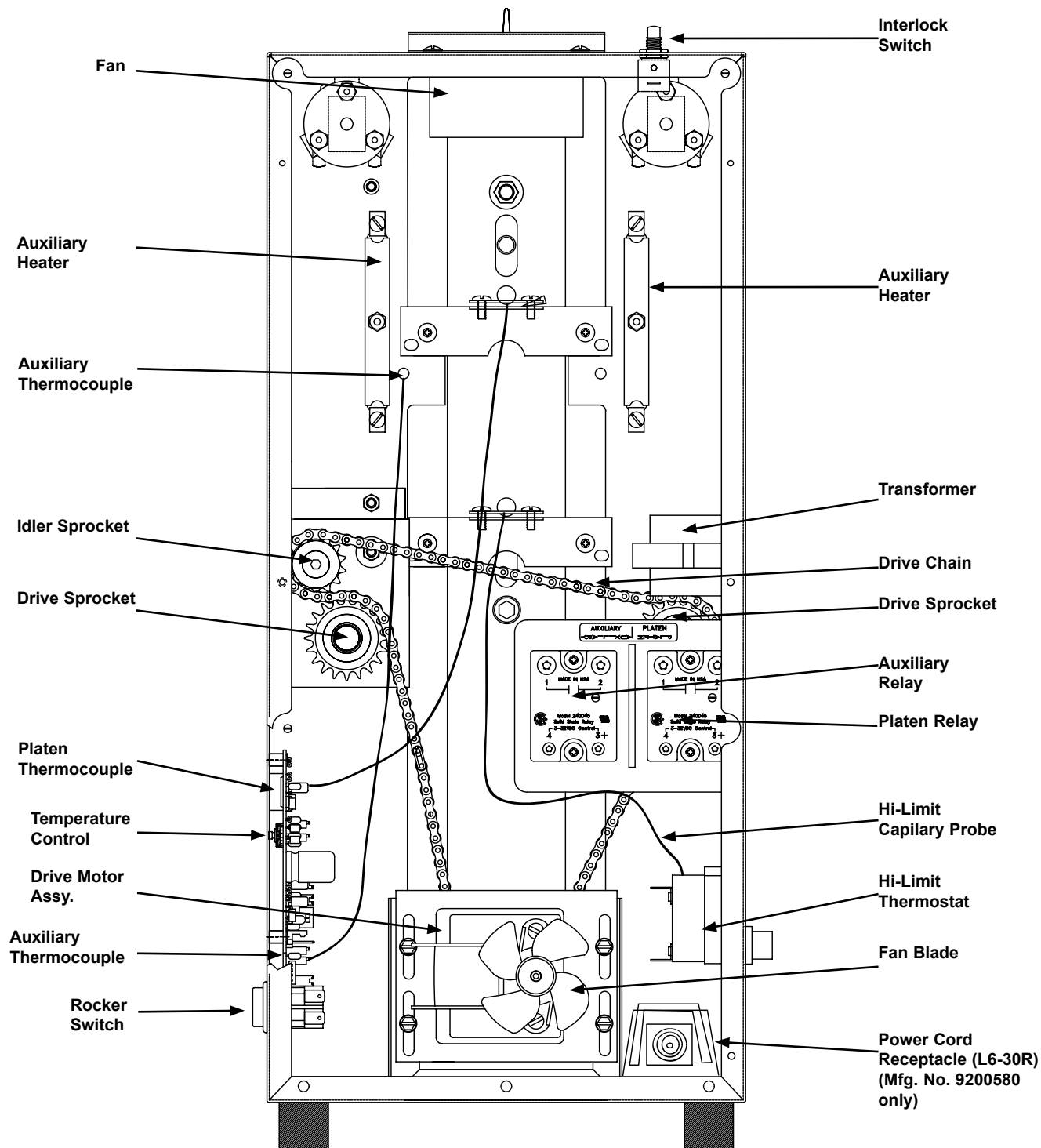
| <b>Problem</b>          | <b>Possible Cause</b>   | <b>Corrective Action</b>  |
|-------------------------|---|---|
| No Display.             | Unit not plugged in.<br>Circuit breakers tripped.<br>Hi-Limit thermostat tripped. | Plug the unit into the proper electrical outlet.<br>Reset the circuit breakers.<br>Reset the Hi-Limit thermostat.   |
| Conveyor does not turn. | Compression settings incorrect.   | Set HEEL to 2 and CROWN to D.   |
|                         | Safety Interlock Switch is not activating.  | Cover is bent. Replace with P/N 0011491.<br>Switch is broken. Contact your Authorized Service Agent.  |
|                         | Roller Tensioner bent or missing.   | Adjust Roller Tensioner -13/16" (2.1 cm) or the height of a U.S. Nickel coin - from the bottom of the roller to the inner cover.<br>Install new Roller Tensioner (P/N 7000186). |
|                         | Conveyor Belt Chain stretched.  | Refer to the section titled Servicing Conveyor Belts in this manual.  |
|                         | Motor drive chain is off sprocket.  | Install chain and lubricate with CRC 3-36.  |
|                         | Motor does not operate.   | Unplug toaster. Check all electrical connections. Replace motor - contact your maintenance person or Authorized Service Agency.   |
| Buns are sticking       | Compression settings incorrect.   | Set HEEL to 2 and Crown to D.   |
|                         | Belt wraps dirty or damaged.  | Clean Belt Wraps as described in the Maintenance section of this manual.<br>Inspect for damage (tears, hardened or brittle) and replace if necessary.                           |
|                         | Release Sheet dirty or damaged.   | Clean Release Sheet as described in the Maintenance section of this manual.<br>Replace if scratched, torn, or has holes.<br>Repleace with P/N 7000249.                          |
|                         | Roller Tensioner missing or out of position.                                      | Adjust Roller Tensioner -13/16" (2.1 cm) or the height of a U.S. Nickel coin - from the bottom of the roller to the inner cover.<br>Install new Roller Tensioner (P/N 7000186). |
|                         | Conveyor Belt not turning.  | Remove Heat Shield, turn the power ON, and depress the Safety Interlock Switch button at the top of the unit. Verify drive mechanism is functioning.                            |
|                         | Conveyor Chains turn but Belt Wrap does not.                                      | Refer to the Maintenance section of this manual.  |

## TROUBLESHOOTING (continued)

| Problem  | Possible Cause  | Corrective Action   |
|--|---|---|
| Buns are sticking (continued).   | Conveyor Belt not turning,<br>Conveyor Chain not turning. | Verify Motor Chain is attached. Contact your maintenance person or Authorized Service Agency.   |
| Buns are not toasting properly.  | Compression settings incorrect.                           | Set HEEL to 2 and CROWN to D.   |
|  | Temperature not set properly.                             | Verify the Platen setting is at 600° F (320° C) and the auxiliary setting is at 420° F (216° C). Refer to the instructions in the Operations section of this manual.  |
|  | Release Sheet needs Cleaning.                             | Clean Release Sheet as described in the Maintenance section of this manual. Replace if scratched, torn, or has holes. Replace with P/N 7000249.   |
|  | Conveyor Belt Wraps need cleaning.                        | Clean Belt Wraps as described in the Maintenance section of this manual.  |
|  | Buns Cut improperly.                                      | Contact your Bun Supplier.  |
| Temperature display reads "LOW."   | Platen temperature is below 420° F (216° C).              | Allow the unit to warm up for 30 minutes and recheck the display. Contact your maintenance person or Authorized Service Agency.   |
| Temperature Display flashes "PO."  | Unit is receiving LOW voltage, below 190 volts).          | Turn the Rocker Switch (power On/Off button) to OFF, then ON. If the display shows "PO" again, check the power cord and plug receptacle for damage. Reset circuit breakers located at the store's power panels. Contact your maintenance person or Authorized Service Agency. |
| Crown and/or Heel must be forced into toaster.                                   | Heat Shield improperly installed or damaged.              | Remove and reposition the Heat Shield or replace it.  |
|  | Conveyor Belt Wrap not tacky (sticky).                    | Clean Belt Wraps as described in the Maintenance section of this manual. Inspect for damage (tears, hardened or brittle) and replace if necessary.  |
|  | Crown and/or Heel not properly inserted into toaster.     | Buns must be inserted with the cut sides facing each other. <b>Crown in front, Heel in rear.</b>  |
|  | Release Sheet is sticky and /or not smooth.               | Clean Release Sheet as described in the Maintenance section of this manual. Replace if scratched, torn, or has holes. Replace with P/N 7000249.   |
| Conveyor Belt Wrap does not fit, is difficult to install, or is not long enough. | Conveyor Belt Wrap installed improperly.                  | Install belt wraps as described in the Maintenance section of this manual.  |
|  | Conveyor Belt Wrap is damaged.                            | Replace with P/N 7000192.   |

**PARTS IDENTIFICATION**

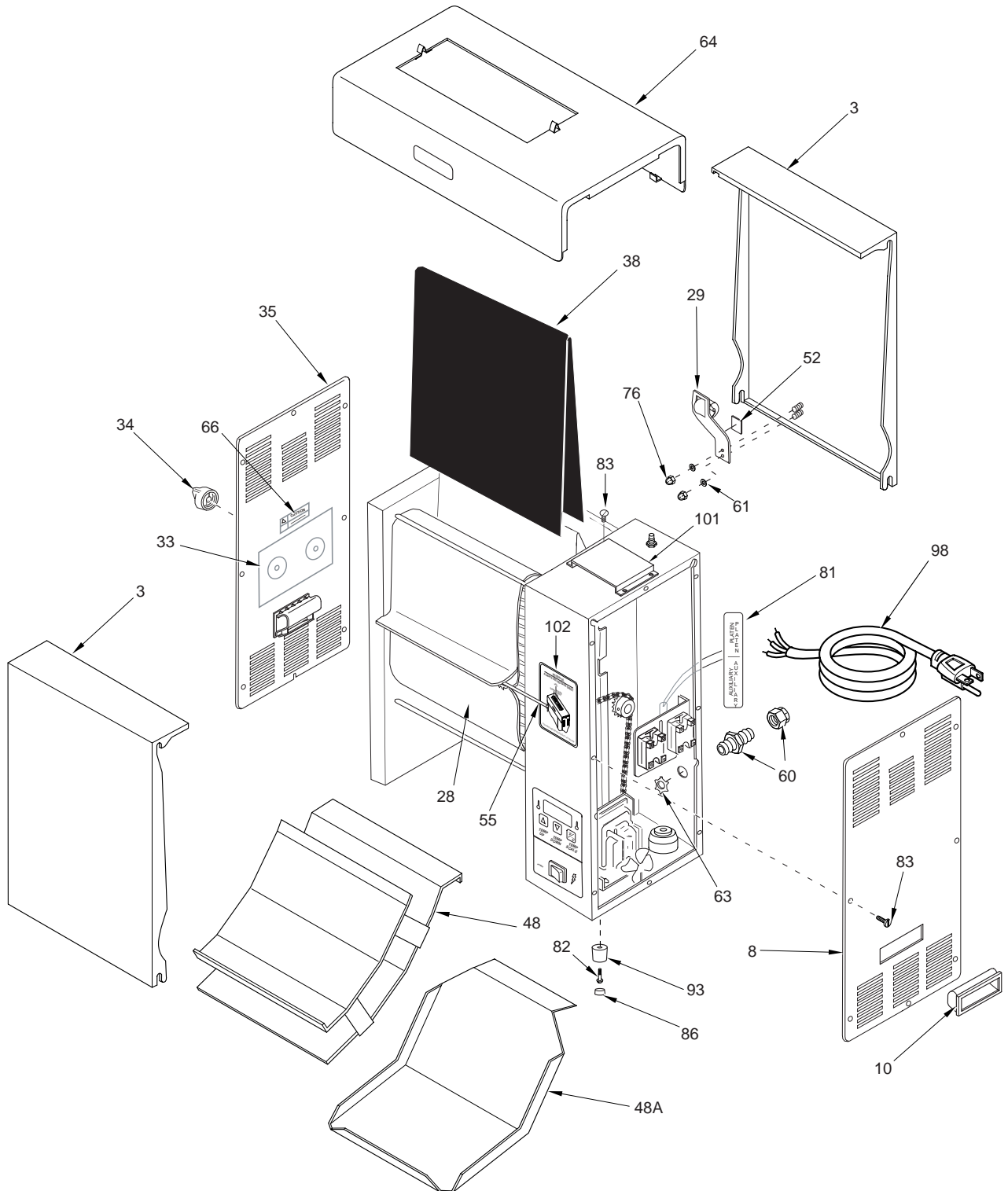
**Parts Identification**



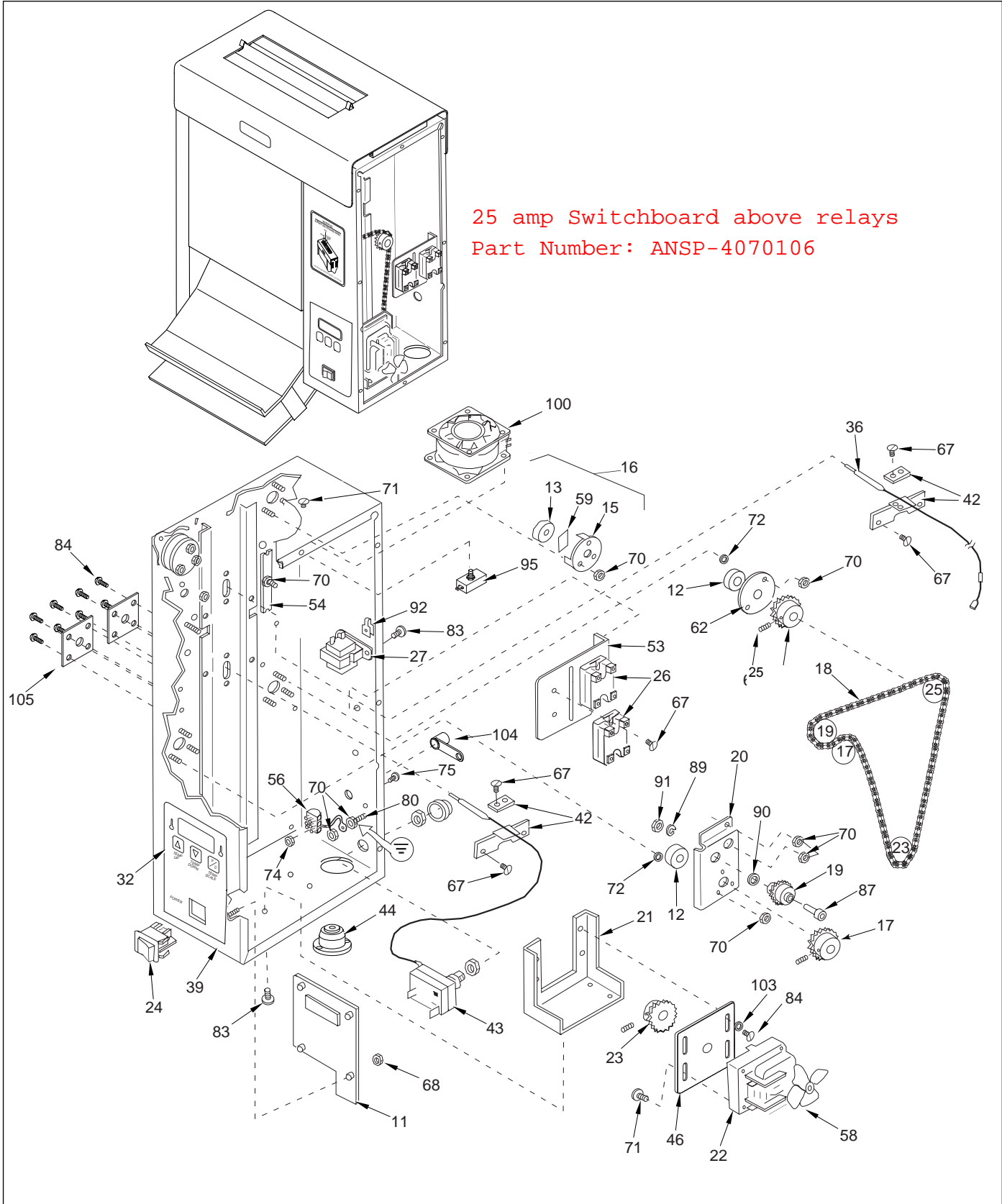
## REPLACEMENT PARTS

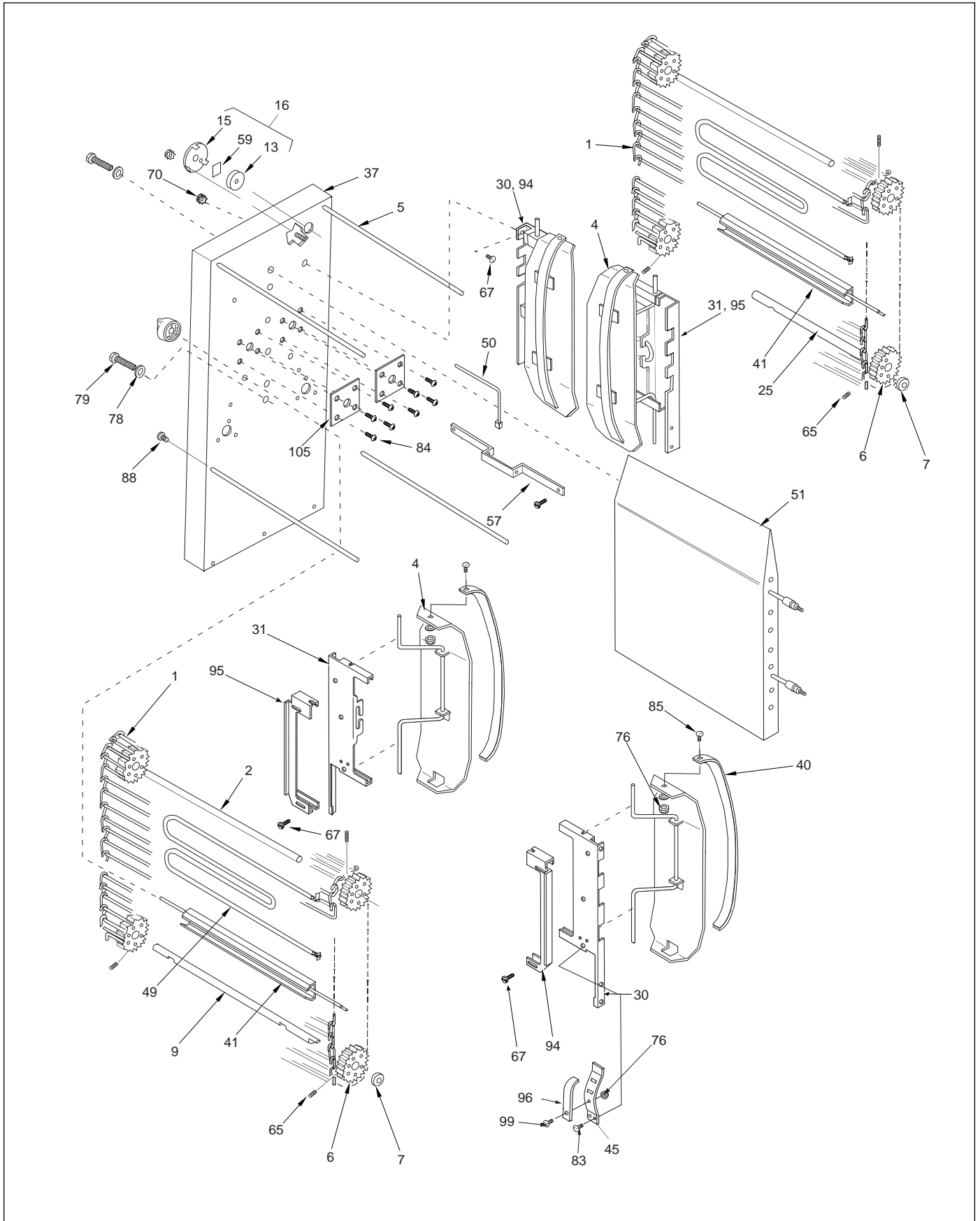
| Item | Part No. | Description   | Qty. | Item | Part No. | Description                      | Qty. |
|------|----------|---|------|------|----------|----------------------------------|------|
| 1    | 0011266  | Conveyor Belt   | 2    | 50   | 7000165  | Auxiliary Thermocouple Kit       | 1    |
|      | 0800204  | 1/2" Pitch Link, Small                                    | 2    | 51   | 7000200  | Platen (240 VOLT)                | 1    |
|      | 0800121  | 3/4" Pitch Link, Large                                    | 38   | 52   | 2100252  | Teflon Tape                      | 4    |
| 2    | 2150117  | Idler Shaft   | 2    | 53   | 0503359  | Bracket, Relay                   | 1    |
| 3    | 0011329  | Conveyor Cover Assy.                                      | 2    | 54   | 0503150  | Heater Clip                      | 2    |
| 4    | 0010475  | Tensioner Assy. (Incl. #40, 76, 85)                       | 4    | 55   | 303P125* | Hinge Pin, Belt Wrap             | 2    |
| 5    | 0800332  | Rod, Conveyor Cover                                       | 4    | 56   | 4060355  | Terminal Block (9200584 Only)    | 1    |
| 6    | 2150190  | Sprocket  | 8    | 57   | 0503533  | Bracket, Auxiliary Thermocouple  | 1    |
| 7    | 7000199* | Spacer Kit  | 2    | 58   | 4000170  | Fan Blade, Motor                 | 1    |
| 8    | 0011444  | Control Housing Cover Assy.                               | 1    | 59   | 2100256  | Teflon Tape                      | 8    |
| 9    | 2150118  | Drive Shaft   | 2    | 60   | 0400315  | Strain Relief (9200584 Only)     | 1    |
| 10   | 2100212  | Handle  | 2    | 61   | 0502199  | Spacer                           | 4    |
| 11   | 7000241  | Control Board   | 1    | 62   | 0500464  | Retainer, Bearing                | 1    |
| 12   | 2150158  | Ball Bearing  | 2    | 63   | 0400138  | Locknut, 1/2" (9200584 Only)     | 1    |
| 13   | 2150186  | Teflon Bearing  | 6    | 64   | 0011528  | Heat Shield Assy.                | 1    |
| 15   | 0503376  | Bearing Retainer  | 6    | 65   | 325P163* | Setscrew, 1/4-28 x 5/16"         | 8    |
| 16   | 7000167  | Bearing & Retainer Kit<br>(Includes #13,14,15 & 59)       | 1    | 66   | 100P864* | Label, Caution Hot               | 1    |
| 17   | 2150193  | Drive Sprocket, Front                                     | 1    | 67   | 308P115* | Screw, #8-32 x 3/8" (10 mm)      | 2    |
| 18   | 2150187  | Drive Chain   | 1    | 68   | 304P105* | Nut, #4-40, "KEPS"               | 4    |
| 19   | 0011299  | Idler Sprocket & Bearing                                  | 1    | 69   | 406P107* | Cable Tie                        | 1    |
| 20   | 0501232  | Bracket, Idler Sprocket                                   | 1    | 70   | 308P143* | Nut, #8-32, "KEPS"               | 6    |
| 21   | 0503589  | Bracket, Motor Mounting                                   | 1    | 71   | 310P154* | Screw, #10-32 x 3/8"             | 4    |
| 22   | 7000240  | Drive Motor Kit, Dual Frequency<br>50/60 Hz (Incl. #58)   | 1    | 72   | 310P140* | Washer, #10                      | 6    |
| 23   | 2150110  | Motor Sprocket (#s 9200580 &<br>9200854)                  | 1    | 73   | 308P101* | Nut, #8-32                       | 3    |
|      | 2150177  | Motor Sprocket (#9200582)                                 | 1    | 74   | 306P101* | Nut, Hex, #6-32                  | 2    |
| 24   | 4010137  | Rocker Switch, On/Off (250 VAC)                           | 1    | 75   | 306P123* | Screw, #6-32 x 7/8"              | 2    |
| 25   | 2150109  | Drive Sprocket (Rear)                                     | 1    | 76   | 308P145* | Nut, Hex Acorn, #8-32            | 14   |
| 26   | 405K125  | Relay, Solid State  | 2    | 77   | 100P900* | Label, Service                   | 1    |
| 27   | 4010187  | Transformer   | 1    | 78   | 325P104* | Washer, 1/4"                     | 4    |
| 28   | 7000192  | Conveyor Belt Wrap (Pack of 2)                            | 1    | 79   | 325P109* | Screw, 1/4-20 x 1/2"             | 4    |
| 29   | 7000186  | Roller Tensioner Assy. (Pack of 2)                        | 1    | 80   | 308P124* | Screw, 1-Way, #8-32 x 1/2"       | 1    |
| 30   | 0503496  | Tensioner Bracket, Right                                  | 2    | 81   | 10P1022* | Label, Heaters                   | 1    |
| 31   | 0503497  | Tensioner Bracket, Left                                   | 2    | 82   | 310P136* | Screw, #10-32 x 1-1/4"           | 4    |
| 32   | 1001037  | Label, Control  | 1    | 84   | 308P157* | Screw, Tap, #8-32 x 3/8"         | 40   |
| 33   | 1001069  | Label, Dial Compression                                   | 1    | 85   | 308P183* | Screw, Hex Hd., #8-32 x 3/8"     | 20   |
| 34   | 2100253  | Knob, Control   | 2    | 86   | 218P145* | Cover, Leg, Bumper               | 4    |
| 35   | 0011445  | End Housing Cover Assy.                                   | 1    | 87   | 331P103* | Shoulder Bolt, 5/16-18 x 1"      | 1    |
| 36   | 4050214  | Thermocouple Assy.  | 1    | 88   | 306P105* | Screw, #6-32 x 1/2"              | 8    |
| 37   | 0021170  | Weldment, End Housing                                     | 1    | 89   | 331P106* | Lockwasher, 5/16"                | 1    |
| 38   | 7000249  | Release Sheet (Pack of 3)                                 | -    | 90   | 212P118* | Flat Washer, 5/16"               | 1    |
|      | 7000250  | Release Sheet (Pack of 10)                                | -    | 91   | 331P101* | Nut, Hex, 5/16 x 18"             | 1    |
| 39   | 0021245  | Control Housing   | 1    | 92   | 300P102* | Nut, Tinnerman                   | 2    |
|      | 0021169  | Control Housing (9200584 Only)                            | 1    | 93   | 210P230  | Bumper, Recess Leg, 1"           | 4    |
| 40   | 7000121  | Slide Rail Kit (Includes 2<br>slide rails for tensioners) | 2    | 94   | 0503495  | Retainer, Tensioner Bracket, RH  | 1    |
| 41   | 0021207  | Conveyor Cam  | 2    | 95   | 0503507  | Retainer, Tensioner Bracket, LH  | 1    |
| 42   | 7000176  | Thermocouple Retainer Kit                                 | 2    | 96   | 2100259  | Slide Bar                        | 4    |
| 43   | 4030332  | High Limit Thermostat                                     | 1    | 97   | 4010107  | Interlock Switch                 | 1    |
| 44   | 4060369  | Flanged Inlet, Male                                       | 1    | 98   | 0700479  | Power Cord Assy. (9200584 Only)  | 1    |
| 45   | 0503455  | Tension Spring, Inner                                     | 4    |      | 0700588  | Power Cord Assy. (#9200582 Only) | 1    |
| 46   | 0503590  | Bracket, Motor  | 1    | 99   | 306P104* | Screw, #6-32 x 1/4"              | 6    |
| 47   | 0700580  | Wire Set (not shown)                                      | 1    | 100  | 4000138  | Fan                              | 1    |
| 48   | 0021228  | Bun Chute   | 1    | 101  | 0503115  | Duct, Fan                        | 1    |
| 48A  | 0503385  | Bun Chute (9200584/9200582 Only)                          | 1    | 102  | 1001056  | Label, Crown & Heel              | 1    |
| 49   | 4030327  | Auxiliary Heater, Air, 700 Watts                          | 2    | 103  | 2120147* | Leg Spacers                      | 4    |
|      |          |   |      | 104  | 4060374  | Grounding Lug                    | 1    |
|      |          |   |      | 105  | 0503858  | Cam Locking Plate                | 4    |

\* Only available in packages of 10.

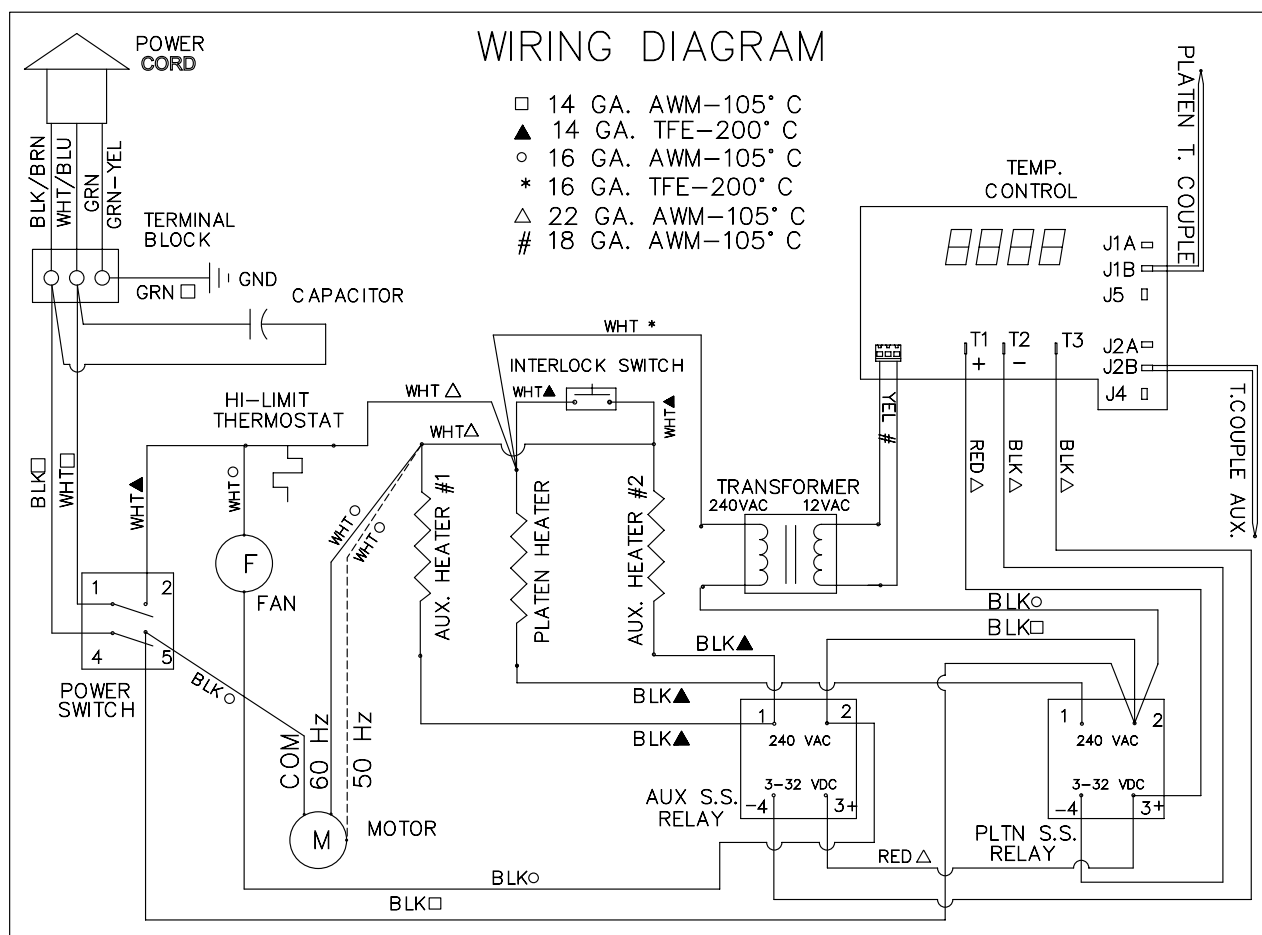


## REPLACEMENT PARTS





## Pictorial Wiring Diagram



## LIMITED WARRANTY

Equipment manufactured by Roundup Food Equipment Division of A.J. Antunes & Co. has been constructed of the finest materials available and manufactured to high quality standards. These units are warranted to be free from mechanical and electrical defects for a period of two years from date of purchase or 30 months from shipment from factory, whichever occurs first, under normal use and service, and when installed in accordance with manufacturer's recommendations. To insure continued proper operation of the units, follow the maintenance procedure outlined in the Owner's Manual. During the first 12 months, all parts and non-overtime labor and travel expenses within a 50 mile/80 km not (100 mile/160 km, 2 hour round trip) radius of the nearest Authorized Service Center are covered; during the 13<sup>th</sup> to 24<sup>th</sup> month, parts only are covered (no labor or travel expense).

1. This warranty does not cover cost of installation, defects caused by improper storage or handling prior to placing of the Equipment. This warranty does not include overtime charges or work done by unauthorized service agencies or personnel. This warranty does not cover normal maintenance, calibration, or regular adjustments as specified in operating and maintenance instructions of this manual, and/or labor involved in moving adjacent objects to gain access to the equipment. This warranty does not cover consumable items such as platen release sheet and conveyor belt wraps. Travel time and mileage in excess of 50 miles from the nearest authorized service agency is not covered under this warranty.
2. Roundup reserves the right to make changes in design or add any improvements on any product. The right is always reserved to modify equipment because of factors beyond our control and government regulations. Changes to update equipment do not constitute a warranty charge.
3. **If shipment is damaged in transit, the purchaser should make a claim directly upon the carrier. Careful inspection should be made of the shipment as soon as it arrives and visible damage should be noted upon the carrier's receipt. Damage should be reported to the carrier. This damage is not covered under this warranty.**
4. Warranty charges do not include freight or foreign, excise, municipal or other sales or use taxes. All such freight and taxes are the responsibility of the purchaser.
5. THIS WARRANTY IS EXCLUSIVE AND IS IN LIEU OF ALL OTHER WARRANTIES, EXPRESSED OR IMPLIED, INCLUDING ANY IMPLIED WARRANTY OR MERCHANTABILITY OR FITNESS FOR A PARTICULAR PURPOSE, EACH OF WHICH IS HEREBY EXPRESSLY DISCLAIMED. THE REMEDIES DESCRIBED ABOVE ARE EXCLUSIVE AND IN NO EVENT SHALL ROUNDUP BE LIABLE FOR SPECIAL CONSEQUENTIAL OR INCIDENTAL DAMAGES FOR THE BREACH OR DELAY IN PERFORMANCE OF THIS WARRANTY.



# A.J. ANTUNES & CO.

180 Kehoe Blvd. • Carol Stream, Illinois 60188  
Telephone (630) 784-1000 • FAX (630) 784-1650 • 1-877-392-7854  
[www.ajantunes.com](http://www.ajantunes.com)