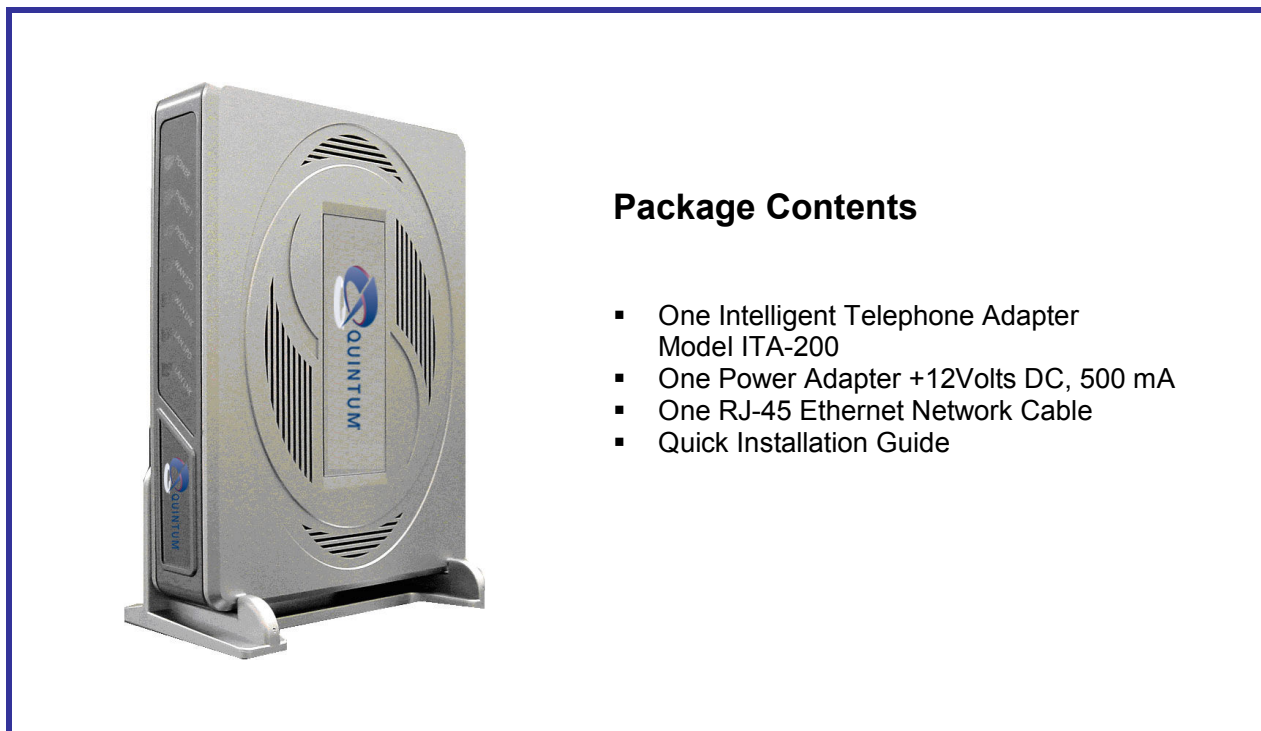




This Quick Installation is meant to help you to install the product easily and quickly. For detailed instructions on installation, configuration, and further setup options, please consult the Technical Reference Manual.

Please read warnings before installing the ITA-200



***2 FXS Ports Intelligent Telephone Adapter
With Integrated Router
Model ITA-200***

Quick Installation Guide

1 Connecting the ITA-200

A Before you begin, make sure that you have the setup information for your specific type of internet connection.

B Make sure that all of your network's hardware is powered off, including PCs, ITA-200, and Cable or ADSL modem.

C Connect one end of the included Ethernet network cable to the **WAN** port, and the other end to the Ethernet port of the cable/ADSL modem or Ethernet connection.

D Connect one end of another Ethernet network cable to the **LAN** port of the device, and the other end to the Ethernet adapter on your PC.

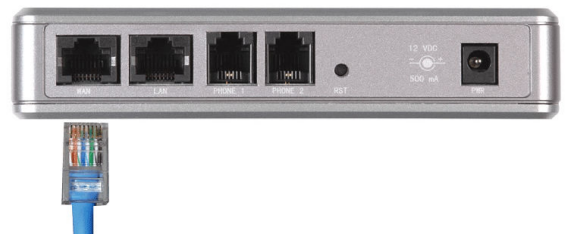
E Connect two analogue telephone sets to the **Phone** ports 1 & 2.

F Connect the AC Power Adapter to the **Power** and the other end into an electrical outlet.

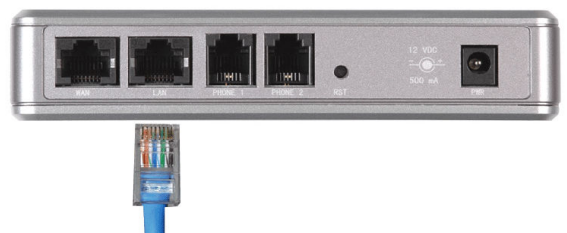
G Power-Up Sequence

- Turn on your computer
- Power up the ITA-200
- Power up your cable or ADSL modem, router

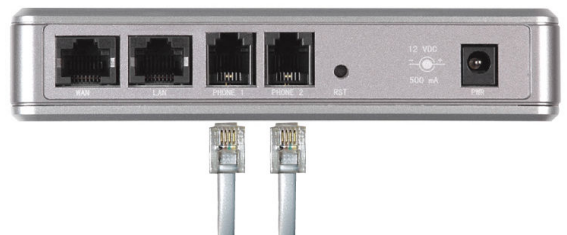
C



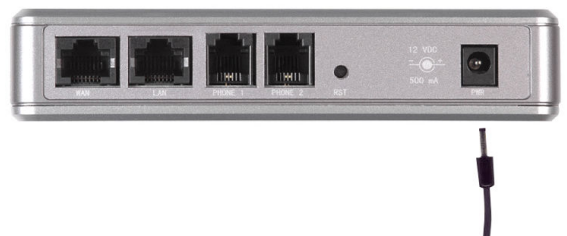
D



E



F



Important: Make sure you use the power adapter that is supplied with the ITA-200. Using a different power adapter could damage the ITA-200.

2 Configuring the ITA-200

These instructions will show you how to configure the ITA-200.

A Open the web browser in your PC. Enter `http://192.168.10.1` in its Address field. Press the Enter key.

B A login screen will appear. Enter the default Username, **admin** and Password, **admin**, in lowercase letters in the Username and Password fields. (For added security, you should later set a new password in the Maintenance tab). Then click the Login button.

Information page will appear, go to the **WAN/ LAN Configuration tab**.

C For the WAN/ LAN Configuration, three connections types are offered through the drop-down menu. Each setup screen and available features will differ depending on which connection type you select.

Internet Configuration Type

Automatic Configuration – DHCP: If you are connecting through DHCP or a dynamic IP address from your ISP, keep this default setting. (C1)

Static: If your ISP assigns you a static IP address, select Static IP from the drop-down menu. Complete the Internet IP address, Subnet Mask, Gateway and DNS fields. You need to enter at least one DNS address. (C2)

PPPoE: if you are connecting through PPPoE, select PPPoE from the drop-down menu. Complete the Username and Password fields. (C3)

A Address 

B Intelligent Telephone Adaptor
ITA-200

Username:

Password:



Quintum Intelligent Telephone Adaptor V1.0
Copyright (c) 2004-2006 Quintum Technologies, Inc. All Rights Reserved.

C Intelligent Telephone Adaptor
ITA-200

Unit Information

WAN/LAN Configuration

SIP Configuration

WAN Interface Configuration

IP Address Assignment: DHCP(Default) Enable Auto Connect:

Primary DNS:

Secondary DNS:

Domain Name:

C1

WAN Interface Configuration

IP Address Assignment: DHCP(Default) Enable Auto Connect:

Primary DNS:

Secondary DNS:

Domain Name:

C2

WAN Interface Configuration

IP Address Assignment: DHCP(Default) Enable Auto Connect:

Static IP:

Net Mask:

Gateway:

Primary DNS:

Secondary DNS:

Domain Name:

D When you are finished entering your Internet connection settings, click on the Update button to save your changes.

Click on the Continue Link if you wish to continue configure the ITA-200 or the reset link to make changes effective (D1)

E If the user wants to obtain full access to all the web pages to configure SIP and other server information, he has to enter the super password in the password field. Super password is created using the following combination, the last 2 digits of the MAC address plus the 7th and 8th digits of the MAC address followed by **quta200**.

For example:
MAC address = 000f26001f88 the password will be **8800quta200** password is in lower case.

F To configure the ITA-200 to work with a Voip service Provider, go to the **SIP Configuration** tab. And enter information for SIP server information and SIP client information

Click on the **Update** button to apply your changes.

C3

D

Quantum Intelligent Telephone Adaptor V1.0
Copyright (c) 2004-2006 Quantum Technologies, Inc. All Rights Reserved.

D1

Provisioning Success. The new settings will be used on next power-up or reset. Please click **Reset** to have the new changes in to effect or click **Continue Link** to view/change configuration.

Quantum Intelligent Telephone Adaptor V1.0
Copyright (c) 2004-2006 Quantum Technologies, Inc. All Rights Reserved.

E

Intelligent Telephone Adaptor
ITA-200

Username:
Password:



Quantum Intelligent Telephone Adaptor V1.0
Copyright (c) 2004-2006 Quantum Technologies, Inc. All Rights Reserved.

F

Intelligent Telephone Adaptor
ITA-200

- Unit Information
- WAN/LAN Configuration
- SIP Configuration**
- SIP Services
- Misc. Servers
- Maintenance
- Login

Quantum Intelligent Telephone Adaptor V1.0
Copyright (c) 2004-2006 Quantum Technologies, Inc. All Rights Reserved.

G Reset ITA-200 to save the settings.

Congratulations!

The installation of the ITA-200 is complete.

G

Provisioning Success. The new settings will be used on next power-up or reset. Please click [Reset](#) to have the new changes in to effect or click [Continue](#) to view/change configuration.

Quintum Intelligent Telephone Adaptor V1.0
Copyright (c) 2004-2006 Quintum Technologies, Inc. All Rights Reserved.

For additional information or troubleshooting help, refer to the Technical Reference Manual on www.quintum.com You can also email for further support service-ticket@quintum.com or for business enquiries www.quintum.com/contact/sales-contacts

3 General Information

Thank you! You have purchased a quality product from Quintum and we would like to welcome you to the family of Quintum users. You will be pleased to know that Quintum has a comprehensive warranty program and efficient technical support.

The Warranty Program:

- We guarantee that this product is free from defective materials or poor workmanship during the warranty period.
- The warranty period for this product shall be 1 year from the date of purchase.
- Should you encounter any problem with this product, you will receive direct assistance from Quintum Technologies, INC. The manufacturer. Email: service-ticket@quintum.com

Important Information:

- Input voltage and current:
 - +12Volts DC, 500 mA.
- Operating temperature
 - 41 to 113°F(5 to 45°C)
- Weight
- ITA-200 181g
- Adapter 102 g

Warnings

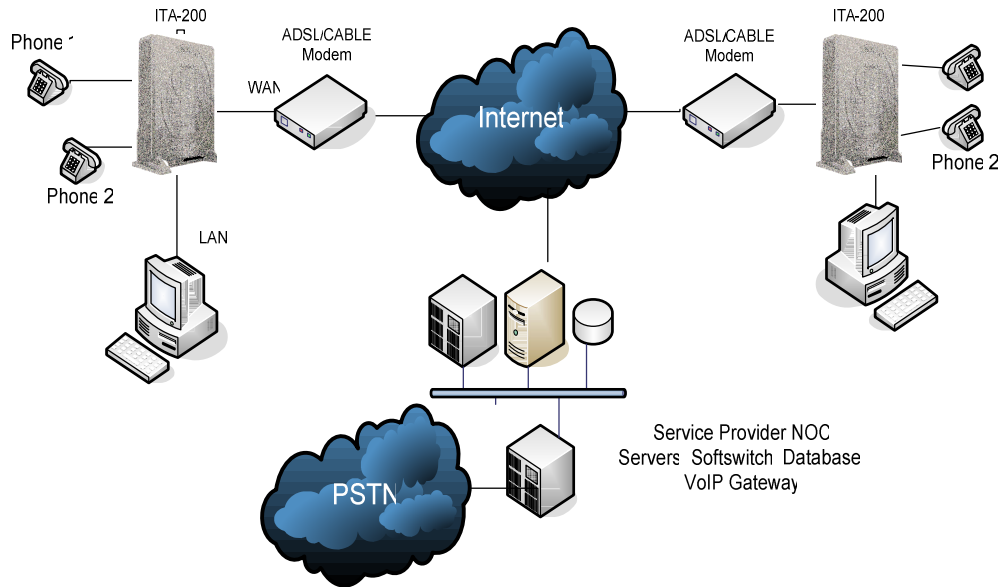
- **Read instructions before installing and powering unit.**
- **Keep instructions in a safe place for future reference**
- **The unit is intended for indoor use only in dry locations**
- **Adhere to all instructions or warnings**
- **Use the provided power adapter (GFT/GFP121U) that is supplied with the ITA-200 package.**

Regulatory Information

FCC Statement

- This product has been tested and complies with the specifications for Class B digital device, pursuant to Part 15 of the FCC Rules. These limits are designed to provide reasonable protection against harmful interference in a residential installation. This equipment generates, uses, and can radiate radio frequency energy and, if not installed and used according to the instructions, may cause harmful interference to radio communications.

4 Network Configuration



www.quintum.com

Head Office
QUINTUM TECHNOLOGIES, INC.
71 James Way,
Eatontown, New Jersey 07724, USA
Telephone: 732 460 9000 Fax: 732 544 9119

Hong Kong Office
QUINTUM TECHNOLOGIES (CHINA) LIMITED
102A, Silicom Tower, 88 Larch Street,
Tai Kok Tsui, Kowloon, H.K.
Telephone: 852.21239018 Fax: 852.21239016