



Quick Setup Guide

EDVR

tyco

Part Number 8200-0841-00 A0

EDVR Quick Setup Guide

A. Check System Components

American Dynamics EDVR Unit



Supplied Accessories



CD-ROM (Viewer software and user documents in electronic form) and this printed Quick Setup Guide



Two Power Cords:
(1) North American standard
(2) Continental European standard



Rack Mount Kit



Power Brick
(External Power Supply)



Alarm I/O Adapter

Required Items

- Composite Monitor (PAL or NTSC)
- Cameras and BNC Cables

B. Connect Devices to Rear Panel

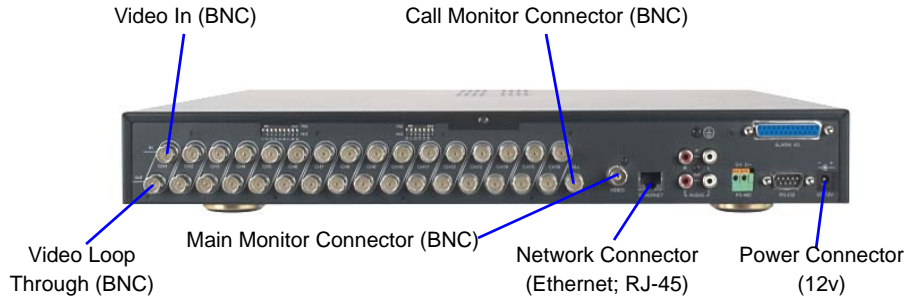
If a computer is available, you may want to view the Installation and Operation Guide as you set up your EDVR (included on the CD-ROM).

- 1 Remove all items from the carton. If anything is missing or broken, please inform Customer Service immediately.
- 2 Save all cartons and packing materials to use for shipping or transporting EDVR.
- 3 Connect the main monitor to the Main Monitor BNC connector.

- 4 Connect one or more cameras to the Video In BNC connector(s).

Note

For video loop through, Touch Tracker (ADTT16E), and other connections, refer to the Installation and Operation Guide that is included on the CD-ROM.



C. Power Up and Test

- 1 Attach the appropriate power cord to the Power Brick (external power supply) and connect to a power source. Apply power to the EDVR system and to the connected video monitor and camera(s).

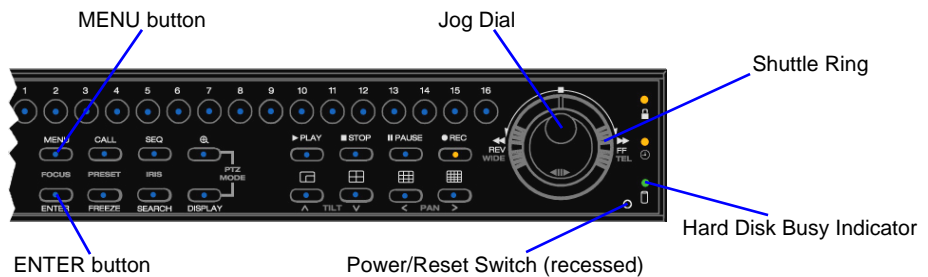
Note

EDVR powers up automatically when connected to a power source.

- 2 If the unit does not power up automatically, insert a tool such as the tip of a ballpoint pen into the front panel power/reset switch (near the lower right corner) and gently press. The unit will start.

Note

The recessed power switch works in one of two ways: (1) Press quickly to turn the EDVR on or off. (2) Press and hold for at least 3 seconds to restart the EDVR.



- 3 To set the Date and Time, press the MENU button. Select Quick Settings, press the ENTER button. Use the shuttle ring to set date and time. Press the MENU button to Exit to the Main Menu.

Note

Press the MENU button to set up the EDVR. For detailed set up instructions, refer to the Installation and Operation Guide on the CD-ROM.

D. (Optional) Select Video Output: NTSC or PAL

From the factory, the EDVR is configured for NTSC video output. However, if you need to change video output to PAL, or change PAL to NTSC, complete the following steps:

- 1 If the EDVR and the Main Monitor are not turned on, turn them on.
- 2 On the EDVR Front Panel, simultaneously press the Up and Pause buttons for at least 3 seconds. After you hear a long beep, release both buttons.
- 3 The camera images on the Main Monitor screen are replaced by the following text:

Set to PAL (or NTSC). OK

Please Press Any Button to Restart

Note

You will see the name of the video mode that you are switching **to**, either PAL or NTSC. You will not see both terms.

- 4 Press any Front Panel button to restart the EDVR. Once the EDVR has restarted, the EDVR will be in the video standard last selected.
- 5 After you restart, the EDVR will not be recording. Press the REC button to begin recording. (Default record settings: high quality with 30 F/S for NTSC and 25 F/S for PAL.)

If you have color cameras and a color monitor but you only see black and white video images, repeat the preceding process. It is likely that you have selected the incorrect video output for your equipment configuration (that is, you selected PAL for a NTSC system or NTSC for a PAL system).

E. Confirm Results

When you connect and apply power to the EDVR, the default setting is record on.

The EDVR should be recording live video and displaying information on the monitor. The hard disk drive (HDD) activity LED on the front panel should be blinking. Is the EDVR functioning as described?

Yes:

Shut down the unit and continue to install alarms and other accessories, as needed. Refer to the EDVR Installation and Operation Guide for details.

No:

If the EDVR did not power up, reset it using the power/reset switch, described in step 2 of section C ("Power Up and Test").

Look at the main monitor to see if the unit restarts. If there are no indications on the monitor, insert a tool into the power/reset switch again and press quickly to shut down the unit. Then check the following:

- Connections
- Termination Settings
- Cameras
- Monitor(s)
- Cables, Cords, and Other connectors

If you have checked all of these items and the EDVR still fails to power up, or if you restarted the EDVR and it still fails to operate properly, please contact American Dynamics Technical Support.

F. (Optional) Install EDVR Client Software

To remotely view and manage one or more EDVRs from a PC, install the included EDVR Client Software.

Note

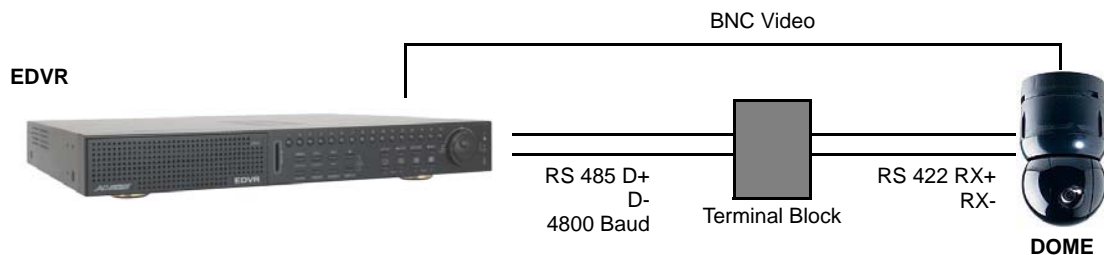
Both the EDVR and the PC must be physically connected to the same network (LAN).

- 1 Insert the enclosed CD in the CD-ROM drive of the PC from which you wish to remotely monitor one or more EDVRs. The software installation automatically starts.
- 2 Follow the on-screen instructions. The default username is **admin** and the default password is **9999**.
- 3 Refer to the Installation and Operation Guide (on the included CD) for step-by-step installation and configuration instructions and an overview of the features.

Also refer to the Installation and Operation Guide for details about using a Web browser to remotely view one or more EDVRs.

G. Connecting a SpeedDome Ultra or Optima to EDVR

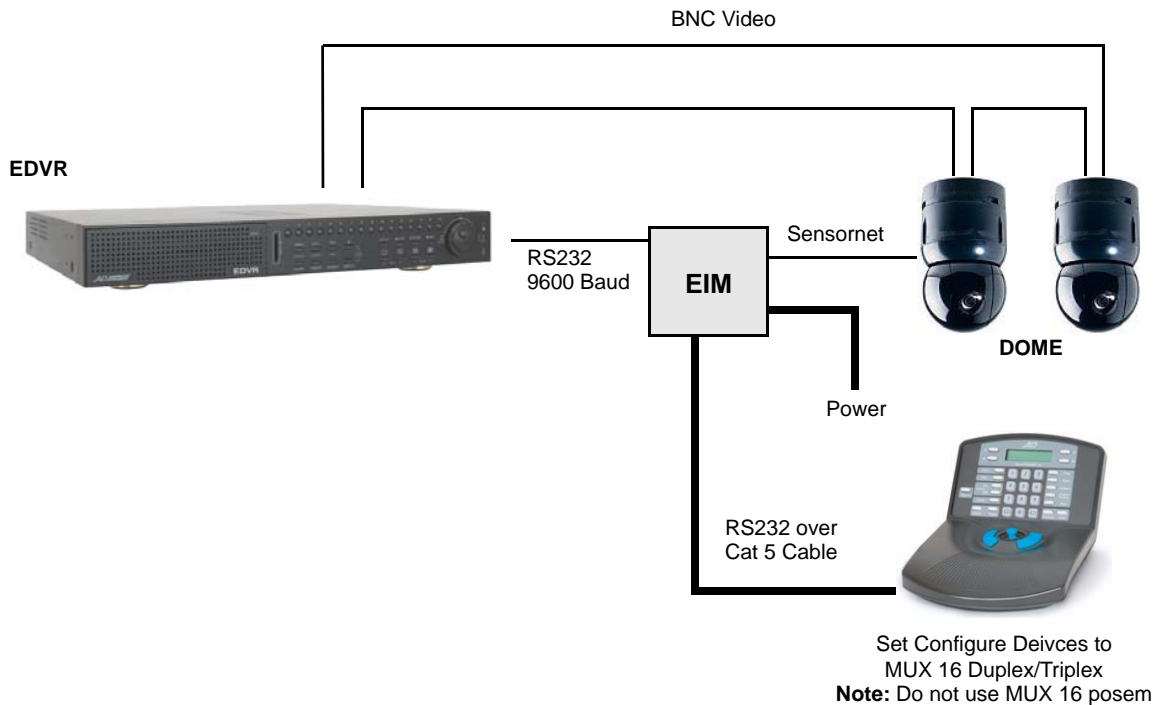
- 1 Connect the hardware. Refer to the following diagram:



- 2 To configure the COM port, press the MENU button. Select Advanced Settings > Communication > RS485 Settings using the arrow buttons or jog dial and pressing the ENTER button. Set the Baud Rate (for example 4800 for AD SpeedDome Ultra or Optima) using the shuttle ring. Keep pressing the MENU button to return to the Main Menu.
- 3 To configure dome settings, press the MENU button. Select Advanced Settings > Dome Settings using the arrow buttons or jog dial and pressing the ENTER button. Highlight the appropriate camera, set the ID (integer 1-254) and select the protocol suitable for the dome using the shuttle ring (for example: AD422 for AD SpeedDome Ultra or Optima). Keep pressing the MENU button to return to the Main Menu.

H. Connecting ADTT16E to EDVR

- 1 Connect the hardware. Refer to the following diagram:



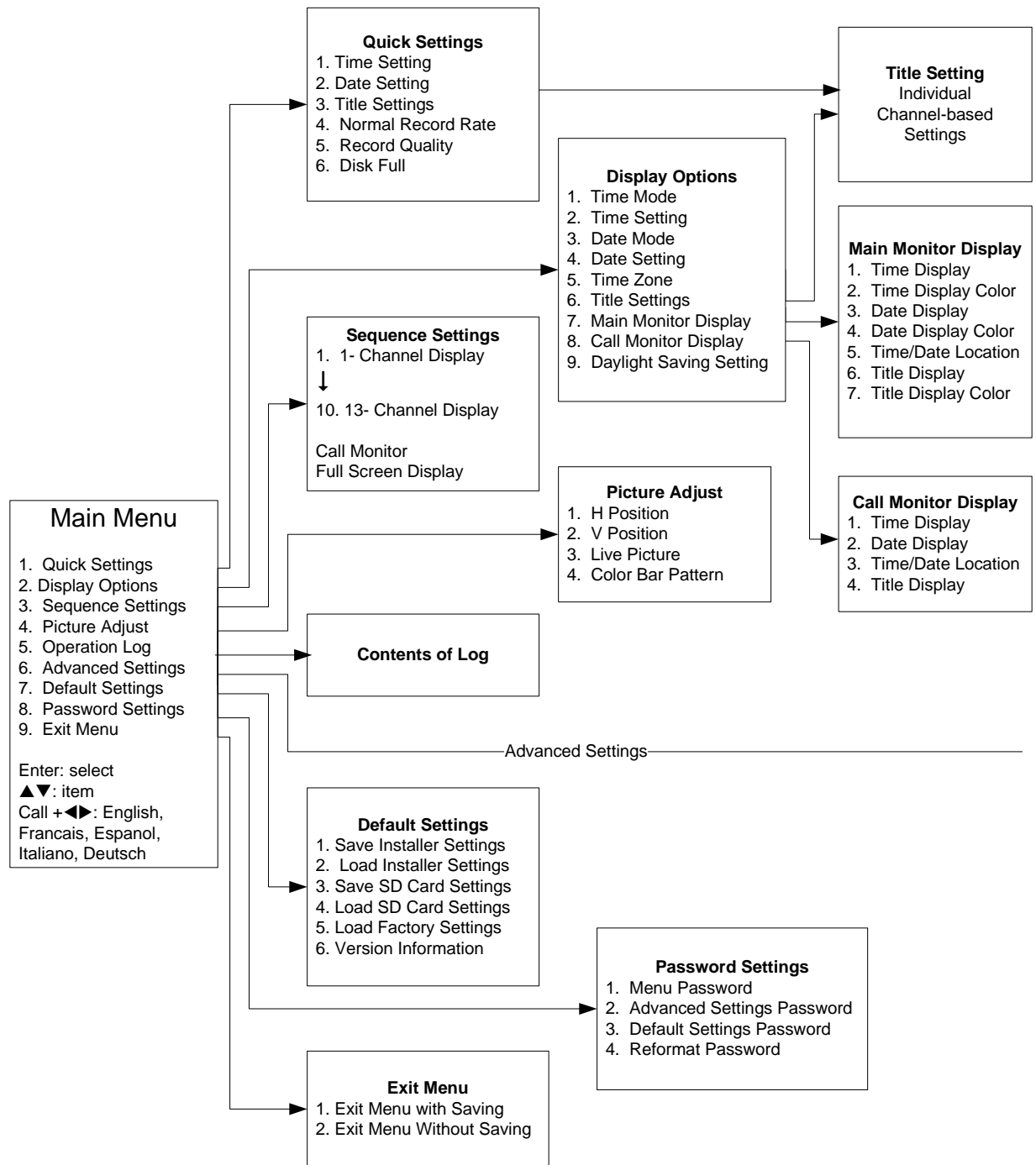
- 2 Configure the Touch Tracker (Config Devices). Set Configure Devices to MUX 16 Duplex or Triplex.

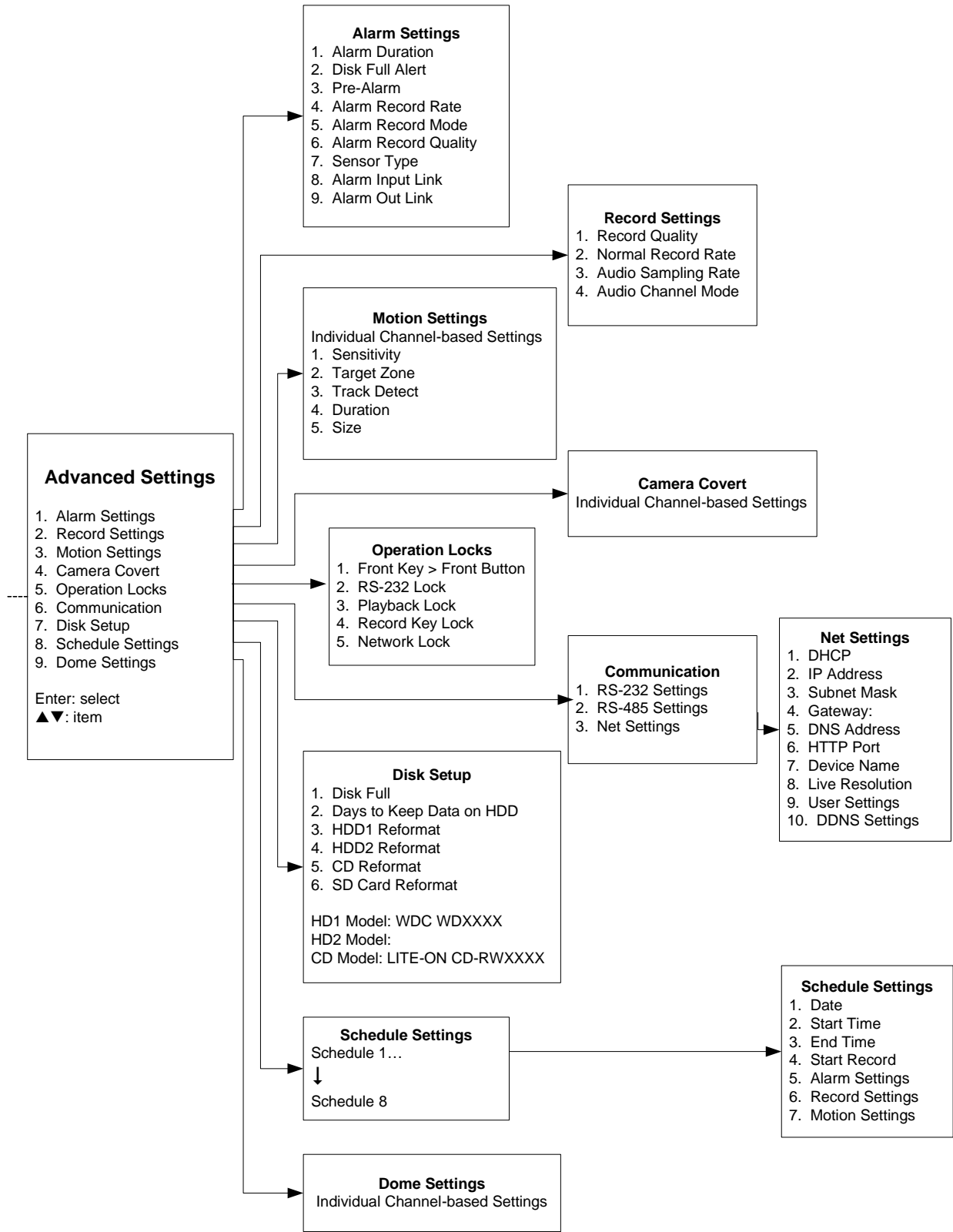
Note

Do not use MUX 16 posem.

- 3 To configure the COM port, press the MENU button. Select Advanced Settings > Communication > RS232 Settings using the arrow buttons or jog dial and pressing the ENTER button. Set Baud Rate to 9600 using the shuttle ring and then press the ENTER button. Keep pressing the MENU button to return to the Main Menu.
- 4 To configure dome settings, press the MENU button. Select > Advanced Settings > Dome Settings using the arrow buttons or jog dial and pressing the ENTER button.. Highlight the camera, set the ID (integer 1-254) using the shuttle ring. Move to the protocol column and select the protocol using the shuttle ring. Press the ENTER button (AD422 only). Keep pressing the MENU button to return to the Main Menu.

EDVR Menu Map





Settings

Alarm Settings

Alarm Buzzer On/Off

Main Menu > Advanced Settings > Alarm Settings > Alarm Out Link. Highlight Buzzer and then set Sensor, V-Loss or Motion column to Yes or No.

Alarm Duration

Main Menu > Advanced Settings > Alarm Settings > Alarm Duration, 0 (Transparent) -60 sec, 1-60 min or Nonstop (latch)

Alarm Input/Output Link

Main Menu > Advanced Settings > Alarm Settings > Alarm Input Link/Alarm Output Link

Alarm Sensitivity Setting

Main Menu > Advanced Settings > Alarm Settings > Sensor Type. Set Sensitivity.

Alarm Settings

Main Menu > Advanced Settings > Alarm Settings. Set Alarm Duration, Alarm Record Rate, Alarm Record Mode and Alarm Record Quality.

Disk Full Alert Setting

Main Menu > Advanced Settings > Alarm Settings. > Disk Full Alert. Set value to On or Off.

Motion Detection Setting

Main Menu > Advanced Settings > Motion Settings. Highlight a channel, hit Enter to set Sensitivity, Target Zone, Track Detect, Duration and Size of Target (default is the whole view).

Pre-Alarm Setting

Main Menu > Advanced Settings > Alarm Settings > Pre-Alarm. Set value to On or Off.

Record Only Alarmed Cameras

Main Menu > Advanced Settings > Alarm Settings > Alarm Record Mode. On each desired camera set mode value to Exclusive.

The Alarm trigger must also be turned on (see item below).

Trigger Alarm on Sensor, V-Loss or Motion Input

Main Menu > Advanced Settings > Alarm Settings > Alarm Input Link. Highlight a channel and set the value for Sensor, V-Loss and Motion to On.

The alarmed duration is determined by "Alarm Duration" above.

Trigger Recording on Sensor or Motion Alarm

Main Menu > Advanced Settings > Alarm Settings > Alarm Out Link > Start Record. Highlight the Sensor or Motion column and set value to Yes.

The Alarm trigger must also be turned on.

Communication Settings

Com Port Baud Rate

Main Menu > Advanced Settings > Communication > RS-232 Settings/RS-485 Settings > Baud Rate

DHCP Turn On/Off

Main Menu > Advanced Settings > Communication > Net Settings > DHCP. Set value to On or Off

View IP Address

While in Live or Playback video mode press the DISPLAY button three times to bring up the Ethernet screen to see the EDVR's IP Address.

Date/Time Settings

Date/Time Settings

Quick: Main Menu > Quick Settings > Time, Date.
Detail: Main Menu > Display Options > Time Mode, Time Setting, Date Mode, Date Setting

Daylight Saving Setting

Main Menu > Display Options > Daylight Saving Setting. Select Country.

Time Zone Setting

Main Menu > Display Options > Time Zone

Display Settings

Channel Name Settings

Main Menu > Quick Settings > Title Settings

Device Name Setting

Main Menu > Advanced Settings > Communication > Net Settings > Device Name

Monitor Settings, Main/Call

Main Menu > Display Options > Main Monitor Display/Call Monitor Display. Set Time Display and Title Display.

Sequencing on Call monitor

Main Menu > Sequencing Settings. Select option 11 Full Screen Display and set camera dwell time

Sequencing on Main Monitor

Main Menu > Sequencing Settings. Select one of the 10 display options and set camera dwell time on selected pane.

General

Access Protection

Main Menu > Advanced Settings > Operation Lock > Highlight Front Button Lock, RS-232 Lock, Playback Lock, Record Button Lock or Network Lock and set value to On or Off.

Audio Settings

Main Menu > Advanced Settings > Record Settings > Audio Sampling Rate/Audio Channel Mode

Data Lifetime

Main Menu > Advanced Settings > Disk Setup > Days to Keep Data On HDD

View Operation Log

Main Menu > Operation Log

Playback

Forward/reverse: Shuttle ring, turn right/left.
Slow forward/reverse: Pause then use the shuttle ring.
Picture-by-picture: Press Pause and again to display forward one frame at a time. Use the shuttle ring for moving in both directions

Record Settings

Main Menu > Advanced Settings > Record Settings > Record Quality/Normal Record Rate

Recording Start/Stop

Start: Press REC button briefly
Stop: Press REC button for 3 seconds until it beeps

Save Clips

During display of a single camera, Pause > Menu to bring up the Save Menu > Select media (SD Card or CD) and format (JPEG or AVI). JPEG is protected by digital signature. Starting FW v1.50 AVI is also protected.

PTZ Cameras and Touch Tracker

Control EDVR from an ADTT16e

Button A: Menu mode

Button B: Play mode

Button C: Freeze live video

Button D: End Menu/Play

Track Ball: Navigate through the menus
Up/Down to select
Right/Left to activate

Direct PTZ Camera Control from the Front Panel

Up, Down, Left, Right: PAN/TILT

Shuttle: Zoom

Menu/Enter: Focus

Seq/Search: Iris

Call: Goto Preset

Freeze: Set Preset

Display: Show hint

Schedule Settings

Schedule Settings

Main Menu > Advanced Settings > Schedule.
Highlight a schedule and move to the Enter column. Press ENTER button to bring up the Schedule Settings Screen.

Schedule Alarm Settings

Continue from item Schedule Settings; On the Schedule Settings screen highlight Alarm Settings and set value to Enable. Further highlight the Alarm Settings, Enter column and press the ENTER button to bring up the Schedule Alarm Settings screen.

Schedule Enable/Disable

Main Menu > Advanced Settings > Schedule.
Highlight a schedule and set to Enable or Disable.

Search

CD Search

Search > CD

Search Filter

Search > Search Filter > Alarm Filter, Date Filter or Time Filter

Search List

Search > Full List

Thumbnail Search

Search > Thumbnail

Use Left and Right to select target date/time and slot and Up and Down to drill down

SD Card Search

Search > SD Card

System

Drive Reformat

Main Menu > Advanced Settings > Disk Setup > Reformat HDD, CD, or SD Card

Firmware Update

Copy the Update.bin file into DVRVIDEO folder in the SD Card. Insert the card into the SD slot on machine which can be either on or off, and hold the power/reset switch for at least 3 seconds to reboot. Hold the button until FW upload is started as indicated by the change in Load Size on screen.

Load Factory Settings from SD Card

Main Menu > Default Settings > Load Factory Settings

Load System Settings from SD Card

Main Menu > Default Settings > Load SD Card Settings

