



**MICROBOARDS**<sup>®</sup>  
*Technology*



# **G3 Auto Printer**

*For Microsoft Windows<sup>®</sup> 7, Vista, and XP*

## **Users Manual**



## TABLE OF CONTENTS

|   |    |
|---|----|
| Introduction .....                              | 5  |
| What's Included.....                            | 5  |
| System Requirements .....                       | 6  |
| Assembly and Ink Installation.....              | 6  |
| Assembly Instructions .....                     | 6  |
| Installing Ink Cartridges.....                  | 7  |
| Supported Ink Cartridges .....                  | 7  |
| Loading / Replacing Ink Cartridges .....        | 7  |
| Loading Discs.....                              | 8  |
| Front Control Panel .....                       | 8  |
| Output Bin Sensor .....                         | 8  |
| G3 Auto Printer Installation .....              | 9  |
| Connecting to a PC .....                        | 9  |
| Windows 7 and Vista Hardware Installation ..... | 9  |
| Windows XP Hardware Installation .....          | 10 |
| Setting Printer Alignment.....                  | 12 |
| Alignment .....                                 | 12 |
| G3 Toolbox.....                                 | 12 |
| Print Test Disc .....                           | 12 |
| Exercise Belt .....                             | 12 |
| Cleaning .....                                  | 12 |
| Using the G3 Auto Printer .....                 | 13 |
| Loading Discs.....                              | 13 |
| SureThing Disc Labeler.....                     | 13 |
| Creating New Labels .....                       | 13 |
| Printing Labels.....                            | 13 |
| Printing Preferences.....                       | 14 |
| Color Tab .....                                 | 14 |
| Advanced Tab .....                              | 15 |
| Diameter Settings Tab.....                      | 15 |
| Ink Tab .....                                   | 16 |
| Alignment Tab .....                             | 16 |
| Print Quality Tab.....                          | 17 |
| Printing Recommendations .....                  | 17 |
| About Tab.....                                  | 17 |
| Manual Software Re-Installation .....           | 18 |
| Troubleshooting .....                           | 19 |
| Printer not printing: .....                     | 19 |
| Disc Loading error:.....                        | 19 |
| Low Ink indication:.....                        | 19 |
| Printing Specifications .....                   | 20 |
| Technical Support .....                         | 20 |



# Introduction

The Microboards G3 Auto Printer is a CD, DVD, and BD auto-loading disc printer with a 50 disc capacity. Microboards and HP co-developed the printer technology, allowing up to 4800 x 1200 dpi printing.

SureThing Disc Labeler is packaged with the G3 Auto Printer, providing you with an easy tool for designing and printing your labels.

---

## What's Included

When unpacking your G3 Auto Printer system, the following items should be included:

- G3 Auto Printer print system
- G3 Auto Printer Quick Start Guide
- Print Sample
- Power Cord
- Blank Printable CDs
- Users Manual (This document)
- Microboards G3 Auto Printer Install CD (Includes Windows XP/Vista/7 drivers and SureThing Label software)
- Microboards GX-300HC Color Ink cartridge (14ml)
- USB Printer Cable
- Disc output assembly

If any of these items are missing, please contact your distributor or Microboards Technology Technical Support department at 952-556-1639.

**The G3 Auto Printer installation disc includes an Installer that will walk you through the process step by step. Please perform the installation in order as specified in the Installer before connecting to a computer.**

---

## System Requirements

The Microboards G3 Auto Printer has the following minimum requirements and compatibilities:

### Operating System

Microsoft Windows XP with SP2, Windows Vista, or Windows 7. 32- and 64-bit Operating Systems.

### Processor

Pentium 4 (or equivalent) CPU, running at 3.0 GHz or faster.

### System Memory

Minimum 1 GB of system memory.

### Hard Drive Space

About 100 MB of free space is required on the system hard drive for the applications and drivers. Additional drive space will be required for saved disc labels.

### USB Connection

USB 2.0 is recommended. USB 1.1 may be used but is not recommended, as using USB 1.1 may result in more time being necessary for print images to be passed to the printer.

## Assembly and Ink Installation

---

### Assembly Instructions

#### G3 Auto Printer Assembly

Remove the G3 Auto Printer system from the shipping box and confirm you received all of the items.

Place the G3 Auto Printer on a stable, flat surface. You will need room both in front and behind the system, as discs will be accessed from both locations.

The Input Bin posts are pre-installed, with the wide post to the right.

The 50-disc Output Bin is shipped in place under the front cover. Lift the cover to remove the packaging tape from the Output Bin.



---

## Installing Ink Cartridges

### Supported Ink Cartridges

The G3 Auto Printer uses a single color ink cartridge. The part number for this cartridge is GX-300HC. If other cartridges are installed, the G3 Auto Printer will not function. These cartridges are available from any Microboards reseller.

***Refill kits or non-Microboards ink cartridges are not recommended for use in the G3 Auto Printer system. Use of these types of cartridges will cause the printer to fail. Use of these types of cartridges will void the warranty.***

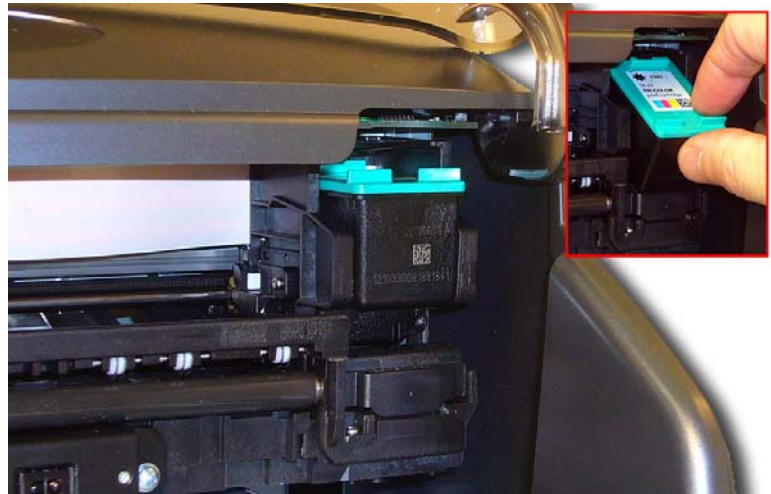
### Loading / Replacing Ink Cartridges

Cartridges should be changed while the G3 Auto Printer is on. The cartridge can be replaced during printing.

The G3 Auto Printer system ships with one **Microboards GX-300HC** color ink cartridge.

- Lift the front cover with the power on. The print cartridge cradle will move to the right side of the G3 Auto Printer, as shown below.
- Tilt the old cartridge forward to release the cartridge from the cradle, as shown in the inset below.
- Lift the old cartridge out of the cradle.
- Remove the new **GX-300HC** ink cartridge from its packaging and carefully remove the plastic tape. Hold the ink cartridge so that the copper strip is at the bottom.
- With the front of the new **GX-300HC** ink cartridge tilted down, slide the cartridge into the cradle.
- Tilt the front of the **GX-300HC** ink cartridge back up to lock the ink cartridge in place.
- Lower the front cover.
- The new **GX-300HC** ink cartridge will be initialized by the printer.

***The Microboards GX-300HC Ink Cartridge must be used or the printer will not function.***



---

## Loading Discs

The next step is to load your G3 Auto Printer with discs. The system will accept CD or DVD 120 mm (12 cm) inkjet printable discs. If the disc does not have an inkjet printable surface, the ink will not adhere to the surface of the disc. The G3 Auto Printer will only accept 12 cm discs. Business card or 8 cm discs are not supported by this system.



Figure 1

Load the first 5 or 6 discs flat, as seen in figure 1.



Figure 2

Load the rest of the discs at an angle, against the wide input rod, as seen in figure 2.

The G3 Auto Printer will hold a maximum of 50 discs. DO NOT load more than 50 discs in the system, as this may cause the discs to feed incorrectly.

---

## Front Control Panel

The AC power switch located on the back of the G3 Auto Printer must be turned on first in order to supply power to the Front Control Panel.

The **Power Button** on the front panel of the G3 Auto Printer turns the Printer on and off. It may take a few seconds for the Printer to turn on after you press the Power Button.

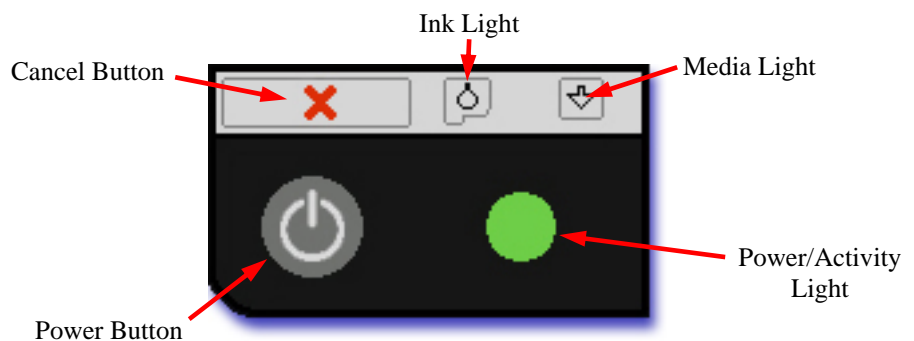
To turn off the power to the printer using the Control Panel, you will need to press and hold the Power Button for 3 seconds. Once the Ink Light, Media Light, and Power Light begin flashing, you can release the Power Button.

The green Power/Activity light flashes when the printer is active, either while printing or initializing.

The **Cancel Button** can be used to discontinue printing. This will either cancel the entire print job or just the current disc, depending on the label being printed.

If a disc is not detected during printing, the **Media Light** will flash. Verify that you have discs in the input hopper and press the Media Light to load and print the next disc.

The **Ink Light** will come on if the ink cartridge is low or empty.



---

## Output Bin Sensor

The G3 Auto Printer is equipped with an output bin sensor to warn you when the output bin is full. If the bin is full, the Media Light will stay on and you will not be able to print another disc until the bin is emptied.



# G3 Auto Printer Installation

***The G3 Auto Printer installation disk includes an Installer that will walk you through the process step by step. Please use the Installer and follow the installation steps in order.***

The following installation sections are intended only as a reference for the installation process, not as a guide to installing the G3 Auto Printer. Performing the installation out of order could result in an unsuccessful installation.

Installation should always be done when logged in as a user with full Administrator rights.

---

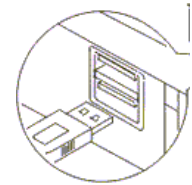
## Connecting to a PC

***DO NOT CONNECT YOUR G3 AUTO PRINTER TO A COMPUTER BEFORE RUNNING THE INSTALLER LOCATED ON THE INSTALLATION DISK!!***

The connection between the PC and the Microboards G3 Auto Printer is done with one USB cable.

1. Plug in the AC power cord to the back of the G3 Auto Printer.
2. Confirm that the power is turned ON to both the G3 Auto Printer and on your PC.
3. Connect the square shaped end of the USB cable to the back of the G3 Auto Printer.
4. Connect the flat, rectangular end of the USB cable into a USB 2.0 port in your PC.
5. Turn on the G3 Auto Printer.

***USB Cable length exceeding 6 feet between the G3 Auto Printer and the PC is not supported!***



---

## Windows 7 and Vista Hardware Installation

The Microboards G3 Auto Printer Installer should always be run when logged in as user with full Administrator rights. This is required for the driver pre-installation to be successful. Once the G3 Auto Printer is plugged into the PC via the USB connection, the hardware will automatically be found and installed on your PC.

During the driver pre-installation, you may need to verify that you would like to install the drivers.

If the Installer is run by a user without full Administrator rights, or you do not verify that the drivers should be installed, the hardware will need to be installed using the Hardware Wizard. Please follow the directions below.

# Windows XP Hardware Installation

If you are installing the hardware while running the G3 Disc Publisher installer, this process will occur automatically. The Windows Found New Hardware Wizard will appear during any hardware installation when not using the Installer. Please follow all directions in the order in which they appear.

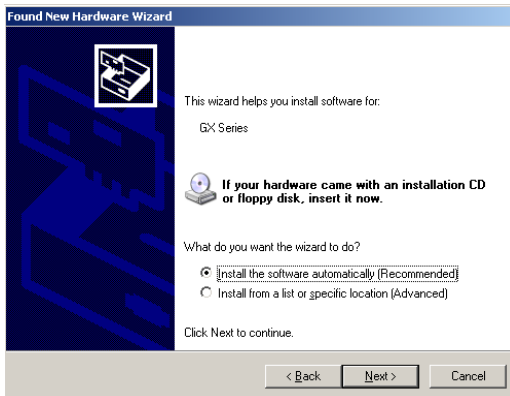
Turn on power to the G3 Auto Printer.

Insert the Microboards G3 Auto Printer CD into a drive in your computer. Follow the instructions provided by the Installer. Connect the G3 Auto Printer to the PC only when you are prompted to.

Once the G3 Auto Printer is connected, the operating system will next display the following screen unless you are using the Installer:



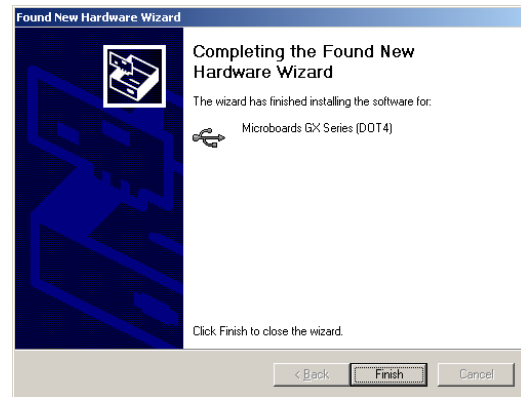
1. Select **No, not this time** and click **Next**.



2. Click **Next**.



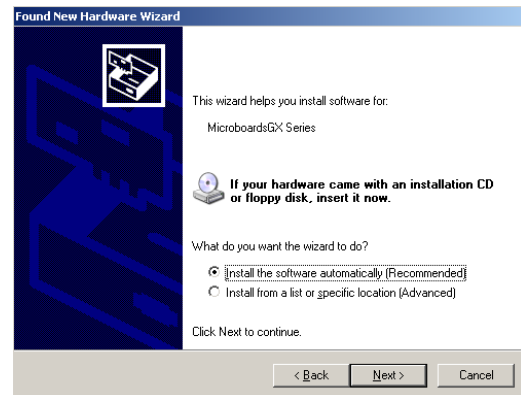
3. Click **Continue Anyway**.



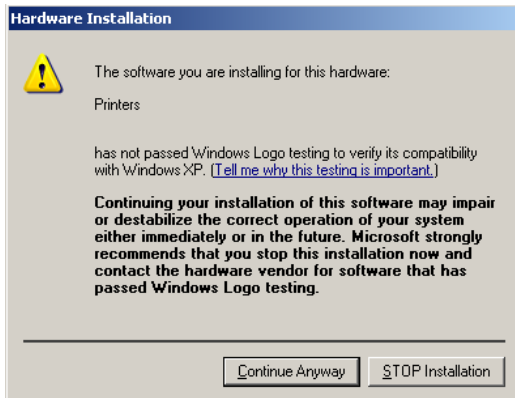
4. Click **Finish** for the next screen.



5. Select **No, not this time** and click **Next**.



6. Click **Next**.



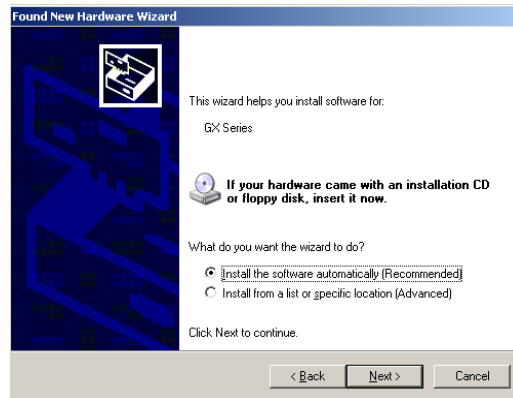
7. Click **Continue Anyway**.



8. Click **Finish** for the next screen.



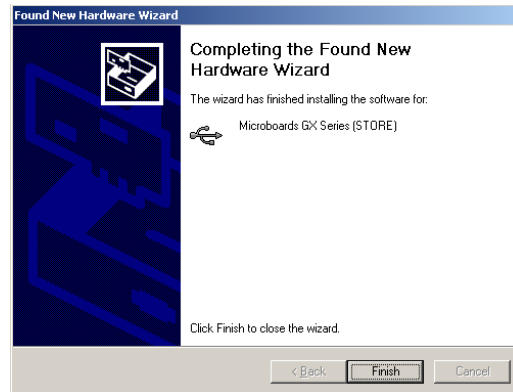
9. Select **No, not this time** and click **Next**.



10. Click **Next**.



11. Click **Continue Anyway**.



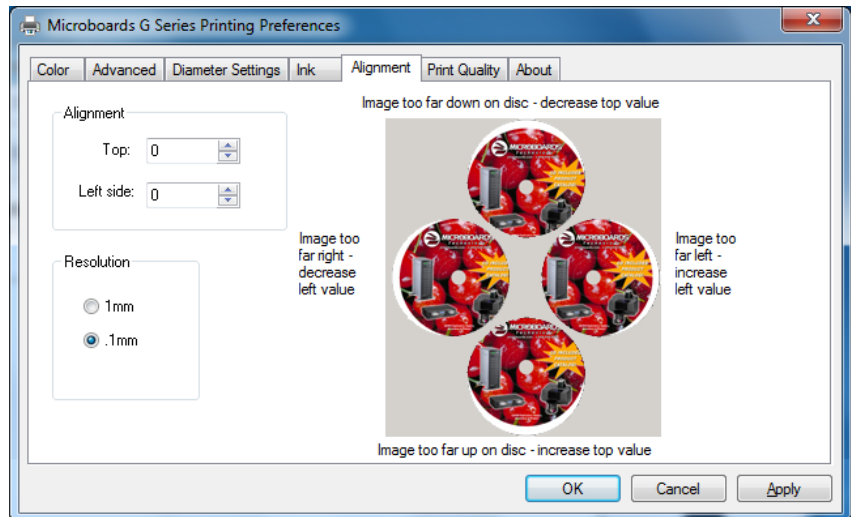
12. Click **Finish**.

# Setting Printer Alignment

## Alignment

The G3 Auto Printer has been aligned to 0.1mm precision at the factory. You may need to fine tune the alignment settings for full surface coverage depending on the media brand and print surface type. Follow these steps if alignment modification is needed:

- Click on the **Start** Button on your Windows computer.
- Select **Settings** and then **Printers**.
- Right click the **Microboards G Series** icon.
- Select **Printing Preferences**.
- Select the **Alignment** Tab.
- Click on the **.1mm** selection in the Resolution box.



- Enter the alignment changes into the **Top** and **Left Side** boxes, using the graphic instructions on the right side as a guide to moving the print image on the disc.
- Click the **Apply** button.
- Click the **OK** button.
- Verify the alignment by printing full coverage image created in SureThing. The image should print centered on the disc. If not, adjust the **Top** and **Left Side** alignment values according to the graphic on the Alignment tab and repeat.

## G3 Toolbox

A shortcut to the G3 Toolbox was added to your desktop during the printer installation. Double-click the icon to open the toolbox. For each of the functions, a blank disc will need to be loaded.



### Print Test Disc

Load an unprinted disc in the input hopper prior to clicking this button to print a Test Disc image.

### Exercise Belt

This utility should be run if the printer has been idle for an extended period of time, and can be run multiple times if necessary. The belts will run at high speed for a period of time to recondition the belts. It is not necessary to load any media for this utility.

### Cleaning

The printheads may require cleaning if the printed images show streaks of color. This may occur if the G3 Auto Printer has been idle for an extended period of time.

You will need to place a disc on the belts below the input hopper prior to running the Cleaning.

Running this process more than once may be required if the quality does not improve after cleaning one time.

# Using the G3 Auto Printer

## Loading Discs

Before printing with your G3 Auto Printer, verify that the input hopper is loaded with discs. The system will accept CD or DVD 120 mm (12 cm) inkjet printable discs. If the disc does not have an inkjet printable surface, the ink will not adhere to the surface of the disc. The G3 Auto Printer will only accept 12 cm discs. Business card or 8 cm discs are not supported by this system.

Load the first 5 or 6 discs flat, as seen in figure 1.

Load the rest of the discs at an angle, against the wide input rod, as seen in figure 2.

The G3 Auto Printer will hold a maximum of 50 discs. DO NOT load more than 50 discs in the system, as this may cause the discs to feed incorrectly.



Figure 1



Figure 2

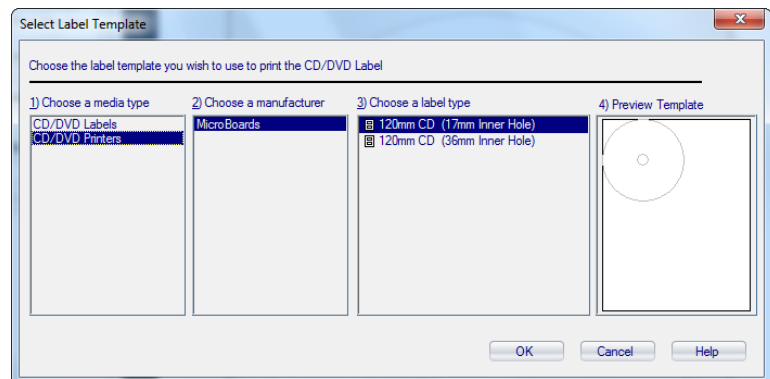
## SureThing Disc Labeler

SureThing Disc Labeler is included with the G3 Auto Printer and will be installed during the G3 Installation. For more information on using SureThing, please refer to the SureThing Help menu.

### Creating New Labels

Any label you create in SureThing must use the Microboards template to print correctly.

1. To create a new label, either click **New Project** in the Action window on the left, or select **New** from the **File** menu.
2. Click the **Select Label** button on the lower left corner of the dialog that opens to view the available label templates if the dialog that opens does not appear as shown to the right.
3. Highlight **CD/DVD Printers** in the Media Type column.
4. Highlight **Microboards** in the Manufacturer column.
5. Select from the options listed in the Label Type column.

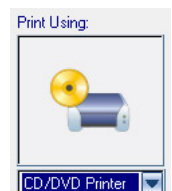


- We recommend that you use the 17mm inner hole template to ensure that your image will fully cover the printable surface on both hub printable and non-hub printable media.**
6. Click **OK** to begin designing the label.

### Printing Labels

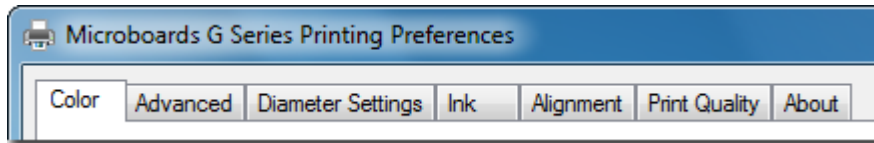
Select **Print** from the File menu while the label you want to print is open. Be sure that you have selected the Microboards G Series and that **CD/DVD Printer** is selected in the Print Using field before clicking the **Print** button.

If you are printing more than one copy of a label, enter in the number you wish to print before clicking the **Print** button.



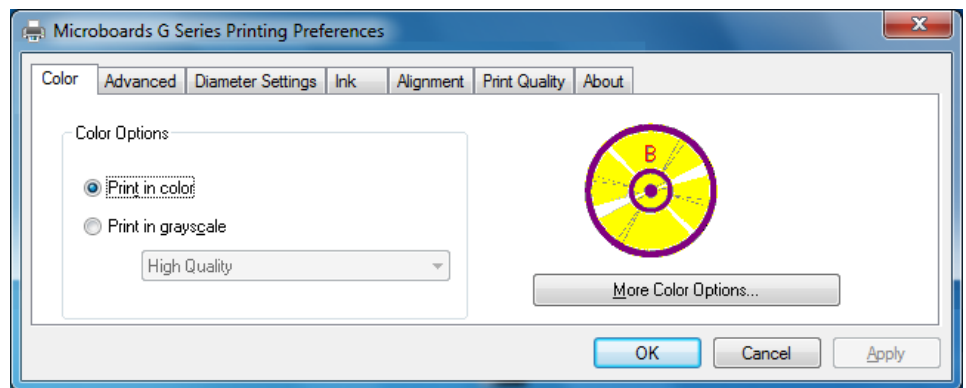
# Printing Preferences

Access the Printing Preferences by clicking the **Start** Button on your Windows computer. Select **Settings** and then select **Printers**. Right click on the **Microboards G Series** icon, then select **Printing Preferences**. There are 7 tabs across the top of the window. Click each tab to see the available settings.



## Color Tab

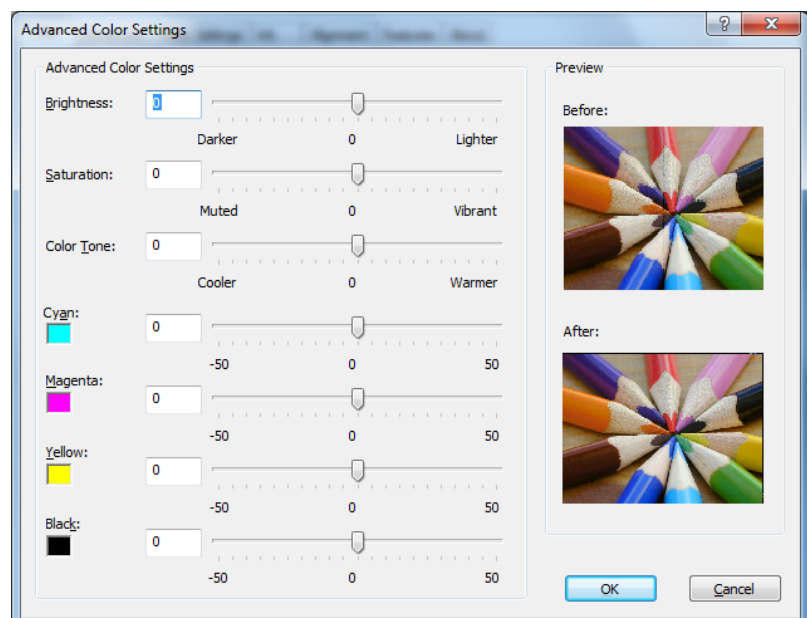
The Color Tab allows you to specify that the entire image should be printed in grayscale, or printed in sepia. You also have access to **More Color Options** from this tab.



## More Color Options

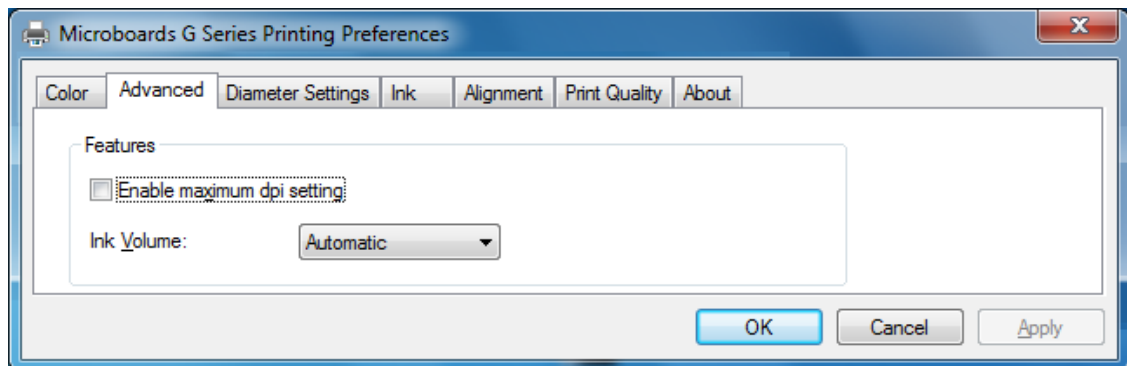
**Saturation, Brightness** and **Color Tone** allow you to fine tune your print image.

The four ink settings allow you to change the volumes used of each specific ink cartridge.



## Advanced Tab

The Advanced Tab allows you to **Enable Maximum dpi setting** and adjust the amount of ink placed on the disc using the **Ink Volume** setting.

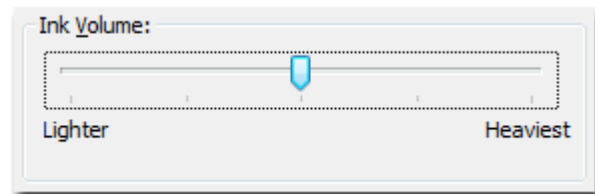


Enabling the maximum dpi will result in longer times to process your print image, reducing throughput.

To change the Ink Volume, click the drop-down box and select Change. A window will open with a setting bar for the option selected.

Changing the Ink Volume will affect how quickly you need to replace your ink cartridges, but also affects the quality of the printed output.

The default settings are the recommended settings and should be used unless absolutely necessary.



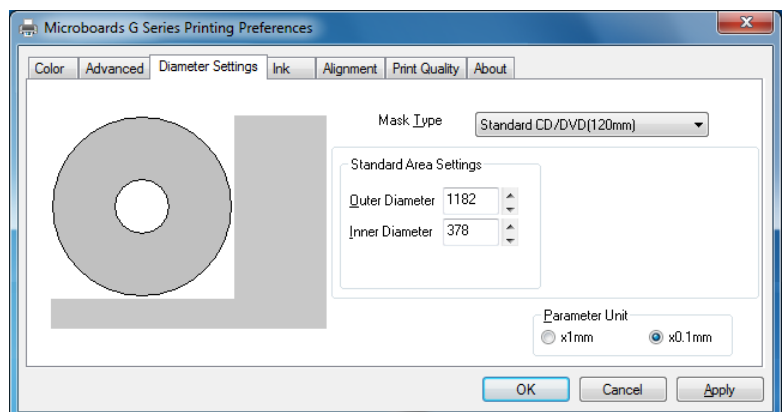
## Diameter Settings Tab

The Diameter Settings tab allows you to change the size of the print image to accommodate the variety of printable surface area available on media.

The Outer and Inner **Diameters** will change the size of the area to be printed. To avoid excessive ink buildup, these values should never be set so that the G3 Auto Printer is printing off the media.

The Parameter Unit should remain on the **0.1mm** setting for maximum precision.

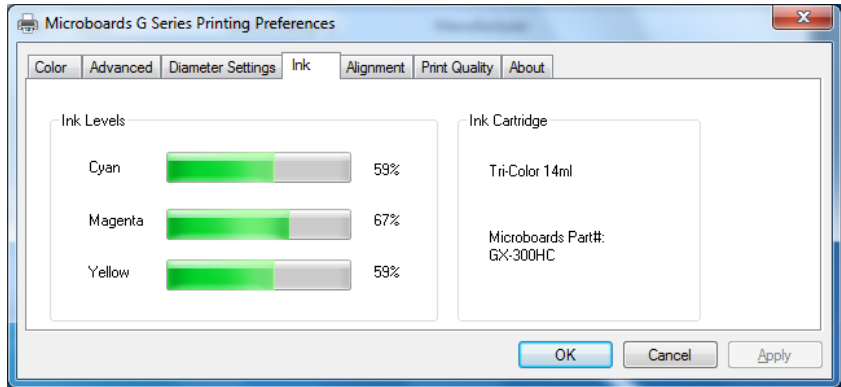
You can also select one of the preset **Mask Types** to change the diameter settings.



# Ink Tab

The **Ink Levels** show how much remains of all 3 colors, Cyan, Magenta and Yellow.

NOTE: If you place a used cartridge in the G3 Auto Printer, the ink level may not be reported correctly. If the G3 can identify the cartridge, it may report the correct ink levels; if not, it will assume that the ink cartridge is new and will show ink levels of 100%.



Before each disc is printed, the ink levels are checked. If the level of any one color has reached 10%, a warning message will be displayed on your PC and printing will be temporarily suspended. You can either change the cartridge at this point and click OK, or click OK to continue printing using the same cartridge.

If you continue with the same cartridge, printing will continue uninterrupted until the ink level reaches 5%. The low ink level warning will be displayed once more. Again, either change the cartridge or continue.

Once the ink level reaches 3% or less, the warning will be displayed before each print.

**It is strongly recommended that you replace the cartridge at this point.**

The **Ink Cartridge** information includes the re-order part number for the cartridge.

# Alignment Tab

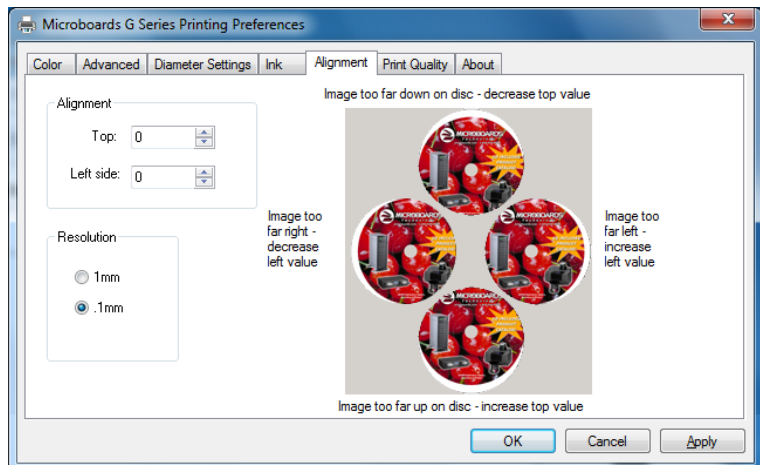
**Alignment** values will move the print image on the disc. Use the graphic on the right side of the tab as a guideline in how alignment values should be adjusted.

The **Resolution** setting should always be set at **.1mm** for best results.

The Outer and Inner **Diameters** will change the size of the area to be printed. To avoid excessive ink buildup, these values should never be set so that the G3 Disc Printer is printing off the media.

The default diameter settings are **1180** for the Outer and **360** for the Inner when the Resolution is at .1mm. For hub-printable media, the Inner diameter should be reduced.

You may need to adjust the alignment depending on the media you are using (see page 13).





## Print Quality Tab

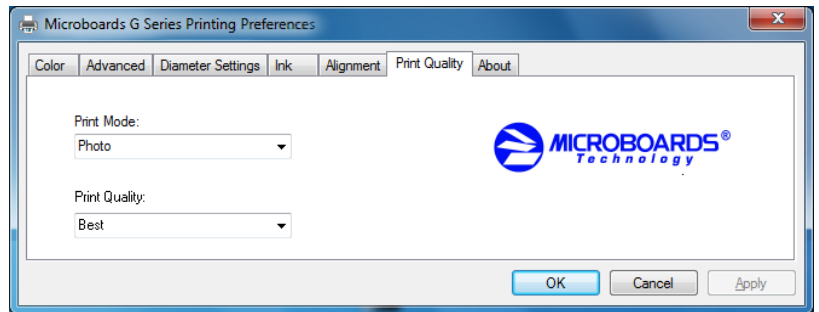
The Print Quality tab controls the print resolution.

### Print Quality

- Best
- Normal

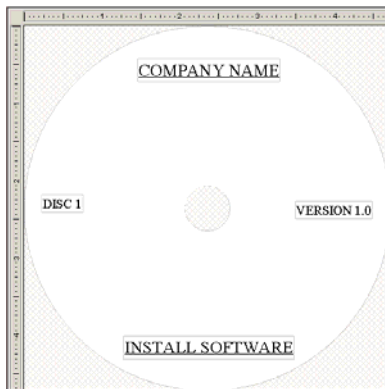
### Print Modes

- Text and Graphics
- Photo



## Printing Recommendations

Text and Graphics mode is used for printing mainly text information and small, simple graphics. Below are some examples for images in Fast, Normal and Best Modes:



*Text and Graphics – Fast*



*Text and Graphics – Normal*



*Text and Graphics – Best*

Photo Mode should be used when printing on the entire disc or when using detailed graphics. Here is an example:

*Photo – Normal, Best,  
and 4800x1200 Modes*



## About Tab

The About tab provides you with contact information for the worldwide Microboards offices.

# Manual Software Re-Installation

This section will only apply to a manual re-installation of the SureThing software package. If you have not yet installed the G3 Auto Printer using the Installer, it is recommended that you do so.

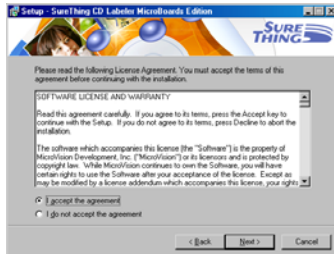
There are 3 methods of reinstalling SureThing should the need arise:

- A. **(Recommended)** Insert the Microboards G3 Auto Printer Installation CD into the CD/DVD ROM drive on your computer and select the **Repair** option when the installer starts. Click the **SureThing Disc Labeler** button to reinstall SureThing.

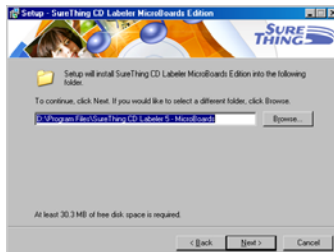
Follow these steps once the SureThing installer launches:



1. Click **Next** to continue.



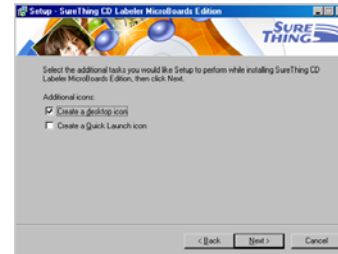
2. Once the User License screen appears, select **I Accept** and click the **Next** button.



3. If you wish to change the default Install directory, it can be done here. Click **Next** when completed.



4. Click **Next** to add a shortcut in the Start Menu.



5. Choose to add an icon to your desktop and/or a folder in the Start Menu. Once selected, click **Next**.
6. Click **Install** to begin copying the files.



7. Remove the check to launch SureThing at this time, then click **Finish**.

- B. Alternately, you can open the **Applications** directory on the Installation CD and run **SureThing.exe** to install SureThing manually. Follow the on-screen instructions as shown in steps 1-7 above.
- C. The SureThing installer was also added to your hard drive in the event that you need to reinstall but do not have access to the Installation CD. Run **SureThing.exe** in the **C:\Program Files\Microboards\G3 Installer\Applications** directory on your hard drive. Follow the on-screen instructions as shown in steps 1-7 above.

# Troubleshooting

---

## Printer not printing:

1. Confirm the G3 Auto Printer is plugged into a power source and is turned on. The ON/OFF switch is located at the back of the unit, above the power cable connector.
2. Confirm the green light on the power button is lit on the Control Panel. If AC power is on and the green light is off, press the power button on the Control Panel and wait for several seconds. If the light still does not come on, contact Microboards Technical Support.
3. If the Media Light on the Control Panel is on (not flashing), the Output Bin is full. Empty the Output Bin to continue.
4. Confirm the G3 Auto Printer is connected to the computer. This can be checked by clicking on Start, going to Settings and selecting Printers. Confirm the printer is listed and is active. If the icon is not active, make sure the Use Printer Offline is not selected. Also check to make sure the correct printer port is selected.
5. Confirm that the **Microboards GX-300HC Ink Cartridge** is being used. The G3 Auto Printer will not function with any other cartridge!



---

## Disc Loading error:

1. If a disc is not loaded correctly, an error message will be displayed on your PC. Check to see if there are any discs on the belt. Remove any discs that are left on the belt.
2. Lift the cover and check for any discs on the front deck of the G3 Auto Printer. Remove any discs found on the belts. Close the cover.
3. Next, reload the input bin and click the OK button on the error message to continue. The system will load the next disc and continue printing the remaining discs for that job.

---

## Low Ink indication:

Before each disc is printed, the ink levels are checked. If the level of any one color has reached 10%, a warning message will be displayed on your PC and printing will be temporarily suspended. You can either change the cartridge at this point and click OK, or click OK to continue printing using the same cartridge.

If you continue with the same cartridge, printing will continue uninterrupted until the ink level reaches 5%. The low ink level warning will be displayed once more. Again, either change the cartridge or continue.

Once the ink level reaches 3% or less, the warning will be displayed before each print.

**It is strongly recommended that you replace the cartridge at this point.**

If you notice poor ink quality or a missing color in your prints at any time, replace the ink cartridge.

# Printing Specifications

**Print Speed:**

Depends upon percentage of coverage and print mode selected:

Photo Normal Mode: Approx. 45 seconds for 100% full-color coverage

Text & Graphics Best Mode: Approx. 20 seconds for 100% full-color coverage

Text & Graphics Normal Mode: Approx. 12 seconds for 20% coverage

**Ink Cartridge Types:**

Microboards GX-300HC

**Media Types:**

Printable-surface 120mm CD-R or DVD-R

**Label Editing Software:**

SureThing™ Disc Labeler Software for Windows included

**Maximum Print Width:**

4.72" (120mm)

**Power Supply:**

Auto Detect AC Power:

90VAC – 240VAC, 47Hz – 63Hz

**Warranty:**

One Year Limited Warranty

**Print Technology:**

HP Thermal Inkjet

Print Quality, Black: 600 x 600 dpi, with HP PhotoREt

Print Quality, Color: up to 4800 x 1200 optimized dpi, with HP PhotoREt

Color Technology: HP PhotoREt

**Memory:**

64MB

**Connectivity:**

USB 2.0 recommended

## Technical Support

For technical questions or support issues, contact Microboards Technology technical support:

**United States**

PH: 952-556-1639

FAX: 952-556-1628

[support@microboards.com](mailto:support@microboards.com)

[www.microboards.com](http://www.microboards.com)

**Europe**

PH: +44 (0) 845 230 7800

[www.microboards.co.uk](http://www.microboards.co.uk)

**Japan**

PH: 03-3561-2266

[www.microboards.co.jp](http://www.microboards.co.jp)

Please have the Model and Serial Number of your G3 Auto Printer available when contacting Technical Support.



Any unauthorized modification to this equipment may result in the revocation by the FCC of the user's authority to operate this equipment.

NOTE: This equipment has been tested and found to comply with the limits for a Class B digital device, pursuant to Part 15 of the FCC Rules. These limits are designed to provide reasonable protection against harmful interference in a residential installation. This equipment generates, uses, and can radiate radio frequency energy and, if not installed and used in accordance with the instructions, may cause harmful interference to radio communications. However, there is no guarantee that interference will not occur in a particular installation. If this equipment does cause harmful interference to radio or television reception, which can be determined by turning the equipment off and on, the user is encouraged to try to correct the interference by one or more of the following measures:

- Reorient or relocate the receiving antenna
- Increase the separation between the equipment and antenna
- Connect the equipment into an outlet on a circuit different than that to which the receiver is connected
- Consult the dealer or an experienced radio/TV technician for help



This product is in conformity with the EMC Directive (89/336/EEC) through compliance with the following European standards: EN 55022, EN 55024. The CE mark has been affixed in accordance with the CE Marking Directive 93/68/EEC.

**Canadian Department of Communications (DOC) Statement**

This Class B digital apparatus complies with the Canadian ICES-003 Issue 4:2004. Cet appareil numérique de la classe B est conforme a la norme NMB-003 du Canada.

