

## USE, CARE, AND INSTALLATION GUIDE

Read all Instructions before Installing and operating this appliance

MODELS: AK7000, AK7036, AK7042 Tempest I

### IMPORTANT SAFETY NOTICE

## WARNING

### Installation

The installation in this manual is intended for qualified installers, service technicians or persons with similar qualified background. DO NOT attempt to install this appliance yourself. Injury could result from installing the unit due to lack of appropriate electrical and technical background.

All electrical wiring must be properly installed, insulated and grounded. Overly accumulated grease in old duct work should be cleaned out or duct work should be replaced if necessary to avoid the possibility of a grease fire. Check all joints on duct work to insure proper connection and all joints should be properly taped.

### Operations

Read all instructions in this manual before operating the appliance. Save these instructions for future reference.

Always leave safety grills and filters in place. Without these components, operating blowers could catch on to hair, fingers and loose clothing.

NEVER dispose cigarette ashes, ignitable substances, or any foreign objects into blowers.

NEVER leave cooking unattended. When frying, oil in the pan can easily overheat and catch fire. The risk of self combustion is higher when the oil has been used several times.

### Cleaning

The saturation of greasy residue in the blower and filters may cause increased inflammability. Keep unit clean and free of grease and residue build-up at all times to prevent possible fires.

Filters must be cleaned periodically and free from accumulation of cooking residue (see cleaning instructions inside). Old and worn filters must be replaced immediately. Do not operate blowers when filters are removed. Never disassemble parts to clean without proper instructions. Disassembly is recommended to be performed by qualified personnel only. Call our service center for removal instructions.

The manufacturer declines all responsibility in the event of failure to observe the instructions given here for installation, maintenance and suitable use of the product. The manufacturer further declines all responsibility for injury due to negligence and the warranty of the unit automatically expires due to improper maintenance.

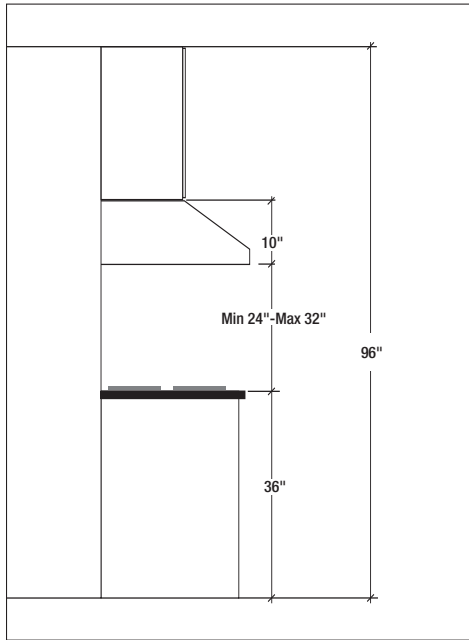
*\* Please check for latest specification revisions before any custom work or cutouts.*

## LIST OF MATERIALS

- 1 - Hood
- 2 - Baffle filters (3-36", 3-42")
- 2 - Halogen light bulbs (pre installed)
- 1 - Hardware packet containing:
  - 4 - 2" drywall screws
  - 4 - 1 1/2" drywall screws
  - 4 - 1" drywall screws
  - 4 - 1/2" washers
  - 3 - wire connectors
  - 1 - 6 to 3 1/4 x 10 rectangular transition adapter

# INSTALLATION

## MOUNT HEIGHTS



Minimum mount height between range top to hood bottom should be no less than 24".

Maximum mount height should be no higher than 32".

It is important to install the hood at the proper mounting height. Hoods mounted too low could result in heat damage and fire hazard; while hoods mounted too high will be hard to reach and will lose its performance and efficiency.

If available, also refer range manufacturer's height clearance requirements and recommended hood mounting height above range.

## DUCTING

A minimum of 6" round or 3-1/4" x 10" rectangular duct must be used to maintain maximum air flow efficiency.

Always use rigid type metal ducts only. Flexible ducts could restrict air flow by up to 50%.

Also use calculation (on right) to compute total available duct run when using elbows, transitions and caps.

ALWAYS, when possible, reduce the number or transitions and turns. If long duct run is required, increase duct size from 6" to 7" or 8". If a reducer is used, install a long reducer instead of a pancake reducer. Reduce duct size as far away from opening as possible.

If turns or transitions are required: Install as far away from opening and as far apart, between 2, as possible.

### Minimum Duct Size:

Round:  
6" minimum  
Rectangular:  
3-1/4" x 10"

### Duct Run Calculation:

#### Maximum run

6" or 3-1/4" x 10" duct	100 FT
<b>Deduct:</b>	
each 90 Elbow used	15 FT
each 45 elbow used	9 FT
each 6" to 3/14 x 10" transition used	1 FT
each 3/14 x 10" to 6"	
each 3/14 x 10" to 6" transition used	5 FT
Side Wall Cap w/ damper	30 FT
Roof Cap	30 FT

e.g. - 1 roof cap, 2x90 elbows, 1 x 45 elbow used:  
=30' + 30' + 9' =69' used, 31' available for straight duct runs.

# INSTALLATION

## DUCTING

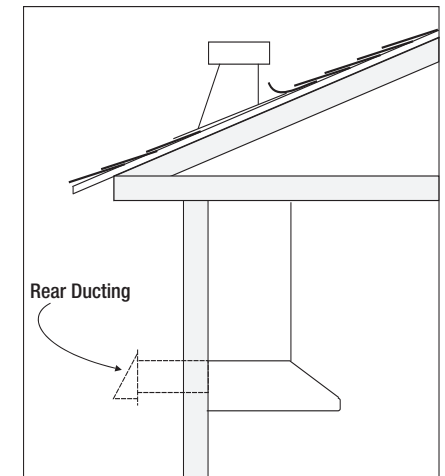
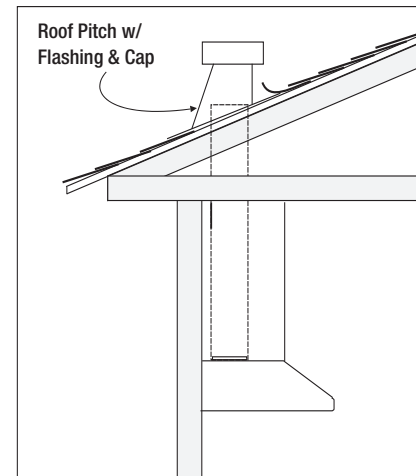
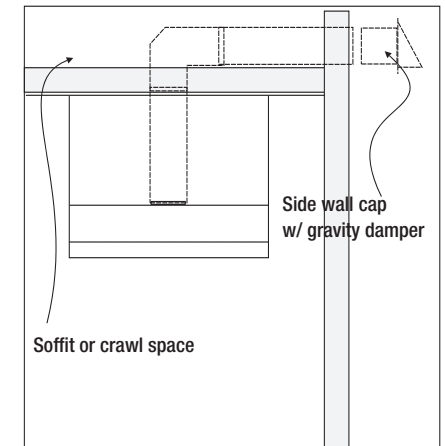
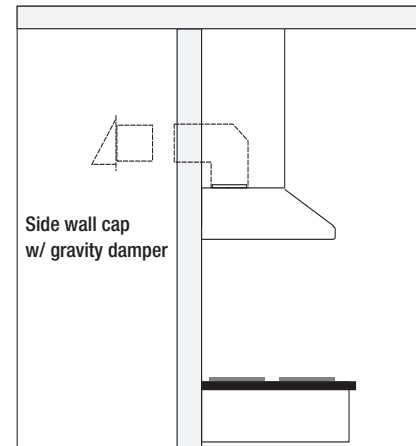
### WARNING FIRE HAZARD

NEVER exhaust air or terminate duct work into spaces between walls, crawl spaces, ceiling, attics or garages. All exhaust must be ducted to the outside.

Use metal ductwork only.

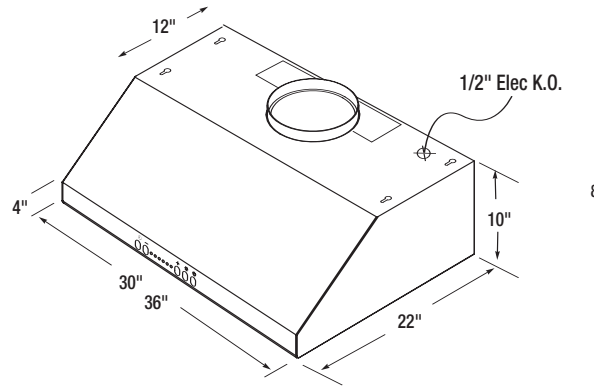
Fasten all connections with sheet metal screws and tape all joints w/ certified Silver Tape or Duct Tape.

### Some Ducting Options:



# INSTALLATION

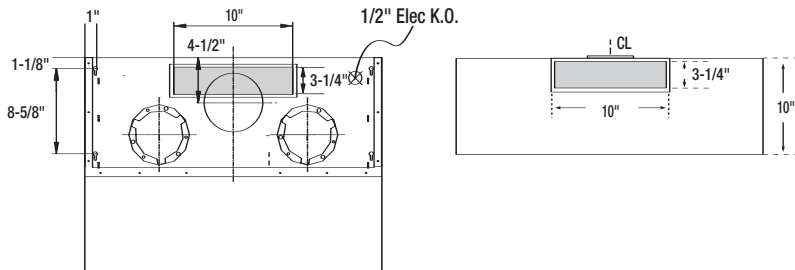
## SPECIFICATIONS



8

TOP VIEW

REAR VIEW



1-1/8"  
8-5/8"

# INSTALLATION

## MOUNTING THE RANGEHOOD

### ELECTRICAL

#### WARNING

All Electrical work must be performed by qualified electrician or person with similar technical know how and background.

For personal safety, remove house fuse or open circuit breaker before beginning installation. Do not use extension cord or adapter plug with this appliance.

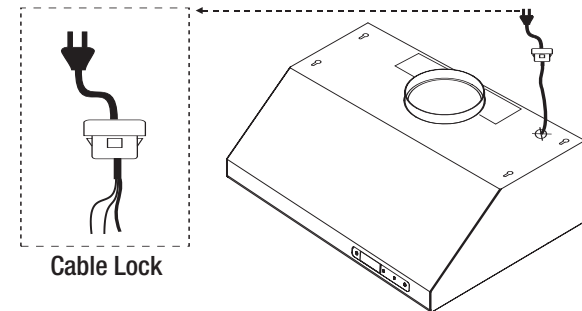
Follow National electrical codes or prevailing local codes and ordinances.

#### Electrical Supply:

This appliance requires a 120V 60Hz electrical supply., and connected to an individual, properly grounded branch circuit, protected by a 15 or 20 ampere circuit breaker or time delay fuse. Wiring must be 2 wire w/ ground. Please also refer Electrical Diagram labeled on product.

#### Cable Lock:

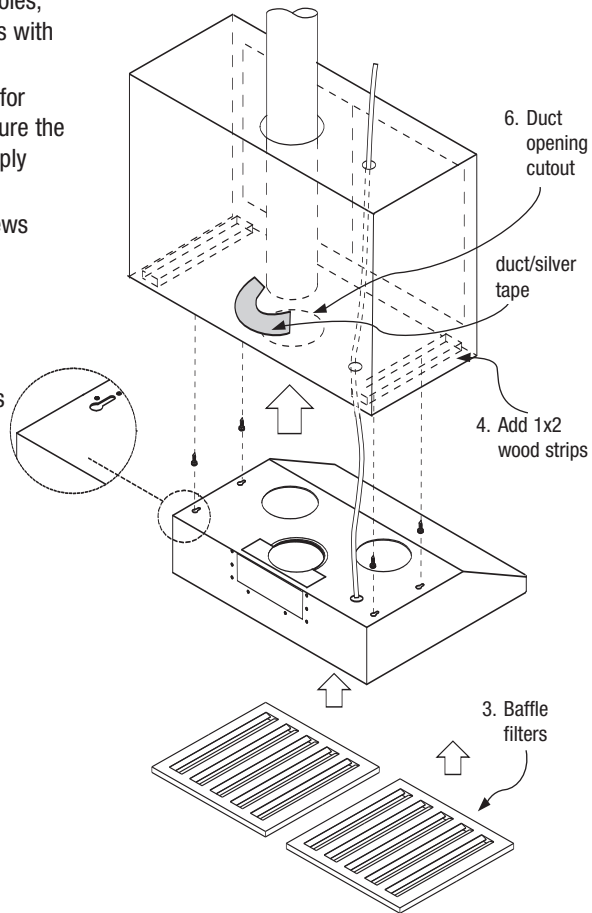
A cable locking connector (not supplied) might also be required by local codes. Check with local requirements and codes, purchase and install appropriate connector if necessary.



# INSTALLATION

## MOUNTING THE RANGEHOOD

1. This range hood is mounted under a kitchen cabinet unit.
2. Select preferred duct location on rear or top of unit. (See page 6 & 7 for ducting conversion options)
3. Begin installation by temporarily removing the baffle filters.
4. Reinforce cabinet base with 1x2 wood strips if additional strengthening is required.
5. Temporarily position the range hood in the desired mounting location. Measure and mark the mounting holes, duct and electrical access locations with a pencil.
6. Drill/cut out the required openings for duct and electrical access; make sure the duct opening is large enough to apply duct tape.
7. Fasten hood onto cabinet with screws and washers provided.
8. Install electrical.
9. Install duct work and duct-tape.
10. Reinstall the baffle filters.
11. Power up hood and check for leaks around duct-tape.



# INSTALLATION

## CONVERTIBLE OPTIONS

This range hood is equipped with the option of a 6" vertical discharge, 3 1/4"x10" vertical discharge, or 3 1/4"x10" rear discharge. Additional accessories are provided to convert to either of the above discharge methods.

### Convertible Options

Vertical discharge	6" round
Vertical discharge	3 1/4"x10"
Horizontal rear discharge	3 1/4"x10"

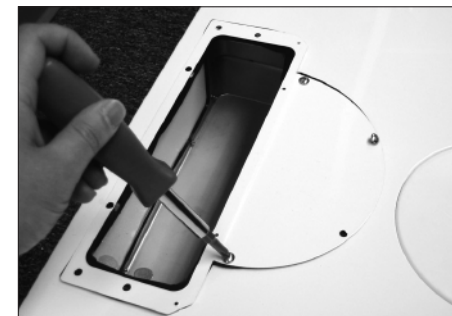
### Convertible Accessories

Round to rectangular transition adaptor
Rectangular to round transition adaptor (pre-mounted)
Gasket (pre-mounted)
Rectangular rear cap (pre-mounted)
3 1/4"x10" starting collar

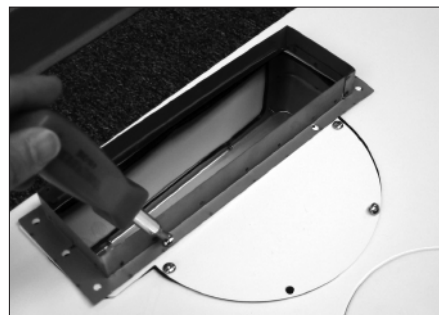
## 3 1/4"x10" Vertical Discharge



1. Remove pre-mounted 6" transition adaptor or duct opening. Leave attached gasket in its original place.



2. Place rectangular transition adaptor as shown over opening. Leave attached gasket in its original place and by first installing 4 screws on half round section.

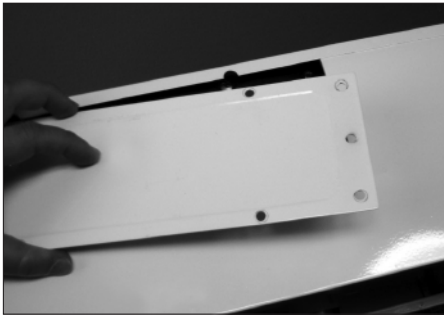


3. Mount the 3-1/4"x10" starting collar on top of transition piece with remaining screws.

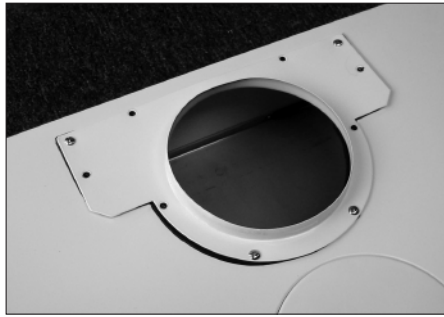
## INSTALLATION

### CONVERTIBLE OPTIONS

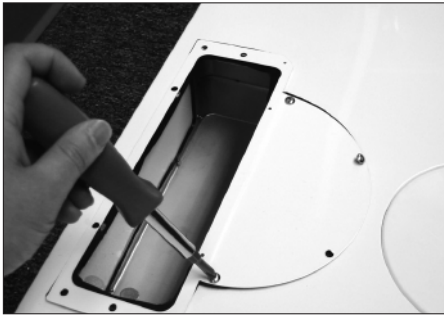
#### 3 1/4"x10" Rear Discharge



1. At rear of range hood, remove all screws on pre-mounted rear rectangular cap and remove cap.



2. Remove top pre-mounted transition piece. Leave attached gasket in its original place.



3. Mount rectangular transition piece at opening with gasket as shown.



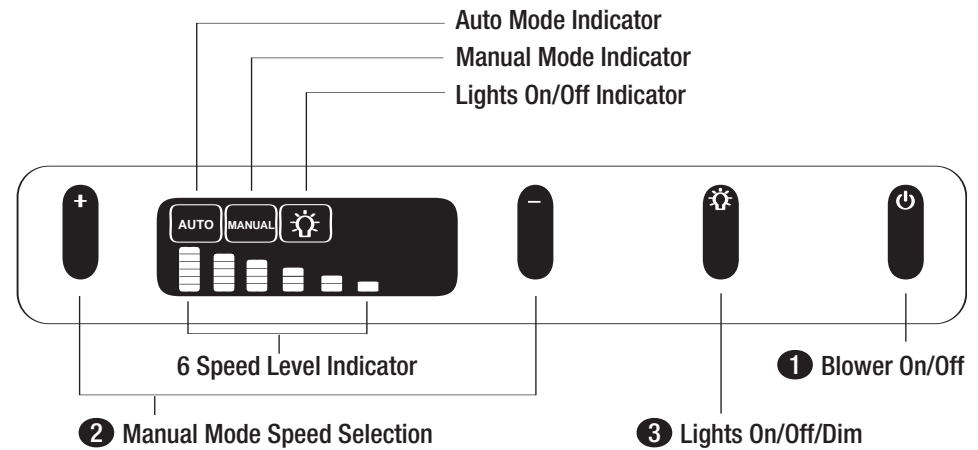
4. Mount rectangular cap (previously removed) on top of transition adaptor.



5. Mount starting collar (provided) at rear discharge opening with gasket.





## CONTROLS & FEATURES

### CONTROLS & FEATURES


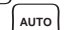


The control features on this range hood are *touchless*; to activate simply position your finger approximately 1/4" in front of the selected switch.

#### 1 Blower On/Off

By pressing , the blower is switched On and Off. When switched on, the blower starts up on speed level 6 in auto mode , and will automatically adjust the fan speed accordingly. While in auto mode , the manual mode  indicator icon will flash indicating that you can still manually change speeds by selecting the + or - controls.

#### Standby Mode

If the range hood was in auto mode  prior to shutdown, and detects any heat from below, the blower will switch back on in auto mode  to speed level 6 and then adjust itself accordingly.

#### 2 Manual Mode Speed Selection

Selecting + or - overrides all auto mode controls and activates manual mode  as indicated.

#### 3 Lights On/Off/Dim

Switch lights On  by selecting this switch. To Dim lights, activate  again. Selecting  one more time, will turn lights Off.

#### Touchless Controls Manual Power Off Switch

Should you wish to manually turn off the touchless control for cleaning or safety, an electric toggle switch is located inside the range hood (behind the baffle filters on the right hand side of the range hood) Toggle between 1 (on) or 0 (off).

## MAINTENANCE

### CLEANING

#### Surface Maintenance:

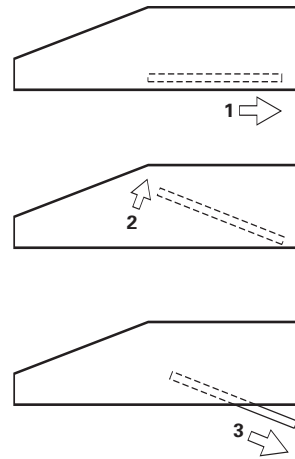
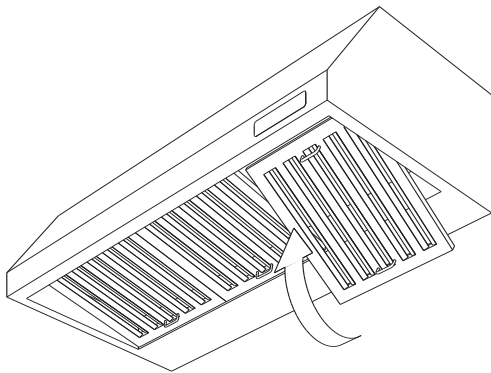
Clean periodically with hot soapy water and clean cotton cloth. Do not use corrosive or abrasive detergent (e.g. comet powder scrub, EZ-Off oven cleaner), or steel wool/scoring pads which will scratch and damage surface.

For heavier soil use liquid degreaser such as 'Formula 409' or 'Fantastic' brand cleaner.

After cleaning, you may use non abrasive stainless steel polish/ cleaners such as 3M or ZEP, to polish and buff out the stainless luster and grain. Always scrub lightly, with clean cotton cloth, and with the grain.

#### Stainless Steel Baffled Filters

The stainless steel baffled filters fitted by the factory are intended to trap residue and grease from cooking. Although the filters never need replacement, they are required to be kept clean after approximately every 30 hours of use.



#### Removing Baffled Filters

1. Pull filter toward back of range hood using handles.
2. Pivot filter front upward.
3. Remove downwards to the rear.

## MAINTENANCE

### LIGHTS

#### Replacing Light Bulbs

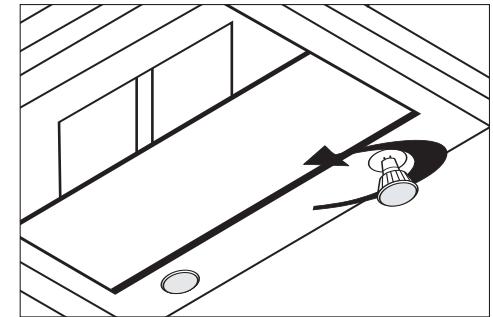
**CAUTION:** Light bulb becomes extremely hot when turned on. **DO NOT** touch bulb until switched off and cooled. Touching hot bulbs could cause serious burns.

Make sure all power is turned off and bulbs are not hot.

Remove by turning bulb counter clockwise.

If bulbs are difficult to turn due to prolonged use, firmly attach a glass suction cup approx. the diameter of the bulb and turn.

Replacement bulbs are available at specialty lighting stores. Purchase type GU10 120V 50W halogen bulbs. Or to order bulbs, please call our service center: **888-880-8368** or online parts store: [www.zephyronline.com](http://www.zephyronline.com)



#### OPTIONAL ACCESSORIES

<b>Model:</b>	<b>AK7000</b>	<b>AK7036</b>	<b>AK7042</b>
Back Splash	AK0710	AK0716	AK0712

## WARRANTY

### TO OBTAIN SERVICE UNDER WARRANTY:

You must present proof of original purchase date.  
Please keep a copy of your dated proof of purchase (sales slip)  
in order to obtain service under warranty.

#### One Year Service Repair Warranty:

For one year from date of original purchase, we will provide free of charge, service labor to repair any failed parts or components due to manufacturing defects.

#### Two Years Parts Warranty:

For two years from date of original purchase, we will provide free of charge, nonconsumable replacement parts or components that failed due to manufacturing defects.

Consumable parts not covered by this warranty include: Light Bulbs, Metal and Carbon Filters.

#### Who is Covered:

This warranty is extended to the original purchaser for products purchased for ordinary home use in the 48 mainland states, Hawaii and Washington D.C.

**In Canada and Alaska, this warranty is Limited.** There might be costs associated with shipping the products to our designated service locations or you might need to pay service technician's travel costs, to have the appliance repaired in-home.

#### This Warranty will be Voided when:

Product damaged through negligence, misuse, abuse, accident.

Improper installation and failure to follow installation instructions. When product is used commercially or other than its intended purpose.

Damaged because of improper connection with equipment of other manufacturers.

Repaired or modified by anyone other than Zephyr's Authorized Agents.

#### What is Not Covered:

Consumable parts such as light bulbs, filters, and fuses.

Services outside of service area and the labor cost incurred in connection with the removal, shipping and reinstallation cost, nor does it cover any other contingent expenses.

The natural wear of finish, and wear due to improper maintenance, use of corrosive and abrasive cleaning products, pads, and oven cleaner products.

Chips, dents or cracks due to abuse, misuse, freight damage, or improper installation.

Service trips to your home to teach you how to use the product.

Damage of product caused by accident, fire, floods or act of God.

This warranty is valid in the United States and Canada. It is non-transferable and applies only to the original purchaser and does not extend to subsequent owners of this product. Any applicable implied warranties, including the warranty of merchantability, are limited in duration to a period of express warranty as provided herein beginning with the date of original purchase at retail and, no warranties, whether express or implied, shall apply to this product thereafter.

TO OBTAIN SERVICE UNDER WARRANTY  
or any Service Related Questions, please call:

**1-888-880-8368**

Have your product proof of purchase with date ready for warranty issues.

Or write to:

**Zephyr Corporation  
Service and Warranty Department  
395 Mendell Street  
San Francisco, CA 94124**

## Troubleshooting Procedures for AK7500, AK700

Issue	Cause	What to do
After installation, the unit doesn't work?	1. The power source is not turned ON.	1. Make sure the circuit breaker and the unit's power is ON.
	2. The power line and the cable locking connector is not connecting properly.	2. Check the power connection with the unit is connected properly.
	3. The switch board and control board wirings are disconnected.	3. Make sure the wirings between the switch board and control board are connected properly.
	4. On the switch board, Black/White wire or White wire is disconnected.	4. Make sure the Black/White wire or White wire connects properly.
	5. The switch board or control board is defective.	5. Change the switch board or control board.
Light works, but motor is not turning.	1. The motor is defective, possible seized.	1. Change the motor.
	2. The thermally protected system detects if the motor is too hot to operate and shuts the motor down.	2. The motor will function properly after the thermally protected system cool down.
	3. Damaged condenser.	3. Change the condenser.
	4. The Blue wire on the control board is disconnected.	4. Make sure the Blue wire on control board is connected properly.
The unit is vibrating.	1. The motor is not secure in place.	1. Tighten the motor in place.
	2. Damaged blower wheel.	2. Change the blower wheel.
	3. The hood is not secured in place.	3. Check the installation of the hood.
The motor is working, but the lights are not.	1. Defective halogen bulb.	1. Change the halogen bulb.
	2. The light bulb is loose.	2. Tighten the light bulb.
	3. The RED wire on control board is loosen.	3. Make sure the RED wire on control board is connected properly.
The hood is not venting out properly.	1. The hood might be hanging to high from the cook top.	1. Adjust the distance between the cook top and the bottom of the hood within 24" and 32" range.
	2. The wind from the opened windows or opened doors in the surrounding area are affecting the ventilation of the hood.	2. Close all the windows and doors to eliminate the outside wind flow.
	3. Blocking in the duct opening or duct work.	3. Remove all the blocking from the duct work or duct opening.
	4. The direction of duct opening is against the wind.	4. Adjust the duct opening direction.
	5. Using the wrong size of ducting.	5. Change the ducting to at least 8" or higher.
Heat lamp is not working.	1. Power on the heat lamp is not turning on.	1. Make sure the heat lamp power is ON.
	2. Heat lamp bulb is defective.	2. Change the heat lamp bulb.
	3. Heat lamp bulb is loose.	3. Tighten the heat lamp bulb.
Metal filter is vibrating.	1. Metal filter is loose.	1. Change the metal filter.
	2. Spring clip is broken.	2. Change the spring clip.
Temperature Sensor is not working.	1. The right upper corner of LCD display indicates "HI".	1. Change the sensor.
	2. The right upper corner of LCD display indicates "LO".	2. Change the sensor.
	3. The right upper corner of LCD display indicates "Err" after changing the Sensor.	3. Change the switch board.