

DR[®] *ALL-TERRAIN*[™] MOWER

Assembly, Installation & Maintenance Instructions for the 42" Lawn Mower Deck



Figure 1

Important!

Please read the Assembly, Installation & Maintenance Instructions as well as the Safety and Operating Instructions for the DR[®] All Terrain Mower to become familiar with the basic features of the DR[®] 42 Lawn Mower Deck before operating it.

Country Home Products, Inc.

Safety Information

We want you to enjoy years of productive use from your DR® 42 Lawn Mower. We don't want you to get injured, so please take a few moments to read the following guidelines for safely operating your new machine.

Dress Appropriately

- Wear safety glasses while mowing to protect your eyes from thrown objects.
- Wear shoes with non-slip treads when using your DR® 42 Lawn Mower. If you have safety shoes, we recommend that you wear them. Do not use the machine while barefoot or wearing open sandals.
- Wear long pants while mowing, and avoid loose clothing or jewelry, which might get caught in brush or on the mower's moving parts.
- Use ear muffs or ear plugs to protect your valuable hearing.
- We recommend wearing gloves while mowing.

Preparation

- Read these *Safety & Operating Instructions*, the *Safety & Operating Instructions* for the DR® All Terrain Mower as well as the engine manufacturer's owner's manual before you use the DR® All Terrain Mower with the DR® 42 attachment. Become familiar with the controls, engine and service recommendations to ensure the best performance from your machine.
- Inspect the area you'll be working in for hidden objects such as large rocks, logs, rope, wire, garden tools, etc., and remove these obstacles before mowing. Mowing over such obstacles could damage the machine and cause injury.

Operating the Machine Safely

- Keep bystanders at least 100 feet away from your work area at all times. Objects can be thrown far from the mower and at great speeds. To be safe, do not operate the machine near small children or pets, and never allow children to operate the mower. Disengage the blades and stop the engine when another person approaches.
- Be sure all blade and wheel controls are DISENGAGED before attempting to start the engine. Engage and disengage the blade control a few times to get used to it before mowing.
- NEVER remove the shields from the mower, or alter the deck in any way.



WARNING! Keep your hands and feet away from the blades, belts, chains, blade pulleys, and concealed areas while the engine is running. **NEVER reach under the deck when the engine is running.**

- ALWAYS shut off the engine and remove the spark plug wire prior to making any adjustments to the machine. If you have to stop to remove grass or debris from the underside of the deck, always disconnect the spark plug wire first.
- The exhaust area on the engine becomes very hot. Allow the engine to cool before doing maintenance or making adjustments.
- Keep combustible substances away from the engine when it is hot.
- When operating over uneven terrain and slopes, use EXTREME CAUTION and make sure you're on firm footing at all times.
- Mow only during the daylight hours.
- Use extra caution when mowing in wet, slippery conditions.
- ALWAYS OPERATE THE MOWER FROM BEHIND. Never pass or stand on the discharge (right) side or in front of machine when the engine is running.
- DO NOT, under any conditions, remove, cut, bend, weld or otherwise alter standard parts on your DR® 42 LAWN MOWER. This includes all shields and guards. Unauthorized modifications can make the equipment unsafe and may void your warranty.
- While using the DR® 42 LAWN MOWER, don't hurry or take things for granted. When in doubt about the equipment or your surroundings, stop the machine and take the time to look things over. Make sure that you have 100% control of the mower at all times.

Safety with Gasoline-Powered Machines

- Do not run the engine in an enclosed area or without proper ventilation.
- Store all fuel in containers specifically designed for this purpose. Plastic containers are more likely to prevent sediment and condensation problems.
- Fill the gasoline tank outdoors with the engine off. Don't handle gasoline if you or anyone nearby is smoking, or if you're near anything that could cause it to ignite or explode.
- If gas is spilled, do not attempt to start the engine. Move the machine away from the area of the spill and avoid creating any source of ignition until the gas vapors have dissipated. Wipe up any spilled fuel to prevent a fire hazard, and properly dispose of the waste.
- Allow the engine to cool completely before storing in any enclosure. Never store the machine near an open flame or spark with gas in the tank.
- Do not change the engine governor settings or modify the engine speed.

The Fine Print...

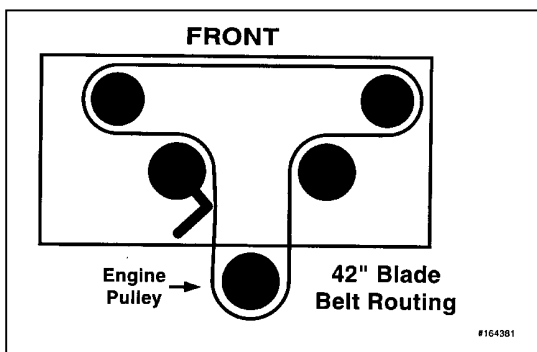
Country Home Products, Inc. reserves the right to discontinue, change and/ or improve its products at any time without notice or obligation to the purchaser. The descriptions and specifications contained in this manual were in effect at printing. Equipment described within this manual may be optional. Some illustrations may not be applicable to your machine.

Safety/Operation Labels

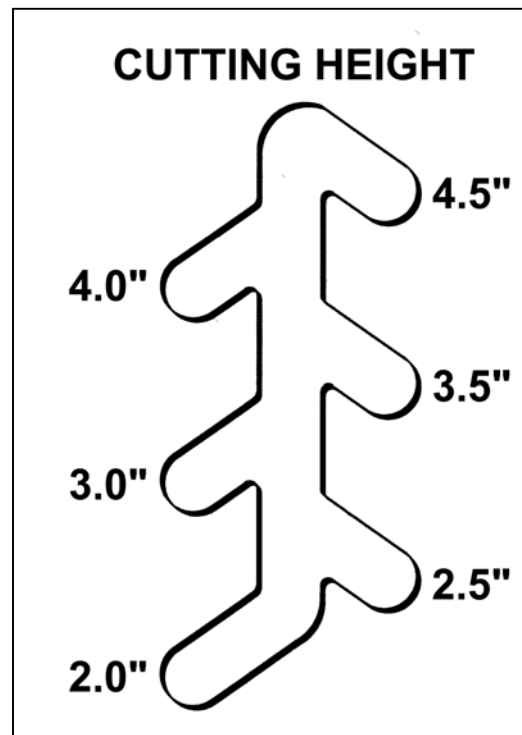
Always replace damaged or missing safety and operation labels immediately.



136491



164381



157641



179401

To Assemble the Lawn Mower Deck



WARNING! Always remove the spark plug wire before servicing your machine.

Tools & Supplies Needed:

- Pliers
- Hammer
- 1/2" socket or wrench

Mount the Front Caster Wheels

Mount the caster wheels on the front arms of the deck frame as shown in *Figure 1*.

- Insert the 4 black castor bushings into the top and bottom of the lawn deck frame for both castors. You may need to tap the bushings in with a hammer (*Figure 2*).
- Push the cotter pin as far as it will go as shown (*Figure 2*).
- Hold the tire with one hand to keep the axle from turning while bending the legs of the cotter pins with pliers.
- Bend the long leg first, then the shorter leg (*Figure 3*).

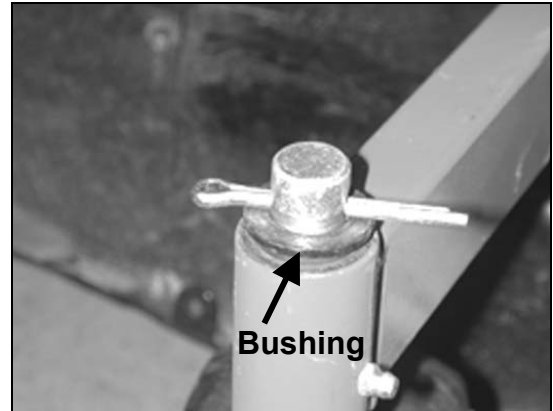


Figure 2



Figure 3



WARNING! If you remove the cotter pins, replace them with new ones 1/4" in diameter and 1-1/2" long. Repeated straightening and bending will break the cotter pins at the bend, and may cause the caster wheels to come off during operation causing severe damage or possible injury.

Install the Discharge Chute

1. If your lawn mower deck shipped separately from your DR® ALL-TERRAIN™ MOWER, you'll also need to install the discharge chute. From below, insert the bolts up through the holes in the deck.
2. Set the discharge chute in place, fit the bracket over the bolts and tighten with the nuts (*Figure 4*).

To Remove the Brush Deck

! WARNING! Always disconnect the spark plug wire before servicing your machine.

1. Remove the black belt guard by unscrewing the black knob, lifting the cover and pulling up and back to remove it.
2. Release the belt tension lever (*Figure 5*).
3. Remove the belt from the pulley (*Figure 6*).
4. Remove the pin and collar (*Figure 7*), then pull the power unit away from the deck.

Caution: Do not pull the deck away from the power unit unless you have someone holding the handlebars to prevent it from falling backward.

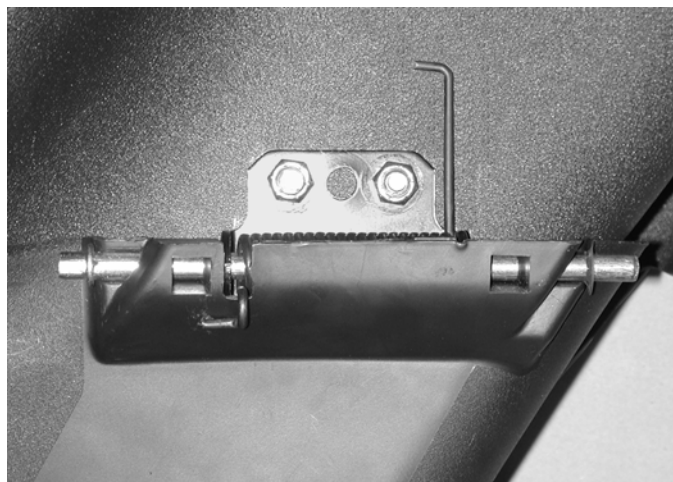


Figure 4

Belt Tension Lever

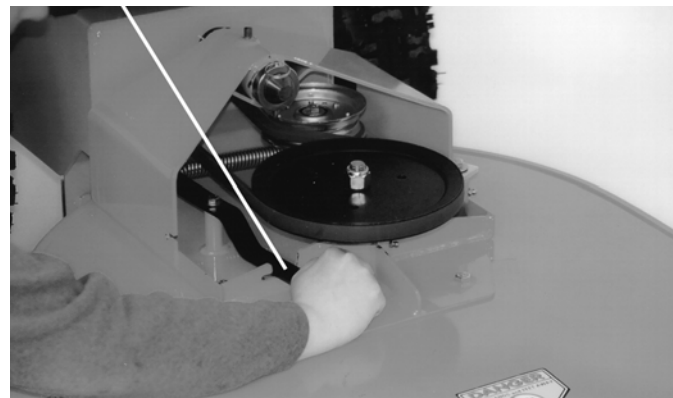


Figure 5

Belt Removed



Figure 6

Remove Pin & Collar



Figure 7

To Install the Lawn Mower Deck

Your lawn deck is shipped with the belt in place on the two blade drive pulleys. However, occasionally the belt comes off during shipping. If this occurs remove the two smaller belt covers with a ½" in wrench or socket and place the belt back on the pulleys as shown in *Figure 9* on Page 8.

1. Remove the black rectangular belt cover. Remove the two smaller black covers if necessary.
2. Line up the lawn mower deck with the power unit and mount the deck.
3. Attach the collar and insert the pin (*Figure 8*).
4. Mount the belt on engine pulley. If necessary, place the belt around the other pulleys as shown on the belt label except for the pulley attached to the belt release lever.
5. Push the belt release lever and set the out side of the belt against the flat idler pulley on the release lever. Hint: some people push the lever with their foot.
6. Replace the belt covers.

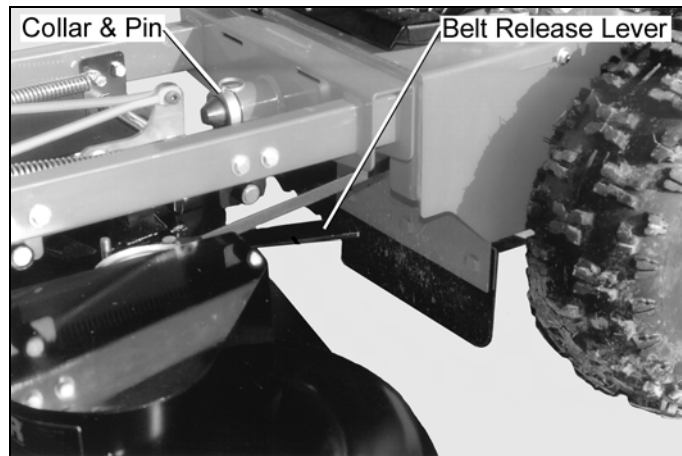


Figure 8

Maintenance

To Replace the Deck Belt

! WARNING! Always disconnect the spark plug wire before servicing your machine.

Tools Needed:

- 7/16" wrench and/or socket
 - 1/2" wrench
 - 3/16" Allen wrench
1. Remove the black rectangular belt cover.
 2. Remove the two smaller black belt covers.
 3. Push the belt release lever.
 4. Remove the belt from the deck pulleys and the engine pulley.
 5. Remove the lower bolt on the rear hanger plates (*Figure 10*). Swing the hanger plates out of the way so the belt clears. Remove the belt.
 6. To mount the new belt, follow the above procedure in reverse. See *Figure 9* for correct belt travel on the pulleys.

Lubrication

! WARNING! Always disconnect the spark plug wire before servicing your machine.

Tools & Supplies Needed:

- Flexible hose grease gun
- Lithium grease
- FLUID FILM® or similar lubricant

Unless instructed otherwise, pump only until you feel slight resistance (1-2 pumps).

1. Grease the fittings on the front caster wheels (*Figure 11*).
2. Grease the fittings on the lawn deck frame where the castors swivel. (Page 5, *Figure 3*).

Tire Pressure

Maximum tire pressure is 46 psi in each front caster wheel.

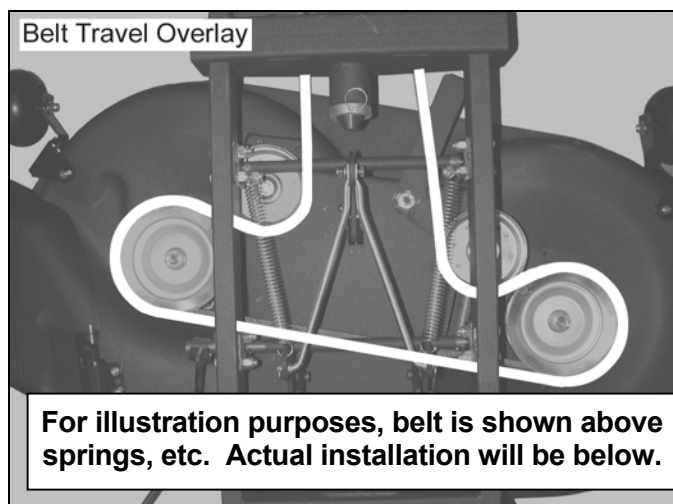


Figure 9

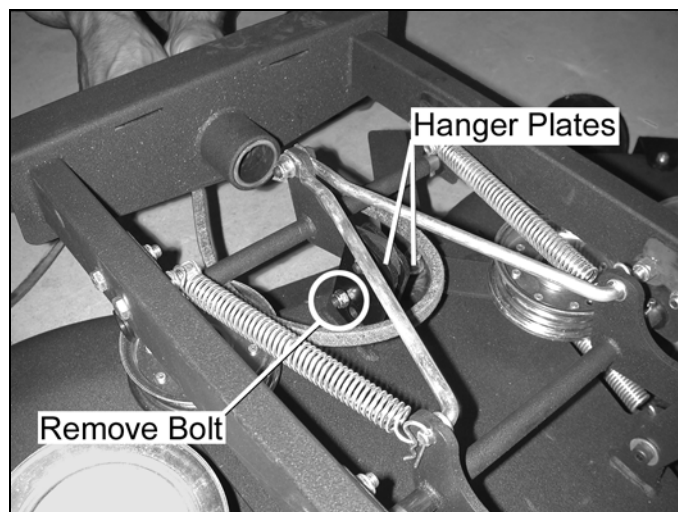


Figure 10

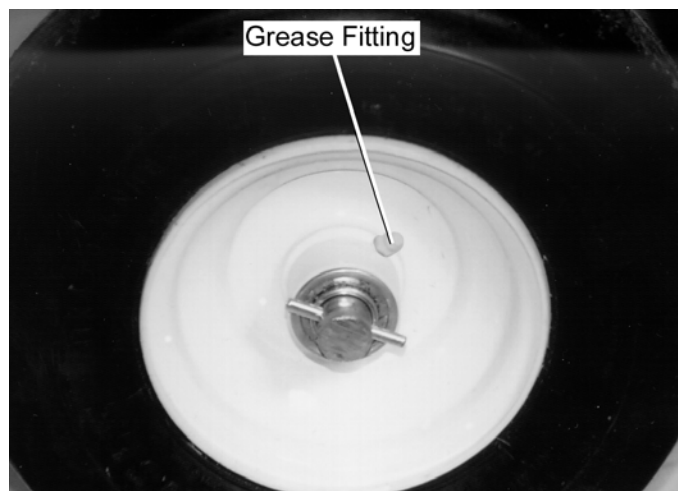


Figure 11

To Remove the Blades



WARNING! Always disconnect the spark plug wire before servicing your machine.

Tools Needed:

- 9/16" wrench or socket
- Rag or gloves to handle the blade

Note: You may want to block the blade with a piece of wood between the blade and the deck to hold it while turning the nut.

1. Remove the blade bolt, lock washer and blade washer.

Caution: Be aware of the sharp blade when pushing or pulling the wrench.

2. Remove the blade.
3. Repeat with the other blade.

To Replace the Blades

1. Mount the blade, blade washer, lock washer and blade bolt, in that order, and tighten securely (Torque 30-40 ft-lbs.).

Instructions for Leveling the DR[®] 42 Lawn Deck

The DR[®] 42 Lawn Deck settings made at the factory are suitable for most purposes, however leveling adjustments can be made if desired.



WARNING! Always disconnect the spark plug wire before servicing your machine.

Tools Needed:

- 1/2" wrench or adjustable wrench
- 3/16" hex key

Note: All references to Left and Right are from the Operator's position.

1. Move the machine to a level area.
2. Turn the machine off and disconnect the spark plug wire.
3. Remove the belt covers and locate the adjustment brackets (*Figure 12*).
4. Level the deck from front to back:

Note: You should adjust the deck so the back is 1/4" higher than the front. This will give you the best cut.

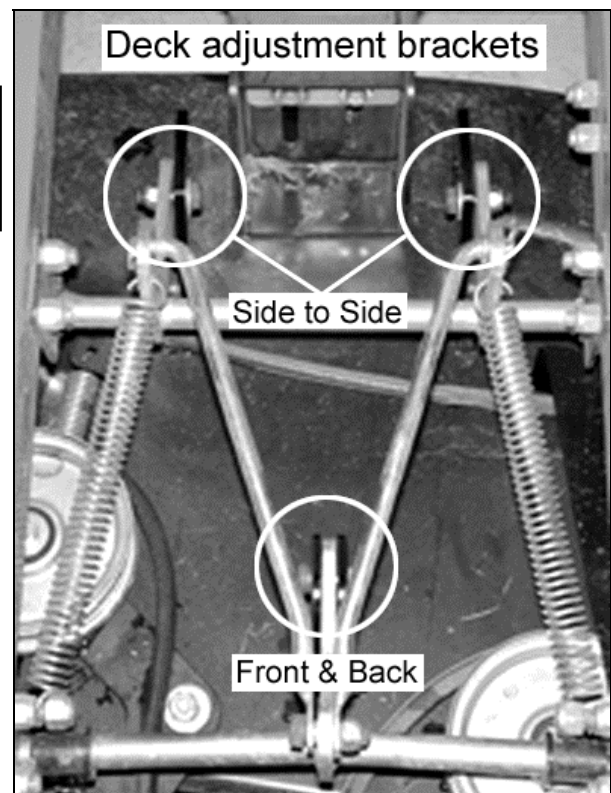


Figure 12

- Measure the distance from the ground to the deck at the front and back of the deck (*Figure 13*).
- Adjust the deck from front to back as needed by moving to a different hole in the rear adjustment bracket (*Figure 14*). Each hole in the top of the bracket will adjust the deck height by $1/16"$.
- Fine adjustment of the front to rear deck tilt (less than $1/4"$ change) is accomplished by moving both front bracket-mounting bolts to different holes in the adjustment brackets (*Figure 15*). Each hole change in the front brackets will adjust the rear deck height by $1/16"$.
- Each hole in the bottom of the rear brackets will raise or lower the rear of the deck by $1/2"$. The rear of the deck can be lowered an additional $1/2"$ by using the outside hole in the top of the rear bracket.
- Coarse adjustment of the front to rear deck tilt (greater than $1/4"$ change) is accomplished by moving the bolts in the bottom holes of the rear brackets to raise or lower the rear of the deck by $1/2"$. The rear of the deck can be lowered an additional $1/2"$ by moving the bolts in the top holes of the rear bracket to the outside holes.

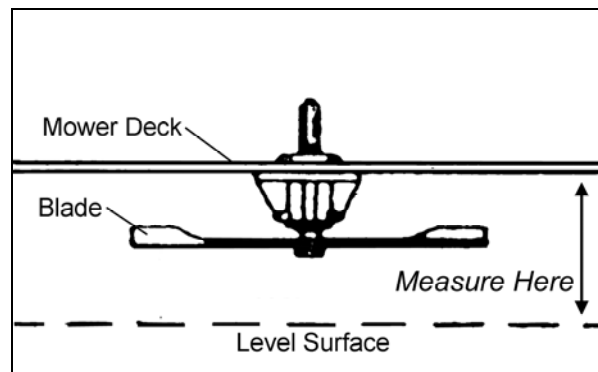


Figure 13

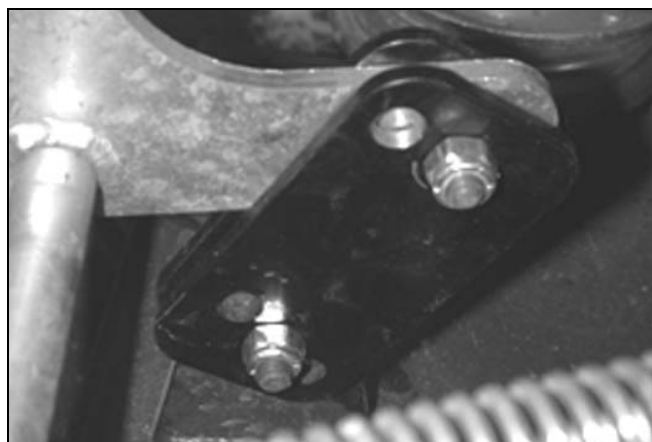


Figure 14

5. Level the deck from side to side:
 - Measure the distance from the ground to the deck on the left and right sides of the deck (*Figure 13*).
 - Adjust the deck as needed by moving to a different hole in the bracket (*Figure 15*). Each hole in the bracket will change the deck height on that side by $1/4"$.

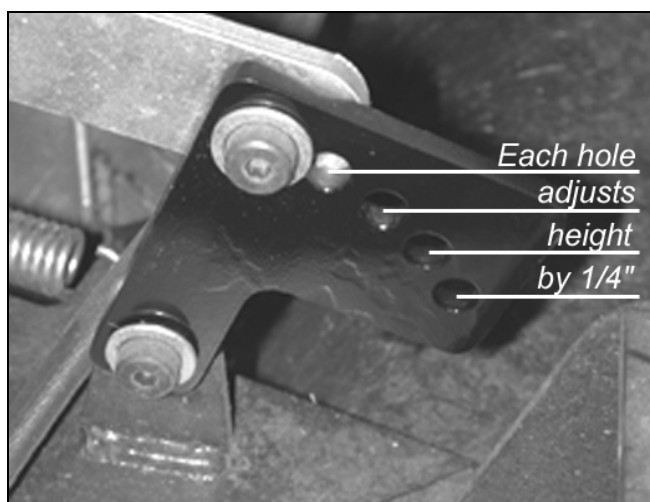


Figure 15

Adjusting the Cutting Height

You can adjust the cutting height of the mower in 1/2" increments by moving the lever on the side of the deck (*Figure 16*).

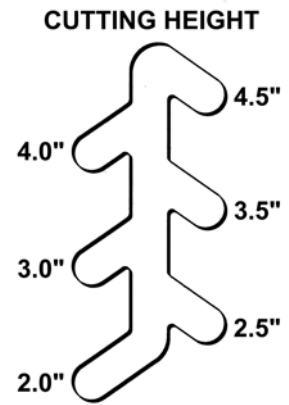


Figure 16

Mowing Tips for Best Performance

Turns

- Use a low gear when turning. This will give you better control and a cleaner cut.

Slopes

- Use a low gear on slopes for better control, and avoid shifting gears until you're on flatter terrain. Be ready to use the brake, if necessary.

Reverse

- Disengage the blade before shifting into reverse and backing up. Mowing in reverse is not safe.
- Be very careful of your footing when operating the machine in reverse. Know what's behind you and take your time.
- If you find it difficult to shift into reverse, lightly feather the clutch lever as you pull the shift lever into reverse, then quickly release the clutch lever.

Heavy/Wet Grass

- Be very careful of your footing when mowing in wet conditions. Avoid steep slopes and other possibly slippery areas.
- The best cut is achieved by mowing when the grass is dry. If you have to mow when the grass is wet, use a lower, slower speed.
- We do not recommend using the optional mulching plate in wet and heavy growth.

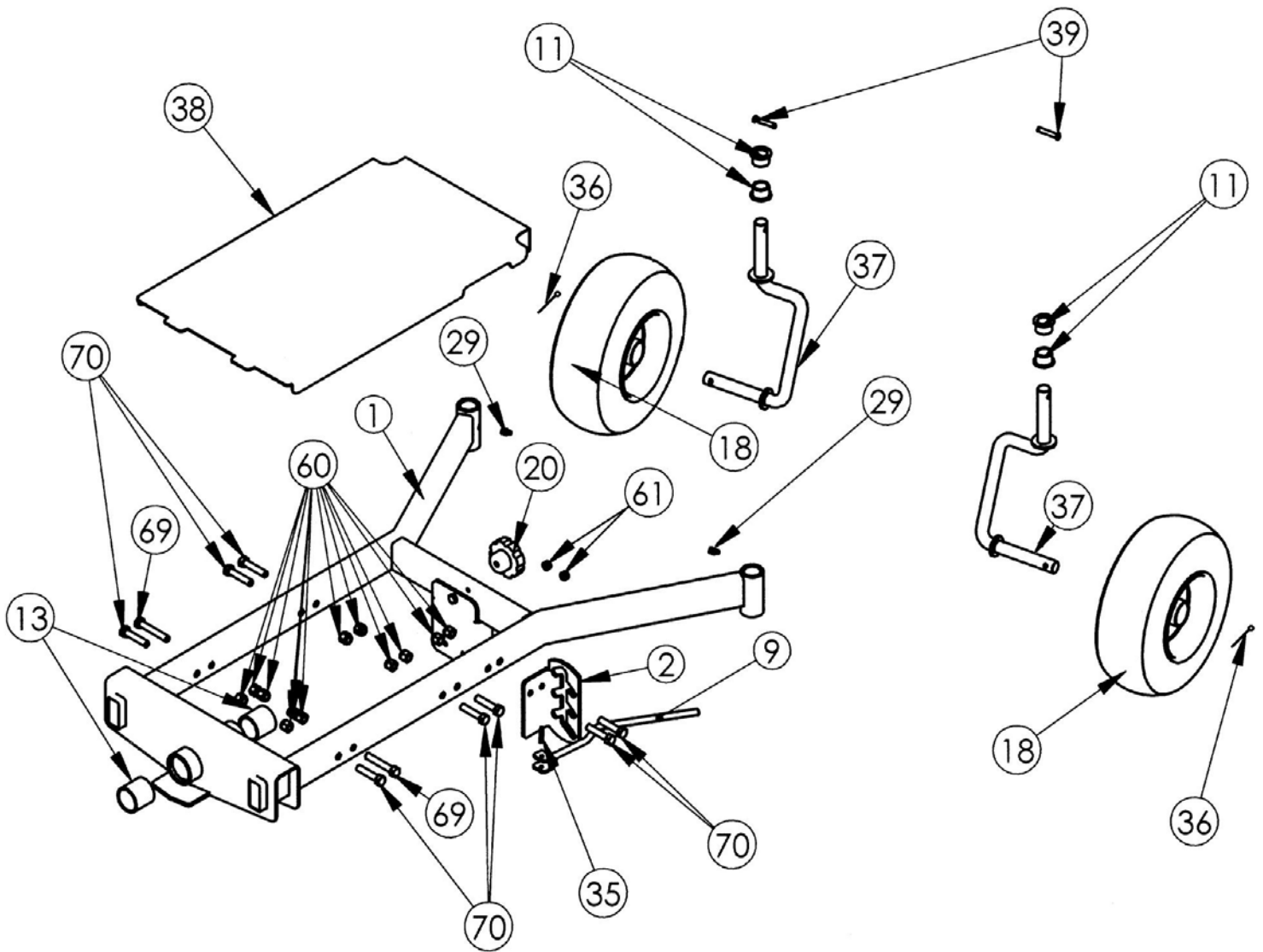
Other Checks

- Routinely check all the fasteners for looseness.
- Inspect, replace or sharpen and balance the blades if they become dull. Never try to straighten a bent blade. Dull or bent blades can cause excessive vibration and wear.
- Be sure to replace the blades in the proper orientation.
- If your deck lacks power, check the belt for wear. Also check the blade drive pulleys for looseness. If you find a loose pulley, remove the pulley and inspect the pulley hub and blade spindle and replace if worn or damaged. The pulley is designed to shear with severe loads or impact.
- Immediately stop the mower and turn off the power unit if you accidentally hit anything. Check everything thoroughly before you continue.

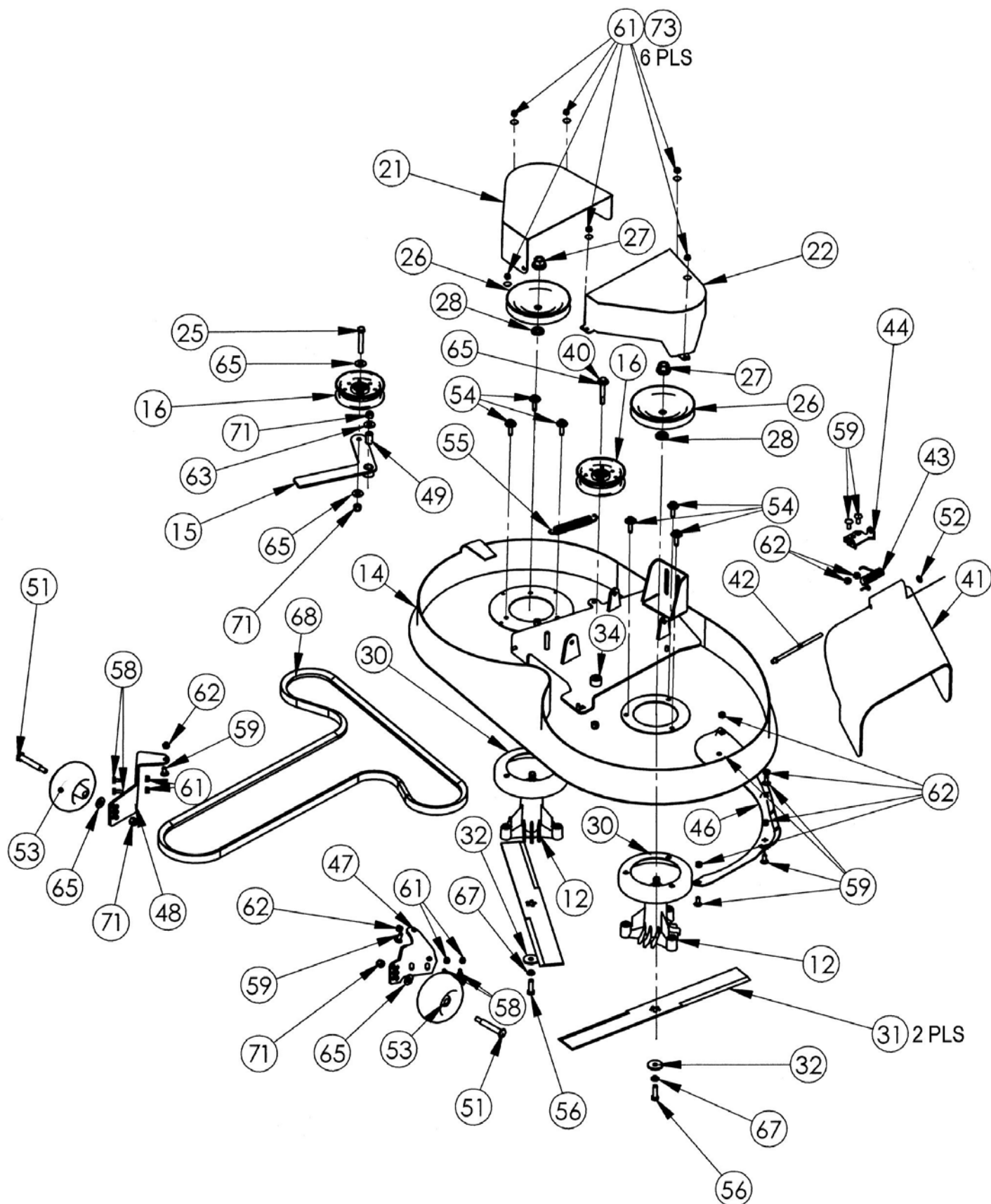
42" Lawn Mower Deck Parts List

Ref#	Part#	Description	Ref#	Part#	Description
1	151501	LAWN DECK FRAME, 42"	38	160851	MAIN BELT COVER
2	157141	LAWN DECK HEIGHT ADJUSTMENT PLATE	39	160911	PIN, COTTER, 1/4" x 1 1/2"
3	151551	LAWN DECK SHAFT HANGER	40	123371	BOLT, HCS, 3/8"-16 x 2 3/4"
4	151491	HANGER ROD BUSHING	41	151881	DEFLECTOR
5	151541	FRONT LAWN DECK HANGER ROD	42	151901	PIN, HINGE
6	151531	REAR LAWN DECK HANGER ROD	43	150051	SPRING, TORSION
7	157191	REAR LAWN DECK LINK PLATE	44	150631	BRACKET DEFLECTOR
8	151631	FRONT LAWN DECK LINK PLATE	45	Deleted	
9	151561	LAWN DECK HEIGHT ADJUSTER LEVER	46	151281	BAFFLE VORTEX
10	151591	LINKAGE CONNECTOR	47	157111	BRACKET, RH ANTI-SCALPING WHEEL
11	123761	BUSHING, NYLON, 3/4" BORE	48	157101	BRACKET, LH ANTI-SCALPING WHEEL
12	151701	SPINDLE ASSEMBLY	49	157211	BUSHING, 3/8" ID x 5/8" OD x 1.03 L
13	150721	BUSHING, 1.38" ID x 1.63" OD	50	157231	SPRING, E, 5"
14	151481	LAWN DECK WITH PLATE	51	157131	SCREW, SHOULDER, 3/8" -16
15	151471	IDLER ARM, BELT RELEASE LEVER	52	157321	NUT, 5/16" PUSH
16	151271	PULLEY, FLAT, IDLER 4"	53	157081	WHEEL, ANTI-SCALPING
17	151641	LAWN DECK ANTI-TORSION PLATE	54	157311	SCREW, 5/16" -18 x 1-1/4" TRI LOBE THREAD FORMING
18	179311	WHEEL, CASTER	55	150941	SPRING, E., .750" OD x .112" WIRE
19	157221	BUSHING, .265" ID x .370" OD	56	165131	BOLT, HCS, 3/8" -24 x 1-1/4", GR 8
20	143661	KNOB, HANDLEBAR 5/16" -18	57	114681	BOLT, HCS, 1/4" -20 x 1-1/4", GR 2
21	151611	GUARD, LEFT BELT COVER	58	157301	BOLT, HCS, 1/4" -20 x 3/4", Gr 5
22	151621	GUARD, RIGHT BELT COVER	59	145291	BOLT, 5/16" -18 x 3/4", CARRIAGE
23	110971	PIN, ROLL, 3/16" x 1-3/4"	60	164131	NUT, NY LOCK, 3/8"-16 LOW PROFILE
24	151601	SCREW, SHOULDER, 5/16" -18	61	110731	NUT, NYLON LOCK, 1/4" - 20
25	150691	BOLT, HCS 3/8" -16 x 2-1/2"	62	110761	NUT, NYLON LOCK, 5/16" - 18
26	151711	PULLEY, V BELT	63	121701	WASHER, FLAT, 3/8" SAE ANSI NARROW
27	165121	SPINDLE NUT, 9/16-18, Hex Lock	64	112381	WASHER, FLAT, 1/4" USS, ANSI WIDE
28	165161	SPACER, .675 ID x 1.125 OD, PULLEY	65	112391	WASHER, FLAT, 3/8" USS, ANSI WIDE
29	101891	GREASE FITTING, 1/4" -28, STRAIGHT	67	165151	WASHER, LOCK, .385 ID x .691 OD
30	151681	STRIPPER	68	151731	BELT, A100, 1/2" x 102"
31	151691	BLADE, 21" MULCHING	69	157121	BOLT, HCS 3/8" -16 x 2-1/4"
32	165141	WASHER, .385 ID x 1.390 OD, BLADE	70	120301	SCREW, 3/8" - 16 x 1-1/2"
33	151921	PIN HITCH (CLIP)	71	110751	NUT, NYLON LOCK, 3/8" - 16
34	160281	SPACER, .39 ID x 1 OD x .785 T	72	Deleted	
35	110961	PIN, ROLL, 3/16" x 1"	73	112371	WASHER, FLAT, 10-24
36	126851	PIN, COTTER, 3/16" x 1-1/2"			
37	151511	CASTER AXLE YOKE			

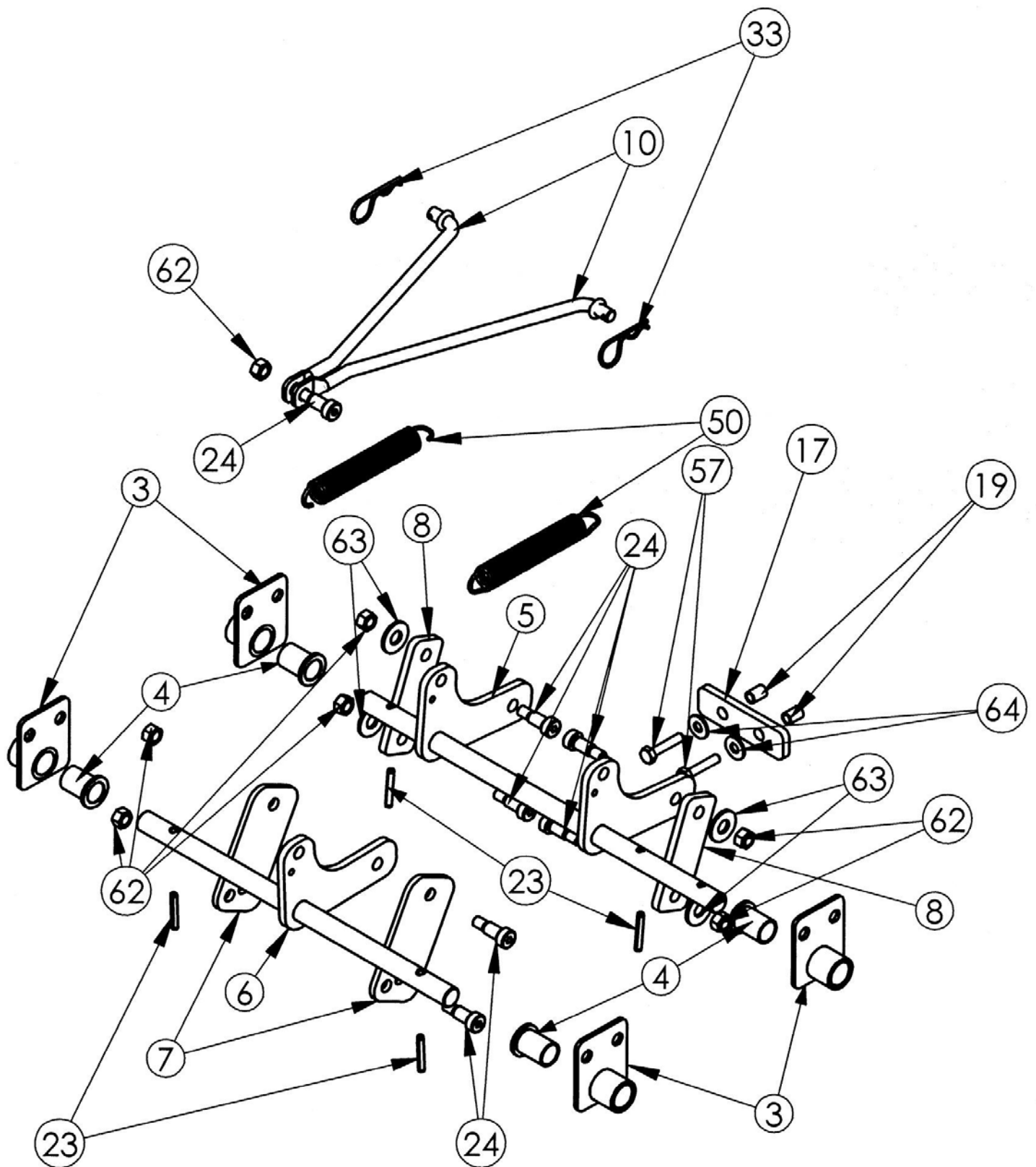
Frame Assembly



Deck Assembly



Height Adjuster Assembly





COUNTRY HOME PRODUCTS®

Meigs Road, P.O. Box 25, Vergennes, VT 05491

1-800-DR-OWNER (376-9637) • www.dr-owner.com

©2004 CHP, Inc. 157661