

Acer Projector Gateway

Introduction

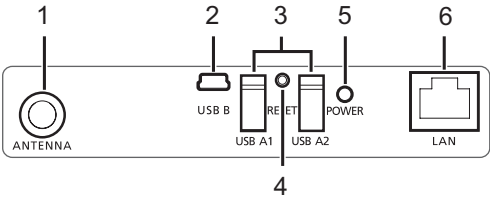
The Acer Projector Gateway (APG) is a smart, integrated system that enhances presentations via your Acer projector. The APG provides versatile source connectivity, the latest eProjection Management tools, support for video playback via the built-in decoder and more.

APG features:

- With high-performance wireless projection via a built-in access point featuring a lossless CODEC or an RJ-45 port for wired connections.
- Plays any audio content through the projector's built-in speakers for added effect.
- Visitors can easily launch Acer eProjection Management automatically by inserting the Acer Plug-and-Show token (featuring the windows autorun function) into the source's USB port, or by installing the software via your Internet browser. A driver disk is not required.
- Presents a user-friendly graphic interface for simple setup and operation.
- Allows presenters to connect to the Internet or corporate Intranet to retrieve interactive content during presentations.
- Supports up to four presentations at the same time under split-screen projection mode.
- Supports remote control functions for projector operation.
- Makes wireless or wired connections via 802.11b/g, 11b/g/n or an Ethernet 10/100-based network.
- Acer Projector Gateway Web Management enables a web-based control of Acer projector for both MS Windows and Mac OS.
- Wireless network security (WEP, WPA-PSK, WPA2-PSK).
- MobiShow technology allows a wireless projection from a WiFi smart phone.
- Acer Multiple Projectors Control Center is a PC utility which allows one PC to control all projectors that are connected to LAN.
- Crestron compliant.
- Enjoy media playback via USB type A slot.

Guide to components

This table discusses the hardware features of the APG:



#	Component	Description
1	WLAN antenna connector	Connects to a wireless LAN antenna.
2	Mini USB	Project PC screen via mini USB (USB B).
3	USB Type A	Connects to USB disk/stick for multimedia playback.
4	RESET button	Restart the APG.
5	POWER indicator	Indicates the APG's power status.
6	LAN port	Connects to an Ethernet 10/100-based network.



.....

Note: The APG provides advanced projector functions when you enter supervisor mode. Set a supervisor password and enable full control of system settings with the convenience of remote control.

Note: Antenna is only required for wireless model.



.....

Important: Acer recommends setting up the projector name (SSID) and supervisor password when using the projector for the first time.



.....

Note: Projector name (SSID) is only required for wireless model.

System Requirements

- Acer eProjection Management software installed or Acer PnS token ready.



.....
Note: Acer PnS token is the optional accessory.

- Computer CPU - Intel Pentium III-800 MHz (or greater).
- Computer memory - 256 MB of RAM required, 512 MB or more recommended.
- Hard disk - 10 MB of available hard disk space.
- Display: Super VGA supporting 800 x 600, 16-bit high color or higher-resolution display recommended (PC and display).
- Ethernet adapter (10/100 Mb/s) for an Ethernet connection.
- Video application - Upgrading to Windows Media Player (WMP) v.10 or above is recommended.

OS support

- Windows Microsoft Windows 2000 with service pack 4 or later.
- Windows XP Home or Professional Service pack 2 32-bit (recommended).
- Windows Vista 32-bit.
- Windows Vista SP1.
- Macintosh OS V10.5 and above.
- Windows 7

Browser support

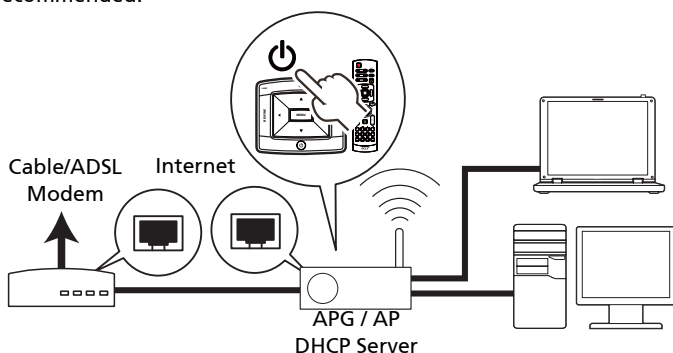
- Windows: Microsoft Internet Explorer 6.0 or 7.0 (recommended), Firefox 1.5 or 2.0.

Connect to the projector

Before you begin projecting, you will need to do the following things:

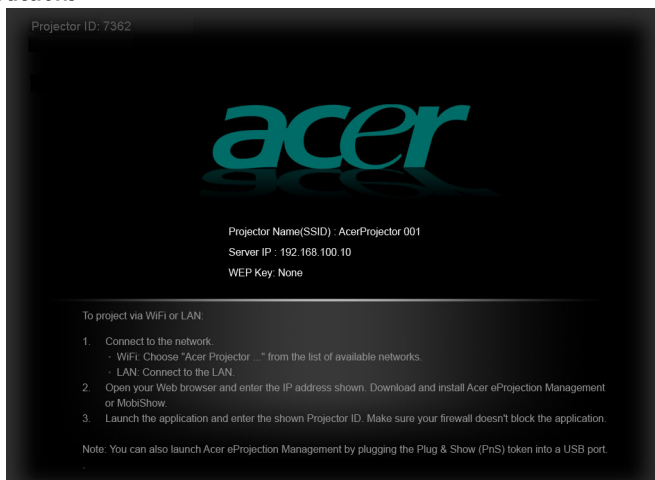
Turn on and connect to the network

Press the **Power button** on the bundled remote control or the device to turn on your Acer projector and enable the WLAN (only for wireless model). Connecting the projector to the LAN for a wired connection is also recommended.



Check the information on the splash screen

Take note of the important information on the splash screen. The splash screen consists of the following items: **Projector ID**, **Acer logo**, **network information** and **instructions**.



Projector ID (displayed only when available)

The 4-digit number will not be displayed on the top left of the splash screen until this option is enabled by the supervisor in the **Configure** tab under Acer eProjection Management. The four digits are given randomly for projector identification. For more information, please see Projector ID on page 25.

Projector Name (SSID)

The Projector Name and initial Service Set ID (SSID) can be added by the supervisor on the Configure tab of Acer eProjection Management. For more information, please see Network settings on page 26.

Server IP

The Server IP indicates the IP address your projector uses to connect to a wired or wireless network. It will be 192.168.100.10 for general wireless and wired connections. The Server IP will be assigned by the wired network with DHCP enabled. For more information, please see Network settings on page 26.

Security : (None, WEP, WPA-PSK, WPA2-PSK)

Wired Equivalent Privacy or Wireless Encryption Protocol (WEP) is a scheme to secure wireless networks. It is part of the IEEE 802.11 wireless networking

standard. WPA-PSK (Wi-Fi Protected Access - pre-shared key) and WPA2-PSK are other individual encryption methods with higher level security. The option is enabled by the supervisor in the **Configure** tab under Acer eProjection Management. For more information, please see Security settings on page 27.



Note: Projector name (SSID) and security are only required for wireless model.

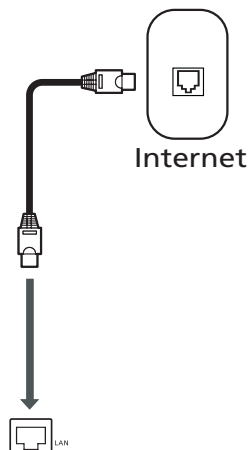
Note: When change LAN/WiFi from off to on one projector OSD, please change projector source to "LAN/WiFi". You can use keypad or remote controller to adjust projector source upto "LAN/WiFi".

Follow the instructions on the splash screen to connect and project

- 1 Check **Projector ID**, **Projector Name (SSID)**, **Server IP** and **Security option** on the splash screen. Ask your supervisor to set safer key when Security is enabled.

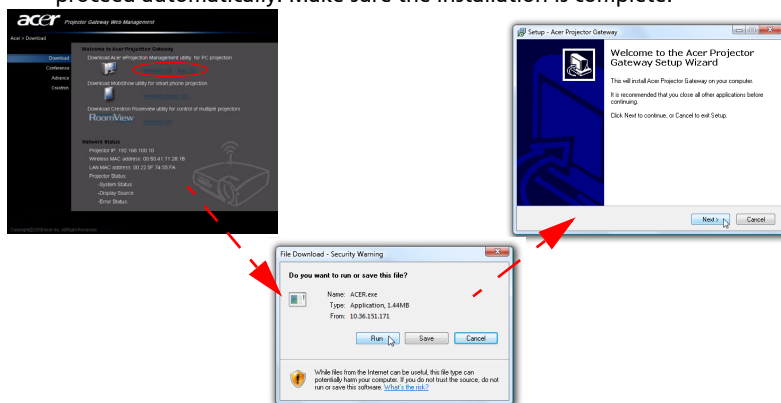


- 2 Enable your WLAN and select the access point labeled **AcerProjector** or **AcerProjectorXXXX** to connect wirelessly. Connect the projector to your LAN for a wired connection.



Note: Step 2 is only required for wireless model.

- 3 Open the Internet browser (see note). Click on **Download Acer eProjection Management** on the welcome page, and then click **Run** to launch the **Welcome to the Acer Projector Gateway Setup Wizard**. The installation will proceed automatically. Make sure the installation is complete.





Note: If you do not see the welcome page or cannot connect to the wired network, please enter the **Server IP** address (the second item listed under the Acer logo on the splash screen) into your browser's address bar.

Note: Ensure that you have administrator-level permission on your computer so that you can install the software.

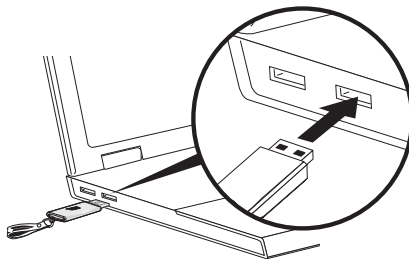
Note: If you receive any security warnings, click **OK** to proceed with the installation procedure.

Note: The Acer eProjection Management shortcut will be created in desktop when the installation is complete.



Note: You can also insert the optional Acer PnS token featuring the windows autorun function into the USB port of your system. It is useful for visitors.

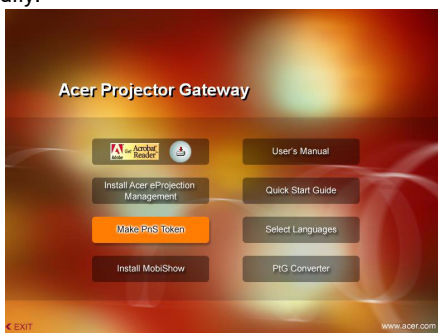
Note: If your PC cannot execute auto-run function of PnS token, please execute AcerProjectorGatewayW5.exe in PnS token manually.



Note: You can make PnS token by yourself via "Make PnS Token" button from CD.
Acer PnS Token is default accessory for P7200i/P5271i.



Note: If your PC cannot allow auto-run function of PnS token, please execute AcerProjectorGatewayW5.exe in PnS token manually.

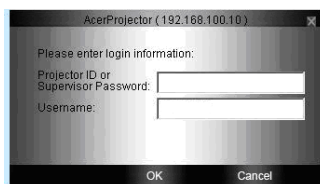


- 4 Acer eProjection Management will execute automatically and the window shown below will pop up to search for your Acer projector.

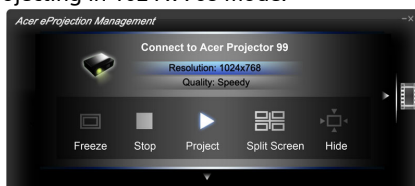


Note: Make sure your personal firewall does not block the Acer eProjection Management application.

- 5 When the search is complete, a login dialog box will pop up to ask you to enter the User name and Projector ID (if needed) to log in to your acer Projector.



- 6 The UI will look as it does below when your source successfully connects and begins projecting in 1024 x 768 mode.



Note: For the best projection performance, Acer recommends adjusting your resolution to 1024 x 768.

Acer eProjection Management

Acer eProjection Management helps users connect to, and control Acer projectors with the integrated APG. By allowing the transmission of high-quality audio and video signals, the APG gives users flexibility and convenience, allowing them to use an Acer projector in almost any room or setting.

Acer eProjection Management includes the following features:

For first time installation

The utility can be downloaded directly from the projector using a wireless or wired network connection.

The software will be set up on any PC in just a few minutes, without disks.

Security

Acer eProjection Management supports PIN code security, protecting the Acer projector from unauthorized access and use.

Wireless communications between the Acer projector and PC are protected using unique, image-based encryption to prevent eavesdropping or modification of the video signal.

Simple GUI for one-click projection

The easy-to-use GUI enables one-click usability in finding and connecting to the wireless projector, changing display settings, and controlling the projector.

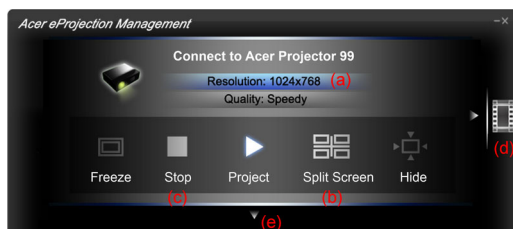
It also supports up to four simultaneous presentations.

Onscreen remote

An onscreen remote utility gives any user the ability to control functions of the projector without the owner worrying about the loss of or damage to the projector's remote handset or worn-out batteries.

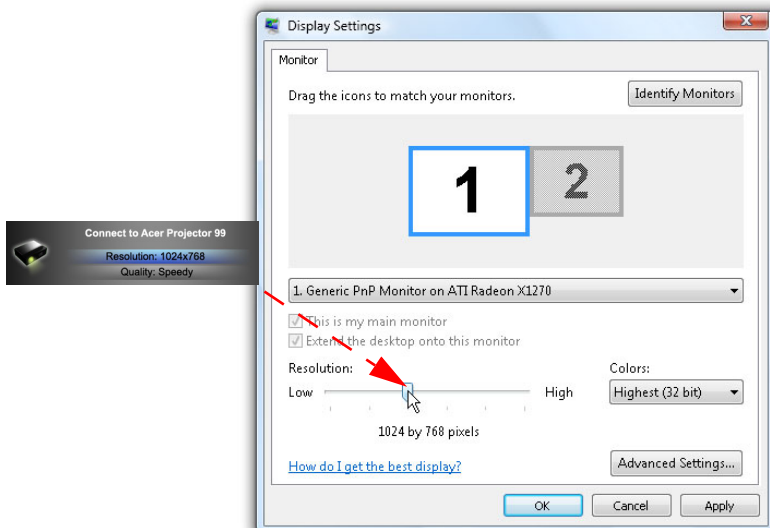
Compact user interface

The compact user interface (UI) provides a solid look and feel.



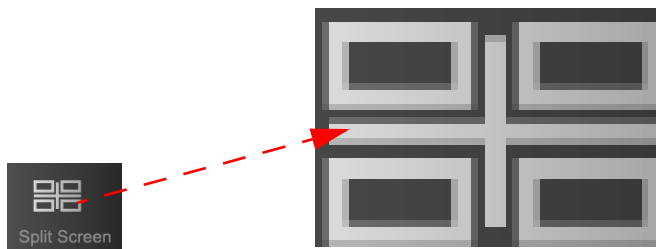
- Allows you to change the projection resolution (a).

To change the projection resolution, click on the resolution below the projector icon to reveal a list of choices.



- Project to split-screen or full-screen (b).

To project from multiple sources, click a number to display by split screen in corresponding location.



- Projecting or stop projecting (c)
- Change to video playing (d).

You can also select video clips to display from the compact window by clicking the arrow on the left of the screen.



Select a video clip, and click the Play icon ▶ to load and Stop icon ◻ to stop the playback.



Note: The video formats supported MPEG2/MPEG4/H.264 (option). Connect via the LAN for better performance if playing video. The full rate will be 30 fps depending on the video format.

Note: Please install audio driver "VAC_Setup.exe" from CD, and you can project video clip with audio together.

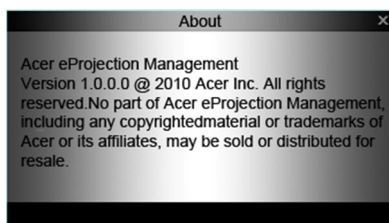
- Change to full user interface (e).

Full user interface

You can click the down arrow to reveal the full UI from the compact UI.



The Main tab of the full UI displays Projector ID, Projector IP and User name information (a), and gives you the option to select a different wireless projector (b). Change other PCs who connected this projector by Switch presenter (c). You may also do real installation in hard disk via PnS token by clicking Install (d) or make another token via Save P&P(Plug & Play) Program to (e). About (f) displays version information of Acer eProjection Management.




MobiShow Projection

MobiShow allows content projection from a WiFi-enabled smart phone or PDA running Windows Mobile 5 and higher. Any type of screen content or a PowerPoint slideshow (requires conversion with the included utility) can be projected.

MobiShow Installation

Obtain the Mobishow installation (CAB) file from the installation CD.

- Click **Install MobiShow** to download the software installer (in CAB format) to your mobile device. 
- Open your device's Explorer and locate the CAB file.
- Double-click the CAB file to start installation.
- Follow the onscreen instructions to finish installation.



Note: Please make sure mobile with free 10MB flash space at least.

Connect to a wireless projector

Enable WiFi on your mobile device and connect to the wireless projector in the same way as you would from a PC (see page 5). Refer to the IP address shown on the projected screen and the SSID displayed onscreen (default SSID is AcerProjectorGateway).



Note: MobiShow is only supported for wireless projector and enduser also can use USB WiFi dongle by USB type A host of the projector.

iPhone Supported

Mobishow also support iPhone, please follow same flow to download MobiShow installer from Apple Store.

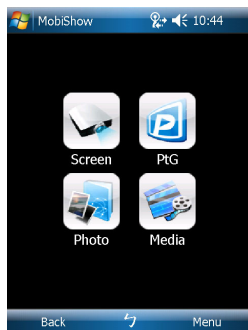
Using MobiShow

- Open **Programs** on your device and find the **MobiShow** application.
- Tap the **MobiShow** icon to launch the client software.

- MobiShow will turn on Wi-Fi on your phone and list available access points for you to choose.
- The MobiShow client will automatically search for wireless projectors (SSID with prefix AcerProjectorGateway) and connect.
- If more than one projector is found, the following list is displayed for you to select the one to use.



- When a wireless projector is found, it will automatically login and the following main menu is shown.









Note: Media function of Mobishow is optional.

Select which feature to use. To project the screen of your phone, tap the **Screen** icon. To do a PC-less presentation using Presentation-to-Go (PtG), tap **PtG**. To play a video or MP3 from your device, tap **Media**.

Project the device's screen



MobiShow will project anything displayed on your screen. You may launch another application (such as PowerPoint Viewer) or open any file (such as a Word document or JPG image) and it will be projected to the projector. Control the projection using the following commands:

Icon	Item	Description
	Stop	Tap to stop projection.
	Pause	Tap to pause the projection; tap again to resume projection.
	Zoom	Tap to zoom the projected screen to extend the longest side of your image to fill the screen.
	Play	Tap to restart projection if it is stopped.
	OK/Back	Tap to return to main menu.
	Photo	To play a photo (*JPEG format) from your device, tap Photo .









Note: Screen projection is not supported by iPhone.

Wireless PtG

Obtain the PtG converter from the installation CD and install it on your PC; this will enable you to convert PowerPoint files to PtG format.

When you select **PtG**, the MobiShow client will automatically open Explorer for you to select a PtG file. Select the file to open for your presentation. When the file is open, the PtG slides will be projected while you will be shown controls on your device screen. The slides are projected fullscreen with all the effects of the original PowerPoint slides preserved.



Icon	Item	Description
	Prev/ Next	Tap to go to the previous or next item on the slide.
	PgUp/ PgDn	Tap to go to previous or next slide.
	Stop	Tap to stop projecting the file. The icon will become Play if the file is not being played. Tap Play again to play the file if it is stopped.
	Home	Tap to go to the first slide.
	Jump	Tap and MobiShow client will show thumbnails of every slide in the PtG file. You can select any page to go to.
	Open	Tap to select another PtG file.






Note : The PtG output resolution support 800X600 and 1024X768.

Photo reviewer

When you select the Photo function, MobiShow will automatically open Explorer for you to select a photo folder. Open a file (*.JPEG format) and controls show on your device's screen.



Icon	Item	Description
	Prev/ Next	Tap to go to the previous or next photo file.
	Play	Tap to restart projection if it is stopped.
	Open	Tap to select another Media file.

Media

When you select the Media function, MobiShow will automatically open Explorer for you to select a media file. Select a file (videos in mpeg2, mpeg4 or H.264 format, or MP3 music files) to play. When the file is open, the media will be projected and controls shown on your device's screen.



Icon	Item	Description
	FR/FF	Tap to seek backward or forward.
	Vol-/ Vol+	Tap to adjust playback volume.
	Stop	Tap to stop playing the file. The icon will become Play if the file is not playing. Tap Play again to play the file if it is stopped.
	Mute	Tap to mute the audio. Tap Mute again to restore the volume.
	Open	Tap to select another media file.

When you are in the main menu, tap **OK** or **Back** to close the application.

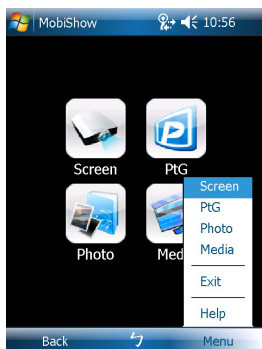


Note: Media function of Mobishow is optional.

Note: Media projection is not supported by iPhone.

Help

Tap Menu to select Help to find MobiShow information.



Using the PtG converter

To use the Presentation-to-Go feature, you need to install the PtG Converter to your PC from the CD. Put the CD into your CD-ROM and follow the onscreen instructions to install the PtG Converter.

Open **Programs > PtG Utility > PtG Converter** from the Start menu. The following control panel is displayed on your desktop.



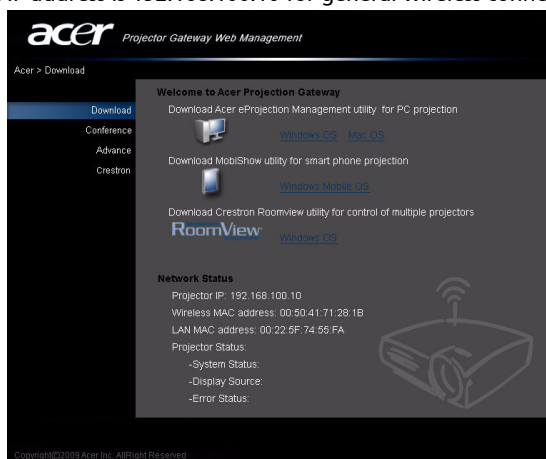
Click **Convert** to select a PowerPoint file and start conversion. PtG Converter will open the PowerPoint file and convert it to PtG format. You can see the conversion process on your desktop.

Click **Preview** to expand or collapse the preview pane. Click **Play** to play back the selected PtG file or click **Open** to select a different PtG file.

Acer Projector Gateway Web Management

Open the Internet browser, it will redirect to "Acer Projector Gateway Web Management" main page automatically, or you can enter the Server IP address (Page 5) to access that.

The default IP address is 192.168.100.10 for general wireless connections.



Download

Download the client software.

You can download installation program for different platform to execute -

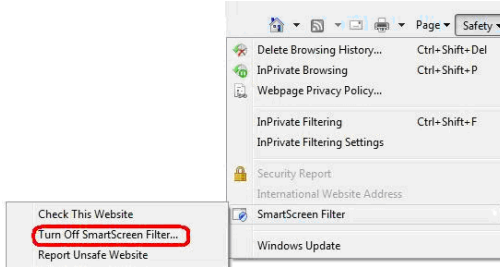
- Acer eProjection Management application for Windows NB or PC
- MobiShow Utility for mobile phone (Window Mobile V5.0 supported)
- Mac Utility Client for Mac OS
- Crestron RoomView

After install the program, the shortcut will come out on the screen.



Note: You also can download from installation CD.

Note: If using IE V 8.0, please adjust to disable SmartScreen Filter before executing download.

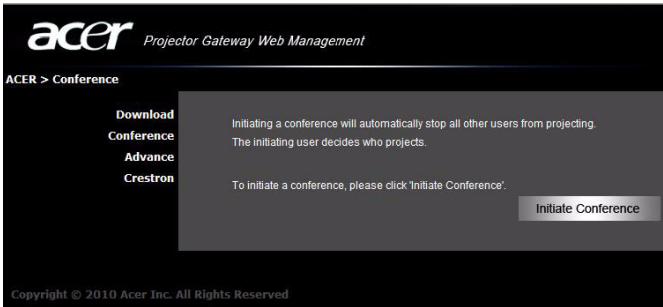


Network Status

Show IP address of this connection and projector status.



Conference

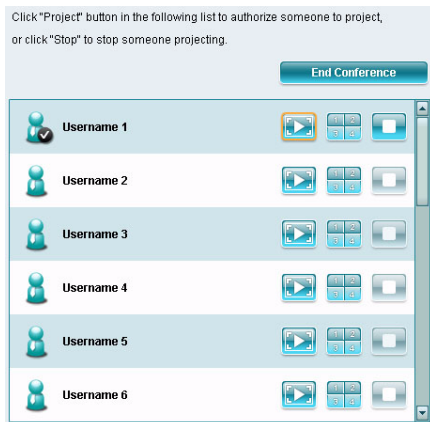
You can initiate conference by webpage.



Clicking on **Initiate Conference** **Initiate Conference** gives you control over who is projecting at any time, and prevents the current presenter from being disconnected inadvertently.

Once a conference has been initiated, all the persons connected to the projector are displayed in a list. The active user is indicated by a check mark next to the

user icon  and a triangular icon . Inactive users are indicated by a square icon. To activate a user, click on the **play this user** icon next to the user's name.



Click **End Conference**  to end the conference.

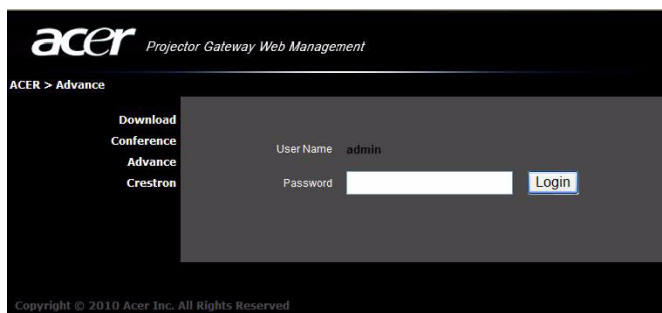


.....

Note: Please remember to log out if you want to end conference.
Note: support most of 32 users in same conference room.

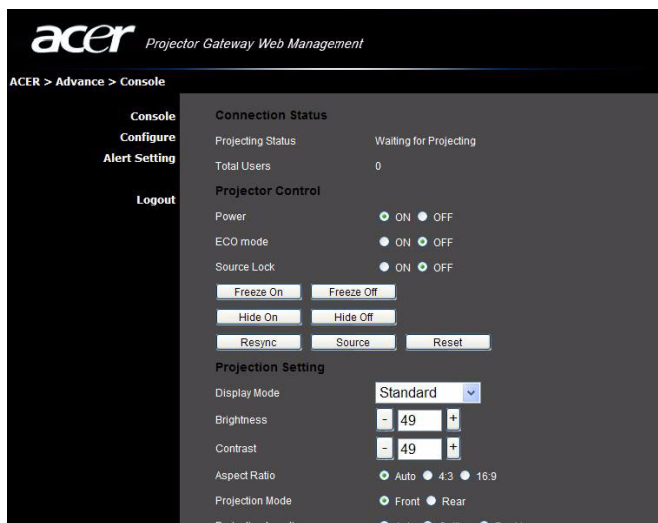
Advance

Login Admin password is default by 123456 to access advanced setting page.



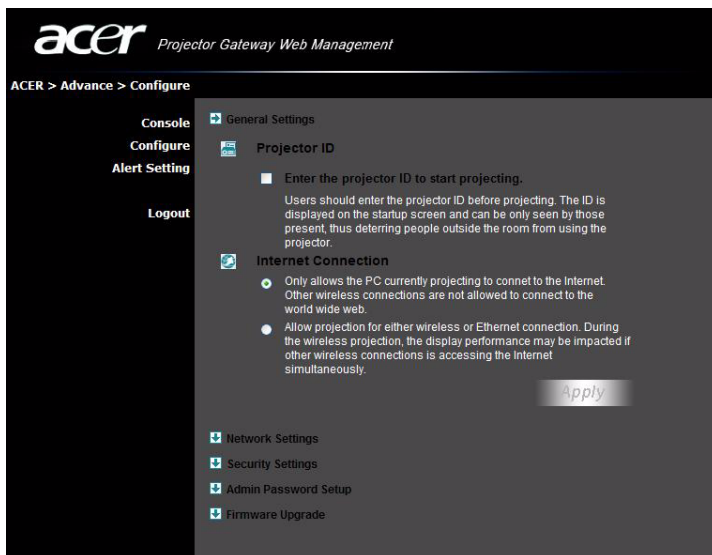
Console

The Console page gives you access to a variety of status and control features to adjust best projection setting. From this page, you can get projection status, adjust brightness, contrast and aspect ratio, as well as change source and several advanced setting. You can also turn off the projector directly from this page.



Configure

The **Configure** tab allows you to change a variety of settings.



Projector ID

You can check **Enter the projector ID to start projecting** to ensure that only people in the room are able to access the projector. You can also select who can connect to the Internet via the projector's WLAN router - either all the meeting attendees, or only the person currently projecting.



Note: The APG needs to reboot to apply changes made in **Configure** mode. Please connect to the projector again if you want to continue to use it.

Network settings

Click **Network settings** to adjust other network settings.

The screenshot shows the Acer Projector Gateway Web Management interface. The breadcrumb trail is "ACER > Advance > Configure". The left sidebar has four options: "Console", "Configure", "Alert Setting", and "Logout". The "Configure" option is selected, and the "Network Settings" sub-option is active. The main content area is titled "These are the settings for the access point:". It includes a "Projector name (SSID):" field with the value "AcerProjector". Below this is a "Wireless Channel:" dropdown menu set to "Auto". There are two radio buttons: "Obtain an IP address automatically" (selected) and "Use the following IP address:". Under the second option, there are fields for "Device IP", "IP Address", "Netmask", "Gateway", and "DNS", all set to "192.168.100.10". To the right of these fields is a "DHCP Server" section with "Auto" selected and "OFF" as an alternative. Below the DHCP section are "Start IP" (192.168.100.11) and "End IP" (192.168.100.254) fields. An "Apply" button is at the bottom right. At the bottom of the main area, there are three links: "Security Settings", "Admin Password Setup", and "Firmware Upgrade".

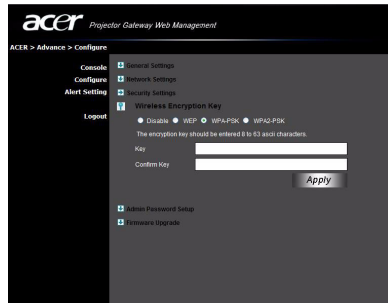
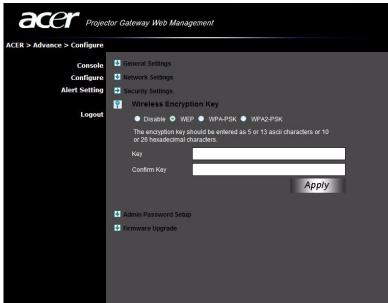


Note: Default Projector Name (SSID) is AcerProjector and leave 11 digits for customer setting.

Note: Projector name (SSID) is only required for wireless model.

Security settings

If you're projecting sensitive information, you may want to set up a WEP or WPA-PSK key by clicking **Security settings**.



The WEP key can support from 64- up to 128-bit encryption for wireless connections. This feature can be set and enabled by the supervisor. You must key in 5 or 13 ASCII characters, or 10 or 26 hexadecimal characters. The WPA-PSK/WPA2-PSK encryption key should be entered as 8 to 63 ASCII characters. This feature can be set and enabled by the supervisor.



Note: ASCII (American Standard Code for Information Interchange) is a code for representing characters as "0-9, a-z, A-Z, !, @, #, \$, %, &, *, -, _ , +, =, /, ?" are allowed. Hexadecimal digits consist of the numbers 0-9 and the letters A-F/a-f.

Note: Update additional hotfix from Microsoft for WPA2-PSK if Windows XP OS.


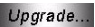
Note: Increase computing loading if enable WPA-PSK/WPA2-PSK function, please consider this and get acceptable projection performance.

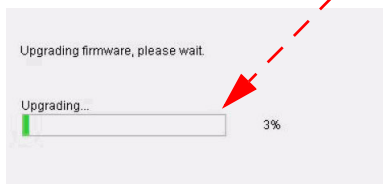
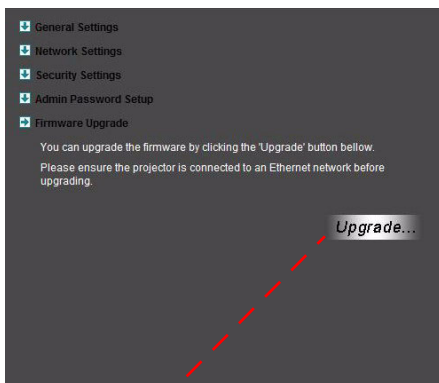
Note: Security is only required for wireless model.

Admin password setup

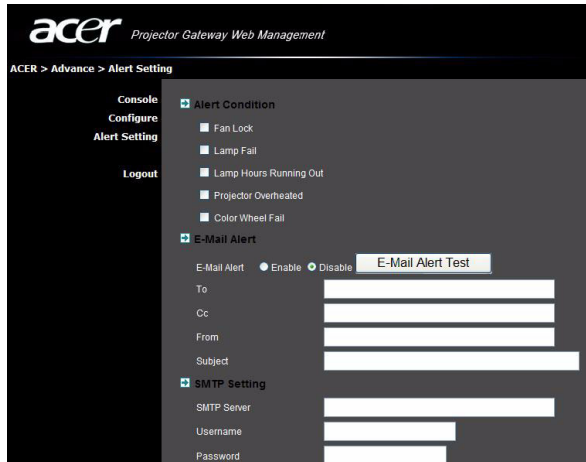
Change the password to login **Advance** webpage by clicking **Admin password setup**. The default supervisor password is 123456.

Firmware upgrade

Ensure the projector is connected to the LAN and the Internet, and click on **Firmware upgrade**  **Firmware Upgrade** and then click the **Upgrade...** button . The projector will access the Internet to automatically download and install any available upgrades.



Alert Setting

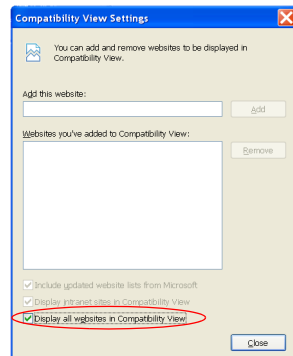
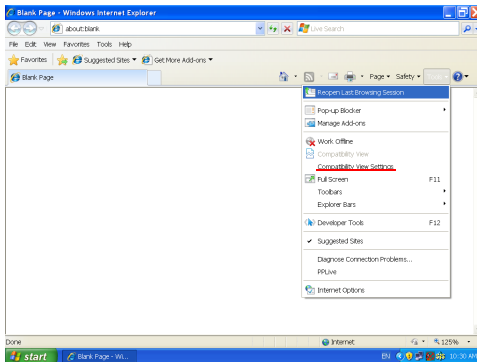


Logout

After tap "logout", you will return to download page.

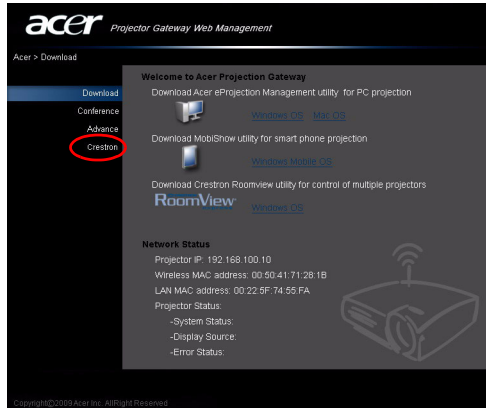


Note: If using IE V8.0, please adjust setting in **Compatibility view settings** to make sure display normally.

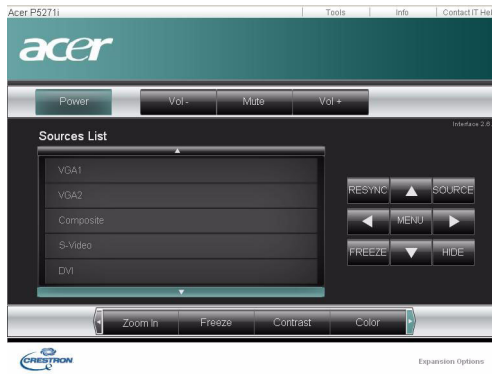


Crestron Control Tool

Open the Internet browser, You can find Crestron link in the mainpage of "Acer Projector Gateway Web Management". Tape Crestron to popup extra interactive FLASH webpage and start to use.



Mainpage



You can control projector by easy-to-use interface as Crestron tool, like volume control, source change and projector setting. For more information, please visit <http://www.crestron.com> & www.crestron.com/getroomview.

Tools

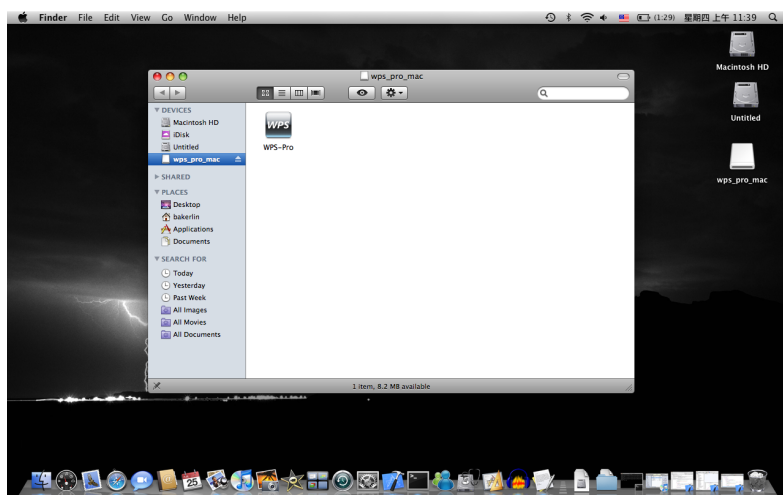
You can get projector IP information here, also can modify networking setting manually and set up password as wish.

Info

You can find projector information easily by this page and also can add additional information to help you manage each projector.

Mac Utility for Mac OS

1 You can project Mac screen via WPS-Pro.



- 2 You can get installation program from CD or download from webpages (page 7 & page 9)
- 3 Make sure your personal firewall allows WPS-Pro software to pass through. There will be shortcut WPS-Pro on desktop.



- 4 Enter Login code (on the projected screen) if have and press OK to start rejection.

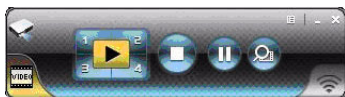





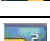

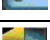


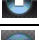


- 5 The UI will look as it does below when your source successfully connects and begins projecting in 1024 x 768 mode.



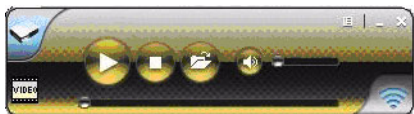
Compact and full user interface



Presentation Mode








	Project desktop screen to Full screen or split screen
	Full Screen projection
	Project to Split #1
	Project to Split #2
	Project to Split #3
	Project to Split #4
	Pause projecting
	Stop projecting
	Magnifier
	Server Login Code
	While projecting in progress, this icon is blinking

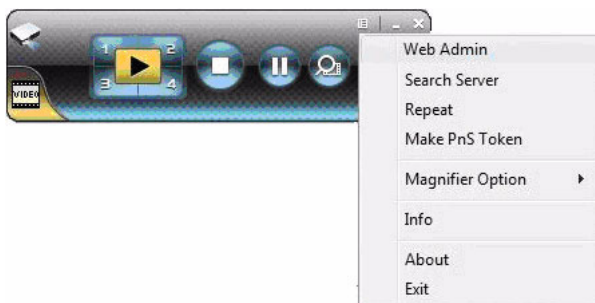
Video Mode


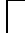




	Start Playing Video
	Stop Playing Video

	Open Video File
	Audio volume
	Audio volume strength bar
	Video time bar
	While playing video, it will be blinking

About



	Click  to open function menu and select "Web Admin" management web page. Please refer to Acer Projector Gateway Web Management (checking page 21).
	Minimize the program
	Exit the program

Contact IT Help

If you encounter any problem about projector, you can use this message window in upper-right of page to do real-time communication with IT people.

Acer P5271i
Tools
Info
Contact IT Help

HELP DESK
Send

Projector Information		Projector Status	
Projector Name		Power Status	
Location		Source	Network
Firmware Version	W19	Display Mode	Front Desk
Mac address	00:12:50:00:1e:34	Projection	Projector Position
Resolution	1920 x 1200	ECO Mode	Economic
Lamp Hours	Lamp Hours	Error Status	1/Good
Assigned To			

Exit

Expansion Options

Multi-media

Introduction

The Acer multimedia support offers easier projection without PC and player connected. Through USB type A slot, you can easily access PtG (refer to Page19) and JPEG photo files. The stylish user interface gives you best experience while playing these media files.

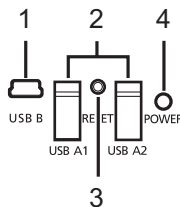
This function is under projector source "USB A". You can use keypad and remote controller to adjust projector source upto "USB A".

Multimedia Features

- Fancy and stylish user interface for better experience.
- Supports USB memory stick via USB type A slot.
- Supports PowerPoint slideshow by PtG files and high resolution JPEG photos playback.

Getting Started

Connecting multi-media device to the projector

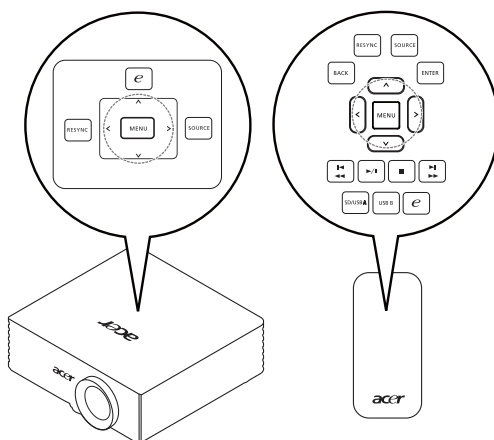


#	Component	Description
1	Mini USB	Project PC screen via mini USB (USB B).
2	USB Type A	Connects to USB disk/stick for multimedia playback.
3	RESET button	Restart the APG.
4	POWER indicator	Indicates the APG's power status.



-
- Note:
- a. Support USB flash drive by FAT 32 format.
 - b. Support USB flash drive with only one logical partition.

Control Panel and Remote Control



Icon	Component	Description
	RESYNC	Back or stop function in multimedia controls.
	SOURCE	Enter or play under certain control conditions.
	Back	Back to upper data folder.
	Enter	Press to confirm your selection of items.
	MENU	Press to be back or stop function in multimedia controls.
⬆ ⬇ ⬆	Direction Keys	Press "⬆ ⬇" to select items or volume control while media playing. Press "⬆" to enter or play function in most multimedia controls. Press "⬇" to be back function in most multimedia controls.
⏮	Pre./Rewind	Go to previous index or page in file list view.
⏭	Next/Fast forward	Go to next index or page in file list view.
⏮/⏭	Play/Pause	Press "⏮/⏭" to play/pause media file.
■	Stop	Stop playing media file.
	SD/USB A	Press to change source to USB A. (no SD function)
	USB B	Press to change source to USB B. (please refer to page 42)
e	e key	Enter or play function under certain control conditions.

Presentation to Go

Adjust projector source to USB A (USB Type A), you will find below projecting screen.



PtG

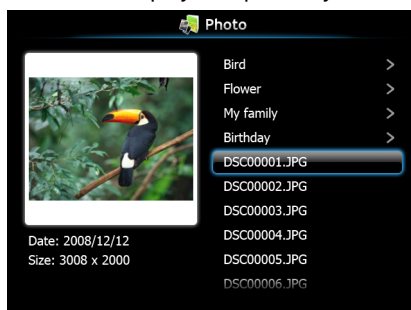
For access of PtG files.

You can use PtG converter (refer to P19) to transfer from ppt file to be ptg file, then project to keep all effect included in ppt file.

Photo

For access of JPEG photo files.

You can use navigation key to choose in thumbnail or listing mode, or press Enter/eKey to do slideshow when playback photo by full screen.



Note: The photo file size is smaller than 10MB, the photo resolution is under 8192 x 6144 pixels. Support JPG photo viewer with EXIF information only.

Setup

Adjust display setting.

Appendices

Troubleshooting

If you experience a problem with your Acer projector, refer to the following troubleshooting guide. If the problem persists, please contact your local reseller or service center.

Problems and Solution

#	Problem	Solution
1	The projector stops responding to all controls	If possible, turn off the projector, then unplug the power cord and wait at least 30 seconds before reconnecting power.
2	Lamp burns out or makes a popping sound	When the lamp reaches the end of its useful life, it will burn out and may make a loud popping sound. If this happens, the projector will not turn on until the lamp module has been replaced. To replace the lamp, follow the procedures in the projector CD manual's "Replacing the Lamp" section.
3	Image or projector problems	Please refer to projector CD manual's troubleshooting.
4	USB read fail	Please make sure the USB device is good and well inserted. Remove to try for several times if necessary. Be reminded that USB does not support other file format than FAT16/32. (Ex: NTFS).
5	USB drive fail	USB does not support USB hub function and which power consumption is over 500mA.
6	Media file not found or can't be opened in file list	The files by un-supported codec won't be shown on file list. Please check the media support table again in this manual.

Remote Desktop

Introduction

Remote Desktop is amazing feature which seamlessly bring your NB/PC to Acer Projector in your Meeting room. You can operate your NB/PC on Projector with remote control via standard USB keyboard and mouse.

Plug and Play, support all standard USB keyboard/mouse

It's easy to use wireless/wired standard USB keyboard/mouse to fully control your NB/PC in front of your Projector.

Step 1: Turn on Acer Projector.

Step 2: Plug the USB keyboard/mouse receiver or wired USB keyboard/mouse into a free USB port (Type A) on Acer Projector.

Step 3: Connect NB/PC with projector by Wireless or LAN, then execute Acer eProjection Management software to project NB/PC screen.

Step 4: The USB devices will be automatically detected, and you can control NB/PC in front of projector via Remote Desktop.



.....
Note: No support remote desktop under split screen display.

Display over USB

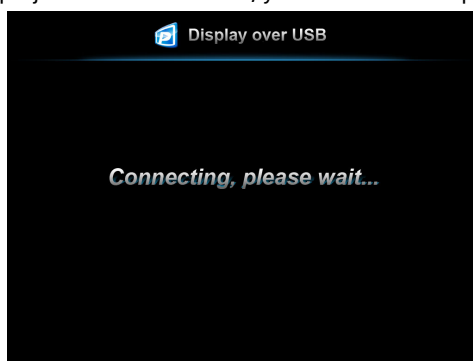
Introduction

Display over USB(DoUSB) projection is one easy function to project NB/PC screen on projector through one USB cable (USB type A to miniUSB) without installing any driver.

If enduser un-plug the USB cable, projector will stop the projection and return to standby status.

How to start DoUSB

Step 1: Adjust projector source to USB B, you will find below projecting screen.



Step 2: Connect the USB cable to both Projector and NB/PC, plug the mini USB to Projector side and type A host to NB/PC side.

Step 3: Start to display NB/PC's screen through USB automatically.

Step 4: Unplug the USB cable to stop displaying over USB.



.....

Note: only support one NB to one projector (1-to-1 screen projection) by DoUSB connection.

Support All PC Screen Resolutions

Through our auto-detecting and auto-adjusting/auto-stretching algorithm inside the proposed platform, all the NB/PC screen resolution can be supported then wirelessly projected by the proposed platform.

- a If current resolution setting at the NB/PC side is smaller than the current projector resolution, our program will adjust current NB/PC resolution as the optimum projection resolution in order to reserve the best image quality in this kind of environment.
- b If current resolution settings at the NB/PC side and projector side are the same, this same optimum projection resolution will be implemented.
- c If current resolution setting at the NB/PC side is larger than the current projector resolution, our program will change PC's resolution to match the projector for better performance.

Compatible with Windows XP/ Vista/ 7 OS

The DoUSB projection function can be performed under Windows XP with Service Pack 2 and above / Windows Vista 32 bits and 64 bits environments, and Windows 7 32bits and 64 bits.

Features Table

	ModelName	P1100C	P1100A/ P1200A	P1200B	P1300WB/ P7203 / P7205 / P7500	P1200i	P7200i/ P5271i
LAN/WiFi I/O	Wifi	NA				802.11b/g/n; 802.11b/g for Russia	802.11b/g/n; 802.11b/g for Russia
	RJ45 Ethernet Jack	--	V	V	V	V	V
	Audio Out (Mini Jack)	--	--	--	--	--	V
	USB Type A	X2	--	X2	X2	X2	X2
	USB Type B	X1	X1	X1	X1	X1	X1
	SD Card Slot	--	--	--	--	--	--
	Reset Button	V	V	V	V	V	V
	Status LED	V	V	V	V	V	V
	Antenna Jack	--	--	--	--	X1	X1
Features	Application (Network, PC & Mac)						
	(1) DoLAN : Ethernet projection	--	V	V	V	V	V
	(2) DoWiFi : WiFi projection	--	--	Yes (By USB WiFi dongle)	Yes (By USB WiFi dongle)	V	V
	(3) Quad-View (4-split screen)	V	V	V	V	V	V
	(4) HD video playback	--	--	--	--	--	--
	(5) SD video playback	--	--	--	--	--	--
	(6) PtG converter & viewer	--	--	--	--	--	V
	(7) Wireless security (WEP/ WPA/WPA2)	V	V	V	V	V	V
	(8) Remote desktop	--	--	V	V	V	V
	(9) CD-less installation	V	V	V	V	V	V
	(10) PnS Token	--	--	--	--	--	V
	(11) Make PnS Token via CD	V	V	V	V	V	V
	(12) Vista OS compliant (Upto Vista SP1)	V	V	V	V	V	V
	(13) MAC OS (10.4/10.5/ 10.51 version only)	V	V	V	V	V	V
	Web-based Management Page (Network)						
	(1) Download page	NA	V	V	V	V	V
	(2) Conference Control	NA	V	V	V	V	V
	(3) Console (projector control & monitor)	NA	V	V	V	V	V
	(4) Network setting	NA	V	V	V	V	V
	(5) Crestron Flash link	--	V	V	V	V	V

	Modelname	P1100C	P1100A/ P1200A	P1200B	P1300WB/ P7203 / P7205 / P7500	P1200i	P7200i/ P5271i
Features	MobiShow (Network)			Yes (By USB WiFi dongle)	Yes (By USB WiFi dongle)		
	(1) Win Mobile V5 & above supported	--	--	V	V	V	V
	(2) iPhone supported	--	--	Only photo & PtG	Only photo & PtG	Only photo & PtG	Only photo & PtG
	(3) Screen projection	--	--	V	V	V	V
	(4) PtG function	--	--	V	V	V	V
	(5) Photo viewer	--	--	V	V	V	V
	(6) Media sender	--	--	--	--	--	V
	(7) Quad-View (4-split screen)	--	--	V	V	V	V
	Crestron (Network)						
	(1) RoomView (App.) Control & Interactive messaging & Text broadcasting	--	V	V	V	V	V
	(2) Flash GUI (Web) Control & Interactive	--	V	V	V	V	V
	USB functionality						
	(1) DoUSB : projecting by USB type B	V	V	V	V	V	V
	(2) Remote Desktop(KB/ Mouse) by USB type A	V	--	V	V	V	V
	(3) HD video playback	--	--	--	--	--	--
	(4) JPEG Viewer	V	--	V	V	V	V
	(5) Presentation -to-go	V	--	V	V	V	V
Accessory	Remote Controller	V	V	V	V	V	V
	Wireless CD	V	V	V	V	V	V
	Wireless QG	V	V	V	V	V	V
	Detachable Antenna	--	--	--	--	x1	x1
	Wireless PnS(Plug and Show) Token	--	--	--	--	--	V

Frequently asked questions

- How do I configure the device network?

Auto-Configuration Network Setup: The default setting of APG is DHCP client. When the APG is connected to a LAN that already has a DHCP server present, the APG takes an IP address assigned to it by the server. When the APG is connected to a LAN that does not have a DHCP server, the APG becomes the DHCP server in the network.

- Why doesn't my device obtain an IP address automatically?

The device will ask for an IP address from your enterprise DHCP server while booting up, however, sometimes it might fail to obtain an IP address in complex network environments. The system will obtain the IP address again once there is another DHCP server detected or you can configure your device IP address via Network Setup at Web Admin.

- How do I reset the APG to the factory setting?

Press the reset button and press the power button for 20 seconds to reset to factory settings.

- What do I do if I'm not redirected to the APG's web page automatically?

1. Make sure you have connected to the APG successfully.
2. Make sure your IP address is configured as **Obtain an IP address automatically** or you have entered the proper IP address.
3. Turn off the proxy settings of your Internet browser.
4. Open your browser again.

- What do I do if I can't enter the APG web page?

1. Make sure you have connected to the APG successfully.
2. Make sure your IP address is configured as to **Obtain an IP address automatically** or you have entered the proper IP address.
3. Turn off the proxy settings of your Internet browser.
4. Open your browser again and you will be redirected to the APG's web page automatically, or you can enter the device IP manually.

- What can I do if I can't download the APG application?

1. Make sure you have connected to the APG successfully.
2. Make sure your IP address is configured as **Obtain an IP address automatically** or you have entered the proper IP address.
3. Turn off the proxy settings of your Internet browser.
4. Open your browser again and you will be redirected to the APG's web automatically, or you can enter the device IP manually.
5. Download.

- Should I install the application again when upgrading firmware?

Yes. Download the application again and install it again.

- What should I check for if I can't find the APG?

Is the PC connected to the APG properly?

Are there any personal firewalls enabled?

Due to your network or firewall settings, the client application may not be able to connect to the projector server. Please check related settings to allow this application to be able to communicate with the server!

To enable wireless projection, your personal firewall needs to allow the APG

application to pass through.

Due to your firewall setting, the client application may not be able to establish a connection for video streaming. Please check firewall settings to allow this application to be able to communicate with the server. (Inbound TCP 1041)

To play streaming video, your personal firewall needs to allow the device to connect to your PC via the Inbound TCP 1041 port.

- What are the possible connection combinations?

APG connection	System	Projector	Internet	Remark
WLAN	WLAN	V	X	By 192.168.100.10
WLAN	WLAN+Wired	V	V	By 192.168.100.10 Please execute application first if you need to go on Internet
WLAN+Wired	WLAN	V	V	By LAN DHCP address Please enter the IP address on welcome screen
WLAN+Wired	WLAN+Wired	V	V	By LAN DHCP address Please enter the IP address on welcome screen
Wired	Wired	V	V	By LAN DHCP address Please enter the IP address on welcome screen
Wired	Other access point	V	V	By LAN DHCP address Please enter the IP address on welcome screen

- How do I register the APG on the firewall exceptions list for Windows XP SP2?

1. Click **Start > Control Panel**.
2. Click **Security Center > Windows Firewall** when the **Control Panel** window opens.
3. Click the **Exceptions** tab and then **Add Program...** when the **Windows Firewall** window opens.
4. Click **Acer Projector Gateway** to allow connection with external devices under **Programs** when the **Add a Program** window opens.

- What is the Gatekeeper?

The Gatekeeper is designed for ensuring enterprise network security for the APG.

All Block can block guest users from wireless access to the office LAN.

All Allow allows guest users to access the wireless office LAN.

Internet Only allows Guest Users to use the Internet wirelessly, while restricting access to the Intranet.

- Can I use wireless and wired connections simultaneously?

If you have a wired Internet connection connected to the APG, it will obtain an IP address automatically and allow wireless connectivity simultaneously.

You have to configure the Gatekeeper setting to All Pass or Internet Only.

- Why is the wireless transfer rate slow?

The transfer rate may be slower in some operating environments (depending on

factors such as the location, distance or radio signals).

- Does the APG support audio projection while presenting?

No, APG can only project your PC's screen without audio.

- What should I do if the display isn't smooth?

Try using 1024 x 768 resolution.

- Why is my presentation sluggish while presenting with the projector?

If your PC screen resolution is higher than the device resolution, stretching screen data will consume your CPU's computing power which might cause your PC to seem a little sluggish.

- Which video formats are supported?

MPEG1/MPEG2/MPEG4/WMV9/AVI, DivX 3.11, 4x, 5x, XviD/ASF/VOB (without encryption)

- Video is not smooth.

The wireless transfer rate may be too slow or the video resolution may be too high. Typically, the APG can support QCIF, CIF, 480P, 576P, 720P and 1080i resolution with full speed under optimum wireless environments.

- Cannot play this file. This file may be damaged.

This error message appears when the file cannot be played due to possible data corruption.

- As to security setting, Why WPA2 doesn't work even input right password ?

Check your operation system. Vista OS default cover WPA2, but XP doesn't support WPA2. Two ways to solve this condition: one is to refer to below URL from Microsoft. You can solve this condition by installing this extra hotfix.

<http://support.microsoft.com/kb/893357/en-us/>

The other is to upgrade upto XP SP3(Service pack 3).