

HomeNet



Gateway User Guide

Gateway User Guide – Table of Contents

HomeNet Gateway User Guide

Gateway User Guide – Table of Contents	2
Introduction.....	3
What is the HomeNet Gateway (Gateway)?.....	3
How do I use it?	4
Home Network.....	9
Introduction.....	9
Manage your Network	9
Wireless Networking	11
Introduction.....	11
Wireless connection.....	11
Establishing a wireless connection	15
Broadband Link	22
Access Control (Parental Controls)	23
Introduction.....	23
Content Screening.....	23
Time Schedule	29
Access Control Log.....	32
Firewall	33
Introduction.....	33
Firewall Settings	33
Firewall Monitor	34
Remote Access.....	37
Introduction.....	37
Remote Access Summary	37
Set Up Remote Access.....	38
File Sharing.....	39
Domain Name	40
Your Gateway	41
Personal Reference Page.....	42
Appendix 1 – About E-mail.....	43
PC based e-mail (e-mail programs)	43
Web based e-mail (webmail)	43

Introduction

What is the HomeNet Gateway (Gateway)?

The Gateway is an all-in one home networking solution that offers you control, security, and freedom.

With the HomeNet Gateway you can:

- set up your home network (wired or wirelessly) to connect your computers and other devices together,
- add digital devices,
- configure and implement parental controls on internet content and access,
- protect your network with a firewall feature, and
- remote access into your home network via internet browsers from wherever you find yourself.

How do I use it?





Once the installation of your HomeNet Gateway is complete, open your network browser and type in <http://home> or <http://gateway.2wire.net>

This will lead you to your easy-to-use Gateway User Interface where you can view and manage all your settings and logs.




Home Services Settings Site Map

Summary

 Broadband ↓ Kbps ↑ Kbps	 Wireless Network Name 2WIRE609	 Firewall Status Enabled Access Controls Remote Access	 3800HGV-B Gateway Serial Number: 240711047609
---	--	--	---




Home Network Devices

 STC0031329 Device Details

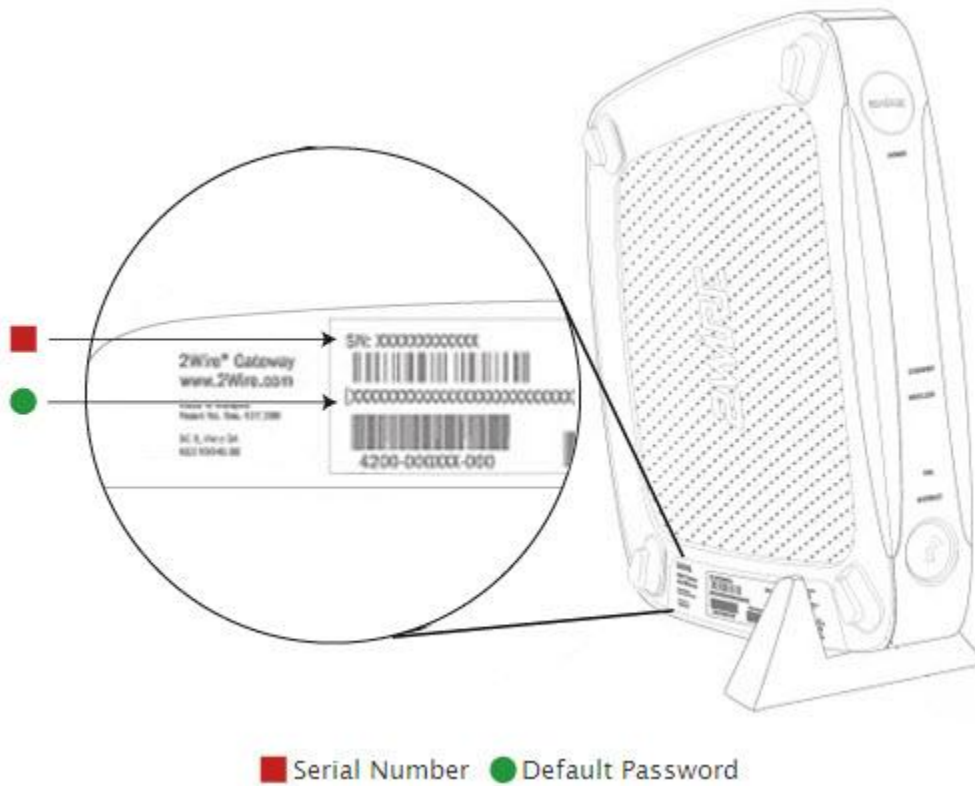
Top Networking Features

- [Wireless](#) - modify security or settings
- [Refresh your Broadband Connection](#) - reconnect your broadband connection
- [Restart your System](#) - reboot
- [Home Networking](#) - find a computer, share a file
- [Remote Access](#) - access your network and files and system via the Web
- [System Password](#) - secure your system with a password
- [Internet security](#) - monitor attempted and blocked attacks
- [Gaming and Communications](#) - modify your firewall settings
- [Child-Proof your Network](#) - Setup access restrictions

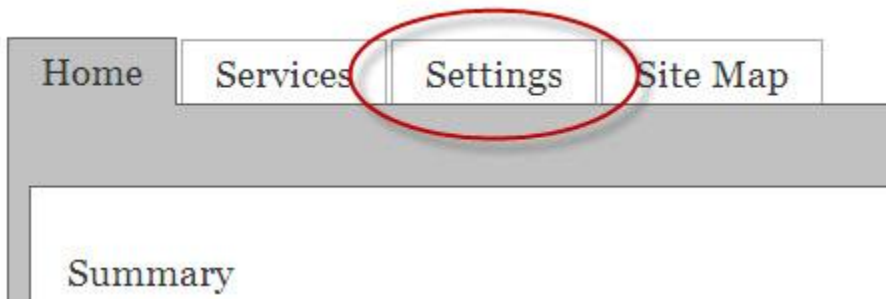
Quick Service Links

-  [Access Controls](#)
-  [Content Screening](#)
-  [Web Remote Access](#)

It is strongly recommended that you update the system password for your Homenet Gateway. The default password is the Wireless Network Key, found on the transparent sticker which is located on your Gateway.



To update your system password, click the Settings Tab at the top of your Gateway user interface,



Then click password,



You will be taken to a screen where you are asked to enter in the existing system password. If you have not already set your system password, it will be the Wireless Network Key, found on the bottom of your gateway,

Home	Services	Settings	Site Map
------	----------	----------	----------

Login

Password:

Enter in the default password, and you will be taken to the screen where you can change your password. You are able to set your password protection from this screen, which requires your password be entered whenever any Homenet system settings are changed.

Home Services **Settings** Site Map

System Info **Broadband** LAN Firewall Diagnostics

Status Password Date & Time Event Notifications

Administration Password

The administration password restricts system configuration changes from being made to users who know the password. It is strongly recommended that you enable password security to protect your system from unauthorized changes.

Enable Password Protection:

Enter Current Password:

Select Password:

- Use the Default Wireless Network Key as password (printed on the base of the system)
- Create or Edit a Custom Password:
 - Enter New Password:
 - Confirm New Password:
 - Enter a Password Hint:

Note: When you choose to password protect the system settings, you should also set up a password hint in case you forget your password. This hint can be a word, phrase, or question that will help you remember your password if you forget it.

Be sure to click “Save” at the bottom of the page after entering your new password and password hint.

Home Network

Introduction

The Home Network feature connects your computers and other devices (eg. Playstation, Xbox, Palm Pilot, etc) together, so that they can share files, printers and the Internet.

Manage your Network

Under the Home tab, there is a heading that reads “Home Network Devices.” Under this heading, every device connected (both wired and wirelessly) to the Homenet Gateway will be listed.

Home Network Devices



Clicking the “Device Details” link next to each device listed under this heading will bring you to a page outlining the MAC address of each connected device, as well as other details and settings.

If you click on the **Settings** tab, you will see a range of more complex options, diagnostics, and settings. You may want to refer to www.sasktel.com/support/internet/other/homenet and select HomeNet (2Wire help) for more instructions before modifying these settings.



Home
Services
Settings
Site Map

System Info
Broadband
LAN
Firewall
Diagnostics

Status Wireless Wired Interfaces DHCP IP Address Allocation Statistics

Private Network

Router / Gateway Address: 172.16.1.254
Subnet Mask: 255.255.255.0

Private Network DHCP Info:

Range:	172.16.1.63 – 172.16.1.253
Allocated	3
Remaining	188
Timeout	1440 minutes

Interfaces

Interface	Status	Active Devices	Inactive Devices
🔌 Ethernet	Enabled	1	0
🔌 USB	Disabled	0	0
📶 Wireless	Disabled	0	0
🏠 HomePNA1	Enabled	0	0

Wireless

Wireless Channel: Inactive (Auto)
Wireless Power Level: 4
SSID Name: 2WIRE609

Status:	Disabled
SSID Broadcast:	Enabled
Security:	WEP-Open

Wireless Networking

Introduction

With the HomeNet Gateway you can set up a wireless network within your home so your desktop computer or laptop can access your network without cables. You can keep adding devices and computers to a wireless network – and experience a new level of freedom and convenience.

Wireless connection

By default the Gateway will come with wireless capability disabled. You will need to enable it before setting up any wireless connection.

Enabling wireless capability

1. Using a computer with a wired connection go to your Gateway home page by typing <http://home> or <http://gateway.2wire.net> into the address line of your Internet browser. You will see your Gateway home interface. Click on the Wireless Icon

The screenshot displays the 2Wire Gateway web interface. At the top left is the SaskTel logo, and at the top right is the 2WIRE logo. Below the logos is a navigation menu with tabs for Home, Services, Settings, and Site Map. The main content area is titled "Summary" and features four primary sections: Broadband (with a speedometer icon and Kbps indicators), Wireless (with a wireless antenna icon and a black circle around it), Firewall (with a shield icon and "Status Enabled"), and 3800HGV-B Gateway (with a device icon and "Serial Number: 240711047609"). Below the summary are sections for "Home Network Devices" (listing STC0031329 with a "Device Details" link) and "Top Networking Features" (listing links for Wireless, Refresh your Broadband Connection, Restart your System, Home Networking, and Remote Access). On the right side, there is a "Quick Service Links" box containing links for Access Controls, Content Screening, and Web Remote Access.


2. Check the ENABLE box under **Wireless Interface**. See image below.



Home Services **Settings** Site Map

System Info Broadband **LAN** Firewall Diagnostics

Status Wireless Wired Interfaces DHCP IP Address Allocation Statistics

 **Warning** Modifying the settings on this page can impact the ability of devices to access your wireless network.

Wireless Interface

Enable Wireless Interface: Default: Enabled

Network

Network Name (SSID): 2WIRE609

SSID Broadcast: Default: Enabled

Wireless Channel: Auto Current

Security

Wireless Security: Default: Enabled

Authentication Type: WEP-Open

Wireless Key: Use default encryption key printed on the System Label:

3. Under the **Advanced Settings** header – click on the SAVE button.

MAC Filtering [EDIT BLOCKED / ALLOWED DEVICE LIST](#)

Advanced Settings

Power Setting: 4 Default: 4

Wireless Mode: 802.11b/g Default: 802.11b/g

DTIM Period: 1 Default: 1

Maximum Connection Rate: 54 Mbps Default: 54 Mbps

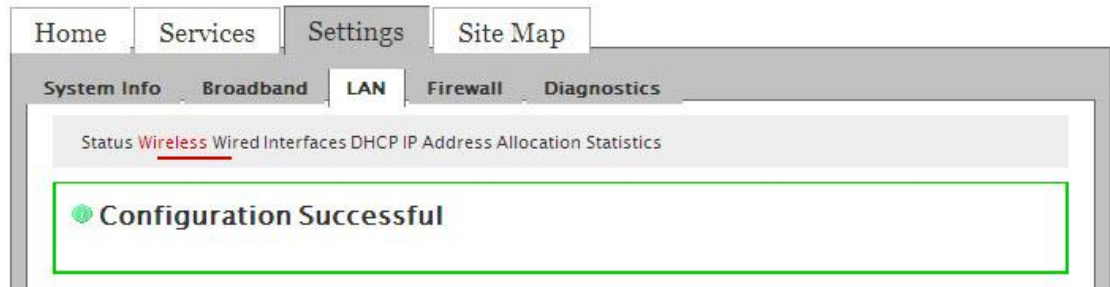
Wi-Fi Protected Setup:

Wi-Fi Protected Setup: Default: Enabled

PIN Enter the PIN:

Status:

4. You will receive a message reading CONFIGURATION SUCCESSFUL once your changes have been saved.



You are now ready to establish a wireless connection.

Establishing a wireless connection

Before you get started you will need to locate your **serial number** and **wireless network key**. These are located on the bottom of your Gateway.



To establish a wireless connection with the Gateway you need either a wireless-enabled note book/laptop or a computer with a wireless network adaptor* installed.

1. Either plug your wireless adaptor into your computer's USB port or put your wireless PC card into your laptop.**
2. Configure your wireless adaptor to work with the Gateway. The following instructions show you how to manually configure your wireless network in Windows XP.***

* You need to provide the wireless card or adaptor.

** If you experience difficulties installing your wireless card or adaptor contact the manufacturer for support.

*** Please visit the support area of www.2Wire.com for wireless configuration instructions for other operating systems.

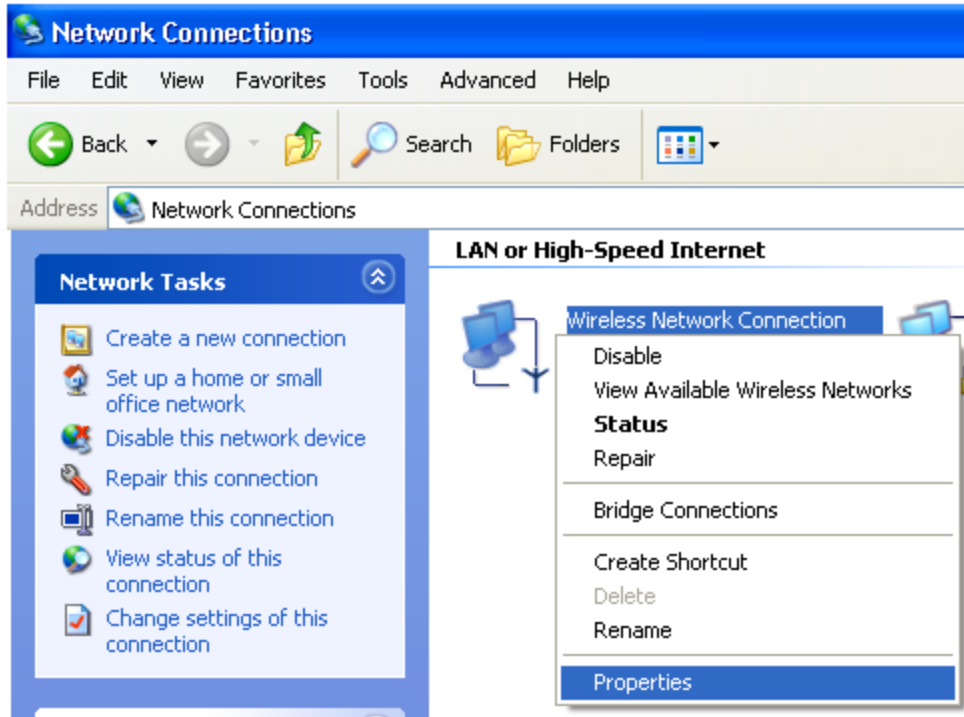
- Press **start** and then select **Control Panel**.



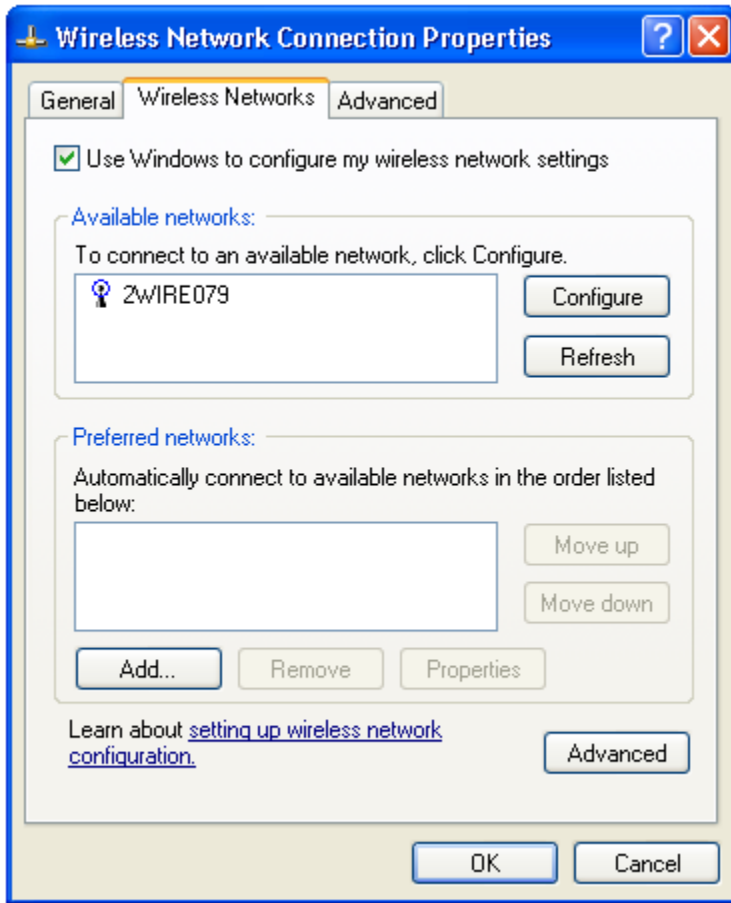
- Select **Network and Internet connections**.



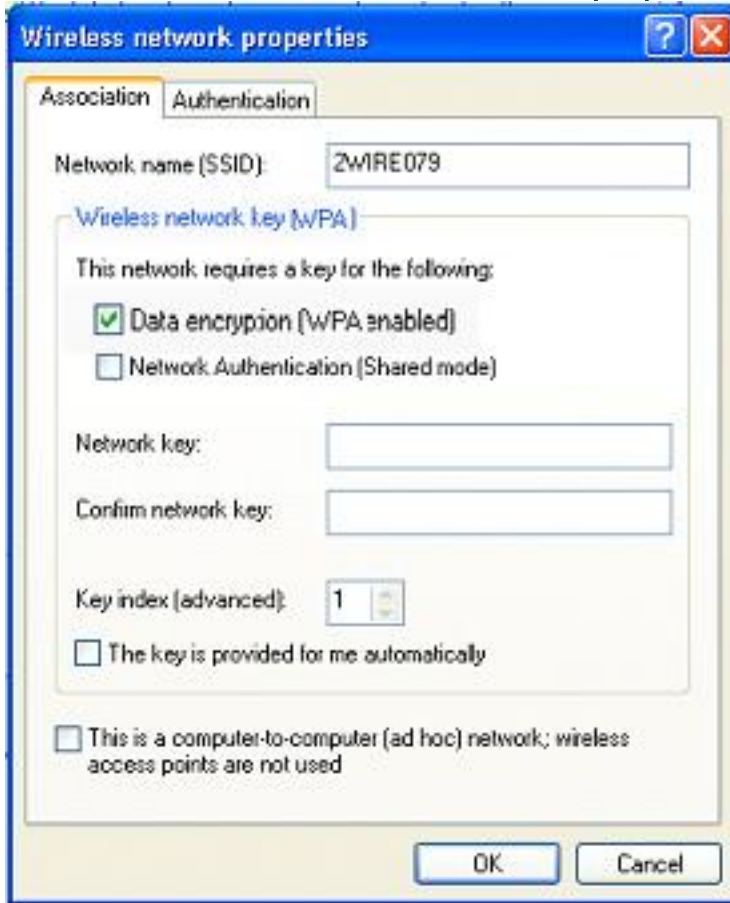
- Right click on the **Wireless Network Connection** icon and choose **Properties**.



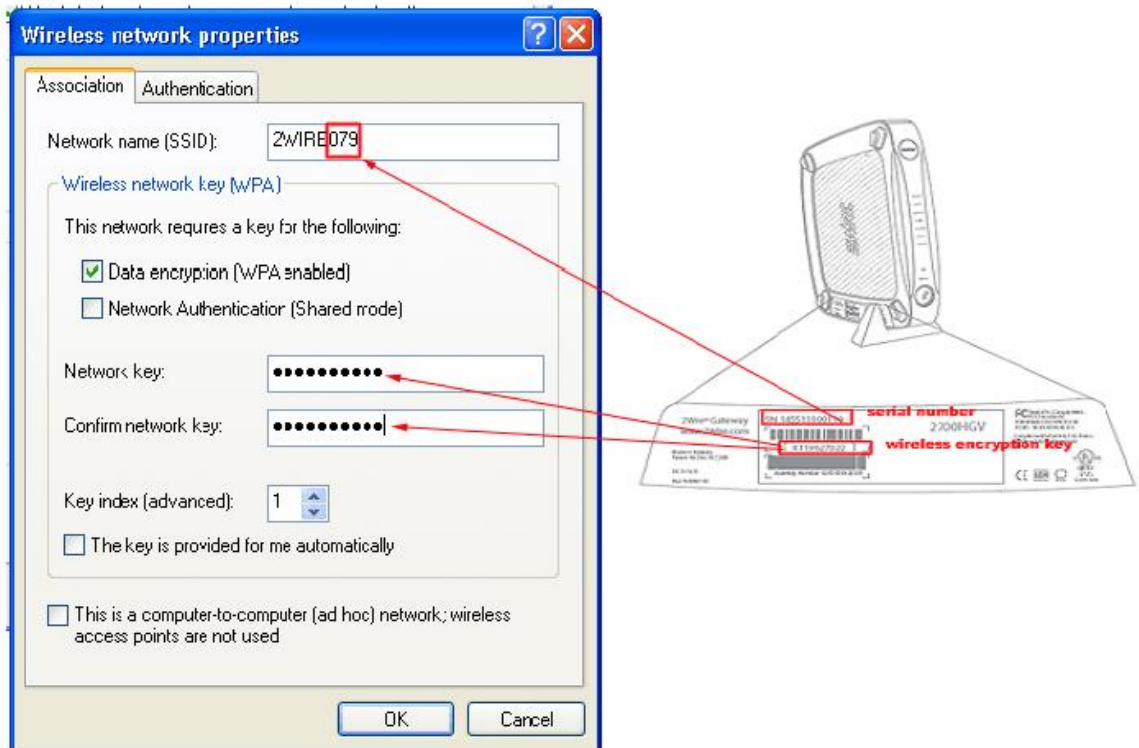
- Click on the **Wireless Networks** tab. In the **Available networks:** window you should see the **2WIREXXX** (eg. 2Wire079) icon, if so press the **CONFIGURE** button beside the window; if not, move down to the **Preferred networks:** area and click on the **ADD** button immediately below. Both actions will bring up the **Wireless network properties** screen.



- The **Network name (SSID)**: should be entered (if it is not already there by default) in the format **2WIREXXX** (XXX being the last 3 digits of the Gateway serial number.)
- Next, uncheck the box next to **The key is provided for me automatically**.



- Enter the 10-digit encryption key from the bottom of the Gateway into the **Network key:** field and again in the **Confirm network key:** field. Click the OK button.



Click OK on the **Wireless network properties** screen. You're finished!

3. To add another computer to your wireless network you will need to follow steps 1. and 2. each time.

Important notice regarding Wireless Networking:

When you enable wireless networking, by default, the wireless security is automatically set to WPA encryption. This ensures the gateway does not have an open wireless connection.

We recommend you keep the gateway wireless security at WPA instead of the traditional WEP for greater wireless security, if your computer's wireless card can support it.

WPA (WiFi Protected Access) is the newest standard for WiFi security, which offers a measure of security that goes far beyond what WEP is capable of. WEP encryption has many shortcomings in terms of security that have been well documented, and as such, we recommend that you use WPA encryption as opposed to using WEP encryption if at all possible.

For detailed setup instructions, visit www.sasktel.com/support.

Warning



Incorrectly configuring the firewall or wireless network or file-sharing on your home network can leave your internet connection unsecured and your files 'open' for the world to see. The resulting vulnerabilities can result in compromised operating systems, file theft and various malicious actions such as open proxies, worms viruses etc.

Broadband Link



You can click on the **Broadband** icon to see the status of your connection to the Internet.

to see the status of your connection to the Internet.

SaskTel  

Home Services Settings Site Map

System Info Broadband LAN Firewall Diagnostics

Status Link Configuration

Summary Status

Internet: Not connected
DSL Link: Not connected

Internet Details

Broadband Link Type:	Built in modem - VDSL
Connection Type:	Direct IP (DHCP or Static)
Current Internet Connection:	
IP Address:	xxx.xxx.xxx.xxx
Subnet Mask:	xxx.xxx.xxx.xxx
Default Gateway:	xxx.xxx.xxx.xxx
Primary DNS:	xxx.xxx.xxx.xxx
Secondary DNS:	xxx.xxx.xxx.xxx
Host Name:	--
Domain:	--
MAC Address:	00:1b:5b:3a:7c:00
MTU:	--

DSL Details

Modem Type:	Built in modem - VDSL	
Connection Type:		
DSL Line:	RJ-11	
	Down	Up
Rate:	0 kbs	0 kbs
Max Rate:	0 kbs	0 kbs
Noise Margin:	0.0 dB	0.0 dB
Attenuation:	0.0 dB	0.0 dB
Output Power:	0.0 dBm	0.0 dBm
Protocol:	--	
Channel:	--	
DSLAM Vendor Information:	Country: [--] Vendor: [--] Specific: [--]	
Attenuation @ 300kHz:	0.0 dB	
Required Impulse Noise Protection:		
Final Receive Gain:	0.0 dB	Ok

Traffic Statistics

IP Traffic	Bytes	Packets	Errors	%
Transmit:	54554176	0	0	0
Receive:	54553740	0	0	0

Access Control (Parental Controls)

Introduction

Your kids enjoy Internet activities – gaming, e-mail, chatting with friends, and doing research for school projects; but with unlimited Internet access comes increased concern about what kids have access to, and how much time they’re spending online. Parents need an easy way to maintain control of what their children see and do on the Internet and when.

To resolve this Parental Controls offers **Content Screening**, **Scheduled Screening**, and **Internet Access Control**. These features mean you have the power to protect your kids from Internet threats and effectively monitor their online experiences.

From the Home tab, click on the Access Controls link under the FIREWALL icon to view the **Access Control Summary** page.



From this Summary page, you are able to view the various devices connected to your network (and the restrictions that may be in place for each device), or to access either Time Schedule restrictions or the Content Screening restrictions.

Content Screening

Content screening allows you to protect your children from questionable sites, identify categories, such as hate, pornography or violence that you don’t want your child to view, and create a list of approved sites.

The HomeNet Gateway, via a continually updated website database, also identifies and categorizes new sites or lists them as “unrated” so you can decide whether you want to approve them or not.

Click on the CONTENT SCREENING link shown below.



This will bring you to the **Edit Content Screening Settings** page where you can assign categories to Screening Groups and block and approve specific sites.



Home Services Settings Site Map

Status Access Control Remote Access

Summary Time Schedule Content Screening

Content Screening

Computer Web Content Restriction

Content screening allows you to block specific computers from being able to view objectionable material on the World Wide Web.

To set up Content Screening for a computer, select an appropriate pre-configured screening group below for that computer and click SAVE. You may customize the content screening groups and also block or allow specific Web sites.

Computer	Content Screening Group
tank	No Restriction <input type="button" value="v"/>
STC1027368	No Restriction <input type="button" value="v"/>
STC0031329	No Restriction <input type="button" value="v"/>
New computer default setting	No Restriction <input type="button" value="v"/>

Content Categories

To make it easier to block undesirable content, a number of content categories have been developed. Professional researchers working with a third-party maintain a database of Web site addresses that fall under specified content categories. This database is used to filter content for your children.

There are three content screening categories or groups:

No Restriction Setting

This group has no restrictions. A computer in this group will be able to access or surf any website. This setting is most appropriate for adults.

Teen

This group has limited website access. For this list the administrator can select categories they wish to block such as, Adult/Sexually Explicit websites, and Criminal Skills websites. This setting is best for teens or children ages 10 – 18.

Kids

This group has the most restrictions of all of the groups to make sure that kids can be protected while having fun on the Internet. This setting is best for kids 9 and under.

In addition, you can use the black list and white list features of the content screening application to manually block or above below.

Step 1: Blocking Content Categories for Screening Groups

You can edit the Teens or Kids screening groups by selecting or deselecting the categories you think the group should have access to.

On the Content Screening page, each device connected to the Homenet Gateway is listed for you, with a drop-down menu to the right, under the CONTENT SCREENING GROUP header.

Computer	Content Screening Group
tank	No Restriction ▼
STC1027368	No Restriction ▼
STC0031329	No Restriction ▼
New computer default setting	No Restriction ▼

Save

Below this list of devices and related restriction group is the CUSTOMIZE CONTENT SCREENING GROUPS area, where you are able to customize what type of web page categories and web applications are to be restricted.

This will bring you to the Step1: **Block Content Categories for this Screening Group** page.

Customize Content Screening Groups

You may specify categories of content to BLOCK by checking the category for the desired screening group below. You may also add specific desired sites manually to the Approved or Blocked Sites list below.

Block Category	Action	"Kids" Group	"Teens" Group
Adult / Sexually Explicit	Block	<input checked="" type="checkbox"/>	<input checked="" type="checkbox"/>
Advertisements	Block	<input checked="" type="checkbox"/>	<input checked="" type="checkbox"/>
Arts & Entertainment	Block	<input checked="" type="checkbox"/>	<input type="checkbox"/>
Chat	Block	<input checked="" type="checkbox"/>	<input type="checkbox"/>
Criminal Skills	Block	<input checked="" type="checkbox"/>	<input checked="" type="checkbox"/>
Drugs, Alcohol & Tobacco	Block	<input checked="" type="checkbox"/>	<input checked="" type="checkbox"/>
Education	Block	<input checked="" type="checkbox"/>	<input type="checkbox"/>
Finance & Investment	Block	<input checked="" type="checkbox"/>	<input type="checkbox"/>
Food & Drink	Block	<input checked="" type="checkbox"/>	<input type="checkbox"/>
Gambling	Block	<input checked="" type="checkbox"/>	<input checked="" type="checkbox"/>
Games	Block	<input checked="" type="checkbox"/>	<input type="checkbox"/>
Glamour & Intimate Apparel	Block	<input checked="" type="checkbox"/>	<input type="checkbox"/>
Government & Politics	Block	<input checked="" type="checkbox"/>	<input type="checkbox"/>
Hate Speech	Block	<input checked="" type="checkbox"/>	<input checked="" type="checkbox"/>
Health & Medicine	Block	<input checked="" type="checkbox"/>	<input type="checkbox"/>
Job Search & Career Development	Block	<input checked="" type="checkbox"/>	<input type="checkbox"/>
Kid's sites	Block	<input type="checkbox"/>	<input type="checkbox"/>
Lifestyle & Culture	Block	<input checked="" type="checkbox"/>	<input type="checkbox"/>
News	Block	<input checked="" type="checkbox"/>	<input type="checkbox"/>
Personals & Dating	Block	<input checked="" type="checkbox"/>	<input checked="" type="checkbox"/>
Photo Searches	Block	<input checked="" type="checkbox"/>	<input type="checkbox"/>
Religion	Block	<input checked="" type="checkbox"/>	<input type="checkbox"/>
Sex Education	Block	<input checked="" type="checkbox"/>	<input type="checkbox"/>
Search Engines	Block	<input checked="" type="checkbox"/>	<input type="checkbox"/>
Shopping	Block	<input checked="" type="checkbox"/>	<input type="checkbox"/>
Sports	Block	<input checked="" type="checkbox"/>	<input type="checkbox"/>
Streaming Media	Block	<input checked="" type="checkbox"/>	<input type="checkbox"/>
Unrated	Block	<input checked="" type="checkbox"/>	<input type="checkbox"/>
Violence	Block	<input checked="" type="checkbox"/>	<input checked="" type="checkbox"/>
Weapons	Block	<input checked="" type="checkbox"/>	<input checked="" type="checkbox"/>
Web-based Email	Block	<input checked="" type="checkbox"/>	<input type="checkbox"/>
All Other Categories	Block	<input checked="" type="checkbox"/>	<input type="checkbox"/>

To block access to all Web sites that might be included in any category, just check the box next to that category.

Once you have checked all the categories you want blocked for that screening group (either Kids or Teens) click the SAVE button at the bottom of the section to go to Step 2.

Step 2: Block and Approve Sites for this Screening Group

After selecting the categories of content to be blocked, you can block or approve specific sites for all computers assigned to the screening group.

Below the CUSTOMIZE CONTENT SCREENING GROUPS section of this page is the area where you are able to block or approve sites for a specific screening group.

Block or Allow Access to Specific Sites

In addition to selecting content categories above, you can block or allow access to specific Web sites. Note that sites on this list override the content category settings above. To add sites to the list to block or allow, enter the Web site address, select either Block or Allow as the desired action, and click ADD TO LIST.

Specific Site Access for Kids

Site URL:

Select Access Type: Block Allow

Site Access Lists for Kids

Blocked Web Sites
No Sites listed

Allowed Web Sites
No Sites listed

Specific Site Access for Teens

Site URL:

Select Access Type: Block Allow

Site Access Lists for Teens

Blocked Web Sites
No Sites listed

Allowed Web Sites
No Sites listed

You can block or allow access to specific Web sites. Note that sites on this list override the content category settings above. To add sites to the list to block or allow, enter the Web site address, select either Block or Allow as the desired action, and click ADD TO LIST.

NOTE: To save any changes within the CONTENT SCREENING section, you will be prompted to enter your password.

To remove a Web site from one of the lists, highlight the site and click DELETE.

To stop blocking all of the sites listed in the Blocked Sites list (in other words, allow all sites), click the button that reads DISABLE BLOCKED LIST.

To stop permitting access to the Approved Sites list, click the button that reads DISABLE ALLOWED LIST.

Now that you have identified which categories each screening group can access, and which sites are approved and blocked regardless of their category listing, you are ready to assign a screening group to each computer on your network.

Step 3: Assign Computers to Screening Groups

Each computer on your network can be set up for a different level of Internet access depending on which Screening Group the computer is assigned to.

Return to the Content Screening home page, and at the top of the page, you will be presented with a list of all devices connected to your Homenet Gateway. To the right of these devices will be individual drop-down menus that contain the following options: No Restriction, “Kid’s” Group, and “Teens” Group. Simply select which group you would like each device to be a part of, and click the SAVE button at the bottom of this section.

Content Screening

Computer Web Content Restriction

Content screening allows you to block specific computers from being able to view objectionable material on the World Wide Web.

To set up Content Screening for a computer, select an appropriate pre-configured screening group below for that computer and click SAVE. You may customize the content screening groups and also block or allow specific Web sites.

Computer	Content Screening Group
tank	No Restriction
STC1027368	No Restriction
STC0031329	"Teens" Group
New computer default setting	No Restriction

Save

Time Schedule

With Internet Access Control you can:

- decide when or how long kids can surf, chat or game,
- set up an Internet schedule for each child in your home,
- block or allow specific applications like Web browsing, Instant Messaging, other Internet applications or restrict ALL Internet usage,
- limit internet access of devices such as PlayStation or Xbox, and
- limit Internet access by time of day or day of the week.

Click on the TIME SCHEDULE link under the **Access Control** section to get started.

Home Services Settings Site Map

Status Access Control Remote Access

Summary Time Schedule Content Screening

Time of Day Access Schedule

Time of Day Access controls allow you to define a time schedule for each device to access the Internet for either Web Browsing only, Instant Messaging or All Other Applications.

1) Select a Device:

You have chosen tank
 Choose STC1027368
 Choose STC0031329
 Choose DEFAULT

2) Choose Allowed Access Type:

Full access (all the time)
 Based on allowed time schedule below

3) Add a Time Schedule Block: (2 blocks per category)

Access Type	Days	From	To
<input type="checkbox"/> Allow Web Browsing	Disabled ▼	Midnight ▼	Midnight ▼
	Disabled ▼	Midnight ▼	Midnight ▼
<input type="checkbox"/> Allow Instant Messaging	Disabled ▼	Midnight ▼	Midnight ▼
	Disabled ▼	Midnight ▼	Midnight ▼
<input type="checkbox"/> Allow All Other Applications	Disabled ▼	Midnight ▼	Midnight ▼
	Disabled ▼	Midnight ▼	Midnight ▼

You will come to the **View Time Schedule Control Settings** page which displays the restrictions applied to each computer on your network. The page also provides details about the restriction categories that have been assigned and displays a calendar that indicates the time intervals that each category is blocked or allowed.

3) Add a Time Schedule Block: (2 blocks per category)

Access Type	Days	From	To
<input type="checkbox"/> Allow Web Browsing	Disabled	Midnight	Midnight
	Disabled	Midnight	Midnight
<input type="checkbox"/> Allow Instant Messaging	Disabled	Midnight	Midnight
	Disabled	Midnight	Midnight
<input type="checkbox"/> Allow All Other Applications	Disabled	Midnight	Midnight
	Disabled	Midnight	Midnight

To set up access on a specific computer select a computer from the 1. **Click on a device from the list under the SELECT A DEVICE header.** Then click on the BASED ON ALLOWED TIME SCHEDULE BELOW option under the CHOOSE ALLOWED ACCESS TYPE header.

1) Select a Device:

-  [You have chosen tank](#)
-  [Choose STC1027368](#)
-  [Choose STC0031329](#)
-  [Choose DEFAULT](#)

2) Choose Allowed Access Type:

- Full access (all the time)
- Based on allowed time schedule below

For each computer on the network, you can block access to all Internet applications or block access to specific types of applications.

Internet Access Restriction

To restrict all Internet access, regardless of category, or day of the week, select which device you would like to restrict, and then click “Based on allowed time schedule below,” without changing any settings below.

Now you can begin to specify at what times your children can use the Internet, Messaging and any other applications accessible on your network.

Select Allowed Applications and Times...

If you wish to allow your children controlled access to the web and games, here is the place to do it.

Click the ALLOW checkbox for the application category that you wish to enable. Select a specific day, weekdays, or weekends from the dropdown menu. Specify the From and To times you want the specific category to be blocked.

When you have finished setting up the access schedule click the SAVE button at the bottom right hand corner of the page.

Access Control Log

If you want to view details of your child's restricted usage of applications available on your network click on the **Summary** link on the top navigation bar.

Home Services Settings Site Map

Status Access Control Remote Access

Summary Time Schedule Content Screening

Access Control

Device	Time of Day Access Schedule	Content Screening
tank	No restrictions	No restrictions
STC1027368	No restrictions	No restrictions
STC0031329	No restrictions	No restrictions
New computer (default settings)	No restrictions	No restrictions

Log

Time	Date	Type	Site
------	------	------	------

Clear Log

Parental Controls let you rest easy about your child's use of the Internet.

Firewall

Introduction

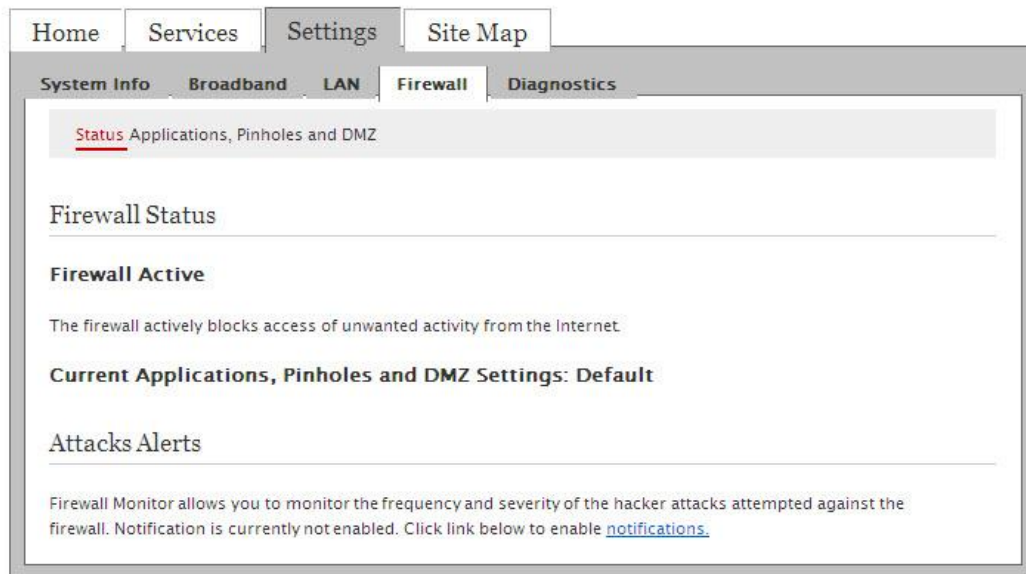
The HomeNet Gateway's Firewall Monitor continuously assesses threats to the local network, while automatically keeping itself current with software updates. You can decide when and how to receive notification of attacks and view detailed logs through the Gateway's user interface.

Firewall Settings

The Firewall feature of the HomeNet Gateway is ready to go – you don't need to configure any settings to get protection while on the Internet.



Click on the Firewall icon on the top menu to get to the **View Firewall Summary** page.

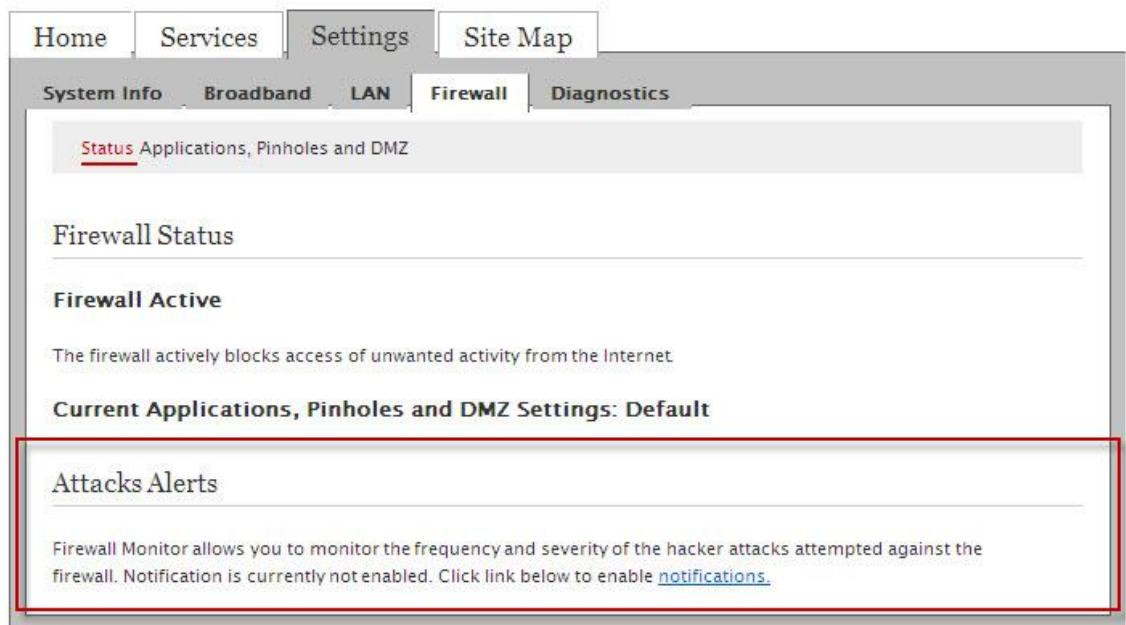


If you decide, either for the purpose of gaming, messaging or file sharing etc., that you want to allow other people limited access from the Internet to a program on your home network, you can change the firewall settings to allow this communication to pass through.

Please go to the support area of www.2wire.com and type in “firewall guide” for detailed instructions on how to edit your firewall configuration.

Firewall Monitor

The Firewall Monitor keeps tabs on attacks on your Firewall. On the View Firewall Summary the logs of possible attacks is located at the bottom of the page.



Top Attackers

At the bottom of the Firewall Status page, under the Attacks Alerts heading, there will be a list of recent attacks made on your network.

Top Attackers

IP Address	Attacker Domain	Total Number of Attacks			
		High Risk	Med Risk	Low Risk	
111.111.111.1	Not available	0	0	3	View attack details
111.111.111.1	Not available	0	0	2	View attack details

This page displays the following attack categories and the number of each type of attack that was blocked today and this week:

Total attacks Blocked

- **High risk**
A serious attempt by the attacker to disable your network.
- **Medium risk**
These attacks represent a modest level of intent by the attacker to disable your network.
- **Low risk attacks**
No serious threat to the network. Typically, these are probing attacks used by hackers to determine those networks on which a more serious attack will be conducted.

You are able to view the details of the attack, by clicking VIEW ATTACK DETAILS.



Home Services Settings Site Map

System Info Broadband LAN Firewall Diagnostics

Status Applications, Pinholes and DMZ

View Attack Details

Internet Domain: [Redacted]
Internet Address: 111.111.111.11

	Today	This Week
Total Attacks Blocked	0	3
High Risk	0	0
Med Risk	0	0
Low Risk	0	3
TCP Port Scan Detected, Packet Dropped	0	3

For further information on Firewall settings and reports please refer to www.sasktel.com/support/internet/other/homenet/

Remote Access

Introduction

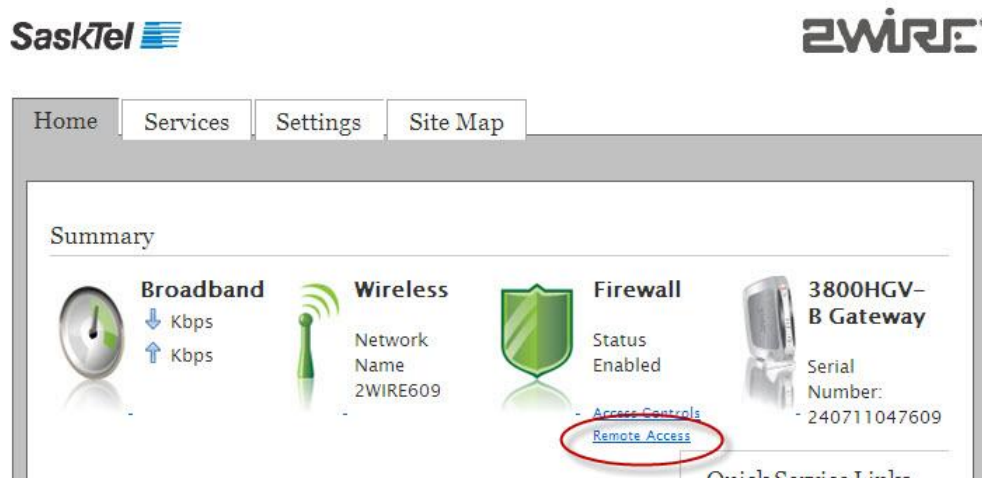
The Remote Access feature gives you a fast, easy, and secure way to monitor and manage the Gateway remotely over the Internet. With remote access you can monitor your children's' Internet usage, change Parental Controls and firewall settings and view detailed logs just as if you were at your own computer at home.

With Remote Access you also get:

- **File sharing:** Share files with friends and family. Place content, such as photos or digital music, in the appropriate public access folders. Anyone with an Internet connection and permissions can access approved files.
- **Security:** The Web Remote Access application allows access to be authenticated and encrypted between the remote Web browser and the gateway.
- **Easy access:** Includes an Internet address for easy access to the local network using a standard Web browser and Internet connection.

Remote Access Summary

Click on the Remote Access link on the top menu underneath the Firewall icon to get to the **View Remote Access Summary** page.



Set Up Remote Access



Home Services Settings Site Map

Status Access Control Remote Access

Web Remote Access

Remote Access (via Web Browser)

- Forgot an important file on your computer at home?
- Want to monitor your kids Internet use while you're at work?
- Need to administer your system or network settings remotely?

Remote Access allows you to access your local network from outside your home using the Internet. Using a standard Web browser, you can download files that have been shared on your networked computers. Access shared files on PCs, manage services, view cameras or remotely administer your system from anywhere.

Remote Access: Enable (Requires Web browser with 128-bit SSL security supported)

Administer system: Enable (View logs and modify settings remotely)

Access shared files: Enable (Compatible with computers with shared files and folders on Windows 98, ME, 2000, XP, and mac OSX 10.2 and above)

Web Address: Personal Domain not setup [Edit Domain Name](#)

A personalized Domain Name lets you create a simple Internet name that you can type into your web browser so you don't have to remember your current IP address. The accompanying Dynamic Domain Name Server feature also automatically updates your Domain Name whenever your service provider changes your system's IP address so you can always reach your system remotely even if you are running Dynamic /DHCP addressing

Enter new password:

Confirm password:

Enhanced login protection: Enable (For added security, you may choose to automatically suspend Remote Access temporarily after a specified number of failed login attempts)

suspend for: 1 hour

after: 10 essful login attempts

Remote Access HTTP Port: (default uses port 80)

Remote Access SSL Port: (default uses port 443)

By default, Remote Access uses standard Web ports to connect from a remote location. However, if you are hosting a Web server on your network, you will need to select different ports for Remote Access to avoid port conflicts with your Web server.

On the **Edit Web Remote Access Password and Settings** page, first click the ENABLE checkbox next to the field that reads “REMOTE ACCESS” to allow secure remote access to your network. Then choose a password in the **Change Password** box, and settings for the **Enhanced Login Protection** area. Once you are finished click the SAVE button at the bottom right of the page. A confirmation message will populate at the top of the page upon successful saving.

Now, authorized remote users, can access your Home Network. If you or other network users type in your IP address or Domain name (see setup below) you/they will come to the following screen where a password must be entered to gain admittance to the home network with all its features and files.



The screenshot shows a web page titled "Welcome to the Remote Access Center". Below the title is a horizontal line. Underneath, it says "Password Required". A paragraph of text reads: "For secure access to the shared resources on your home network, please start a new session by entering your remote access password and clicking SUBMIT." Below this text is a "Password:" label followed by a text input field. At the bottom left of the form area is a "Submit" button.

File Sharing

Only computers that have file sharing enabled can be viewed via Remote Access; so it is important to set up file sharing on EACH computer on your network that you wish to access remotely.

You can enable file sharing on your computer by following your computer's manufacturer instructions.

For more information on manual configuration of file sharing you can also go to the support section of www.2wire.com and type in "file sharing guide."

Domain Name

This service allows you and other specified remote users to type a simple WEB URL name to reach your gateway and your home network (e.g. <http://myname.accessmyhome.net>).

Refer to the Domain Name section of the **Remote Access** page. Start by clicking the box that reads "ENABLE" next to **Remote Access**. If you would like there to be a shared folder that can be accessed via Remote Access, click the checkbox next to "Access Shared Files."

In order to set up a Domain Name to access your home network with, you will need to enter a password where it asks for one.

You also have the option of enabling Enhanced login protection which will suspend your remote access temporarily if there are a certain number of failed or unsuccessful login attempts.

To configure the Domain Name Remote Access, click "Edit Domain Name." You will then be taken to the 2wire privacy policy which you must agree to in order to configure the Domain Name feature.

A page will appear that will allow you to choose your custom domain name.



Domain Name

To access your information from a remote location more easily, you will choose a unique domain name for your home network. This domain name is what identifies your home network to the Internet and is dynamically updated if your Internet address changes.

Once you have chosen a domain name, you will be able to change it in the future by accessing your remote access settings. However, you can only maintain one remote access domain name at a time.

Your domain name will be in the format of "myname.accessmyhome.net." where "myname" is your unique personal selection. This prefix can be at most 63 characters in length and cannot be in use by another remote access customer.

Once you choose your domain name, it will typically become active within a few minutes, but the process may take up to 24 hours to complete.

Change Domain Name: .accessmyhome.net
 I do not want a domain name.

Click **SAVE** to continue.

After choosing your custom domain name, all you will have to do to access your home network and shared files is type the custom domain name you have selected into a web browser, and you will be taken to the login page.

For further information on Remote Access and how to remotely manage your network please refer to www.sasktel.com/support/internet/other/homenet/

Your Gateway

We hope this User Guide allows you to start exploring the possibilities of the enhanced home networking experience that your HomeNet Gateway offers. With the HomeNet Gateway you are safe and secure whether on the Internet, sharing files or accessing the network from anywhere where there is a computer with a web browser. And this is only the beginning – the HomeNet Gateway will support many of the exciting new technologies that we expect to offer in the near future.

For further details on your HomeNet Gateway and its services please refer to www.sasktel.com/support/internet/other/homenet/.

Personal Reference Page

Use this page to write down important information for future reference. Keep it in a safe place. If you need to re-enter this information, remember that it should be typed in lower-case letters.

Date Service Activated:

Your local dial up access number: **13069957000**

Dial-Up User ID:

Dial-Up Password:

E-mail User ID:

E-mail Password:

E-mail Address (@sasktel.net):

E-mail User ID:

E-mail Password:

E-mail Address (@sasktel.net):

E-mail User ID:

E-mail Password:

E-mail Address (@sasktel.net):

E-mail User ID:

E-mail Password:

E-mail Address (@sasktel.net):

Outgoing mail (SMTP) server: **smtp.sasktel.net**

Incoming mail (POP) server: **mail.sasktel.net**

News (NNTP) server: **news.sasktel.net**

IP Address:

Gateway Wireless Encryption Key (WEP):

Wireless Network Number:

Subnet Mask:

Domain Name: **sasktel.net**

Appendix 1 – About E-mail

With sasktel.net e-mail you may select between SaskTel's web based e-mail (webmail) and/or PC based e-mail (e-mail programs such as Outlook Express). Each e-mail option has unique characteristics to meet the needs of different users.

SaskTel recommends you setup an e-mail program on your primary computer to:

- download your e-mail,
- help manage your e-mail storage capacity, and to
- use webmail when you need to access e-mail away from your primary computer.

The following material outlines the unique differences between the two e-mail options available with your sasktel.net service:

PC based e-mail (e-mail programs)

You can access your e-mail using a software program, which is included with some browsers (ex: Microsoft Outlook Express). These e-mail software packages are configured specifically for your computer (settings for individual browser programs are available at <http://www.sasktel.com/support/internet/email/sasktelnet/emailsetup.html>).

Benefits of using an e-mail program

- Downloads messages from SaskTel server onto personal hard drive.
- Frees up space on the server so you never exceed your personal mail capacity.
- Don't need to be on the Internet to view downloaded email.

Web based e-mail (webmail)

Webmail allows you to access your e-mail account on a Web page, using your Internet browser. This means you can read, send, and organize your e-mail on any electronic device with the capability of connecting to the Internet, anywhere in the world. Webmail is particular useful for those individuals who travel, use a

laptop, etc. or often need to access the Internet in places other than a permanent location.

E-mail is stored on an e-mail server waiting for you to open it, and, unlike PC based e-mail, will remain on the e-mail server even after you view it (unless you delete the e-mail).

Benefits of using webmail

- Don't need to download email to hard drive.
- You can access and view your email from any location that has a computer with an Internet connection and a browser.

Access your webmail at <https://www.sasktel.net/messenger/framePage.html>.

