

Zebra G-Series™ Product Guide



Zebra Technologies International, LLC
333 Corporate Woods Parkway
Vernon Hills, IL-60061-3109, USA
Tel. +1 847 634 6700
Fax. +1 847 913 8766
www.zebra.com

This document and the information contained therein is the confidential and proprietary information of Zebra, and may not be distributed without the express written permission of Zebra.

ZebraLink and all product names and numbers are trademarks. Zebra, the Zebra Head logo, ZPL, ZPL II, Stripe, Z Series are registered trademarks of ZIH Corp. All rights reserved worldwide.

Product and company names mentioned in this document may be trademarks of their respective owners.

All competitor product information is gathered from public sources at the time of publication.

This document was compiled from information available at the time of publication and is issued only as an information source. No warranty as to accuracy or completeness is expressed or implied. This document is subject to change without notice.

Table of Contents

I.	<u>Introduction</u> Product Positioning Features and Benefits of the G-Series	Page 4
II.	<u>Target Markets and Applications</u> Logistics and Supply Chain Management Healthcare Retail	Page 9
III.	<u>Product Differentiation</u> Benefits of Upgrading Features Mapping – G-Series vs. 28-Series	Page13
IV.	<u>Competitive Analysis</u> Major competitors G-series advantage Throughput testing GK420d vs. Intermec PF8d GX420d vs. Intermec PF8d GK420t vs. Intermec PF8t GX420t vs. Intermec PF8t GX430t vs. Intermec PF8t (300 dpi) GK420d vs. TSC- TDP245 plus GX420t vs. TSC –TTP245 Plus GX430t vs. TSC- TTP343 plus GK420d vs. Datamax Ex2 GX420d vs. Toshiba Tec B-SV4D GX420t vs. Toshiba TEC B-SV4T GX420t vs. Cognitive Advantage DLX DBT42 GX430t vs. Cognitive Advantage DLX DBT42 GX420d vs. Samsung SRP-770ii	Page15
V.	<u>Preventive Maintenance</u>	Page 35
VI.	<u>Zebra supplies for G-series</u>	Page 36
VII.	<u>G-series price list</u>	Page 38
VIII.	<u>G-Series Technical Specification</u> GK420d and GK420t GX420d, GX420t and GX430t	Page 43
IX.	<u>G-Series Spare Parts Listing</u> GK420d GK420t GX420d GX420t GX430t	Page 51
X.	<u>Questions and Answers</u>	Page 56

I. Introduction

“Always a perfect fit,” the new Zebra G-Series, available in several models and sizes, and offering a wide array of innovative features and connectivity options, brings a whole new level of speed, performance, and ease of use to the desktop printer marketplace. The printers are available in both direct thermal and a combination of direct thermal/thermal transfer versions.

The Zebra G-Series represents a sophisticated new generation of desktop printing solutions. Its compact design, ease of use and deep functionality—as well as options that include wireless connectivity—entailed intensive research, development and testing. The resulting new product line reflects Zebra’s long-held philosophy of listening closely to the needs and concerns of end users, and developing flexible, affordable solutions that meet their current and emerging application requirements.

Highest Speed, Best-in-Class Performance, All in a Compact Footprint

Compared to competitive thermal desktop printers in the marketplace, the Zebra G-Series offers superior speed and performance for higher throughput, greater ease of use, as well as more connectivity options and configuration possibilities for optimal flexibility. From the feature-rich GX models to the more basic GK models, the compact printers are designed to support applications across a wide range of industries and operating environments.

Best-in-class attributes of the Zebra G-Series include:

- ***Sleek, compact design*** of the G-Series direct thermal printer offers the smallest footprint in the industry today, saving much needed space in crowded desktop environments.
- ***Ease of use*** provides faster media loading for increased speed to production, with no training required. The direct thermal/thermal transfer version offers the easiest and fastest ribbon loading system available.
- ***High memory capacity***. Firmware, forms, fonts and graphics are permanently stored in the printer. Flash memory provides faster processing, and increased SDRAM enables longer formats to accommodate more demanding applications.
- ***Rugged, high quality construction*** provides greater durability and reliability than most desktop printers.

- ***Co-resident native ZPL and EPL programming languages*** accommodate fit into existing or legacy environments with equal ease.
- ***Wide range of connectivity options*** include 802.11b/g and Bluetooth wireless and 10/100 Ethernet for easy network integration of GX printers. LCD display, standard with wireless options, clearly communicates prompts and status.
- ***Remote printer management***, via ZebraNet Bridge Enterprise software, allows viewing and control of worldwide printer networks from a single location.

In addition, Zebra offers a host of options to customize G-Series printers to meet the widest possible range of industry and application requirements. The printers are ideal for printing labels, receipts, price marking tags, shipping and return labels, boarding passes, ID wristbands and tags, admission tickets, and much more. Industry applications include, but are not limited to, parcel/postal, general and retail pharmacy, healthcare, manufacturing, security, transportation, recreation and entertainment.

Product Positioning

G Series Positioning:

The new G Series Thermal Printers are best in class, offering increased **speed** and **performance** for desktop printers. From the **feature-rich GX** models to the **basic GK** models, these **compact** printers support a variety of applications and environments. Standard with both EPL and ZPL programming languages, the G Series is **simple to integrate and manage**. Choose from direct thermal – offering the **smallest footprint** in a desktop thermal printer, or combo direct thermal/thermal transfer print technology with the **easiest ribbon-loading** system around! Built with **ease-of-use** and **durability** in mind, Zebra's G Series is the **reliable** desktop printing solution that's always a perfect fit.

GK Model Positioning:

The Zebra GK model is your best **value** in a **basic** desktop thermal printer. The GK's **enhanced performance** delivers standard print speeds of up to 5 ips and **fast** first label out. Choose from direct thermal – offering the **smallest foot print** in a desktop thermal printer, or combo direct thermal/thermal transfer print technology with the **easiest ribbon loading** system around! Both EPL and ZPL programming languages ship standard on the GK model. Built with **ease-of-use** and **durability** in mind, Zebra's GK model is the **reliable** desktop printing solution that's always a perfect fit.

GX Model Positioning:

The Zebra GX model is **best in class** with the **widest range of features** in a desktop thermal printer. GX's enhanced performance delivers standard print speeds of up to 6 ips and **faster** first label out. With both EPL and ZPL pre-installed, the GX offers a wider choice of connectivity options - including wired and wireless - ensuring **easy system integration**. To meet a variety of applications and environments, GX models offer features such as moveable sensor, 300 dpi, and cutter. Choose from direct thermal – offering the **smallest foot print** in a desktop thermal printer, or combo direct thermal/thermal transfer print technology with the **easiest ribbon loading** system around. Built with **ease-of-use** and **durability** in mind, Zebra's GX model is the **reliable** desktop printing solution that's always a perfect fit.

Features and Benefits of the G-series

<i>Feature</i>	<i>Function</i>	<i>Benefit/Advantage</i>
Ease of Use		
Easiest ribbon loading	Ribbon loading is easier than all other competitors, and easier than previous Zebra desktop printers.	Down time is reduced and productivity is increased by the time saved loading ribbon, and the reduction in training and support time.
OpenAccess™ design	Loading of media is greatly simplified with Zebra's OpenAccess design. By building the printhead into the top lid, access to the media compartment is maximized.	Label rolls are easily and quickly loaded, requiring little to no training and support. By minimizing downtime, productivity is increased.
Color-coded intuitive guides	Moveable parts and access points are color coded, including FEED key, latches and label guides.	Operation of printer is simplified as well as media loading. Productivity is increased by reduced training and support requirements.
Compact size	The direct thermal models have the smallest foot print in a desktop printer. The direct thermal/thermal transfer models are smaller than many competitors.	These small printers are easy to transport and install. The compact foot print is ideal for congested work spaces.
Easy to Own (Integrate/Manage/Service)		
Connectivity	A wide range of connectivity interfaces are available as standard or optional. GK – USB & Serial standard; 10/100 optional GX – USB, Serial, Parallel standard; 10/100, 802.11g and Bluetooth wireless optional	Easy integration into existing local or networked systems using customer's choice of connectivity. - 802.11b/g reduces hard wire costs and eases installation and equipment moves. - Bluetooth eliminates cables in short range communications installations.
System integration	Both ZPL and EPL programming languages are native on the GX and GK models.	Fits into legacy EPL environments or the powerful ZPL language used by Zebra tabletop printers.
Printer Management	Remote printer management is made easy with ZebraNet Bridge Enterprise software.	Administrators can view and control worldwide networks from a single location.
Host Status Reporting	When using ZPL the new host status reporting feature reports conditions such as printer errors, open cover, media out, and maintenance required	This feature keeps printer up and running at optimal performance, extends printer life, increasing productivity and ROI.
Durable construction	Reliability is built into this sleek, dark grey design with robust dual-wall frame, resistant enclosures, and sturdy reinforced plastic.	Printers have a more solid, durable feel than the competition. Interior design protects mechanisms from dust, dirt and damage. Repairs and cost of ownership is reduced by the quality construction.
Compact size	Small but durable design. The direct thermal models have the smallest foot print in a 4" desktop printer. The direct thermal/thermal transfer models are smaller than many competitors.	These small printers are easy to transport and install. The compact foot print is ideal for congested work spaces.
Ease of service	Print head and platen are easy to replace and require no tools.	This means the printer can easily be serviced in the field. Down time is reduced and productivity is increased.
Performance		
Superior speed & throughput	Faster printing and throughput are achieved with up to 5 ips on the GK, and best in class 6 ips on the GX. Increased throughput on the G-Series is supported by the 32-bit processor.	Faster first label out increases productivity. Print speed can be selected to best suit application requirements for print quality, media handling and throughput.
Memory	4MB Flash (1.5MB available to user) and 8MB SDRAM is standard on both models. GX model can be upgraded to a total of 12MB.	Firmware, forms, fonts and graphics are permanently stored in the printer Flash memory for faster processing. Increased SDRAM enables longer label formats, and meets more demanding applications.

Value Performance – GK models		
Value per price	Low priced Zebra 4” desktop printer offers Zebra quality and reliability.	Durable printer offers performance at a low cost.
Basic options	Options on the GK model include: thermal transfer or direct thermal/thermal transfer; EPL and ZPL; internal 10/100 Ethernet; peeler.	This basic printer offers Zebra durability and reliability at a low cost.
Premium Feature Rich – GX models		
Optional Features	Options available on the GX models include cutter, liner free, peeler, additional memory, 802.11 b/g, Bluetooth, 300 dpi, moveable sensor	Many options available to customize the printer to meet application requirements.
Print Resolution	High quality 203 dots per inch (dpi) print resolution is standard. The GX model is upgradeable to high density 300 dpi.	High quality print resolution means better scan rates. 300 dpi resolution is ideal for complex graphics and barcodes.
Moveable Sensor	Optional on the GX model is an adjustable full width black line and multi-position gap sensor.	Not being limited to center or slightly off center sensing means more types of media can be used, increasing the range of applications.
LCD control panel	LCD is included with the 802.11 b/g and Bluetooth feature upgrades. The LCD provides immediate access to view or change common settings of wireless parameters, or provide printer status.	Reduces the need for a PC to view and control various printer functions. Status review or updates can be accomplished quickly by the user or administrator.

II. Target Markets and Applications

Industry	Applications
Post /Parcel	Postal stamps, labels, receipts
Retail	Price marking, returns, coupons, receipts, gift registry, specialty printing
Retail Pharmaceutical	Prescription labeling, script doc tracking, safety labels
Healthcare	Specimen labeling, patient ID (wristband), lab work orders, document tracking
Light Industrial/Manufacturing	Product labeling, agency labels, quality tracking, shipping labels, WIP applications
Security	Visitor/guest identification, evidence tracking, parking passes
Other	Boarding passes, bag tags, asset tagging, document tracking, boarding passes, ski lift ticket

Light Industrial/Manufacturing

Area	Application
Parcel Delivery	Shipping/receiving labeling
Postal delivery	Tracking
Public Transportation	Ticketing
	Receipt Printing

**Application Focus**

New challenges and opportunities are emerging as aggressive new service providers enter the global parcel and post industry, which was once dominated by national postal authorities. Competition is forcing all participants to maximize efficiency, offer new services, and find new sources of revenue in their markets.

The physical aspects of mail pickup and delivery have changed little in more than 100 years. The mark of a modern, efficient delivery organization is the amount of information it can capture and provide its customers. [Bar code](#) and [RFID](#) printing systems are the tools parcel and post providers need to compete, helping create and provide information any time, anywhere. Zebra solutions help parcel and post operators reduce operating expenses and create new revenue-producing services.

GK420/ Advantage

- ✓ ZBI decodes legacy software
- ✓ High throughput - new ZPL architecture
- ✓ Small footprint printer takes up little space in crowded shipping area, can be shelf-mounted above shipping desk
- ✓ Durable - ideal for rough shipping docks



Healthcare

Area	Application
Hospitals and Clinics	Blood bag labels
Outpatient and day surgery centers	Specimen labeling and tracking
Laboratories	Pharmaceutical labels
Pharmacies	Prescriptions
Back Office	Specimen labeling
	Document management



Application Focus

Patient information management: Hospitals and other healthcare facilities can use the G-Series to manage a variety of data labeling and tracking requirements. G-Series printers are ideal for nurses' stations, clinics and laboratories to fulfill barcode labeling needs such as for vial tubes and specimens, and pharmacy labels.

The G-series brings a number of critical benefits to the healthcare industry, notably the ability to be networked (via the internal ZebraNet PrintServer II) and remote administered using ZebraLink. Additionally, the compact size and footprint is vital as space is limited in hospital and lab environments. Desktop printers offer the cost effective 'multiple printers, multiple locations' advantage, meaning that they can be placed in many different areas of a hospital, exactly at the point of use.

GK420 Advantage

- ✓ Ethernet connectivity with internal ZebraNet PrintServer II allows integration with the hospital network.
- ✓ ZebraLink remote management allows printers to be controlled and monitored from a central location – not necessarily onsite.
- ✓ Compact footprint is vital for saving space in cramped areas such as nurses' stations and admissions desks.
- ✓ Desktop printer offers value for money and the right print volume to printer size ratio – a mid-range would be too big and a waste of space. Can be placed in many locations throughout the hospital.
- ✓ Easy to load and use means that very little printer training is required of medical personnel
- ✓ Very low maintenance requirements.

Retail

Area	Application
Stores & Outlets	Coupon Printing
Superstores	Item/Price Marking
Suppliers	Shelf Labeling
Grocery	UPC/EAN Labeling
Warehouse	Shipping/Receiving
Food Service	Inventory and Asset Management



Customer Service Area: Large stores with high returns turnover can benefit from customer service area. As returned merchandise is processed, the items will either be repackaged & relabeled for resale or sent back to the manufacturer where applicable. To print the labels for these operations, the store can install LP G-series printers with ZebraNet PrintServer II internal Ethernet option and they are networked into the store system. The benefits of ZebraLink include remote printer administration, which enables the printers to be managed from one central location, not necessarily onsite. This reduces training and support requirements and the costs.

Using ZebraLink, a remote administrator can upload updated formats or firmware to the printers, check the printer status and have alerts sent to a pager, cell phone or email. Additionally, when the return desk volume is high, such as after the holidays, the G-series superior throughput and speed can save time and boost efficiency. The compact sized printers take up little space in the often-crowded customer service area and the OpenACCESS design makes loading media a simple task.

GK420 Advantages:

- ✓ Easy to load and use means that very little printer training is required of store personnel.
- ✓ Very low maintenance requirements.
- ✓ Network connectivity with internal wireless 802.11g facilitates integration to the store system.
- ✓ ZebraLink remote management allows printers to be controlled and monitored from a central location – not necessarily onsite
- ✓ Compact footprint vital for saving space in busy returns area
- ✓ Desktop printer offers value for money and the right print volume to printer size ratio – a mid-range would be too big and a waste of space.

III. Product Differentiation

Benefits of Upgrading

Upgrade to Greater Productivity

Increase productivity by upgrading your older 4-inch printer, Zebra legacy printer, 4-inch 2844, 2844-Z, 3842, 3844-Z printer to the new 4-inch Zebra G-Series GK or GX desktop printer. G-Series printers are easier to integrate with your network and other Zebra printers, deliver increased speed and performance, and offer more flexibility to meet a greater variety of applications. Built with Zebra durability and reliability, the sleek, grey G-Series printers are:

Easier to integrate with your environment

- G-Series printers include both EPL™ and ZPL® programming languages so they work seamlessly with existing or future desktop, mobile, industrial/commercial and high-performance Zebra printers.
- With more wired and wireless connectivity options, including 10/100 Ethernet, Bluetooth and 802.11b/g, G-Series printers easily integrate into existing personal, local or networked systems.
- The compact G-Series printers – especially the direct thermal GK420d™ and GX420d™, which have the smallest footprint of any 4-inch desktop printer – fit neatly into space-constrained work areas.


More productive

- With faster print speed (up to 6 inches per second), and a 32-bit processor for faster label throughput, the G-Series increases your operation's printing productivity.
- Users save time with the easy-to-use design. The ribbon-loading system of the thermal transfer version is the easiest method on the market, while the G-Series' OpenACCESS design speeds media loading.
- Fast and simple printhead and platen replacement reduces printer maintenance downtime.
- With built-in Unicode™ support through Zebra's Global Printing Solution, G-Series printers can print multiple languages, even on the same label.

More flexible

- From the basic GK model to the feature-rich GX model, G-Series printers offer a wide range of options to transform any desktop printing application.
- Optional adjustable media sensors, dispenser and cutter increase your media handling choices.
- Optional sharp, 300-dpi print resolution ensures that 2-D bar codes, fine text and complex graphics are sure to scan and easy to read. The GX430t provides this option.

Features Mapping – G-Series vs. 2800/3800 Series



Compare Your 2844, 2844-Z, 3842 or 3844-Z Printer with the Advantages of the G-Series

	LP/TLP 2844	LP/TLP 2844-Z	TLP 3842	TLP 3844-Z	GK420d/t	GX420d/t	GX430t
Print Speed							
2 inches (51 mm) per second (ips)			•				
4 ips (102 mm)	•	•		•			•
5 ips (127 mm)					•		
6 ips (152 mm)						•	
Resolution							
203-dpi (8 dots/mm) Resolution	•	•			•	•	
300-dpi (12 dots/mm) Resolution			•	•			•
Programming Language							
EPL (Eltron Programming Language)	•		•				
ZPL (Zebra Programming Language)		•		•			
EPL & ZPL Co-resident					•	•	•
Processor							
Single 16-bit Processors	•		•				
32-bit RISC Processors		•		•	•	•	•
Connectivity							
Serial, USB, and Parallel	•	•	•	•		•	•
Serial and USB					•		
10Base-T Ethernet (Optional)	•	•	•	•			
10/100 Ethernet (Optional)					•	•	•
802.11b/g Wireless with LCD display (Optional)						•	•
Bluetooth Wireless with LCD display (Optional)						•	•
Memory							
512 KB Flash; 256 KB SRAM (Standard)	•						
1 MB Flash; 512 KB SRAM (Optional)	•						
1 MB Flash; 512 KB SRAM (Standard)			•				
1.2 MB SRAM (Optional)			•				
4 MB Flash; 8 MB SDRAM (Standard)		•		•	•	•	•
8 MB Flash w/ RTC (12 MB total) (Optional)		•		•		•	•
Maximum Print Length							
Print Length—11"/279 mm (std memory)	•		•				
Print Length—39"/991 mm (std memory)		•		•	•	•	•
Media Sensing							
Reflective/Transmissive	•	•	•	•	•	•	•
Adjustable Black Line (Optional)						•	•

IV. Competitive Analysis*

Major US based Competitors:

Intermec: Headquartered in Everett, Washington a suburb of Seattle and with over 40 years in business, Intermec provides bar code, RFID, and mobile printers. Products are manufactured in China, and some are OEM products from Godex.

<http://www.godex.com.tw/Eng/index.asp>

Web-Site: <http://www.intermec.com>

Datamax: A subsidiary of **Dover Corporation** is located in Orlando, Florida with 31 years in the business. Product lines include entry-level, midrange, and high-performance barcode printers. Dover acquired **O'Neil** adding mobile printers to the product line.

Web-Site: <http://www.datamaxcorp.com/>

Cognitive: Established in 1986, Cognitive Solutions is headquartered in Colorado. Cognitive Solutions supplies thermal printers, software, and supplies used to create barcode labels. It is a part of ATSI Holding Company that includes TPG (Transaction Printer Group) printers for banking and retail. ATSI Holdings has emerged from bankruptcy in 2000 by closing down manufacturing in US. Cognitive products are designed in US with production in China and Mexico (subcontractors).

Web-Site: <http://www.cognitive.com>

Asian based Competitors

Sato: Headquartered in Tokyo, Japan, SATO Corporation was founded in 1940. Their product offering ranges from desktop to industrial barcode printers. Sato has sales offices and branches all over the world. Sato products are manufactured in Malaysia, Vietnam, and UK.

Web-Site: <http://www.satoworldwide.com>

TSC: TSC Auto ID Technology Co., Ltd. (TSC Auto ID) was established in August 1, 2007 in Taiwan, and formally Thermal Printer Division of Taiwan Semiconductor Co., Ltd the parent company. Over past decades, bar code printers were built and designed for sale under the TSC brand name as well as for the well-known bar code printer companies such as Toshiba. The products are manufactured in Taiwan and China.

Web-Site: <http://www.tscprinters.com>

Toshiba Tec: Headquartered in Ohsaki, Japan and established in 1950, Toshiba Tec has manufacturing locations in China, Malaysia, US, and France. With the main sales office located in Atlanta, Georgia. Retail is a focused market in US, Mexico and Canada. The thermal transfer printer is an OEM by TSC.

Web-Site: <http://www.toshibatec.co.jp>

* The competitive information was extracted from on-line information posted on company's web-site and other sources including publicly available financial reports.

G-Series Advantages:

G-Series Advantage	Intermec PF8d/t	Cognitive DLX	Datamax Ex2	Tec B-SV4D/T	Sato CX400/410	TSC TDP/TTP245/TTP343 Plus
						
Smallest footprint in (d) models	PF8d is 2% bigger	14% bigger	40% bigger	29% bigger	30% bigger	TDP245 is 44% bigger
Max. speed (6 ips GX models)	4 ips	5 ips	4 ips	5 ips	4 ips	5 ips
Internal Ethernet	No	Yes	Yes	Only on T models	No	Yes
Internal Wireless With LCD display GX models	No	No	No	No	No	No
Unicode	No	No	No	No	No	No
Odometer	No	No	No	No	No	No
Connectivity Triple Interface GX models	Yes	Only USB is standard	Yes	Yes	No	Yes
ZPL & EPL	No	Yes	No	No	No	Yes

Throughput testing

The following pages were compiled from the latest manufacturer's product information as of the date of this document. In cases where conflicting product specification or functionality information was discovered between a given manufacturer's printed or on-line material, the manufacturer was contacted directly for clarification.

Products were acquired for purposes of hands-on competitive analysis performed by engineering and product management teams.

Performance testing was performed as follows:

Test Station

All products were tested from the same PC.

- Dell Laptop Latitude D630, 2 GB RAM and equipped with Microsoft Windows XP.
- All USB interface test-runs were performed using the same high-quality shielded USB cable.

Test Labels:

All labels were created by hand-coding two real-world label formats with barcodes using the manufacturer's specific label programming language. These were produced as identically as possible across manufacturers. This procedure isolated the performance characteristics of each tested unit to that of the device's controller electronics and motion dynamics; i.e., no driver overhead or variability.

- AIAG compliance label
- K-Mart compliance label
- For multi-label test runs, 50 unique sets of numeric data was modified in the label program, terminated with a memory-flush statement in each, and concatenated into one file.

Methodology:

- The PC was booted in Windows mode for each test-run.
- Label formats were sent to the printer using Zebra's proprietary Splat software utility, version .06.

Timing:

- Timing was performed commencing the test from actuation of the software's "Run Test" button to start the download, and concluding at the point in time when the trailing-edge of each label (in the case of first-label-out tests), or when the last of 50 labels (in the case of multi-label tests), ceased forward movement.
- Three (3) test-runs were performed for each of the two label designs for both single and multi-label combinations, for a total of 12 independent tests for each product. (3 runs x 2 label types x 1 I/Fs x 2 label volumes.) An average time for each three-run test was then calculated for every combination. Sportline model 228 timing device was used to monitor each event.

Test Results:

The following charts (Figures 1 & 2) show performance timing results (in seconds) for the G-series USB port communications were used in obtaining these timings.

Figure 1: First label out - Kmart and AIAG (All printers)

Throughput Testing via USB @ 5 ips		
Printer	First Label Out Kmart Label (Secs)	First Label Out AIAG Label (Secs)
GK420d 5ips EPL	2.43	2.32
GK420d 5ips ZPL	2.20	2.17
GX420d 6ips EPL	2.12	2.07
GX420d 6ips ZPL	1.87	1.90
GX430 4ips EPL	2.78	2.66
GX430 4ips ZPL	2.63	2.53

Figure 2: 50 labels out - Kmart and AIAG (All printers)

Throughput Testing via USB @ 5 ips		
Printer	50 Unique Kmart Labels (Secs)	50 Unique AIAG Labels (Secs)
GK420d 5ips EPL	63.12	63.03
GK420d 5ips ZPL	62.34	62.81
GX420d 6ips EPL	54.19	53.35
GX420d 6ips ZPL	53.05	53.22
GX430 4ips EPL	78.50	78.94
GX430 4ips ZPL	78.41	78.44

Intermec PF8t data:**Figure 3: First label out - Kmart and AIAG labels (GK420t and Intermec)**

Throughput Testing via USB Port		
Printer	First Label Out Kmart Label	First Label Out AIAG Label
Zebra GK420t (5 ips, max speed. EPL)	2.43	2.32
Intermec PF8t (4 ips, max speed. EPL)	2.98	2.94

Measured in seconds, for completion of one label.

Figure 4: 50 labels out - Kmart and AIAG labels (GK420t and Intermec)

Throughput Testing via USB Port		
Printer	50 Unique Kmart Labels	50 Unique AIAG Labels
Zebra GK420t (5 ips, max speed. EPL)	63.12	63.03
Intermec PF8t (4 ips, max speed. EPL)	109.66	109.53

Measured in seconds, for completion of 50 labels of unique variable content.

Zebra GK420d vs. Intermec PF8d

Price & Warranty	Zebra	Intermec
Model #	<i>GK420d</i>	<i>PF8d</i>
Retail Price:	\$595	\$495
Printer Warranty:	1 year	1 year
Print Features		
Printer Type:	Direct	Direct
Max. Print Speed:	5 ips (127 mm/sec)	4 ips (102 mm/sec)
Printhead Resolution:	203	203
Flash:	4 MB	4 MB
SRAM:	8 MB	8 MB
Firmware	EPL & ZPL	Esim & EPL
Physical Features		
Footprint (D x W x H):	8.25"X6.75X6.0" (210X171X152 mm)	8.58"X6.61"X4.56" (218X168X116mm)
Weight:	3.0 lbs	4.41 lbs
Imaging Features		
Rotated (0°, 90°, 180°, 270°):	Yes	Yes
# of Resident Fonts:	5 for EPL & 17 for ZPL	5
Expandable Vertically & Horizontally:	Yes	Yes
Unicode compliant:	Yes	No
Media Features		
Maximum Media Width:	4.25" (108 mm)	4.65" (118 mm)
Minimum Media Width:	0.75" (19 mm)	1.0" (25.4 mm)
Maximum Label Length:	39.0" (990 mm)	68" (1,727 mm)
Minimum Label Length:	0.38" (9.7 mm)	0.5" (12 mm)
Thickness:	0.003" - 0.0078" (0.08mm - 0.20 mm)	Not published
Maximum OD (Outside Diameter):	5.00" (127mm)	5.00" (127mm)
Minimum ID (Inner Diameter):	0.5" (12.7mm)	1.0" (25.4 mm)
Black Line sensor:	Yes	No
Connectivity		
Centronics Parallel:	No	Yes
RS-232 :	Yes	Yes
USB:	Yes	Yes
Options & Accessories		
Expandable Memory:	No	No
Label Taken Sensor:	Option	Standard
Cutter:	N/A	Yes
Font Packs	Option	Not published
Real Time Clock:	No	No
Keyboard Display Unit:	Yes	No
Network Connectivity(Internal):	Yes	No
Wireless:	No	No

Zebra GX420d vs. Intermec PF8d

Price & Warranty	Zebra	Intermec
Model #	<i>GX420d</i>	<i>PF8d</i>
Retail Price:	\$695	\$495
Printer Warranty:	1 year	1 year
Print Features		
Printer Type:	Direct	Direct
Max. Print Speed:	6 ips (152 mm/sec)	4 ips (102 mm/sec)
Printhead Resolution:	203	203
Flash:	4 MB	4 MB
SRAM:	8 MB	8 MB
Firmware	EPL & ZPL	Esim & EPL
Physical Features		
Footprint (D x W x H):	8.25"X6.75X6.0" (210X171X152 mm)	8.58"X6.61"X4.56" (218X168X116mm)
Weight:	3.0 lbs	4.41 lbs
Imaging Features		
Rotated (0°, 90°, 180°, 270°):	Yes	Yes
# of Resident Fonts:	5 for EPL & 17 for ZPL	5
Expandable Vertically & Horizontally:	Yes	Yes
Unicode compliant:	Yes	No
Media Features		
Maximum Media Width:	4.25" (108 mm)	4.65" (118 mm)
Minimum Media Width:	0.75" (19 mm)	1.0" (25.4 mm)
Maximum Label Length:	39.0" (990 mm)	68.0" (1,727 mm)
Minimum Label Length:	0.38" (9.7 mm)	0.5" (12 mm)
Thickness:	0.003" - 0.0078" (0.08mm - 0.20 mm)	Not published
Maximum OD (Outside Diameter):	5.00" (127mm)	5.00" (127mm)
Minimum ID (Inner Diameter):	0.5" (12.7mm)	1.0" (25.4 mm)
Black Line sensor:	Yes	No
Connectivity		
Centronics Parallel:	Yes	Yes
RS-232 C:	Yes	Yes
USB:	Yes	Yes
Options & Accessories		
Expandable Memory:	Additional 8 MB Flash	No
Label Taken Sensor:	Option	Standard
Cutter:	Yes	Yes
Font Packs	Option	Not published
Real Time Clock:	Yes	No
Keyboard Display Unit:	Yes	No
Network Connectivity(Internal):	Yes	Yes
Wireless:	Bluetooth and 801.11 b/g	No

Zebra GK420t vs. Intermec PF8t

Price & Warranty		Zebra	Intermec
Model #		GK420t	PF8t
Retail Price:		\$695	\$595
Printer Warranty:		1 year	1 year
Print Features			
Printer Type:		Thermal Transfer	Thermal Transfer
Max. Print Speed:		5 ips (127 mm/sec)	4 ips (102 mm/sec)
Printhead Resolution:		203	203
Flash:		4 MB	4 MB
SRAM:		8 MB	8 MB
Firmware		EPL & ZPL	Esim & EPL
Physical Features			
Footprint (D x W x H):		10.0X7.6X7.5" (254X193X191 mm)	11.2X8.9X6.77" (285X226X172mm)
Weight:		4.6 lbs (2.1 kg)	5.07 lbs (2.5 kg)
Imaging Features			
Rotated (0°, 90°, 180°, 270°):		Yes	Yes
# of Resident Fonts:		5 for EPL & 17 for ZPL	5
Expandable Vertically & Horizontally:		Yes	Yes
Unicode compliant:		Yes	No
Media Features			
Maximum Media Width:		4.25" (108 mm)	4.65" (118 mm)
Minimum Media Width:		0.75" (19 mm)	1.0" (25.4 mm)
Maximum Label Length:		39.0" (990 mm)	68" (1,727 mm)
Minimum Label Length*:		0.38" (9.7 mm)	0.5" (12 mm)
Thickness:		0.003" - 0.0078" (0.08mm - 0.20 mm)	Not published
Maximum OD (Outside Diameter):		5.00" (127mm)	5.00" (127mm)
Minimum ID (Inner Diameter):		0.5" (12.7mm)	1.0" (25.4 mm)
Ribbon Length:		244' (74 m) using 0.000328" ribbon thickness	900' (274 m)
Black Line sensor:		Yes	Yes
Connectivity			
Centronics Parallel:		No	Yes
RS-232 C:		Yes	Yes
USB:		Yes	Yes
Options & Accessories			
Expandable Memory:		No	1GB
Label Taken Sensor:		Option	Standard
Cutter:		N/A	Yes
Font Packs		Option	Not published
Real Time Clock:		No	No
Keyboard Display Unit:		Yes	No
Network Connectivity(Internal):		Yes	No
Wireless:		No	No

*0.5" (12.7 mm) for direct thermal mode

Zebra GX420t vs. Intermec PF8t

Price & Warranty		Zebra	Intermec
Model #		GX420t	PF8t
Retail Price:		\$795	\$595
Printer Warranty:		1 year	1 year
Print Features			
Printer Type:		Thermal Transfer	Thermal Transfer
Max. Print Speed:		GX420t: 6 ips (152 mm/sec)	203 dpi: 4ips (102 mm/sec)
Printhead Resolution:		203 dpi	203 dpi
Flash:		4 MB	4 MB
SRAM:		8 MB	8 MB
Firmware		EPL & ZPL	Esim & EPL
Physical Features			
Footprint (D x W x H):		10.0X7.6X7.5" (254X193X191 mm)	11.2X8.9X6.77" (285X226X172mm)
Weight:		4.6 lbs (2.1 kg)	5.07 lbs (2.5 kg)
Imaging Features			
Rotated (0°, 90°, 180°, 270°):		Yes	Yes
# of Resident Fonts:		5 for EPL & 17 for ZPL	5
Expandable Vertically & Horizontally:		Yes	Yes
Unicode compliant		Yes	No
Media Features			
Maximum Media Width:		4.25" (108 mm)	4.65" (118 mm)
Minimum Media Width:		0.75" (19 mm)	1.0" (25.4 mm)
Maximum Label Length:		39.0" (990 mm)	68.0" (1,727 mm)
Minimum Label Length*:		0.38" (9.7 mm)	0.5" (12 mm)
Thickness:		0.003" - 0.0078" (0.08mm - 0.20 mm)	Not published
Maximum OD (Outside Diameter):		5.00" (127mm)	5.00" (127mm)
Minimum ID (Inner Diameter):		0.5" (12.7mm)	1.0" (25.4 mm)
Ribbon Length:		244' (74 m) using 0.000328" ribbon thickness	900'(274 m)
Black Line sensor:		Yes	Yes
Connectivity			
Centronics Parallel:		Yes	Yes
RS-232 C:		Yes	Yes
USB:		Yes	Yes
Options & Accessories			
Expandable Memory:		Additional 8 MB Flash	1GB
Label Taken Sensor:		Option	Standard
Cutter:		Yes	Yes
Font Packs :		Option	Not published
Real Time Clock:		Yes	Yes
Keyboard Display Unit:		Yes	No
Network Connectivity(Internal):		Yes	No
Wireless:		Bluetooth and 801.11 b/g	No

* 0.5" (12.7mm) in direct mode

Zebra GX430t vs. Intermec PF8t (300dpi option)

Price & Warranty		Zebra	Intermec
Model #		<i>GX430t</i>	<i>PF8t(300 dpi option)</i>
Retail Price:		\$850	\$745
Printer Warranty:		1 year	1 year
Print Features			
Printer Type:		Thermal Transfer	Thermal Transfer
Max. Print Speed:		4ips (102 mm/sec)	2 ips (51 mm/sec)
Printhead Resolution:		300 dpi	300 dpi
Flash:		4 MB	4 MB
SRAM:		8 MB	8 MB
Firmware		EPL & ZPL	Esim & EPL
Physical Features			
Footprint (D x W x H):		10.0X7.6X7.5" (254X193X191 mm)	11.2X8.9X6.77" (285X226X172mm)
Weight:		4.6 lbs (2.1 kg)	5.07 lbs (2.5 kg)
Imaging Features			
Rotated (0°, 90°, 180°, 270°):		Yes	Yes
# of Resident Fonts:		5 for EPL & 17 for ZPL	5
Expandable Vertically & Horizontally:		Yes	Yes
Unicode compliant		Yes	No
Media Features			
Maximum Media Width:		4.25" (108 mm)	4.65" (118 mm)
Minimum Media Width:		0.75" (19 mm)	1.0" (25.4 mm)
Maximum Label Length:		39.0" (990 mm)	68.0" (1,727 mm)
Minimum Label Length*:		0.38" (9.7 mm)	0.5" (12 mm)
Thickness:		0.003" - 0.0078" (0.08mm - 0.20 mm)	Not published
Maximum OD (Outside Diameter):		5.00" (127mm)	5.00" (127mm)
Minimum ID (Inner Diameter):		0.5" (12.7mm)	1.0" (25.4 mm)
Ribbon Length:		244' (74 m) using 0.000328" ribbon thickness	900' (274 m)
Black Line sensor:		Yes	Yes
Connectivity			
Centronics Parallel:		Yes	Yes
RS-232 C:		Yes	Yes
USB:		Yes	Yes
Options & Accessories			
Expandable Memory:		Additional 8 MB Flash	1GB
Label Taken Sensor:		Option	Standard
Cutter:		Yes	Yes
Font Packs :		Option	Not published
Real Time Clock:		Yes	Yes
Keyboard Display Unit:		Yes	No
Network Connectivity(Internal):		Yes	No
Wireless:		Bluetooth and 801.11 b/g	No

* 0.5" (12.7mm) in direct mode

Zebra GX420d vs. TSC- TDP245 plus

Price & Warranty	Zebra	TSC
Model #	<i>GX420d</i>	<i>TDP245 plus</i>
Retail Price:	\$695	\$445
Printer Warranty:	1 year	2 year
Print Features		
Printer Type:	Direct	Direct
Max. Print Speed:	6 ips (152 mm/sec)	5 ips (127 mm/sec)
Printhead Resolution:	203	203
Flash:	4 MB	2 MB
SRAM:	8 MB	8 MB
Firmware	EPL & ZPL	TSPL-EZ
Physical Features		
Footprint (D x W x H):	8.25X6.75X6.0" (210X171X152 mm)	9.45.X7.87X6.46" (240X200X164 mm)
Weight:	3.0 lbs	4.41 lbs
Imaging Features		
Rotated (0°, 90°, 180°, 270°):	Yes	Yes
# of Resident Fonts:	5 for EPL & 17 for ZPL	9
Expandable Vertically & Horizontally:	Yes	Yes
Unicode compliant:	Yes	No
Media Features		
Maximum Media Width:	4.25" (108 mm)	4.4" (120 mm)
Minimum Media Width:	0.75" (19 mm)	0.78" (20 mm)
Maximum Label Length:	39.0" (990 mm)	90" (2,286 mm)
Minimum Label Length:	0.38" (9.7 mm)	0.39" (10 mm)
Thickness:	0.003" - 0.0078" (0.08mm - 0.20 mm)	0.0023" – 0.0098" (0.06 mm – 0.19 mm)
Maximum OD (Outside Diameter):	5.00" (127mm)	5.00" (127 mm)
Minimum ID (Inner Diameter):	0.5" (12.7mm)	1.0" (25.4 mm)
Ribbon Length:	N/A	N/A
Black Line sensor:	Yes	Yes
Connectivity		
Centronics Parallel:	Yes	Yes
RS-232:	Yes	Yes
USB:	Yes	Yes
Options & Accessories		
Expandable Memory:	Additional 8 MB Flash	Yes
Label Taken Sensor:	Option	Option
Cutter:	Yes	Yes
Font Packs	Option	Not published
Real Time Clock:	Yes	Yes
Keyboard Display Unit:	Yes	Yes
Network Connectivity(Internal):	Yes	Yes
Wireless:	Bluetooth and 801.11 b/g	No

Zebra GX420t vs. TSC –TTP245 Plus

Price & Warranty	Zebra	TSC
Model #	<i>GX420t</i>	<i>TTP245Plus</i>
Retail Price:	\$795	\$525
Printer Warranty:	1 year	2 year
Print Features		
Printer Type:	Thermal Transfer	Thermal Transfer
Max. Print Speed:	6 ips (152 mm/sec)	5ips (127 mm/sec)
Printhead Resolution:	203 dpi	203 dpi
Flash:	4 MB	2 MB
SRAM:	8 MB	8 MB
Firmware	EPL & ZPL	TSPL-EZ
Physical Features		
Footprint (D x W x H):	10.0X7.6X7.5" (254X193X191 mm)	12.4 x 8.4" x 7.4" (314X213X188 mm)
Weight:	4.6 lbs (2.1 kg)	5.07 lbs (2.5 kg)
Imaging Features		
Rotated (0°, 90°, 180°, 270°):	Yes	Yes
# of Resident Fonts:	5 for EPL & 17 for ZPL	8
Expandable Vertically & Horizontally:	Yes	Yes
Unicode compliant	Yes	No
Media Features		
Maximum Media Width:	4.25" (108 mm)	4.4" (120 mm)
Minimum Media Width:	0.75" (19 mm)	0.78" (20 mm)
Maximum Label Length:	39.0" (990 mm)	90" (2,286 mm)
Minimum Label Length*:	0.38" (9.7 mm)	0.39; (10 mm)
Thickness:	0.003" - 0.0078" (0.08 mm - 0.20 mm)	0.0023" – 0.0098" (0.06 mm – 0.19 mm)
Maximum OD (Outside Diameter):	5.00" (127mm)	5.00" (127 mm)
Minimum ID (Inner Diameter):	0.5" (12.7mm)	1.0" (25.4 mm)
Ribbon Length:	244' (74 m)	984' (387 m)
Black Line sensor:	Yes	Yes
Connectivity		
Centronics Parallel:	Yes	Yes
RS-232 :	Yes	Yes
USB:	Yes	Yes
Options & Accessories		
Expandable Memory:	Additional 8 MB Flash	Yes
Label Taken Sensor:	Option	Option
Cutter:	Yes	Yes
Font Packs :	Option	Not published
Real Time Clock:	Yes	Yes
Keyboard Display Unit:	Yes	Yes
Network Connectivity(Internal):	Yes	Yes
Wireless(Internal):	Bluetooth or 801.11 b/g	No

* 0.5" (12.7mm) in direct mode

Zebra GX430t vs. TSC- TTP343 plus

Price & Warranty	Zebra	TSC
Model #	<i>GX430t</i>	<i>TTP343 Plus</i>
Retail Price:	\$850	\$695
Printer Warranty:	1 year	2 year
Print Features		
Printer Type:	Thermal Transfer	Thermal Transfer
Max. Print Speed:	4ips (102 mm/sec)	3ips (76 mm/sec)
Printhead Resolution:	300 dpi	300 dpi
Flash:	4 MB	2 MB
SRAM:	8 MB	8 MB
Firmware	EPL & ZPL	TSPL-EZ
Physical Features		
Footprint (D x W x H):	10.0X7.6X7.5" (254X193X191 mm)	12.4 x 8.4"x 7.4" (314X213X188 mm)
Weight:	4.6 lbs (2.1 kg)	5.07 lbs (2.5 kg)
Imaging Features		
Rotated (0°, 90°, 180°, 270°):	Yes	Yes
# of Resident Fonts:	5 for EPL & 17 for ZPL	8
Expandable Vertically & Horizontally:	Yes	Yes
Unicode compliant	Yes	No
Media Features		
Maximum Media Width:	4.25" (108 mm)	4.4" (120 mm)
Minimum Media Width:	0.75" (19 mm)	0.78" (20 mm)
Maximum Label Length:	39.0" (990 mm)	40" (1,016 mm)
Minimum Label Length*:	0.38" (9.7 mm)	0.39" (10 mm)
Thickness:	0.003" - 0.0078" (0.08mm - 0.20 mm)	0.0023" - 0.0098" (0.06 mm - 0.19 mm)
Maximum OD (Outside Diameter):	5.00" (127mm)	5.00" (127 mm)
Minimum ID (Inner Diameter):	0.5" (12.7mm)	1.0" (25.4 mm)
Ribbon Length:	244' (74 m) using 0.000328" ribbon thickness	984' (387 m)
Black Line sensor:	Yes	Yes
Connectivity		
Centronics Parallel:	Yes	Yes
RS-232 C:	Yes	Yes
USB:	Yes	Yes
Options & Accessories		
Expandable Memory:	Additional 8 MB Flash	Yes
Label Taken Sensor:	Option	Option
Cutter:	Yes	Yes
Font Packs :	Option	Not published
Real Time Clock:	Yes	Yes
Keyboard Display Unit:	Yes	Yes
Network Connectivity(Internal):	Yes	Yes
Wireless:	Bluetooth and 801.11 b/g	No

* 0.5" (12.7mm) in direct mode

Zebra GK420d vs. Datamax Ex2

Price & Warranty	Zebra	Datamax
Model #	GK420d	Ex2
Retail Price:	\$595	\$425
Printer Warranty:	1 year	1 year
Print Features		
Printer Type:	Direct	Direct
Max. Print Speed:	5 ips (127 mm/sec)	4 ips (102 mm/sec)
Printhead Resolution:	203	203
Flash:	4 MB	4 MB
SRAM:	8 MB	4 MB
Firmware	EPL & ZPL	DPL
Physical Features		
Footprint (D x W x H):	8.25"X6.75X6.0" (210X171X152 mm)	10.4" x 8.6" x 7.0" (264 x 218 x 178mm)
Weight:	3.0 lbs	4.2 lbs
Imaging Features		
Rotated (0°, 90°, 180°, 270°):	Yes	Yes
# of Resident Fonts:	5 for EPL & 17 for ZPL	10
Expandable Vertically & Horizontally:	Yes	Yes
Unicode compliant:	Yes	No
Media Features		
Maximum Media Width:	4.25" (108 mm)	4.65" (118 mm)
Minimum Media Width:	0.75" (19 mm)	1.0" (25.4 mm)
Maximum Label Length:	39.0" (990 mm)	187" (4,750 mm)
Minimum Label Length:	0.38" (9.7 mm)	0.5" (12 mm)
Thickness:	0.003" - 0.0078" (0.08mm - 0.20 mm)	0.0025" (0.0635mm)
Maximum OD (Outside Diameter):	5.00" (127mm)	5.00" (127mm)
Minimum ID (Inner Diameter):	0.5" (12.7mm)	1.0" (25.4 mm)
Black Line sensor:	Yes	Yes
Connectivity		
Centronics Parallel:	No	Yes
RS-232 :	Yes	Yes
USB:	Yes	Yes
Options & Accessories		
Expandable Memory:	No	4MB flash
Label Taken Sensor:	Option	Option
Cutter:	N/A	No
Font Packs	Option	Option
Real Time Clock:	No	No
Keyboard Display Unit:	Yes	No
Network Connectivity(Internal):	Yes	Yes
Wireless:	No	No

Zebra GX420d vs. Toshiba Tec B-SV4D

Price & Warranty	Zebra	Toshiba Tec
Model #	GX420d	B-SV4D
Retail Price:	\$695	\$795
Printer Warranty:	1 year	2 year
Print Features		
Printer Type:	Direct	Direct
Max. Print Speed:	6 ips (152 mm/sec)	5 ips (127 mm/sec)
Printhead Resolution:	203	203
Flash:	4 MB	1 MB
SRAM:	8 MB	2MB
Firmware	EPL & ZPL	EPL, ZPL, and TSPL
Physical Features		
Footprint (D x W x H):	8.25X6.75X6.0" (210X171X152 mm)	9.1" x 7.9" x 6.7" (232 x 200 x 169mm)
Weight:	3.0 lbs	4.4 lbs
Imaging Features		
Rotated (0°, 90°, 180°, 270°):	Yes	Yes
# of Resident Fonts:	5 for EPL & 17 for ZPL	7
Expandable Vertically & Horizontally:	Yes	Yes
Unicode compliant:	Yes	No
Media Features		
Maximum Media Width:	4.25" (108 mm)	4.25" (108 mm)
Minimum Media Width:	0.75" (19 mm)	0.75" (19 mm)
Maximum Label Length:	39.0" (990 mm)	24" (610mm)
Minimum Label Length:	0.38" (9.7 mm)	0.39" (10 mm)
Thickness:	0.003" - 0.0078" (0.08mm - 0.20 mm)	0.0025" – 0.010" (0.06 mm – 0. 25mm)
Maximum OD (Outside Diameter):	5.00" (127mm)	5.5" (140mm)
Minimum ID (Inner Diameter):	0.5" (12.7mm)	1.0" (25.4 mm)
Ribbon Length:	N/A	N/A
Black Line sensor:	Yes	Yes
Connectivity		
Centronics Parallel:	Yes	Yes
RS-232:	Yes	Yes
USB:	Yes	Yes
Options & Accessories		
Expandable Memory:	Additional 8 MB Flash	Yes
Label Taken Sensor:	Option	Option
Cutter:	Yes	Yes
Font Packs	Option	Not published
Real Time Clock:	Yes	Yes
Keyboard Display Unit:	Yes	Yes
Network Connectivity(Internal):	Yes	No
Wireless:	Bluetooth and 801.11 b/g	No

Zebra GX420t vs. Toshiba TEC B-SV4T

Price & Warranty		Zebra	TEC
Model #		<i>GX420t</i>	<i>B-SV4T</i>
Retail Price:		\$795	\$845
Printer Warranty:		1 year	2 year
Print Features			
Printer Type:		Thermal Transfer	Thermal Transfer
Max. Print Speed:		6 ips (152 mm/sec)	5ips (127 mm/sec)
Printhead Resolution:		203 dpi	203 dpi
Flash:		4 MB	2 MB
SRAM:		8 MB	2 MB
Firmware		EPL & ZPL	TSPL-EZ
Physical Features			
Footprint (D x W x H):		10.0X7.6X7.5" (254X193X191 mm)	12.4 x 8.4"x 7.4" (314X213X188 mm)
Weight:		4.6 lbs (2.1 kg)	5.07 lbs (2.5 kg)
Imaging Features			
Rotated (0°, 90°, 180°, 270°):		Yes	Yes
# of Resident Fonts:		5 for EPL & 17 for ZPL	8
Expandable Vertically & Horizontally:		Yes	Yes
Unicode compliant		Yes	No
Media Features			
Maximum Media Width:		4.25" (108 mm)	4.25" (108 mm)
Minimum Media Width:		0.75" (19 mm)	0.75" (19 mm)
Maximum Label Length:		39.0" (990 mm)	24" (610mm)
Minimum Label Length*:		0.38" (9.7 mm)	0.39" (10 mm)
Thickness:		0.003" - 0.0078" (0.08 mm - 0.20 mm)	0.0025" - 0.010" (0.06 mm - 0.25mm)
Maximum OD (Outside Diameter):		5.00" (127mm)	5.5" (140mm)
Minimum ID (Inner Diameter):		0.5" (12.7mm)	1.0" (25.4 mm)
Ribbon Length:		244' (74 m)	
Black Line sensor:		Yes	Yes
Connectivity			
Centronics Parallel:		Yes	Yes
RS-232 :		Yes	Yes
USB:		Yes	Yes
Options & Accessories			
Expandable Memory:		Additional 8 MB Flash	Yes 8 MB
Label Taken Sensor:		Option	Option
Cutter:		Yes	Yes
Font Packs :		Option	Not published
Real Time Clock:		Yes	Yes
Keyboard Display Unit:		Yes	Yes
Network Connectivity(Internal):		Yes	Yes
Wireless(Internal):		Bluetooth or 801.11 b/g	No

* 0.5" (12.7mm) in direct mode

Zebra GX420t vs. Cognitive Advantage DLX DBT42

Price & Warranty		
Model #	Zebra <i>GX420t</i>	Cognitive <i>DLXDBT42</i>
Retail Price:	\$795	\$795
Printer Warranty:	1 year	2 year
Print Features		
Printer Type:	Thermal Transfer	Thermal Transfer
Max. Print Speed:	6 ips (152 mm/sec)	5ips (127 mm/sec)
Printhead Resolution:	203 dpi	203 dpi
Flash:	4 MB	8MB
SRAM:	8 MB	16 MB
Firmware	EPL & ZPL	CPL/ EcPL/ ZcPL
Physical Features		
Footprint (D x W x H):	10.0X7.6X7.5" (254X193X191 mm)	9.8x6.8x 6.1" (238X173X155 mm)
Weight:	4.6 lbs (2.1 kg)	4.4 lbs (2.0kg)
Imaging Features		
Rotated (0°, 90°, 180°, 270°):	Yes	Yes
# of Resident Fonts:	5 for EPL & 17 for ZPL	11
Expandable Vertically & Horizontally:	Yes	Yes
Unicode compliant	Yes	No
Media Features		
Maximum Media Width:	4.25" (108 mm)	4.25" (108 mm)
Minimum Media Width:	0.75" (19 mm)	2.0" (51 mm)
Maximum Label Length:	39.0" (990 mm)	322" (8179 mm)
Minimum Label Length*:	0.38" (9.7 mm)	Not Published
Thickness:	0.003" - 0.0078" (0.08 mm - 0.20 mm)	Not Published
Maximum OD (Outside Diameter):	5.00" (127mm)	5.5" (140mm)
Minimum ID (Inner Diameter):	0.5" (12.7mm)	1.5" (30.1 mm)
Ribbon Length:	244' (74 m)	262' (80m)
Black Line sensor:	Yes	Yes
Connectivity		
Centronics Parallel:	Yes	Optional
RS-232 :	Yes	Optional
USB:	Yes	Yes
Options & Accessories		
Expandable Memory:	Additional 8 MB Flash	No
Label Taken Sensor:	Option	Option
Cutter:	Yes	Yes
Font Packs :	Option	Not published
Real Time Clock:	Yes	Yes
Keyboard Display Unit:	Yes	Yes
Network Connectivity(Internal):	Yes	Yes
Wireless(Internal):	Bluetooth or 801.11 b/g	No

* 0.5" (12.7mm) in direct mode

Zebra GX430t vs. Cognitive Advantage DLX DBT42

Price & Warranty		Zebra	Cognitive
Model #		GX320t	DLXDBT4-2805(300 dpi)
Retail Price:		\$850	\$845
Printer Warranty:		1 year	2 year
Print Features			
Printer Type:		Thermal Transfer	Thermal Transfer
Max. Print Speed:		4 ips (100 mm/sec)	5ips (127 mm/sec)
Printhead Resolution:		300 dpi	300 dpi
Flash:		4 MB	8MB
SRAM:		8 MB	16 MB
Firmware		EPL & ZPL	CPL/EcPL/ZcPL
Physical Features			
Footprint (D x W x H):		10.0X7.6X7.5" (254X193X191 mm)	9.8x6.8x 6.1" (238X173X155 mm)
Weight:		4.6 lbs (2.1 kg)	4.4 lbs (2.0kg)
Imaging Features			
Rotated (0°, 90°, 180°, 270°):		Yes	Yes
# of Resident Fonts:		5 for EPL & 17 for ZPL	11
Expandable Vertically & Horizontally:		Yes	Yes
Unicode compliant		Yes	No
Media Features			
Maximum Media Width:		4.25" (108 mm)	4.25" (108 mm)
Minimum Media Width:		0.75" (19 mm)	2.0" (51 mm)
Maximum Label Length:		39.0" (990 mm)	322" (8179 mm)
Minimum Label Length*:		0.38" (9.7 mm)	Not Published
Thickness:		0.003" - 0.0078" (0.08 mm - 0.20 mm)	Not Published
Maximum OD (Outside Diameter):		5.00" (127mm)	5.5" (140mm)
Minimum ID (Inner Diameter):		0.5" (12.7mm)	1.5" (30.1 mm)
Ribbon Length:		244' (74 m)	262' (80m)
Black Line sensor:		Yes	Yes
Connectivity			
Centronics Parallel:		Yes	Optional
RS-232 :		Yes	Optional
USB:		Yes	Yes
Options & Accessories			
Expandable Memory:		Additional 8 MB Flash	No
Label Taken Sensor:		Option	Option
Cutter:		Yes	Yes
Font Packs :		Option	Not published
Real Time Clock:		Yes	Yes
Keyboard Display Unit:		Yes	Yes
Network Connectivity(Internal):		Yes	Yes
Wireless(Internal):		Bluetooth or 801.11 b/g	No

* 0.5" (12.7mm) in direct mo

Zebra GX420d vs. Samsung SRP-770ii

Price & Warranty	Zebra	Samsung
Model #	<i>GX420d</i>	<i>SRP-770ii</i>
Retail Price:	\$695	\$489
Printer Warranty:	1 year	1 year
Print Features		
Printer Type:	Direct	Direct
Max. Print Speed:	6 ips (152 mm/sec)	5 ips (127 mm/sec)
Printhead Resolution:	203	203
Flash:	4 MB	2MB
SRAM:	8 MB	512KB
Firmware	EPL & ZPL	EPL, ZPL, and SLCS
Physical Features		
Footprint (D x W x H):	8.25X6.75X6.0" (210X171X152 mm)	8.7" x 7.2" x 6.7" (221x 184 x 171mm)
Weight:	3.0 lbs	7.72 lbs
Imaging Features		
Rotated (0°, 90°, 180°, 270°):	Yes	Yes
# of Resident Fonts:	5 for EPL & 17 for ZPL	10
Expandable Vertically & Horizontally:	Yes	Yes
Unicode compliant:	Yes	No
Media Features		
Maximum Media Width:	4.25" (108 mm)	4.4" (112 mm)
Minimum Media Width:	0.75" (19 mm)	1.5" (38 mm)
Maximum Label Length:	39.0" (990 mm)	Not published
Minimum Label Length:	0.38" (9.7 mm)	Not published
Thickness:	0.003" - 0.0078" (0.08mm - 0.20 mm)	Not published
Maximum OD (Outside Diameter):	5.00" (127mm)	5.1" (130mm)
Minimum ID (Inner Diameter):	0.5" (12.7mm)	1.0" (25.4 mm)
Ribbon Length:	N/A	N/A
Black Line sensor:	Yes	Yes
Connectivity		
Centronics Parallel:	Yes	Yes
RS-232:	Yes	Yes
USB:	Yes	Yes
Options & Accessories		
Expandable Memory:	Additional 8 MB Flash	Not published
Label Taken Sensor:	Option	Option
Cutter:	Yes	Yes
Font Packs	Option	Not published
Real Time Clock:	Yes	Yes
Keyboard Display Unit:	Yes	Yes
Network Connectivity(Internal):	Yes	Yes
Wireless:	Bluetooth and 801.11 b/g	Bluetooth

V. Preventative Maintenance and Warranty Information

Cleaning:

The Zebra G-series exterior is cleaned with a lint-free cloth, and if necessary, a mild detergent solution or desktop cleaner can be used. Interior components (print head, platen, media path, and label dispenser bar) are cleaned with alcohol or blown air.

Lubrication

All mechanical parts of the G-series printer are self-lubricating and do not require additional lubrication.

Warranty Information

All Zebra products are sold with warranties. Refer to the User's Guide for warranty information specific to each product. Here is some general information:

Printer Products

Printers. All printers (excluding printheads) are warranted against defect in material or workmanship for twelve (12) months from the purchase date.

Proof of purchase or shipment date is required to validate the warranty period. The warranty becomes void if the equipment is modified, improperly installed or used, damaged by accident or neglect, or if any parts are improperly installed or replaced by the user.

NOTE: Products returned must be packaged in the original or comparable packing and shipping container. In the event equipment is not so packaged, or if shipping damage is evident, it will not be accepted for service under warranty. Surface transportation charges for return to customers in the continental United States is paid by Zebra. Otherwise, Zebra pays CPT (carriage paid to) nearest airport; customer pays customs, duties, taxes, and freight from airport to destination. If Zebra determines that the product returned for warranty service or replacement is not defective as herein defined, the customer will pay all handling and transportation costs.

Printheads. Since printhead wear is part of normal operation, the original printhead is covered by a limited **6 month** warranty. Warranty period begins on purchase date.

To qualify for this warranty, the printhead must be returned to the factory or to an authorized service center. Customers are not required to purchase Zebra supplies (media and/or ribbons) for warranty qualification. However, if it is determined that the use of other manufacturer supplies has caused any defect in the printhead for which a warranty claim is made, the user is responsible for Zebra's labor and material charges required to repair the defect. The warranty becomes void if the printhead is physically worn or damaged; also if it is determined that failure to follow the preventive maintenance schedule listed in the User's Guide has caused defect in the thermal printhead for which a warranty claim is made.

Software. Software is warranted to be free of defects in material and workmanship for 30 days from the date of purchase. In the event of notification within the warranty period of defects, Zebra will replace the defective diskette or documentation.

Parts. All parts, maintenance kits, options kits, and accessories are warranted to be free of defects in material and workmanship for 90 days (except where otherwise denoted) from date of purchase. This warranty becomes void if the item is modified, improperly installed or used, or damaged by accident or neglect.

VI. Zebra Supplies for G-Series

For maximum performance and reliability of the G-series, use of Genuine Zebra supplies is strongly recommended. No other supplies brand is specifically engineered for Zebra printers to provide optimum print quality and the best performance. Zebra offers a variety of labels, tags, and paper to meet specific demands of any application. In case the standard media offering does not meet the requirements of your application, Zebra can create and supply custom media in required sizes.

The standard Zebra supplies offering consists of standard, outside wound, direct thermal media. Alternative sizes and special media can be custom ordered.

Prices are subject to change without notice.

Desktop Ribbons
Supplemental Price Sheet

Ribbons for the G-Series printers

						Price/Roll				
	Width (in)	Width (mm)	Qty/ Carton	Qty/ Outer Box	Part#	Outer Box Weight	1-5 Cartons	6-29 Cartons	30+ Cartons	Stock/ MTO
5319	2.50"	64mm	12	48	05319GS06407	3.5 lbs.	\$ 3.34	\$ 3.17	\$ 3.01	Stock
	3.30"	84mm	12	48	05319GS08407	4.5 lbs.	\$ 4.39	\$ 4.17	\$ 3.96	Stock
	4.30"	110mm	12	48	05319GS11007	5.5 lbs.	\$ 5.71	\$ 5.42	\$ 5.15	Stock
3200	2.50"	64mm	12	12	03200GS06407	3.5 lbs.	\$ 4.14	\$ 3.93	\$ 3.73	Stock
	3.30"	84mm	12	12	03200GS08407	4.5 lbs.	\$ 5.41	\$ 5.13	\$ 4.88	Stock
	4.30"	110mm	12	12	03200GS11007	5.5 lbs.	\$ 7.09	\$ 6.73	\$ 6.40	Stock
5095	2.50"	64mm	12	48	05095GS06407	3.5 lbs.	\$ 7.40	\$ 7.03	\$ 6.68	Stock
	3.30"	84mm	12	48	05095GS08407	4.5 lbs.	\$ 9.70	\$ 9.21	\$ 8.75	Stock
	4.30"	110mm	12	48	05095GS11007	5.5 lbs.	\$ 12.69	\$ 12.06	\$ 11.45	Stock

VII. G-Series Overview Price list

Printer / Features	GK420d	GK420t	GX420d	GX420t	GX430t
Print Speed (inches per second)	5" (127mm)	5" (127mm)	6" (152mm)	6" (152mm)	4" (102mm)
Print Width	4.09" (104mm)	4.09" (104mm)	4.09" (104mm)	4.09" (104mm)	4.09" (104mm)
Media Roll OD	5" (127mm)	5" (127mm)	5" (127mm)	5" (127mm)	5" (127mm)
Resolution (dots per inch)	203 (8)	203 (8)	203 (8)	203 (8)	300 (12)
Standard SRAM or *SDRAM Max label length	8MB/ 39" (991mm)	8MB/ 39" (991mm)	8MB/ 39" (991mm)	8MB/ 39" (991mm)	8MB/ 39" (991mm)
Standard Flash	4MB	4MB	4MB	4MB	4MB
Expanded Flash (total)	N/A	N/A	12MB	12MB	12MB
Programming Languages	EPL2, ZPL II & ZBI 2.0	EPL20, ZPL II & ZBI 2.0	EPL2, ZPL II & ZBI 2.0	EPL2, ZPL II & ZBI 2.0	EPL2, ZPL II & ZBI 2.0I
Supports Line Mode (direct thermal only)	Yes	No	Yes	No	No
Standard Interface	Serial, USB	Serial, USB	Serial, USB, Parallel	Serial, USB, Parallel	Serial, USB, Parallel
Optional Interface – 10/100 ZebraNet PrintServer (internal only)	Yes	Yes	Yes	Yes	Yes
Optional Interface/Connectivity USB, Serial, and 802.11 b/g with LCD	No	No	Yes	Yes	Yes
Optional Interface/Connectivity USB, Serial, and Bluetooth with LCD	No	No	Yes	Yes	Yes
Optional Adjustable Media Sensor	No	No	Yes	Yes	Yes
Additional Media Options	Dispenser	Dispenser	Dispenser, Cutter	Dispenser, Cutter	Dispenser, Cutter

VII. G-Series Price List Cont.

GK420 – Configurations													203 dpi		
<p>GK420d/t printers include a 4" (102mm) printhead, up to 5" (127mm) print speed per second, 203 dpi resolution, 5.0" (127mm) OD media capacity, serial, USB, and optional 10/100 Ethernet interfaces, Head-up sensor, 4MB Flash memory and 8MB SRAM memory standard, standard maximum label length of 39" (991mm), supports Line Mode (direct thermal only), ZebraDesigner label design software, and Windows drivers with every GK420 printer. Refer to the GK420 Printer Specification for more detail. Accessory and option descriptions and prices are listed on page 6&7.</p>															
Part Number													Description	List Price (USD)	
													Print Resolution & Technology		
G	K	4	2	-	1								203 DPI Printhead & Thermal Transfer "t" print technology	695	
G	K	4	2	-	2								203 DPI Printhead & Direct Thermal "d" print technology	595	
													Programming Language		
					0								EPL2 and ZPL II Programming Languages (standard)	N/C	
					1								EPL2, ZPL II, and ZBI 2.0 Programming Languages*	99	
													Interface (connectivity)		
					0	1							USB and Serial	N/C	
					0	2							USB, Ethernet (10/100)	149	
													Power Cords		
									N				No power cord	N/C	
									1				USA	N/C	
									2				Europe, UK	N/C	
									4				Australia	N/C	
									7				China	N/C	
									8				Argentina	N/C	
									9				Japan	N/C	
													Media Options		
									0				No Options (standard)	N/C	
									1				Dispenser (peeler)**	35	
													Special Options		
												0	None	N/C	
													Memory		
												0	Standard Flash (4MB), Standard SDRAM (8MB), No Real Time Clock	N/C	
													User Documentation		
													0	English/European/Latin America/Asian	N/C
G	K	4	2	-	1	0	0	2	1	0	-	0	0	Example: GK420 printer, 203 DPI, thermal transfer print method, EPL and ZPL programming languages, USB and 10/100 Ethernet connectivity, US cords, no media options	844

* Available in late Q2/08

** Available in Q3/08

VII. G-Series Price List Cont.

GX420 – Configurations														203/300 dpi		
<p>GX420d/t printers include a 4" (102mm) printhead, up to 6" (152mm) print speed per second, 203 dpi resolution(GX430t is 300 dpi), 5.0" (127mm) OD media capacity, serial, USB, parallel, and optional 10/100 Ethernet or wireless connectivity(with LCD) interfaces, Head-up sensor, 4MB Flash memory and 8MB SRAM memory standard, standard maximum label length of 39" (991mm), supports Line Mode (direct thermal only), ZebraDesigner label design software, and Windows drivers with every GK420 printer. Refer to the GX420 Printer Specification for more detail. Accessory and option descriptions and prices are listed on page 6&7.</p>																
Part Number														Description	List Price (USD)	
Print Resolution &Technology																
G	X	4	2	-	1	-	-	-	-	-	-	-	-	-	203 DPI Printhead & Thermal Transfer "t" print technology	795
G	X	4	3	-	1	-	-	-	-	-	-	-	-	-	300 DPI Printhead & Thermal transfer "t" print technology	850
G	X	4	2	-	2	-	-	-	-	-	-	-	-	-	203 DPI Printhead & Direct Thermal "d" print technology	695
Programming Language																
-	-	-	-	-	0	-	-	-	-	-	-	-	-	-	EPL2 and ZPL II Programming Languages (standard)	N/C
-	-	-	-	-	1	-	-	-	-	-	-	-	-	-	EPL2, ZPL II, and ZBI 2.0 Programming Languages*	99
Interface (connectivity)																
-	-	-	-	-	0	3	-	-	-	-	-	-	-	-	USB , Serial, and Parallel	N/C
-	-	-	-	-	0	4	-	-	-	-	-	-	-	-	USB, Serial, and Ethernet (10/100)	149
-	-	-	-	-	1	7	-	-	-	-	-	-	-	-	USB, Serial, and 802.11 b/g with LCD*	249
-	-	-	-	-	1	8	-	-	-	-	-	-	-	-	USB, Serial, and Bluetooth with LCD*	149
Power Cords																
-	-	-	-	-	-	-	-	-	-	N	-	-	-	-	No power cord	N/C
-	-	-	-	-	-	-	-	-	-	1	-	-	-	-	USA	N/C
-	-	-	-	-	-	-	-	-	-	2	-	-	-	-	Europe, UK	N/C
-	-	-	-	-	-	-	-	-	-	4	-	-	-	-	Australia	N/C
-	-	-	-	-	-	-	-	-	-	7	-	-	-	-	China	N/C
-	-	-	-	-	-	-	-	-	-	8	-	-	-	-	Argentina	N/C
-	-	-	-	-	-	-	-	-	-	9	-	-	-	-	Japan	N/C
Media Options																
-	-	-	-	-	-	-	-	-	-	0	-	-	-	-	No Options (standard)	N/C
-	-	-	-	-	-	-	-	-	-	1	-	-	-	-	Dispenser (peeler)**	35
-	-	-	-	-	-	-	-	-	-	2	-	-	-	-	Cutter- liner and tag**	200
Special Options																
-	-	-	-	-	-	-	-	-	-	0	-	-	-	-	None	N/C
-	-	-	-	-	-	-	-	-	-	1	-	-	-	-	Adjustable Black line Sensor	95
Memory																
-	-	-	-	-	-	-	-	-	-	0	-	-	-	-	Standard Flash (4MB), Standard SDRAM (8MB), No Real Time Clock	N/C
-	-	-	-	-	-	-	-	-	-	4	-	-	-	-	Full Flash (12 MB), Standard SDRAM (8 MB), Real Time Clock	349
User Documentation																
-	-	-	-	-	-	-	-	-	-	0	-	-	-	-	English/European/Latin America/Asian	N/C
G	X	4	2	-	1	0	0	3	1	0	-	0	0	0	Example: GX420 printer, 203 DPI, thermal transfer print method, EPL and ZPL programming languages, USB, Serial, and parallel interface with US cords, no media options	795

* Available in late Q2/08

** Available in Q3/08

VII. G-Series Price List Cont.

Accessories for G-Series Desktop Printers								
P/N	Description	RoHS	List price (USD)	Printers				
				GK420d	GK420t	GX420d	GX420t	GX430t
Documentation								
105934-052	CD-ROM, Desktop Printers Software & Documentation	•	10	•	•	•	•	•
Keyboards (for stnd alone printing solutions)								
120181-005G	Keyboard Display Unit (KDU)	•	225	•	•	•	•	•
120182G-001	KDU Plus	•	379	•	•	•	•	•
Connectivity								
105850-006	USB Interface Cable 6' (A to B)	•	14	•	•	•	•	•
G105850-007	USB Interface Cable 10' (A to B)	•	20	•	•	•	•	•
G105950-054	Serial Interface Cable - 6' (DB-9 to DB-9) Null Modem	•	20	•	•	•	•	•
105850-025	KIT, Parallel, I/F CBL DB25M-25M,6FT	•	30			•	•	•
105850-024	KIT, Parallel, I/F CBL DB25M-25M,10FT	•	30			•	•	•
105850-027	KIT, CEN36F-DB25M Parallel Adapter	•	15			•	•	•
Power for Plus220 - 3 prong grounded connector								
105934-053	GK Power supply with USA, Europe cords	•	100	•	•			
105934-054	GX Power supply with USA, Europe cords	•	120			•	•	•
105950-014	Power Cord, 120V US C13 (set of 5)	•	40	•	•	•	•	•
105950-015	Power Cord, 220V Euro C13 (set of 5)	•	60	•	•	•	•	•
105950-030	Power Cord, 240V UK,C13 (set of 5)	•	90	•	•	•	•	•
105950-029	Power Cord, 240V AUS C13 (set of 5)	•	90	•	•	•	•	•
105950-078	Power Cord, 220V China C13 (set of 5)	•	90	•	•	•	•	•
105950-079	Power Cord, 125V Japan C13 (set of 5)	•	90	•	•	•	•	•
105950-080	Power Cord, 220V Argentina C13 (set of 5)	•	90	•	•	•	•	•
Font Kits								
77840	Five Asian Bitmap Flash Font Pack	•	50	•	•	•	•	•
77842	Over 20 Smooth Scalable Font Pack	•	50	•	•	•	•	•
77844	Korean HY Gothic Hangul™ Smooth Scalable Font	•	50	•	•	•	•	•
77845	Thai Angsana™ Smooth Scalable Font	•	50	•	•	•	•	•
77846	Simplified Chinese Monotype Sung™ Smooth Scalable Font	•	50	•	•	•	•	•
77847	Traditional Chinese Monotype Kai™ Smooth Scalable Font	•	50	•	•	•	•	•
77848	Japanese HGP Gothic B™ Smooth Scalable Font	•	50	•	•	•	•	•
Desktop Printhead								
105934-037	Printhead Assembly, GK420d/ GX420d (203 dpi)	•	126	•		•		
105934-038	Printhead Assembly, GK420t/GX420t (203 dpi)	•	126		•		•	
105934-039	Printhead Assembly, GX430t (300 dpi)	•	263					•

VII. G-Series Price List Cont.

Zebra Keyboards



Zebra Keyboard Display Unit (KDU)

Part Number: 120182G-001

List Price (USD): \$379.00

The Zebra KDU Plus eliminates the need for bulky host computers – creating a stand-alone printing solution. When connected to a Zebra printer, you simply retrieve stored forms, enter variable data, and print the label, Use in a variety of applications to save valuable work space.

Features/Specifications:

- Dimensions: 11.8" x 8.7" (299.72 x 221 mm)
 - 85 touch keys in full-size QWERTY (typewriter) layout
 - Four-line, 40-character LCD display
 - Three auxiliary ports: 2 serial, 1 PS2
 - Operational modes: forms (EPL™ and ZPL®), terminal, and file
 - No power cord needed—power supplied from printer serial port
 - Printers supported: G-series, 2824™, 2844™, 3842™, 2746e™, 2824-Z™, 2844-Z™, 3844-Z™, XiIIIPlus™ series, Z4Mplus™, Z6Mplus™, S4M™, PAX4™ series, 105S™
 - Menu system to configure KDU Plus
 - Firmware upgradeable via serial port
-



Zebra Keyboard Display Unit (KDU)

Part Number: 120181-005G

List Price (USD): \$225.00

Retrieve stored forms and enter variable data via keyboard. The KDU features a two-line LCD display that prompts for input and makes it easy to print labels in a stand-alone mode.

Features/Specifications:

- Dimensions: 7.38" x 3.5" (187.45 x 88.9 mm)
- 62 rubberized touch keys in QWERTY layout
- Two-line, 20-character LCD display
- One operational mode: EPL forms
- No power cord needed—power supplied from printer serial port
- Printers supported: 2824, 2844, 2746e, 3842, G-series

VII. G-Series Price List Cont. Software for G-series

ZebraDesigner Pro

Model/Part Number: 13831-001

List Price (USD): \$250.00

Description: This label design software easily creates complex bar code labels with the Windows-based interface. An unlicensed version with limited functionality, ZebraDesigner, ships free with the printer CD.

ZebraDesigner® for SAP™ Business Suite

Model/Part Number: 13832-001

List Price (USD): \$495

Description: A graphical bar code label designer tool that generate SAPcript for use with Zebra ZPL-based printers and SAP R/3™.

ZebraNet™ Bridge Enterprise

Model/Part Numbers/Price (USD):

48733-120 1-50 printers \$595.00

48734-120 1-100 printers \$795.00

48735-120 Unlimited printers \$995.00

Description: A printer management software tool that speeds and simplifies deployment of Zebra printers. An unlicensed version with limited functionality ships FREE with the printer CD, and can also be found at www.zebra.com/printermanagement.

ZBI™ 2.0 Enablement Kit

Model/Part Number/Price (USD):

48766-001 For 1 printer \$99.00

48767-001 For 5 printers \$495.00

Description: Powerful programming language that lets printers run standalone applications, connect to peripherals, and much more. Visit www.zebrasoftware.com for additional information.

For more detail and current pricing on Zebra software solutions, please refer to AccessZebra at www.accesszebra.com. Specification and pricing subject to change without notice.

VIII. Zebra G-Series Printer Specifications

Specifications are provided for reference and are based on printer tests using Zebra brand ribbons and labels. Results may vary in actual application settings or when using other than recommended Zebra supplies. Zebra recommends always qualifying any application with thorough testing.

- Zebra GK420d and GK420t
- Zebra GX420d, GX420t and GX430t

ZEBRA GK420d™ & GK420t™ PRINTER SPECIFICATIONS

Specifications are provided for reference and are based on printer tests using Zebra brand ribbons and labels. Results may vary in actual application settings or when using other than recommended Zebra supplies. Zebra recommends always qualifying any application with thorough testing.



Standard Features

- Maximum speed 5 ips (127 mm/s)
- OpenACCESS™ design for easy media loading
- 203 dpi print resolution (8 dots/mm)
- Direct thermal (d) and Thermal transfer (t) printing of bar codes, text, and graphics
- Fully enclosed 5.0" (127mm) media compartment
- Dual-wall frame
- ZPL II® programming language
- EPL2® page mode programming language
- EPL Line Mode support (GK420d)
- 32 bit RISC processor
- 8MB Standard SDRAM Memory (3MB available to user)
- 4MB Standard Flash Memory (1.5 MB available to user)
- Zebra E³ Printhead Energy Control
- Dual communications interface: RS-232 Serial & USB (V1.1)
- User interface feed button (ZPL style)
- Odometer for print length tracking
- Unicode™ compliant for multi-language printing
- Auto-Calibration of media
- 16 resident expandable bitmap fonts (ZPL language)
- One resident scalable font (ZPL language)
- 5 resident expandable bitmap fonts (EPL language)
- Auto-switching 100- 240V power supply
- Transmissive and reflective media sensing
- Head-up sensor
- Programmable print speed: 2, 3, 4 & 5ips (51, 76, 102, 127 mm/s)
- Standard Tear-off mode feature
- Zebra printer driver for Windows

Optional Features

- **Dispenser (peeler)** – Label peel and present with label present sensor
- **ZebraNet™ 10/100 Print Server** – internal interface enables Ethernet 10/100 network communication and printing (replaces serial port)
- **Font Packs** – Asian and other international font kits
- **Power cord** – US, Europe, UK, Australia, Argentina, Japan, and China
- **ZBI 2.0** – Factory or field installed

ZPL II – Zebra Programming Language

Provides sophisticated label formatting and printer control. Compatible with tabletop and mobile Zebra printers

Accessories

- **KDU Plus**– full size keyboard with LCD for stand alone printing applications
- **KDU**– keyboard display unit for stand-alone printing applications where space is limited

ZebraLink Solutions

Software

- **ZebraDesigner Pro** – An intuitive, easy-to-use software program for creating complex label designs (option)
- **ZebraDesigner** – Offers basic features for simple label design (standard)
- **ZebraNet Bridge Enterprise** – Centrally manage Zebra printers from a single PC screen anywhere on your global network (option)
- **ZebraNet Utilities v 7.0** – Provides enhanced printing, conversion, and administration capabilities; message management and more (standard)
- **Zebra Universal Driver** – The most powerful driver available from Zebra for Windows 95/98/2000/2003/ME/NT/XP (standard)
- **ZebraDesigner Driver** – Zebra driver compliant with Windows 95/98/2000/2003/ME/NT/XP, and Vista (downloadable from www.Zebra.com)
- **ZBI 2.0** –Powerful programming language that lets printers run standalone applications, connect to peripherals, and much more (option)
- **ZBI-Developer** – Programming utility makes it dramatically easier for programmers to create and test complex ZBI 2.0 programs and distribute them to the printer (standard with ZBI 2.0)

Networking Options

- **Ethernet - ZebraNet™ 10/100 Print Server** - Offered in combination with USB interface (replaces Serial port)

Firmware

- **EPL2®** – Eltron Programming Language simplifies label formatting and enables format compatibility with legacy applications
- **EPL**– Line Mode support (GK420d) enables format compatibility with legacy applications
- **Web View** –Connect and control Zebra bar code printers via the printer's Web interface using a common Web browser
- **Alert** – Printers equipped with ZebraNet print servers will notify you via any email-enabled, wired, or wireless device to minimize downtime

Printing Specifications

- Resolution: 203 dots/inch (dpi) (8 dots/mm)
- Dot Pitch: 0.0049" (0.125mm)
- Maximum print length: 39.0" (991mm)
- Minimum print length: 0.005" (0.127mm – one dot)
- Print length in line mode: Unlimited (GK420d)
- Maximum print width: 4.09" (104mm)
- Minimum print width: 0.005" (0.127mm – one dot)
- Programmable print speed: 2, 3, 4 & 5ips (51, 76, 102, 127 mm/s)
- Bar code modulus "X" dimension: 203 dpi = 5mil to 50mil

Ribbon Specifications (thermal transfer units)

NOTE: For optimum print quality and printer performance, use of Zebra genuine ribbon is recommended as well as a notched ribbon core.

- Ribbon Width: 1.33" (33.8mm) to 4.3" (109mm).
- Ribbon Capacity: 1 roll of ribbon per 1 roll of 5"OD media
- Core ID: 0.5" (12.7 mm).
- Ribbon OD: 1.36" (35 mm).
- Ribbon Length: 244' (74m) using 0.000328" ribbon thickness
- Ribbon Type: Wax, wax/resin, and resin.

Media Specifications

NOTE: For optimum print quality and printer performance, use of Zebra genuine supplies is recommended.

- Media Width: 0.75" (19mm) – 4.25" (108mm)
- Label Length:
 - Using tear off mode:

Minimum Length	Model	Printing Mode
0.38" (9.7 mm)	GK420d	Direct thermal
0.38" (9.7 mm)	GK420t	Thermal transfer
0.5" (12.7 mm)	GK420t	Direct thermal

- Minimum using dispenser -0.50"(12.7 mm)
- Maximum - 39.00" (990mm)
- Min Core Inner Diameter: 0.5" (12.7mm)
- Max Roll Diameter: 5.00" (127mm)
- Media Thickness: 0.003" (0.08mm) - 0.0075" (0.19 mm)
- Media Sensing: fixed reflective and transmissive gap, black line, and notch
- Media Types: Roll-fed or fan-fold, die cut or continuous direct thermal labels with or without black line, tag stock, continuous receipt paper, and wristbands

Calibration Procedure

- The GK420 is equipped with a standard auto-calibration feature that can be set to initiate automatically during start-up of the printer - utilizing two to four labels to calibrate for efficient operation and less waste. The printer will also save the new settings in memory until the next calibration is performed.

- A manual calibration procedure can also be performed, if required. Consult your User's Guide for more details on the specific manual calibration steps.

ZPL Programming Language (ZPL/ZPL II)

- Communicates in printable ASCII characters
- Compatible with mainframe, mini, and PC hosts
- Downloadable objects include graphics and bitmap fonts, label templates and formats
- Automatic memory allocation for format while printing
- Automatic serialization of fields
- Format inversion (white on black)
- Mirror-image printing
- Four position field rotation (0°, 90°, 180°, 270°)
- Slew command
- Programmable label quantities with print, pause
- Status messages to host upon request

ZPL Font Specifications

203 dpi (8 dots/mm)

Font	Matrix (in dots) (H x W)	Type*	Minimum Char. Size (H x W)	Maximum C.P.I.
A	9 x 5	U-L-D	.044" x .030"	33.3
B	11 x 7	U	.054" x .044"	22.7
C,D	18 x 10	U-L-D	.089" x .059"	16.9
E	28 x 15	OCR-B	.138" x .098"	10.2
F	26 x 13	U-L-D	.128" x .079"	12.7
G	60 x 40	U-L-D	.295" x .236"	4.2
H	21 x 13	OCR-A	.103" x .093"	10.8
GS	24 x 24	SYMBOL	.118" x .118"	8.5
P-V		U-L-D	Backward compatible w/ S-300	
Ø	15 x 12	U-L-D	Scalable (Smooth) Font	

* U = upper case, L = lower case, D = descenders

- Character Fonts: Standard bitmapped Zebra fonts: A, B, C, D, E (OCR-B), F, G, H, (OCR-A), GS, P, Q, R, S, T, U, V & Ø Smooth font (CG Triumvirate™ Bold Condensed).
- Supports user defined fonts and graphics – including custom logos
- Bitmap fonts are expandable up to 10 times, height and width independent. Fonts E and H (OCR-B and OCR-A), however, are not considered in spec when expanded.
- Smooth scalable font Ø (CG Triumvirate™ Bold Condensed) is expandable dot-by-dot, height and width independent, while maintaining edges to a max. 1500 x 1500 dots.

ZPL Barcode Symbologies

- **Bar code ratios:** 2:1 (non-rotated) and 3:1
- **Linear bar codes:** Code 11, Code 39, Code 93, Code 128, UPC-A, UPC-E, EAN-8, EAN-13, EAN-14, UPC-A and UPC-E with EAN 2 or 5 digit extensions, Plessey, POSTNET, Standard 2 of 5, Industrial 2 of 5, Interleaved 2 of 5, LOGMARS, MSI, Codabar, and

GS1 DataBar™ (formerly RSS)

- **2-dimensional bar codes:** PDF417, MicroPDF-417, Code 49, Maxicode, Codablock, Data Matrix, QR code, and Aztec

- **2-dimensional bar codes:** Maxicode (modes 2,3,4,6), PDF417, MacroPDF417, QR Code, Data Matrix, and Aztec

EPL Programming Language (EPL2)

- ASCII EPL2 programming language (Page Mode)
- Field Rotations
- Variable field support (up to 100)
- Counter support (up to 10)
- Variable field addition and subtraction
- Status reporting
- Form, fonts, and graphics storage
- Simple set of formatting commands

Communications Specifications

- RS-232 Serial interface, DB-9
- USB V1.1, bi-directional
- Internal 10/100 Ethernet – optional (replaces RS232)

Electrical Specifications

- Auto-detectable (PFC Compliant) 100-240VAC, 50-60Hz rated at 70Watts

EPL Font Specifications

203 dpi (8 dots/mm)

Font	Width (dot)	Height (dot)	CPI
1	8	12	20.3
2	10	16	16.9
3	12	20	4.5
4	14	24	12.7
5	32	48	5.6
8-Simp	32	32	6.3*
8-Trad	32	32	6.3*

* Spacing of Asian characters is controlled via the i command. The formula for CPI is 203 / (32 + i). Thus as i increases, CPI decreases. For example : If i = 2, CPI = 203/34 = 6.0

Agency approvals

- **Emissions:** FCC Part 15, Subpart B, VCCI, C-Tick
- **Emissions and Susceptibility:** (CE): EN55022 Class-B, EN61000-3-2, EN61000-3-3, and EN55024
- **Safety:** CB Scheme IEC 60950:1991 +A1 +A2 +A3 +A4, UL 60950 and C-UL, IRAM, NOM, AAMI, and CCC

Physical Specifications (no options installed)

	GK420d	GK420t
Height	6.0" (152mm)	7.5" (191mm)
Width:	6.75" (171mm)	7.6" (193 mm)
Depth:	8.25" (210mm)	10.0" (254 mm)
Weight:	3.0lbs (1.4kg)	4.6lbs (2.1kg)

Environmental Specifications

- Operating Temperature: 40° to 105°F (4.4° to 41°C)
- Storage Temperature: -40° to 140°F (-40° to 60°C)
- Operating Humidity: 10% to 90% non-condensing R.H.
- Storage Humidity: 5% to 95% non-condensing R.H.

EPL Bar Codes Symbolgies

- **Linear bar codes:** Code 39, Code 128A, B & C (User selectable/Auto), UCC/EAN-128, Code 93, Codabar, Interleaved 2 of 5, UPC-A, UPC-E, UPC-A with 2 and 5 add on, UPC-E with 2 and 5 add on, EAN 13, EAN 8, EAN 13 with 2 and 5 add on, EAN 8 with 2 and 5 add on, Postnet (5, 9, 11, & 13 digit) Japanese Postnet, Plessey (MSI-1), MSI-3, German Post Code, and GS1 DataBar™ (formerly RSS)

Preventative Maintenance

- Zebra recommends cleaning the printer on a regular basis using standard Zebra printer parts and cleaning supplies. Consult your *User's Guide* for further detail

ZEBRA GX420d™, GX420t™, and GX430t™ PRINTER SPECIFICATIONS

Specifications are provided for reference and are based on printer tests using Zebra brand ribbons and labels. Results may vary in actual application settings or when using other than recommended Zebra supplies. Zebra recommends always qualifying any application with thorough testing.



Standard Features

- Maximum speed 6 ips (152 mm/s)
- 4 ips (102 mm/s) maximum print speed - GX430t
- OpenACCESS™ design for easy media loading
- 203 dpi print resolution (8 dots/mm)
- 300 dpi print resolution (12 dots/mm) - GX430t
- Direct thermal (d) and Thermal transfer (t) printing of bar codes, text, and graphics
- Fully enclosed 5.0" (127 mm) media compartment
- Dual-wall frame
- ZPL II® programming language
- EPL2® page mode programming language
- EPL Line Mode support - GX420d
- 32 bit RISC processor
- 8MB Std SDRAM memory (3 MB available to user)
- 4MB Std Flash memory (1.5 MB available to user)
- Zebra E³ Printhead Energy Control
- Triple communications interface: Serial, USB & Parallel
- User interface feed button (ZPL style)
- Odometer for printer length tracking
- Unicode™ compliant for multi-language printing
- Auto calibration of media
- 16 resident expandable ZPL II bitmap fonts
- One resident scalable ZPL font
- 5 resident expandable EPL2 fonts
- Auto-switching 100-240V power supply
- Transmissive and reflective media sensing
- Head-up sensor
- Standard Tear-off mode feature
- Programmable print speeds of 2,3,4,5, & 6 ips (51,76,102,127, & 152 mm/s)
- Zebra printer driver for Windows

Optional Features

- **8 MB Flash Memory w/real time clock**– Total of 12 MB (9.5 MB available to user) for applications requiring additional levels of memory, time, and date information
- **Adjustable media sensor** – full width reflective black line sensor and multi-position gap sensor
- **Ethernet - ZebraNet 10/100 Print Server** – Internal Ethernet, offered in combination with USB & Serial interface (replaces Parallel port)

- **Wireless- 802.11 b/g** with LCD display (replaces Parallel port)
- **Wireless- Bluetooth™** with LCD display (replaces Parallel port)
- **Dispenser (peeler)** – Label dispenser with label present sensor
- **Cutter** –
 - Continuous paper, lined Label & Tag Stock
 - Maximum Thickness 0.0069" (0.175 mm)
- **Font Packs** – Asian and other international font kits
- **Power cord** – US, Europe, UK, Australia, Argentina, Japan, and China
- **ZBI 2.0** – Factory or field installed

Accessories

- **KDU Plus** – full size keyboard with LCD for stand alone printing applications
- **KDU** – keyboard Display Unit for stand-alone printing applications where space is limited

ZebraLink Solutions

Software

ZebraDesigner Pro – An intuitive, easy-to-use software program for creating complex label designs (option)

ZebraDesigner – Offers basic features for simple label design (standard)

ZebraNet Bridge Enterprise – Centrally manage Zebra printers from a single PC screen anywhere on your global network (option).

ZebraNet Utilities v 7.0 – Provides enhanced printing, conversion, and administration capabilities; message management and more (standard).

Zebra Universal Driver – The most powerful driver available from Zebra for Windows 95/98/2000/2003/ME/NT/XP (standard)

ZebraDesigner Driver – Zebra driver compliant with Windows 95/98/2000/2003/ME/NT/XP, and Vista (downloadable from www.Zebra.com)

ZBI 2.0 – Powerful programming language that lets printers run standalone applications, connect to peripherals, and much more (option)

ZBI-Developer – Programming utility makes it dramatically easier for programmers to create and test complex ZBI 2.0 programs and distribute them to the printer (standard with ZBI 2.0)

Networking Options

- Ethernet - ZebraNet 10/100 Print Server-** Offered in combination with USB & Serial interface (replaces Parallel port)
- Wireless-** 802.11 b/g with LCD display (replaces Parallel port)
- Wireless-** Bluetooth™ with LCD display (replaces Parallel port)

Firmware

- EPL2®** – Eltron Programming Language simplifies label formatting and enables format compatibility with legacy applications
- EPL** – Line Mode support (GX420d) enables format compatibility with legacy applications
- ZPL II** – Universal language for Zebra printers. Simplifies label formatting and enables format compatibility with existing systems that run Zebra printers.
- Web View** – Connect and control Zebra bar code printers via the printer's Web interface using a common Web browser (ZPL mode).
- Alert** – Printers equipped with ZebraNet print servers will notify you via any email-enabled, wired, or wireless device to minimize downtime (ZPL mode).

Printing Specifications

Resolution	203 dots/inch (dpi) (8 dots/mm)	300 dots/inch (dpi) (12 dots/mm)
Speed Inch/sec - ips (mm/sec)	Programmable 2, 3, 4, 5 with 6 max. (51, 76, 102, 127 with max.152)	Programmable 2, 3 with 4 max. (51, 76, with max.102)
Dot Pitch	0.0049" (0.13 mm)	0.0033" (0.08mm)
Max. print length	39.0" (991 mm)	39.0" (991 mm)
Min. print length	One dot	One dot
Max. print width	4.09" (104 mm)	4.09" (104 mm)
Min. print width	One dot	One dot
Bar code modulus "X" Dimension	5 mil to 50 mil	3.27 mil to 32.67 mil

Ribbon Specifications (thermal transfer units)

NOTE: For optimum print quality and printer performance, use of Zebra genuine ribbon is recommended as well as a notched ribbon core

- Ribbon Width: 1.33" (33.8 mm) to 4.3" (109 mm)
- Ribbon Capacity: 1 roll of ribbon per 1 roll of 5" OD media
- Core ID: 0.5" (12.7 mm)
- Ribbon OD: 1.36" (35 mm)
- Ribbon Length: 244' (74 m) using 0.000328" ribbon thickness
- Ribbon Type: wax, wax/resin and resin

Media Specifications

NOTE: For optimum print quality and printer performance, use of Zebra genuine supplies is recommended.

- Media Width: 0.75" (19 mm) - 4.25" (108 mm)
- Label Length:
 - Using tear off mode:

Minimum length	Model	Printing Mode
0.38" (9.7 mm)	GX420d	Direct thermal
0.38" (9.7 mm)	GX420t & GX430t	Thermal transfer
0.50" (12.7 mm)	GX420t & GX430t	Direct thermal

- Minimum with label present sensor used - 0.50" (12.7 mm)
- Minimum with cutter - 1.0" (25.4 mm)
- Maximum with standard memory - 39.00" (990 mm)
- Min Core Inner Diameter: 0.5" (12.7 mm)
- Max Roll Diameter: 5.00" (127 mm)
- Media Thickness: 0.003" (0.08 mm) - 0.0075" (0.19 mm)
- Media Sensing: fixed reflective and transmissive gap, black line, and notch
- Media Types: Roll-fed or fan-fold, die cut or continuous direct thermal labels with or without black mark, tag stock, continuous receipt paper, and wristbands

Calibration Procedure

- The GX420 and GX430 is equipped with a standard auto-calibration feature that can be set to initiate automatically during start-up of the printer - utilizing two to four labels to calibrate for efficient operation and less waste. The printer will also save the new settings in memory until the next calibration is performed.
- A manual calibration procedure can also be performed, if required. Consult your User's Guide for more details on the specific manual calibration steps.

ZPL Programming Language (ZPL/ZPL II)

- Communicates in printable ASCII characters
- Compatible with mainframe, mini, and PC hosts
- Downloadable objects include graphics and bitmap fonts, label templates and formats
- Automatic memory allocation for format while printing
- Automatic serialization of fields
- Format inversion (white on black)
- Mirror-image printing
- Four position field rotation (0°, 90°, 180°, 270°)
- Slew command
- Programmable label quantities with print, pause
- Status messages to host upon request

ZPL Font Specifications

203 dpi (8 dots/mm)

Font	Matrix (in dots) (H x W)	Type*	Minimum Char. Size (H x W)	Maximum C.P.I.
A	9 x 5	U-L-D	.044" x .030"	33.3
B	11 x 7	U	.054" x .044"	22.7
C,D	18 x 10	U-L-D	.089" x .059"	16.9
E	28 x 15	OCR-B	.138" x .098"	10.2
F	26 x 13	U-L-D	.128" x .079"	12.7
G	60 x 40	U-L-D	.295" x .236"	4.2
H	21 x 13	OCR-A	.103" x .093"	10.8
GS	24 x 24	SYMBOL	.118" x .118"	8.5
P-V		U-L-D	Backward compatible w/ S-300	
Ø	15 x 12	U-L-D	Scalable (Smooth) Font	

300 dpi (12 dots/mm), GX430t

Font	Matrix (in dots) (H x W)	Type*	Minimum Char. Size (H x W)	Maximum C.P.I.
A	9 x 5	U-L-D	.030" x .020"	50.8
B	11 x 7	U	.037" x .030"	33.8
C,D	18 x 10	U-L-D	.060" x .040"	25.4
E	41 x 20	OCR-B	.138" x .085"	11.5
F	26 x 13	U-L-D	.085" x .053"	19.06
G	60 x 40	U-L-D	.200" x .160"	6.36
H	30 x 19	OCR-A	.100" x .098"	10.02
GS	24 x 24	SYMBOL	.80" x .80"	12.7
P-V		U-L-D		
Ø	15 x 12	U-L-D	Scalable (Smooth) Font	

*U = upper case, L = lower case, D = descenders

- Character Fonts: Standard bitmapped Zebra fonts: A, B, C, D, E (OCR-B), F, G, H, (OCR-A), GS, P, Q, R, S, T, U, V & Ø Smooth font (CG Triumvirate™ Bold Condensed).
- Supports user defined fonts and graphics – including custom logos
- Bitmap fonts are expandable up to 10 times, height and width independent. Fonts E and H (OCR-B and OCR-A), however, are not considered in spec when expanded.
- Smooth scalable font Ø (CG Triumvirate™ Bold Condensed) is expandable dot-by-dot, height and width independent, while maintaining edges to a max. 1500 x 1500 dots.

ZPL Bar Code Symbolologies

- **Bar Code Ratios:** 2:1 (non-rotated) and 3:1
- **Linear Bar Codes:** Code 11, Code 39, Code 93, Code 128, UPC-A, UPC-E, EAN-8, EAN-13, EAN-14, UPC-A and UPC-E with EAN 2 or 5 digit extensions, Plessey, POSTNET, Standard 2 of 5, Industrial 2 of 5, Interleaved 2 of 5, LOGMARS, MSI, Codabar, and GS1 DataBar™ (formerly RSS)
- **2-Dimensional:** PDF417, MicroPDF-417, Code 49, Maxicode, Codablock, Data Matrix, QR code, Aztec

EPL Programming Language (EPL2)

- ASCII EPL2 programming language (Page Mode)
- EPL Line Mode
- Field Rotations
- Variable field support (up to 100)
- Counter support (up to 10)
- Variable field addition and subtraction
- Status reporting
- Form, fonts, and graphics storage
- Simple set of formatting commands
- Support of selected bar codes

EPL Font Specifications

203 dpi (8 dots/mm)

Font	Width (dot)	Height (dot)	CPI
1	8	12	20.3
2	10	16	16.9
3	12	20	4.5
4	14	24	12.7
5	32	48	5.6
8-Simp	32	32	6.3*
8-Trad	32	32	6.3*

* Spacing of Asian characters is controlled via the i command. The formula for CPI is 203 / (32 + i). Thus as i increases, CPI decreases. For example: If i = 2, CPI = 203/34 = 6.0

300 dpi (12 dots/mm)

Font	Width (dot)	Height (dot)	CPI
1	12	20	25.0
2	16	28	18.8
3	20	36	15.0
4	24	44	12.5
5	48	80	6.3

EPL Bar Codes

- **Linear Bar Codes:** Code 39, Code 128A, B & C(User selectable/Auto), UCC/EAN-128, Code 93, Codabar, Interleaved 2 of 5, UPC-A, UPC-E, UPC-A with 2 and 5 add on, UPC-E with 2 and 5 add on, EAN 13, EAN 8, EAN 13 with 2 and 5 add on, EAN 8 with 2 and 5 add on, Postnet (5, 9, 11, & 13 digit) Japanese Postnet, Plessey (MSI-1), MSI-3, German Post Code, and GS1 DataBar™ (formerly RSS)
- **2-Dimensional:** Maxicode (modes 2,3,4,6), PDF417, MacroPDF417, QR Code, Data Matrix, and Aztec

Communications Specifications

- RS-232 Serial interface, DB-9
- USB V1.1, bi-directional
- Internal 10/100 Ethernet – optional (replaces Parallel port)
- Bi-directional Parallel with DB-25 female connector
- **Wireless-** 802.11 b/g with LCD display – optional (this configuration eliminates Parallel port)
- **Wireless-** Bluetooth™ with LCD display – optional (this configuration eliminates Parallel port)

Electrical Specifications

- Auto-detectable (PFC Compliant) 100-240VAC, 50-60Hz, rated at 100 Watts

Agency approvals

- **Emissions:** FCC Part 15, Subpart B, VCCI, C-Tick
- **Emissions and Susceptibility:** (CE): EN55022 Class-B, EN61000-3-2, EN61000-3-3, and EN55024
- **Safety:** CB Scheme IEC 60950:1991 +A1 +A2 +A3 +A4, TUV NRTL, IRAM, NOM, AAMI, and CCC

Physical Specifications *(no options installed)*

	GX420d	GX420t/GX430t
Height	6.0" (152 mm)	7.5" (191 mm)
Width:	6.75" (171 mm)	7.6" (193 mm)
Depth:	8.25" (210mm)	10.0" (254 mm)
Weight:	3 lbs (1.4 kg)	4.6 lbs (2.1 kg)

Environmental Specifications

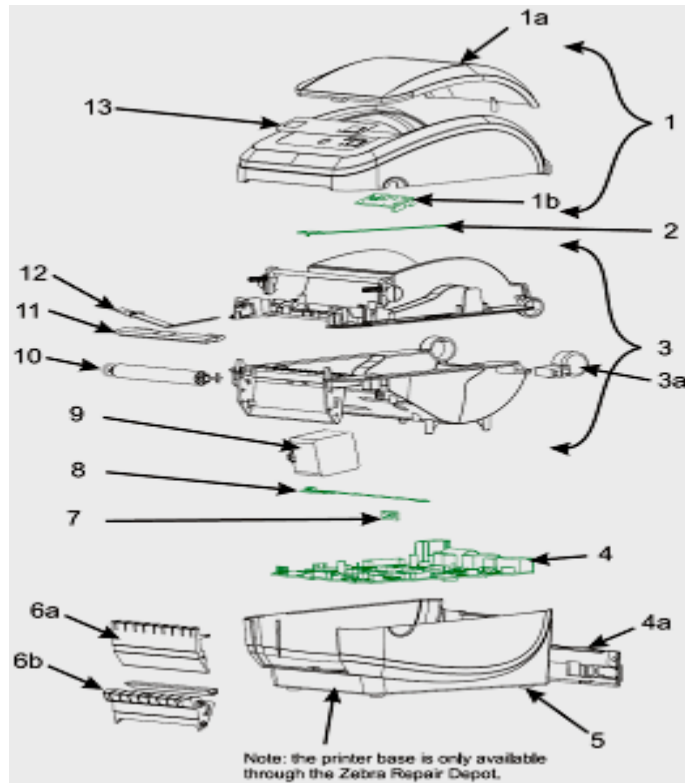
- Operating Temperature: 40° to 105°F (4.4° to 41°C)
- Storage Temperature: -40° to 140°F (-40° to 60°C)
- Operating Humidity: 10% to 90% non-condensing R.H.
- Storage Humidity: 5% to 95% non-condensing R.H.

Preventative Maintenance

- Zebra recommends cleaning the printer on a regular basis using standard Zebra printer parts and cleaning supplies. Consult your *User's Guide* for further details

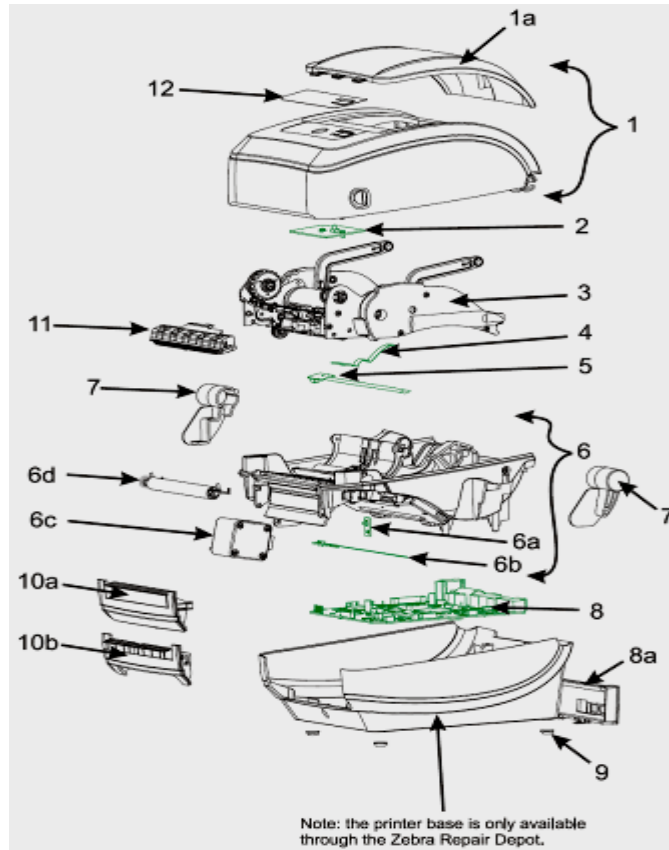
IX. G-series Spare parts

Spare Parts Listing – GK420d



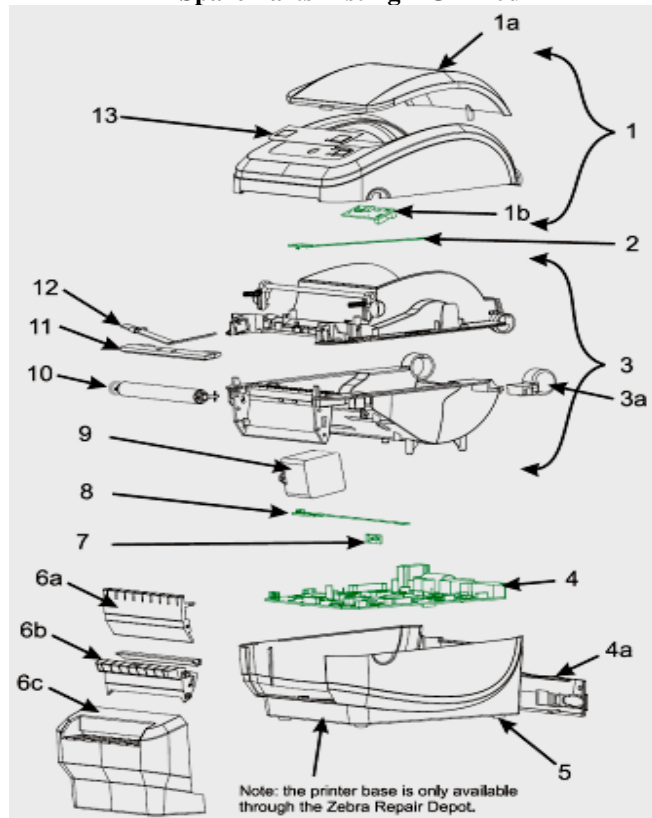
Item	Description	Part Number
1	Cover Assy (d) (includes Media Window)	105934-005
1a	Media Window (d)	105934-001
1b	Feed Switch (d)	105934-003
2	Upper Gap Sensor, Fixed (d)	105934-007
3	Print Mech. Fixed Sensor (d) (includes Hinge, Print Head Cables, Feed Switch Cable)	105934-011
3a	Cover Hinge (d)	105934-047
4	GK Main Logic Board, USB/Serial	105934-070
4a	Back Panel, USB/Serial (d)	105934-071
4	GK Main Logic Board, USB/Ethernet	105934-073
4a	Back Panel, USB/Ethernet (d)	105934-074
	Interface Fuse, 1A	105934-076
5	Rubber Foot (set of 4)	105934-024
6a	Front Bezel, Std (d)	105934-025
6b	Front Bezel, Dispenser (d)	105934-026
7	Head Up Sensor (d)	105934-041
8	Gap/Blackline Sensor, Fixed (d)	105934-043
9	Motor Assy., 203dpi	105934-022
10	Platen, Std (d)	105934-034
11	Printhead, 203dpi (d)	105934-037
12	Printhead Spring/Clip (d)	105934-040
13	Nameplate, GK420d	105934-060
	Shipping Pack (d)	105934-050
	Users CD-ROM	105934-052
	Power Supply, 70W C13 with US & Euro Cords	105934-053
	Power Cord, 220V Euro C13 (set of 5)	105950-015
	Power Cord, 240V UK,C13 (set of 5)	105950-030

Spare Parts Listing – GK420t



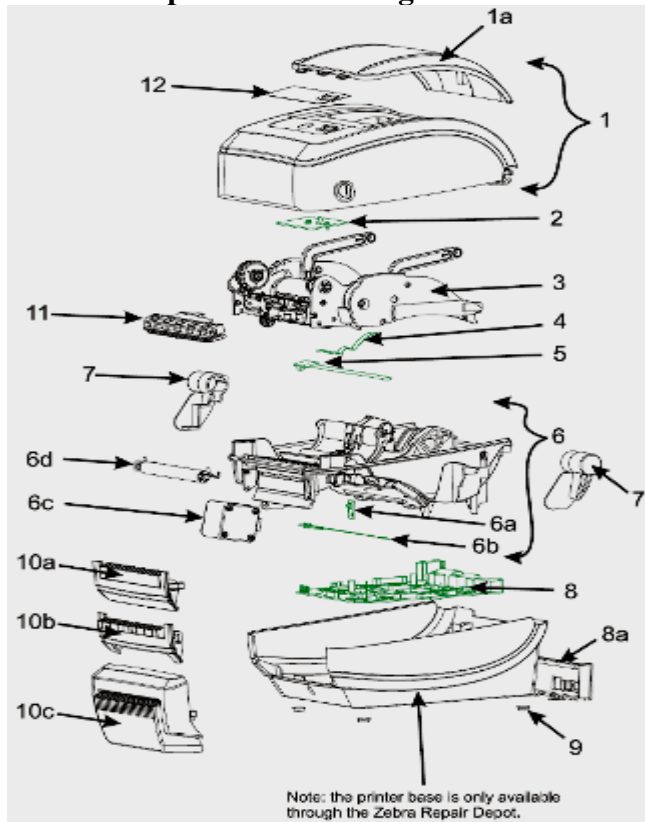
Item	Description	Part Number
1	Cover Assy (t) (includes Media Window)	105934-006
1a	Media Window (t)	105934-002
2	Feed Switch (t)	105934-004
3	Ribbon Carriage, 203 dpi	105934-017
4	Upper Gap Sensor, Fixed (t)	105934-009
5	Ribbon Out Sensor (t)	105934-046
6	Print Mech. Fixed Sensor (t) inc. Gap/Blackline Snsr, Motor, Platen, Head Up Snsr	105934-013
6b	Gap/Blackline Sensor, Fixed (t)	105934-045
6a	Head Up Sensor (t)	105934-042
6c	Motor Assy., 203dpi	105934-022
6d	Platen, Std (t)	105934-035
7	Cover Hinge R&L (t)	105934-048
8	GK Main Logic Board, USB/Serial	105934-070
8a	Back Panel, USB/Serial (t)	105934-072
8	GK Main Logic Board, USB/Ethernet	105934-073
8a	Back Panel, USB/Ethernet (t)	105934-075
	Interface Fuse, 1A	105934-076
9	Rubber Foot (set of 4)	105934-024
10a	Front Bezel, Std (t)	105934-030
10b	Front Bezel, Dispenser (t)	105934-031
11	Printhead, 203dpi (t)	105934-038
12	Nameplate, GK420t	105934-061
	Shipping Pack (t)	105934-051
	Users CD-ROM	105934-052
	Power Supply, 70W C13 with US & Euro Cords	105934-053
	Power Cord, 220V Euro C13 (set of 5)	105950-015
	Power Cord, 240V UK,C13 (set of 5)	105950-030

Spare Parts Listing – GX420d



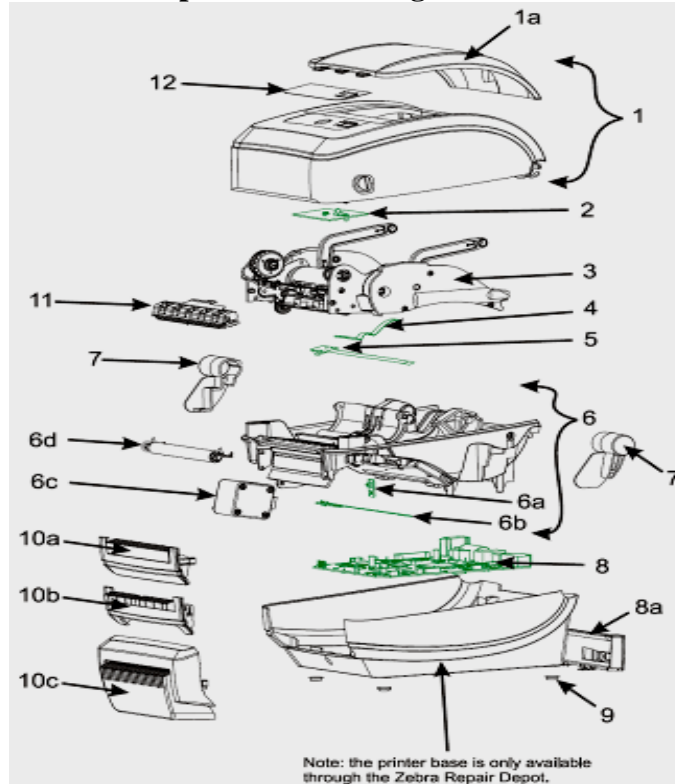
Item	Description	Part Number
1	Cover Assy (d) (includes Media Window)	105934-005
	LCD Cover Assy (d) (includes Media Window)	105934-049
1a	Media Window (d)	105934-001
1b	Feed Switch (d)	105934-003
	LCD Display/Feed Switch (with Bluetooth Wireless)	105934-056
	LCD Display/Feed Switch (with 802.11g Wireless)	105934-057
2	Upper Gap Sensor, Fixed (d)	105934-007
2	Upper Gap Sensor, Movable (d)	105934-008
3	Print Mech, Fixed Sensor (d) (includes Hinge, Print Head Cables, Feed Switch Cable)	105934-011
3	Print Mech, Movable Sensor (d) (includes Hinge, Print Head Cables, Feed Switch Cable)	105934-012
3a	Cover Hinge (d)	105934-047
4	GX Main Logic Board, USB/Serial/Parallel	105934-080
4	GX Main Logic Board, USB/Serial/Parallel, XMEM, RTC	105934-081
4a	Back Panel, USB/Serial/Parallel (d)	105934-082
4	GX Main Logic Board, USB/Serial/Ethernet	105934-084
4	GX Main Logic Board, USB/Serial/Ethernet, XMEM, RTC	105934-085
4a	Back Panel, USB/Serial/Ethernet (d)	105934-086
4	GX Main Logic Board, USB/Serial/802.11g Wireless XMEM	105934-091
4	GX Main Logic Board, USB/Serial/Bluetooth Wireless XMEM	105934-092
4a	Back Panel, USB/Serial/Wireless (d)	105934-089
	Interface Fuse, 1A	105934-076
	Battery, 3V Lithium (set of 10)	G105950-003
5	Rubber Foot (set of 4)	105934-024
6a	Front Bezel, Std (d)	105934-025
6b	Front Bezel, Dispenser (d)	105934-026
6c	Medium Duty Cutter (d)	105934-029
7	Head Up Sensor (d)	105934-041
8	Gap/Blackline Sensor, Fixed (d)	105934-043
8	Gap/Blackline Sensor, Moveable	105934-044
9	Motor Assy., 203dpi	105934-022
10	Platen, Std (d)	105934-034
11	Printhead, 203dpi (d)	105934-037
12	Printhead Spring/Clip (d)	105934-040
13	Nameplate, GX420d	105934-062
	Nameplate, GX420d with LCD	105934-067
	Shipping Pack (d)	105934-050
	Users CD-ROM	105934-052
	Power Supply, 100W C13 with US & Euro Cords	105934-054
	Power Cord, 220V Euro C13 (set of 5)	105960-015
	Power Cord, 240V UK, C13 (set of 5)	105960-030

Spare Parts Listing – GX420t



Item	Description	Part Number
1	Cover Assy (t) (includes Media Window)	105934-006
	LCD Cover Assy (t) (includes Media Window)	Depot Only
1a	Media Window (t)	105934-002
2	Feed Switch (t)	105934-004
	LCD Display/Feed Switch (with Bluetooth Wireless)	105934-056
	LCD Display/Feed Switch (with 802.11g Wireless)	105934-057
3	Ribbon Carriage, 203 dpi	105934-017
4	Upper Gap Sensor, Fixed (t)	105934-009
	Upper Gap Sensor, Movable (t)	105934-010
5	Ribbon Out Sensor (t)	105934-046
6	Print Mech, Fixed Sensor (t) inc. Gap/Blackline Snsr, Motor, Platen, Head Up Snsr	105934-013
6b	Gap/Blackline Sensor, Fixed (t)	105934-045
6	Print Mech, Moveable Sensor (t) inc. Gap/Blackline Snsr, Motor, Platen, Head Up Snsr	105934-014
6b	Gap/Blackline Sensor, Moveable	105934-044
6a	Head Up Sensor (t)	105934-042
6c	Motor Assy., 203dpi	105934-022
6d	Platen, Std (t)	105934-035
7	Cover Hinge R&L (t)	105934-048
8	GX Main Logic Board, USB/Serial/Parallel	105934-080
8	GX Main Logic Board, USB/Serial/Parallel, XMEM, RTC	105934-081
8a	Back Panel, USB/Serial/Parallel (t)	105934-083
8	GX Main Logic Board, USB/Serial/Ethernet	105934-084
8	GX Main Logic Board, USB/Serial/Ethernet, XMEM, RTC	105934-085
8a	Back Panel, USB/Serial/Ethernet (t)	105934-087
8	GX Main Logic Board, USB/Serial/802.11g Wireless XMEM	105934-091
8	GX Main Logic Board, USB/Serial/Bluetooth Wireless XMEM	105934-092
8a	Back Panel, USB/Serial/Wireless (t)	105934-090
	Interface Fuse, 1A	105934-076
	Battery, 3V Lithium (set of 10)	G105950-003
9	Rubber Foot (set of 4)	105934-024
10a	Front Bezel, Std (t)	105934-030
10b	Front Bezel, Dispenser (t)	105934-031
10c	Medium Duty Cutter (t)	105934-033
11	Printhead, 203dpi (t)	105934-038
12	Nameplate, GX420t	105934-063
	Nameplate, GX420t with LCD	105934-068
	Shipping Pack (t)	105934-051
	Users CD-ROM	105934-052
	Power Supply, 100W C13 with US & Euro Cords	105934-054
	Power Cord, 220V Euro C13 (set of 5)	105950-015
	Power Cord, 240V UK C13 (set of 5)	105950-030

Spare Parts Listing – GX430t



Item	Description	Part Number
1	Cover Assy (t) (includes Media Window)	105934-006
	LCD Cover Assy (t) (includes Media Window)	Depot Only
1a	Media Window (t)	105934-002
2	Feed Switch (t)	105934-004
	LCD Display/Feed Switch (with Bluetooth Wireless)	105934-056
	LCD Display/Feed Switch (with 802.11g Wireless)	105934-057
3	Ribbon Carriage, 300 dpi	105934-018
4	Upper Gap Sensor, Fixed (t)	105934-009
	Upper Gap Sensor, Movable (t)	105934-010
5	Ribbon Out Sensor (t)	105934-046
6	Print Mech. Fixed Sensor, 300 dpi (t) inc. Gap/Blackline Snsr, Motor, Platen, Head Up Snsr	105934-015
6b	Gap/Blackline Sensor, Fixed (t)	105934-045
6	Print Mech. Moveable Sensor, 300 dpi (t) inc. Gap/Blackline Snsr, Motor, Platen, Head Up Snsr	105934-016
6b	Gap/Blackline Sensor, Moveable	105934-044
6a	Head Up Sensor (t)	105934-042
6c	Motor Assy., 300dpi	105934-023
6d	Platen, Std (t)	105934-035
7	Cover Hinge R&L (t)	105934-048
8	GX Main Logic Board, USB/Serial/Parallel	105934-080
8	GX Main Logic Board, USB/Serial/Parallel, XMEM, RTC	105934-081
8a	Back Panel, USB/Serial/Parallel (t)	105934-083
8	GX Main Logic Board, USB/Serial/Ethernet	105934-084
8	GX Main Logic Board, USB/Serial/Ethernet, XMEM, RTC	105934-085
8a	Back Panel, USB/Serial/Ethernet (t)	105934-087
8	GX Main Logic Board, USB/Serial/802.11g Wireless XMEM	105934-091
8	GX Main Logic Board, USB/Serial/Bluetooth Wireless XMEM	105934-092
8a	Back Panel, USB/Serial/Wireless (t)	105934-090
	Interface Fuse, 1A	105934-076
	Battery, 3V Lithium (set of 10)	G105950-003
9	Rubber Foot (set of 4)	105934-024
10a	Front Bezel, Std (t)	105934-030
10b	Front Bezel, Dispenser (t)	105934-031
10c	Medium Duty Cutter (t)	105934-033
11	Printhead, 300dpi (t)	105934-039
12	Nameplate, GX430t	105934-064
	Nameplate, GX430t with LCD	105934-069
	Shipping Pack (t)	105934-051
	Users CD-ROM	105934-052
	Power Supply, 100W C13 with US & Euro Cords	105934-054
	Power Cord, 220V Euro C13 (set of 5)	105950-015
	Power Cord, 240V UK,C13 (set of 5)	105950-030

X. Questions & Answers

How does the G-series differ from my 4-inch 28-series printer?

Mechanically the printer is similar. It provides a dual-walled, robust construction; however, the OpenAccess design has been improved upon to provide a more compact, easier media and ribbon loading system. Electronically, the printer is very different. A new electronics platform provides a wealth of features, including quicker processing, faster print speeds, dual resident programming languages and wireless communication.

Is the G-series available in a 2-inch version?

No. The G-series is the new 4-inch desktop printer. The current 2-inch desktop printers; the 2824 and 2824-Z will be maintained at this time.

What are the main differences between a GK420 and a GX420?

The GX printer offers faster print speeds, extended memory, real time clock, moveable sensor and cutter options, plus parallel and wireless interface options.

When should I direct the customer to buy GX in place of GK?

Many legacy applications can be fulfilled with the appropriate direct thermal or thermal transfer GK printer, but new applications or situations of business improvement might require such features as moveable sensor, cutter, 300dpi resolution or a wireless solution, so this would see a GX printer as the preferred option.

My customer likes the size of GX420d. Can we get 300dpi resolution in this size?

No. The 300dpi option is available in a thermal transfer form factor only.

Can I upgrade a GK420 to a GX420 by simply installing firmware?

No. The two products have completely different main logic boards.

What options and accessories are available for the G-series?

For a complete list of available G-series options and accessories, please consult the G-Series price list.

Are the G-Series printers Windows compatible?

Yes. All G-Series printers include a Windows driver. This driver will allow the printer to be used in conjunction with popular Windows applications, like that of Microsoft® Word™, Excel™, or PowerPoint™. The Windows driver will enable the end user to design labels in their applications of choice for print output directly to the printer. Vista support is available via the appropriate ZebraDesigner driver available to download from our web site at www.zebra.com.

Are the G-series printers compatible with other Zebra printers?

Yes. The G-Series printers have dual resident command language. The co-existent EPL and ZPL allows for seamlessly integration into legacy and current installations. You can swap your older Eltron desktop printers or add to existing applications, including ZPL based mid-range and high end installations.

Can the G-Series printers replace legacy Eltron desktops printers?

Yes. The G-series resident EPL Line Mode and EPL2 means that older Eltron desktop application's code and media handling can be supported.

I need support of EPL Line Mode. Does the G-series support this?

Yes. Direct Thermal G-series; GK420d and GX420d, support the legacy Line Mode of operation.

Can the G-Series printers support Asian fonts?

Yes. The GX printers with extended memory options have various font packs available to them, including Japanese, Chinese, and Korean. Please refer to the printer price list.

What connectivity options are available?

GK printers come as standard with serial and USB as standard. An internal 10/100 Ethernet option is available and will replace the serial port. GX printers come as standard with serial, parallel and USB. Option 10/100 Ethernet and wireless Bluetooth or 802.11g are available, but will replace the parallel port.

How much memory is standard on the G-Series printers?

The G-series printers have 8MB SDRAM and 4MB Flash as standard. The GX printers have an optional 8MB Flash upgrade that also provides a Real Time Clock.

I need support of EPL2, which G-series models have this?

All G-series printer have dual resident languages. The co-existing EPL2 and ZPLII mean that any G-series printer will understand and process either programming language.

Can the thermal transfer units operate in direct thermal mode?

Yes. The GK420t, GX420t and GX430t can operate either with or without a ribbon to achieve both direct and thermal transfer modes of operation.

I would like to upgrade from my old 2742. Will I need different labels?

No. The adjustable media sensor on the GX printers can be positioned to accommodate any media with a centralised registration mark.

Can I use my 27-series ribbons on the thermal transfer G-series?

No. A uni-ribbon format must be used. Please refer to the supplies guide.

Will the Zebra Keyboard Display Unit (KDU) work with the G-Series?

No. A specific adapter is required to support the legacy keyboard. The part number is 105850-026. However, the KDU Plus can be supported without modification.

Do the 2844 and G-series have the same serial port parameters?

No. Whilst both are a DB-9 construction, the serial port pin outs are different. The 2844 uses a straight through serial cable and the G-Series uses a null-modem serial cable. The specific serial cable has a part number of G105950-054 or alternatively, uses the USB that ships with the printer.

Do the G-Series and 28-Series have the same parallel port configuration?

No. The G-series utilize a DB-25 configuration. The specific parallel cable has a part number of 105950-025 or alternatively, uses the USB that ships with the printer.

Is the 10/100 Ethernet option field upgradeable?

No. The internal 10/100 ZebraNet print server is not a field upgradeable options. This configuration must be chosen at the time of purchase.

Can I use my older external ZebraNet 10Base-T print server on the G-series?

No. The parallel port enabled GX printers will not support the external PrintServer II. The recommended migration path would be a GK or GX printer with the faster 10/100 print server option.

Can I get both 10/100 and 802.11g on the same printer?

No. Wired and wireless LAN options are not available on the same unit.

What are the benefits of Bluetooth over 801.11g wireless?

Bluetooth and wireless LAN address different connectivity requirements. 802.11g offers integration into an application's secure network infrastructure at speeds of up to 54Mbps and greater distances to that of the class 2 Bluetooth option. Bluetooth would typically provide a point-to-point solution at a slower data transfer rate of 1Mbps and a maximum distance of 10 meters.

Can my 802.11g printer operate in an 802.11b infrastructure?

Yes. 802.11g is backward compatible, but reduced performance can be expected.

What ships with a G-series printer?

The printer's ship kit contains an Accessories CD, USB cable, Cleaning Pen, pictorial Quick Start guide, plus warranty and registration cards. The contents of the CD include:

- User Manuals
- EPL2 and ZPLII programming manuals
- ZebraNet operators manual
- Spare Parts list
- Zebra Universal Printer Drivers
- ZebraNetBridge utility
- ZebraDesigner label design application