

RTS

Innovating the Future of Global Communications



Intercom Systems

Table of Contents

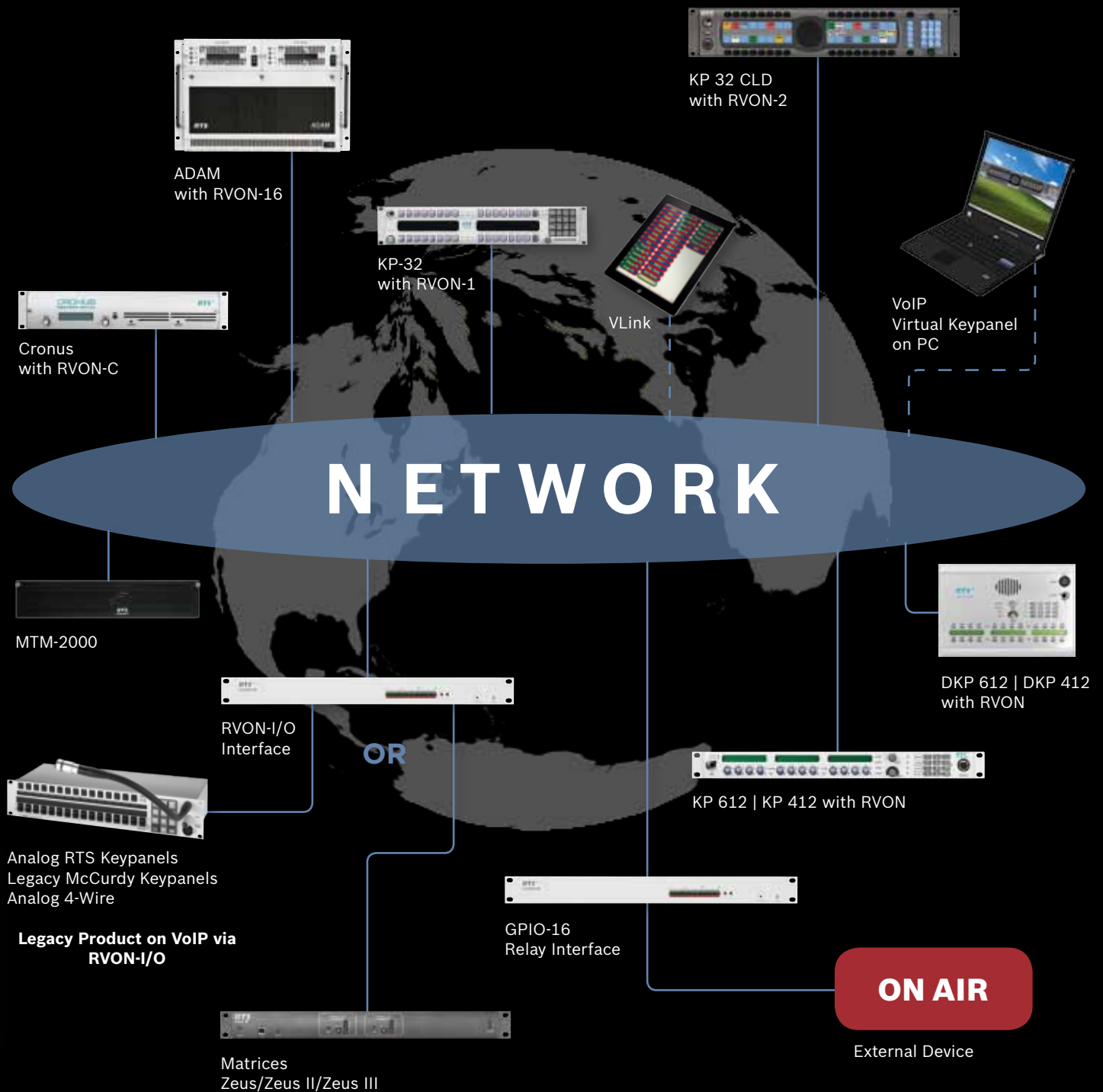
Worldwide Connectivity.....	3
Digital Matrix	4 - 27
Intercom Matrices.....	4
Interface Cards	6
RVON VoIP Devices	7
Tri-Bus Multi-Frame Topology.....	8
Breakout Panels.....	9
Software	10
RTS VLink	12
CLD Color Display Keypanel Series	14
KP-32 Keypanel Series	16
KP 612/412 Keypanel Series.....	18
KP-12 Keypanel Series	20
Value Series Keypanel	22
Trunkmaster Series.....	24
System Peripherals	26
Partyline	28 - 35
Power Supplies	28
Master Station.....	29
User Stations	30
Beltpacks	32
IFB System Peripherals.....	33
Accessories	34
Product Specifications	36
Intercom Headsets.....	38



RTS is an industry leader in the design and manufacture of intercom solutions. From the Advanced Digital Audio Matrix (ADAM) systems used to coordinate major network broadcasts of the world's largest events to small-format systems used for in-house productions, RTS is dedicated to innovating the future of global communications.



Worldwide Connectivity



Intercom Matrices

The RTS family of digital intercom matrices is the most extensive, widely used line of intercoms in the world. From the top-of-the-line ADAM matrix, available in sizes from 16 to more than 1,000 users, to the original Zeus 24-port matrix, RTS matrices are the standard for reliable, mission-critical communications in broadcast, military, industrial, and entertainment applications.



Intercom matrices at a glance:

Attribute	ADAM	ADAM-M	Cronus	Zeus III+	Zeus III LE+
Port Capacity: Single Frame	272 ¹	128 ¹	32	32	16
Rack Units	7	3	2	1	1
Redundant Power Supplies	Yes	Yes	Yes	Yes	Yes
Redundant Controllers	Yes	Yes	No	No	No
Bus Expansion	Yes	Yes	Yes, 4x Cronus, linking license required	No	No
Link Method	Single Mode Fiber or Multi Mode Fiber	Single Mode Fiber or Multi Mode Fiber	Coax/Fiber between Cronus Frames	N/A	N/A
Cable Length	TBX fiber single mode 40 km Multi mode 550 m	TBX fiber single mode 40 km Multi mode 550 m	Coax: 90 m Fiber : 15 km Single mode	N/A	N/A
Audio Bits	24	24	24	24	24
VOX on Input	Yes	Yes	Yes	Yes	Yes
AES Audio	Yes	Yes	No	No	No
Trunking Support	Yes	Yes	Yes	Yes	Yes
Intuitive User Interface	Yes	Yes	Yes	Yes	Yes
Matrix PC Connection	Ethernet, Serial	Ethernet, Serial	Ethernet, Serial, USB	Ethernet, Serial, USB	Ethernet, Serial, USB
Non-Destructive Download	Yes	Yes	Yes	Yes	Yes
Integrated Partyline Interface	No	No	No	Yes (2)	Yes (2)
Remote Configuration	Yes	Yes	Yes	Yes	Yes
Relays	External GPIO-16	External GPIO-16	4	2	2

¹ More with 64-Channel MADI card(s)



ADAM
Advanced Digital Audio Matrix

Using a Time Division Multiplex (TDM) technique, ADAM grows linearly as users are added; the system comes standard with newly redesigned, redundant high-current power supplies. The Ethernet master controller, MCII-E, allows for automatic changeover in the event of failure. With the added convenience of Ethernet connectivity between the ADAM intercom and a PC running AZedit matrix control software, it can support 32 simultaneous AZedit sessions via Ethernet and three sessions via serial.



ADAM-M
3RU Advanced Digital Audio Matrix

The 3RU matrix frame supports eight interface cards, in addition to redundant master controller cards. In keeping with the RTS principle of backward compatible, forward thinking, the ADAM-M is fully compatible with all current ADAM cards, including the MADI-16 Plus. Users now have the option of configuring a very compact frame with RVON, MADI, and analog with full redundancy.

Cronus
DSP Matrix Intercom

RTS Cronus intercom is a modular, 32-port digital matrix intercom in 2RU that can hold up to four AIO analog or RVON-C VoIP cards with eight ports each. Based on advanced DSP architecture, Cronus intercom has the ability to link up to four units into a single 128-port matrix. The Cronus can be preconfigured for fiber with a connection up to 9.3 mi (15 km), or coax for a connection up to 300' (91.4 m). When connected as a single matrix, individual Cronus intercom controls remain autonomous and independent at each matrix for the highest reliability. Cronus is available with an analog card or the RVON-C VoIP card.



Zeus III and Zeus III+
Digital Intercom Matrix

Zeus III is the next generation of compact intercom system units, giving compact systems more options for their intercom configurations. Zeus III has 32 channels in/out and two additional configurable partyline interface channels. Its compact size is perfect for environments with limited space. With integrated Ethernet, Zeus III can be configured from virtually anywhere on the network using AZedit software. Alternatively, Zeus III can be directly connected to AZedit via a USB connector on the front panel. The system has 32 standard RJ45 connectors, making it easier to connect the intercom system with audio lines and keypanels by keeping the RTS wiring scheme. The Zeus III+ contains all of the same features as the Zeus III with the ability to provide the user with redundant AC power supplies for an added level of reliability.



Zeus III LE and Zeus III LE+
Digital Intercom Matrix

Zeus III LE is the further refinement of compact intercom system units, giving compact systems more options for their intercom configurations. Zeus III LE has 16 channels in/out and two additional configurable partyline interface channels. Its compact size is perfect for environments with limited space. With integrated Ethernet, Zeus III LE can be configured from virtually anywhere on the network using AZedit software. Alternatively, Zeus III LE can be directly connected to AZedit via a USB connector on the front panel. The system has 16 standard RJ45 connectors, making it easier to connect the intercom system with audio lines and keypanels by keeping the RTS wiring scheme. The Zeus III LE+ contains all of the same features as the Zeus III LE with the ability to provide the user with redundant AC power supplies for an added level of reliability.



Interface Cards

RTS interface cards are the core of the modular digital matrix intercom concept. An array of features and connectivity options allow users to customize their ADAM matrix to integrate seamlessly into a cohesive communication network. Each new generation provides expanded possibilities for existing ADAM frames, solidifying its investment value for years to come. With features such as hot swap and user allocated ports, the ADAM subassemblies ensure that users can scale their intercom systems to fit their growing needs with peace of mind.

MCII-E

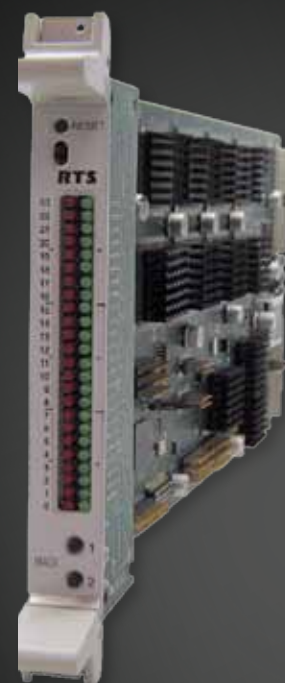
Ethernet Master Controller
Card Kit for ADAM

The Ethernet connectivity of the MCII-E enables multiple AZedit sessions and remote peripherals, such as the GPIO-16 (page 26). Adding Ethernet connectivity between the ADAM intercom and a PC running AZedit matrix control software, the new controller can support up to 35 simultaneous AZedit sessions. Using a pair of MCII-E controller cards provides full redundancy with seamless automatic changeover upon failure. The MCII-E also supports SNMP, the IETF standard protocol for monitoring network-attached devices.

MADI-16 Plus

Multichannel Audio
Digital Interface Card

The MADI-16 Plus card expands the ADAM system configuration capabilities by utilizing MADI (Multichannel Audio Digital Interface) technology to connect any AES-10 compliant devices over coaxial or fiber connections at sampling rates of 44.1 kHz and 48 kHz. Unlike the RVON devices, the MADI-16 Plus has a point-to-point configuration, which provides for little or no delay in the transmission of audio across lines.



Interface Card Comparison

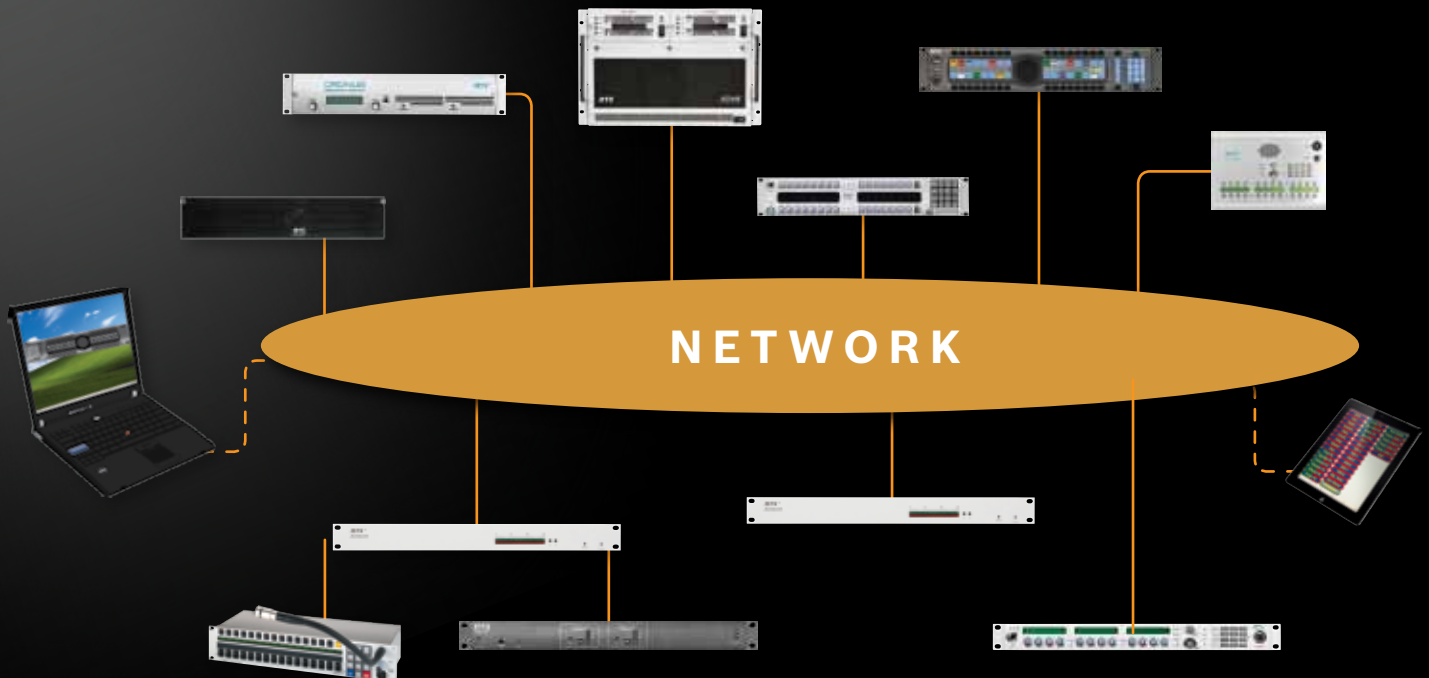
Card	Frames	Functionality	Backcard Connectors
AES-3	ADAM	Digital Audio Interface	Supports eight audio channels through eight AES-3 connections via BNC coax.
AIO-16	ADAM Series	16-Port Analog I/O	Provides 16 ports of audio in and out via MDR and 50-pin SCSI, plus individual data drivers
Cronus-AIO	Cronus	8-Port Analog I/O	Provides 8 ports of audio in and out via RJ-12 or MDR
MADI-16 Plus	ADAM Series	16–64 Port MADI	Connects any AES-10 compliant devices over coaxial or fiber connections
MCII-E	ADAM Series	Ethernet Master Controller	Connects to AZedit matrix control software via Ethernet
RVON-16	ADAM Series	16-Port VoIP	Connects ADAM to panels and/or audio tielines over standard IP networks
RVON-C	Cronus	8-Port VoIP	Connects Cronus to panels and/or audio tielines over standard IP networks
TBX-Tribus	ADAM Series	Triple-Bus Expander	One card Links up to four ADAM frames together

RVON VoIP Devices

The RTS Voice Over Network (RVON) series allows the full integration of our intercom system into your existing data network. It also allows you to create an independent network for your RVON equipment. Our devices are fully IP-compliant with current VoIP standards. All RVON series devices can be monitored via SNMP. The RVON product family supports ancillary data control for use with RTS intelligent trunking. These products enable trunking over IP for local to worldwide connectivity.

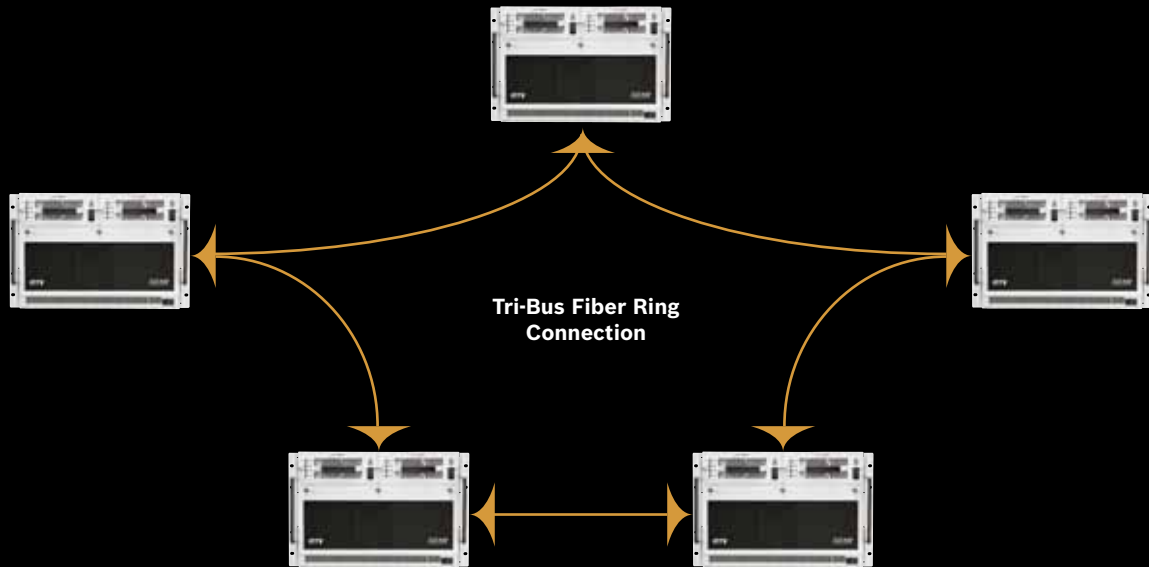
VoIP Interface	Device	Functionality
RVON-1	KP-32 KP x12 DKP x12	Single Channel VoIP Interface
RVON-2	KP 32 CLD KP 12 CLD DKP 16 CLD	2-Channel VoIP Interface for CLD Keypanel Series
RVON-16	ADAM Series	16-Port VoIP Card Kit
RVON-C	Cronus	8-Port VoIP Card Kit
RVON-I/O	Analog Devices	8-Port VoIP Analog Interface
VKP	PC Client	Virtual Keypanel

RVON Diagram Example

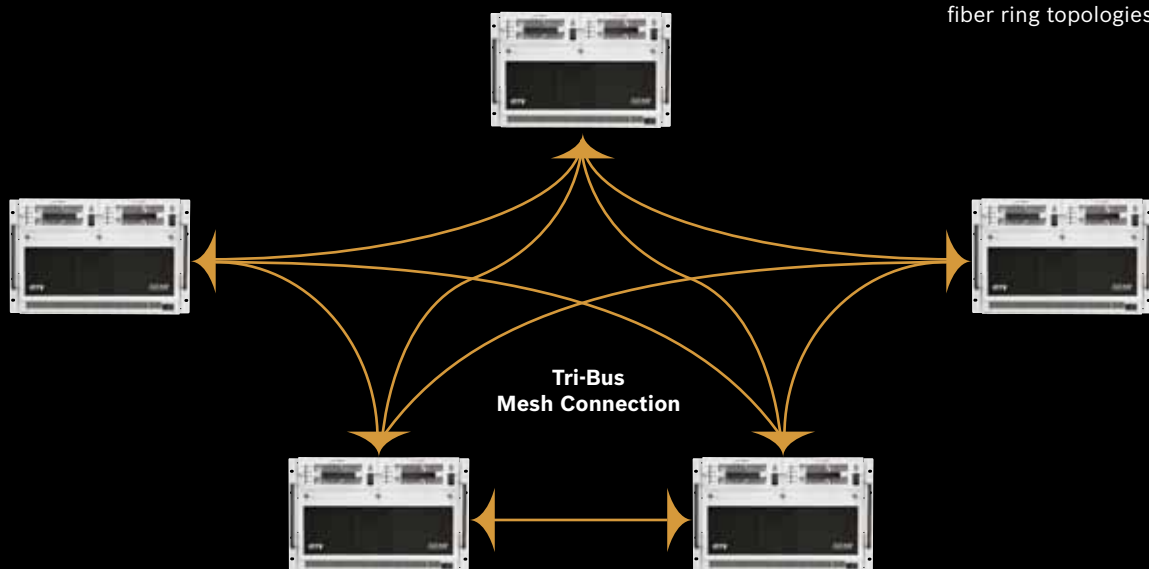


Tri-Bus Multi-Frame Topology

The RTS systems Tri-Bus technology provides the end user with a wide variety of system expansion options. The Tri-Bus expander supports both a dual fiber ring or a robust mesh architecture for added redundancy. Whether your communication needs call for a distributed topology or centralized design, the Tri-Bus expansion card can meet the challenge.



The RTS Tri-Bus card supports both traditional mesh and fiber ring topologies.



Breakout Panels

Breakout panels provide a convenient way of expanding the port capacity of ADAM intercom systems. There are eight breakout panels for use with the AIO cards: XCP-32-DB9, XCP-16-DB9-T, XCP-48-RJ45, XCP-48-TELCO, XCP-40-DB9, XCP-40-RJ11, XCP-955, and XCP-24.



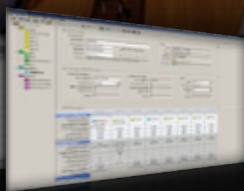
Breakout Panel Comparison

Panel	Frame	Back Card	Connectors
XCP-955	ADAM/ADAM-M	Telco	(25x) RJ-12
XCP-954-48	ADAM/ADAM-M	Telco	(48x) DB-9
XCP-32-DB9	ADAM/ADAM-M & Cronus	MDR	(32x) DB-9
XCP-16-DB9-T	ADAM/ADAM-M & Cronus	MDR	(16x) DB-9
XCP-48-RJ45	ADAM/ADAM-M & Cronus	MDR	(48x) RJ-45
XCP-48-Telco	ADAM/ADAM-M & Cronus	MDR/Telco	(6x) Telco
XCP-40-DB9	ADAM/ADAM-M	SCSI	(40x) DB-9
XCP-40-RJ11	ADAM/ADAM-M	SCSI	(40x) RJ-12
XCP-24	ADAM/ADAM-M	SCSI	(3x) Telco
XCP-ADAM-MC	ADAM/ADAM-M	SCSI	(10x) DB-9, (1x) DB25

Software



RestrictEdit
Access Management
Software



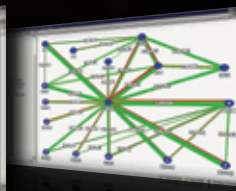
RVONedit
Configuration
Software for RVON
Devices



AZedit
RTS Matrix Control
Software



TES
Trunk Edit Software



TSS
Trunk Supervisor
Software

AZedit

Intercom system configuration has never been easier with the advent of AZedit matrix control software. AZedit is a Windows-based, full-featured configuration software, providing online and offline configuration capabilities. It gives you the ability to manage multiple intercom systems, assign and reassign users to different ports, as well as dynamically add intercom hardware to your system setup without jumper changes, rewiring, or taking the system offline. AZedit has the capability to load pre-set configuration files, which means saved configurations can be uploaded to the live application at anytime without interruption. AZedit can be used as a monitor tool to observe the status of features, such as gain and crosspoint settings, keypanel keys activated, and other aspects of the system. AZedit can run in multiple sessions using the MCII-E ADAM master controller to allow for remote system configuration. AZedit is updated regularly to provide users with the latest features and innovations available.



RTS software provides complete control over your intercom system from any standard Windows computer. Configure keypanel settings, assign user rights, and even link matrices together that are thousands of miles away.

The RTS VoIP Virtual Keypanel (VKP) is a Windows-based application that allows any user to have a fully functioning RTS digital matrix intercom user station on their PC.

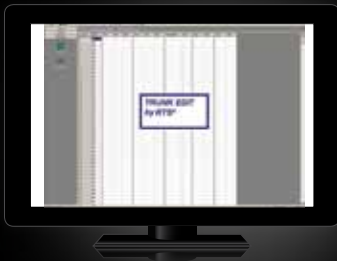


RestrictEdit

RestrictEdit is a tool to create restriction files for use with AZedit software. Restriction files allow administrators to manage user access to resources and features. AZedit includes support for user restrictions by reading a text file (the restrictions file) and parsing out the set of resources and features available to each user.

RVONedit

RVONedit is a Windows-based GUI application for configuring and displaying RVON devices connected to your matrix system. RVONedit is to VoIP products as AZedit is to ADAM, Cronus, and Zeus. An enhanced version of RVONedit is available, which can configure multiple RVON devices simultaneously.

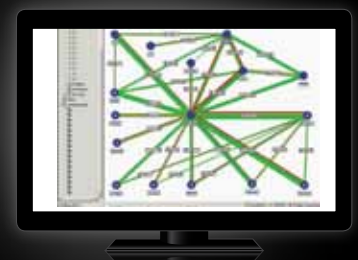


TES

TES is a GUI for programming TM-2000 or MTM-2000 trunking devices. TES allows the user to set up all necessary parameters required for trunking multiple intercom systems. Each intercom system can be configured to work together as a virtual-integrated, single intercom system while still maintaining each individual system's autonomy.

TSS

TSS is a trunking system management application. The program allows for real-time monitoring of trunk line status information. When used in combination with the RT-2M test set, it allows for fully automated testing of a trunked system. If a trunk line is found to be out of specification, the trunk line can be pulled out of service until the issue is resolved. The program also has the capability of remote notification of user defined alarm events.



RTS VLink

RTS VLink is a new, fully interconnected software application that enables remote users to interface with RTS matrix intercoms, allowing an unprecedented degree of control and flexibility from anywhere in the world.

The RTS VLink system provides intelligent trunking links into an RTS intercom matrix to provide full support for RTS intercom alphas and matrix access for standard communications workflows.

RTS VLink represents the only fully interconnected, DHCP-compliant virtual communications solution on the market today for a major hardware-based intercom communications system.

Features of the RTS VLink

- **Anywhere, Anytime Access** – The perfect solution for users that need secure, intelligent access to their RTS matrix from any location.
- **Flexible Configuration** – Scale the system to any number of ports (initial system of eight ports with two-port expansions available). Purchase only the capacity you need.
- **Full Integration into RTS Matrix Intercom Systems** – Allows full mapping of all intercom alphas.
- **Fully DHCP Compliant** – Operates over open Internet connections. Secure access can be employed with a standard VPN connection.
- **SIP Support** – Full SIP support, to and from the matrix.
- **Flexible Connectivity** – Provides a variety of connection methods, including MAD1, analog, or Firewire connections.
- **True Mobility** – Access an RTS matrix via the Internet, using a WiFi/3G/4G connection.





Access Your RTS Intercom Matrix
Anywhere, Anytime

CLD Color Display Keypanel Series

The CLD series represents the latest generation of RTS keypanels. The panels sport advanced features that take flexibility and ease-of-use to the next level. CLD keypanel series feature a revolutionary customizable GUI in integrated full-color TFT displays. The CLD panels' advanced functionality is wrapped in a sleek, ergonomic design with a contoured bezel that fits flush within a rackmount configuration and looks great on the desktop.



Features of the CLD Keypanel Series

- **Full-Color TFT Display** – The TFT color display hosts a rich and intuitive GUI that allows each type of function to be assigned a unique color.
- **Modern, Modular Design** – The rackmount CLD keypanel's flush front panel is ergonomically designed to fit easily into any control room or truck application. The back panels are optimized for future expansion.
- **Multi-Directional Keys** – Multi-directional keys are used for talk, listen, and emulation of traditional level control function.
- **Enhanced Features**– The CLD keypanels support industry leading features, such as up to six auxiliary inputs, three relays, independent digital gain control for microphone sources, and configurable audio routing.
- **DSP** – Acoustic Echo Cancellation, Equalization, Mixing, Filtering, and Metering.
- **User-Programmable Buttons** – User-programmable buttons provide custom shortcuts to menu functions.
- **Key Sequence Options** – CLD keypanel series can be ordered with the new CLD key sequences and button screening, or the classic key sequences and button screening configured for the backlit numeric keypad.
- **Future Expansion** – Designed to allow for an expansion panel and optional connections to the matrix through current and future standard transmission formats.

KP 32 CLD

32-Position Color Display Keypanel



EKP 32 CLD

Color Display Expansion Panel



KP 12 CLD

12-Position Color Display Keypanel



DKP 16 CLD

Color Display Desktop Keypanel



CLD Series Accessories

Accessory	Panel	Functionality	Features
DKP 16 CLD RC	DKP 16 CLD	Rear Connector Kit	5 AUXs, 3 relays, 4 opto Inputs, headset, 2 OC outputs, foot SW, mic in/out, speaker
KP 12 CLD RC	KP 12 CLD	Rear Connector Panel	3 AUXs, 3 relays, 4 opto inputs, headset, 2 OC outputs, foot SW, mic in/out, LCP, EXP, frame, VoIP
KP 32 CLD RC	KP 32 CLD	Rear Connector Kit	6 AUXs, 3 relays, 4 opto inputs, headset, foot SW, speaker, 2 OC outputs, mic in/out
LCP 16 CLD	KP 32 CLD	Level Control Panel	Provides direct knob access to the volume levels of AUX, sidetone, speaker, headset, and other functions of the KP 32 CLD
RVON-2	KP 32 CLD DKP 16 CLD KP 12 CLD	VoIP Interface	Two channels of audio in and out, Ethernet compatible

KP-32 Keypanel Series



The RTS KP-32 family of keypanels offers an unbeatable match of features, options, and performance. Available in four-, six-, or eight-character models, RTS is the only intercom manufacturer to give YOU the choice of any or ALL of these standards. KP-32 panels feature contemporary styling and extensive programmability for unprecedented function and performance. Each of the models is 2RU high. The KP-32 family of DSP keypanels provides all the functionality of the KP-12 series and adds significant features, such as DSP for mixing and audio control. Depending on the model selected, the keypanel may provide from 16 to 32 keys with four-, six-, or eight-character alphanumeric displays on fluorescent or high-contrast LCD backlit displays. KP-32 series keypanels feature a standard mic connector and offer a variety of standard headset connector options to help ensure seamless compatibility with your system.

The RTS KP-32 keypanel fits in a standard 19" rack and is 2RU high. It has 32 lever keys: 30 keys are for intercom talk/listen assignment, one for call waiting response, and one for headset/microphone/program selection and volume setup. KP-32 combines all of the programmable features of the KP-12 keypanel. The KP-32 features DSP and binaural headset operation with left/right assignment of audio signals. It also has large, super-bright, long-life fluorescent displays with adjustable brightness control, making it suitable for all types of ambient lighting. The KP-32 RC audio board with GPI option is available for KP-32 series keypanels.



KP-32

32-Position, 4-Character Keypanel



KP-632

24-Position, 6-Character Keypanel

KP-832

20-Position, 8-Character Keypanel

KP-32/16

16-Position, 4-Character Keypanel

EKP-32

32-Position, 4-Character Expansion Panel



KP-32 Series Accessories

Accessory	Panel	Functionality	Features
KP-32 RC	KP-32	Rear Connector Kit	2 line-level audio inputs, unswitched balanced microphone preamplifier output, headset, speaker output, foot switch input, GPIO, 4 opto-isolated inputs, 2 open-collector outputs, 2 SPDT relay outputs
LCP-32/16	KP-32 Series	16-Position Control Panel	Provides direct knob access to individual listen level controls for operator convenience.
RVON-1	KP-32	VoIP Interface	One channel of audio in and out, Ethernet compatible

KP-612 and KP-412 Keypanel Series



The RTS KP-612 and KP-412 are 12-position keypanels available in pushbutton or lever-key versions. The keypanels fit in a standard 19" rack and are 1RU high each. Additional desktop versions are available. The KP-612 and KP-412 feature two encoders. One encoder is used for headset, microphone, auxiliary input, and matrix in volume adjustment. The other encoder knob is used for menu selection. The KP-612 and KP-412 keypanels have standard numerical keypads with four extra keys: mic mute, user assignable button, page up, and page down keys. The keypanels feature state-of-the-art audio processors and drivers. The KP-612 features a 6-character display, and the KP-412 features a 4-character display. Options are available to connect to RVON (RTS Voice Over Network).

KP-612

12-Position, 6-Character Keypanel

KP-412

12-Position, 4-Character Keypanel

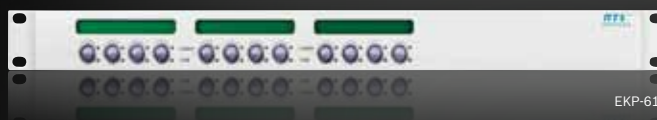


EKP-612

12-Position, 6-Character Expansion Panel

EKP-412

12-Position, 4-Character Expansion Panel



EKP-612-16

16-Position, 6-Character Expansion Panel

EKP-412-16

16-Position, 4-Character Expansion Panel

DKP-612

2-Position, 4-Character Desktop Keypanel

DKP-412

4-Character Desktop Keypanel



DKP-612

Which keypanel series is right for you?

Feature	CLD	KP-32	KP x12	KP-12	Value
Display	Full-Color TFT	Monochrome LCD	Monochrome	Monochrome LCD	Monochrome Call Waiting Window
Alpha Characters	4, 6, or 8 Locally Configurable	4, 6, or 8	4 or 6	4	4
Character Sets Supported	English, Kanji, Katakana, Cyrillic	English, Katakana, Cyrillic	English, Kanji, Katakana	English, Katakana, Cyrillic	English
Mounting	Rackmount, Desktop	Rackmount	Rackmount, Desktop	Rackmount, Desktop	Rackmount, Desktop, Tektronix WFM, Wallmount
Key Type	Lever Key	Lever Key	Lever Key or Pushbutton	Lever Key or Pushbutton	Lever Key
Color	Black/Grey Duotone	Black or Grey	Black or Grey	Black or Grey	Black or Grey
Keypanel Cable Length	Total 10,000 ft per port, unlimited with RVON VoIP.				
Local XPT Level Control	Yes, Integrated into Key	Yes	Yes	Yes	
Pages on Panel	8	8	8	8	4



KP-12 Keypanel Series



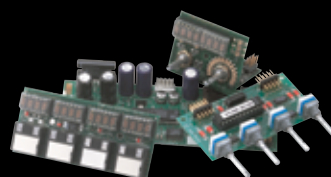
The KP-12 modular series of keypanels represents the ultimate in compact, fully-programmable user stations. Based on a common set of internal modules (modules also available separately for custom designs), the KP-12 series has a common set of very powerful features, which makes each model attractive in mobile applications and in other situations where space is limited. Available in lever-key and pushbutton versions, the basic KP-12 provides a menu-driven, fully programmable, 12-key user station in 1RU of space. Expansion panels and level control panels round out the offerings in the rackmount form factor. Desktop and Tektronix WFM 3RU form factor units are also available.

- Extremely long-life, high-visibility, green alphanumeric LEDs.
- Fully programmable menus selected via front-panel shaft encoder.
- Lever-key versions provide individual talk/listen functions on each key.
- Pushbutton versions provide individually assignable talk, listen, or talk/listen function on each button.
- All keys assignable for all functions (point to point, IFB, ISO, PL, SL, relay, GPI).
- Removable, optional MCP-90 series gooseneck microphone.
- Universal power supply for 100–240 VAC, 50/60 Hz operations.
- Optional rear connector and GPI options available for rackmount panels.
- Wide range of keypanels and expansion panels for specific applications.

KP-12 Series Accessories

Accessory	Panel	Functionality	Features
KPM-CK	KP-12	Rear Connector Kit	Mic in/out, EXT line in, headset, speaker
KPM-I/O	KP-12	GPI Option Kit	4 optos, 2 OCs, 2 relays

The extremely compact modular circuit boards used in the KP-12 line of products are available in kits including the circuit boards, interconnect wiring, switches, etc. for those applications where a custom enclosure or mounting is required.



KP-12
12-Position Keypanel



EKP-20
20-Position Expansion Panel



LCP-20
20-Position Level Control Panel

LCP-12
12-Position Level Control Panel



DKP-12
12-Position Desktop Keypanel

DKP-8
8-Position Desktop Keypanel



KP-8T
Keypanel for Tektronix WFM Mounting



Value Keypanel Series



The RTS value keypanel series is ideal where simplicity of operation and cost are paramount. The keypanels share a common set of features across the entire family. The alphanumeric call waiting window is used for scrollable access to all ports, PLs, ISOs, IFBs, etc. and to check and make key assignments. Keys may be assigned to any intercom function including talk, listen, talk/listen, relay, PL, ISO, IFB, and SL. All models use the optional RTS MCP-90 series gooseneck microphones. These keypanels are ideal for use with the Zeus series intercom matrices, but (like all RTS digital matrix intercom keypanels) are compatible with all RTS matrices, past and present. The RTS value keypanel series provides a scribble strip for key identification.

Kaplin Medical Education Services Uses RTS to Link Their Exam Rooms

Kaplin Medical Educational Services of Newark, NJ uses an RTS Zeus-based system to communicate between 12 examination rooms, two wireless proctors, and a 3-position control/monitor center. A team of licensed physicians located in the control room monitor and evaluate student physicians in the exam rooms on various medical practices and procedures via small, ceiling-mounted video cameras and an intercom station. If assistance is required, the student contacts the control room via a wallmounted WKP-4 station. Based on the situation, the licensed physician, using an MKP-12 station, either talks the student through the problem or contacts a roving proctor. The roving proctor, using an RKP-4 wireless 4-channel belt-pack, talks with the control room, the exam room, and/or a second roving proctor to resolve the problem.



The WKP-4 is designed for wallmounted applications. Perfect for use in commercial sound and industrial settings, the WKP-4 is compatible with the RTS U-Series flush-mount box. Flush-mounting into consoles, custom enclosures, and walls is a snap. The WKP-4 requires 15-24 VDC at 1 amp.

MKP-4

4-Position Rackmount/Desktop Keypanel

MKP-12

12-Position Rackmount Keypanel

BKP-4

4-Position Desktop Keypanel



MKP-4

WKP-1

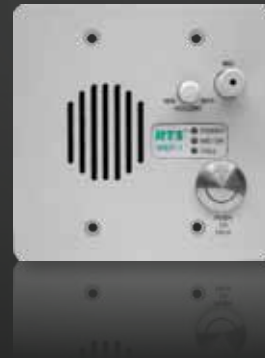
1-Position Wall Keypanel

TKP-4

4-Position Keypanel for Tektronix WFM Mounting

WKP-4

4-Position Wall Keypanel



WKP-1

Keypanel Comparison

Feature	MKP-12	MKP-4	BKP-4	WKP-4	TKP-4	WKP-1
Keys	12	4	4	4	4	1
Mounting	Rackmount or Desktop	Rackmount (with MCP mounting kit) or Desktop	Desktop	Wallmount	Tektronix WFM	Wallmount
Call Waiting Window	4 Characters	4 Characters	4 Characters	4 Characters	4 Characters	N/A
Cost Effective	Yes	Yes	Yes	Yes	Yes	Yes
Headset Jack	XLR-4F	XLR-4F	XLR-4F	XLR-4F	XLR-4F	N/A
Mic Jack	¼" TRS	¼" TRS	¼" TRS	¼" TRS	¼" TRS	Integrated Mic
Speaker	Integrated	Optional MCS-325	Integrated	Integrated	Integrated	Integrated

Trunkmaster Series

RTS trunkmasters are your own private version of a long distance telephone system, allowing users of two or more (up to 31) separate matrices to communicate with one another instantaneously and seamlessly with all the same presets, scroll lists, and tallies available on local matrices. Whether the systems are located in adjacent studios or on different continents, intelligent trunking unifies your unique communication needs.

The RTS trunking system consists of RTS model TM-2000 or MTM-2000 trunkmaster and one or more RTS ICP-2000 interconnection panels, depending on the number of intercom systems to be trunked. A backup TM-2000 may also be added to prevent downtime in the event of a failure of the main master control unit. Each trunkmaster comes prepared to trunk eight matrices and can scale up to 31 matrices.

TM-2000

Trunkmaster for up to 31 matrices



MTM-2000

Mini Trunkmaster for up to 16 matrices



ICP-2000

Interconnect Panel



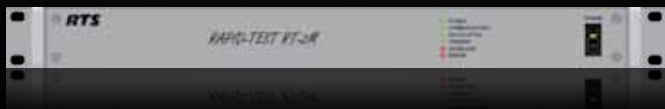
SWP-2000

Redundancy Switch Over Panel



RT-2M & TSS

Trunking Supervisory Test System

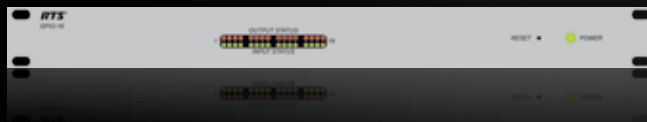


System Peripherals

GPIO-16

General Purpose Interface

The GPIO-16 interface provides 16 opto-isolated inputs and 16 relay outputs. It connects to the matrix via serial or Ethernet for remote operations.



MDA-100

Mixing & Distribution Amplifier

The MDA-100 contains an 8 x 1-summing amplifier (mixer) and a 1 x 8 distribution amplifier.



SIP-ISDN

SIP Telephone Interface

The SIP-ISDN has support for the SIP protocol and incorporates an ISDN basic rate interface (1x S0/2 Lines) and a LAN interface.



TIF-4000

12 Line Telephone Interface

The TIF-4000 provides bidirectional communication between the intercom matrix and an analog telephone line.



TIF-2000A

Single-Line Telephone Interface

The TIF-2000A provides bidirectional communication between the intercom matrix and a standard analog telephone line.



LCP-102

Level Control Panel

The LCP-102 functions as an analog trim panel, used to either adjust input/output gains, partyline assignments, or program assignments for IFBs.



PAP-32

Program Assignment Panel

The PAP-32 enables routing of program sources to IFB destinations.



PAM-32

Program Assignment Monitor

The PAM-32 has 30 keys for monitoring inputs, one key for scrolling alpha assignments, and one for headset/speaker selection.



DSI-2008

Digital System Interface

The DSI-2008 interfaces two 2-wire intercom lines to two 4-wire lines, and also interfaces balanced and unbalanced 2-wire lines. Digital hybrids eliminate all nulling and ducking adjustments. It puts an end to concerns about echo and feedback when interfacing 2-wire lines.



SSA-324

System-to-System Adapter

The SSA-324 interfaces two 2-wire intercom lines to two 4-wire lines, and also interfaces balanced and unbalanced 2-wire lines. The SSA-324 is ideal for steady load applications.



Power Supply

Power supplies are the heart of partyline intercom systems. They supply operating voltage to belt packs and many user stations. Unique, short-circuit reset circuitry design, and unparalleled mechanical engineering ensures reliable, trouble-free operation for years to come. With all of the things you have to worry about, power supplies should not be one of them.



PS-20

Power Supply

The PS-20 is the latest power supply. The PS-20 features 2- and 4-channel operation, RTS monitoring, 2-channel program input, audio linking, and 3-mode operation: RTS 2-channel, RTS 4-channel, and Clear-Com mode. It also has double the power output per channel of previous RTS power supplies, which will substantially increase the number of user stations and belt packs that can be connected.

The PS-20 features two channels of communication where both channels are "wet," meaning there is power on each channel (RTS 2-channel mode). In RTS 4-channel mode, the audio signals and DC exist on the same wire. The PS-20

can also be switched into Clear-Com mode. The PS-20 has a 3-pin XLR (male) connector on the front of the system, where a RTS user station can connect and monitor activity on either or both channels. A single PS-20 power supply has 1.8 amps per channel, which means the user can power up more stations. If additional user stations or belt packs are needed, two PS-20s can be joined together to double the power capability. A pair of standard stereo plug connectors are available on the back of the power supply to connect two PS-20s through audio linking as well. The 3-pin XLR female program input connector can be used to send audio to both CH 1 and/or CH 2.



Master Station

RTS two-wire intercom master stations have been the industry standard for professional partyline communication systems for more than 25 years. With their flexible configurations, ease of use, and legendary reliability, they are the elite core communications control tools.

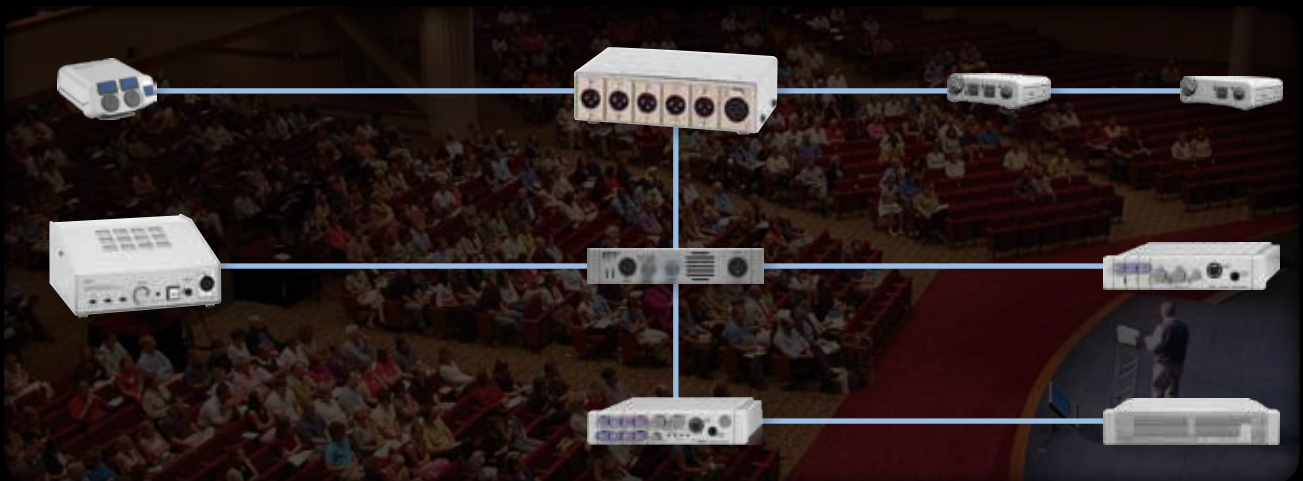
RTS two-wire intercom master stations are installed in major broadcast and industrial application venues worldwide.



MCE-325

2- or 4-Channel User-Programmable Master Station

The MCE-325 is a 4-channel, programmable intercom station. It may be used as a headset station or, with the addition of the MCS-325 modular speaker, as a speaker station. It may be mounted in a console or equipment rack via optional mounting kits. The MCE-325 can be used with either 2-wire or 4-wire intercom lines, or a combination of both. The MCE-325 can be interfaced to a variety of external devices, including external program sources, two-way radios, paging systems, and satellite circuits. The MCE-325 can be ordered for 4- or 5-pin operation.



RTS Two-Wire Partyline System

User Stations

RTS two-wire intercom user stations employ a unique modular design that enables a few station types to be configured into a multitude of communications solutions. Rugged and dependable RTS two-wire intercom user stations form the widest variety of stationary communications stations in the industry. RTS two-wire intercom user stations are the perfect choice for a wide range of applications regardless of what physical profile is required. RTS is the only two-wire protocol that allows two communication channels to be connected on a single standard microphone cable.

MRT-327 User Station

The model MRT-327 is a 2-channel intercom station for use in RTS two-wire intercom systems. It may be used as a headset station or as a speaker station (with an optional MCS-325 modular speaker listed on page 34). The MRT-327 may be installed in optional console or rackmount configurations. The MRT-327 can be ordered for 4- or 5-pin operation.



RM-325 User Station

The RM-325 is a 2-channel binaural headset station. Features stereo (split-feed) operation, microphone limiter circuit, two powerful headphone amps, and simplified operational controls, including individual volume adjusts. Packaged in ½-rack by 1RU metal housing for added durability.



SPK-300L Portable Desktop Speaker User Station

The SPK-300L is a desktop station with built-in speaker. It can be used as a “public” listen box via built-in speaker or privately through the headset connection. Features a channel-select switch, call light, speaker on/off switch, and dual-purpose portable desktop volume control. Packaged in a rugged, all-metal housing perfect for table-top operation.



CM-300L Console-Mount User Station

Two-channel select, console-mount user station. Features a microphone limiter circuit, separate dynamic and carbon microphone inputs, and a silent channel select switch. Solid metal front and open back for console mounting.



WM-300L

Wallmount User Station

Two-channel select, wallmount headset station. Features channel select switch, call light, and headset volume control. Fits in standard two-gang outlet box.



WMS-300L

Dual-Channel Wallmount User Station with Speaker

Two-channel select, wallmount speaker user station. Features channel select switch, call light, and a speaker on/off switch. Fits in standard four-gang outlet box.



Which user station is right for you?

Feature	MRT-327	RM-325	SPK-300L	CM-300L	WM-300L	WMS-300L
Keys	Pushbutton	Pushbutton	Toggle Switch	Toggle Switch	Toggle Switch	Toggle Switch
Mounting	Rackmount or Desktop	Rackmount or Desktop	Desktop	Console-Mount	Wallmount	Wallmount
Speaker	MCS-325	N/A	Internal	N/A	N/A	Internal
Call Light	Yes	Yes	Yes	Yes	Yes	Yes
Power Consumption						
Quiescent	45 mA ±10%	60 mA ±10%	10 to 40 mA	23 mA ±10%	10–40 mA ±10%	10–40 mA
Operating 25Ω Phones	75 mA ±10%	100 mA ±10%	50 mA	37 mA ±10%	50 mA	50 mA
Operating 25Ω Phones + Call Light	90 mA ±10%	125 mA ±10%	70 mA	60 mA ±10%	75 mA	70 mA
Operating 8Ω Speaker	240 mA ±10%	300 mA ±10%	100 mA			100 mA
Operating 8Ω Speaker + Call Light	300 mA ±10%	360 mA ±10%				

Beltpacks

Using the latest in space-age materials, RTS two-wire intercom beltpacks are mechanically engineered to be rugged and dependable. Unique audio circuitry is perfect for either high- or low-noise environments while maintaining maximum voice intelligibility.



BP-325

Dual-Channel Binaural Programmable Beltpack

The BP-325 is a portable beltpack for use with RTS two-wire intercom systems. The BP-325 is a binaural (stereo), programmable 2-channel beltpack with program-input capability. For use with a dynamic microphone only. The BP-325 consumes 65 to 85 mA of power.



BP-351

Dual-Channel Portable Metal Beltpack

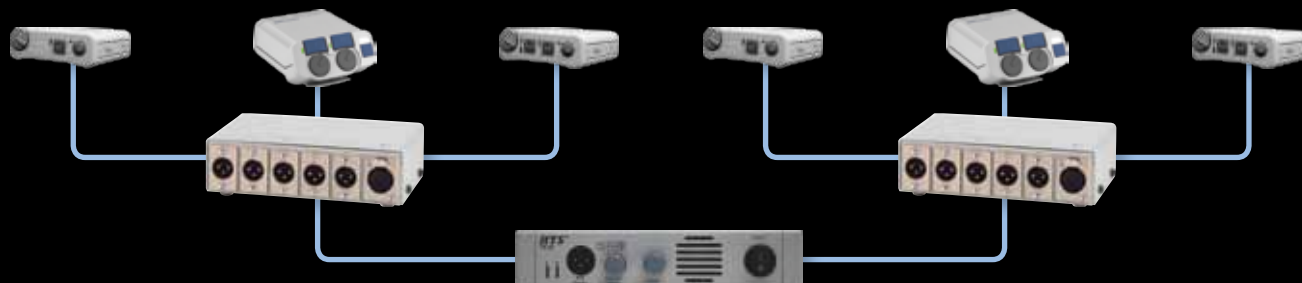
The BP-351 is a portable beltpack for use with RTS two-wire intercom systems. The BP-351 is a microprocessor controlled 2-channel select intercom beltpack. The BP-351 has connections for headset/earset microphones (dynamic or electret). The beltpack has an autosensing function that automatically detects the headset mic and powers it if the mic is electret. The BP-351 consumes 45 to 70 mA of power.



BP-319

Single-Channel Portable Metal Beltpack

The BP-319 is a portable beltpack for use with RTS two-wire intercom systems. The BP-319 is a microprocessor controlled one-channel intercom beltpack. The BP-319 has connections for headset/earset microphones (dynamic or electret). The beltpack has an autosensing function that automatically detects the headset mic and powers it if the mic is electret. The BP-319 consumes 45 to 70 mA of power.



IFB System Peripherals

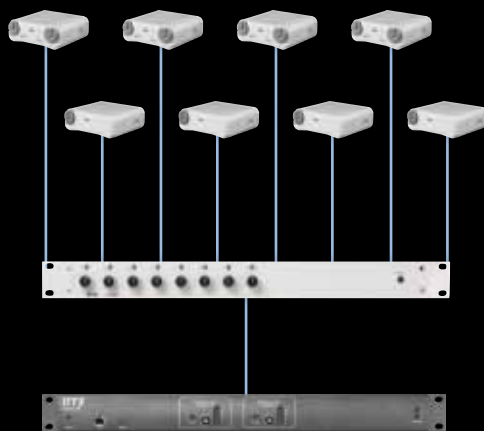
Interrupt Fold Back (IFB) is a broadcast term used to describe the process of cueing on-air talent. RTS IFB equipment is designed with a modular approach that meets the needs of not only large television networks, but can also be configured for any one-way communication needs. With multiple program audio sources and individual or simultaneous interrupts, the RTS series of IFB and ISO products is perfect for any talent-cueing need.

The **4010** is a central IFB electronics station. It contains all necessary control functions and electronics, including line power, to provide an active link between the 4001, 4002, and 4003 control stations and the 4030 and IFB-325 user stations.

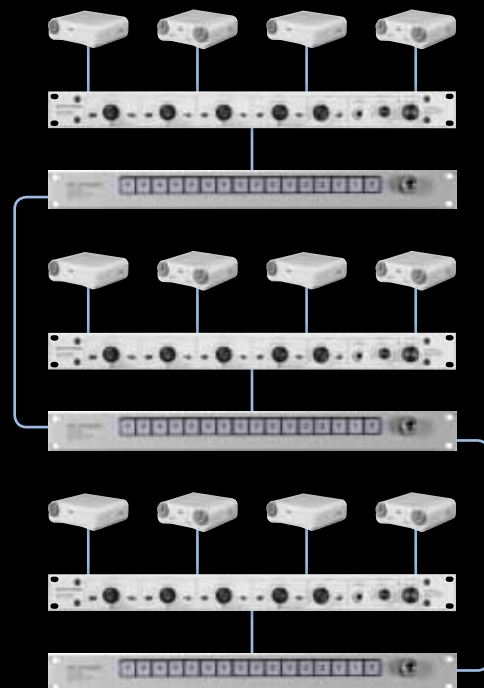
The **IFB-828** interfaces up to eight 4030 or IFB-325 beltpacks to any RTS digital matrix intercom system and provides power to the beltpacks. The IFB-828 may also be used as a simple program interface to feed two separate program sources to each of eight 4030 beltpacks (16 program sources to eight beltpacks total).

The **4030** and **IFB-325** are listen-only beltpacks with two and one channels, respectively. The 4030 contains electronics to provide a stereo audio signal to the user. The IFB-325 provides a mono (either interrupt/non-interrupt selected via 4010) audio signal to the user. The 4030 and IFB-325 feature volume controls in extruded aluminum cases. For earset options see page 38.

The **4001**, **4002**, and **4003** are IFB control stations with four, eight, and 12 channels, respectively, thus the control stations separate talent feeds per channel plus one Stage Announce send. The control stations feature two distinct audio sends per IFB channel for interrupt/non-interrupt or multiple program feeds. Each unit has illuminated switches, supports four priority levels, and a gooseneck mic connector. An optional rack kit is also available. Requires one 4010 central IFB. 4001 and 4002 are not displayed.



Digital Matrix IFB System



Partyline IFB System

Accessories

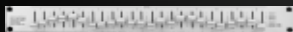
RTS offers a full line of products to complete your communications system, including interfaces to partyline intercoms, cables, telephone lines, and relays. Accessories also include control panels for IFB levels and assignments, panels for adjusting system audio levels, microphones, and 4-wire beltpacks.

RTS two-wire intercom source assignment panel accessories are a key element in large, high-end RTS two-wire intercom partyline systems. With the ability to turn a standard 2-bus communications system into a 12 or more bus configuration, source assignment panels are vital to system expansion. Increasing the number of usable communication busses allows the system to be tailored to individual user needs.

The **SAP-1626** is a 2RU source assignment panel. It assigns any one of 12 intercom channels and/or three program audio channels to 26 separate 2-channel user stations via convenient thumb-wheel switches. I/O provided via two 50-pin connectors. Normally used in conjunction with a BOP-220.



The **SAP-612** source assignment panel transforms a basic 2-bus intercom system into a 6-bus system via convenient slide switches. Provides six input channels and 12 2-channel 2-wire user station strings. I/O provided via two ¼", three 3-pin XLR



female, and twelve 3-pin XLR male connectors. Contains XLR jacks for RTS power supply.

The **BOP-220** is a 19", 3RU breakout panel, I/O connector transition assembly. It provides a convenient interface between a SAP-1626 (25 pair 50-pin) and up to 20 user stations or strings of stations (3-pin XLR male).

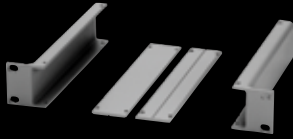


The **MCS-325** is a passive modular speaker. It can be combined with MCE-325 and MRT-327 to provide speaker station operation. Packaged in ½ rack by 1RU metal housing for added durability.

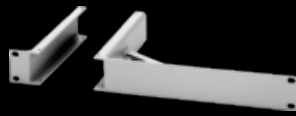


The **LMS-325** is a (active) line-monitor speaker station. Part of RTS's unique modular packaging system. Features a full-range, 5W speaker and power amp, dual-channel inputs from 2-wire or separate program inputs, and volume control. Packaged in ½ rack by 1RU metal housing for added durability and magnetically shielded for use near video monitors.





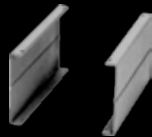
MCP-1
Mounting Bracket for Two Main Components



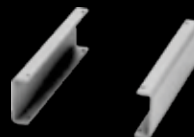
MCP-2
Single Rackmount Kit



MCP-3
Mounting Kit for One Main Component



MCP-4
Tandem Mount Kit for Two Main Components



MCP-8
Side Channels

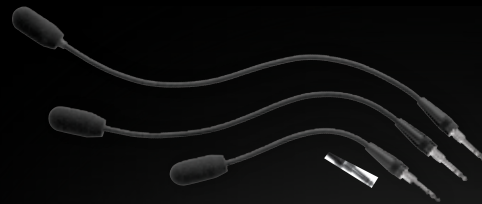
MCP-90
Electret Gooseneck Microphone

MCP-90-0
0" Gooseneck Microphone

MCP-90-8
8" Gooseneck Microphone

MCP-90-12
12" Gooseneck Microphone

MCP-90-18
18" Gooseneck Microphone



CIA-1000
Call Light Indicator Assembly



TW-5W
1 x 5 Dual-Channel 3-Pin XLR-Type Passive Splitter



TW-7W
One XLR-3F into Seven XLR-3M Out

4022
1 x 2 25 pair, 50-pin passive splitter

4025A
1 x 4 50-pin passive splitter

Product Specifications

19" Rackmount Products

Product	Height	Depth	Weight	Color
4010	1RU	15" (38.1 cm)	10.74 lbs (4.87 kg)	Grey
4012	3RU	5.06" (12.86 cm)	3.72 lbs (1.69 kg)	Silver
ADAM	7RU	21" (53.34 cm)	48 lbs (21.77 kg)	Grey
ADAM-M	3RU	21" (53.34 cm)	22.05 lbs (10.00 kg)	Duotone
BOP-220	3RU	5" (12.7 cm)	2.43 lbs (1.1 kg)	Silver
Cronus	2RU	13.25" (33.66 cm)	14.15 lbs (6.41 kg)	Grey
CSI-200	1RU	8.25" (20.96 cm)	2.2 lbs (1 kg)	Grey
DSI-2008	1RU	8.25" (20.96 cm)	2.9 lbs (1.32 kg)	Grey
EKP 32 CLD	2RU	3.25" (8.26 cm)	6.3 lbs (2.86 kg)	Duotone
EKP x12	1RU	7.5" (19.1 cm)	3.7 lbs (1.68 kg)	Black or Grey
EKP x12-16	1RU	7.5" (19.1 cm)	5.12 lbs (2.3 kg)	Black or Grey
EKP-20	1RU	7.13" (18.1 cm)	4.6 lbs (2.09 kg)	Black or Grey
EKP-32	2RU	5" (12.7 cm)	5.6 lbs (2.54 kg)	Black or Grey
GPIO-16	1RU	7" (17.78 cm)	5.48 lbs (2.49 kg)	Grey
ICP-2000	1RU	0.75" (1.91 cm)	0.89 lbs (0.4 kg)	Black
IFB-828	1RU	7" (17.78 cm)	8.84 lbs (4.01 kg)	Grey
KP 12 CLD	1RU	4.28" (10.87 cm)	3.76 lbs (1.71 kg)	Duotone
KP 32 CLD	2RU	3.25" (8.25 cm)	6.3 lbs (2.86 kg)	Duotone
KP-x12	1RU	7.5" (19.1 cm)	6.42 lbs (2.91 kg)	Black or Grey
KP-12	1RU	5.5" (14 cm)	5.1 lbs (2.31 kg)	Black or Grey
KP-32	2RU	5" (12.7 cm)	6.4 lbs (2.9 kg)	Black or Grey
KP-32-16	2RU	5" (12.7 cm)	5.9 lbs (2.68 kg)	Black or Grey
KP-632	2RU	5" (12.7 cm)	6.28 lbs (2.85 kg)	Black or Grey
KP-832	2RU	5" (12.7 cm)	6.28 lbs (2.85 kg)	Black or Grey
LCP-102	2RU	7.13" (18.1 cm)	8.28 lbs (3.76 kg)	Black or Grey
LCP-12, 20	1RU	6.63" (16.83 cm)	3 lbs (1.36 kg)	Black or Grey
LCP-32/16	1RU	1.75" (4.45 cm)	3 lbs (1.36 kg)	Black or Grey
LMS-325	1RU	8" (20.32 cm)	2.76 lbs (1.25 kg)	Grey
MCE-325	1RU	8" (20.32 cm)	4.5 lbs (2.04 kg)	Grey
MCS-325	1RU	8.25" (21 cm)	2.52 lbs (1.14 kg)	Grey
MDA-100	1RU	8.5" (21.59 cm)	7.38 lbs (3.35 kg)	Grey
MKP-12	1RU	8" (20.3 cm)	4.96 lbs (2.25 kg)	Black or Grey
MKP-4	1RU	8.25" (21 cm)	2.82 lbs (1.28 kg)	Grey
MRT-327	1RU	9" (22.86 cm)	2.75 lbs (1.25 kg)	Grey
MTM-2000	2RU	12" (30.48 cm)	26.78 lbs (12.15 kg)	Black
PAM-32	2RU	3.5" (9 cm)	3.86 lbs (1.75 kg)	Black or Grey
PAP-32	2RU	4.5" (11.43 cm)	5.58 lbs (2.53 kg)	Black or Grey
PS-20	1RU	8.56" (21.75 cm)	5 lbs (2.27 kg)	Grey

Product	Height	Depth	Weight	Color
RKP-4B	1RU	9" (22.86 cm)	3.5 lbs (1.59 kg)	Black
RM-325	1RU	8" (20.32 cm)	2.75 lbs (1.25 kg)	Grey
RVON-I/O	1RU	8" (20.32 cm)	3.7 lbs (1.67 kg)	Grey
SAP-1626	2RU	9.8" (24.89 cm)	10 lbs (4.54 kg)	Grey
SAP-612	1RU	8" (20.32 cm)	4.52 lbs (2.05 kg)	Grey
SIP-ISDN	1RU	8.5" (21.59 cm)	3 lbs (1.36 kg)	Duotone
SSA-324	1RU	8.25" (20.96 cm)	2.7 lbs (1.22 kg)	Grey
SWP-2000	1RU	5.75" (14.61 cm)	4.6 lbs (2.09 kg)	Black
TIF-2000A	1RU	8.25" (20.96 cm)	2.25 lbs (1.13 kg)	Grey
TIF-4000	4RU	13" (33.02 cm)	28.45 lbs (12.9 kg)	Grey
TM-2000	4RU	18" (45.72 cm)	37.06 lbs (16.81 kg)	Black
Zeus III/III+	1RU	15" (38.1 cm)	7 lbs (3.18 kg)	Duotone
Zeus III LE/LE+	1RU	15" (38.1 cm)	7 lbs (3.18 kg)	Duotone

Non-Rackmount Products

Product	Form Factor	Height	Width	Depth	Weight	Color
4030	Beltpack	1.5" (3.8 cm)	3.75" (9.53 cm)	1.8" (4.57 cm)	0.67 lbs (0.3 kg)	Grey
BKP-4	Desktop	5.06" (12.86 cm)	9.25" (23.5 cm)	8" (20.32 cm)	3.2 lbs (1.45 kg)	Grey
BP-319	Beltpack	5" (12.7 cm)	3.5" (8.89 cm)	1.8" (4.57 cm)	0.75 lbs (0.34 kg)	Black or Grey
BP-325	Beltpack	5" (12.7 cm)	3.75" (9.53 cm)	2.05" (5.21 cm)	0.5" (0.23 kg)	Black or Grey
BP-351	Beltpack	5" (12.7 cm)	3.5" (8.89 cm)	1.8" (4.57 cm)	0.75" (0.34 kg)	Black or Grey
CIA-1000 Front	Rackmount or Desktop	1RU	8.19" (20.8 cm)	5.56" (14.13 cm)	0.94 lbs (0.43 kg)	Grey
CIA-1000 Top	Desktop	2" (5.08 cm)	8.19" (20.8 cm)	5.25" (13.34 cm)	0.94 lbs (0.43 kg)	Grey
CM-300L	Console Mount	2.75" (6.99 cm)	6.25" (15.88 cm)	6.4" (16.26 cm)	1.2 lbs (0.54 kg)	Grey
DKP 16 CLD	Desktop	3.2" (8.13 cm)	10.1" (25.65 cm)	9.2" (23.37 cm)	3.78 lbs (1.71 kg)	Duotone
DKP-x12	Desktop	3.1" (7.87 cm)	11.3" (28.7 cm)	7.63" (19.4 cm)	4.17 lbs (1.89 kg)	Black or Grey
DKP-x12HND	Desktop	3.1" (7.87 cm)	11.3" (28.7 cm)	7.63" (19.4 cm)	6.45 lbs (2.93 kg)	Black or Grey
DKP-8, 12	Desktop	3.75" (9.53 cm)	9" (22.86 cm)	7.25" (18.42 cm)	4.58 lbs (2.08 kg)	Grey
IFB-325	Beltpack	1.5" (3.8 cm)	3.75" (9.53 cm)	1" (2.54 cm)	1 lb (0.45 kg)	Grey
KP-8T	Tektronix WFM	5.2" (13.21 cm)	8.38" (21.29 cm)	9" (22.86 cm)	10.9 lbs (4.94 kg)	Grey
RKP-4	Beltpack	5.35" (13.59 cm)	3.75" (9.53 cm)	2.02" (5.13 cm)	1.2 lbs (0.55 kg)	Black
SPK-300L	Desktop	4" (10.16 cm)	8" (20.32 cm)	8" (20.32 cm)	3.5 lbs (1.59 kg)	Grey
TKP-4	Tektronix WFM	5.2" (13.21 cm)	3.25" (8.26 cm)	3.5" (8.3 cm)	1.84 lbs (0.83 kg)	Grey
WKP-1	Wallmount	4.5" (11.43 cm)	4.5" (11.43 cm)	2.75" (7 cm)	0.79 lbs (0.36 kg)	Grey
WKP-4	Wallmount	6.5" (16.51 cm)	9" (22.9 cm)	2.5" (6.35 cm)	1.32 lbs (0.6 kg)	Grey
WM-300L	Wallmount	4.5" (11.43 cm)	4.5" (11.43 cm)	1.81" (4.6 cm)	0.56 lbs (0.25 kg)	Grey
WMS-300L	Wallmount	4.5" (11.43 cm)	8" (20.32 cm)	1.75" (4.45 cm)	1 lb (0.45 kg)	Grey

Intercom Headsets

RTS offers a wide variety of headset styles to choose from, including lightweight and full-cushion headsets in either single or dual-sided versions. We also have hearing protection headsets that offer noise reduction of up to 24 dB and earset selections that can accommodate all applications.

Most headsets feature our latest flexible boom arms and are terminated with an A4M connector for compatibility with RTS intercom systems. Most headsets are also available with an A5M connector or unterminated.

The right headset for the right application

Feature	MH-300, -302, -402	PH-88, -44	PH-1, -2	HR-1, -2
Single Sided	MH-300	PH-88	PH-1	HR-1
Dual Sided	MH-302, -402	PH-44	PH-2	HR-2
Weight W/O cord	8 oz, 10 oz, 10 oz	2.5 oz, 3 oz	11 oz, 13 oz	11 oz, 15 oz
Noise Reduction Rating Dual-Sided Only	MH-402: 12 dB			21 dB
Mic Type	Flexible Dynamic Noise-Cancelling	Flexible Dynamic Noise-Cancelling	Flexible Dynamic Noise-Cancelling	Flexible Dynamic Noise-Cancelling
Mic Sensitivity		-65 dBV/Pa @ 1 cm	-65 dBV/Pa @ 1 cm	-65 dBV/Pa @ 1 cm
Mic Frequency Range	200 Hz – 10 kHz	200 Hz – 10 kHz	200 Hz – 6 kHz	150 Hz – 8 kHz
Mic Impedance	200Ω	200Ω	150Ω	200Ω
Speaker Sensitivity	100 dB SPL @ 1 kHz, 1 mW	109 dB SPL @ 1 kHz, 1 mW	95 dB SPL @ 1 kHz, 1 mW	95 dB SPL @ 1 kHz, 1 mW
Speaker Frequency Range	100 Hz – 10 kHz	100 Hz – 7 kHz	100 Hz – 10 kHz	100 Hz – 3 kHz
Speaker Impedance	150Ω	300Ω, 150Ω	300Ω, 150Ω	300Ω, 150Ω

RTS Announcer Earsets

The popular RTS earsets are precisely designed for inconspicuous listening while on camera. Used by nearly all major television networks and stations, we have surpassed industry standards. The extremely efficient miniature driver element requires only nominal operating power and enables the announcer to hear program cues while working with a live microphone. The units are also suitable for many other applications, such as live-theater script prompting.



CES-1



CES-2

Premium Lightweight Headsets

RTS MH single- and dual-sided headsets combine a unique, multi-functional modular design with low-profile, lightweight construction. Three models are available. MH-300 single-sided headset, MH-302 dual-sided headset, and MH-402 dual-sided headset with ANR (Active Noise Reduction).



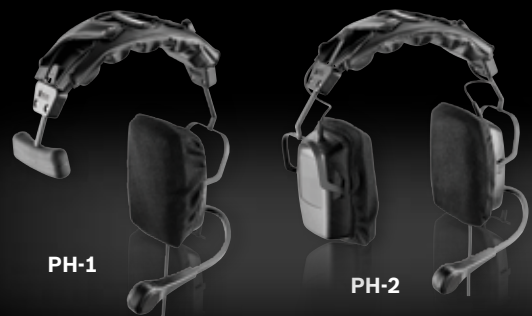
Lightweight Headsets

The PH-88 and PH-44 are super lightweight headsets for the ultimate in daylong comfort. They offer a dynamic noise-cancelling gooseneck microphone with a semi-rigid, fully adjustable boom for precise positioning. The high-quality wide band dynamic earphones are covered in moleskin for superior fit, isolation, and frequency response.



Full-Cushion, Medium Weight Headsets

The PH-1 and PH-2 series of medium-weight intercom headsets is considered the industry-standard by many users in all applications. With a weight of only 11 oz and 13 oz respectively, these headsets offer the ultimate in daylong comfort.



Medium Weight Headsets

The HR-1 and HR-2 are medium-weight passive noise reduction headsets with dynamic noise-canceling microphones. The headsets have a noise reduction rating of 21 dB; suitable for use in a moderately noisy environment. The ergonomic moleskin-covered headband design distributes pressure evenly with no pressure points, ensuring hours of comfortable wear. This headset folds into a compact form for ease of storage.



For information on any of the products featured in this catalog, you can reach us at info@rtsintercoms.com

Please visit the RTS website at: www.rtsintercoms.com

Americas

Bosch Communications Systems
RTS Communications Inc.
12000 Portland Ave South
Burnsville, MN, USA 55337
USA—Phone: 877-863-4169, Fax: 1-800-955-6831
Canada—Phone: 1-866-505-5551, Fax: 1-866-336-8467
Latin America—Phone: +55 19 2103-2860, Fax: +55 19 2103-2860

Europe, Middle East & Africa

EVI Audio GmbH
Hirschberger Ring 60
94315 Straubing
Germany
Phone: +49 9421 706-0, Fax: +49 9421 706-350

RTS Communications (U.K.), Ltd.
Broadwater Park
Willow Lane, Mitcham
Denham UB9 5HJ, Great Britain
Phone: +44 1895 87 80 55, Fax: +44 1707 26 50 83

Asia & Pacific Rim

EVI Audio Japan Ltd.
5-3-8 Funabashi, Setagaya-Ku
Tokyo, Japan 156-0055
Phone: +81 3-5316-5020, Fax: +81-3-5316-5030

EVI Audio Ltd.
Room 2210-2215, Tower B, Far East International
Plaza, No. 317, Xianxia Road
Shanghai, China, 200051
Phone: +86 (21) 6235-1677, Fax: +86 (21) 6235-1676

EVI Audio (HK) Ltd.
7th Floor China Minmetals Tower
No. 79 Chatham Road South
Tsim Sha Tsui, Kowloon, Hong Kong
Phone: +852 2351-3628, Fax: +852 2351-3329

Bosch Communications Systems
RTS Communications (SEA) Pte Ltd.
38C Jalan Pemimpin
Singapore 577180
Phone: +(65) 6319 0621, Fax: +(65) 6319 0620

RTS