

WORKABOUT PRO RFID READER WA9900-G2 INSTRUCTIONS

I. Preparation



Note: This RFID reader installation instruction sheet applies to the following WORKABOUT PRO model numbers: 7525C and 7527S.



Warning: The installation of this RFID PCMCIA Card must be performed using the appropriate anti-static devices. If such devices are unavailable, discharge static from your body by touching a grounded metallic object before opening any covers on the unit.



Important: The WORKABOUT PRO does not support hot-swapping of PCMCIA Cards. All power sources must be switched off before a card is inserted in the unit.

The RFID Reader kit consists of a PCMCIA Card, an antenna cable, an antenna mounted in an end-cap, plus a mechanical stop to secure the card inside the unit.



Figure 1 Contents Of The Kit

The PCMCIA Card slides into the PCMCIA slot in your WORKABOUT PRO. It can be used alongside the built-in Bluetooth radio. The end-cap replaces the existing end-cap on your WORKABOUT PRO.

For detailed information on operation and specifications, please refer to the WORKABOUT PRO Hand-Held Computer User Manual for your unit.

2. Installation

To install the RFID Reader:



Important: Back up any data in RAM first, since it will be erased when the unit is turned off.

1. If your WORKABOUT PRO is using AC power, disconnect it.
2. Remove the WORKABOUT PRO battery pack.
3. Slide the hardware power switch inside the battery compartment to switch off internal battery-backup power:

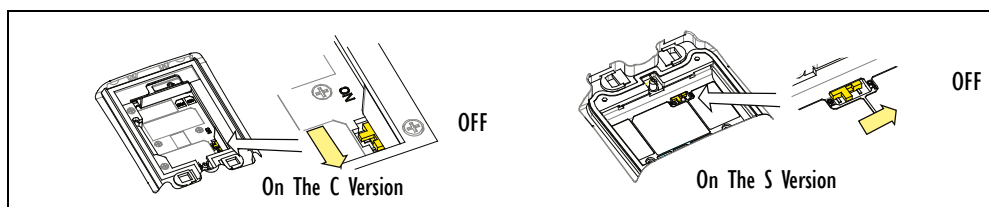


Figure 2 Switching Internal Battery-Backup Power Off

4. Remove the end-cap at the top of the WORKABOUT PRO. Use a #1 Phillips screwdriver on the four screws.

5. Install the Psion Teklogix PCMCIA Expansion Module kit, model WA9101-G1 (not included) in the WORKABOUT PRO. This provides the connector for the PCMCIA Card.

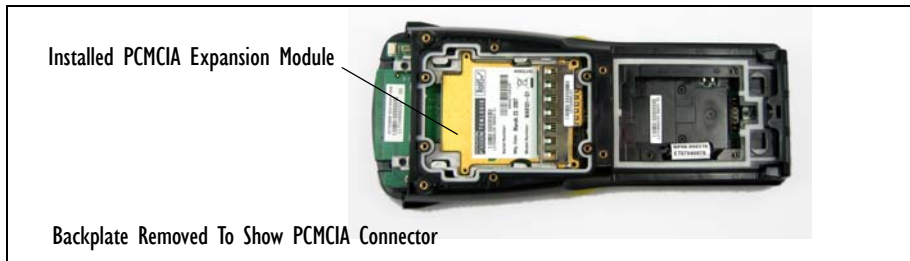


Figure 3 The WORKABOUT PRO With The PCMCIA Expansion Module Installed

6. Slide the PCMCIA Card, with the label facing up, into the PCMCIA slot until it is fully seated:



Figure 4 Inserting The Radio Card

7. Connect the antenna cable to the connector on the right of the RFID card:

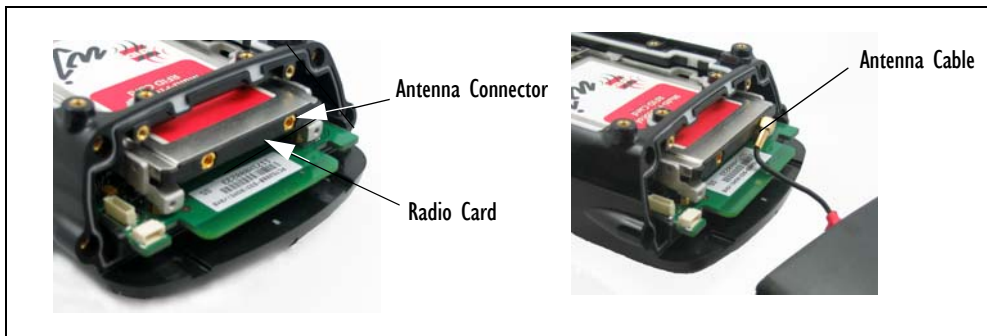


Figure 5 Connecting The Antenna

8. Insert the mechanical stop so that the antenna cable protrudes through the gap:

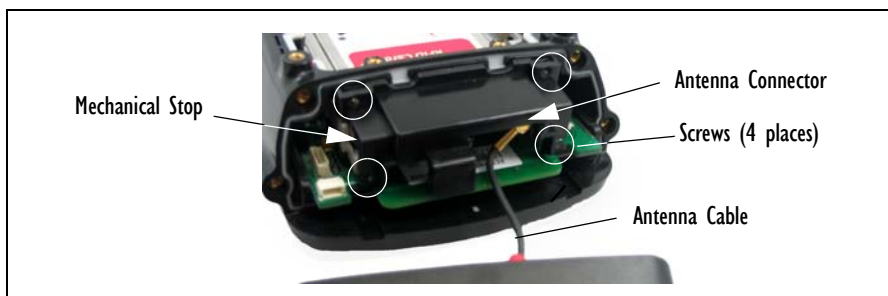


Figure 6 Attaching The Mechanical Stop

9. Tighten the 4 screws of the mechanical stop to a torque of 2 lb-in (0.23 N·m). Use a #1 Phillips screwdriver.

10. Attach the end-cap.



Figure 7 Attaching The End-Cap

11. Tighten the 4 end-cap screws to a torque of 3 lb-in (0.34 N·m).
12. Slide the hardware power switch to turn battery-backup power back on.

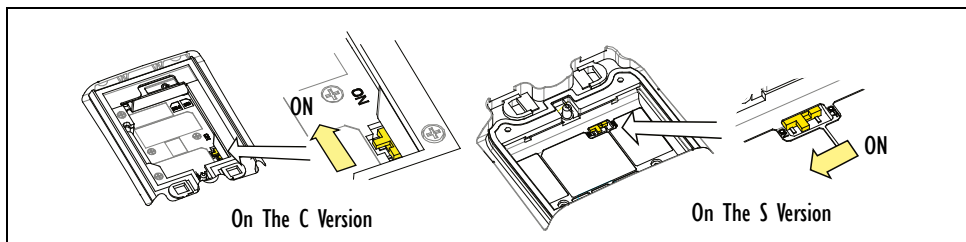


Figure 8 Switching Internal Battery-Backup Power On

13. Replace the battery and battery cover.
14. Verify the installation.

April 15, 2008

8100171 Rev. A

Sheet 3 of 3

COMPANY HEADQUARTERS AND CANADIAN SERVICE CENTRE

Psion Teklogix Inc.

2100 Meadowvale Boulevard, Mississauga

Ontario, Canada L5N 7J9

Tel: +1 905 813 9900

Fax: +1 905 812 6300

E-mail: salescdn@psion.com

