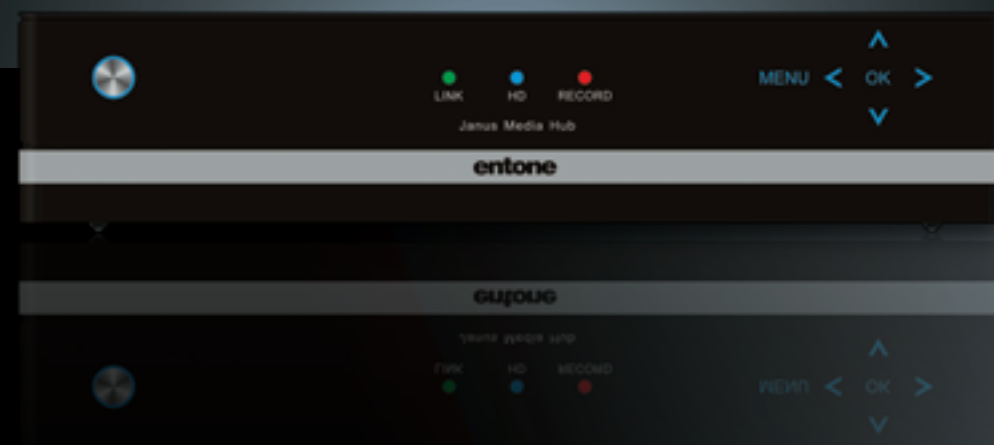


entone[®]

JANUS MEDIA HUB

300 & 350 SERIES
SETUP GUIDE



entone[®]

COPYRIGHT

©2011 Entone, Inc. All rights reserved. This document contains proprietary information protected by copyright. No part of this publication may be reproduced, stored in a retrieval system, or transmitted in any form or by any means, electronic, mechanical, photocopying, recording or otherwise, without the prior written consent of Entone, Inc., 20863 Stevens, Creek Blvd, Suite 300, Cupertino, CA 95014, U.S.A.

DISCLAIMER

IF THIS PRODUCT DIRECTS YOU TO COPY MATERIALS, YOU MUST HAVE PERMISSION FROM THE COPYRIGHT OWNER OF THE MATERIALS TO AVOID VIOLATING THE LAW WHICH COULD RESULT IN DAMAGES OR OTHER REMEDIES.

TRADEMARKS

Entone and the tagline "Connecting the Home" are trademarks of Entone, Inc. All other trademarks or registered trademarks belong to their respective owners.

CHANGES

The material in this document is for information only and is subject to change without notice. While reasonable efforts have been made in the preparation of this document to assure its accuracy, Entone, Inc. assumes no liability resulting from the use of the information contained herein. Entone, Inc. reserves the right to make changes in the product design without reservation and without notification to its users.

P/N: 95-861000-06 - v2.0

TABLE OF CONTENTS

OVERVIEW

- 2 Safety Instructions
- 4 What's Included
- 6 Front Panel
- 7 Back Panel
- 8 Remote Control

CONNECTING VIDEO

- 10 High-Definition TVs
- 12 Standard Definition TVs

CONNECTING TV SOURCE

- 15 Cable or ATSC Antenna

CONNECTING AUDIO

- 16 TV (Stereo)
- 17 A/V Receiver (Surround Sound)

CONNECTING NETWORK

- 18 Wired
- 19 Wireless

POWERING UP

- 20 Setting up Remote Control
- 21 Connecting to Power Source
- 22 Declaration of Conformity

IMPORTANT SAFETY INSTRUCTIONS

- **WARNING:** To prevent fire or shock hazard, do not expose this product to rain or moisture.
- Read these instructions.
- Keep these instructions.
- Heed all warnings.
- Follow all instructions.
- Do not use this apparatus near water.
- Clean only with dry cloth.
- Do not block any ventilation openings. Install in accordance with the manufacturer's instructions.
- Do not defeat the safety purpose of the polarized or grounding-type plug. A polarized plug has two blades with one wider than the other. A grounding type plug has two blades and a third grounding prong. The wide blade or the third prongs are provided for your safety. If the provided plug does not fit into your outlet, consult an electrician for replacement of the obsolete outlet.
- Protect the power cord from being walked on or pinched particularly at plugs, convenience receptacles, and the point where they exit from the apparatus.
- Only use attachments/accessories specified by the manufacturer.
- Use only with the cart, stand, tripod, bracket, or table specified by the manufacturer, or sold with the apparatus. When a cart is used, use caution when moving the cart/apparatus combination to avoid injury from tip-over.
- Unplug this apparatus during lightning storms or when unused for long periods of time.
- Refer all servicing to qualified service personnel. Servicing is required when the apparatus has been damaged in any way, such as power-supply cord or plug is damaged, liquid has been spilled or objects have fallen into the apparatus, the apparatus has been exposed to rain or moisture, does not operate normally, or has been dropped.
- To reduce the risk of electric shock, **DO NOT** remove cover or back panel. No user serviceable parts inside. Refer servicing to qualified personnel.

IMPORTANT SAFETY INSTRUCTIONS

- To help prevent electric shock, plug the power cable into properly grounded sources. Use only properly grounded extension cords and adaptors, if they are needed.
- The AC main plug is used as the disconnect device, the disconnect device shall remain readily operable.
- Make sure nothing is lying on any of the cables.
- Be sure the cables are located where they will not be stepped on or tripped over.
- Do not spill food or liquids onto the unit.
- Do not push any objects into the free slots. Doing so will damage the unit, can cause fire or electrical shock, and can short out interior components.
- Do not install near any heat sources such as radiators, heat registers, stoves, or other apparatus (including amplifiers) that produce heat.
- Do not block cooling vents.
- Do not place the equipment in a closed-in wall unit.
- When you disconnect a cable, pull on its connector or on its strain relief loop, not on the cable itself. Some cables have a connector with locking tabs; if you are disconnecting this type of cable, press in on the locking tabs before disconnecting the cables.
- When you connect a cable, make sure both connectors are correctly oriented and aligned before connecting to avoid bending connector pins.
- For **PLUGGABLE EQUIPMENT**, the socket-outlet shall be installed near the equipment and shall be easily accessible.
- Changes or Modifications not expressly approved by the party responsible could void the user's authority to operate this device.

WHAT'S INCLUDED



Janus Media Hub



Universal IR Remote Control



AA Batteries for Remote Control



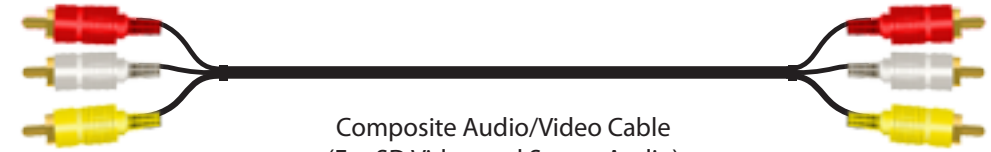
Wi-Fi Antennas for extended range (3 x Antenna)



Janus Setup Guide



Component Video Cable (For HD Video)



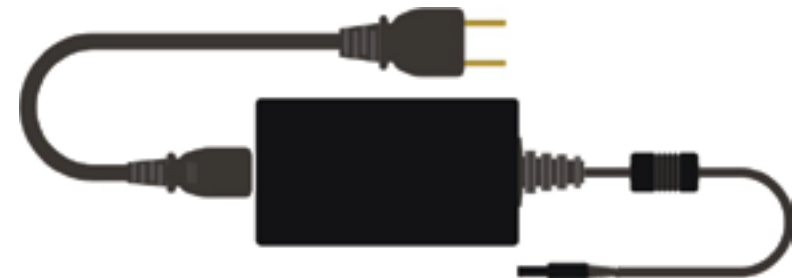
Composite Audio/Video Cable (For SD Video and Stereo Audio)



RF Coaxial Cable (For TV Sources)



Ethernet Cable (For Wired Networking)

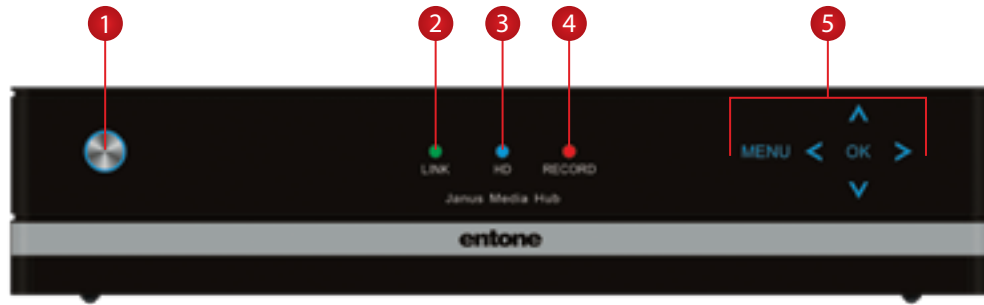


AC Power Adapter + Power Cord (100-240V, Output 12V/5A)

ADDITIONAL ITEMS THAT MAY BE REQUIRED:

- HDMI Cable
- S-Video Cable
- Digital Optical Cable
- Network Router
- IR Blaster

JANUS MEDIA HUB – FRONT PANEL



SIDE PANEL - LEFT SIDE



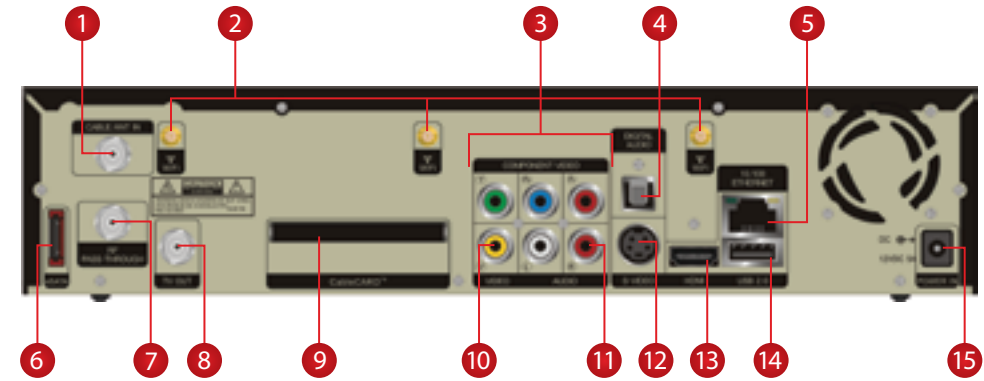
SIDE PANEL - RIGHT SIDE



Name	Function	Description
1 POWER	Button	Solid Blue indicates the unit is on Solid Red indicates the unit is in standby mode Flashing Blue indicates the unit is starting up Press button once to put unit in standby mode, press again to resume To restart the device, press and hold for at least 5 seconds or longer
2 LINK	Status LED	Green light indicates that Ethernet or Wi-Fi network connection is active
3 HD	Status LED	Blue light indicates current program is playing in HD (720p or higher) resolution
4 RECORD	Status LED	Red light indicates a TV program is currently recording
5 5-way Navigation + MENU	Capacitive Touch Panel	Use Menu, OK and Directional buttons to help with navigating the user interface without a remote control
6 USB	USB 2.0 Connector	To connect USB devices such as USB Flash Drive, External USB Hard Drive
7 SD/MS/MMC	Memory Card Slot	To read or transfer content from SD / MS / MMC flash memory card
8 IR	IR Blaster	To connect IR Blaster cable to control other devices

Availability of certain features is dependent on your provider.

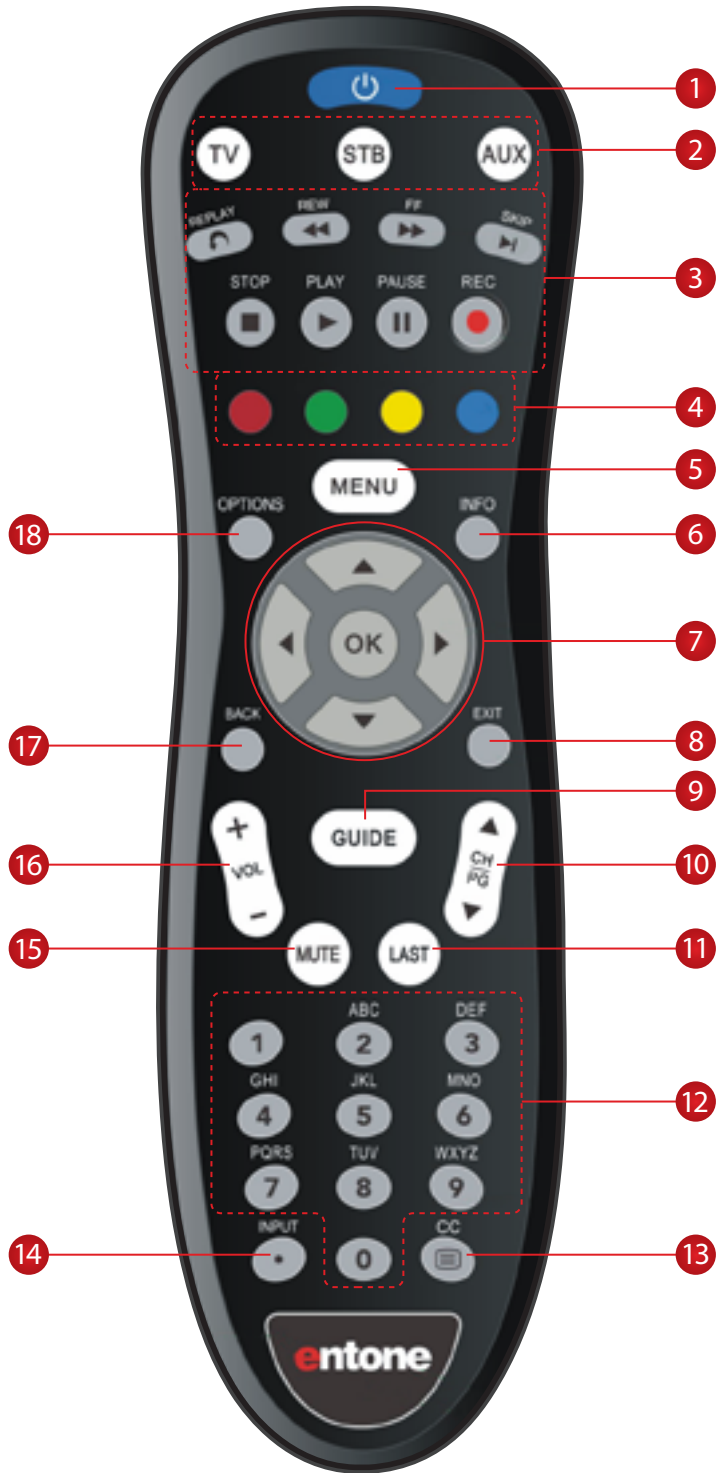
JANUS MEDIA HUB – BACK PANEL



Name	Description
1 CABLE/ANT IN	For Cable TV Source and ATSC Antenna
2 Wi-Fi	Attach Wi-Fi Antennas for extended range and coverage
3 COMPONENT VIDEO	Component Video Output (Y, Pb, Pr) (Supports HD Video)
4 DIGITAL AUDIO	Digital Audio Output - Optical Connection (Supports 5.1 Surround Sound)
5 10/100 ETHERNET	Ethernet Port
6 eSATA	External Serial ATA Connector (Supports External Hard Drive options)
7 RF PASS-THROUGH	Antenna / Cable TV Pass-Through
8 TV OUT	Connection to RF TV Output
9 CableCARD™	CableCARD Slot – Use only M-CARD (optional feature)
10 VIDEO	Composite Video (Supports SD Video)
11 AUDIO	Stereo Audio Output (Left / Right)
12 S-VIDEO	S-Video Output (Supports SD Video)
13 HDMI	HDMI Output (Supports HD Video and Multi-Channel Audio)
14 USB 2.0	USB Connector
15 POWER IN	Power connection to AC Adapter

Availability of certain features is dependent on your provider.

REMOTE CONTROL



Button(s)	Description
1 POWER	Switches the power on / off for the currently selected device Switches STB to power on / standby mode
2 DEVICE CONTROL	TV: Select to control TV (if programmed) STB: This button is pre-programmed to control the Janus Media Hub AUX: Select to control another device (if programmed)
3 TRANSPORT KEYS	Controls video program for LIVE TV / DVR / VOD REPLAY: Go back a few seconds REW: Rewinds video quickly FF: Fast forwards video quickly SKIP: Skips ahead in 30 second increments REC: Starts recording program PAUSE: Pauses video PLAY: Plays video or resumes a paused program STOP: Stops playback of video
4 SHORTCUT	Color-code buttons correspond to features that are enabled by your service provider (contact service provider for more details)
5 MENU	Shows on-screen menu or home screen
6 INFO	Shows on-screen information about the current TV / VOD / DVR program
7 NAVIGATION	ARROW KEYS: Navigates up, down, left and right within the on-screen guide or menus OK: Executes the currently selected menu option
8 EXIT	Exits the current menu item or out to LIVE TV
9 GUIDE	Shows the on-screen program guide
10 CH/PG	Changes channel up or down or goes page up or down within on-screen program guide
11 LAST	Changes channel to the most recently viewed channel
12 NUMBER KEYS	Allows direct access to specific channels and menu items
13 CC	Toggles closed captioning on or off
14 INPUT	Changes the current A/V input of the selected device programmed (i.e. TV or AUX) May be used when entering a period in certain channels On select applications use to bring up on-screen keyboard in web browser
15 MUTE	Turns the volume of the currently selected device off and on
16 VOL +/-	Increases or decreases volume of the currently selected device
17 BACK	Goes back one level within menus *
18 OPTIONS	Provides additional options for given on-screen menu or highlighted item*

* Availability of certain features is dependent on your provider

CONNECTING VIDEO HDTV (High-Definition)

Select only one Video option and then proceed to TV Source

OPTION #1 (Recommended)

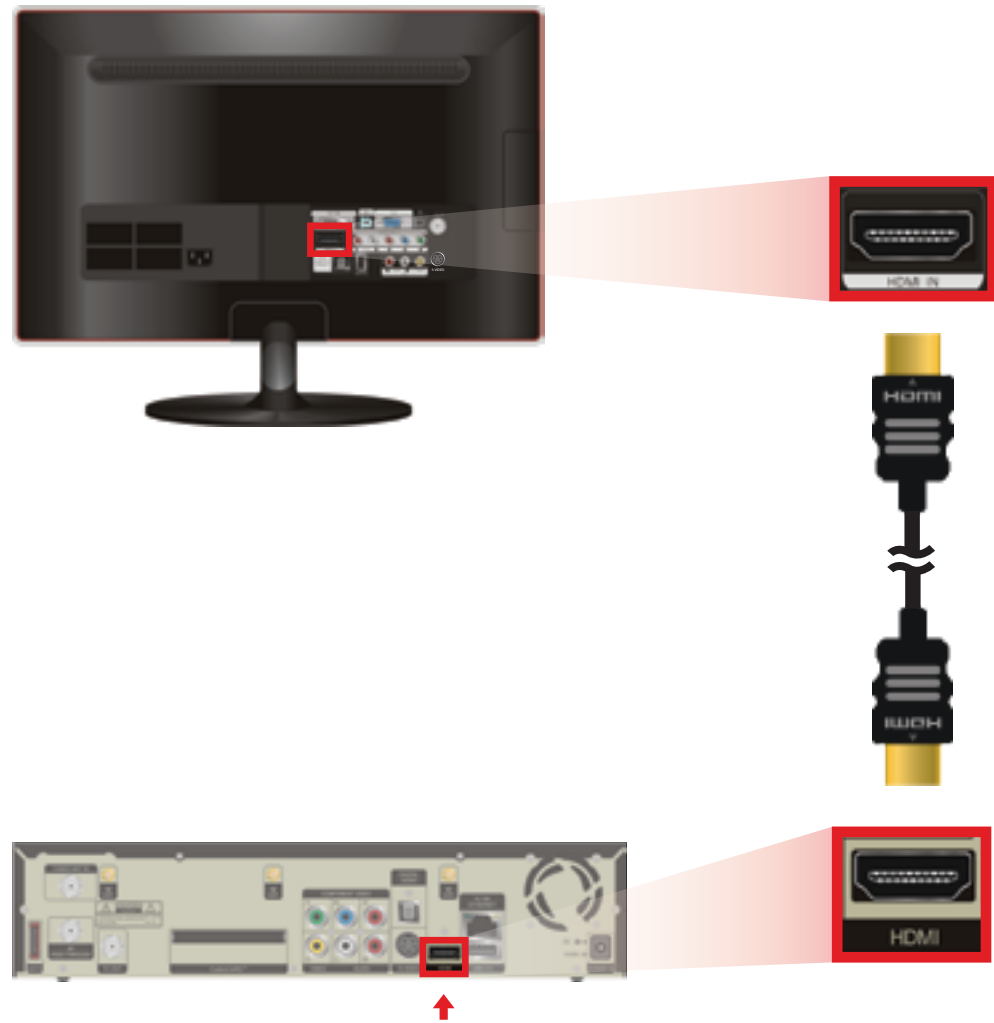
Connect to HDMI*

(HDMI Cable not included)



HDMI

Connects both Video & Audio to deliver best entertainment experience with a single cable



*This connection handles both Video and Multi-Channel Audio. If you have selected HDMI for your Video then proceed to page 15.

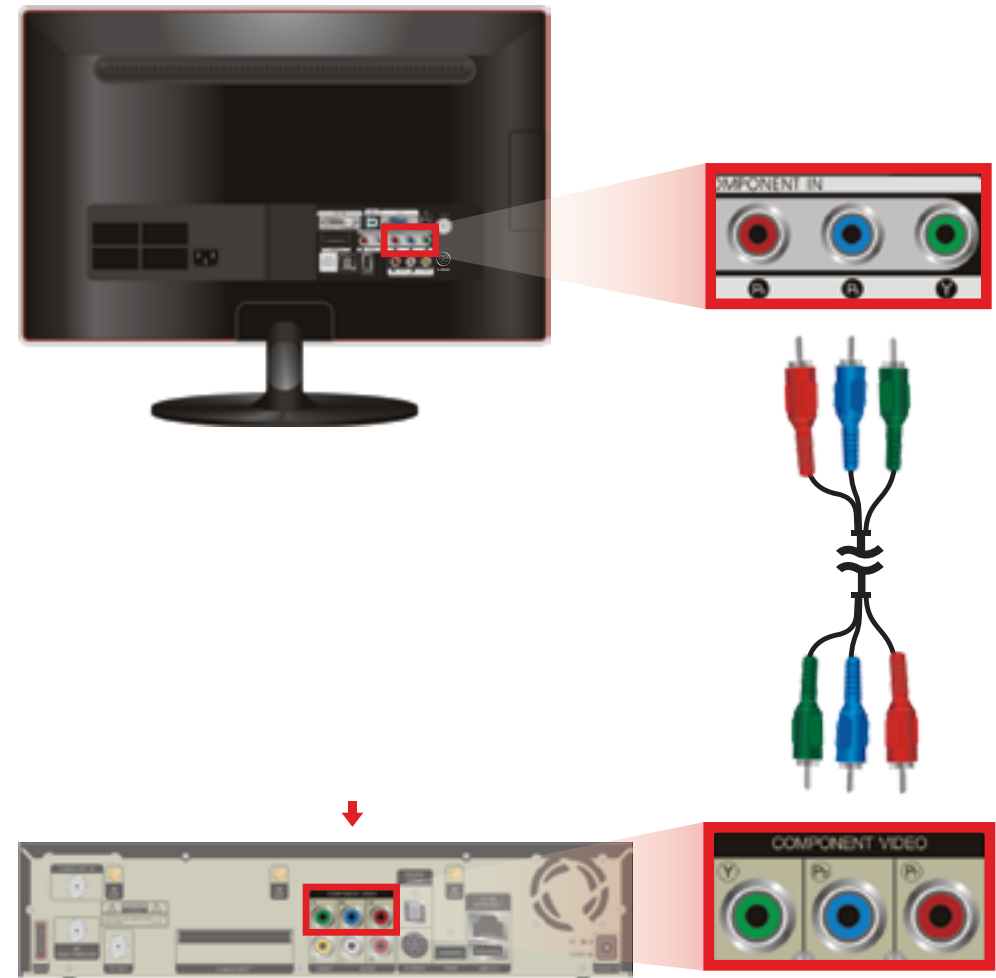
OPTION #2

Connect to Component Video



Component Video

Delivers excellent picture quality



CONNECTING VIDEO SDTV (Standard-Definition)

Select only one Video option and then proceed to TV Source

OPTION #1

Connect to S-Video

(Cable not included)



S-Video
 Delivers great picture quality

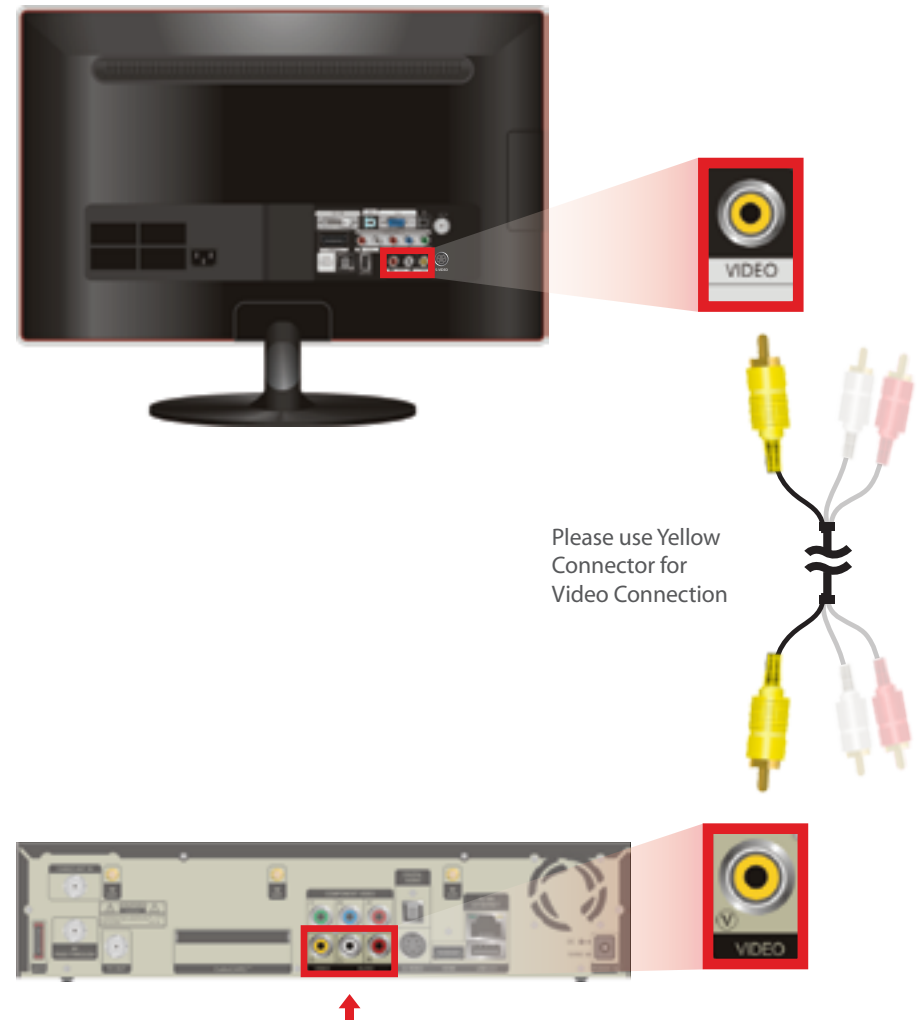


OPTION #2

Connect to Composite Video



Composite Video
 Delivers good picture quality



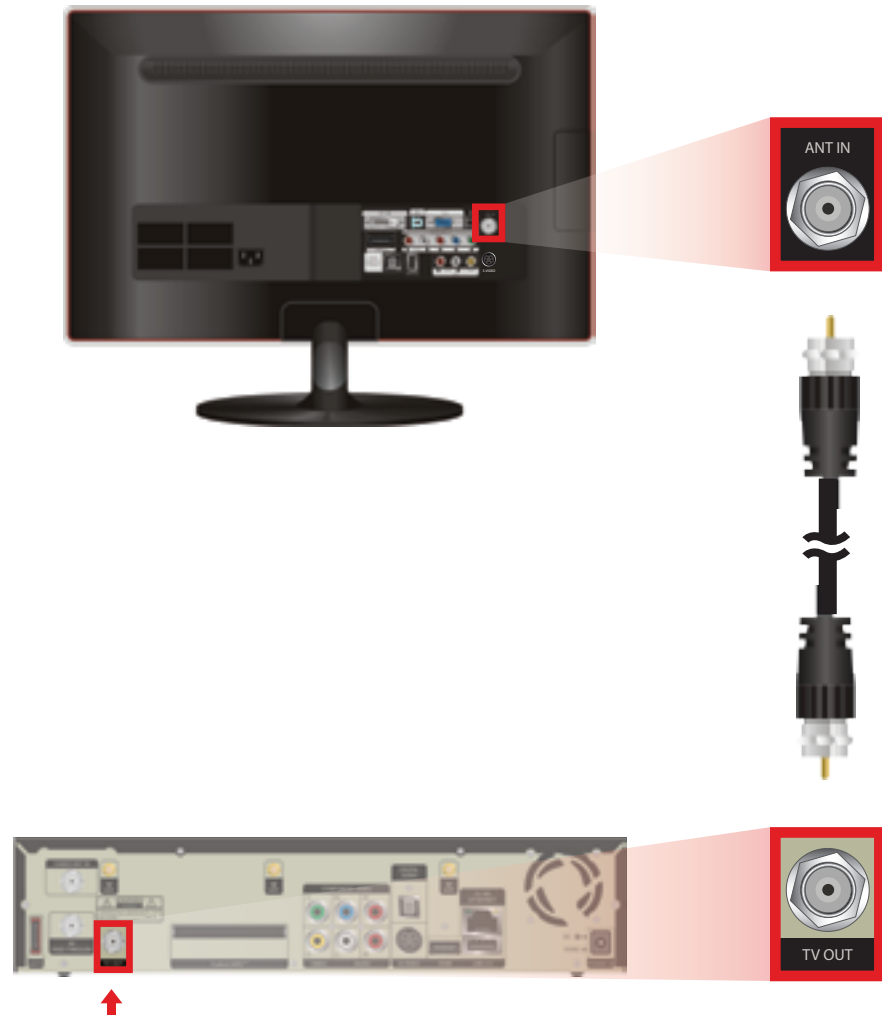
CONNECTING VIDEO SDTV (Standard-Definition)

Select only one Video option and then proceed to TV Source

OPTION #3

Connect to Coaxial

★
Coaxial Cable
 Delivers good picture quality



CONNECTING TV SOURCE CABLE OR ATSC ANTENNA

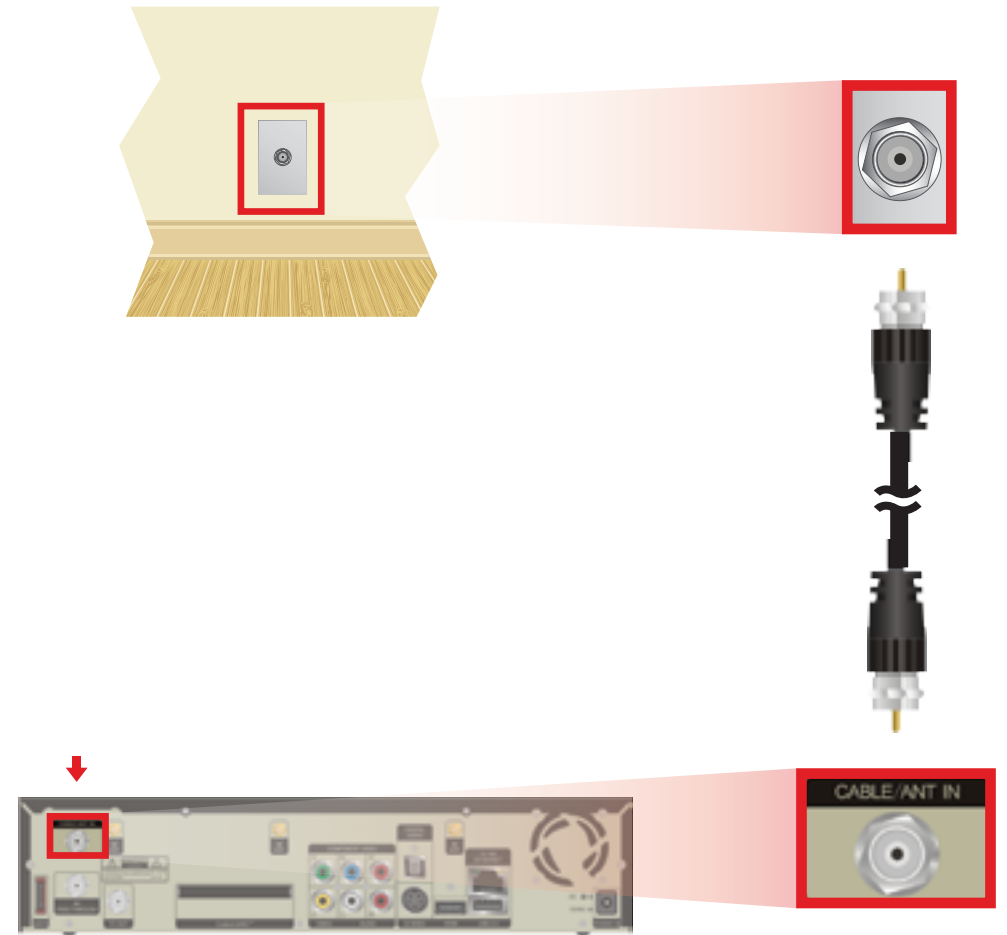
Select only one TV Source option and then proceed to Audio

OPTION #1

Connect to Cable TV Source using RF Coaxial Cable

OPTION #2

Connect to ATSC Antenna Source (Outdoor or Indoor Antenna)

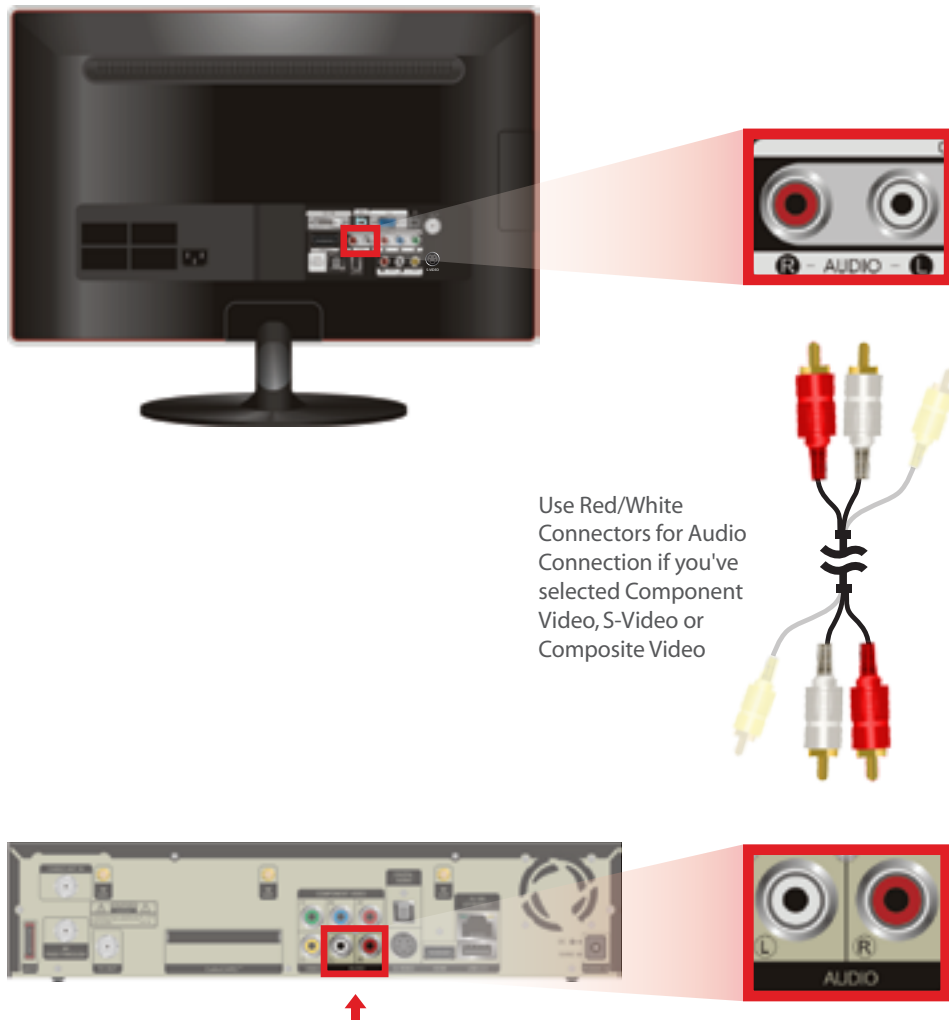


CONNECTING AUDIO TV (Stereo)

Select only one Audio option and then proceed to Networking

OPTION #1

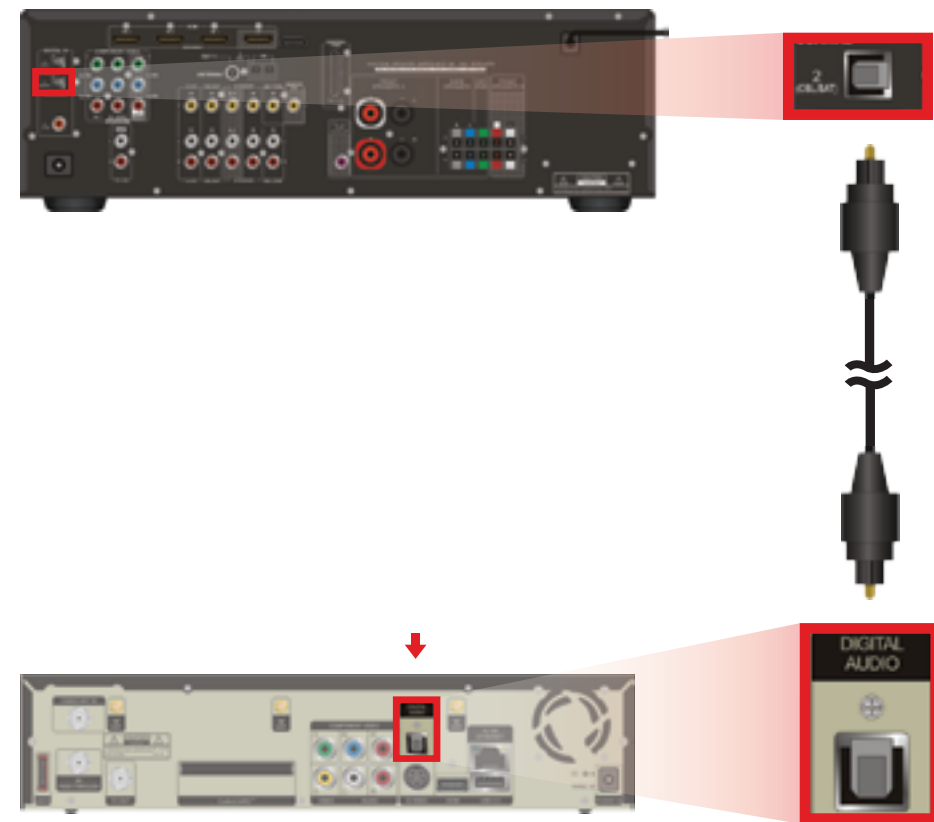
Connect to TV's Stereo Audio



CONNECTING AUDIO A/V RECEIVER (Surround Sound)

OPTION #2

Connect to A/V Receiver for Digital 5.1 Surround Sound
 (Cable not included)

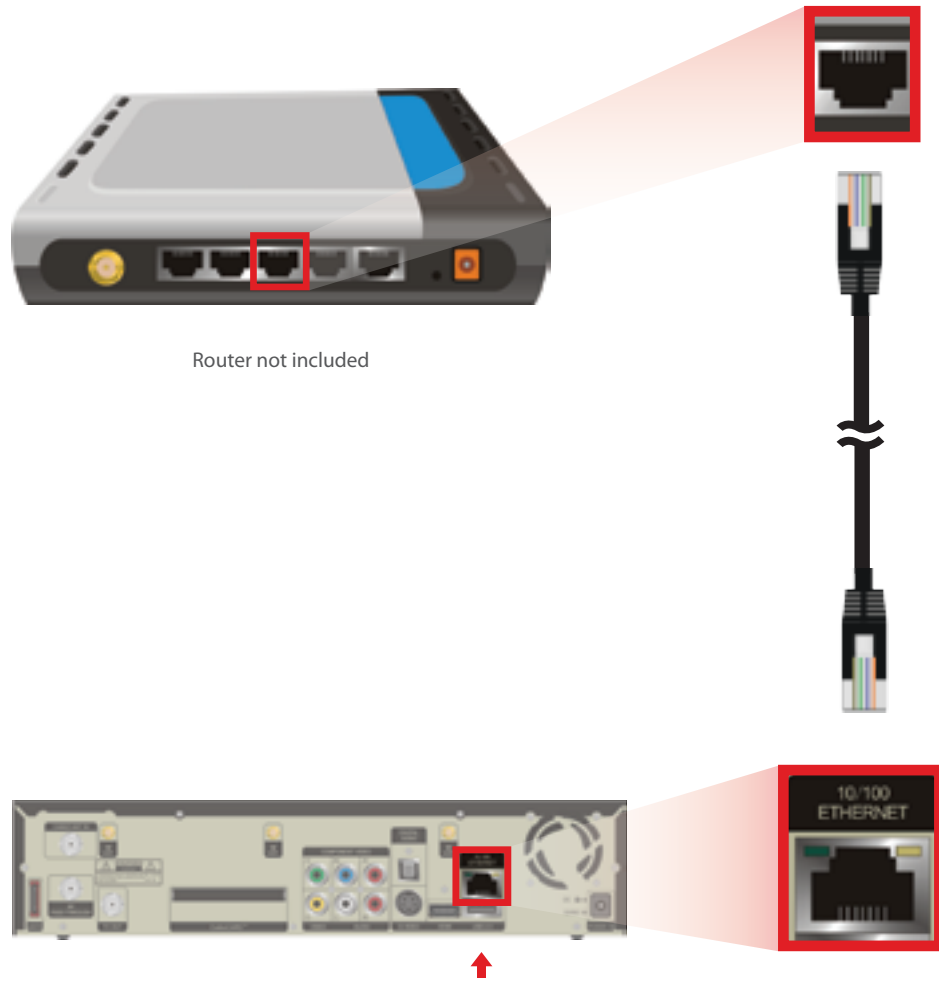


CONNECTING NETWORK WIRED

Select only one Networking option and then proceed to Powering up

OPTION #1

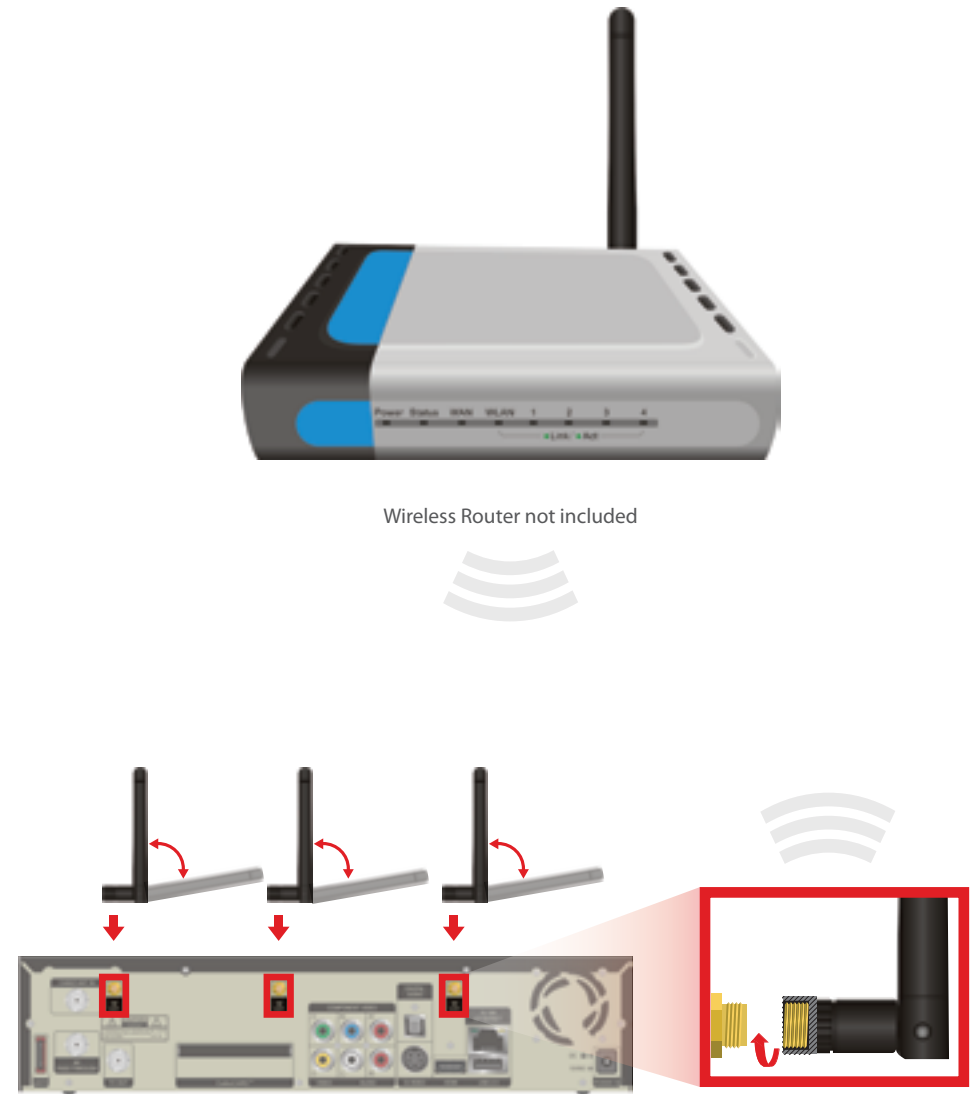
Connect to Wired Network via DSL, Cable Modem or Network Router



CONNECTING NETWORK WIRELESS

OPTION #2

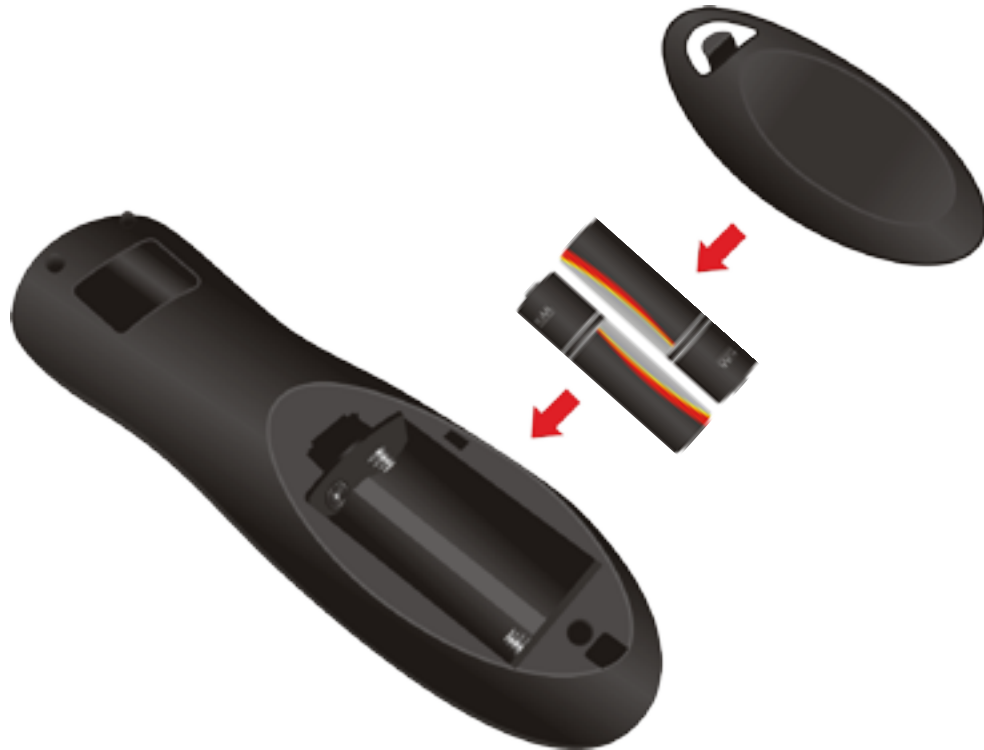
Connect to Wireless Network via Wireless Network Router or Access Point



Attaching and adjusting the Antenna angle will help achieve better coverage and range.

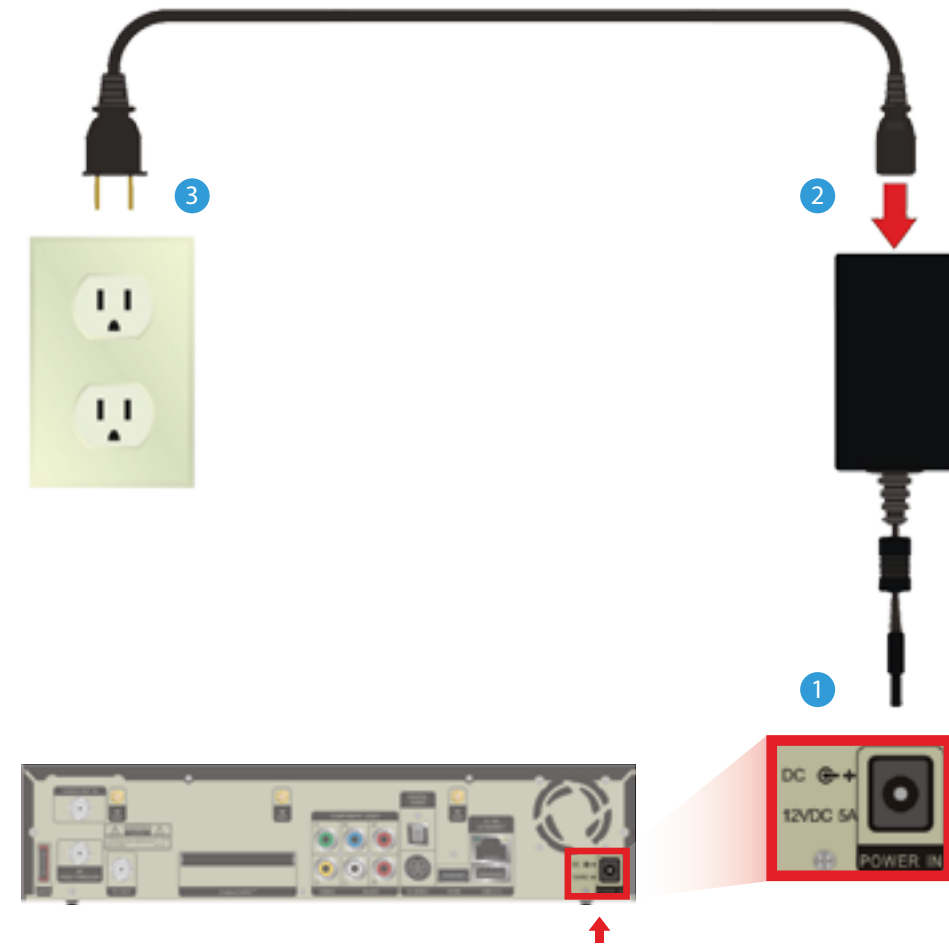
POWERING UP SETTING UP REMOTE CONTROL

1. Locate the AA batteries and remote in the accessory box
2. Open battery cover by pressing down on battery cover latch and sliding cover off
3. Insert the AA batteries, matching the "+" and "-" marks on the batteries to the "+" and "-" marks on the interior of the remote.
4. Snap the battery cover back onto the remote.








FINAL SETUP CONNECTING TO POWER SOURCE




1. Connect the power connector from adapter to POWER IN on the Janus Media Hub
2. Connect AC power cord to adapter
3. Connect plug to power outlet
4. Press power button to turn unit ON and follow on-screen directions



DECLARATION OF CONFORMITY

	To ensure proper use of this product, please read this manual carefully and retain it for future reference. Should the unit require maintenance, contact an authorized service location.
 	<p>WARNING: This symbol indicates the presence of uninsulated dangerous voltage within the product's enclosure that constitutes a risk of electric shock. Do not open the product's case.</p> <p>CAUTION: This symbol indicates you must take care; there is risk of damage to the equipment or to yourself.</p>
 	<p>To prevent fire or shock hazard, do not expose this product to rain or moisture. To reduce the risk of electric shock, DO NOT remove the cover or back. No user serviceable parts are inside. For servicing refer to qualified personnel.</p> <p>Declaration of Conformity (United States Only) This device complies with Part 15 of the FCC Rules. Operation is subject to the following conditions: (1) this device may not cause harmful interference, and (2) this device must accept any interference received, including interference that may cause undesired operation. This equipment has been tested and found to comply with the limits for a Class B digital device, pursuant to Part 15 of the Federal Communication Commission (FCC) Rules. These limits are designed to provide reasonable protection against harmful interference in a residential installation. This equipment generates, uses, and can radiate radio frequency energy, and if not installed and used in accordance with the instructions, may cause harmful interference to radio communications. However, there is no guarantee that interference will not occur in a particular installation. If this equipment does cause harmful interference to radio or television reception, which can be determined by turning the equipment OFF and ON, the user is encouraged to try to correct the interference by one or more of the following measures:</p> <ul style="list-style-type: none"> • Reorient or relocate the receiving antenna. • Increase the separation between the equipment and the receiver. • Connect the equipment to a different circuit from that to which the receiver is connected. • Consult the dealer or an experienced radio/TV technician for help. <p>Part 68 - Compliance Registration This equipment complies with Part 68 of the FCC rules and the requirements adopted by the ACTA. A label on the bottom of this equipment contains, among other information, the Ringer Equivalence Number (REN) and the product identifier. For products approved after July 23, 2001 the product identifier is in the format US:AAAEQ##TXXXX. The digits represented by ## are the REN without a decimal point (e.g. 03 is a REN of 0.3). The REN is used to determine the number of devices that may be connected to a telephone line. For earlier products, the REN is separately shown on the label. If requested, this number must be provided to the telephone company. Excessive RENs on a telephone line may result in the devices not ringing in response to an incoming call. In most, but not all areas, the sum of RENs should not exceed five (5.0). To be certain of the number of devices that may be connected to a line, as determined by the total RENs, contact the local telephone company. This equipment is designed to connect to the telephone network or premises wiring using a compatible modular jack that is Part 68 compliant. An FCC compliant telephone cord and modular plug is provided with the equipment. If this terminal equipment causes harm to the telephone network, the telephone company may request you to disconnect the equipment until the problem is resolved. The telephone company will notify you in advance if temporary discontinuance of service is required. If advance notification is not practical, the telephone company will notify you as soon as possible. You will be advised of your right to file a complaint with the FCC if you believe such action is necessary. If you experience trouble with this equipment, do not try to repair the equipment yourself. The equipment cannot be repaired in the field. Contact your ISP for further instructions. The telephone company may make changes to their facilities, equipment, operations, or procedures that could affect the operation of this equipment. If this happens, the telephone company will provide advance notice in order for you to make the modifications necessary to maintain uninterrupted service. If your home has specially wired alarm equipment connected to the telephone line, ensure that the installation of this equipment does not disable your alarm equipment. If you have questions about what will disable alarm equipment, consult your telephone company or a qualified installer. This equipment cannot be used on public coin phone service provided by the telephone company. Connection of this equipment to party line service is subject to state tariffs.</p>

DECLARATION OF CONFORMITY

	<p>Declaration of Conformity (Europe Only) This product is in conformity with the Council Directives:</p> <ul style="list-style-type: none"> • EMC Directive 2004/108/EC • Low voltage Directive 2006/95/EC
 	<p>Canada Certification Notice</p> <p>ICES-003 Class B Notice This Class B digital apparatus complies with Canadian ICES-003. Avis NMB-003, Classe B Cet appareil numérique de la classe B est conforme à la norme NMB-003 du Canada</p> <p>The Industry Canada label identifies certified equipment. This certification means that the equipment meets certain telecommunications network protective operations and safety requirements as prescribed in the appropriate Terminal Equipment Technical Requirements document(s). The department does not guarantee the equipment will operate to the user's satisfaction. This equipment meets the applicable Industry Canada Terminal Equipment Technical Specification. This is confirmed by the registration number. The abbreviation, IC, before the registration number signifies that registration was performed based on a Declaration of Conformity indicating that Industry Canada technical specifications were met. It does not imply that Industry Canada approved the equipment. The Ringer Equivalence Number (REN) is 0.0. The Ringer Equivalence Number that is assigned to each piece of terminal equipment provides an indication of the maximum number of terminals allowed to be connected to a telephone interface. The termination on an interface may consist of any combination of devices subject only to the requirement that the sum of the Ringer Equivalence Numbers of all the devices does not exceed 5.0. Before installing this equipment, users should ensure that it is permissible to be connected to the facilities of the local Telecommunication Company. The equipment must also be installed using an acceptable method of connection. The customer should be aware that compliance with the above conditions may not prevent degradation of service in some situations. Connection to a party line service is subject to state tariffs. Contact the state public utility commission, public service commission, or corporation commission for information. If your home has specially wired alarm equipment connected to the telephone line, ensure that the installation of this equipment does not disable your alarm equipment. If you have questions about what will disable alarm equipment, consult your telephone company or a qualified installer. If you experience trouble with this equipment, do not try to repair the equipment yourself. The equipment cannot be repaired in the field and must be returned to the manufacturer. Repairs to certified equipment should be coordinated by a representative, and designated by the supplier. Users should ensure, for their own protection, that the electrical ground connections of the power utility, telephone lines, and internal, metallic water pipe system, if present, are connected together. This precaution may be particularly important in rural areas. CAUTION: Users should not attempt to make such connections themselves, but should contact the appropriate electrical inspection authority, or electrician, as appropriate.</p>

NOTES