



# Rio3224-D / Rio1608-D Firmware Update Guide

---

Thank you for choosing a Yamaha product.

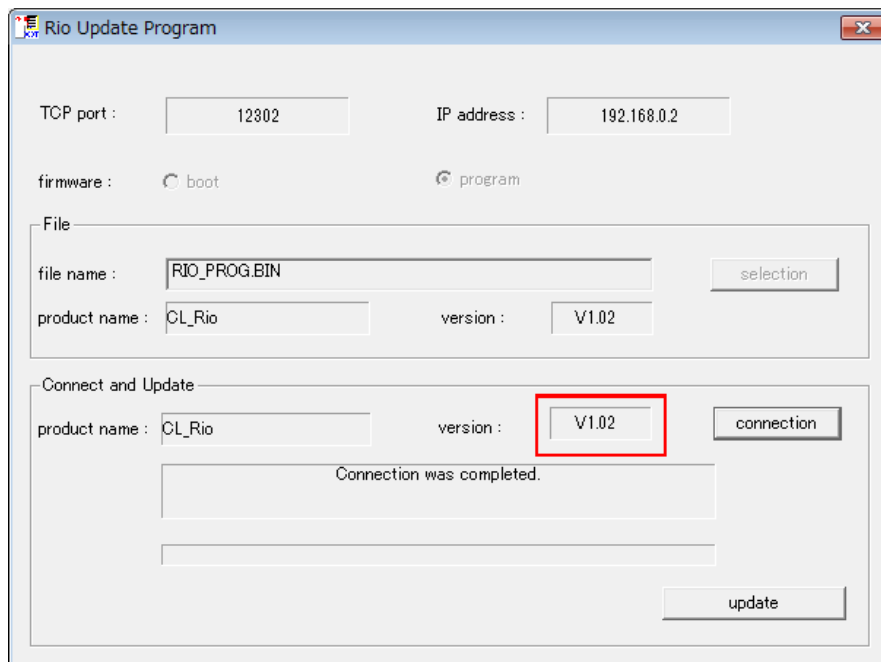
This guide explains how to update the Rio (Rio3224-D, and Rio1608-D) firmware and its built-in Dante module firmware.

## ■ Precautions (Please be sure to read this section first!)

- The user assumes full responsibility for the update.
- Update the firmware components one unit at a time.
- Please note that the device may be damaged if you fail to follow these instructions properly, or turn off the device or disconnect the cable while the update is in progress.
- If the update fails, and the device still does not operate correctly even after you execute the update once again, please contact your Yamaha dealer.
- Yamaha Corporation owns exclusive copyrights for the Rio firmware, its update program, and the update guide.
- Audinate owns exclusive copyrights for the Dante firmware and its update program.
- It is prohibited to duplicate or modify the firmware, software or guides, in part or in their entirety, without permission from the copyright owner.
- The screen shots in this guide are for use with this update procedure only and may be different from the actual screen shots.
- Dante is a registered trademark of Audinate.
- Windows is a registered trademark of Microsoft ® Corporation in the United States and other countries.
- The company names and product names in this document are the trademarks or registered trademarks of their respective companies.

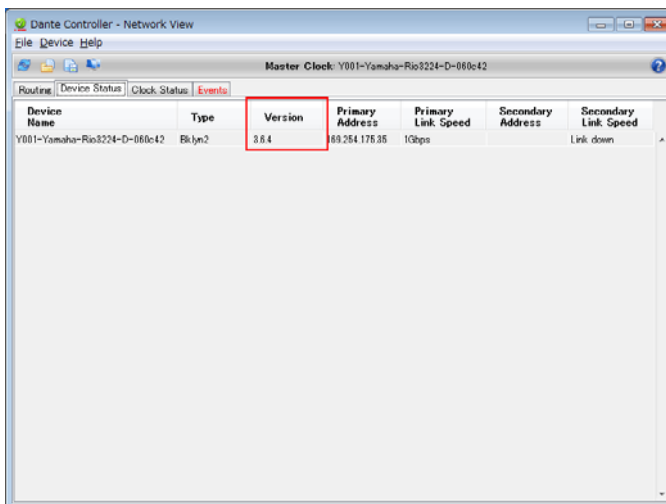
## ■ Checking the version number

- You may check the Rio main firmware version number from the firmware update program (Rio Update Program).

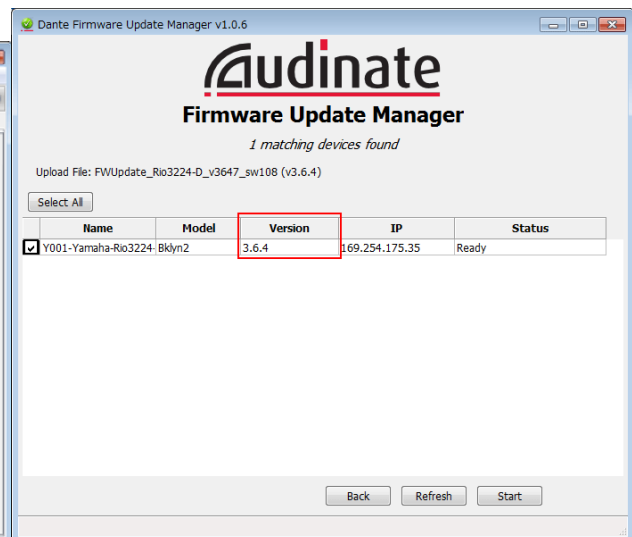


Rio Update Program

- You may check the Dante firmware version number from the Dante Controller or Dante Firmware Update Manager of Audinate.



Dante Controller (Device Status)



Dante Firmware Update Manager

## ■ Preparing for the update

You will need the following items ready to execute the update procedure.

- A Windows computer equipped with the following conditions:

OS	Windows 7	Ultimate / Professional / Home Premium
	Windows XP	Professional SP2 or later / Home Edition SP2 or later
CPU	Intel Pentium 1.2GHz or Intel Celeron 1.7GHz or higher	
HDD	250MB or more	
Connector	An Ethernet connector that supports a data transfer rate of 100Mbps or higher	

- An Ethernet cable (CAT5e or higher recommended. Straight or cross.)

- The Rio firmware

Download the latest firmware from the following URL.

<http://www.yamahaproaudio.com/downloads/>

- The Dante firmware update program

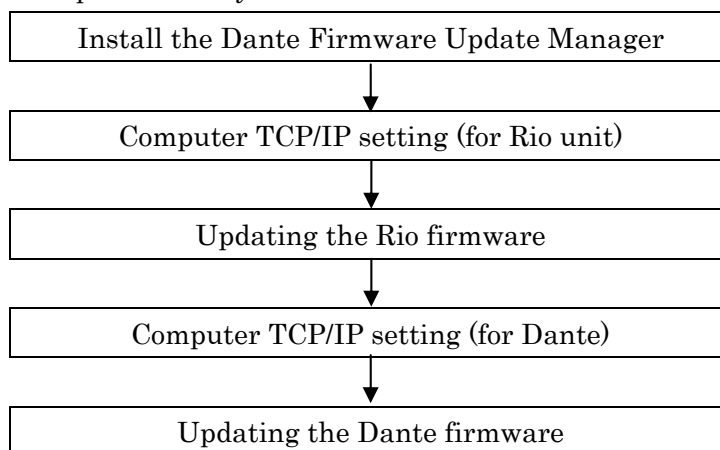
Download the latest program from the following URL.

<http://www.yamahaproaudio.com/downloads/>

## ■ Update procedure sequence

Update each firmware component in the following sequence.

To update more than one Rio unit, configure “Computer TCP/IP setting (for Rio unit)” and perform “Rio unit firmware update” one by one. Then, configure “Computer TCP/IP setting (for Dante)” and perform “Dante firmware update” one by one.



If there are 2 computers, you may use one for Rio unit firmware update and the other for Dante firmware update so that you can perform the work without switching of TCP/IP setting. To update more than one Rio firmware applications, it is recommended to use 2 computers for update.

## ■ Install the Dante Firmware Update Manager

Before you update the Dante firmware, you must install the Dante Firmware Update Manager. Double-click the Dante Firmware Update Manager installer downloaded in “Preparing for the update” (DanteFirmwareUpdateManager-x.x.x.msi) and follow the on-screen instructions to install the firmware.

x.x.x represents the version number of the Dante Firmware Update Manager.

In addition, extract the Dante firmware (extension: .dnt) from the compressed file.

The Dante firmware does not operate normally if its path contains any multi-byte character (including Japanese characters). If you use a directory name containing any multi-byte character in your computer, store the firmware update files in a directory that consists only of ASCII characters (e.g. C:\temp).

### **NOTE**

- For Windows 7, the “Windows Security” dialog box may appear. In such case, click [Install this driver software anyway].
- You may be prompted to restart the computer after the installation is complete. Before proceeding to update, restart the computer.
- In the middle of installation of the Dante Firmware Update Manager, you may be prompted to install Bonjour. In such case, download the Bonjour installer from the URL presented by the installer and install it.

## ■ Computer TCP/IP setting (for Rio unit)

To update Rio unit firmware, configure computer TCP/IP settings.

### Windows 7

1. Select [Start] → [Control Panel], then click or double-click [Network and Sharing Center] or [View network status and tasks].

The "Network and Sharing Center" is displayed.

2. Click [Manage network connection] or [Change Adapter settings] from the "Tasks" list located in the left side of "Network and Sharing Center" window, then double-click [Local Area Connection].

The "Local Area Connection Status" dialog box will be displayed.

**NOTE**

- The "User Account Control" dialog box may appear. Click [Continue] or [Yes].
- If the "Local Area Connection properties" dialog box appears, skip ahead to step 4.

3. Click [Properties].

The "Local Area Connection properties" dialog box will be displayed.

**NOTE**

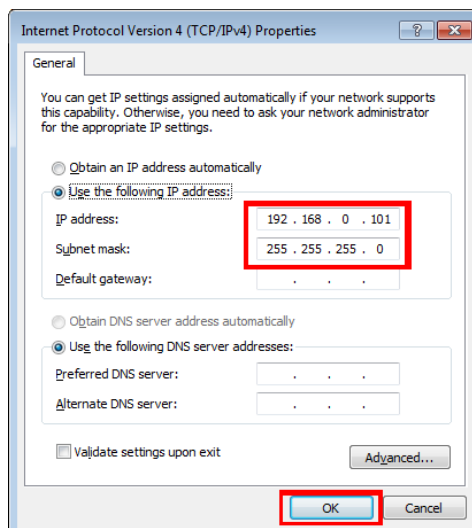
- The "User Account Control" dialog box may appear. Click [Continue] or [Yes].

4. Select [Internet Protocol Version 4 (TCP/IPv4)], then click [Properties].

The "Internet Protocol Version 4(TCP/IPv4) Protocol" dialog box will be displayed.

5. Click [Use the following IP address].

6. Enter your computer's IP address "192.168.0.101" into [IP address], and "255.255.255.0" into [Subnet mask].



**NOTE**

- If you specify other values for the IP address, you will be unable to update Rio firmware.

7. Click [OK].

## Windows XP

1. Select [Start] → [Control Panel].

The "Control Panel" is displayed.

2. If the control panel appears as category view, click [Switch to Classic View].

3. Double-click [Network Connections] → [Local Area Connection].

The "Local Area Connection Status" dialog box will be displayed.

**NOTE**

- If the "Local Area Connection properties" dialog box appears, skip ahead to step 5.

4. Click [Properties].

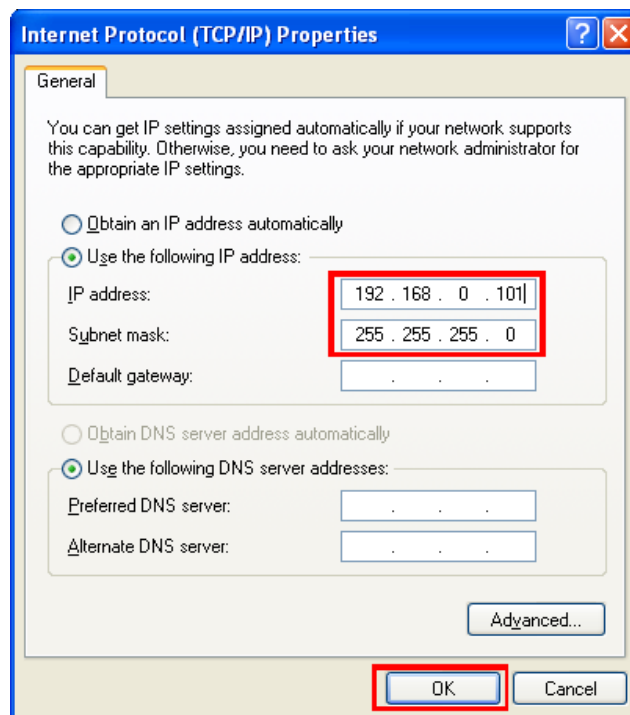
The "Local Area Connection Properties" dialog box will be displayed.

5. Select [Internet Protocol (TCP/IP)], then click [Properties].

The "Internet Protocol (TCP/IP) Properties" dialog box will be displayed.

6. Click [Use the following IP address].

7. Enter your computer's IP address "192.168.0.101" into [IP address], and "255.255.255.0" into [Subnet mask].



**NOTE**

- If you specify other values for the IP address, you will be unable to update Rio firmware.

8. Click [OK].

## ■ Updating the Rio firmware

This section explains how to update the Rio firmware.

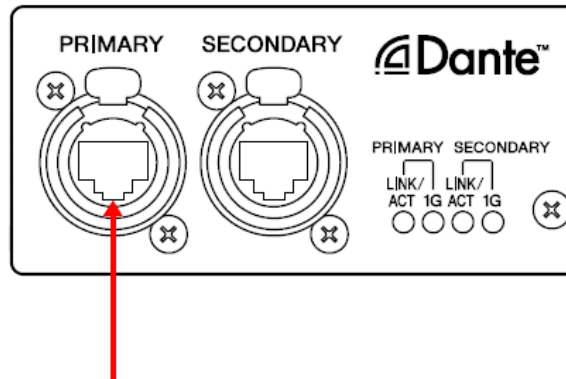
Before you start updating the firmware, decompress the downloaded compressed file. Place “RIO\_PROG.bin,” “update.exe” and “update.ini” in the same folder.

### NOTE

For information about messages displayed by the Rio firmware update program, refer to “[Error Message List \(Rio Update Program\)](#)” at the end of this guide.

- Before starting the update program, quit all other programs. While the update is in progress, do not start any other programs or switch between windows.
- If your computer enters Sleep or Energy Save mode, data transfer to the device may stop. Therefore, you should disable these functions to prevent this from happening. We also recommend that you do not use any screen saver or similar background programs.

1. Turn off the power to the Rio.
2. Connect the Dante [PRIMARY] connector on the rear panel of the Rio unit to the Ethernet connector on the computer using an Ethernet cable.



3. Take note of the dip switch settings on the Rio unit front panel.  
Follow the procedure below to change dip switch settings. Take note of the original dip switch settings in order to restore the settings when the Dante firmware update is completed.

4. Pull the dip switch 8 on the Rio unit front panel down (ON) and turn the power on with the other switch remaining in up their positions (OFF).

The all +48V indicators start flashing and the unit is activated in the update mode.



**5. Double-click [update.exe].**

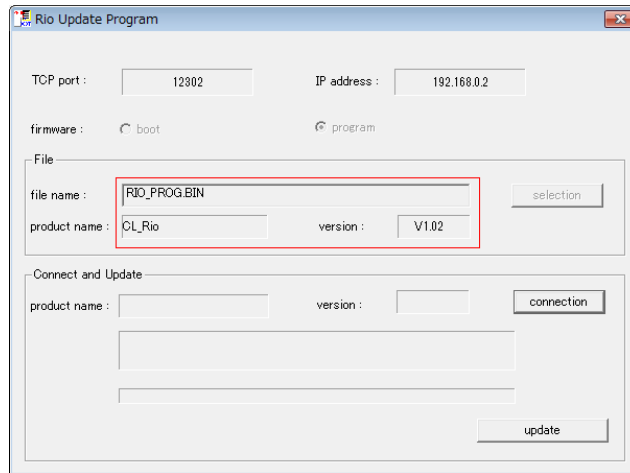
The Rio Update Program will start up.

Make sure that the fields in the "File" section indicate as follows:

file name : RIO\_PROG.bin

product name : CL\_Rio

version : Version number to which the firmware will be updated



**NOTE**

- When running under Windows 7, the "User Account Control" dialog box may appear. Click [Continue] or [Yes].

**6. Click the [Connection] button in the "Connect and Update" column.**

The "product name" field will display "CL\_Rio," and the "version" field will display the version number of the Rio firmware.

**NOTE**

- If these fields are empty, your computer may not be properly connected to the Rio. Please make sure that the cable is not disconnected or damaged, that the TCP/IP settings are correct, and that the Rio has started in Update mode.

**7. Click the [Update] button in the "Connect and Update" column.**

The update operation will begin.

**CAUTION**

The update will take about 30 seconds. During the update operation, do not turn off the power to the unit or disconnect the cable. If update fails due to disconnection of the power cable during the update, or due to other reasons, the device may become inoperative.

**8. When the "Connect and Update" section displays the message "Updating was completed. Close this Update Program" click the [X] button in the upper-right corner of the program window to close the program.**

**9. Turn off the power to Rio.**



## ■ Computer TCP/IP setting (for Dante)

To update Dante firmware, configure computer TCP/IP settings.

### Windows 7

1. Select [Start]→[Control Panel], then click or double-click [Network and Sharing Center] or [View network status and tasks].

The "Network and Sharing Center" is displayed.

2. Click [Manage network connection] or [Change Adapter settings] from the "Tasks" list located in the left side of "Network and Sharing Center" window, then double-click [Local Area Connection].

The "Local Area Connection Status" dialog box will be displayed.

#### **NOTE**

- The "User Account Control" dialog box may appear. Click [Continue] or [Yes].
- If the "Local Area Connection properties" dialog box appears, skip ahead to step 4.

3. Click [Properties].

The "Local Area Connection properties" dialog box will be displayed.

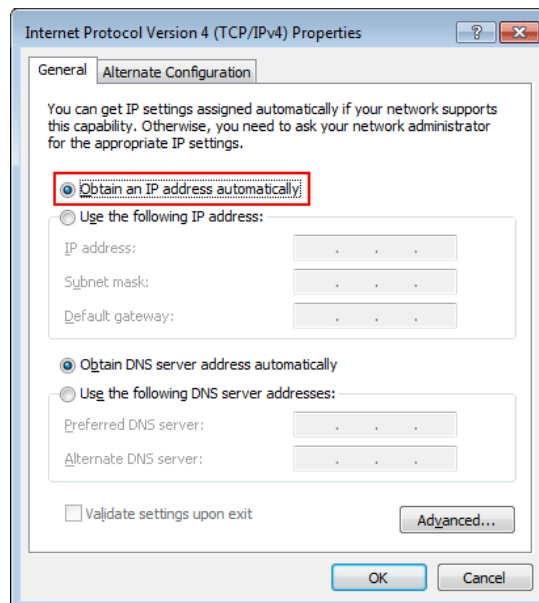
#### **NOTE**

- The "User Account Control" dialog box may appear. Click [Continue] or [Yes].

4. Select [Internet Protocol Version 4 (TCP/IPv4)], then click [Properties].

The "Internet Protocol Version 4(TCP/IPv4) Protocol" dialog box will be displayed.

5. Click [Obtain an IP address automatically].



6. Click [OK].

## Windows XP

1. Select [Start] → [Control Panel].

The "Control Panel" is displayed.

2. If the control panel appears as category view, click [Switch to Classic View].

3. Double-click [Network Connections] → [Local Area Connection].

The "Local Area Connection Status" dialog box will be displayed.

**NOTE**

- If the "Local Area Connection properties" dialog box appears, skip ahead to step 5.

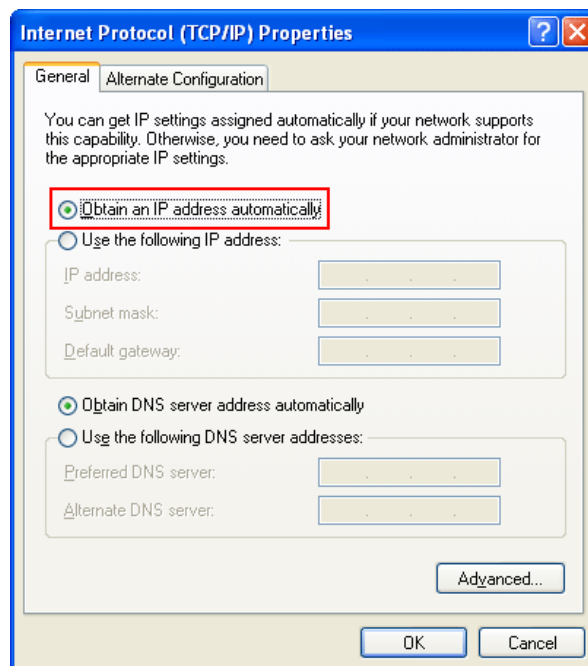
4. Click [Properties].

The "Local Area Connection Properties" dialog box will be displayed.

5. Select [Internet Protocol (TCP/IP)], then click [Properties].

The "Internet Protocol (TCP/IP) Properties" dialog box will be displayed.

6. Click [Obtain an IP address automatically].



7. Click [OK].

## ■ Updating the Dante firmware

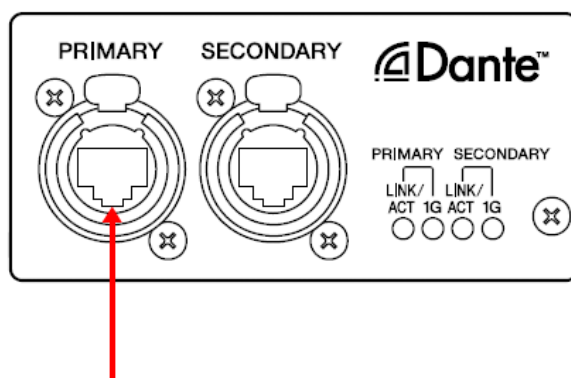
Described below are the procedures to update the Dante module firmware integrated in the Rio unit.

### NOTE

• For details of the Dante Firmware Update Manager, refer to “User Guide Dante Firmware Update Manager” stored in the compressed file folder.

1. **Connect the Dante [PRIMARY] connector on the rear panel of the Rio unit to the Ethernet connector on the computer using an Ethernet cable.**

Be sure to directly connect the computer and the Rio unit, and do not connect any other Dante device to the computer.



2. **Turn on the power to the Rio.**

The all +48V indicators start flashing and the unit is activated in the update mode.

If it is not activated in the update mode, turn the power off, pull the dip switch 8 down (ON) and turn the power on with the other switch remaining in up their positions (OFF).

3. **Select [Start]→[All programs]→[Audinate]→[Dante Firmware Update Manager]→[Dante Firmware Update Manager].**

The Dante Firmware Update Manager will start up.

Check that the version number is 1.0.6 or higher from the title bar.

### NOTE

• When running under Windows 7, the "User Account Control" dialog box may appear. Click [Continue] or [Yes].

4. **Click [Update Dante Firmware].**

5. **Click [Browse] and select “Rio3224D-vxxx-swyyy.dnt” in case of Rio3224-D or “Rio1608D-vxxx-swyyy.dnt” in case of Rio1608-D. Then click [Open].**

xxx and yyy represent the firmware version number.

### NOTE

• The Dante firmware does not operate normally if its path contains any multi-byte character (including Japanese characters). If you use a directory name containing any multi-byte character in your computer, store the firmware update files in a directory that consists only of ASCII characters (e.g. C:\temp).

### CAUTION

**If update files other than Rio are applied, the device becomes inoperative. In such case, you need to revert the device firmware to the original version by using a failsafe recovery. Be sure to ensure compatibility of the update files with Rio.**

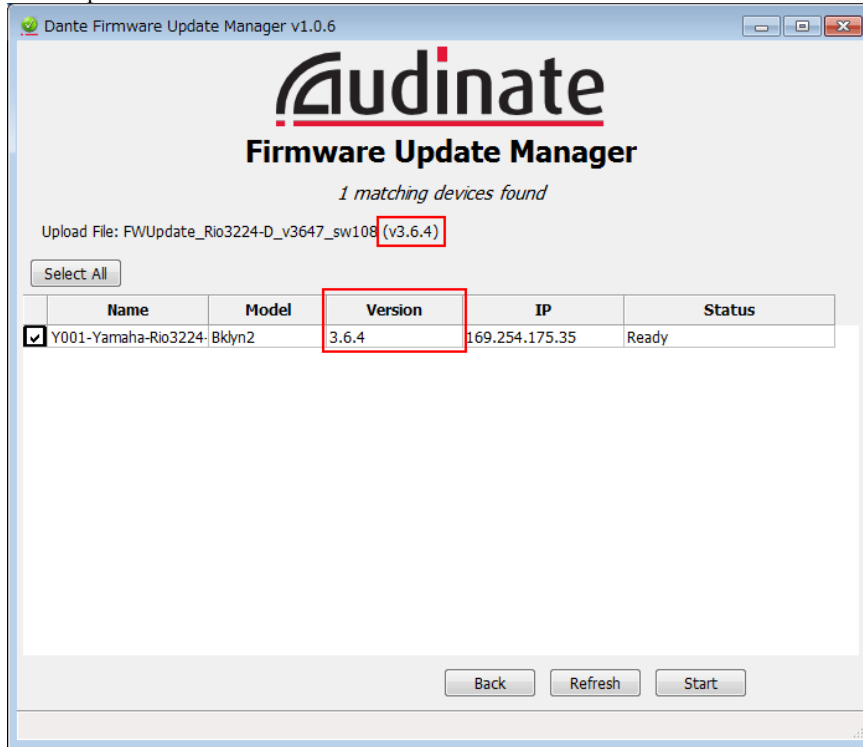
6. Click [Next].

**NOTE**

- “upgrade\_tool.exe” may be blocked by the Windows Firewall. For Windows XP, click [Unblock] in such case. For Windows 7, select the [Private Network] checkbox and click [Allow access].

7. Check the Rio to update.

Check the version of the update files and the version number indicated in the Rio line.



**NOTE**

- If it is not indicated, click [Refresh]. It is still not indicated after that, the computer and the Rio is not connected properly. Check that the cable does not come off or is not disconnected, TCP/IP is properly configured, and the Rio is activated.

8. Click [Start].

The update operation will begin.

“Updating(n/m)” appears in the Status field during updating. “Done” is displayed once update is completed.

**CAUTION**

Update takes 2 to 4 minutes. During the update operation, do not turn off the power to the unit or disconnect the cable. If update fails due to disconnection of the power cable during the update, or due to other reasons, the device may become inoperative.

**NOTE**

- If update is not completed after 5 minutes, or update failure indication appears, click X at the upper right corner of Dante Firmware Update Manager to exit the program **without turning the Rio power off**, and restart the procedure from the step 4. If update still fails, follow the instructions stated in “About Failsafe Mode” to perform the recovery processing.

9. Turned off the power to the Rio and dip switch setting is returned to the original setup.

Please return a setup of dip switch settings to a setup whose note was made in the update step 3 of the "Updating the Rio firmware."

The firmware update is now complete.

## ■ About Failsafe Mode

Though software must be loaded from a flash memory drive during operations to use the Dante module integrated in the Rio, data in a flash memory drive may be crashed as with the other storage devices.

In many cases, such data crash is caused by turning the Rio power off during firmware upgrading as with the other devices using flash memory drives.

The Dante module have a specially protected flash drive section in order for recovery from such condition. When the main section is damaged, the program stored in the area is activated and the Dante module goes into the “failsafe mode.”

To restore the Dante module in the failsafe mode, you need to send a recovery image from the Firmware Update Manager.

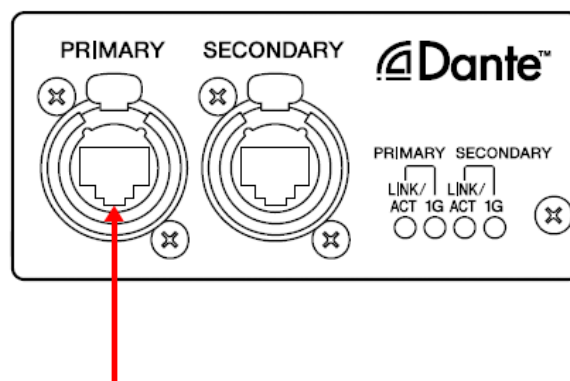
To check if the Dante module is in the failsafe mode, use the Dante Controller.

If the Dante module is in the failsafe mode, the respective device is displayed in red in the network grid view of the Dante Controller (version 3.1.x or higher).

Father, right side of the [SYSTEM] indicator on the Rio unit periodically flashes in red twice.

Described below are the procedures to recover the Dante module integrated in the Rio unit.

1. Turn off the power to the computer and the Rio.
2. Separate the Rio from the Dante network.
3. Connect the Dante [PRIMARY] connector on the rear panel of the Rio unit to the Ethernet connector on the computer using an Ethernet cable.



4. Turn the computer power on and login to Windows with administrative privileges.
5. Turn on the power to the Rio.

6. Select [Start]→[All programs]→[Audinate]→[Dante Firmware Update Manager]→[Dante Firmware Update Manager ].

The Dante Firmware Update Manager will start up.

**NOTE**

- When running under Windows 7, the "User Account Control" dialog box may appear. Click [Continue] or [Yes].

7. Click [Failsafe Recovery].

8. Check the detected Rio.

9. Click [Start].

The recovery operation will begin.

10. When the “Recovery image loaded” dialog box appears, click [OK].

11. Exit the Dante Firmware Update Manager and then take the steps 3 through 7 described in “Updating the Dante firmware.”

Click [Refresh] and check the version is displayed in several minutes. Please click [Refresh] again after waiting for a while, when not displayed.

12. When Version appears, click [Start].

The update operation will begin.

“Updating(n/m)” appears in the Status field during updating. “Done” is displayed once update is completed.



Update takes 2 to 4 minutes. During the update operation, do not turn off the power to the unit or disconnect the cable. If update fails due to disconnection of the power cable during the update, or due to other reasons, the device may become inoperative.

**NOTE**

- If update is not completed after 5 minutes, or update failure indication appears, click X at the upper right corner of Dante Firmware Update Manager to exit the program **without turning the Rio power off**, and restart the procedure from the step 4. If update still fails, follow the instructions stated in “About Failsafe Mode” to perform the recovery processing

13. Restart the Rio.

Now recovery and firmware update are completed.

## ■ Error Message List(Rio Update Program)

Error messages (that consist of an error number and a string in English) for the Rio Update Program may be displayed on the computer.

This section explains the error numbers, the English strings, and the appropriate action to take.

### NOTE

- If the same error message appears each time you try to update, the device may need repairing, in which case you should contact your Yamaha dealer.

番号	概要	対処方法
[ERROR:001]~[ERROR:006]、 [ERROR:101]~[ERROR:107]	An error occurred while communicating with the device.	Make sure that the computer is connected to the Rio correctly, then restart the Rio Update Program and the Rio unit. (→P.6)
[ERROR:009]	The Rio is not engaged in Update mode.	After turning the Rio power off, pull the dip switch 8 down (ON) and 1 through 7 up (OFF) and then turn the power on. (→P.5)
[ERROR:108]、 [ERROR:109]	Information on the Rio could not be obtained.	The device may need repairing, in which case you should contact your Yamaha dealer.
[ERROR:111]	The firmware data file was not found.	Place the "RIO_PROG.bin" file in the folder that contains the "update.exe" file.(→P.6)