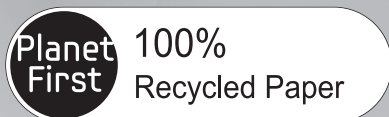




# Refrigerator user manual



This manual is made with 100% recycled paper.

English

imagine the possibilities

Thank you for purchasing a Samsung product.  
To receive a more complete service,  
please register your product at  
[www.samsung.com/register](http://www.samsung.com/register)

Free Standing Appliance






# safety information



## SAFETY INFORMATION

- Before operating the appliance, please read this manual thoroughly and retain it at a safe place near the appliance for your future reference.
- Use this appliance only for its intended purpose as described in this instruction manual. This appliance is not intended for use by persons (including children) with reduced physical, sensory or mental capabilities, or lack of experience and knowledge, unless they have been given supervision or instruction concerning use of the appliance by a person responsible for their safety.
- Warnings and Important Safety Instructions in this manual do not cover all possible conditions and situations that may occur. It is your responsibility to use common sense, caution, and care when installing, maintaining, and operating your appliance.
- Because these following operating instructions cover various models, the characteristics of your refrigerator may differ slightly from those described in this manual and not all warning signs may be applicable. If you have any questions or concerns, contact your nearest service center or find help and information online at [www.samsung.com](http://www.samsung.com).

### Important safety symbols and precautions :

|   |   |
|---|---|
|  | Hazards or unsafe practices that may result in <b>severe personal injury or death.</b>          |
|  | Hazards or unsafe practices that may result in <b>minor personal injury or property damage.</b> |
|  | Do NOT attempt.   |
|  | Do NOT disassemble.   |
|  | Do NOT touch.   |
|  | Follow directions carefully.  |
|  | Unplug the power plug from the wall socket.   |
|  | Make sure the machine is grounded to prevent electric shock.                                    |

02\_safety information

|   |                                   |
|---|-----------------------------------|
|  | Call the contact center for help. |
|  | Note.                             |

These warning signs are here to prevent injury to you and others.

Please follow them explicitly.

After reading this section, keep it in a safe place for future reference.

### CE Notice

This product has been determined to be in compliance with the Low Voltage Directive (2006/95/EC), the Electromagnetic Compatibility Directive (2004/108/EC) and the Eco-Design Directive (2009/125/EC) implemented by Regulation (EC) No 643/2009 of the European Union.



## SEVERE WARNING SIGNS FOR TRANSPORTATION AND SITE



- When transporting and installing the appliance, care should be taken to ensure that no parts of the refrigerating circuit are damaged.
- Refrigerant leaking from the pipe work could ignite or cause an eye injury. If a leak is detected, avoid any naked flames or potential sources of ignition and air the room in which the appliance is standing for several minutes.
- In order to avoid the creation of a flammable gas-air mixture if a leak in the refrigerating circuit occurs, the size of the room in which the appliance may be sited depends on the amount of refrigerant used.
- Never start up an appliance showing any signs of damage. If in doubt, consult your dealer. The room where the refrigerator will be sited must be 1m<sup>3</sup> in size for every 8g of R600a refrigerant inside the appliance. The amount of refrigerant in your particular appliance is shown on the identification plate inside the appliance.



## SEVERE WARNING SIGNS FOR INSTALLATION



- Do not install the refrigerator in a damp place or place where it may come in contact with water.
- Deteriorated insulation of electrical parts may cause an electric shock or fire.
- Do not place this refrigerator in direct sunlight or expose to the heat from stoves, room heaters or other appliance.
- Do not plug several appliances into the same multiple power board.  
The refrigerator should always be plugged into its own individual electrical which has a voltage rating that matched the rating plate.
- This provides the best performance and also prevents overloading house wiring circuits, which could cause a fire hazard from overheated wires.
- If the wall socket is loose, do not insert the power plug.
- There is a risk of electric shock or fire.
- Do not use a cord that shows cracks or abrasion damage along its length or at either end.
- Do not bend the power cord excessively or place heavy articles on it.
- Do not use aerosols near the refrigerator.
- Aerosols used near the refrigerator may cause an explosion or fire.



- This refrigerator must be properly installed and located in accordance with the manual before it is used.
- Connect the power plug in proper position with the cord hanging down.
- If you connect the power plug upside down, wire can get cut off and cause fire or electric shock.
- Make sure that the power plug is not squashed or damaged by the back of the refrigerator.
- When moving the refrigerator, be careful not to roll over or damage the power cord.
- This constitutes a fire hazard.
- The appliance must be positioned so that the plug is accessible after installation.



- The refrigerator must be grounded.
- You must ground the refrigerator to prevent any power leakages or electric shocks caused by current leakage from the refrigerator.
- Never use gas pipes, telephone lines or other potential lightening rods as ground.
- Improper use of the ground plug can result in electric shock.



- If the power cord is damaged, have it replaced immediately by the manufacturer or its service agent.
- The fuse on the refrigerator must be changed by a qualified technician or service company.
- Failing to do so may result in electric shock or personal injury.



## CAUTION SIGNS FOR INSTALLATION



- Keep ventilation opening in the appliance enclosure or mounting structure clear of obstruction.
- Allow the appliance to stand for 2 hours after installation.



## SEVERE WARNING SIGNS FOR USING



- Do not insert the power plug with wet hands.
- Do not store articles on the top of the appliance.
- When you open or close the door, the articles may fall and cause personal injury and/or material damage.



## SEVERE WARNING SIGNS FOR USING (CONT'D)



- Do not put items filled with water on the refrigerator.
- If spilled, there is a risk of fire or electric shock.
- Do not let children hang on the door.
- Failure to do so may cause serious personal injury.
- Do not leave the doors of the refrigerator open while the refrigerator is unattended and do not let children enter inside of the refrigerator.
- There is a risk of children entrapment and serious personal injury because of low temperature.
- Never put fingers or other objects into the dispenser hole.
- Failure to do so may cause personal injury or material damage.
- Do not store volatile or flammable substances such as benzene, thinner, alcohol, ether or LP gas in the refrigerator.
- The storage of any of such products may cause explosions.
- Do not store low temperature-sensitive pharmaceuticals products, scientific materials or other low temperature-sensitive products in the refrigerator.
- Products that require strict temperature controls must not be stored in the refrigerator.
- Do not place or use electrical appliance inside the refrigerator, unless they are of a type recommended by the manufacturer.
- Do not use a hair dryer to dry the inside of the refrigerator.  
Do not place a lighted candle in the refrigerator for removing bad odors.
- This may result in electric shock or fire.
- Do not touch the inside walls of the freezer or products stored in the freezer with wet hands.
- This may cause frostbite.
- Do not use mechanical devices or any other means to accelerate the defrosting process, other than those recommended by the manufacturer.
- Do not damage the refrigerant circuit.



- This product is intended only for the storage of food in a domestic environment.
- Bottles should be stored tightly together so that they do not fall out.

- If a gas leak is detected, avoid any naked flames or potential sources of ignition and air the room in which the appliance is standing for several minutes.
- Use only the LED Lamps provided by manufacturer or service agents.
- Children should be supervised to ensure that they do not play with and/or climb into the appliance.



- Do not disassemble or repair the refrigerator by yourself.
- You run risk of causing a fire, malfunction and/or personal injury.  
In case of malfunction, please contact your service agents.



- If the appliance generates a strange noise, a burning or smell or smoke, unplug the power plug immediately and contact your nearest service center.
- Failing to do so may result in electric or fire hazards.  
Keep ventilation opening in the appliance enclosure or mounting structure clear of obstruction.
- If you experience difficulty when changing the light, contact service agents.
- If the products equipped with LED Lamp, do not disassemble Lamp Cover and LED Lamp by yourself.
- Please contact your service agents.
- If any dust or water is in refrigerator, pull out power plug and contact your Samsung Electronics service center.
- There is a risk of fire.



## CAUTION SIGNS FOR USING



- To get best performance of product,
  - Do not place foods too closely in front of the vents at the rear of the appliance as it can obstruct free air circulation in the refrigerator compartment.
- Wrap the food up properly or place it in airtight containers before put it into the refrigerator.
- Do not place carbonated or fizzy drinks in the freezer compartment.  
Do not put bottles or glass containers in the freezer.
- When the contents freeze, the glass may break and cause personal injury and property damage.

- Do not change the functionality of or modify the refrigerator.
- Changes or modifications may result in personal injury and/or property damage.  
Any changes or modifications performed by a 3rd party on this completed appliance is neither covered under Samsung warranty service, nor is Samsung responsible for safety issues and damages that result from 3rd party modifications.
- Do not block air holes.
- If the air holes are blocked, especially with a plastic bag, the refrigerator can be over cooled. If this cooling period lasts too long, the water filter may break and cause water leakage.
- Do not put any newly introduced food for freezing near to already frozen food.
- Please observe maximum storage times and expiry dates of frozen goods.
- Fill water tank, ice tray, water cubes only with potable water.

## CAUTION SIGNS FOR CLEANING AND MAINTENANCE



- Do not directly spray water inside or outside the refrigerator.
- There is a risk of fire or electric shock.
- Do not spray inflammable gas near the refrigerator.
- There is a risk of explosion or fire.
- Do not spray cleaning products directly on the display.
- Printed letters on the display may come off.



- Remove any foreign matter or dust from the power plug pins.  
But do not use a wet or damp cloth when cleaning the plug, remove any foreign material or dust from the power plug pins.
- Otherwise there is a risk of fire or electric shock.



- Unplug the refrigerator before cleaning and performing maintenance.



## SEVERE WARNING SIGNS FOR DISPOSAL



- Ensure that none of the pipes on the back of the appliance are damaged prior to disposal.
- R600a or R134a is used as a refrigerant. Check the compressor label on the rear of the appliance or the rating label inside the refrigerator to see which refrigerant is used for your refrigerator.  
When this product contains flammable gas (Refrigerant R600a), contact your local authority in regard to safe disposal of this product. Cyclopentane is used as an insulation blowing gas. The gases in insulation material require special disposal procedure.  
Please contact your local authorities in regard to the environmentally safe disposal of this product. Ensure that none of the pipes on the back of the appliances are damaged prior to disposal. The pipes shall be broke in the open space.
- If the appliance contains iso-butane refrigerant (R600a), a natural gas with high environmental compatibility that is, however, also combustible. When transporting and installing the appliance, care should be taken to ensure that no parts of the refrigerating circuit are damaged.
- When disposing of this product or other refrigerators, remove the door/door seals, door latch so that small children or animals cannot become trapped inside.  
Leave the shelves in place so that children may not easily climb inside.  
Children should be supervised to ensure that they do not play with the old appliance.
- Please dispose of the packaging material for this product in an environmentally friendly manner.



## ADDITIONAL TIPS FOR PROPER USAGE

- In the event of a power failure, call the local office of your Electricity Company and ask how long it is going to last.
- Most power failures that are corrected within an hour or two will not affect your refrigerator temperatures.  
However, you should minimize the number of door openings while the power is off.
- Should the power failure last more than 24 hours, remove all frozen foods.
- If keys are provided with the refrigerator, the keys should be kept out of the reach of children and not in vicinity of the appliance.
- The appliance might not operate consistently (possibility of temperature becoming too warm in refrigerator) when sited for an extended period of time below the cold end of the range of temperature for which the refrigerating appliance is designed.
- Do not store food which spoils easily at low temperature, such as bananas, melons.
- Your appliance is frost free, which means there is no need to manually defrost your appliance, as this will be carried out automatically.
- Temperature rising during the defrost can comply with ISO requirement.  
But if you want to prevent an undue rise in the temperature of the frozen food while defrosting the appliance, please wrap the frozen food in several layers of newspaper.
- Any increase in temperature of frozen food during defrosting can shorten its storage life.

## Saving Energy Tips

- Install the appliance in a cool, dry room with adequate ventilation.  
Ensure that it is not exposed to direct sunlight and never put it near a direct source of heat (radiator, for example).
- Never block any vents or grilles on the appliance.
- Allow warm food to cool down before placing it in the appliance.
- Put frozen food in the refrigerator to thaw.  
You can then use the low temperatures of the frozen products to cool food in the refrigerator.
- Do not keep the door of the appliance open for too long when putting food in or taking food out.  
The shorter time for which the door is open, the less ice will form in the freezer.
- Clean the rear of the refrigerator regularly.  
Dust increases energy consumption.
- Do not set temperature colder than necessary.
- Ensure sufficient air exhaust at the refrigerator base and at the back wall of the refrigerator.  
Do not cover air vent openings.
- Allow clearance to the right, left, back and top when installing.  
This will help reduce power consumption and keep your energy bills lower.

# contents

|                                    |    |
|------------------------------------|----|
| SETTING UP YOUR REFRIGERATOR ..... | 07 |
| OPERATING YOUR REFRIGERATOR .....  | 13 |
| TROUBLESHOOTING .....              | 19 |

# setting up your refrigerator

## GETTING READY TO INSTALL THE REFRIGERATOR

Congratulations on your purchase of this Samsung Refrigerator.

We hope you enjoy state-of-the-art features and efficiencies that this new appliance offers.

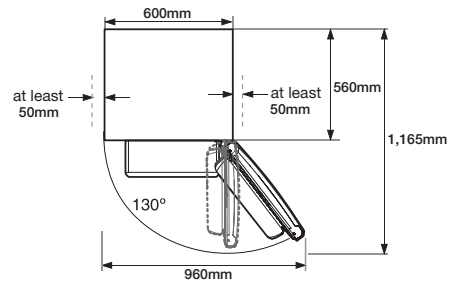
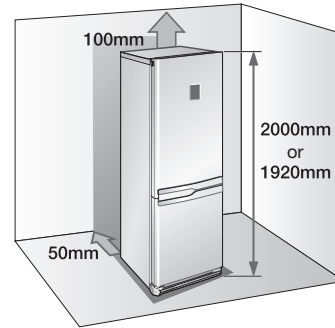
- This refrigerator must be properly installed and located in accordance with the manual before it is used.
- Use this appliance only for its intended purpose as described in this instruction manual.
- We strongly recommend that any servicing be performed by a qualified individual.
- Please dispose of the packaging material for this product in an environmentally friendly manner.


 **WARNING** Pull the power plug out of the socket before changing the interior light of the refrigerator.


- Otherwise, there is a risk of electric shock.

### Selecting the best location for the refrigerator

- A location without direct exposure to sunlight.
- A location with flat floor surface.
- A location with enough space for the refrigerator door to open easily.
- Allow sufficient space to the right, left, back and top for air circulation.  
If the refrigerator does not have enough space, the internal cooling system may not work properly.
- Please ensure that appliance can be moved freely in the event of maintenance & service.



-  • Height of the product may be different depending on the models.
- Allow clearance to the right, left, back and top when installing.  
This will help reduce power consumption and keep your energy bills lower.
- Do not install the refrigerator in a place with the temperature lower than 10°C.

 **CAUTION** Pull the unit straight out when installing, servicing or cleaning behind the refrigerator and push it straight back after work is complete.  
Make sure your floor can support fully loaded refrigerator.

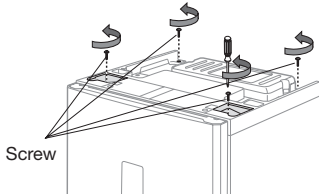
# REVERSING THE REFRIGERATOR DOOR

**WARNING** Before you reverse the refrigerator door, make sure to unplug the refrigerator. If this operation is not performed by After sales service, it is not covered by the warranty.

## Required Tools

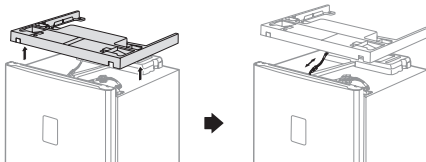
| Not provided                  |                                       |   |
|-------------------------------|---------------------------------------|---|
|                               |                                       |   |
| Phillips Head Driver (+)      | Flat Head Driver (-)                  | 10mm Socket Wrench (for bolts)                  |
| Not provided                  |                                       | Additional part                                 |
|                               |                                       |   |
| 11mm Wrench (for hinge shaft) | 3/16" Allen Wrench (for middle hinge) | Top Left Hinge Cover (Underneath the Top Cover) |

1. Remove 4 screws on the Top cover of the refrigerator.



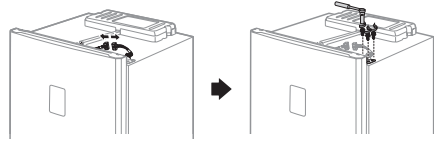
**WARNING** Make sure your refrigerator is unplugged before handling electrical wires.

2. Remove the Top cover. Make sure to disconnect the wire underneath the Top cover.



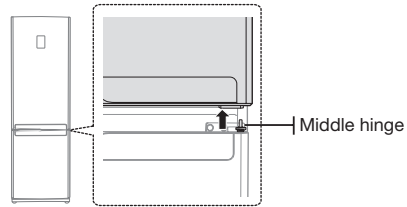
**CAUTION** Be careful not to damage the electrical wires when removing the Top cover.

3. Disconnect the wire and then remove 3 bolts on the top of the refrigerator.



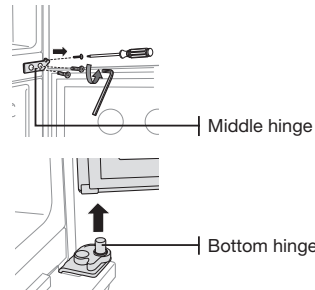
**CAUTION** Make sure the Fridge door is closed firmly.

4. Remove the Fridge door from the Middle hinge by carefully lifting the door straight up.



**CAUTION** Fridge door is heavy, be careful not to injure yourself when removing the Fridge door.

5. Disassemble the Middle hinge by removing 2 bolts and a screw on the right side. Remove the Freezer door from the Bottom hinge by carefully lifting the door straight up.

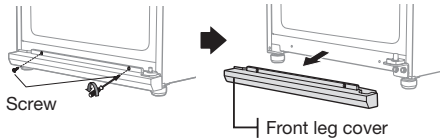


**CAUTION** Freezer door is heavy, be careful not to injure yourself when removing the Freezer door.

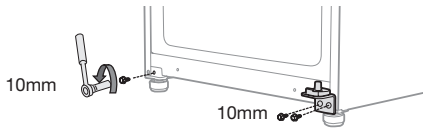


## REVERSING THE REFRIGERATOR DOOR (CONT'D)

6. Separate the Front leg cover after removing 2 screws.

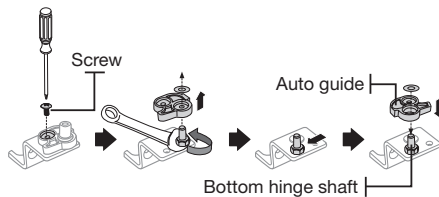


7. Unscrew 2 bolts tightening the Bottom hinge and also unscrew a bolt on the left side by the front leg where removed Bottom hinge will be attached.

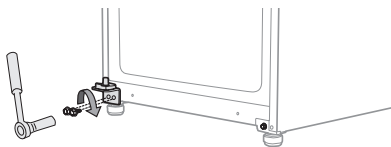


Before removing the Bottom hinge, slightly turn the front legs clockwise for easier disassembling and assembling.

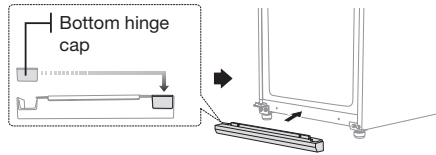
8. Switch the position of the Bottom hinge shaft. Remove the screw on the Auto guide and remove the Bottom hinge shaft with 11mm wrench. Attach the Bottom hinge shaft on the left and put the reversed Auto Guide back.



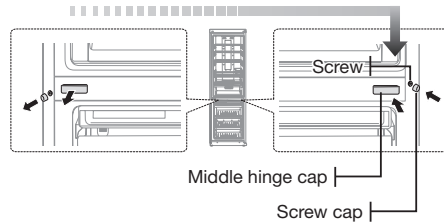
9. Attach the Bottom hinge on the bottom left side of the refrigerator where a bolt was previously removed in step 8. Screw remaining bolt on the bottom right side of the refrigerator for the future usage.



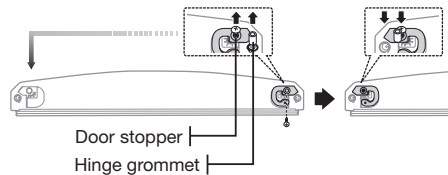
10. Switch the side of bottom hinge cap and then attach the Front leg cover on the bottom of the refrigerator.



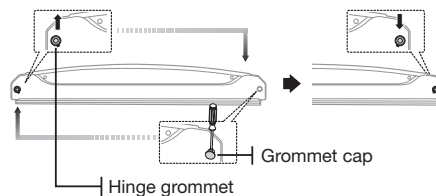
11. Switch the side of the Middle hinge cap. Screw cap and a Screw from left to the right side.



12. Remove the screw on the bottom right side of the Freezer door. Switch the Door stopper and the Hinge grommet from the right to the left.

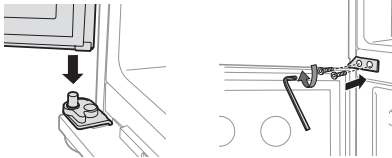


13. Switch the Hinge grommet and the Grommet cap on the top of the Freezer door.



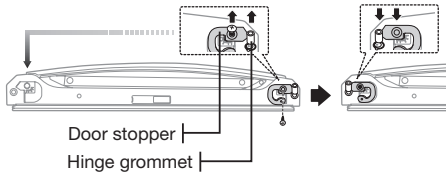
## REVERSING THE REFRIGERATOR DOOR (CONT'D)

14. Carefully put the Freezer door back on. Assemble the Middle hinge with 2 bolts on the left side.

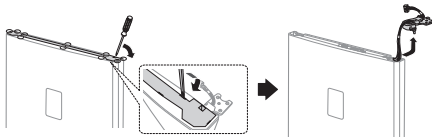


A screw will be remained after reversing freezer door. And it does not affect performance of the refrigerator.

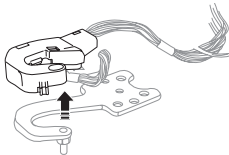
15. Remove the screw on the bottom right side of the Fridge door. Switch the Door stopper and the Hinge grommet from the right to the left.



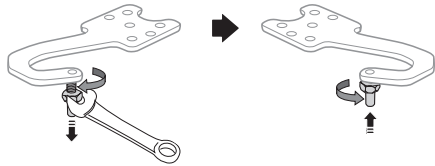
16. Remove the Wire cover on the top of the Fridge door with flat head driver and then take out the Top hinge and wires from right side of Fridge door.



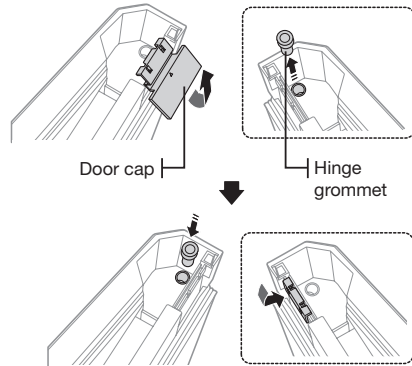
17. Detach the Top right hinge cover from the Top hinge and pull the wires out from the Top right hinge cover.



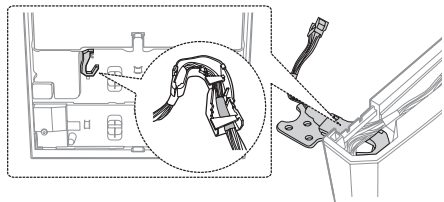
18. Use 11mm wrench to separate the Top hinge shaft. Flip the Top hinge and reattach the Top hinge shaft.



19. Switch the side of the Door cap and the Hinge grommet on the top of the Fridge door.



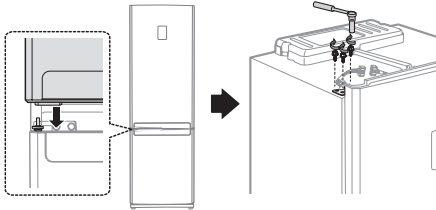
20. Reassemble the Top hinge by reversing the step 19. (Make sure to use the Top left hinge cover which can be found underneath the Top table.) Put the assembled hinge on the left side of the fridge door.



Make sure that red tape on the wire is positioned on the end of the Top left hinge cover.

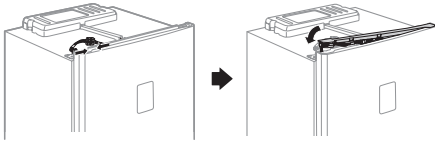
## REVERSING THE REFRIGERATOR DOOR (CONT'D)

21. Carefully put the Fridge door back on. Then tighten 3 bolts to assemble the Top hinge.

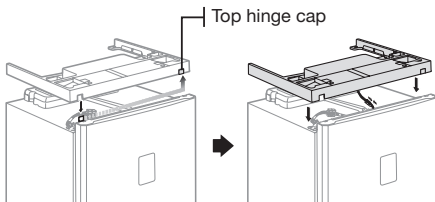


- You must reverse the Type B door handle before putting the Fridge door back. Please refer to page 12.
- For Door handle Type A, make sure to switch the door handle after reversing the door.

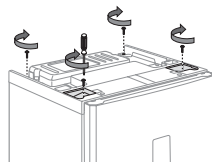
22. Connect wires and then assemble the Wire cover on the top of the Fridge door.



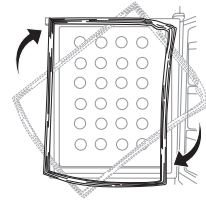
23. Change the position of the Top hinge cap. Connect the wire under the Top cover and put the Top cover back to its original position.



24. Tighten 4 screws back to its place.



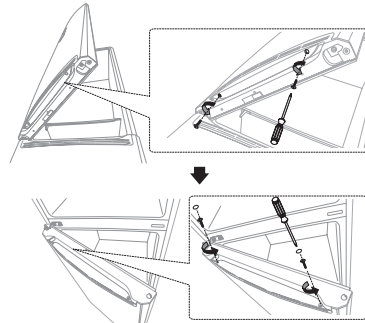
25. Detach the Fridge and the Freezer door gaskets and then attach them after rotating them 180°.



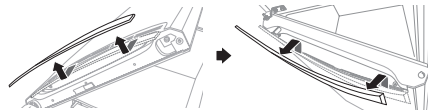
After reversing the doors, make sure the Fridge and Freezer door gaskets are properly arranged. If not, there might be a noise or dew formed which affects performance of the refrigerator.

## REVERSING THE DOOR HANDLE (TYPE A)

1. Remove 2 screws underneath the Fridge door and then take off 2 Cap sheets and remove 2 screws on the Freezer door.

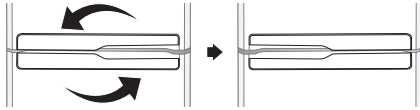


2. Slightly push down the Fridge handle and then remove it by pulling it toward to you. Slightly push up the Freezer handle and then remove it by pulling it toward to you.

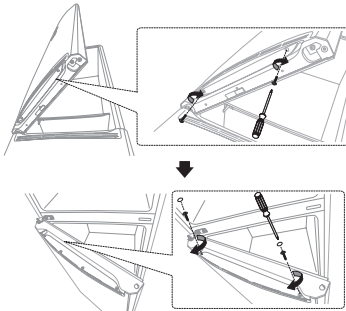


Disassemble the door handle carefully. Hooks inside of the door handles can break easily.

3. Assemble the handles after switching the side of the Fridge handle and the Freezer handle.

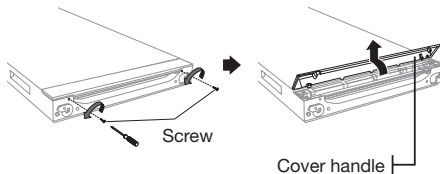


4. Tighten 2 screws underneath the Fridge door and then assemble 2 screws and 2 Cap sheets on the Freezer door.



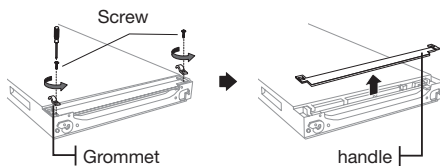
## REVERSING THE DOOR HANDLE (TYPE B)

1. Remove 2 screws underneath the Fridge door and then pull the Handle cover.



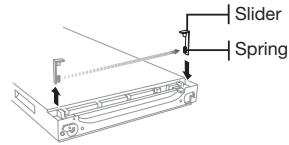
Disassemble the Handle cover carefully. Hooks inside of the Handle cover can break easily.

2. Remove 2 screws on the Handle grommets. Remove the Handle grommets and disassemble the Easy handle.

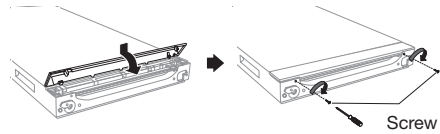


12\_setting up

3. Change the positions of the Handle slider and spring from the left side to the right side. Make sure to change position of the Handle slider cap from the right side to the left side.



4. Assemble the door handle by following step 2 and 1 in reverse order.



This procedure must be done before 'Reversing the Refrigerator Door' step 23.

## LEVELLING THE REFRIGERATOR

If the front of the appliance is slightly higher than the rear, the door can be opened and closed more easily.

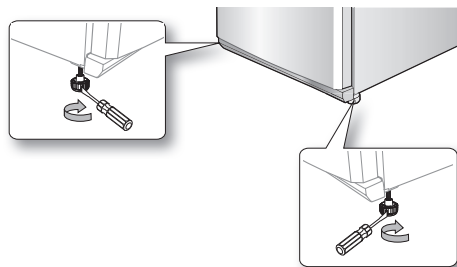
Turn the adjusting legs clockwise to raise and counter-clockwise to lower the height.

Case 1) The appliance tilts down to the left.

- Turn the left adjusting leg in the direction of the arrow until the appliance is level.

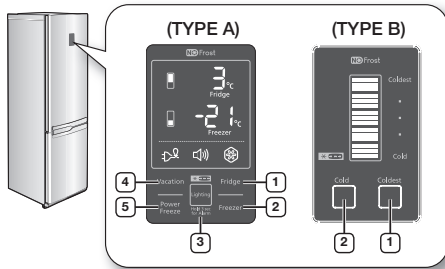
Case 2) The appliance tilts down to the right.

- Turn the right adjusting leg in the direction of the arrow until the appliance is level.



# operating your refrigerator

## CHECKING THE CONTROL PANEL

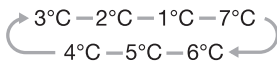


Each time you press the button, a short beep will sound.

## USING THE CONTROL PANEL (TYPE A)

### 1 Fridge

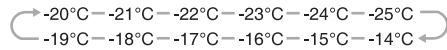
Touch the Fridge button to set the fridge to desired temperature from the range between 1°C and 7°C. Default set temperature is set on 3°C and each time you press the Fridge button, temperature will change in following order and temperature indicator will display the desired temperature.



When the temperature setting is done, the set temperature is displayed initially for 5 seconds and then indicator will display the actual temperature of the fridge.

### 2 Freezer

Touch the Freezer button to set the freezer to desired temperature from the range between -14°C and -25°C. Default set temperature is set on -20°C and each time you touch the Freezer button, temperature will change in following order and temperature indicator will display the desired temperature.



When the temperature setting is done, the set temperature is displayed initially for 5 seconds and then indicator will display the actual temperature of the freezer.

Fridge or Freezer temp indicator will blink when temperature in the fridge or freezer compartment goes up dramatically by storing warm food or frequent door opening. (Fridge or Freezer temperature indicator will stop blinking when temperature in the fridge or freezer is become normal. If temperature indicator does not stop blinking after several hours, please contact your service center.

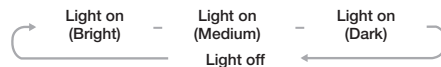
### 3 Lighting (Hold 3sec for Alarm)

Touch the Lighting button to activate the Lighting Function and the light underneath fridge door will be on. The light keeps on while Lighting function is activated.



If you want to adjust the brightness of the light, touch the Lighting button again. (Adjusting brightness may not be available depending on the models.)

To deactivate the Lighting function, touch the Lighting button again until the light is off.



Touch the Lighting button for longer than 3 seconds to activate the Alarm function.

Alarm indicator will light up and the refrigerator will alert you with alarm sound if the refrigerator door is kept open for longer than 2 minutes.

To deactivate the Alarm function, touch the Lighting button for longer than 3 seconds.

- Lighting activated : Light stay on.
- Lighting deactivated : If you open the freezer door with the fridge door closed the Light will be turned on.

#### 4 Vacation

Touch the Vacation button to activate the Vacation function.



Vacation indicator will light up and the refrigerator will set the temperature to 15°C to minimize the power consumption when you are going on a long vacation or business trip or you do not need to use the refrigerator.

While Vacation function is activated, freezer compartment remains on.



- Vacation function will be automatically deactivated if you adjust fridge temperature while Vacation function is on.
- Make sure to remove foods in the fridge compartment before using Vacation function.

#### 5 Power Freeze

Touch the Power Freeze button to activate the Power Freeze function.



Power Freeze indicator will light up and the refrigerator will speed up the time to needed to freeze products in the freezer.

Power freeze function will be activated for 72 hours and freezer indicator will display -25°C.

The Power Freeze function switches off automatically.

When the Power Freeze process is completed, the Power freeze indicator switches off and the freezer switches back to the previous temperature setting. When you use this function, the energy consumption will increase.

To deactivate the Power Freeze function, touch the Power Freeze button again.



- If you need to freeze large amount of food stuff, activate Power Freeze function at least 24 hours before.

## USING THE CONTROL PANEL (TYPE B)

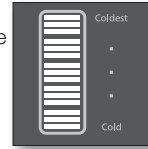
#### 1 Coldest

Press the Coldest button one or more times to lower the temperature of the refrigerator.

Temperature indicator will change from cold to coldest.

Default set temperature is the Mid-point temperature.

When all lights are on, the temperature is at its coldest.



#### 2 Cold

Press the Cold button one or more times to raise the temperature of the refrigerator.

Temperature indicator will change from coldest to cold.

Default set temperature is the Mid-point temperature.

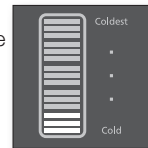
When one light is on, the temperature is at its cold.



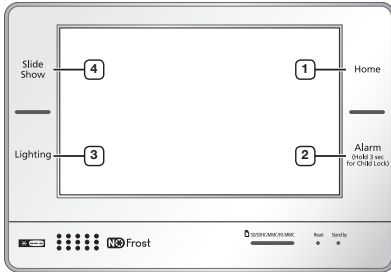
- There are five temperature settings, represented by five indicator lights.
- The freezer temperature will be adjusted automatically according to the refrigerator temperature (as stated in below).

| Cold  | Coldest |
|---|---------|
| -14°C (7°C) – -17°C (5°C) – -20°C (3°C) – -22°C (2°C) – -25°C (1°C) |         |
| Temperature of Freezer(Fridge)                                      |         |

- If you need to freeze large amount of food stuff, set the temperature of refrigerator as the coldest temperature at least 24 hours before.
- Temp indicator will blink when temperature in the fridge or freezer compartment goes up dramatically by storing warm food or frequent door opening.  
Temperature indicator will stop blinking when temperature in the fridge or freezer becomes normal.  
If temperature indicator does not stop blinking after several hours, please contact your service center.



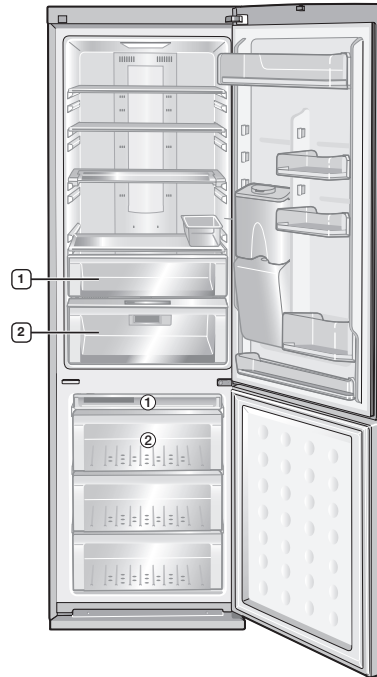
## CHECKING THE CONTROL PANEL (TYPE C)



|                               |  |
|-------------------------------|--|
| <b>1</b><br><b>HOME</b>       | You can go to the home screen with the main functions of the refrigerator.   |
| <b>2</b><br><b>ALARM</b>      | The alarm will alert you if the refrigerator door is kept open for longer than 2 minutes.<br>To cancel the alarm, touch the Alarm button again. You can activate/deactivate the Child Lock function by touching this button for 3 seconds. |
| <b>3</b><br><b>LIGHTING</b>   | You can turn the lighting underneath the fridge door on or off.  |
| <b>4</b><br><b>SLIDE SHOW</b> | You can use this function to see images saved in the Photo Album.  |



- For more information about using Control panel (Type C), refer to LCD Control Manual enclosed with this manual.
- If you need to freeze large amount of food stuff, activate Power Freeze function at least 24 hours before.



- Some of the feature such as Water Tank, Cool Select Zone, Cooler Zone and Photosynthetic Fresh can be different and may not be available depending on the model.
- To get more space in the refrigerator, you can remove Fresh Safe Drawer **1** and Cooler Zone Drawer **2** (except Cool Select Zone Box).  
To get more space in the freezer, you can remove **1** and **2** drawers.  
It does not affect thermal and mechanical characteristics.  
A declared storage volume of the freezer compartment is calculated with these parts removed.

## USING COOL SELECT ZONE™

You can store various foods such as cheese, meat, poultry fish and other foods at ideal temperature to preserve the taste of food.



### Quick Cool

- If you want to cool down food quickly, store food in Cool Select Zone and press Quick Cool button.
- Cool Select Zone will cool food for 60 minutes.
- When Quick Cool mode is completed, the Cool Select Zone drawer will automatically set the mode to Cool.

### Soft Freeze

- When you select Soft Freeze mode, temperature of the Cool Select Zone will be set on -5°C.

### Zero Zone

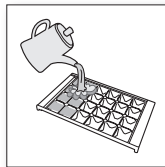
- When you select Zero Zone mode, temperature of the Cool Select Zone will be set on 0°C.

### Cool

- When you select Cool mode, temperature of the Cool Select Zone will be set on 3°C.

## MAKING ICE

1. Fill the tray up to 80% with water level.
2. Place the ice tray in the top freezer drawer.
3. Wait until the ice cubes are formed.
4. Twist the ice tray slightly to take out the ice cubes.



### Freezing time

It is recommended that you wait for about 1~2 hour with the temperature set to Power Freeze for the ice cubes to form.

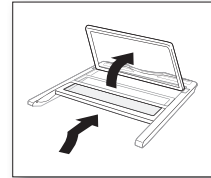


### Danger of explosion

- The coldest parts of the refrigerator is the rear panel.  
This is the best place to store delicate foodstuffs.
- Glass bottles containing liquids should never be stored in the freezer as the glass can shatter when the contents freeze.

## USING THE FOLDABLE SHELF

You can fold the foldable shelf if you need to accommodate taller containers or products on the shelf underneath.



1. Slightly lift up the shelf and slide it inward.
2. Lift up the tucked shelf towards the rear wall.
3. You can simply pull the folded shelf in reverse procedure to use the fully extended shelf.



Shelf can fall out, handle with care when using or cleaning the shelf.

## USING THE WATER DISPENSER

### Filling the water

You can fill the water with the water tank sitting inside of the refrigerator or you can remove the water tank to fill the water.



1. Open the round cap and fill the water tank up with drinking water.
- Do not fill up the water tank too much (just over 4.2 liters).  
As it could overflow when the door opens and closes.
2. Close the round cap by pushing down on it until it clicks into place.

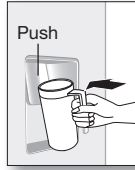


Do not put anything other than water in the water tank.



## Getting water from the dispenser

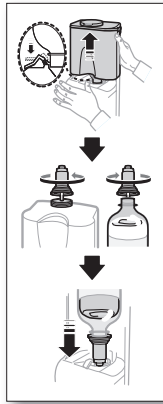
1. Place a glass underneath the water outlet.
2. Push it gently against the water dispenser lever with your glass.



- Make sure the glass is in line with the dispenser to prevent the water from splashing out.
- Water dispenser may not be available depending on the model.

## Installing a regular bottle

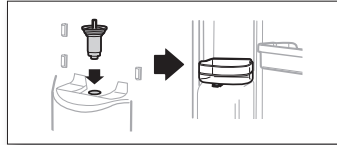
1. Press the fixing lever, lift the Water tank upwards and remove it.
2. Remove the Dispenser cock from the Water tank.
3. Put the Dispenser cock on the regular mineral water bottle and rotate them clockwise to lock the Dispenser cock.
4. Put the water bottle with the Dispenser cock in the dispenser hole.



- Gurgling sounds may be heard when air enters the water bottle from regular mineral water or beverage bottles.
- Some regular mineral water or beverage bottles may not fit the Dispenser cock depending on their size.
- If water does not come out satisfactorily when you press the lever, press the lever again.
- Do not use carbonated drinks. When you press the lever, beverage may spurt out due to the pressure of carbonic gas accumulated in the upper part of beverage bottle.
- For better hygiene, beverages with a high sugar content (juice, soft drinks) are not recommended.
- You can use bottled mineral water or boiled tap water as long as it does not contains any particles.

## When the water dispenser is not used

1. Fix the Dispenser cock tightly into the dispenser hole.
  - When the Dispenser cock is pulled out for a long time, Refrigerator may not operate properly because cold air will leak.
2. Place a Variety guard in the location of the Water tank and store beverage bottle.
  - Two 1.5 liter bottles can be placed.



## USING THE PHOTOSYNTHETIC FRESH (OPTIONAL)

### Feature of photosynthetic fresh LED

Plants breathe only without light.

However, if there is light, plants can breathe and photosynthesize at the same time.


Therefore, if you keep the vegetables in dark refrigerator, they continue breathing and it makes organic matter in vegetables decrease and wither more quickly.

If you keep vegetables and fruits in fresh safe drawer, you can keep them fresher because they can breathe and photosynthesize in there at the same time.



- Do not look directly at the Photosynthetic Fresh LED for a long time. It may cause an eye trouble.

### Operating photosynthetic fresh

- Photosynthetic Fresh LED is installed on the back of the fresh safe drawer. It keeps vegetable and fruits stored in fresh safe drawer fresher by providing light.
 
- To maximize the effect, keep the vegetables and fruits in the transparent vinyl bag or itself. Effect may decrease if vegetables and fruits are in the opaque boxes, containers or black vinyl bag.

- Photosynthetic Fresh LED is always on when the fridge door is opened.  
LED will turn on and off repeatedly when the door is closed.

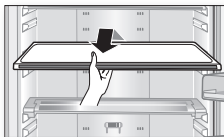


In winter time, if you set the desired temperature of fridge as 1°C and store vegetables for a long time, vegetables can be frozen.

## REMOVING THE INTERIOR PARTS

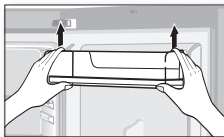
### Shelves

Gently lift up the shelves with both hands and pull it toward you. (Glass shelf/ Foldable shelf)



### Door guards

Firmly grab the door guards with both hands and lift it up gently to remove the door guards.



### Water tank

Firmly grab the water tank with both hands and lift it up towards you gently to remove the water tanks.

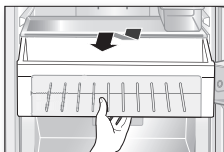


Water tank may not be available depending on the model.



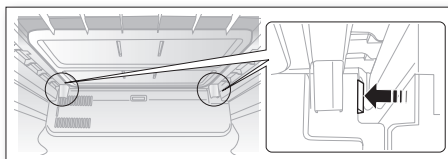
### Drawers

Pull the drawers out fully then slightly lift it up to remove the drawers. (Fresh safe drawer / Cool select zone drawer / Cooler zone drawer / Freezer Drawers)



### Cooler zone

Press the locking device on the rear left and right side of the cooler zone cover and pull the cooler zone cover to remove it.



To get the best energy efficiency of this product, please leave all selves, drawers and baskets on their original position like as illustration in page (15).

## CLEANING THE REFRIGERATOR



**WARNING** Do not use Benzene, Thinner or Clorox™ for cleaning.

They may damage the surface of the appliance and can create a risk of fire.



**CAUTION** Do not spray the refrigerator with water while it is plugged in, as it may cause an electric shock.

Do not clean the refrigerator with benzene, thinner or car detergent for risk of fire.

## REPLACING THE LED LAMP

When the interior or exterior LED lamp has gone out, do not disassemble the lamp cover and LED lamp by yourself.



Please contact your service agents.

# troubleshooting

| PROBLEM  | SOLUTION  |
|--|---|
| The appliance is not operating at all or the temperature is too high.                  | <ul style="list-style-type: none"> <li>• Check if the power plug is correctly connected.</li> <li>• Is the temperature control on the front panel correctly set?</li> <li>• Does sun shine on the appliance or are there any heat sources nearby?</li> <li>• Is the back of the appliance too close to the wall?</li> </ul>   |
| The food in the refrigerator is frozen.  | <ul style="list-style-type: none"> <li>• Is the temperature control on the front panel set to the coldest temperature?</li> <li>• Is the surrounding temperature too low?</li> </ul>  |
| There are unusual noises.  | <ul style="list-style-type: none"> <li>• Check if the appliance is installed on a stable and even floor.</li> <li>• Is the back of the appliance too close to the wall?</li> <li>• Have any foreign objects fallen behind or under the appliance?</li> <li>• Is the noise coming from the compressor in the appliance?</li> <li>• A ticking sound occurs when the various accessories contract or expand.</li> </ul>  |
| The front corners and sides of the appliance are warm and condensation starts to form. | <ul style="list-style-type: none"> <li>• Heat-proof pipes are installed in the front corners of the appliance to prevent condensation from forming. When the surrounding temperature rises, this may not always be effective. However, this is not abnormal.</li> <li>• In very humid weather, condensation may form on the outer surface of the appliance when the moisture in the air comes into contact with the cool surface of the appliance.</li> </ul> |
| You can hear a liquid bubbling in the appliance.                                       | <ul style="list-style-type: none"> <li>• This is the refrigerant, which cools the inside of the appliance.</li> </ul>   |
| There is a bad smell inside the appliance.   | <ul style="list-style-type: none"> <li>• Is there any spoiled food inside of the refrigerator?</li> <li>• Make sure that strong smelling food (for example, fish) is wrapped so that it is airtight.</li> <li>• Clean out your refrigerator periodically and throw away any spoiled or suspect food.</li> </ul>   |
| There is a layer of frost on the appliances walls.                                     | <ul style="list-style-type: none"> <li>• Are the air outlet vents blocked by food stored inside the refrigerator?</li> <li>• Space the food out as much as possible to improve ventilation.</li> <li>• Is the door fully closed?</li> </ul>   |
| Condensation forms on the inside wall of the appliance and around vegetables.          | <ul style="list-style-type: none"> <li>• Food with a high water content is stored uncovered with a high humidity level or the door has been left open for a long time.</li> <li>• Store the food with a cover or in sealed containers.</li> </ul>   |

## Ambient Room Temperature Limits

This fridge/freezer is designed to operate in ambient temperatures specified by its temperature class marked on the rating plate.

| Class              | Symbol | Ambient Temperature range(°C) |
|--------------------|--------|-------------------------------|
| Extended Temperate | SN     | +10 to +32                    |
| Temperate          | N      | +16 to +32                    |
| Subtropical        | ST     | +16 to +38                    |
| Tropical           | T      | +16 to +43                    |



Internal temperatures may be affected by such factors as the location of the fridge/freezer, ambient temperature and the frequency with which you open the door.  
Adjust the temperature as required to compensate for these factors.

**English**

**Correct Disposal of This Product**  
**(Waste Electrical & Electronic Equipment)**

*(Applicable in the European Union and other European countries with separate collection systems)*



This marking on the product, accessories or literature indicates that the product and its electronic accessories (e.g. charger, headset, USB cable) should not be disposed of with other household waste at the end of their working life. To prevent possible harm to the environment or human health from uncontrolled waste disposal, please separate these items from other types of waste and recycle them responsibly to promote the sustainable reuse of material resources.

Household users should contact either the retailer where they purchased this product, or their local government office, for details of where and how they can take these items for environmentally safe recycling.

Business users should contact their supplier and check the terms and conditions of the purchase contract.

This product and its electronic accessories should not be mixed with other commercial wastes for disposal.

Contact SAMSUNG WORLD WIDE

If you have any questions or comments relating to Samsung products, please contact the SAMSUNG customer care center.

| COUNTRY      | CALL                       | Web site   |
|--------------|----------------------------|--|
| AUSTRALIA    | 1300 362 603               | <a href="http://www.samsung.com/au">www.samsung.com/au</a>   |
| COLOMBIA     | 01-8000112112              | <a href="http://www.samsung.com/co">www.samsung.com/co</a>   |
| EIRE         | 0818 717 100               | <a href="http://www.samsung.com/ie">www.samsung.com/ie</a>   |
| HONG KONG    | (852) 3698-4698            | <a href="http://www.samsung.com/hk">www.samsung.com/hk</a><br><a href="http://www.samsung.com/hk_en/">www.samsung.com/hk_en/</a> |
| INDIA        | 3030 8282, 1-800-3000-8282 | <a href="http://www.samsung.com/in">www.samsung.com/in</a>   |
| MALAYSIA     | 1800-88-9999               | <a href="http://www.samsung.com/my">www.samsung.com/my</a>   |
| NEW ZEALAND  | 0800 SAMSUNG (726-7864)    | <a href="http://www.samsung.com/nz">www.samsung.com/nz</a>   |
| PANAMA       | 800-7267                   | <a href="http://www.samsung.com/latin">www.samsung.com/latin</a>   |
| PHILIPPINES  | 1800-10-SAMSUNG (726-7864) | <a href="http://www.samsung.com/ph">www.samsung.com/ph</a>   |
| SINGAPORE    | 1800-SAMSUNG (726-7864)    | <a href="http://www.samsung.com">www.samsung.com</a>   |
| SOUTH AFRICA | 0860-SAMSUNG (726-7864 )   | <a href="http://www.samsung.com">www.samsung.com</a>   |
| U.K          | 0330 SAMSUNG (726-7864)    | <a href="http://www.samsung.com">www.samsung.com</a>   |
| VIETNAM      | 1 800 588 889              | <a href="http://www.samsung.com">www.samsung.com</a>   |

Code No. DA99-02116A REV(0.4)