

B.I.C.A.
Built-In Coffee Appliance
With Programmable Clock/Timer and Lighted Display



Models: 1033519



20333 S. Normandie Ave. Torrance, CA 90502
Tel. (310) 787-5444 • (800) 421-6860 • Fax (310) 787-5412
U.S.A. E-Mail: brew@brewmaticusa.com
Int'l E-Mail: brew equip@brewmaticusa.com
Website: brewmatic.com

Parts & Service

CONTENTS:

Important Information	Page 2
Appliance Information	Page 3
Control Location & Description	Page 3
Wiring Diagram	Page 4
Trouble Shooting Guide	Page 5 - 6
Parts Diagram & Parts List	Page 7 - 8
Programming (For Machines made starting from Serial No. 3432583 and Higher)	Page 9 - 10
Programming (For Machines made before Serial No. 3432583)	Page 11
<i>Programming your Built In Coffee Appliance (Setting the Clock, Setting the volume, Setting the brewing time)</i>	
Adjustments	Page 12
<i>Adjusting The Temperature Resetting The Hi-Limit Thermostat Removing The Thermistor Sensor Installing the Thermistor Sensor</i>	
Maintenance & Cleaning	Page 13
Limited Warranty	Page 13

IMPORTANT INFORMATION

Read all instructions and safeguards included in the packaging carefully and completely before installing or operating this equipment. Save all instructions for future reference.

To reduce the risk of fire or electric shock, do not remove covers. There are no user serviceable parts inside. Repairs should be done by authorized service personnel only. If this appliance should fail to operate properly, contact Brewmatic direct at 800-421-6860.

Only Authorized Replacement Parts Should Be Used. Part substitutions could create a fire hazard and the risk of personal injury. The use of replacement parts or accessory attachments not recommended by Brewmatic may be hazardous.

Do Not By-Pass Any Safety Mechanisms Or Operate This Appliance Without Covers In Place. Brewmatic requires that all safety devices and covers be in place and functioning at all times to guard against a fire hazard and the risk of personal injury.

Brewmatic Does Not Recommend, And Will Not Furnish Anyone With Information For Changing The Electrical Rating Of Any Appliance Distributed By Brewmatic. Brewmatic will not approve of any unauthorized changes to the basic design of this appliance. Any modification or alteration to the appliance may create a fire hazard, may create a risk of personal injury, may void the safety listings and may void the warranty.

All procedures, diagrams and specifications contained in this manual are based on the latest information available at the time of publication. Information, parts and specifications are subject to change without notice.

Due to periodic reviews and changes in listing standards, listings and approvals may change at any time. For current listing and approval information contact Brewmatic.

Plumbing connections - All plumbing connections to water supply lines and drains should be performed by a licensed plumber complying with all applicable plumbing codes having jurisdiction.

Electrical connections - With the exception of cords with plugs already attached, all electrical connections or alterations to the power supply should be performed by a licensed electrician complying with all applicable electrical codes having jurisdiction. When calling for information, parts or service, have the following information available:

Model Number: _____ Serial Number: _____

Voltage: _____ Wattage: _____ Amps: _____ Phase: _____

Date Of Purchase: _____

Electrical information may be obtained from the electrical information nameplate located on the appliance.

Appliance Specifications:

Model Numbers:	1033519
Descriptions:	BICA With Programmable Clock/Timer and LIGHTED Display
Dimensions:	13" W x 3-9/16" H x 9-3/16" D
Volts:	120
Watts:	1600
Amps:	13.6
Hertz:	60
Phase:	1
Power Supply Cord:	4 Ft. 3 Wire + Ground
Plug:	NEMA 5-15P. Furnished and attached
Power Supply Required:	120Volts, 15 Amp, dedicated circuit.
Wall Receptacle Required:	15Amp. NEMA 5-15R. Not furnished
Listing:	ETL Electrical & Sanitation

Settings And Adjustments:

Brewing Capacity:	58 to 64 oz. on 12 cup setting
Brewing Temperature:	Brewcone: 192°F (89°C) to 196°F (91°C)
Thermostat Adjustment:	See Service Manual For Adjustments.
Flow Control:	.065 GPM Flow Rate
Hi-Limit Thermostat:	Manual reset. Not adjustable.
Brewing Temperature:	Brewcone: 192°F (89°C) to 196°F (91°C)
Thermostat Adjustment:	See Service Manual For Adjustments.
Water Supply Required:	30 PSI min., 80 PSI max.
Water Connection:	1/4" Plastic Fitting., Palastic Nut Supplied
Flow Control:	.065 GPM Flow Rate

CONTROL LOCATIONS AND DESCRIPTIONS

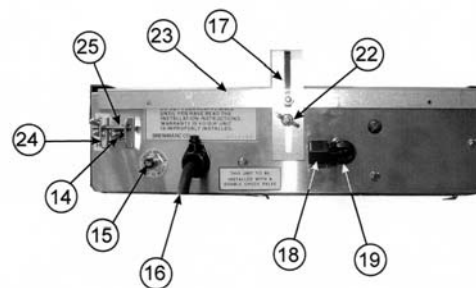
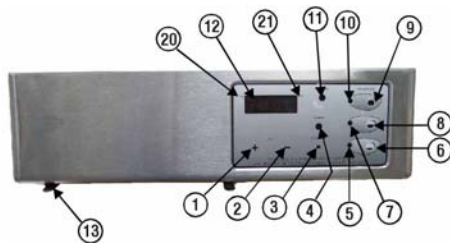
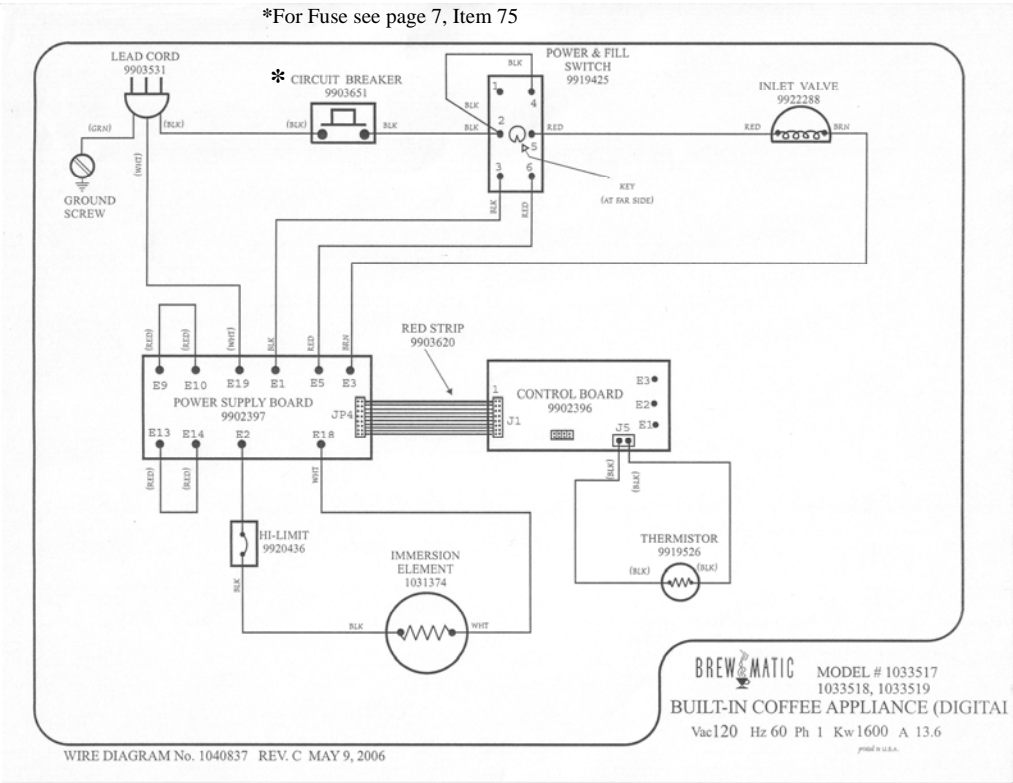


Fig. 1

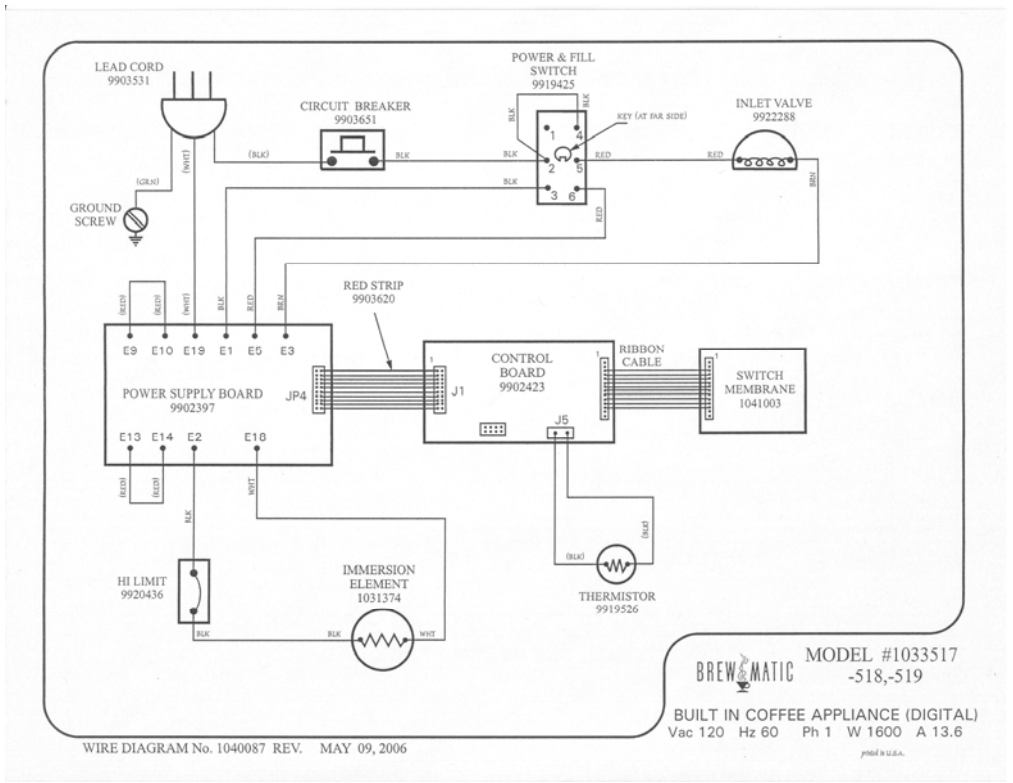
1. **“+” Button**
Press to adjust the clock (hr) and or adjust the time (hr) for “Brew Start Time”.
2. **“-” Button**
Press to adjust the time (min.) and or adjust the time (min.) for “Brew Start Time”.
3. **Program Button.**
Press this button to change the time and selection settings.
4. **Power Light.**
When lit, indicates unit is in ON.
5. **Quarter Brew Selection Light**
Will light when Quarter Brew selection is pressed or flash when selection is in program mode.
6. **Quarter Brew Selection Button**
Press this button to select Quarter Brew selection to brew coffee.
7. **Half Brew Selection Light.**
Will light when Half Brew selection is pressed, or flash when Half Brew selection is in Program Mode.
8. **Half Brew Selection Button**
Press this button to select Half Brew selection to brew coffee.
9. **Full Brew Selection Button**
Press this button to brew a full decanter
10. **Full Brew Selection Light**
Will light when Full Brew selection is pressed, or flash. When Full Brew selection is in Program Mode.
11. **“Service” Light**
Indicates problem with the machine and service is required.
12. **Display Window**
Displays the time in hours, minutes and program information
13. **Brew Cone Guide Rails**
Slide the brew cone in here.
14. **Toggle Switch (On-Off-Fill)**
Turns ON the power to the coffee appliance and fills the tank prior to use.
15. **Circuit Breaker**
Breaks the power to the coffee appliance
16. **Power Supply Cord**
Connect this cord to appropriate wall receptacle.
17. **Rear Mounting Bracket**
Holds the rear of the machine
18. **Plastic Nut Fitting**
Insert the plastic water supply tubing thru here. (See item #26)
19. **Plastic Water Inlet Elbow Fitting**
The incoming tube polyethylene (water supply) connects here.
20. **LIGHT Dot Display (“PM” Indicator)**
When lit, indicates time is past 12 O'clock in afternoon.
21. **LIGHT Dot Display “Brew time SET” Indicator**
Will light when a “Brew time” is Set.
22. **Wing Nut**
Holds the Appliance to the rear mounting bracket
23. **Panel Bracket**
Mount this under the cabinet.
24. **Safety Bracket**
Prevents accidental dry fire. Remove the screw after the initial tank fill up.
25. **Screw**
Prevents switch from being pushed up. Remove the screw after the initial tank fill up.
26. **Plastic Tubing (Polyethylene) NOT SHOWN - Tubing supplied is 7’, cut tubing to appropriate length before connecting to water inlet.**

WIRING DIAGRAM

*For Fuse see page 7, Item 75



Wire Diagram (Use for machines before serial no. 3432583)



Wire Diagram ((Use for machines with serial no. 3432583 and higher)

TROUBLESHOOTING

SERVICE SHOULD BE PERFORMED BY QUALIFIED SERVICE PERSONNEL ONLY.

WARNING: Turn off the "Power-Fill" toggle switch. Unplug the power supply cord and allow the coffee appliance to cool before servicing unless electrical testing is required.

WARNING: Make sure installation instructions have been followed before attempting to test this coffee appliance.

Note: Allow the coffee appliance to heat up to brewing temperature BEFORE testing the temperature, water volume or the hi-limit thermostat.

Symptom	Possible Causes	Remedies
1. The coffee appliance will not turn ON when the power switch is turned ON .	The power supply cord is not plugged in. No power at the wall outlet. The hi-limit thermostat has set. The machine circuit breaker has tripped.	Plug the power supply cord into an appropriate wall receptacle. Test the wall receptacle and the circuit breaker in the building. Call for service assistance. Reset Circuit Breaker on rear of machine.
2. The coffee appliance trips the building's circuit breaker.	Too many appliances are connected on one electrical circuit. The electrical circuits amperage rating is too low.	Remove any other coffee appliances from the current circuit or call an electrician to correct this problem. Locate a correctly rated circuit, or call an electrician to correct this problem.
3. The water for brewing is not hot enough.	The brewing temperature has not been adjusted correctly.	Call for service assistance.
4. The water for brewing is too hot.	The brewing temperature has not been adjusted correctly.	Call for service assistance.
5. Incorrect or inconsistent beverage level.	The water supply pressure may not meet requirements.	Test the incoming water supply pressure. Water pressure should be between 30 and 80 psi. If the water pressure exceeds 80 psi, install a water pressure regulator and reduce the water pressure to 50 psi.
6. The hi-limit thermostat keeps activating.	Defective Hi-Limit. The brewing temperature exceeds temp setting #1, or temp setting #1 not regulated Defective Temp. Sensor Not enough water entering the machine.	Call for service assistance. Check for clogged filter. Make sure the shut-off valve is completely open.
7. The coffee appliance is making unusual noises.	The water supply tube may be touching the coffee appliance, counter top or walls. The water pressure may be excessive.	Adjust the copper tubing so it does not touch the coffee appliance, counter top or wall. Test the incoming water supply pressure. Water pressure should be between 30 and 80 psi. If the water pressure exceeds 80 psi, install a water pressure regulator and reduce the water pressure to 50 psi.
8. Service Light comes on at power on.	Defective Temp. Sensor. Defective Control Board Temp. Sensor not connected to Control Board Hot water temperature exceeds the "Set Temperature". Water inlet was open for longer than 15 – 20 minutes.	Call for service assistance.
9. Water continuously flowing from the spray head and will not stop	Defective Inlet Valve. Defective Control Board Defective Power Supply Board	Call for service assistance.

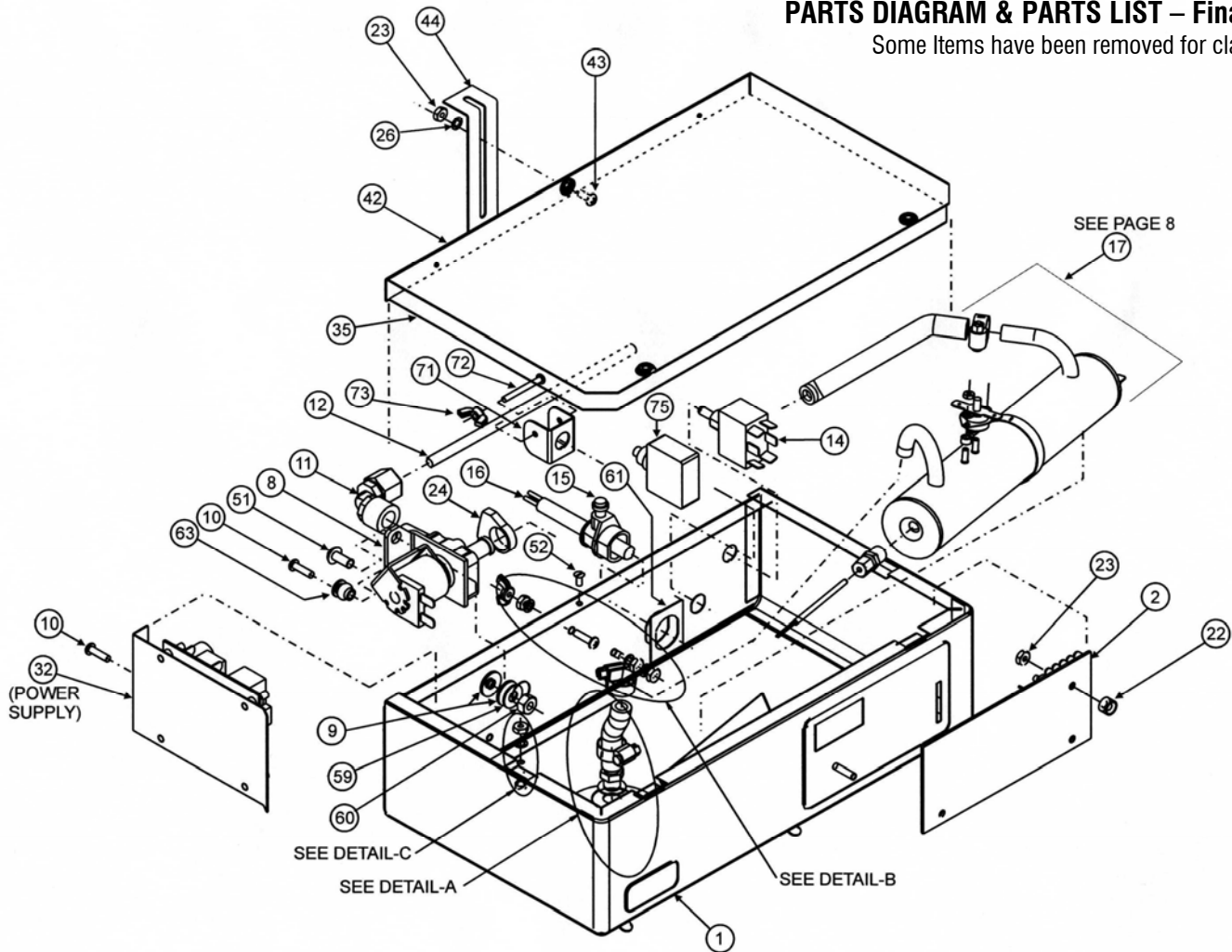
Symptom	Possible Causes	Remedies
<p>10. Poor tasting coffee. Water deposits are plugging the spray head or siphon tubing.</p>	<p>Water deposits are plugging the spray head or siphon tube.</p> <p>The brewing temperature has not been adjusted correctly.</p> <p>The amount of coffee being used may not be correct.</p> <p>More than one paper filter was used when brewing.</p> <p>The coffee appliance should be cleaned regularly.</p>	<p>Clean the spray head and use the clean out spring. <i>See the Maintenance And Cleaning section.</i></p> <p>Call for service assistance.</p> <p>Change the amount of coffee being used.</p> <p>Use only one paper filter for each brew cycle. <i>See the Maintenance And Cleaning section.</i></p>
<p>11. There are coffee grounds in the brewed coffee.</p>	<p>Using too much coffee or coffee that has been ground too fine.</p> <p>Incorrect type of paper filter being used.</p> <p>Two paper filters may have been used accidentally.</p>	<p>Adjust the amount of ground coffee being used or adjust the grind of the coffee. Too much coffee or coffee that is ground too fine may slow the flow of the water through the coffee.</p> <p>Make sure that the paper filter being used is correct for this type of coffee appliance.</p> <p>Use only one paper filter per brew cycle.</p>

If the steps in this trouble shooting guide should fail to solve your problem, unplug the coffee appliance and contact Brewmatic at 800-421-6860.

**This trouble-shooting guide is for the installers use only.
Operator should refer to the operating instruction only.**

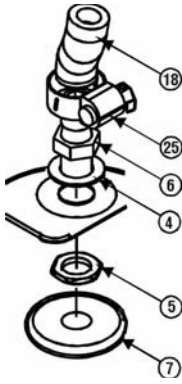
PARTS DIAGRAM & PARTS LIST – Final Assy.

Some Items have been removed for clarification



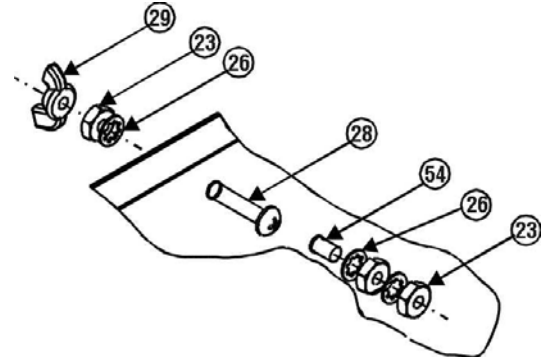
Item No.	Part No.	Description	Item No.	Part No.	Description
1	1031354	Weld Assy., Shell Elect. BICA <i>(Use for machines with serial # 3432508 and higher)</i>	24	9903591	Clamp, Hose Double Tang
	1031355	Weld Assy., Shell Elect. BICA <i>(Use for machines before serial # 3432508)</i>	26	9303104	Washer, Lock W/Int Tooth #8
2	9902423 *1041003	Board, Control Electronic * <i>(Must use with 1041003 - Switch, Membrane)</i>	32	1031357	Plate, Power Supply Assy.
2a	9902396 *1040878	Board, Control Electronic * <i>(Must use with 1040878 - Switch, Membrane)</i>	35	1031367	Cover, Top
3	9903620	Cable, Ribbon BICA (NOT SHOWN)	42	1031368	Mounting Plate
8	9922288	Valve, Inlet	43	9001122	Screw, Mach. Rd. Hd. #8-32 x 3/8" Lg
9	9923227	Washer, Slinger 21/32 OD x 1/4 ID	44	1040137	Bracket, Support
10	9001107	Screw, Mach. Rd. Hd. #8-32 x 1/2" Lg.	51	9001120	Screw, Mach. 14-20 x .5"Lg. Brass
11	9906598	Fitting, Elbow 90, 1/4 Plastic With Plastic Nut	52	9003115	Screw, Flat #6-32 x .25 Undercut
12	1031381	Tube, 1/4" OD Polyethylene (7 Ft. Long)	59	9301153	Washer, .625 OD x .282 ID x .040 Thk.
14	9919425	Switch, Toggle, On/Off/Mom	60	9914381	Nut, Hex 1/4-20
15	9902329	Bushing, Strain Relief Black	61	1034272	Plate, Bushing
16	9903531	Cord, Power Supply	63	9205102	Nut, Well #8-32 Neoprene
17	See Pg 8	Tank Assy, BICA	71	6000861	Bracket, Switch Safety
22	1012134	Spacer, Control Board	72	9001228	Screw, Mach. Rd. Hd. #6-32 x 1-1/4" Lg
23	9201145	Nut, Hex Std. #8-32 S/S	73	9203104	Wing Nut #6-32
			75	9903651	Circuit Breaker 20A <i>(For machines before serial no. 3432508, use Fuse# 9906568 & Fuse Holder #9906566)</i>
			76	1031378	Stainless Steel Brew Cone (NOT SHOWN)
			77	9904533	Decal, Encapsulated (Brewmatic) (NOT SHOWN)

PARTS DIAGRAM AND PARTS LIST



**DETAIL - A
Spray Head**

Item No.	Part No.	Description
4	9907223	Gasket, S/S 13/32 ID x 11/16 OD
5	9202120	Nut, Hex 1/8-27
6	6000792	Fitting, 1/8 Str. Pipe x 5/16H
7	1030617	Spray Head
18	6000736	Tube, Silicone .5 OD x .297 ID x 2" Lg.
25	9903490	Clamp, Hose Miniature, 7/32 to 5/8 (Worm Drive)



**DETAIL - B
Mounting & Ground Screw**

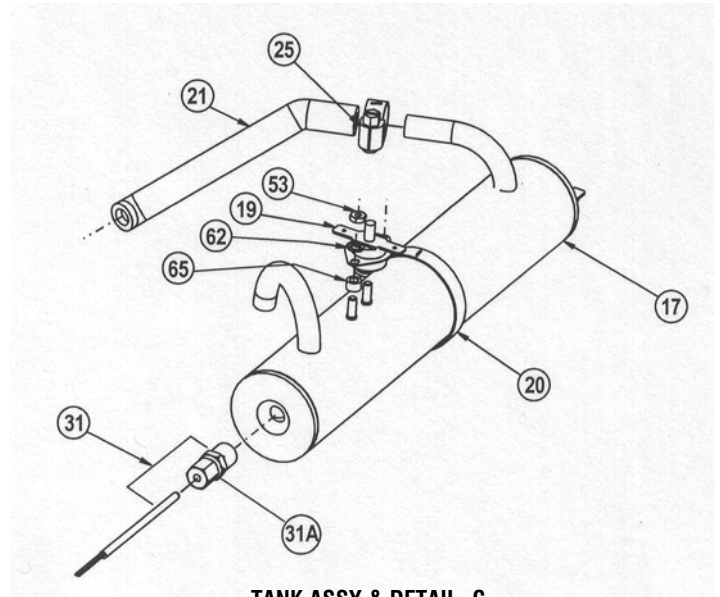
Item No.	Part No.	Description
23	9201145	Nut, Hex Std #8-32 S/S
26	9303104	Washer, Lock W/Int. Tooth #8
28	9001110	Screw, Mach. #8-32 x 1"
29	9203105	Wing, Nut #8-32
54	9001208	Screw, Mach. Rd. Hd. #8-32 x 5/8" Lg.

Item No.	Part No.	Description
17	1031374	Weld Assy, Tank
19	9920436	Thermostat, Hi-Limit Manual Reset
20	9903176	Clamp, Worm Drive 1-1/16 x 2
21	1032180	Tube, Silicone .50 OD x .297 ID x 5.25 Lg
25	9903490	Clamp, Hose Miniature, 7/32 to 5/8 (Worm Drive)
31	6000937	Replacement Sensor Assy. (See Note)

Sensor Assy consist of:
 9919526 - Sensor, Temperature
 9914317 - Nut, Compression 1/8"
 9919353 - Sleeve, 1/8"

Note: If P/N 6000937 is not available, use P/N 9919526, Sensor Assy. & item #3a 9906166, Fit'g 1/8 MPT 1/8 Ferrule

31a	9906166	Fit'g 1/8 MPT 1/8 Ferrule
53	9201152	Nut, Hex #6-32 x .25 OD
62	9303103	Washer, Lock W/Int. Tooth #6 NPS
65	9919536	Spacer, Dia. .25 x .15 Lg. Brass
68	6000887	Fitting, 1/8 NPT x 1/2-20 UNF
69	9907212	Washer, Copper .520 ID x .70 OD



TANK ASSY & DETAIL - C

PROGRAMMING YOUR BREWMATIC: (See Fig. 7) (ALL MACHINES STARTING FROM SERIAL NO. 3432583 AND HIGHER)

SETTING THE CLOCK:

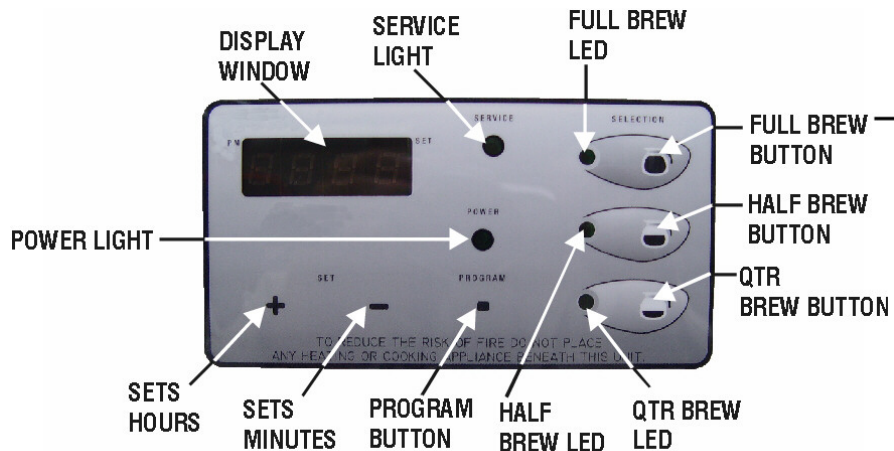


Fig. 7

1. Press and Hold the “PROGRAM” button for approximately 3 seconds to enter Program Mode. The colon (:) on the display will begin to flash and a beep is emitted by the brewer to confirm that it has entered Program Mode.
2. To set hours, press and hold the plus (+) button; hours on display will advance from 00 to 12pm. PM time is set when the green dot is lit next to the “PM” in the upper left corner of the display box.
3. To set minutes press and hold the minus (-) button; minutes will advance from 00 to 59.
4. After setting the clock, press the “PROGRAM” button four (4) times to exit the Program Mode.

RESETTING THE VOLUME: (Amount of Coffee to be brewed)

NOTE: This machine is preset at the factory for the following settings:

FACTORY PRESET SETTINGS:

Volume Settings: Full Brew: (64 oz) 7:00 Minutes Half Brew (32 oz): 3:30 Minutes Qtr. Brew (16 oz): 1:45 Minutes

NOTE: When making volume adjustments, always be sure an empty container with 64 ounces capacity is under the brew cone and the power is ON. The volume of water dispensed, may vary slightly depending on water pressure or other factors.

1. Press and Hold the “PROGRAM” button for approximately 3 seconds to enter Program Mode. The colon (:) on the display will begin to flash and a beep is emitted by the brewer to confirm that it has entered Program Mode.
2. Press the “PROGRAM” button two (2) times. The display window will now show “----”.
3. Press the “FULL BREW SELECTION” button. Note the display will start counting minutes and seconds and water will start to flow into the container. When desired volume has been reached, press the “FULL SELECTION” button to stop the water flow. If more water is needed, press the “FULL SELECTION” BUTTON repeatedly until desired level is reached. After the “SELECTION” button is programmed, press the “PROGRAM” button once to exit the Program mode.
4. To program the “HALF BREW SELECTION”, follow steps 1 & 2 instructions above using the “HALF BREW SELECTION” button. After the “SELECTION” button is programmed, press the “PROGRAM” button once to exit the Program mode.
5. To program the “QTR. BREW SELECTION”, follow steps 1 & 2 instructions above using the “QTR. BREW SELECTION” button. After the “SELECTION” button is programmed, press the “PROGRAM” button once to exit the Program mode.

SETTING AUTOMATIC BREW TIME: (Note: The clock must be set in order to have “Brew Start Time” functioning.)

Note: Once set, “Brew Start Time” is stored in the brewer’s internal memory and will be the default “Brew Start Time” unless changed or the unit is reset.

1. Press and Hold the “PROGRAM” button for approximately 3 seconds to enter Program Mode. The colon (:) on the display will begin to flash and a beep is emitted by the brewer to confirm that it has entered Program Mode.
2. Press the “PROGRAM” button one (1) time. The display window will show “0:00” or the default brew time and the set light will flash in the upper right corner of the display window. (Note: you have 30 seconds to begin entering the brew time.)
3. To set hours, press and hold the (+) button; hours on the display will advance from 00 to 12pm. PM time is set when the green dot is lit next to the “PM” in the upper left corner of the display box.
4. To set minutes, press and hold the minus (-) button; minutes will advance from 00 to 59.
5. To set the volume option, (amount of coffee to be brewed at a selected time), press the button that corresponds to the amount desired (full pot, half pot, quarter pot options). The light will light when the button is selected.
6. After setting the brew time, press the program button three (3) times to exit from the menu. The display will show the current time, the set light will be illuminated in the upper right corner of the display window and the light corresponding to the volume selection button will be flashing.

To Cancel the Programmed Brew Time

1. Press and Hold the “PROGRAM” button for approximately 3 seconds to enter Program Mode. The colon (:) on the display will begin to flash and a beep is emitted by the brewer to confirm that it has entered Program Mode.
2. Press the “PROGRAM” button one (1) time. Display will show the actual programmed brewing time
3. To cancel the Programmed Brew Time, press the flashing “VOLUME SELECTION BUTTON”, the light will turn off. Press the “PROGRAM” button three (3) times to exit the Program Mode. The display will show the current time and both the set light and “VOLUME SELECTION BUTTON” will no longer be illuminated.

To Re-Program a Different “VOLUME SELECTION” Brew Button Option

1. Press and hold the “PROGRAM” button for approximately 3 seconds until the display changes and the colon (:) flashes. A beep is emitted by the brewer to confirm that it is in Program Mode. Press the “PROGRAM” button one (1) time. Display will show the actual programmed brewing time
2. Press a different “VOLUME SELECTION BUTTON” to change the current volume option. The previous assigned “VOLUME SELECTION BUTTON” light will turn off. Press the “PROGRAM” button three (3) times to exit the Program Mode. The display will show the current time and the new “VOLUME SELECTION BUTTON” light will be illuminated.

Note: Brewing coffee while the “Brew Start Time” is set, will cancel the current “Brew Start Time”, repeat steps 1 - 6 above, in “SETTING AUTOMATIC BREW TIME:

WARNING: Always make sure an empty container such as a glass decanter, stainless steel decanter or thermos is placed directly beneath the coffee appliance brew cone when a “Brew Start Time” is set.

If this coffee appliance should fail to function properly, unplug it and contact Brewmatic at 800-421-6860

RE-SETTING AUTOMATIC BREW TIME: (FOR THE NEXT DAY)

Note: The clock must be set in order to have “Brew Start Time” functioning.

1. Press and Hold the “PROGRAM” button for approximately 3 seconds to enter Program Mode. The colon (:) on the display will begin to flash and a beep is emitted by the brewer to confirm that it has entered Program Mode.
2. Press the “PROGRAM” button one (1) time. Display will show the default brew time (previous brew start time).
3. **USING DEFAULT (PREVIOUS BREW START TIME):** Press the desired “VOLUME SELECTION BUTTON” and press “PROGRAM” button three (3) times to exit the Program Mode. Your brewer is now set.
4. **NEW BREW TIME:** Follow the above instructions (“SETTING AUTOMATIC BREW TIME”) steps 1 thru 6.

CHANGING BREW TEMPERATURE SETTINGS

Note: The Brewer brews coffee at a preset factory temperature setting of Level #2 (t2). The brewing temperature can be adjusted lower or higher depending upon your personal preference. Level #1 (t1) is the lowest temperature setting while Level #5 (t5) is highest. The temperature increment between each setting (t1 to t5) is about 2 to 3 degrees. This coffee maker is designed to maintain an accurate brewing temperature and compensate at a certain degree for outside influential factors.

Note: for high altitude areas we recommend a lower temperature setting.

1. Press and Hold the “PROGRAM” button for approximately 3 seconds to enter Program Mode. The colon (:) on the display will begin to flash and a beep is emitted by the brewer to confirm that it has entered Program Mode.
2. Press the “PROGRAM” button three (3) times. The display window will show the letter “t” followed by a number. The number (1 to 5) represents the current temperature setting of the unit.
3. To set temperature range, press and hold the plus (+) button or (-) button to scroll between t1 – t5.
4. After selecting the desired range, press the program button once to exit from the menu.

WARNING: Hot coffee can cause serious burns. Make sure that the coffee has stopped coming out of the brew cone before you remove it from the coffee appliance. HANDLE HOT COFFEE CAREFULLY AND PRACTICE CARE WHEN DRINKING.

RESETTING YOUR COFFEE BREWER TO FACTORY DEFAULTS

Note: Resetting the brewer to factory defaults will clear all settings previously programmed and restore default settings programmed at the factory for brew volume and temperature range. Clock Time, Automatic Brew Time, Volume Selections and Temperature Range Setting will be cleared.

To Reset Brewer back to Factory Defaults

1. Turn the power OFF from the main power switch in the back of unit.
2. Press and hold “PROGRAM” button.
3. Keeping “PROGRAM” button depressed, turn the power ON from the main power switch in the back of the unit.
4. Release the PROGRAM button. Clock will flash and now read “00:00”.

PROGRAMMING: ALL MACHINES MADE BEFORE SERIAL NO. 3432583

PROGRAMMING YOUR ELECTRONIC BUILT IN COFFEE APPLIANCE: (See Fig. 2 for Control Location)

SETTING THE CLOCK:

1. Press and hold the program button for 3 seconds; the display will first show the brew time, press once again and the display will show the clock time as indicated by the flashing colon (:).
2. To set hours press and hold the plus (+) button; hours on display will advance from 00 to 12pm. PM time is set when the green dot is lit next to the "PM" in the upper left corner of the display box
3. To set minutes, press and hold the minus (-) button; minutes will advance from 00 to 59.
4. After setting the clock, press the program button twice to exit from the menu.

CHANGING THE PRESET THE VOLUME: (Amount of Coffee to be brewed)

NOTE: When making volume adjustments, always be sure an empty container with 64 ounces capacity is under the brew cone.

1. Press and Hold the "PROGRAM" button approximately 3 seconds and press "PROGRAM" button two (2) times. The display will now be blank.
2. Press the "FULL BREW SELECTION" button. Note the display will start counting minutes and seconds and water will start to flow into the container. When desired volume has been reached, press the "FULL SELECTION" button to stop the water flow. If more water is needed, press the "FULL SELECTION" button repeatedly until desired level is reached.
3. To program the "HALF BREW SELECTION", press the "HALF BREW SELECTION" button and follow step 2 instructions.
4. To program the "QTR. BREW SELECTION", press the "QTR. BREW SELECTION" button and follow step 2 instructions.
5. After all the "SELECTION" buttons are programmed; press the "PROGRAM" button to exit the Program mode.

SETTING BREWING TIME: **NOTE: The clock must be set in order to have "Brew Start Time" functioning.**

1. Press and hold the "PROGRAM" button for 3 seconds, the display will show 00:00 or the default brew time and the set light will flash. (Note: you have 30 seconds to begin entering the brew time.)
2. To set hours, press and hold the (+) button; hours on the display will advance from 00 to 12 pm. PM time is set when the green dot is lit next to the "PM" in the upper left corner of the display box.
3. To set minutes, press and hold the minus (-) button; minutes will advance from 00 to 59.
4. To set the volume option, (amount of coffee to be brewed), press the icon that corresponds to the amount desired (full pot, half pot, quarter pot options). The light will light when the button is selected.
5. After setting the brew time, press the program button once to exit from the menu. The display will show the current time and the light next to the volume selection button will be lit.
6. To cancel the programmed Brew Time, press and hold the "PROGRAM" button. Release button when the program display will show the actual programmed brewing time, press the flashing LIGHT VOLUME "SELECTION" button, the light will turn off and same for the "Set" light. Press the "PROGRAM" button again to exit the Program Mode.
7. To re-program a different "VOLUME SELECTION" brew button option: Press and hold "PROGRAM" button. Release button after the display shows the programmed brewing time. Press a different "VOLUME SELECTION" brew button to change the existing programmed brew button. The previous assigned "VOLUME SELECTION" brew light will turn off. Press the "PROGRAM" button to save the change and to exit the Program Mode.

Note: Brewing coffee while the "Brew Start Time" is set, will cancel the current "Brew Start Time", repeat steps 1 through 5 to re-program.

Note: "Brew Start Time" is set for one brew cycle only. This coffee maker will not automatically revert to the preset brew time. This function must be re-programmed each time.

WARNING: Always make sure an empty container such as a glass decanter; stainless steel decanter or thermos is placed directly beneath the coffee appliance brew cone when a "Brew Start Time" is set.

If this coffee appliance should fail to function properly, unplug it and contact Brewmatic at 800-421-6860

RE-SETTING AUTOMATIC BREW TIME: (FOR THE NEXT DAY)

Note: The clock must be set in order to have "Brew Start Time" functioning.

5. **Press and hold the "PROGRAM" button for 3 seconds; the display will show 00:00 or the default brew time (previous brew start time)**
6. **USING DEFAULT (PREVIOUS BREW START TIME):** Press the desired volume setting and press program button again to exit the menu and your brewer is set.
7. **NEW BREW TIME:** Follow the above instructions ("SETTING AUTOMATIC BREW TIME") steps 1 thru 5.

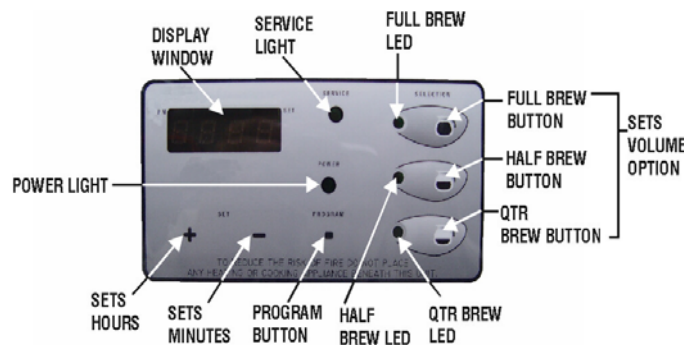


Fig. 2

ADJUSTMENTS

CAUTION: Only those persons trained and qualified in equipment repair should attempt to open this coffee appliance. Make certain the appliance is not in brewing mode before making adjustment to the coffee appliance.

Note: The brewing temperature of this appliance is preset at the factory. To adjust the temperature to a different setting, follow instructions below.

ADJUSTING THE TEMPERATURE: (Fig. 3) (For Machines Made Before Serial Numbers 3432508)

1. Unscrew the wing nut at the back securing the appliance. (Page 3, Item #22)
2. Slowly slide the appliance forward until the complete appliance is out of the mounting bracket.
3. Remove the top cover and locate the control board. (See fig. 3)
4. Press the "Temp Control Adjustment" button to select the brewing temperature desired.

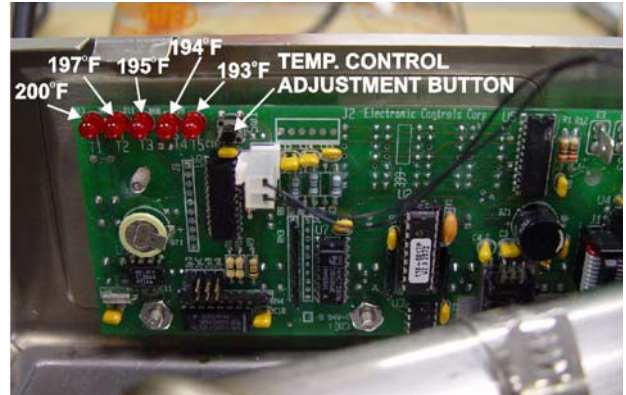


Fig. 3

The light will light indicating the brewing temperature selected

RESETTING THE HI LIMIT THERMOSTAT: (Fig. 4)

5. Unplug the appliance from the power supply.
6. Unscrew the wing nut at the back securing the appliance to the "L" bracket. (Page 3, Item #22)
7. Slowly slide the appliance forward until the complete appliance is out of the mounting plate.
8. Remove the top cover and locate the Hi-Limit Thermostat. (Fig. 4)
9. Push the Red Reset Button on the Hi-Limit Thermostat. Visually inspect the appliance for any loose wires or fittings.
10. Install the top cover and slide appliance on the mounting plate and secure with the wing nut.
11. Plug in the appliance to the power supply.

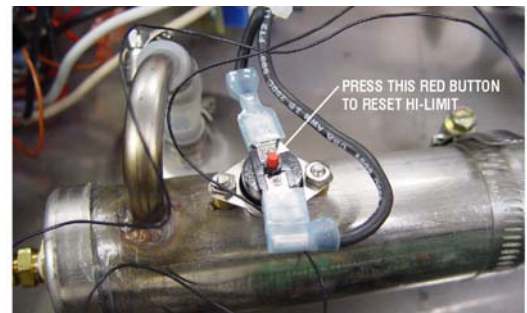


Fig. 4

Press red button to reset the hi-limit thermostat

MAINTENANCE & CLEANING

- CAUTION:** Only those persons trained and qualified in equipment repair should attempt to open and clean the inside of this coffee appliance.
- CAUTION:** Turn the power switch off, unplug the power supply cord and allow the coffee appliance to cool before cleaning.
- Note:** Do not use abrasive or harsh cleaners as they may damage the finish of this coffee appliance.
- Note:** Failure to follow these cleaning instructions may damage this coffee appliance and may void the warranty.

As needed, clean stainless steel surfaces with a mild, non-abrasive stainless steel cleaner. Other surfaces can be cleaned with a soft damp cloth or mild liquid detergent.

The brew cone should be rinsed with water after each brew cycle. At least once a week the brew cone should be washed by hand with a **mild** detergent. Rinse well after washing.

As necessary, the area between the brew cone rails and above the brew cone should be wiped clean with a damp cloth as coffee oils will gradually collect on these surfaces. (*Fig. 6*)

Once a week, more often in hard water areas, the spray head, located above the brew cone, should be removed and cleaned. (*Fig 7*)



Fig. 6



Fig. 7

Please Note: The Factory recommends that when this unit is not in use for prolonged periods of time, that the coffee appliance be unplugged

LIMITED WARRANTY

Brewmatic warrants this product to be free of defects in material and workmanship for a period of one (1) year from the original date of purchase. Within this warranty period, Brewmatic will repair or replace, at its option, any part providing it's defective in material or workmanship. Labor is included within this warranty only during the first ninety (90) days of the warranty period.

This warranty excludes defects caused by negligence, misuse, alteration, accident, prior service by unauthorized persons, and failure to follow the installation and operating instructions, including without limitation use of improper voltage or wiring and improper cleaning.

This warranty applies only to new products and extends only to the original purchaser. This warranty is valid only in the United States of America and its possessions.

The product warranted hereby is sold only for commercial use and is not intended for personal, family, or household purposes.

To obtain warranty service, you must notify and deliver the product at your expense, with proof of purchase, to your local Brewmatic representative or to the Brewmatic Customer Service Division, within the warranty period. The repaired product will be returned to you at Brewmatic's expense.

No Brewmatic representative or other person is authorized to add to or alter the foregoing in any respect.

THE FOREGOING WARRANTY IS IN LIEU OF ALL OTHER WARRANTIES EXPRESSED OR IMPLIED, INCLUDING ANY IMPLIED WARRANTIES FOR MERCHANTABILITY AND FITNESS FOR A PARTICULAR PURPOSE. THIS WARRANTY EXCLUDES CONSEQUENTIAL DAMAGES.

Some states do not allow limitation or exclusion of implied warranties or consequential damages. In such cases the limitations stated above may not apply to you, and your rights will be determined by applicable law.



20333 S. Normandie Ave., Torrance, CA 90502
(310) 787-5444 • (800) 421-6860 • Fax (310) 787-5412
USA E-mail: brew@brewmaticusa.com
Int'l E-mail: brew_equip@brewmaticusa.com
Website: brewmatic.com