

USER MANUAL

D2A™

DIGITAL TO ANALOG CONVERTER

*Improve Your Standard TV
Picture Quality NOW!*



August 2008
Rated
**BEST
PICTURE
QUALITY**
by Popular
Consumer Products
Testing Organization

HIGH-DEFINITION TELEVISION
HDTV
COMPATIBLE

Model CM-7000

Remote control included.
For use with any SDTV and digital-compatible
antenna, both purchased separately.

CM-7000 D2A DIGITAL TO ANALOG CONVERTER

PLEASE READ THIS OWNER'S GUIDE

Please take the time to follow this owner's guide carefully. It will help you set up and operate your system properly, and enjoy all of its advanced features. Save your owner's guide for future reference.

WARNING: To reduce the risk of fire or electric shock, do not expose the system to rain or moisture.

WARNING: This apparatus shall not be exposed to dripping or splashing, and objects filled with liquids, such as vases, shall not be placed on the apparatus. As with any electronic products, use care not to spill liquids in any part of the system. Liquids can cause a failure and/or a fire hazard.

The CAUTION marks shown here are located on the back of your CM-7000 D2A Digital to Analog Converter.



The lightning flash with arrowhead symbol, within an equilateral triangle, alerts the user to the presence of uninsulated dangerous voltage within the system enclosure that may be of sufficient magnitude to constitute a risk of electric shock.

The exclamation point within an equilateral triangle alerts the user to the presence of important operating and maintenance instructions in this owner's guide.



CAUTION

To prevent electric shock, match wide blade of plug to wide slot, insert fully.



CAUTION

No open flame sources, such as lighted candles, should be placed on the apparatus.

BATTERIES

Please dispose of used batteries properly, following any local regulations. Do not incinerate.

© 2010 Channel Master. Channel Master is a registered trademark. All rights reserved. No part of this document may be reproduced, modified, distributed or otherwise used without written permission. The distinctive design of the D2A Digital Converter is a trademark of Channel Master.

The Channel Master logo is used under licensed agreement.

Manufactured under license from Dolby Laboratories. "Dolby" and the double-D symbol are trademarks of Dolby Laboratories. Confidential Unpublished Works. © 1992-1997 Dolby Laboratories. All rights reserved.

TABLE OF CONTENTS

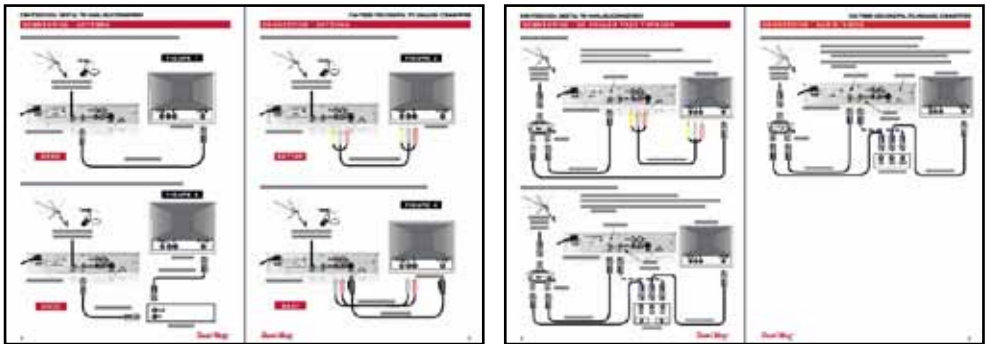
QUICK SET-UP GUIDE	2
DIGITAL TV TRANSITION	2
INTRODUCTION	3
Features	3
SAFETY	3
SPECIFICATIONS	4
CONNECTING - ANTENNA	5
CM-7000 to TV using RF Coaxial Cable	5
CM-7000 to VCR using RF Coaxial Cable	5
CM-7000 to TV using RCA Cable	6
CM-7000 to TV using RCA Cable & S-Video Cable....	6
Analog Pass Through	7
Audio/Video	8
MENU TREE	9
REMOTE CONTROL	10
ONLINE GUIDE	11
Channel Banner	11
Information Banner	11
Menu	12
Menu - Channel Edit	12
Channel Scan	13
Re-Scanning for Digital Channels	13
Set Up	14
Set Up - Closed Caption	15
Turn Closed Caption On/Off	15
Set Up - Parental Control	16
Quick Menu - Audio	16
CONTACT / WARRANTY	17

CM-7000 D2A DIGITAL TO ANALOG CONVERTER

QUICK SET-UP GUIDE

Connect the CM-7000 using one of the methods that best matches the connections on your TV (see pages 5 to 8).

1. Select either Channel 3 or 4 with the CH3/CH4 switch on the back of the CM-7000.
 - a. Set your TV to the corresponding Channel 3 or 4 if connecting via RF COAXIAL CABLE (page 5).
 - b. Set your TV to VIDEO or AUXILIARY if connecting via RCA or RCA & S-VIDEO CABLE (page 6).
2. Press MENU on the CM-7000 remote. The main menu should appear on the TV screen.
3. Press the ▲▼ button and "TERRESTRIAL" should appear on the menu.
4. Press OK button 3 times to start the AUTO CHANNEL SCAN.
5. When the AUTO SCAN is complete, press EXIT. Use the ▲▼ buttons to begin watching digital TV.



See pages 4 to 7 to view image details.

INFORMATION REGARDING THE DIGITAL TV TRANSITION

June 12, 2009, television receivers with only an analog broadcast tuner started requiring a converter box to receive full power, over the air broadcasts with an antenna due to the USA's nationwide transition to digital broadcasting. Analog only TVs continue to work as before to receive low power, Class A or translator TV stations, cable/satellite services, gaming consoles, VCRs, DVD players, and similar products.

Information about the DTV transition is available at:

www.DTV.gov or 1.888.CALL.FCC

Information about subsidized coupons for digital to analog converter boxes (like the CM-7000) is available at:

www.dtv2009.gov or 1.888.DTV.2009

The CM-7000 digital to analog convert box is capable of receiving digital broadcasts via a TV antenna and displays them on an analog TV set. This converter box does not include analog pass through, so the use of an A/B switch or splitter is required to receive both digital and analog signals from one antenna (see pages 7 and 8).

INTRODUCTION

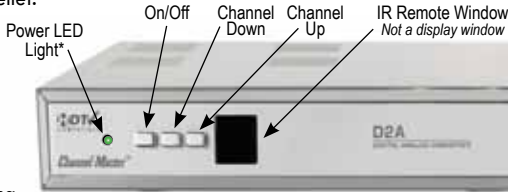
The Channel Master by PCT CM-7000 is a high quality HD/SD (high definition/standard definition) digital ATSC to analog NTSC television converter box. Using the CM-7000 for direct terrestrial FTA HD reception allows users to view HD programs on SD TV sets.

The combination of a CM-7000 Digital Analog Converter with a Channel Master digital antenna is a perfect solution for terrestrial reception in a very wide range of reception conditions and landscape relief.

For energy saving, which is in compliance with NTIA recommendations, the Auto-Sleep Function activates Standby mode four (4) hours after last user entry from the remote control, but not before the end of a currently viewed event.

FEATURES

- Converts all digital video formats, including HD (High Definition) into SD (standard definition) analog format
- Easy installation and operation
- Automatic and manual programming
- Electronic Program Guide (EPG) support
- On Screen Display (OSD)
- Closed Caption (CC)
- Full function remote control
- Low power consumption
- Auto-Sleep function



* Green = ON, Orange = Stand-By, Red = Booting Up

Note: Initial boot up process occurs when the unit is first plugged in. Boot up may take up to 45 seconds to complete and is followed by a green LED.



SAFETY!

POWER	Power this box only from a power source within the specified voltage range To prevent electrical shock, be sure the electrical plug used on the box's power cord matches the electrical outlet in use. Do not open the top cover when the box is plugged into an electrical outlet.
CONNECTION	Connect all peripheral devices before plugging the power cord into the electrical outlet. Unplug power cord from the electrical outlet before disconnecting any peripheral devices.
GROUNDING	Terrestrial antenna must be grounded to provide protection from lightning and build-up of static electricity.
LIGHTNING	For protection from lightning or when the box is left unattended for a long period, disconnect it from the power source.
VENTILATION	The slots on the top of the CM-7000 must be left uncovered to allow proper airflow to the unit. Do not cover the top with fabric, paper, or other materials. Do not stack electronic equipment on top of the CM-7000.
OVERHEATING	Do not install this box on soft furnishings or carpet. Do not expose this box to direct sunlight or place it near a heater. Do not install this box in small or non-ventilated openings between furniture.
LIQUIDS	This box should not be exposed to liquids nor should objects filled with liquid be placed on top of the box.
ENVIRONMENT	CM-7000 is for indoor use only under specified conditions.
CLEANING	Disconnect the box from the electrical outlet before cleaning. Use a light damp cloth (no solvents) to clean the box.

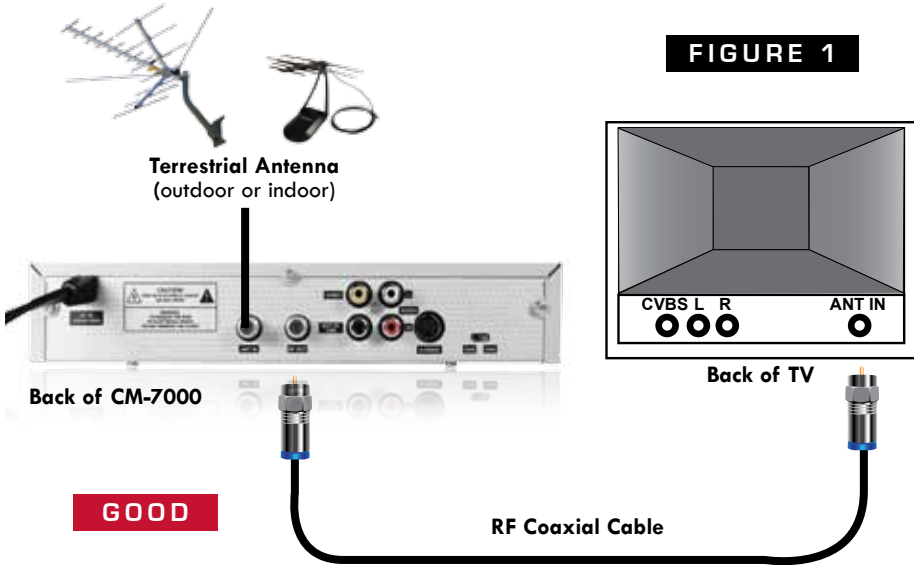
SPECIFICATIONS

TUNER	
Frequency Range	54 to 864 MHz
Input Impedance	75 Ohm
Input Connector	F-Type, Female
Channel Bandwidth	6 MHz
Input Dynamic Range	-83 to -5 dBm / SNR - 15 dB
DEMODULATOR	
Type	8VSB / ATSC A/53 compliant
Performance	ATSC A/74 compliant
Input Video Formats	1080i, 720p, 480i, 480;
VIDEO	
Output Format	480i
Aspect Ratio	4:3 / 16:9 with letter box pan and scan
CONNECTORS	
Video	
Composite Video	RCA
Component Video	S-Video
Audio	
Left / Right	RCA, Stereo
RF MODULATOR	
Output RF Connector	F-Type, Female
Channel	3 / 4, Selectable, Mono Audio
POWER	
Supply	120 VAC / 60 Hz
Consumption "ON"	8 W
Consumption "STANDBY"	2 W
Auto-Sleep Mode	4 hours after last remote control entry
GENERAL	
Dimensions (W x L x H)	22 x 16 x 4 cm / 8.7 x 6.3 x 1.6 in
Weight	0.9 kg / 2.0 lbs
ENVIRONMENT	
Operating Temperature	0 to 60° C / 32 to 140° F
Relative Humidity	10 to 90% noncondensing

CONNECTING - ANTENNA

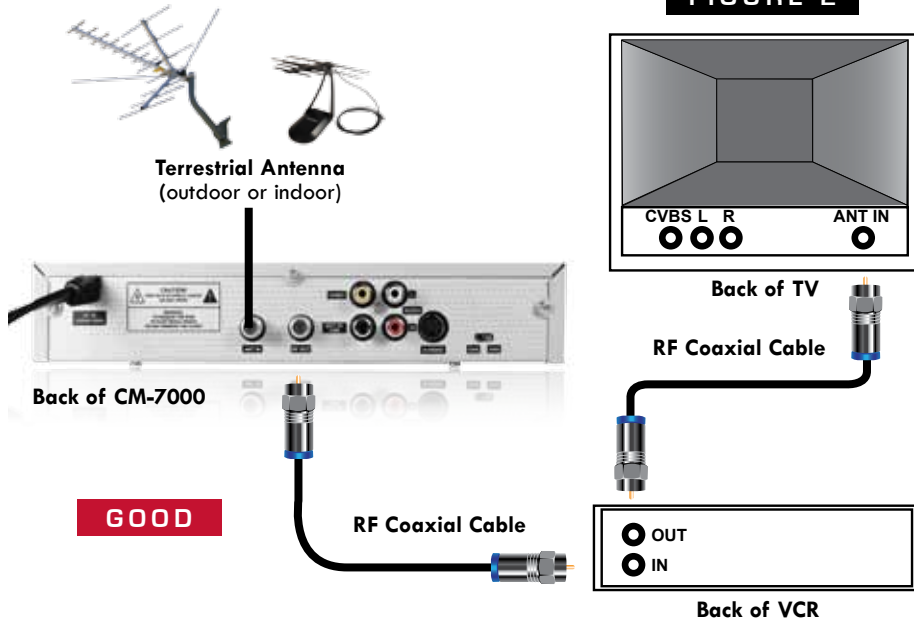
CONNECTING CM-7000 TO A TV USING RF COAXIAL CABLE

FIGURE 1



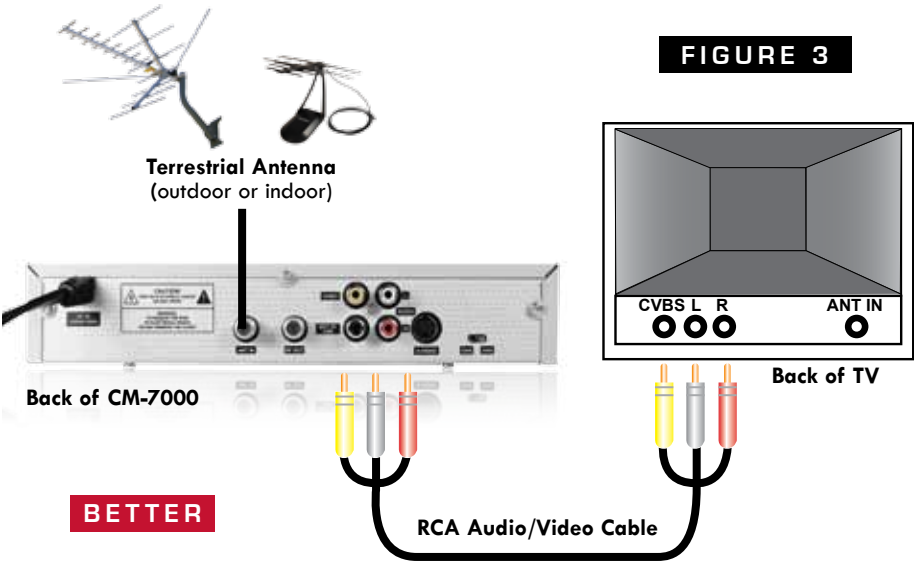
CONNECTING CM-7000 TO A VCR USING RF COAXIAL CABLE

FIGURE 2

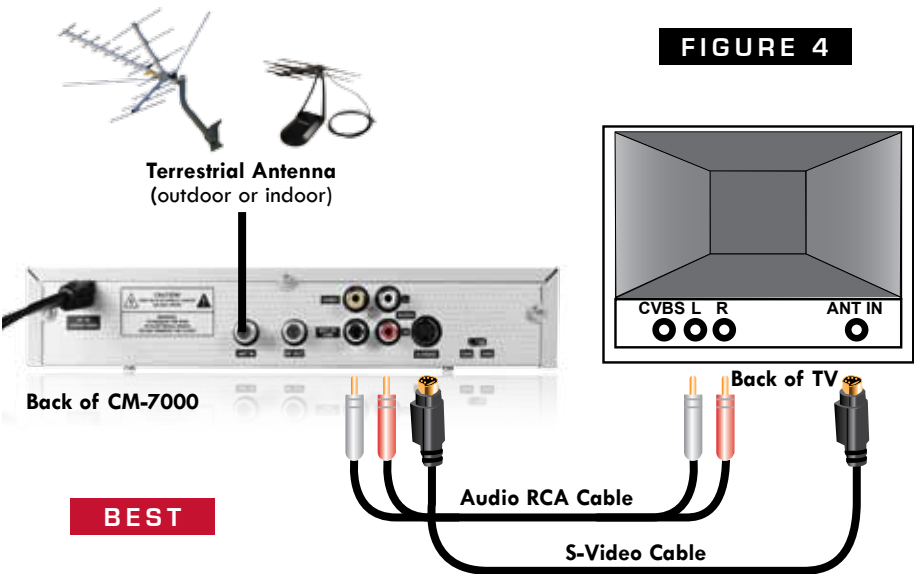


CONNECTING - ANTENNA

CONNECTING CM-7000 TO A TV USING RCA CABLE



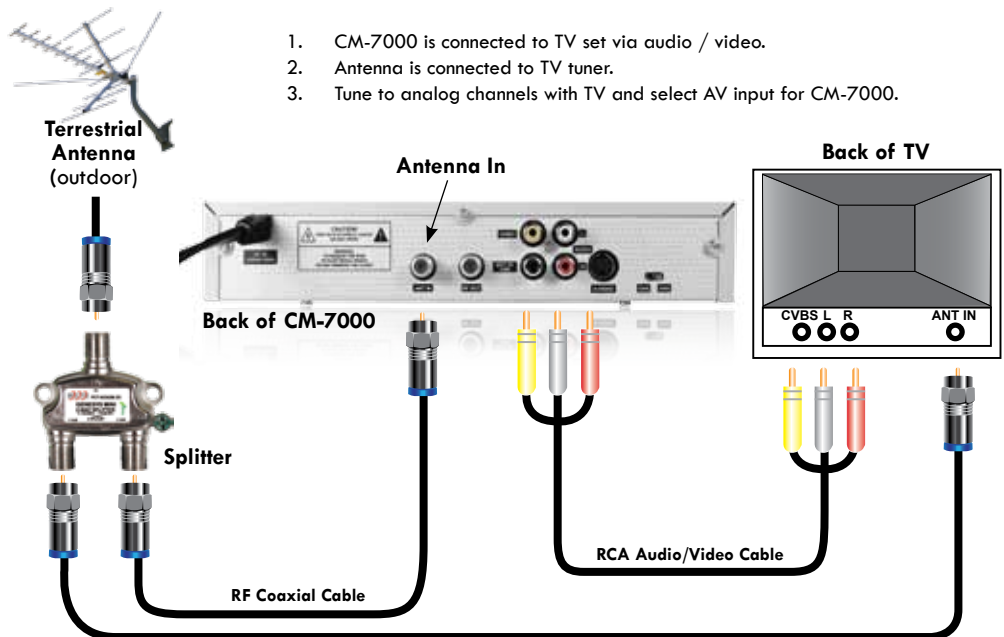
CONNECTING CM-7000 TO A TV USING RCA & S-VIDEO CABLE



CONNECTING - ANTENNA

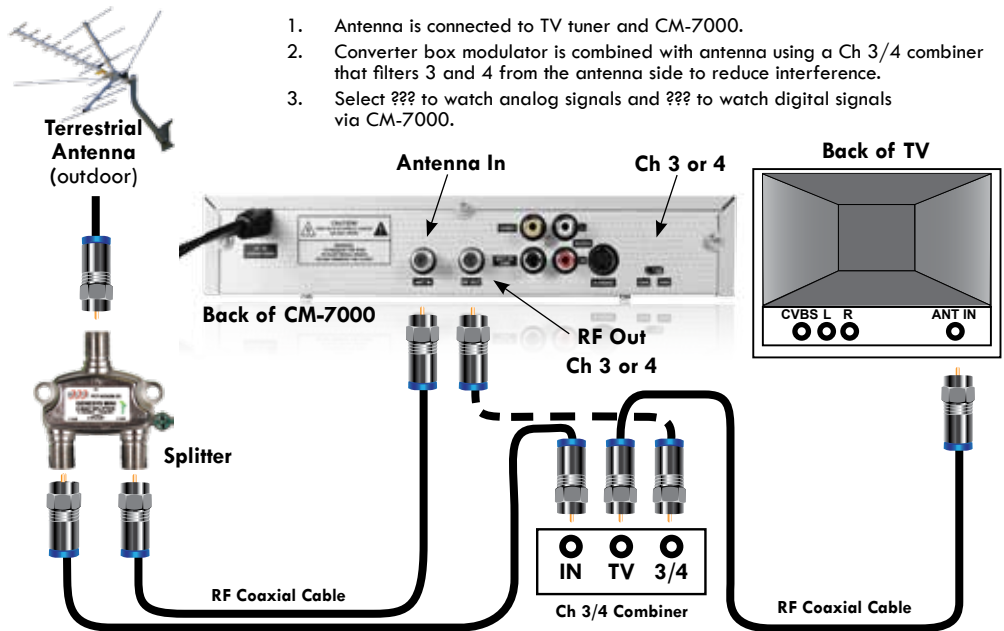
ANALOG PASS THROUGH

1. Select either Channel 3 or 4 with the CH3/CH4 switch on the back of the CM-7000.
 - a. Set your TV to the corresponding Channel 3 or 4 if connecting via RF COAXIAL CABLE.
 - b. Set your TV to VIDEO or AUXILIARY if connecting via RCA or RCA & S-VIDEO CABLE.
2. Press MENU on the CM-7000 remote. The main menu should appear on the TV screen.
3. Press the ▲▼ button and "TERRESTRIAL" should appear on the menu.
4. Press OK button 3 times to start the AUTO CHANNEL SCAN.
5. When the AUTO SCAN is complete, press EXIT. Use the ▲▼ buttons to begin watching digital TV.



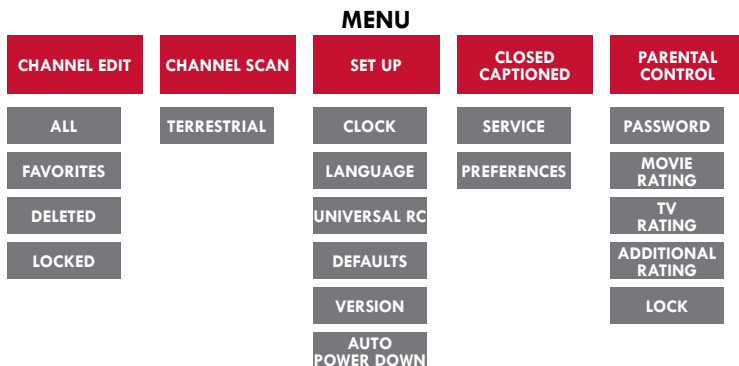
CONNECTING - ANTENNA

VIA SPLITTER COMBINER USING FILTERING DEVICE HOOKUP



MENU TREE

DETAIL OF THE SET-UP FUNCTIONS.



SET UP MENU FUNCTIONS

CLOCK

Sets date and time. Has auto or manual setting. Auto setting is recommended. To set:

1. Press **Menu**
2. Use **▲▼** menu buttons to select SET UP screen
3. Press **OK** to select CLOCK
4. Press **OK** to select DATE and TIME
5. Use **▲▼** buttons to select AUTO DATE and TIME
6. Press **right** button to select TIME ZONE
7. Use **▲▼** buttons to change TIME ZONE
8. Press **►** button to select DST
9. Use **▲▼** buttons to change DST
10. Press **Exit** to store

LANGUAGE

Used to select between three (3) different onscreen display languages. To change:

1. Press **Menu**
2. Use **▲▼** buttons to select SET UP screen
3. Press **OK** to select LANGUAGE
4. Use **▲▼** buttons to change LANGUAGE choice
5. Press **OK** to select
6. Press **Exit** to store

UNIVERSAL RC

Universal remote control function. Used to turn on or off the universal remote control function. Factory setting is set to ON. Use the Pioneer Cable Box code if using a universal remote. If using a Channel Master remote controlled rotator, you may turn the universal remote control feature OFF to avoid conflicts between the rotator remote control and the converter box. To turn OFF:

1. Press **Menu**
2. Use **▲▼** buttons to select SETUP screen

3. Press **OK** to select Universal RC
4. Press **OK** to select **ON**
5. Press **▲▼** buttons to change to **OFF**
6. Press **OK**
7. Press **Exit** to store

DEFAULTS

Restores setting to factory default settings. The default password is 0000. To reset password:

1. Press **Menu**
2. Use **▲▼** buttons to select PARENTAL CONTROL screen
3. Press **OK** to select PASSWORD
4. Press **OK** then **▼** button to select NEW PASSWORD
5. Enter **0000** in new password field
6. Press **▼** button to select RESET PASSWORD
7. Press **OK**
8. Password is now set to 0000

AUTO POWER DOWN

Turns unit off after four (4) hours without user input. This is a required, energy saving feature. Factory default is ON and the unit will shut OFF after four (4) hours without user input (ex: pressing **CH+**, **CH-**, or **Info**). To turn off this feature:

1. Press **Menu**
2. Use **▲▼** buttons to select SET UP screen
3. Press **OK** and a warning screen appears
4. Press **►** button to select YES
5. Press **OK**
6. Press **OK** to uncheck the AUTO POWER DOWN box
7. Press **Exit** to store

The length of time to power down, and the option to turn off the warning screen are also accessed from this menu.

REMOTE CONTROL

REMOTE CONTROL



NOTE: To program a universal remote to operate the CM-7000 digital to analog converter box, use Pioneer cable box codes.

Mute	Set volume to mute Toggles mute on / off
Option	Not used
Info	Invokes the information banner
Standby	Enters and exits standby mode
Menu	Invokes Menu screen Exit to previous Menu item
FAV	Invokes Channel List menu Switches between Channel List and Favorites List
Exit	Exit from Menu
Arrow Up ▲	Move focused item in menu or channel list
Arrow Down ▼	Move focused item in menu or channel map
Arrow Left ◀	Switch to Favorite Channel List in Channel List Menu Change selection in menu Switch to the next channel in EPG screen
Arrow Right ▶	Switch to Favorite Channel List in Channel List Menu Change selection in menu Switch to the previous channel in EPG screen
OK	Select a channel or menu option
Back	Switch to previously viewed channel
PgU	Unused
PgD	Unused
0 - 9	Numeric key to change channel number or numeric value
CH +	Channel up
CH -	Channel down
Vol +	Increase volume
Vol -	Decrease volume
Audio	Select audio
Wide	Select picture shape
Subtitle	Select Closed Caption (CC)
Text	Unused
Guide	Invokes the EPG screen
Universal Remote Code	For universal remote, use Pioneer Cable Box code
Entering Channel Numbers	When entering channel numbers using the numeric keypad, no "." or "-" is necessary to tune directly to a desired channel. For example: to tune to channel 8.3, press 83 and ENTER; to tune to channel 15.2, press 152 and ENTER.

ONLINE GUIDE

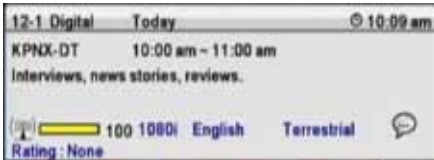
CHANNEL BANNER

- Provides channel major & minor numbers, station name and current time.
- Gets invoked during channel number entry, channel up/down.
- Automatically times out.



INFORMATION BANNER

- Provides channel major & minor numbers, station name and current time, program name/description/duration, video resolution, audio language, rating, cc information and signal strength.
- Allows user to browse thru the program description.
- **Info** button on remote invoke information banner.
- Allows user to fine tune antenna using signal strength meter.
- Banner does not timeout. Press **Info** to clear.



MENU

- Allows user to configure the system with easy to use graphical interface.
- Channel Edit
 - Channel Scan
 - System Setup
 - Closed Captions
 - Parental Control
- **Menu** button on remote allows access to the menu.
- Use **▲▼◀▶**, **Menu/OK** buttons to navigate the menu.



MENU - CHANNEL EDIT

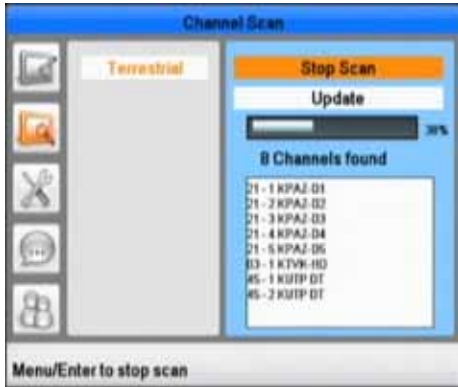
- Allows user to set channel as favorite.
- Allows user to delete channel.
- Allows user to browse locked channel.
- Invoke menu using **Menu** key.
- Navigate to channel edit options using **▲▼** keys, click **OK** key to access channel edit options that allows you to set channel as a favorite or delete a channel.



ONLINE GUIDE

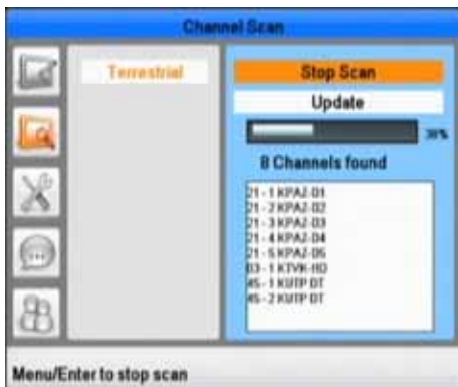
CHANNEL SCAN

- Automatically searches all terrestrial channels.
- Automatically updates the channel list with only newly found channels.
- Previously set channel properties such as favorite, delete and lock remains the same.
- List the channels that are added to the channel list.
- Monitor the progress of the channel scan.



Access channel scan OSD:

- Invokes menu using **Menu** key.
 - Use **▲▼** and **OK** keys to access channel scan.
 - Select either terrestrial or cable to search respective channels.
 - Select either scan all or update and click **OK** to start channel scan.
 - Scan/update operation shows progress and lists channels as they are found.
 - Update is used to add channels without losing previously found channels.
- If using an antenna rotator, the update feature allows you to turn the antenna to a different direction and add channels without losing the previously scanned channels.
- Use **Menu** key return back to the previous option, **Exit** key to quit the menu any time.



RE-SCANNING FOR DIGITAL CHANNELS

Why Re-scan?

During the digital transition, digital stations will continue to come on air, so you may want to consider re-scanning on a periodic basis to get all of the digital programming available.

Some digital stations that are already on air are moving to different channel numbers at the end of DTV transition, you may need to re-scan again even after the conversion date to ensure that you receive all of the digital stations broadcasting in your area.

1. Press **MENU** on the CM-7000 remote.

The **main menu** should appear on the TV screen.



2. Press the **▲▼** button,

TERRESTRIAL should appear on the menu.



3. Press **OK** button **3 times** to start the **AUTO CHANNEL SCAN**.



4. When the **AUTO SCAN** is complete, press **EXIT**.



5. Use the **▲▼** buttons to begin watching digital TV.



SET UP

Provides easy user interface to set the system properties like date & time, OSD language, etc.

- Set date and time either automatically or manually.
- Choose English, Spanish, or French as OSD language.
- Set audio options:
 - Internal speakers ON/OFF
- Returns all settings to factory defaults.



To access Setup OSD:

- Invokes menu using **Menu** key.
- Use **▲▼** and **OK** keys to access Setup.
- Select Clock, Language, Defaults, and Version. Click **OK** to access respective option.
- Clock allows user to set the system time, time zone, daylight saving time.
- Language option allows user to select OSD languages.
- Use **Menu** key return back to the previous option, **Exit** key to quit the menu any time.

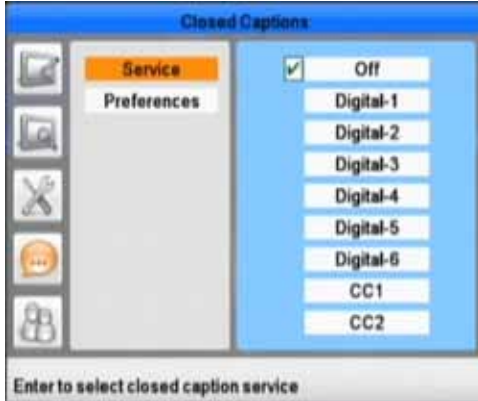


ONLINE GUIDE

SET UP - CLOSED CAPTION

Provides easy to use interface to select one of the caption services and caption font properties

- Allows user to select one of the available closed caption services (analog and digital).
- Allows font set up of the caption like size, style, edge effects, foreground and background color/transparency.
- Sample caption window displayed reflects caption preferences.



To access Setup OSD:

- Invokes menu using **Menu** key.
- Use **▲▼** and **OK** keys to access Closed Captions.
- Select Services or Preferences. Click **OK** to access respective options.
- Services allows access to select a service.
- Preferences allows access to set captioning font preferences.
- Use **Menu** key return back to the previous option, **Exit** key to quit the menu at any time.



TURN CLOSED CAPTION ON/OFF

To toggle closed captioning on or off:

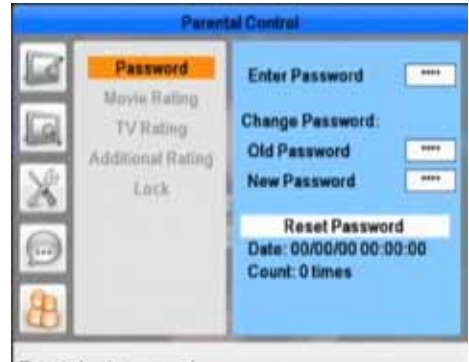
- Press the **Subtitle** remote button.



SET UP - PARENTAL CONTROL

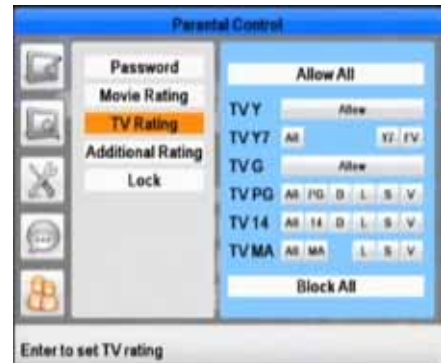
Provides easy to use interface to set movie and TV limits to block a program based on its rating

- Allows access to set, reset, and change password.
- Resetting password update Date and Count that will indicate when the password was last reset and how many times it was reset.
- Allows access to set movie rating limits to block the programs exceeding the set rating limits.
- Allows access to set TV rating limits to block the programs exceeding the set rating limits.
- Additional rating menu displays program DRRT and allows the user to block those ratings.
- Allows access to block the channel completely irrespective of program ratings.



To access Setup OSD:

- Invoke menu using **Menu** key.
- Use **▲▼** and **OK** keys to access Parental Controls.
- Provide password and navigate **▲▼** and click **OK** to access the Movie / TV / Lock screens.
- Access Movie, TV or Additional rating screen to set each limits.
- Access Lock to block channel completely irrespective of rating.
- Use **Menu** key return back to the previous option, **Exit** key to quit the menu at any time.



QUICK MENU - AUDIO

Quick menu that gets invoked with a single key on remote to select one of the multiple available audio.

- Provides the user with quick access to the list of audio available for that particular program.
- Audio key on remote shall invoke this menu, same key shall be used to browse thru the audio list.
- **Exit** key is used to quit this menu, or it timesp out after a few seconds.



CONTACT/ WARRANTY

CONTACT

Channel Master

2260 W. Broadway Road, Suite 101
Mesa, AZ 85202
USA

Customer Service

Tel +1.877.746.7261
Fax +1.877.746.7261
email store@channelmaster.com
web www.channelmaster.com

Technical Support

tel +1.877.746.7261

WARRANTY

PRODUCT RETURN POLICY & PROCEDURE

In Warranty / Out of Warranty / Credit Procedure

WARRANTY PERIOD:

90-day warranty applies to all Channel Master Products* Dealers & Consumers: Dealers and consumers can return any In-Warranty Channel Master product to the Warranty department for repair or replacement. For In-Warranty service the consumer or dealer must call Technical Service and request an RMA number in order to return the product. The returned product must have the RMA number visible on the box and must include the bill of sale showing the unit is within the warranty period. If the unit is found to be defective under our Warranty Policy Channel Master will repair or replace the item at no charge. Products outside of the warranty period should not be returned to Channel Master with the exception of any product requested by Technical Support to be accessed for quality assurance purposes. **Technical Service Phone:** +1.877.746.7261

Address: Channel Master: Consumer Warranty RMA # ----

2260 West Broadway Road Mesa, AZ 85202

* Some products have extended term warranty periods

WARRANTY GENERAL TERMS: 1.1 Subject to the provisions of this Warranty,

CHANNEL MASTER warrants that the equipment and software described in Paragraph 1.2 will conform to our specifications in all material respect and that the equipment will be free from material defects in materials and workmanship during the Limited Warranty period. 1.2 This Warranty applies to all original purchases by Customers of CHANNEL MASTER ("Equipment"). The warranties set forth herein are not transferable. 1.3 The Effective period of this Warranty will start on the date of purchase of the Equipment or the date of installation by a CHANNEL MASTER approved technician and will end, for the Equipment, ninety (90) days later (for all component parts and system upgrades), unless otherwise expressed or provided herein (in each case the "Warranty Period"). **RETURN OF EQUIPMENT UNDER WARRANTY: 2.1** If an item of Equipment malfunctions or fails in normal use within the applicable Warranty Period: (a) the Customer shall notify CHANNEL MASTER within thirty (30) days of the problem. (b) CHANNEL MASTER will, at its option, either resolve the problem over the telephone or provide the customer with a Return Authorization ("RMA") Number and the address to which the customer may ship the defective item; (c) If the problem can not be resolved over the telephone, the Customer shall attach a label showing the RMA number to each returned item, and include a description of the problem. The Customer shall, at his or her own cost, properly pack the item to be returned, mark the RMA# on the outside of the box, prepay the insurance and shipping charges, and ship the item to the specified CHANNEL MASTER location. (d) Unauthorized return of any equipment, whether in or out of warranty, will be subject to a handling charge, in addition to all repair and all transportation charges. (e) CHANNEL MASTER will, at its sole option, repair or replace the returned item. If replaced, the replacement item may be new or refurbished; if refurbished it will be equivalent in operation to new Equipment. If a returned item is replaced by CHANNEL MASTER, the Customer agrees that the returned item will become the property of CHANNEL MASTER. (f) CHANNEL MASTER will complete the exchange of CHANNEL MASTER manufactured equipment returned under this Warranty within a reasonable time, subject to lead-times from factory, and will make a good faith effort to minimize any and all delays where possible; and (g) CHANNEL MASTER will, at its cost, ship the repaired item or replacement to the Customer. If the Customer requests express shipping, the Customer will pay CHANNEL MASTER an expediting fee. 2.2 Equipment which is repaired or replaced by CHANNEL MASTER under this Warranty will be covered under all of the provisions of this Warranty for the remainder of the applicable Warranty period (for that particular equipment) from the date of repair or replacement, whichever is longer. 2.3 If equipment is repaired beyond effective warranty dates or if abnormal usage had occurred, Customer shall be charged applicable rates and the Customer will be advised of the estimated charges prior to repair by CHANNEL MASTER's authorized service center. 2.4 The price of out-of-warranty repairs payable by the Customer will be based on standard labor and parts prices in effect at the time of the repair. CHANNEL MASTER will use its best efforts to ensure that the cost of such repair, exchange, refurbishing, or substitution will not exceed the original price of Product. 2.5 If the problem reoccurs within the warranty period, CHANNEL MASTER will, at its option: (1) re-perform the service; (2) replace the product pursuant to the terms of this warranty, (3) permit Customer to return the product and issue a refund pursuant to this warrant, or (4) refund the amount the Customer paid for the services. **PRODUCT MODIFICATION: 4.1** CHANNEL MASTER reserves the right to make changes or improvements to its products, during subsequent production, without incurring the obligation to install such changes or improvements on previously manufactured or sold products. **FORCE MAJEURE: 5.1** CHANNEL MASTER will not be liable if its performance under this warranty becomes commercially impracticable due to any contingency beyond CHANNEL MASTER's reasonable control, including acts of God, fires, flood, wars, sabotage, civil unrest, accidents, labor disputes or shortages, government laws, rules and regulations, whether valid or invalid, inability to obtain material, equipment or transportation, incorrect, delayed or incomplete specifications, drawings or data supplied by Customer (collectively "Force Majeure"). **LIMITATIONS AND QUALIFICATIONS OF WARRANTY: 6.1** This Limited Warranty extends only to the original purchaser of the Equipment and is in lieu of all other express or implied warranties, including those of merchantability and fitness for a particular purpose. This Warranty does not apply to any damage, defect of failure caused by: (a) any part of the equipment having been modified, adapted, repaired, maintained, transported or relocated by any person; (b) Storage or environmental characteristics which do not conform to the applicable sections of the appropriate Equipment Manual or Instruction Sheet; (c) Failure to conform with the Equipment Operating Instructions in the applicable Equipment Manual or Instruction Sheet; (d) External causes, including external electrical stress or lightning, or use in conjunction with incompatible equipment, unless such use was with CHANNEL MASTER's prior written request; (e) Cosmetic damage; (f) Accidental damage, negligence, modification, mishandling, abuse or misuse; or (g) Force Majeure. **LIMITATION ON DAMAGES: 7.1** THIS WARRANTY IS THE CUSTOMER'S EXCLUSIVE WARRANTY FOR THE EQUIPMENT, CHANNEL MASTER SPECIFICALLY DISCLAIMS ALL OTHER WARRANTIES OF ANY KIND, EXPRESS OR IMPLIED, INCLUDING ANY WARRANTIES OF FITNESS FOR A PARTICULAR PURPOSE AND OF MERCHANTABILITY. 7.2 CHANNEL MASTER WILL NOT BE LIABLE IN TORT, INCLUDING LIABILITY IN NEGLIGENCE OR STRICT LIABILITY, AND WILL HAVE NO LIABILITY AT ALL FOR INJURY TO PERSONS OR PROPERTY. CHANNEL MASTER'S LIABILITY FOR FAILURE TO FULFILL ITS OBLIGATIONS UNDER THIS WARRANTY OR ANY OTHER LIABILITY UNDER OR IN CONNECTION WITH THE EQUIPMENT WILL BE LIMITED TO THE AMOUNT OF THE PURCHASE PRICE OF THE EQUIPMENT AT THE TIME OF ORIGINAL PURCHASE. THE REMEDIES STATED IN THIS WARRANTY ARE THE CUSTOMER'S EXCLUSIVE REMEDIES AGAINST CHANNEL MASTER REGARDING THE EQUIPMENT. 7.3 EVEN IF CHANNEL MASTER HAS BEEN NOTIFIED OF THE POSSIBILITY OF THEM, CHANNEL MASTER WILL NOT BE LIABLE FOR ANY INDIRECT, INCIDENTAL, SPECIAL OR CONSEQUENTIAL DAMAGES, INCLUDING LOST PROFITS AND REVENUES, FAILURE TO REALIZE EXPECTED SAVINGS, ANY CLAIM AGAINST A CUSTOMER BY A THIRD PARTY, OR ANY OTHER COMMERCIAL OR ECONOMIC LOSSES OF ANY KIND. 7.4 THESE LIMITATIONS AND DISCLAIMERS ARE NOT MADE BY CHANNEL MASTER WHERE PROHIBITED BY LAW.

Channel Master[®]