



Label printer *eOS* series

Made in Germany

Overview types EOS, one concept - two sizes



Type B with tear-off edge

For use in tear-off mode, label needs to extend by min. 30mm.

Label printer	EOS1		EOS4	
Print resolution dpi	203	300	203	300
Print width up to mm	108	105,7	108	105,7
Print speed up to mm/s	125	125	125	125
Label rolls Ø mm	155	155	210	210



Type C with cutter

Labels or continuous material are cut at a height of min. 10 mm.
The modular cutter may be added in the field.

Label printer	EOS1		EOS4	
Print resolution dpi	203	300	203	300
Print width up to mm	108	105,7	108	105,7
Print speed up to mm/s	125	125	125	125
Label rolls Ø mm preferably winded outside	155	155	210	210



Type P with dispensing function

Label height when dispensing is 20 - 100 mm.
The dispensing module may be added in the field.

Label printer	EOS4	
Print resolution dpi	203	300
Print width up to mm	108	105,7
Print speed up to mm/s	125	125
Label rolls Ø mm	210	210

Key features



- The new EOS series combines all functions of a solid industrial printer with highest ease of operation.

eos1 the compact for small work space.
For **label rolls up to 155 mm diameter**.

eos4 for **label rolls up to 210 mm diameter**.
All technical data identical with EOS1.

- Three USB interfaces connect a standard PC keyboard, scanner or USB memory stick.
- The big, clearly laid out touchscreen LCD display is easy to operate.
- In stand-alone mode the label data is entered via keyboard directly into the printer. A PC is not necessary any more.
- Due to the high-tech electronics, the intelligent printhead and efficient power supply the EOS is particularly energy efficient and environmentally friendly.
- The housing of the EOS devices are made of high-class ABS synthetic with translucent cover and are perfectly harmonized in their form and function.
- The cab label software cablabel R2+ optimally supports all printer functions.



EOS1 with cutter and external roll retainer for roll diameters up to 400 mm.

Details



Tear-off edge

Tear-off edge made out of steel sheet with sawtooth to ensure a perfect tear-off.



Cutter

The cutter is used to precisely cut all printable materials. An additional perforation and cutter, e.g. for heat shrink tubes, is available on demand.



Dispensing module

The liner is led out underneath the peel-off plate and can be torn off as required. The additionally built-in motor-drive for the liner ensures dispensing with highest reliability.

1 Touchscreen – LCD display

Clearly designed for highest ease of use.

2 Three USB interfaces

2 USB interfaces on the operation panel, 1 USB interface on the back side for memory stick, keyboard, scanner, WLAN or Bluetooth.

3 Roll holder

The label roll is inserted and centered automatically when closing the cover.

4 Ribbon retainer

The stop is adjustable to the ribbon width.

5 Gap or reflective label sensor

The sensor position is adjustable by the red knob via a spindle. The set position is displayed with a LED.

6 Label guide

The guides are adjusted to the material width with the green knob.


7 Printhead

The printhead can be easily removed by hand for cleaning or replacement.

8 Print roller

For cleaning or replacement the print roller can be removed without tools.

Technical data

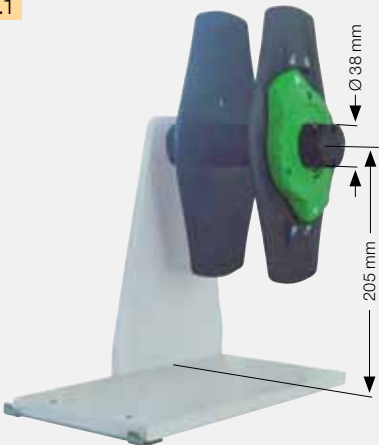









Printhead						
Printing method		Thermal transfer/Thermal direct				
Print resolution dpi		203 / 300				
Print width up to mm		108 / 105,7				
Print speed mm/s		30, 40, 50, 75, 100, 125				
Material ¹⁾ on rolls or fanfolded						
Labels	Paper, cardboard, textiles, plastics such as PET, PE, PP, PVC, PU, acrylate, PI	Thickness mm	Width mm	Height ²⁾ mm		
		0,055 - 0,7	single lane 10 - 116 multi lane 5 - 116	6 - 1000		
Continuous material	liner paper 60 - 110 g/m ²	0,055 - 0,10	25 - 120	endless		
	cardboard 80 - 180 g/m ²	0,10 - 0,20	6 - 120	10 - 1000		
	plastic film PVC	0,30	6 - 60			
		0,50	6 - 30			
flat pressed tubes		0,40 - 0,70	5 - 85			
Media roll		at core Ø mm	EOS1	EOS4		
Outside Ø mm		38 / 40	155	210		
		76	152,4	203,2		
Winding direction		outside or inside only outside during cutting				
Ribbon						
Ink		outside or inside				
Roll diameter up to mm		72				
Core diameter mm		25,4				
Ribbon length variable up to m		360				
Width mm		50 - 114				
Printer dimensions		EOS1	EOS4			
Height x Depth x Width mm		189 x 322 x 253	245 x 412 x 264			
Weight kg		4	5			
Label sensor						
Gap sensor		for leading edge of the label or punching marks and end of material				
Reflective sensor from the bottom		for black mark				
Distance from the center to the left mm		0 - 58				
Electronics						
Processor high speed 32 Bit clock rate MHz		400				
RAM MB		64				
Memory IFFS MB Flash		16				
Battery buffer for real-time clock with printout of time and date						
Data storage on shut-down						
Warning signal: acoustic signal in case of error						
Interfaces						
RS232C 1.200 up to 230.400 Baud/8Bit		Option				
USB 2.0 full speed device for PC connection						
Ethernet 10 / 100 Base T, LPD, RawIP-Printing, ftp-Printing, DHCP, HTTP, FTP, SMTP, SNMP, TIME, Zeroconf, mDNS, SOAP						
Peripheral connection						
WLAN USB Stick 54 Mbps		Option				
Nano Bluetooth USB Adapter V2.1		Option				
2 x USB Host on operation panel, connection up to 100 mA for memory stick, service key, WLAN or Bluetooth						
1 x USB Host on the backside connection up to 500 mA for keyboard, scanner, WLAN or Bluetooth						
Operation panel						
Touchscreen display 160 x 255 pixels with backlight						
Diagonal measurement mm		96				
Operating functions: Pause, Feed, Cancel, Menu, Enter, Numeric Pad						
Cutter						
Cutting length from mm		10				
Cuts/min. up to		200				
Winding		preferably outside				
Monitoring		cutter pivoted, final position not reached				
Label dispensing function only EOS4						
Label height mm		20 - 100				
Printing and dispensing		with push button on request automatically after removal of the label				
Monitoring		Label in dispensing position, dispensing module swivelled				
Operating data						
Power supply		100 – 240 V ~ 50 / 60 Hz				
Energy consumption		Power saving mode 1,8 W / typic 45 W / max. 100 W				
Temperature/ Humidity		Operation: + 5 - 40°C / 10 - 85% not condensing Storage: + 0 - 60°C / 20 - 80% not condensing Transport: – 25 - 60°C / 20 - 80% not condensing				
Approvals		CE, FCC class A, CB, CCC, UL				

Settings			
	Digital or analog clock System settings Print parameters 25 language settings	Time Date Interfaces Security	
On the Display			
	Data reception Ethernet state Temperature printhead	Clock Date sheet Ribbon capacity	Bluetooth Cutter WLAN
Monitoring			
Stop printing if	End of ribbon End of labels Printhead open Final position of cutter not reached cutter pivoted		
Test routines			
System diagnosis	when switched on incl. printhead testing		
Short status, status print	Font list, device list, WLAN status, profile of label, test grid, monitor mode, PPP status		
Status reports	Printout informing about settings and print length counter, runtime counter. Status request via software commands. Status messages on the display such as network error – no link, barcode error, etc.		
Fonts			
Font types	5 Bitmap fonts incl. OCR-A, OCR-B and 3 Vector fonts Swiss 721, Swiss 721 Bold and Monospace 821 available internally, loadable TrueType fonts. Thai and Chinese (simplified Chinese)		
Character sets	Windows 1250 up to 1257, DOS 437, 737, 775, 850, 852, 857, 862, 864, 866, 869, EBC DIC 500, ISO 8859-1 to -10 and -13 up to -16, WinOEM 720, UTF-8, Macintosh Roman, DEC MCS, K018-R. All West and East European Latin, Cyrillic, Greek, Hebrew and Arabic, Thai and Chinese characters are supported		
Bitmap fonts	Size of width and height 1 – 3 mm, Zoom 2 – 10 Orientation 0°, 90°, 180°, 270°		
Vector-/ TrueType fonts	Size of width and height 0.9 – 128 mm, variable zoom, orientation 360° in steps of 1°		
Font formats	Bold, italic, underlined, outline, negative, gray, vertical, depending on character fonts		
Font width	Variable		
Graphics			
Graphic elements	Line, arrow, box, circle, ellipse, filled and filled with fading		
Graphic formats	PCX, IMG, BMP, TIF, MAC, GIF, PNG		
Barcodes			
Linear barcodes	Code 39, Code 93 Code 39 Full ASCII Code 128 A, B, C Codabar EAN 8, 13 EAN/UCC 128 EAN/UPC Appendix 2	EAN/UPC Appendix 5 FIM HIBC Interleaved 2/5 Ident- and lead code of Deutsche Post AG	JAN 8, 13 MSI Plessey Postnet RSS 14 UPC A, E, E0
2D codes	Aztec, Codablock F, Data Matrix, PDF 417, Micro PDF 417, UPS Maxicode, QR-Code, RSS 14 truncated, limited, stacked and stacked omnidirectional, EAN-Datamatrix, GS1 Data Bar		
	All codes variable in height, module width and ratio. Orientation 0°, 90°, 180°, 270°. Optionally with check digit, printed characters and start/stop code, depending on code type.		
Software			
Programming	J-Script direct programming abc-Basic Compiler Database Connector		Standard Standard Option
System diagnosis/ administration	Printer monitoring with Intra- and Internet Network Manager		Standard Option
Label software	cablabel R2+ Direct programming with ZPL Codesoft, Nicelabel, Easylabel Bartender, Label Matrix, Labelview		Standard Standard Option Authorized distribution by resellers
Windows driver 32/64 bit certified for	Windows XP Windows Vista Windows 7 Windows 8	Server 2003 Server 2008 Server 2008 R2 Server 2012	Standard
Mac driver	OS X printer driver from version 10.6		Standard
Linux driver	CUPS-based from version 1.2		Standard
Stand-alone operation	Standard		

¹⁾ All material details are approximate values. Small labels, very thin, narrow, thick or stiff materials as well as labels with strong adhesives need to be tested.

²⁾ Please pay attention to the minimum label height when cutting and dispensing.

Accessories

Extras		Product	
2.1		External roll retainer EOS Roll diameter up to 400 mm, core diameter from 38 mm, winding outside or inside, roll weight max. 4 kg	
2.2		Print roller DR4-25 For small and thin materials up to a width of 25 mm.	As small labels may cause friction between printhead and print roller it is recommended to use in this case narrow print rollers with a width of 25, respectively 50 mm. .
		Print roller DR4-50 For very thin materials from a width of 20 up to 50 mm.	
2.3		Cutter EOS1 C Cutter EOS4 C Field installable	
2.4		Dispensing module EOS4 Field installable	
2.5		Standard keyboard USB Connection: USB, no. of keys: 115	
2.6	 USB Memory Stick	2.7  WLAN USB Stick 54 Mbps	2.8  Nano Bluetooth USB Adapter V2.1
Interfaces		Product	
3.1		Interface RS232C 9 / 9 pin, length 1,5 m	

Device functionality and compliance with CE standards are only warranted by using the accessories provided or recommended by cab.

Software tools

4.1

J
H 100
O R
S I1;0,0,68,70,100
T 10, 10,0,5,pt20;sample
B 10,20,0,EAN-13,SC2,401234512345
G 8,3,5,0;R:30,9,0,3;0,3

A 1

Job Start
Speed (100 mm / s)
Orientation rotated by 180°
Size of label (100x68 mm, gap 2 mm)
Text object/font: Swiss bold, 20 pt
Barcode EAN 13; size SC 2
Graphic, box 30 x 9 mm,
Line weight 0,3 mm
Number of labels (in this example 1)

4.2

SAP® Printer Vendor Program

Create labels
with
software

Transfer
replace file into
SAPScript

Exchange of
variable data
with SAPScript
and printout

Direct programming with J-Script

JScript is the programming language for cab printers.
The printer language is easy to understand and to program.
JScript is described in the programmer's guide and can be created with any text editor.

Replace files and integration in SAP R/3*

In cooperation with SAP cab developed the so-called „replace method“ to control cab printers quickly and easily from SAPScript using SAP R/3. The host computer only sends the JScript variable, respectively changed data to the printer. As a Silver Level partner in SAP's Printer Vendor Program, cab has access to the SAP development area for optimum printer support in SAP environments.

* SAP and R/3 are registered trademarks of SAP AG.

4.3

```

Datei Bearbeiten Format Ansicht ?
<ABC>
label start
input a$
if left$(a$,15)='194300301480070' then
  print "R t2;",mid$(a$,16)
endif
if left$(a$,15)='194300300580172' then
  print "R t3;",mid$(a$,16)
endif
if left$(a$,15)='194300301970073' then
  print "R t1;",mid$(a$,16)
endif
if a$='q0001' then
  print "A 1"
endif
goto start

```

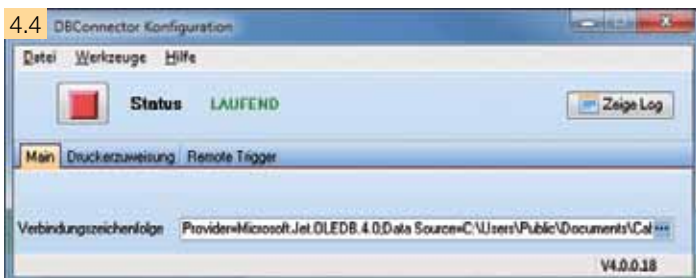
abc – Basic Compiler

As an integrated element of the firmware, the Basic Compiler enables the printer to process data via BASIC programming before it is sent for print editing. This makes it possible for external printer languages to be replaced or data from other systems, e.g. a PLC or balance to be transferred and printed. For example:

communication with balance



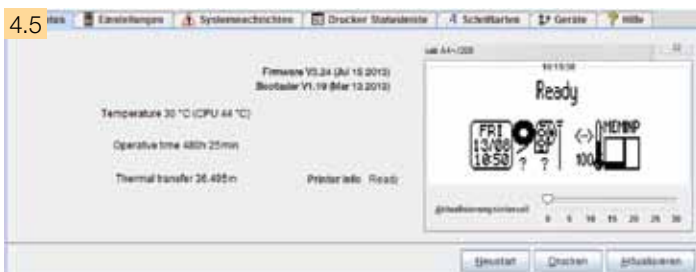
4.4



Database Connector

In the stand-alone mode with additional network connection, the Database Connector enables stand-alone printers to access data directly from a central ODBC-, OLEDB compatible database and to print it as a label. At the same time, data can also be written back to the database or changed during the printing process.

4.5

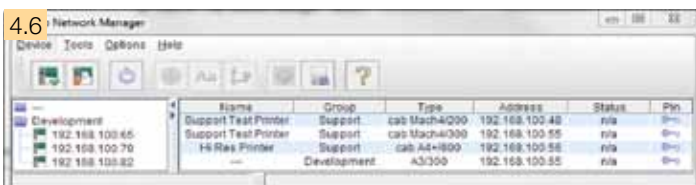


Printer monitoring with Intranet and Internet

Using standard programs such as the web browser or FTP clients, the integrated HTTP and FTP server enables print monitoring, configuration, firmware updates and memory card administration. Status, warning and error messages are sent to administrators or users as e-mails or SNMP datagrams via SNMP and SMTP clients.

A time server is used to synchronize time and date.

4.6



Administration Network Manager

The cab Network Manager enables the user to control a number of printers across a network simultaneously. It supports monitoring, configuration, firmware updates, memory card administration, file synchronization and PIN administration centrally.

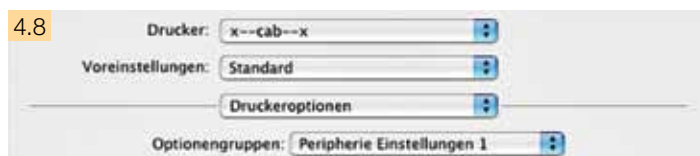
Printer drivers



WHQL certified Windows printer driver for

Windows XP	Windows Server 2003
Windows Vista	Windows Server 2008
Windows 7	Windows Server 2008 R2
Windows 8	Windows Server 2012

Our printer drivers are officially certified and signed by Microsoft. They ensure optimum stability on your Windows operating system.



Apple-Mac OS X® driver

Alternatively, cab offers a CUPS-based printer driver for programs using Mac OS X.



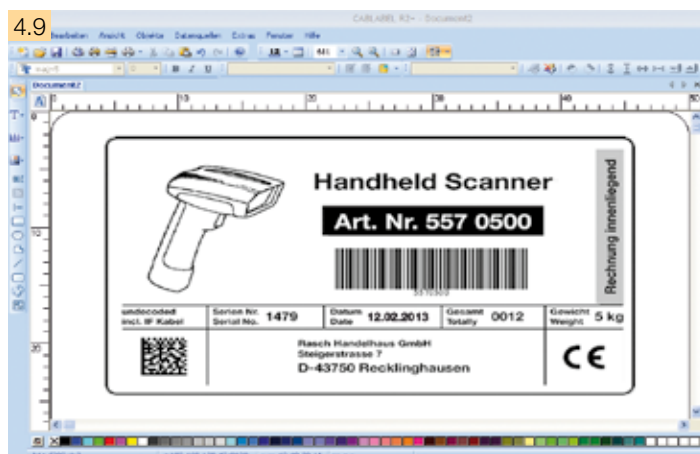
Linux driver

Alternatively, cab offers a CUPS-based printer driver for programs using Linux.

Microsoft® is a registered trademark of Microsoft Corporation.

Mac OS® is a registered trademark of Apple Computer, Inc.

Label software



cablabel R2+ is available in 24 different languages for the following operating systems:

Windows XP	Windows Server 2003*
Windows Vista	Windows Server 2008*
Windows 7	* Terminalserver / Citrix are not supported

4.10

Programmer's guide

Powerful label software that is free of charge and specially designed for cab printers and print and apply systems

Different fonts, barcode and graphics in variable heights, widths and printing directions can be used to produce the best possible label design.

High-performance functions enable to design and print even complex labels in just a few minutes. cablabel R2+ supports special functions of the cab printers, such as real-time clock, label counter, stand-alone operation (operation without connection to host or PC) or printout of the printer data stream in a file.

Additional label software

Highest possible variability – other commercially available label software solutions, such as Codesoft, NiceLabel, Easylab, Bartender, Label Matrix or Labelview support the cab label printers and labeling systems. More information available on our website.

A general programmer's guide explaining and describing commands for different printer models via direct programming.

Stand-alone operation



Printing without PC

Stand-alone operation is the ability to print labels even if the EOS printer is not connected to the host system.

The label layout is designed with a special label software or direct programming via PC.

Label formats, fonts, font-, text- and graphics data as well as data base contents are saved or read on the USB stick or internal data memory IFFS.

Only variable data to be printed is sent to the printer via keyboard or host. Additionally, data sent by a barcode scanner or scale can be processed.

Easy maintenance

Printhead 203 or 300 dpi

The printhead can be easily removed by hand for cleaning or replacement.



Print roller

For cleaning or replacement the print roller can be removed without tools.



Service








Our well-trained service engineers give world-wide support in maintenance and repair of cab printers. Please send your printer to one of cab's service centres or to one of the service partners selected by us. We will check and repair your printer within only a few working days. If requested, we will make a temporary equivalent device available for the time of repair.



Training

We offer training in programming, different software tools, printer drivers and label layout design. You will enhance your knowledge on cab printers to make more effective use of our printers. We also offer seminars for maintenance and repair.

Delivery program

	Part no.	Hardware	dpi
1.1	 5965101 5965102	EOS1 with tear-off plate Label printer EOS1 / 200 B Label printer EOS1 / 300 B	
	 5965103 5965104	EOS4 with tear-off plate Label printer EOS4 / 200 B Label printer EOS4 / 300 B	
1.2	 5965110 5965112	EOS1 with cutter Label printer EOS1 / 200 C Label printer EOS1 / 300 C	
	 5965106 5965107	EOS4 with cutter Label printer EOS4 / 200 C Label printer EOS4 / 300 C	
1.3	 5965108 5965109	EOS4 with dispensing function Label printer EOS4 / 200 P Label printer EOS4 / 300 P	
Scope of delivery			
DVD:		Label printer, Power cable type E+F, length 1.8 m, Connecting cable USB, length 1.8 m, Operating manual de/en Operating manual 22 languages, Configuration manual de/en/fr, Service manual / Spare parts de/en, Programming manual en, Windows printer driver 32/64 bit in 19 languages for Windows XP Server 2003 Windows Vista Server 2008 Windows 7 Server 2008 R2 Windows 8 Server 2012 Label software cablabel R2+ in 24 languages, Database Connector en, Mac OS X driver de/en/fr, Linux driver de/en/fr	
		Part no.	Spare parts
		5966096.001 5965580.001	Printhead 200 Printhead 300
		5965488.001	Print roller DR4-120

	Part no.	Accessories
2.1	 5965586	External roll retainer EOS
2.2	 5966218.001	Print roller DR4-25
	 5966219.001	Print roller DR4-50
2.3	 5965520 5966730	Cutter EOS1 C Cutter EOS4 C
2.4	 5965249	Dispensing module EOS4 P
2.5	 5901626	Standard keyboard USB German version
2.6	 5906179	USB Memory stick
2.7	 5906225	WLAN USB stick 54 Mbps
2.8	 5906226	Nano Bluetooth USB Adapter V2.1
		Part no.
3.1	 5965514	Interface RS232C
		Part no.
11.4	 DL 40100	Database Connector license
11.6	 5580215	Administration Network Manager
11.9	 included	Label software cablabel R2+
	on request	Codesoft, Nice Label, Easylabel
11.10	9008486	Programming manual English, as printed copy



For more informationen please refer to
www.cab.de/en/eos

cab delivery program

Label printer EOS1
The compact for
label rolls up to 155 mm Ø



Label printer EOS4
The cost-effective for
label rolls up to 210 mm Ø



Label printer MACH4
The versatile
for a smooth workflow



Label printer A+ series
The universal



Label printer A+ M
With centered material guide



Label printer XD4
Double-sided printing



Textile printer A4+T
For textile material



Label printer XD4T
Double-sided printing of
textile material



Label printer XC4
Two-color printing



Label printer XC6
Two-color printing



Label dispenser HS
Precise and easy dispensing in
horizontal direction
up to a width of 180 mm



Label dispenser VS
Precise and easy dispensing in
vertical direction
up to a width of 180 mm



Print & apply system Hermes+
For automation



Print module PX series
For integration into automatic
labeling systems



Labels / Transfer ribbons
Precise printing with cab's
labels and transfer ribbons



Label software
Standard and optional software



Laser marking system FL series
Precise and fast

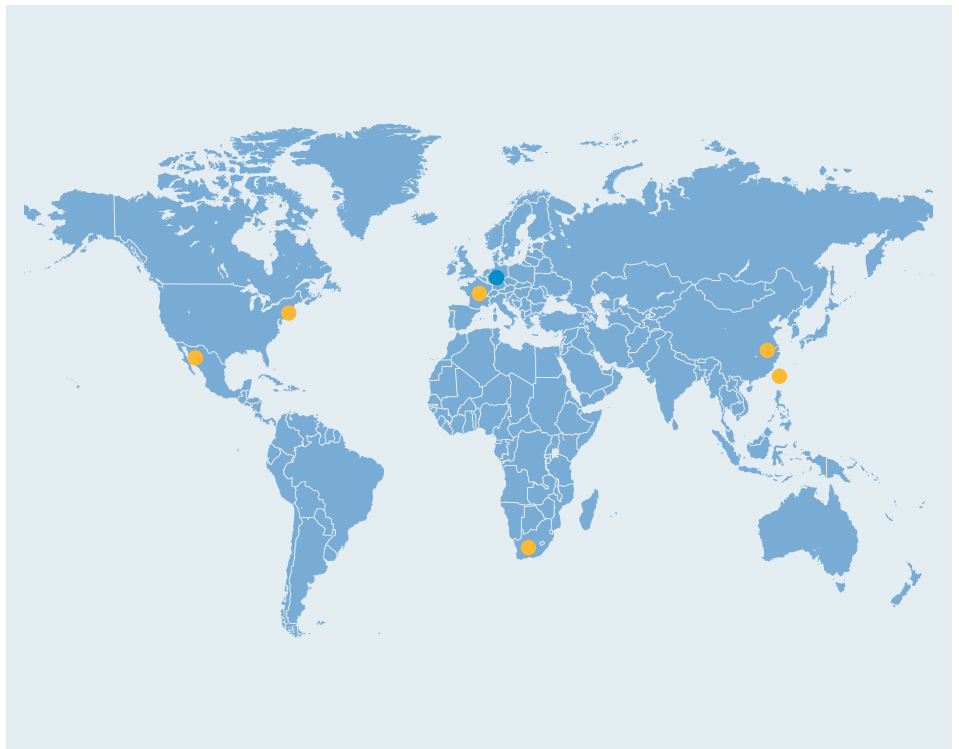


Laser safety housing
The industrial solution



- Headquarters in Germany
- cab offices
520 partners
in over 80 countries

cab maintains a presence in the world's major economic areas.



For current data, please refer to www.cab.de

Germany

cab Produkttechnik
GmbH & Co KG
Postfach 1904
76007 Karlsruhe
Wilhelm-Schickard-Str. 14
76131 Karlsruhe
Telefon +49 721 6626-0
Telefax +49 721 6626-249
www.cab.de
info@cab.de

Further partners
on request

France

cab technologies s.a.r.l.
67350 Niedermodern
Téléphone +33 388 722 501
www.cab.de/fr
info.fr@cab.de

USA

cab Technology Inc.
Tyngsboro MA, 01879
Phone +1 978 649 0293
www.cab.de/us
info.us@cab.de

South Africa

cab Technology (Pty.) Ltd.
2125 Randburg
Phone +27 11-886-3580
www.cab.de/za
info.za@cab.de

Asia 亚洲

cab Technology Co, Ltd.
希爱比科技股份有限公司
Junghe, Taipei, Taiwan
Phone +886 2 8227 3966
www.cab.de/tw
info.asia@cab.de

China 中国

cab (Shanghai) Trading Co., Ltd
铠博(上海)贸易有限公司
Phone +86 21 6236-3161
www.cab.de/cn
info.cn@cab.de

This documentation and any translations hereof are the property of cab GmbH & Co KG.

The replication, processing, reproduction or distribution in whole or in parts requires our prior written consent. © Copyright by cab/9009326.

All delivery, design and technical specifications are compiled to the best of our current knowledge and are subject to change without prior notice.