



A Message from the President

Congratulations on purchasing an Anchor Audio sound system, the choice of thousands of satisfied customers including the White House, prestigious universities, school districts nationwide, police and fire departments, and all branches of the U.S. military. Our products are made of the finest materials and built with pride in the U.S.

We've incorporated the latest technology into your sound system yet kept it simple to use. Just take a few minutes to review this manual to ensure the maximum enjoyment of your Anchor system. Or, you can view a demonstration video complete with a trouble shooting section at [www.anchoraudio.com](http://www.anchoraudio.com).

Feel free to call our friendly customer support staff at 1-800-ANCHOR1 Monday thru Friday between 7:00am and 5:00pm Pacific Standard Time with any questions. We love to hear from our customers.

Janet Jacobs – President  
on behalf of all Anchor Employees

CONTENTS

GETTING STARTED / WARRANTY INFORMATION.....1

BASIC SYSTEM OPERATION / SPEAKER STAND SETUP ..... 2

CONNECTING SOUND SYSTEM / CONTROLLING FEEDBACK ..... 3

OPERATING THE BUILT-IN UHF WIRELESS RECEIVER / CERTIFICATION ..... 4

OPERATING THE WIRELESS MICROPHONE / TRANSMITTER .....5

CARING FOR YOUR BATTERY ..... 6

HAVING TROUBLE WITH YOUR SOUND SYSTEM? / TECHNICAL SPECIFICATIONS ..... 8

GETTING STARTED

Please check your new unit carefully for any damage which may have occurred during shipment. Each Anchor product is carefully inspected at the factory and packed in specially designed boxes for safe transport. Notify the freight carrier immediately of any damage to the shipping box or product. Repack the unit in the original box and wait for inspection by the carrier's claim agent. Notify your dealer of the pending freight claim.

NOTE: All damage claims must be made with freight carrier!

RETURNING SYSTEMS FOR SERVICE OR REPAIR

For service or repair, please contact the dealer you purchased your system from or Anchor Audio Customer Service at 800.262.4671 to obtain a RA (Return Authorization) number. You may also complete an online RA request form at [www.anchoraudio.com](http://www.anchoraudio.com). All shipments to Anchor Audio must include a RA number and must be shipped prepaid. C.O.D. shipments will be refused and returned at your expense.

IMPORTANT: Save the shipping box & packing materials, they were specially designed to ship your unit!

100-0172-000/A - 11/10



SIX YEAR WARRANTY

## BASIC SYSTEM OPERATION

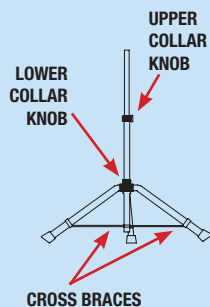
**NOTE: Fully Charge Batteries Before First Use!**

1. Set all Input Level Controls to minimum & Tones Controls to flat or the middle setting before turning your system on
2. Plug a wired microphone into the MIC 1 or MIC 2 jacks and/or plug an audio source into the LINE-IN jack
3. Switch POWER to ON, the BATTERY LED will light
4. Slowly increase the Level Control for the input jacks used to the desired volume
5. Adjust BASS & TREBLE controls to desired sound quality

**IMPORTANT:** Make all connections with shielded cables to avoid hum, buzzing or interference.

### SPEAKER STAND SETUP

1. Loosen the Lower Collar Knob
2. Separate the stand legs until the leg support Cross Braces are parallel to the floor
3. Tighten the Lower Collar Knob
4. Loosen the Upper Collar Knob and extend the center pole
5. Adjust height and retighten the Upper Collar Knob
6. Place your Anchor sound system on the stand



### SPEAKER STAND ADAPTER

The 1.5" diameter Speaker Stand Adapter lets you mount the Go Getter on a speaker stand.

1. Slide Speaker Stand Adapter into slot on Go Getter bottom
2. Tighten screw to secure adapter
3. Place unit on stand carefully
4. Tighten screw on Adapter collar securing Explore PRO on stand

### RX INDICATOR LIGHTS FOR WIRELESS RECEIVER 1

A solid red light on one of the RX Indicator Lights indicates that the sound system is getting good reception with the wireless microphone

A solid red light on both RX Indicator Lights indicates that the sound system is at optimum reception with the wireless microphone

### WIRELESS MICROPHONE 1 LEVEL CONTROL

Adjust knob to control wireless microphone levels

### WIRELESS MICROPHONE 2 LEVEL CONTROL

### LINE IN LEVEL CONTROL

### LINE IN - INPUT JACKS

The 1/8" (3.5 mm) jack input is used to hook up an iPod, a portable CD/ MP3/ tape player, laptop computer, or similar external audio source

The 1/4" unbalanced input can be used for other communication devices including a mixer or daisy chaining together multiple Go Getter speakers

## BACK PANEL OF GG-U2 (AC/DC)

WIRELESS RECEIVERS 4  
(see page 6)

### RX INDICATOR LIGHTS FOR WIRELESS RECEIVER 2

TO NE CONTROLS - BASS/TREBLE

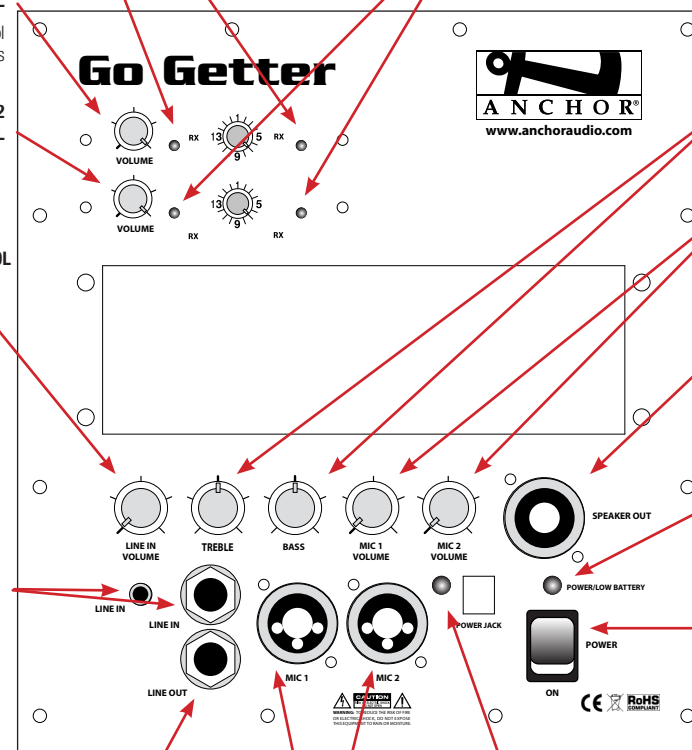
WIRED MIC LEVEL CONTROLS

SPEAKER OUT - OUTPUT JACK

Connect the system to a Go Getter unpowered companion speaker

BATTERY LEVEL INDICATOR LIGHT

POWER SWITCH



### LINE OUT - OUTPUT JACK

Balanced 1/4" - provides a combined output of all active system inputs

Record your presentation or connect to another powered sound system

### WIRED MIC INPUTS

CHARGE INDICATOR LIGHT



SIX YEAR WARRANTY

## CONNECTING TWO OR MORE GO GETTER SOUND SYSTEMS

### USING A Go Getter UNPOWERED COMPANION SPEAKER (GG-01)

Connect one end of a speaker cable (SC-50NL) to the SPEAKER OUT jack on the back of a powered Go Getter sound system. Connect the other end to the jack labeled IN on the back of a Go Getter unpowered companion speaker.

**NOTE:** AC power is not required for an unpowered companion speaker.

### USING 2 POWERED Go Getter SOUND SYSTEMS

This method uses the line-output feature of your Go Getter sound system. Connect a speaker cable (1/4" phone) from the LINE OUT jack on the first powered Go Getter to the LINE IN jack on the second powered Go Getter. Set the volume of the second Go Getter to maximum so that full volume control will be at the first or primary sound system.

**NOTE:** The line-output feature can also be used to send the signal to a sound system in a different room or a separate recording device.

## SETTING UP YOUR GO GETTER SOUND SYSTEM

We recommend placing your sound system between the audience and the presenter, facing the audience and raised above their heads using a speaker stand or table. This benefits listeners in the rear of the crowd, minimizes the risk of overpowering those in the front and helps prevent feedback by keeping microphone users behind the sound system.

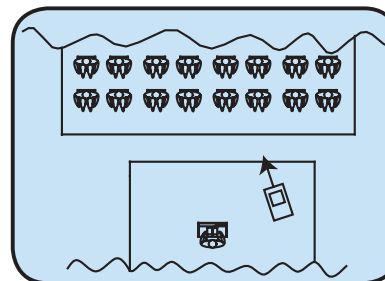
### SINGLE SYSTEM PLACEMENT

Place your unit along the least trafficked aisle pointing towards the center of the audience.

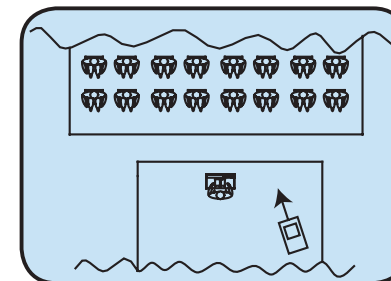
### MULTIPLE SYSTEM PLACEMENT

Place units along aisles pointing just off the audience center line, over the crowd's head. With the sound system placed properly it should provide sufficient coverage.

### CORRECT SYSTEM PLACEMENT



### WRONG SYSTEM PLACEMENT



## CONTROLLING FEEDBACK

Feedback, a howling noise or shrill sound, is self-generated by the sound system. It's caused by a microphone picking up the sound coming from the speaker and then re-amplifying it. Once a feedback loop starts it continues until the system is adjusted.

### FEEDBACK CAUSES

- Microphone too close, pointing towards or in front of speaker
- Volume setting is too loud for room
- Sound reflecting off hard surfaces

### AVOIDING & ELIMINATING FEEDBACK

- Point microphone in a different direction
- Keep microphone away from the speaker
- Place speaker in FRONT of the microphone
- Reduce the sound system volume levels

**CAUTION:** Feedback can damage your equipment & may be hazardous to hearing.



SIX YEAR WARRANTY

## DIVERSITY WIRELESS BY ANCHOR AUDIO

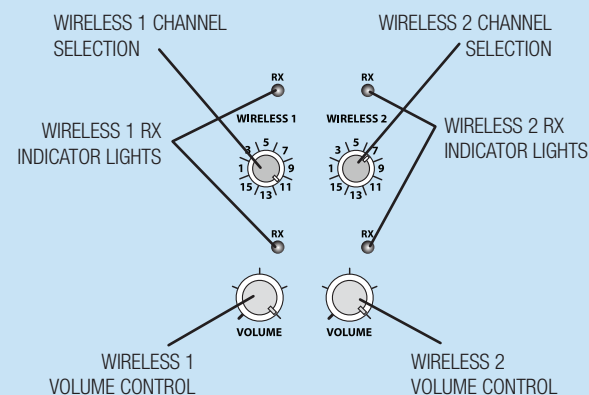
Anchor Audio UHF wireless is a 16 channel, diversity wireless system that receives signals with two independent antennae. With diversity wireless the receiver processes the stronger signal, effectively minimizing dropouts and interference from other transmitting sources. The antennae are mounted internally so there are no obstructions or risk of damage.

### CHANNEL SELECTION - BUILT-IN RECEIVER

Select a channel, set the built-in receiver & microphone transmitter to that channel before using your wireless system.

1. Choose any available wireless channel/frequency from 1 thru 16  
(see page 5 for transmitter instructions)
2. Set the Wireless Channel Selector Knob to the channel/frequency you choose in step 1

If you have two wireless receivers repeat above for the second receiver. Remember, each receiver/transmitter pair must be set to different channels to avoid interference.



**NOTE:** Ongoing wireless interference? The frequency you selected may be in use by other systems in the area!  
Change channels until you find a clear frequency!

### CERTIFICATION

This system conforms to part 74 and part 15 of the FCC rules, contact the FCC office for filling forms.

**Frequency Range: 682 MHz - 698 MHz**

WH-6000EU and WB-6000EU transmitters meet the essential requirements of the European R&TTE Directive 99/5/EC and are eligible to carry the CE marking. CE 0336 !

**European Frequency Range: 863.125 MHz - 864.875 MHz**

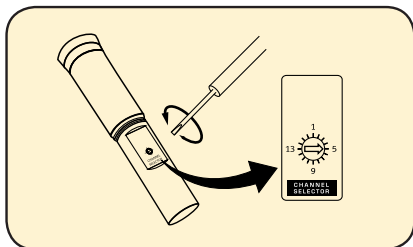


SIX YEAR WARRANTY

## OPERATING THE WIRELESS MICROPHONE/TRANSMITTER

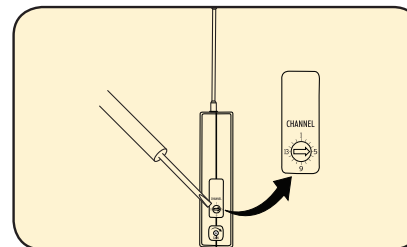
### CHANNEL SELECTION - HANDHELD TRANSMITTER

1. Unscrew battery cover on bottom of microphone
2. Set the CHANNEL SELECTOR dial to match the channel setting of your receiver
3. Replace battery cover and tighten firmly



### CHANNEL SELECTION - BODY-PACK TRANSMITTER

1. The channel selection dial is located on the side of the transmitter
2. Set the CHANNEL selection dial to match the channel setting of the receiver



**NOTE:** When using dual wireless, each microphone must be set to a different channel!

### USING YOUR WIRELESS MICROPHONES

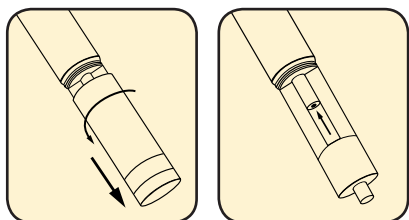
After you have set the transmitter channel (see above) you are ready to use your wireless microphone:

1. Body-pack transmitter users must insert the mic plug into the transmitter jack marked MIC
2. Push the transmitter power button for two seconds until ON (The red LED will stay on when the mic is turned on. If the red LED flashes, the battery is low)
3. Turn the Go Getter power switch to ON
4. The RX indicators will light (*only one indicator will light at a time*) when the wireless signal is being transmitted and received

**CAUTION:** Harmful feedback may occur when walking in front of a sound system or speaker with a wireless microphone. Always point microphone away from speakers!

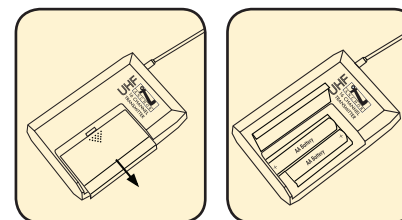
### REPLACE BATTERY - HANDHELD TRANSMITTER

1. Unscrew battery cover on bottom of microphone
2. Replace old batteries with two fresh size 'AA' alkaline batteries
3. Replace battery cover and tighten firmly



### REPLACE BATTERY - BODY-PACK TRANSMITTER

1. Slide open battery cover on front of transmitter
2. Replace old batteries with two fresh size 'AA' alkaline batteries
3. Replace battery cover by sliding firmly into place



**NOTE:** Transmitter power must be OFF when changing batteries!

For System Setup & Operation Videos Visit Our Website: [www.anchoraudio.com](http://www.anchoraudio.com)



SIX YEAR WARRANTY

## CARING FOR YOUR BUILT-IN BATTERY

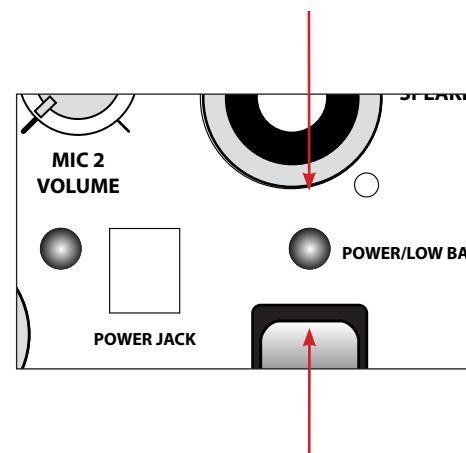
An automatic charging system is built-in to your Go Getter Sound System. It is designed to properly charge and maintain the systems built-in battery.

## CHARGING THE BATTERY

1. The Battery Level Indicator Light will dim and eventually turn off when battery is low
2. To charge the battery, plug the AC power cord into the Go Getter
3. Plug the other end of the cord into AC outlet
4. The Charge Indicator Light will show solid red light when charging and turn off when charging is complete

To preserve the life of your battery it is recommended that it be fully charged as soon as possible after every use regardless of the length of operation. It takes approximately 8 hours to charge the Go Getter battery

**NOTE:** System Can Be Used While Battery Charges!



**BATTERY EMPTY LED**  
GREEN LED

**IMPORTANT:** Always Store Your System with Battery Fully Charged!

Waste electrical and electronic products must not be disposed of with household waste. Please recycle where facilities exist. Check with your Local Authority or Retailer for recycling advice.







SIX YEAR WARRANTY

## Important Safety Instructions

- 1) Read Instructions – All the safety and operation instructions should be read before the product is operated.
- 2) Retain Instructions – The safety and operating instructions should be retained for future reference.
- 3) Heed Warnings- All warnings on the product and in the operating instructions should be adhered to.
- 4) Follow Instructions – All operating and use instructions should be followed.
- 5) Cleaning – Unplug this product from the wall outlet before cleaning. Do not use liquid cleaners or aerosol cleaners. Use a damp cloth for cleaning.  
Exception: A product that is meant for uninterrupted service and that for some specific reason, such as the possibility of the loss of an authorization code for the CATV converter, is not intended to be unplugged by the user for cleaning or any other purpose, may exclude the reference to unplugging the product in the cleaning description otherwise in above 5).
- 6) Attachments – Do not use attachments not recommended by the product manufacturer as they may cause hazards.
- 7) Water and Moisture – Do not use this product near water – for example, near a bath tub, wash bowl, kitchen sink, or laundry tub; in a wet basement; or near a swimming pool; and the like.
- 8) Accessories – Do not place this product on an unstable cart, stand, tripod, bracket, or table. The product may fall, causing serious injury to a child or adult, and serious damage to the product. Use only with a cart, stand, tripod, bracket, or table recommended by the manufacturer, or sold with the product. Any mounting of the product should follow the manufacturer's instructions, and should use a mounting accessory recommended by the manufacturer.
- 9) A product and cart combination should be moved with care. Quick stop, excessive force, and uneven surfaces may cause the product and cart combination to overturn.
- 10) Ventilation – Slots and openings in the cabinet are provided for ventilation and to ensure reliable operation of the product and to protect it from overheating, and these openings must not be blocked or covered. The openings should never be blocked by placing the product on a bed, sofa, rug, or other similar surface. This product should not be placed in a build-in installation such as a bookcase or rack unless proper ventilation is provided or the manufacturer's instructions have been adhered to.
- 11) Power Sources – This product should be operated only from the type of power source indicated on the marking label. If you are not sure of the type of power supply to your home, consult your product dealer or local power company. For products intended to operate from battery power, or other sources, refer to the operating instructions.
- 12) Grounding or Polarization – This product may be equipped with a polarized alternating-current line plug (a plug having one blade wider than the other). This plug will fit into the power outlet only one way. This is a safety feature. If you are unable to insert the plug fully into the outlet, try reversing the plug. If the plug should still fail to fit, contact your electrician to replace your obsolete outlet. Do not defeat the safety purpose of the polarized plug.
- 13) Power-Cord Protection – Power-supply cords should be routed so that they are not likely to be walked on or pinched by items placed upon or against them, paying particular attention to cords at plugs, convenience receptacles, and the point where they exit from the product.
- 14) Protective Attachment Plug – The product is equipped with an attachment plug having overload protection. This is a safety feature. See Instruction Manual for replacement or resetting of protective device. If replacement of the plug is required, be sure the service technician has used a replacement plug specified by the manufacturer that has the same overload protection as the original plug.
- 15) Outdoor Antenna Grounding – If an outside antenna or cable system is connected to the product, be sure the antenna or cable system is grounded so as to provide some protection against voltage surges and built-up static charges. Article 810 of the National Electrical Code, ANSI/NFPA 70, provides information with regard to proper grounding of the mast and supporting structure grounding of the lead in wire to an antenna discharge unit, size of grounding conductors, location of antenna-discharge unit, connection of grounding electrodes, and requirements for the grounding electrode. See Figure A.
- 16) Lightning – For added protection this product during lightning storm, or when it is left unattended and unused for long periods of time, unplug it from the wall outlet and disconnect the antenna or cable system. This will prevent damage to the product due to lightning and power-line surges.
- 17) Power Lines – An outside antenna system should not be located in the vicinity of overhead power lines or other electric light or power circuits, or where it can fall into such power lines or circuits. When installing an outside antenna system, extreme care should be taken to keep from touching such power lines or circuits as contact with them might be fatal.
- 18) Overloading – Do not overload wall outlets, extension cords, or integral convenience receptacles as this can result in a risk of fire or electric shock.
- 19) Object and Liquid Entry – Never push objects of any kind into this product through openings as they may touch dangerous voltage points or short-out parts that could result in a fire or electric shock. Never spill liquid of any kind on the product.
- 20) Servicing – Do not attempt to service this product yourself as opening or removing covers may expose you to dangerous voltage or other hazards. Refer all servicing to qualified service personnel.
- 21) Damage Requiring Service – Unplug this product from the wall outlet and refer servicing to qualified service personnel under the following conditions:
  - a. When the power-supply cord or plug is damaged.
  - b. If liquid has been spilled, or objects have fallen into the product.
  - c. If the product has been exposed to rain or water.
  - d. If the product does not operate normally by following the operating instructions. Adjust only those controls that are covered by the operating instructions as an improper adjustment of other controls may result in damage and will often require extensive work by a qualified technician to restore the product to its normal operation.
  - e. If the product has been dropped or damaged in any way.
  - f. When the product exhibits a distinct change in performance – this indicates a need for service.
- 22) Replacement Parts – When replacement parts are required, be sure the service technician has used replacement parts specified by the manufacturer or have the same characteristics as the original part. Unauthorized substitutions may result in fire, electric shock, or other hazards.
- 23) Safety Check – Upon completion of any service or repairs to this product, ask the service technician to perform safety checks to determine that the product is in proper operation condition.
- 24) Wall or Ceiling Mounting – The product should be mounted to a wall or ceiling only as recommended by the manufacturer.
- 25) Heat – The product should be situated away from heat sources such as radiators, heat registers, stoves, or other products (including amplifiers) that produce heat.



SIX YEAR WARRANTY

## HAVING TROUBLE WITH YOUR SOUND SYSTEM?

CONDITION	POSSIBLE SOLUTION
No Sound ( <i>power LED off</i> )	<ul style="list-style-type: none"> <li>• turn POWER switch ON</li> <li>• charge battery or plug in AC cord</li> </ul>
No Sound ( <i>power LED on</i> )	<ul style="list-style-type: none"> <li>• check for output from source</li> <li>• make sure all cables are completely plugged in</li> <li>• turn up volume control of input used</li> <li>• remove plug from speaker output if not using external speaker output</li> </ul>
Shortened Battery Life	<ul style="list-style-type: none"> <li>• charge battery fully; if battery life continues to deteriorate, contact Anchor Audio customer service: 800.262.4671</li> </ul>
Distorted Sound	<ul style="list-style-type: none"> <li>• lower system volume control</li> </ul>
Excessive Hum or Noise	<ul style="list-style-type: none"> <li>• use shielded cables</li> <li>• use balanced microphone</li> </ul>

## HAVING TROUBLE WITH YOUR WIRELESS SYSTEM? (WIRELESS MODELS ONLY)

CONDITION	POSSIBLE SOLUTION
No Sound ( <i>RX Indicator: ON</i> )	<ul style="list-style-type: none"> <li>• set MUTE switch to on (<i>handheld mic only</i>)</li> <li>• turn up WIRELESS volume control</li> <li>• make sure mic is plugged into body pack transmitter</li> </ul>
No Sound ( <i>RX Indicator: OFF</i> )	<ul style="list-style-type: none"> <li>• push mic power button</li> <li>• turn Go Getter POWER switch on</li> <li>• make sure transmitter power switch is on</li> <li>• set receiver and transmitter to same channel</li> <li>• replace battery in transmitter</li> </ul>

NEED MORE HELP? View demonstration videos on proper system setup and operation at our website - [www.anchoraudio.com](http://www.anchoraudio.com)

## GO GETTER TECHNICAL SPECIFICATIONS

Rated Power Output	75 watts AC / DC mode	Auxiliary	Hi-Z (10 k $\Omega$ ), unbal, 1/8" & 1/4"
Max SPL @ Rated Power	109 dB @ 1 meter	<b>Sensitivity For Rated Output</b>	
Frequency Response	60 Hz – 16 kHz	Line	-8.4 dBV (380 mVrms)
AC Power Reqs.	90 – 264 VAC, 50/60 Hz	Mic ( <i>unbal &amp; bal</i> )	-49 dBV (3.63 mVrms)
Dimensions ( <i>HWD</i> )	18" x 11" x 9" (46 x 28 x 23 cm)	<b>Outputs</b>	
Weight (AC/DC)	23 lbs / 10.4 Kg	Line ( <i>post fader</i> )	Lo-Z, buffered, 1/4" balanced
Weight (AC only)	16 lbs/ 7.25 Kg	Speaker	4-pole Neutrik Speakon® jack
<b>Inputs</b>			
Microphone	Lo-Z (1 k $\Omega$ ), balanced, XLR		
(2 <i>combo jacks</i> )	12 VDC condenser mic phantom		
pwr			
	Hi-Z (10 K $\Omega$ ), unbal, 1/4" phone		



(Specifications Subject to Change Without Notice)

**ANCHOR AUDIO CUSTOMER SERVICE**  
**800.262.4671**

**FOR ADDITIONAL INFORMATION**  
**visit [www.anchoraudio.com](http://www.anchoraudio.com)**