

For more information about how to use the phone, please go to www.alcatelone-touch.com to download complete user manual. Also on our website you can find helpful FAQs, software upgrade, etc.



Table of contents
1 Your mobile.....3
2 Getting started.....8
3 Making a call.....9
4 Messaging.....10
5 Contacts.....12
6 Call log.....12
7 Media.....13
8 Files.....14
9 MetroWEB.....15
10 Applications.....16
11 Tools.....17
12 Settings.....18
13 Making the most of your mobile.....19



This product meets applicable national SAR limits of 1.6W/kg. The specific maximum SAR values can be found in the RADIO WAVES section of this user guide.

www.sar-tick.com

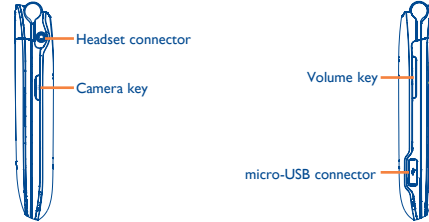
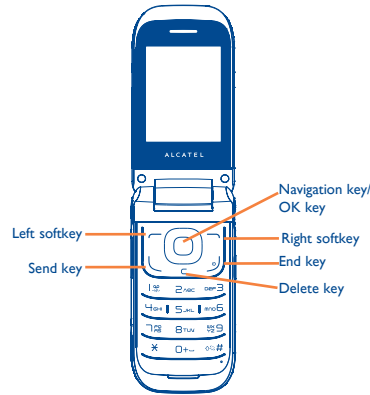


PROTECT YOUR HEARING

To prevent possible hearing damage, do not listen at high volume levels for long periods. Exercise caution when holding your device near your ear while the loudspeaker is in use.

Your mobile.....

1.1 Keys and connectors



- Navigation key (1) Press to go left/right/up/down Press to access function UP: Call log DOWN: Contacts LEFT (2): Write message RIGHT (3): Camera

- OK key Press to confirm an option
Answer/Send a call
Enter Call log
Press: End a call Return to the Home screen
Press and hold: Power on/off
Press: Delete characters in Edit mode

- Press: Dial "#" Press and hold: Vibrate alert
In Edit mode Press: Switch between ABC/Abc/abc Press and hold: Switch between Multi-Tap/Smart
Press: Dial "1" Press and hold: Access your voicemail
In Edit mode Press: Input "1" Input frequently-used symbols

- Press: Dial "m"
In Edit mode Press: change input method Press and hold: Access the Symbols table
Press: Dial "0" Press and hold: Switch between "+/PW"
In Edit mode Press: Enter a space Press and hold: Input "0"

(1) You can personalize navigation key in Settings.
(2) The shortcut to access function for LEFT/RIGHT only be available when shortcut bar is off.

- Press: Take a picture
Press and hold: Access Camera

- Press: Volume up/down
In Camera mode Press: Zoom in/out
In music playing mode Press and hold: Previous/Next song
In Radio mode Press and hold: Previous/Next channel
In Calendar mode Press: Previous/Next month
Incoming call (Clamshell close) Press: Mute Press and hold: End
Alarm beep (Clamshell close) Press: Snooze Press and hold: Stop

1.2 Status bar icons (1)

- Battery charge level
Vibrate alert: your phone vibrates, but does not ring or beep with the exception of the alarm
Bluetooth status (Activated)
Bluetooth status (Connected to an audio device)

(1) The icons and illustrations in this guide are provided for informational purposes only.

4 Messaging.....

4.1 Access

You may access this menu using the following options:

- Access from the main menu by selecting "Messaging".
Select from shortcut bar, and then enter the sub-menu you require.

When you access "Messaging", you can switch between SMS/MMS and Email by navigation key.

4.2 Conversational On (Off) mode

In conversational on mode, you can view chat history in chronological order. In conversational off mode, you may have access to the following folders: Inbox, Outbox, Sent, Drafts, Voicemail, Broadcast SMS, Empty folder, Archive, Templates, Emergency alerts and Settings. Conversational view mode is set as default. You may switch to conventional mode by selecting "Settings|Switch view mode". The following instructions are based on conversational mode.

4.3 Write message

You can select "Messaging|New message" from the main menu or access from shortcut to write text/multimedia message. One or more recipients can be added from contact list and you can remove a recipient by pressing the Delete key. Press the key and select "More" to multi-choice recipients from Contacts.

An SMS will be converted to MMS automatically when images, videos, audio, slides or attachments are inserted; Subject, CC/BCC/email address is added; or the message contains more than 8 pages of text.



An SMS message of more than a certain number of characters (the number of characters depends on your language) will be charged as several SMS. An MMS message containing photos and/or sounds may also be billed as more than one message. Specific letters (accent) will increase the size of the SMS, this may cause multiple SMS to be sent to your recipient.

4.4 Email

Your phone has an email client with the settings pre-defined for a few popular email services like - Gmail, Yahoo, AOL, etc. Besides this, you can set up other POP3 or IMAP4 email accounts that you may be using.

5 Contacts.....

5.1 Accessing your contacts

You can access this function by selecting "Contacts" from the main menu.

5.2 Adding a contact

You can add a new contact to phone or SIM card by selecting "Add new contact".

6 Call log.....

6.1 Access

You can access the function using the following options:

- Select from main menu
Press key from Home screen
Select from shortcut bar, and then enter the sub-menu you require.

6.2 Available options

When you press "Options", you can have access to Send message, Call, Missed calls, Edit before call, Delete, etc.

7 Media.....

7.1 Camera

Your mobile phone is fitted with a camera for taking photos and shooting videos.

7.2 Music player

You can access this feature from the main menu by selecting "Media|Music player". You will have full flexibility of managing music both on your mobile and microSD™ card.

7.3 Picture viewer

A library links to the pictures both shown in list, slide, sent, set as wallpaper, by MMS, Email, and Bluetooth®.

7.4 Video player

Contains all video clips both in phone and microSD card and enables you to play, send, delete, rename, sort, etc.

7.5 FM Radio

Your phone is equipped with a radio (1) with RDS (2) functionality. You can use the application as a traditional radio with saved channels or with parallel visual information related to the radio program on the display if you tune to stations that offer Visual Radio service. You can listen to it while running other applications.

(1) The quality of the radio depends on the coverage of the radio station in that particular area.
(2) Depending on your network operator and market.

7.6 Voice recorder

Accessing this feature from the main menu by selecting "Media|Voice recorder", allows you to make voice or sound recordings.

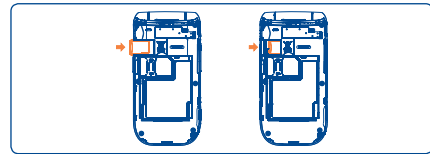
7.7 Ebook

A bookshelf contains the electronic books (.txt file only). While reading the book, you may add bookmark, or reach the text by searching words, phrases (Options|Find, Options|Jump to).

8 Files.....

You will have access to all audio and visual files stored in phone or microSD card in File manager.

Inserting the microSD card:



Insert the microSD card with golden contact facing downwards into the slot until it is locked. Gently push the memory card until it is unlocked.

- Java status (Activated)
Headset connected
Call forwarding activated: your calls are forwarded
Alarm or appointments programmed
Level of network reception
Voicemail message arrived
Missed calls
Call in progress
Stopwatch is active
Radio is on
Email unread
WAP messages
Roaming
microSD card scanning completed
GPRS connecting
GPRS attached
EDGE connecting
EDGE attached

- 3G network connecting
3G network attached
Music active
MMS receipt in progress
Silence mode: your phone does not ring, beep or vibrate with the exception of the alarm
Message unread
(Red) Message list is full: your phone cannot accept any new messages. You must access the message list and delete at least one message on your SIM card
Airplane mode

1.3 Home screen

1.3.1 Shortcut bar

Shortcuts are home screen icons for your frequently used items, like Calls or Messages.

You can customize shortcut bar by selecting "Settings|Phone settings|Shortcut bar".

2 Getting started.....

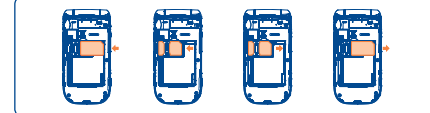
2.1 Set-up

Removing or installing the back cover



Inserting or removing the SIM card

You must insert your SIM card to make phone calls. Please power off your phone and remove battery before inserting or removing the SIM card.



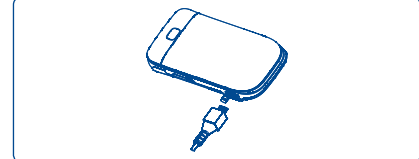
Place the SIM card with the chip facing downwards and slide it into its housing. Make sure that it is correctly inserted. To remove the card, press and slide it out.

Installing or removing the battery



Insert and click the battery into place, then close the telephone cover. Unclip the cover, then remove the battery.

Charging the battery



Connect the battery charger to your phone and outlet respectively.

To reduce power consumption and energy waste, when battery is fully charged, disconnect your charger from the plug; switch off Bluetooth and background-running applications when not in use; reduce the backlight time, etc.

2.2 Power on your phone

Hold down the key until the telephone powers on.

2.3 Power off your phone

Hold down the key from the Home screen.

3 Making a call.....

Dial the desired number then press the key to place the call. The number you entered can be saved to Contacts by selecting "Save". If you make a mistake, you may press key to delete the incorrect digits one by one, or you may press and hold key to delete all.

To hang up the call, press the key.

11.7 World clock

The World clock shows current local time and the time zone in different cities. You may view up to 3 cities.

11.8 Stopwatch

The stopwatch is a simple application for measuring time with the possibility to register several results and suspend/resume measurement.

11.9 Unit converter

You can use the Weight and Length conversion by selecting the unit you wish to convert, then press to input the digits. Finally confirm with "OK".

12 Settings.....

From the main menu, select the menu icon and select the function of your choice in order to customize your telephone: Profiles, Phone settings, Call settings, Airplane mode, Security settings, Networks, etc.

