



SPK-9100

900MHz Wireless Stereo

Headphones



User Manual

www.audio-unlimited.com

www.cablesunlimited.com

INTRODUCTION

Thank you for purchasing our 900Mhz compact cordless stereo headphone system that takes advantage of the very latest advances in wireless transmission technology so you can listen to music or the sound from your TV both in the house and outdoors. Just connect the transmitter to any audio source- DVD, CD, MP3, Blu-ray, PC, TV, VCR, stereo system or radio (range 165 feet*).

* Actual range depends on ambient, local conditions.

FEATURES

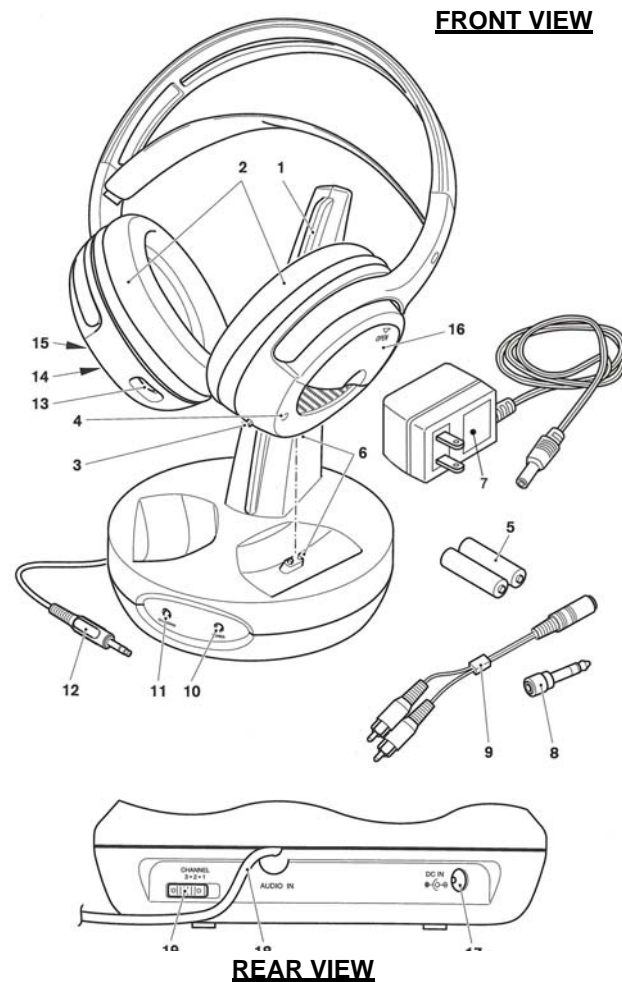
1. Automatic Phase Lock Loop (PLL) scanning system on headphone
2. (PLL) Transmission system on transmitter
3. Automatic battery recharging ability built into the transmitter (batteries supplied)
4. 900 MHz RF technology allows freedom of movement
5. Transmission is not restricted solely to line of sight
6. Rechargeable receiver headphones (batteries included)
7. High-quality stereo sound is virtually interference-free
8. Automatic Level Control (ALC) and Auto On/Off function

IMPORTANT SAFETY INFORMATION

1. Read and understand all instructions.
2. Follow all warnings and instructions.
3. Before placing headphones on head, ensure that the volume is at a comfortable level.
4. Reduce the volume or discontinue use if you experience a ringing in your ears.
5. Do not use liquid or aerosol cleaners. Use a damp cloth for cleaning. If necessary, use a mild soap.

6. Do not use this product near water, for example, near a bathtub or laundry tub, in a wet basement, or near a swimming pool.
7. Do not place this product on an unstable cart, stand or table. The product may fall, causing serious damage.
8. Do not allow anything to rest on the AC/DC adapter cord or AUDIO IN cable. Do not place this product where the cord can be abused by animals or persons walking on it.
9. Never push objects of any kind into this product through the cabinet slots as they may touch dangerous voltage points or short out parts that could result in a risk of fire or electric shock. Never spill liquid of any kind on the product.
10. To reduce the risk of electric shock, do not disassemble this product. Opening or removing covers may expose you to dangerous electric shock when the product is subsequently used. Take it to a qualified service center when service is required.
11. Unplug this product from the wall outlet and refer to qualified service personnel under the following conditions:
 - a. If liquid has been spilled into the product.
 - b. If the product has been exposed to rain or water.
 - c. If the product does not operate normally by following the operating instructions. Adjust only the controls that are covered by the operating instructions because improper adjustment of other controls may result in damage if the product has been dropped or the cabinet has been damaged.

HEADPHONE SYSTEM PARTS LIST



HEADPHONE SYSTEM PARTS LIST IDENTIFICATION

- 1** RF transmitter
- 2** RF receiver headphones
- 3** Power On/Off switch
- 4** Power On indicator light
- 5** Rechargeable 1.2 V 300 mAh batteries (Ni-Cd, LR03/AAA size)
- 6** Charge contacts
- 7** 12V 150 mA AC power adapter (UL LISTED)
- 8** Jack plug adapter (3.5 mm/6.3 mm diameter)
- 9** RCA socket audio adapter cable, (3.5mm input jack to two RCA plugs)
- 10** Operating indicator light (power)
- 11** Charge indicator light (charging)
- 12** Audio connection cable with 3.5mm jack
- 13** Volume control knob (VOL)
- 14** AUTO SCAN indicator
- 15** AUTO SCAN button
- 16** Battery door
- 17** DC IN connector
- 18** Audio input cable
- 19** Channel selector (CHANNEL 3 2 1)

Before Using the Headphone System

An initial 24-hour charge is required to ensure an acceptable service life for the rechargeable batteries. Always ensure that the headphones are switched to the Off position while the batteries are charging.

INSTALLATION

RECEIVER HEADPHONES

1. Open the cover of the rechargeable battery compartment located on the side of the right-hand receiver headphone.
2. Insert two rechargeable LR03/AAA size batteries taking care to ensure correct polarity.
3. Close the battery compartment cover.

TRANSMITTER

1. Connect the provided AC/DC power to an electrical outlet.
2. Connect the AC/DC power adapter cable to the DC IN input connector located on the transmitter rear panel.
3. Plug in the AUDIO IN cable located on the back of the transmitter panel to a headphones/earphones output on your TV, stereo system, VCR, PC, or radio. Depending on the size of the Audio Out port of your audio component, you may need to use the included Jack Plug Adapter. If the stereo (or other audio component) has a two-hole Audio Out (left and right) connection, use the RCA socket audio adapter provided. Connect it to the end of the AUDIO IN cable and then to the Audio Out connection on the component making sure to match the RED to RED and the WHITE to WHITE.
4. A cable is provided from the transmitter rear panel that can be connected to the audio output (left and right) on a TV, stereo system, VCR or radio, or to a headphones/earphones output using the connector supplied.

The red operating indicator will light up as soon as you have connected the power adapter to the outlet and the audio cable to a signal source. If the operating indicator light remains off, switch on the audio source and increase its output volume level until the red indicator light comes on.

CHARGING THE BATTERIES

1. Place the On/Off switch on the receiver headphones in the Off position.
2. Place the headphones on the transmitter, taking care to ensure that the charge contacts touch the transmitter's charge prongs.
3. The charge process starts automatically and the green indicator light comes on. Be sure to charge new batteries for 24 hours before using them for the first time in the headphones.

WARNING:

Never attempt to recharge conventional dry cells.

Never use another type of battery or non-rechargeable batteries to replace the rechargeable (LR03/AAA) batteries supplied. When the headphones are not in use, move the switch to the OFF position to avoid damaging the batteries. The batteries must always be fully charged before use.

IMPORTANT:

When replacing the batteries or disposing of the unit, always comply with applicable laws relating to the disposal of batteries. Please place them in a proper disposal container to ensure that they are eliminated safely and in an environmentally friendly way.

OPERATION

1. Switch on the sound source (TV, PC, VCR, DVD player or audio component) that the transmitter is connected to.
2. Place the headphones On/Off switch in the On position.
3. Before placing headphones on head, make sure the volume is not too loud and then place the headphones on your head and adjust the volume to obtain the desired sound level.
4. There are 3 available channels. Press the Auto Scan button on the headphones to search for the best reception. The corresponding indicator light will illuminate.

NOTE:

You should then be able to move freely from one room to another with no interference. If interference does occur (interruptions in the signal), press the Auto Scan button once to find a better reception channel.

- A** For better stereo reception, stay approximately 23 feet away from the transmitter when you press Auto Scan.
- B** If it is impossible to find a satisfactory frequency, change the channel setting (CHANNEL 3·2·1) on your transmitter, then press Auto Scan to find the corresponding channel.

To protect the transmitter and save power, the transmitter will automatically switch off after approximately four minutes if the signal from the audio source is too weak. If, however, the signal returns to an acceptable level, the transmitter automatically switches back on.

TECHNICAL SPECIFICATIONS

Transmission mode	: UHF stereo
Carrier frequency	: 900Mhz
Operating voltage	: Transmitter – 12V 150 mA Receiver – 2.4 V (two rechargeable batteries, LR03/AAA size)
Frequency response	: 50 Hz – 12 KHz
Distortion	: 1%
Signal-to-noise ratio	: 72 dB
Channel separation	: 50 dB
Range	: 165 feet max.

NOTE: This equipment has been tested and found to comply with the limits for a Class B digital device, pursuant to Part 15 of the FCC Rules. These limits are designed to provide reasonable protection against harmful interference in a residential installation. This equipment generates, uses and can radiate radio frequency energy and, if not installed and used in accordance with the instructions, may cause harmful interference to radio communications. However, there is no guarantee that interference will not occur in a particular installation. If this equipment does cause harmful interference to radio or television reception, which can be determined by turning the equipment off and on, the user is encouraged to try to correct the interference by one or more of the following measures:

- Reorient or relocate the receiving antenna.
- Increase the separation between the equipment and receiver.
- Connect the equipment into an outlet on a circuit different from that to which the receiver is connected.
- Consult the dealer or an experienced radio/TV technician for help.

Changes or modifications not expressly approved by the party responsible for compliance could void the user's authority to operate the equipment.

TROUBLESHOOTING

NO SOUND

- Ensure that the AC power adapter is pushed fully into the power outlet and that its cable is properly connected to the DC IN 12V connector on the transmitter.
- Ensure that the headphones On/Off switch is in the On position.
- The headphones battery charge level may be too low. Recharge the batteries or replace them with fully charged batteries.
- Ensure your TV set, stereo system, VCR, DVD player or audio component is switched on and set to a channel that broadcasts an audio signal.
- The connected audio/video equipment may not be in playback mode. Start playback on the equipment.
- Ensure the source is broadcasting at a sufficient volume by increasing the volume as needed on the source component. Use the headphones volume control to increase the sound level.
- Check the battery compartments to ensure batteries are fully seated and that polarity positions are correct.

DISTORTION

- Ensure that the "Stereo" indicator is lit. If not, press the autoscan button on the headphones until it illuminates.
- Use the channel selector to change the transmitter's frequency. Press the auto tune button on the headphones until the "Stereo" indicator comes on.
- The headphones battery charge level may be too low. Recharge the batteries or replace them with fully charged batteries.
- The headphones may be too far away from the transmitter. Move to a location closer to the transmitter.
- The audio signal input level may be too low. Increase the volume from the audio source.

FOR MAXIMUM PERFORMANCE

When available, a variable output on the source component will offer increased volume control and help reduce distortion. Examples of variable outputs are headphone jacks, computer speaker outputs and some TV RCA output jacks.

- a. When using a variable output jack, set the volume of the source component to mid-level and adjust headphone volume control until desired result is achieved. If headset volume is not sufficient, adjust source volume. If distortion in the headset occurs, reduce volume control on source component.
- b. Fixed outputs allow for volume regulation through the headset only. Examples of fixed outputs are RCA jacks (VCR, Tape, Video or CD outputs).

IC Statement:

Operation is subject to the following two conditions: (1) this device may not cause interference, and (2) this device must accept any interference, including interference that may cause undesired operation of the device.