

MEDIAGATE

MG-25P

Manual



Contents

Introduction.....	3
Specifications	3
Precautions.....	4
System Requirements.....	4
Package Content	4
Product Overview	5
1. Use as External USB HDD.....	6
1.1 Insert Hard Disk.....	6
1.2 Format Built-in HDD via USB	7
1.2.1 Windows 98SE, ME.....	7
1.2.2 Windows 2000.....	9
1.2.3 Windows XP	11
1.3 Copy Data via USB	13
1.3.1 Windows 98SE.....	13
1.3.2 Windows ME.....	14
1.3.3 Windows 2000, XP	15
1.3.4 Linux	16
1.3.5 Mac	16
2. Use as Multimedia Player	17
2.1 Connect to External AV Device	17
2.1.1 Connect Video Cable	17
2.1.2 Connect Audio Cable	18
2.1.3 Connect External IR Receiver.....	18
2.2 Basic Setup	19
2.2.1 Video Setup	19
2.2.2 Audio Setup	21
2.2.3 Other Setup	22
2.2.3.1 TV Type Setup	22

2.2.3.2 Jpeg File Preview Setup	22
2.2.3.3 Language Selection Setup.....	22
2.2.3.4 Check Firmware Version.....	22
2.3 Basic Screen Menu	23
2.3.1 Media Type Selection	23
2.3.2 File Selection.....	23
2.4 Play Video Files	24
2.5 Play DVD Files.....	27
2.6 Play Music Files.....	29
2.7 Play Photo Files.....	31
2.8 Make a Play-List.....	33
2.9 Remote Controls.....	34
2.10 Others	35
2.10.1 Music Slide Show	35
2.10.2 MP3 Quick Play	35
2.10.3 Change Background Image	35
2.10.4 Change OSD Text Color	35
2.10.5 Firmware Upgrade	35

Technical Support..... 35

Introduction

MG-25P Player is 2.5" HDD interface type of MPEG4 player based on USB 2.0 High Speed.

It can be connected to TV in home or a monitor. It is not only an external USB HDD but also the best portable AV device that displays Music, Movie and photo.

- Digital Multimedia Player via Home TV or Car TV
- USB 2.0 External Storage via PC(NTFS, FAT32)
- Audio - Stereo, Digital Coaxial 5.1ch. Sound
- Video - Composite, HD Component 480p, 720p, 1080i
- DVD Manager - Playback of DVD File same as Original DVD Title
- Easy Firmware Upgrade.

Specifications

Product Name	MediaGate MG-25P	
Power	DC 5V / 2A	
Weight	160g (without HDD) approx.	
Dimension	80 x 148 x 24 mm approx.	
Available OS	Windows 98SE/ME/2000/XP, Mac OS 9.0 Higher, Linux 2.4 Higher	
USB Interface	480Mbps USB 2.0 (USB 1.1 Compatible) / Slave	
HDD Type	2.5" IDE HDD	
HDD File System	NTFS / FAT32	
TV Type	NTSC / PAL	
Supported Format	Movie	MPEG 1, 2, 4 (MPG, MPEG, AVI, M2V, DAT, VOB, IFO etc.) DivX, XviD (except GMC, Qpel option applied)
	Music	MP3, OGG Vorbis, WAV, WMA (except WMA9 pro.lossless)
	Photo	JPG(JPEG)
Video Output	COMPOSITE COMPONENT Y, Pb, Pr (480p, 720p, 1080i Progressive Scan)	
Audio Output	STEREO L-R DIGITAL COAXIAL (DTS Pass-Through Only)	
External IR	Support (Optional)	
Working Temperature	0°C ~ 60°C	
Working Humidity	10% ~ 50%	

Precautions

- We strongly recommend you to back up the data to another safe media. We are not responsible for data damage or loss in built-in HDD.
- It's better unplug the power adaptor when you do not use for a long time.
- MG-25P does not support the DivX, XviD codec of video files that has GMC, Qpel option.
- MG-25P supports only "Pass-Through" for DTS Audio codec.
- Don't power off while a file is playing.
- If the length of USB cable is too long, it may not be connected smoothly (Recommend: up to 3 meters)
- If you have USB 1.1 Host Adapter, MG-25P is working at USB1.1 speed.
- On less than 6GB HDD, data damage or loss may be caused. We recommend you to use more than 6GB HDD.
- [Very Important] : If unformatted HDD is insert into MG-25P, a PC can not detect the HDD. Make sure that the HDD is formatted.
- Be careful of dropping or impact or shock. If a HDD is damaged by dropping, impacting, shocking, then contact manufacturer or the seller.
- We recommend you to use the all supplied cables or accessories that are customized for the best performance of MG-25P. Using other cables or accessories may not support the best performance.
- [Very Important] : Be away from water, heavy moisture. If MG-25P has a liquid, unplug from a PC or Power right away. If you use MG-25P under this condition, the HDD may be fired or you may have electric shock.
- Don't touch MG-25P by wet hands. It may cause electric shock.
- Be away from heat, a direct ray of light.
- Be away from devices that transmit strong magnetic signal. It may cause data damage or loss on HDD.
- Don't disassemble as the user's own accord. It may cause MG-25P damaged or loose the data.

System Requirements

- Interface : 480Mbps USB 2.0 High-Speed (USB 1.1 compatible)
- Power Supply : USB Bus Power or DC Power
- Available OS : Windows 98SE/ME/2000/XP, MAC 9.0 higher, Linux 2.4 higher
- Available System : Desktop / Laptop PC that has USB port(s)

Package Content

Primary Package

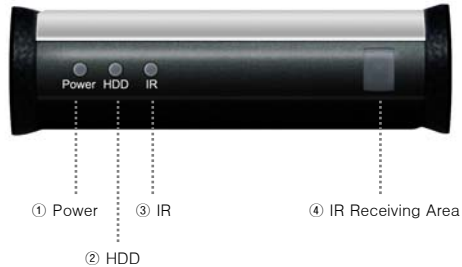
- MG-25P
- Remote Control & Battery
- USB Cable, AV Cable(Composite + Stereo L-R),
- Component Video Cable
- Coaxial Audio Cable
- Power Adapter
- Windows 98 Driver CD
- User Manual

Optional Package

- External Remote Control IR Receiver
- Cigar Jack Lighter

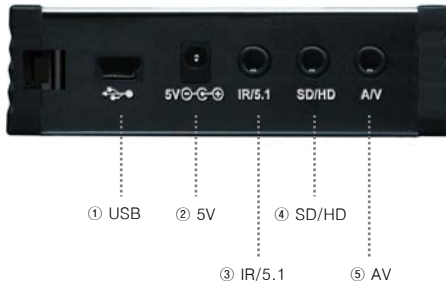
Product Overview

- Front View -



Front View	① Power	Power LED
	② HDD	HDD LED
	③ IR	IR LED
	④ IR Receiving Area	IR receiving area for remote signals

- Back View -



Back View	① USB	Connect USB cable
	② 5V	Connect power Cable
	③ IR/5.1	Connect coaxial cable for 5.1 ch. digital audio output (or Connect external remote control IR receiver)
	④ SD/HD	Connect component Y, Pb, Pr cable for video output
	⑤ AV	Connect AV cable for composite video and(or) Stereo audio output

1. Use as External USB HDD

1.1 Insert Hard Disk

- ✓ Use 2.5" IDE Hard Disk for Laptop(or Notebook) PC.
- ✓ Hard Disk should be "Master". However, if the Hard Disk supports "Single" mode, you need to try to set "Single" mode.



① Grip the hasp and pull back the front panel, and then open the top cover.



② Pull the PCB out.



③ Grip HDD and insert it into the pins of PCB (be sure to match the 44 pins)



④ Screw HDD on PCB by using the supplied screws.



⑤ Insert the PCB into the case, and then close the top cover and front panel.

1.2 Format Built-in HDD via USB

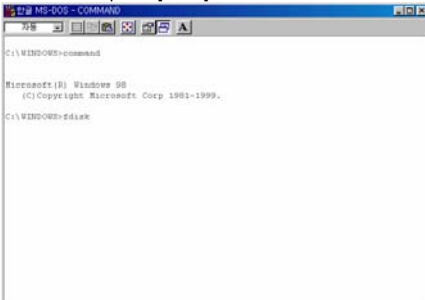
If the built-in HDD is not formatted, PC can not detect the hard disk drive. If so, format the hard disk first referring to the following guide. * If the hard disk drive is already formatted, see “1.3 Copy Data via USB”.

1.2.1 Windows 98SE, ME

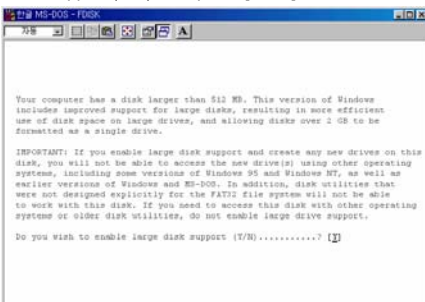
1) Install Windows 98 Driver. Find the driver at Windows 98 CD→MediaGate MG-25P→English→Windows 98 Driver Directory. After finishing installation, Connect MG-25P to PC via USB cable. **(If not detected, plug power cable of MG-25P)**

2) Select [Start→Program→Accessories→MS-DOS Prompt] on Windows.

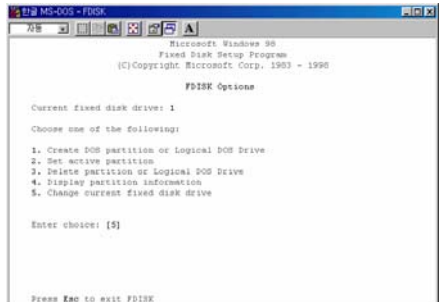
3) Type “fdisk” command at Command Prompt window and press [Enter].



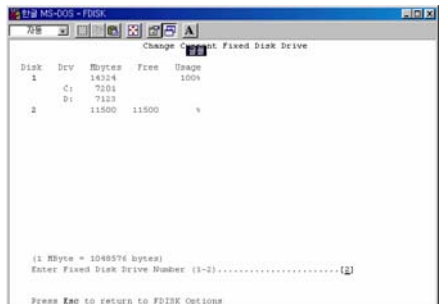
4) Type the “Y” at the “Do you wish to enable large disk support (Y/N)” and press [Enter].



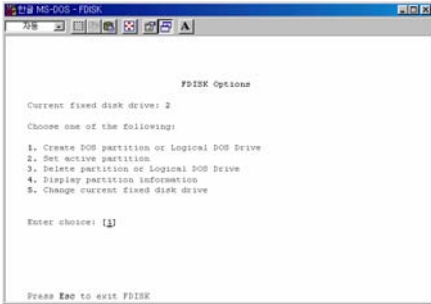
5) Select “5. Change current fixed disk drive” and press [Enter].



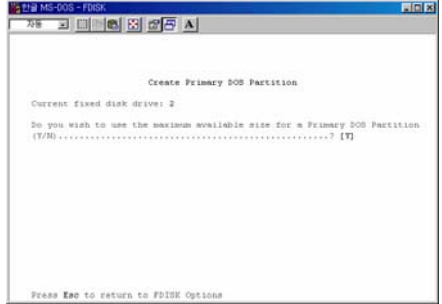
6) Type the last Disk number in 0% usage.



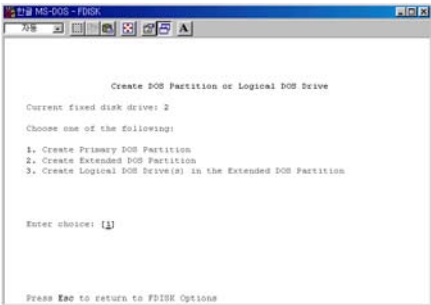
7) Select “1. Create DOS partition or Logical DOS Drive” and press [Enter].



8) Select " 1. Create Primary DOS Partition " and press [Enter].

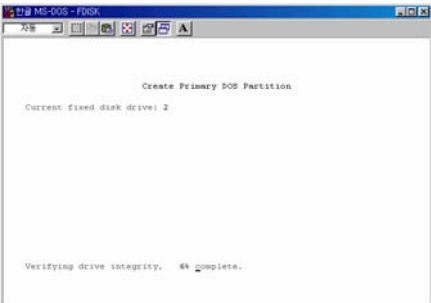


11) Type the capacity or % which you want to use and press [Enter].

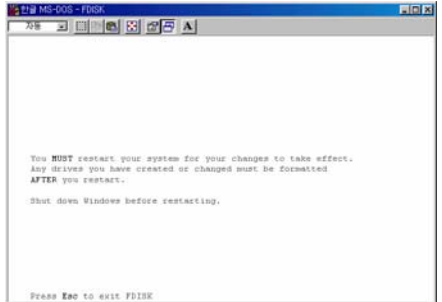


9) Wait until finishing verifying the drive integrity.

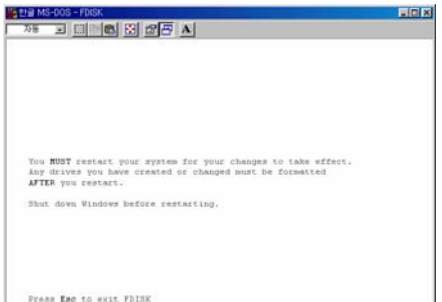
12) Drive integrity verification will start again. After finishing that, press [ESC] key when the "Primary DOS Partition created, drive letters changed or added" message displays.



10) After finishing drive integrity verification, type "Y" at "Do you wish to use the maximum available size for a Primary DOS Partition (Y/N)".

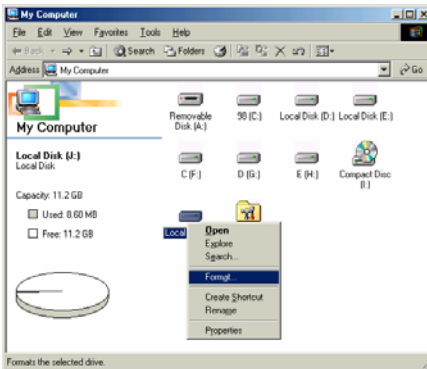


13) Press [ESC] key again. " Shut down Windows before restarting" message will be displayed. Press [ESC] key finally for exiting FDISK.



14) Type " exit " command at " C:WINDOWS> " and press [Enter] for returning to windows screen.

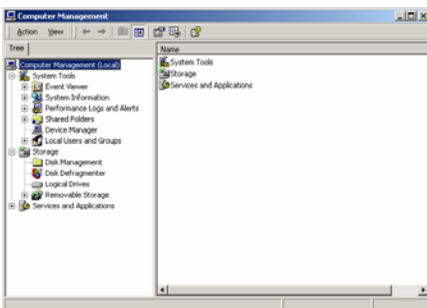
15) Unplug the MG-25P and plug again. New volume will be appeared at [My Computer]. Click mouse right button at the new volume and select [Format].



1.2.2 Windows 2000

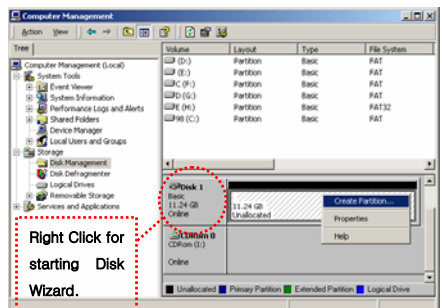
1) Connect MG-25P to PC via USB cable.
(If not detected, plug power cable of MG-25P)

2) Select [Start → Settings → Control Panel → Administrative Tools → Computer Management → **Disk Management**] on Windows.

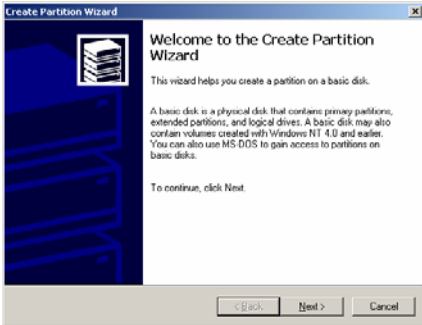


3) If the [Disk Signature and Upgrade Disk Wizard] is started, click Next to progress for finishing the wizard. If this wizard not started, right click the left area of unallocated drive at no. 4 figure, and start the wizard.

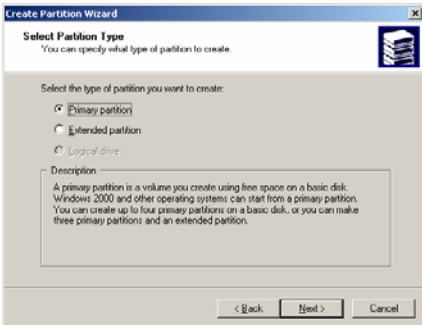
4) After finishing the [Disk Signature and Upgrade Disk Wizard], Right-click the Unallocated Drive. And then, click [**Create Partition**].



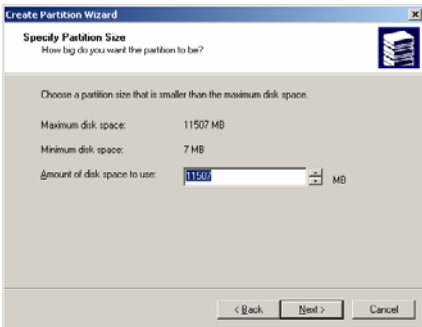
5) Click [Next] at the Create Partition Wizard Windows.



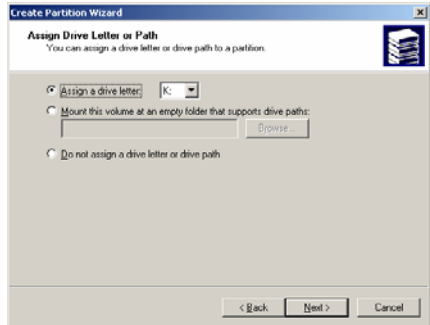
6) Check [Primary Partition] and click [Next].



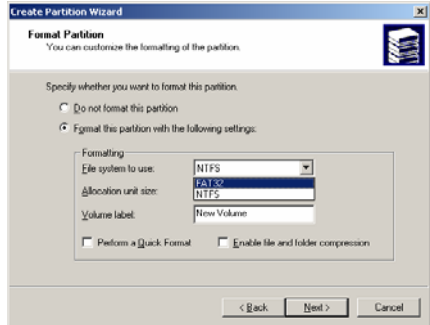
7) Type number that you want to use and click [Next].



8) Assign a drive letter and click [Next].



9) Choose FAT32 or NTFS at File system to use and click [Next].



✓ FAT 32 system is available on windows 98SE/ME/2000/XP, but NTFS system is available on windows 2000/XP only.

✓ If you choose FAT32 system on Windows 2000/XP, one drive letter's maximum size will be limited to 32GB. If you want to use one drive letter of 32GB more, you have to format on windows 98SE/ME.

✓ If you want to create two or more partition with one disk drive, it will be recommended "Primary Partition"

10) After finishing Wizard setup, formatting will be progressed automatically.

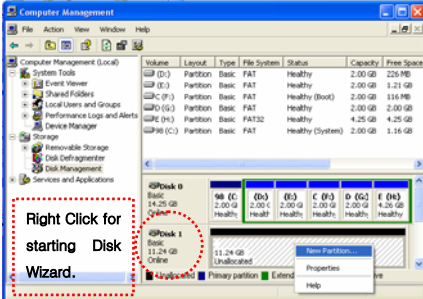
1.2.3 Windows XP

1) Connect MG-25P to PC via USB cable.
(If not detected, plug the power cable of MG-25P)

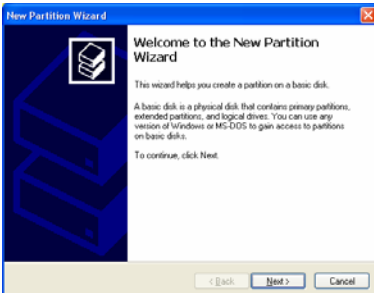
2) Click [Settings→Control Panel→ Administrative Tools→Computer Management→Disk Management] on Windows. If you can not find Administrative Tools at Control Panel, click “ switch to classic view ” in left – up corner on screen.

3) If the [Disk Signature and Upgrade Disk Wizard] starts, click [Next] to progress for finishing the wizard. If this wizard not started, right click the marked left area of unallocated drive at no 4. figure and start the wizard.

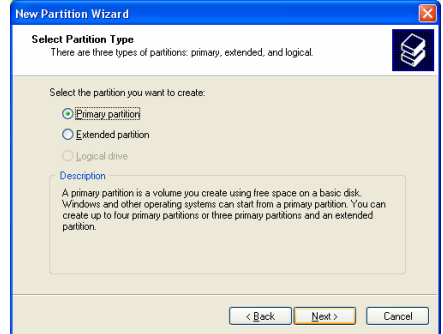
4) After finishing the [Disk Signature and Upgrade Disk Wizard], Right-click the 'Unallocated' Drive. And then, click [Create Partition].



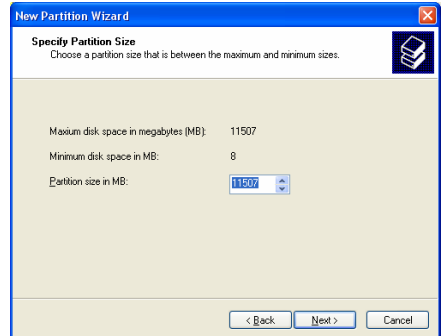
5) Click [Next] at the New Partition Wizard.



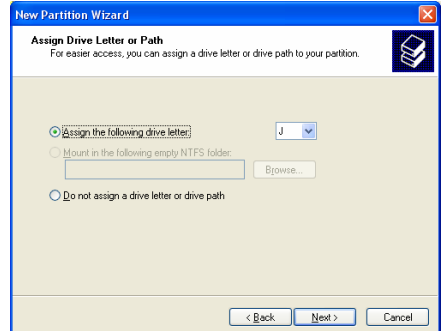
6) Check [Primary Partition] and click [Next].



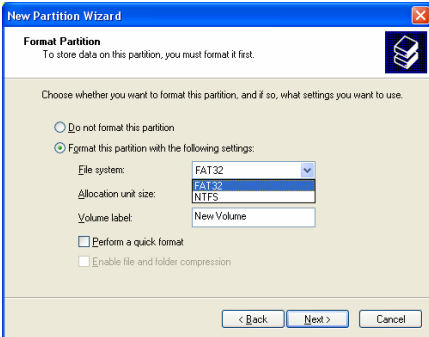
7) Type number that you want to use and click [Next].



8) Assign a drive letter and click [Next].



9) Choose FAT32 or NTFS at File system to use and click [Next].



- ✓ FAT 32 system is available on windows 98SE/ME/2000/XP, but NTFS system is available on windows 2000/XP only.
- ✓ If you choose FAT32 system on Windows 2000/XP, one drive letter's maximum size will be limited to 32GB. If you want to use one drive letter of 32GB more, you have to format on windows 98SE/ME.
- ✓ If you want to create two or more partition with one disk drive, it will be recommended "Primary Partition"

10) After finishing Wizard setup, formatting will be progressed automatically.

1.3 Copy Data via USB

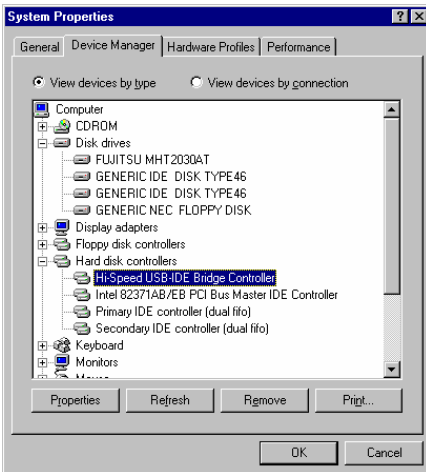
It is possible to use as a external USB hard disk drive.. You can copy data from your PC to built-in HDD of MG-25P via USB. It is possible to play media files at the hard disk on TV set.

*** If not detected when connecting PC, recommend to connect power cable of MG-25P.**

1.3.1 Windows 98SE

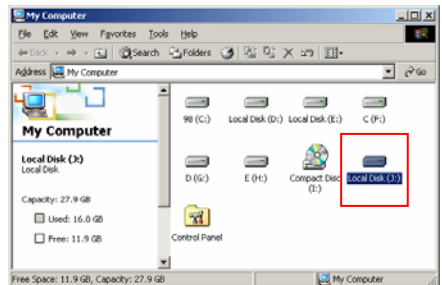
✓First, you have to install Windows 98 Driver before connecting PC. Find the driver at Windows 98 driver CD→MediaGate MG-25P→English→Windows 98 Driver Directory. After finishing installation, Connect MG-25P to PC via USB cable. If not detected, plug power cable of MG-25P.


1) After installing the driver, connect mg-25P. And then, check the driver installation at Windows [Start→Settings→Control Panel→System →Device Manager→Hard disk controllers→Hi-Speed USB-IDE Bridge Controller].

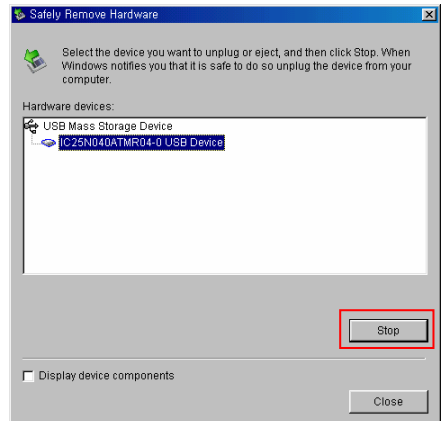


2) Check 'My Computer' or 'Explorer', there should be a new volume. You can copy any data to this volume.

✓If a new volume is not be appeared, check HDD format or not, and HDD file system. Windows 98SE only detect FAT32 file system. Or connect power cable of MG-25P.

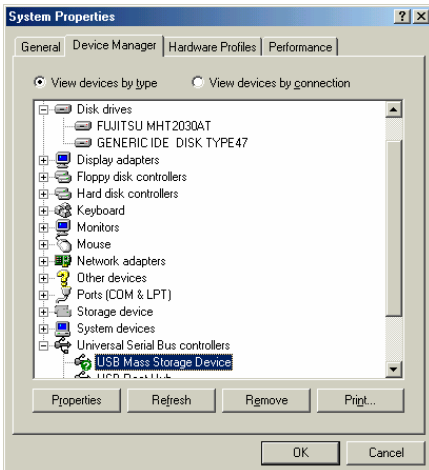


3) After copying data, remove MG-25P with using remove icon  at Windows right-down corner. If you don't follow this procedure, data and MG-25P may have damage.

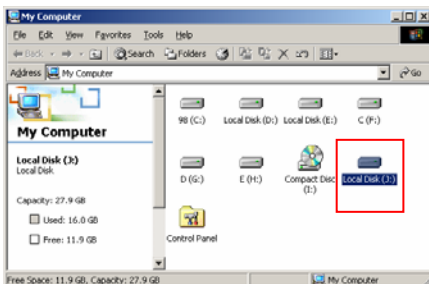


1.3.2 Windows ME


1) After connecting MG-25P, windows itself will install driver automatically. And then, check the driver installation at Windows [Start > Settings > Control Panel > (view all Control Panel options) > System > Device Manager > Universal Serial Bus controllers > USB Mass Storage Device]

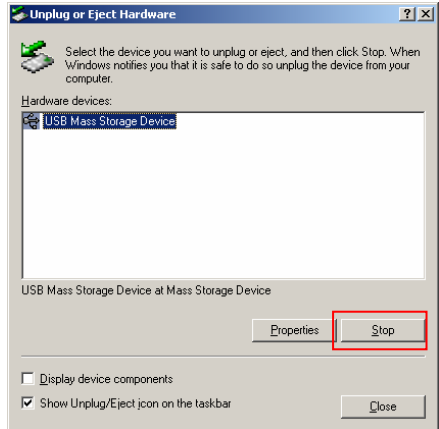


2) Check 'My Computer' or 'Explorer', there should be a new volume. You can copy any data to this volume.



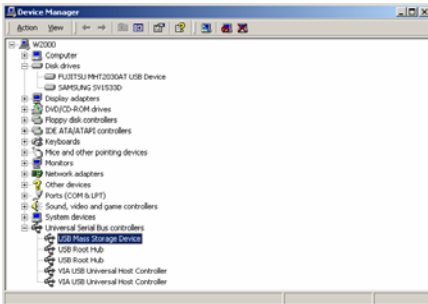
✓ If a new volume is not be appeared, check HDD format or not, and HDD file system. Windows ME only detect FAT32 file system. Or connect power cable of MG-25P.

3) After copying data, remove MG-25P with using remove icon  at Windows right-down corner. If you don't follow this procedure, data and MG-25P may have damage.

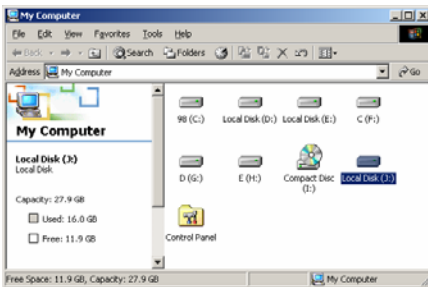


1.3.3 Windows 2000, XP


1) After connecting MG-25P, windows itself will install driver automatically. And then, check the driver installation at Windows [Start > Settings > Control panel > (switch to classic View on Windows XP) > system > Hardware > Device manager > Universal Serial Bus controllers > USB Mass Storage Device].

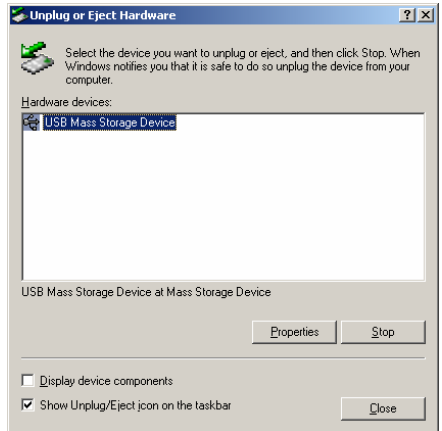


2) Check 'My Computer' or 'Explorer', there should be a new volume. You can copy any data to this volume.



✓If new volume is not be appeared, check HDD format or not. and HDD file system. Windows 2000, XP detect both FAT32 and NTFS file system. Or connect power cable of MG-25P.

3) After copying data, remove MG-25P with using remove icon  at Windows right-down corner. If you don't follow this procedure, data and MG-25P may have damage.



✓When you see 'Non High-Speed USB Hub Message' The message will be displayed On windows XP when you plug MG-25P into USB 1.1 spec. Host adapter.

1.3.4 Linux

✓It can be available on Linux 2.4 higher.

[Automatic Mount]

After booting, do log-in.

Connect MG-25P -> Power On MG-25P -> Check the detection with [fdisk] -> make Mount Pointer (ex. mediatest) at Folder Mount(/mnt) -> Edit [/etc/fstab] -> add the following;

```
/dev/sda /mnt/mediatest vfat noauto, user 0 0 (in case of FAT32 HDD)
```

```
/dev/sda /mnt/mediatest ntfs noauto, user 0 0 (in case of NTFS HDD)
```

Do Log-in again.

✓above example "sda" is assumed that the MG-25P will be detected as "sda" on your system. If not, you have to write the drive name which is detected as "USB Mass Storage", not "sda"

[Manual Mount]

Connect MG-25P -> Power On MG-25P -> Check the detection with [fdisk] -> make Mount Pointer (ex. mediatest) at Folder Mount(/mnt) -> Edit [/etc/fstab] -> add the following;

```
mount -t vfat /dev/sda /mnt/mediatest (in case of FAT32 HDD)
```

```
mount -t ntfs /dev/sda /mnt/mediatest (in case of FAT32 HDD)
```

✓above example "sda" is assumed that the MG-25P will be detected as "sda" on your system. If not, you have to write the drive name which is detected as "USB Mass Storage", not "sda"

[How to stop using]

Do [umount] at Device Control.

1.3.5 Mac

✓It can be available on Mac 9.0 higher.

No need to install the installation driver at Mac OS 9.x version and the MG-25P will be detected automatically. If the MG-25P is detected correctly, an icon is appeared at a monitor.

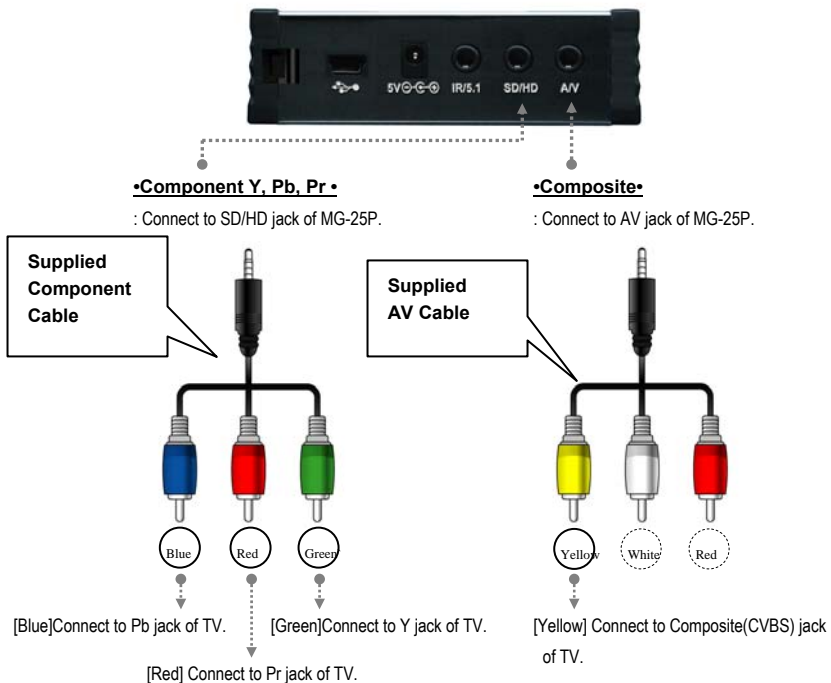
When removing MG-25P safely, drag the icon to a trash and unplug MG-25P.

2. Use as Multimedia Player

2.1 Connect to External AV Device

2.1.1 Connect Video Cable

MG-25P supports 2 type of video output; "Composite, Component". Use video connection that your TV supports. Normally, TV supports composite video connection. **Do not connect USB cable when connecting TV.**

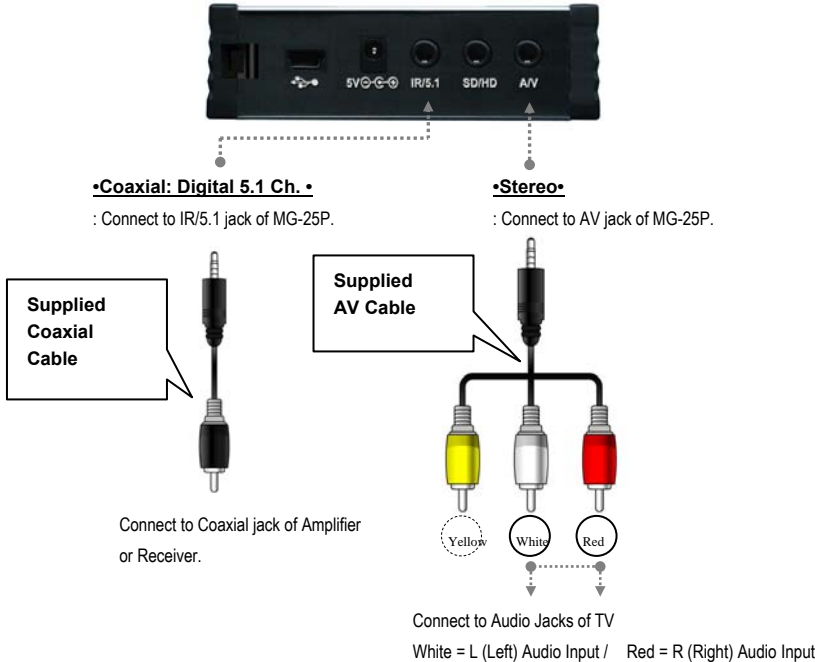


✓ When you can not see normal screen after connecting video cable, check followings,

1. "TV" – Switch to Video Input Mode: Turn on TV, and switch to video input mode same as video connection. See TV user manual.
2. "MG-25P" – Switch to Video Output Mode: Press [VIDEO] button repeatedly. Whenever press [VIDEO], video output signal is changed.
3. After you see normal screen, you have to save video configurations of MG-25P. See "2.2.1 Video Setup".

2.1.2 Connect Audio Cable

MG-25P supports 2 type of audio output; "Stereo, Coaxial". Use audio connection that your TV or Audio set supports.
Do not connect USB cable when connecting TV.



✓When you can not hear sound after connecting Coaxial Cable, you have to change audio setup of MG-25P as Encoded Digital. See "2.2.2 Audio Setup"

2.1.3 Connect External IR Receiver

External IR Receiver is optional package, not primary one.

Connect the external IR receiver to IR/5.1 jack of MG-25P instead of Coaxial cable. External IR Receiver and Coaxial cable are not used at the same time.

2.2 Basic Setup

2.2.1 Video Setup

This is guide for setting video output of MG-25P. You have to setup MG-25P's video output mode same as TV set's video input mode.

✓When you can not see normal screen after connecting video cable, check followings,

1. "TV " – Switch to Video Input Mode: Turn on TV, and switch to video input mode same as video connection. See TV user manual.
2. "MG-25P" – Switch to Video Output Mode: Press [VIDEO] button repeatedly. Whenever press [VIDEO], video output signal is changed.
3. After you see normal screen, you have to save video configurations of MG-25P.

TV Video Input Mode	MG-25P Video Output Mode	Connection Jack of TV, MG-25P	Video Cable Type
Normal Video	TV Out: NTSC C/S-Video (HD Component OFF)	CVBS or Composite Jack (Generally Yellow Jack)	Supplied AV Cable
	TV Out: PAL C/S-Video (HD Component OFF)		
S-Video	Not supported	-	-
	Not supported		
Component 480i	TV Out: NTSC C/YPbPr (HD Component OFF)	Component 3 Jack * Y(Green), Pb(Blue), Pr(Red)	Supplied Component Cable * Y(Green), Pb(Blue), Pr(Red)
	TV Out: PAL C/YPbPr (HD Component OFF)		
Component 480p	HD Component Out On 480p		
Component 720p	HD Component Out On 720p		
Component 1080i	HD Component Out On 1080i		
✓NTSC, PAL : Standard of TV Output. Select a proper one for using in your country.			

< Setup Procedure >



① Turn on MG-25P and press [SETUP] on Media Type selection screen.

② Move to 'Video Setup' icon and press [ENTER].

③ Move to Video Output Mode that you want and press [ENTER].

④ Finally, press [SETUP] again for saving configurations.



Example of component video output settings.

2.2.2 Audio Setup

This is guide for setting audio output of MG-25P. You can use Stereo or Digital 5.1 ch..

- ✓ Analogue/DCPM: Select when you connect the supplied AV cables (Red / White) to TV or Audio set directly.
- ✓ Encoded Digital: Select when you want to listen through 5.1Ch by connecting receiver (or amplifier) with supplied coaxial cable.

<Setup Procedure>



① Turn on MG-25P and press [SETUP] in MediaType Selection screen.

- ② Move to 'Audio Setup' icon and press [ENTER].
- ③ Move to Audio Output Mode that you want and press [ENTER].
- ④ Finally, press [SETUP] again for saving configurations.

2.2.3 Other Setup

This is guide for setting TV Type, JPEG File Preview, Language Selection. In addition, current firmware version shows.

<Setup Procedure>



① Turn on MG-25P and press [SETUP] in MediaType Selection Screen.

② Move to 'Other Setup' icon and press [ENTER].

③ Move to settings that you want and press [ENTER].

④ Finally, press [SETUP] again for saving configurations.

2.2.3.1 TV Type Setup

Select one among 4:3 Letter Box, 4:3 Pan Scan, or 16:9.

2.2.3.2 Jpeg File Preview Setup

It is possible to enable or disable preview the photo file as a thumbnail image before playing.

2.2.3.3 Language Selection Setup

Select one language among English, German, Spanish, French, Italian, Portuguese, Danish, Swedish, or Dutch. User interface language will be changed according to the language.

2.2.3.4 Check Firmware Version

Current Firmware version will be displayed on the Other Setup screen.

2.3 Basic Screen Menu

2.3.1 Media Type Selection

After turning on MG-25P, you can see MediaType Selection screen. In this screen, you can select "Video", "Audio", "Photo" or make "Play-List" with ◀▶ arrow button. Press [ENTER]. Select one media type that you want to play.



2.3.2 File Selection

After selecting a Media type, 'File Selection' screen will be displayed. Move to a file that you want to play and press [ENTER] or [PLAY/PAUSE].



- ☞ **[ENTER] button** Play one file that you select. After finishing playback, return to 'file selection screen'.
- ☞ **[PLAY/PAUSE] button** After playing the file that you select, play next all files continuously.
- ☞ **▲ ▼ button** Move to files with pressing ▲ ▼ arrow buttons.
- ☞ **◀ button** Move to left icon with pressing ◀ arrow button. Press ▶ button in order to return to file selection screen.
- ☞ **NEXT ▶▶I, PREVI ◀◀ button** Move to Next or Previous page when there is too many files to list on one screen.

☞ Left Icon Descriptions

Play All	After the file that you select, play next all files continuously. It is same as [PLAY/PAUSE] button.
Media Select	Go to Media Type Selection directly.

2.4 Play Video Files

It is possible to play video files like AVI, MPG, MPEG, DAT, M2V, and VOB.

Select 'Video' icon in Media Type Selection screen. Video file list will be displayed. Just move to a file and press [ENTER] or [PLAY/PAUSE] button.



Select 'Video' icon in Media Type Selection screen.



Move to a file and press [ENTER] or [PLAY/PAUSE] button. Press [ENTER] for playing just the file or [PLAY/PAUSE] for playing all files from the selected file.



< Function and Button Descriptions >

Remote Control	Function	Descriptions
AUDIO	Dual Audio	It is possible to switch each audio language when the audio format is dual-audio, for example, including a local language and English.
SUBTITLE	Subtitle Move& Size	It is possible to change subtitle size and location. ◀▶ arrow button changes size and ▼▲ arrow button changes location. After doing, press [ENTER].
	Subtitle Select or Hide	The subtitle name same as video file is displayed on screen automatically. However, it is possible to open the other preferable subtitle files or hide.

	Subtitle Language Select	It is possible to switch each subtitle language when the subtitle is dual language format, for example, including a local language and English. * When selecting 'Discriminating subtitle language', first subtitle language will be displayed.
	Subtitle Sync.	It is possible to set the subtitle sync. with ◀▶ (one second) ▼▲ (60 second) when motion and subtitle sync is not matched.
4, 5, 6 Number Button	Subtitle Color Change	Subtitle color is changed when pressing number 4, 6 button. In order to return default color (white), press number 5.
Scr. SIZE	Zoom Vertical	Zoom screen vertically.
	Zoom Full	Enlarge the overall screen.
	Custom	Enlarge or reduce the screen by ▲▼◀▶ arrow buttons.
	Default	Return to original screen size and position.
	Screen Position	Move the screen to the direction with ▼▲◀▶ arrow buttons. Press [Brt.Cont] key for returning to the original screen position when applying Screen position.
TIME SEARCH	Jump to Preferable Playback Time	Move to a selected time of a file.
CANCEL	Delete Input Numbers	In time search box, this button deletes all numbers in 0.
Brt. CONT	Control luminosity, color depth, brightness	When pressing this button, 3 modes switch. After selecting a mode, change settings with ◀▶ arrow buttons.
FILE INFO	Show File Information	Show the file information which is being played. In order to hide the information, press this button again.
FF ▶▶ ▶ arrow button	Fast Forward	Whenever pressing this button, play speed is changed with 8x, 16x, 32x in forward.
REW ◀◀ ◀ arrow button		
VOLUME + ▲ arrow button	Volume Up	Volume up.
VOLUME - ▼ arrow button	Volume Down	Volume down.
MUTE	Sound Off	Mute the sound. In order to hear sound, press this button again.
ENTER	Playback a File	Play a file. After finishing playback, return to file selections screen.

PLAY / PAUSE ▶	Playback Next All Files	After the file that you select, play next all files continuously. It is same as [PLAY/PAUSE] button.
PLAY / PAUSE ▶	Pause	Pause playback, if pressing this button when a file is being played. In order to play again, press this button again.
PREV ◀◀	Playback Previous File	Play a previous file before a current playback file. If you used [ENTER] for playback, you can not use this function. This is available in playing all files as using [PLAY/PAUSE] button or 'Play All' icon.
NEXT ▶▶	Playback Next File	Play a next file after a current playback file. If you used [ENTER] for playback, you can not use this function. This is available in playing all files as using [PLAY/PAUSE] button or 'Play All' icon.
0 Number button	Screen Reset	If a frame of a video file is broken, green color runs on a overall screen. Press number [0 "Zero"] for screen reset.

2.5 Play DVD Files

DVD manager function support to play DVD Ripping File same as original DVD.

Make a folder and then save all ripping files into the folder. After connecting TV(or Monitor), select VIDEO_TS.IFO file at the folder. Make sure that all the ripping files including VIDEO_TS.IFO from one DVD title will be located at one folder.

✓If you can not find VIDEO_TS.IFO file among all the ripping files from an original DVD title, DVD manager function will not work.



Select 'Video' icon in Media Type Selection screen.



Move to the folder including DVD ripping files and select 'video_ts.ifo' file and press [ENTER] button.



< Function and Button Descriptions >

Remote Control	Function	Description
AUDIO	Select Audio Type	Audio type will be changed whenever pressing this button.
SUBTITLE	Select Subtitle Type	Subtitle type will be changed whenever pressing this button.
Scr. SIZE	Screen Size	Screen size will be changed when press the button.
MENU	Go to Menu	Move to main menu while playing DVD.
SLOW	Playback Slow	Play slowly 1/2x, 1/4x, and 1/8x whenever pressing this button.
REPEAT	Chapter, Title Repeat	Set chapter, title repeat.

A-B REPEAT	A-B repeat	Set the A-B repeat.
TITLE	Go to Title Menu	Move to title menu while playing DVD.
ANGLE	Angle	Apply angle function.
FILE INFO	Show File Information	Show the file information which is being played. In order to hide the information, press this button again.
TIME SEARCH	Jump to Preferable Playback Time	Move to a selected time of a file.
CANCEL	Delete Input Numbers	In time search box, this button deletes all numbers in 0.
Br. CONT	Control luminosity, color depth, brightness	When pressing this button, 3 modes switch. After selecting a mode, change settings with ◀▶ arrow buttons.
PREV I◀◀	Playback Previous Chapter	Play a previous chapter.
NEXT ▶▶I	Playback Next Chapter	Play a next chapter.
FF ▶▶	Fast Forward	Whenever pressing this button, play speed is changed with 8x, 16x, 32x, 48x in forward.
REW ◀◀	Rewind	Whenever pressing this button, play speed is changed with 8x, 16x, 32x, 48x in backward.
ENTER	Playback	Play 'Video_ts.ifo' file.
PLAY / PAUSE ▶II	Pause	Pause playback, if pressing this button when a file is being played. In order to play again, press this button again.
VOLUME +	Volume Up	Volume up.
VOLUME -	Volume Down	Volume down.
MUTE	Sound Off	Mute the sound. In order to hear sound, press this button again.

2.6 Play Music Files

It is possible to play music files like MP3, OGG, WAV, WMA.

Select Audio icon in Media Type Selection screen. Music file list will be displayed. Just move to a file and press [ENTER] or [PLAY/PAUSE] button.



Select 'Audio' icon in Media Type Selection screen.



Move to a file and press [ENTER] or [PLAY/PAUSE] button. Press [ENTER] for playing just the file or [PLAY/PAUSE] for playing all files from the selected file.



< Function and Button Descriptions >

Remote Control	Function	Description
FILE INFO	Show File Information	Show the file information which is being played. In order to hide the information, press this button again.
TIME SEARCH	Jump to Preferable Playback Time	Move to a selected time of a file.
CANCEL	Delete Input Numbers	In time search box, this button deletes all numbers in 0.
Brt. CONT	Control luminosity, color depth, brightness	When pressing this button, 3 modes switch. After selecting a mode, change settings with ◀▶ arrow buttons.
PREV I◀◀	Playback Previous File	Play a previous file before a current playback file. If you used [ENTER] for playback, you can not use this function. This is available in playing all files as using [PLAY/PAUSE] button or 'Play All' icon.

NEXT ▶▶I	Playback Next File	Play a next file after a current playback file. If you used [ENTER] for playback, you can not use this function. This is available in playing all files as using [PLAY/PAUSE] button or 'Play All' icon.
FF ▶▶	Go to 10 Sec. in Forward	Go to 10 sec. in forward and play when a file is being played.
REW ◀◀	Go to 10 Sec. in Backward	Go to 10 sec. in backward and play when a file is being played.
ENTER	Playback a File	Play a file. After finishing playback, return to file selections screen.
PLAY / PAUSE ▶II	Playback Next All Files	After the file that you select, play next all files continuously. It is same as [PLAY/PAUSE] button.
PLAY / PAUSE ▶II	Pause	Pause playback, if pressing this button when a file is being played. In order to play again, press this button again.
VOLUME +	Volume Up	Volume up.
VOLUME -	Volume Down	Volume down.
MUTE	Sound Off	Mute the sound. In order to hear sound, press this button again.
SUBTITLE	Hide Mp3 Subtitle	It is possible to show mp3 subtitle which the mp3 file supports subtitle. In that case, this button will hide the subtitle. * mp3 subtitle supported file must be made by iriver caption editor program, not support LDB program.

✓How to Play MP3 without TV set. MP3 Quick Play

Make a 'music' folder (in a small letter not a capital letter) at root directory of built-in HDD and save MP3 files at the folder. If the HDD is divided into two or more partitions, make a 'music' folder at first partition.

Turn on MG-25P and just press [PLAY/PAUSE] button. MP3 files at 'music' folder will be played automatically. Additionally, after rebooting MG-25P, the last played file will be continued to play.

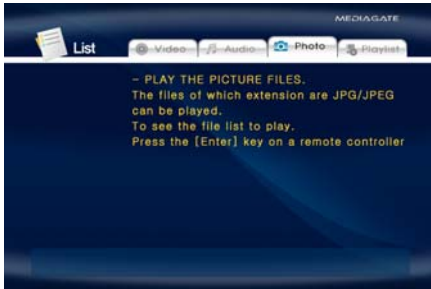
✓How to See MP3 Subtitle

It is possible to show MP3 subtitle which the MP3 file supports subtitle. MP3 subtitle supported file must be made by 'iriver caption editor' program, not support LDB program.

2.7 Play Photo Files

It is possible to play photo files like JPG(JPEG).

Select Photo icon in Media Type Selection screen. Photo file list will be displayed. Just move to a file and press [ENTER] or [PLAY/PAUSE] button.



Select Picture icon in Media Type Selection screen.



Move to a file and press [ENTER] or [PLAY/PAUSE] button. Press [ENTER] for playing just the file or [PLAY/PAUSE] for playing all files from the selected file.



< Function and Button Descriptions >

Remote Control	Function	Description
FILE INFO	Show File Information	Show the file information which is being played. In order to hide the information, press this button again.
PREV I ◀◀	Playback Previous File	Play a previous file before a current playback file. If you used [ENTER] for playback, you can not use this function. This is available in playing all files as using [PLAY/PAUSE] button or 'Play All' icon.
NEXT ▶▶ I	Playback Next File	Play a next file after a current playback file. If you used [ENTER] for playback, you can not use this function. This is available in playing all files as using [PLAY/PAUSE] button or 'Play All' icon.
ENTER	Playback a File	Play a file. After finishing playback, return to file selections screen.

PLAY / PAUSE ▶	Playback Next All Files	After the file that you select, play next all files continuously. It is same as [PLAY/PAUSE] button.
PLAY / PAUSE ▶	Pause	Pause playback, if pressing this button when a file is being played. In order to play again, press this button again.
FF ▶▶	Zoom In	Enlarge a photo.
REW ◀◀	Zoom Out	Reduce a photo.
ANGLE	Rotation	Rotate a photo.
방향키 ▲▼◀▶	Panning	Move the position of photo.
ENTER	Return to Original Photo	Return to original photo.
Brt. CONT	Control luminosity, color depth, brightness	When pressing this button, 3 modes switch. After selecting a mode, change settings with ▲▼ arrow buttons.

✓ **Photo Slide Show**

If you play all files with 'Play All' icon or [PLAY/PAUSE], photo slide shows will be started.

✓ **Music Slide Show**

Make a 'music' folder (in a small letter not a capital letter at root directory) of built-in HDD and save MP3 files at the folder. If the HDD is divided into two or more partitions, make a 'music' folder at first partition.

When you play one or all photo files, you can listen mp3 and see photo slide show together.

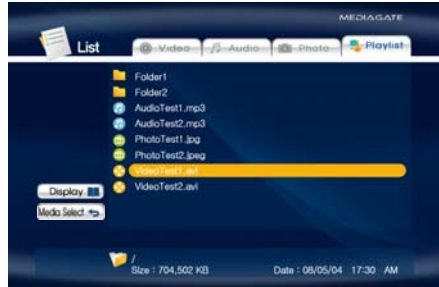
✓ **Photo Preview On, Off**

It is possible to enable or disable preview the photo file as a thumbnail image before playing at Other Setup screen.

2.8 Make a Play-List

User can register all media type of files like video, music, and photo to play-list. The registered media files to play-list will be played without discriminating media type.

✓ It is not possible to play each registered files independently. Use 'Play All, Random Play' icon or [PLAY/PAUSE] button. Additionally, registered play-list will be deleted after rebooting.



① Select Play List icon in Media Type Selection screen.

② Move to a file and press [ENTER] for adding to Play-List. After adding, press ◀ for moving to Left Icon. Move to 'Display' icon and press [ENTER].



③ Play-List screen appears. You can see just added files. Play as followings,

- Play All icon: play in order from selected file.
- Random Play icon: play in random.
- Play/Pause button: play in order from selected file.

* In order to move up to Left Icon, press [◀] button.

* Delete All icon means to delete all the added files.

* In order to delete a added file, move to a file on Play-List screen and press [ENTER] twice.

* In order to change location among added files, move to a file which you want to move and press [ENTER] and then move to the other file where you want to add and press [ENTER].

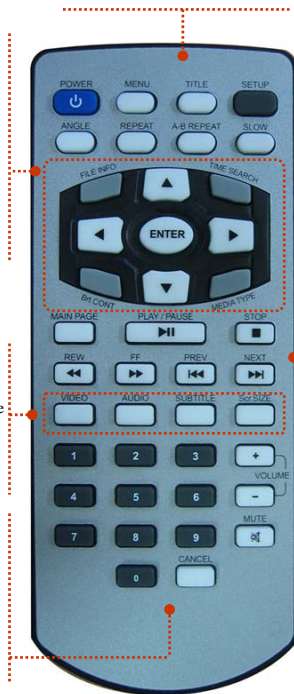
2.9 Remote Controls

This is guide for basic use of remote control. For more details, '2.3 Basic Screen Menu', '2.4 Play Video Files', '2.5 Play DVD Files', '2.6 Play Music Files', '2.7 Play Photo Files', '2.8 Make a Play-List'.

POWER	Turn On / Off	SETUP	Go to Setup Screen.
MENU	Go to DVD Main Menu		
TITLE	Go to DVD Title Menu	ANGLE	DVD Angle, Photo Rotation
REPEAT	Set DVD Chapter, Title Repeat	A-B REPEAT	Set DVD A-B Repeat
SLOW	Play DVD Slowly		

ENTER	Play a File
▲▼▶◀	Arrow Key
FILE INFO	Show File Info
TIME SEARCH	Jump to Specific play time
Brt. CONT	Set Luminosity, Color Depth, Brightness
MEDIA TYPE	Go to Media Type Selection Screen

VIDEO	Change Video Output Mode
AUDIO	Change Audio Type of Video, DVD file
SUBTITLE	Subtitle Settings
Scr. SIZE	Screen Size Settings



MAIN PAGE	Go to Media Type Selection Screen.
PLAY/PAUSE	Play next all files Pause
STOP	Stop Play
REW	Play Faster in Backward
FF	Play Faster in Forward
PREV	Go to Previous Page Play Previous File in Play All
NEXT	Go to Next Page Play Next File in Play All

How to Insert/Change Battery

- ① Pull off the battery tray for remote controller's body completely.
- ② Put the enclosed battery on the tray.
- ③ Insert the tray into remote controller's body completely.



2.10 Others

2.10.1 Music Slide Show

Make a 'music' folder (in a small letter not a capital letter) at root directory of built-in HDD and save MP3 files at the folder. If the HDD is divided into two or more partitions, make a 'music' folder at first partition.

When you play one or all photo files, you can listen mp3 and see photo slide show together.

2.10.2 MP3 Quick Play

This is for listening MP3 files without TV set.

Make a 'music' folder (in a small letter not a capital letter) at root directory of built-in HDD and save MP3 files at the folder. If the HDD is divided into two or more partitions, make a 'music' folder at first partition.

Turn on MG-25P and just press [PLAY/PAUSE] button. MP3 files at 'music' folder will be played automatically. Additionally, after rebooting MG-25P, the last played file will be continued to play.

2.10.3 Change Background Image

It is possible to change a background image on MG-25P. Save 'mybg.jpg' at root directory of built-in HDD. Background image will be changed as 'mybg.jpg'.

* Recommend to use 720x480 pixels image.

2.10.4 Change OSD Text Color

Press number 1 button before playing a file, OSD text color will be changed in dark or white. When you change background image in dark or white, this function will allow to read the text easily.

2.10.5 Firmware Upgrade

Download a upgrade file from local distributor in your country or visit at www.airlinktek.com

After connecting TV set, move to the upgrade file and press [ENTER]. Upgrade is progressed automatically.

After finishing upgrade, you can check firmware version on Setup screen. Press [SETUP] button.

Technical Support

Contact your local distributor in your country or

AL Tech, Inc. in Korea www.airlinktek.com, Tel 82-2-3011-9219, Fax 82-2-566-6186, E-mail sales@airlinktek.com