

TRIMMING NOSE, EAR & EYEBROW HAIR

To remove hair from the nose:

- Nose, Ear and Eyebrow Attachment should be on the groomer.
- Turn groomer on.
- Insert the cutting unit gently into the opening of the nostril.
- Rotate the groomer in a circular motion around the opening of the nostril.
- For the best cutting efficiency, gently move the groomer in and out of the nostril as you rotate it.
- Avoid inserting the groomer more than 5-6mm into your nostril to ensure safe trimming.

To remove hair from the ear:

- To remove hair from the eyebrows:

To remove hair from the ear:

- Nose, Ear and Eyebrow Attachment should be on the groomer.
- Turn the groomer on.
- Insert the groomer's cutting unit gently into the outer ear canal opening.
- Gently rotate the groomer in a circular motion.
- To trim hairs protruding from the surface of the ear and surrounding the outer ear canal, guide the groomer around the edge of the ear.
- Avoid inserting the groomer more than 5 – 6mm into your ear canal to ensure safe trimming.

To remove hair from eyebrows:

- Nose, ear, eyebrow attachment should be on the groomer.
- Turn the groomer on.
- Gently guide the cutting unit to stray, unwanted hairs along the eyebrow line or protruding from the eyebrow itself.
- Move the groomer slowly and carefully, so as not to accidentally cut any hairs that you do not intend to trim.

It is not recommended that you use the groomer to define or trim the entire eyebrow.

TO SHAVE USING THE MINI-FOIL SHAVER HEAD ATTACHMENT

- Shaver head attachment should be on the groomer.
- Hold the groomer so the shaver gently touches your face.
- Use short well-controlled movements to shave around your beard or moustache.

NOTE: The Mini-Foil Shaver Head Attachment is designed to shave the detailed areas of your beard, moustache and sideburns. It is not designed to shave your entire face.

CLEANING AND MAINTAINING YOUR GROOMER

We recommend you clean your Washable Personal Groomer after each use. The easiest and the most hygienic way to clean the groomer is by rinsing the product head after use with warm water. Always keep the groomer in the 'off' position when not in use.

AFTER EACH USE

- After each use, brush or rinse the accumulated hair from the Groomer Attachments. Ensure that the blades are dry before applying oil.
- To clean the body of the groomer, wipe with a damp cloth and dry immediately.

EVERY SIX MONTHS

The Blade Sets should be separated and cleaned. To separate the blades, remove the two screws holding the blade in place on the trimmer attachment. The blade will separate from the housing and both top and bottom blades can be cleaned as necessary. Do not attempt to remove the small oscillating blade. Replace the top blade, being sure that the teeth of the two blades are parallel before finally tightening the screws and then apply a few drops of Lubricating oil to the blades.

CLEANING CAUTIONS

- Cleaning should be done with a soft brush, such as the cleaning brush supplied with the product.
- Only use the light grade oil supplied or sewing machine oil on the blades, as it will not evaporate.

- Do not use liquid cleaners and harsh or corrosive cleaners on the groomer, blades or attachments.
- The groomer is suitable for cleaning under the tap with warm water.

IMPORTANT SAFETY INSTRUCTIONS

When using the Washable Personal Groomer, basic precautions should always be observed, including the following.

READ ALL INSTRUCTIONS BEFORE USING.

WARNING – TO REDUCE THE RISK OF BURNS, ELECTROCUTION AND FIRE OR INJURY TO PERSONS

- Do not use this groomer while it is connected to the Charging Adaptor.
- Do not place or store the Charging Adaptor where it can fall or be knocked into a sink or bath. Do not place in or drop into water or any other liquid.
- Unplug the Charging Adaptor from the electrical outlet immediately after use.
- Use this groomer only for its intended use as described in this manual. Do not use attachments not recommended by Remington.
- Never drop or insert any object into any opening of this groomer.
- Do not use this groomer with a damaged or broken cutting attachments or with damaged or broken cutting blades.
- Always store the Charging Adaptor in a moisture-free location.
- This groomer is manufactured for home use only.
- Keep this product out of reach of children. The use of this appliance by persons with reduced physical, sensory or mental capabilities or lack of experience and knowledge can give cause to hazards. Persons responsible for their safety should give explicit instructions or supervise the use of the appliance.
- Ensure that the groomer is detached from the Charging Adaptor when cleaning.
- If the Charging Adaptor becomes damaged or faulty it must be replaced.

Remington® strongly recommends that an approved Safety Switch (Residual current device) be installed to protect all bathroom power outlets. Ask an electrical contractor for advice.

SAVE THESE INSTRUCTIONS

This Groomer conforms to Radio Frequency requirements.

Warranty information can be found in the enclosed warranty card.

Any product purchased and used commercially carries a limited 90 day warranty.

REMINGTON®

www.remington-products.com.au

**Remington Products
Australia Pty Ltd**
Chifley Business Park
1 Chifley Drive
Mentone, Victoria, 3194
Australia

**Remington Products
New Zealand Ltd**
600 Great South Road
Building C, Ground Floor
Greenlane, 1051, Auckland
New Zealand

® Registered Trade Mark of Spectrum Brands, Inc., or one of its subsidiaries.

Rev. 07/09 Part No. T22-28642

©2009 SBI.

REMINGTON®

Professional



DLC Coated Blade

Professional
washable personal groomer

2 year
warranty

PG910

**REMINGTON® PROFESSIONAL DLC
WASHABLE PERSONAL GROOMER**

Use and Care Instructions

Thank you for purchasing the Remington® Professional Diamond Like Carbon (DLC) Washable Personal Groomer. Your groomer will provide a quick and easy way to maintain a well-groomed look for your facial hair. Short hair styles and tramlining detail can also be created. To help you define head-turning styles and to extend the life of your Personal Groomer, please read all instructions before using.

KEY PARTS



GETTING STARTED

CHARGING YOUR GROOMER

Before using your Groomer for the first time, charge for 14 to 16 hours.

- Check to ensure that the Groomer On/Off switch is OFF.
- Place your Groomer into the charging stand and then plug the charging adapter into a 230/240 volt domestic power outlet. The red Charge Indicator Light will glow to indicate that the groomer is charging.
- The batteries cannot be overcharged, but we recommend that charging be discontinued if the Groomer will not be used for an extended period of time.
- The Groomer will be fully charged in 14 to 16 hours.
- If the Groomer has not been used for a long period of time, it is advisable to recharge it for 14 to 16 hours before use.
- To preserve the life of the batteries, discharge them by running the Groomer until the blades move slowly. Switch off and recharge for 14 to 16 hours. Do this every six months.
- Use the Groomer only with the charging adapter supplied.

BEFORE USING YOUR GROOMER

Your Professional Personal Groomer is washable, enabling use in the shower and easy cleaning. To maintain the performance of the cutters, oil before each use and after rinsing.

OILING THE BLADES

Turn the Groomer on to distribute the oil evenly. Prior to trimming hair, wipe off any excess oil. Be sure that the Groomer is turned off when applying the oil.

REVERSIBLE ATTACHMENT COMBS

- The two Reversible Attachment Combs are for use with the 30mm Trimmer Attachment only. To attach a comb, gently slide the comb over the Trimmer Attachment. Arrows on the side of the comb indicate the length the hair will be cut to.
- The two combs allow you to select cutting lengths of 3mm, 6mm, 9mm & 12mm, each comb being marked accordingly.
- When first using the groomer, you may want to begin with the longest attachment comb to avoid trimming the hair too short. Cut the hair gradually, using short strokes. Always take off a little hair at a time; you can always trim off additional hair later. As you work, comb the hair frequently back into the style that you are cutting.

BEST TECHNIQUE

Tips for trimming hair on the various parts of your face and head. (guide only)

TO THIN AND TAPER THE BEARD/MOUSTACHE

Refer Diagram 1

Follow these simple steps:

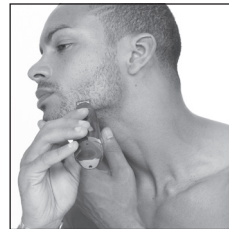


Diagram 1

- Before you begin, comb your hair in the direction in which it grows so that the hairs are at their maximum height and facing the same direction.
- Slide an Attachment Comb onto the 30mm Trimmer Attachment.
- Turn the Groomer ON.
- Place the flat top of the Attachment Comb against the skin.
- Slowly slide the groomer through the hair. Repeat from different directions as necessary.
- If hair builds up in the Attachment Comb during the trimming process, switch the Groomer off, pull the comb off the groomer and brush/rinse clean.

TO DEFINE THE BEARD/MOUSTACHE LINE

Refer Diagrams 2 & 3

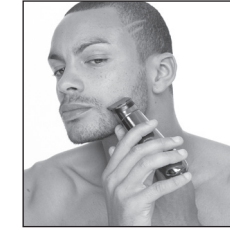


Diagram 2

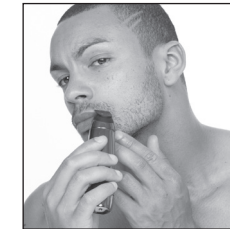


Diagram 3

- Use a small comb to comb the hairs straight for trimming.
- Hold the groomer with the 18mm Detail Trimming Attachment blade facing you.
- Start with the edge of the beard/moustache line and gently lower the Trimmer Blade onto your skin. Use motions toward the edge of the beard/moustache line to trim to the desired shape in the facial area and away from the beard in the neck area.

TO CUT SHORT HAIR STYLES

- Hairs should be dry and free of waxes or lotions before using the Groomer.
- Comb your hair in the direction in which it grows so that the hairs are at their maximum height and facing in the same direction.
- Place an attachment comb on the 30mm Trimmer Blade.
- Place the flat top of the Attachment Comb against the head.
- Slowly slide the groomer through the hair. Repeat from different directions if necessary.
- If hair builds up in the Attachment Comb during the trimming process, switch the unit off, pull the comb off the groomer and brush or rinse clean.

TO CREATE TRAMLINES INTO HEAD HAIR

Refer Diagram 4.

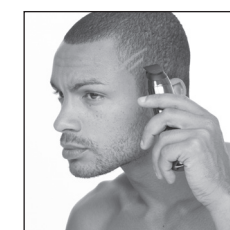


Diagram 4

- Attach the 30mm Trimmer Blade Attachment.
 - With the blade facing the area where you would like to start your tramline, gently lower it onto the head.
 - Move the groomer gently along your head to create the style you require.
- NB: For more precise designs, attach the 18mm Detail Trimmer Blade Attachment.

TRIMMING THE EDGE OF SIDEBURNS

- Using the 18mm Detail Trimmer Blade Attachment, hold the Groomer with the blade facing you.
- Start with the edge of the sideburn and with the cutting blades resting lightly against your skin, use motions towards the edge of the sideburn line to trim as required.

TRIMMING THE NAPE OF THE NECK

Refer Diagram 5

You will need a mirror for this operation if performing it alone.

- Before you begin, attach the 30mm Trimmer Blade Attachment.
- Use your fingers to lift the hair at the base of your head up off the neck. Your index finger should be covering the roots of the hairs that you are lifting to prevent accidental removal by the Groomer.
- Using your other hand, hold the groomer to the base of the neck with the cutting blade facing up and move the groomer up the length of the neck until the unit touches your finger covering the hair roots at the base of your head. Be sure to move the groomer slowly when performing this operation and to keep the hair roots at the base of the head out of the way of the groomer.



Diagram 5