



# **Digital Classroom Solution TRAINING GUIDE**

**A detailed user guide to Digital Classroom Systems provided by the 2008 DISD Bond Program**

# Table of Contents

		<u>Page</u>
<a href="#"><u>Digital Classroom Components</u></a>		3
<a href="#"><u>Dell S500WI Projector</u></a>		4
<a href="#"><u>Turning the Dell projector On/Off via Web Browser</u></a>	Steps 1 - 4	5
<a href="#"><u>How to configure your Whiteboard into an Interactive Board</u></a>	Steps 1-6	7
<a href="#"><u>Locate your projector IP address</u></a>	Step 3	8
<a href="#"><u>Turn on your Interactive pen</u></a>	Step 6	13
<a href="#"><u>Boxlight ProjectoWrite6</u></a>		14
<a href="#"><u>Top Cat Speaker</u></a>		15
<a href="#"><u>Classroom Audio Integration</u></a>		18
<a href="#"><u>How to operate the TopCat Audio System</u></a>	Steps 1-5	19
<a href="#"><u>Media Connector</u></a>		20
<a href="#"><u>Microphone</u></a>		21
<a href="#"><u>MimioView™ Document Camera</u></a>		30
<a href="#"><u>How to operate MimioView Document Camera</u></a>	Steps 1 - 3	26
<a href="#"><u>Mimio Hardware Reference Card</u></a>		29
<a href="#"><u>Software Reference Card</u></a>		30
<a href="#"><u>Digital Classroom Cart</u></a>		32
<a href="#"><u>Lenovo ThinkPad Laptop 14"</u></a>		34

# 5 DIGITAL CLASSROOM COMPONENTS

**Dell S500WI Interactive Ultra-Short Throw Projector**



**Boxlight ProjectoWrite6 Projector**



**DYMO MimioView Document Camera**



**LightSpeed TOPCAT Wireless Audio System**



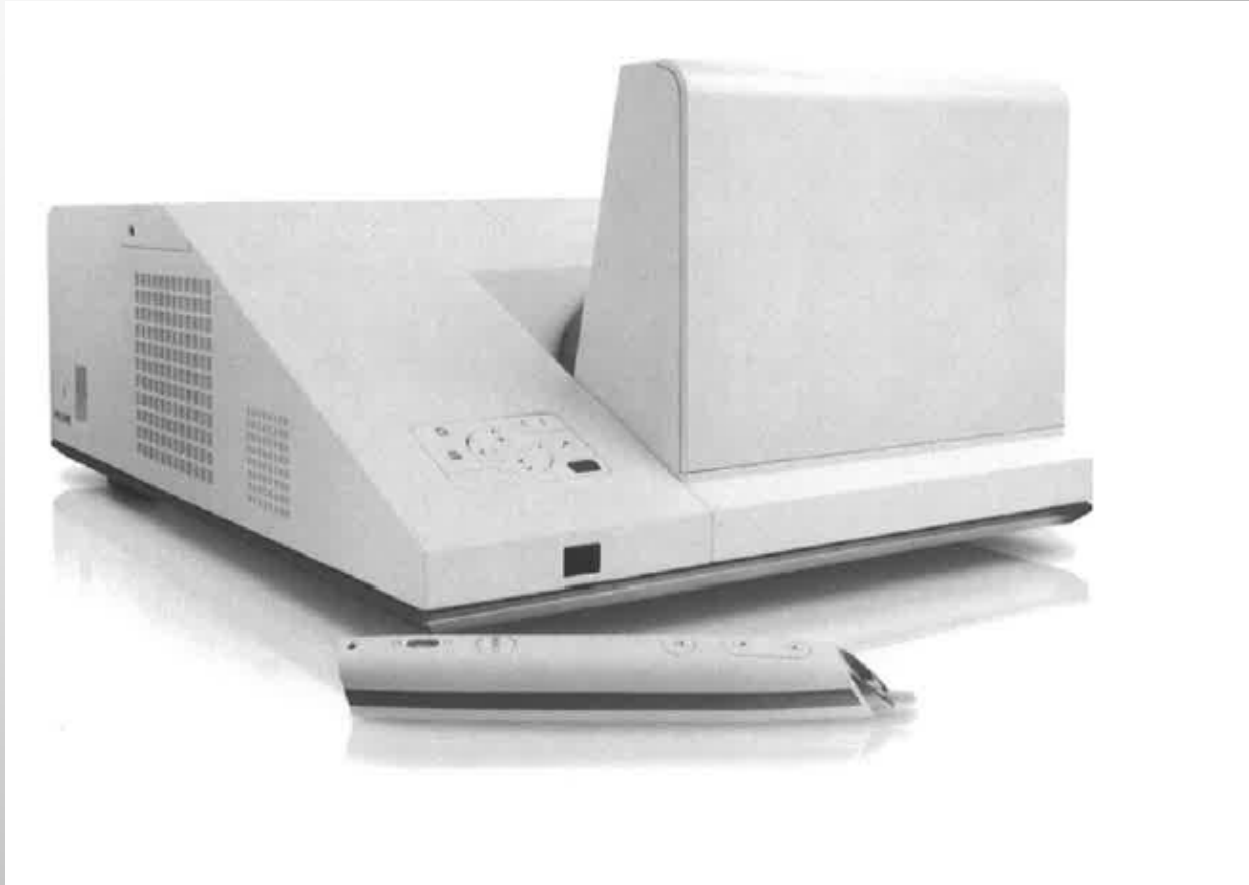
**Lenovo Thinkpad Edge 14 Notebook PC**



**Bretford AV Notebook & Projection Cart**



**If your room has the Dell S500WI Projector follow the instructions on pages 4 through 13.**



## **Dell S500WI**

The Dell S500WI projector was designed to improve the learning environment by projecting a sharp, crisp, clear picture of 720p HD resolution onto any surface; this presents an exceptional view to the targeting audience. This device includes an interactive pen which works like a combination of a mouse and stylus.



# Turning the Dell projector On/Off via Web Browser

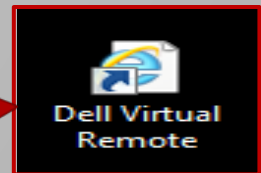
## Step 1:

Power on the laptop found on the Digital Classroom Cart and log in using your user name & password.

## Step 2:

Double click on the “Dell’s Virtual Remote” shortcut link on the desktop and your web browser would automatically open to the Dell S500wi’s projector menu window.

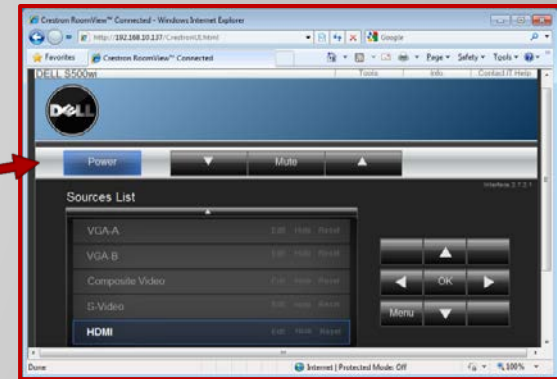
The icon on the right is how the shortcut appears on your desktop.



### Step 3:

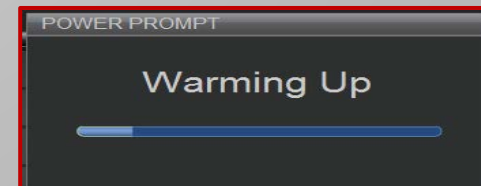
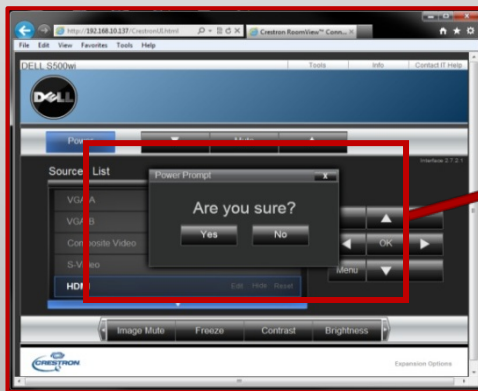
To turn the projector on or off, on the Dell S500wi projector menu, by clicking the “Power” button located near the top left corner of the window (as seen in the picture below) and then the “Power Prompt” window will open.

**Click the Power button**



### Step 4:

In the Power Prompt window, select yes or no depending if you want to switch the projector on or off, then the Power Prompt options window would change to Warming Up/Cooling Down.

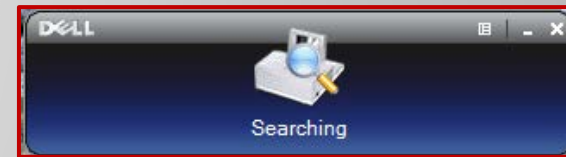
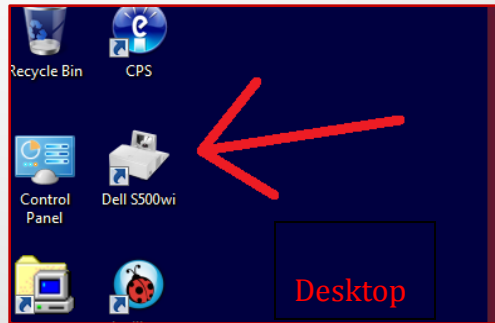


**Note:** Once the projector powers on, you can close or minimize the web browser for Dell S500wi.

# How to configure your Whiteboard into an Interactive Board

## Step 1:

Double click the “Dell S500WI” shortcut on your desktop. (See photo below) and the software will search for the projector in the room

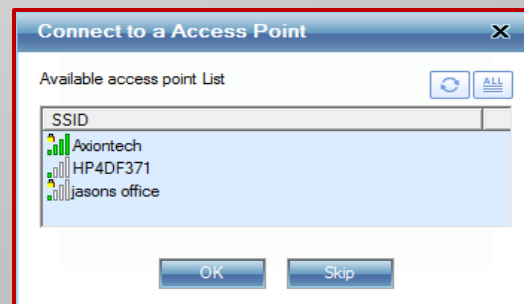


**Dell interactive software searching for the projector.**

## Step 2:

On the “Connect to an Access Point” window, click Skip.

Note: Depending on your school network, this window may not appear

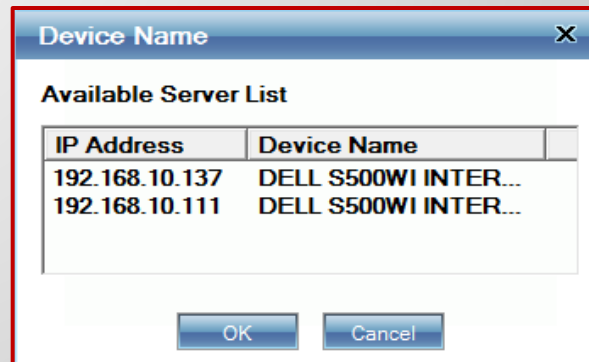




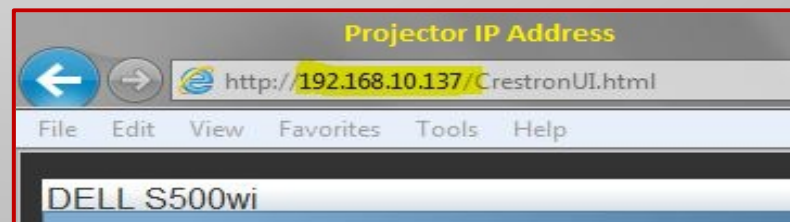
### Step 3:

Locate your projector IP address from the available server list, select your projector IP address and click ok.

(Skip this step if the “Dell S500WI” software identifies your Projector IP Address as shown in step 5)



**Note:** To find your Projector IP Address, double-click the “Dell Virtual Remote” shortcut on your desktop and look in address bar “Example: The Projector IP Address is 192.168.10.137”



## Step 4:

On the “**SSID: Dell S500WI INTERACTIVE**” window, click the “Interactive Pen only”. A green check mark will appear. **The login Code is not necessary for interactivity. Click OK.**



The screenshot shows a login window titled "SSID: DELL S500WI INTERACTIVE". It contains an information icon on the left. The fields are: IP Address: 192 . 168 . 10 . 137; User Name: user; Login Code: (empty). Below the fields is a checked checkbox labeled "Interactive Pen only". At the bottom are "OK" and "Cancel" buttons.

IP Address Input



A close-up of the checkbox labeled "Interactive Pen only". The checkbox is currently unchecked.

Interactive Pen Check

## Step 5:

The Dell Interactivity window will appear. **Do not close this window.** Closing this window will disable the interactive pen and you will have to repeat steps 2 through 4 to re-enable it. This window can be minimized at any time without affecting the interactive pen. To temporarily disable the interactive pen, click the stop button (shown below as a square in a circle). To enable the pen again, click the play button (shown below as a triangle in a rectangle).



**Play Button:**  
Activate Interactive Pen

**Stop Button:**  
Stop Interactive Pen

## Overview:

- **Slim, rechargeable S500wi Projector Pen from Dell™ allows you to write, draw, or apply it as a mouse on virtually all software applications and smooth surfaces.**
- **Designed to deliver not just interactivity but off-surface interactivity of up to 9m (29.5 feet), the Dell S500wi projector pen will allow you the freedom to move off the board and yet remain interactive.**
- **Embedded with a Li-ion battery, this slim and rechargeable interactive pen comes with 3-button functionality that puts swift control into the palm of your hand.**
- **Cleverly designed for the Dell S500wi, this interactive pen sports a sleek design and functions as a mouse, a drawing tool, or a writing assistant at your command.**
- **Use this pen in concert with the Dell S500wi and its interactive projection software and enjoy both on- and off-surface (up to 9m) interactivity.**
- **Comes with a wrist strap which you can loop to the bottom-end slot of the handy device to avoid drop and damage of pen.**
- **You can now inject fun into mundane lessons, help promote active learning, and spark renewed interest in the learning journey.**



## Step 6: Turn on your Interactive pen.

### Front view



#### Mouse Buttons

Top is left click  
Bottom is right click

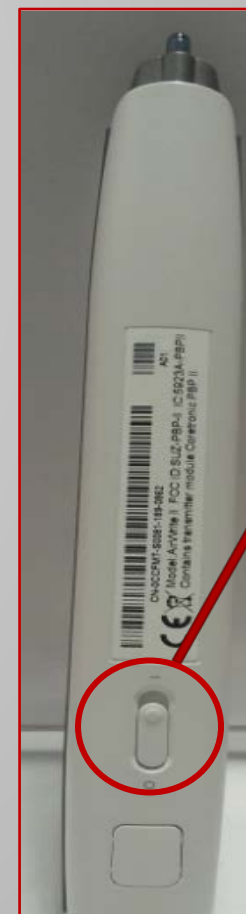
Battery Charge  
indicator



### Features

- Intuitive on- and off-surface (up to 9m) interactivity
- 3-button functionality puts swift control into the palm of your hands
- Embedded Li-ion battery helps render easy recharge via laptop/desktop using the mini USB cable
- Lanyard loop around pen makes usage convenient

### Back view



On/Off switch  
for  
Interactive pen

If your room has the  
**Boxlight ProjectoWrite6 Projector**

Click here for instructions:

[Boxlight Interactive setup123 Updated w-table of contents.pdf](#)



## **TOPCAT Speaker**

The TOPCAT speaker is designed to improve the learning environment by distributing high quality audio evenly with wide sound distribution for up to 1200 square feet. Each TOPCAT includes a small microphone for hands-free voice clarity with single touch volume control. This device will help put less voice strain on the instructor and ensure every student, even some with hearing impairments, may listen without difficulty.





# One of three systems found in your classroom



**Ceiling Mount**



**Mobile Model**



**Wall Mount**

Increasing audibility in the classroom is a no brainer. Four traditional cone speakers strategically placed will easily fill the room with sound. Use two cone speakers and turn up the volume a little more and audibility will be satisfactory. This is a fine solution if all you care about is making sure media related audio is being heard.

**But what about speech intelligibility cues from teachers and peers?**



A teacher's voice can generally be heard just fine at almost any point in the classroom through a traditional cone speaker system.

## **The problem lies in providing adequate intelligibility.**

Audibility is essentially static, meaning that once you set the volume it won't vary significantly as you move about the room. It is measurable and predictable.

## **Intelligibility is dynamic.**

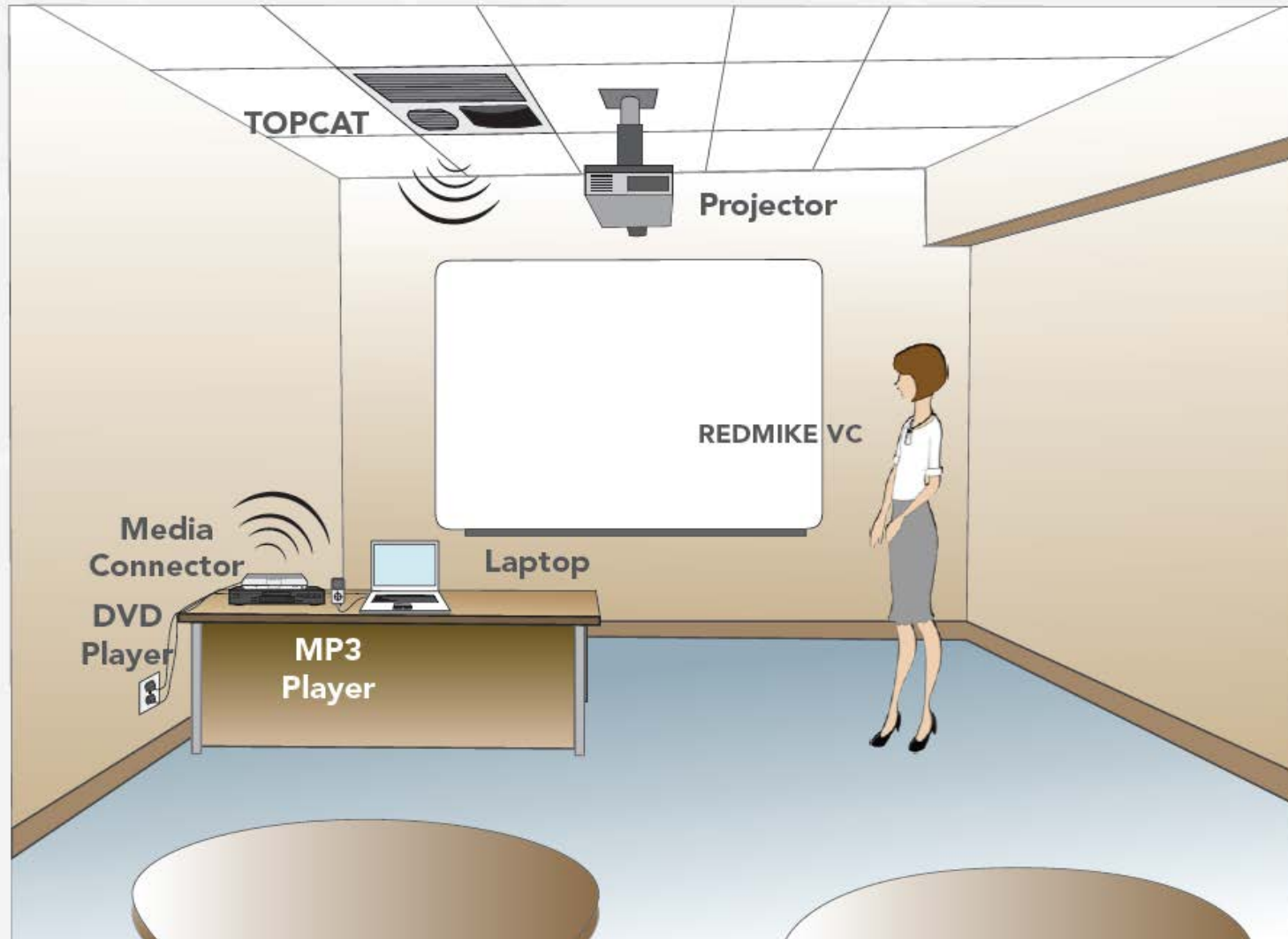
Teachers move around the room, and may turn to face the interactive whiteboard, for example (reducing visual cues as well).

Student generated noise levels change dramatically in an active classroom.

Other factors impacting speech intelligibility include projector noise, HVAC noise, and traffic noise and are pervasive in modern classrooms.

**You will find that this system eliminates all of the above!**

# Classroom Audio Integration



# How to operate the TopCat Audio System

## Step 1:

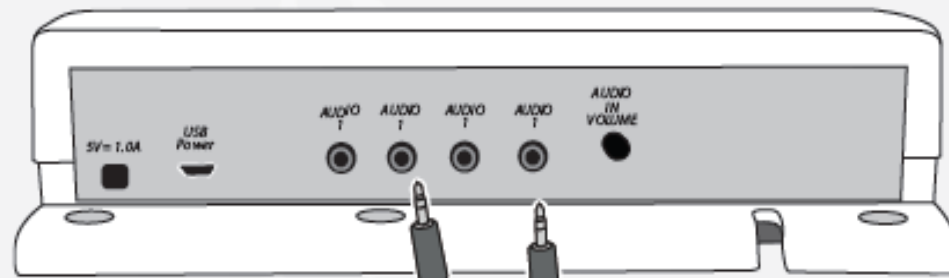
To turn on the TOPCAT you will have to press the **USB POWER** button on the Left hand side of the Media Connector.



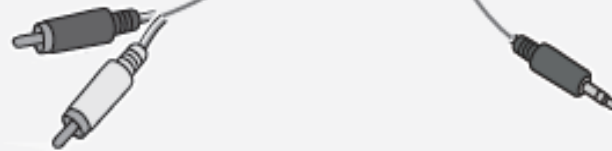
The **Media Connector** is located on the second shelf of the Digital Media Cart.



## Media Connector



**DVD Player**



**Laptop**

## Step 2:

Inside the cabinet of the Digital Classroom Cart you will find the Microphone on its charging dock. Remove the microphone from the Charging Cradle.



**Cradle Charger**



**Back view of  
Cradle Charger**

### **Cradle Charger Indicator Lights:**

**Green**

Microphone is fully charged.

**Red**

Microphone is charging.

**Blinking Red**

Charging error.

### Step 3:

After taking the microphone from the Charging Cradle, locate the power button on the left side of the microphone with the light indicator facing you.

#### Front view of Microphone

Light Indicator



Power Button

## Step 4:

After powering on the microphone, you can adjust the volume settings on the back of it if necessary.



Volume  
Control



Back View of Microphone

**Left click button -  
decrease the volume**

**Right click button  
- increase volume**



## Step 5:

You need to wear the microphone's lanyard around your neck and adjust to your collarbone for proper operational use.



### Important to Remember

- Test the microphone and adjust volume setting if necessary **(Refer back to step 4 for volume setting.)**
- Make sure you are not wearing items that could interfere with the microphone: jewelry, lanyards', etc.
- The microphone necklace is designed to keep the microphone from flipping or turning when you move.
- Make sure you have the microphone centered in the flat area of the necklace.
- Windows in your classroom could interfere with the signal. If you find that the audio is dropping sound, make sure you are positioned in such a way that there is no obstruction between the microphone and the ceiling mounted speaker systems.



## MimioView™ Document Camera

The MimioView™ document camera is expressly designed for interactive teaching. The system lets you capture and instantly share live video and images of dimensional objects and flat documents. MimioView technology integrates automatically with the MimioTeach™ interactive system and MimioStudio™ software, and is powered by a USB cable connected to your computer.



# How to operate MimioView Document Camera

Read the [Mimio Hardware Reference Card](#) and [Software Reference Card](#) before using the MimioView Document Camera. The MimioStudio software include “**MimioStudio Notebook**” and “**MimioStudio Gradebook**”.

## **Step 1:**

Ensure the Document Camera USB is connected to a Laptop’s USB port and receiving power.

**Note:** The Status Light indicator has to be a solid green in order to operate the document camera. If it is flashing green, the MimioStudio software is not installed or the Laptop is not recognizing the camera. Unplug the camera USB cable and plug it back in to help fix this problem.

## Step 2:

A quick way to access the “MimioStudio View” program is by pressing the “View button” located on the base of the camera.

### MimioView Document Camera



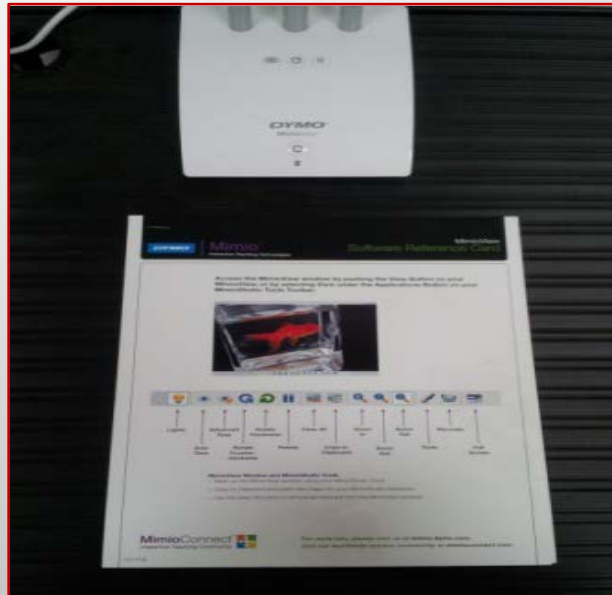
- Auto focus
- Rotate
- Pause image

Status Light

### **Step 3:**

You can place any reading documents, pictures, worksheets, etc. under the camera so the Camera can stream the material onto the Laptop.

### **“Examples of how to place any material below the Camera”**

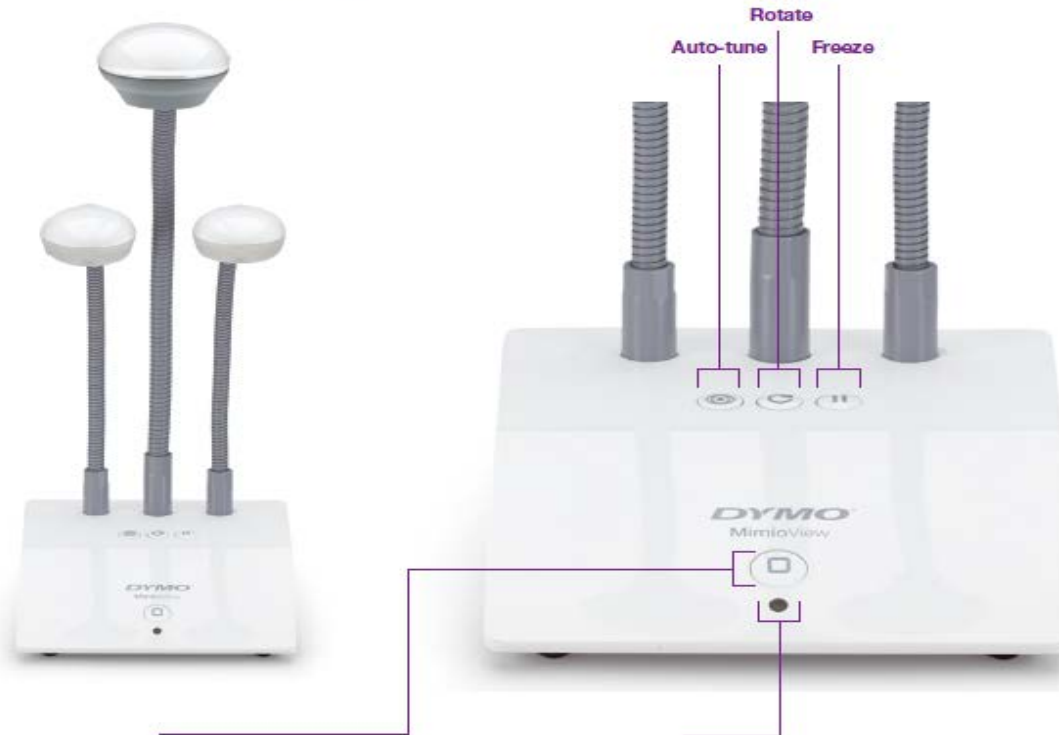


**Vertical View of Document**



**Horizontal View of Document**

The MimioView™ document camera works seamlessly with MimioStudio™ software to display documents, 3-D objects, and microscope slides for your entire class to view. You can use the MimioView camera to display still images or live video.



**View Button**

Press to open the MimioStudio View window and turn the camera and lights on.

Press again to close the MimioStudio View window and turn the camera and lights off.

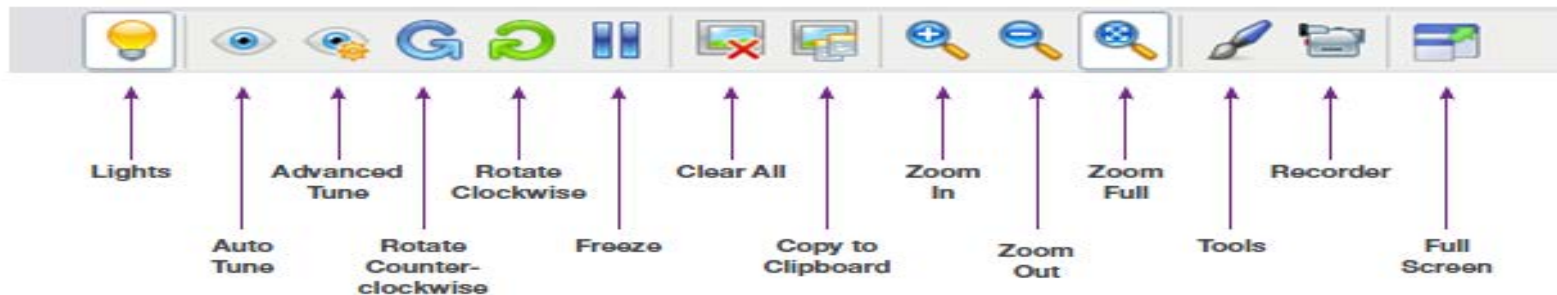
**Status Lights**

**Off:** Not receiving power; USB cable is not connected or computer is turned off.

**Solid Green:** MimioView is connected and receiving power; MimioStudio software is running.

**Flashing Green:** MimioView is connected and receiving power; MimioStudio software is not running.

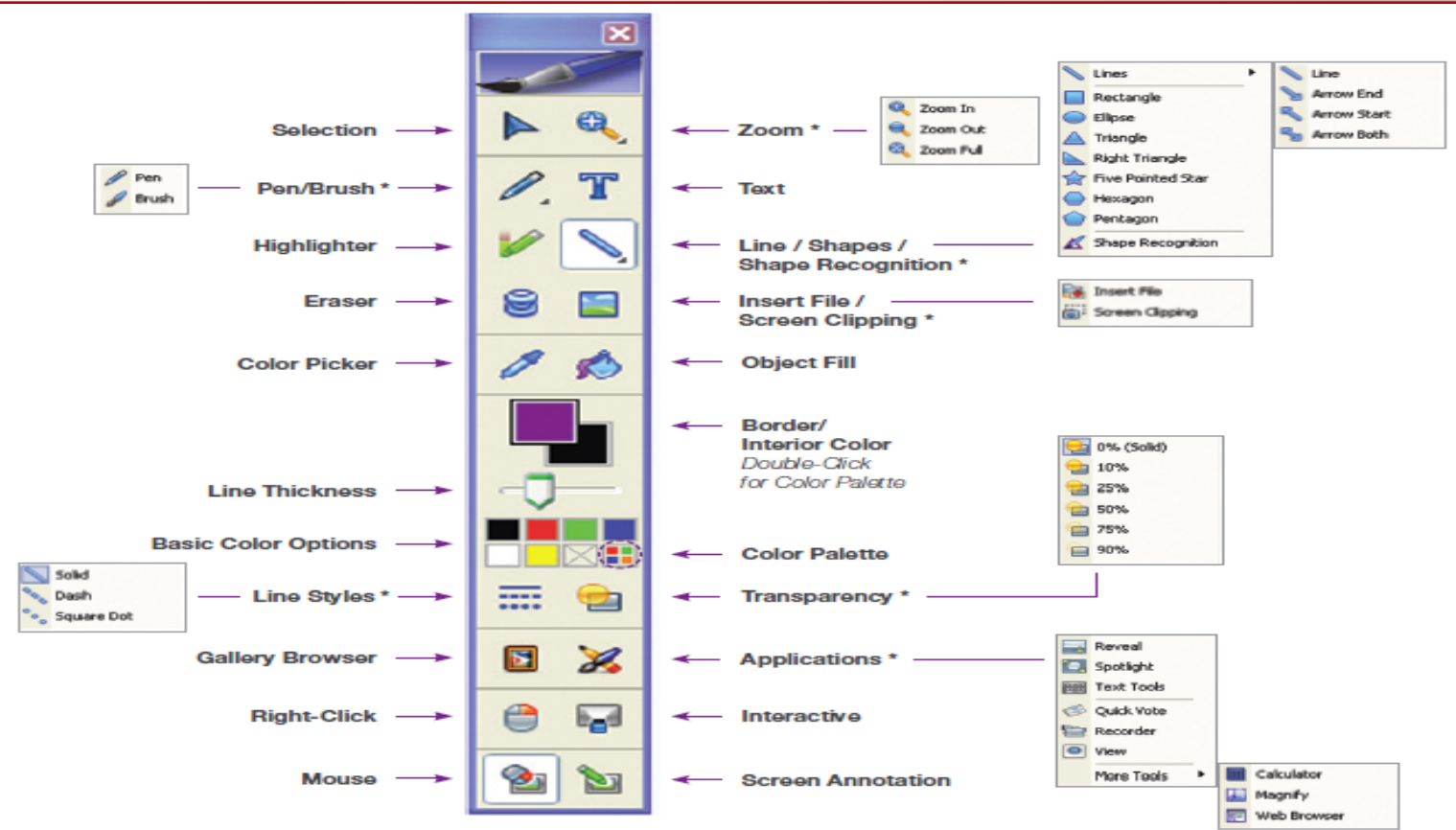
Access the MimioView window by pushing the View Button on your MimioView, or by selecting View under the Applications Button on your MimioStudio Tools Toolbar.



**MimioView Window and MimioStudio Tools:**

- + Mark up the MimioView window using your MimioStudio Tools.
- + Copy to Clipboard and paste the image into your MimioStudio Notebook.
- + Use the Clear All button to remove all markups from the MimioView window.





\* Right-Click or hold Left-Click to see the flyout menus.

## Digital Classroom Cart

The digital classroom cart has a variety of learning tools for today's modern teachers to teach the students.

Inside these customized carts are the following; Mimioview Document Camera, Lenovo laptop, TOPCAT Media Connector, small microphone for TOPCAT (with its charger), and the Interactive pen.





## FEATURES

- Affordable multimedia presentation cart incorporates your laptop, data projector, document camera, DVD player, scanner and more all on one compact platform.
- Features a 3-height capability, from 34"-42"h in 4" increments and is easily adjusted by resetting four leg screws.
- Two large 14"d shelves pull out from opposite sides on smooth rolling glides and allows you to easily integrate your notebook computer with projectors and other equipment.
- Pull out shelf supports are arc welded to the leg supports for a strong and secure platform to support equipment.
- Durable all-steel construction with black powder paint finish feature legs welded to the shelves so minimal assembly time is required.
- Includes a roomy lockable storage cabinet with two keys and a rear grommet hole for cord management.
- Rolls smoothly on 4" "Quiet Glide" casters, 2 locking.
- Die-pressed shelves have a 1/4" lip to prevent equipment from accidentally sliding off while in transport.
- Top shelf includes a ribbed rubber mat.
- Recommended for use with a projector, document camera and notebook computer.
- 6-outlet electrical unit available with built-in cord winder and 20' extension cord lets you set up anywhere in the room and still reach an electrical outlet.

## **Lenovo ThinkPad Laptop 14”**

**A minimum of**

- Intel/AMD processor Dual Core
- 4GB of RAM
- 250GB of Drive
- HDMI Port, 3 USB Ports, Ethernet (RJ-45) Port.

