

USB 2.0 VGA Adapter

USER MANUAL

CONTENTS

INTRODUCTION	3
FEATURES	3
SYSTEM REQUIREMENT	3
PACKAGE CONTENTS	3
SUPPORTED COMMON DISPLAY RESOLUTION:	4
DEVICE INSTALLATION ON WINDOWS 2000/XP SYSTEM	5
DEVICE DRIVER INSTALLATION	5
INSTALLATION OF SINGLE USB 2.0 VGA ADAPTER	8
INSTALLATION OF MULTIPLE USB 2.0 VGA ADAPTERS	8
VERIFYING DEVICE DRIVER INSTALLATION	11
DEVICE DRIVER UN-INSTALLATION	13
DEVICE INSTALLATION ON WINDOWS VISTA SYSTEM	14
DEVICE DRIVER INSTALLATION	14
INSTALLATION OF SINGLE USB 2.0 VGA ADAPTER	16
INSTALLATION OF MULTIPLE USB 2.0 VGA ADAPTER	16
VERIFYING DEVICE DRIVER INSTALLATION	17
DEVICE DRIVER UN-INSTALLATION	19
FUNCTION DESCRIPTION	20
“Primary” Mode	21
“Extended” Mode (Default)	21
“Mirror” Mode	21
“OFF” Mode	22
Rotation	22
Q&A	23
TROUBLESHOOTING TIPS	24
REGULATORY COMPLIANCE	25

INTRODUCTION

Thank you for purchasing the **USB 2.0 VGA Adapter**. The USB 2.0 VGA Adapter enables you to connect one or multiple display devices (CRT/LCD monitor, projector) to your desktop or notebook PC. The connected display can act as mirrored or extended desktop of the main display on your PC. The flexibility of the common USB 2.0 technology saves the need to open the computer or struggling with compatibility issues related to the VGA card.

FEATURES

- ◆ Support display resolution up to 1920 x 1200
- ◆ Support the multiple display devices on one PC
- ◆ Multi graphics display modes – primary, extended, mirror, rotation
- ◆ Plug-and-Play USB connectivity
- ◆ USB 2.0 compliant



SYSTEM REQUIREMENT

- ◆ 1.0GHz or higher processor
Pentium 4 / Celeron Family, AMD K6 / Athlon / Duron Family.
- ◆ 512MB memory or higher (higher memory recommended for optimal performance)
- ◆ Available USB 2.0 port
- ◆ Windows 2000 SP4 / Windows XP SP2 / Windows Vista

PACKAGE CONTENTS

- ◆ USB 2.0 VGA Adapter
- ◆ CD (User Manual, Driver and Utility)
- ◆ User manual

SUPPORTED COMMON DISPLAY RESOLUTION:

Aspect Ratio	Resolution		
16:10	1920 * 1200	N/A	16
16:9	1920 * 1080	N/A	16
16:10	1680 * 1050	16	16,32
16:10	1440 * 900	16,32	16,32
16:10	1280 * 800	16,32	16,32
15:9	1280 * 768	16,32	16,32
5:4	1280 * 1024	16,32	16,32
4:3	1600 * 1200	16	16,32
4:3	1280 * 960	16,32	16,32
4:3	1152 * 864	16,32	16,32
4:3	1024 * 768	16,32	16,32
4:3	800 * 600	16,32	16,32

DEVICE INSTALLATION ON WINDOWS 2000/XP SYSTEM

DEVICE DRIVER INSTALLATION

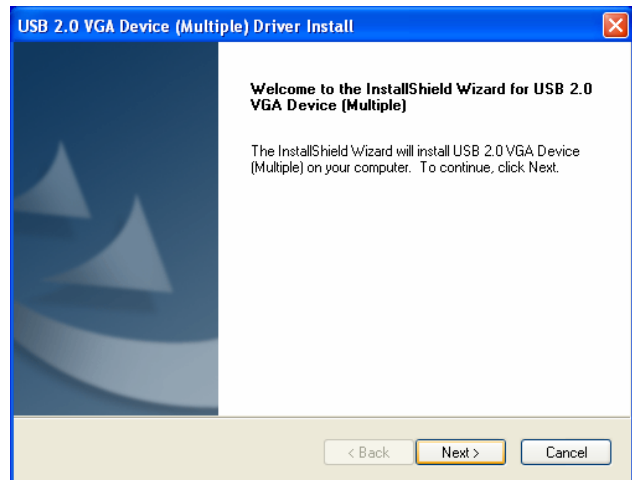
Installing the device driver enables your computer's operating system to recognize the USB 2.0 VGA Adapter once it's connected. Please check your operating system and refer to the appropriate installation procedure to begin installing the device driver. Please make sure the USB 2.0 VGA Adapter is **unplugged** from your PC or Notebook before executing the setup program. This section illustrates the simple device driver installation procedure for computer running Windows 2000 / XP operating system.

Step 1.

Insert the Driver CD into the CD-ROM drive; the setup program should be launched automatically. If setup program does not begin automatically, click Start, Run and double click "**D:\Setup.exe**" (where D: is the path of your CD-ROM drive).

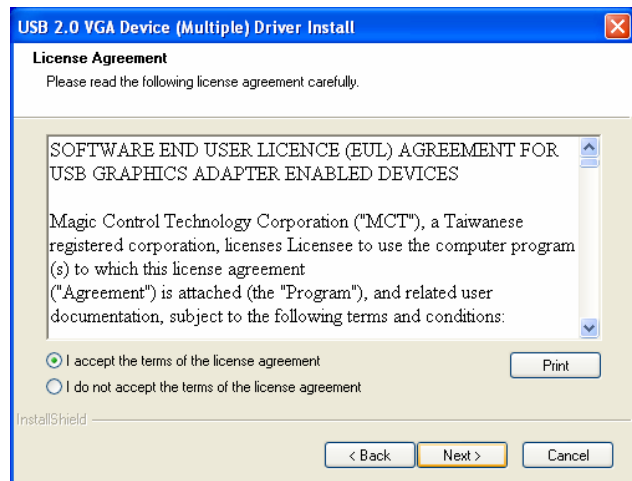
Step 2.

Driver Installation Wizard, click "**Next**" to continue.



Step 3.

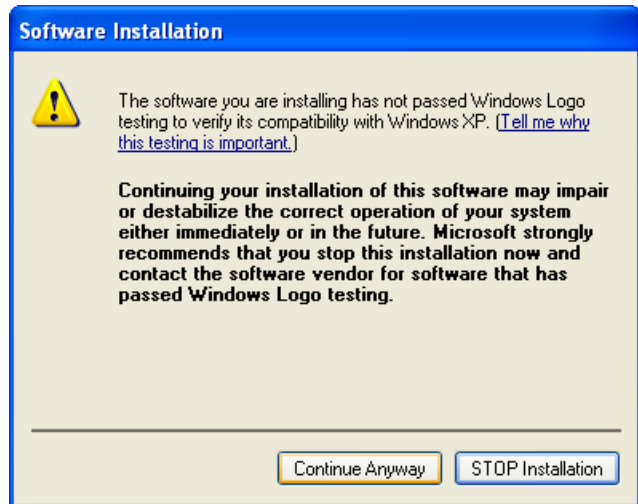
License Agreement; please read it and select "**I accept the terms of the license agreement.**" Click "**Next**" to accept the License Agreement.



Step 4.

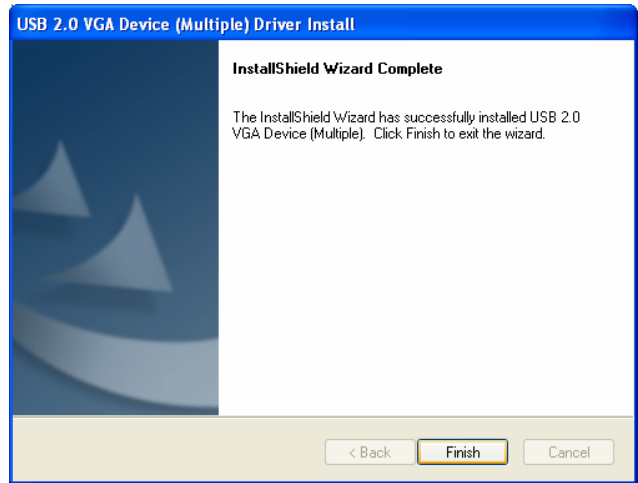
The Microsoft Software Installation Certificate warning dialogue box will be displayed under Windows XP OS many times. Please select “**Continue Anyway**” to continue with the device driver installation. It will not affect the device driver installation and the device usage.

- * The Microsoft Certificate warning dialogue boxes will not appear when the driver receives the WHQL certification.



Step 5.

Click “**Finish**” to exit the Driver Wizard.



Step 6.

Connect the external display device (monitor/projector) to the VGA (DB15) connector of **USB 2.0 VGA Adapter** and switch it on.

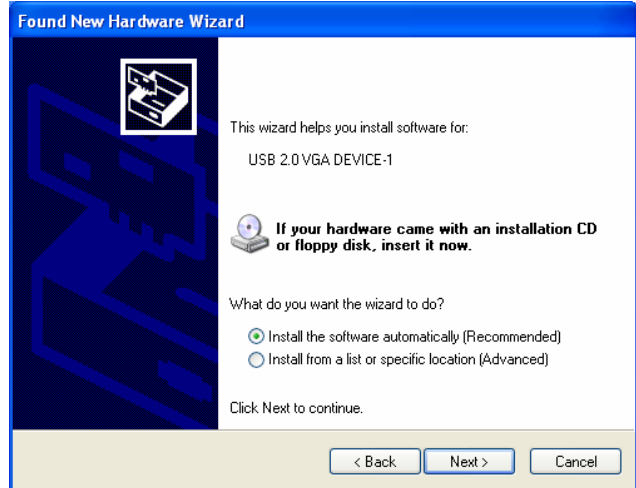
Step 7.

Plug the USB 2.0 VGA Adapter into an available USB 2.0 port of your PC or Notebook. Then, it will show the Hardware Installation Wizard, please select “**No, not this time**” and click “**Next**” to continue.



Step 8.

Select “**Install the software automatically (Recommended)**”. Click “**Next**” to continue.



Step 9.

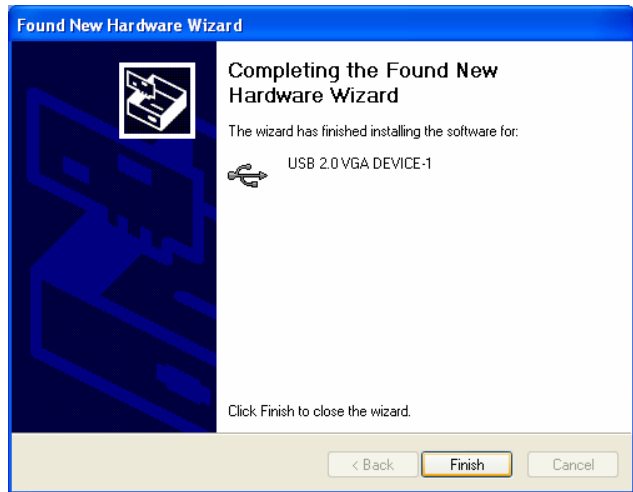
The Microsoft Hardware Installation Certificate warning dialogue box might be shown*. Please select “**Continue Anyway**” to continue with the device driver installation. It will not affect the device driver installation and the device usage.

* The Microsoft Certificate warning dialogue boxes will not appear when the driver receives the WHQL certification.



Step 10.

Click “Finish” to exit the Hardware Wizard of USB 2.0 VGA Adapter.

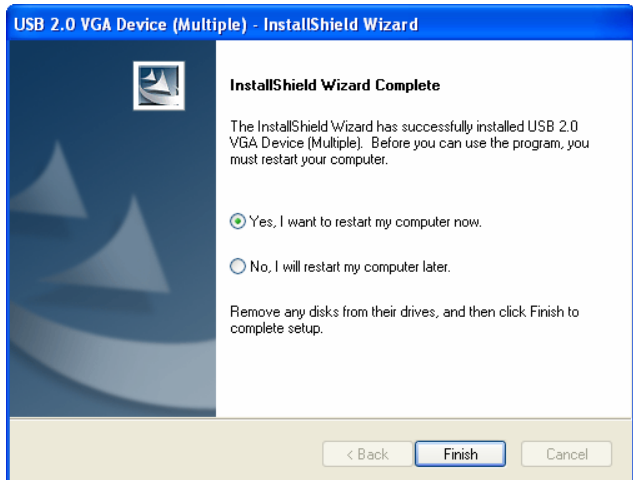


Step 11a.

INSTALLATION OF SINGLE USB 2.0 VGA ADAPTER

Please select “**Yes, I want to restart my computer now.**” and click “**Finish**” to complete the driver installation.

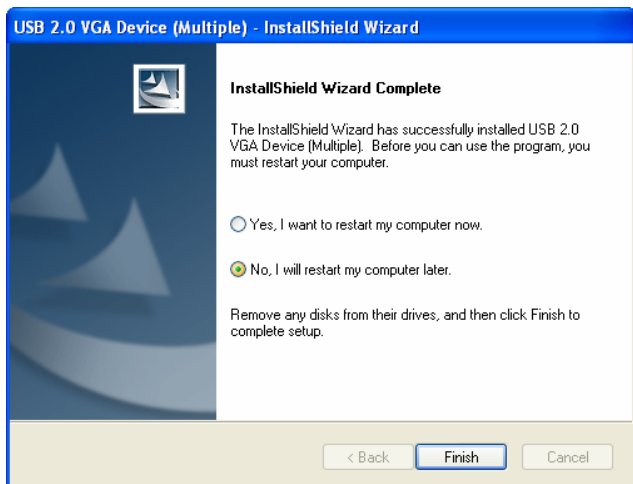
After reboot the computer, the extended display will be shown on the 2nd display device.



Step 11b.

INSTALLATION OF MULTIPLE USB 2.0 VGA ADAPTER

- a. Please select “**No, I will restart my computer later.**” and click “**Finish**” to continue the installation of next USB 2.0 VGA Adapter.

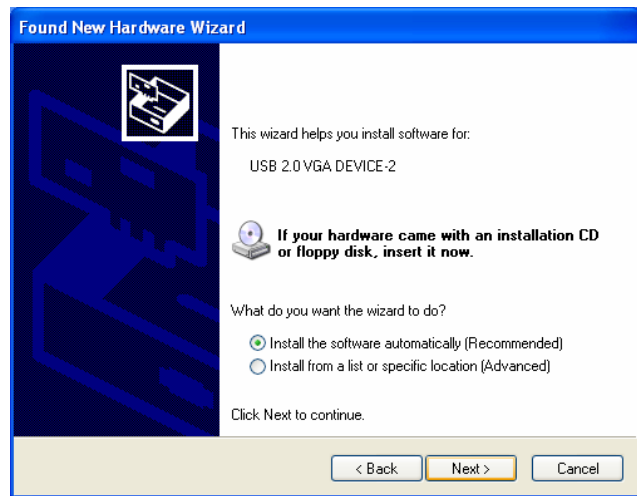


b. Connect another display device to the VGA (DB15) connector of the next USB 2.0 VGA Adapter and switch it on.

c. Plug the USB 2.0 VGA Adapter into next available USB 2.0 port of your PC or Notebook. It will appear the Hardware Installation Wizard, please select “No, not this time” and click “Next” to continue.



d. Select “Install the software automatically (Recommended)” and click “Next” to continue.



e. The Microsoft Hardware Installation Certificate warning dialogue box might be shown*. Please select “Continue Anyway” to continue with the device driver installation. It will not affect the device driver installation and the device usage.

* The Microsoft Certificate warning dialogue boxes will not appear when the driver receives the WHQL certification.

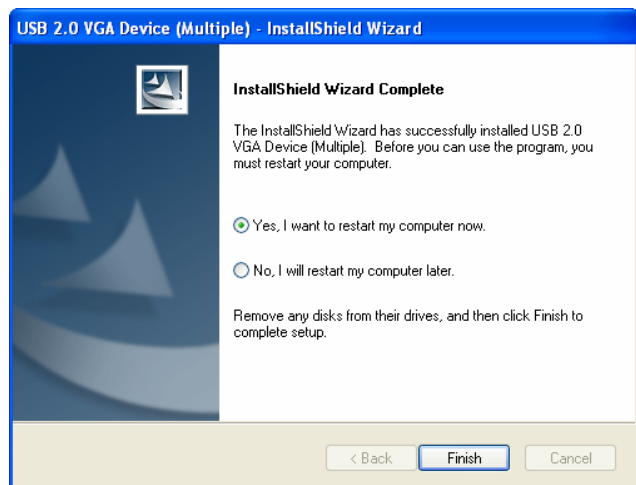


- f. Click “Finish” to exit the Hardware Wizard of 2nd USB 2.0 VGA Adapter.



- g. If you wish to install additional USB 2.0 VGA Adapter, please follow the procedure **a~ f** again.
- h. Otherwise, please select “**Yes, I want to restart my computer now.**” and click “**Finish**” to complete the driver installation.

After reboot the computer, the extended display will be shown on the display device.



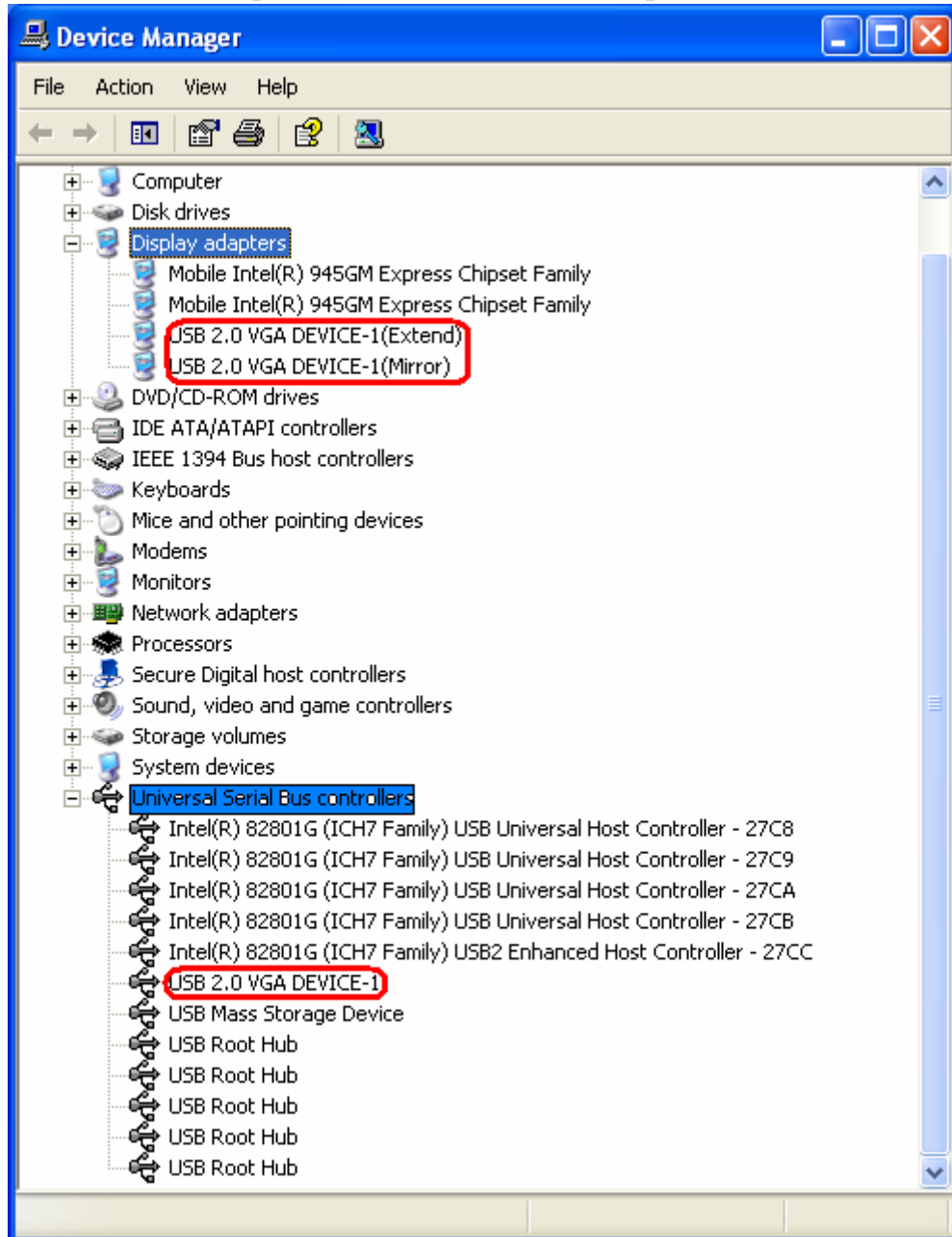
Please note that you can install up to six USB 2.0 VGA Adapter on one PC at the same time; in other words, maximum six external display devices can be connected to one PC.

VERIFYING DEVICE DRIVER INSTALLATION

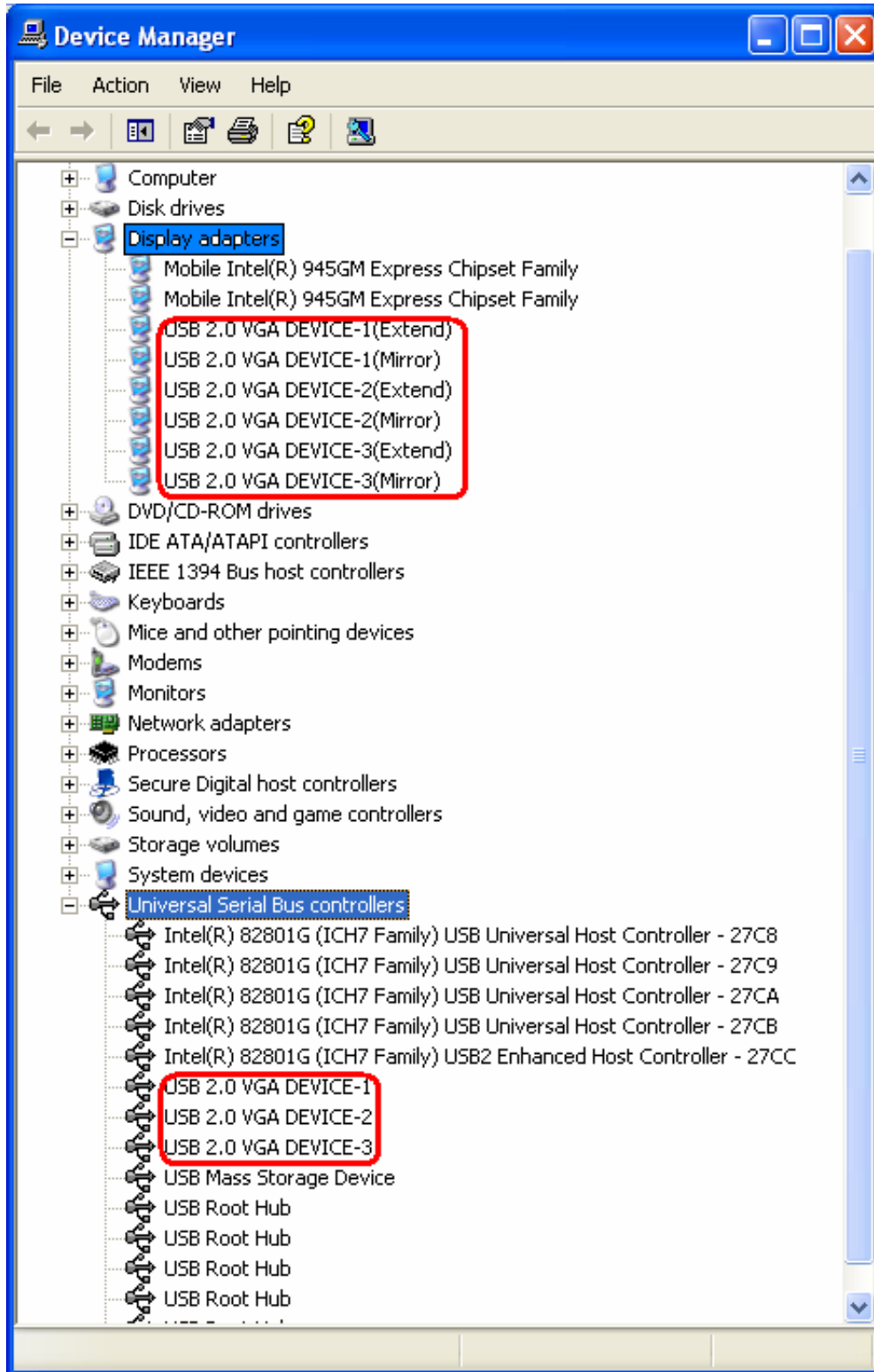
The following procedure allows you to verify the device driver installation.

Please right click “My Computer” → “Properties” → “Hardware” → “Device Manager”. Please double click “**Display adapters**”, and “**Universal Serial Bus controllers**”.

Single USB 2.0 VGA Adapter installation on the computer:



Multiple USB 2.0 VGA Adapter installation on the computer:



DEVICE DRIVER UN-INSTALLATION

The following procedure allows you to perform un-installation of the USB 2.0 VGA Adapter's device driver. Please make sure the USB 2.0 VGA Adapter is **unplugged** to your PC or Notebook before executing the device driver un-installation program.

Step 1.

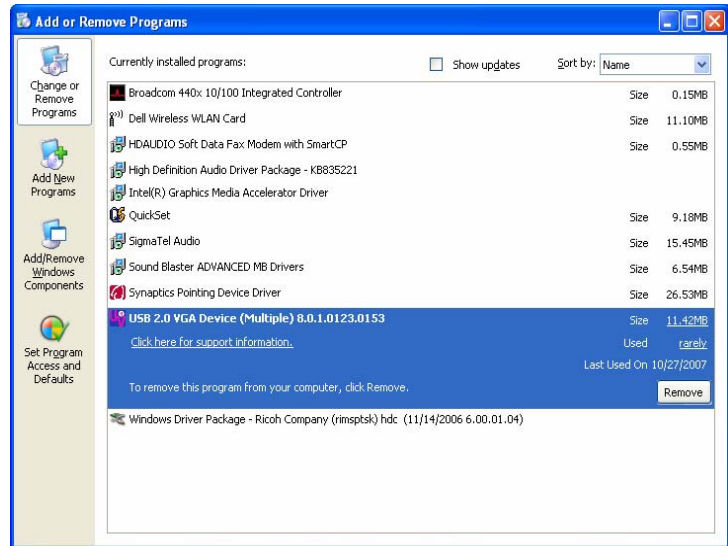
Start menu:

Click “Start” → “Control Panel” → “Add or Remove Programs”.

Classic start menu:

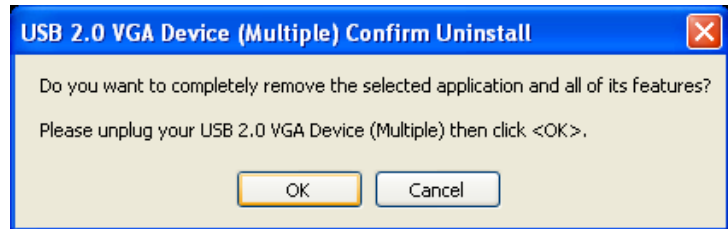
Click “Start” → “Settings” → “Control Panel” → “Add or Remove Programs”.

Select “USB 2.0 VGA Device (Multiple) driver version no.” item. Click “Remove” button.



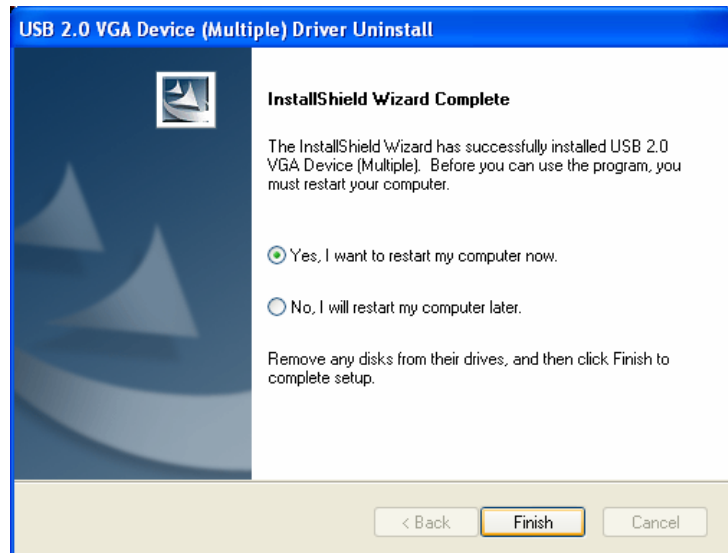
Step 2.

Unplug the USB 2.0 VGA Adapter and click “OK” to continue.



Step 3.

Select “Yes, I want to restart my computer now” and click “Finish” to reboot. After reboot, you will complete the driver un-installation.



DEVICE INSTALLATION ON WINDOWS VISTA SYSTEM

DEVICE DRIVER INSTALLATION

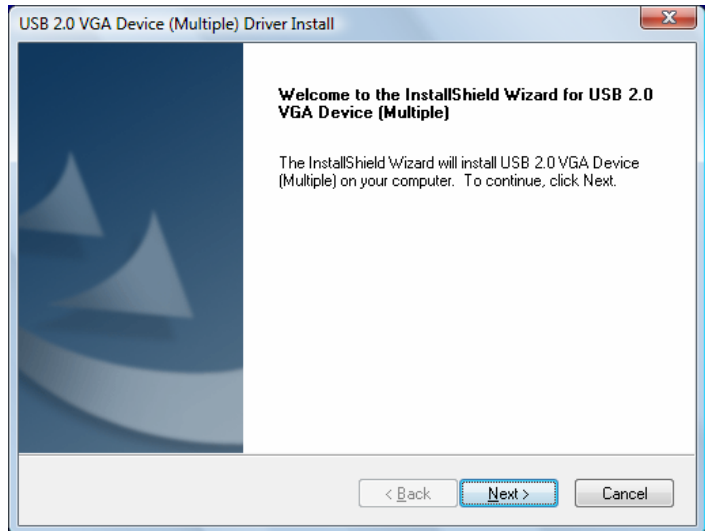
Installing the device driver enables your computer’s operating system to recognize the adapter once it’s connected. Please check your operating system and refer to the appropriate installation procedure to begin installing the device driver. Please make sure the USB 2.0 VGA Adapter is **unplugged** from your PC or Notebook before executing the setup program. This section illustrates the simple device driver installation procedure for computer running Windows Vista operating system.

Step 1.

Insert the Driver CD into the CD-ROM drive; the setup program should be launched automatically. If setup program does not begin automatically, click Start, Run and double click “D:\Setup.exe” (where D: is the path of your CD-ROM drive).

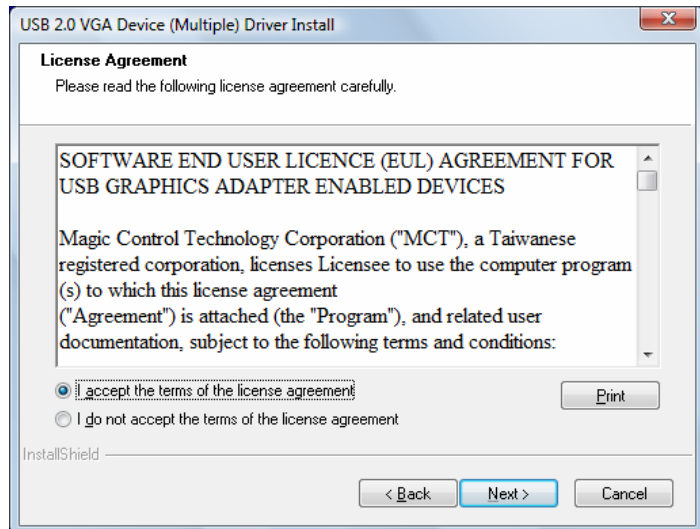
Step 2.

Driver Installation Wizard, click “Next” to continue.



Step 3.

License Agreement; please review it and check “*I accept the terms of the license agreement.*” Click “Next” to accept the License Agreement.



Step 4.

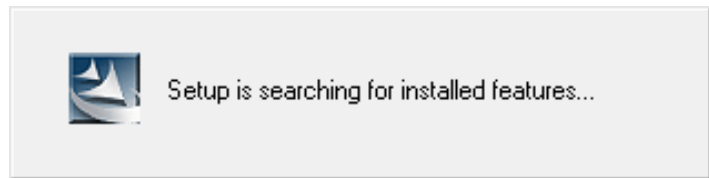
It will show the Windows Security warning dialogue box under Windows Vista, it will not affect the device driver installation and usage the device. Please select *“Always trust software from Magic Control Technology Corp.”*, then click **“Install”** to continue.



* This screen sheet may not appear when the driver has got the WHQL.

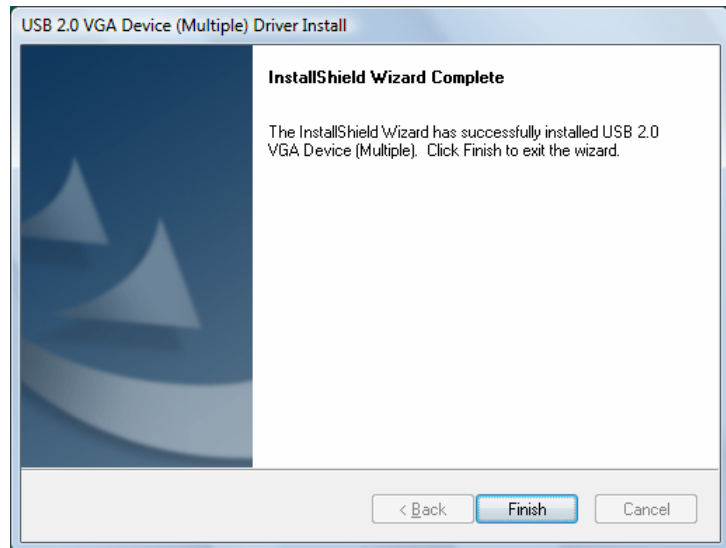
Step 5.

Setup is searching for installed features... Normally, it will take around 2~3 minutes during the period of time.



Step 6.

Driver Installation Wizard, click **“Finish”** to continue.



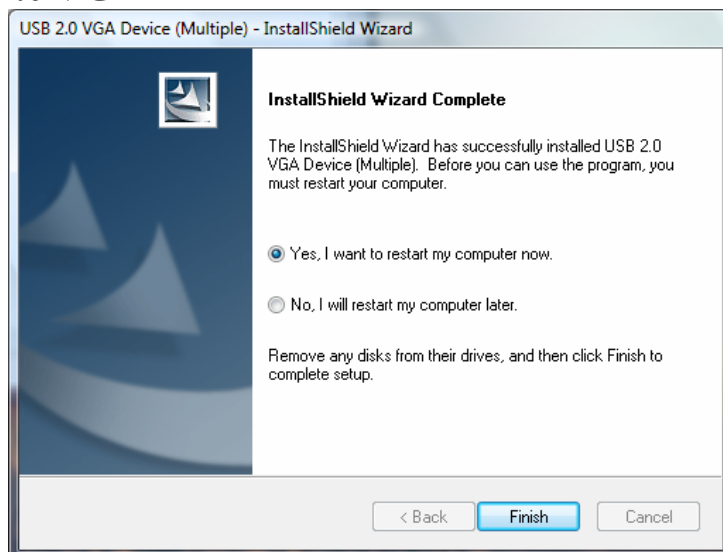
Step 7.

Connect the external display device (monitor/projector) to the VGA (DB15) connector of **USB 2.0 VGA Adapter** and switch it on. Then, plug the **USB 2.0 VGA Adapter** into an available USB 2.0 port of your PC or Notebook.

INSTALLATION OF SINGLE USB 2.0 VGA ADAPTER

Please select “*Yes, I want to restart my computer now.*” and click “**Finish**” to complete the driver installation.

After reboot the computer, you would see the extend display on the 2nd display device.



INSTALLATION OF MULTIPLE USB 2.0 VGA ADAPTER

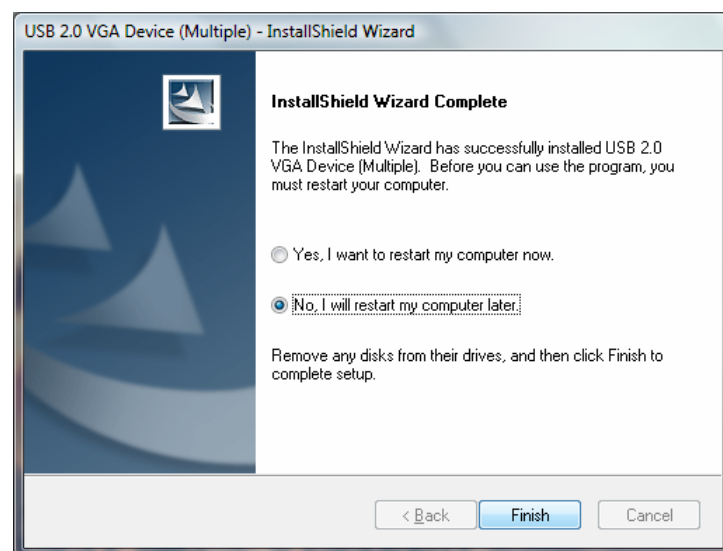
a. Please select “*No, I will restart my computer later.*” And click “**Finish**” to continue the next installation.

b. Connect another external display device to the VGA (DB15) connector of next USB 2.0 VGA Adapter and switch it on.

c. Plug the USB 2.0 VGA Adapter into an available USB 2.0 port of your PC. The driver installation will be proceeding automatically.

d. If you wish to install additional USB 2.0 VGA Adapter, please follow the procedure **a~ c.**

e. Otherwise, please select “*Yes, I want to restart my computer now.*” and click “**Finish**” to complete the driver installation. After reboot the computer, the extended display will be shown on the 2nd display device.



Please note that you can install up to six USB 2.0 VGA Adapter on one PC at the same time; in other words, maximum six external display devices can be connected to one PC.

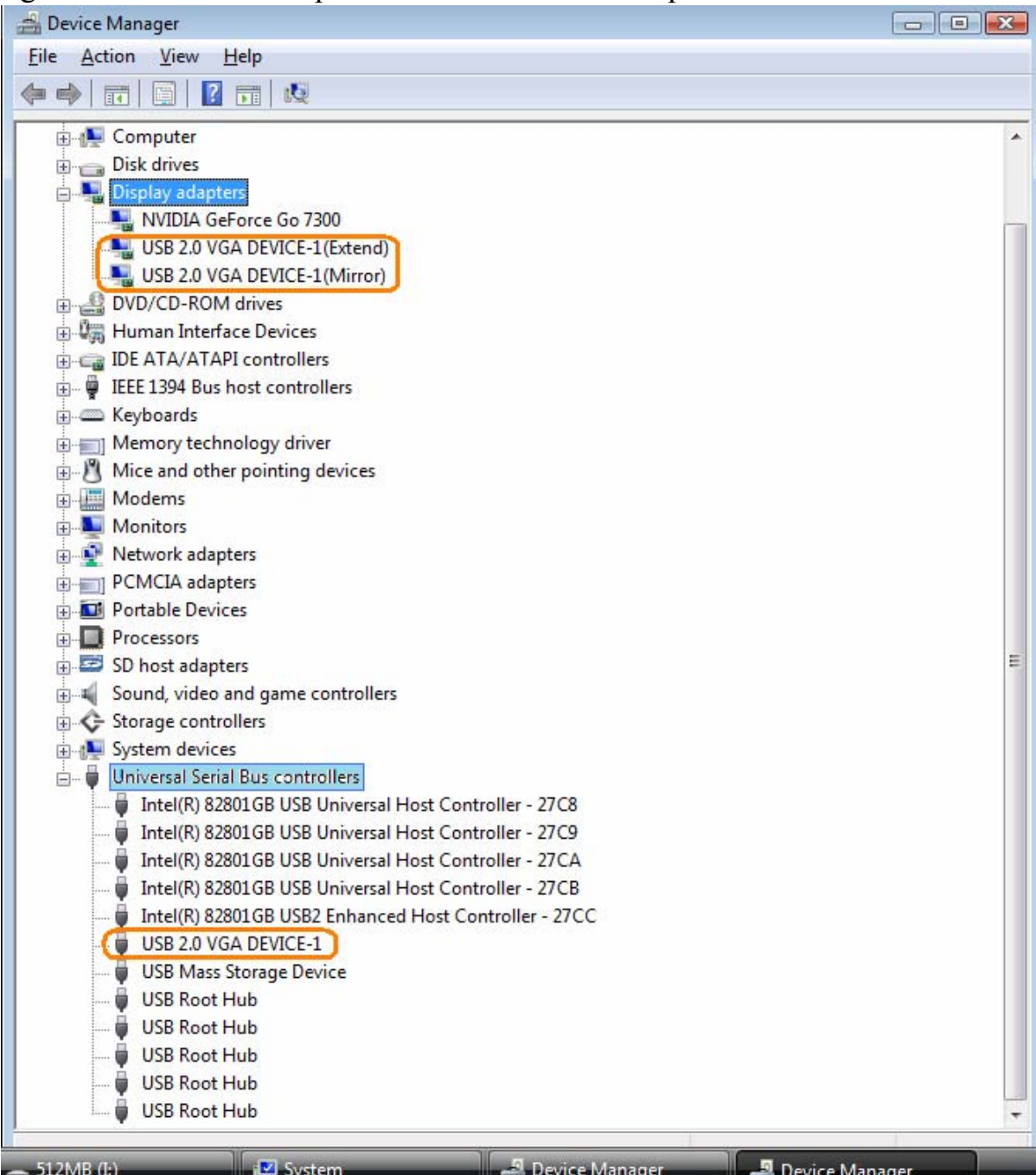
VERIFYING DEVICE DRIVER INSTALLATION

The following procedure allows you to verify the device driver installation.

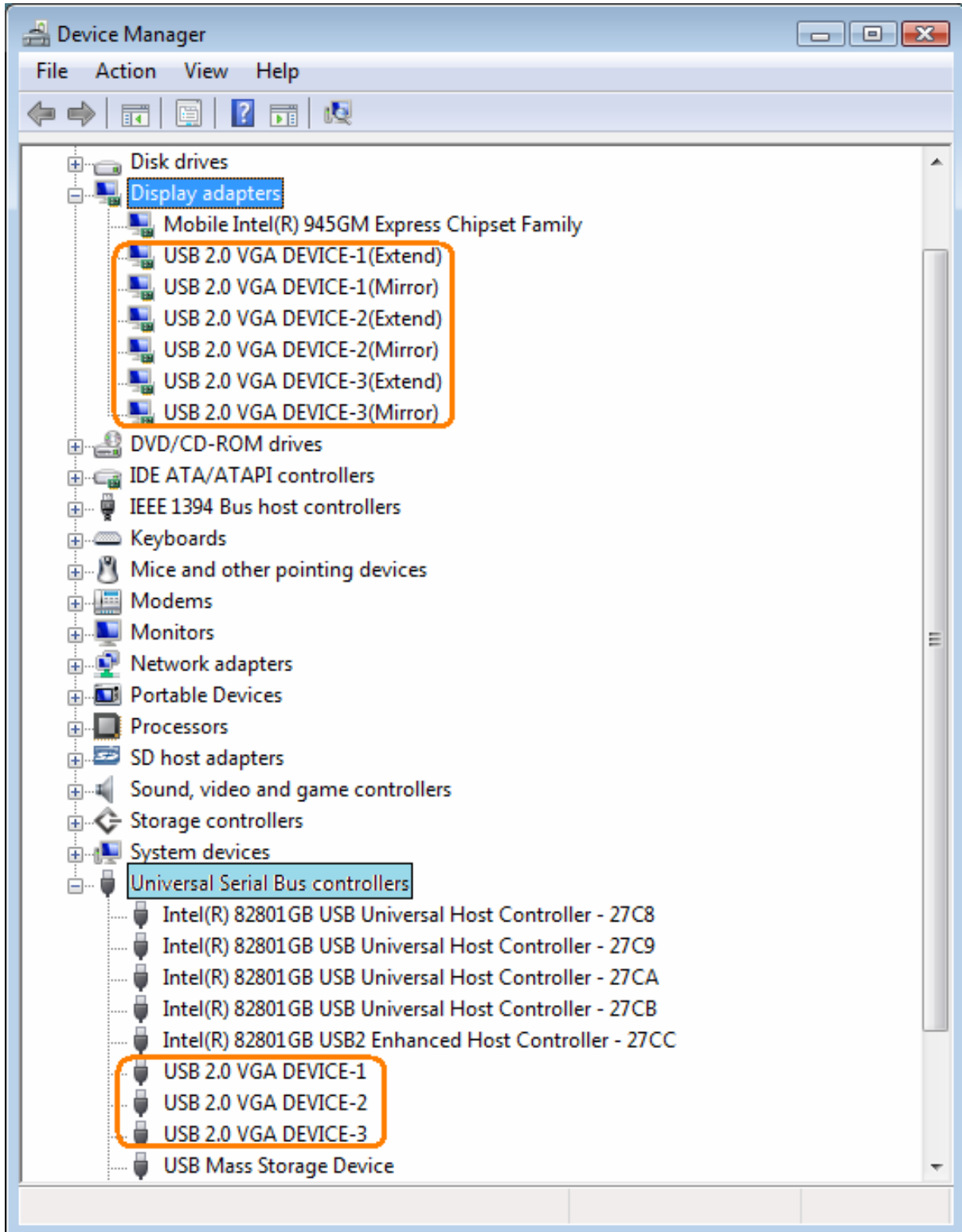
Please right click “**Computer**” → “**Properties**” → “**Device Manager**”.

Please double click “**Display adapters**”, and “**Universal Serial Bus controllers**”.
Installed one unit of USB 2.0 VGA Adapter:

Single USB 2.0 VGA Adapter installation on the computer:



Multiple USB 2.0 VGA Adapter installation on the computer



DEVICE DRIVER UN-INSTALLATION

The following procedure allows you to perform un-installation of the USB 2.0 VGA Adapter’s device driver. Please make sure the USB 2.0 VGA Adapter is **unplugged** to your PC or Notebook before executing the device driver un-installation program.

Step 1.

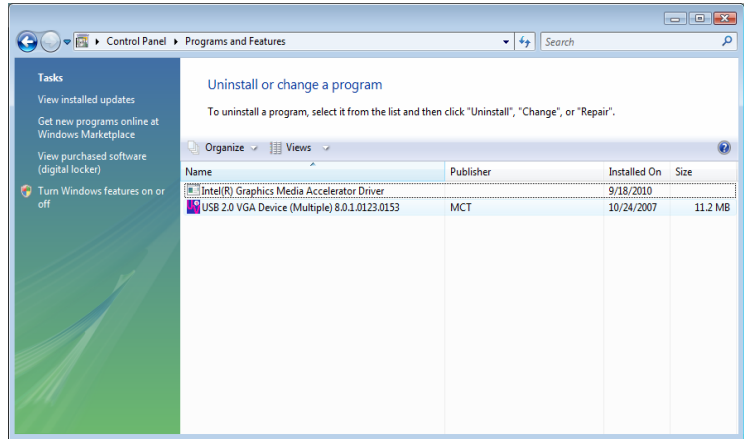
◆ **Start menu:**

Please click “**Start**” → “**Control Panel**” → “**Program and Features**”.

◆ **Classic Start menu:**

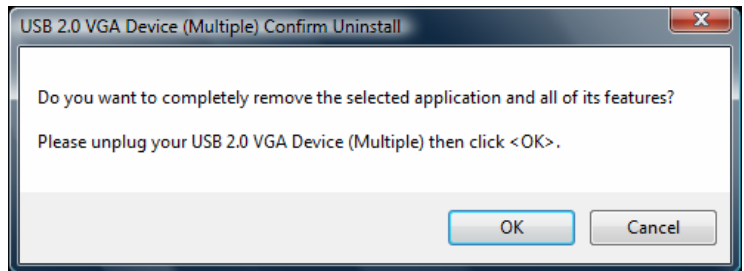
Please click “**Start**” → “**Settings**” → “**Control Panel**” → “**Program and Features**”.

Select “**USB 2.0 VGA Device (Multiple) (driver version number)**” item. Click “**Uninstall**” button.



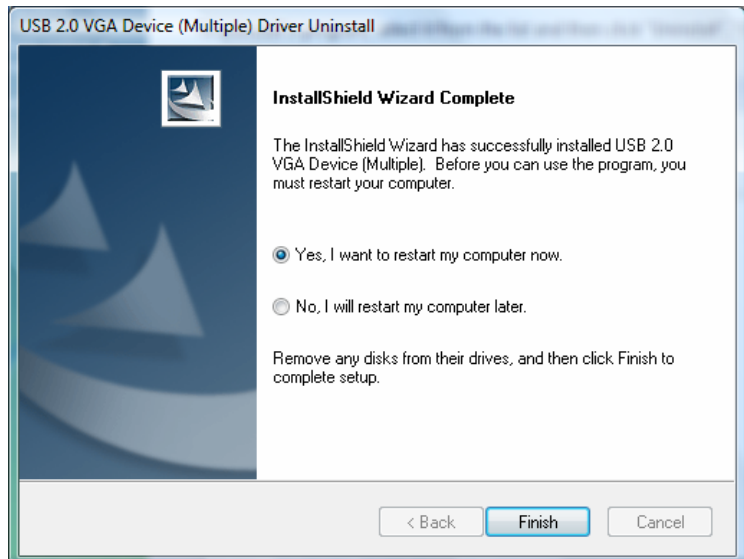
Step 2.

Click “**OK**” to continue.



Step 3.

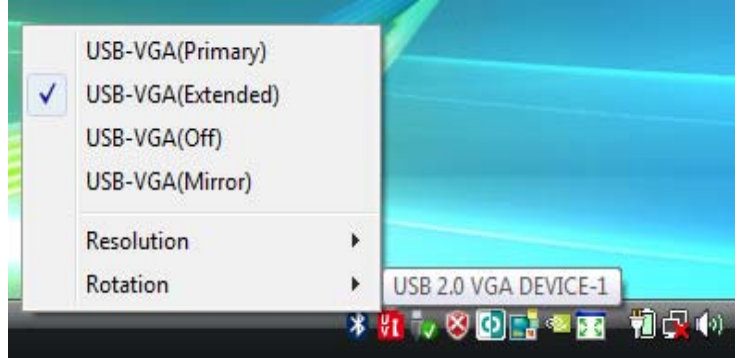
Select “**Yes, I want to restart my computer now**” and click “**Finish**” to reboot. After reboot, you will complete the driver un-installation.



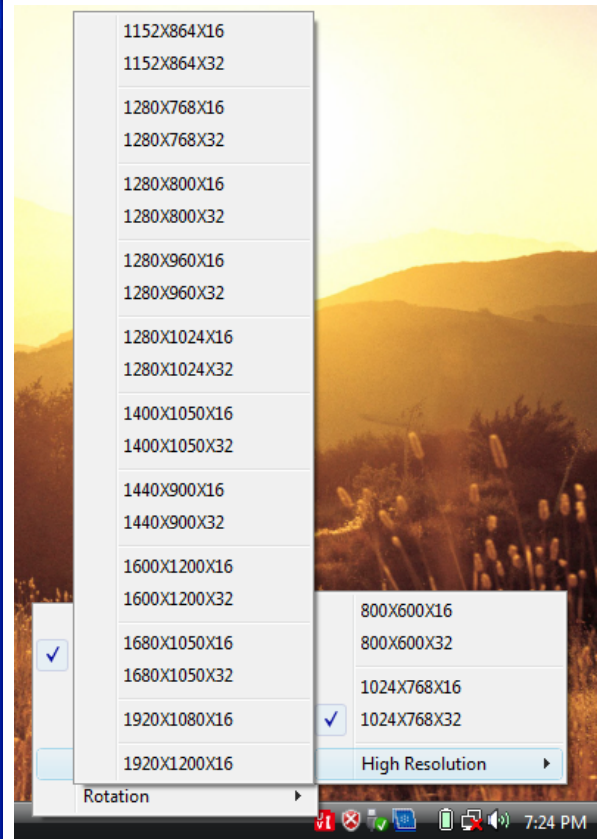
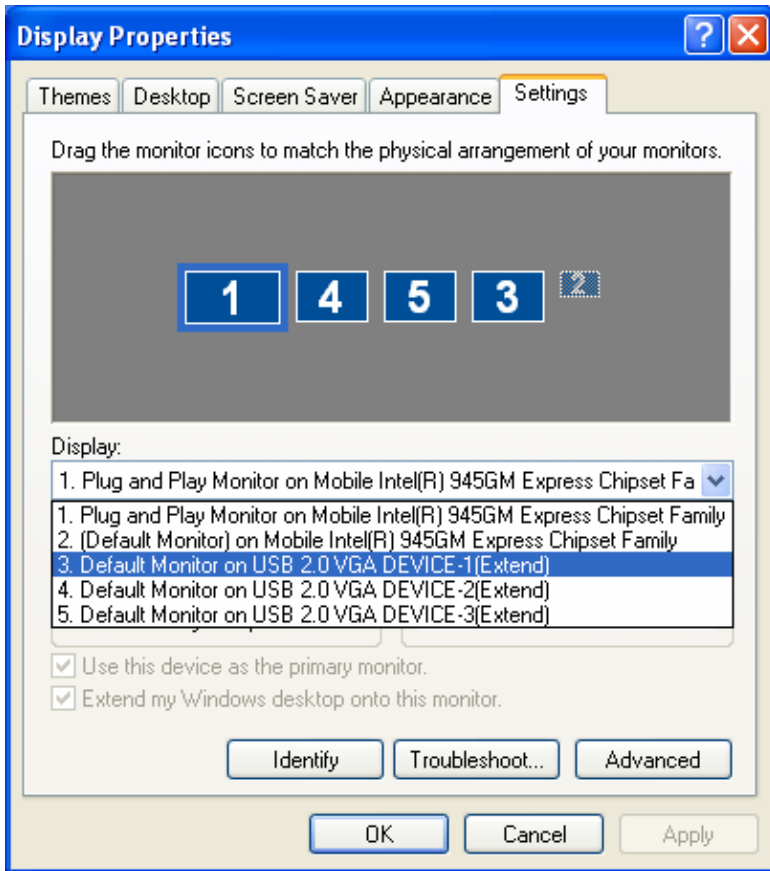
FUNCTION DESCRIPTION

This section describes the main functions provided by the USB 2.0 VGA Adapter.

- It can support the LCD or CRT monitor; it can attach the D-SUB interface LCD or CRT monitor and it supports 4 kinds of selections, Primary, Extended, Mirror and Rotation by “UV” icon.

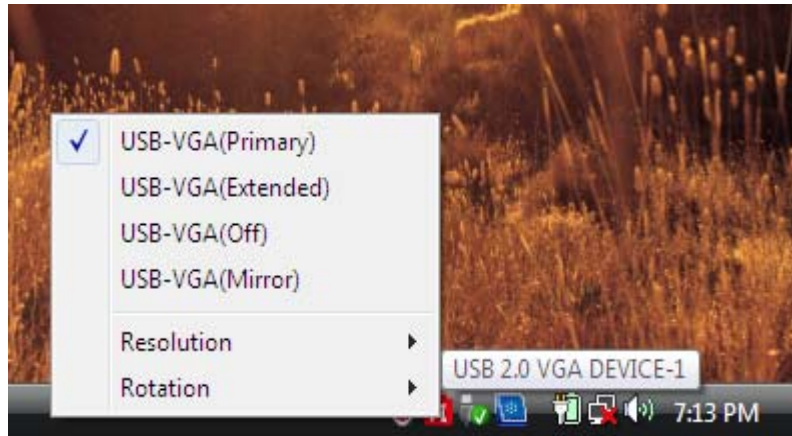


- The resolution supports from 800x600x16 bit and up-to 1920x1200x 16 bit.
- The resolution can be modified via the system tray or Display Properties.



“Primary” Mode

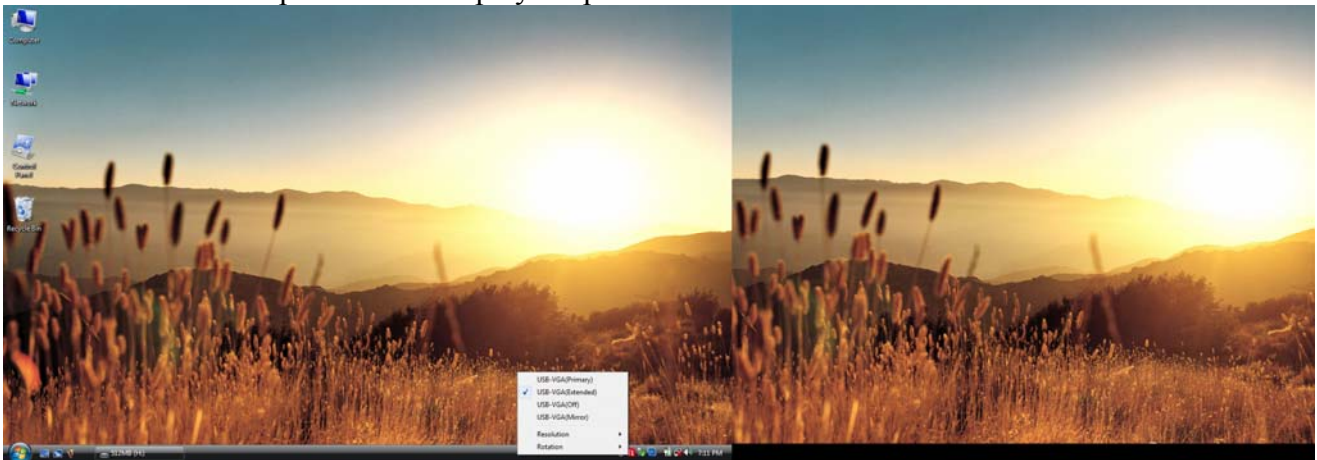
The system’s main graphics adapter will automatically switch to act as the secondary graphics adapter and the main screen will now work as the extended desktop. The monitor connected to the USB 2.0 VGA Adapter will now act as the primary Windows desktop. Please be advised that some display utility and drivers that shipped with certain AGP and built-in display adapters may prevent this option from working on some systems. You can disable the other utility program (usually found in the same toolbar located on the bottom right hand corner) to make this function work properly.



You can disable the other utility program (usually found in the same toolbar located on the bottom right hand corner) to make this function work properly.

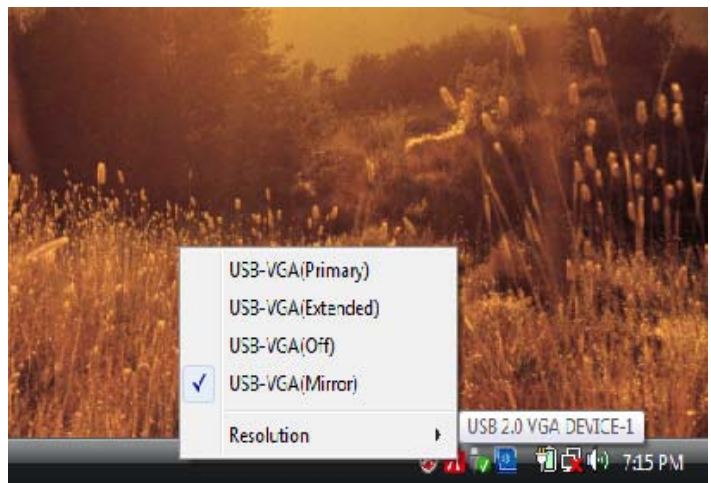
“Extended” Mode (Default)

By default, the monitor connected to USB 2.0 VGA Adapter will work as, “Extended Desktop” which extends the primary Windows desktop of your system. You can change the relative position of this extended desktop under the Display Properties.



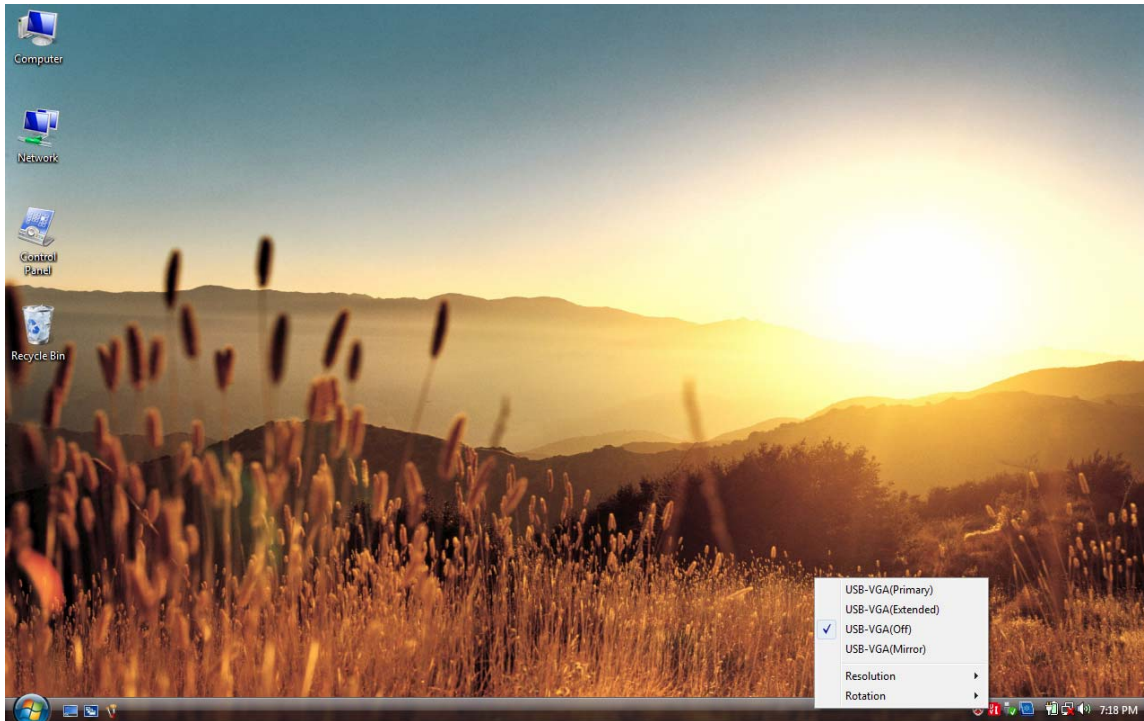
“Mirror” Mode

By setting this mode, the Windows desktop will be mirrored/replicated to the secondary CRT/LCD monitor. The screen resolution setting on the secondary monitor will follow the primary screen’s resolution. For example, if the primary resolution is 1024x768x32bit, and the secondary monitor’s resolution will be the same. But if the selected resolution setting is not supported by the primary screen, a warning dialogue box will be displayed and the suggested screen resolution will be shown.



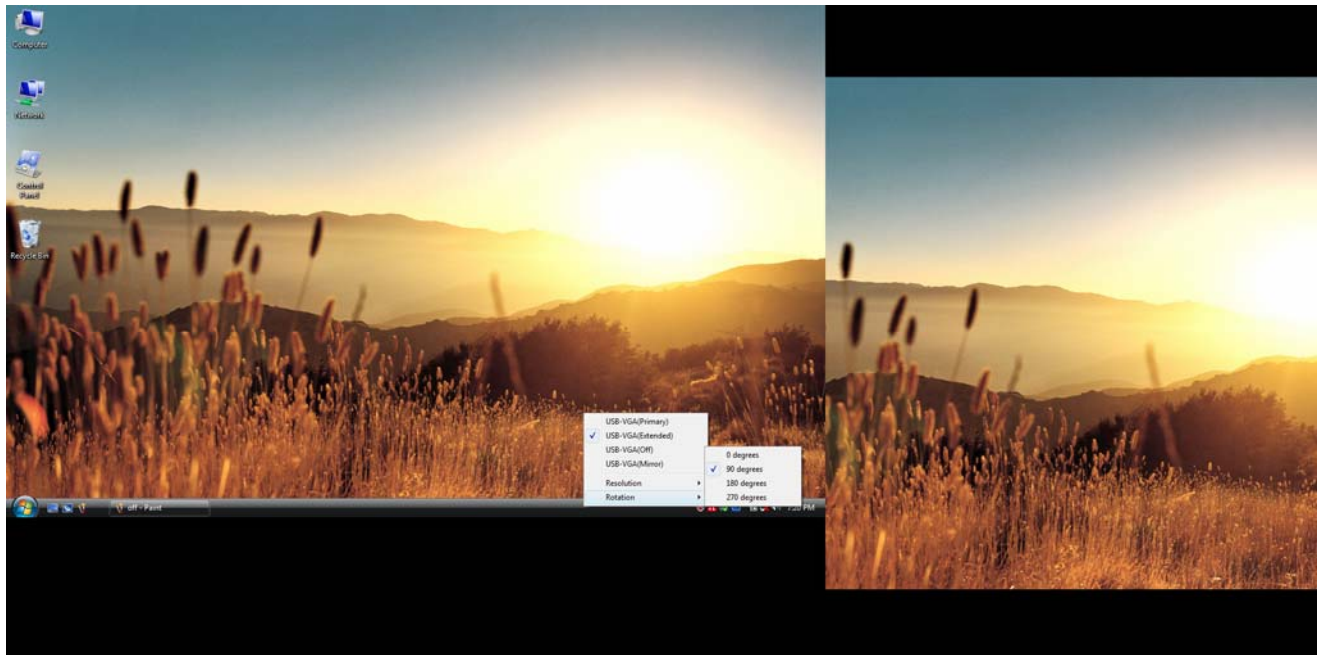
“OFF” Mode

This option disables the USB 2.0 VGA Adapter on the system.



Rotation

This feature enables setting the orientation of the secondary CRT/LCD monitor. Several options such as “0 degrees”, “90 degrees”, “180 degrees” or “270 degrees” are available under the Extended or Primary mode.



Q&A

This section describes the common Q&A regarding to the installation or operation of the USB 2.0 VGA Adapter.

Q: Why can't I make the USB 2.0 VGA Adapter the primary display?

A: Some video cards ship their product with a utility that prevent other video cards from being set as the primary card. Check the bottom right hand corner taskbar for the utility. Disable the utility before switching our adapter to be the primary display.

Q: Why won't my DVD player work when I move it over to the extended display?

A: Some DVD playback software packages do not support playing on a second display adapter of any kind. You may try to open the program in the secondary display first before playing the DVD.

Q: How come my video will not play on Media Player if I move it over to the extended desktop?

A: Check that you have moved the Media Player window completely over to the second screen.

Q: Why does my mouse not move pass the right side of the screen as it should on extended desktop?

A: Check the display settings and make sure that your display number '2' is on the right side of display number '1'. You can rearrange how Windows treats each display in relation to each other in the Display Properties Settings.

Q: There are lines running horizontally up and down my screen.

A: This is due to a low refresh rate setting. You can change this in the Display Properties Settings Advanced Monitor. Make sure you select the USB 2.0 VGA Device first and not set the refresh rate higher than what your monitor can support. This may damage your monitor. You can also try to reset/refresh/resynchronize your monitor.

Q: Direct3D does not work?

A: This is a current limitation of the adapter. Please check for driver updates in the future to add support for this. If your application requires this, please use the main display adapter.

Q: Why won't the Adapter work on Windows Vista 64 bit version?

A: Currently, the driver is compatible with Windows Vista 32 bit version only. Please check for the driver updates in the future.

TROUBLESHOOTING TIPS

The following troubleshooting tips may help if you are experiencing any difficulties using our device. Contact your dealer for additional assistance if needed.

- Check to make sure that all connectors are plugged in correctly.
- Make sure that the USB port that you are using is USB 2.0.
- Try a different USB 2.0 port and/or computer
- Check to see that the monitor is connected correctly and the power is ON.
- Try connecting the adapter directly to the computer instead of through a hub.
- Unplug all other USB devices from the system.
- Make sure to restart your computer after the driver installation.
- Unplug the adapter and re-insert it.
- Check the website to make sure you have the latest drivers.
- Reset/refresh/resynchronize your monitor.
- For better performance on watching DVD on the secondary display, it is recommended to use the following license free software.

Media Player Classic: <http://sourceforge.net/projects/guliverkli/>

- For better DVD movie file decoder complied with Windows Media Player, suggestion the following free software.
K- Lite: http://www.free-codecs.com/download/K_Lite_Codec_Pack.htm
- Selecting Primary Mode may disable the main system display on certain Intel graphics solution based computer system.
- If you have problems during the boot up process, start your computer in Safe Mode and uninstall the driver. Hold the CTRL key until the Windows startup menu appears and select Safe Mode.

REGULATORY COMPLIANCE

FCC

This equipment has been tested and found to comply with Part 15 / Subpart B of the FCC rules. Operation is subject to the following two conditions:

- This device may not cause harmful interference
- This device must accept any interference received, including interference that may cause undesired operation.

CE

This equipment is in compliance with the requirements of the following regulations:

EN 55022: 1998+A1:2000+ A2:2003,

EN 55024: 1998+A1:2001+ A2:2003), (IEC/EN 61000-4-2 /-3)

C-Tick

This equipment is in compliance with the requirements of the following regulations:

EN 55022: 1998 + A1:2000+A2:2003, AS/NZS CISPR22 © IEC: 2005.

VCCI

This equipment is in compliance with the requirements of the following regulations:

V-3/2006.04, TECHNICAL REQUIREMENTS

V-4/2006.04, SUPPLEMENTARY TEST CONDITIONS FOR EQUIPMENT UNDER TEST

Disclaimer

Information in this document is subject to change without notice. The manufacturer does not make any representations or warranties (implied or otherwise) regarding the accuracy and completeness of this document and shall in no event be liable for any loss of profit or any commercial damage, including but not limited to special, incidental, consequential, or other damage. No part of this document may be reproduced or transmitted in any form by any means, electronic or mechanical, including photocopying, recording or information recording and retrieval systems without the express written permission of the manufacturer.