

ELECTRIXTM

EQKiller

English V1.01

Band Kill Effects Owner's Manual



The lightning flash with arrowhead symbol, within an equilateral triangle, is intended to alert the user to the presence of uninsulated 'dangerous voltage' within the product's enclosure that may be of sufficient magnitude to constitute a risk of electric shock to persons.

The exclamation point within an equilateral triangle is intended to alert the user to the presence of important operating and maintenance (servicing) instructions in the literature accompanying the product.

INSTRUCTIONS PERTAINING TO A RISK OF FIRE, ELECTRIC SHOCK, OR INJURY TO PERSON

IMPORTANT SAFETY INSTRUCTIONS READ AND SAVE THESE INSTRUCTIONS


This product may be equipped with a polarized line plug (one blade wider than the other). This is a safety feature. If you are unable to insert the plug into the outlet, contact an electrician to replace your obsolete outlet. Do not defeat the safety purpose of the plug. **For the USA**

For Polarized Line Plug: **For Canada**
Caution: TO PREVENT ELECTRIC SHOCK, MATCH WIDE BLADE OF PLUG TO WIDE SLOT, FULLY INSERT.
Attention: POUR ...VITER LES CHOCS ...LECTRIQUES, INTRODUIRE LA LAME LA PLUS LARGE DE LA FICHE DANS LA BORNE CORRESPONDANTE DE LA PRISE ET POUSSER JASQU' AU FOND.

IMPORTANT: THE WIRES IN THIS MAINS LEAD ARE COLOURED IN ACCORDANCE WITH THE FOLLOWING CODE: **For the U.K.**

BLUE: NEUTRAL
BROWN: LIVE

As the colours of the wires in the mains lead of this apparatus may not correspond with the coloured markings identifying the terminals in your plug, proceed as follows. The wire which is coloured BLUE must be connected to the terminal which is marked with the letter N or coloured BLACK. The wire which is coloured BROWN must be connected to the terminal which is marked with the letter L or coloured RED. Under no circumstances must either of the above wires be connected to the earth terminal of the three pin plug.

 **Double Insulation:** When servicing use only identical replacement parts.

WARNING - When using electric products, basic precautions should always be taken, including the following:

1. Read all the instructions before using the product.
2. Do not use this product near water - for example near a bathtub, washbowl, kitchen sink, in a wet basement, or near a swimming pool, or the like.
3. This product should be used only with a cart or stand that is recommended by the manufacturer.
4. This product, either alone or in combination with an amplifier and headphones or speakers, may be capable of producing sound levels that could cause permanent hearing loss. Do not operate for long period of time at high volume or at an uncomfortable level. If you experience any hearing loss or ringing in the ears, consult an audiologist.
5. This product should be located with sufficient air space for proper ventilation.
6. The product should be located away from heat sources such as radiators, heat registers, or other products (including amplifiers) that produce heat.
7. Clean only with a damp cloth. Before cleaning the unit, turn off the power and unplug the power cord from the outlet.
8. The power supply cord of the product should be unplugged from the wall outlet during lightning storms or when left unused for a long periods of time.
9. Use only with attachments/accessories specified by the manufacturer.
10. The product should be serviced by qualified service personnel when:
 - A. The power supply cord or the plug has been damaged; or
 - B. Objects have fallen, or liquids has been spilled into the product; or
 - C. The product has been exposed to rain; or
 - D. The product does not appear to be operate normally or exhibits a marked change in performance; or
 - E. The product has been dropped, or the enclosure damaged.
11. Do not attempt to service the product beyond what has been described in the user maintenance instructions. All other servicing should be referred to qualified service personnel.

Table of Contents

Introduction5
Quick Start6
What to Connect Where6
A First Look at the Controls7
Understanding the EQ Killer8
Front Panel8
Back Panel9
Signal Flow10
Performance Guide11
Artist Applications14
Specifications16
Safety & Conformity17

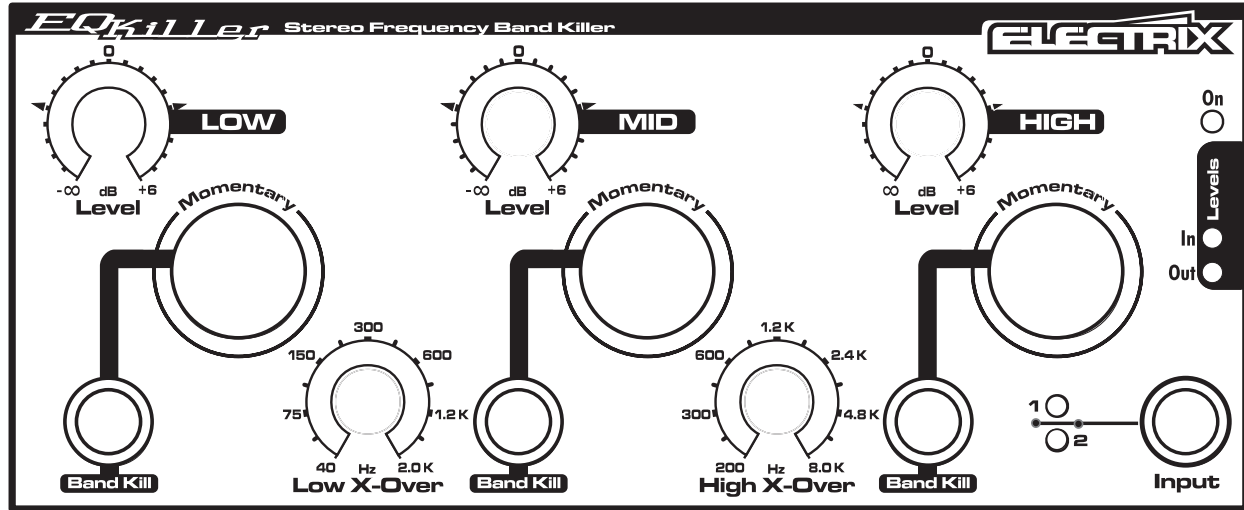
Inventory INSPECTION:

The uniquely styled Electrix carton should contain:

- Electrix EQ Killer
- EQ Killer User Manual
- Rackmount kit (shipped attached to product)
- Warranty Card
- Power Transformer (as appropriate for your region)
- Electrix Joiner Plate (joins two "Mods" together!)

Note: If any of the above are missing, please inform your local Electrix distributor, agent or dealer immediately.

Settings Template



Title: _____

Session: _____

Date: _____

Artist: _____

Description: _____

Introduction

Welcome to Electrix! We would like to thank you for purchasing EQ Killer, a customizable Kill Box for DJ's and producers. EQ Killer represents an entirely new concept in musical electronics, unique in both its "hands on" ease of use and "retro/futuristic" design.

EQ Killer can directly process a wide range of input signal sources from vinyl to CDs, as well as synthesizers, samplers, or just about anything else in your rig.

EQ Killer boasts three frequency bands with level controls and frequency selection for maximum "Performance EQ." The dual path architecture allows easy switching between two turntables or line level devices to individually access EQ Killer's band killing or boosting effect. There's even a stereo send and return loop so you can apply external effects to the "killed" bands!

A New Dimension in FX!

EQ Killer is part of a new series of remix tools from Electrix called the "Mods." Like the Modular Synthesizers of the 1960's and 1970's, multiple "Electrix Mods" can be racked together to create a "hands on" effects monster.

EQ Killer's unique industrial design allows it to be used in a 10" rack mount or as a desktop tool. We've even included a joiner plate to connect two Mod products together to fit in a 19" rack. This new concept makes EQ Killer's control surface perfect for any use, whether live or in the studio. Check out the shape!

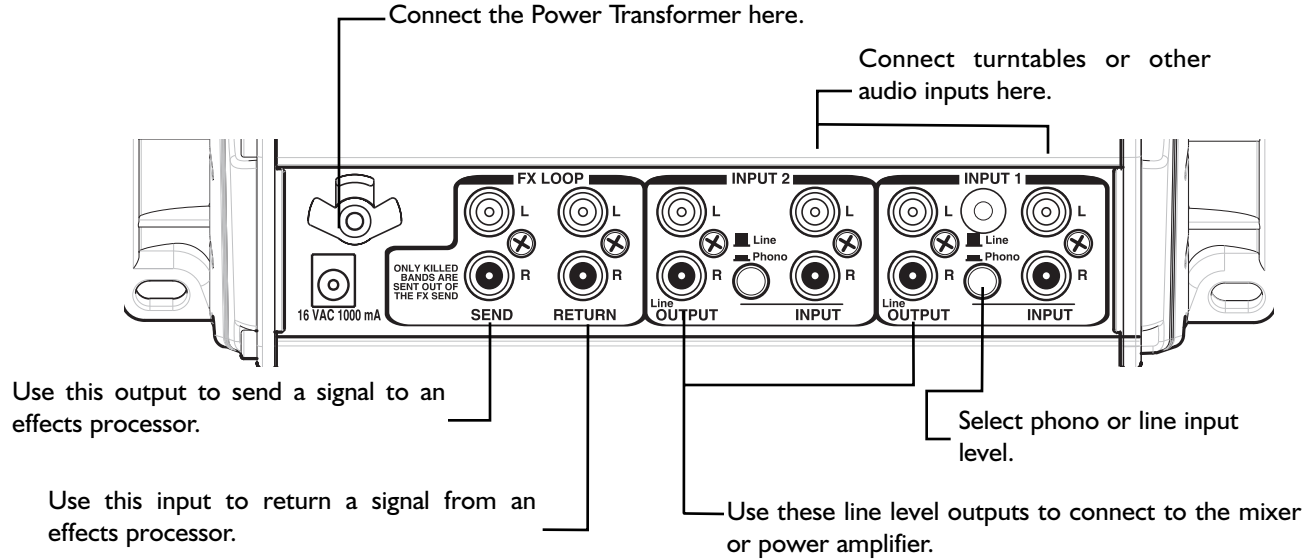
For maximum flexibility, connect EQ Killer to other members of the Electrix Mods family. For example, the Filter Queen is a great sounding Analog HIGH Order Filter that offers DJs, musicians and producers the award winning quality of the Electrix Filter Factory in an even more cost effective package. Also, check out the Electrix MoFx for distortion, phasor and delay, as well as the Electrix Warp Factory for vocal effects and vocoding.

We want to know what YOU think about the future of remix, and we would also like to hear what you can do with Electrix gear. Please send your CDs, MDs, vinyl or cassettes to us at the address on the back page of this manual.

Want to find out more about the Mods or other Electrix products? Check out our Web site at: www.electrixpro.com. Again, thanks for purchasing EQ Killer. Now get your "Hands On" and get creative!

QUICK START • What to Connect to Where

Here is the simplest way to pass audio signals through EQ Killer and create effects:

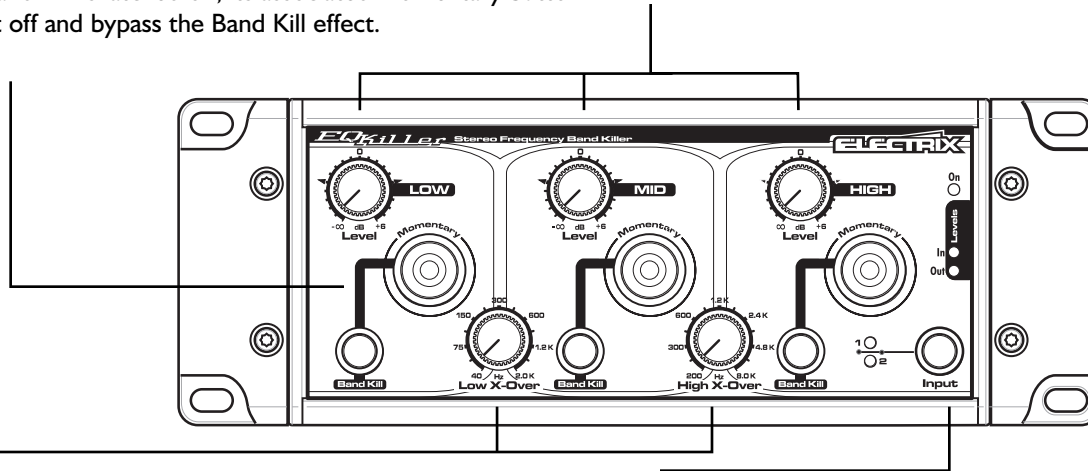


Note: When using the FX send and return to an external FX unit, the EQ Killer no longer functions as a Kill Box. Instead, the EQ Killer sends effected signal to another processor (such as an Electrix Filter Queen,) then returns the processed signal back to the EQ Killer's outputs along with the unaffected bands.

QUICK START • A First Look at the Controls

Momentary & Band Kill Buttons: The momentary buttons are used to "play" the band killing effect in time with the music. The Band Kill buttons latch the Band Kill effect on or off. When a Band Kill is latched on, its associated Momentary button will turn it off and bypass the Band Kill effect.

Band Level Controls: Use these to adjust the volume of each band. Band gain is at unity when the band level control is returned to the notched position at 12:00.



LOW and HIGH X-Over Controls: The X-Over controls allow you to customize the width of each band on EQ Killer. The LOW X-Over control sets the frequency transition point where the LOW band ends and the MID band starts. The HIGH X-Over control defines where the MID band ends and the HIGH band starts.

Input 1/2 Select Switch: This switch selects which of the two signal paths is routed through the band killing circuitry of the EQ Killer. If there is only one signal path through EQ Killer this control will function like an effect bypass.

Understanding the EQ Killer • Front Panel

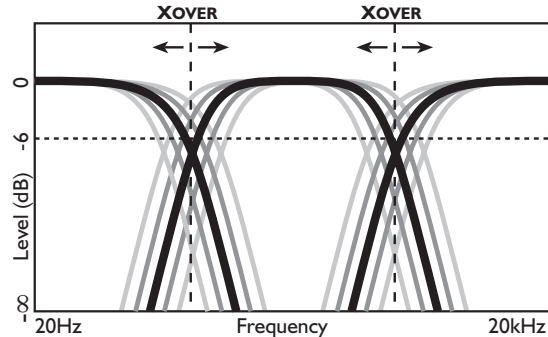
LOW, MID and HI Band Level Controls: This sets the amount of the band to be introduced to the music. At the centered position there is no change in the band signal level, this is commonly known as "Unity gain". When a band has been "Killed", the band level control sets the Effect send level for that band. The Band Level controls allow for up to 6 dB of gain per band. Take care to ensure that this can be reproduced by your sound system without causing damage.

Momentary & Band Kill Buttons:

The momentary buttons are used to "play" the band killing effect in time with the music. The Band Kill buttons latch the Band Kill effect on or off. Momentary buttons reverse the Band Kill state. If a Band Kill is latched on, the Momentary will bypass the Band Kill effect. If the Band is not "killed", the Momentary will "kill" the Band.

LOW X-Over & HIGH X-Over Controls: The X-Over controls allow the width of each band to be customized. The LOW X-Over control sets the frequency that simultaneously defines the top of the LOW band and the bottom of the MID band. The HIGH X-Over control defines the top of the MID

band and the bottom of the HIGH band. For example, you could "kill" the LOW and MID Bands and tweak the HIGH X-Over control frequency to isolate a hihat. You could also eliminate a vocal part by killing the MID band and using the LOW X-Over and HIGH X-Over controls to focus the frequency range in on the voice.



Note: It is possible to overlap the LOW X-Over and HIGH X-Over frequencies. When this is done the MID Band controls are no longer effective.

In and Out Level LEDs: These LEDs help you set and monitor the optimal signal levels from your signal sources as well as the outputs of EQ Killer. The optimal setting occurs when the In and Out LEDs show mostly green

with periodic peaks of red.

The Effect Send: Whenever a band has been killed it is sent to the stereo Effect send on the back panel of EQ Killer. Use this feature to send bands to an external effects unit for processing. There are return jacks that sum in the effect signal with the active source.

Understanding the EQ Killer • Back Panel

Power Input: This input will accept the Electrix MOD power adapter only. The unit is active as soon as power is applied.

Phono/Line Switch: When connecting a turntable set this switch to Phono. For all other inputs set the switch to Line. If your unit is sounding distorted or too quiet check to make sure this switch is in the correct position. Note: All line level inputs and outputs on the EQ Killer are nominal at +4dBu.

RCA stereo Inputs 1 & 2: Connect the output of your turntable, synth or CD player here. You can connect two line level devices or turntables to EQ Killer at one time. Because EQ Killer has "dual path" architecture, there is no internal mixing of the two inputs; instead there is an output for each input. This preserves the ability to cue each signal source individually on your mixer.

RCA stereo Outputs 1 & 2: Connect a stereo cable from here to your mixer input channel. If you have two inputs connected to the EQ Killer you should connect both of EQ Killer's outputs to inputs on the mixer. Note that even though your input may be from a turntable, EQ Killer's outputs are line level and should be connected to line level inputs on your mixer.

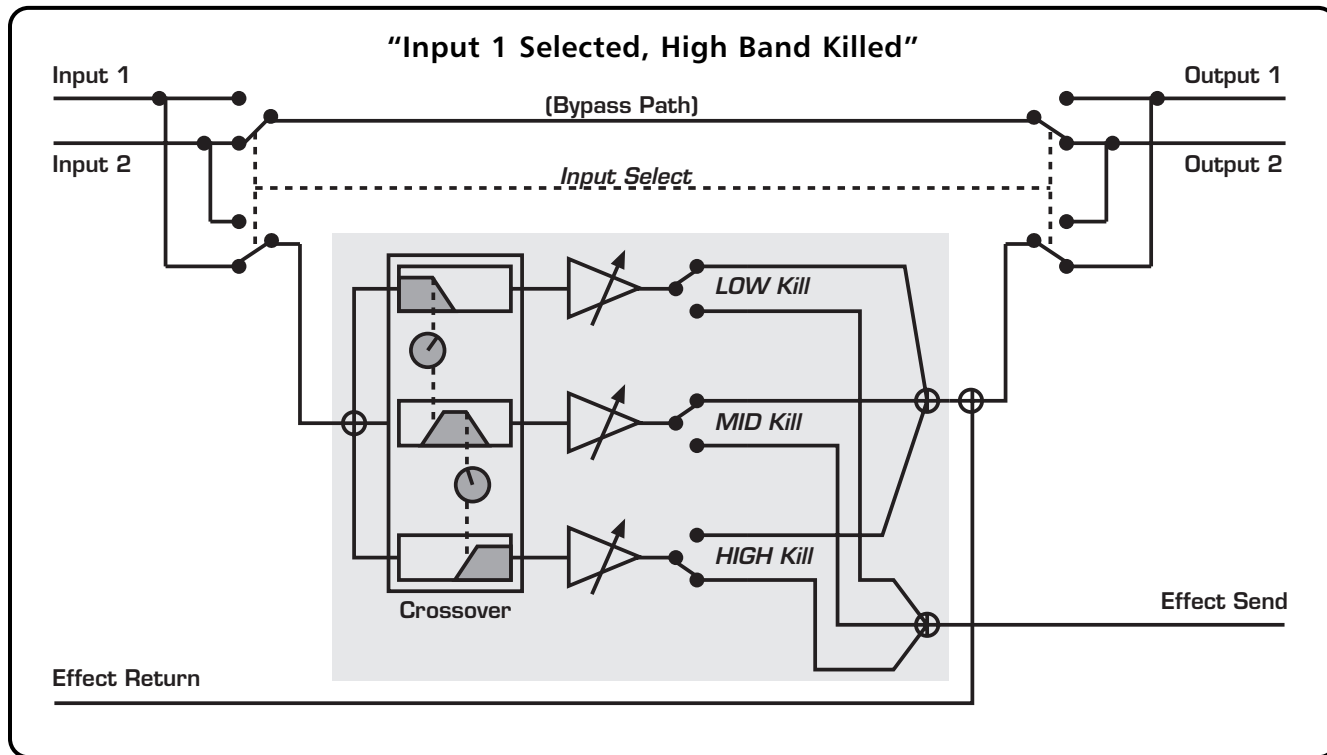
The Effects Loop: When you use the EQ Killers FX Loop, the "killed signal" gets sent to your external FX processor, then returns back to the EQ Killer. The "killed" signal with effects is then mixed back into the "unkilled" part of the original signal. This way you can isolate an instrument, apply outboard effects to it, then return that effected sound back to your mix.

- Connect a stereo cable from the EQ Killer FX Send jacks to the inputs of your outboard effect processor.
- Connect the outputs of the effect processor to the EQ Killer FX Return jacks.

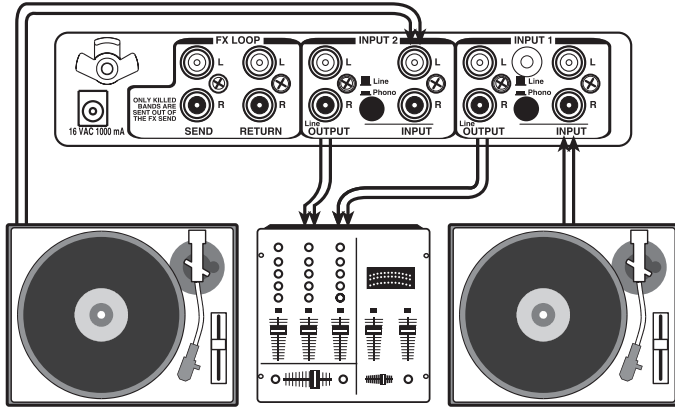
Grounding Post: Connect the ground wire from your turntable here.

Cable Strain Relief: The power supply cable can be looped around this to prevent stress on the power entry jack.

Understanding the EQ Killer • Signal Path

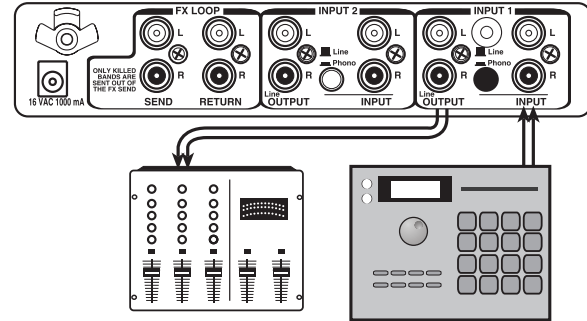


Set-up 1: Pre Mixer- 2 Sources



In this setup the two sound sources are connected directly to Inputs 1 & 2 respectively. The outputs are then fed to two channels on the mixer. This is advantageous in a live situation as EQ Killer can be auditioned (cued) while the other source is playing. Selecting Input 2 effectively bypasses the EQ Kill circuit.

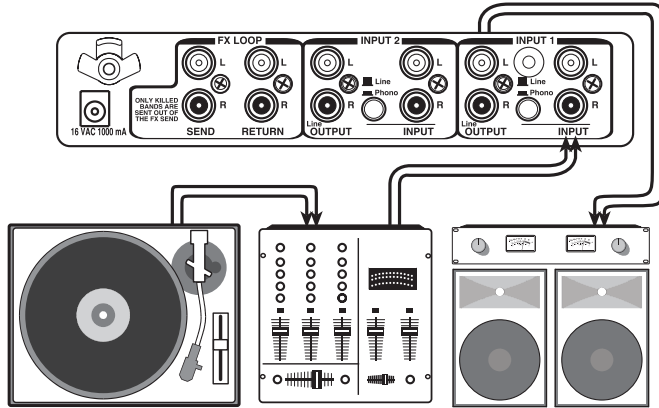
Set-up 2: Pre Mixer-1 Source



In this setup the sound source is connected directly to Input 1. Output 1 is then fed to the mixer.

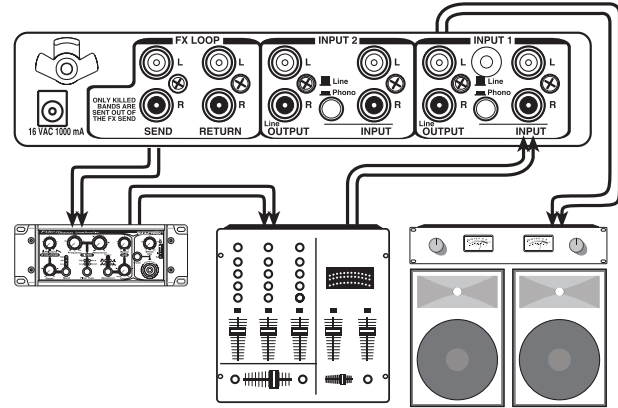
Performance Guide

Set-up 3: Post Mixer



This is a simple set-up for stereo processing of the entire mix. Cueing is not possible with this setup, so use it only after extensive experimentation with the EQ Killer. Send from the outputs of your mixer to Input 1 of EQ Killer. Set the phono/line switch for Input 1 to line. Use Output 1 to send to your amplification. Note: Switching to Input 2 now acts as a bypass, it will not cut the signal.

Set-up 4: Effect Loop Sends and your DJ Mixer



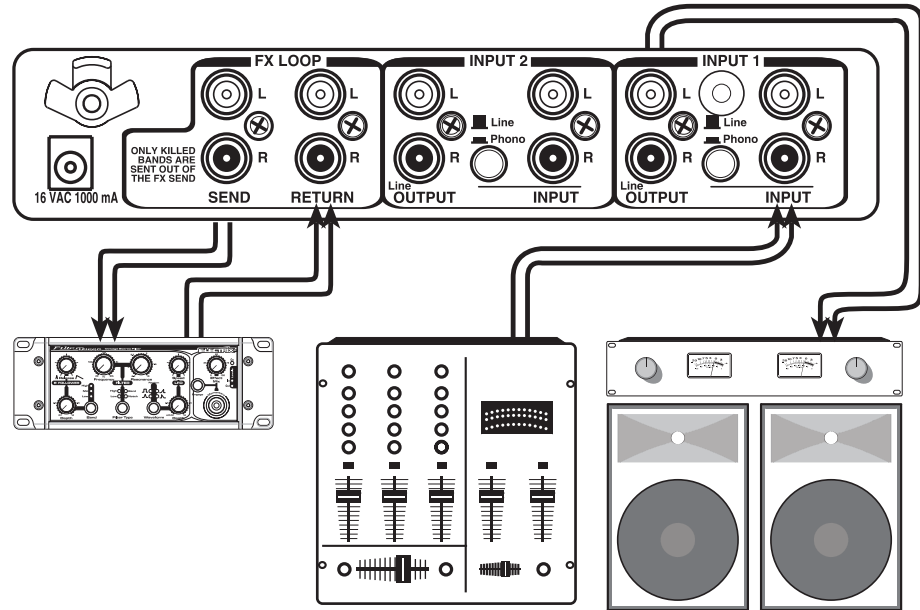
Another simple technique is to connect the Stereo Effect Sends of your EQ Killer to an extra input Channel on your DJ mixer. This way, the "killed" bands will be available for fading and cross-fading separately in your mix.

Set-up 5: Adding Outboard Effects Processors

It's easy to add outboard effects to the EQ Killer. In fact, the different Electrix Mods are designed to be routed to each other for complex modular processing.

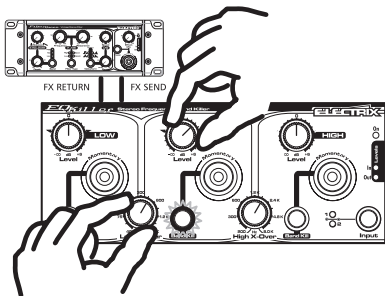
Here's an example of how to connect the EQ Killer FX Loop to an Electrix Filter Queen. You can use this setup to isolate vocals or instruments on the EQ Killer, then tweak the Filter Queen. This allows you to filter sweep just the vocals without effecting the surrounding lows or highs.

- Set up the in and out levels of the effect unit for unity gain.
- Connect the EQ Killer Effect Outputs to the Filter Queen Inputs.
- Connect the Filter Queen Outputs to the EQ Killer Effect Inputs.
- Engage the Band Kill Buttons to route the vocals to the Filter Queen.
- Use the Filter Queen to filter sweep the Vocals.



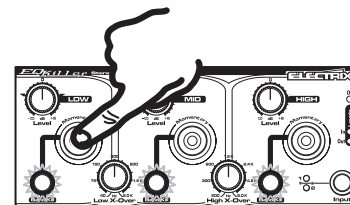
Rhythm Simplifier

Kill all three bands and listen to the source though each band independently. Adjust the frequency controls so that the LOW band controls the bass and kick drum level. And the Hi-hat is isolated to the Hi Band. Now momentarily tap each band like a drum machine to impose a simpler rhythm onto the music.



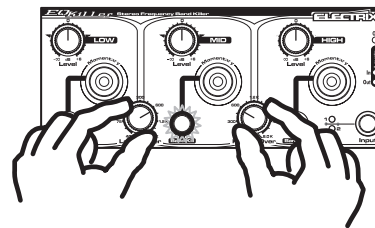
Vocal Eliminator

Kill the MID band and use the frequency controls to eliminate as much of the vocal sound as possible. That was too easy. You can smoothly cross fade the vocal eliminator effect out by sweeping the LOW/MID frequency up while sweeping the MID/hi frequency down until they overlap and the MID band signal is returned.



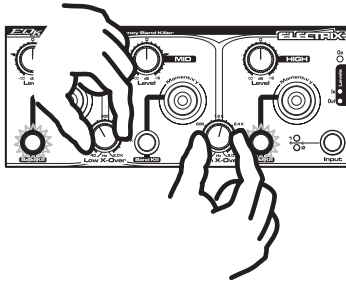
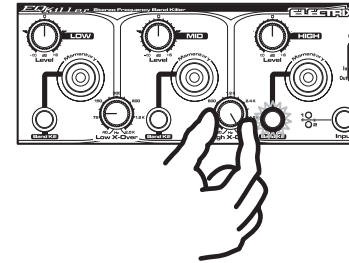
Effect Pronto

Kill the MID band and use the frequency controls to eliminate as much of the vocal sound as possible. Insert an effects device, preferably an Electrix MO-FX (or two) to the EQ Killer Effects Loop. Set the effect unit up to a harsh flanger or phaser, maybe add some distortion. Now use the MID band level control to balance out the level of the affected vocal. Reviving the MID band will bypass the effect unit.



HIGH Pass / LOW Pass Filter

Kill the LOW and Hi band. Now use the frequency control to band limit the MID band. This is useful for all types of production - from voicing instruments to creating LOW-fi sound to getting the famous "telephone" sound.

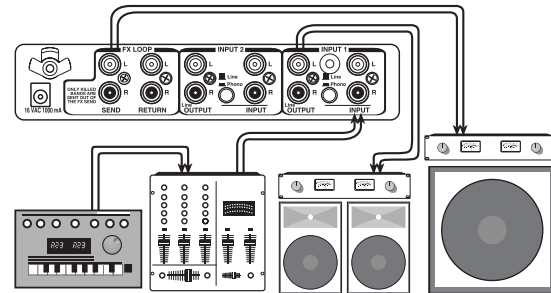


Basic Filter Sweep

Set the HIGH X-Over Frequency all the way to the top. "Kill" the HIGH band, and then sweep the HIGH X-Over frequency through its range for filter sweeping effects.

Basic Crossover

Kill the LOW Band. The Source output will now carry the MID/HI signal and the Effect send will carry the LOW signals.



Specifications

INPUT

Connectors:	RCA (Phono)	RCA (Line)
Max Input Level:	-20dBV	+18dBu
Impedance:	47K Ω	47K Ω

OUTPUT

OUTPUTS

Connectors:	RCA	RCA
Impedance:	1K Ω	1K Ω
Max Output Level:	+18 dBu	+18 dBu

PERFORMANCE

	PHONO	RCA
Dynamic Range:	>75db	>90db
THD:	<0.3%	<0.3%
Frequency Response:	10Hz-20.0kHz	10Hz-20.0kHz

POWER CONSUMPTION 16 watts

VOLTAGE

FREQUENCY

USE ONLY WITH ELECTRIX

POWER SUPPLY MODEL TFR0028

100 V	50/60 Hz
120 V	60 Hz
230 V	50 Hz
240 V	50 Hz

Actual measurements are subject to change

Safety and Conformity

This equipment has been tested and found to comply with the limits for a class A digital device, pursuant to part 15 of the FCC rules.

These limits are designed to provide reasonable protection against harmful interference in a residential installation.

This equipment generates, uses and can radiate radio frequency energy and, if not installed and used in accordance with the instructions, may cause harmful interference to radio communications. However, there is no guarantee that interference will not occur in a particular installation.

If this equipment does cause harmful interference to radio or television reception, which can be determined by turning the equipment on and off, the user is encouraged to try to correct the interference by one or more of the following measures:

- Reorient or relocate the receiving antenna.
- Increase the separation between the equipment and the receiver.
- Connect the equipment into an outlet on a circuit different from that to which the receiver is connected.
- Consult a qualified dealer or an experienced radio / TV technician for help.

The user may find the following booklet, prepared by the Federal Communications Commission, helpful: ***“How to identify and Resolve Radio/TV interference Problems.”***

This booklet is available from the US Government Printing Office, Washington, DC 20402, USA. Stock No. 004-000-0034-4.

Caution:

You are cautioned that any change or modifications not expressly approved in this manual could void your warranty.

For the customers in Canada:

This Class B digital apparatus meets all requirements of the Canadian Interference-Causing Equipment Regulations.

Cet appareil Numérique de la Classe B respecte toutes les exigences du Règlement sur le matériel brouilleur du Canada.

Certificate of Conformity

Electrix, a div. of IVL Technologies Ltd., hereby declares on their own responsibility that the following product:

Electrix EQ Killer

that is covered by this certificate and marked CE-label conforms with the following standards:

- EN 60065 Safety requirements for mains operated Electronic and related apparatus for household and similar general use
- EN 55022: 1994 (Limits and Methods: ITE Disturbances)
- EN 55082-1: 1997 (Generic Immunity: Residential)

With reference to regulations in following directives:

72/23/EEC, 89/336/EEC as amended by directive 93/68/EEC

Issued in Victoria, February 15, 2000 by Brian Gibson, Executive Vice-President, Research and Development

