

# Atlona HDMI Recorder and Hot Plug Emulator

*AT-HDSync*



## User Manual

## Table of Contents

1. Introduction	3
2. Package Contents	3
3. Features	3
4. Specifications	3
5. Panel Descriptions	
a. Front Panel	4
b. Rear Panel	4
6. Software	
a. Set up	5-6
b. Read EDID	6
c. Save EDID	6
d. View/Analyze EDID	6-7
e. Load/Edit/Write	7
7. Firmware Update	7
8. Safety Information	8
9. Warranty	9
10. Atlona Product Registration	10

## Introduction

Read, copy and replicate almost any EDID with the AT-HDSync. With built in EDID memory the HDSync is perfect for large installations where EDID issues usually occur. Simply learn the display's EDID, place the HDSync in the line next to the source and watch HDCP and EDID problems disappear. The Atlona HDMI Recorder and Hot Plug Emulator is an easy and affordable solution for some of the most common installation problems out there.

## Package Contents

- 1 x AT-HDSync unit
- 1 x 5V DC power supply unit
- 1 x Software CD
- 1 x User manual

## Features

- Able to read and store the EDID of a display
- 6 built in EDIDs to ensure the correct resolutions and audio are passed through
- Nonvolatile EDID memory - will keep the saved EDID information even after power loss
- Built in hot plug emulator with the ability to boot your source directly from the HDSync
- Comes with software for the ability to analyze, save, and troubleshoot EDID
- Easy firmware upgrading through RS-232
- HDCP Compliant

## Specifications

Input Ports	1 x HDMI (female type)
Output Ports	1 x HDMI (female type) 1 x RS-232 (female type)
Resolution outputs	up to 1080p with 3D
Audio outputs	up to 7.1 uncompressed audio
Dimensions (HxWxD)	1.1 x 3.1 x 3.6 (inch) or 27 x 80 x 91 (mm)
Weight	.53lbs or 0.024kg
Temperature	Operating: 32°F to 104°F or 0°C to 40°C Storage: -20°F to 60°F or -4°C to 140°C
Power consumption	4W

## Panel Description

### Front Panel



1. Connect the included 5V DC power supply here
2. Red LED indicates power status.
3. Green LED illuminates when a signal is present. LED will blink while learning an EDID then go solid again when finished.
4. Connect to an HDMI or DVI (with adapter) display.

### Back Panel



1. Connect a 9-pin to 9-pin cable to a computer to use the included software.
2. Connect to an HDMI or DVI (with adapter) source
3. EDID rotary for switching between EDID modes.
  - Mode 0: 1080p - 2Ch audio
  - Mode 1: 1080p - Multichannel audio
  - Mode 2: 1080p - 2Ch audio - 3D
  - Mode 3: 1080p - Multichannel audio - 3D
  - Mode 4: 1080p - Dolby Digital audio - 3D
  - Mode 5: 1080i or 720p - 2Ch audio
  - Mode 6: EDID learning
  - Mode 7: Software mode

## EDID

### Modes

Mode 0: 1080p - 2Ch audio

*\*3D and multichannel audio will not work in this mode.\**

Mode 1: 1080p - Multichannel audio

*\*3D will not work in this mode.\**

Mode 2: 1080p - 2Ch audio - 3D

*\*Multichannel audio will not pass in this mode.\**

Mode 3: 1080p - Multichannel audio - 3D

*\*The highest resolution the display and source are capable of will pass in this mode.\**

Mode 4: 1080p - Dolby Digital audio - 3D

*\*Only Dolby Digital and 2Ch audio will pass in this mode.\**

Mode 5: 1080i or 720p - 2Ch audio

*\*Multichannel audio will not pass in this mode.\**

Mode 6: EDID learning

*\*Learn the EDID of the display while in this mode. The EDID learn is non-volatile\**

Mode 7: Software mode

*\*Read, save, and analyze EDID or update firmware with the included software in this mode\**

### Learn

1. Connect the HDSync display HDMI port to the display's HDMI port
2. Plug in the 5V DC power supply to the HDSync and wall
3. Turn on the display
4. Turn the HDSync rotary to mode 6.

*\*Status LED will blink while learning the EDID\**

5. When LED goes solid again, the EDID learn is complete. Leave the EDID Rotary on mode 6.

*\*\*To relearn or learn a different EDID, turn the Rotary from mode 6 clockwise until it reaches mode 6 once more. Repeat the above steps.\*\**

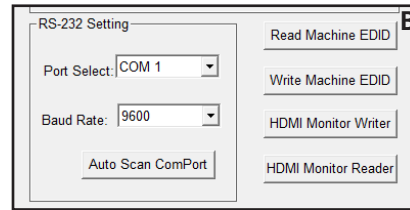
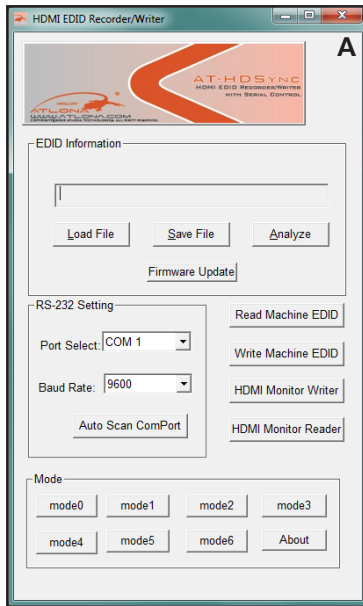
## Software

Read, save, or analyze EDID and update firmware from your computer using the included software. Easily troubleshoot compatibility issues or verify what a device is capable of.

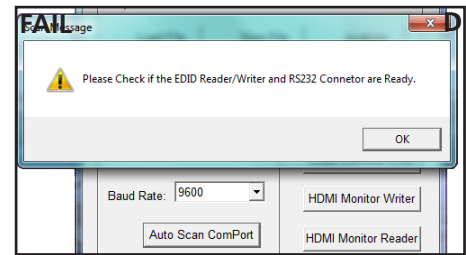
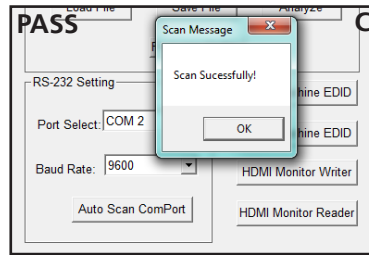
### Set Up

1. Connect a 9pin to 9pin cable from the HDSync to your PC.
2. Turn on your PC and the HDSync.
3. Insert the included software into your computer's disc drive.
4. Open the software file "HDMI EDID Recorder" (see picture A on top of page 6)



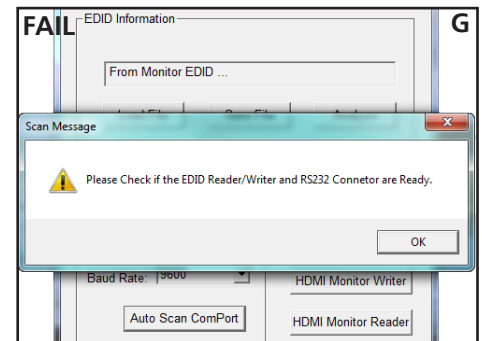
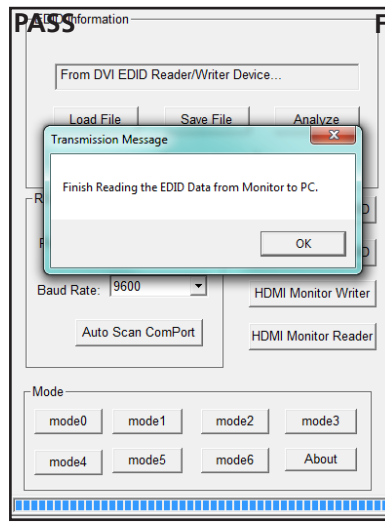
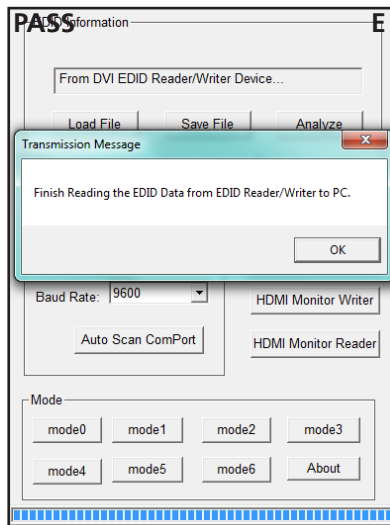


5. Once open (as pictured to the left), you should see the “RS-232 Setting” box. Press the “Auto Scan ComPort” button. (see picture B)  
**\*\*If successful you should get a command pass window (see picture C)**  
**\*\*\*If unsuccessful you will get a check device window (see picture D)**



## **Read EDID**

There are two options of reading EDID. You can read the HDSync's EDID (see picture E) or the Monitor's EDID (see picture F). To read the HDSync's EDID, press the “Read Machine EDID” then to read the HDMI/DVI monitor connected to the HDSync, press the “HDMI Monitor Reader”. Both devices will need to be powered on during this process.



If the monitor read fails: check to make sure the device is connected to the monitor port, the monitor is on and on the correct port number, and that the RS-232 cable is secure on both HDSync and computer.

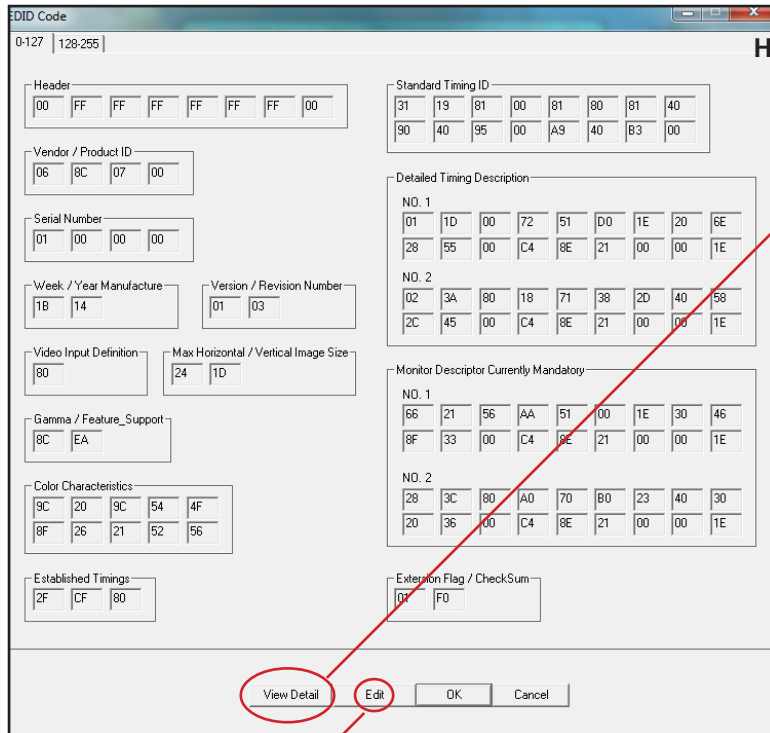
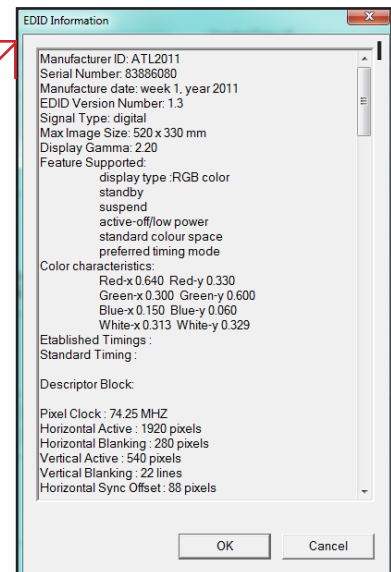
## **Save EDID**

Once you've received a pass on the EDID reading, press the “Save File” button to save the current EDID to your computer. This option is for EDID compatibility issues. Example: Send the file to an Atlona Tech Support Rep when compatibility issues come up with an Atlona product and your display.

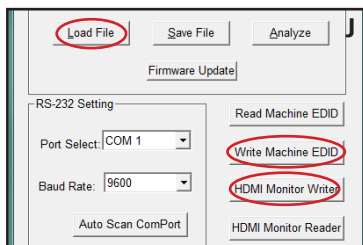
## **View/Analyze EDID**

Once you've received a pass on the EDID reading, press the “Analyze File” button to view the EDID code. If you'd like to see more details about the product press the “View Detail” button. (See picture H on top of page 7). This option is best used for trying to troubleshoot issues of the wrong resolution being passed between source and display. Use this to view things such as the display's native resolution, etc (see picture I on top of page 7).



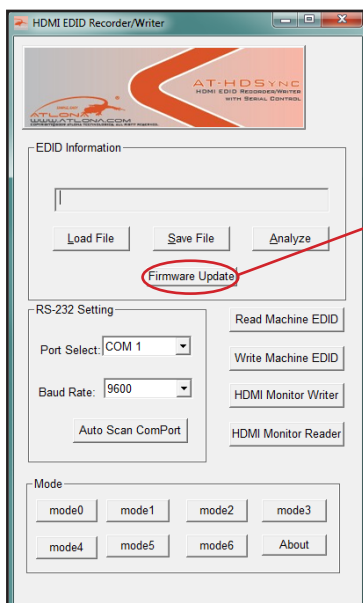
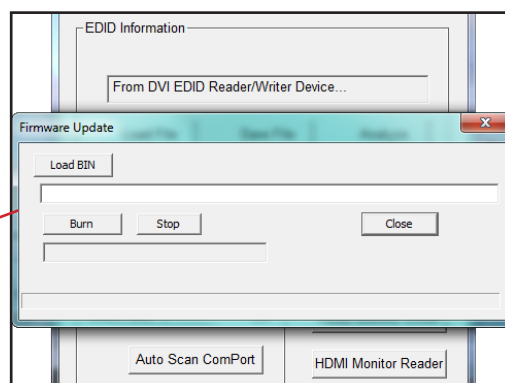
## Load/Edit/Write EDID



The **Load/Edit/Write** (see pictures H and J) functions of the HDSync **should not be used**, except by component manufacturers. Changing or loading an incorrect file onto a device may cause permanent damage to the device and/or void its warranty. **Atlona is not liable for any damages caused to other devices when using these features.**

## Firmware Update

After the Com port has been selected (see page 6) successfully, you can select the "Firmware Update" at any time. This update is for the AT-HDSync only, not attached devices.

Once the Firmware Update window has come up, you will press the "Load BIN" button and select the most recent firmware file, downloaded from [atlona.com](http://atlona.com).

The file path should show in the white address bar. Once the correct firmware displays, press the "burn" button. A blue progress bar will fill at the bottom of the Firmware Update window. Once done, the firmware update is complete and you may close out of the program.

## Safety Information

### Safeguards



To reduce the risk of electric shock, do not expose this product to rain or moisture



Do not modify the wall plug. Doing so will void the warranty and safety features.



If the wall plug does not fit into your local power socket, hire an electrician to replace your obsolete socket.



This equipment should be installed near the socket outlet and the device should be easily accessible in the case it requires disconnection.

### Precautions

FCC regulations state that any unauthorized changes or modifications to this equipment, not expressly approved by the manufacturer, could void the user's authority to operate this equipment.

Operate this product using only the included external power supply. Use of other power supplies could impair performance, damage the product, or cause fires.

In the event of an electrostatic discharge this device may automatically turn off. If this occurs, unplug the device and plug it back in.

Protect and route power cords so they will not be stepped on or pinched by anything placed on or against them. Be especially careful of plug-ins or cord exit points from this product.

Avoid excessive humidity, sudden temperature changes or temperature extremes.

Keep this product away from wet locations such as bathtubs, sinks, laundries, wet basements, fish tanks, and swimming pools.

Use only accessories recommended by Atlona to avoid fire, shock, or other hazards.

Unplug the product before cleaning. Use a damp cloth for cleaning and not cleaning fluid or aerosols. Such products could enter the unit and cause damage, fire, or electric shock. Some substances may also mar the finish of the product.

Never open, remove unit panels, or make any adjustments not described in this manual. Attempting to do so could expose you to dangerous electrical shock or other hazards. It may also cause damage to your AT-HDSync. Opening the product will void the warranty.

Do not attempt to service the unit. Disconnect the product and contact your authorized Atlona reseller or contact Atlona directly.



## Warranty

### Limited Warranty

Atlona Technologies warrants that (a) its products (AT-HDSync) will perform substantially in accordance with the accompanying written materials for a period of 3 years from the date of receipt and (b) that the product will be free from defects in materials and workmanship under normal use and service for a period of 3 years. In the event applicable law imposes any implied warranties, the implied warranty period is limited to 3 years from the date of receipt. Some jurisdictions do not allow such limitations on duration of an implied warranty, so the above limitation may not apply to customers that fall within those areas.

### Customer Remedies

Atlona Technologies' and its suppliers' entire liability and Customer's exclusive remedy shall be, at Atlona Technologies' decision, either return of the price paid for the product, repair, or replacement of the product that does not meet this Limited Warranty and which is returned to Atlona Technologies with a copy of the Customer's receipt. This Limited Warranty is void if failure of the product has resulted from accident, abuse, misapplication, or natural occurrence. In example but not limited to: power surges (electrical storms, local power outage), dropping the product (or items on the product), contact with fluids, and physical misconduct (i.e. kicking or punching). Any replacement product will be warranted for the remainder of the original warranty period.

### No other warranties

To the maximum extent permitted by applicable law, Atlona Technologies and its suppliers disclaim all other warranties, either expressed or implied, including, but not limited to, implied warranties of merchantability and fitness for a particular purpose, with regard to the product and any related written materials. This Limited Warranty gives customer specific legal rights. Customers may have other rights depending on the jurisdiction.

### No liability for damages

To the maximum extent permitted by applicable law, in no event shall Atlona Technologies or its suppliers be liable for any damages arising out of the use of or inability to use this product, even if Atlona Technologies has been advised of the possibility of such damages. Such damages include but are not limited to: special, incidental, consequential, or indirect damages for personal injury, loss of business profits, business interruption, loss of business information, or any other pecuniary loss. Atlona Technologies' and its suppliers' entire liability under any provision of this agreement shall be limited to the amount actually paid by you for the product. Some Jurisdictions do not allow the exclusion or limitation of liability for consequential or incidental damage. The above limitations may not apply to you in such jurisdictional cases.

## Atlona Product Registration

Thank you for purchasing this Atlona product. - We hope you enjoy it and will take an extra few moments to register your new purchase.

Registration creates an ownership record if your product is lost or stolen and helps ensure you'll receive notification of performance issues and firmware updates.

At Atlona, we respect and protect your privacy, assuring you that your registration information is completely secure. Atlona product registration is completely voluntary and failure to register will not diminish your limited warranty rights.

To register go to: <http://www.atlona.com/registration>