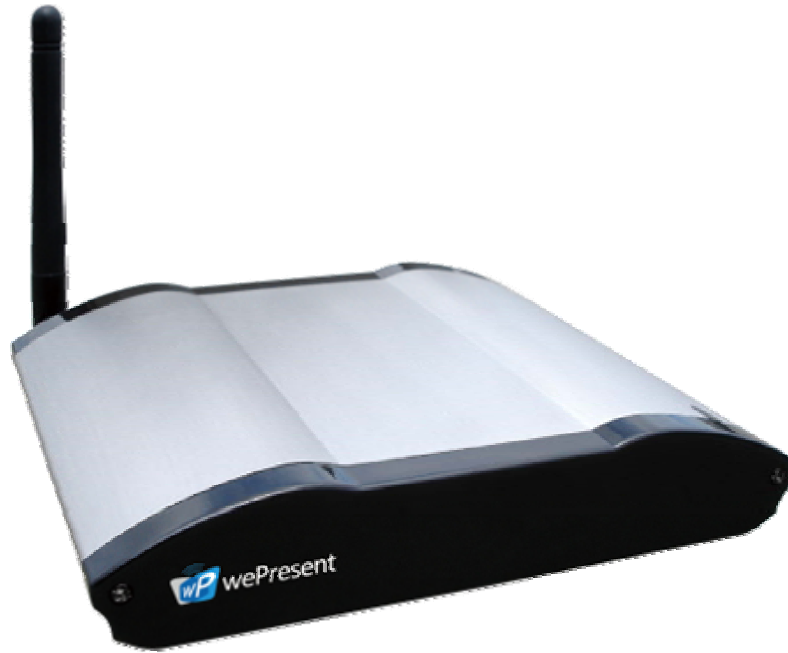




wePresent
Wireless Presentation Adaptor



Wireless Presentation Adaptor

(Model Name:WP-820)

User's Manual

Version: 2.0 Date: Sep. 04, 2008

Table of Contents

1. Overview.....	3
2. Quick Start.....	4
3. Client Utility.....	8
3.1 Starting Program.....	8
3.2 Login.....	9
3.3 Buttons Description.....	9
3.4 Start/Stop Presentation.....	11
3.5 Start / Stop Playing Video.....	12
3.6 Open Admin Web Page.....	13
3.7 Searching Server.....	13
3.8 Repeat.....	14
3.9 Make wePresent Token.....	14
3.10 Magnifier Option.....	16
3.11 System Information.....	17
3.12 wePresent for PDA.....	18
3.13 Exit Program.....	18
4 wePresent for MAC Client.....	18
5. Web Management.....	20
5.1 Home Page.....	20
5.2 Download Software.....	21
5.3 Conference Control.....	22
5.4 Login Web Admin.....	24
5.5 System Status.....	24
5.6 Network Setup.....	25
5.7 Projection Setup.....	27
5.8 Change Passwords.....	28
5.9 Reset to Default.....	28
5.10 Firmware Upgrade.....	29
5.11 Reboot System.....	30
5.12 Logout.....	31

1. Overview

wePresent is a must-have device for your meeting room! It turns your existing "wired" projector into a "high-end wireless" projector. With the revolutionary Plug-and-Show, 4-to-1 split screen and PDA wireless projection features, wePresent makes every of your presentation and meeting efficient and successful.

■ Plug & Show

With the accompanied Plug & Show USB Token, wireless presentation becomes easy! Just link your PC/Laptop to wePresent (through WLAN or Ethernet), plug the token into a USB port, and in seconds, your screen will be wireless projected to the connected projector!

■ 4-to-1 Split Screen Projection

With this 4-to-1 split screen feature, up to four PC screens can be projected to one projector in the same time. Thus you can easily do side-by-side comparison from four PC / PDAs to increase meeting productivity!

■ PDA wireless Projection

You don't have to bring the laptop for business presentation anymore. Just connect your PDA phone to wePresent through WiFi, and start your professional and stylish presentation right away!

■ Conference control

wePresent supports Conference Control function for easily moderating the conference. The conference moderator can control projection from connected PCs through a web-based control page. So you can streamline your meeting/presentation to be more fluent and in order.

■ Magnifier feature

wePresent supports Magnifier feature for codec-free video clips watching experience. By drag and drop the video into magnifier capture region, you will

be able to watch the video on big screen with best experience.

- Macintosh wireless Projection

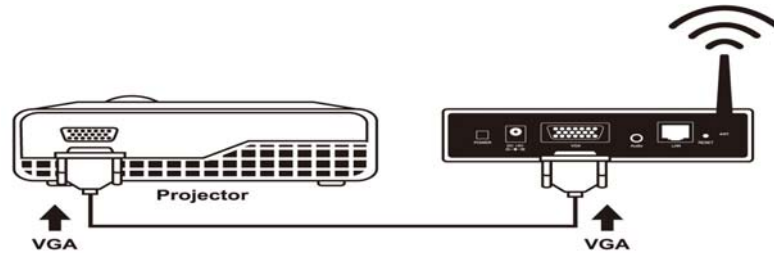
wePresent supports Mac client connected and projected wirelessly. By launching the Mac client software that stored in accompanied USB token, wePresent provide the same experience to Mac user to utilize the wireless presentation feature.

➤ Features

- Support Windows Vista, XP, 2000 and Mobile 5/6
- Plug and Show! No installation required ... just plug in the accompanied token to a USB port, and hassle free presentation can be started in seconds.
- 4-to-1 split screen projection! Turn one projector into four, increase meeting productivity right away.
- PDA wireless projection! PC-less stylish presentation becomes possible!
- Conference control! Allows moderators to streamline grand meetings.
- Provide session security login, wireless WEP key and Gatekeeper function to protect presentation contents and keep good security to office networks.
- Provide magnifier feature to enlarge small video region to playback with full screen.
- Provide media playback feature, support music and video streaming.
- Support Macintosh version 10.4 and above. (Projection feature)

2.Quick Start

- 1) Connect projector VGA cable to wePresent box VGA connector and turn on projector power.

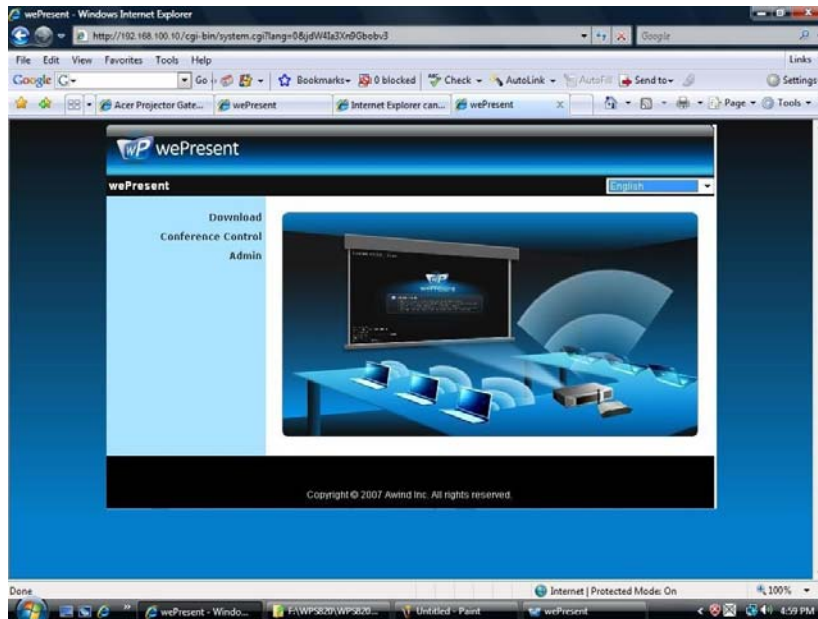


2) Turn on wePresent box.

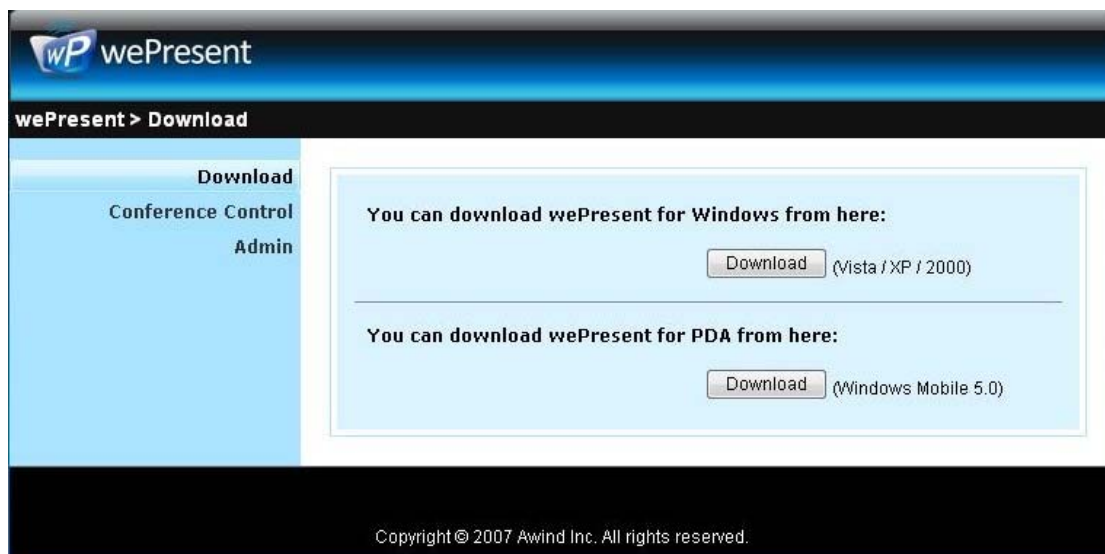
- ◆ When Projector shows the default menu on the screen as below, it indicates the wePresent box is ready now.



- 3) Make sure your PC WLAN is enabled already, and connect your PC with wePresent box.
- 4) Open your browser and it will redirect to wePresent main page automatically, or you can enter the IP address to access the WPS web home page.
- ◆ The default IP address of wePresent is **192.168.100.10** or refers to the IP address shown on the left corner of projector screen.



- 5) Download the client software. Please select the "Windows Vista / XP / 2000" or "Windows Mobile 5.0" and execute the installation program.
 - ◆ After install the program, wePresent shortcut will come out on the PC screen.





6) Make sure your personal firewall allows wePresent software to pass through.

7) Enter the **LOGIN CODE** and

- ◆ You can see the login code on the projector screen



8) Click the **"Play"** button to start projection!





3. Client Utility

3.1 Starting Program

After you download wePresent Windows program via web page successfully, then follow below steps to start.

- 1) Click wePresent icon to execute the program.



- 2) Program start to search for wePresent box automatically,
- 3) If wePresent box founded then **"Login Code"** dialog box will be pop up on the PC screen.

- **Searching for wePresent box**



- **wePresent box is founded and enter login code to start.**



3.2 Login

- 1) After "Login Code" dialog box shown, enter login code to start presentation.
- 2) You can see the login code shown on the projector screen.



3.3 Buttons Description

- 1) After login successfully, you will see main UI of wePresent application.





2) Click following buttons to manipulate wePresent Application.



Presentation Mode



Video Mode



Project desktop screen to Full screen or split screen



Full Screen projection



Project to Split #1



Project to Split #2



Project to Split #3



Project to Split #4



Pause projecting



Stop projecting



Magnifier



Server Login Code



While projecting in progress, this icon is blinking



Start Playing Video



Stop Playing Video



Open Video File



Audio volume



Audio volume strength bar



Video time bar



While playing video, it will be blinking



Function menu



Minimize the program



Exit the program

3.4 Start/Stop Presentation



Click to project desktop (Full screen or split screen)



Click to stop presentation.



Click to pause presentation, which will hide any activities of your PC screen.



Click to enable the magnifier feature. System will enlarge and playback the image within the red rectangle to full screen in higher frame rate.


Ps1. To enable this feature, you need to install Magnifier component first which is stored in the USB token.

Ps2. You need to draw and resize the video size to fit into this rectangle.




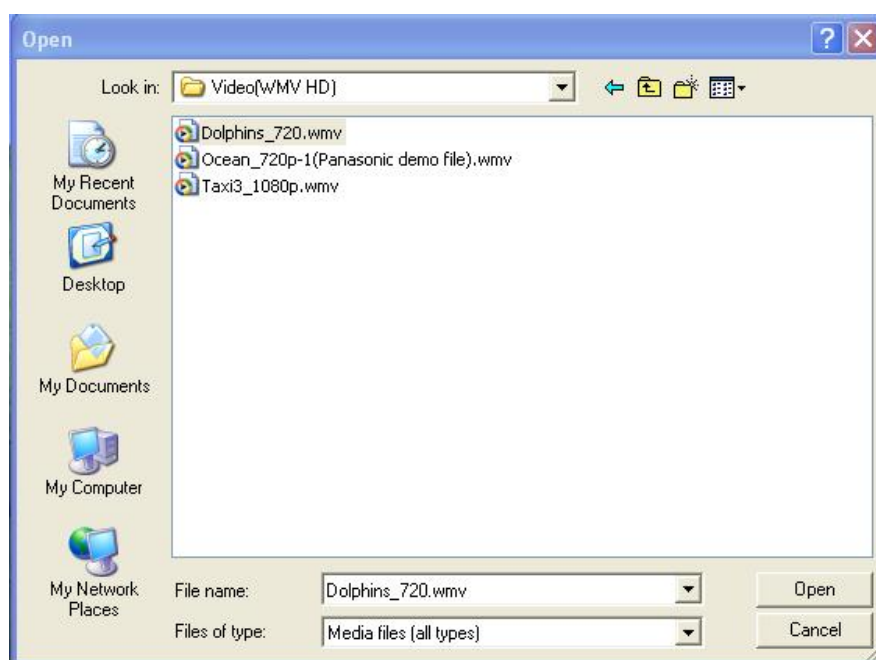


3.5 Start / Stop Playing Video/Music

Click  to switch to Video Mode.




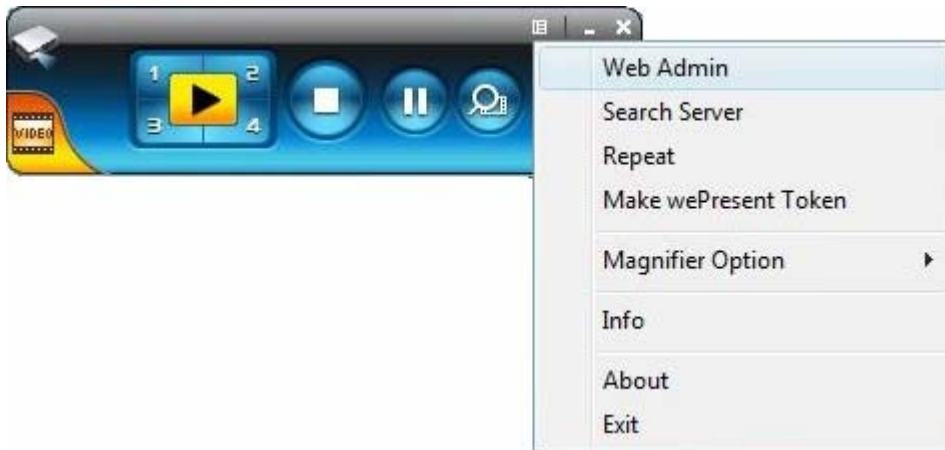
Click  to open the video file and submit to play it.



* Supported Video Format: MPG, MPEG, DAT, VOB, WMV9, ASF, MP3, WAV.

3.6 Open Admin Web Page

Click  to open function menu and select “**Web Admin**” management web page. The web page detailed functions will be described on next chapter.

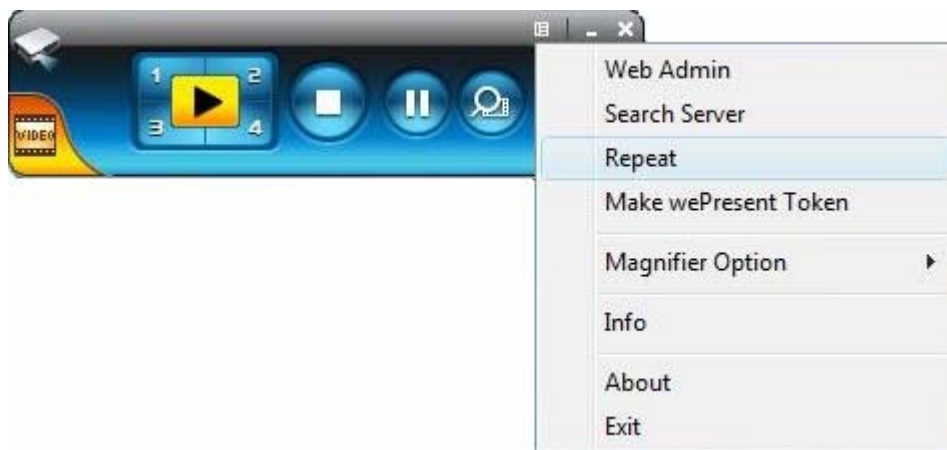


3.7 Searching Server

Click “**Search Server**” to search for wePresent box.

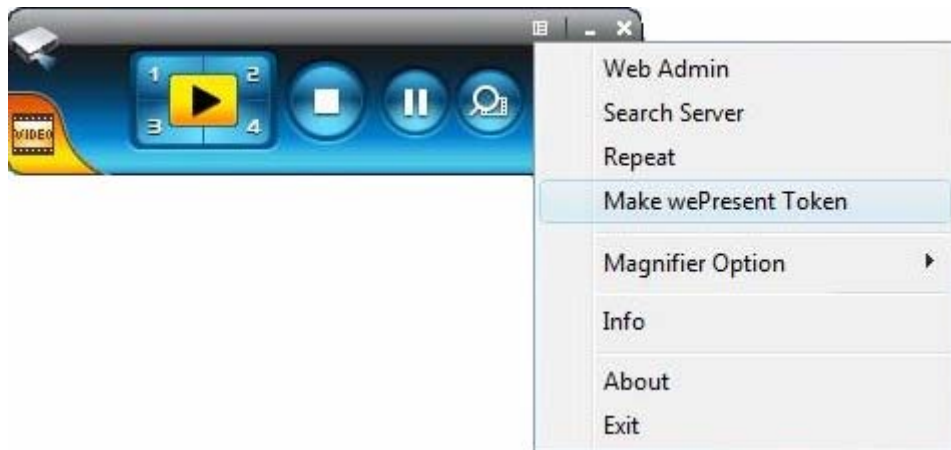


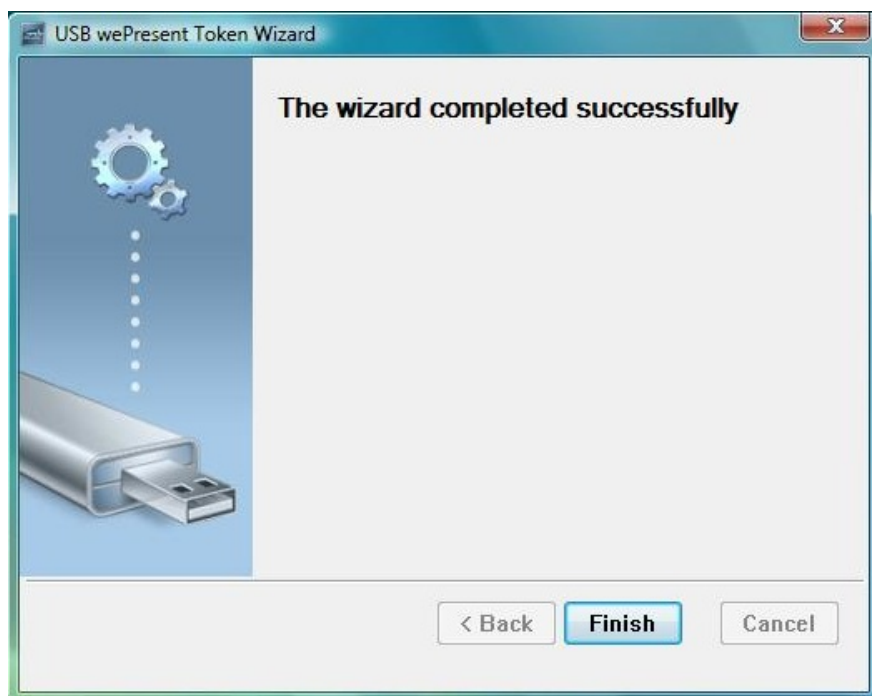
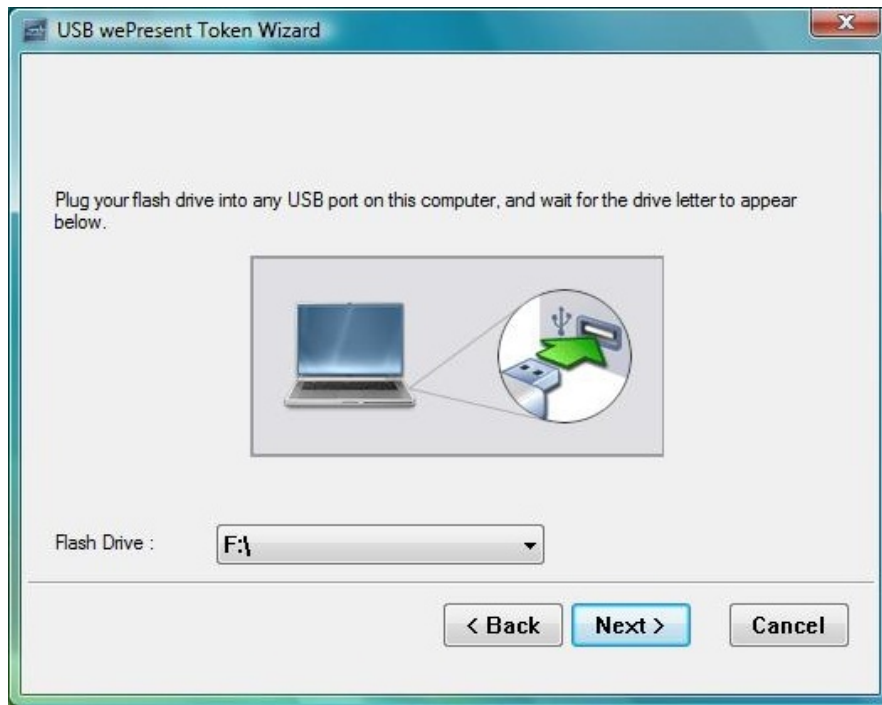
3.8 Repeat



3.9 Make wePresent Token

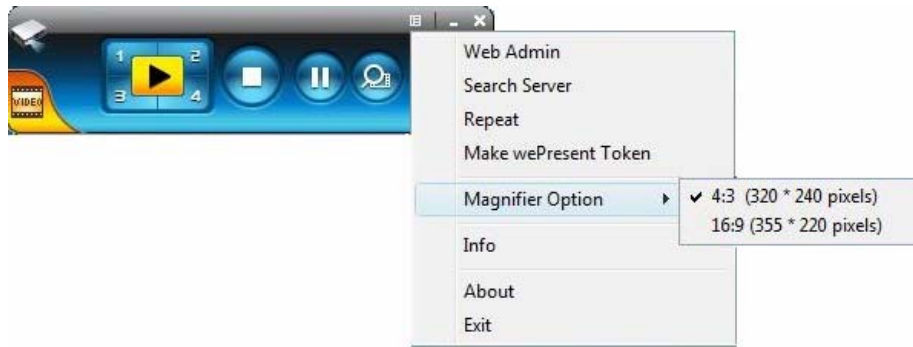
Click “Make wePresent Token” to make a USB wePresent Token, please follow the steps with the wizard:



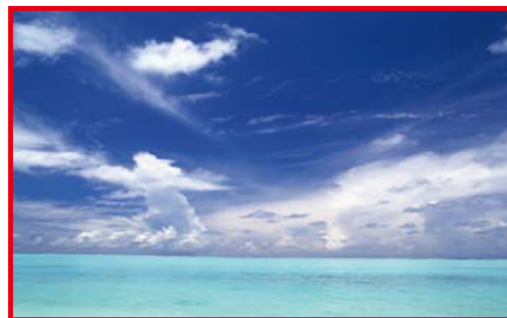


3.10Magnifier Option

Click “Magnifier option” to change the aspect ratio of captured video region with magnifier feature.



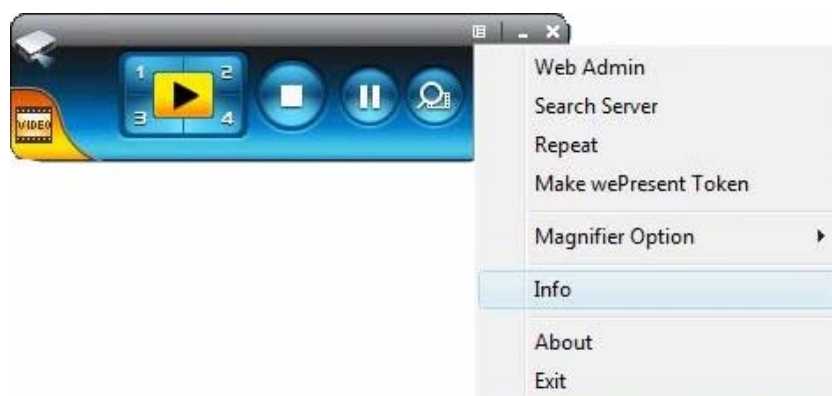
4:3 (320x240 pixels)

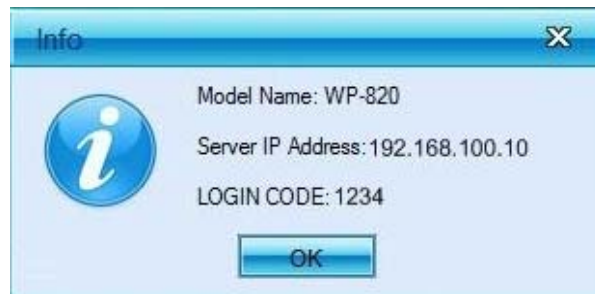


16:9 (355x220 pixels)

3.11 System Information

Click "**Info**" to show system information. It includes product model name, IP address and other information.

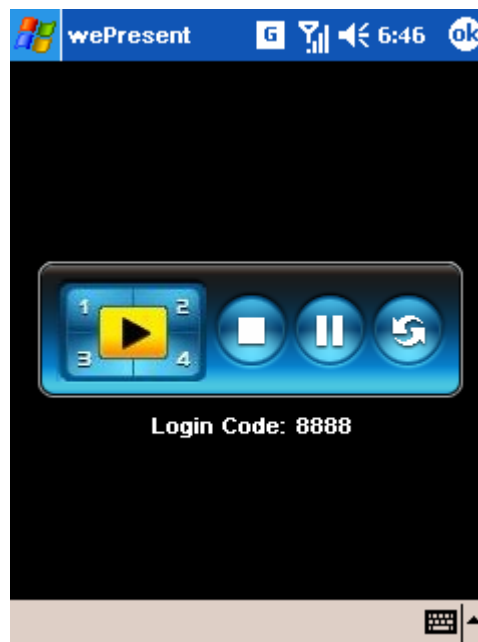





3.12 wePresent for PDA

To project your PDA screen with wePresent, please follow the steps:

- 1) Enable your WiFi and connect to wePresent
- 2) Open the browser and enter Server IP address to download wePresent client software for PDA version.
- 3) Install wePresent client software.
- 4) Launch wePresent software and enter the login code.
- 5) Start Projection.



3.13 Exit Program

Click  to exit this program.

4. wePresent for Mac Client

To project your Mac screen with wePresnet, please follow the steps:

- 1) Enable your WiFi and connect to wePresne device.



- 2) Execute wePresent client software for Mac.



- 3) Launch wePresent software and enter the login code.



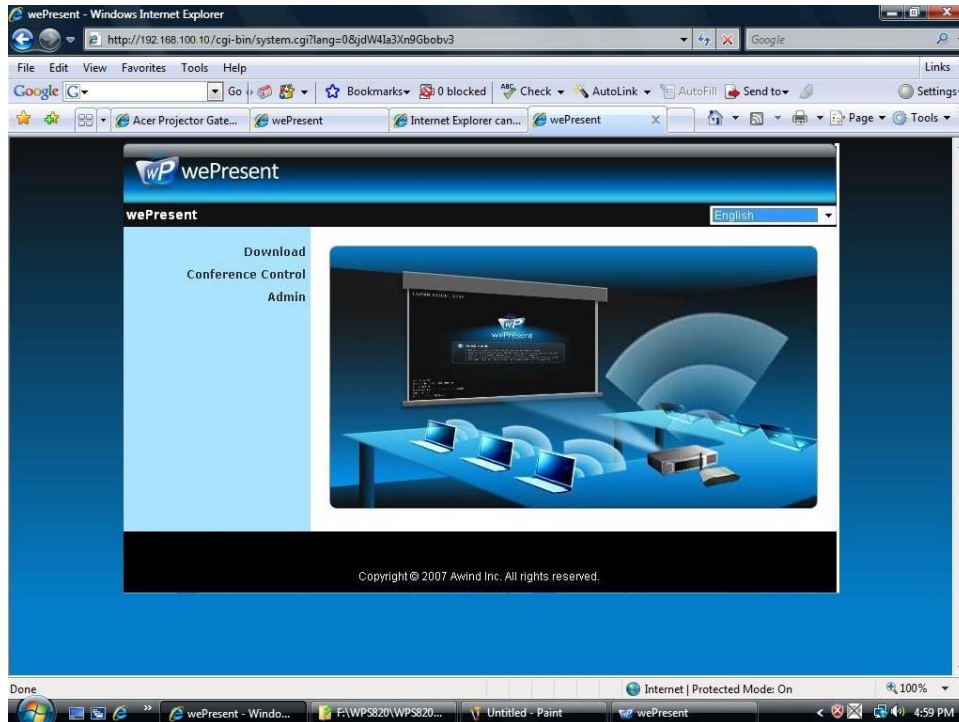
4) Start Projection.



5. Web Management

5.1 Home Page

1. Make sure your PC connect to wePresent box successfully.
2. Open your browser, it will enter wePresent home page automatically.
3. If not, enter your IP address on the browser, you can see the IP on the projector screen.
4. The default IP is 192.168.100.10



5.2 Download Software







1. Select "Download software" function.
2. Please select the "Windows Vista / XP / 2000" or "Windows Mobile 5.0" and execute the installation program.
3. Follow Installation Wizard instructions to proceed till the installation process complete.
4. If pop up "**Windows Security Alert**" because Windows firewall block this program. You just press "**Unblock**" button to continue installation.
5. Once installation complete, a utility shortcut come out on the screen.











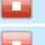

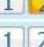

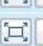
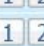
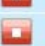





Conference Control

- 1) This function allows you to host a meeting smoothly without projector cable swapping and each participant can show their presentation easily.
- 2) Select "**Conference Control**" function.
- 3) Enter password, the default value is "trainer", and then press [Login].



- 4) After login, you can see a User List on the screen which indicates all of users connected to WEPRESENT box.
- 5) There are three columns, "**Computer Name**", "**Play Control**" and "**IP Address**".
- 6) Play Control , There are six buttons, including Play(Full)  , Play Split #1  , Play Split #2  ,Play Split #3  , Play Split #4  and Stop .
- 7) User List

Computer Name	Play Control	IP address
eunicewu	 1 2 3 4 	192.168.100.12
sandrahsieh	 1 2 3 4 	192.168.100.13
simon_huang	 1 2 3 4 	192.168.100.14
howardling	 1 2 3 4 	192.168.100.15
Jenniferlu	  2 3 4 	192.168.100.16
ashleychuang	 1  2 3 4 	192.168.100.17
firmanwu	 1 2  3 4 	192.168.100.18
ptchou	 1 2 3  4 	192.168.100.19

Login Web Admin



wePresent > Admin

Download
Conference Control
Admin

User Name admin

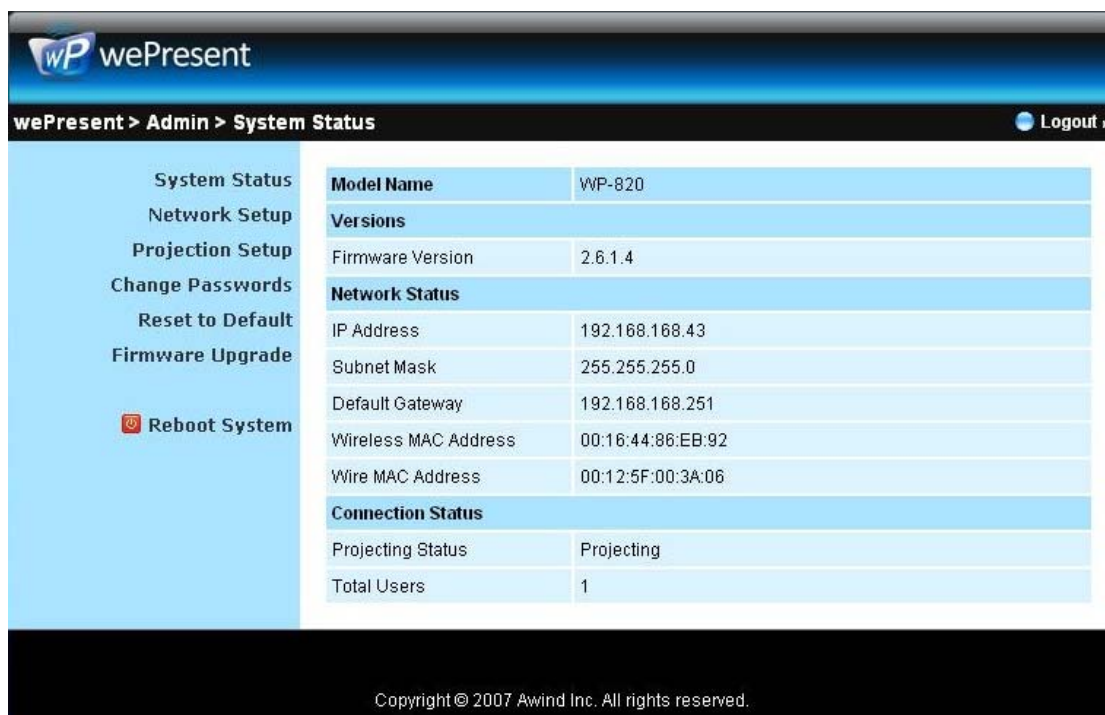
Password

Login

Copyright © 2007 Awind Inc. All rights reserved.

1. Click **[Admin]** and then enter password to login web page.
2. The password default value is "admin".

System Status



wePresent > Admin > System Status Logout

System Status
Network Setup
Projection Setup
Change Passwords
Reset to Default
Firmware Upgrade
Reboot System

Model Name	WP-820
Versions	
Firmware Version	2.6.1.4
Network Status	
IP Address	192.168.168.43
Subnet Mask	255.255.255.0
Default Gateway	192.168.168.251
Wireless MAC Address	00:16:44:86:EB:92
Wire MAC Address	00:12:5F:00:3A:06
Connection Status	
Projecting Status	Projecting
Total Users	1

Copyright © 2007 Awind Inc. All rights reserved.

Click **[System Status]**, shows current system status.

Model Name: Product model name

Versions:

1. **Firmware version no.:** Product firmware version number.

Network Status:

1. **IP address** : IP address of WPS device.
2. **Subnet Mask** : subnet mask
3. **Default Gateway** : default gateway
4. **Wireless MAC address** : wireless MAC address
5. **Wire MAC address** : wire MAC address

Connection Status:

1. **Projecting status**: which is "Waiting for projecting" or "Projecting"
2. **Total Users**: It shows how many users login into wePresent box.

Network Setup

There are many kinds of operating configurations as below.

The screenshot shows the 'wePresent' web interface for 'Network Setup'. The breadcrumb trail is 'wePresent > Admin > Network Setup'. A 'Logout' link is in the top right. On the left sidebar, there are links for 'System Status', 'Network Setup' (highlighted), 'Projection Setup', 'Change Passwords', 'Reset to Default', 'Firmware Upgrade', and a 'Reboot System' button. The main content area is divided into four sections: 'IP Setup', 'DHCP Server Setup', 'Wireless Setup', and 'GateKeeper'. 'IP Setup' has radio buttons for 'Obtain an IP address automatically' (selected) and 'Use the following IP address:'. Below are input fields for IP Address (192.168.100.10), Subnet Mask (255.255.255.0), and Default Gateway (192.168.100.10). 'DHCP Server Setup' has radio buttons for 'Auto' (selected) and 'Disable', followed by 'Start IP' (192.168.100.11) and 'End IP' (192.168.100.254). 'Wireless Setup' includes 'Wireless LAN' (Enable selected), 'Region' (WORLDWIDE), 'SSID' (wePresent), 'SSID Broadcast' (Enable selected), 'Channel' (Auto), 'WEP' (Disable), and a 'Key' field. 'GateKeeper' has radio buttons for 'All Pass', 'All Block', and 'Internet Only(port 80 & 443)' (selected). 'Apply' and 'Cancel' buttons are at the bottom right. A copyright notice 'Copyright © 2007 Awind Inc. All rights reserved.' is at the very bottom.

Section	Configuration	Value
IP Setup	Obtain an IP address automatically	<input checked="" type="radio"/>
	Use the following IP address:	<input type="radio"/>
	IP Address	192 . 168 . 100 . 10
Subnet Mask		255 . 255 . 255 . 0
	Default Gateway	192 . 168 . 100 . 10
	DHCP Server Setup	Auto
Disable		<input type="radio"/>
Start IP		192 . 168 . 100 . 11
	End IP	192 . 168 . 100 . 254
Wireless Setup	Wireless LAN	<input checked="" type="radio"/> Enable <input type="radio"/> Disable
	Region	---- WORLDWIDE ----
	SSID	wePresent
	SSID Broadcast	<input checked="" type="radio"/> Enable <input type="radio"/> Disable
	Channel	Auto
	WEP	Disable
	Key	
GateKeeper	All Pass	<input type="radio"/>
	All Block	<input type="radio"/>
	Internet Only(port 80 & 443)	<input checked="" type="radio"/>

< Auto-Configuration Network Setup >

The default setting of the wePresent box is DHCP client. When the wePresent box is connected to a LAN that already has a DHCP server present, the wePresent box

takes an IP address assigned to it by the server. When the wePresent box is connected to a LAN that does not have a DHCP server, the wePresent box becomes the DHCP server in the network.

< IP Setup>

- ◆ You can select "obtain IP address automatically" or "Use the following IP address"
- ◆ IP Address: The default value is 192.168.100.10.
- ◆ Subnet Mask: The default value is 255.255.255.0
- ◆ Default Gateway: The default value is 192.168.100.10

<DHCP Server Setup>

- ◆ You can select "auto(Enable/Disable DHCP Server" or "Disable")
- ◆ Start IP: The start IP address of DHCP Server.
- ◆ End IP: The end IP address of DHCP Server.

< Wireless Setup>

- ◆ Region: default value is "Worldwide".
- ◆ SSID: SSID string, max. Length is 32 bytes.
- ◆ Channel: to set fixed channel or Auto. The "Auto" means after power on wePresent, it will scan all of wireless channel and select clear one channel automatically.
- ◆ WEP: you can Disable WEP key or select one of 64bit or 128bit in ASCII or HEX string.
- ◆ Key: If WEP is enabled, you have to set key value according to WEP mode you selected.

< Gatekeeper>

Gatekeeper is designed for ensuring the enterprise network security within wePresent box

- ◆ All Block can block Guest Users(through wireless) to access all office network(LAN),
- ◆ All Allow can pass Guest Users(through wireless) to access all office network
- ◆ Internet Only can block Guest Users (through wireless) from office network (LAN) but still reserve internet connection capability.

<Apply >: press button to select this mode

<Cancel>: press button to abort action.

<Back>: Back to Operating mode main menu

Projection Setup

wePresent > Admin > Projection Setup

System Status
Network Setup
Projection Setup
Change Passwords
Reset to Default
Firmware Upgrade
Reboot System

Projection Setup

Resolution	XGA (1024x768)
Color Depth	Normal (16 bit)
Screen Refresh Rate	60 Hz
Login Code	<input type="radio"/> Disable <input checked="" type="radio"/> Random <input type="radio"/> Use the following code <input type="text"/>

Apply Cancel

Copyright © 2007 Awind Inc. All rights reserved.

Click **[Projection Setup]** button

- ◆ **<Resolution>**: 1024*768, 1280x768 and 800*600.
- ◆ **<Color Depth>**: provide wePresent output with 16bit or 32 bit color depth. It depends on your PC settings.
- ◆ **<Screen Refresh Rate>**: This is VGA output refresh rate, provides 60 Hz and 75Hz to suit for different kinds of projectors.
- ◆ **<Login Code>**: You can select "Disable", "Random", or "Use the following code" to set a specified 4-characters Number.
- ◆ **<Apply>** : Confirmation and Save modifications
- ◆ **<Cancel>**: Cancel all the modifications

Change Passwords



wePresent > Admin > Change Passwords Logout »

System Status
Network Setup
Projection Setup
Change Passwords
Reset to Default
Firmware Upgrade
Reboot System

Conference Control

Enter New Password	<input type="text"/>	Apply
Confirm New Password	<input type="text"/>	

Admin

Enter New Password	<input type="text"/>	Apply
Confirm New Password	<input type="text"/>	

Copyright © 2007 Awind Inc. All rights reserved.

Click [**Change Password**] button, to change password value.

- ◆ **<Enter New Password>**: enter new password you want to change for each category.
- ◆ **<Confirm New Password>**: double confirm new password.
- ◆ **<Apply>**: Confirmation and Save modifications.

Reset to Default



wePresent > Admin > Reset to Default Logout »

System Status
Network Setup
Projection Setup
Change Passwords
Reset to Default
Firmware Upgrade
Reboot System

 **Reset to Default**
This will restore the device to the factory default settings.

Apply

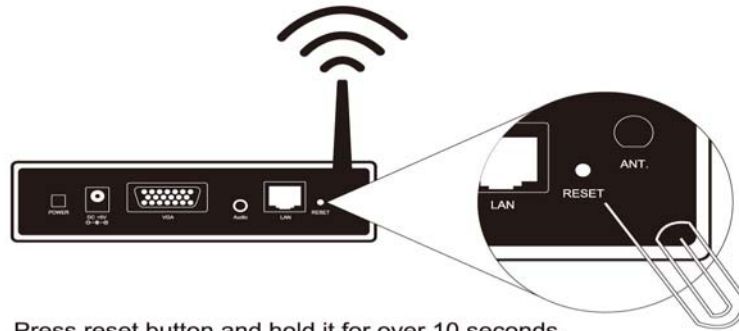
Copyright © 2007 Awind Inc. All rights reserved.

Click [**Reset to Default**] button to restore factory default settings.

<Apply>: Confirmation and action.

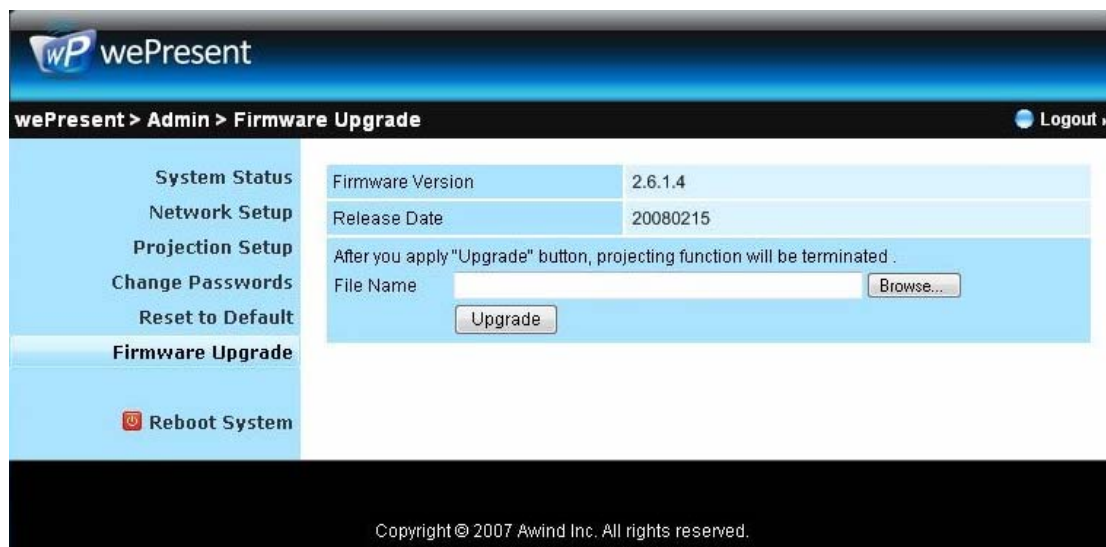
*** Another way to restore Factory Default Settings, Follow below procedures.

1. Press **[Reset]** button and **Hold**.
2. Turn on wePresent box.
3. Wait for over 10 seconds and relief **[Reset]** button.
4. It will take effect to restore factory default settings.



Press reset button and hold it for over 10 seconds.

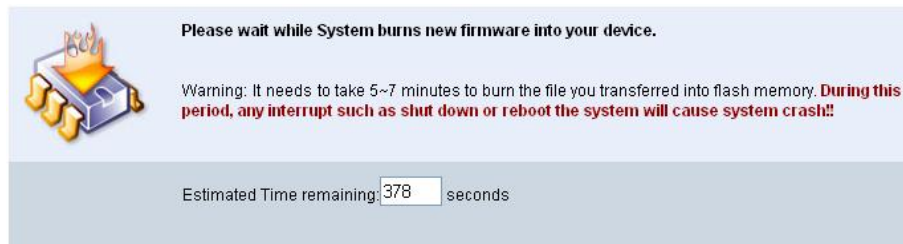
Firmware Upgrade




Click **[Firmware Upgrade]** button to upgrade firmware.

1. Firstly, you have to get latest firmware image file from your vendor.
2. Click **<Browse>** to specify file name you want to upgrade.
3. Click **<Upgrade>** to start.
4. A warning message shown and count down counter on the screen.
5. After a few minutes, a complete message shown on the screen.

6. Restart wePresent box to take effect.



 **Warning:** Don't power off wePresent while firmware upgrade in progress, otherwise will cause your Box doesn't work and have to return device to your vendor for fixing.

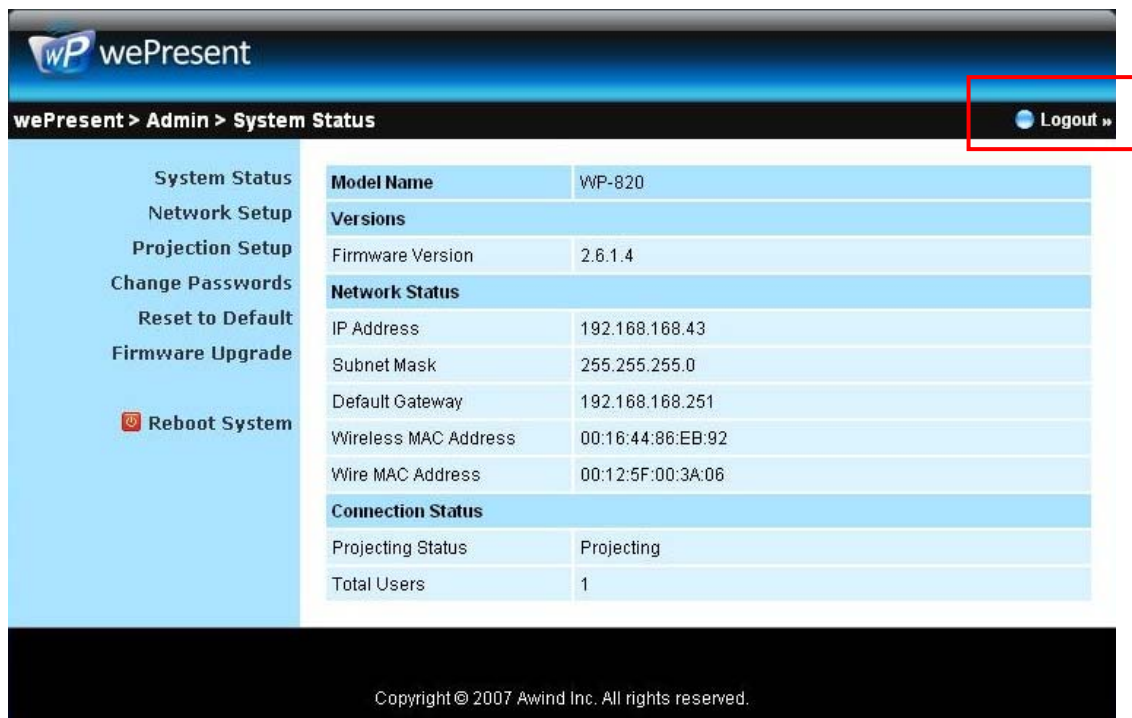
Reboot System



Click **[Reboot System]** button, to restart system


- ◆ **<Reboot>**: reboot system automatically.

Logout



The screenshot shows the wePresent Admin interface. The top navigation bar includes the wePresent logo and a breadcrumb trail: **wePresent > Admin > System Status**. In the top right corner, a **Logout »** button is highlighted with a red rectangle. The main content area is divided into a left sidebar and a right table.

Left Sidebar (System Management Options):

- System Status
- Network Setup
- Projection Setup
- Change Passwords
- Reset to Default
- Firmware Upgrade
-  **Reboot System**

Right Table (System Information):

Model Name	WP-820
Versions	
Firmware Version	2.6.1.4
Network Status	
IP Address	192.168.168.43
Subnet Mask	255.255.255.0
Default Gateway	192.168.168.251
Wireless MAC Address	00:16:44:86:EB:92
Wire MAC Address	00:12:5F:00:3A:06
Connection Status	
Projecting Status	Projecting
Total Users	1

Footer: Copyright © 2007 Awind Inc. All rights reserved.