



Installer's Guide

IMPORTANT INFORMATION

Read This Document First

On completion, sign and leave with owner

endurance[®]*six* Gas continuous flow water heater

Models: 26XL
 26XN

Installation by a licensed tradesperson and in accordance with:

- AS/NZS 3500.4 "National Plumbing & Drainage Code Hot Water Supply Systems – Acceptable Solutions"
- AS5601/AG601 Gas Installation
- Adherence to local authority and OH&S regulations
- Victorian PIC Requirements



For advice, repairs and service, call:

1300 365 115 (Australia)
0800 729 389 (New Zealand)

Specifications and materials may change without notice
Effective for Endurance continuous flow water heaters manufactured and sold after 1st Sept 2009.

Part No: IG090701
Version: B

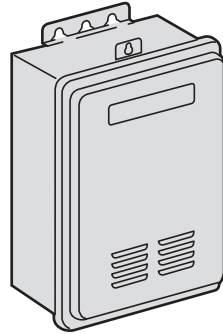


Installation Guide

Step 1

- Arrive at site, park vehicle as close as allowable to installation, and conduct a safety audit.
- Safety audits can also be known as Work Method Statements (WMS) or Job Site Analysis (JSA).

Note – do not commence a job where the risks can't be controlled.



Step 2

- The existing water heater (if applicable) should be drained and removed in a responsible manner.

Note: Do not drain on to grass or garden beds.

Step 3

- **This heater is approved for outdoor installation only – it is not suitable for indoor use.**
- Safely install new heater in an appropriate location, in accordance with all plumbing and building regulations.



Refer to AS5601 for detailed installation instructions

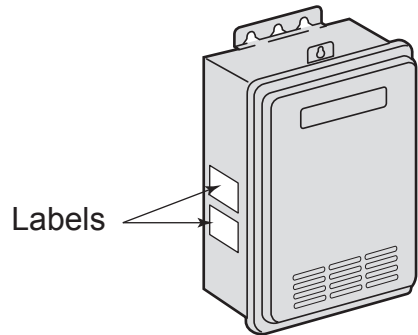


Installation Guide

- Refer to the *Owner's Manual* and AG 601 for detailed installation instructions.
- Plan hot water pipework to ensure optimum flow rates to all outlets.

Step 4

- Check labels located on the unit's side for:
 - a. maximum inlet water pressure; a Pressure Limiting Valve may be required.
 - b. gas supply pressure requirements (minimums = 1.13kPa for Natural Gas, 2.75kPa for LPG)
 - c. gas type – is the unit set up for the gas supplied to the property?
- Ensure that the property's gas meter is able to supply sufficient volume of gas and pressure in the event of all gas appliances on site operating simultaneously at maximum gas consumption levels. For LPG installations, confirm bottle size is adequate. This water heater uses 199 MJ/h of gas.





Installation Guide

Step 5

Water Connection

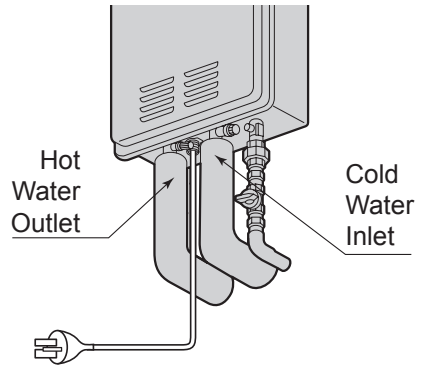
- Using correct plumbing methods, connect the cold water pipe to the heater.

Note: According to local regulations and the plumbing code, fit any and all valves that are necessary e.g. tempering valves, pressure limiting valves, duo valves, cold water expansion valves etc. We recommend the use of new valves for all Installation. Please refer plumbing code and/or local requirements.

- A Gate Valve or Ball Valve must be used on the cold water inlet to the water heater.

This requirement is an Australia wide requirement under the national plumbing code.

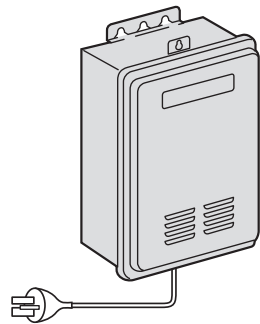
- Stop taps or combination stop taps and non-return valves are not to be used!



Step 6

Electrical Connection

- Continuous electrical power must be supplied to the water heater. This ensures correct performance of the unit.



240 Volt
Continuous Power Supply



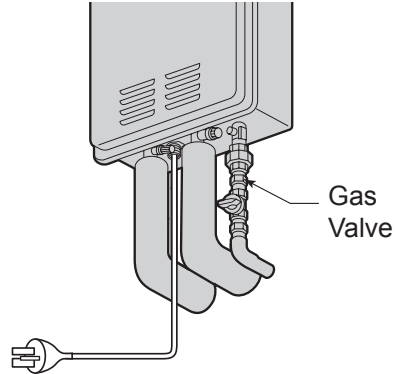
Installation Guide

Step 7

Gas Connection

- Fit a union to the water heater gas inlet for easy connection and removal. The thread diameter is R $\frac{3}{4}$ /20.
 - Fit an AGA approved isolating gas cock in the supply line adjacent to the water heater gas connection.
 - Ensure that the supply pipe and the gas pressure regulator (LPG or Natural Gas) has sufficient flow capacity for this and other appliances connected to the fitting line. Refer to AG 601 for size of pipe.
 - For LPG appliances, ensure that gas cylinders are of sufficient size. The water heater alone will require a regulator of 4kg per hour capacity.
 - Before connecting the appliance to the gas service, purge any debris or air from the gas service. Venting of purged gas shall be an area free of sources of ignition.
- Close the isolating gas cock prior to connection of the appliance.
- After connection, check all joints for leaks with an approved leak tester.

Refer to AG 601 Installations Standard for pipe sizing details. For your assistance, we have included the pipe sizing from AG 601 for copper tube using Natural Gas in the table in the margin.



Nominal Pipe Size in mm	Straight Length Of Pipe Metres	Hourly Rate in MJ/h
13	4	43.0
18	4	82.2
20	4	142.0
25	4	313.0

Note: The Endurance six requires 199 MJ/h for the customer to get the full performance benefit.



Step 8

- This unit has a preset temperature of 50°C.
- If controllers are installed, the maximum temperature setting will still be 50°C.

Step 9

- Make sure there is water inside the unit prior to turning on the power. This can be achieved by turning on the tap.

Step 10

- If the water heater has been installed correctly, when the power is turned on the heater will go through initialisation. This will take a few seconds.
- If a fault occurs, please refer to the *Owner's Manual*.
- The gas valve must be checked for gas pressure during operation.
- The test point pressure should be set in accordance with the pressure rating marked on the data plate label, located on the side of the heater.
- Commission appliance and check safe and correct operation of the appliance.





Installation Guide

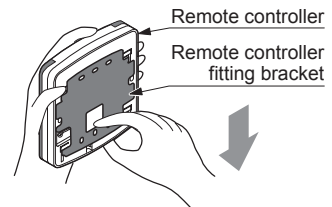
Step 11

Installation Of Main Remote Control

- Detach the fitting bracket from Main remote controller by sliding it down.
- Attach the fitting plate to wall.
- Install conduit inside of wall in advance and secure the wiring box.
- Pass remote controller cables through conduit.
- Then pass the cables through the hole of the fitting bracket and pull them out.
- Attach the fitting bracket with screws adjusting the screw hole to the wiring box.
- Connect the remote controller cables to the terminal for the remote controller of PCB.
- If controllers are installed, the maximum temperature setting will still be 50°C.



Main Remote Control
Model CMR-2252





Installation Guide

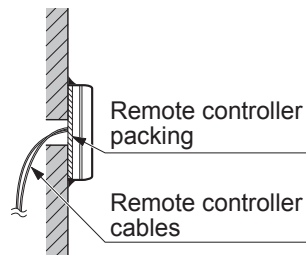
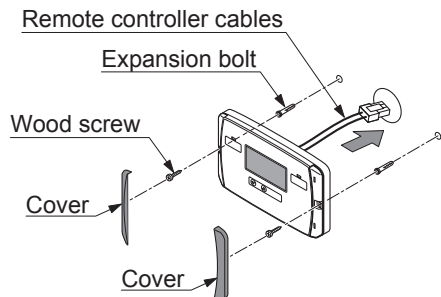
Step 12

Installation of Shower Remote Control

- Drill a hole (more than diameter about 12mm) in a wall for the remote controller cables.
- After passing the remote controller cables through the hole, remove the packing's back paper of remote controller. Then attach the remote controller to the wall.
- Detach both end covers of remote controller and fix the remote controller to the wall with wood screws (2 pcs) in the screw holes provided. (You can detach the covers with catching the bottom corner's slot with nail.)
- Do not tighten the screws excessively, as the screw hole may be damaged. In case of mounting the remote controller on tile, cement or mortar, use an expansion bolt.



Shower Remote Control
Model YST-2252





Installation Declaration

Location of Installation:
.....
.....

Tank Serial Number:

Tank Model Number:

Date Installed:

Dux Hot Water terms and conditions of warranty will only apply if the below is signed by the installer. This notifies Dux Hot Water that all the requirements of proper installation have been carried out by the installer in accordance with the Dux Hot Water Installation Commissioning Checklist and all other requirements noted in the Dux Hot Water Owner's Manual supplied with the solar water heater.

Upon completion of installation, this document should be given to the home owner in its entirety. When required by Dux Hot Water the home owner will provide this document as evidence that the installation of the solar water heater was carried out in accordance with Dux Hot Water installation requirements.

Declaration

I have installed the Dux Hot Water solar water heater in accordance with the above instructions. If the instructions have not been followed then I understand that the Dux Hot Water terms and conditions of warranty will be void.

Name:

Signed:

Company:

Date:







Installer's Guide – Endurance six™

endurance[®]
six
Gas continuous flow water heater

Models: 26XL
 26XN

For advice, repairs and service, call:

1300 365 115 (Australia)

0800 729 389 (New Zealand)



INSTRUCTIONS FOR UNITS SUPPLIED SET AT 50°C TO COMPLY WITH AS 3498-2009.

PLEASE NOTE THIS 50°C UNIT IS NOT TO BE USED IN CONJUNCTION WITH SOLAR WATER HEATERS.

- 1) This water heater is to be installed to comply with AS/NZS 3500.4 and AS5601 codes and any local by laws or regulations.
- 2) Please refer to the Installation / Operating instructions supplied with this water heater for details of the installation procedure.
- 3) When installing the water heater hot water pipework please refer to the following pipework installation requirements (Diagram 1) to comply with the AS3498-2009 code. The first outlet valve (tap) should be a minimum of Four (4) metres from the water heater outlet.

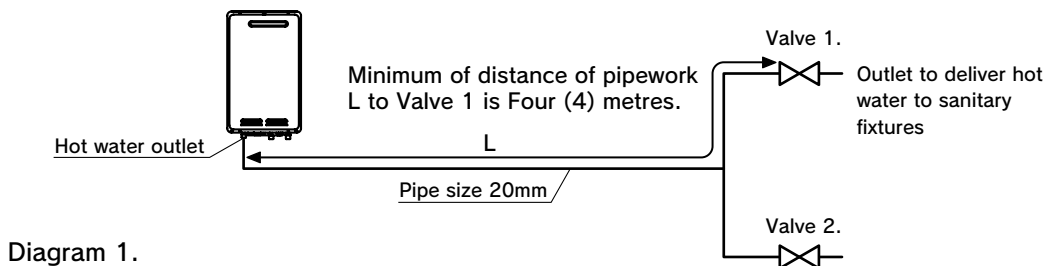


Diagram 1.

The hot water supply pipework is required to be insulated with Ensolex or similar insulation from the hot water heater to all outlet points within the building.

COMMISSIONING THE WATER HEATER.

- 1) After completion of the water heater installation the following commissioning procedure is to be implemented.
 - a) Before turning on the water heater power supply and gas supply, purge all air from the Hot water supply pipework.
 - b) Turn on the power, allow 30 seconds for the water heater to check safety functions. Turn on the gas supply.
 - c) Turn on Valve 1. to a minimum flow rate (approximately 3 l/m) and allow the water heater to operate for approximately Two(2) minutes and check the flowing water temperature using a digital thermometer.
 - d) Repeat above procedure (c) at the maximum possible flow rate.
 - e) The water temperature will be delivered at 48-50°C continuously.
 - f) If the water heater does not deliver water at this temperature contact your supplier or DUX Hot Water on 1300 365 115 for advice.

PLEASE SEE REVERSE SIDE.

MR PLUMBER.

PLEASE NOTE this Dux Endurance unit is supplied factory set at 50°C outlet hot water temperature to comply with the requirements of AS 3498-2009.

This Endurance hot water unit does not require a tempering valve to be installed.

Installation instructions.

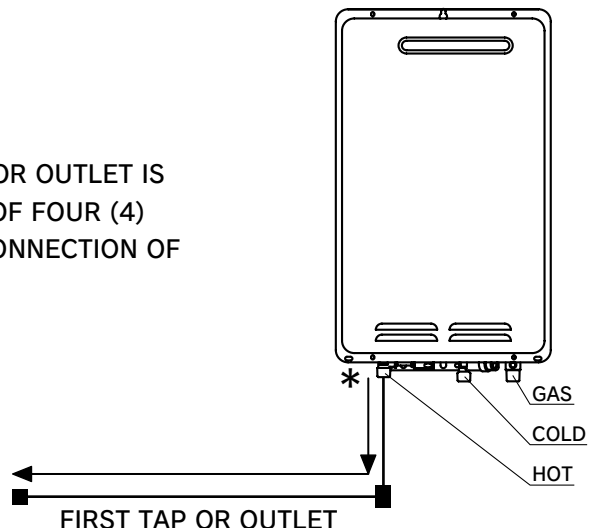
Please follow all the installation instructions in the Dux Endurance Installation and operating instructions handbook and the following additional instructions for the Hot water outlet connection.

1. When connecting the hot water supply to the fixtures in the property a minimum of Four (4) Metres of pipework must be used between the outlet of the Dux Endurance water heater and the first tap and outlet. See Diagram below 1.

* Pipe size is nominal 18 mm from hot water outlet to the first tap or outlet.

TOTAL LENGTH TO FIRST TAP OR OUTLET IS REQUIRED TO BE A MINIMUM OF FOUR (4) METRES FROM THE OUTLET CONNECTION OF THE WATER HEATER.

Diagram 1.



2. The Hot water line should be insulated with Ensolex or similar pipe insulation.
3. When the installation is completed the temperature is to be tested at the taps to confirm the water temperature does not exceed the required 50°C setting.

PLEASE SEE REVERSE SIDE.