

---

# INSTALLATION INSTRUCTIONS

---

## HIGH EFFICIENCY PACKAGED AIR CONDITIONER

**MODELS**  
**P1124A2**  
**P1130A2**  
**P1136A2**



Bard Manufacturing Company  
Bryan, Ohio 43506

*Since 1914...Moving ahead, just  
as planned.*

Manual : 2100-323  
File: Volume II Tab 10  
Date: 01-28-98

# Contents

---

<b>Getting Other Informations and Publications .....</b>	<b>1</b>
<b>General Instructions .....</b>	<b>4</b>
Important .....	4
Shipping Damage .....	4
Field-Installed Heater Packages (Optional) .....	4
<b>Installation .....</b>	<b>6</b>
Location .....	6
Typical Installations .....	6
Condensate Drain Trap .....	9
Air Filters .....	9
Wiring – Main Power .....	10
Wiring – 24V Low Voltage Control Circuit .....	10
Transformer Taps .....	10
Thermostats .....	10
<b>Start Up and Operation .....</b>	<b>11</b>
Three Phase Scroll Compressor Start Up Information .....	11
Sequence of Operation .....	11
Start Up Notes .....	11
High Pressure Switch and Lockout Relay .....	11
<b>Service and Troubleshooting .....</b>	<b>12</b>
Service Hints .....	12
Pressure Service Ports .....	12
Refrigerant Charge .....	12
Fan Blade Settings .....	12
Suction and Discharge Tube Brazing .....	12
Pressure Table .....	13
Wiring Diagrams .....	14

## Figures

Figure 1	Prefabricated Rood Curb Specifications .....	5
Figure 2	Field Fabricated Curbing .....	5
Figure 3	Elevated Mounting Platforms .....	7
Figure 4	Airflow and Service Access Clearances .....	7
Figure 5	Roof Top Application .....	8
Figure 6	Slab Mounting at Ground Level .....	8
Figure 7	Condensate Drain Trap .....	9
Figure 8	Low Voltage Wiring .....	10
Figure 9	Fan Blade Setting Dimensions .....	12
Figure 10	Brazing Diagram .....	13

## Tables

Table 1	Electrical Data .....	2
Table 2	Optional Field Installed Heater Packages .....	2
Table 3	Optional Field Installed Heater Table .....	3
Table 4	Rated CFM and Rated ESP .....	6
Table 5	Air Filter Area and Size .....	9
Table 6	Thermostat Wire Size .....	10
Table 7	Wall Thermostat and Subbase Combinations .....	10
Table 8	Refrigerant Charge .....	12
Table 9	Pressure Table .....	13

# Getting Other Information and Publications

These publications can help you install the air conditioner or heat pump. You can usually find these at your local library or purchase them directly from the publisher. Be sure to consult current edition of each standard.

National Electrical Code ..... ANSI/NFPA 70

Standard for the Installation ..... ANSI/NFPA 90A  
of Air Conditioning and  
Ventilating Systems

Standard for Warm Air ..... ANSI/NFPA 90B  
Heating and Air  
Conditioning Systems

Load Calculation for ..... ACCA Manual J  
Residential Winter and  
Summer Air Conditioning

Duct Design for Residential ..... ACCA Manual D  
Winter and Summer Air Conditioning  
and Equipment Selection

## For more information, contact these publishers:

**ACCA — Air Conditioning Contractors of America**  
1712 New Hampshire Ave. N.W.  
Washington, DC 20009  
Telephone: (202) 483-9370  
Fax: (202) 234-4721

**ANSI — American National Standards Institute**  
11 West Street, 13th Floor  
New York, NY 10036  
Telephone: (212) 642-4900  
Fax: (212) 302-1286

**ASHRAE — American Society of Heating  
Refrigerating, and  
Air Conditioning Engineers, Incorporated**  
1791 Tullie Circle, N.E.  
Atlanta, GA 30329-2305  
Telephone: (404) 636-8400  
Fax: (404) 321-5478

**NFPA — National Fire Protection Association**  
Batterymarch Park  
P.O. Box 9101  
Quincy, MA 02269-9901  
Telephone: (800) 344-3555  
Fax: (617) 984-7057

**TABLE 1  
ELECTRICAL DATA**

Model	Rated Volts & Phases	③ HZ	Operating Voltage Range	Maximum Unit Amps	① Maximum External Fuses or Ckt. Brk.	Minimum Circuit Ampacity	② Field Power Wiring	② Ground Wire Size
					Ckt. A		Ckt. A	Ckt. A
P1124A2	230/208-1	60	197 - 253	12.9	25	17	10	10
P1130A2	230/208-1	60	197 - 253	17.6	30	21	10	10
P1136A2	230/208-1	60	197 - 253	19.4	40	25	8	10
P1136A1-B	230/208-3	60	197 - 253	14.8	25	18	10	10
P1136A1-C	460	60	414 - 506	7.1	15	12	14	14

- ① Maximum time delay fuse or HACR type circuit breaker.
- ② 75 degree C cooper wire size, basic unit only.
- ③ 50 HZ equipment not UL listed.

**TABLE 2  
OPTIONAL FIELD INSTALLED HEATER PACKAGES  
ONLY TO BE USED WITH THE AIR CONDITIONING MODEL INDICATED**

Heater Package Model No.	Volts and Phase	P1124A2	P1130A2	P1136A2	P1136A1-B	P1136A1-C
EH3PB-A05	240/1	S	S	S	A	A
EH3PB-A08		S	S	S	A	A
EH3PB-A10		S	S	S	A	A
EH3PB-A15		S	S	S	A	A
EH3PB-B09	240/3	A	A	A	S	A
EH3PB-B15		A	A	A	S	A
EH3PB-C09	460/3		A	A	A	S
EH3PB-C15			A	A	A	S

- S – Standard application – Heater volts and phase same as basic unit
- A – Alternate application – Heater volts and phase different from basic unit

**TABLE 3  
OPTIONAL FIELD-INSTALLED ELECTRIC HEATER TABLE**

Heater Pkg. Model No.	Unit Volts Phase	Htr. KW & Capacity @ 240V (or 480V if applicable)		Htr. KW & Capacity @ 208 Volts		@ 240V or 480V as applicable Htr. Amps	Heater Internal Fuses	Circuit B					
		KW	BTUH	KW	BTUH			No. Field Ckts.	Minimum Circuit Ampacity	①	Field Power Wiring	②	Ground Wire Size
										Maximum Overcurrent Protection		③	
EH3PB-A05	240/208-1	5	17,100	3.75	12,800	20.8		1	26	30	10	10	
EH3PB-A08	240/208-1	8	27,300	6.0	20,500	33.3		1	42	45	8	10	
EH3PB-A10	240/208-1	10	34,100	7.5	26,000	41.7		1	53	60	6	10	
EH3PB-A15	240/208-1	15	51,200	11.25	38,400	62.5	30/60	1	79	80	4	8	
EH3PB-B09	240/208-3	9	30,700	6.75	23,000	21.7		1	28	30	10	10	
EH3PB-B15	240/208-3	15	51,200	11.25	38,400	36.2		1	46	50	8	10	
EH3PB-C09	460/3	9	30,700	--	--	10.8		1	14	15	14	14	
EH3PB-C15	460/3	15	51,200	--	--	18.0		1	23	25	10	10	

- ① Time delay fuses or "HACR Type" circuit breakers must be used for 60 and smaller sizes. Standard fuses or circuit breakers are suitable for sizes 70 and larger.
- ② Based on wire suitable for 75° C. Other wiring materials must be rated for marked "Minimum Circuit Ampacity" or greater.
- ③ Based upon Table 250-95 of N.E.C. 1993. See electrical data for basic heat pump for Circuit A wiring specification requirements.

*IMPORTANT: While this electrical data is presented as a guide, it is important to electrically connect properly size fuses and conductor wires in accordance with the National Electrical Code and all existing local codes.*

# GENERAL INSTRUCTIONS

---

## IMPORTANT

The equipment covered in this manual is to be installed by trained, experienced service and installation technicians. All duct work, supply and return ducts, must be properly sized for the design air flow requirement of the equipment. ACCA is an excellent guide to proper sizing. All duct work or portions thereof not in the conditioned space should be properly insulated in order to both conserve energy and prevent condensation or moisture damage.

## SHIPPING DAMAGE

Upon receipt of equipment, the carton should be checked for external signs of shipping damage. If damage is found, the receiving party must contact the last carrier immediately, preferably in writing, requesting inspection by the carrier's agent.

## GENERAL

The refrigerant system is completely assembled and charged. All internal wiring is complete.

The unit is designed for use with or without duct work. Flanges are provided for attaching the supply and return ducts.

These instructions explain the recommended method to install the air cooled self-contained unit and the electrical wiring connections to the unit.

These instructions and any instructions packaged with any separate equipment required to make up the entire air conditioning system should be carefully read before beginning the installation. Note particularly "Starting Procedure" and any tags and/or labels attached to the equipment.

While these instructions are intended as a general recommended guide, they do not supersede any national and/or local codes in any way. Authorities having jurisdiction should be consulted before the installation is made.

## FIELD INSTALLED HEATER PACKAGES (OPTIONAL)

These packaged air conditioners are manufactured without supplementary electric heaters. Supplementary heaters EH3PB series (to fit P1124A2, P1130A2, and P1136A2) are available for simple, fast, field installation.

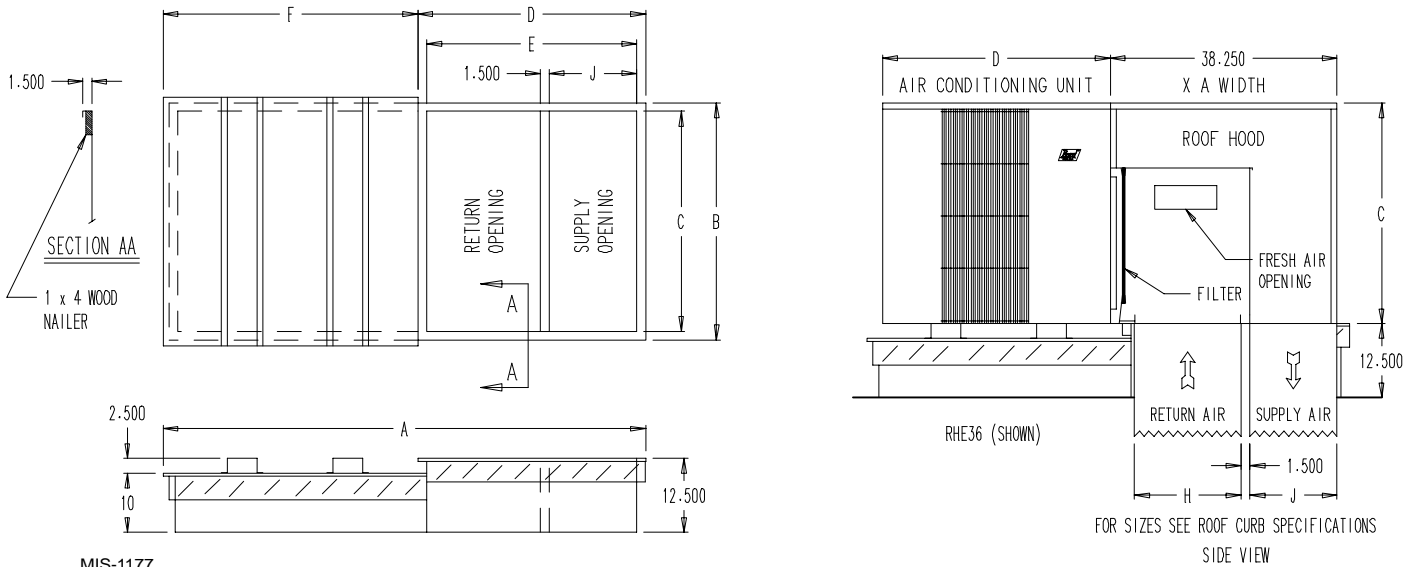
A separate field power circuit is required for the supplementary heaters.

*IMPORTANT: Refer to Table 4 when designing duct work for maximum available static pressure with heater installed.*

Refer to the electrical data shown on pages 2 and 3 for proper application information on all available heater combinations and what units they can be used with. It also shows the applicable circuit ampacities, fuse size, and wire size for each heater combination.

Refer to the installation instructions packed with the heater for details on how to insert it into the basic unit.

**FIGURE 1  
 PREFABRICATED ROOF CURB SPECIFICATIONS  
 HEAVY GAUGE GALVANIZED WITH WOOD NAILING STRIP, WELDED/LEAKPROOF  
 ONE PIECE CONSTRUCTION – READY TO INSTALL**



MIS-1177

**CURB AND ROOF DETAILS**

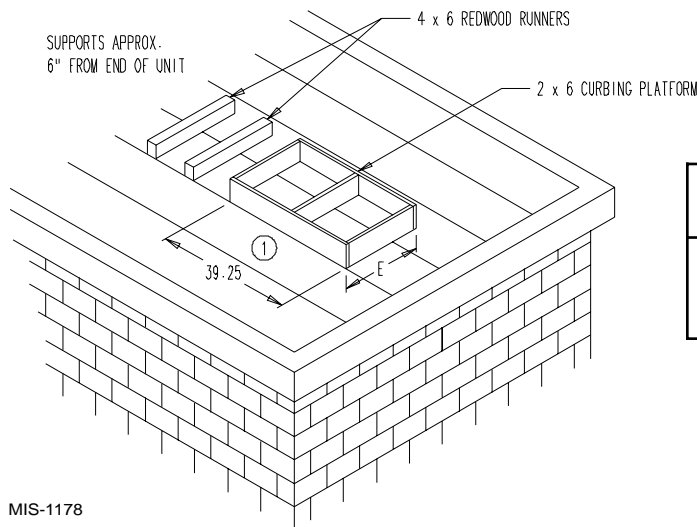
Roof Curb	A	B	C*	D	E	F	J*	H*	Roof Hood Model	Air Conditioning Units
9042-003	80-3/8	40-1/4	37-1/4	38-3/8	35-3/8	42	14-3/4	19-1/8	RHE36	P1124A2, P1130A2, P1136A2

\*Duct Sizing Information

Return Air Dimension "C" is length  
 Return Air Dimension "H" is width

Supply Air Dimension "C" is length  
 Supply Air Dimension "J" is width

**FIGURE 2  
 FIELD FABRICATED CURBING**



MIS-1178

Roof Hood Model	Unit Model	E
RHE36	P1124A2 P1130A2 P1136A2	41

① A SEPARATE METAL FLASHING SHOULD BE INSTALLED AROUND WOOD CURBING. CAULK & SEAL ALL JOINTS & WEATHERPROOF.

# INSTALLATION

## LOCATION

### GENERAL

The unit must be located outside, or in a well ventilated area. It must not be in the space being heated or cooled. A sound absorbing material should be considered if the unit is to be installed in such a position or location that might cause transmission of sound or vibration to the living area or adjacent buildings.

### SLAB MOUNTING

In areas where winter temperatures *DO NOT* go below 32° F for periods over twelve hours, the unit may be slab mounted at grade level. When installing unit at grade level, install on a concrete slab at least four inches above finished grade level. Slab should have a slope tolerance away from the building structure of at least 1/4 inch per foot, while being level from side to side. Place slab in a location where runoff water from higher ground will not collect around unit. See Figure 3.

A minimum of 18 inches should be provided between the coil inlet and any building surfaces. Provide at least four feet between coil outlet and any building wall, fences or other vertical structures. Provide a minimum of three feet clearance on the service access side of the unit. See Figure 4

### ROOF MOUNTING

When a unit is installed in areas where low ambient temperatures or strong winter winds exist, it should be placed for prevailing winter winds are not in direct line with the outdoor coil. If this is not possible, a wind barrier should be constructed. Place barrier 24 inches from the coil inlet side of the unit and in the direction of prevailing winds. Size barrier at least the same height and width as the unit. This may be necessary on ground level installations, also. See Figure 5.

### WINTER INSTALLATION BELOW 32°F

In areas where winter conditions go below 32°F for extended periods, the unit must be elevated above the mounting surface to prevent snowfall or defrost ice accumulation from interfering with the operation of the unit. A minimum of twelve inch elevation is recommended, while greater elevation may be required for areas of high snow accumulation. Poured concrete, steel framework, brick, cement block, etc., can be utilized to construct a suitable raised mounting platform. See Figure 6.

### DUCT WORK

Refer to Table 4 when designing duct work for maximum static pressure available with the specific model and heater package being installed.

TABLE 4  
RATED CFM AND  
EXTERNAL STATIC PRESSURE (ESP)  
WET COIL (COOLING)

Model	Rated CFM	Rated ESP	Recommended Air Flow Range
P1124A2	800	.20	720 - 880 CFM
P1130A2	1150	.35	1020 - 1275 CFM
P1136A2	1275	.30	1150 - 1400 CFM

## TYPICAL INSTALLATIONS

- ROOF MOUNTED** – The unit is mounted on a sturdy base on the roof of the building. Return air to the unit is brought through a single return grille (grilles with built-in filters are best since they enable easy access for filter changing). Return air ducts are attached to the lower section of the front panel. Supply air is brought from the unit to attic duct work or to a furred down hall. Supply air duct is attached to the top of the front panel.

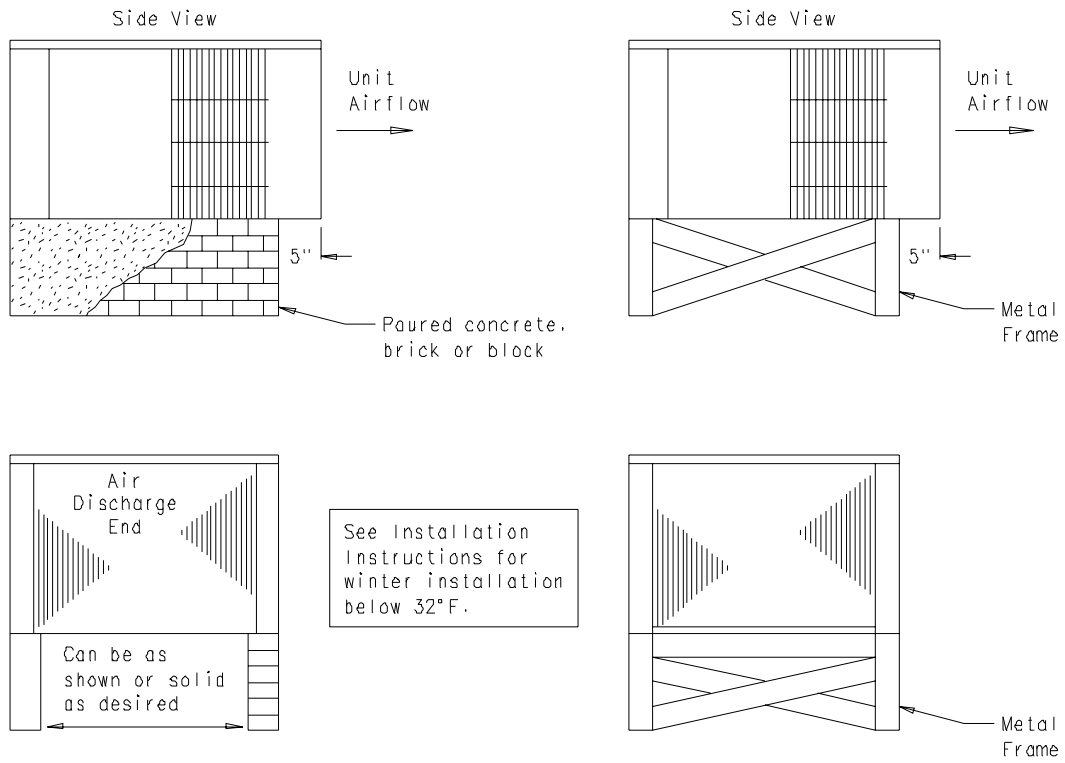
*CAUTION: All outdoor duct work must be thoroughly insulated and weatherproofed. All attic duct work must be thoroughly insulated. Two inch thick insulation with suitable vapor barrier is recommended for both outdoor and attic runs.*

In roof top installation, as in all installations, the unit must be level from side to side. However, the unit should have a pitch along the length to assure complete external drainage of precipitation.

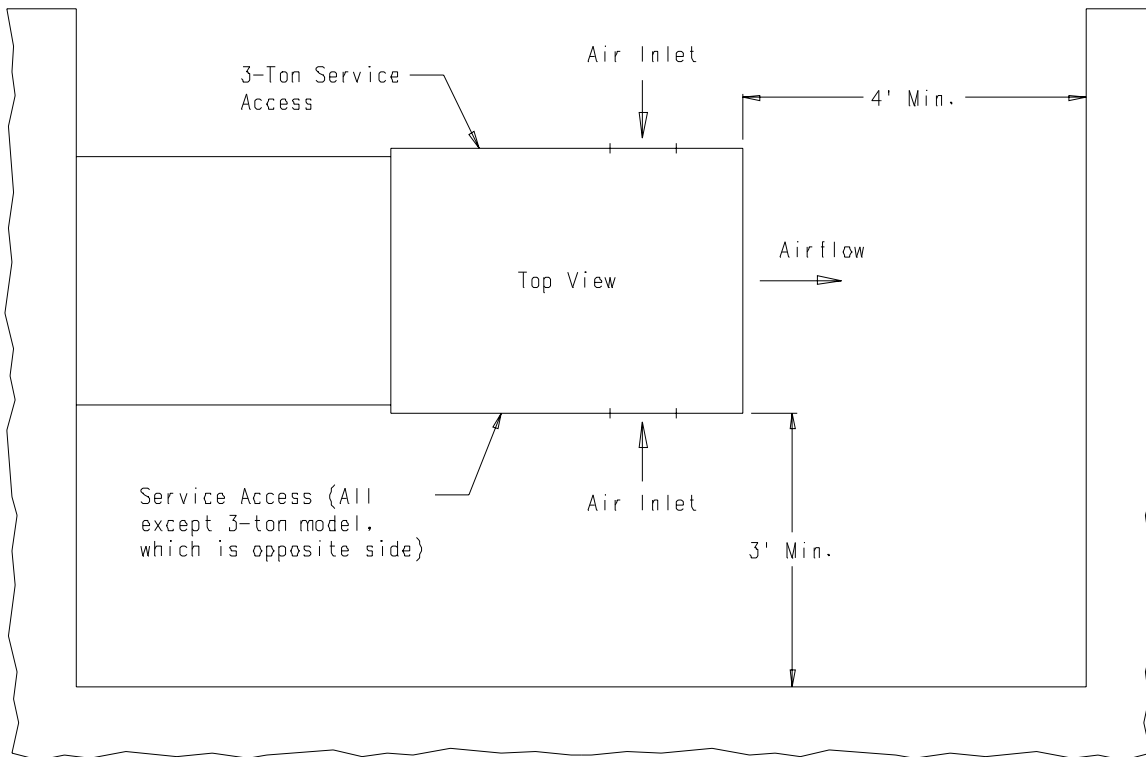
- CRAWL SPACE** – Duct work installed in crawl space must be well insulated and provided with a vapor barrier. In addition, the crawl space must be thoroughly ventilated and provided with a good vapor barrier as a ground cover. It is most desirable to install the unit outdoors rather than inside the crawl space, so that it will be readily accessible for service.
- SLAB MOUNTED AT GROUND LEVEL** – This type installation is ideal for homes with a slab floor construction where a roof mounted unit is not desired. The supply and return duct work can be run through a furred closet space.
- THROUGH THE WALL** – This type installation requires a suitable framework to be fabricated capable of withstanding the unit weight. Normally the unit will be insulated so as to minimize supply and return duct work.



**FIGURE 3  
ELEVATED MOUNTING PLATFORMS**

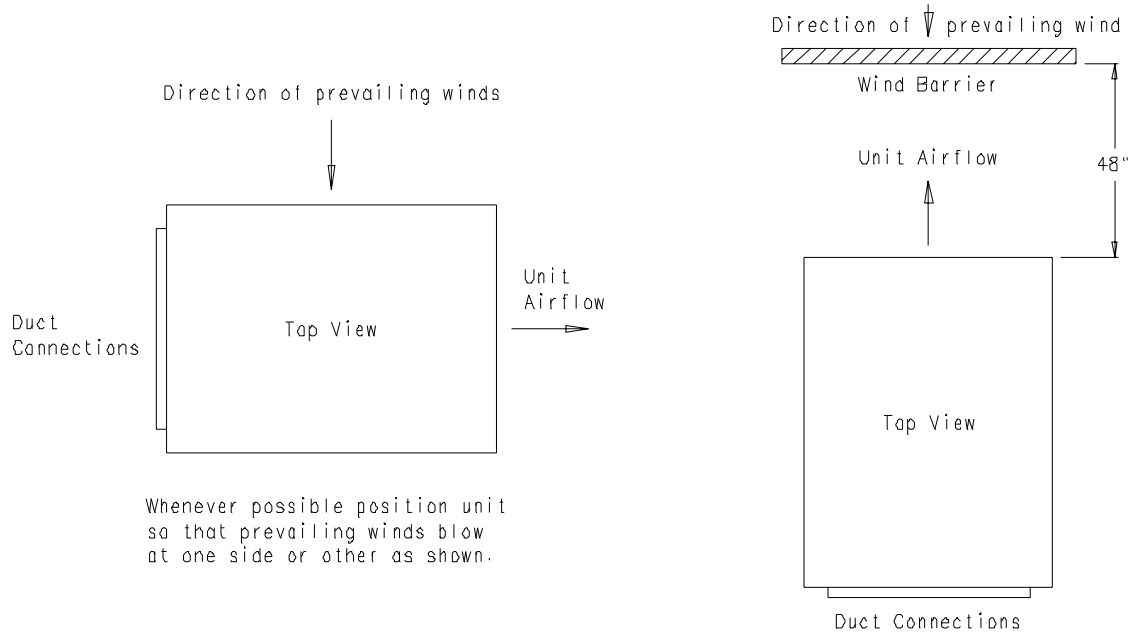


**FIGURE 4  
AIRFLOW and SERVICE ACCESS CLEARANCES**



MIS-1185

**FIGURE 5**  
**ROOF TOP APPLICATION**  
 (May also be required for ground level installations.)

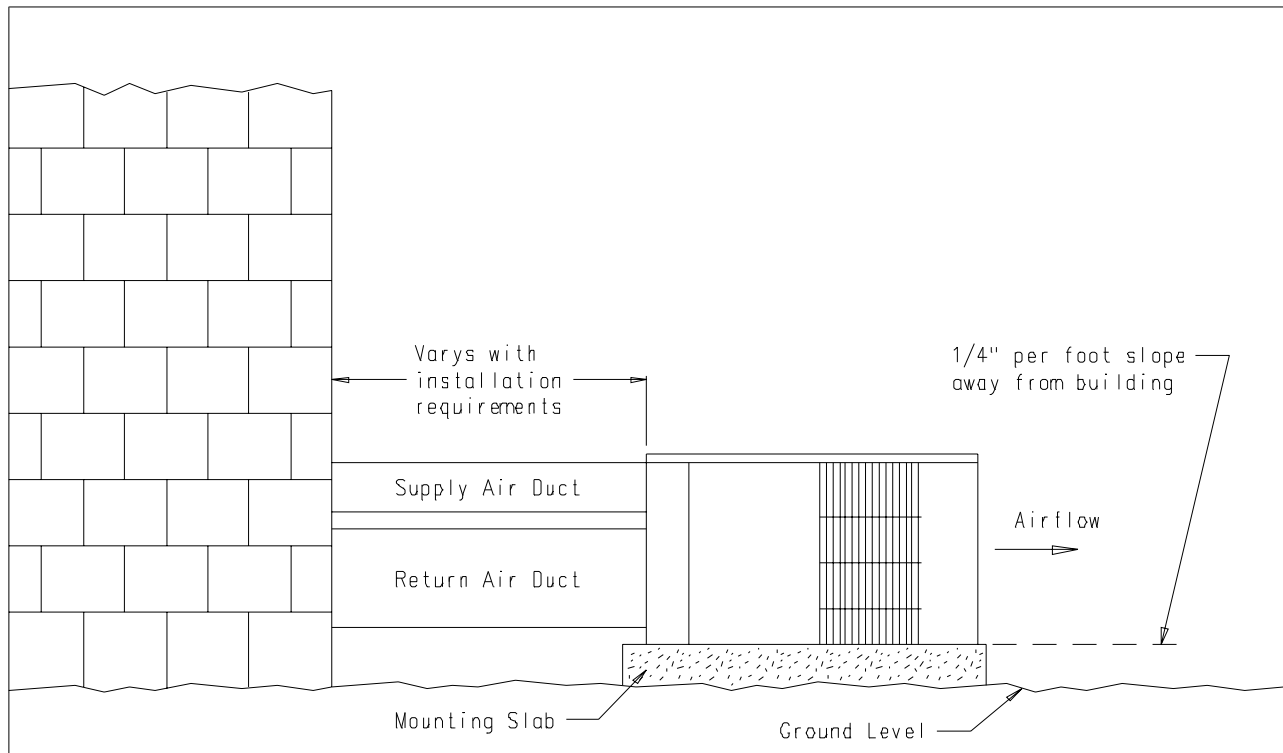


Whenever possible position unit so that prevailing winds blow at one side or other as shown.

If outdoor coil must face prevailing wind, construct a wind barrier to secure proper defrost.

MIS-1176

**FIGURE 6**  
**SLAB MOUNTING AT GROUND LEVEL**  
 (Above 32° F Outside Temperature)



MIS-1184

5. OTHER INSTALLATIONS – Many other installations are possible with the packaged air conditioner. No matter what the installation, always consider the following facts:
- A. Insure that the discharge air is not obstructed in any way so as to cause operation difficulties.
  - B. The indoor coil drain pan is equipped with a coupling that must be piped through a condensate drain trap to a suitable drain.
  - C. Always mount the unit in such a position that it may be easily reached for servicing and maintenance.
  - D. Insure that the unit is clear so that proper air flow over the outdoor coil will be maintained.

If this unit is operated in cooling below a 65° outdoor ambient temperature, the installation of low ambient controls (CMA-6) to unit is required.

### CONDENSATE DRAIN TRAP

It is very important to provide a trap in the condensate drain line to allow a positive liquid seal in the line and assure correct drainage from the coil condensate pan.

Install condensate drain trap shown in Figure 7. Use drain connection size or larger. Do not operate unit without trap. Unit must be level or slightly inclined toward drain. With a trap installed on a unit located in an unconditioned area, water in the trap may freeze. It is recommended that the trap material be of a type that will allow for expansion of water when it freezes.

### AIR FILTERS

Air filters for the return air side of the system are not provided as part of these models, and must be field supplied and installed as part of the final installation.

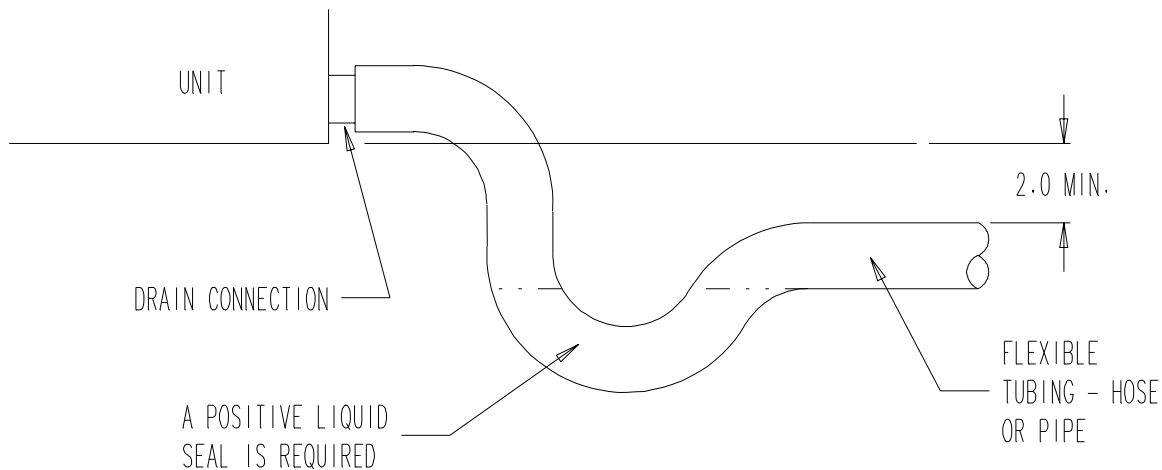
Prior thought should be given to return air location and placement of the air filter(s). The air filter(s) must be of adequate size and readily accessible to the operator of the equipment. Filters must be adequate in size and properly maintained for proper operation. If this is not done, excessive energy use, poor performance, and multiple service problems will result. *It is impossible to oversize air filters.* Generous sizing will result in cleaner air and coils as well as lower operating costs and extend the time between required changes. Table 5 shows minimum filter areas and recommended filter sizes. Actual filter sizes can vary with the installation due to single or multiple returns utilizing a filter/grille arrangement or being placed immediately ahead of the indoor coil face in the return air duct.

TABLE 5

Model	Minimum Filter Areas	Recommended Size
P1124A2 P1130A2 P1136A2	462 square inches (3.21 square feet)	15 x 30-5/8 x 1

*NOTE: If roof hood accessory is to be used, information on air filters may be found under that heading in this manual. Air filters are supplied as part of that package.*

FIGURE 7  
CONDENSATE DRAIN TRAP



MIS-136

## WIRING – MAIN POWER

Refer to the unit rating plate for wire sizing information and maximum fuse size. Each outdoor unit is marked with a “Minimum Circuit Ampacity”. This means that the field wiring used must be sized to carry that amount of current. If field installed heaters are added to the basic unit, a second separate power supply circuit will be required. The heater rating plate located adjacent to the basic unit rating plate will show the appropriate circuit ampacity fuse size, etc. (Also see “Electrical Data” on pages 2 and 3.) *All models are suitable for connection with copper wire only.* These instructions **must** be adhered to. Refer to the National Electrical Code for complete current carrying capacity data on the various insulation grades of wiring material.

The electrical specifications on page 2 and 3 lists fuse and wire sizes (75°F copper) for all models including the most commonly used heater sizes.

The unit rating plate lists a “Maximum Time Delay Fuse” or “HACR” type circuit breaker that is to be used with the equipment. The correct size must be used for proper circuit protection and also to assure that there will be no nuisance tripping due to the momentary high starting current of the compressor.

## WIRING – 24V LOW VOLTAGE CONTROL CIRCUIT

Five (5) wires should be run from thermostat subbase to the 24V terminal board in the unit. A five conductor, 18 gauge copper, color-coded thermostat cable is recommended. The connection points are shown in Figure 8.

## THERMOSTATS

See specific wiring information for the different models, heater KWs, and voltages on pages 14 through 18.

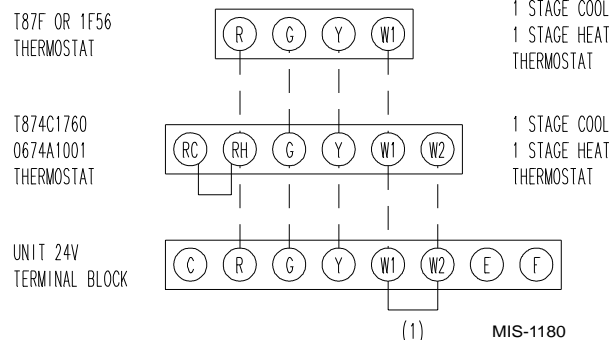
**TABLE 7  
WALL THERMOSTAT and SUBBASE COMBINATIONS**

Thermostat	Subbase	Predominant Feature
8403-019 ② (T874C1760)	8404-012 (Q674A1001)	1 stage cool, 2 stage heat System: heat-auto-cool Fan: on-auto
8403-002 ① (T87F3111)	8403-003 (Q539A1220)	1 stage heat, 1 stage cool System: heat-off-cool Fan: on-auto
8403-009 (1F56-318)	-----	1 stage heat, 1 stage cool System: heat-off-cool Fan: on-auto

- ① No automatic changeover position – must be manually placed in heat or cool. Reversing valve remains energized at all times system switch is in heat position (except during defrost cycle). No pressure equalization noise when thermostat is satisfied on either heating or cooling.
- ② Allows thermostat to control both heating and cooling operation when set in “AUTO” position. Reversing valve de-energizes at end of each “ON” heating cycle.

**IMPORTANT NOTE:** Only the thermostat and subbase combinations as shown above will work with this equipment. The thermostat and subbase **MUST** be matched, and correct operation can be assured only by proper selection and application of these parts.

**FIGURE 8 – LOW VOLTAGE WIRING**



(1) Remove jumper for 2 stage electric heat on units with 15 or more KW

**TABLE 6 – THERMOSTAT WIRE SIZE**

Transformer VA	FLA	Wire Gauge	Maximum Distance In Feet
55	2.3	20	45
		18	60
		16	100
		14	160
		12	250

## TRANSFORMER TAPS

230/208V, 1 phase and 3 phase equipment employ dual primary voltage transformers. All equipment leaves the factory wired on 240V tap. For 208V operation, reconnect from 240V to 208V tap. The acceptable operating voltage range for the 240 and 208V taps are:

TAP	RANGE
240	253 – 216
208	220 – 187

**NOTE:** The voltage should be measured at the field power connection point in the unit and while the unit is operating at full load (maximum amperage operating condition).

# START UP AND OPERATION

---

## THREE PHASE SCROLL COMPRESSOR START UP INFORMATION

Scroll compressors, like several other types of compressors, will only compress in one rotational direction. Direction of rotation is not an issue with single phase compressors since they will always start and run in the proper direction.

However, three phase compressors will rotate in either direction depending upon phasing of the power. Since there is a 50-50 chance of connecting power in such a way as to cause rotation in the reverse direction, verification of proper rotation must be made. Verification of proper rotation direction is made by observing that suction pressure drops and discharge pressure rises when the compressor is energized. Reverse rotation also results in an elevated sound level over that with correct rotation, as well as, substantially reduced current draw compared to tabulated values.

***Verification of proper rotation must be made at the time the equipment is put into service.*** If improper rotation is corrected at this time there will be no negative impact on the durability of the compressor. However, reverse operation for over one hour may have a negative impact on the bearing due to oil pump out.

***NOTE: If compressor is allowed to run in reverse rotation for several minutes the compressor's internal protector will trip.***

All three phase ZR\*3 compressors are wired identically internally. As a result, once the correct phasing is determined for a specific system or installation, connecting properly phased power leads to the same Fusite terminals should maintain proper rotation direction.

***The direction of rotation of the motor may be changed by reversing any two line connections to the unit.***

## SEQUENCE OF OPERATION

**COOLING** – Circuit R-Y makes at thermostat pulling in compressor contactor starting the compressor and outdoor motor. The G (indoor motor) circuit is automatically completed on any call for cooling operation, or can be energized by manual fan switch on subbase for constant air circulation.

**HEATING** – A circuit R-W1 is completed on each heating cycle energizing electric heat if so equipped.

## START UP NOTES

For improved start up performance, wash the indoor coil with dishwasher detergent

## HIGH PRESSURE SWITCH AND LOCKOUT RELAY (All Models Except P1136A1-B and P1136A1-C)

The air conditioners are equipped with an auto reset high pressure switch and lockout relay. The lockout relay may be reset by turning the thermostat to off or satisfying the thermostat.

# SERVICE AND TROUBLESHOOTING

## SERVICE HINTS

1. Caution homeowner to maintain clean air filters at all times. Also, not to needlessly close off supply and return air registers. This reduces air flow through the system which shortens equipment service life as well as increasing operating costs.
2. Check all power fuses or circuit breakers to be sure that they are the correct rating.
3. Periodic cleaning of the outdoor coil to permit full and unrestricted airflow circulation is essential.

## PRESSURE SERVICE PORTS

High and low pressure service ports are installed on all units so that the system operating pressures can be observed. Pressure tables can be found in Table 9 in this manual covering all models on cooling cycle. It is imperative to match the correct pressure table to the unit by model number.

## REFRIGERANT CHARGE

The correct system R-22 charge is shown on the unit rating plate. Optimum unit performance will occur with a refrigerant charge resulting in a suction line temperature (6" from compressor) as shown in Table 8.

TABLE 8

Model	Rated Airflow	95 Degree F OD Temperature	82 Degree F OD Temperature
P1124A2	800	56 - 58	63 - 65
P1130A2	1150	56 - 58	63 - 65
P1136A2	1275	57 - 59	58 - 60

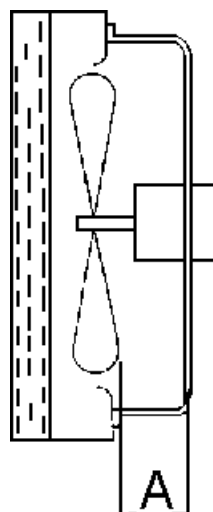
The above suction line temperatures are based upon 80°F dry bulb/67°F wet bulb (50% RH) temperature and rated airflow across the evaporator during cooling cycle.

## FAN BLADE SETTINGS

Shown in Figure 9 are the correct fan blade setting dimensions for proper air delivery across the outdoor coil.

Any service work requiring removal or adjustment in the fan and/or motor area will require that the dimensions below be checked and blade adjusted in or out on the motor shaft accordingly.

FIGURE 9  
FAN BLADE SETTING DIMENSIONS



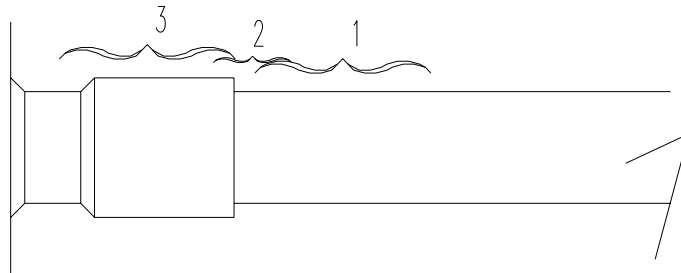
Model	Dimension A
P1124A2	1.00"
P1130A2	.75"
P1136A2	1.00"

## SUCTION AND DISCHARGE TUBE BRAZING

Compliant Scroll compressors have copper plated steel suction and discharge tubes. These tubes are far more rugged and less prone to leaks than copper tubes used on other compressors. Due to different thermal properties of steel and copper, brazing procedures may have to be changed from those commonly used.

- To disconnect: heat joint Areas 2 and 3 slowly and uniformly until braze material softens and the tube can be pulled out of suction fitting. (See Figure 10.)
- To connect:
  - Recommended brazing materials: silfos with minimum 5% silver or silver braze material with flux.
  - Reinsert tube into fitting.
  - Heat tube uniformly in Area 1 moving slowly to Area 2. When joint reaches brazing temperature, apply brazing material. (See Figure 10.)
  - Heat joint uniformly around the circumference to flow braze material completely around the joint.
  - Slowly move torch into Area 3 to draw braze material into joint. (See Figure 10.)
  - **Do not** overheat joint.

**FIGURE 10  
BRAZING DIAGRAM**



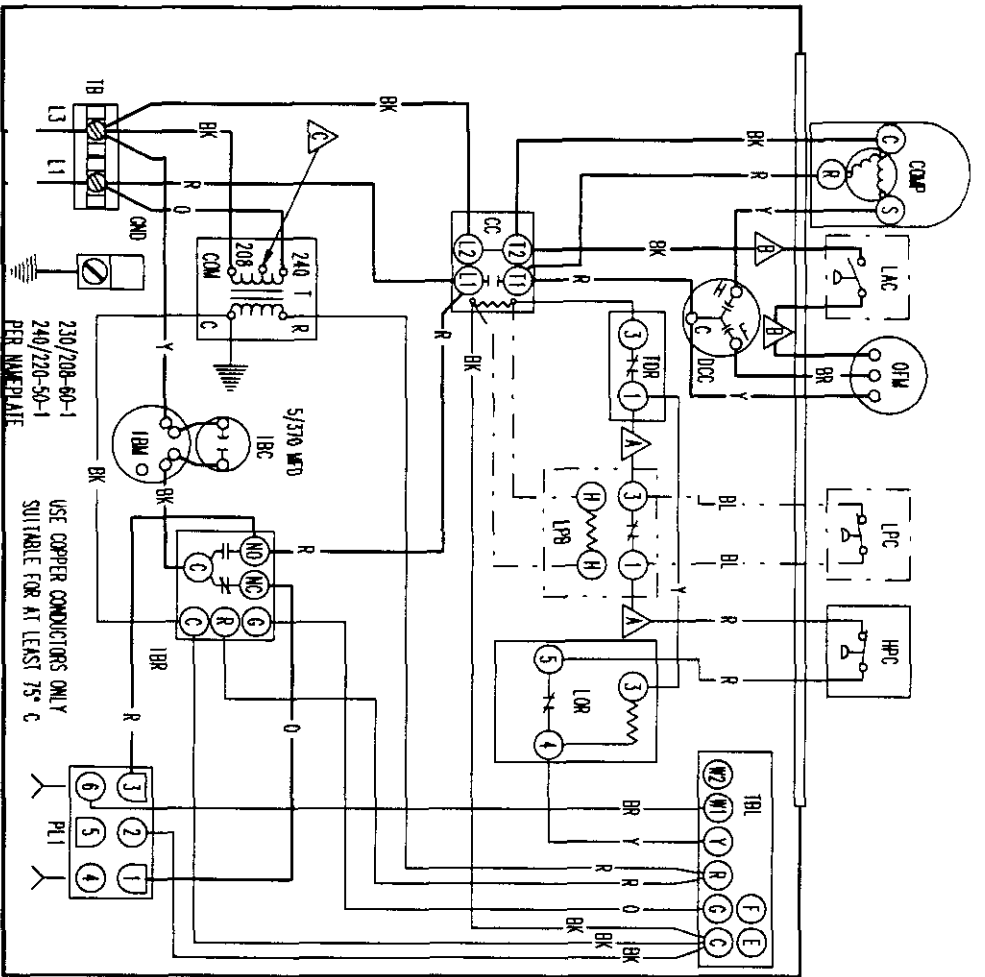
MIS-1179

**TABLE 9  
PRESSURE TABLE**

**COOLING**

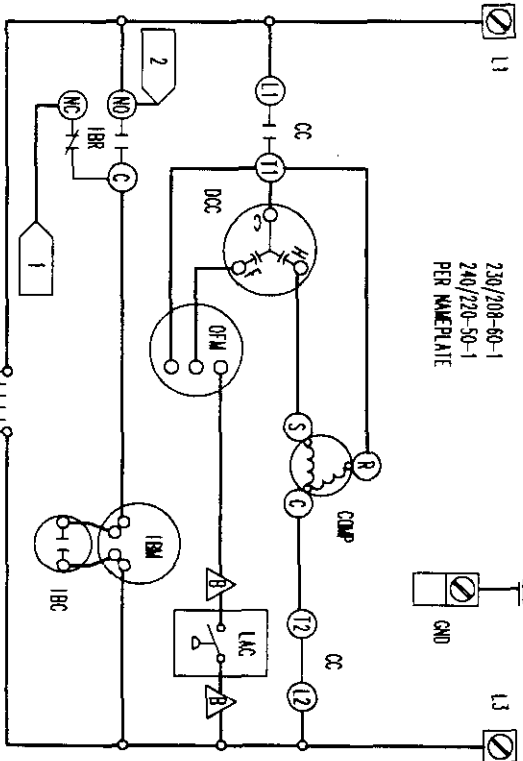
Air Temperature Entering Outdoor Coil Degrees F

Model	Return Air Temperature	Pressure	75	80	85	90	95	100	105	110	115
P1124A2	75 deg. DB 62 deg. WB	Low Side High Side	70 219	74 220	77 224	79 234	80 248	82 258	83 276	84 293	85 316
	80 deg. DB 67 deg. WB	Low Side High Side	75 224	79 225	82 230	84 240	86 254	88 265	89 283	90 300	91 324
	85 deg. DB 72 deg. WB	Low Side High Side	81 232	85 233	88 238	90 248	92 263	95 274	96 293	97 311	98 335
P1130A2	75 deg. DB 62 deg. WB	Low Side High Side	73 200	75 219	76 234	77 254	79 271	80 288	81 307	82 327	83 342
	80 deg. DB 67 deg. WB	Low Side High Side	75 205	80 225	81 240	82 260	84 278	85 295	86 315	87 335	88 351
	85 deg. DB 72 deg. WB	Low Side High Side	84 212	86 233	87 248	88 269	90 287	91 305	92 326	94 347	95 363
P1136A2	75 deg. DB 62 deg. WB	Low Side High Side	67 195	71 215	73 229	75 249	77 263	78 282	79 302	80 317	81 336
	80 deg. DB 67 deg. WB	Low Side High Side	72 200	76 220	78 235	80 255	82 270	84 290	85 310	86 325	87 345
	85 deg. DB 72 deg. WB	Low Side High Side	77 207	82 228	84 243	86 264	88 279	90 300	91 321	92 336	94 357

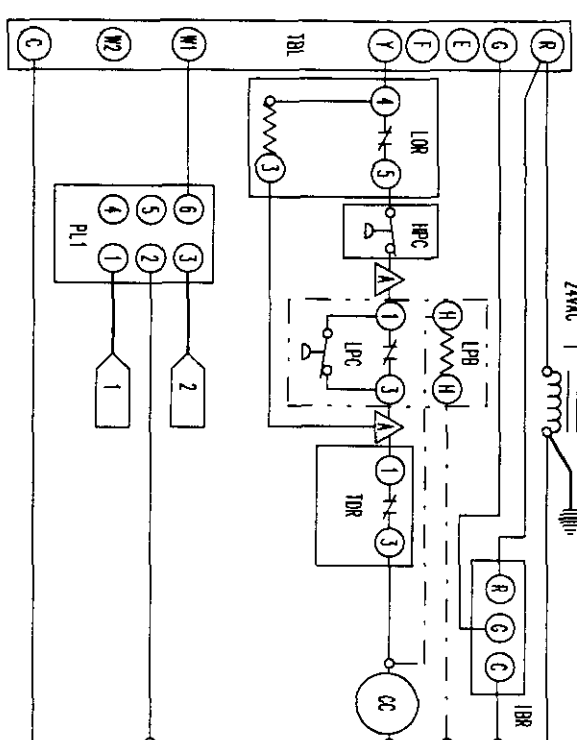


230/208-60-1  
240/220-50-1  
PER NAMEPLATE

USE COPPER CONDUCTORS ONLY  
SUITABLE FOR AT LEAST 75° C



230/208-60-1  
240/220-50-1  
PER NAMEPLATE



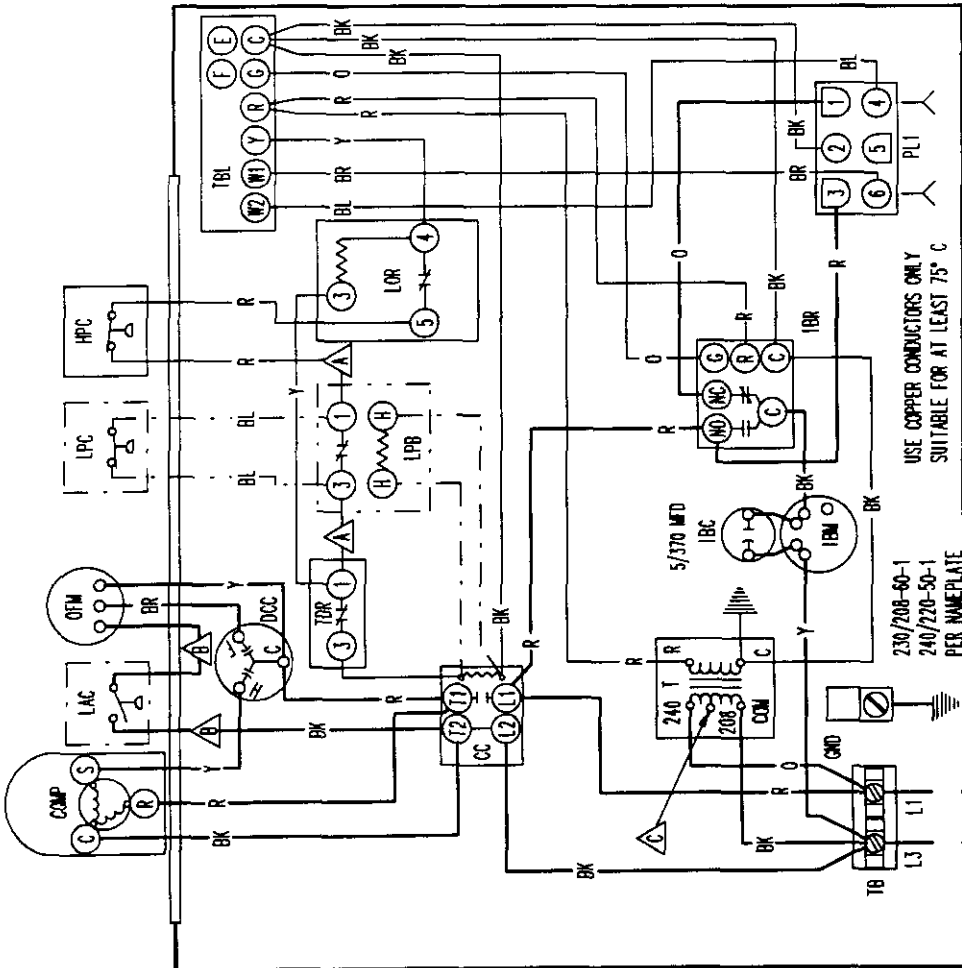
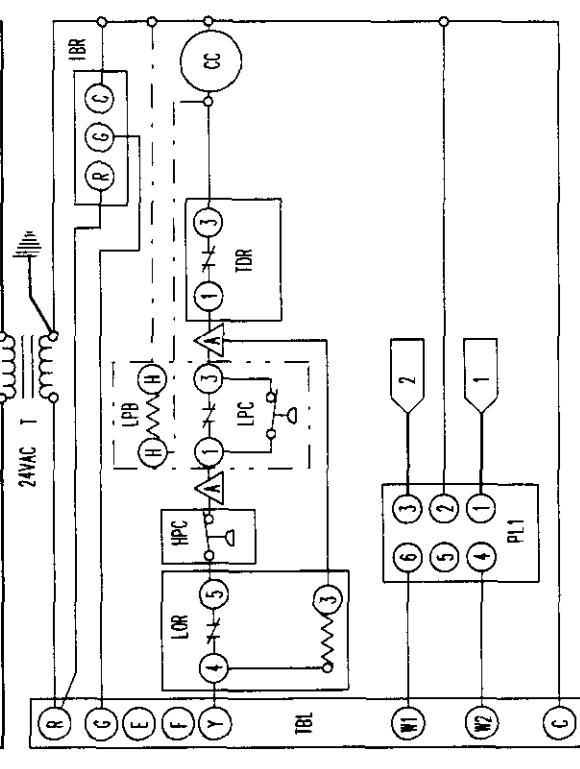
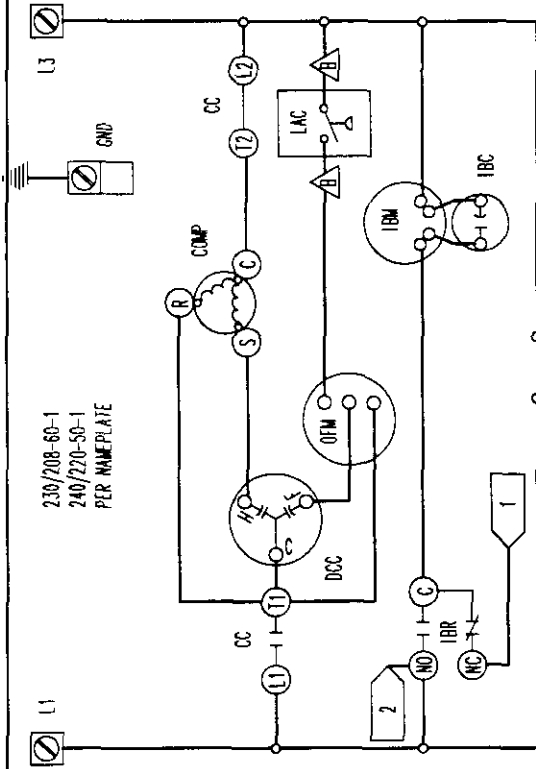
COMPONENT CODE	COMPONENT	LOW PRESSURE CONTROL
CC	COMPRESSOR	OUTDOOR FAN MOTOR
DC	DUAL CAPACITOR	PLUG #1
HC	EQUIPMENT GROUND	TRANSFORMER
IB	HIGH PRESSURE CONTROL	TERMINAL BLOCK
IC	INDOOR BLOWER CAPACITOR	LOW VOLTAGE TERMINAL BLOCK
IM	INDOOR BLOWER MOTOR	TIME DELAY RELAY
IP	INDOOR BLOWER RELAY	
LP	LOW AMBIENT CONTROL	
LR	LOOK OUT RELAY	
LB	LOW PRESSURE BYPASS	

CAPACITOR	PART NO.	MODEL
40/5-370	8552-050	P1124A2

FACTORY STD.	FIELD	OPTIONAL
BR	BLACK	Y
BR	BROWN	G
R	RED	BL
0	ORANGE	W
		Y
		GREEN
		BL
		BLUE
		W
		WHITE
		(PK)
		CV
		(S)
		VIOLET
		PURPLE
		GRAY
		SLATE
		TV
		L
		TAN
		PINK
		LAVENDER

BARCO MFG. CO.  
4063-129





CAPACITOR	PART NO.	MODEL
45/5 370	8552-052	P1130A2
50/5 370	8552-063	P1136A2

COMPONENT CODE	LOW PRESSURE CONTROL
CC	COMPRESSOR CONTACTOR
COMP	COMPRESSOR
DCC	DUAL CAP CAPACITOR
GND	EQUIPMENT GROUND
HPC	HIGH PRESSURE CONTROL
IBR	INDOOR BLOWER RELAY
IBM	INDOOR BLOWER MOTOR
LAC	INDOOR AMBIENT CONTROL
LOR	LOCK OUT RELAY
LPB	LOW PRESSURE BYPASS
LPC	LOW PRESSURE CONTROL
OFM	OUTDOOR FAN MOTOR
PL1	PLUG #1
T	TRANSFORMER
TBL	TERMINAL BLOCK
TDR	LOW VOLTAGE TERMINAL BLOCK
TCT	TIME DELAY RELAY
	TOP CAP THERMOSTAT

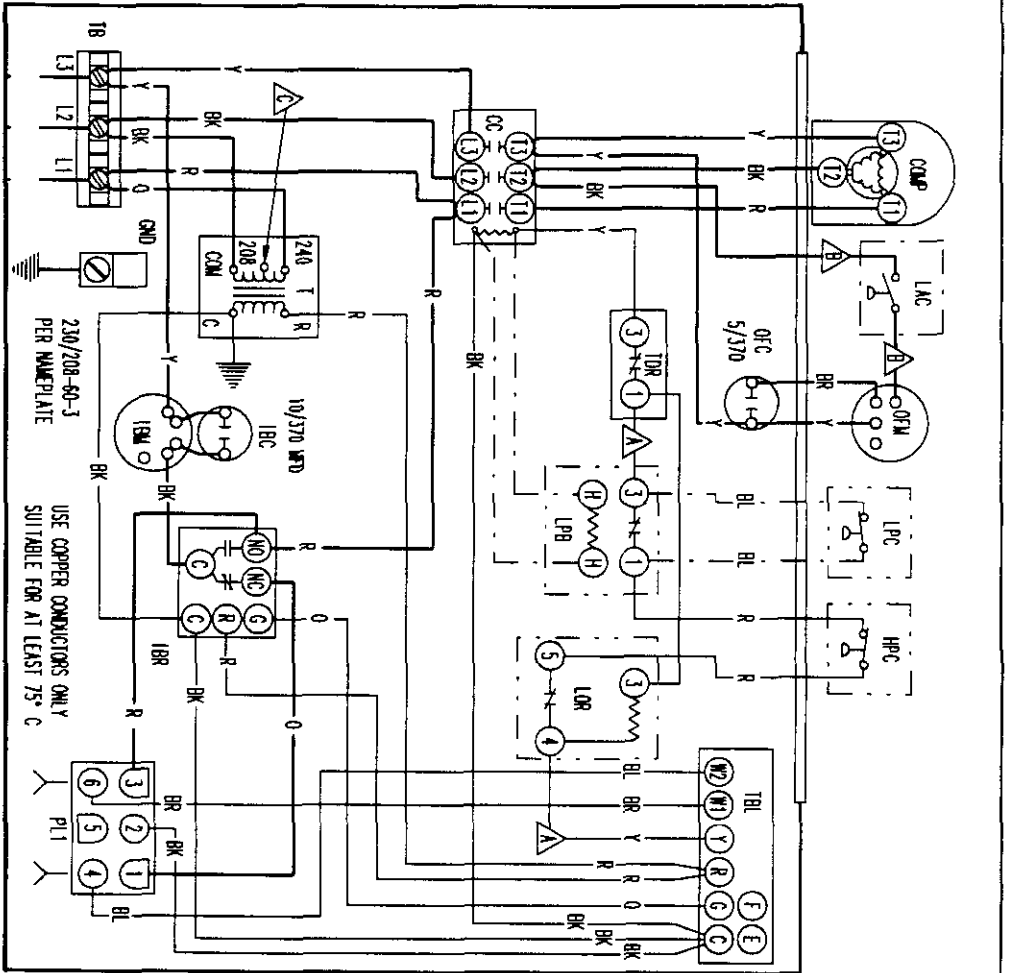
△ LABELLED WIRES CONNECT IF NO OPTIONS USED.

△ WIRE RED WIRE TO 20RY TAP FOR 20RY OPERATION

FACTORY STD.	FIELD	OPTIONAL
HIGH VOLTAGE	---	---
LOW VOLTAGE	---	---
ACCESSORY	---	---

COLOR CODE	
BK	BLACK
BR	BROWN
R	RED
O	ORANGE
Y	YELLOW
G	GREEN
BL	BLUE
W	WHITE
V	VIOLET
(PR)	PURPLE
GY	GRAY
(S)	SLATE
T	TAN
PK	PINK
L	LAVENDER

BARD MFG. CO.  
4063-130



**COMPONENT CODE**

CC	COMPRESSOR CONTACTOR	LPC	LOW PRESSURE CONTROL
DCP	COMPRESSOR	OFM	OUTDOOR FAN MOTOR
DOC	DUAL OIL CAPACITOR	OFM	OUTDOOR FAN MOTOR
CND	EQUIPMENT GROUND	PL1	PLUG #1
HPC	HIGH PRESSURE CONTROL	T	TRANSFORMER
IFM	INDOOR BLOWER CAPACITOR	TBL	LOW VOLTAGE TERMINAL BLOCK
IBC	INDOOR BLOWER MOTOR	TBL	TIME DELAY RELAY
LAC	INDOOR BLOWER RELAY	TDR	TIME DELAY RELAY
LOR	LOCK OUT RELAY		
LPB	LOW PRESSURE BRASS		

**WIRE COLOR CODE**

BR	BLACK	Y	YELLOW	V	VIOLET	T	TAN
BR	BROWN	G	GREEN	(PR)	PURPLE	PK	PINK
R	RED	BL	BLUE	CV	GRAY	L	LAVENDER
0	ORANGE	W	WHITE	(S)	SLATE		

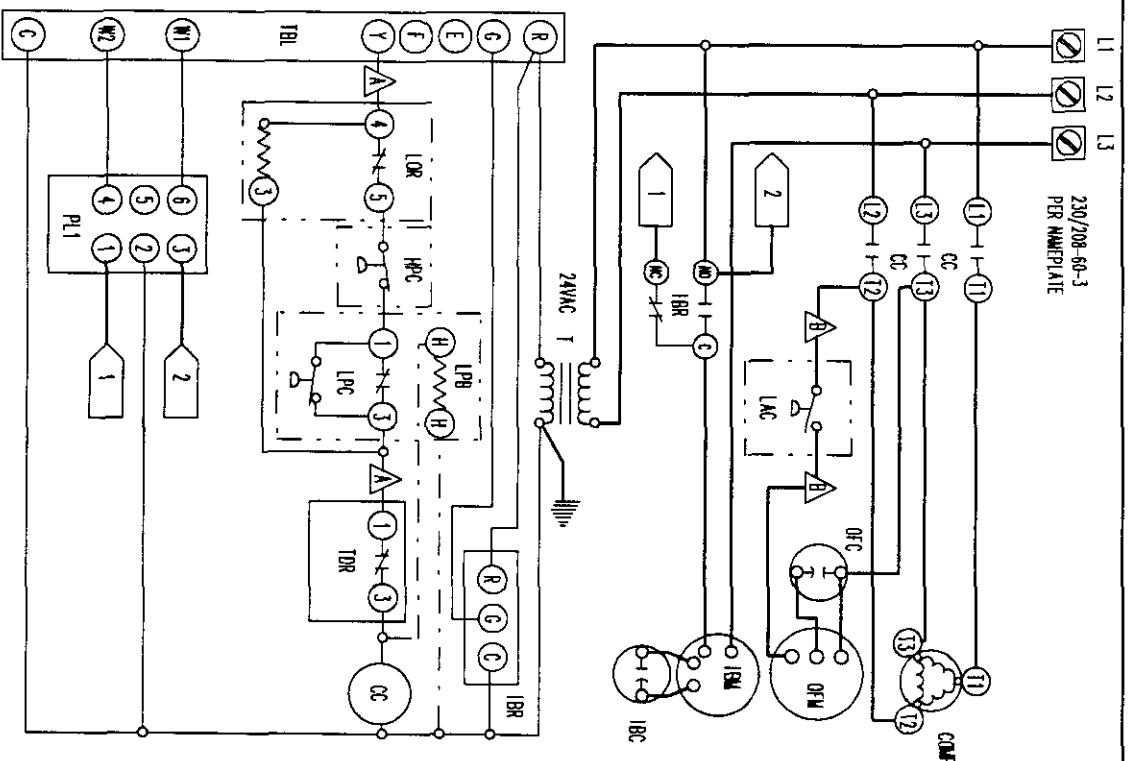
**FACTORY STD. FIELD**

**OPTIONAL**

**LOW VOLTAGE ACCESSORY**

**BARB MFG. CO.**

**4063-213 A**



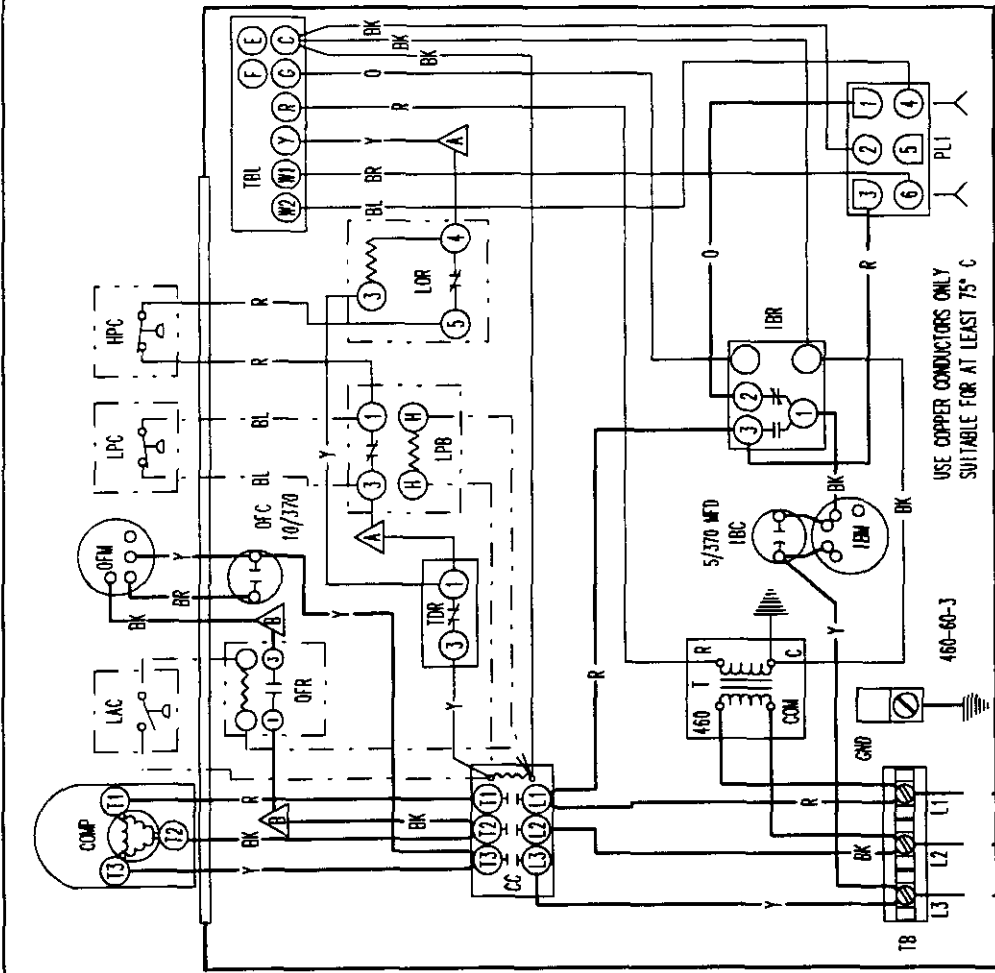
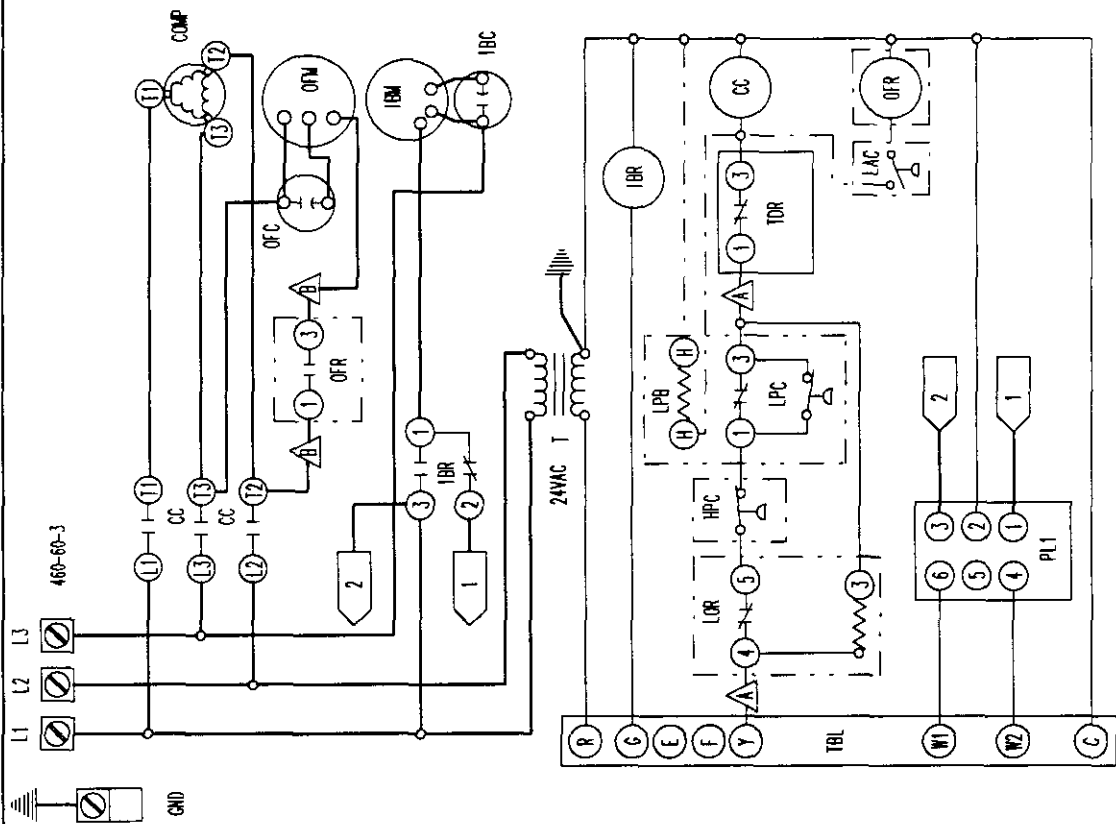
USE COPPER CONDUCTORS ONLY SUITABLE FOR AT LEAST 75° C

240V T 208V C

230/208-50-3 PER MANIPULATE

240V T 208V C

230/208-50-3 PER MANIPULATE



COMPONENT CODE	LOW PRESSURE CONTROL	LOW PRESSURE CONTROL	
CC	COMPRESSOR CONTACTOR	LPC	LOW PRESSURE CONTROL
COMP	COMPRESSOR	OFC	OUTDOOR FAN CAPACITOR
DCC	DUAL CAN CAPACITOR	OFM	OUTDOOR FAN MOTOR
GND	EQUIPMENT GROUND	OFR	OUTDOOR FAN RELAY
HPC	HIGH PRESSURE CONTROL	PL1	PLUG #1
IBC	INDOOR BLOWER CAPACITOR	T	TRANSFORMER
IBM	INDOOR BLOWER MOTOR	TB	TERMINAL BLOCK
IBR	INDOOR BLOWER RELAY	TBL	LOW VOLTAGE TERMINAL BLOCK
LAC	LOW AMBIENT CONTROL	TDR	TIME DELAY RELAY
LOR	LOCK OUT RELAY		
LPB	LOW PRESSURE BYPASS		

▲ B LABELLED WIRES CONNECT IF NO OPTIONS USED.

FACTORY STD.	FIELD	OPTIONAL
HIGH VOLTAGE	_____	_____
LOW VOLTAGE	_____	_____
ACCESSORY	_____	_____

BK	BLACK	Y	YELLOW	V	VIOLET	T	TAN
BR	BROWN <td>G</td> <td>GREEN <td>(PR)</td> <td>PURPLE <td>PK</td> <td>PINK</td> </td></td>	G	GREEN <td>(PR)</td> <td>PURPLE <td>PK</td> <td>PINK</td> </td>	(PR)	PURPLE <td>PK</td> <td>PINK</td>	PK	PINK
R	RED <td>BL</td> <td>BLUE <td>GY</td> <td>GRAY <td>L</td> <td>LAVENDER</td> </td></td>	BL	BLUE <td>GY</td> <td>GRAY <td>L</td> <td>LAVENDER</td> </td>	GY	GRAY <td>L</td> <td>LAVENDER</td>	L	LAVENDER
O	ORANGE <td>W</td> <td>WHITE <td>(S)</td> <td>SLATE</td> <td></td> <td></td> </td>	W	WHITE <td>(S)</td> <td>SLATE</td> <td></td> <td></td>	(S)	SLATE		

BARD MFG. CO.  
4063-311 B