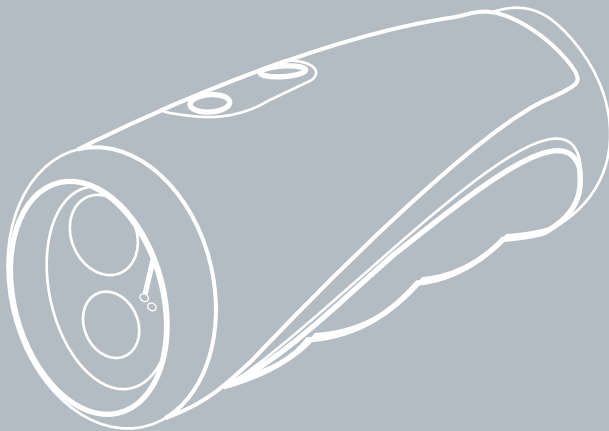


FlashDVR User's Manual

Waterproof Digital Video Recorder with LED Flashlight



Copyright Notice

This manual is furnished under license and may be used or copied only in accordance with the terms of such license. Except as permitted by such license, no part of this publication may be reproduces, stored in a retrieval system, or transmitted, in any means, electronic, mechanical, recording, or otherwise, including translation to another language or format, without the prior written permission of SecurityMan.

The content of this manual is furnished for informational use only, is subject to change without responsibility or liability for any errors or inaccuracies that may appear in this book.

All other product names, trademarks and registered trademarks in this document are the properties of their respective holders.

FCC Information

Note on FCC's "Consistent Statement of Information" this product meet the requirements specified in Part 15 of FCC Regulation. Operation rests with the following two conditions:

- (1) The equipment should not cause any harmful interference.
- (2) The equipment must accept any interference received, including interference that may us by undesired operation.

After testing the product, we confirm that camera complies with the provision for class C digital equipment in the 15th part in FCC regulation; and complies with the limitations for class B digital equipment in Part 15 of FCC regulation.

Warranty

SecurityMan warrants that this product will be free from defects in materials and workmanship for period of time specified on the product packaging. This limited warranty shall commence from the date of purchase (**normally 1 year**). SecurityMan Products warranty is not transferable and is limited to the original purchaser. If the product is found to be defective then, as your sole remedy and as the manufacturer's only obligation, SecurityMan will repair or replace the product. This warranty shall not apply to products that have been subjected to abuse, misuse, abnormal electrical or environmental conditions, normal wear and tear or any condition other than what can be considered normal use.

Limitation of Liability

The liability of SecurityMan arising from this warranty and sale shall be limited to a refund of the purchase price. In no event shall SecurityMan be liable for costs of procurement of substitute products or services, or for any lost profits, or for any consequential, incidental, direct or indirect damages, however caused and on any theory of liability, arising from this warranty and sale. These limitations shall apply not with standing any failure of essential purpose of any limited remedy.

For Customer Service: 888-977-3777

SecurityMan

4601 E. Airport Drive, Ontario, CA 91761, USA

Tel: 888-977-3777 or 909-230-6668

Fax: 909-230-6889

Email: info@securitymaninc.com

Website: <http://www.securitymaninc.com>

Copyright 2010 by SecurityMan v2.0

Operating Restrictions

DO NOT use this product to violate one's privacy. Monitoring one's private activities or private conversation without consent is illegal and this product is not designed and manufactured for these purposes.

DO NOT use this product for any illegal activities. SecurityMan® shall not be responsible for any consequences of illegal conducts made by users.

Conditions

Please read the following messages to make sure whether your working environment is suitable.

- Ensure there is enough recording space in built-in memory card
- Make sure the rechargeable battery is fully charged
- The temperature should be kept between 0°C to 50°C (32°F to 122°F). The relative humidity should remain from 15% to 85%.
- Avoid putting the product in places where occur might change rapidly in temperature or humidity
- Keep it dry, dustless and avoid exposure in it directly in sunlight
- Keep product away from heat sources such as electric heater
- Do not use this product near aggressive chemicals
- Do not point the camera toward sunshine directly

Warning

- Turn off the camera when it is not in use.
- Do not shake or stricken the product.
- Do not put in fire or heating place.
- Do not use metal objects to connect the polarities of the battery.
- Do not disassemble the product, otherwise the internal precision parts may get damaged, or personal injury caused.
- Do not attempt to service the product yourself as opening or removing covers may expose you to dangerous voltage or other hazards. Refer all servicing to qualified service personnel.

EU Environmental Protection

Waste electrical products should not be disposed of with household waste. Please recycle where facilities exist. Check with your local authority or retailer for recycling advice.



Table of Contents

Introduction	6
Features	6
Package Contents	7
Product Basic	8
Charging	9
Time/Date Setup	10
Installation	11
Operation	13
Power on DVR & Flashlight Use	13
Recording Video	14
Day Time Recording	14
Night Time Recording	14
Underwater Recording	15
FlashDVR Characteristics	16
USB Connection & PC Playback	17
MPC Installation Guide	18
Product Specifications	25

Introduction

Thank you for purchasing the FlashDVR. SecurityMan FlashDVR is a smart flashlight with built-in color camera for video recording and 4GB memory of storage. It is a portable flashlight DVR recorder ideal for daytime recording, night time recording, and under water recording (submersible up to 33ft). Easy access to recorded video files with USB interface to any personal computer to view, edit, and playback footages. It is a great companion for drivers, bikers, campers, hunters, scuba divers, cavers, hikers, and security guards.

Note: Please read the entire user's manual before operation.

Features

- Sporty flashlight design with color camera built-in
- Crystal clear VGA quality with date and time stamp
- Strong lighting LED matrix for illumination in dark areas
- Submersible up to 10m (33ft) underwater
- Underwater “Lock” switch to prevent controls from the impact of water pressure
- Rechargeable Li-battery battery for 4/8 hours usage (record with flashlight on / flashlight on only)
- Built-in 4GB of memory up to 2hrs of record time, records in AVI file format
- Mini USB 2.0 interface, connect to a PC for playback and download
- Easy mounting brackets for hat and bike

Package Contents

- | | |
|--|----------------------------|
| 1 1 x Flashlight DVR (GETTIME. exe, User's Manual inside) | 5 1 x USB cable |
| 2 1 x Hat-bracket | 6 1 x Lanyard |
| 3 1 x Bike-bracket | 7 1 x User's Manual |
| 4 1 x Power adapter/charger | 8 1 x Plectrum |
| | 9 1 x Adhesive(3M) |



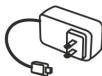
1



2



3



4



5



6



7

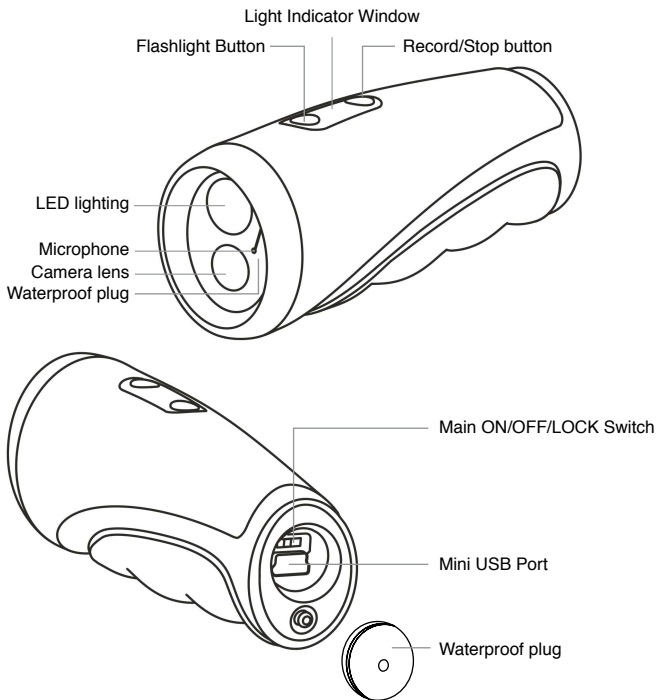


8



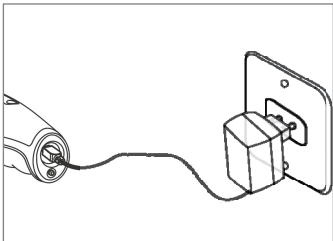
9

Product Basics

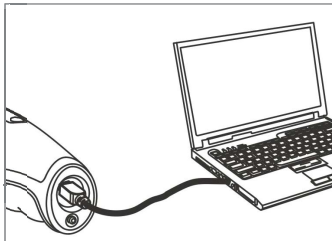


Charging

Charging is required before Flashlight DVR can be use. There are two ways to charge; the first way is to use the A/C adapter (5V 1.5A) and the second way is through a USB cable to plug into a computer to charge. To charge using the A/C adapter, plug the adapter end into an electrical outlet and then plug the mini USB to the back (remove Waterproof Plug) of FlashDVR and a solid red light will appear in the Indicator Light Window to indicate charging. To charge using a personal computer, plug the receptacle A of the USB cable into a PC and then plug the mini USB to the back (remove waterproof Plug) of the FlashDVR and a solid red light will appear in the Indicator Light Window to indicate charging, as shown below. The solid red light will turn off when internal rechargeable battery is fully charged. Charging the battery will take about 4 hours and a half.



Using A/C adapter

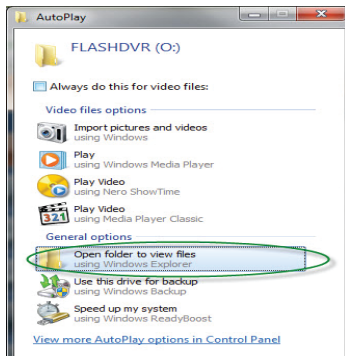
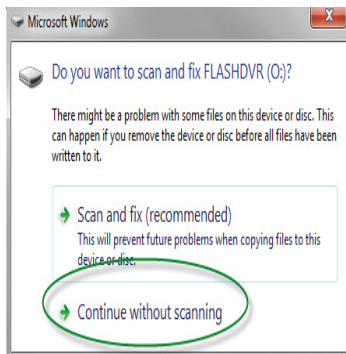


Using USB cable with computer

Time & Date Setup

Before using FlashDVR, test by recording a video file clip. Then plug the DVR into a personal computer to playback (see USB connection & PC Playback page 17). Check the Time/Date stamp of the recorded video file to be current up to date. If the Time/Date stamp is not up to date, follow the procedure below to reset the Time and Date:

1. Prepare a computer running windows 2000/ XP/ Vista/ 7 with current Time/Date.
2. Connect the Flashlight DVR to a computer using the USB cable and a window will appear as shown below. Select **“Continue without scanning”** to continue. And then select **“Open folder to view files”** to get to the root explorer of Flashlight DVR directory.



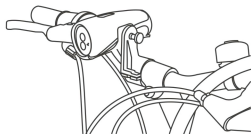
3. Double click on the **GETTIME.exe** file in the root directory of the FlashDVR to complete Time/Date setup.

Note. The system will automatically generate a temporary **GETTIME.txt** file in the Mobile Disk directory of Flashlight DVR. Please also be noted that a PDF copy of the FlashDVR user's manual is included in the root directory of Flash DVR for your reference.

4. Time/Date setup completed, disconnect USB cable.

Installation

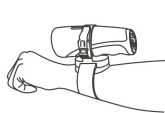
There are two types of brackets included with the Flashlight DVR. The adventure hat bracket and the bicycle handle bar bracket. The brackets can install in various position and angle, as illustrated in the diagram below.



Bicycle handlebar



Adventure hat



Wrist

To mount the adventure hat bracket to an object, helmet or wrist, place the Flashlight DVR into the smoked plastic ring coupler holder, adjust DVR to a desire position and then secure it down by fastening the latch. Next, loop and wrap the elastic rubber strap around an object, helmet or wrist, thread elastic rubber strap through the smoked plastic holder, and then secure by placing the plastic notch through the belt hole of the rubber strap and thread the rubber strap through the rubber holder. Lift up the rubber strap from the plastic notch to release the strap.

To mount the bicycle bracket to a handlebar or bar, place the Flashlight DVR in the plastic holder (plastic notch towards the front of the DVR) and turn the thumb screw clockwise to secure the DVR to the holder. Then mount the bracket to a handlebar/bar and secure the bracket to the handlebar/bar by turning the thumb screw clockwise. Turn the thumb screw counter clockwise to loosen the bracket.

Note: For handlebar/bar that is smaller than the bracket, use the adhesive 3M sticker on the inside of the bracket before securing. Measure the amount of adhesive needed, cut adhesive according to measurement and then stick it on the inside of the bracket.

To connect the lanyard to FlashDVR, simply hook the lanyard to the Waterproof Plug of flashlight DVR and adjust the size by press+hold the leverage ball then pull on the lanyard to adjust to the desire size.

Operation

Power ON DVR & Flashlight Use

Remove the Waterproof Plug from the back of the FlashDVR to get to the Main LOCK/ON/OFF Switch. Slide the main switch to the ON position (default OFF, Fig-1 below) to turn on the FlashDVR. Press the Flashlight button once to turn ON the LED flashlight (Fig-2 below). Press the Flashlight button again to turn OFF the LED flashlight. The LED flashlight can be use as a practical flashlight or it can be use to aid the DVR for night time recording. On a fully charged battery, the flashlight run time can last up to 6 hours of continuous lighting without the use of the DVR. When the battery is drained in flashlight mode, the LED flashlight will flash once to indicate battery is drained and then turns off.

Main ON/OFF/LOCK Switch

In the left: lock

In the middle: on

in the right: turn OFF the power

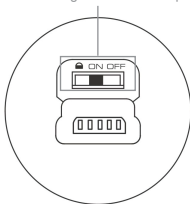


Fig-1

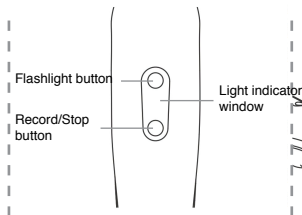


Fig-2

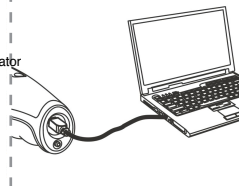


Fig-3

Recording Video:

Remove the Waterproof Plug and switch the Main LOCK/ON/OFF Switch to the ON position. Place the microphone rubber plug (front of FlashDVR) away from the microphone port for audio recording or vice versa to disable audio recording. The microphone port is indicated with the microphone symbol. Press the Record /Stop Button (Fig-2 above) to start video recording. Microphone port must be plugged in with the waterproof microphone plug for underwater recording, see Underwater Recording page 15 for detail.

Note: For smooth, stable playback footage; it is best to ensure the FlashDVR is stable during recording as non-sturdy recording will result in un-stable playback the footages.

A solid blue light will appear for 7 seconds and then flashes blue in the Light Indicator Window to indicate the DVR is in record mode. Press the Record/Stop Button again to stop recording at any time. During the initial 7 seconds of solid blue light recording, the audio will NOT record until the start of the blinking blue light shown in the Indicator Window. FlashDVR comes with a 4GB built-in memory. The built-in memory can record up to 2 hours of continuous video footage in AVI format. Files will be automatically segmented into ~1GB per file, on an average of 4~5 files for continuous recording until the memory is full.

Day time recording

A fully charged battery last up to 8.5 hours during day time recording without the use of the LED flashlight. To record in the day, determine the use of the audio (cover the mic port with the rubber plug to mute or vice versa), set the recording angle and then press the Record/Stop button once to start recording. Press the Record/Stop button again to stop the recording.

Night time recording

Night time recording requires the LED flashlight to be turned on for a shorter time

comparison to the day time use. The internal rechargeable battery of the FlashDVR in night time recording can last up to 4.5 hours (DVR on, Flashlight on). To record at night time determine the use of audio (cover the mic port with the rubber plug to mute or vice versa), position the camera at a desire angle, press the Flashlight button to turn on the flashlight and then press the Record/Stop button once to start recording. Night time recording visibility is limited to about 16~20 feet, environment may vary. Press the Record/Stop button again to stop recording.

Underwater recording

There are several preparation steps to prepare before submerging FlashDVR underwater for recording. To record underwater, please follow these steps:

1. Remove the waterproof plug from the back of FlashDVR by turning it counter clockwise.
2. Switch the Main LOCK/ON/OFF Switch to the ON position. Turn ON the flashlight if it is dark or leave the flashlight turn OFF if there is enough lighting in the environment.
3. Press the Record/Stop button to start recording.
4. In order to avoid the impact of pressure on the buttons, the DVR has to be in LOCK mode. Switch the Main Switch to the LOCK mode; this can be accomplished by sliding the Main LOCK/ON/OFF Switch to the LOCK position. Screw on the waterproof plug securely will prevent water from getting inside to the Main Switch. In LOCK mode, everything is locked, including all the buttons control.
5. Finally, to avoid the flow of water from damaging the microphone, please make sure the microphone port is sealed with the waterproof rubber plug located near the LED light.
6. FlashDVR is now safe to submerge underwater for recording and exploring.

WARNING 1: Before submerging FlashDVR: Microphone port must be plugged in with the mic waterproof plug. The rear Waterproof Plug must be secure and tight.

WARNING 2: After underwater recording; switching from LOCK mode back to ON mode must be precise; and cannot be over switch to OFF mode as recorded data will be lost. Take your time and extra precaution when switching from LOCK to ON.

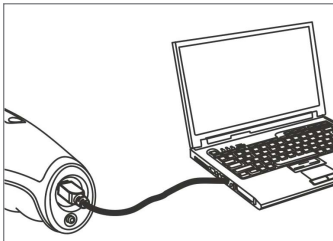
Flashlight DVR Characteristics

- Continuous recorded video file will automatically be saved as an incremental file of ~1GB in size which is roughly 25~30 minutes of playback time per file.
- When the memory is full or the battery is drained, the Light Indicator Window flashes red and the LED flashlight will flash once and then turns off. The built-in memory of 4GB capacity can record 2 hours of continuous video footage. Once full, it is necessary to connect the Flashlight DVR to a PC to download and delete to empty and restore the memory capacity for more recording.
- Avoid sliding the Main LOCK/ON/OFF Switch to the OFF position during record mode as the recorded video data will NOT be saved.
- During charging or connection to a PC, Flashlight DVR cannot be use; cannot record, cannot turn on flashlight.
- If the battery is drained, the Light Indicator Window will turn red, and the video file will automatically be saved before shut down.
- In the recording, if the indicator light turns solid blue it means that the built-in memory is full.
- If the computer cannot play the video file, please install the video player software from <http://mpc-hc.sourceforge.net/> Media Player Classic (MPC) or latest update Window Media Player available.

USB connection & PC Playback

When the internal memory is full or rechargeable battery is weak, open the waterproof plug and plug FlashDVR to a computer via USB cable. Leave the FlashDVR connected to the computer to recharge the battery. To empty the internal memory for more recording, go to the root of the Removable Disk of the FlashDVR to DCIM folder and into the 100DSCIM folder. Playback or copy and paste the AVI video from the Removable Disk Flashlight DVR. Copy and paste the file(s) into a local or back up hard disk to free up space from the Flashlight DVR. Alternatively, the recorded files can be playback on personal computer using Windows Media Player or Media Player Classic (MPC) which is a freeware and it can be downloaded from <http://mpc-hc.sourceforge.net/> .

NOTE: Please use Media Player Classic (MPC) player or Windows Media Player to playback recorded video footage. MPC is a freeware, not included, but downloadable from <http://mpc-hc.sourceforge.net/> . Windows Media Player comes standard in most PC. Please reference MPC and Windows Media Player help menu for software use and playback. When emptying the memory, avoid deleting GETTIME.exe and FlashDVR User's Manual.



MPC Installation Guide

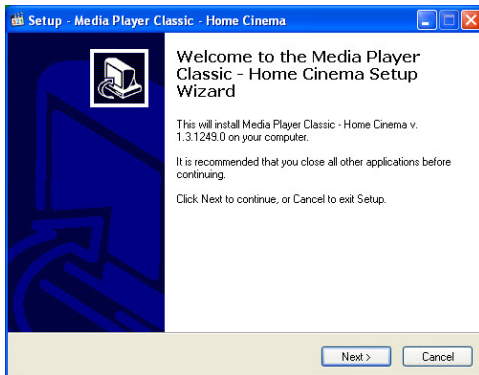
To install the Media Player Classic, visit <http://mpc-hc.sourceforge.net/> to download the latest freeware MPC available and then double click on “MPC-HomeCinema.1.3.1249.0(xxx).exe” to start the installation process as shown below.



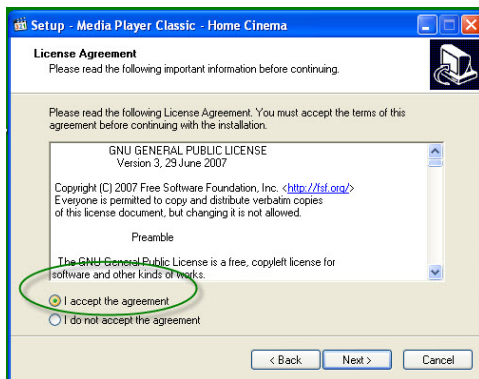
Click “**Ok**” at the Setup window as shown below.



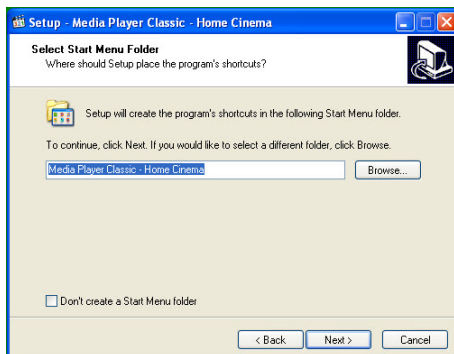
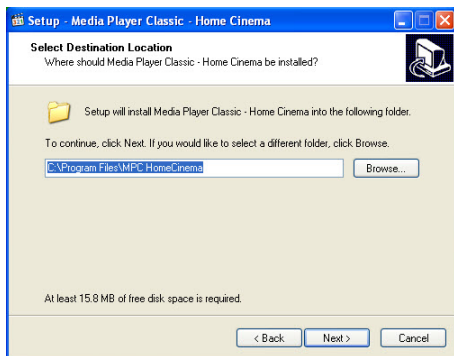
At the Welcome window, click on **Next** to proceed.



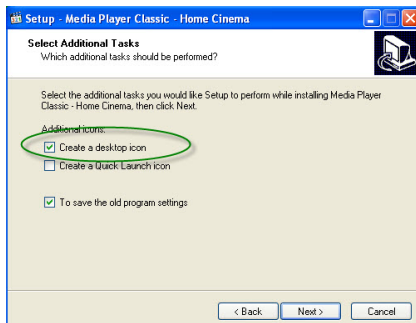
Select **"I accept the agreement"** and then click on Next to proceed with installation.



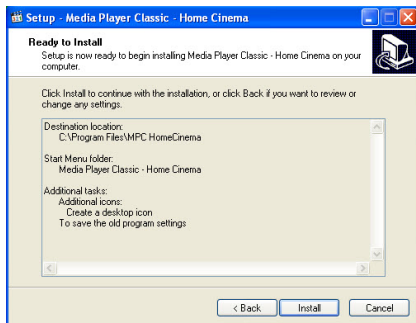
Click **Next** for the next 3 winows as shown below.

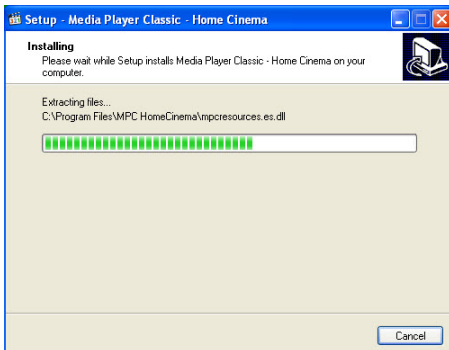


Be sure to check the **“Create a desktop icon”** as shown in the second window below.

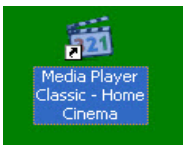


Then click on **“Install”** and then click on **“Finish”** to complete the installation process as show below.

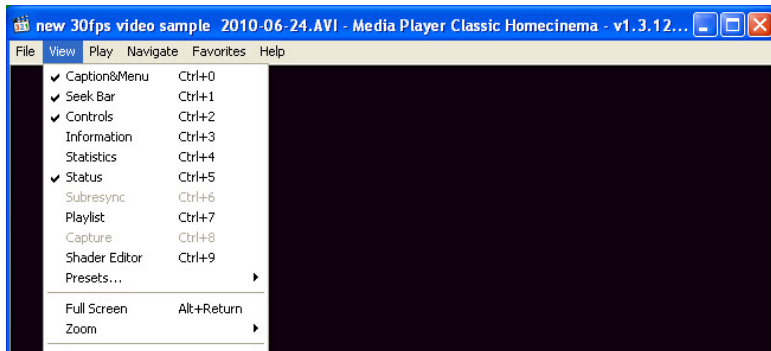


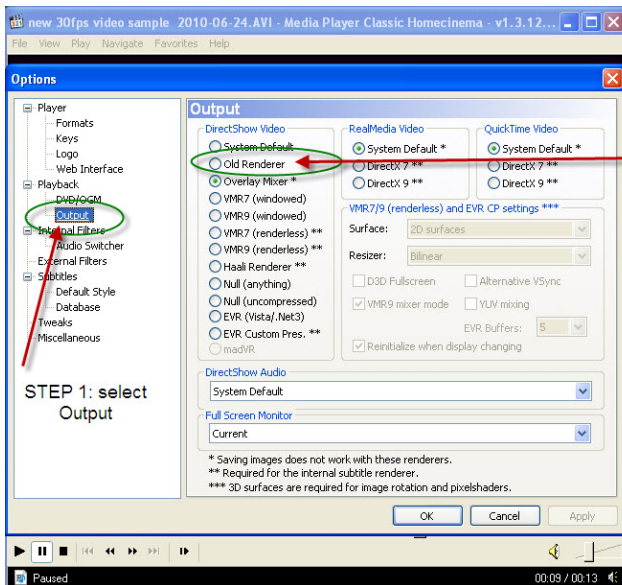


To open MPC player for playback, click on the “**Media Player Classic - Home Cinema**” shortcut on the desktop as shown below. Please reference MPC player help menu for tutorial.



In case “**Save Image**” and “**Save Thumbnails**” does not allow image to be save, click on View > Options > Output > Old Renderer (select Old Renderer) as shown below, for MPC only. Then click on Apply and Ok to accept setting.





STEP 2: select
"Old Renderer"

STEP 1: select
Output

Product Specifications

Image Sensor	1/5" Color CMOS
Video Resolution	640x480 (VGA)
Audio	Microphone built-in
Storage Medium	4GB Built-in Memory
Waterproof	IP68 (10m max underwater)
Power Supply	5V 1.5A, positive inside
Power Consumption	440mA
Rechargeable Battery	3.7V / 1800mAh Li-Battery
LED Power	1W
Dimensions (WxDXH)	119x38x46mm
LED Light Color Temperature	5500~6000K
Weight (net)	133g
Viewing Angle	55°
Video File Format	AVI
Video File Size (Frame Size)	>30MB/min (21K/frame)
Recording Speed	30 fps (auto)
Data transmission	USB 2.0
Charge Time	4 hrs 30min
Battery Work Time	4-8 hrs
Charge Current	1A
Operating Temperature	(MAX) 0°C~+50°C (+32°F~+122°F)
Operating Humidity	15%~85%RH

www.securitymaninc.com