

# Dreambox DM 100

**DREAM**  
*multimedia*



## Bedienungsanleitung

Digitaler Satellitenempfänger zum Empfang von freien und verschlüsselten DVB-Programmen.

Kommunikations-Schnittstelle  
Smartcard Leser  
Real Time OS

## User Manual

Digital satellite receiver for free and encrypted Digital Video Broadcasting (DVB).

Communication-Port  
Smartcard Reader  
Real Time OS

**DVB**  
Digital Video  
Broadcasting

**Stab - USALS**  
UNIVERSAL SATELLITES  
AUTOMATIC LOCATION SYSTEM

**DD DOLBY**  
DIGITAL  
*Streaming*

## Table of contents

### 1. Before initial operation of the receiver

1.1	Safety instructions .....	4
1.2	Packaging contents .....	7
1.3	Views .....	8
1.3.1	Explanation front panel.....	9
1.3.2	Explanation rear panel.....	9
1.4	Remote control .....	11

### 2. Installation

2.1	Turning the device on .....	16
-----	-----------------------------	----

### 3. Start wizard

3.1	Language selection .....	17
-----	--------------------------	----

### 4. Basic operation

4.1	Turning your Dreambox on and off.....	18
4.2	Main OSD Menu .....	18
4.3	Teletext .....	18
4.4	Audio tracks.....	19
4.5	Favorite list .....	19
4.6	Zoom .....	19
4.7	Multi picture .....	20
4.8	Sattelite list .....	20
4.9	History list.....	21
4.10	Radio list .....	21
4.11	Infobar .....	22

5. Electronic Program Guide - EPG .....	23
---	----

<b>6. Edit the channellist</b>	
6.1 Channel list .....	24
6.2 Edit channels .....	25
6.3 Edit favorites .....	25
6.4 Parental control .....	26
<b>7. Setup</b>	
7.1 Language .....	27
7.2 Timezone .....	27
7.3 A/V Settings .....	27
7.4 OSD Settings.....	28
7.5 Factory reset .....	28
<b>8. Service searching</b>	
8.1 Select the satellite .....	29
8.2 Antenna setup .....	29
8.3 Transponder scan .....	29
8.3.1 Automatic transponder scan.....	30
8.3.2 Manual transponder scan.....	30
8.3.3 PID transponder scan.....	31
8.3.4 Blind transponder scan.....	31
8.4 Channel scan .....	32
8.5 Motor setup .....	32
8.5.1 DiSeqC 1.2 .....	32
8.5.2 USALS .....	33
8.6 Edit transponder .....	33
<b>9. Technical data</b> .....	34
<b>10. Contact &amp; support information</b> .....	36
<b>11. Copyright notes</b> .....	36
<b>12. Service slip</b> .....	37

## 1. Before initial operation of the receiver

### 1.1 Safety instructions

Please read the safety instructions completely and carefully, before using the Dreambox. The Manufacturer takes no responsibility for damages as a result of incorrect handling of the Dreambox.

- Allow enough space around the Dreambox for sufficient ventilation, minimum 10cm.
- Do not cover the top of the Dreambox and allow enough space to other devices. The louvers of the devices must be free at all times to allow sufficient heat transfer from inside the device.
- Never put vases or any other liquid filled containers on top of the device. Do not expose the device to dripping or splashing liquids.
- Do not place open flame sources, such as lit candles, on top of the device.
- The device may only be operated in moderate climate.
- Do not remove the cover. Risk of electric shock. If it is necessary to open the device please contact a trained professional.



- Do not put any metal things into the slots or ventilation openings.

#### **ATTENTION!**

**Modifications and changes to the Dreambox lead to loss of warranty if not performed and documented by skilled personal.**

#### **ATTENTION!**

**We recommend not to remove SIM card inside Dreambox, it will lead to loss of warranty.**

**Note:** The Dreambox DM 100 carries the CE-sign and fulfills all requirements from the EU. Subject to change without prior notification.

## Shut down

- In case your Dreambox is in use for a longer period of time disconnect the power plug from the power outlet.
- During thunder storm the unit should also be physically disconnected from the power outlet.

## Additional safety instructions

- (Dis-)Connecting to a LNB:  
Turn the Dreambox off before you connect or disconnect a cable coming from or going to a LNB.
- Connecting to a TV:  
Before connecting or disconnecting your Dreambox to/from a TV please turn it off.
- In case you notice any damage to the power cord or power plug immediately disconnect the device from the power outlet.
- In case the device was exposed to humidity immediately disconnect the device from the power outlet.
- In case you notice any serious damage to the outer shell of the device immediately disconnect the device from the power outlet.
- Do not expose the Dreambox to direct sunlight, lightning or rain.
- Grounding:  
The LNB cable must be grounded.  
The grounding system must meet SABS 061 requirements.
- Cleaning:  
Disconnect the mains power cord before cleaning the cover. Use a slightly damp cloth without cleaning agents.
- Connect the Dreambox only to suitable sockets. Do not allow overloads to occur.
- Plug of the power supply should be easy to reach for shutting down the main power in an emergency situation.

## Disposal instructions

The packaging of the Dreambox only consists of reusable materials. Please recycle if possible.

This symbol on the product or on its packaging indicates that this product must not be disposed of with your other household waste. Instead, it is your responsibility to dispose of your waste equipment by handing it over to a designated collection point for the recycling of waste electrical and electronic equipment. The separate collection and recycling of your waste equipment at the time of disposal will help to conserve natural resources and ensure that it is recycled in a manner that protects human health and the environment.



For more information about where you can drop off your waste equipment for recycling, please contact your local city office, your household waste disposal service or the shop where you purchased the product.

Please note that empty batteries and electric waste is not to be put into the regular garbage.

## 1.2 Packaging contents

Please check the completeness of the box's contents.  
Included in box:



Dreambox DM 100



Remote control



2 Batteries  
(1,5V Mignon / AA / LR6)



Power supply CWT 12V, 2A, 24W



1 Power cord



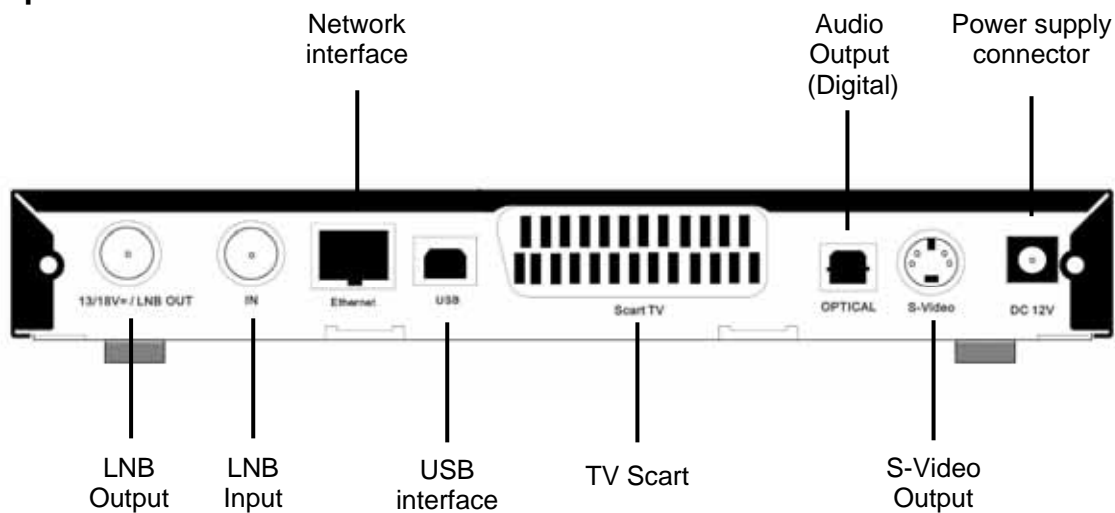
1 User manual (most recent version online:  
<http://www.dream-multimedia-tv.de> )

### 1.3 Views

#### Front panel



#### Rear panel





### 1.3.1 Explanation Front Panel

#### Smartcard Reader

Insert your Dreamcrypt Smartcard with the golden chip facing down and forward into the Smartcard reader. Dreamcrypt is a registered trademark of Dream-Multimedia.

#### Standby LED

The Standby LED lights up red if the Dreambox is in standby mode. It lights up green if the Dreambox is powered on.

#### Remote Control (RC) Led

The remote control LED lights up every time the Dreambox receives a signal from the remote control.

#### Standby on/off

The Standby on/off button toggles between standby mode and powered on mode.

### 1.3.2 Explanation rear panel

#### LNB input

Connect the coaxial cable from your LNB here.

#### LNB output

You can connect an analogue/digital receiver here. Remember to shutdown your Dreambox completely in order for the receiver to work.

#### S-Video output

Connect your S-Video cable to get better video quality.

#### TV Scart

Connect your TV or beamer to your Dreambox using a Scart cable.

#### Audio output - digital (Toslink)

You can connect your Dreambox with an optical (Toslink) cable to your HiFi-Amplifier or DSP. The AC3 signal is also available at this port in case the selected channel transmits Digital signals.

## **Power supply connector**

Plug the power cable of the power supply that came with your Dreambox into power outlet. Connect your power supply to your Dreambox. You must not connect the power plug of the power supply to anything other than a socket that supplies 230V/50Hz.

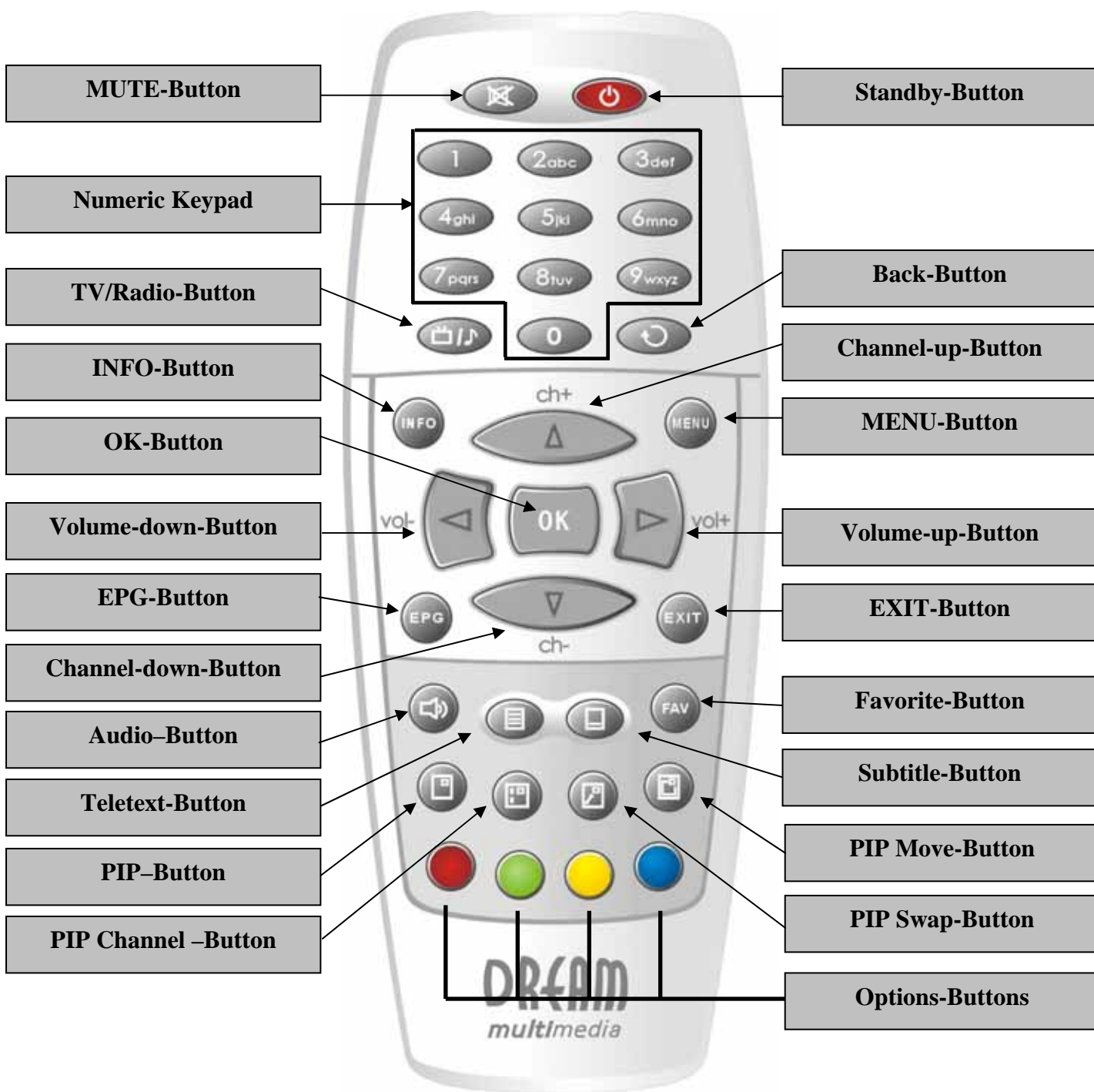
## **Network interface (Ethernet 10/100Mbit, RJ45)**

The Communication Port is an Ethernet port. It is used to communicate with your Dreambox via HTTP, FTP, NFS, Telnet and Samba. This port is also used to update the operating system of your Dreambox. Please use a regular patch cable to connect your Dreambox to your LAN.

## **USB interface**

This USB Port is to connect your Dreambox to PC to update the operation system of your Dreambox. It's only for update the operation system of Dreambox, any other USB equipment doesn't work with this USB Port.

### 1.4 Remote control



## Important notes about operation

All functions of the Dreambox can be controlled via OSD-Menu (On-Screen-Display). This makes the handling of the Dreambox very easy for you. All options are indicated by four colored dots or beams (**red, green, yellow, blue**) in the OSD-Menu and can be started with the Option-Buttons on the Remote Control.

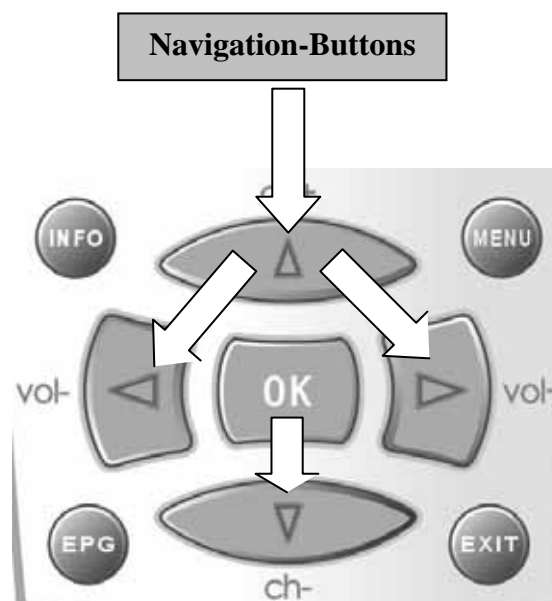
Depending on the chosen Menu, these options do vary.



All Menus and Service lists are closed with the **EXIT-Button**.

During Menu and Channellist navigation the following buttons are used to navigate:  
**Channel-up** = up  
**Channel-down** = down  
**Volume down** = left  
**Volume up** = right

If you want to enter a Menu press the **OK-Button**.



## Explanation remote control buttons

### MENU-Button

- INFORMATION
- INSTALLATION
- SYSTEM SETTINGS
- EDIT
- GAMES
- CARDS

You can switch to the needed option by pressing the **Navigation-Buttons** left or right. Also see: ***Important notes about operation.***

If you are in the service list, pressing the **MENU-Button** brings up the service menu. The shown options may vary depending on the service list you selected.

### Standby-Button

The **Standby-Button** switches your Dreambox on and off.  
Also see: ***Turning your Dreambox on / off.***

### Numeric Keypad

Enter a service number to directly access the option by using the **Numeric Keypad**. The service numbers are on the left side of the service list.

The **Numeric Keypad** can also be used to enter the page number in teletext mode, if you have pressed the **TEXT-Button** and activated the teletext decoder. The TV station has to submit teletext information; otherwise this feature cannot be used.

### MUTE-Button

Pressing the **MUTE-Button** mutes the Volume. A crossed speaker symbol will appear on the TV screen. Pressing it again or pressing one of the Volume-up or down-Buttons brings back the audio.

### Arrow-left-Button

### Arrow-right-Button

These Buttons enable to jump back or forwards through the Playlist. The Playlist contains the last chosen services, which have been selected.

Once having opened the service list, you are able to jump at the Beginning or the End of the Service list or to the next Marker.

**INFO-Button**

If no OSD menu is visible on the screen and you are in TV or RADIO-Mode, pressing the **INFO-Button** will reveal the Infobar. Pressing it again while the Infobar still is visible will bring up the EPG information of the chosen station as long as it available.

**OK-Button**

By pressing the **OK-Button** you confirm a selection in the menu or service list navigation.

If no OSD menu is present on your screen, the service list is shown once you press the **OK-Button**.

**Channel-up-Button**

Pressing the **Channel-up-Button** takes you to the next station in your selected service list. If the menu or service list is visible this button will move the cursor up.

**Channel-down-Button**

Pressing the **Channel-down-Button** takes you to the previous station in your selected service list. If the menu or service list is visible this button will move the cursor down.

**Volume-up-Button**

Pressing the **Volume-up-Button** will turn up the volume. If the menu or service list is visible this button will move the cursor to the right.

**Volume-down-Button**

Pressing the **Volume-down-Button** will lower the volume. If the menu or service list is visible this button will move the cursor to the left.

**AUDIO-Button**

By pressing the **AUDIO-Button** you can choose the different audio tracks offered by the station. Different audio tracks are indicated by the yellow dot in the Infobar.

**EXIT-Button**

You can leave all menus and service lists by pressing the **EXIT-Button**.

**TEXT-Button**

The **TEXT-Button** activates the Teletext (TuxTxt). If you are in the stations list, pressing this button will directly take you to the FILE-Mode.

**TV/RADIO-Button**

Pressing the **TV/RADIO-Button** activates the TV-Mode or RADIO Mode

**PIP-Button**

Pressing the **PIP-Button** activates Picture in Picture model. You can see main picture and small sub picture at the same time

**PIP Channel-Buttons**

Pressing the **PIP Channel-Button** you can select channel for small picture

**PIP Move-Button**

Pressing the **PIP Move-Button** will move the location of small screen where you want to place.

**PIP Swap-Button**

Pressing the **PIP-Swap-Button** you can swap main screen and small PIP screen each other.

**Options-Buttons**

All possible options are shown by the four colored dots/blocks (red, green, yellow, blue) and can be activated by the **Options-Buttons**.

Depending on the menu you currently are in the options will change and will be named differently.

## 2. Installation

### 2.1 Turning the device on

- Place the batteries inside the battery compartment of the remote control keeping in mind the right polarity.
- Before using the Dreambox, please read the safety instructions (See chapter **1.1 Safety instructions**)
- Connect the LNB or antenna with a coaxial cable to LNB in or Antenna in at your Dreambox.  
See chapter **1.3.2 Explanation rear panel**.
- Connect the Dreambox with a Scart cable to your television screen and if available connect your DVD Player or VCR to the VCR Scart of the Dreambox.
- Plug in the power cable into the Dreambox and then into a 110V/60Hz or 230V/50Hz power socket.
- If you are using a switchable power socket please shutdown your Dreambox into deep standby before switching off the power socket. See chapter **4.1 Turning your Dreambox on and off**
- If you switch on your Dreambox for the first time, you will see the setup wizard. The setup wizard will guide you through the first time installation. Follow the instructions on the screen.
- Please note that the factory setting for the video format is CVBS (FBAS).



### 3. Start wizard

#### 3.1 Language selection

When you turn on Dreambox for the first time, or run 'factory reset' you have to choose OSD language first.



Select your desired language with the **Navigation-Buttons up** and **down**. Press the **OK-Button** to activate.

Pressing the **OK-Button** will enter next menu.

## 4. Basic operation

### 4.1 Turning your Dreambox on and off

Use the **Standby-Button** to turn your Dreambox on and off.

To put your Dreambox into Standby-Mode either press the **Standby-Button** on your remote control or on your Dreambox.



Holding down the **Standby-Button** on your remote control for three seconds will show the Shutdown / Standby menu.

### 4.2 Main OSD menu



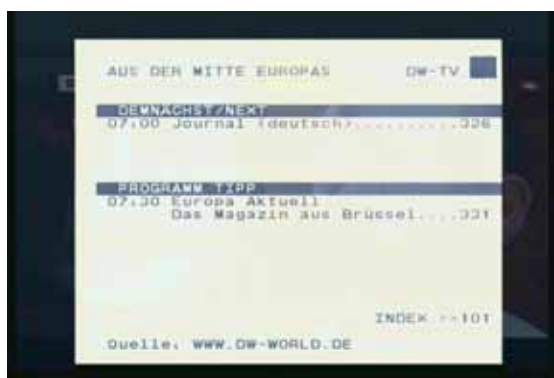
If no OSD menu is shown on your screen you can access the main OSD menu by pressing the **Menu-Button** on your remote control.

Through the main OSD menu you can access the submenus and functions of your Dreambox. Please use the **Navigation-Buttons left and right** or **up and down**, depending on you main OSD menu's view, to access the desired functions and submenus. Use the **OK-Button** to activate your selection.

As an alternative you can directly access the submenu or function by pressing the corresponding number in your remote control's **Numeric Keypad**.

### 4.3 Teletext

Pressing the **Teletext-Button** in TV or Radio mode will reveal the Teletext menu.



The option *Teletext - Software Decoder* will open the service's teletext.

See section **Teletext (TuxText)**.

Pressing the **Teletext-Button** again will exit the Teletext.

#### 4.4 Audio tracks

Press **Audio-Button** in TV or Radio mode will reveal the audio menu of the service.



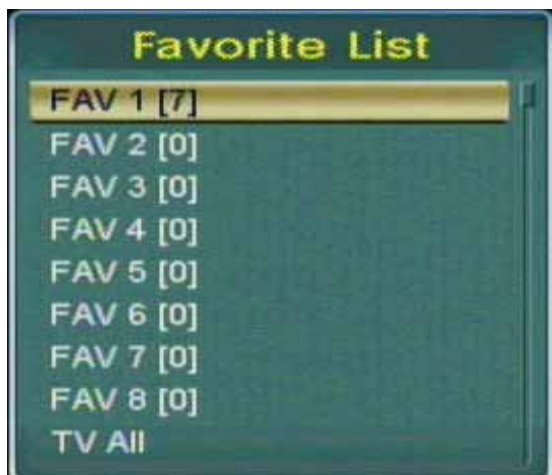
Use the **Navigation-Buttons up** and **down** to move to desired audio track. Press the **OK-Button** to select.

The contents of this menu will vary from service to service.

Move to the option "Stereo". Use the **Navigation-Buttons left** or **right** to choose the different audio modes, Left-Mono, Stereo, Right-Mono. Press the **OK-Button** to select.

#### 4.5 Favorite list

The Favorite List menu appears by pressing the **FAV-Button**.



You can see 7 channels in the FAV1 folder.

You can put your favorite channels in FAV1 - FAV8 folders.

You can create favorite lists from "Edit Favorites" menu.

#### 4.6 Zoom

The Zoom menu appears by pressing the **red Options-Button**.

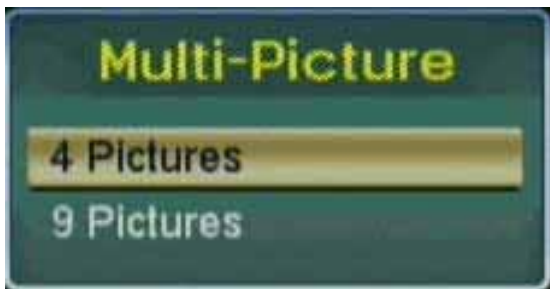


You can choose from 4-times and 16-times zoom.

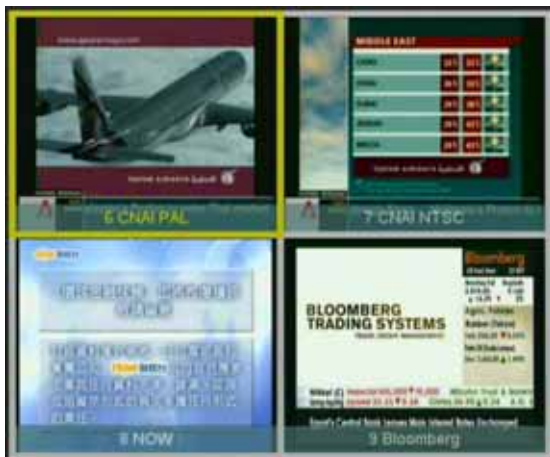
You can move up, down, left, right by **Navigation-buttons**.

## 4.7 Multi-picture

The Multi-picture menu appears by pressing the **green Options-Button**.



You can select to see 4 or 9 pictures in one. Press the **OK-Button** to select.

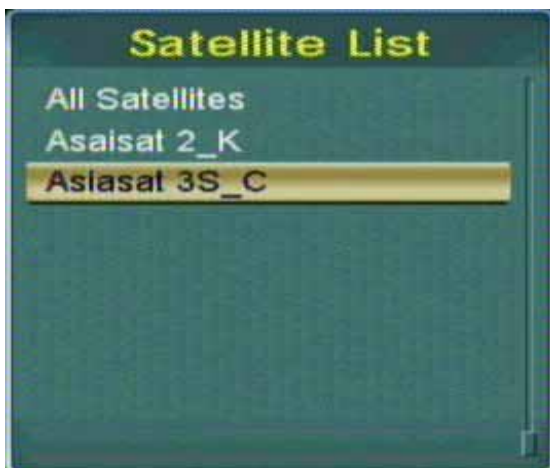


You can move up, down, left, right by using **Navigation-buttons**.

You can press **OK-Button** to see switch to the selected channel.

## 4.8 Satellite list

The Satellite List menu appears by pressing the **yellow Options-Button**.

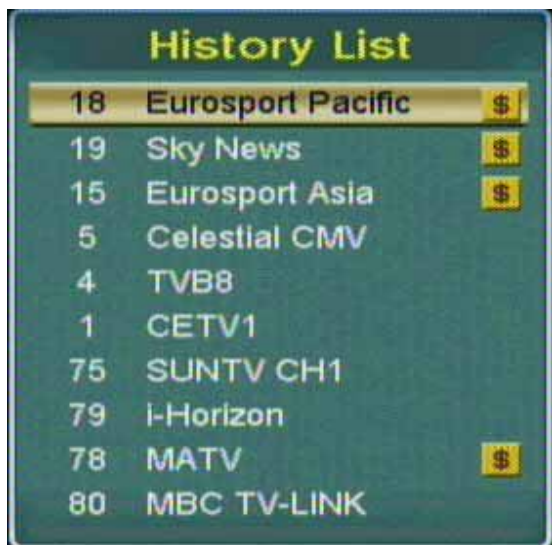


You can see all satellite that were scanned.

When you press **OK-Button**, you can see all channels on the selected satellite.

## 4.9 History list

The History List menu appears by pressing the blue **Options-Button**.



You can see all channels you watched so far.

The first channel in the list is the most recent one.

Select a channel and press **OK-Button**.

## 4.10 Radio channel

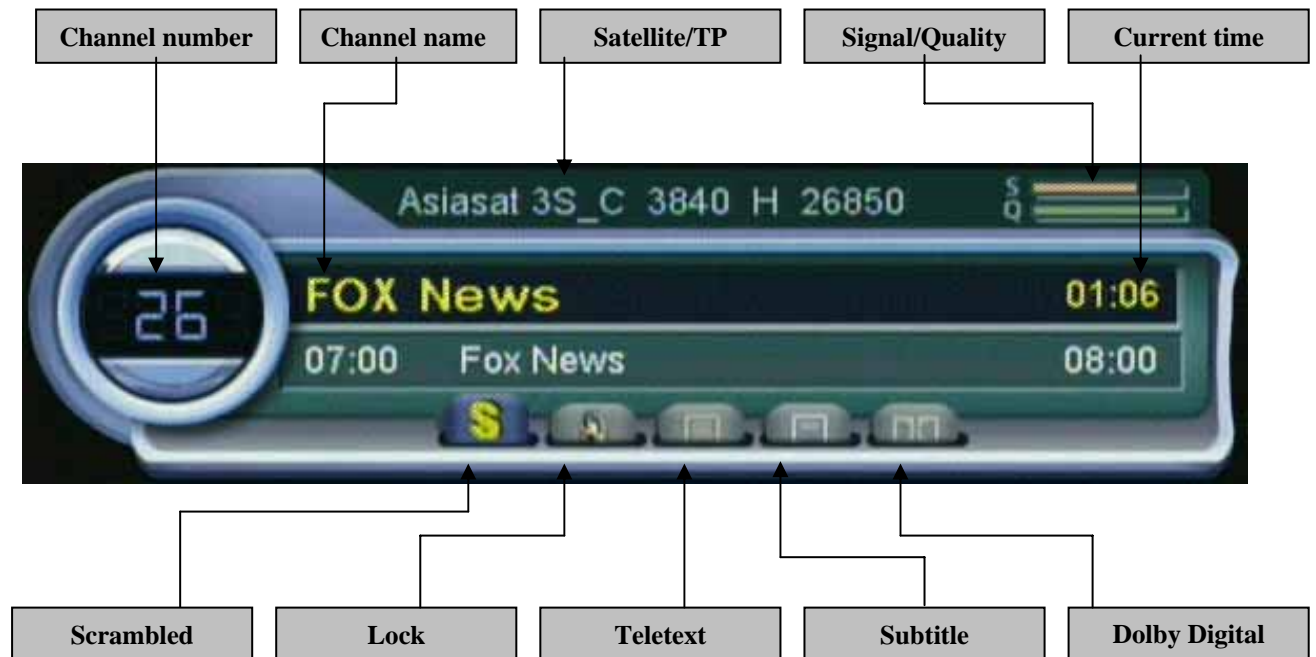
The Radio channel appears by pressing the blue **TV/Radio-Button**.



You can select TV or Radio mode by pressing the **TV/Radio-Button**.

## 4.11 Infobar

The Infobar appears by pressing the **OK-Button** once, if no OSD menu is shown on your screen. The Infobar shows all necessary Information about the selected service.



*Scrambled:* is highlighted yellow if you are watching an encrypted channel

*Locked:* is highlighted yellow if the channel is locked

*Teletext:* is highlighted yellow if the channel broadcasts Teletext information

*Subtitle:* is highlighted yellow if the channel broadcasts subtitle information

*Dolby Digital:* is highlighted yellow if the channel broadcasts an AC-3 audio track

## 5. Electronic Program Guide – EPG

The EPG menu appears by pressing the **EPG-Button**.



If no OSD menu is visible on your screen and you are in TV mode press the **TV-Button** to access the service list.

Press the **Info-Button** to get to the extended EPG.

Select „Channel EPG“ and press the **OK-Button** to activate it.

Use the **Navigation-Buttons** to navigate to the desired event and press the **OK-Button** to view selected channel.

Pressing the **EXIT-Button** will quit the EPG.



Press the **red Options-Button** to get to the daily EPG.

Pressing the **blue Options-Button** will show the “Timer” menu. You can reserve channel.

Use the **Navigation-Buttons** to navigate to the desired event and press the **OK-Button** to view selected channel.

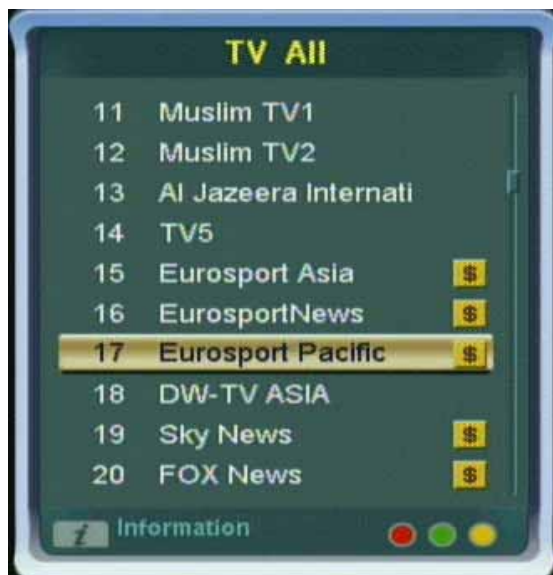
Pressing the **EXIT-Button** will quit the EPG.



## 6. Edit the channellist

### 6.1 Channel list

When you press **OK-Button** in TV or Radio mode, you can see channel list menu.



Press the **red Options-Button** to sort channels alphabetically.

Press the **green Options-Button** to sort channels by input alphabet.

Press the **yellow Options-Button** to sort FTA/Scramble/All channels.

Press the **OK-Button** to switch to the selected channel.



Press the **Info-Button** to view specific information.



## 6.2 Edit channels

If no OSD menu is visible on your screen, press the **Menu-Button** to open the main OSD menu. Navigate to the option "Edit Channels" and press the **OK-Button** to select.



Press the **red Options-Button** to lock or unlock the selected channel.

Press the **green Options-Button** to delete the selected channel.

Press the **yellow Options-Button** to move the selected channel.

Press the **blue Options-Button** to rename the selected channel.

Select channel and press the **OK-Button** to activate it.

## 6.3 Edit favorites

If no OSD menu is visible on your screen, press the **Menu-Button** to open the main OSD menu. Navigate to the option "Edit Favorites" and press the **OK-Button** to select.



Press the **red Options-Button** to change window.

Press the **green Options-Button** to delete the selected channel.

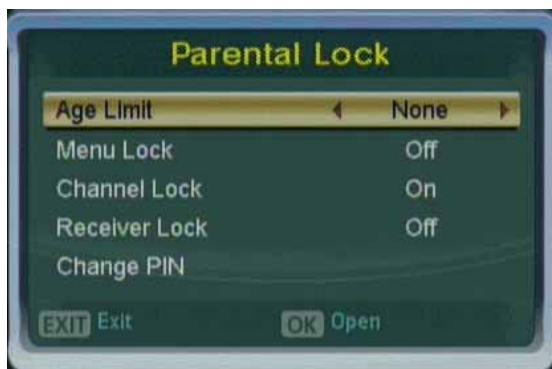
Press the **yellow Options-Button** to move or stop the selected channel.

Press the **blue Options-Button** to rename the selected channel.

Select channel and press the **OK-Button** to activate it.

## 6.4 Parental control

If no OSD menu is visible on your screen, press the **Menu-Button** to open the main OSD menu. Navigate to the option "Parental Lock" and press the **OK-Button** to select. It prevents anyone else from having unauthorized access to certain services, videos and audios. It also offers the possibility to only make certain services available to your kids. These protection mechanisms are controlled by a four digit PIN that only is know to you.



**Age Limit** : you can setages from 4 to 16.

**Menu Lock** : locks the Installation menu.

**Channel Lock** : locks channels.

**Receiver Lock** : locks the reciver from being turned on.

**Change PIN** : changes the PIN code.

**Attention** : If you loose your PIN you will have to reset your Dreambox to the factory defaults in order to deactivate any locks.

## 7. Setup

### 7.1 Language

If no OSD menu is visible on your screen, press the **Menu-Button** to open the main OSD menu. Navigate to the option "Language Settings" and press the **OK-Button** to select.



**OSD Language:** select your desired OSD language.

**Audio Language:** select you desired standard audio language.

**Subtitle Language:** select your desired standard subtitle language.

### 7.2 Setting the time zone

The time can be set automatically by switching the mode to *Auto*.



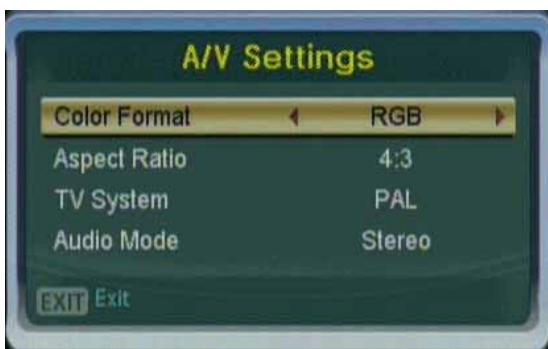
Select your time and time zone with the **Navigation Buttons up and down**. Press the **OK-Button** to activate.

Pressing the **green Options-Button** will enter next menu.

Pressing the **EXIT-Button** will enter previous menu.

### 7.3 A/V settings

If no OSD menu is visible on your screen, press the **Menu-Button** to open the main OSD menu. Navigate to the option "A/V Settings" and press the **OK-Button** to select.



**Color format :** 'CVBS'(FBAS), 'RGB' (Red, Green, Blue separated), YPbPr(YUV)

**Aspect Ratio :** '4:3' (16:9 programs will be displayed on 4:3 TV's with black beams at top and bottom), '16:9' (programs transmitted in 16:9 will be displayed automatically in 16:9, on 4:3 TV's the picture will be reduced in height).

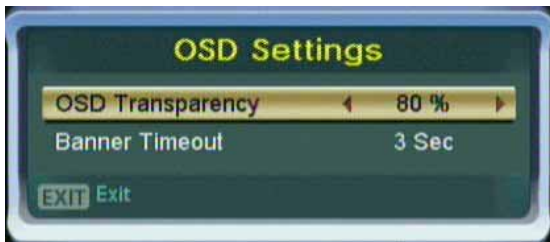
**TV System :** Choose the standard that your TV supports. 'PAL' or 'NTSC'.

**Note:** How to change the color format from CVBS or RGB to YPbPr if your screen is black  
The factory setting for the video output of your DM100 is RGB. If you connect it to a digital TV using a YUV cable you will only see a black screen. Follow these two steps to change this:

1. If you install your DM100 for the first time, press the **red Options-Button** and the **0** and **1** on the **Numeric-Keypad** to switch to YPbPr output
2. If you already have your Dreambox installed and switched TV sets you can still proceed in the same manner: Press the **red Options-Button** and the **0** and **1** on the **Numeric-Keypad** to switch to YPbPr output

### 7.3 OSD settings

If no OSD menu is visible on your screen, press the **Menu-Button** to open the main OSD menu. Navigate to the option "OSD Settings" and press the **OK-Button** to select.

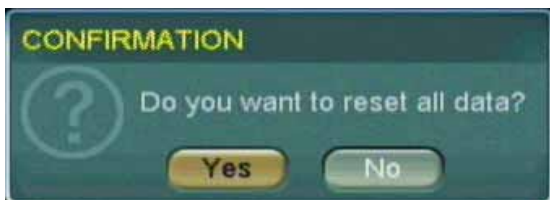


**OSD Transparency** : change transparency between 50 ~ 100%

**Banner Timeout** : set info bar timeout between 1 ~ 5sec.

### 7.4 Factory reset

If no OSD menu is visible on your screen, press the **Menu-Button** to open the main OSD menu. Navigate to the option "Factory Reset" and press the **OK-Button** to select.



Select 'Yes' or 'No'.

When you choose 'Yes' it will return to 'Select Language menu'.

## 8. Service searching

### 8.1 Select the satellite

You can select which satellites you want to scan in this menu.



Use the **Navigations-Buttons up/down** to navigate and press the **OK-Button** to select or unselect the highlighted satellite.

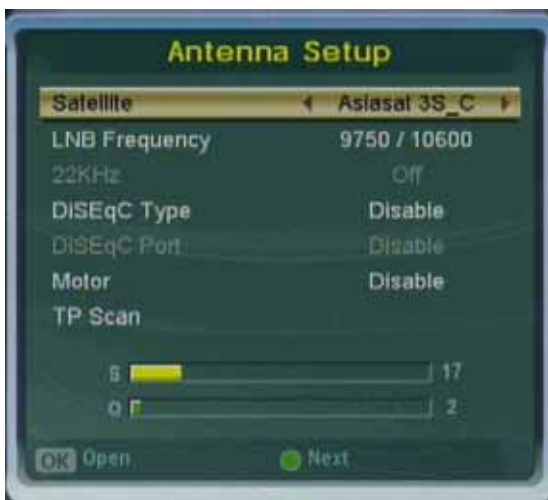
Pressing the **yellow Options-Button** enables you to rename the satellite.

Pressing the **green Options-Button** takes you to the next menu.

Pressing the **EXIT-Button** takes you to the previous menu.

### 8.2 Setting antenna setup

You can set up 'LNB, 22Khz, and DiSEqC, Motor' in this menu.



**LNB Frequency** : Select your desired frequency and press the **OK-Button**.

**22KHz** : Can be toggled on and off.

**DiSEqC Type** : Choose from DiSEqC 1 / DiSEqC 2 / DiSEqC 3 / DiSEqC 4 / SMATV.

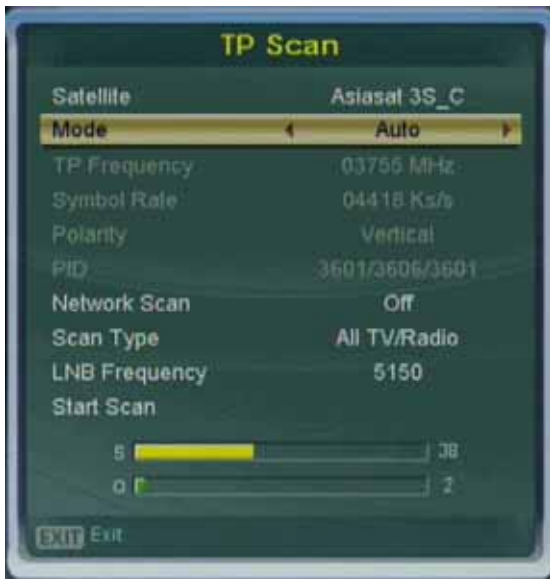
**DiSEqC Port** : If DiSEqC is enabled you can choose from port 1 to 16.

**Motor** : Choose from 1.2 / USALS. Press the **OK-Button** to enter the sub menu (See chapter 8.5).

Pressing the **green Options-Button** takes you to the next menu.

### 8.3.1 Automatic transponder scan

Set the Mode option to *Auto* by using the **Navigation-Buttons left/right** to scan a preset list of transponders.



**Mode** : Select Auto mode.

**Network Scan** : Choose from on and off.

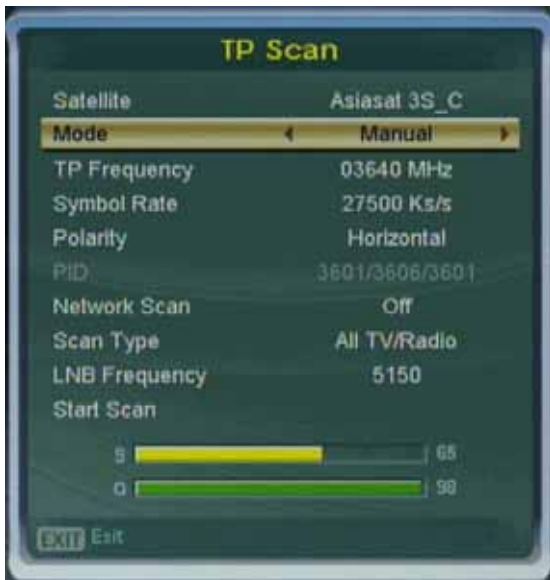
**Scan Type** : Choose from All TV/Radio, All TV, All Radio, Free TV, Free Radio.

**LNB Frequency** : Show the LNB Frequency which was set up in the Antenna Setup menu.

Select the Start Scan option and press the **OK-Button** to start the automatic scan.

### 8.3.2 Manual transponder scan

Set the Mode option to *Manual* by using the **Navigation-Buttons left/right** to scan a single transponder.



**Mode** : Select Manual mode.

**TP Frequency** : Set your desired transponder frequency.

**Symbol Rate** : Set your desired symbol rate.

**Polarity** : Choose from Horizontal and Vertical.

**Network Scan** : Choose from on and off.

**Scan Type** : Choose from All TV/Radio, All TV, All Radio, Free TV, Free Radio.

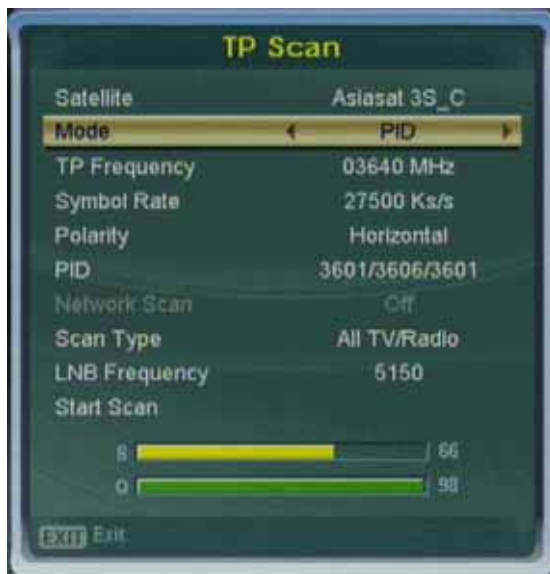
**LNB Frequency** : Show the LNB Frequency which was set up in the Antenna Setup menu.

Select the Start Scan option and press the **OK-Button** to start the automatic scan.



### 8.3.3 PID transponder scan

Set the Mode option to *PID* by using the **Navigation-Buttons left/right** to scan a desired PIDs on a single transponder.



**Mode** : Select PIDmode.

**TP Frequency** : Set you desired transponder frequency.

**Symbol Rate** : Set your desired symbol rate.

**Polarity** : Choose from Horizontal and Vertical.

**PID**: Enter your desired PID value.

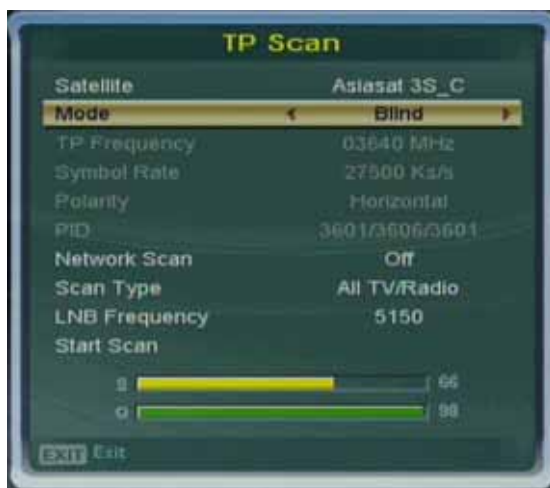
**Scan Type** : Choose from All TV/Radio, All TV, All Radio, Free TV, Free Radio.

**LNB Frequency** : Show the LNB Frequency which was set up in the Antenna Setup menu.

Select the Scart Scan option and press the **OK-Button** to start the automatic scan.

### 8.3.4 Blind transponder scan

Set the Mode option to *Blind* by using the **Navigation-Buttons left/right** to scan the whole possible range of transponders.



**Mode** : Select Blind mode.

**Network Scan** : Choose from on and off.

**Scan Type** : Choose from All TV/Radio, All TV, All Radio, Free TV, Free Radio.

**LNB Frequency** : Show the LNB Frequency which was set up in the Antenna Setup menu.

Select the Scart Scan option and press the **OK-Button** to start the automatic scan.

## 8.4 Channel scan

Once you have started the scan you will be taken to the Channel Scan menu.



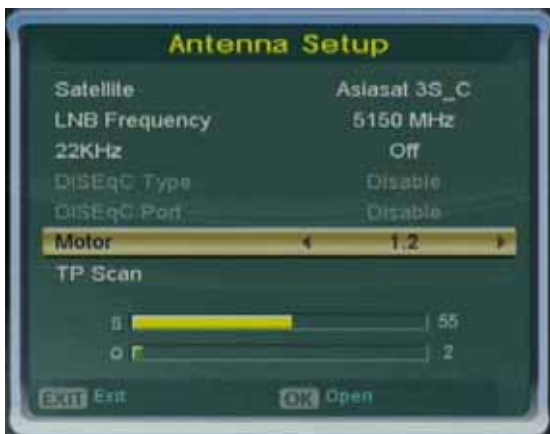
Wait until channel scan reaches 100%.

Press **OK-Button** to save all found channels.

## 8.5 Motor Setup

Use this type of configuration if you want to receive many satellites with a Rotor or Stab from a Single Universal LNB. These options are enabled if you select anything other than disabled for the motor option in the Antenna setup menu (See chapter 8.2).

### 8.5.1 DiSEqC 1.2



Use the **Navigation-Buttons up/down** and **left/right** to set the motor option to 1.2.

Press the **OK-Button**.



**Move** : Pressing the **Navigation-Buttons left/right** will move the motor.

**Store** : Press the **OK-Button** to save the position of the motor.

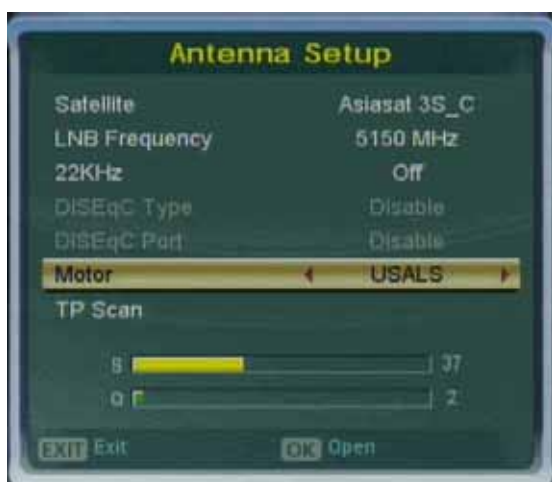
**Move Reference** : Press the **OK-Button** to return the motor to the 0 degree setting.

**Save Current Limit** : Limit the motor movement up to current position. Press the **OK-Button** to save.

**Remove Current Limit** : Deletes all saved limit.



## 8.5.2 USALS



Use the **Navigation-Buttons up/down** and **left/right** to set the motor option to USALS.

Press the **OK-Button**.



**My Longitude/Latitude:** Enter the latitude and longitude of your position.

**Goto:** Press the **OK-Button** and the motor will turn your dish to the selected satellite.

**Move :** Pressing the **Navigation-Buttons left/right** will move the motor. You can fine tune the motor.

**Store :** Press the **OK-Button** to save the position of the motor.

**Move Reference :** Press the **OK-Button** to return the motor to the 0 degree setting.

## 8.6 Edit transponder

If no OSD menu is visible on your screen, press the **Menu-Button** to open the main OSD menu. Navigate to the TP Edit option and press the **OK-Button** to select.

This menu will let you edit transponder lists that are used for the service scan. New transponders are usually announced in the Internet or in magazines.



Press the **red Options-Button** to add a transponder.

Press the **green Options-Button** to edit the selected transponder.

Press the **yellow Options-Button** to remove the selected transponder.

Press the **blue Options-Button** to rename the transponder.

## 9. Technical data

Fully MPEG-2 and DVB-S Compliant  
 Input Frequency 950 ~ 2150MHz  
 Tuner Symbol Rate: 1 ~ 45MS/s  
 1 x Smart Card-Reader & 1 x SIM Card  
 1 x SCART interfaces  
 USB-B interface  
 S/PDIF Interface for digital bit stream out(AC-3)  
 Supports Subtitle and Teletext(OSD)  
 Multi Picture View(4, 9 pictures)  
 Supports Electronic Program Guide(EPG), Picture In Graphic(PIG)  
 Supports SCPC and MCPC from C/Ku band  
 Favorite channel list editing and sorting  
 Full automatic service scan & blind scan  
 Supports Picture In Picture(PIP)  
 DiSEqC 1.0, 1.1, Motor(1.2) and USALS(1.3) Compatible  
 10/100MBit compatible Ethernet Interface  
 Zoom Function  
 Powerful Channel Sorting and Grouping  
 User friendly and 3D(Dimension) OSD  
 Slim and fashionable STB  
 Parental Control Video and Audio Mode  
 History Channel List( 9 Channels)  
 Internal Audio DAC(24bit, 192kHz Stereo DAC)

### **DBS-Tuner:**

Frequency Range 950 .... 2150 MHz  
 Signal Level - 65 dBm .... - 25 dBm  
 Signal-to-Noise Level 12 dB max.  
 DBS-Tuner Input Connector F-Type female  
 Input Impedance 75 Ohm  
 AFC +/- 3 MHz  
 Demodulation Shaped QPSK  
 FEC Viterbi and Reed-Solomon  
 Viterbirate 1/2, 2/3, 3/4, 5/6, 7/8, automatic assimilation  
 Roll-off Factor 35 %  
 Demultiplexing according ISO 13818-1

### **Video decoder:**

Video Compression MPEG-2 and MPEG-1 compatible  
 Video Standard PAL G/ 25 Hz  
 Video Formats 4:3 / 16:9  
 Footage 16:9, automatic assimilation for 16:9 TV-Device (over SCART)  
 Letterbox percolating for 4:3 TV-Device

### **Audio decoder:**

Audio compression MPEG-1 & MPEG-2 Layer I and II  
 Audio Mode Dual (main/sub), Stereo  
 Frequency: 32 kHz, 44.1 kHz, 48 kHz, 16 kHz, 22.05 kHz, 24 kHz

### **Output analog:**

Output Level L/R 0,5 Vss on 600 Ohm  
 THD > 60 dB (1 kHz)  
 Crosstalk < -65 Db

**Output digital:**

Output Level 0,5 Vss on 75 Ohm  
Sampled Data Filtering 32 kHz, 44.1 kHz, 48 kHz, 96 kHz  
S/PDIF-Output optical (AC3)

**Video parameter:**

Input Level FBAS 1 Vss +/- 0.3 dB on 75 Ohm  
Teletext filter in conformity with ETS 300 472 Standard

**TV-SCART:**

Output: RGB,CVBS

**USB:**

USB-B connector

**Ethernet:**

10/100 Mbit compatible interface

**LNB Power and polarization:**

LNB Current 500mA max. ; Short-circuit-proof  
LNB Voltage vertical < 14V without load, > 11,5V at 400mA  
LNB Voltage horizontal < 20V without load, > 17,3V at 400mA  
LNB shut-off at Standby-Mode

**Count of active satellite position:**

DiSEqC 1.0/1.1/1.2 SAT POSITION / SAT OPTION  
DiSEqC - Motor Control

**Power consumption:**

< 10W / 12V

**Input voltage:**

DC12V,alternating acurrent +/- 15%

**External power supply:**

*Input:* 110-240V AC / 50-60Hz / 0,6A  
*Output:* 12V = / 1A

## 10. Contact & support information

### Headquarter & Distribution:

Dream-Multimedia GmbH  
Pierbusch 24-26  
44536 Lünen  
Germany

### Dealer's Hotline:

(Dealers only)

Tel.: +49 (0)180 - 3 85 85 90 112 (0,09€/min.)

Fax: +49 (0)180 - 3 85 85 90 777 (0,09€/min.)

You can reach the dealer's hotline from :

Mo - Fr. 09:00 am - 03:00 pm

### Technical Hotline:

Tel.: +49 (0)180 - 3 85 85 90 110 (0,09€/min.)

Fax: +49 (0)180 - 3 85 85 90 111 (0,09€/min.)

You can reach the technical hotline from:

Mo - Fr. 09:00 am - 03:00 pm

### Sales:

Tel.: +49 (0)180 - 3 85 85 90 770 (0,09€/min.)

You can reach the sales hotline from:

Mo - Fr. 09:00 am - 03:00 pm

---

### Dealers & Pricing:

E-Mail: [info@dream-multimedia-tv.de](mailto:info@dream-multimedia-tv.de)

### Technical Support:

E-Mail: [support@dream-multimedia-tv.de](mailto:support@dream-multimedia-tv.de)

### Website:

Weblink: <http://www.dream-multimedia-tv.de>

### Support Forum:

Weblink: <http://www.dream-multimedia-tv.de/board>

### Software Support (actual images):

Weblink DM 100: <http://www.dm100.de>

---

## 11. Copyright Notes

© Dream-Multimedia 2008. All rights reserved.