

Application Note: A-05010975-A
MX-500/700/800 Universal Remote Control



This application note has been written to help installers gain a better understanding of how to integrate the MX-500/700/800 Universal Remote Control by Home Theater Master and also to unveil the unlimited possibilities that are available with the i-LiNE Lighting Control System.

MX-500/700/800 Universal Remote Control



The MX-500/700/800 family of Universal Remote Controls can be integrated with the i-LiNE system to control lighting devices and scenes. Infrared communications are made possible with the i-LiNE i-PoRT-IRs Infra Red Connection Port.

The MX-500 remote control must be setup manually as it does not have a personal computer interface. Refer to the MX-500 programming manual for instructions.

The MX-700 and MX-800 both have the ability to interface with a personal computer. The main difference between the two is that the MX-800 has RF transmission in addition to infra red.

This application note covers basic equipment setup, programming of the MX-700/800 Remote Control for controlling i-LiNE devices, configuration of the i-PoRT-IRs, and two basic examples: controlling an i-LiNE dimmer switch and programming an i-LiNE scene using the MX-700/800.

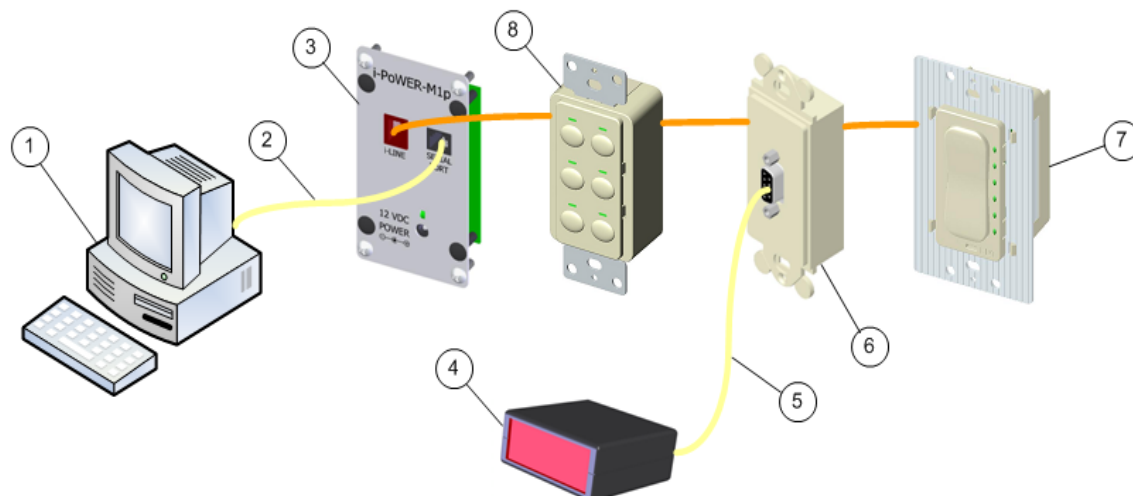
Minimum Required Equipment:

1. MX-700/800 Universal Remote Control
2. MX-700/800 Editor software
3. PC (personal computer)
4. i-LiNE IR Configuration Tool Software (included with the i-LiNE Installation Tool software)
5. i-PoRT-IRs, i-PoRT-COM, i-PoWER-M(x), i-ON-D
6. Serial Cable
7. Null Modem Cable (included with i-PoRT-IRs)

Equipment Setup

A basic i-LiNE network is shown below. The i-PoRT-IRs is connected to the i-PoRT-COM with a null modem cable. In this example, the computer is connected to the i-PoWER-M1p with a serial cable.

Figure 1 – Connecting the i-LiNE Network



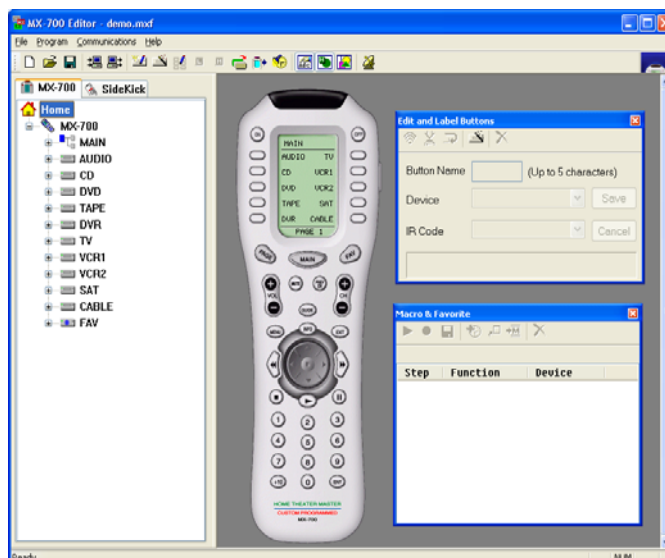
1. Personal computer	5. Null Modem Cable
2. Serial Cable	6. i-PoRT-COM
3. i-PoWER-M1p	7. i-ON-D Dimmer Switch
4. i-PoRT-IRs	8. i-ON-MB Multibutton Switch

Let's Get Started!

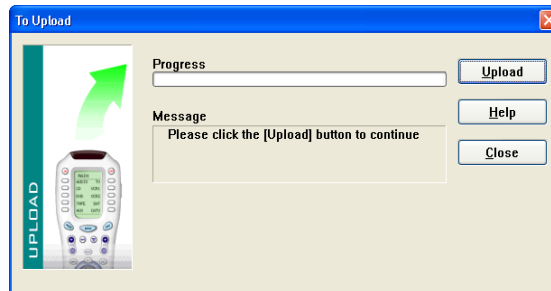
Programming the MX-700/800 to Control i-LiNE Devices:

The following procedures assume that the MX Editor Software has already been installed on the PC. For instructions on installing the MX Editor Software, refer to the MX-700/800 User Manual.

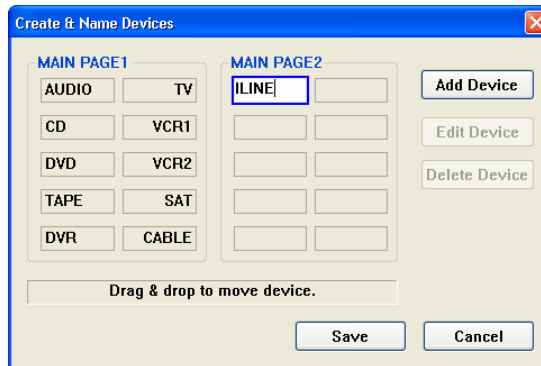
1. Connect the MX-700/800 to the serial port of the PC with the supplied cable.
2. Bring up the MX-700/800 editor on the PC.



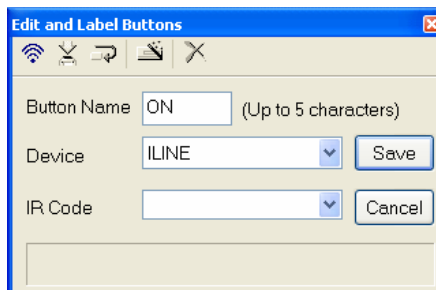
3. Upload current remote configuration. (Menu bar: Communications > Upload).



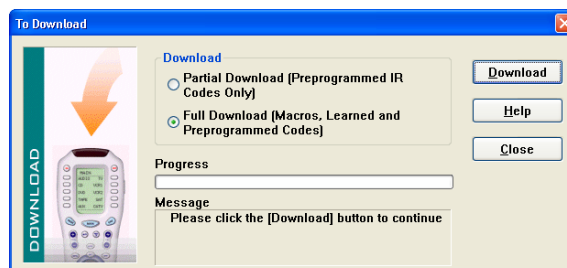
4. Add a device named **ILINE** to **MAIN**. (Menu bar: Program > 1. Create & Name Devices)



5. Double click on **ILINE**.
6. Click on the first button on the virtual MX-700/800. Click in the field next to Button Name in the “**Edit and Label Buttons**” window shown below. Type in a name (5 chars max), then click Save.



7. Repeat step 6 for each MX-700/800 button that you wish to program.
8. Download the configuration to the MX-700/800. (Menu Bar: Communications > Download > click Full Download > click Download).

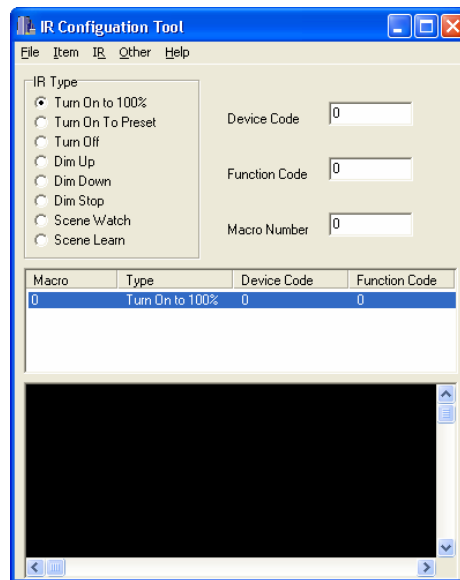


9. Save the configuration to a file on the PC so that changes can be made later.
10. Close the MX-700/800 editor.
11. Disconnect the serial cable from the PC.

Program the MX-700/800 using the IR Configuration Tool:

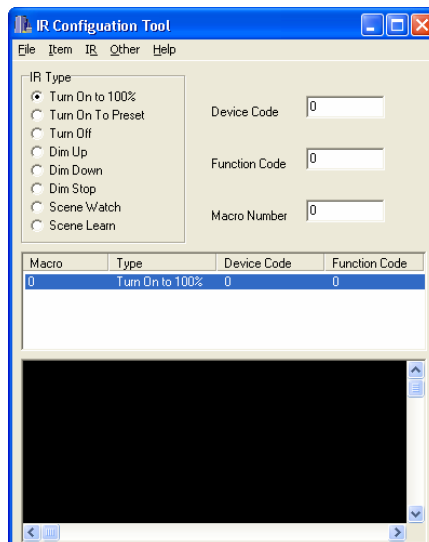
The following procedures assume that the i-LiNE Installation Tool software has already been installed on the PC. The software is available for free download at www.edt.biz.

1. Connect a serial cable from the i-PoWER-M(x) to the PC. (Note: The PC can be connected to any i-LiNE device with a serial port).
2. Connect a null modem cable from the i-PoRT-IRs to the i-PoRT-COM.
3. Plug the power supply into the i-PoRT-IRs.
4. Bring up the IR Configuration Tool software on the PC.
5. Create a *New Item* for each button on the MX-700/800. (*Menu: Item > New Item*)

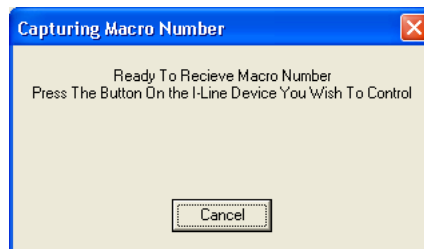


6. Change the *Type* of each item to one of the following:
 - Turn On to 100%
 - Turn On to Preset
 - Turn Off
 - Dim Up
 - Dim Down
 - Dim Stop
 - Scene Watch
 - Scene Learn

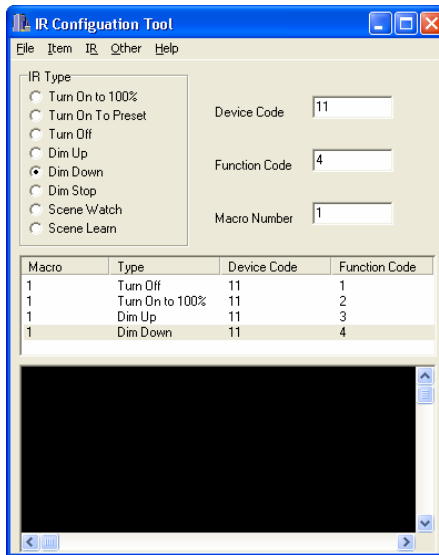
7. Click on the first item. Click on the *IR Type*. *Type* will change on the item list as shown below.



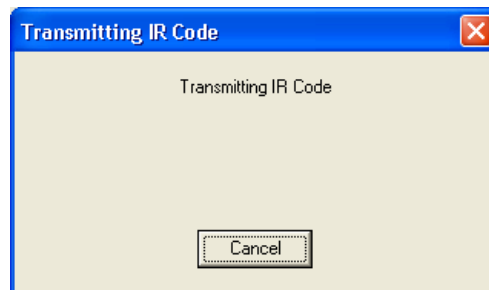
8. Change the *Macro Number* if you know it. If you don't know the macro number, click *Menu Bar: Other > Capture Macro*. The window below will appear. Press the button on the i-LiNE device. The window will disappear and the macro number will be inserted into the item list.



9. Change the device code to represent the MX-700/800. Use 11 or pick a code that is not used by your equipment.
10. Change the *Function Code* to a unique number. Number 1,2,3,4, etc.



11. Put the MX-700/800 in program mode. Hold MAIN and ENT for about 10 seconds until SETUP comes up. Then select LEARN.
12. Go to the first button on the MX-700/800 that you wish to program. Remote says *READY*.
13. Hold the MX-700/800 as close as possible to the left side of the red window on the i-PoRT-IRs. Programming will fail if the MX-700/800 is too far away.
14. Transmit the IR code for the first button to the MX-700/800 (*Menu bar: IR > Transmit IR code*). The red LED on the i-PoRT-IRs will start flashing.



15. The MX-700/800 says *GOOD* at the top of its screen and *Saved* at the bottom of its screen. The red LED will stop flashing and go off.
16. NOTE: If the remote does not say *GOOD* and *Saved* when you *Transmit IR code*, it did not program the button. Hold the remote closer to the left side of the red window of the i-PoRT-IRs and try transmitting again.
17. NOTE: MX-700/800 will go out of SETUP mode after a time. If it does, just hold MAIN and ENT again to put it back into SETUP mode.
18. Repeat steps 12-17 to program the remaining buttons on the MX-700/800.

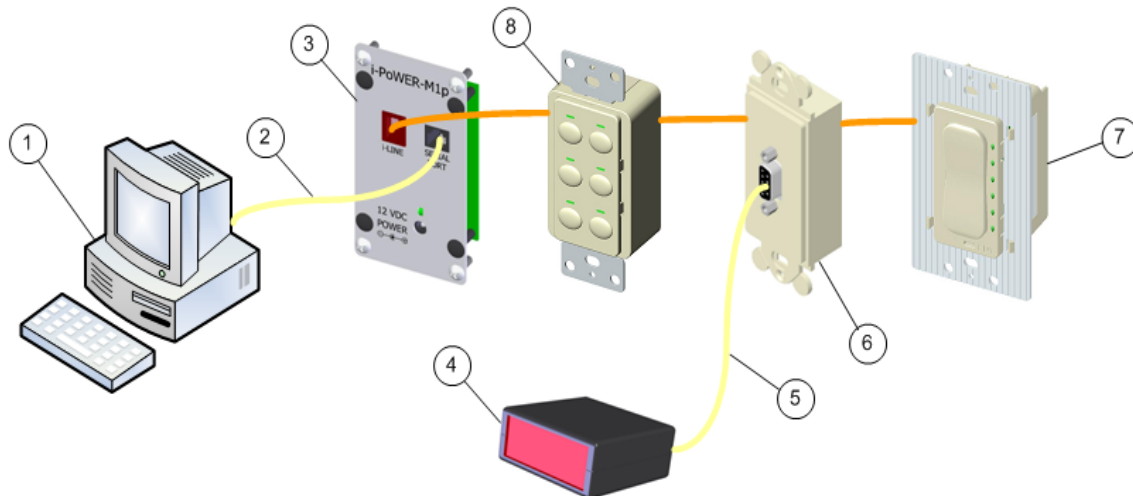
19. After programming all the buttons, write the macros from the IR Configuration Tool to the i-PoRT-IRs. Menu: *IR > Write*. **IMPORTANT: Do not push any keys on the MX-700/800 until the IR Write is finished.** The window below comes up. Watch the black screen near the bottom of the IR Configuration Tool window. Once it stops scrolling, the Write is finished. This takes a minute or so.



20. Test the MX-700/800. Reprogram buttons as necessary making sure to write the changes to the i-PoRT-IRs after any changes are made (*Menu bar: IR > Write*).

Example #1: Controlling a Dimmer Switch

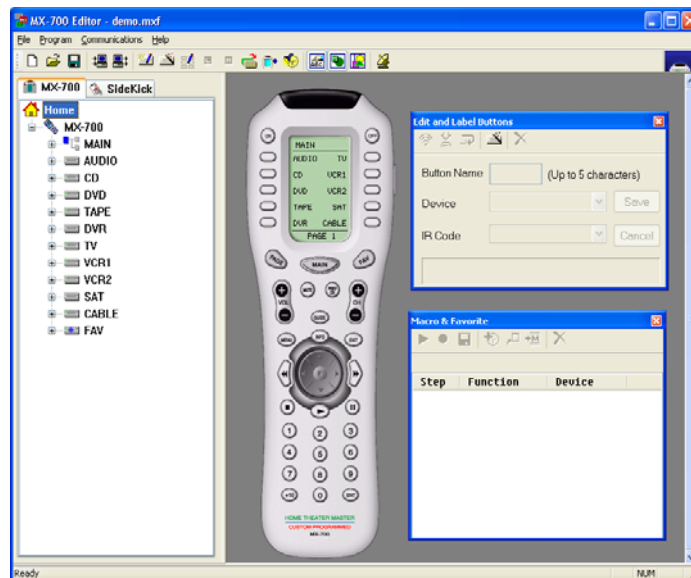
In this example, the following i-LiNE network setup will be used. The dimmer switch (device #7) will be controlled with the MX-700/800 remote control. This example assumes that the MX Editor Software has already been installed on the computer.



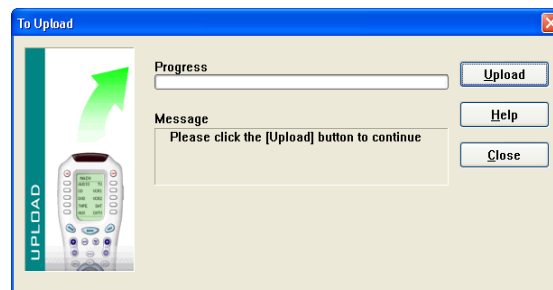
1. Computer	5. Null Modem Cable
2. Serial Cable	6. i-PoRT-COM
3. i-PoWER-M1p	7. i-ON-D Dimmer Switch
4. i-PoRT-IRs	8. i-ON-MB Multibutton Switch

Let's Get Started!

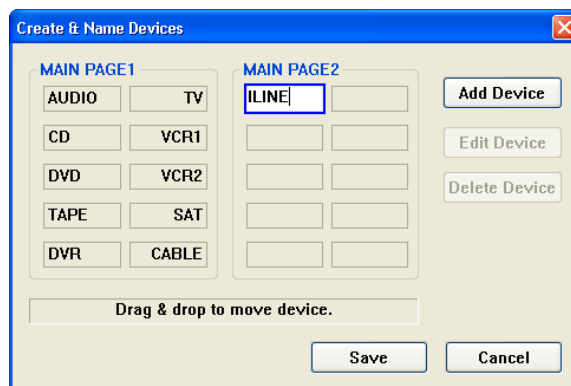
1. Connect the MX-700/800 to the serial port of the PC with the supplied cable.
2. Bring up the MX-700/800 editor on the PC.



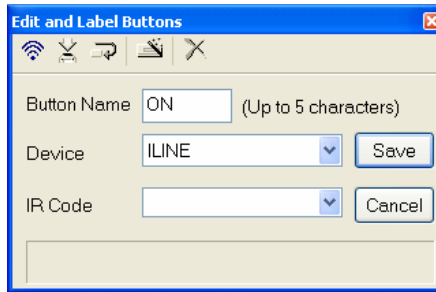
3. Upload current remote configuration. (Menu bar: Communications > Upload).



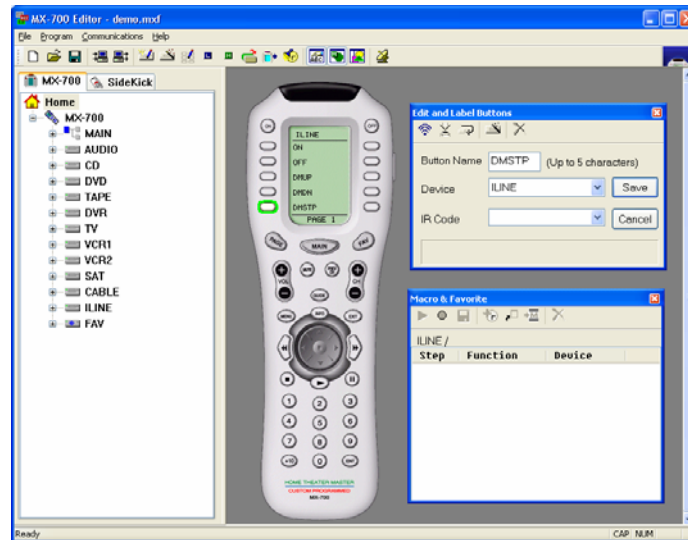
4. Add a device named ILINE to MAIN. (Menu bar: Program > 1. Create & Name Devices)



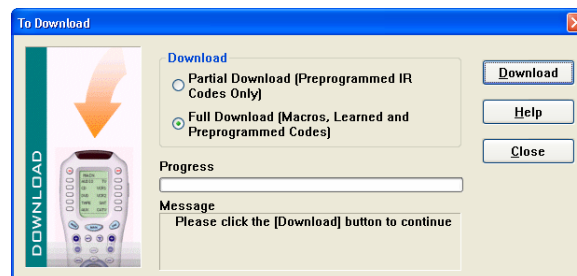
5. Double click on ILINE.
6. Click on the first button on the virtual MX-700/800. Click in the field next to Button Name in the *Edit and Label Buttons* window shown below. Type ON, then click Save.



7. Repeat step 6 to name four more buttons: *OFF*, *DMUP*, *DMDN*, and *DMSTP*. These buttons will turn the dimmer off, dim up, dim down, and stop dimming. Your virtual MX-700/800 should look similar to the one below.

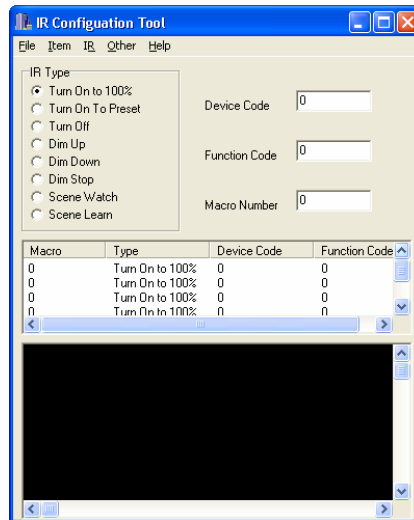


8. Download the configuration to the MX-700/800. (*Menu Bar: Communications > Download > click Full Download > click Download*).

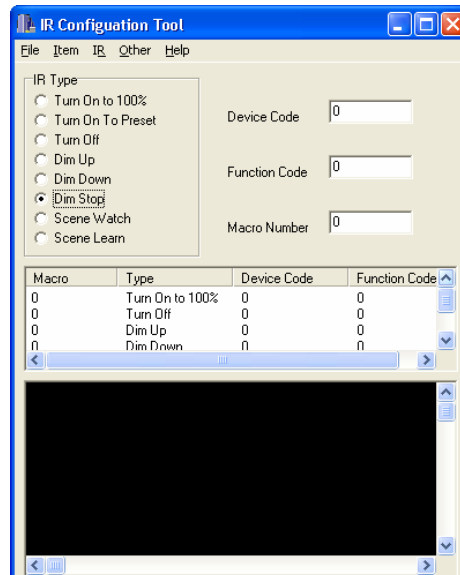


9. Save configuration to a file on the PC so that changes can be made later.
10. Close the MX-700/800 editor.
11. Disconnect the serial cable from the PC.
12. Connect the serial cable from the i-POWER-M1p to the PC.
13. Bring up the IR Configuration Tool software on the PC.

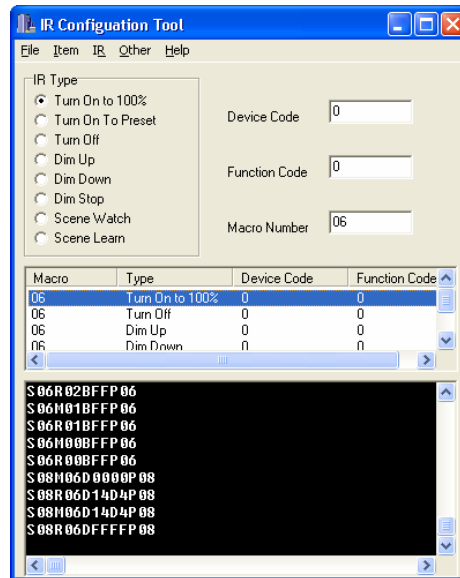
14. Create 5 'New Items'. (Menu: *Item > New Item*)



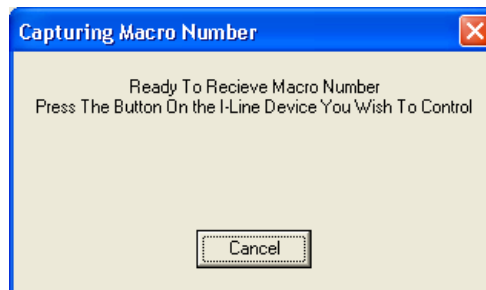
15. Click on the first item then click *Turn On to 100%*. Click on the second item then click *Turn Off*. Click on the third item then click *Dim Up*. Click on the fourth item then click *Dim Down*. Click on the fifth item then click *Dim Stop*. The screen should now look like the one below:



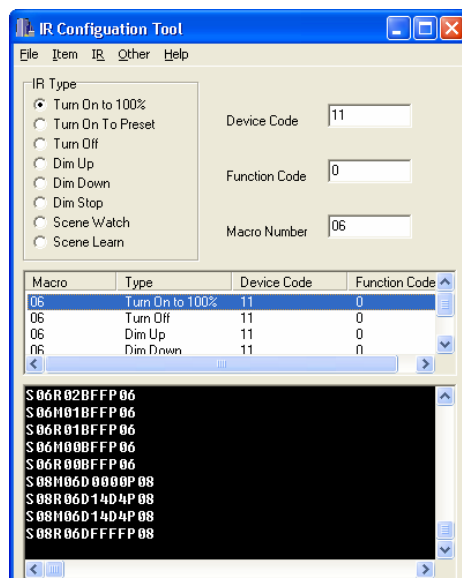
16. If you know the macro number for the dimmer switch, put that number in the *Macro Number* field for each item. In the example setup, the macro number for the dimmer switch is 06.



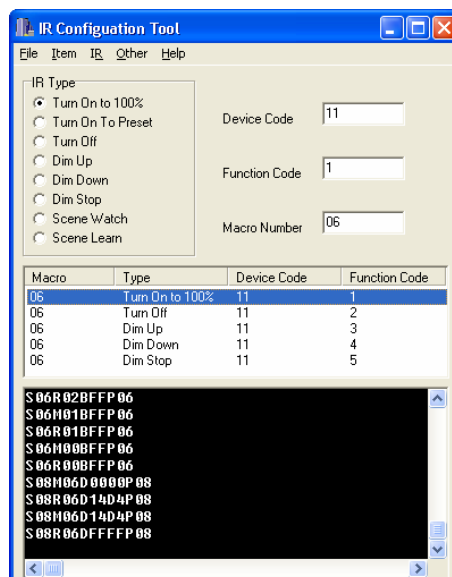
17. If you do not know the macro number, you can capture it; click *Menu Bar: Other > Capture Macro*. The window below will appear. Press the button on the i-LiNE device you wish to control. The window will disappear and the macro number will be inserted into the item. Copy the macro number to all five items.



18. Change the *Device Code* to represent the MX-700/800 remote control. Use 11 or pick a code that is not used by your other equipment.

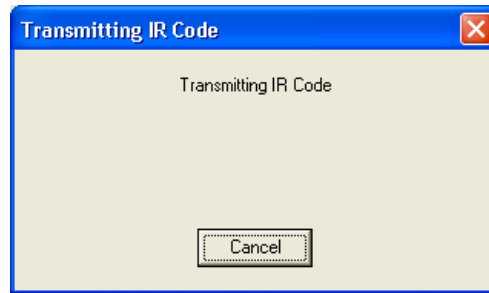


19. Change the *Function Codes* to 1, 2, 3, 4, and 5 as shown below:



20. Put the MX-700/800 in program mode by holding the MAIN and ENT keys for about 10 seconds until SETUP comes up, then push LEARN.
21. Push the first button in the ILINE page on the MX-700/800. The screen says *READY*.
22. Click on the first item, *Turn On to 100%*, in the IR Configuration Tool window.
23. Hold the MX-700/800 as close as possible to the left side of the red window on the i-PoRT-IRs. Programming will fail if the MX-700/800 is too far away.

24. On the PC, click *Menu bar: IR > Transmit IR code*. The red LED on the i-PoRT-IRs will start flashing as the code is transmitted to the MX-700/800.



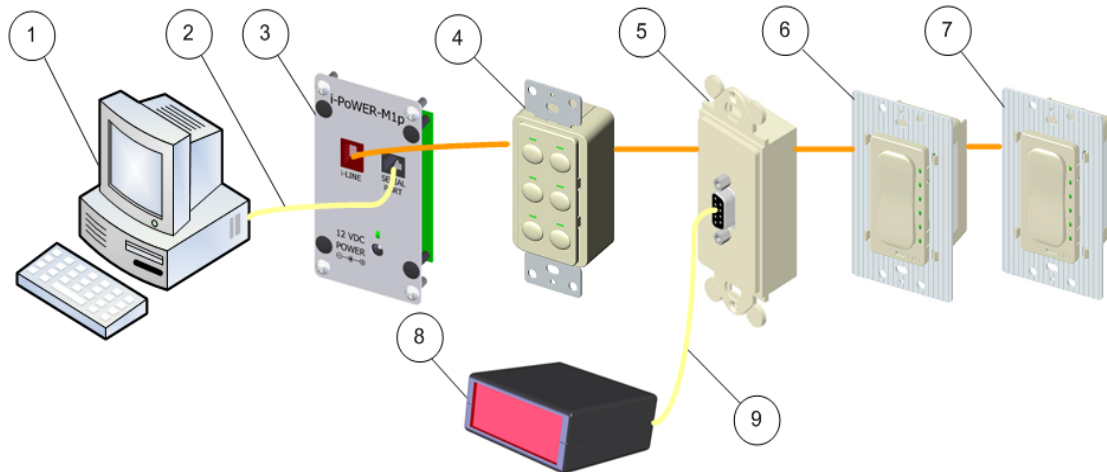
25. The MX-700/800 says *GOOD* at the top of its screen and *Saved* at the bottom of its screen. The red LED will stop flashing and go off.
26. NOTE: If the remote does not say *GOOD* and *Saved* when you click *Transmit IR code*, it did not program the button. Hold the remote closer to the left side of the red window of the i-PoRT-IRs and try transmitting again.
27. NOTE: MX-700/800 will go out of SETUP mode after a time. If it does, just hold MAIN and ENT again to put it back into SETUP mode.
28. Repeat steps 21-27 for the remaining four buttons (*OFF, DMUP, DMDN, DMSTP*).
29. After programming all the buttons, write the macros from the IR Configuration Tool to the i-PoRT-IRs (*Menu bar: IR > Write*). **IMPORTANT: Do not push any keys on the MX-700/800 until the IR Write is finished.** The window below comes up. Watch the black screen near the bottom of the IR Configuration Tool window. When it stops scrolling, the write operation is finished. This takes a minute or so.



30. Test the MX-700/800 buttons; they will now control the dimmer switch.
31. Save the file for later use.

Example #2: Programming a Scene

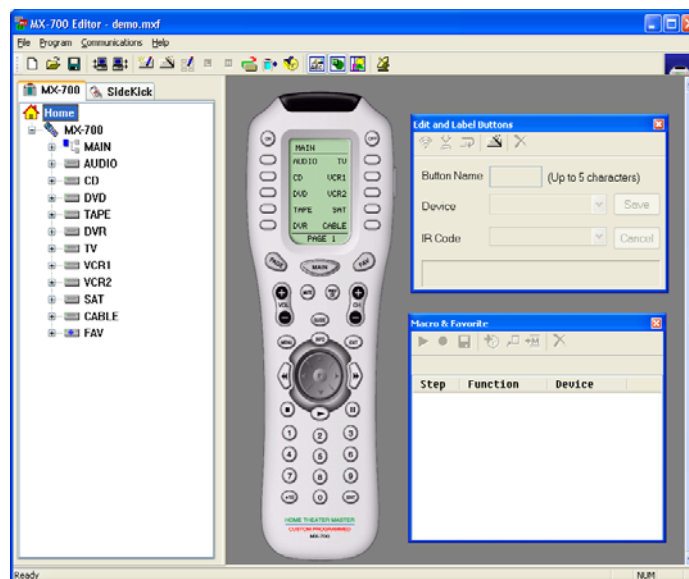
In this example, the following i-LiNE network setup will be used. Imagine the two dimmer switches 6 & 7 below control the lights in your home theater, and you wish to dim them before watching a movie with the touch of a button on your MX-700/800 remote control. The following procedure explains how to accomplish this. It is assumed that the MX Editor software and the i-LiNE Installation Tool software have already been installed on the PC.



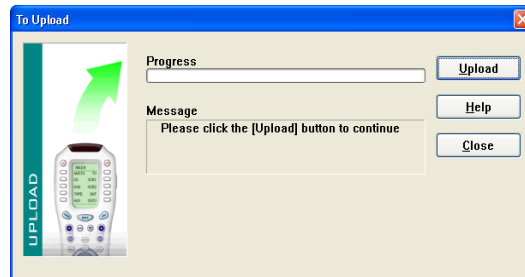
1. Computer	6. i-ON-D Dimmer Switch #1
2. Serial Cable	7. i-ON-D Dimmer Switch #2
3. i-PoWER-M1p	8. i-PoRT-IRs
4. i-ON-MB Multibutton switch	9. Null modem cable
5. i-PoRT-COM	

Let's Get Started!

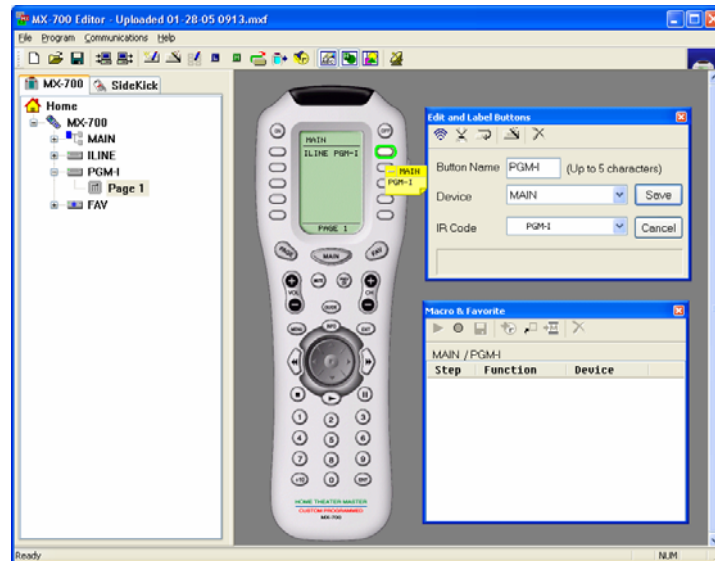
1. Connect the MX-700/800 to the serial port of the PC with the supplied cable.
2. Bring up the MX-700/800 editor on the PC.



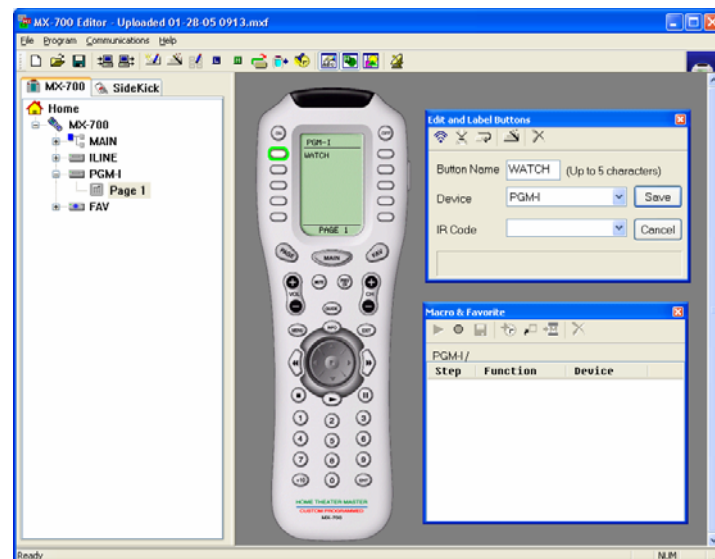
3. Upload current remote configuration. (Menu bar: *Communications > Upload*).



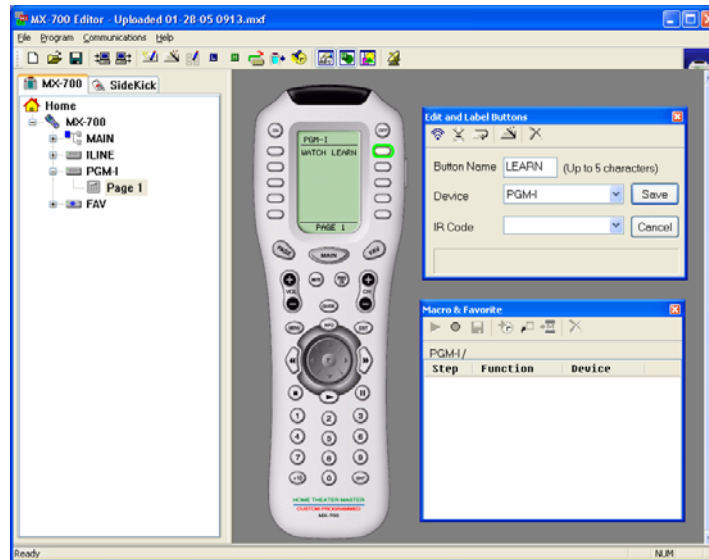
4. Add a device named PGM-I to MAIN. (Menu bar: *Program > 1. Create & Name Devices*)



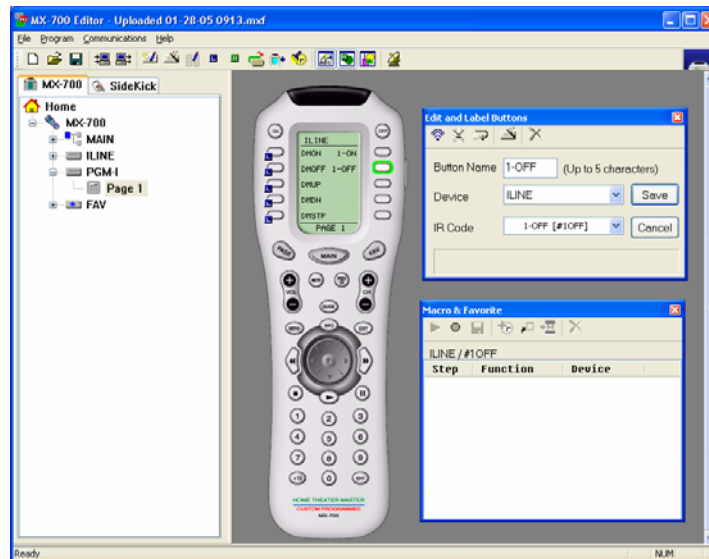
5. Double click on PGM-I.
6. Click on the first button on the virtual MX-700/800. Click in the field next to Button Name in the *Edit and Label Buttons* window and type *WATCH* then click *Save*. (Note: This button will be used to record the scene later).



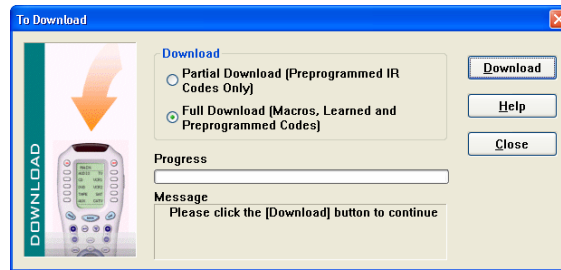
7. Click on another button and name it *LEARN*. This button will memorize the scene later.



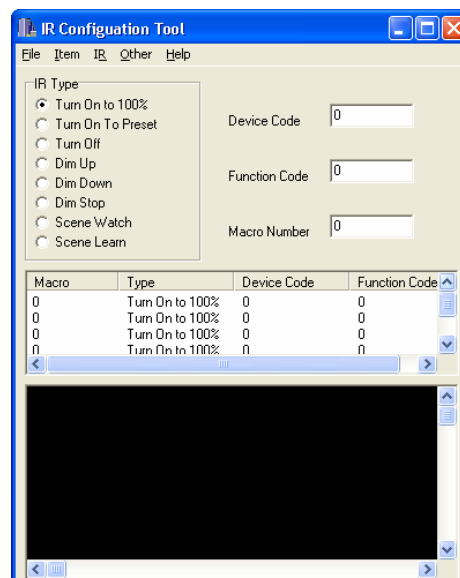
8. Click MAIN, then double click ILINE. Click on an unused button and name it *1-ON* (this button will turn the scene on). Click another unused button and name it *1-OFF* (this button will turn the scene off).



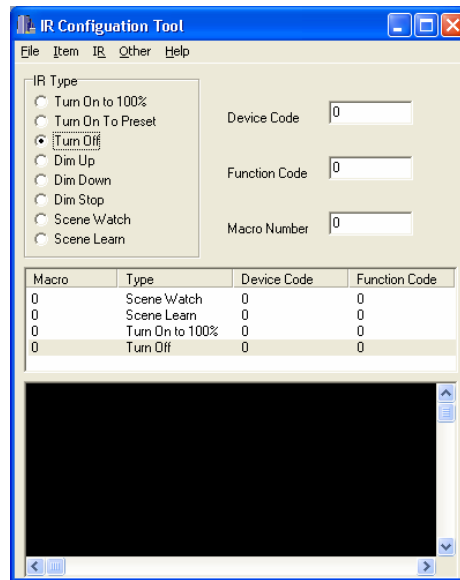
9. Download configuration to MX-700/800. (*Menu Bar: Communications > Download > click Full Download > click Download*).



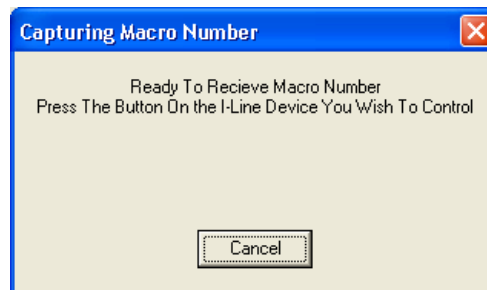
10. Save configuration to a file on the PC so that changes can be made later.
11. Close the MX-700/800 editor.
12. Disconnect the serial cable from the PC.
13. Connect the serial cable from the i-PoWER-M1p to the PC.
14. Bring up the IR Configuration software on the PC.
15. Create 4 'New Items'. (*Menu: Item > New Item*)



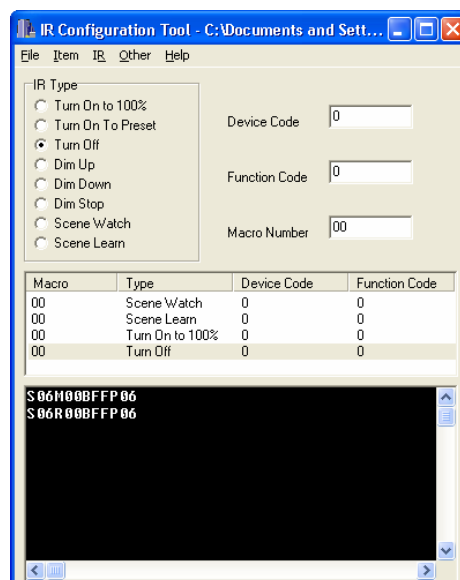
16. Click on the first item then click *Scene Watch*. Click on the second item then click *Scene Learn*. Click on the third item then click *Turn On to 100%*. Click on the fourth item then click *Turn Off*. The screen should now look like the one below:



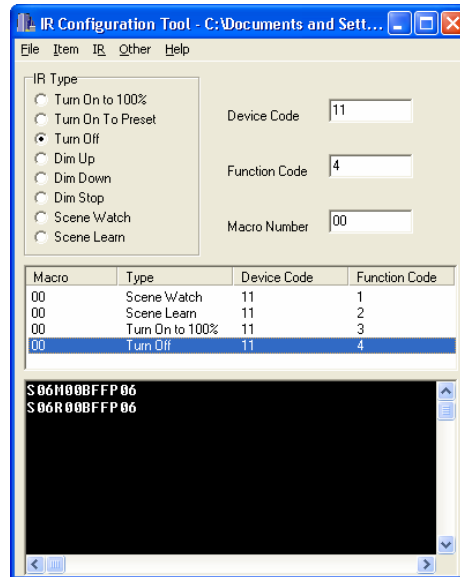
17. Capture the macro number for the i-ON-MB multibutton (device #4) (*Menu Bar: Other > Capture Macro*). The window below will appear.



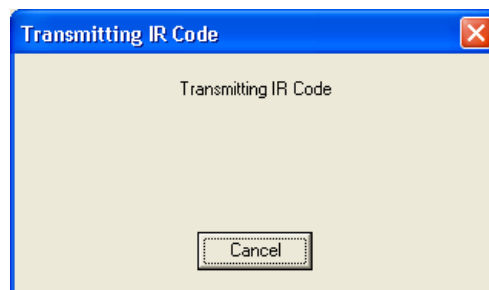
18. Press the upper left hand button on the multibutton switch. The window will disappear and the macro number will be inserted into the item. Copy the macro into all items.



19. Change the device code to represent the MX-700/800. Use 11 or pick a code that is not used by your equipment.
20. Change the Function Codes to 1, 2, 3, and 4. The screen should look similar to the one below:



21. Put the MX-700/800 in program mode by holding the MAIN and ENT keys for about 10 seconds until SETUP comes up. Then push LEARN.
22. Go into PGM-I and push WATCH. Remote says *READY*.
23. Click on the first item of the IR Configuration Tool (*Scene Watch*).
24. Hold the MX-700/800 as close as possible to the left side of the red window on the i-PoRT-IRs. Programming will fail if the MX-700/800 is too far away.
25. Click on *Menu bar: IR > Transmit IR code*. The red LED on the i-PoRT-IRs will start flashing.



26. The MX-700/800 says *GOOD* at the top of its screen and *Saved* at bottom. The red LED will stop flashing and go off.
27. NOTE: If the remote does not say *GOOD* and *Saved* when you *Transmit IR code*, it did not program the button. Hold the remote closer to the left side of the red window of the i-PoRT-IRs and try transmitting again.

28. NOTE: MX-700/800 will go out of SETUP mode after a time. If it does, just hold MAIN and ENT again to put it back into SETUP mode.
29. Go to PGM-I and push LEARN.
30. Click on the second item, *Scene Learn*, and click *Menu bar: IR > Transmit IR code*.
31. On the MX-700/800, push MAIN then ILINE then 1-ON.
32. Click on the third item, *Turn on to 100%*, and click *Menu bar: IR > Transmit IR code*.
33. On the MX-700/800, push 1-OFF.
34. Click on the fourth item, *Turn off*, and click *Menu bar: IR > Transmit IR code*.
35. After programming all the MX-700/800 buttons, write the macros from the IR Configuration Tool to the i-PoRT-IRs (click *Menu bar: IR > Write*). **IMPORTANT: Do not push any keys on the MX-700/800 until the IR Write is finished.** The window below comes up. Watch the black screen near the bottom of the IR Configuration Tool window. When it stops scrolling, the write is finished. This takes a minute or so.



36. Program a scene. Push MAIN, PGM-I, then WATCH on the MX-700/800. The LED on the multibutton switch (device #4) will start flashing slowly indicating that it is in program mode.
37. Turn dimmers #1 and #2 up to about 50%. Push LEARN on the MX-700/800. The LED on the multibutton stops flashing. The scene is now programmed.
38. Turn off dimmers #1 and #2.
39. Activate the scene. On the MX-700/800, push MAIN, ILINE, and 1-ON. The dimmers come up halfway. Push 1-OFF, the dimmers goes off.

Note to the User: The above example created a very simple scene involving only two i-LiNE devices. Scenes can be programmed to involve many more i-LiNE devices and other infrared equipment including TVs, stereos, etc. Refer to the i-LiNE User Manual and the manuals for your equipment for detailed instructions on scene programming.