

DATA PROJECTOR

XJ-A Series

XJ-A147/XJ-A247/XJ-A257

XJ-M Series

XJ-M146/XJ-M156

XJ-M246/XJ-M256

Network Function Guide

- In this manual, “XJ-A Series” and “XJ-M Series” refer only to the specific models listed above.
- Be sure to read the “Safety Precautions” and “Operating Precautions” in the “Setup Guide” document that comes with the Data Projector, and make sure you use this product correctly.
- Keep this manual in a safe place for future reference.
- Visit the site below for the latest version of this manual.
<http://world.casio.com/manual/projector/>

- DLP is a registered trademark of Texas Instruments of the United States.
- Microsoft, Windows, and Windows Vista are registered trademarks or trademarks of Microsoft Corporation in the United States and other countries.
- HDMI, the HDMI Logo and High-Definition Multimedia Interface are trademarks or registered trademarks of HDMI Licensing, LLC.
- Mac OS is a trademark or registered trademark of Apple, Inc. in the United States and other countries.
- XGA is a registered trademark of IBM Corporation of the United States.
- PJLink is a pending trademark or a registered trademark in Japan, the United States, and other countries and areas.
- Crestron is a registered trademark of Crestron Electronics, Inc. of the United States.
- AMX is a registered trademark of AMX LLC of the United States.
- Android is a trademark or registered trademark of Google Inc.
- Other company and product names may be registered product names or trademarks of their respective owners.
- Portions of this product are based in part on the work of the Independent JPEG Group.

- The contents of this User's Guide are subject to change without notice.
- Copying of this manual, either in part or its entirety is forbidden. You are allowed to use this manual for your own personal use. Any other use is forbidden without the permission of CASIO COMPUTER CO., LTD.
- CASIO COMPUTER CO., LTD. shall not be held liable for any lost profits or claims from third parties arising out of the use of this product or this manual.
- CASIO COMPUTER CO., LTD. shall not be held liable for any loss or lost profits due to loss of data due to malfunction or maintenance of this product, or any other reason.
- The sample screens shown in this manual are for illustrative purposes only, and may not be exactly the same as the screens actually produced by the product.

Contents

Network Function Overview	7
What the network function lets you do... ..	7
Software Required to Use Network Functions.....	8
Scope of this Manual's Content	8
Projecting Computer Screen Contents Over a LAN Connection	9
Workflow from LAN Connection to Projection	9
Connecting the Wireless Adapter to the Projector.....	10
Establishing a Direct Wireless LAN Connection between the Projector and a Computer	11
Wireless LAN Connection Overview	11
Using a Projector Built-in SSID (Simple or Generic) to Establish a Wireless LAN Connection	12
<i>To use a projector simple connection SSID to establish a wireless LAN connection and project</i>	12
<i>To use a projector generic SSID to establish a wireless LAN connection and project</i>	15
Using a User SSID to Establish a Wireless LAN Connection	18
<i>To create a user SSID</i>	19
<i>To use a user SSID to establish a wireless LAN connection and project</i>	22
Connecting the Projector to an Outside Network without Terminating a Direct Wireless LAN Connection with a Computer	25
<i>To connect the projector to a wireless LAN access point without terminating a direct wireless LAN connection with a computer</i>	26
<i>To establish a wired LAN connection between the projector and a router while maintaining a direct wireless connection between the projector and a computer (XJ-M Series only)</i>	28
Establishing a Connection between the Projector and Computer Via a Wireless LAN Access Point.....	29
Connection Overview.....	29
Connection Procedures.....	30
<i>To connect the projector to a wireless LAN access point</i>	30
<i>To establish a connection between the projector and computer and project via a wireless LAN access point</i>	33

Connecting the Projector to a Computer via a Wired LAN (XJ-M Series Only)	35
Wired LAN Connection Overview	35
Wired LAN Connection Procedures	36
<i>To use a LAN cable to connect a computer directly to the projector</i>	36
<i>To establish a wired LAN connection between the projector and a computer via a router</i>	38
Using Network Connection	39
Network Connection Window	39
Network Connection Operations	40
Network Connection Button Operations	40
Network Connection Function Menu Operations	41
Outputting Computer Audio from the Projector Speaker	42
Projecting a Video Stream	43
<i>To project a video stream</i>	43
Remotely Controlling a Computer from a Smart Device	44
<i>To start PC remote</i>	44
<i>To exit PC Remote</i>	44
Other Network Connection Operations	45
<i>To terminate the current wireless LAN connection and re-connect</i>	45
<i>To delete connection information (passphrase) stored by Network Connection</i>	45
Projector Network Settings	46
Using the Projector Setup Menu	46
<i>To display wired LAN information (XJ-M Series only)</i>	47
<i>To display wireless LAN information</i>	48
<i>To change the SSID</i>	49
<i>To change the IP settings</i>	50
<i>To initialize network settings</i>	51

Using the Projector Admin Pages	52
Logging In to the Projector Admin Pages over a Wireless LAN Connection	53
<i>To log in to the Projector Admin pages over a wireless LAN connection</i>	<i>53</i>
Logging In to the Projector Admin Pages Over a Wired LAN Connection (XJ-M Series Only)	54
<i>To log in to the Projector Admin pages over a wired LAN connection</i>	<i>54</i>
<i>To change the computer IP address based on the projector's IP address and connect by wired LAN</i>	<i>55</i>
<i>To change the projector's IP address based on the computer's IP address and connect by wired LAN</i>	<i>56</i>
<i>To establish a wired LAN connection between the projector and a computer</i>	<i>57</i>
Supported Operations after Logging In to the Projector Admin Pages.....	58
<i>To display the system status.....</i>	<i>58</i>
<i>To configure Control Panel page network settings</i>	<i>59</i>
<i>To configure Network Settings page network settings</i>	<i>60</i>
<i>To change the password for logging in to the Projector Admin pages.....</i>	<i>62</i>
<i>To initialize all settings on the Projector Admin pages.....</i>	<i>63</i>
<i>To input information for connecting to a Crestron controller (XJ-M Series Only).....</i>	<i>63</i>
<i>To log out from the Projector Admin pages</i>	<i>63</i>
Remotely controlling the Projector Over a LAN Connection	64
<i>To remotely control the projector from a computer connected via a LAN.....</i>	<i>64</i>
Control Panel Page Remote Control Items.....	66

Projector File Viewer Operations..... 67

Uploading a File to Projector Internal Memory.....	67
Logging In to the Transfer File Page.....	67
<i>To log in to the Transfer File page over a wireless LAN connection</i>	<i>67</i>
<i>To log in to the Transfer File page over a wired LAN connection (XJ-M Series Only).....</i>	<i>69</i>
<i>To log out from the Transfer File page</i>	<i>69</i>
<i>To change the password for logging in to the Transfer File page.....</i>	<i>69</i>
Supported Operations while Logged In to the Transfer File Page.....	70
Projector File Viewer Operations.....	71
Displaying the Viewer Control Page	71
<i>To display the Viewer Control page over a wireless LAN connection.....</i>	<i>71</i>
<i>To display the Viewer Control page over a wired LAN connection (XJ-M Series Only).....</i>	<i>72</i>
<i>To return to the projector top page from the Viewer Control page.....</i>	<i>72</i>
Viewer Control Page Operations	72

Appendix 73

Using the Token Wizard73

To install Network Connection on a USB flash drive 73

*To use a USB token to connect a computer
to the projector via a wireless LAN..... 74*

Projecting Via a Wireless LAN Connection
with Various Different Devices.....74

Using the Network Connection to Project from a Mac OS..... 74

Using C-Assist to Project from a Smart Device..... 75

Using MobiShow to Project from a Smart Device 75

Troubleshooting76

Wireless LAN Connection between the Projector and a Computer 76

Projector Admin Pages 77

Transfer File Pages 77

Network Function Overview

XJ-M Series projectors support both wireless LAN connection and wired LAN connection.
XJ-A Series projectors support wireless LAN connection only.

What the network function lets you do...

- **Connect a computer to the projector over a wireless LAN and project an image of the computer screen**

Computer screen images can be projected by the projector without a cable connection. Connecting the projector to a computer via a wireless LAN access point enables projection while the computer is connected to an outside network (Internet or Intranet).

- **Connect a computer to the projector over a wired LAN and project an image of the computer screen (XJ-M Series only)**

A computer can be connected directly to the projector by cable, or indirectly via a router for projection of the computer screen contents. The computer whose screen contents are being projected can also be connected to an external network (Internet or intranet).

- **Use a wireless LAN connection to simultaneously project screen images from four computers**

The projected image can be divided into four segments for simultaneous projection of the screens of four computers over a LAN connection.

- **Use a LAN connection to project the main screen or extended screen of a computer (Network Connection)**

The screen area that extends off the right side of a desktop displayed on a laptop computer can be projected as the extended screen.

- **A movie playback image can be projected alone as a separate screen over a LAN connection (Network Connection)**

Movie data can be sent to the projector over a LAN for playback projection without exiting the normal desktop display on a computer.

- **Output of computer audio over a LAN connection (Network Connection)**

In addition to computer screen images, computer audio can also be output by the projector.

- **Transfer files to projector internal memory from a computer connected via a LAN**

Various types of files can be transferred from a computer via a LAN to projector internal memory for playback using the projector's File Viewer.

- **Remotely control the projector from a computer connected via a LAN**

Input source switching and other normal projector operations can be performed from a computer connected via a LAN.



Note

- For more information about Network Connection, see "Software Required to Use Network Functions" below.

Software Required to Use Network Functions

The software required to use network functions depends on the type of device to be connected to the projector via a LAN, as shown in the table below.

Device	Software
Computer running Windows	Network Connection (for Windows)
Computer running Mac OS	Network Connection (for Mac OS)

Visit the website at the URL below to download the software.

<http://www.casio-intl.com/support/>



Important!

- Before installing the above software on a computer, be sure to visit the CASIO website for information about minimum system requirements, downloading, usage conditions, and other precautions you need to observe.
- For information about how to install the above software, see its download web page.

Scope of this Manual's Content

The procedures in this manual are presented based on a Windows computer running Network Connection.

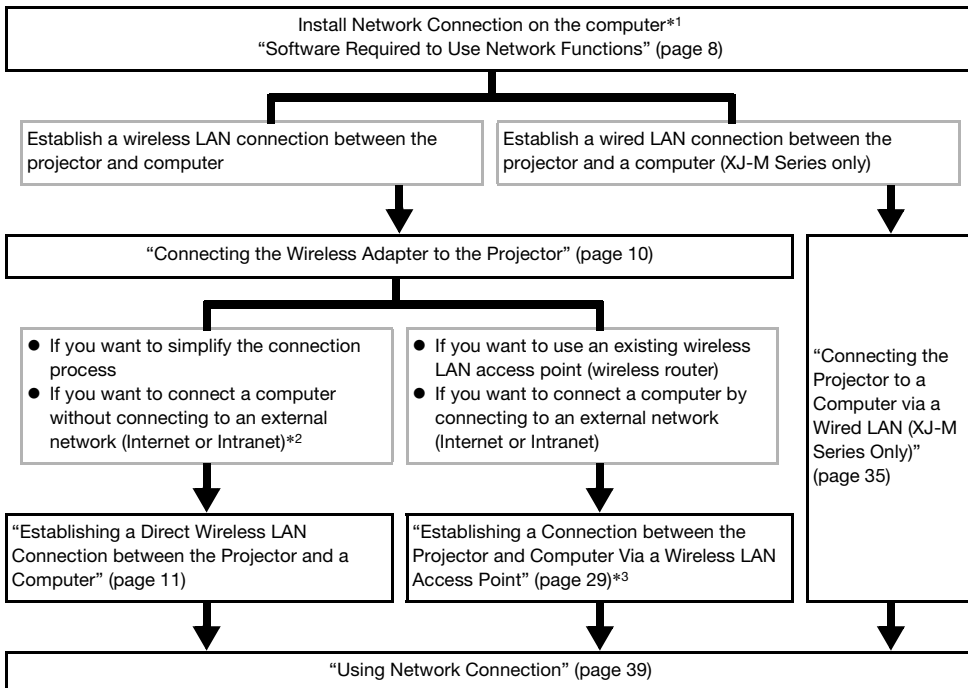
If you are using a different type of device, see the software user documentation that can be obtained from the download page of each type of software.

Projecting Computer Screen Contents Over a LAN Connection

This section covers everything you need to know for establishing a LAN connection between the projector and a computer, and projecting the computer's display contents.

Workflow from LAN Connection to Projection

There are a number of different ways to establish a LAN connection between the projector and a computer. The workflow below describes what you need to do to create a LAN connection.



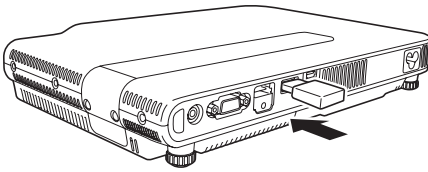
*1 After installing Network Connection on one computer, you can use the computer to create USB tokens that can be used for LAN connection of other computers to the projector. For details, see “Using the Token Wizard” (page 73).

*2 After establishing a direct wireless LAN connection between the projector and computer, the computer will be able to connect with an outside network (Internet or Intranet) via the projector. For more information, see “Connecting the Projector to an Outside Network without Terminating a Direct Wireless LAN Connection with a Computer” (page 25).

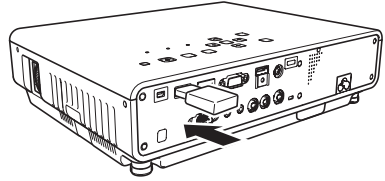
*3 To connect this way, you need first to establish a direct LAN connection between the projector and computer, and then configure settings to connect the projector to the wireless LAN access point.

Connecting the Wireless Adapter to the Projector

Connect the YW-40 wireless adapter that comes with the projector to the projector's USB-A port, as shown in the illustration below.



XJ-A Series



XJ-M Series

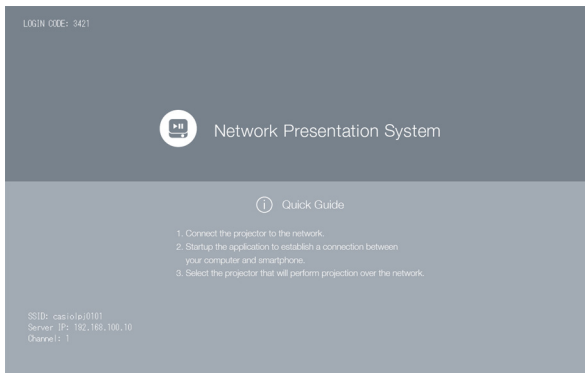
If “On” is selected for “Plug and Play” on the setup menu, the operations describe below will be performed when the wireless adapter is connected to the projector.

- **If the wireless adapter is connected while projector power is turned on**

Upon connection, the input source will switch to either “Wireless” (XJ-A Series) or “Network” (XJ-M Series) and projection of the LAN connection standby screen will start automatically.

- **If the wireless adapter is connected and then projector power is turned on**

Starting up the projector will cause the input source to switch to either “Wireless” (XJ-A Series) or “Network” (XJ-M Series) and projection of the LAN connection standby screen to start automatically.



LAN Connection Standby Screen (Network Presentation System Screen)

Caution

Keep the wireless adapter that comes with the projector out of the reach of small children. Accidental swallowing of the adapter can interfere with proper breathing and create a life-threatening situation.

Important!

- Never try to use the wireless adapter that comes with the projector with any other type of device.

Establishing a Direct Wireless LAN Connection between the Projector and a Computer

Wireless LAN Connection Overview

The procedures in this section explain how to use Network Connection, which is installed on a computer, to search for the SSID emitted by the projector and to establish a connection between the computer and projector.

SSID Type

There are three different projector SSID types, each of which is described below. Note that the connection method and required operations are different depending on SSID type.

SSID Type	Description	Applicable SSID
Simple Connection SSID* ¹ (Built in)	These are special-purpose SSIDs for using Network Connection on a Windows computer to establish a wireless LAN connection with the projector. This type of SSID is preset on the projector, so the name and setting details cannot be modified. This SSID type makes it easy to establish a wireless LAN connection between the projector and a computer without configuring complex settings.	casio!pj0001 casio!pj0002 casio!pj0003 casio!pj0004
Generic SSID* ¹ * ² (Built in)	This type of SSID prompts for input of a passphrase to connect. This type of SSID is preset on the projector, so the name and setting details cannot be modified.	casio!pj0101* ³ casio!pj0102 casio!pj0103 casio!pj0104
User SSID* ² (Must be created.)	Requires creation of an SSID by you. Creation of only a single user SSID is supported. You can also specify the encryption type and passphrase input for connection.	casio!pj0<any character string>

*¹ The projector performs wireless LAN communication using WPA-PSK AES encryption for comparatively secure wireless data communication. Data sent between the projector and computer is encrypted based on the projector built-in passphrase and login code.

*² These SSIDs can also be used when establishing a wireless LAN connection between the projector and a computer running Mac OS or a smart device (Android, iOS). For more information, see “Projecting Via a Wireless LAN Connection with Various Different Devices” (page 74).

*³ Initial SSID setting.

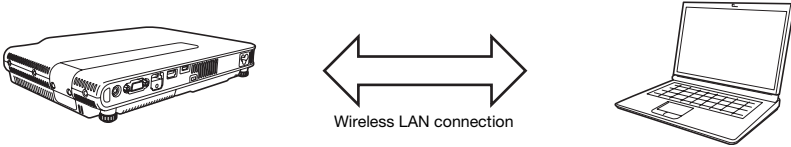
Wireless LAN Connection and Projection

A single projector can have up to 8 computers connected via wireless LAN at the same time. However, one computer screen image (full projection image size) or up to a maximum of four computer screen (projection image divided into four parts) images can be projected at the same time.

For details about projection operations on a computer after it is connected, see “Using Network Connection” (page 39).

Using a Projector Built-in SSID (Simple or Generic) to Establish a Wireless LAN Connection

This section explains how to use Network Connection to search for a projector built-in SSID (simple or generic) and establish a wireless LAN connection between the projector and computer. The operations described here establish a wireless LAN connection between the projector and computer and start projection of the computer screen.



To use a projector simple connection SSID to establish a wireless LAN connection and project

Projector Operation

- 1. Connect the wireless adapter to the projector (page 10) and then turn on the projector.**
 - The input source will automatically switch to either “Wireless” (XJ-A Series) or “Network” (XJ-M Series), and projection of the LAN connection standby screen will start.
 - If projection of the LAN connection standby screen does not start, press the [INPUT] key. On the “Input” dialog box that appears, use the [▼] and [▲] keys to select either “Wireless” (XJ-A Series) or “Network” (XJ-M Series) and then press the [ENTER] key.
- 2. Press the [MENU] key and then select the following: “Network Settings” → “Projector Wireless LAN Settings” → “SSID”. On the dialog box that appears, select one of the following: casiolpj0001, casiolpj0002, casiolpj0003, or casiolpj0004.**
- 3. Press the [ESC] key twice to return to “Network Settings”.**
- 4. Use the [▼] key to select “Update Network Settings” and then press the [ENTER] key.**
 - This will display a confirmation dialog box asking if you want to update network settings.
- 5. Press the [▲] key to select “Yes”, and then press the [ENTER] key.**
 - This applies the SSID change to the projector and closes the dialog box. Wait until the LAN connection standby screen starts to be projected again.
 - If multiple projectors are in use nearby, select a separate SSID for each projector.

6. Start up Network Connection.

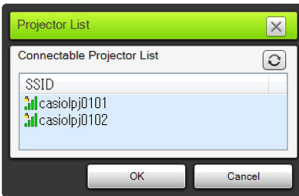
- The Network Connection window will appear with the message “Connecting”.



- If your computer is running Windows 7, 8 or 8.1 and the “Set Network Location” dialog box appears, click [Cancel] to close the dialog box.
- One of the dialog boxes shown below will appear as soon as Network Connection finds the projector to connect with.

If this dialog box appears:	It indicates this status:	Advance to this step:
“Projector List”	Multiple connectable projectors were detected.	Step 7
“Enter the login code.”	Only one connectable projector was detected.	Step 8

7. Click the SSID of the projector you want to connect with, and then click [OK].



8. On the “Enter the login code.” dialog box that appears, enter the user name and login code.



- In the “User Name” box, you can enter any name up to 20 characters long. The user name you enter here will be displayed as the user name on the projection screen.
- In the “Login Code” box, enter the four-digit number shown in the upper left corner of the LAN connection standby screen that is being projected.

9. When everything is the way you want, click [OK].

- While the projector is connected to a computer over a wireless LAN, a Network Connection window like the one shown below will be displayed on the computer screen. The computer screen image (main screen) will be projected.



- For details about Network Connection window operations, see “Using Network Connection” (page 39).

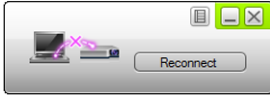
10. To terminate the wireless LAN connection and discontinue computer screen projection, click the close button (✕) in the upper right corner of the Network Connection window.

- This closes the Network Connection window and returns the projected image to the LAN connection standby screen.



Note

- The login code is updated to a new value each time the projector is started up. Each time you perform the above procedure to connect, check the login code on the projection screen and input the correct login code for the current startup.
- If the projector cannot be found in step 6 of the above procedure, the Network Connection window appearance will change as shown below.



If this happens, check the points listed below, click [Reconnect], and then perform the above procedure again from step 6.

- Check if the wireless adapter is correctly connected to the projector.
See “Connecting the Wireless Adapter to the Projector” (page 10).
- Check if the projector is turned on and projecting the LAN connection standby screen.
- Confirm that the SSID in the lower left corner of the LAN connection standby screen is any one of the following: casiolpj0001, casiolpj0002, casiolpj0003, casiolpj0004.
If a different SSID is shown, perform the above procedure from step 2.

To use a projector generic SSID to establish a wireless LAN connection and project

Projector Operation

- 1. Connect the wireless adapter to the projector (page 10) and then turn on the projector.**
 - The input source will automatically switch to either “Wireless” (XJ-A Series) or “Network” (XJ-M Series), and projection of the LAN connection standby screen will start.
 - If projection of the LAN connection standby screen does not start, press the [INPUT] key. On the “Input” dialog box that appears, use the [▼] and [▲] keys to select either “Wireless” (XJ-A Series) or “Network” (XJ-M Series) and then press the [ENTER] key.

- 2. Press the [MENU] key and then select the following: “Network Settings” → “Projector Wireless LAN Settings” → “SSID”. On the dialog box that appears, select one of the following: casiolpj0101, casiolpj0102, casiolpj0103, or casiolpj0104.**
 - This operation is not necessary if you plan on using only one projector without changing the initial default SSID setting (casiolpj0101). Advance to step 6.

- 3. Press the [ESC] key twice to return to “Network Settings”.**

- 4. Use the [▼] key to select “Update Network Settings” and then press the [ENTER] key.**
 - This will display a confirmation dialog box asking if you want to update network settings.

- 5. Press the [▲] key to select “Yes”, and then press the [ENTER] key.**
 - This applies the SSID change to the projector and closes the dialog box. Wait until the LAN connection standby screen starts to be projected again.
 - If multiple projectors are in use nearby, select a separate SSID for each projector.

6. Start up Network Connection.

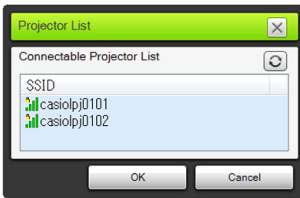
- The Network Connection window will appear with the message “Connecting”.



- If your computer is running Windows 7, 8 or 8.1 and the “Set Network Location” dialog box appears, click [Cancel] to close the dialog box.
- One of the dialog boxes shown below will appear as soon as Network Connection finds the projector to connect with.

If this dialog box appears:	It indicates this status:	Advance to this step:
“Projector List”	Multiple connectable projectors were detected.	Step 7
“Enter the passphrase or WEP key.”	Only one connectable projector was detected.	Step 8

7. Click the SSID of the projector you want to connect with, and then click [OK].



- 8. On the “Enter the passphrase or WEP key.” dialog box that appears, enter the user name and passphrase.**



- In the “User Name” box, you can enter any name up to 20 characters long. The user name you enter here will be displayed as the user name on the projection screen.
- In accordance with the SSID of the projector being connected to, input the characters shown below into both the “Passphrase/WEP Key Input” and “Confirm” boxes.

SSID of Projector Being Connected	Input Character String (Passphrase)
casiolpj0101	casiolpj01
casiolpj0102	casiolpj02
casiolpj0103	casiolpj03
casiolpj0104	casiolpj04

- 9. When everything is the way you want, click [OK].**

- This displays the dialog box shown below.



- 10. In the “Login Code” box, enter the four-digit number shown in the upper left corner of the LAN connection standby screen that is being projected.**


- The user name you input in step 8 of this procedure will be shown in the “User Name” box, so you can leave it as it is, if you want.

- 11. When everything is the way you want, click [OK].**

- While the projector is connected to a computer over a wireless LAN, a Network Connection window like the one shown below will be displayed on the computer screen. The computer screen image (main screen) will be projected.



- For details about Network Connection window operations, see “Using Network Connection” (page 39).

12. To terminate the wireless LAN connection and discontinue computer screen projection, click the close button () in the upper right corner of the Network Connection window.

- This closes the Network Connection window and returns the projected image to the LAN connection standby screen.

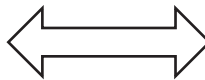


Note

- After you perform the above operation, Network Connection will remember the passphrase used for the last connection. Because of this, you will not need to input the passphrase again if you re-connect the same computer to the projector (as long as the SSID has not been changed).
- In the case of a wireless LAN connection using a generic SSID, settings can be configured to eliminate the need for login code input. For information about how to configure settings, see “To configure Control Panel page network settings” (page 59).

Using a User SSID to Establish a Wireless LAN Connection

You can create a user SSID and use it to establish a wireless LAN connection when you want to accomplish any one of the following: connection using a specific security system, make a connection more secure, or connect without configuring security settings (without a passphrase or log in code).



Wireless LAN connection



Important!

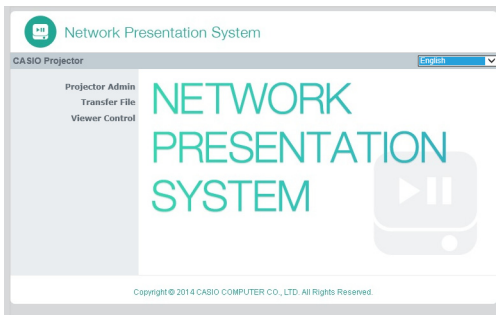
- To create a user SSID, you will need to first establish a LAN connection between the projector and computer using one of the other connection methods.
- The projector can have only one user SSID assigned to it at a time. Each time you perform the procedure under “To create a user SSID” the current user SSID (if there is one) is overwritten by the new one.

To create a user SSID

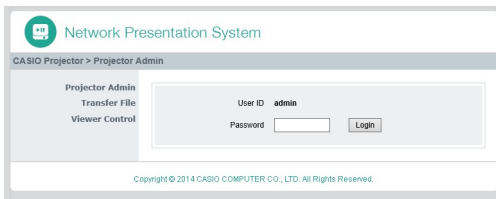
1. Perform one of the operations below to connect a computer to the projector via a LAN.
 - “To use a projector simple connection SSID to establish a wireless LAN connection and project” (page 12), steps 1 through 9
 - “To use a projector generic SSID to establish a wireless LAN connection and project” (page 15), steps 1 through 11
 - “To use a user SSID to establish a wireless LAN connection and project” (page 22), steps 1 through 11 (User SSID already created).
 - “To use a LAN cable to connect a computer directly to the projector” (page 36), steps 1 through 9
2. On the Network Connection window, click the function menu button and then click [Admin Screen] on the menu that appears.



- This starts up the computer's web browser and displays the projector's top page.



3. On the left pane, click “Projector Admin”. On the password input screen that appears, enter the password.



- The initial default password is “admin”.

4. Click the [Login] button.
 - If login proceeds normally, the “System Status” page will appear.

5. On the left pane, click “Network Settings”.

- This displays the “Network Settings” page.

- Input and settings required for user SSID creation are those surrounded by the red boundaries. You do not need to change other settings.
- For details about this page, see “To configure Network Settings page network settings” (page 60).

6. In the “SSID” box, input the character string you want to use as the user SSID.

- The final user SSID will be in the format: casioipj0<character string you input>
- You can enter up to 23 single-byte characters as the user SSID. Note that none of the following can be used as the text input portion of a user SSID: 001, 002, 003, 004, 101, 102, 103, or 104. This is because using these numbers would make the user SSID name the same as a simple SSID or generic SSID.

7. Select the encryption you want to use for wireless LAN communication.

- Click the [▼] button to the right of the “Security” box and then select the desired security protocol on the list that appears. The meaning of each option in the list is described below.

Security	Description
WPA-PSK AES	Performs communication encryption using WPA-PSK protocol. WPA (Wi-Fi Protected Access) is a security function for encrypting communication data.
WPA2-PSK AES	Performs communication encryption using WPA2-PSK protocol. TKIP and AES are encryption protocols. WPA2 is a new standard of WPA.
Disable	Turns off wireless LAN security, so communications are not encrypted.

8. Enter the passphrase.

- The passphrase entered in the “Passphrase/WEP Key Input” text box depends on the security protocol you selected in step 7, as described below.

Security	Input Character String
WPA-PSK AES	Enter the WPA-PSK or WPA2-PSK passphrase. Enter at least eight and up to 63 single-byte characters, or a hexadecimal value up to 64 digits long. <i>Example:</i>
WPA2-PSK AES	MyKey123 (Eight single-byte characters) 1111222233334444555566667777888899990000AAAABBBBCCCCDDDEEEFFFFFFF (64-digit hexadecimal value)
Disable	No input required.

- Each passphrase key character you input is indicated by an asterisk (*) in the applicable input box. If you want to see the actual characters you input, clear the “Hide characters” check box.
- The passphrase you input will be required when you use the user SSID to establish a wireless LAN connection between the projector and a computer. Make sure you do not forget the passphrase you input.

9. To create a user SSID in accordance with your settings in steps 6 through 8, click [Apply].

- This creates the user SSID and applies it to the projector.
- If the projector and computer are connected via wireless LAN, this terminates the wireless LAN connection between the projector and computer, and changes the projection screen to the LAN connection standby screen.

To use a user SSID to establish a wireless LAN connection and project

Projector Operation

- 1. Connect the wireless adapter to the projector (page 10) and then turn on the projector.**
 - The input source will automatically switch to either “Wireless” (XJ-A Series) or “Network” (XJ-M Series), and projection of the LAN connection standby screen will start.
 - If projection of the LAN connection standby screen does not start, press the [INPUT] key. On the “Input” dialog box that appears, use the [▼] and [▲] keys to select either “Wireless” (XJ-A Series) or “Network” (XJ-M Series) and then press the [ENTER] key.
- 2. Select the user SSID you created with the procedure under “To create a user SSID” (page 19).**

In this case:	Perform this operation:
Projector SSID was not changed after you performed the operation under “To create a user SSID” (page 19).	Advance directly to step 6.
Projector SSID was changed to a different one after you perform the operation under “To create a user SSID” (page 19).	Press the [MENU] key and then select the following: “Network Settings” → “Projector Wireless LAN Settings” → “SSID”. On the dialog box that appears, select the user SSID.

- 3. Press the [ESC] key twice to return to “Network Settings”.**
- 4. Use the [▼] key to select “Update Network Settings” and then press the [ENTER] key.**
 - This will display a confirmation dialog box asking if you want to update network settings.
- 5. Press the [▲] key to select “Yes”, and then press the [ENTER] key.**
 - This applies the SSID change to the projector and closes the dialog box. Wait until the LAN connection standby screen starts to be projected again.

6. Start up Network Connection.

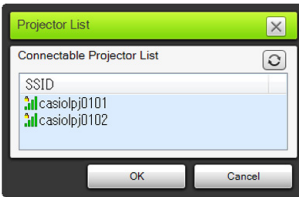
- The Network Connection window will appear with the message “Connecting”.



- If your computer is running Windows 7, 8 or 8.1 and the “Set Network Location” dialog box appears, click [Cancel] to close the dialog box.
- One of the dialog boxes shown below will appear as soon as Network Connection finds the projector to connect with.

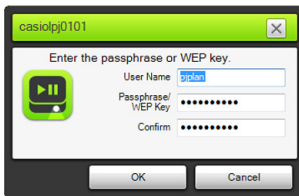
If this dialog box appears:	It indicates this status:	Advance to this step:
“Projector List”	Multiple connectable projectors were detected.	Step 7
“Enter the passphrase or WEP key.”	The user SSID “Security” setting is something other than “Disable” and only one connectable projector was found.	Step 8
“Enter the login code.”	The user SSID “Security” setting is “Disable” and only one connectable projector was found.	Step 10

7. Click the SSID of the projector you want to connect with, and then click [OK].



- If the “Enter the passphrase or WEP key.” dialog box appears, go to step 8. If the “Enter the login code.” dialog box appears, go to step 10.

8. Enter the passphrase.



- Enter the user SSID passphrase (the character string you input in step 8 under “To create a user SSID”) into both the “Passphrase/WEP Key Input” and the “Confirm” boxes.

9. When everything is the way you want, click [OK].

- This displays the dialog box shown below.



10. In the “Login Code” box, enter the four-digit number shown in the upper left corner of the LAN connection standby screen that is being projected.

11. When everything is the way you want, click [OK].

- While the projector is connected to a computer over a wireless LAN, a Network Connection window like the one shown below will be displayed on the computer screen. The computer screen image (main screen) will be projected.



- For details about Network Connection window operations, see “Using Network Connection” (page 39).

12. To terminate the wireless LAN connection and discontinue computer screen projection, click the close button (X) in the upper right corner of the Network Connection window.

- This closes the Network Connection window and returns the projected image to the LAN connection standby screen.

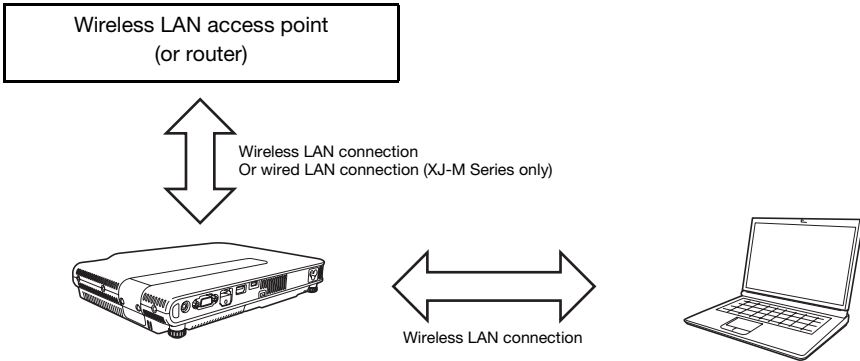


Note

- After you perform the above operation, Network Connection will remember the passphrase used for the last connection. Because of this, you will not need to input the passphrase again if you re-connect the same computer to the projector (as long as the SSID has not been changed).
- In the case of a wireless LAN connection using a user SSID, settings can be configured to eliminate the need for login code input. For information about how to configure settings, see “To configure Control Panel page network settings” (page 59).

Connecting the Projector to an Outside Network without Terminating a Direct Wireless LAN Connection with a Computer

While there is a direct wireless LAN connection between the projector and a computer, the projector can connect with a wireless access point that is connected to an outside network (Internet or Intranet), without terminating the connection with the computer.



Important!

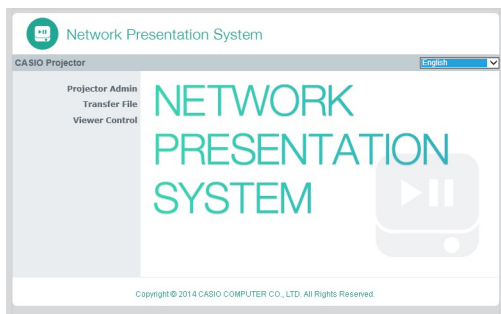
- This type of connection makes it possible for the computer to use the network (Internet or Intranet) service connected to by the wireless LAN access point or router. The network environment that can be connected to from the computer depends on the wireless LAN access point or router.
- This type of connection assumes that a DHCP server is running on the network to which the wireless LAN access point or router belongs.

To connect the projector to a wireless LAN access point without terminating a direct wireless LAN connection with a computer

1. Perform one of the operations below to connect a computer to the projector via a wireless LAN.
 - “To use a projector simple connection SSID to establish a wireless LAN connection and project” (page 12), steps 1 through 9
 - “To use a projector generic SSID to establish a wireless LAN connection and project” (page 15), steps 1 through 11
 - “To use a user SSID to establish a wireless LAN connection and project” (page 22), steps 1 through 11 (After a user SSID has been created.)
2. On the Network Connection window, click the function menu button and then click [Admin Screen] on the menu that appears.



- This starts up the computer's web browser and displays the projector's top page.



3. On the left pane, click “Projector Admin”. On the password input screen that appears, enter the password.
 - The initial default password is “admin”.
4. Click the [Login] button.
 - If login proceeds normally, the “System Status” page will appear.

5. On the left pane, click “Network Settings”.

- This displays the “Network Settings” page.

- Input and settings required here are those surrounded by the red boundaries. You do not need to change other settings.
- For details about this page, see “To configure Network Settings page network settings” (page 60).

6. If the “Obtain an IP address automatically” button looks like , click to change it to .

7. If the “Auto” button in the “DHCP Settings” area looks like , click to change it to .

8. Configure settings for connection to a wireless LAN access point from the projector.

- (1) If the “Enable” button in the “External Access Point” area looks like , click to change it to .
- (2) Click [Scan Access Point].
 - “Select an access point.” is displayed in the “External Access Point SSID” box.
- (3) Click the [▼] button to the right of the “External Access Point SSID” box and then select the SSID of the access point you want to connect with on the list that appears.
 - The list that appears when you click the [▼] button shows access points whose signals are detected by the projector at that time, and up to eight previously connected access points.
 - If you want to input an SSID manually, select the “Enter the key.” option on the list. Next, enter the desired SSID in the “External Access Point SSID” box.
- (4) In the “Key” box, input the passphrase or WEP key of the access point being connected with.
 - You do not need to input anything if the access point you are using does not require passphrase or WEP key input.
 - Each passphrase or WEP key character you input is indicated by an asterisk (*) in the applicable input box. If you want to see the actual characters you input, clear the “Hide characters” check box.
- (5) To save your connection settings, click [Apply].
 - If the passphrase or WEP key is correct it should normally take anywhere from one minute to a few minutes to establish a connection with the access point.

9. Use the remote controller that comes with the projector to check if the projector is connected to the wireless LAN access point.

(1) Press the [MENU] key, and then select “Network Settings” → “Wireless LAN Info”.

(2) On the “Wireless LAN Info” dialog box that appears, check “External AP Connection Status”.

- If “Connected” is shown, it means that the projector is connected to the wireless LAN access point. If “Disconnected” is shown, perform this procedure from step 1 again.
- When the external access point is operating as a DHCP server, terminating the connection will cause the projector’s IP address to be changed to a value decided by the external access point.



Note

- Once you configure the above settings and connect the projector to a wireless LAN access point, the projector will automatically connect with the same wireless LAN access point whenever you switch its input source to either “Wireless” (XJ-A Series) or “Network” (XJ-M Series). This is true as long as the projector is within the connection range of the wireless LAN access point, and as long as the settings of the wireless LAN access point and projector settings have not been changed.

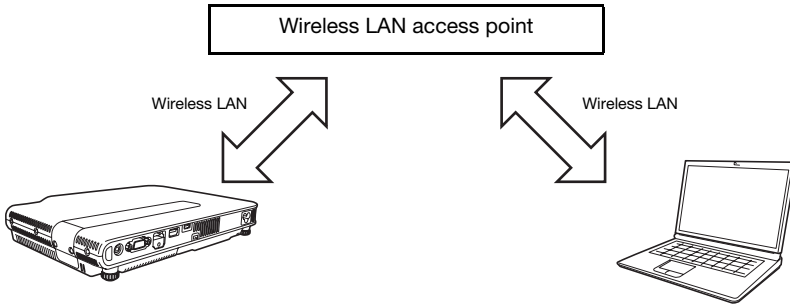
To establish a wired LAN connection between the projector and a router while maintaining a direct wireless connection between the projector and a computer (XJ-M Series only)

- 1. Perform steps 1 through 7 under “To connect the projector to a wireless LAN access point without terminating a direct wireless LAN connection with a computer” (page 26).**
- 2. In the upper right corner of the “Network Settings” page, click “Logout” to log out of Projector Admin.**
- 3. Use a LAN cable to connect the projector to the router.**

Establishing a Connection between the Projector and Computer Via a Wireless LAN Access Point

Connection Overview

A LAN connection can be established between the projector and computer by connecting both of them to an existing wireless LAN access point inside of a company, etc.



Important!

- This type of connection makes it possible for the computer to use the network (Internet or Intranet) service connected to by the wireless LAN access point. The network environment that can be connected to from the computer depends on the wireless LAN access point.
- This type of connection assumes that the wireless LAN access point functions as a DHCP server or that a DHCP server is running on the network to which the wireless LAN access point belongs.

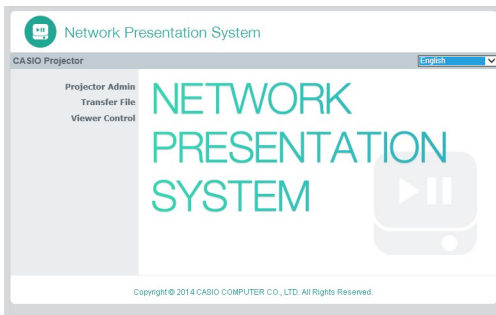
Connection Procedures

To connect the projector to a wireless LAN access point

1. Perform one of the operations below to connect a computer to the projector via a LAN.
 - “To use a projector simple connection SSID to establish a wireless LAN connection and project” (page 12), steps 1 through 9
 - “To use a projector generic SSID to establish a wireless LAN connection and project” (page 15), steps 1 through 11
 - “To use a user SSID to establish a wireless LAN connection and project” (page 22), steps 1 through 11 (User SSID already created).
 - “To use a LAN cable to connect a computer directly to the projector” (page 36), steps 1 through 9
2. On the Network Connection window, click the function menu button and then click [Admin Screen] on the menu that appears.



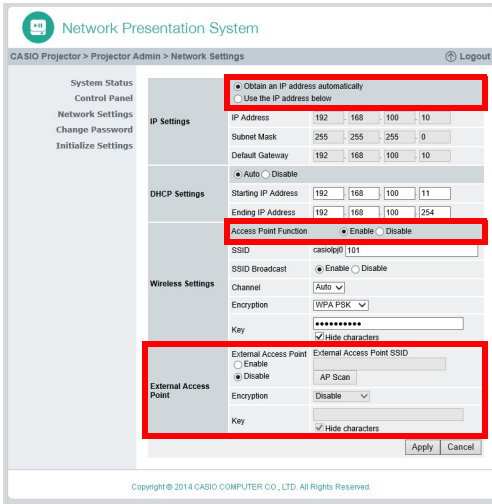
- This starts up the computer's web browser and displays the projector's top page.



3. On the left pane, click “Projector Admin”. On the password input screen that appears, enter the password.
 - The initial default password is “admin”.
4. Click the [Login] button.
 - If login proceeds normally, the “System Status” page will appear.

5. On the left pane, click “Network Settings”.

- This displays the “Network Settings” page.





- Input and settings required here are those surrounded by the red boundaries. You do not need to change other settings.
- For details about this page, see “To configure Network Settings page network settings” (page 60).

6. If the “Obtain an IP address automatically” button looks like , click to change it to .

7. If the “Disable” button in the “Access Point Function” area looks like , click to change it to .

8. Configure settings for connection to a wireless LAN access point from the projector.

- (1) If the “Enable” button in the “External Access Point” area looks like , click to change it to .
- (2) Click [Scan Access Point].
 - “Select an access point.” is displayed in the “External Access Point SSID” box.
- (3) Click the [▼] button to the right of the “External Access Point SSID” box and then select the SSID of the access point you want to connect with on the list that appears.
 - The list that appears when you click the [▼] button shows access points whose signals are detected by the projector at that time, and up to eight previously connected access points.
 - If you want to input an SSID manually, select the “Enter the key.” option on the list. Next, enter the desired SSID in the “External Access Point SSID” box.
- (4) In the “Key” box, input the passphrase or WEP key of the access point being connected with.
 - You do not need to input anything if the access point you are using does not require passphrase or WEP key input.
 - Each passphrase or WEP key character you input is indicated by an asterisk (*) in the applicable input box. If you want to see the actual characters you input, clear the “Hide characters” check box.
- (5) To save your connection settings, click [Apply].
 - At this point, the “Access Point Function” setting (step 7, above) automatically changes to “Disable”. If the projector is connected to a computer via wireless LAN for the purpose of configuring the above settings, this will terminate the connection.
 - If the passphrase or WEP key is correct it should normally take anywhere from one minute or a few minutes to establish a connection with the access point.

9. Use the remote controller that comes with the projector to check if the projector is connected to the wireless LAN access point.

- (1) Press the [MENU] key, and then select “Network Settings” → “Wireless LAN Info”.
- (2) On the “Wireless LAN Info” dialog box that appears, check “External AP Connection Status”.
 - If “Connected” is shown, it means that the projector is connected to the wireless LAN access point. If “Disconnected” is shown, perform this procedure from step 1 again.
 - When the external access point is operating as a DHCP server, terminating the connection will cause the projector’s IP address to be changed to a value decided by the external access point.



Note

- Once you configure the above settings and connect the projector to a wireless LAN access point, the projector will automatically connect with the same wireless LAN access point whenever you switch its input source to either “Wireless” (XJ-A Series) or “Network” (XJ-M Series). This is true as long as the projector is within the connection range of the wireless LAN access point, and as long as the settings of the wireless LAN access point and projector settings have not been changed.

To establish a connection between the projector and computer and project via a wireless LAN access point



Important!

- The procedure below assumes the conditions described below.
 - The computer is already connected to the wireless LAN access point.
It makes no difference whether the computer is connected by wireless LAN (Wi-Fi) or wired LAN (using a LAN cable). If the computer is connected by wired LAN connection, make sure the computer's wireless LAN function is disabled.
 - Projector settings have already been configured using the procedure under "To connect the projector to a wireless LAN access point" (page 30), and wireless LAN access point and/or projector settings have not been changed since then.
 - The projector is within range supported by the wireless LAN access point.

Projector Operation

1. Connect the wireless adapter to the projector (page 10) and then turn on the projector.

- The input source will automatically switch to either "Wireless" (XJ-A Series) or "Network" (XJ-M Series), and projection of the LAN connection standby screen will start.
- If projection of the LAN connection standby screen does not start, press the [INPUT] key. On the "Input" dialog box that appears, use the [▼] and [▲] keys to select either "Wireless" (XJ-A Series) or "Network" (XJ-M Series) and then press the [ENTER] key.

Computer Operation

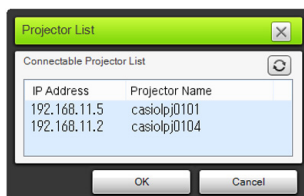
2. Start up Network Connection.

- The Network Connection window will appear with the message "Connecting".
- If your computer is running Windows 7, 8 or 8.1 and the "Set Network Location" dialog box appears, click [Cancel] to close the dialog box.
- One of the dialog boxes shown below will appear as soon as Network Connection finds the projector to connect with.

If this dialog box appears:	It indicates this status:	Advance to this step:
"Projector List"	Multiple connectable projectors were detected on the network.	Step 4
"Enter the login code."	One connectable projector was detected on the network.	Step 5

3. Click the IP address of the projector you want to connect with, and then click [OK].

- For the projector's IP address, check "Server IP" in the lower left corner of the projection screen (LAN connection standby screen).



4. On the “Enter the login code.” dialog box that appears, enter the login code.



- In the “Login Code” box, enter the four-digit number shown in the upper left corner of the LAN connection standby screen that is being projected.

5. When everything is the way you want, click [OK].

- While the projector is connected to a computer over a wireless LAN, a Network Connection window like the one shown below will be displayed on the computer screen. The computer screen image (main screen) will be projected.



- For details about Network Connection window operations, see “Using Network Connection” (page 39).

6. To terminate the wireless LAN connection and discontinue computer screen projection, click the close button (X) in the upper right corner of the Network Connection window.

- This closes the Network Connection window and returns the projected image to the LAN connection standby screen.



Note

- When using the above type of connection, settings can be configured to eliminate the need for login code input. For information about how to configure settings, see “To configure Control Panel page network settings” (page 59).

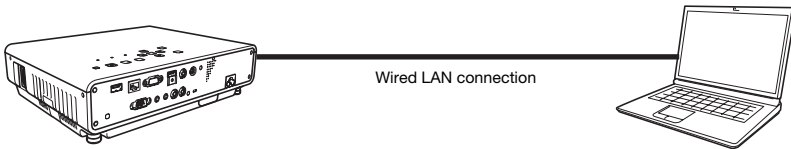
Connecting the Projector to a Computer via a Wired LAN (XJ-M Series Only)

Wired LAN Connection Overview

The method you should use to connect the projector to a computer over a wired LAN depends on whether or not the computer will also be connected to an outside network at the same time.

Wired LAN connection when it is not necessary to connect the computer to an outside network

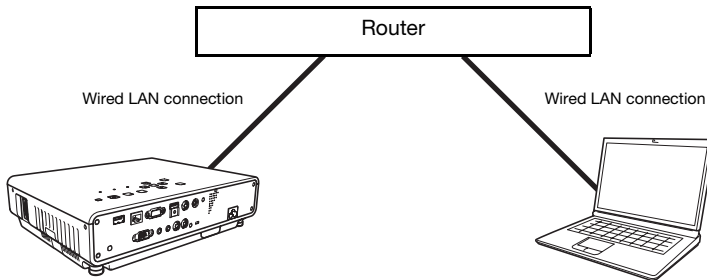
Use a LAN cable to connect the projector and computer, and configure IP address settings for both.



For information about how to do this, see “To use a LAN cable to connect a computer directly to the projector” (page 36).

Wired LAN connection when you also want to connect the computer to an outside network

Use LAN cables to connect the projector and computer to the same router. In this configuration, the computer can use the network (Internet or intranet) service connected to by the router. The network environment that can be connected to from the computer depends on the router.



For information about how to do this, see “To establish a wired LAN connection between the projector and a computer via a router” (page 38).



Note

- The Network Connection application is not required for wired LAN connection operations. Network Connection is used when projecting computer screen contents after a wired LAN connection is established.

Wired LAN Connection Procedures

To use a LAN cable to connect a computer directly to the projector

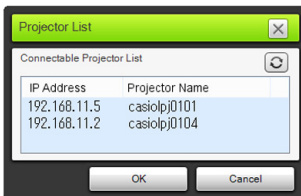
1. Connect the computer to the projector with the LAN cable.

Projector Operation

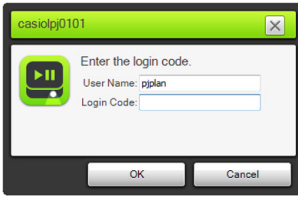
2. Press the [INPUT] key. This will display the “Input” dialog box.
3. Use the [▼] and [▲] keys to select “Network” and then press the [ENTER] key.
4. Check the IP address (“Server IP”) in the lower right corner of the LAN connection standby screen.
 - Here, we will use a projector IP address of 192.168.100.10 (projector initial default setting).

Computer Operation

5. Change the IP address of the computer to 192.168.100.XXX (XXX is a value from 1 to 9 or 11 to 254).
 - The steps up to this point are to establish a LAN connection between the projector and computer. The steps from here are for projecting the computer screen.
6. Start up Network Connection.
 - The Network Connection window will appear with the message “Connecting”.
 - If your computer is running Windows 7, 8 or 8.1 and the “Set Network Location” dialog box appears, click [Cancel] to close the dialog box.
 - A “Projector List” dialog box will appear as soon as Network Connection finds a projector to connect to.
7. Click the IP address of the projector you want to connect with, and then click [OK].
 - For the projector’s IP address, check “Server IP” in the lower left corner of the projection screen (LAN connection standby screen).



8. On the “Enter the login code.” dialog box that appears, input the required login code.



- In the “Login Code” box, input the four-digit number shown in the upper left corner of the LAN connection standby screen that is being projected.

9. When everything is the way you want, click [OK].

- This will cause the Network Connection window to change as shown below, and projection of the computer screen image (main window) will start.



- For details about Network Connection window operations, see to “Using Network Connection” (page 39).

10. To discontinue computer screen projection, click the close button (✕) in the upper right corner of the Network Connection window.

- This closes the Network Connection window and returns the projected image to the LAN connection standby screen.



Note

- When using the above type of connection, settings can be configured to eliminate the need for login code input. For information about how to configure such settings see “To configure Control Panel page network settings” (page 59).

To establish a wired LAN connection between the projector and a computer via a router



Note

- The procedure below assumes that a DHCP server is running on the network to which the router belongs, and that there is a LAN connection between the computer and router.

Projector Operation

- 1. Use a LAN cable to connect the projector to the router to which the computer is connected via the LAN**
- 2. On the projector, select “Auto” for “IP Settings”.**
 - (1) Perform the following steps to display the IP Settings dialog box: [MENU] key → “Network Settings” → “Projector Wired LAN Settings”.
 - (2) Press the [◀] key to select “Auto” for “IP Settings”.
 - (3) Press the [ESC] key to return to “Network Settings”.
 - (4) Select “Update Network Settings” and then press the [ENTER] key.
 - (5) In response to the network setting update dialog box that appears, press the [▲] key to select “Yes” and then press the [ENTER] key.

Computer Operation

- 3. Perform the operation from step 6 under “To use a LAN cable to connect a computer directly to the projector” (page 36).**

Using Network Connection

Network Connection is an application you can use to establish a LAN connection between a projector and a computer, and to send display images, movies, and audio from a connected computer to the projector.

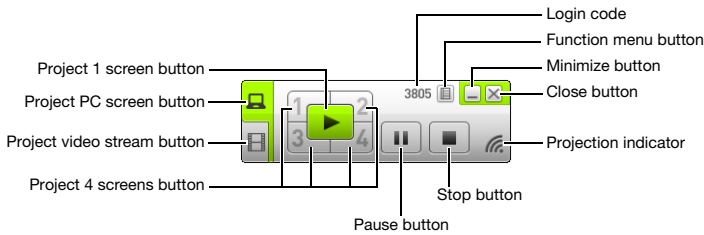


Important!

- The explanations in this section assume there is already a LAN connection between the projector and computer, and that the computer screen contents are being projected. Before performing the procedures in this section, you should use the procedure under “Projecting Computer Screen Contents Over a LAN Connection” (page 9) to establish a LAN connection between the projector and computer.

Network Connection Window










The Network Connection window shown below is displayed while there is a LAN connection between the projector and computer.



Network Connection Operations

Network Connection Button Operations

While there is a LAN connection between the projector and a computer, you can use the buttons on the Network Connection window to perform the operations described below.

To do this:	Click this button:
Project a single computer screen that fills the entire projection screen images (project 1 screen)	 (project 1 screen)
Divide the projection screen into four parts and project four computer screens (project 4 screens)	One of the following buttons*:  ,  ,  , 
Freeze the computer screen that is currently being projected	 (pause)
Project a movie without displaying it on the computer (project video stream)	 (project video stream) For more information, see "Projecting a Video Stream" on page 43.
Stop computer screen projection	 (stop)
Exit Network Connection	 (close)

* Clicking a button will project the computer screen image in the corresponding location: (1) Upper left, (2) Upper right, (3) Lower left, (4) Lower right.



Network Connection Function Menu Operations

While there is a LAN connection between the projector and a computer, you can use the items on the Network Connection function menu (which appears when you click the function menu button) to perform the operations described below.

To do this:	Select this function menu item:	Refer to:
Prioritize display speed over projection screen image quality	[Projection Setting] → [High-speed]	-
Prioritize projection screen image quality over display speed	[Projection Setting] → [High-resolution]	-
Output computer audio from the projector speaker*1	[Audio Out]	"Outputting Computer Audio from the Projector Speaker" (page 42)
Switch from main screen projection to extended screen projection*2	[Select the Projection Screen] → [Extended Screen]	-
Switch from extended screen projection to main screen projection	[Select the Projection Screen] → [Main Screen]	
Use a smart device for remote control of a computer that is running Network Connection	[PC Remote]	"Remotely Controlling a Computer from a Smart Device" (page 44)
Configure projector network settings	[Admin Screen]	"Using the Projector Admin Pages" (page 52)
Remotely control the projector over a LAN connection	[Admin Screen]	"Remotely controlling the Projector Over a LAN Connection" (page 64)
Upload a file to projector internal memory	[Admin Screen]	"Uploading a File to Projector Internal Memory" (page 67)
Change the wireless LAN connection to another projector	[Server Search]	"To terminate the current wireless LAN connection and re-connect" (page 45)
Create a copy of Network Connection on a USB flash drive	[Token Wizard]	"Using the Token Wizard" (page 73)
Delete connection information (passphrase) stored by Network Connection	[Initialize]	"To delete connection information (passphrase) stored by Network Connection" (page 45)
Show the IP address and login code of the projector connected via LAN	[Info]	-
Display Network Connection version information	[About]	-
Exit Network Connection	[Exit]	-

*1 In the case of Windows XP, which does not support audio level mixer functions, a driver must be installed to enable these functions. See "Add-on Driver Software for Windows" below.

*2 With Windows XP and Windows Vista, installation of driver software is required to enable these functions. See "Add-on Driver Software for Windows" below.

Add-on Driver Software for Windows

With Windows, use of some parts of the Network Connection requires installation of the driver software shown in the table below. For information about how to obtain this software, go to the CASIO website (<http://www.casio-intl.com/support/>).

To use this function:	Install this driver software:
Audio output function	VAC driver (for Windows XP version that does not support audio level mixer functions)
Extended screen output function	VDD driver (for Windows XP and Windows Vista)

Outputting Computer Audio from the Projector Speaker

You can use Network Connection to output computer audio from the projector speaker while a computer screen is being projected over a LAN connection.

- To output computer audio from the projector speaker, select [Audio Out] on the Network Connection function menu so there is check mark next to it.
Enabling projector speaker output will disable audio output from the computer speaker(s).
- To disable projector speaker audio output and re-enable output from the computer speaker(s), select [Audio Out] on the function menu again to remove the check mark.



Note

- The function menu [Audio Out] item is unchecked (disabled) whenever you start up Network Connection.

Projecting a Video Stream

You can use Network Connection to play a movie and output the playback image to the projector for projection. Only the movie's video stream is displayed on the projection screen. You can leave the normal desktop and Network Connection window (which are not projected) on the computer screen.

Supported Playback Files

AVI: 20 Mbps maximum 720/30P (MJPEG video, ADPCM audio)

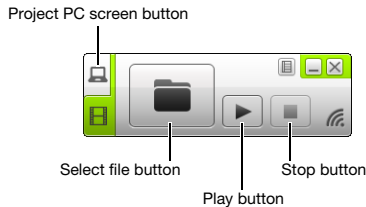
MOV: 20 Mbps maximum 1080/30P (H.264 video, ADPCM audio or AAC audio)

MP4: 20 Mbps maximum 1080/30P (H.264 video, AAC audio)

To project a video stream

1. On the Network Connection window, click (project video stream).

- This will cause the appearance of the Network Connection window to change as shown below.



- If the computer screen is being projected, pressing the above button returns the projection screen to the LAN connection standby screen. If projection is being performed from another computer, the projection screen will not change.

2. Click (select file).

3. Use the select file dialog box that appears to select the movie file you want to play and then click [Open].


- This starts playback of the file you selected and displays a full-screen view of the movie on the projection screen.

4. To stop movie playback, click (stop).

5. To return to normal computer screen projection, click (project PC screen).



Note

- After stopping playback in step 4 of the above procedure, you can restart playback from the beginning of the file (movie) by clicking  (play).
- Video stream projection is always performed in full-screen view. In this case, the projection screen cannot be divided into four parts as when projecting computer screen images.
- When projecting a video stream the audio of the movie is always output by the projector.

Remotely Controlling a Computer from a Smart Device

This section explains how to use a smart device for remote control of a computer running Network Connection.



Important!

- To perform remote control operation described here, your smart device will need to have C-Assist (page 75) installed on it.

To start PC remote

1. Perform one of the operations below to project computer screen contents via a wireless LAN.

- “To use a projector simple connection SSID to establish a wireless LAN connection and project” (page 12), steps 1 through 9
- “To use a projector generic SSID to establish a wireless LAN connection and project” (page 15), steps 1 through 11
- “To use a user SSID to establish a wireless LAN connection and project” (page 22), steps 1 through 11 (User SSID already created.)

2. On the smart device, start up C-Assist and then perform the steps below.

- (1) Log in to the projector.
- (2) Enter PC Remote standby.

3. On the Network Connection window, click the function menu button and then click [PC Remote] on the menu that appears so there is a check mark next to it.

- This will cause an image of the computer screen to appear on the smart device’s touch screen.
- The above indicates that you can use the smart device’s touch screen to perform computer mouse operations. You can also use the smart device’s on-screen keyboard to input and edit data on the computer.

4. Control the computer from the smart device as required.

To exit PC Remote

On the Network Connection window, click the function menu button and then click [PC Remote] on the menu that appears to clear the check mark next to it.

Other Network Connection Operations

To terminate the current wireless LAN connection and re-connect

- 1. On the Network Connection function menu, select [Server Search].**
 - This terminates the current wireless LAN connection, and changes the projection screen to the LAN connection standby screen.
- 2. Perform one of the operations below.**
 - “To use a projector simple connection SSID to establish a wireless LAN connection and project” (page 12)
 - “To use a projector generic SSID to establish a wireless LAN connection and project” (page 15)
 - “To use a user SSID to establish a wireless LAN connection and project” (page 22) (After a user SSID has been created.)

To delete connection information (passphrase) stored by Network Connection

- 1. On the Network Connection function menu, select [Initialize].**
- 2. On the initialize confirmation dialog box that appears, click [OK] to initialize or [Cancel] to cancel.**

Projector Network Settings

There are two types of projector network settings: basic settings that can be configured by the projector alone, and more detailed settings that can be configured by using a computer connected to the projector via a LAN connection to access the Projector Admin pages.

- For information about basic network settings that can be configured on the projector alone, see “Using the Projector Setup Menu” (below).
- For information about using a computer web browser to configure detailed network settings, see “Using the Projector Admin Pages” (page 52).

Using the Projector Setup Menu

You can use the “Network Settings” main menu, which is included in the projector setup menu, to display information about and configure settings for the projector and external device LAN connection.

The table below shows the menu items included in the “Network Settings” main menu.

Menu Item	Description	Refer to:
Wired LAN info (XJ-M Series only)	Shows information about the current wired LAN connection status (IP address, DHCP setting, etc.)	“To display wired LAN information (XJ-M Series only)” (page 47)
Wireless LAN Info	Shows information about the current wireless LAN connection (IP address, DHCP setting, security settings, status of connection with external access point, etc.)	“To display wireless LAN information” (page 48)
Projector Wired LAN Settings (XJ-M Series only)	Configure the IP address setting.	“To change the IP settings” (page 50)
Projector Wireless LAN Settings	Displays a dialog box for selecting the SSID and setting the IP address for use when the projector is used as a wireless LAN access point.	“To change the SSID” (page 49) “To change the IP settings” (page 50)
Remote On* (XJ-M Series only)	Specifies whether the projector can be turned on via LAN while the projector is in standby (projector off with power being supplied).	–
PJLink Authentication (XJ-M Series only)	Enables and disables PJLink connection authentication.	–
Update Network Settings	Reflects on the projector changes made to “Projector Wireless LAN Settings”.	–
Initialize Network Settings	Returns network settings to their initial factory defaults.	“To initialize network settings” (page 51)

* Projector standby power consumption depends on whether or not Remote On is enabled. For information about power consumption in each standby state, see the “Setup Guide” that comes with the projector.

You can perform the following procedures on the projector itself or using the remote controller that comes with the projector.

To display wired LAN information (XJ-M Series only)

1. Press the [MENU] key to display the setup menu.
2. Use the [▼] key to select “Network Settings” and then press the [ENTER] key.
3. Use the [▼] key to select “Wired LAN info” and then press the [ENTER] key.
 - This will display the Wired LAN info dialog box. The table below explains the information that appears on the dialog box.

Item Name	Description
Projector name	Blank (no name specified) under initial default settings. The name can be changed using the procedure under “To configure Control Panel page network settings” (page 59).
MAC Address	Fixed wired LAN MAC address assigned to each projector
IP Address	IP address currently assigned to the projector
DHCP	Shows the current projector DHCP server function status (“Auto” or “Disable”).

4. To close the dialog box and exit the setup menu, press the [MENU] key.

To display wireless LAN information

1. Press the [MENU] key to display the setup menu.
2. Use the [▼] key to select “Network Settings” and then press the [ENTER] key.
3. Use the [▼] key to select “Wireless LAN Info” and then press the [ENTER] key.
 - This displays the “Wireless LAN Info” dialog box. The table below explains the information that appears on the dialog box.

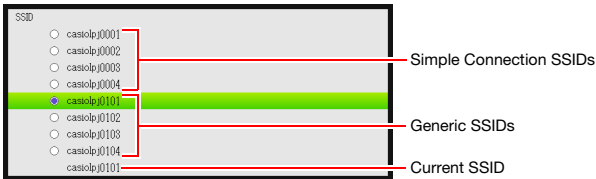
Item Name	Description
SSID	Shows the projector’s current SSID (which is used for wireless LAN connection with an external device).
Wireless MAC Address	Fixed wireless LAN MAC address assigned to each wireless adapter.
IP Address	IP address currently assigned to the projector.
DHCP	Shows the current projector DHCP sever status (“Auto” or “Disable”).
Security Settings	Shows the encryption system being used by the projector’s current SSID. For information about the encryption system, see step 7 under “To create a user SSID” (page 19).
External AP SSID	Appears when “Enable” is specified for “External Access Point” on the “Network Settings” page (page 30). When the projector is connected to an external wireless LAN access point, shows that access point’s SSID. When not connected, shows “No connection”.
External AP Connection Status	Appears when “Enable” is specified for “External Access Point” on the “Network Settings” page (page 30). When the projector is connected to an external wireless LAN access point, shows “Connected”. When not connected, shows “Disconnected”.


4. To close the dialog box and exit the setup menu, press the [MENU] key.

To change the SSID

1. Press the [MENU] key to display the setup menu.
2. Use the [▼] key to select “Network Settings” and then press the [ENTER] key.
3. Use the [▼] key to select “Projector Wireless LAN Settings” and then press the [ENTER] key.
4. Make sure that “SSID” is selected and then press the [ENTER] key.

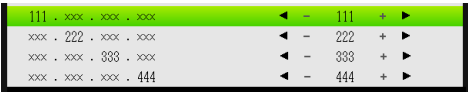
- This displays a list of selectable SSIDs.



- If there is a previously created user SSID, it also will appear in the list.
5. Use the [▲] and [▼] keys to select the SSID you want and then press the [ENTER] key.
 - The button to the left of the currently selected SSID will become .
 6. Press the [ESC] key twice to return to “Network Settings”.
 7. Use the [▼] key to select “Update Network Settings” and then press the [ENTER] key.
 - This will display a confirmation dialog box asking if you want to update network settings.
 8. Press the [▲] key to select “Yes”, and then press the [ENTER] key.
 - This applies the SSID change to the projector and closes the dialog box.

To change the IP settings

1. Press the [MENU] key to display the setup menu.
2. Use the [▼] key to select “Network Settings” and then press the [ENTER] key.
3. Use the [▼] key to select “Projector Wireless LAN Settings” and then press the [ENTER] key.
4. Use the [▼] key to select “IP Settings” and then press the [ENTER] key.
 - With an XJ-M Series projector you can perform the step below in place of steps 3 and 4 above, if you want.
Use the [▼] key to select “Projector Wired LAN Settings” and then press the [ENTER] key.
5. On the “IP Settings” dialog box that appears, configure the settings described in the table below.

To do this:	Perform this operation:
Specify auto acquisition of an IP address	Select “Auto” for “IP Settings”.
Specify the IP address manually	Specify “Manual” for “IP Settings” and input an IP address manually (see below).
Input an IP address	<p>(1) Use the [▼] key to select “IP Address” and then press the [ENTER] key.</p> <ul style="list-style-type: none"> ● This displays the “Input IP Address” dialog box.  <p>(2) Use the [◀] and [▶] keys to specify the first octet (three digits) of the IP address. After the setting is the way you want press the [▼] key.</p> <p>(3) Repeat step (2) to specify octets two through four.</p> <ul style="list-style-type: none"> ● A value within the following ranges can be specified for each octet: 1st: 1 to 223; 2nd: 0 to 255; 3rd: 0 to 255; 4th: 1 to 254. Specifying a value outside the above ranges will cause the numbers of the value to be dimmed. If you advance to step (4) while there is a dimmed octet number will return the IP address setting to what it was originally (before you started input). <p>(4) When the IP address is the one you want, press the [ESC] key.</p>

6. What you should do next to return to “Network Settings” depends on whether you started this operation from “Projector Wireless LAN Settings” or “Projector Wired LAN Settings”.
 - Projector Wireless LAN Settings: Press [ESC] twice.
 - Projector Wired LAN Settings: Press [ESC] once.
7. Use the [▼] key to select “Update Network Settings” and then press the [ENTER] key.
 - This will display a confirmation dialog box asking if you want to update network settings.

8. Press the [▲] key to select “Yes”, and then press the [ENTER] key.

- This applies the IP setting change to the projector and closes the dialog box.



Note

- Using the above operation to select “Manual” for “IP Settings” will cause the DHCP settings (page 60) to change to “Auto”. Selecting “Auto” for the DHCP settings causes the DHCP start address and end address to be set automatically as described below.

Example: When 192.168.100.20 is input for the IP address

Start address:

192.168.100.21 (The IP address you input with 1 added to the 4th octet)

End address:

192.168.100.254 (The IP address you input with the 4th octet changed to 254)

If the 4th octet of the IP address you input is 253 or 254, the 4th octets of the start address and end address will both be 254.

To initialize network settings

1. Press the [MENU] key to display the setup menu.

2. Use the [▼] key to select “Network Settings” and then press the [ENTER] key.

3. Use the [▼] key to select “Initialize Network Settings” and then press the [ENTER] key.

- This will display a confirmation dialog box asking if you want to initialize network settings.

4. Press the [▲] key to select “Yes”, and then press the [ENTER] key.

- This initializes network settings and closes the dialog box.

Using the Projector Admin Pages

You can use a computer web browser to access the Projector Admin pages described below to view information and settings, and to perform various operations.

Use this page:	To do this:	Refer to:
System Status	View the projector's firmware version and network information (IP address, etc.)	"To display the system status" (page 58)
Control Panel	Configure the network settings below. Projector name, use/do not use a login code, show/hide user name setting, enabled/disable IEEE 802.11n, channel width setting	"To configure Control Panel page network settings" (page 59)
	Operate the projector over a LAN.	"Remotely controlling the Projector Over a LAN Connection" (page 64)
Network Settings	Configure the network settings below. IP address setting, enable/disable DHCP server function, wireless LAN connection settings (enable/disable Access Point Function, SSID settings, security settings, etc.), settings for connection to an external access point	"To configure Network Settings page network settings" (page 60)
Change Passwords	Change the password used when logging into Projector Admin.	"To change the password for logging in to the Projector Admin pages" (page 62)
Initialize Settings	Return all Projector Admin settings to their initial factory defaults.	"To initialize all settings on the Projector Admin pages" (page 63)
Crestron Control (XJ-M Series only)	For input of the information required for the projector to connect to a Crestron controller.	"To input information for connecting to a Crestron controller (XJ-M Series Only)" (page 63)

Logging In to the Projector Admin Pages over a Wireless LAN Connection

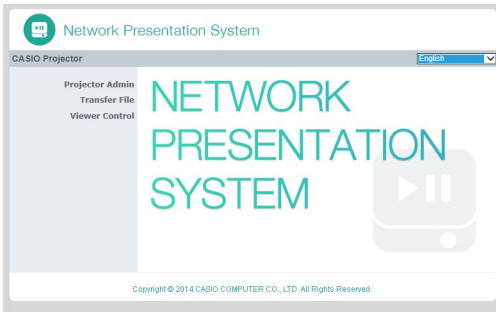
If there is a wireless LAN connection between the projector and a computer, you can perform a Network Connection operation on the computer to log in to the Projector Admin pages.

To log in to the Projector Admin pages over a wireless LAN connection

- 1. Perform one of the operations below to connect a computer to the projector via a wireless LAN.**
 - “To use a projector simple connection SSID to establish a wireless LAN connection and project” (page 12), steps 1 through 9
 - “To use a projector generic SSID to establish a wireless LAN connection and project” (page 15), steps 1 through 11
 - “To use a user SSID to establish a wireless LAN connection and project” (page 22), steps 1 through 11 (User SSID already created).
- 2. On the Network Connection window, click the function menu button and then click [Admin Screen] on the menu that appears.**



- This starts up the computer's web browser and displays the projector's top page.



- 3. On the left pane, click “Projector Admin”. On the password input screen that appears, enter the password.**
 - The initial default password is “admin”.
- 4. Click the [Login] button.**
 - If login proceeds normally, the “System Status” page will appear.

Logging In to the Projector Admin Pages Over a Wired LAN Connection (XJ-M Series Only)

With an XJ-M Series projector, you can log in to the Projector Admin pages over a wired LAN without using Network Connection.

To log in to the Projector Admin pages over a wired LAN connection

- 1. Perform one of the operations below to connect a computer to the projector over a wired LAN connection.**
 - “To change the computer IP address based on the projector’s IP address and connect by wired LAN” (page 55)
 - “To change the projector’s IP address based on the computer’s IP address and connect by wired LAN” (page 56)
 - “To establish a wired LAN connection between the projector and a computer via a router” (page 38)

Projector Operation

- 2. Press the [INPUT] key. This will display the “Input” dialog box.**
- 3. Use the [▼] and [▲] keys to select “Network” and then press the [ENTER] key.**
 - This will project the LAN connection standby screen.
- 4. Check the IP address (“Server IP”) in the lower right corner of the LAN connection standby screen.**

Computer Operation

- 5. Start up the computer’s web browser, input “http://<IP address you looked up in step 4 above>” into the address bar, and then press [Enter].**
 - This will display the projector top page.
- 6. On the left pane, click “Projector Admin”. On the password input screen that appears, input the password.**
 - The initial default password is “admin”.
- 7. Click [Login].**
 - If log in proceeds normally, the “System Status” page will appear.

To change the computer IP address based on the projector's IP address and connect by wired LAN

1. Use a LAN cable to connect a computer directly to the projector.

Projector Operation

2. Select "Manual" for the projector IP setting.

- (1) Perform the following steps to display the IP Settings dialog box: [MENU] key → "Network Settings" → "Projector Wired LAN Settings".
 - The initial default setting for "IP Settings" is "Auto".
- (2) Press the [▶] key to select "Manual" for "IP Settings".
 - The projector IP address will be displayed in the "IP Address" line.
- (3) Press the [ESC] key to return to "Network Settings".
- (4) Select "Update Network Settings" and then press the [ENTER] key.
- (5) In response to the network setting update dialog box that appears, press the [▲] key to select "Yes" and then press the [ENTER] key.

Computer Operation

3. Specify an IP address for the computer. Octets 1, 2, and 3 should be the same as those for the projector's IP address. For Octet 4, specify a value in the range of 1 to 254, which is different from that of the projector's IP address.

- For example, if the projector IP address 192.168.100.10 (which is its initial default), you should specify a computer IP address of 192.168.100.XXX, where XXX is a value from 1 to 9, or 11 to 254.

4. Perform the operation starting from step 2 under "To log in to the Projector Admin pages over a wired LAN connection" (page 54).

To change the projector's IP address based on the computer's IP address and connect by wired LAN



Note

- Use the procedure below when you know the computer's IP address.

1. Use a LAN cable to connect a computer directly to the projector.

2. Specify the projector's IP address manually.

(1) Perform the following steps to display the IP Settings dialog box: [MENU] key → "Network Settings" → "Projector Wired LAN Settings".

- The initial default setting for "IP Settings" is "Auto".

(2) Press the [▶] key to select "Manual" for "IP Settings".

(3) Use the [▼] key to select "IP Address" and then press the [ENTER] key.

- This will display the Input IP Address dialog box.

111 . xxx . xxx . xxx	◀	-	111	▶
xxx . 222 . xxx . xxx	◀	-	222	▶
xxx . xxx . 333 . xxx	◀	-	333	▶
xxx . xxx . xxx . 444	◀	-	444	▶

(4) Use the [◀] and [▶] keys to change Octet 1 of the IP address so it is the same as the computer's IP address. After the setting is the way you want, press the [▼] key.

(5) Repeat step (4) to specify Octets 2 through 4.

- Octets 2 and 3 should be the same as those of the computer's IP address.
- Octet 4 should be a value in the range of 1 to 254, and different from Octet 4 of the computer's IP address.

(6) Press the [ESC] key to return to "Network Settings".

(7) Select "Update Network Settings" and then press the [ENTER] key.

(8) In response to the network setting update dialog box that appears, press the [▲] key to select "Yes" and then press the [ENTER] key.

3. Perform the operation starting from step 2 under "To log in to the Projector Admin pages over a wired LAN connection" (page 54).

To establish a wired LAN connection between the projector and a computer



Note

- The procedure below assumes that a DHCP server is running on the network to which the router belongs, and that there is a LAN connection between the computer and router.

- 1. Use a LAN cable to connect the projector to the router to which the computer is connected via the LAN.**
- 2. On the projector, select “Auto” for “IP Settings”.**
 - (1) Perform the following steps to display the IP Settings dialog box: [MENU] key → “Network Settings” → “Projector Wired LAN Settings”.
 - (2) Press the [◀] key to select “Auto” for “IP Settings”.
 - (3) Press the [ESC] key to return to “Network Settings”.
 - (4) Select “Update Network Settings” and then press the [ENTER] key.
 - (5) In response to the network setting update dialog box that appears, press the [▲] key to select “Yes” and then press the [ENTER] key.
- 3. Perform the operation starting from step 2 under “To log in to the Projector Admin pages over a wired LAN connection” (page 54).**

Supported Operations after Logging In to the Projector Admin Pages

To display the system status

1. Referring to “Logging In to the Projector Admin Pages over a Wireless LAN Connection” (page 53), log in to the Projector Admin pages.

- This will display the “System Status” page. The table below explains the information that appears on the page.

Item Name	Description
Firmware Version	This is the version of the projector’s firmware (built-in software).
IP Address	IP address currently assigned to the projector.
Subnet Mask	Subnet mask value currently configured on the projector.
Default Gateway	Default gateway currently configured for the projector.
Wireless MAC Address	Fixed wireless LAN MAC address assigned to each wireless adapter.
Wire MAC Address (XJ-M Series only)	Fixed wired LAN MAC address assigned to each projector.
Projection Status	Projection Standby: Standing by for projection over a LAN connection. Projecting: Projecting over a LAN connection.
Number of Users	Number of users currently projecting from computers via a LAN connection.

2. To log out from the Projector Admin pages, click “Logout”.

To configure Control Panel page network settings



Important!

- Network settings on the “Control Panel” page are divided between two groups.

Group 1 : Projector Name, Login Code

Group 2: Show User Name, IEEE 802.11n (Wi-Fi), Channel Width

When performing the procedure below, you should configure settings only within a single group and then apply them by clicking the applicable Apply button ([Apply1] for Group 1 or [Apply2] for Group 2). Any changes you make in the group that does not match the Apply button you click will not be applied.

1. Referring to “Logging In to the Projector Admin Pages over a Wireless LAN Connection” (page 53), log in to the Projector Admin pages.
2. In the left pane, click “Control Panel”.
3. On the “Control Panel” page that appears, configure the settings described in the table below.

To do this:	Perform this operation:
Change the projector name	In the “Projector Name” box, input up to 16 single-byte characters (no symbols) for the projector name.
Specify whether or not to require log in code input when establishing a wireless LAN connection	In the “Login Code” area, click “Enable” (prompt for login code input) or “Disable” (do not prompt for login code input).
Specify whether to show or hide the user name of the computer currently projecting on the projector over a LAN	In the “Show User Name” area, click either “ON” (show) or “Off” (hide).
Specify whether projector power can be turned on via LAN while the projector is in standby (XJ-M Series only)	In the “Remote On*” area, click “Enable” (enable power on) or “Disable”.
Enable or disable PJLink connection authentication (XJ-M Series only)	In the “PJLink Authentication” area, click “Enable” or “Disable”.
Enable or disable wireless LAN standard IEEE802.11n	In the “IEEE 802.11n (Wi-Fi)” area, click either “Enable” or “Disable”.
Specify whether wireless LAN channel width should be set automatically or should be fixed (20 MHz)	In the “Channel Width” area, click “20MHz” or “Auto”.

* Projector standby power consumption depends on whether or not Remote On is enabled. For information about power consumption in each standby state, see the “Setup Guide” that comes with the projector.

4. Reflect the changes you made on the “Control Panel” page on the projector.

To reflect the settings of these items:	Click this button:
Projector Name, Login Code	[Apply1]
Show User Name, IEEE 802.11n (Wi-Fi), Channel Width	[Apply2]

- After you press [Apply1] or [Apply2], a dialog box will appear telling you that you need to restart the projector in order to reflect the settings.

5. To restart the projector and reflect the changed settings, click [OK].

- To cancel projector re-start without changing settings, click [Cancel] instead of [OK].
- Clicking [OK] will reflect the changed settings and restart the projector. The LAN connection between the projector and computer will be terminated at this time.

To configure Network Settings page network settings

1. Referring to “Logging In to the Projector Admin Pages over a Wireless LAN Connection” (page 53), log in to the Projector Admin pages.

2. On the left pane, click “Network Settings”.

3. On the “Network Settings” page that appears, configure the settings described in the table below.

To do this:	Perform this operation:
Specify auto acquisition of an IP address from the external LAN device	In the “IP Settings” area, click “Obtain an IP address automatically”.
Specify the IP address manually	(1) In the “IP Settings” area, click “Use the IP address below”. (2) In the “IP Address” boxes, enter the IP address you want to assign to the projector (Initial Default: 192.168.100.10). (3) In the “Subnet Mask” boxes, enter a value that will be used to determine range of IP addresses of the network (subnet) to which the projector will belong (Initial Default: 255.255.255.0). (4) In the “Default Gateway” boxes, input the IP address of the default gateway (Initial Default: 192.168.100.10).
Specify auto allocation of IP addresses to computers and smart devices by the projector	(1) In the “DHCP Settings” area, click “Auto”. (2) Specify the range of automatically allocated IP addresses as required. <ul style="list-style-type: none">● In “Starting Address” and “Ending Address”, input a value in the range of 11 to 254 for the fourth octet.● Only the fourth octet can be specified by you. The other octets cannot be changed.
Specify no allocation of IP addresses to computers and smart devices by the projector	In the “DHCP Settings” area, click “Disable”.
Enable wireless LAN connection to the projector from a computer and/or smart device (by enabling the built-in access point function)	Change the “Wireless Settings” area “Access Point Function” setting to “Enable”.
Disable wireless LAN connection to the projector from a computer and/or smart device (by disabling the built-in access point function)	Change the “Wireless Settings” area “Access Point Function” setting to “Disable”.
Create a user SSID	In the “Wireless Settings” area, configure the “SSID”, “Security”, and “Passphrase/WEP Key Input” settings. For details, see steps 6 through 8 under “To create a user SSID” (page 19).
Enable/disable SSID broadcasting	In the “Wireless Settings” area, select “Enable” or “Disable” for “SSID Broadcast”.
Specify the channel for wireless LAN communication	In the “Wireless Settings” area, click [▼] on the right side of the “Channel” box. On the list that appears, select a channel from 1 to 11.
Specify auto selection of the wireless LAN channel to be used	In the “Wireless Settings” area, click [▼] on the right side of the “Channel” box. On the list that appears, select “Auto”.

To do this:	Perform this operation:
Connect the projector to an external wireless access point	In the "External Access Point" area, click "Enable" and configure settings as required. For details, see step 6 through 9 under "To connect the projector to a wireless LAN access point" (page 30).
Do not connect the projector to an external wireless access point	In the "External Access Point" area, click "Disable".

4. To reflect "Network Settings" page changes on the projector, click [Apply].

- A dialog box will appear telling you that you need to restart the projector in order to reflect the settings.

5. To restart the projector and reflect the changed settings, click [OK].

- To cancel projector re-start without changing settings, click [Cancel] instead of [OK].
- Clicking [OK] will reflect the changed settings and restart the projector. The LAN connection between the projector and computer will be terminated at this time.

To change the password for logging in to the Projector Admin pages



Note

- The procedure below can also be used to change the password for logging in to the “Transfer File” page. For information about the “Transfer File” page, see “Uploading a File to Projector Internal Memory” (page 67).

- 1. Referring to “Logging In to the Projector Admin Pages over a Wireless LAN Connection” (page 53), log in to the Projector Admin pages.**
- 2. On the left pane, click “Change Passwords”.**
 - This will display the “Change Passwords” page.

The screenshot shows the 'Network Presentation System' interface for 'CASIO Projector > Projector Admin > Change Password'. On the left, a navigation menu includes 'System Status', 'Control Panel', 'Network Settings', 'Change Password', and 'Initialize Settings'. The main content area is divided into two sections: 'Projector Admin' and 'Transfer File'. The 'Projector Admin' section is highlighted with a red border and contains two text input fields labeled 'New Password' and 'Reinput Password', followed by an 'Apply' button. The 'Transfer File' section also contains two text input fields labeled 'New Password' and 'Reinput Password', followed by an 'Apply' button. At the bottom, a copyright notice reads 'Copyright © 2014 CASIO COMPUTER CO., LTD. All Rights Reserved.' and a 'Logout' link is visible in the top right corner.

- 3. Under “Projector Admin”, input up to eight single-byte characters for the new password into both “New Password” and “Reinput Password”. Input the same password into both boxes.**
- 4. Click [Apply].**
- 5. If necessary, use the steps below to change the password for logging in to the “Transfer File” page.**
 - (1) Under “Transfer File”, input the new password into both “New Password” and “Reinput Password”. Input the same password into both boxes.
 - (2) Click [Apply].
- 6. To log out from the Projector Admin pages, click “Logout”.**

To initialize all settings on the Projector Admin pages

1. Referring to “Logging In to the Projector Admin Pages over a Wireless LAN Connection” (page 53), log in to the Projector Admin pages.
2. On the left pane, click “Initialize Settings”.
 - This will display the “Initialize Settings” page.
3. Click [Apply].
 - This displays a dialog box asking if you want to restart the projector.
4. To restart the projector and return its settings to their initial defaults, click [OK].
 - To cancel projector re-start without initializing settings, click [Cancel] instead of [OK].
 - Clicking [OK] will initialize settings and restart the projector. The LAN connection between the projector and computer will be terminated at this time.

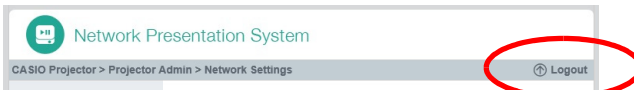
To input information for connecting to a Crestron controller (XJ-M Series Only)

1. Referring to “To log in to the Projector Admin pages over a wireless LAN connection” (page 53) or “To log in to the Projector Admin pages over a wired LAN connection” (page 54), log in to the Projector Admin pages.
2. On the left pane, click “Crestron Control”.
3. On the “Crestron Control” page that appears, input the information described below.

IP Address: Input the Crestron controller IP address.
IP ID: Input the Crestron controller IP ID.
Port: Input the port number to be used for communication with the Crestron controller (normally 41794).
4. To apply the settings you input on the projector, click [Apply].
5. To log out from the Projector Admin pages, click “Logout”.

To log out from the Projector Admin pages

In the upper right corner of the web browser window, click “Logout”.



This returns to the projector top page.

Remotely controlling the Projector Over a LAN Connection

You can use the procedure below to control the projector from a computer or other external device over a LAN connection.

To remotely control the projector from a computer connected via a LAN

1. Referring to “Logging In to the Projector Admin Pages over a Wireless LAN Connection” (page 53), log in to the Projector Admin pages.
 - This will display the “Control Panel” page.

- Projector remote control items are those surrounded by the red boundaries above. For detailed information about each of these items, see “Control Panel Page Remote Control Items”.
- For information about items other than the above (Network Settings items), see “To configure Control Panel page network settings” (page 59).

- 3. After you are finished with remote control operations, click “Logout” to log out from the Projector Admin pages.**



Note

- XJ-M Series projectors support the external devices and commands below.

External Devices and Commands	Refer to:
All PJLink Class1 (Version 1.00) commands	http://pjlink.jbmia.or.jp/english/
Crestron Electronics controller and software (RoomView®) commands	http://www.crestron.com/
AMX Device Discovery	http://www.amx.com/

Control Panel Page Remote Control Items

Group	Item	Description
Refresh (Button)		Click to refresh the screen with the latest information.
Projector Status	Projector Status	Shows the projector's current status as either "ON" or "Standby".
	Error Info	Shows one of the following. No Error: Operating normally. Temperature Error: Temperature error occurred. Fan Error: Fan error occurred. Light Error: Light source unit error occurred. Other Error: Error other than above occurred.
	Power Off (Button)	Click to turn the projector off.
	Power On (Button) (XJ-M Series only)	Click to turn on the projector. This operation is supported only when "Enable" is selected for "Remote On".
Projector Control	Input	Specifies the input source.
	3D (XJ-M Series only)	Click to enter or exit the 3D input mode.
	Color Mode	Specifies the color mode.
	Blank	Selecting "ON" for this setting temporarily blocks the image from the input source. "OFF" causes the image from the input source to be projected.
	Aspect Ratio	Changes the aspect ratio of the projected image.
	Brightness	Input a value into the box and then click the [Apply] button. This will change the projector's "Brightness" setting accordingly.
	Contrast	Input a value into the box and then click the [Apply] button. This will change the projector's "Contrast" setting accordingly.
	ECO Mode	Switches the Eco mode.
	Audio Volume	Input a value into the box and then click the [Apply] button. This will change the volume setting accordingly.
	Mute Audio	Specifies the mute setting. Audio is output while "OFF" is selected for this setting, and muted when "ON" is selected.
	Audio Out	Specifies either output from the projector's speaker or audio output terminal for audio. Speaker: Audio output from the speaker Line: Audio output from the AV terminal (XJ-A Series) or AUDIO OUT terminal (XJ-M Series)
	Initialize (Button)	Click to return all Network Projection Control items, except for the "Projector Status" items, to their initial factory defaults.

Projector File Viewer Operations

This section explains how to use a web browser to access projector internal memory to upload files and to delete existing files. It also provides information about File Viewer operations you can perform with a web browser.

Uploading a File to Projector Internal Memory

You need to log in to the “Transfer File” page in order to upload a file to projector internal memory.

Logging In to the Transfer File Page

If there is a wireless LAN connection between the projector and a computer, you can perform a Network Connection operation on the computer to log in to the “Transfer File” page.

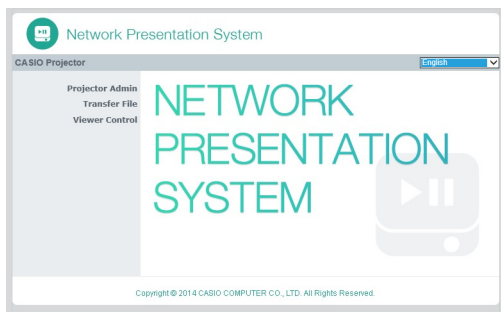
With an XJ-M Series projector, you can directly log in to the Transfer File page over a wired LAN without using Network Connection.

To log in to the Transfer File page over a wireless LAN connection

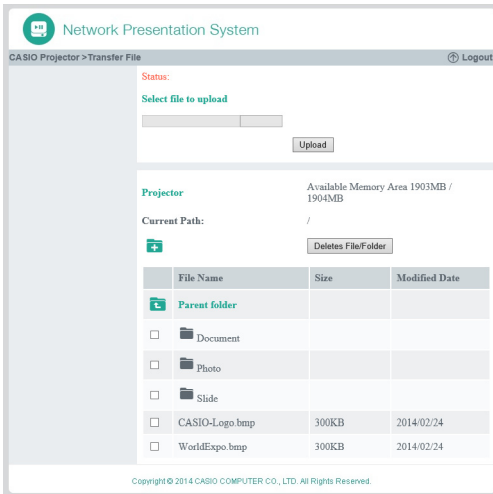
- 1. Perform one of the operations below to connect a computer to the projector via a wireless LAN.**
 - “To use a projector simple connection SSID to establish a wireless LAN connection and project” (page 12), steps 1 through 9
 - “To use a projector generic SSID to establish a wireless LAN connection and project” (page 15), steps 1 through 11
 - “To use a user SSID to establish a wireless LAN connection and project” (page 22), steps 1 through 11 (User SSID already created).
- 2. On the Network Connection window, click the function menu button and then click [Admin Screen] on the menu that appears.**



- This starts up the computer’s web browser and displays the projector’s top page.



3. On the left pane, click “Transfer File”. On the password input screen that appears, enter the password.
 - The initial default password is “admin”.
4. Click the [Login] button.
 - If log in proceeds normally, the “Transfer File” page will appear.



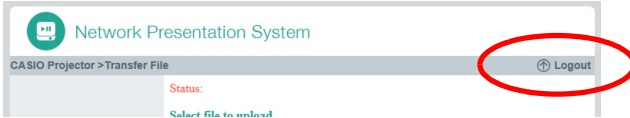
To log in to the Transfer File page over a wired LAN connection (XJ-M Series Only)

See “To log in to the Projector Admin pages over a wired LAN connection” (page 54).

In step 6 of the procedure, click “Transfer File” instead of “Projector Admin”. Note that the initial default password is “admin”.

To log out from the Transfer File page

In the upper right corner of the web browser window, click “Logout”.



This returns to the projector top page.

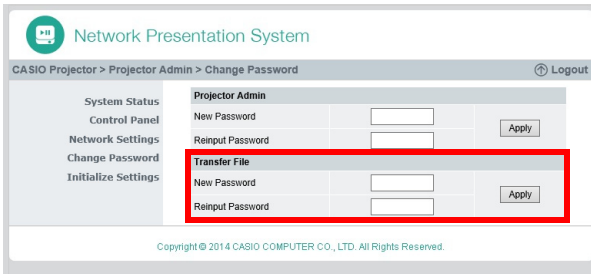
To change the password for logging in to the Transfer File page



Important!


- Projector Admin page login privileges are required to perform the procedure below.

1. Referring to “Logging In to the Projector Admin Pages over a Wireless LAN Connection” (page 53), log in to the Projector Admin pages.
2. On the left pane, click “Change Passwords”.
 - This will display the “Change Passwords” page.



3. Under “Transfer File”, input up to eight single-byte characters for the new password into both “New Password” and “Reinput Password”. Input the same password into both boxes.
4. Click [Apply].
5. To log out from the Projector Admin pages, click “Logout”.

Supported Operations while Logged In to the Transfer File Page

To do this:	Perform this operation:
Upload a file to projector internal memory	<ol style="list-style-type: none"> (1) Click [Browse] or [Select File]. <ul style="list-style-type: none"> ● This displays the “Open File” dialog box. (2) Click on the file (one only) you want to upload. <ul style="list-style-type: none"> ● Uploadable file formats are those supported for playback by the projector’s File Viewer (JPEG, PNG, GIF, BMP, AVI, MOV, MP4, ECA, PtG, PDF). (3) Click [Open]. <ul style="list-style-type: none"> ● This closes the “Open File” dialog box and causes a button to appear to the right of the file name you selected in step 1 above. (The actual positioning of the button will depend on the web browser you are using.) (4) To upload the selected file, click [Upload]. <ul style="list-style-type: none"> ● “File transfer in progress” is displayed in the “Status” line in the upper left corner of the page while transfer is in progress. This changes to “Complete” when transfer is complete.
Delete files and/or folders from projector internal memory	<ol style="list-style-type: none"> (1) On the list of files, select the check boxes of all the files and/or folders you want to delete. <ul style="list-style-type: none"> ● You can select up to 10 check boxes at one time. (2) To delete all of the files and/or folders whose check boxes are selected, click [Delete File/Folder]. (3) On the delete confirmation dialog box that appears, click [OK] to delete or [Cancel] to cancel the operation without deleting anything.
Create a new folder inside the currently displayed folder	<ol style="list-style-type: none"> (1) Click . (2) On the dialog box that appears, enter the name you want to assign to the folder and then click [OK].

Projector File Viewer Operations

This section explains the button operations you can use on a computer web browser to perform projector File Viewer operations.

Displaying the Viewer Control Page

If there is a wireless LAN connection between the projector and a computer, you can perform a Network Connection operation on the computer to display the “Viewer Control” page without inputting a password.

With an XJ-M Series projector, you can directly log in to the “Viewer Control” page over a wired LAN without using Network Connection.

To display the Viewer Control page over a wireless LAN connection

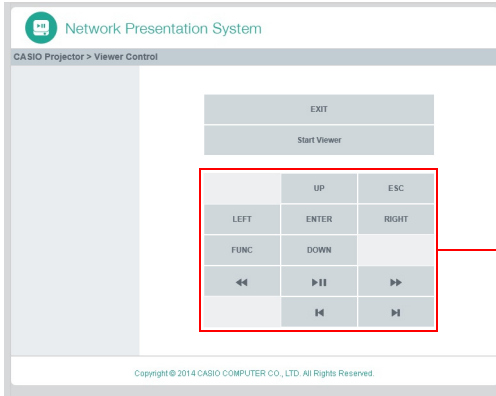
- 1. Perform one of the operations below to connect a computer to the projector via a wireless LAN.**
 - “To use a projector simple connection SSID to establish a wireless LAN connection and project” (page 12), steps 1 through 9
 - “To use a projector generic SSID to establish a wireless LAN connection and project” (page 15), steps 1 through 11
 - “To use a user SSID to establish a wireless LAN connection and project” (page 22), steps 1 through 11 (User SSID already created).
- 2. On the Network Connection window, click the function menu button and then click [Admin Screen] on the menu that appears.**



- This starts up the computer’s web browser and displays the projector’s top page.

3. On the left pane, click “Viewer Control”.

- This displays the “Viewer Control” page like the one shown below, and starts projection of the File Viewer main screen by the projector. For information about the operations you can perform from this point, see “Viewer Control Page Operations” (page 72).



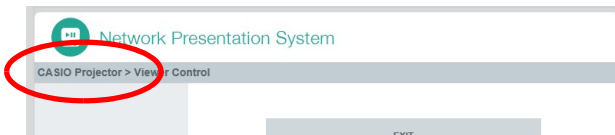
While File Viewer is being projected, these buttons perform the same operations as the corresponding buttons on the remote controller that comes with the projector.

To display the Viewer Control page over a wired LAN connection (XJ-M Series Only)

See “To log in to the Projector Admin pages over a wired LAN connection” (page 54). In step 6 of the procedure, click “Viewer Control” instead of “Projector Admin”.

To return to the projector top page from the Viewer Control page

In the upper left corner of the web browser window, click “CASIO Projector”.



Viewer Control Page Operations

To do this:	Perform this operation:
Start File Viewer projection	Click [Start Viewer].
Perform File Viewer remote controller operations	Click the desired buttons under [Start Viewer]. The keys have the same functions as the corresponding projector remote controller key. For details about File Viewer operations, see “Projecting with File Viewer” in the User’s Guide.
Exit the Viewer Control page and return to the projector top page	Click [EXIT]*.

* File Viewer will not be exited if you click [EXIT] while it is projecting.

Using the Token Wizard

You can use the Network Connection token wizard to copy Network Connection to a USB flash drive. After you do that, you can run Network Connection on a computer that does not have the program installed simply by plugging the USB flash drive (called a “USB Token”) into the computer’s USB port. Using USB tokens is recommended when connecting to the projector from multiple computers.

To install Network Connection on a USB flash drive



Important!

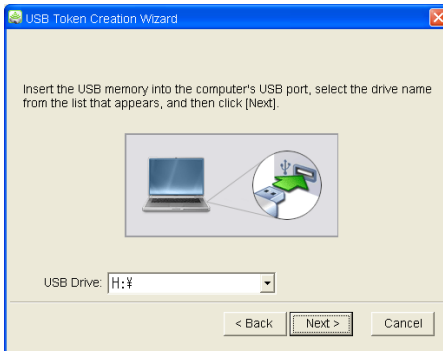
- Using the procedure below to install Network Connection on a USB flash drive creates a file named “autorun.inf” (which is a Network Connection auto run file) in the USB flash drive root directory. If the USB flash drive root directory already contains a file with the same name, the existing file will be renamed by adding “.bak” or a three-digit number (.001, .002, etc.) to the end of its file name.
- Using the following procedure to install Network Connection on a USB flash drive will change the name of the USB flash drive to “USB Token” and also change its icon to

1. On the Network Connection window, click the function menu button and then click [Token Wizard] on the menu that appears.

- This displays the token wizard.

2. Click [Next>].

- This displays a USB drive selection screen.



- If there is no USB flash drive connected to the computer, the message “USB memory could not be detected.” will appear. If this happens, connect the USB flash drive and wait until its USB flash drive name appears in the “USB Drive” box.

3. If there are multiple USB flash drives connected to the computer, click the [▼] button to the right of the “USB Drive” box and select the name of the drive where you want to install Network Connection.

4. Click the [Next>] button.

- This installs Network Connection on the specified USB flash drive. The message “Wizard ended normally.” appears on the display after installation is complete.

5. Click [Exit] to close the token wizard screen.

To use a USB token to connect a computer to the projector via a wireless LAN

Connect the USB token to the computer's USB port and then double click the Network Connection icon in the token. After Network Connection starts up, you can perform the same operations you do when Network Connection is installed on a computer.



Note

- You cannot use the token wizard when you start up Network Connection from a USB token.

Projecting Via a Wireless LAN Connection with Various Different Devices

Using the Network Connection to Project from a Mac OS

You can project the screen contents of a computer running a Mac OS (Mac OS X 10.6, 10.7, 10.8, 10.9) that is connected to the projector over a wireless LAN connection. The conditions below are required in order to do so.

- On the projector, perform the required operation to change the projector's SSID to a generic SSID (casiolpj0101, casiolpj0102, casiolpj0103, casiolpj0104) or a user SSID. For more information, see "To change the SSID" (page 49).
- Run Network Connection* on the Mac OS computer, and then log in to the projector from Network Connection.

* You can download Network Connection for Mac OS from the CASIO projector support site located at the URL shown below. The CASIO projector support site also includes information about required computer environments and operation details.
<http://www.casio-intl.com/support/>

Using C-Assist to Project from a Smart Device

Installing C-Assist on an Android or iOS smart device makes it possible to project smart device images from the projector. C-Assist also makes it possible to use the smart device to control the computer to which the projector is connected. The conditions below are required to perform these operations.

- On the projector, perform the required operation to change the projector's SSID to a generic SSID (casio1pj0101, casio1pj0102, casio1pj0103, casio1pj0104) or a user SSID. For more information, see "To change the SSID" (page 49).
- On the smart device, start up C-Assist and use C-Assist to log in to the projector.
- * For an overview of C-Assist functions and information about how to obtain it, visit the CASIO projector support site (<http://www.casio-intl.com/support/>).

Using MobiShow to Project from a Smart Device

MobiShow is client software developed by Awind for wireless projection. If MobiShow is installed on an Android or iOS smart device, a wireless LAN connection can be established with the projector for projection of smart device images from the projector. The conditions below are required in order to do so.


- You need to obtain the version of MobiShow that is compatible with your smart device and install it on the smart device.
 - Before installing MobiShow, go to the CASIO projector support site (<http://www.casio-intl.com/support/>) and check the information there about smart device operating systems and MobiShow versions that are compatible with projector connection.
 - You can obtain a copy of MobiShow from any site that carries applications for your smart device (Google Play, iTunes, App Store, etc.)
- On the projector, perform the required operation to change the projector's SSID to a generic SSID (casio1pj0101, casio1pj0102, casio1pj0103, casio1pj0104) or a user SSID. For more information, see "To change the SSID" (page 49).
- On the smart device, start up MobiShow and use MobiShow to log in to the projector.



Note

- MobiShow supports playback of JPEG files and PtG2 files (converted PowerPoint file) stored on a smart device. For information about how to convert a PowerPoint file to a PtG2 file, visit the CASIO website (<http://www.casio-intl.com/support/>).

Wireless LAN Connection between the Projector and a Computer

Problem	Cause and Required Action
I can't establish a wireless LAN connection between the projector and a computer.	<ul style="list-style-type: none"> ● If any other wireless LAN utility besides Network Connection is running on the computer, close it. ● Try moving the projector closer to the computer. Also, make sure there is no wall or other obstruction between the projector and computer. ● If a nearby microwave oven, Bluetooth device, or other device is interfering with the wireless LAN signal, relocate the interfering device. ● If the projector is off, turn it on. ● If the projector does not have the wireless adapter connected, connect it (page 10). ● If the computer's wireless LAN function is disabled, enable it.
The wireless LAN connection between the projector and computer keeps dropping.	<ul style="list-style-type: none"> ● If any other wireless LAN utility besides Network Connection is running on the computer, close it. ● Try moving the projector closer to the computer. Also, make sure there is no wall or other obstruction between the projector and computer. ● If a nearby microwave oven, Bluetooth device, or other device is interfering with the wireless LAN signal, relocate the interfering device.
I can establish a wireless LAN connection between the projector and computer, but the computer screen contents won't project.	<ul style="list-style-type: none"> ● If something other than "Wireless" (XJ-A Series) or "Network" (XJ-M Series) is selected as the projector's input source, press the [INPUT] key and then select "Wireless" (XJ-A Series) or "Network" (XJ-M Series). ● If computer screen contents won't project while "Wireless" (XJ-A Series) or "Network" (XJ-M Series) is selected as the input source, click  (Project 1 screen) on the Network Connection window. ● If the projection image has been frozen or cut off by pressing the [FREEZE] or [BLANK] key on the projector's remote controller, press the remote controller's [ESC] key to cancel the freeze/blank operation.
Projection image switching is slow.	<ul style="list-style-type: none"> ● On the Network Connection window, click the function menu button and then check "Projection Setting". If "High-resolution" is selected, change the setting to "High-speed". ● On the computer, exit all applications that you are not using. ● If your computer is running Windows Vista, 7, 8, or 8.1, disable Windows Aero™.
Wireless LAN connection problems when multiple projectors are being used at the same time.	<p>Check if more than one projector is assigned the same SSID number. Each projector should have its own unique SSID. For information about the required operation, see "To change the SSID" (page 49).</p>

Projector Admin Pages

Problem	Cause and Required Action
The Projector Admin pages do not appear when I try to access them from Network Connection.	The browser you are using may be configured to use a proxy server. Since a proxy server configuration can make it impossible to access the Projector Admin pages, you should change your browser configuration. For information about proxy server settings, see the help and other user documentation for your browser.
I forgot the login password I specified for the Projector Admin pages.	Perform the operation under "To initialize network settings" (page 51) to return projector network settings to their initial defaults.

Transfer File Pages

Problem	Cause and Required Action
The name of the file uploaded to the projector using the Transfer File page is shorter than the name of the file prior to upload.	Up to 38 single-byte characters can be displayed for a file name by the projector's File Viewer, so a file with a longer name will cause anything past the 38th character to be cut off automatically. If you want the same file name to be used both prior to and following upload, make sure it has no more than 38 characters.
The network connection was lost while a file is being uploaded to the projector using the Transfer File page. The network connection was immediately re-established and the file that was being uploaded is shown on the Transfer File page.	The file uploaded to the projector's internal memory is incomplete. Using File Viewer to perform an operation on the file may result in some of the file data being missing or the file may not display at all. Delete the file from the projector's internal memory and upload it again.
The network connection was lost while the Transfer File page was displayed. The network connection was immediately re-established, but the file list on the Transfer File page was blank.	This may be due to a temporary file recognition error. Exit the web browser you are using to display the Transfer File page, and then perform the operation under "To log in to the Transfer File page over a wireless LAN connection" (page 67) or "To log in to the Transfer File page over a wired LAN connection (XJ-M Series Only)" (page 69) again.
The network connection was lost while the Transfer File page was displayed. The network connection was immediately re-established, but files were missing from the internal memory file list on the Transfer File page.	This may be due to a temporary file recognition error. Perform the steps below. <ol style="list-style-type: none"> (1) Perform the required operation on the projector to exit File Viewer. (2) Turn the projector off and then back on again. (3) Start up File Viewer and display the list of files in internal memory. For details about the operation to display the File Viewer list of files in internal memory, see "Starting Projection of Files Located in Projector Internal Memory" in the User's Guide.

CASIO®

CASIO COMPUTER CO., LTD.
6-2, Hon-machi 1-chome
Shibuya-ku, Tokyo 151-8543, Japan

MA1405-A

© 2014 CASIO COMPUTER CO., LTD.