

# REMINGTON®



**Use and Care Guide**

EP-7030

Face & Body Epilator



### Register Your New Product Today!

By registering your new Remington® product you will receive these important benefits: Proof of ownership • Product protection • Product registration • Special offers  
Register online at: [www.RemingtonProducts.com](http://www.RemingtonProducts.com)

## IMPORTANT SAFETY INSTRUCTIONS

When using an electrical appliance, basic precautions should always be observed, including the following. Read all instructions before using this appliance.

### READ ALL INSTRUCTIONS BEFORE USING.

### KEEP ADAPTOR AWAY FROM WATER.

## DANGER

As with most electrical appliances, electrical parts are electrically live even when switch is off. To reduce the risk of death by electric shock:

- Do not reach for an appliance that has fallen into water. Unplug immediately.
- Do not use while bathing or in the shower if the appliance is plugged in.
- Do not place or store appliance where it can fall or be pulled into a tub or sink.
- Do not place in or drop into water or other liquid.
- Always unplug immediately after using.
- Always unplug this appliance before cleaning.
- Never operate this appliance if it has a damaged cord or plug, if it is not working properly, if it has been dropped or damaged, or dropped into water.
- Keep the cord away from heated surfaces. Do not wrap the cord around the appliance.
- Never drop or insert any object into any opening.
- Do not use outdoors or operate where aerosol (spray) products are being used or where oxygen is being administered.
- Do not use this appliance with a damaged or broken tweezer barrel as injury may occur.

## WARNING

To reduce the risk of burns, fire, electric shock or injury to persons:

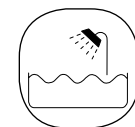
- An appliance should never be left unattended when plugged in.
- Close supervision is necessary when this appliance is used by, on, or near children or persons with certain disabilities.
- Use this appliance only for its intended use as described in this manual. Do not use attachments not recommended by manufacturer.
- Never operate this appliance if it has a damaged cord or plug, if it is not working properly, if it has been dropped or damaged, or dropped into water.
- Keep the cord away from heated surfaces. Do not wrap the cord around the appliance.
- Never drop or insert any object into any opening.
- Do not use outdoors or operate where aerosol (spray) products are being used or where oxygen is being administered.
- Do not use this appliance with a damaged or broken tweezer barrel as injury may occur.

- Always store your appliance and cord in a moisture-free area. Make sure your cord is disconnected from the appliance.
- Make sure unit is "off" before plugging in, always attach plug to appliance first, then to outlet. To disconnect, turn all controls to "off", then remove plug from outlet, then detach power cord from the appliance for storage.
- For household use only.
- The power unit is intended to be correctly oriented in a vertical or floor mount position.

## SAVE THESE INSTRUCTIONS

## Product Features

- A. Full size epilation head
- B. Perfect angle cap
- C. Epilator head release button (on rear)
- D. Pivot Head
- E. Low Battery/Charging Indicator
- F. Detail light
- G. On/off button & 2 speed setting
- H. Power inlet
- I. Precision cap
- J. Massaging cap with Aloe Vera
- K. Power cord



This epilator is a wet/dry epilator, it may be used in a bath or shower.

### FIRST: CHARGE IT!

Before using your epilator for the first time, it must be fully charged. Plug it in for 4 hours before initial use and every charge thereafter.

### TO CHARGE EPILATOR:

- Make sure your epilator is turned off before charging.
  - Connect the cord to the epilator, then plug the charging adaptor into the electrical outlet. A charging indicator light will come on.
  - Your epilator automatically begins to charge as soon as it is plugged into the charging adaptor that is connected to electrical outlet.
  - While charging, the green indicator light will be illuminated.
  - Your epilator will be fully charged when the green indicator light turns off.
- NOTE: Your epilator cannot be turned on while it is charging. Do not attempt to operate your epilator when it is plugged into the charging adaptor.
- Use only the charging adaptor supplied with the epilator.
  - Charging should be done at temperatures between 40° and 95°F, or it could decrease the battery's life.
  - If the unit is not going to be used for an extended period of time (2-3 months) fully recharge when you want to use it again.

### LOW BATTERY INDICATOR:

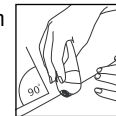
Your epilator will alert you when the battery charge is running low. The red indicator light will be illuminated to indicate low battery. When the low battery indicator is illuminated, you must return to charging mode.

### Operating Instructions:

This epilator operates cordless only.

- Before epilating, make sure that your skin is clean, dry and free from creams or oils.
- Rub the skin in the area to be epilated to lift short hairs to optimize hair removal.
- Turn the epilator on to the desired speed. Low is recommended for fine hair and high is recommended for coarse hair or stronger hair growth.
- Using your free hand, hold the skin taut to make the hairs stand upright.
- Position the epilator flat so that the

stainless steel tweezers are at 90° angle and flat against the skin. The Remington® epilation head is designed with a staggered tweezer system to ensure maximum tweezer coverage within the area of hair removal.



### Pivoting Head:

- The epilator features a pivoting head to better adapt to your body curves for more comfort and effective epilating.

### Detail Light:

- The detail light is incorporated with the switch to give you the best condition to remove even the finest hair.

### Precision Cap:

For detailed hair removal use the precision epilator cap.

- Ensure the epilator is turned off.
- Remove full size epilator cap or massaging cap.

- Place the precision cap in the appropriate slots at the top of your epilator.

- Gently press the precision cap into place until you hear a "click."

### Massaging Cap With Aloe Vera

For gentler epilation, the massaging cap has flexible elements infused with aloe vera for a soothing experience.

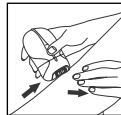
- Ensure the epilator is turned off.
- Remove perfect angle or precision cap.
- Place the massaging cap in appropriate slots at the top of your epilator.

- Gently press the massaging cap into place until you hear a 'click'.

Your epilator can be used wet or dry.

### Arm/Leg Epilation

Epilate from the lower arm/leg and slowly move upwards. To epilate behind the elbow/knee, keep the arm/leg straight to stretch the skin.



### Underarms and Bikini

Please be aware that these areas are particularly sensitive. However this sensitivity will reduce after repeated usage. The precision cap is recommended for these particularly sensitive areas.



For more comfort, ensure that the skin is held taut and that the hair is at the optimum length of .08-0.2" or 2-5mm. If it has been an extended period of time since you have removed hair, trim the hair with a Remington® bikini trimmer or precision trimmer before epilation.

When epilating the underarm area, raise your arm so that the skin is stretched. Guide the epilator in circular movements. Avoid using substances which may cause irritation, such as deodorants, directly after epilation (preferably overnight).

### Facial Epilation

Epilate unwanted facial hair with the precision cap. Place epilator at a 90° angle to the skin and move the epilator head in a circular motion.

NOTE: Do not use for removing hair from the eyebrow.

### Caution:

- For your protection your epilator may slow down or even stop if pressed too firmly against the skin.
- Do not use the epilating head on irritated skin or skin with varicose veins, rashes, spots, moles or wounds without consulting a doctor. People with reduced immune response e.g. during pregnancy, or people who suffer from diabetes mellitus, hemophilia or immunodeficiency should also consult their doctor before using this product.
- For hygiene reasons do not let another person use your epilator. It is recommended for use by one person only.

### Helpful Hints:

If you are new to epilation systems, you may experience some initial discomfort. This decreases with each use of the product. With cumulative use of the Remington® epilation system, you may find a decrease in both the quantity and the density of hair growth.

Your new epilator is designed to make the removal of unwanted hair as efficient, gentle and easy as possible. The perfect angle cap ensures you are using your epilator at the optimal angle for tweezing. The rotary tweezers catch even the shortest hairs (minimum length .02"/.5mm) and pull them out by the root. The hair that grows back should be soft and thin.

The precision cap is designed for smaller, more detailed areas like the face. The massaging cap with aloe vera soothes the skin as you epilate.

- Using an epilator may cause reddening or irritation of the skin. This is a normal reaction that will quickly disappear. However, you should consult your doctor if the irritation has not disappeared within three days.
- All methods of hair removal from the root can result in ingrown hairs depending on the condition of the skin and hair. Regular exfoliation helps to prevent ingrown hairs. In some cases inflammation of the skin could occur when bacteria penetrate the skin (e.g. when sliding the

appliance over the skin). Thorough cleaning of the epilation head before each use will minimize the risk of infection.

- When using an epilator for the first time it is best to try it on a small area to get used to the process of epilation.
- The optimum length for hair removal is between .08-0.2" or 2-5mm. Epilation is easier and more comfortable with this hair length.
- Take a warm bath or shower before epilating and exfoliate to remove dead skin cells. This will make your skin more pliable, making the epilation process less uncomfortable.
- Your skin should be clean, dry and free of creams or oils.

### For the Best Results:

- Best results are achieved by gliding the epilator lightly over the skin in a **short, circular motion-sweeping the head up and away** at the end of each pass. The tweezer should gently glide over the skin, barely touching it. If you press too hard, a built-in safety measure slows or stops the tweezers altogether.
- Repeat the motion within the same area a few times until all hair is removed. The duration of use depends on the quantity and density of the hair. After several months of cumulative use, there will be less hair and those remaining will be thinner. There will also be a longer interval between re-growth of the hair.

## Usage Tips

- You may want to epilate in the evening so that any possible reddening can disappear overnight.

- After use, you can use a body cream or aloe lotion to soothe the skin and reduce skin irritation.

- Regularly exfoliate after epilation to avoid ingrown hairs.

- For best results, the unit should be cleaned after every use.

- The Remington® epilator can be used safely on the bikini line. If the bikini line hair is too long, trim first with either scissors or a trimmer. Afterwards, you can use the epilator to remove the hair from the root for weeks of a smooth and beautiful bikini line.

- Your Remington® epilator can be used safely to remove a single hair from the body.

- Facial use for upper lip and chin with precision cap only.

- You should initially use your epilator about once a week. Touch-ups will contribute to the weakening of your hair and will keep your legs constantly smooth. Removing hair once a week is recommended particularly for women with sensitive skin because the process is gentle and only takes a few minutes.

## Cleaning and Maintenance

### Storage

Never wrap the cord around the appliance, since this will cause the cord to wear prematurely and break, thus voiding warranty. Handle the cord carefully and avoid twisting, jerking, or straining it, especially at cord connections.

### Caring For Your Epilator

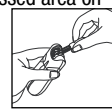
To ensure long lasting performance of your epilator, clean the head assembly regularly.

### CLEANING THE EPILATION HEAD AFTER EACH USE

- Ensure the epilator is turned off and disconnected from the outlet.



- Hold sides of epilator head and place your thumb in the recessed area on the rear of the cap to easily lift and remove the cap away from the tweezer barrel.



- Turn the head assembly upside down.

- Brush the accumulated hair from the tweezers by turning the barrel manually.

- The epilator head may be cleaned under water. To remove epilator head, press release button on rear of epilator to release head. Although

the epilator can be used in the shower, it is not recommended to submerge the unit under water.

- For best results, remove the cap and brush the accumulated hairs from the tweezers before rinsing.

- Allow to dry completely before reattaching the cap.

NOTE: The body of the epilator is NOT washable.

### DO NOT COMPLETELY SUBMERGE IN WATER. YOU MAY ONLY SUBMERGE THE EPILATOR HEAD AFTER THEY HAVE BEEN REMOVED FROM THE BODY.

### CAUTION:

*Epilator head:* Suitable for cleaning under water.

*Epilator body:* **MUST BE DISCONNECTED FROM THE OUTLET AND TURNED OFF BEFORE RINSING UNDERWATER.**

### TO REMOVE RESIDUE

To remove residue from the stainless steel tweezers of the epilator head, dampen a swab with alcohol. Gently run the swab over the tweezers until the residue has been removed.

CAUTION: Make sure that the cotton swab is not soaked in alcohol as this may damage the epilator head.

NOTE: This appliance does not contain any user-serviceable parts.

## Performance Guarantee

### Limited Two-Year Warranty

Spectrum Brands, Inc. warrants this product against any defects that are due to faulty material or workmanship for a two-year period from the original date of consumer purchase. This warranty does not include damage to the product resulting from accident or misuse.

If the product should become defective within the warranty period, we will replace it free of charge. Return your product and sales receipt with your name, address and day time phone number to: Remington Returns Center, 507 Stokely Dr., P.O. Box 1, Deforest, WI 53532. For more information call 800-736-4648 or 800-268-0425 in Canada.

### PROTECT THE ENVIRONMENT

This appliance contains a recyclable Lithium-Ion (Li-ion) battery, which is not intended to be replaced. When your epilator reaches the end of its useful life, the battery must be removed from the epilator and recycled or disposed of properly in accordance with your local, state and/or government requirements.

- Do not attempt to replace the battery. This could result in the risk of fire or electric shock.
- Do not tamper with the device's internal components. There are no user-serviceable parts inside.
- Do not put in fire or mutilate the battery during disposal as it may burst or release toxic materials.

### KEEP ORIGINAL SALES RECEIPT AS PROOF OF PURCHASE FOR WARRANTY PURPOSES.

This warranty does not cover products damaged by the following:

- Accident, misuse, abuse or alteration of the product
- Servicing by unauthorized persons
- Use with unauthorized accessories
- Connecting it to incorrect current and voltage
- Wrapping cord around appliance causing premature wear & breakage
- Any other conditions beyond our control

## Performance Guarantee

**SPECTRUM BRANDS, INC. SHALL NOT BE RESPONSIBLE FOR ANY INCIDENTAL, SPECIAL OR CONSEQUENTIAL DAMAGES RESULTING FROM THE USE OF THIS PRODUCT. ALL IMPLIED WARRANTIES, INCLUDING BUT NOT LIMITED TO IMPLIED WARRANTIES OF FITNESS AND MERCHANTABILITY, ARE LIMITED IN DURATION TO TWO YEARS FROM DATE OF ORIGINAL PURCHASE.**

This warranty gives you specific legal rights and you may also have other rights which vary from state to state or province to province. Some states do not allow the exclusion or limitation of incidental, special or consequential damages.

### Performance Guarantee Spectrum Brands, Inc.

#### Money-back Offer

If within 30 days after you have purchased your Remington® branded product, you are not satisfied and would like a refund, return it with the sales slip indicating purchase price and date of purchase to the retailer from whom it was purchased. Spectrum Brands, Inc. will reimburse all retailers who accept the product within 30 days from the date of purchase. If you have any questions concerning the money-back guarantee, please call 800-736-4648 in the U.S. or 800-268-0425 in Canada.

® Registered Trademark of ROVICAL, Inc., a subsidiary of Spectrum Brands, Inc.

**Questions or comments:** Call 800-736-4648 in U.S. or 800-268-0425 in Canada. Or visit [RemingtonProducts.com](http://RemingtonProducts.com)

Dist. by: Spectrum Brands, Inc., Madison, WI 53711

Dist. by: Spectrum Brands Canada, Inc., Mississauga, ON L5L 0A1

© 2012 ROVICAL, INC. 11/12 Job# 2012-7-17\_71  
**Designed in USA**

**Manufactured to Remington's specifications in the PRC.**

Contains



Intertek listed adaptor

120V 60 Hz

T22-0000642